



COOPERATIVE STRATEGIES

COMPLETE FINANCIAL & DEMOGRAPHIC PLANNING FOR EDUCATION

SCHOOL DISTRICT OF SUPERIOR

FALL 2023 REDISTRICTING

OCTOBER 16 & 17, 2023

▶ **BOUNDARY PLANNING**
PROCESS

**Boundary
Criteria**

**Criteria
Feedback**

**Options
Creation**

**Options
Feedback &
Community
Meetings**

**Board
Discussion
& Action**

A row of yellow school buses is parked in a grassy field. The buses are yellow with black stripes and have "SCHOOL BUS" written on the front. The field is green with small yellow flowers. The sky is blue with white clouds. The text "REDISTRICTING" is overlaid in the center in a large, white, serif font. Below it, the text "BACKGROUND REPORT/CRITERIA SURVEY" is overlaid in a smaller, white, sans-serif font.

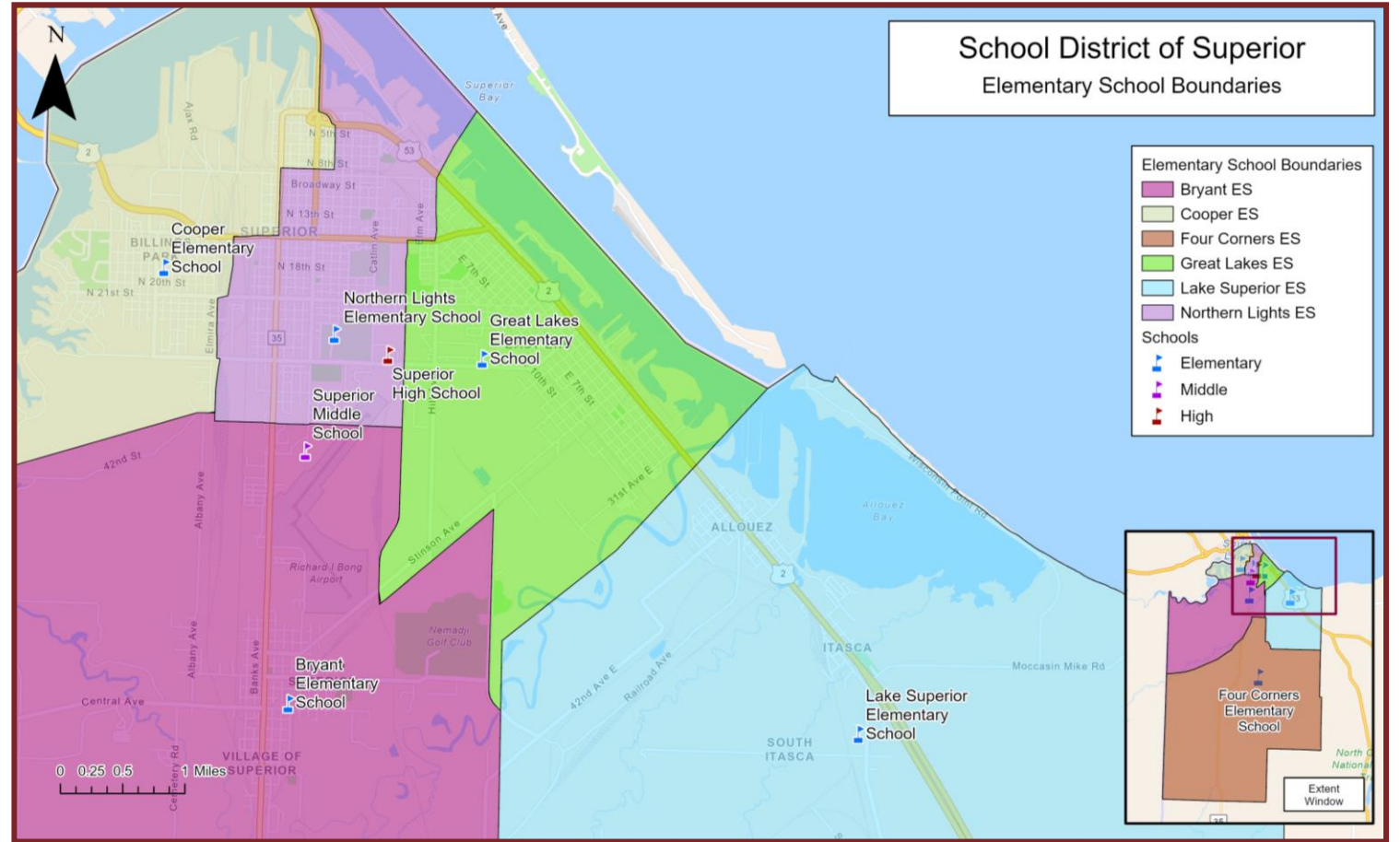
REDISTRICTING

BACKGROUND REPORT/CRITERIA SURVEY

► EXISTING ELEMENTARY BOUNDARIES & UTILIZATION

The table below details current enrollment and utilization metrics for the schools. The utilization is calculated by dividing the enrollment by the capacity. The map on the right shows the existing elementary school boundaries.

ES Boundary	Capacity	K-5 Enrollment	Utilization
Bryant ES	384	304	79%
Cooper ES	543	306	56%
Four Corners ES	234	168	72%
Great Lakes ES	429	358	83%
Lake Superior ES	234	141	60%
Northern Lights ES	764	445	58%
TOTAL	2,588	1,722	67%



▶ LIVE/ATTEND ANALYSIS

2023-24 K-5 Live/Attend Analysis		Attend						Attend Grand Total	Transfer Out	% Transfer Out
		Bryant Elementary	Cooper Elementary	Four Corners Elementary	Great Lakes Elementary	Lake Superior Elementary	Northern Lights Elementary			
Live	Bryant ES	255	6	-	9	1	11	282	27	10%
	Cooper ES	-	244	1	5	-	19	269	25	9%
	Four Corners ES	14	5	163	3	2	1	188	25	13%
	Great Lakes ES	3	18	-	296	5	14	336	40	12%
	Lake Superior ES	9	5	2	9	124	3	152	28	18%
	Northern Lights ES	17	22	1	30	3	393	466	73	16%
	Out of District	6	6	1	6	6	4	29	-	-
Live Grand Total		304	306	168	358	141	445	Live & Attend		
Live & Attend		255	244	163	296	124	393			
Transfer In		49	62	5	62	17	52			
% Transfer In		16%	20%	3%	17%	12%	12%			

- The live/attend analysis identifies where students reside and compares it to the school in which they attend. The columns illustrate the school of attendance, and the rows illustrate the attendance boundary. The chart can be read both vertically and horizontally. It is important to note that students are transferring throughout the District for a variety of reasons.
- **13%** of ES Students attend a school outside of their assigned attendance boundary

► CRITERIA FOR BOUNDARY CHANGES

as discussed in the Board One on One meetings

Impact to Students/Community

- Consider the unique needs of the student population at a given campus, which may not be reflected in the data alone.
- Attempt to assign entire neighborhoods to the same school(s).
- Attempt to ensure students zoned to campuses are not moved or negatively impacted when distributing programs among schools.
- **Do not make communities feel targeted/singled out for proposed changes.**
- **Plan ahead to minimize future attendance area changes and ensure plan longevity.**

Budget

- Consider fiscal impact and minimize future capital and operational budget costs.
- **Provide the most cost effective, efficient and feasible means for student transportation, taking into account travel time.**

Facilities - Capacity & Utilization

- Minimize use of temporary classrooms (portables) that cause a school to operate at more than capacity.
- **Promote reasonable balancing of enrollment among schools to avoid overutilization or underutilization of facilities.**
- Utilize projected student enrollment and capacity studies as a way of determining efficient use of educational facilities.

Transportation/Walkability

- **Utilize student transportation resources effectively.**
- **Consider students' proximity to a campus to minimize bus commuting times.**
- **Promote safe and reasonable walking boundaries.**

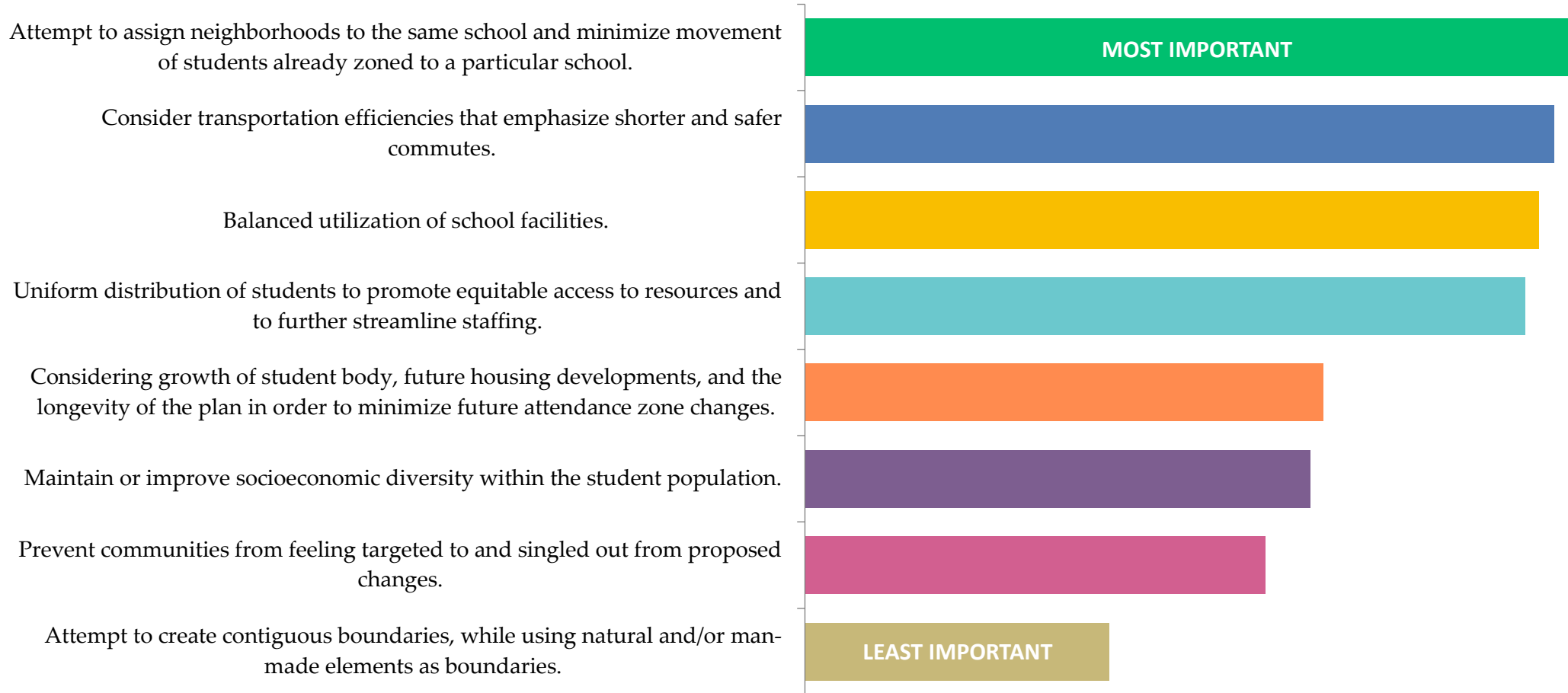
Encouragement of Diversity

- **Attempt to maintain diverse populations.**
- **Provide a reasonably balanced socio-economic relationship in all schools.**
- Consider critical masses of change areas to avoid moving small isolated groups of students.

Geographical Elements

- Attempt to create boundaries that are contiguous.
- Utilize natural (e.g., creeks, drainage ditches, and the like) and man-made elements as boundaries.
- Consider anticipated growth/decline

► SURVEY RESULTS OF RANKED CRITERIA



▶ KEY TAKEAWAYS FROM OPEN-ENDED QUESTIONS

PARENTS/GUARDIANS EMPHASIZED:

- Prioritizing the best interests of students and their education in boundary decisions
- Concerns about the disruption of students' education and social lives due to boundary changes.
- Maintaining smaller class sizes and reducing bus ride times for students.
- Suggestions to focus on diversity and socioeconomic balance within schools.
- Concerns about the closure of LSE.
- Calls for transparency and accountability in the decision-making process.
- Some individuals suggested that they may consider alternative education options.

STAFF EMPHASIZED:

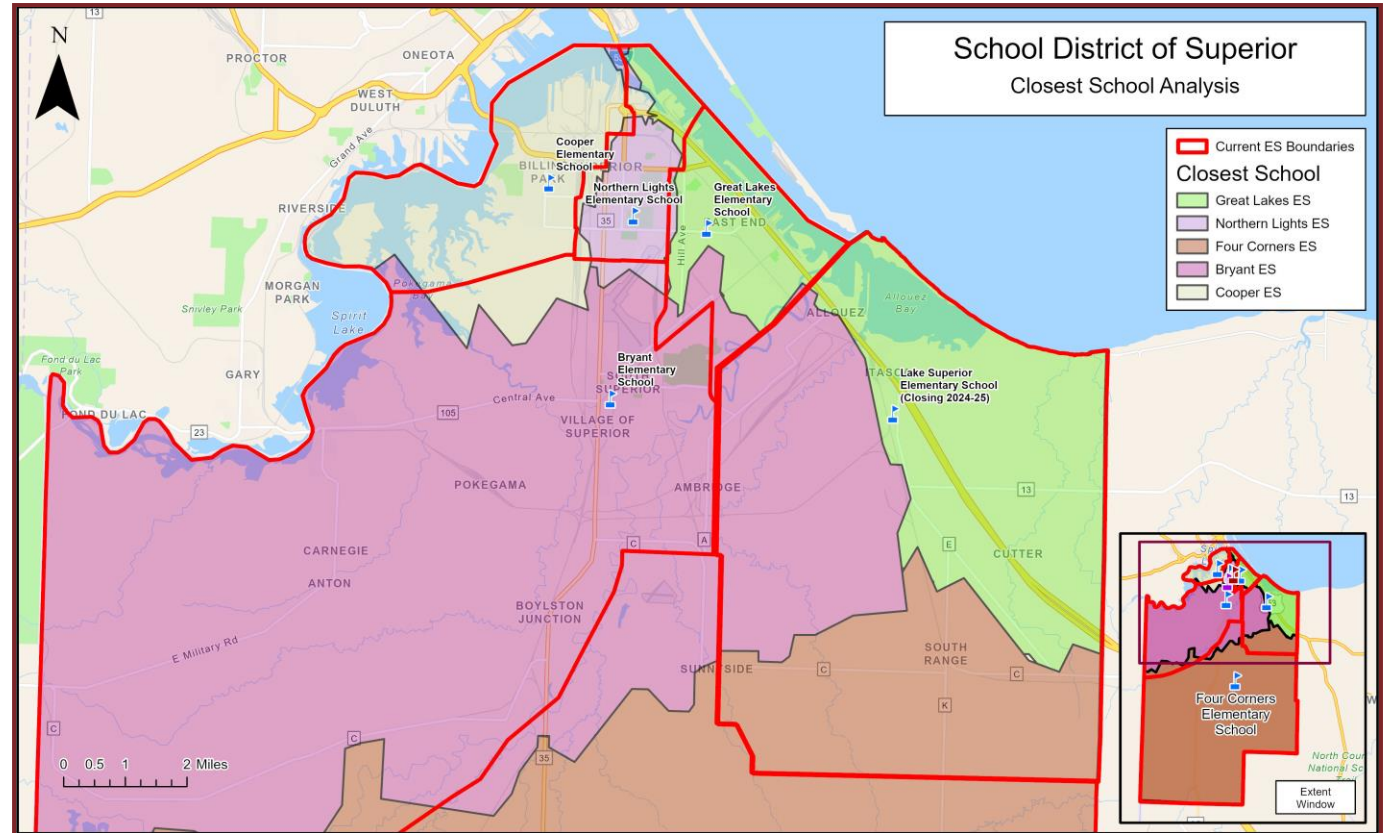
- Aim for balanced utilization of school facilities and balanced distribution of resources.
- Consider long-term needs, especially a seamless and gradual shift of students and staff when redistricting occurs.

► CLOSEST SCHOOL ANALYSIS

The map on the right details the areas closest to the elementary schools within the district. Due to Lake Superior Elementary School's impending closure, the analysis on the map did not take the closest areas to that school into account. The tables below detail the change of enrollment and utilization of schools if students were attending only the closest school to them.

ES Boundary	Capacity	K-5 Enrollment	Utilization
Bryant ES	384	304	79%
Cooper ES	543	306	56%
Four Corners ES	234	168	72%
Great Lakes ES	429	358	83%
Lake Superior ES	234	141	60%
Northern Lights ES	764	445	58%
TOTAL	2,588	1,722	67%

ES Boundary	Capacity	K-5 Enrollment	Utilization
Bryant ES	384	278	73%
Cooper ES	543	240	44%
Four Corners ES	234	172	74%
Great Lakes ES	429	455	106%
Northern Lights ES	764	471	62%
TOTAL	2,354	1,722	77%

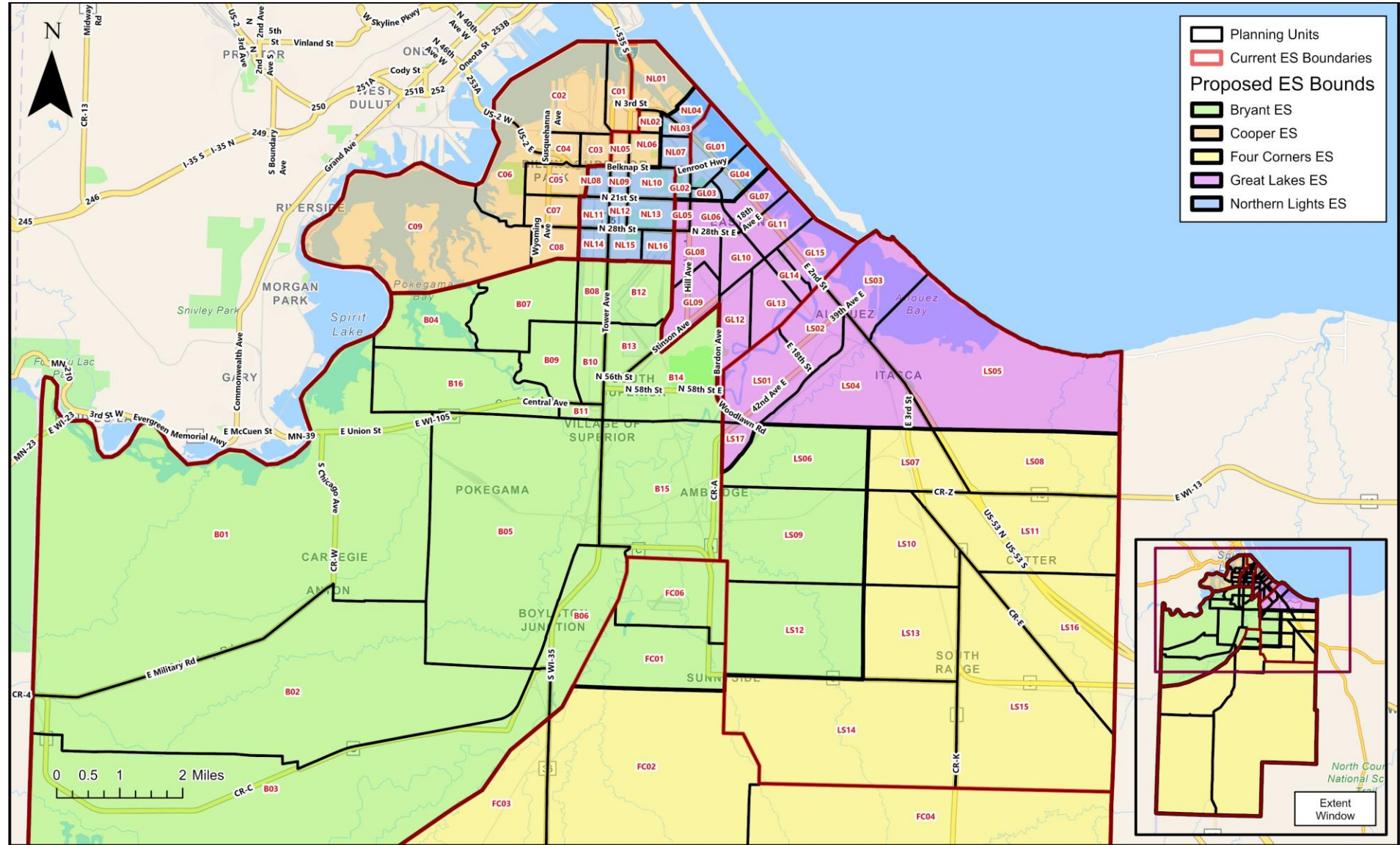


A row of yellow school buses is parked in a field of tall green grass with small yellow dandelions. The sky is bright blue with scattered white clouds. The buses are viewed from a low angle, showing their front and side profiles. The text 'OPTIONS' is centered over the middle of the image in a large, white, serif font.

OPTIONS

BOUNDARY SCENARIOS

► **OPTION 1**
MAP



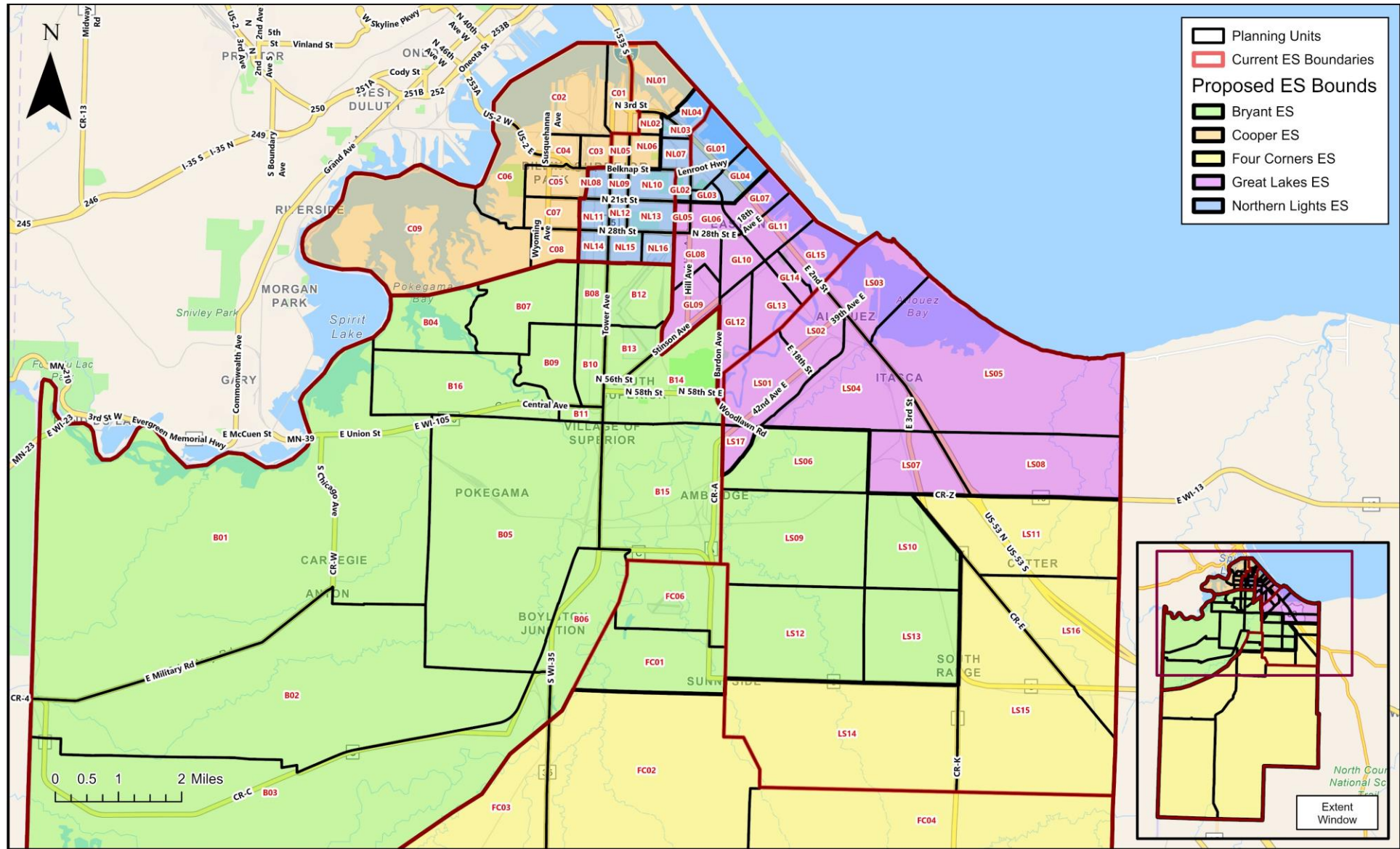
► **OPTION 1**
BY THE NUMBERS

Current									
School	Capacity	Boundary Enrollment	Transfers In	Total Enrollment	Utilization	SES %	Disability %		
Bryant ES	384	274	5	279	73%		47%		13%
Cooper ES	543	267	5	272	50%		43%		16%
Four Corners ES	234	171	0	171	73%		25%		11%
Great Lakes ES	429	326	4	330	77%		35%		15%
Lake Superior ES	234	143	4	147	63%		44%		18%
Northern Lights ES	764	461	5	466	61%		58%		21%
Grand Total	2,588	1,642	23	1,665	64%		45%		17%

Proposed Option 1									
School	Capacity	Boundary Enrollment	Transfers In	Total Enrollment	Utilization	SES %	Disability %		
Bryant ES	384	298	5	303	79%		47%		13%
Cooper ES	543	381	5	386	71%		48%		17%
Four Corners ES	234	204	4	208	89%		22%		12%
Great Lakes ES	429	303	4	307	72%		45%		16%
Northern Lights ES	764	456	5	461	60%		50%		20%
Grand Total	2,354	1,642	23	1,665	71%		45%		17%

Boundary	Total Students Moved From Boundary
Bryant ES	0
Cooper ES	0
Four Corners ES	13
Great Lakes ES	109
Northern Lights ES	114
Lake Superior ES	147
Total Students	383

▶ OPTION 2 MAP



▶ OPTION 2

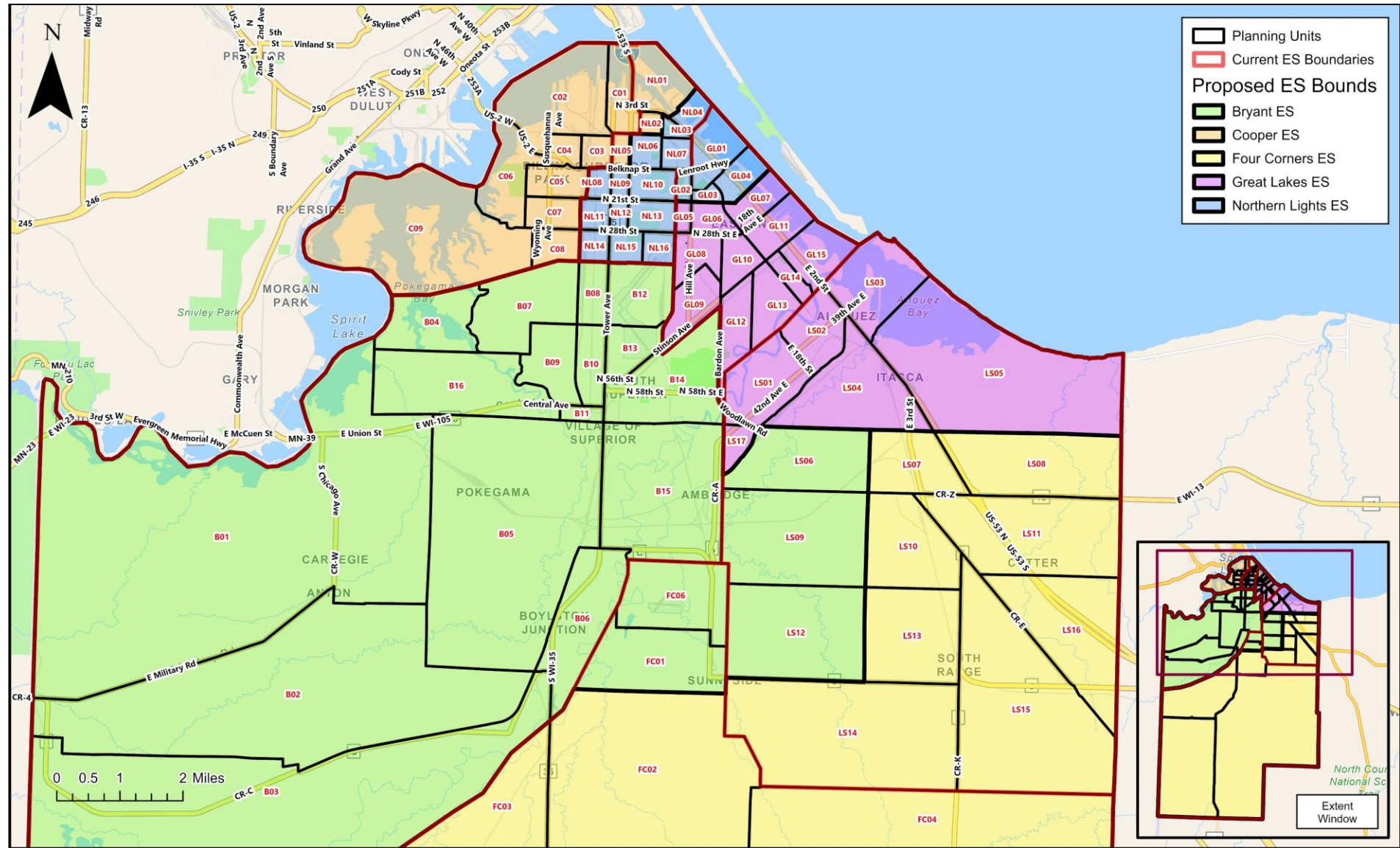
BY THE NUMBERS

Current								
School	Capacity	Boundary Enrollment	Transfers In	Total Enrollment	Utilization	SES %	Disability %	
Bryant ES	384	274	5	279	73%	<div style="width: 47%; background-color: #ffc107;"></div>	47%	<div style="width: 13%; background-color: #28a745;"></div>
Cooper ES	543	267	5	272	50%	<div style="width: 43%; background-color: #ffc107;"></div>	43%	<div style="width: 16%; background-color: #28a745;"></div>
Four Corners ES	234	171	0	171	73%	<div style="width: 25%; background-color: #ffc107;"></div>	25%	<div style="width: 11%; background-color: #28a745;"></div>
Great Lakes ES	429	326	4	330	77%	<div style="width: 35%; background-color: #ffc107;"></div>	35%	<div style="width: 15%; background-color: #28a745;"></div>
Lake Superior ES	234	143	4	147	63%	<div style="width: 44%; background-color: #ffc107;"></div>	44%	<div style="width: 18%; background-color: #28a745;"></div>
Northern Lights ES	764	461	5	466	61%	<div style="width: 58%; background-color: #ffc107;"></div>	58%	<div style="width: 21%; background-color: #28a745;"></div>
Grand Total	2,588	1,642	23	1,665	64%	<div style="width: 45%; background-color: #ffc107;"></div>	45%	<div style="width: 17%; background-color: #28a745;"></div>

Proposed Option 2								
School	Capacity	Boundary Enrollment	Transfers In	Total Enrollment	Utilization	SES %	Disability %	
Bryant ES	384	306	5	311	81%	<div style="width: 45%; background-color: #ffc107;"></div>	45%	<div style="width: 13%; background-color: #28a745;"></div>
Cooper ES	543	381	5	386	71%	<div style="width: 48%; background-color: #ffc107;"></div>	48%	<div style="width: 17%; background-color: #28a745;"></div>
Four Corners ES	234	187	4	191	82%	<div style="width: 24%; background-color: #ffc107;"></div>	24%	<div style="width: 12%; background-color: #28a745;"></div>
Great Lakes ES	429	312	4	316	74%	<div style="width: 44%; background-color: #ffc107;"></div>	44%	<div style="width: 16%; background-color: #28a745;"></div>
Northern Lights ES	764	456	5	461	60%	<div style="width: 50%; background-color: #ffc107;"></div>	50%	<div style="width: 20%; background-color: #28a745;"></div>
Grand Total	2,354	1,642	23	1,665	71%	<div style="width: 45%; background-color: #ffc107;"></div>	45%	<div style="width: 17%; background-color: #28a745;"></div>

Boundary	Total Students Moved From Boundary
Bryant ES	0
Cooper ES	0
Four Corners ES	13
Great Lakes ES	109
Northern Lights ES	114
Lake Superior ES	147
Total Students	383

▶ **OPTION 3**
MAP



▶ OPTION 3

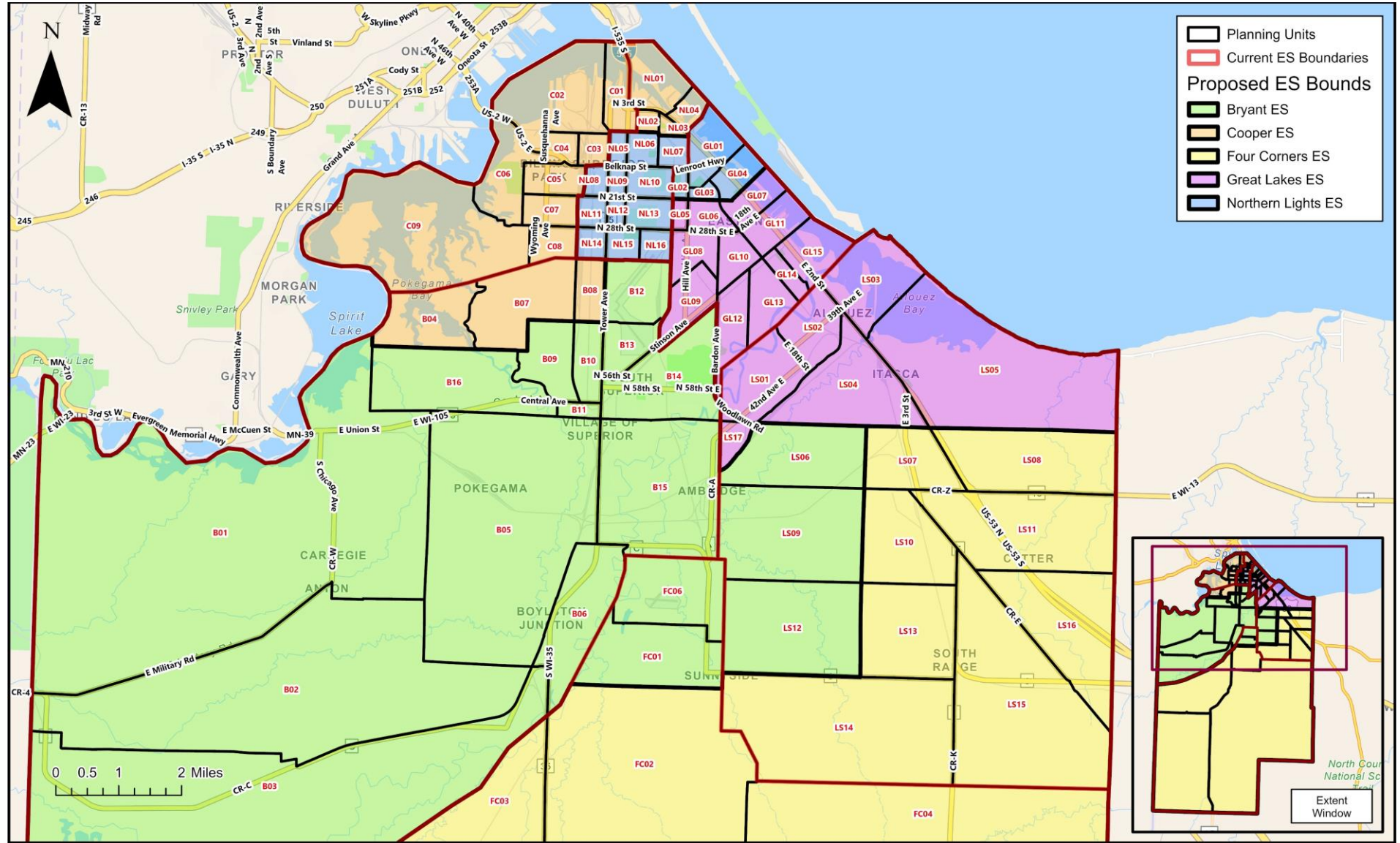
BY THE NUMBERS

Current									
School	Capacity	Boundary Enrollment	Transfers In	Total Enrollment	Utilization	SES %	Disability %		
Bryant ES	384	274	5	279	73%	<div style="width: 47%; background-color: #ffc107;"></div>	47%	<div style="width: 13%; background-color: #28a745;"></div>	13%
Cooper ES	543	267	5	272	50%	<div style="width: 43%; background-color: #ffc107;"></div>	43%	<div style="width: 16%; background-color: #28a745;"></div>	16%
Four Corners ES	234	171	0	171	73%	<div style="width: 25%; background-color: #ffc107;"></div>	25%	<div style="width: 11%; background-color: #28a745;"></div>	11%
Great Lakes ES	429	326	4	330	77%	<div style="width: 35%; background-color: #ffc107;"></div>	35%	<div style="width: 15%; background-color: #28a745;"></div>	15%
Lake Superior ES	234	143	4	147	63%	<div style="width: 44%; background-color: #ffc107;"></div>	44%	<div style="width: 18%; background-color: #28a745;"></div>	18%
Northern Lights ES	764	461	5	466	61%	<div style="width: 58%; background-color: #ffc107;"></div>	58%	<div style="width: 21%; background-color: #28a745;"></div>	21%
Grand Total	2,588	1,642	23	1,665	64%	<div style="width: 45%; background-color: #ffc107;"></div>	45%	<div style="width: 17%; background-color: #28a745;"></div>	17%

Proposed Option 3									
School	Capacity	Boundary Enrollment	Transfers In	Total Enrollment	Utilization	SES %	Disability %		
Bryant ES	384	298	5	303	79%	<div style="width: 47%; background-color: #ffc107;"></div>	47%	<div style="width: 13%; background-color: #28a745;"></div>	13%
Cooper ES	543	327	5	332	61%	<div style="width: 46%; background-color: #ffc107;"></div>	46%	<div style="width: 18%; background-color: #28a745;"></div>	18%
Four Corners ES	234	204	4	208	89%	<div style="width: 22%; background-color: #ffc107;"></div>	22%	<div style="width: 12%; background-color: #28a745;"></div>	12%
Great Lakes ES	429	303	4	307	72%	<div style="width: 45%; background-color: #ffc107;"></div>	45%	<div style="width: 16%; background-color: #28a745;"></div>	16%
Northern Lights ES	764	510	5	515	67%	<div style="width: 51%; background-color: #ffc107;"></div>	51%	<div style="width: 19%; background-color: #28a745;"></div>	19%
Grand Total	2,354	1,642	23	1,665	71%	<div style="width: 45%; background-color: #ffc107;"></div>	45%	<div style="width: 17%; background-color: #28a745;"></div>	17%

Boundary	Total Students Moved From Boundary
Bryant ES	0
Cooper ES	0
Four Corners ES	13
Great Lakes ES	109
Northern Lights ES	60
Lake Superior ES	147
Total Students	329

▶ **OPTION 4**
MAP



▶ OPTION 4

BY THE NUMBERS

Current									
School	Capacity	Boundary Enrollment	Transfers In	Total Enrollment	Utilization	SES %	Disability %		
Bryant ES	384	274	5	279	73%	<div style="width: 47%;"></div>	47%	<div style="width: 13%;"></div>	13%
Cooper ES	543	267	5	272	50%	<div style="width: 43%;"></div>	43%	<div style="width: 16%;"></div>	16%
Four Corners ES	234	171	0	171	73%	<div style="width: 25%;"></div>	25%	<div style="width: 11%;"></div>	11%
Great Lakes ES	429	326	4	330	77%	<div style="width: 35%;"></div>	35%	<div style="width: 15%;"></div>	15%
Lake Superior ES	234	143	4	147	63%	<div style="width: 44%;"></div>	44%	<div style="width: 18%;"></div>	18%
Northern Lights ES	764	461	5	466	61%	<div style="width: 58%;"></div>	58%	<div style="width: 21%;"></div>	21%
Grand Total	2,588	1,642	23	1,665	64%	<div style="width: 45%;"></div>	45%	<div style="width: 17%;"></div>	17%

Proposed Option 4									
School	Capacity	Boundary Enrollment	Transfers In	Total Enrollment	Utilization	SES %	Disability %		
Bryant ES	384	280	5	285	74%	<div style="width: 45%;"></div>	45%	<div style="width: 13%;"></div>	13%
Cooper ES	543	333	5	338	62%	<div style="width: 48%;"></div>	48%	<div style="width: 18%;"></div>	18%
Four Corners ES	234	204	4	208	89%	<div style="width: 22%;"></div>	22%	<div style="width: 12%;"></div>	12%
Great Lakes ES	429	303	4	307	72%	<div style="width: 45%;"></div>	45%	<div style="width: 16%;"></div>	16%
Northern Lights ES	764	522	5	527	69%	<div style="width: 50%;"></div>	50%	<div style="width: 20%;"></div>	20%
Grand Total	2,354	1,642	23	1,665	71%	<div style="width: 45%;"></div>	45%	<div style="width: 17%;"></div>	17%

Boundary	Total Students Moved From Boundary
Bryant ES	18
Cooper ES	0
Four Corners ES	13
Great Lakes ES	109
Northern Lights ES	48
Lake Superior ES	147
Total Students	335

▶ ADDITIONAL RESOURCES



SURVEY



WEBSITE

▶ QUESTIONS?

- ONLINE SUBMIT A QUESTION FORM
- FORMS OUTSIDE THE COMMUNITY EVENTS ROOM