



FACILITY MASTER PLAN:

FINAL REPORT & RECOMMENDATIONS





AGENDA



- I. Process & Timeline
- II. Background Data
- III. Community Meetings & Results
 - i. Futures Conference
 - ii. Educational Framework
 - iii. Options
- IV. Final Recommendations
- V. Questions & Answers
- VI. Wrap Up, Next Steps, Adjourn



PROCESS & TIMELINE





PROCESS OVERVIEW





TIMELINE



Overall Project Timeline:

Task / Activity	2021												2022							
	April	May	June	July	August	September	October	November	December	January	February	March	April	May	June	July	August	September	October	November
Kickoff Meeting																				
Assessment Validation																				
Background Data Collection																				
Futures Conference																				
Steering Committee																				
Educational Framework																				
Options Development																				
Community Feedback on Options																				
Recommendation Development																				
Board Meetings																				
Controlling Board																				
November Ballot Deadline																				

Community Meeting Schedule:

- ✓ **Educational Futures Conference:** September 22, 6:00 pm – 8:00 pm @ NHS Cafeteria
- ✓ **Community Dialogue #1/ Educational Framework:** November 10 , 6:00 pm – 8:00 pm @ NHS Cafeteria
- ✓ **Community Dialogue #2/ Facility Options:** February 2, 6:00 pm – 8:00 pm @ NHS Cafeteria
- **Board Meeting:** March 21, 2022



STEERING COMMITTEE SCHEDULE



- Steering Committee #1: October 6 Nordonia Middle School Media Center
- Steering Committee #2: October 20 Northfield Elementary Cafeteria
- **Community Dialogue #1/ Educational Framework: November 10 Lee Eaton Elementary Cafeteria**
- Steering Committee #3: December 1 Ledgeview Elementary Cafeteria
- Steering Committee #4: December 15 Rushwood Elementary Cafeteria
- Steering Committee #5: January 12 Northfield Elementary Cafeteria
- **Community Dialogue #2/ Facility Options: February 2 Nordonia High School Cafeteria**
- Steering Committee #6: February 23 Northfield Elementary Cafeteria
- Final Board Presentation: March 21, 2022

All meetings were held on Wednesdays from 6:00 pm – 8:00 pm



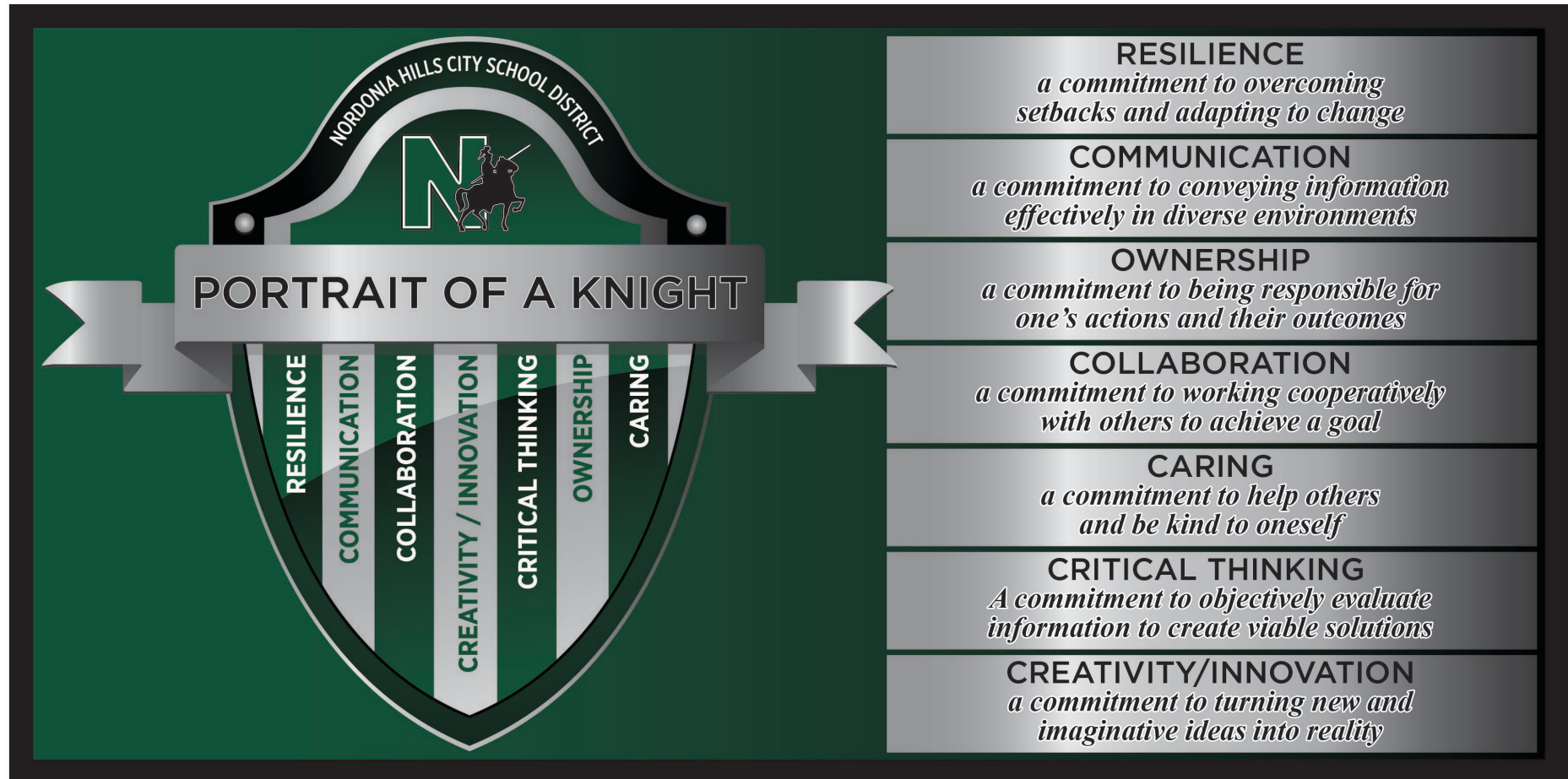
BACKGROUND DATA



PORTRAIT OF A KNIGHT



- Developed through a community process
- Adopted over a year ago
- Board approved





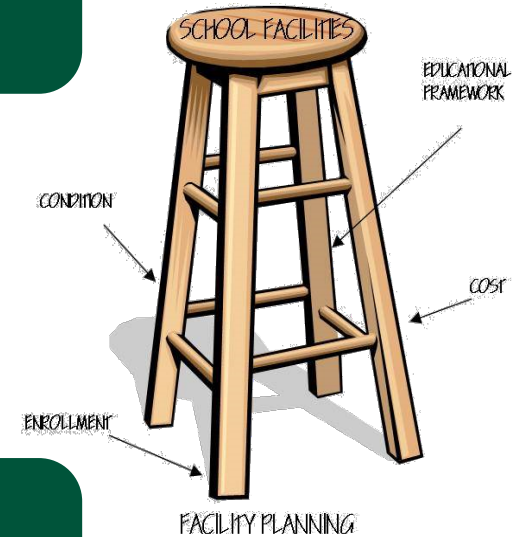
FACILITY MASTER PLAN



Facility Master Plan aligns facilities to the Portrait of a Knight

- Educational Framework
- Condition & Adequacy Assessments
- Enrollment vs. Capacity
- Cost to correct deficiencies & provide equitable facilities

Validating Needs – OFCC Assessment Data





HISTORICAL ENROLLMENT



Nardon Hills Historical Enrollments by School Year												
Grade	2010-11	2011-12	2012-13	2013-14	2014-15	2015-16	2016-17	2017-18	2018-19	2019-20	2020-21	2021-22
PK	54	63	48	35	50	-	-	-	-	-	-	-
K	225	257	257	264	252	227	232	230	246	232	212	177
1	270	235	263	255	279	265	228	246	241	254	246	220
2	274	265	238	251	255	289	261	238	256	232	262	227
3	298	275	271	241	262	264	307	271	248	258	241	258
4	286	297	277	284	246	263	263	310	280	245	263	234
PK-4 Subtotal	1,407	1,392	1,354	1,330	1,344	1,308	1,291	1,295	1,271	1,221	1,224	1,116
5	260	285	291	272	288	255	264	255	315	292	256	255
6	302	260	287	294	276	287	261	282	263	318	304	249
5-6 Grades Subtotal	562	545	578	566	564	542	525	537	578	610	560	504
7	340	316	271	284	299	280	291	271	286	273	326	307
8	322	352	317	267	280	309	283	291	271	281	273	328
7-8 Grades Subtotal	662	668	588	551	579	589	574	562	557	554	599	635
9	373	367	376	325	300	305	322	297	319	286	302	297
10	355	360	352	364	325	290	309	319	290	320	293	307
11	369	338	337	329	342	312	286	305	326	288	332	288
12	339	371	331	339	332	346	318	293	304	321	286	331
9-12 Grades Subtotal	1,436	1,436	1,396	1,357	1,299	1,253	1,235	1,214	1,239	1,215	1,213	1,223
PK-12 Total	4,067	4,041	3,916	3,804	3,786	3,692	3,625	3,608	3,645	3,600	3,596	3,478

Source: Ohio Department of Education



PROJECTED ENROLLMENT

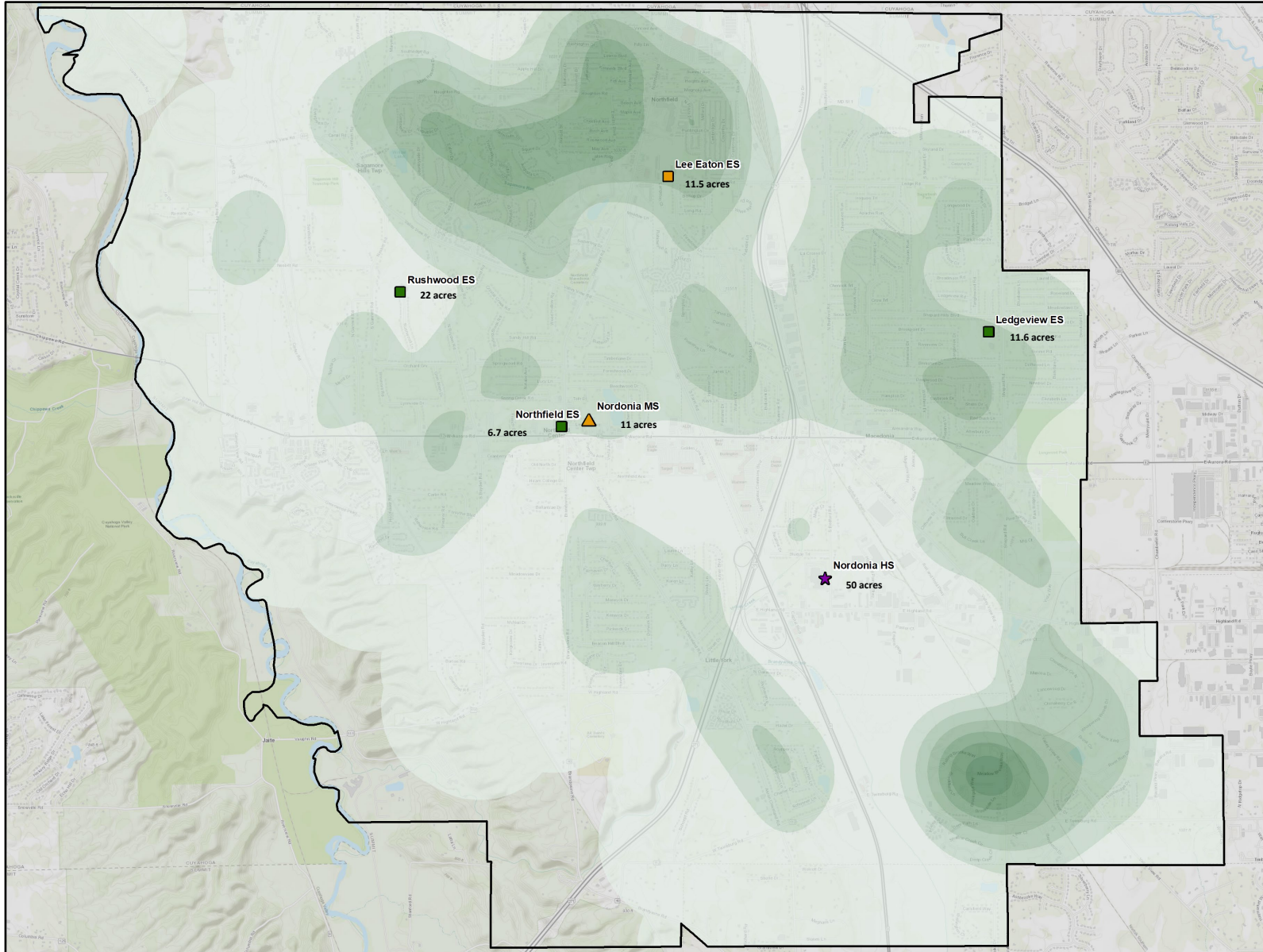


Nordonia Hills Projected Enrollments by School Year								
Grade	2022-23	2023-24	2024-25	2025-26	2026-27	2027-28	2028-29	2029-30
PK special needs	40	37	38	38	38	38	38	38
K	239	219	224	224	224	224	224	224
1	236	251	229	234	234	234	234	234
2	219	239	254	232	238	238	238	238
3	208	227	247	263	240	246	246	246
4	260	209	228	249	264	242	247	247
PK-4 Subtotal	1,202	1,182	1,220	1,240	1,238	1,222	1,227	1,227
5	277	263	212	231	252	267	245	250
6	254	285	270	217	237	259	275	251
5-6 Grades Subtotal	531	548	482	448	489	526	520	501
7	280	259	291	276	222	242	264	281
8	269	280	259	291	276	222	242	264
7-8 Grades Subtotal	549	539	550	567	498	464	506	545
9	332	287	299	277	311	295	237	259
10	349	332	288	299	277	311	295	237
11	217	258	246	213	221	205	230	218
12	226	218	260	248	214	223	206	232
9-12 Grades Subtotal	1,124	1,095	1,093	1,037	1,023	1,034	968	946
Career Tech Off-Site	113	121	129	118	111	109	111	115
PK-12 Total	3,519	3,485	3,474	3,410	3,359	3,355	3,332	3,334

Source: FutureThink



DISTRICT MAP





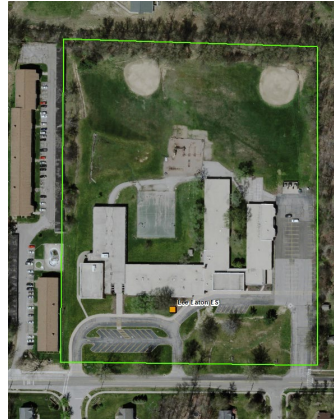
ALL SITES



Ledgeview ES



Lee Eaton ES



Rushwood ES



Nordonia HS / Transportation



Northfield ES



Nordonia MS





COMMUNITY MEETINGS & RESULTS



FUTURES CONFERENCE SUMMARY



- Wednesday, September 22, 2021
- Approximately 75 attendees
- Online Questionnaire for a week following in person meeting – with approximately 20 respondents
- 4 Questions:
 1. *What qualities should the students of 2050 have?*
 2. *What are the careers of 2050?*
 3. *What does the school of 2050 look like?*
 4. *How do the facilities support or hinder “Portrait of a Knight”?*



EDUCATIONAL FRAMEWORK MEETING



Held Nov. 10th Lee Eaton ES

- 21 committee members, and 17 non-committee members attended (this is lower participation from the community than we would have liked)
- 6 groups completed the survey
- An additional 815 online surveys were collected (This is a really big number – a good thing!)

Observations

- Doing nothing is not an option
- There is support for reducing the number of facilities
- There is support for three total facilities

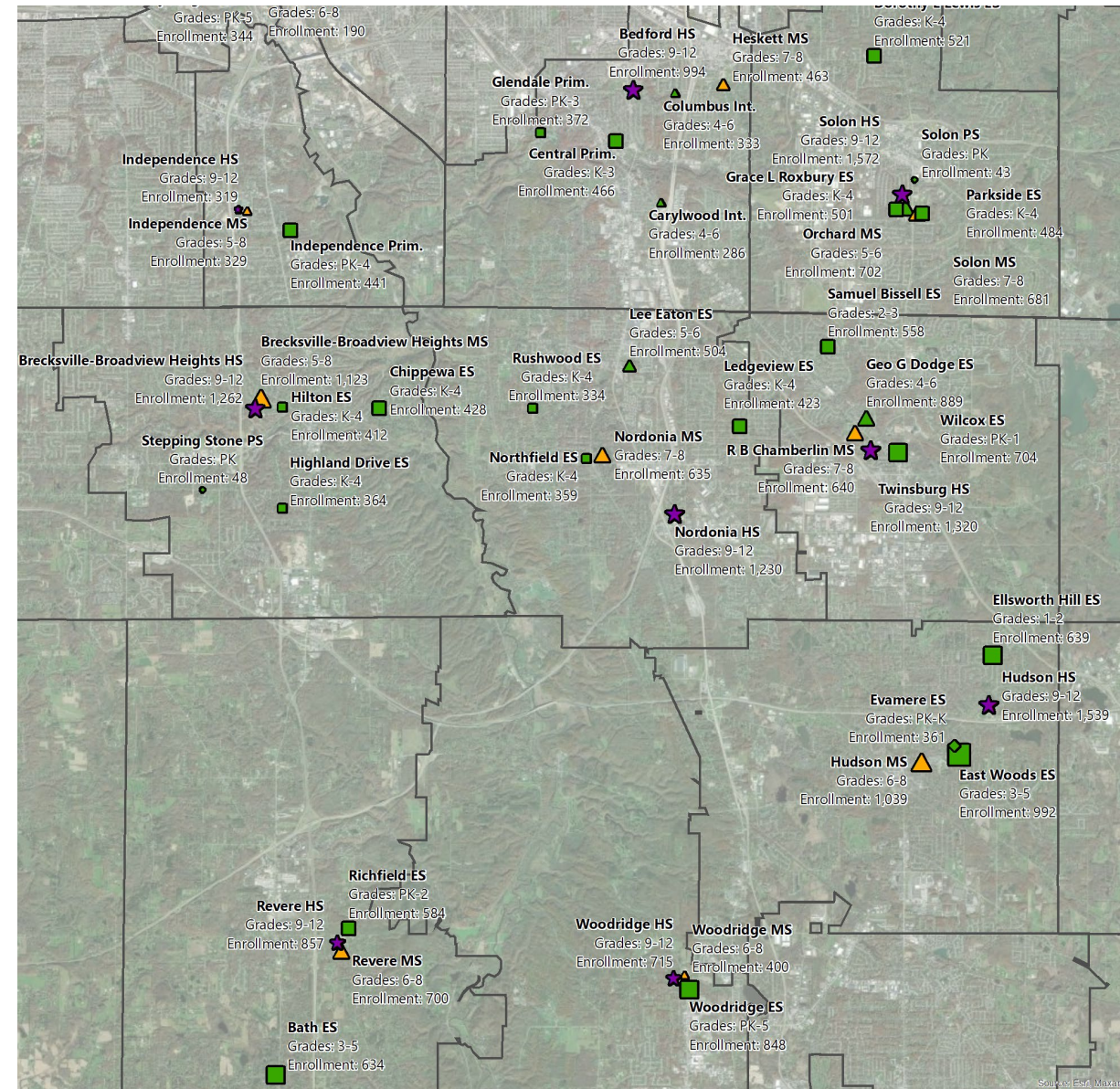


MAP OF NEIGHBORING SCHOOL DISTRICTS



District	Schools	Grades Served	Enrollment	Students / Grade
Bedford City Schools: PK-3, 4-6, 7-8, 9-12 2,914 Students	Central Primary School	K-3	466	117
	Glendale Primary School	PK-3	372	88
	Carylwood Intermediate School	4-6	286	95
	Columbus Intermediate School	4-6	333	111
	Heskett Middle School	7-8	463	232
	Bedford High School	9-12	994	249
Brecksville-Broadview Heights City Schools: PK, K-4, 5-8, 9-12 3,637 Students	Stepping Stone Preschool	PK	48	48
	Chippewa Elementary School	K-4	428	86
	Highland Drive Elementary School	K-4	364	73
	Hilton Elementary School	K-4	412	82
	Brecksville-Broadview Heights Middle School	5-8	1,123	281
	Brecksville-Broadview Heights High School	9-12	1,262	316
Hudson City Schools: PK-K, 1-2, 3-5, 6-8, 9-12 4,570 Students	Evamere Elementary School	PK-K	361	289
	Ellsworth Hill Elementary School	1-2	639	320
	East Woods Elementary School	3-5	992	331
	Hudson Middle School	6-8	1,039	346
	Hudson High School	9-12	1,539	385
Independence Local Schools: PK-4, 5-8, 9-12 1,089 Students	Independence Primary School	PK-4	441	84
	Independence Middle School	5-8	329	82
	Independence High School	9-12	319	80
Nordonia Hills City Schools K-4, 5-6, 7-8, 9-12 3,485 Students	Ledgeview Elementary School	K-4	423	85
	Northfield Elementary School	K-4	359	72
	Rushwood Elementary School	K-4	334	67
	Lee Eaton Elementary School	5-6	504	252
	Nordonia Middle School	7-8	635	318
Revere Local Schools PK-2, 3-5, 6-8, 9-12 2,775 Students	Nordonia High School	9-12	1,230	308
	Richfield Elementary School	PK-2	584	180
	Bath Elementary School	3-5	634	211
	Revere Middle School	6-8	700	233
	Revere High School	9-12	857	214
Solon City Schools PK, K-4, 5-6, 7-8, 9-12 4,504 Students	Solon Preschool	PK	43	43
	Dorothy E Lewis Elementary School	K-4	521	104
	Grace L Roxbury Elementary School	K-4	501	100
	Parkside Elementary School	K-4	484	97
	Orchard Middle School	5-6	702	351
	Solon Middle School	7-8	681	341
Twinsburg City Schools PK-1, 2-3, 4-6, 7-8, 9-12 4,111 Students	Solon High School	9-12	1,572	393
	Wilcox Elementary School	PK-1	704	313
	Samuel Bissell Elementary School	2-3	558	279
	Geo G Dodge Elementary School	4-6	889	296
	R B Chamberlin Middle School	7-8	640	320
Woodridge Local Schools PK-5, 6-8, 9-12 1,963 Students	Twinsburg High School	9-12	1,320	330
	Woodridge Elementary School	PK-5	848	136
	Woodridge Middle School	6-8	400	133
	Woodridge High School	9-12	715	179

Source (2020): <https://education.ohio.gov/Topics/Data/Frequently-Requested-Data/Enrollment-Data>





EDUCATIONAL FRAMEWORK SUMMARY



Observations

- Doing nothing is not an option
- There is support for reducing the number of facilities
- There is support for three total facilities (One ES, One MS, One HS)

Elementary Sites	
1	100
2	85
3	128
4	118
5	6
6	2

Secondary Sites	
1	3
2	420
3	27

Total Sites	
2	2
3	97
4	81
5	115
6	128
7	9
8	5



COMMUNITY MEETING #2: FACILITY OPTIONS



CURRENT FACILITIES: RENOVATION CONSIDERATIONS



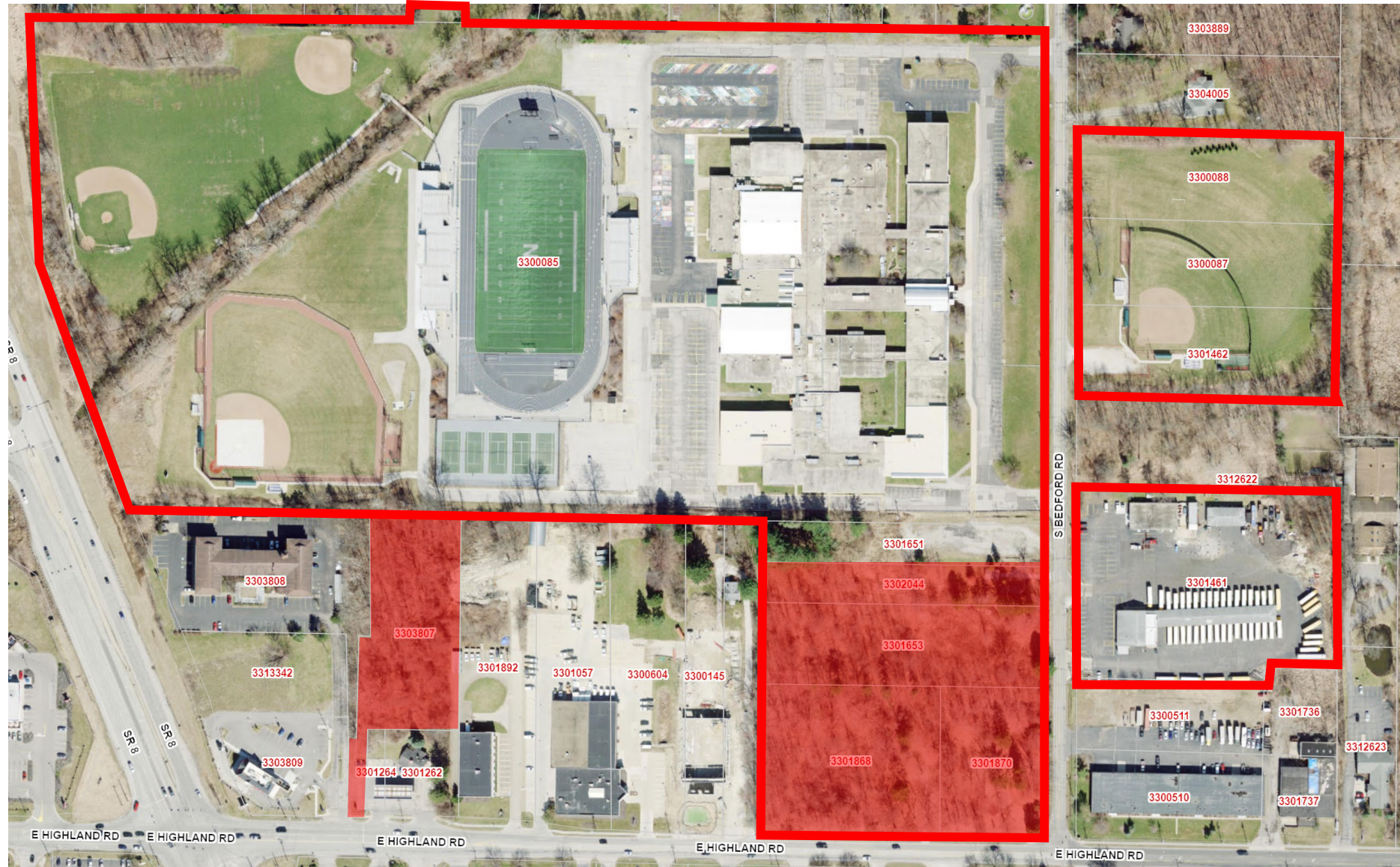
Facility	Action	Grade Configuration	Proposed Enrollment	Square Footage	Capital Costs	10-Year Operational Savings
Ledgeview ES	Renovate	K-4	394	72,572	\$14.7M	None
Northfield ES	Renovate	K-4	394	49,085 + 13,506	\$15.2M	None
Rushwood ES	Renovate	K-4	394	48,593	\$11.1M	None
Lee Eaton ES	Renovate	5-6	482	63,114	\$14.5M	None
Nordonia MS	Renovate	7-8	550	117,696	\$20.8M	None
Nordonia High School	Renovate	9-12	1,093	226,431	\$42.4M	None
Total			3,307	591,017	\$118.7M	None

Costs to renovate existing facilities

- Do not include any changes to the functionality of the facility (No reprogramming dollars)
- Costs are based on 2021 assessment costs and are **NOT** updated based on current market volatility (15% to 17% inflation)
- The Steering Committee does not feel that this is a good option considering that there is no operational efficiency gained, and if we consider market volatility, this could be 75%-80% the cost of building newer and fewer facilities



What about the High School?





DEBT CAPACITY



- The District has a current ***debt capacity of \$150 to \$165*** million based on current conditions. This has the potential to change based on fluctuations in interest rates and assessed valuation.
 - The Millage Rate for a Bond of \$150million would be 6.43
 - The Millage Rate for a Bond of \$165million would be 7.07
- Current Construction Market: Due to supply chain and other factors, we are seeing project costs coming in **15%** higher than they would have been last year. Pre-pandemic escalation was typically **3-5%** per year.
- Construction costs used to estimate new construction are **\$325** per square foot, plus an additional **\$10** per square foot for demolition. We feel like this is a relatively safe number, and hope that the costs can be lower.



OPTIONS SUMMARY



	Option 1	Option 2	Option 3	Option 4
Grade Configuration	K-3, 4-6, 7-8, 9-12	Two K-4, 5-8, 9-12	K-4, 5-8, 9-12	K-3, 4-6, 7-12
Total Buildings	4	4	3	3
Total Square Footage	515,242 sq. ft.	511,006 sq. ft.	500,263 sq. ft.	502,242 sq. ft.
Total Costs	\$173.3m	\$172.1m	\$168.6m	\$169.1m
10-Year Operational Savings	\$14m	\$14m	\$21m	\$21m

	Option 1	Option 2	Option 3	Option 4
	 <p>9-12 1,093 students \$67.3M</p>  <p>7-8 550 students \$31.4M</p>  <p>4-6 710 students \$33.2M</p>  <p>K-3 954 students \$34.7M</p>	 <p>9-12 1,093 students \$67.3M</p>  <p>5-8 1,032 students \$52.6M</p>  <p>K-4 591 students \$23M</p>  <p>K-4 591 students \$23M</p>	 <p>9-12 1,093 students \$67.3M</p>  <p>5-8 1,032 students \$51.9M</p>  <p>K-4 1,182 students \$42M</p>	 <p>7-12 1643 students \$94M</p>  <p>4-6 710 students \$33.2M</p>  <p>K-3 954 students \$34.5M</p>



FINAL STEERING COMMITTEE MEETING: COMMUNITY MEETING #2 RESULTS



RESULTS OF OPTIONS CD



Site	Suitability
Ledgeview	☹️
Northfield	☹️
Rushwood	😊
Lee Eaton	😊
Nordonia MS	☹️
Nordonia HS	😊

- **Status Quo is not an option.**
- **Preference is new construction vs. renovated spaces.**
- **Preferred elementary site is Rushwood.**
- **Middle School is either new building at Lee Eaton or new building at the current MS site.**
- **High School is where it is.**
- **The District should have enough money that they should be able to lower taxes, especially with the MGM money.**



INDIVIDUAL RESULTS VS. GROUP RESULTS



The participants that attended the meeting on February 2nd came to a different conclusion than those that completed the survey online.

- In person meeting preferred option 4.
- Online results preferred option 3 and disliked option 4.
- There were over 1,000 views of the survey, and only 486 views of the presentation video.
- The steering committee responses did NOT influence the groups towards option 4.



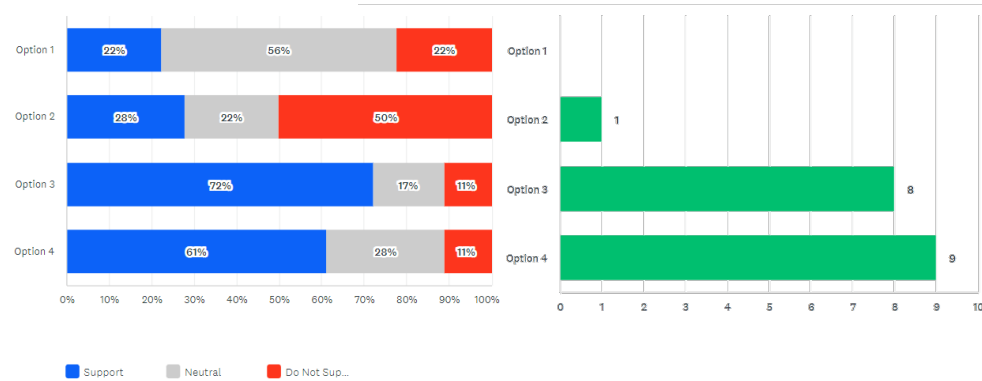
INDIVIDUAL RESULTS VS. GROUP RESULTS



Steering Committee Only

Please select your level of support for each of the options independently

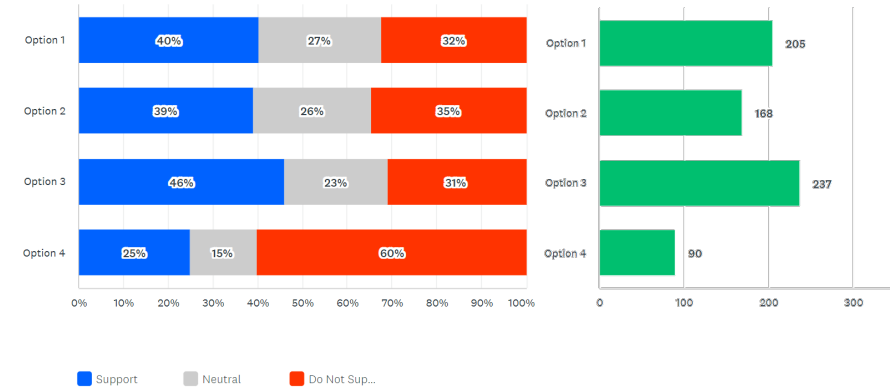
Answered: 18 Skipped: 0



All Responses

Please select your level of support for each of the options independently

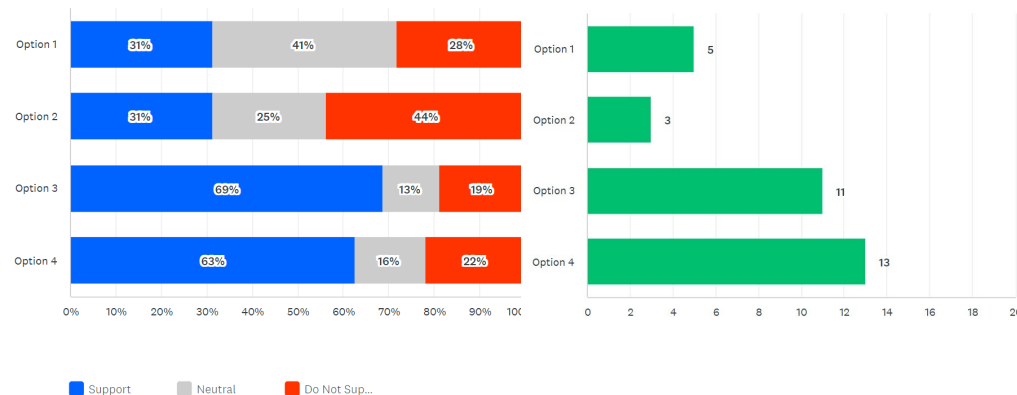
Answered: 758 Skipped: 244



All In-Person Responses

Please select your level of support for each of the options independently

Answered: 32 Skipped: 3



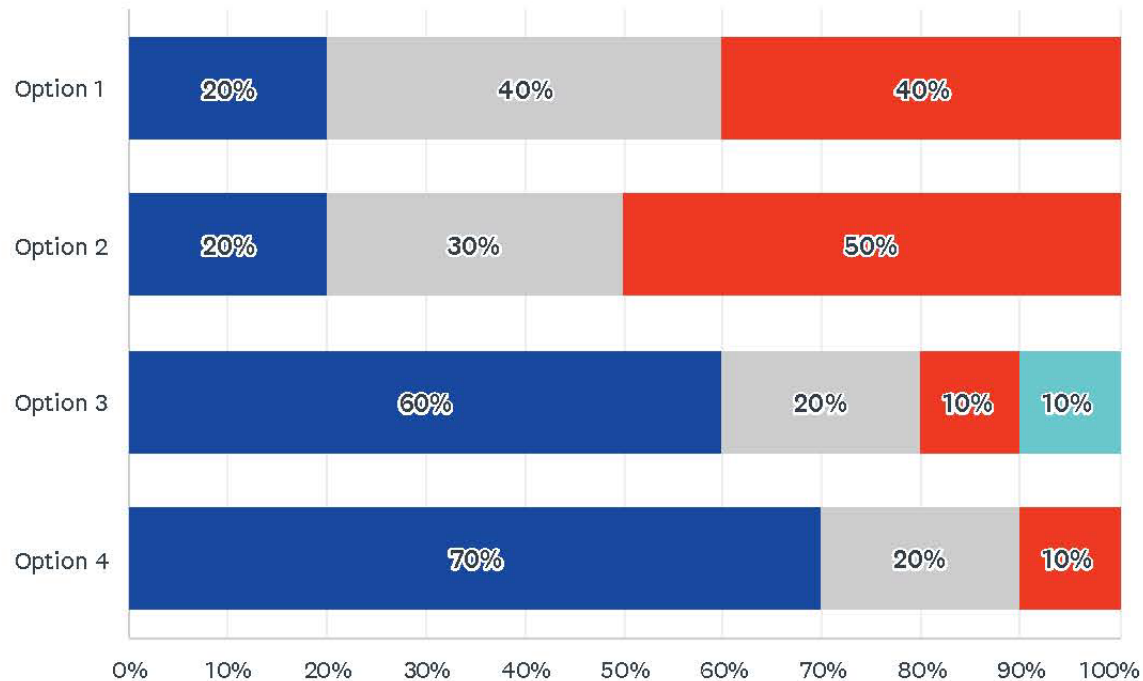


GROUP RESULTS

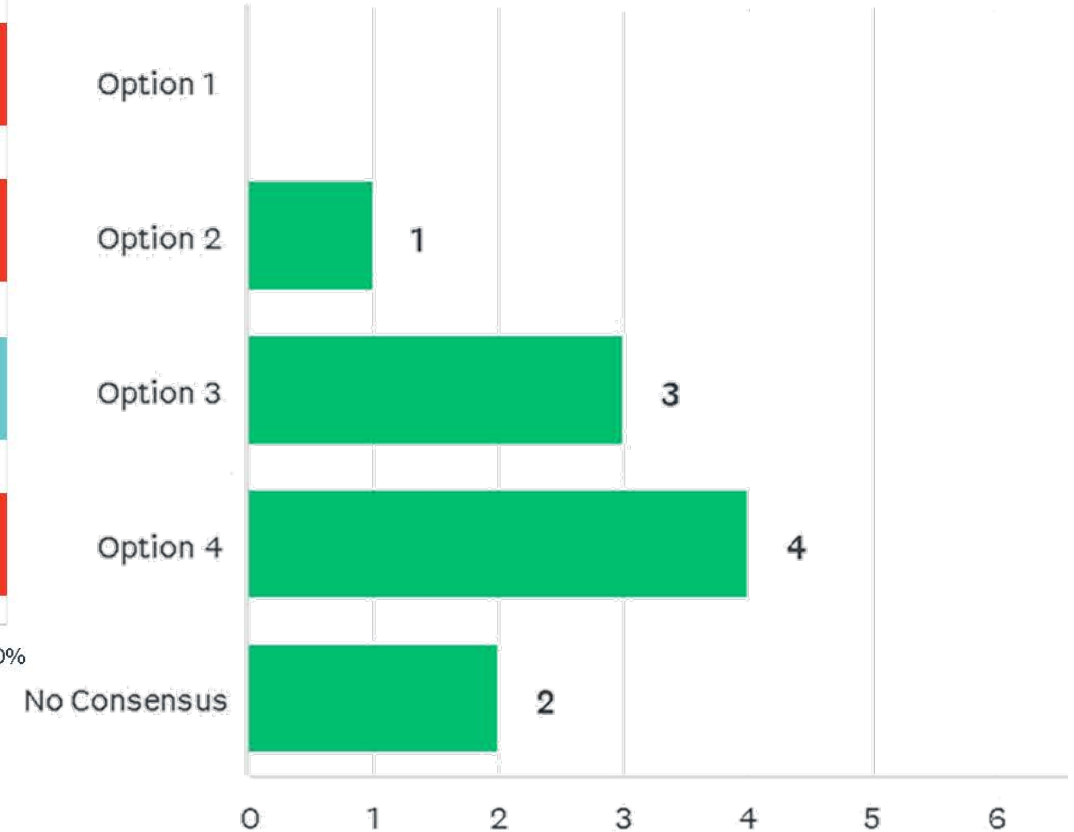


Q1 Please select your level of support for each of the options independently

Answered: 10 Skipped: 0



Support Neutral Do Not Sup... No Consen...



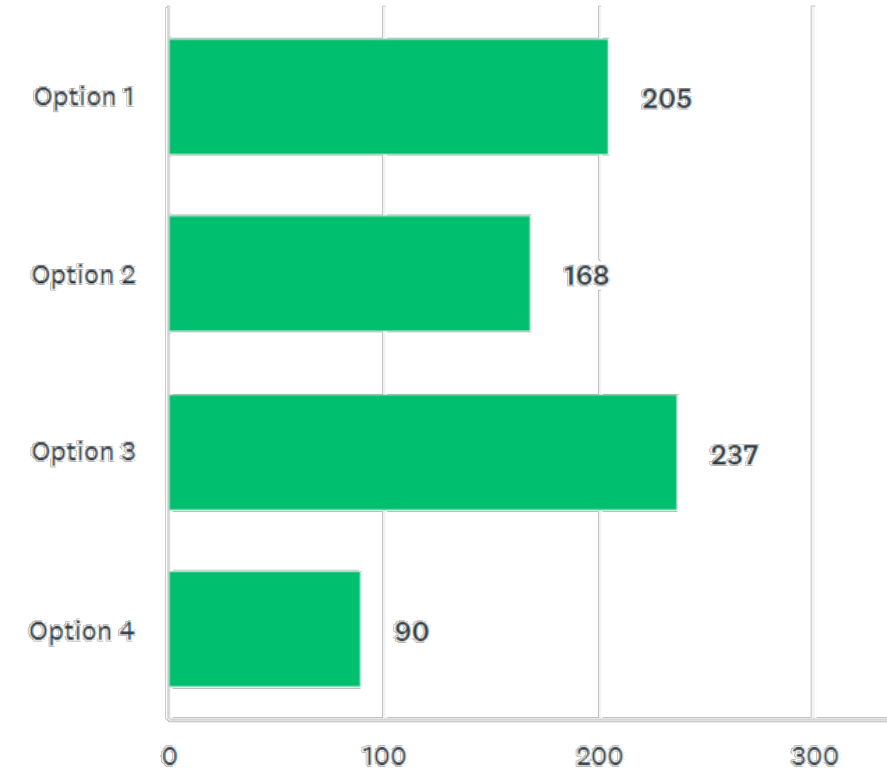
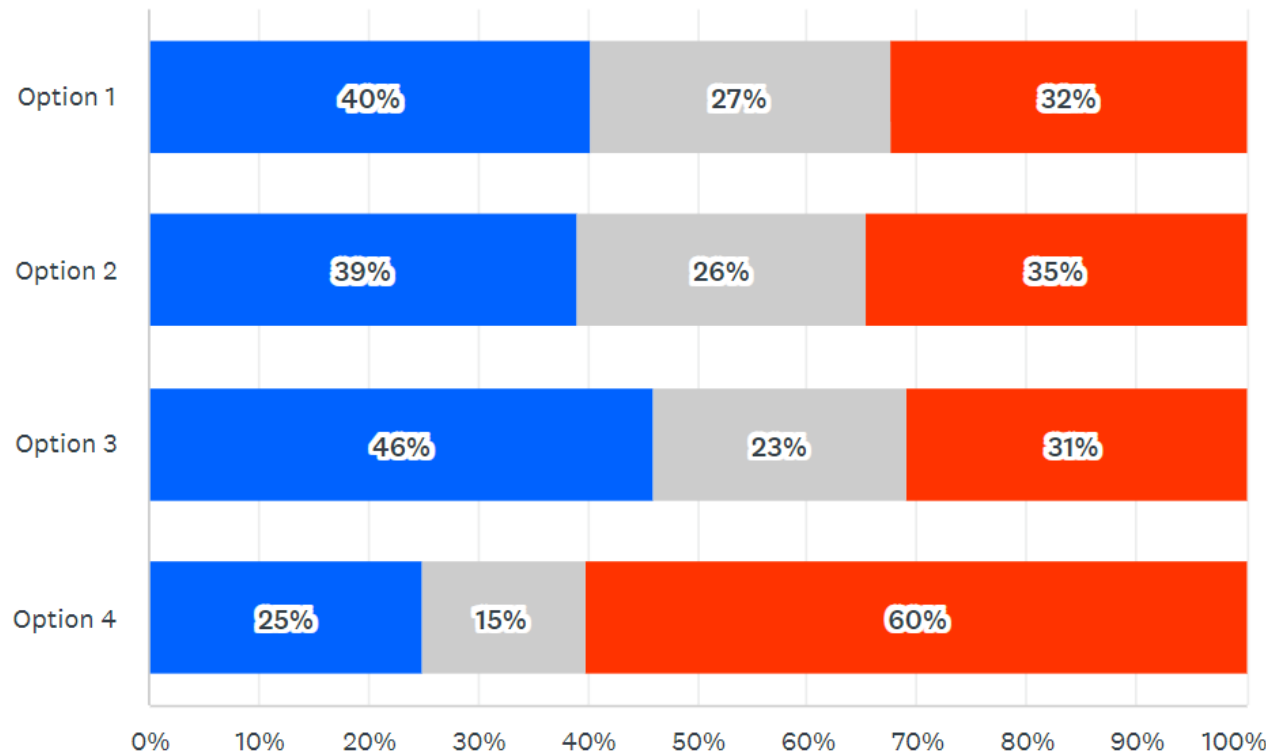


INDIVIDUAL RESULTS



Please select your level of support for each of the options independently

Answered: 758 Skipped: 244



■ Support ■ Neutral ■ Do Not Sup...

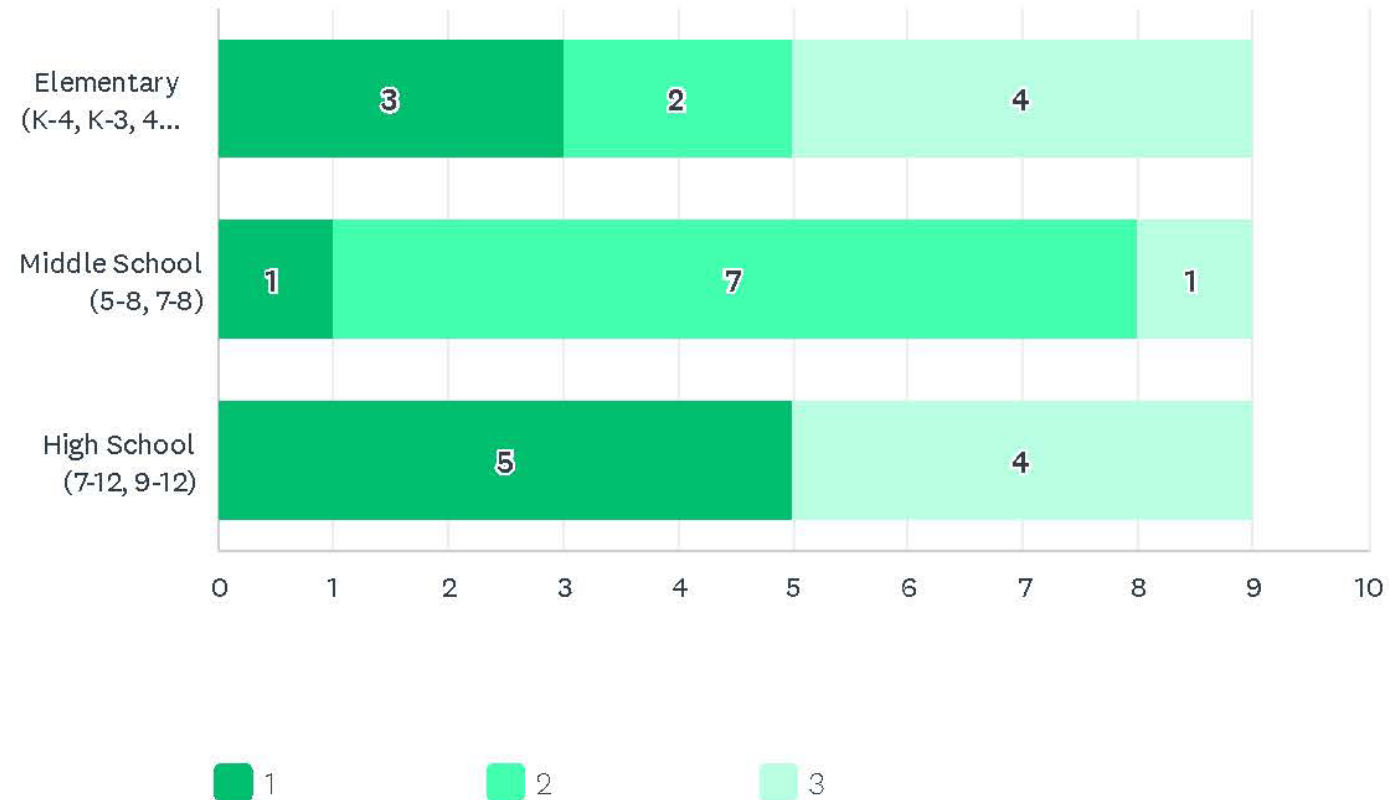


GROUP RESULTS



Q4 Given the realities of escalating costs and affordability, how would you prioritize buildings by grade level.

Answered: 9 Skipped: 1



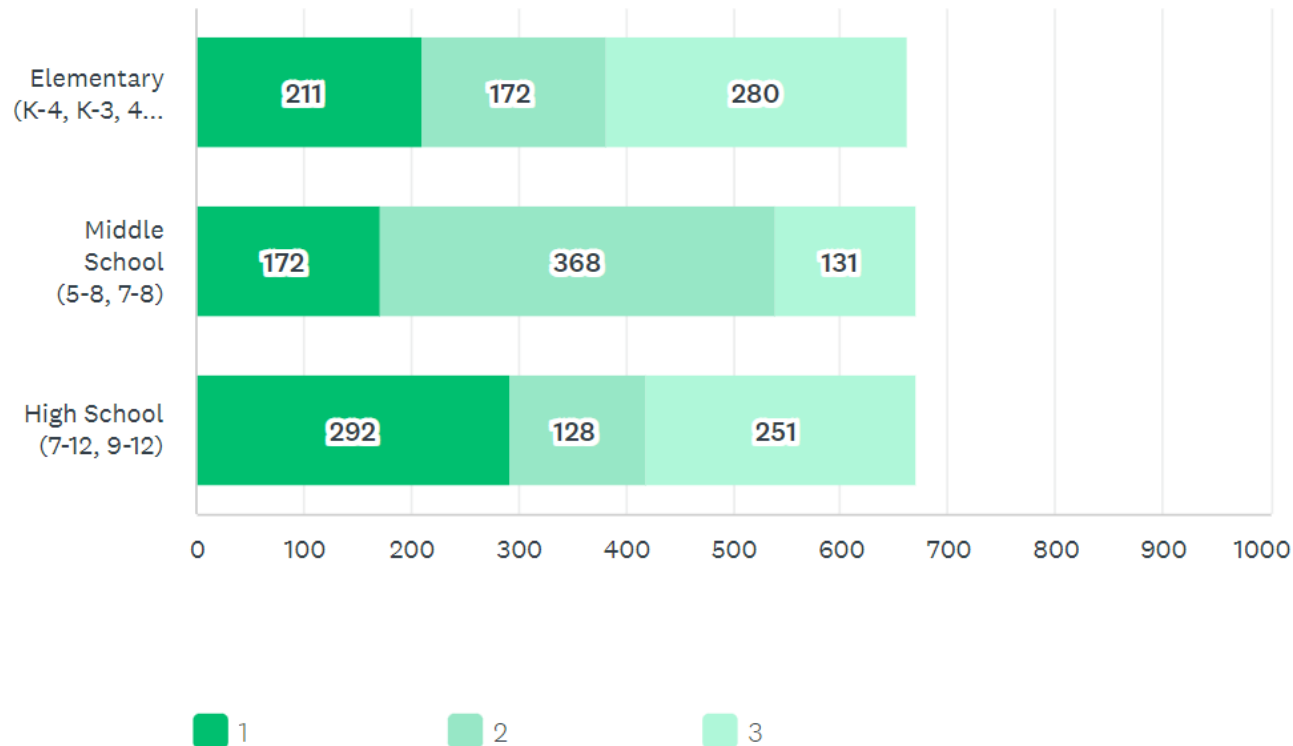


INDIVIDUAL RESULTS



Given the realities of escalating costs and affordability, how would you prioritize buildings by grade level.

Answered: 678 Skipped: 324



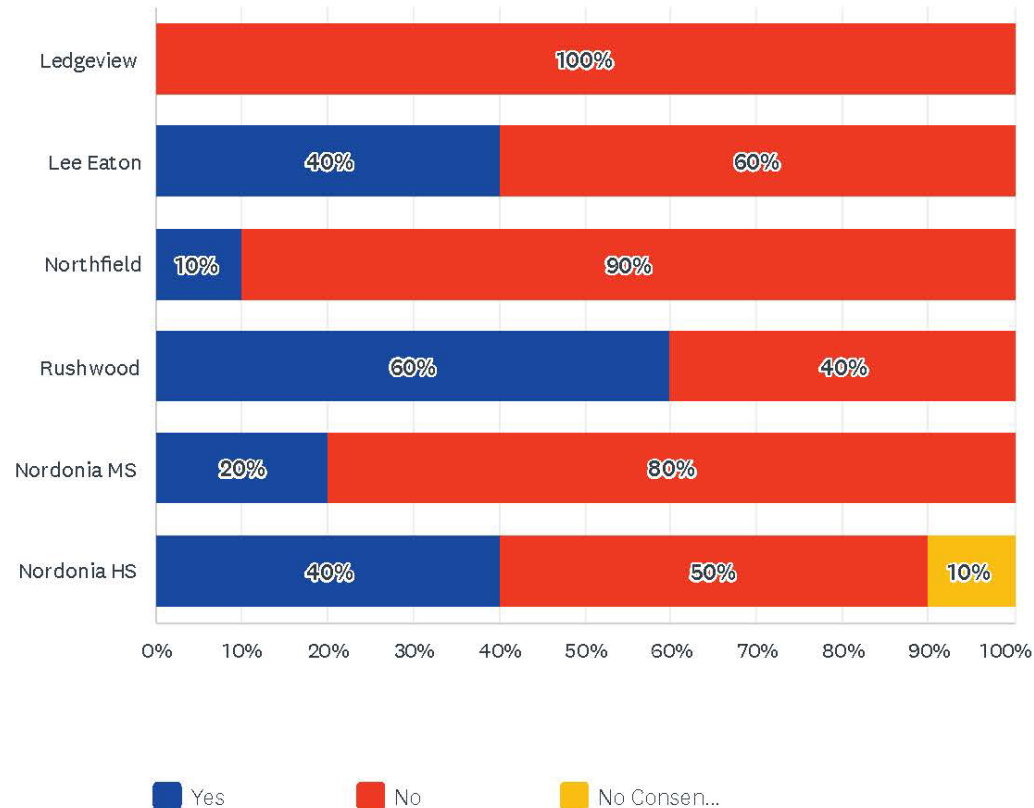


GROUP RESULTS



Q5 If it becomes necessary to reduce costs, should renovations and potential additions be considered at any of the facilities? (Example: Renovate early 2000's additions to facilities, and construct new core classroom spaces)

Answered: 10 Skipped: 0



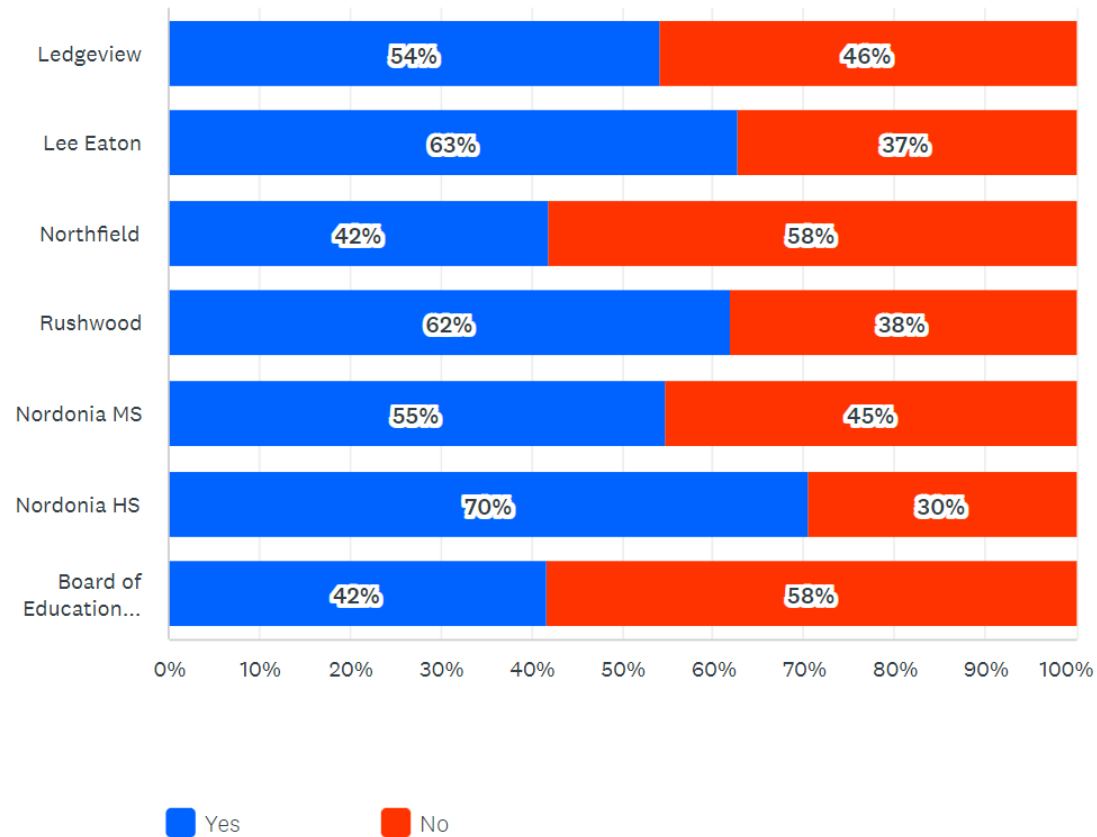


INDIVIDUAL RESULTS



If it becomes necessary to reduce costs, should renovations and potential additions be considered at any of the facilities? (Example: Renovate early 2000's additions to facilities, and construct new core classroom spaces)

Answered: 695 Skipped: 307



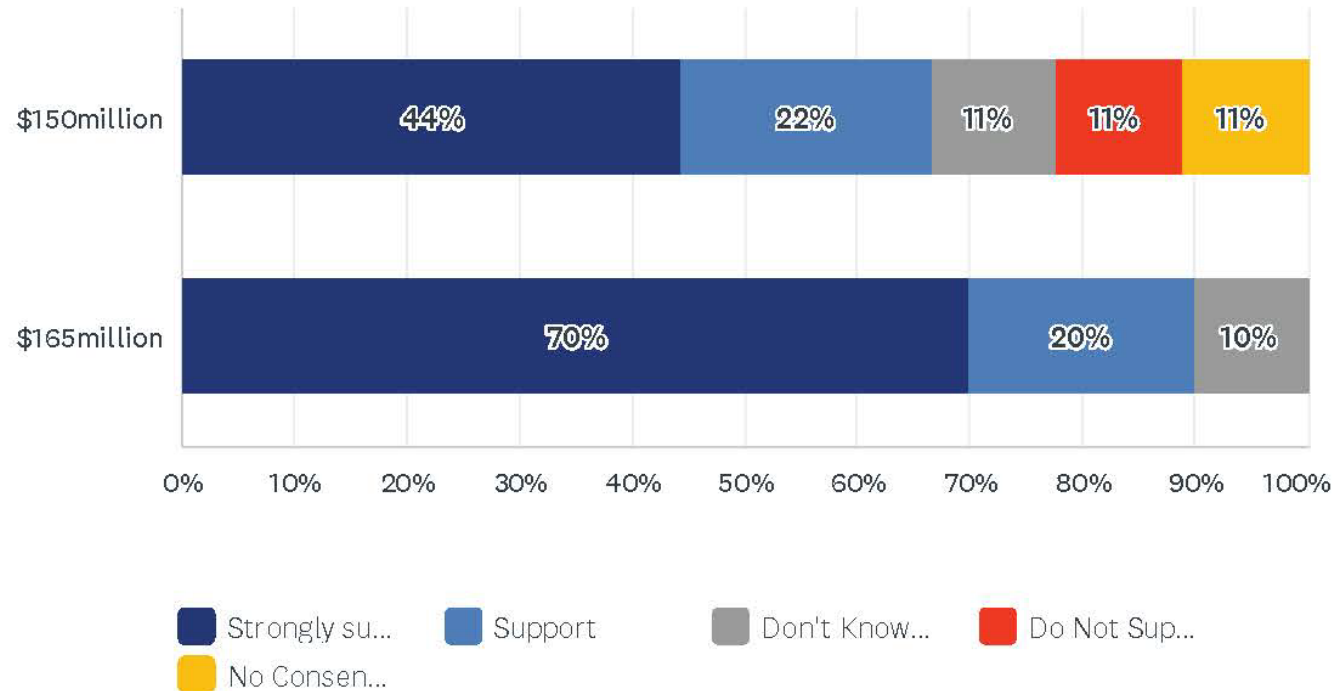


GROUP RESULTS



Q6 Would you be willing to support a bond issue between \$150million and \$165million to improve District facilities? Please rate these independently and keep in mind that increasing costs may require renovations instead of replacements as recommendations are developed.

Answered: 10 Skipped: 0



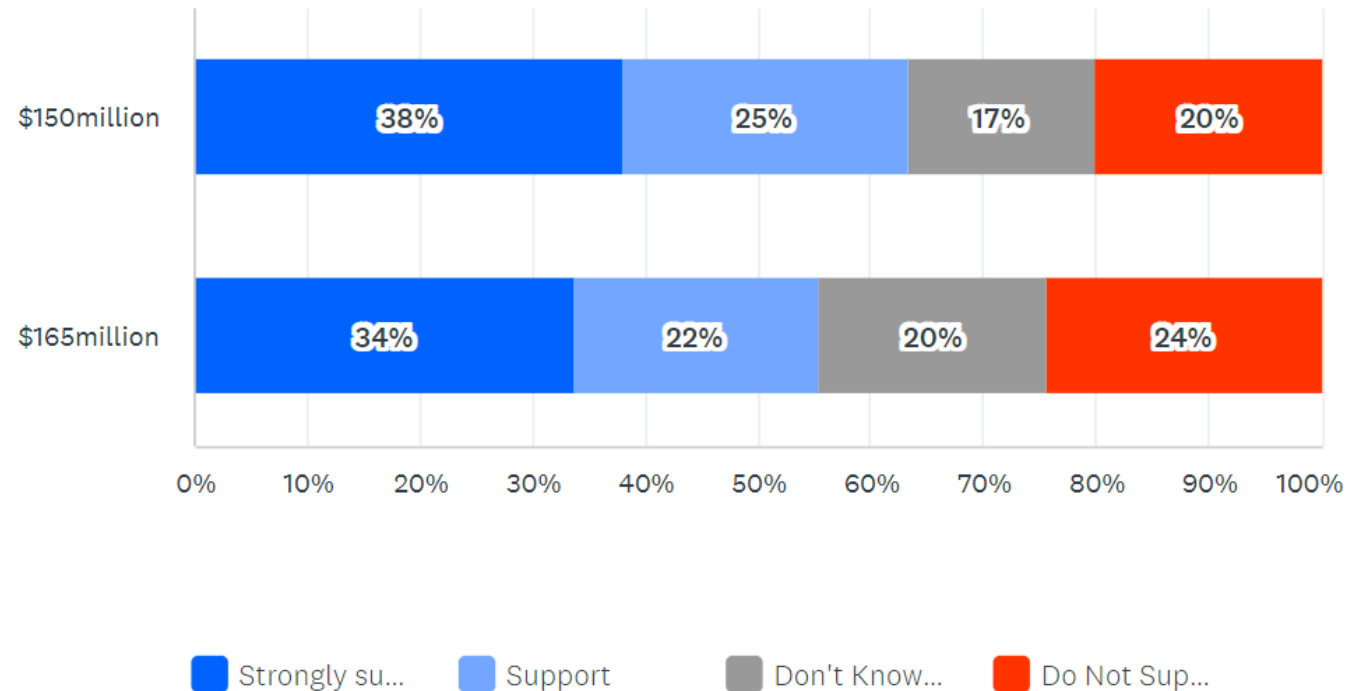


INDIVIDUAL RESULTS



Would you be willing to support a bond issue between \$150million and \$165million to improve District facilities? Please rate these independently and keep in mind that increasing costs may require renovations instead of replacements as recommendations are developed.

Answered: 716 Skipped: 286





OPTION 1: Results Analysis



9-12
1,093 students
\$67.3M



7-8
550 students
\$31.4M



4-6
710 students
\$33.2M



K-3
954 students
\$34.7M

Grade Config	Ledgeview	Northfield	Rushwood	Lee Eaton	Nordonia MS	Nordonia HS
K-2	2		1			
K-3	17	6	30	8	1	
K-4	2	2	4	2		
3-4		1	1			
4-6	4	8	11	35		
5-6	1			6		
5-8			2		4	
6-8					1	
7-8		1	1	8	48	1
4-5				1		
7-12						1
9-12					1	65

Majority: K-3 @ Rushwood, 4-6 @ Lee Eaton, 7-8 @ MS, 9-12 @ High School



OPTION 2: Results Analysis



9-12
1,093 students
\$67.3M



5-8
1,032 students
\$52.6M



K-4
591 students
\$23M



K-4
591 students
\$23M

Grade Config	Ledgeview	Northfield	Rushwood	Lee Eaton	Nordonia MS	Nordonia HS
K-3		1				
K-4	42	6	59	32	1	1
K-5		1	1			
4-6				1		
5-6				1		
5-8		1	3	15	51	
6-8					1	
7-8					2	
5-8, 9-12						1
9-12	1					71

Majority: K-4@ Ledgeview, K-4 @ Rushwood, 5-8 @ MS, 9-12 @ High School



OPTION 3: Results Analysis



9-12
1,093 students
\$67.3M



5-8
1,032 students
\$51.9M



K-4
1,182 students
\$42M

Grade Config	Ledgeview	Northfield	Rushwood	Lee Eaton	Nordonia MS	Nordonia HS
K-2			1			
K-3			1			
K-4	7	3	49	35	8	
K-5	1					
K-6			1			
K-4, 5-8			1			
3-4		1				
4-6				1		
5-6	1			1		
5-8	1	1	18	26	50	
6-8					1	
7-8					3	
7-12						1
9-12						98
5-8, 9-12						1
K-4, 5-8, 9-12						2

Majority: K-4 @ Rushwood, 5-8 @ MS, 9-12 @ High School



OPTION 4: Results Analysis



7-12

1643 students
\$94M



4-6

710 students
\$33.2M



K-3

954 students
\$34.5M

Grade Config	Ledgeview	Northfield	Rushwood	Lee Eaton	Nordonia MS	Nordonia HS
K-3	7	1	33	9	1	
K-4		1	1	1		
4-6	2	1	6	28	17	
5-6					1	
5-8					1	
7-12						51
7-8, 9-12						2
9-12						1

Majority: K-3 @ Rushwood, 4-6 @ MS, 7-12 @ High School



FINAL STEERING COMMITTEE MEETING: DRAFTING RECOMMENDATIONS



- **How much things cost**
- **The difference between capital and operating funds**
- **Where the MGM money is going**
- **What we can do without increasing the tax rate**
- **The condition of our schools**



RECOMMENDATIONS



- **Preferred Recommendation - Option 3 (\$158.5M)**
 - New K-4 @ Rushwood
 - New 5-8 @ Lee Eaton
 - New 9-12 @ High School
 - No new BOE Offices

- **Alternative Recommendation – Based on Recent Property Acquisition (Possibly less than \$158.5M)**
 - New HS on newly acquired property
 - New 5-8 on existing HS footprint (Reuse gyms and auditorium if possible)
 - New K-4 on Lee Eaton (More central than Rushwood)



FINAL RECOMMENDATIONS



9-12
1,093 students
\$67.3M

@ High School



5-8
1,032 students
\$46.7M

@ Lee Eaton



K-4
1,182 students
\$42M

@ Rushwood

OR



5-8
1,032 students
\$46.7M



9-12
1,093 students
\$67.3M

@ High School



K-4
1,182 students
\$42M

@ Lee Eaton



FINAL RECOMMENDATIONS



9-12
1,093 students
\$67.3M



5-8
1,032 students
\$46.7M



K-4
1,182 students
\$42M

Facility	Action	Grade Configuration	Proposed Enrollment	Square Footage	Capital Costs	10-Year Operational Savings
New K-4 @ TBD	New	K-4	1,182	127,263	\$42.0M	None
New 5-8 @ TBD	New	5-8	1,032	142,000	\$46.7M	None
Replacement 9-12	New	9-12	1,093	200,000	\$67.3M	None
Additional Demos					\$2.5M	\$21M
Total			3,307	469,263	\$158.5M	\$21M



PLAN B



So far, our construction costs of \$325 per foot are holding.

What do we do if costs escalate beyond the debt ceiling?

- Construct the new HS on newly acquired property
- Minor renovations at the existing HS to make suitable for grades 5-8
- New K-4 @ Lee Eaton (to gain operational savings)
- New 5-8 later when finances allow



FINAL STEERING COMMITTEE MEETING GOAL



Reach group consensus around a primary recommendation **AND** an alternative for the Board to consider.

Consensus Scale:

1. I support the recommendation.
2. I support the recommendation with hesitation.
3. I do not support the recommendation, but will do nothing to impede it.
4. I do not support the recommendation.

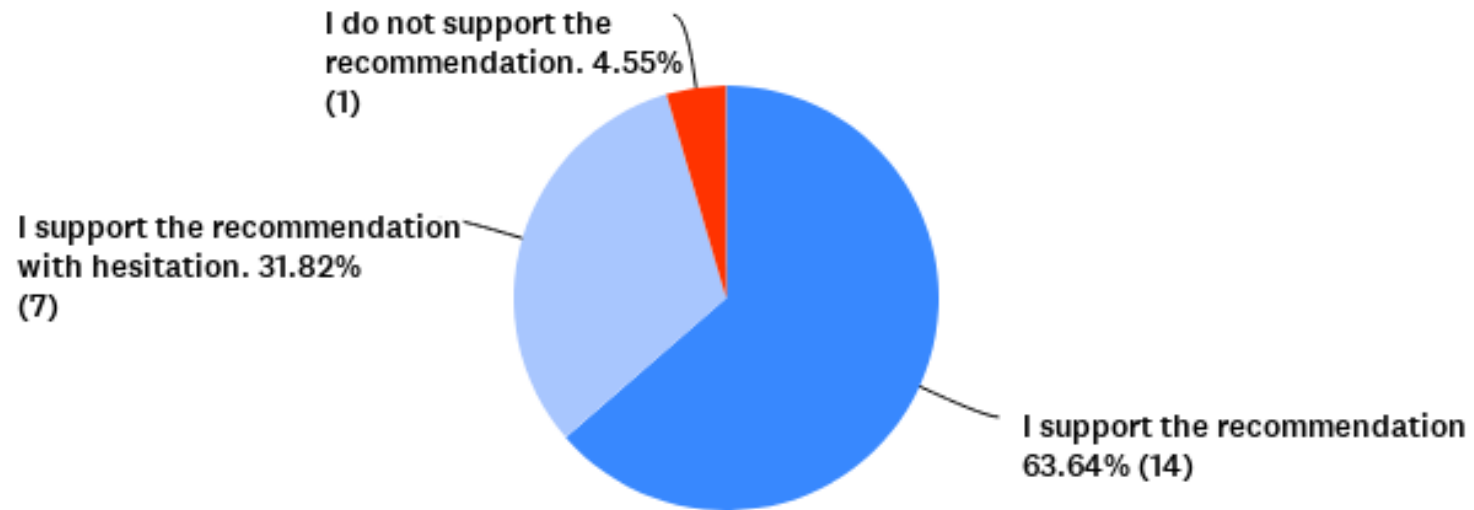




RESULTS OF COMMITTEE SURVEY



Q1 Please share you level of support regarding the recommendation to District Leadership.





THANK YOU!

