



**Murrieta Valley Unified School District**  
**Redistricting Advisory Committee #3**  
**November 18, 2024**

*To Inspire Every Student to Think, to Learn, to Achieve, to Care*



# Agenda

- 1 Project Timeline
- 2 Criteria Survey Results
- 3 Options Review & Comparison

# Project Timeline

# Project Timeline

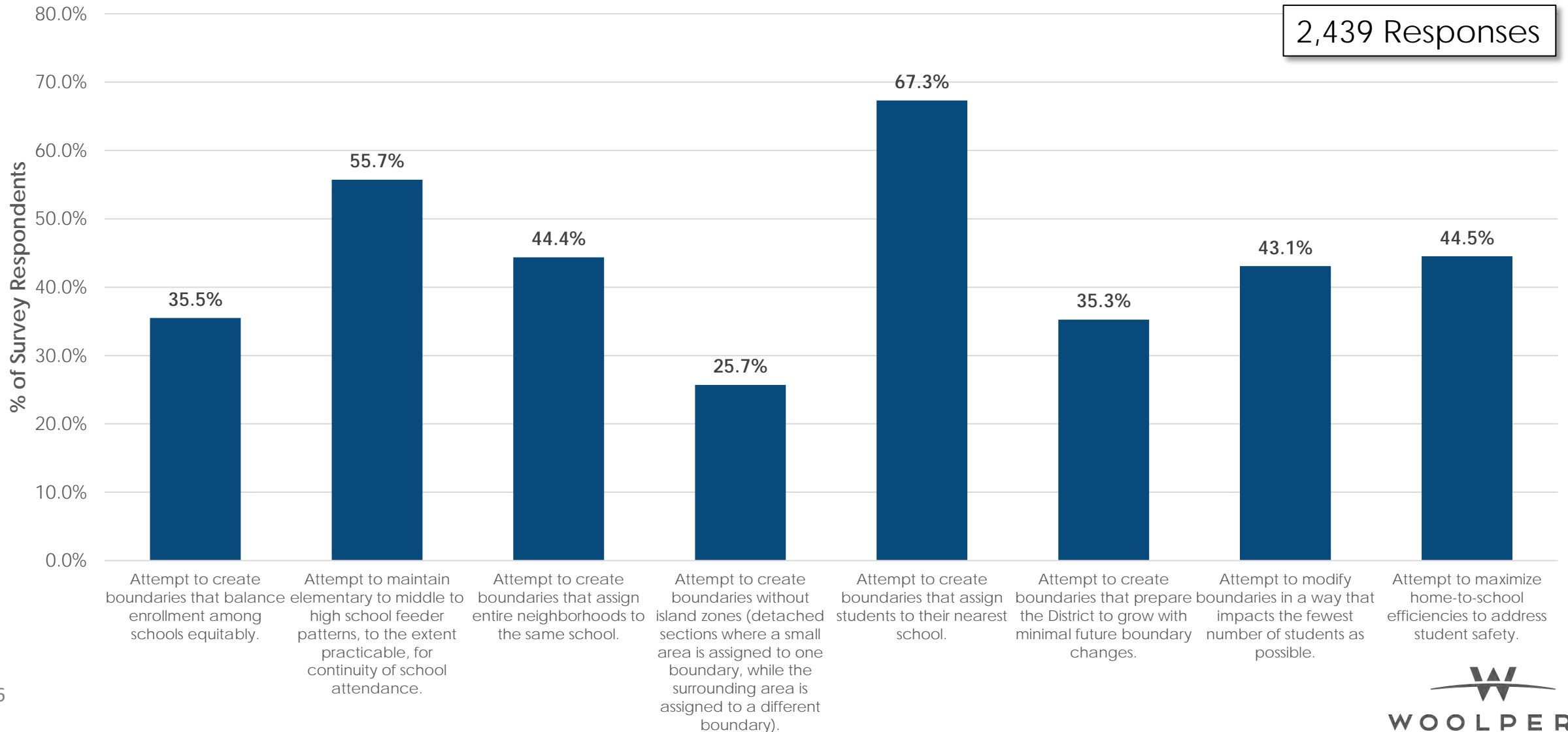
Date	Format	Event	Description
Monday, October 7, 2024	In person	<b>Committee #1</b>	Organizational meeting, background data
Week of October 14, 2024	Virtual	Internal Scenarios	Work session; develop initial scenarios to are with Redistricting Committee
Monday, October 21, 2024	Virtual	<b>Committee #2</b>	Review scenarios, receive input and feedback
Wednesday, October 30, 2024	Virtual	Committee Work Session	Develop boundary option with Redistricting COmmittee
Tuesday, November 5, 2024	In Person	Cabinet Meeting	Meet with MVUSD administration, staff, and school site principals to discuss current developed options
Week of November 11, 2024	Virtual	Internal scenarios	Work session: refine scenarios based on committee input
November 18, 2024	Virtual	<b>Committee #3</b>	Review refined scenarios, provide additional feedback, prepare for community dialogue
December 10-11, 2024	In person	Community Dialogue	Present refined scenarios to the public
January 13, 2025	In Person	<b>Committee #4</b>	Review community feedback, make adjustments for recommendation, date TBD
January 14, 2025	In Person	Internal Recommendation Review	Work session: Finalize recommendation
January 20, 2025	Virtual	Internal Board Prep	Post complete draft report to Board Agenda
January 23, 2025	In person	Board Meeting	Board first reading and discussion
February 3, 2025	Virtual	Final Board Prep	Post final report to Board Agenda
February 13, 2025	In Person	Board Meeting	Final Report for Board Action

# Criteria Survey Results

# Criteria Survey Results

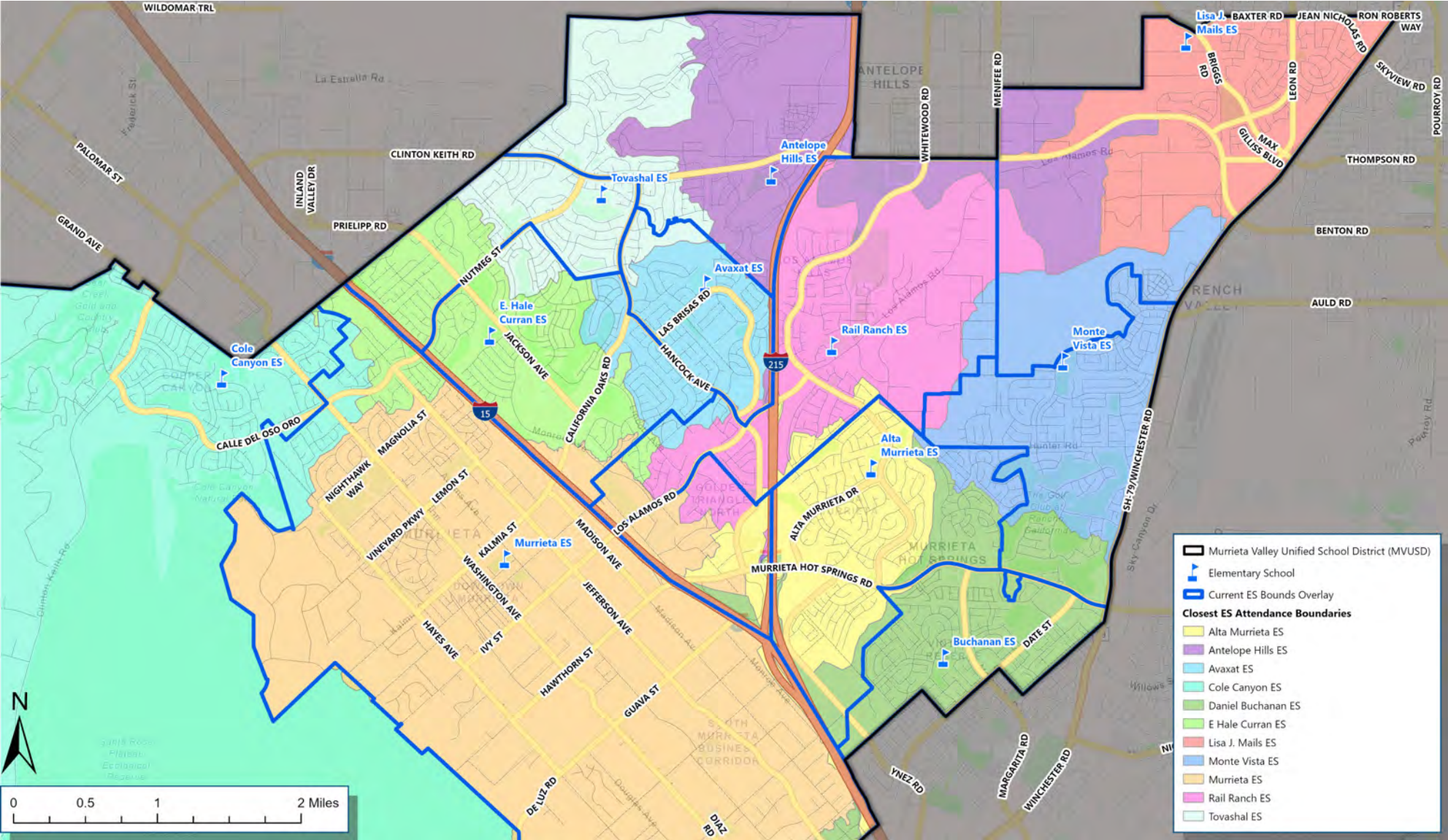
## Survey Question 1 – Pick your top 4 criteria

2,439 Responses





# Closest Elementary School Example

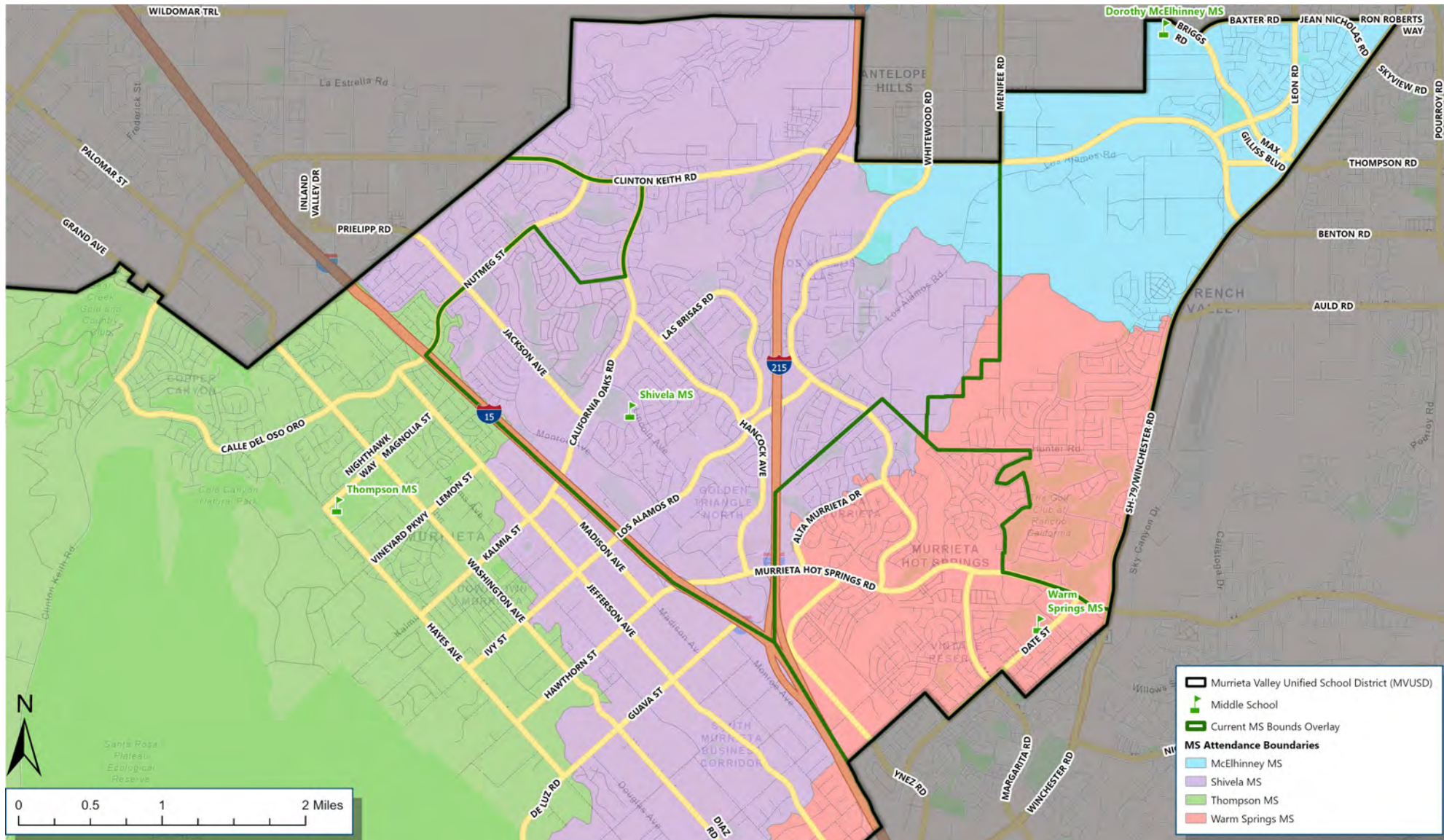


# Closest Elementary School Example

School	Facilities Capacity	2024/25 Actual Enrollment	2024/25 Utilization	2024/25 Closest ES Students	2024/25 Out of District Enrollment	2024/25 Total Enrollment	2024/25 Closest ES Utilization
Alta Murrieta ES	1,245	849	68%	731	68	799	64%
Antelope Hills ES	1,022	837	82%	477	125	602	59%
Avaxat ES	970	618	64%	646	46	692	71%
Cole Canyon ES	1,158	1,038	90%	929	82	1,011	87%
Daniel N. Buchanan ES	1,372	830	60%	882	58	940	69%
E. Hale Curran ES	889	575	65%	793	57	850	96%
Lisa J. Mails ES	1,067	1006	94%	602	249	851	80%
Monte Vista ES	1,142	769	67%	776	56	832	73%
Murrieta ES	1,030	894	87%	835	70	905	88%
Rail Ranch ES	922	603	65%	624	33	657	71%
Tovashal ES	913	745	82%	590	73	663	73%
Learn@Home TK-8	N/A	40	N/A	N/A	6	6	N/A
Learn@Home Virtual	N/A	4	N/A	N/A	0	0	N/A
<b>Total</b>	<b>11,730</b>	<b>8,808</b>	<b>75%</b>	<b>7,885</b>	<b>923</b>	<b>8,808</b>	<b>75%</b>



# Closest Middle School Example







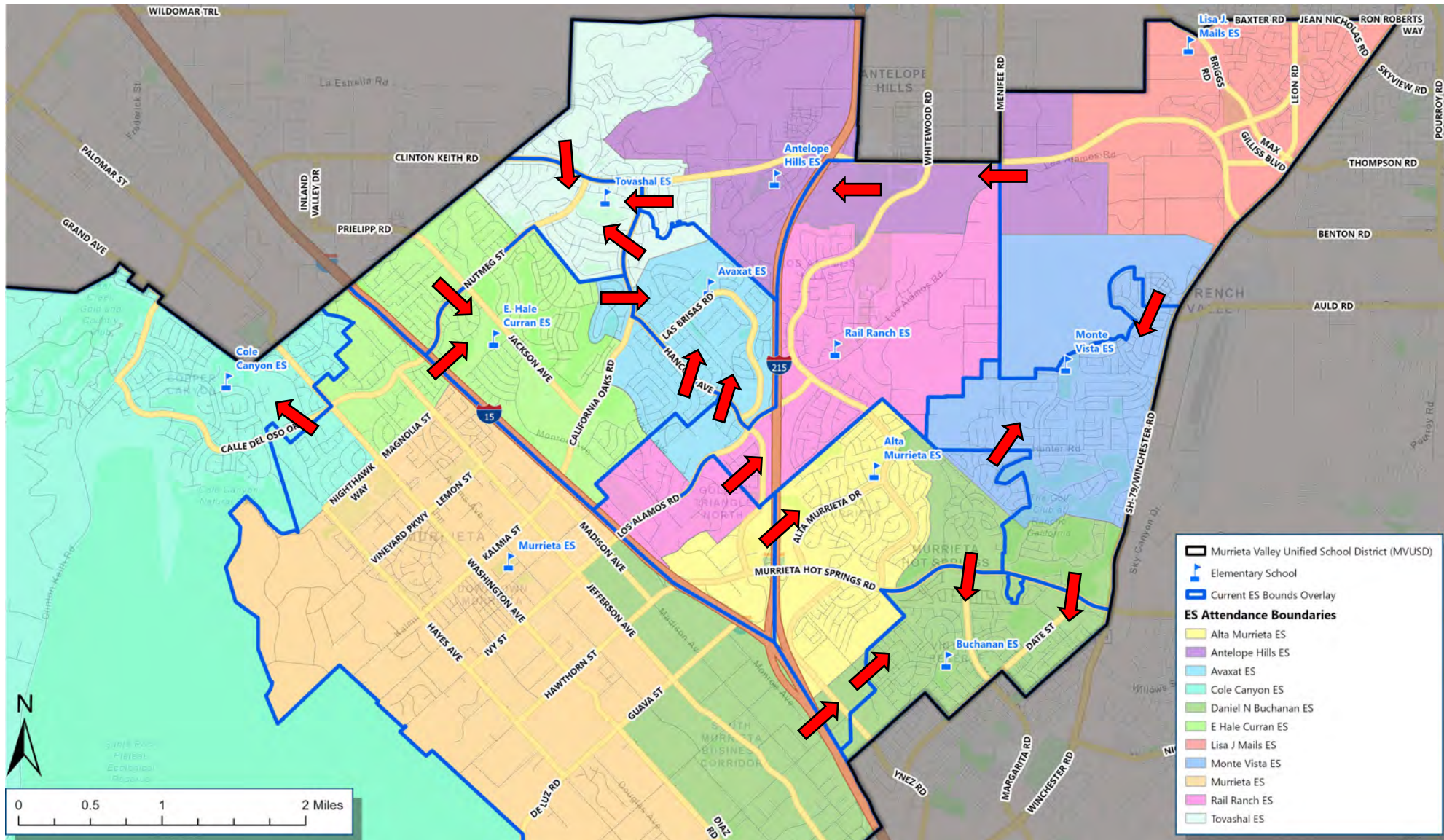
# Closest Middle & High School Example

School	Facilities Capacity	2024/25 Actual Enrollment	2024/25 Utilization	2024/25 Closest ES Students	2024/25 Out of District Enrollment	2024/25 Total Enrollment	2024/25 Closest ES Utilization
Dorothy McElhinney MS	1,824	1,451	80%	446	359	805	44%
Shivela MS	1,592	1,282	81%	1,972	110	2,082	131%
Thompson MS	1,794	1,564	87%	977	129	1,106	62%
Warm Springs MS	1,478	755	51%	1,071	48	1,119	76%
Learn@Home TK-8	N/A	69	N/A	N/A	11	11	N/A
Murrieta Canyon Academy	N/A	2	N/A	N/A	0	0	N/A
<b>MS Total</b>	<b>6,688</b>	<b>5,123</b>	<b>77%</b>	<b>4,466</b>	<b>657</b>	<b>5,123</b>	<b>77%</b>
Murrieta Mesa HS	2,273	2,068	91%	2,936	346	3,282	144%
Murrieta Valley HS	2,919	2,107	72%	1,465	274	1,739	60%
Vista Murrieta HS	3,302	3,335	101%	2,019	636	2,655	80%
Murrieta Canyon Academy	N/A	193	N/A	N/A	27	27	N/A
<b>HS Total</b>	<b>8,494</b>	<b>7,703</b>	<b>91%</b>	<b>6,420</b>	<b>1,283</b>	<b>7,703</b>	<b>91%</b>

# Conceptual Option 1

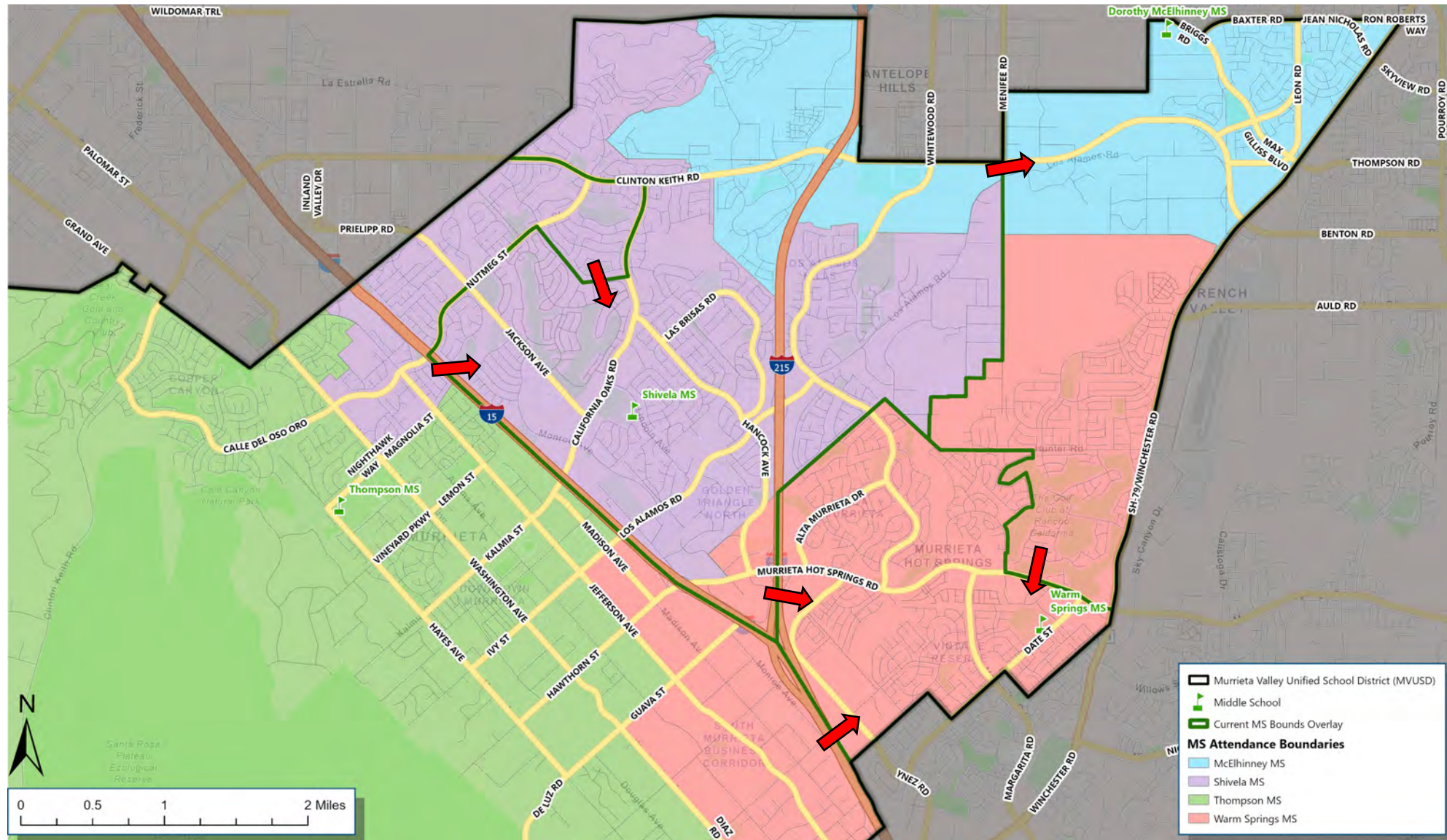


# Conceptual Elementary School Attendance Boundaries



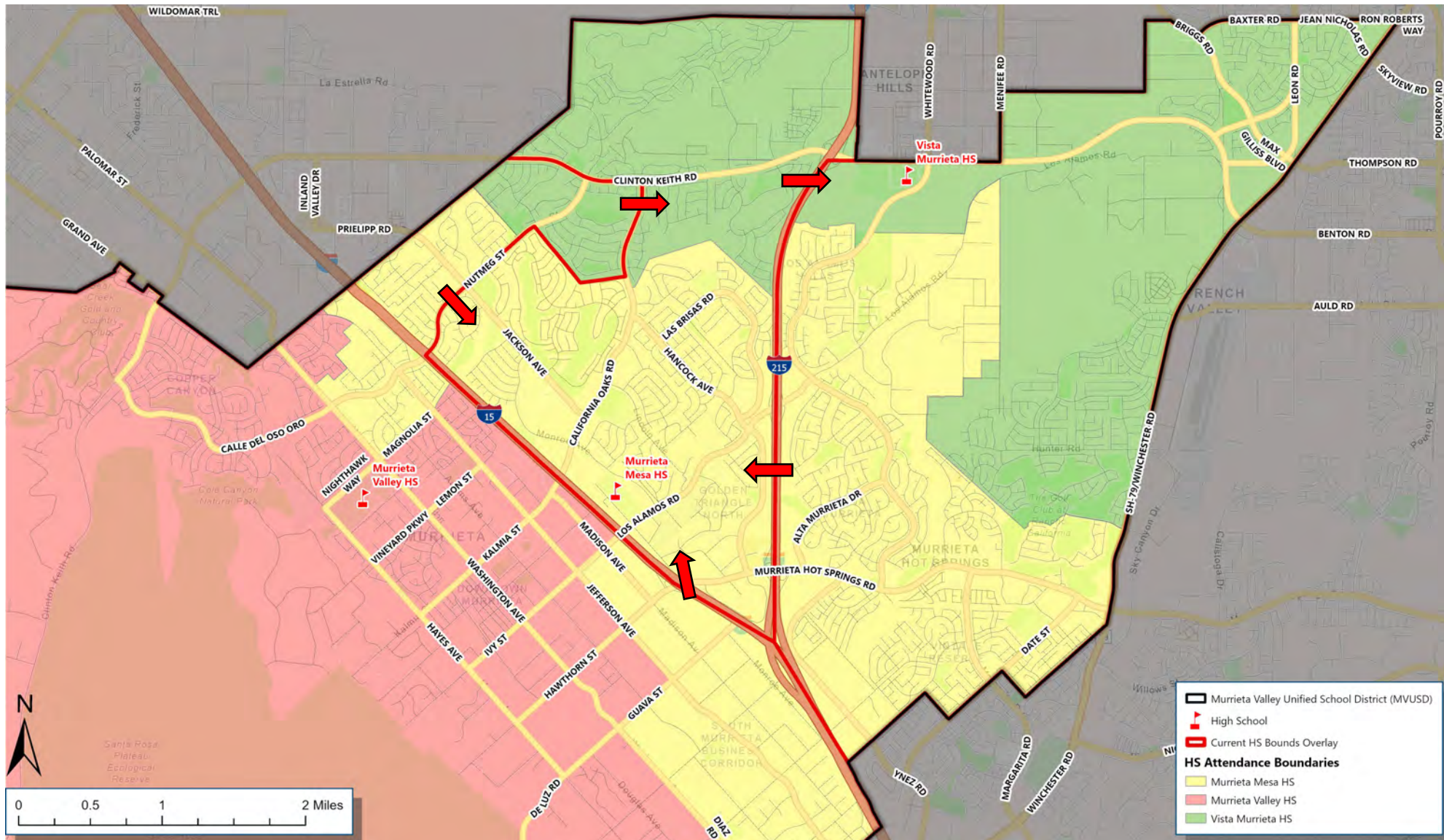


# Conceptual Middle School Attendance Boundaries





# Conceptual High School Attendance Boundaries

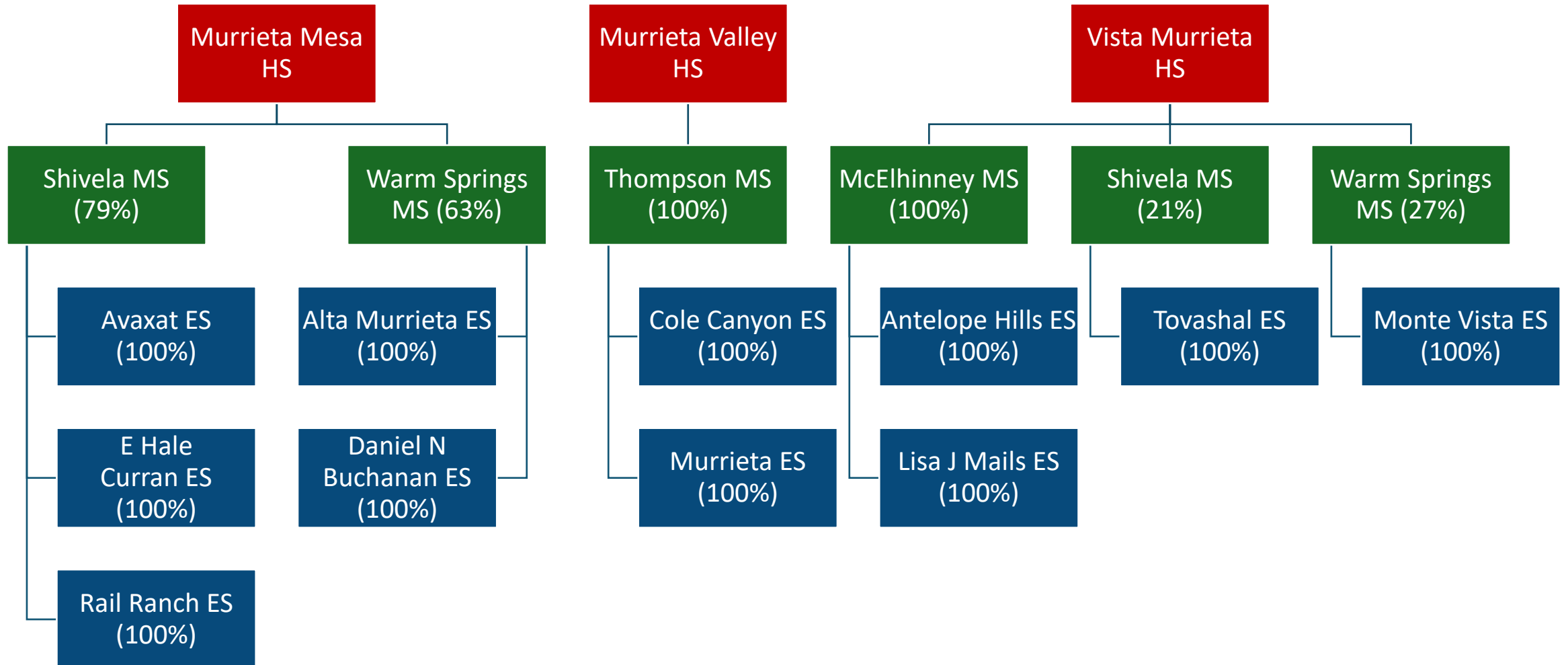


# Conceptual Projected Enrollment

School Boundary	Program Capacity	24/25 Enrollment	24/25 Utilization	25/26 Enrollment	25/26 Utilization	29/30 Enrollment	29/30 Utilization	34/35 Enrollment	34/35 Utilization
Alta Murrieta ES	1,245	849	68%	857	69%	1,010	81%	1,043	84%
Antelope Hills ES	1,022	837	82%	689	67%	710	69%	731	72%
Avaxat ES	970	618	64%	620	64%	614	63%	632	65%
Cole Canyon ES	1,158	1,038	90%	1,076	93%	1,049	91%	1,095	95%
Daniel N Buchanan ES	1,372	830	60%	984	72%	1,193	87%	1,238	90%
E Hale Curran ES	889	575	65%	815	92%	806	91%	830	93%
Lisa J Mails ES	1,067	1,006	94%	951	89%	930	87%	952	89%
Monte Vista ES	1,142	769	67%	706	62%	645	56%	661	58%
Murrieta ES	1,030	894	87%	805	78%	1,025	99%	1,227	119%
Rail Ranch ES	922	603	65%	663	72%	693	75%	719	78%
Tovashal ES	913	745	82%	764	84%	747	82%	769	84%
Learn@Home TK-8	N/A	40	N/A	39	N/A	42	N/A	44	N/A
Murrieta Canyon Academy	N/A	4	N/A	4	N/A	4	N/A	5	N/A
Dorothy McElhinney MS	1,824	1,451	80%	1,246	68%	1,214	67%	1,153	63%
Shivela MS	1,592	1,282	81%	1,396	88%	1,277	80%	1,222	77%
Thompson MS	1,794	1,564	87%	1,164	65%	1,218	68%	1,317	73%
Warm Springs MS	1,478	755	51%	1,220	83%	1,300	88%	1,165	79%
Learn@Home TK-8	N/A	69	N/A	77	N/A	78	N/A	73	N/A
Murrieta Canyon Academy	N/A	2	N/A	2	N/A	2	N/A	2	N/A
Murrieta Mesa HS	2,273	2,068	91%	2,989	131%	3,100	136%	2,736	120%
Murrieta Valley HS	2,919	2,107	72%	1,723	59%	1,785	61%	1,838	63%
Vista Murrieta HS	3,302	3,335	101%	2,845	86%	2,768	84%	2,436	74%
Murrieta Canyon Academy	N/A	193	N/A	193	N/A	197	N/A	180	N/A

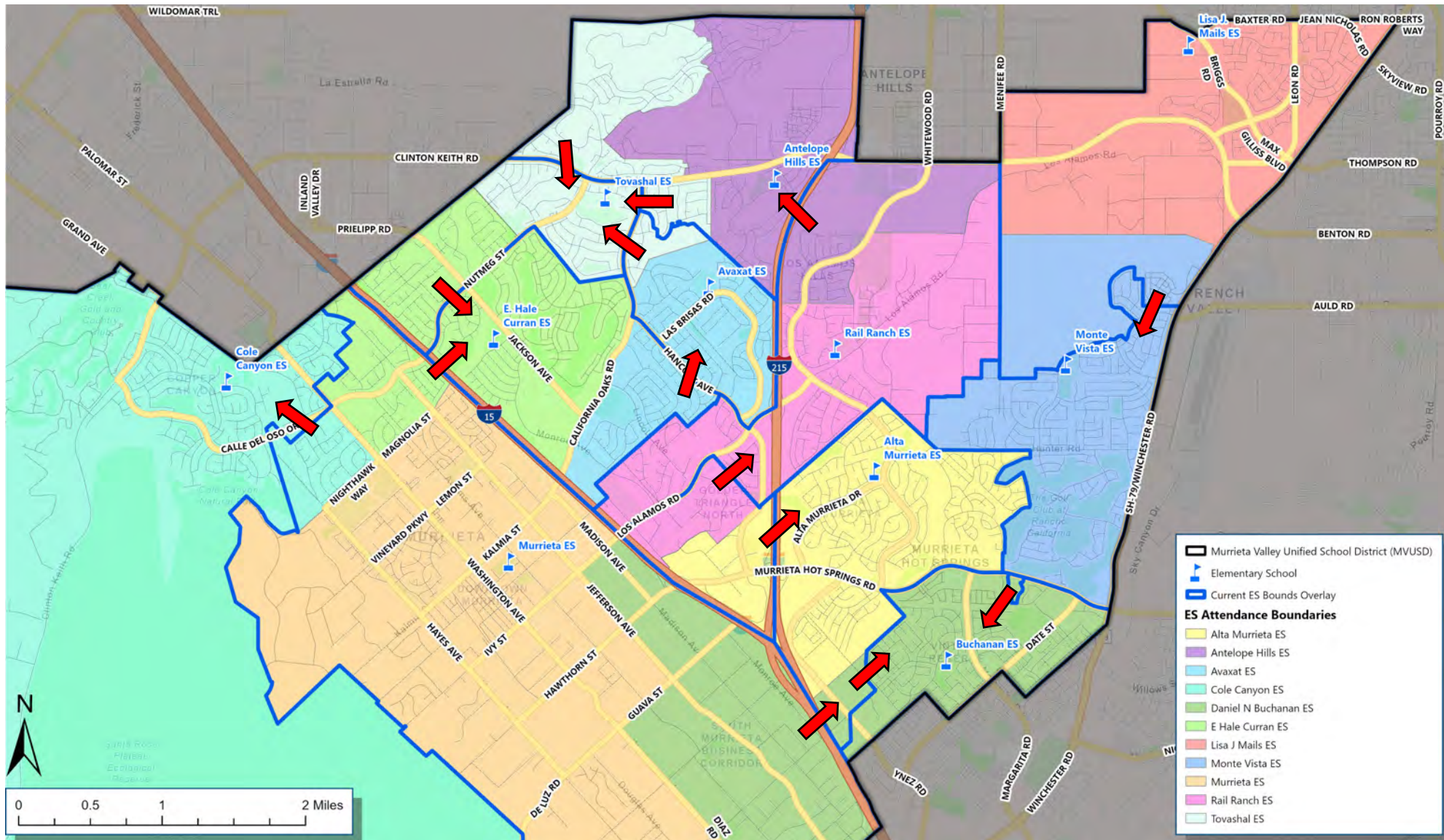


# Conceptual Feeder Patterns



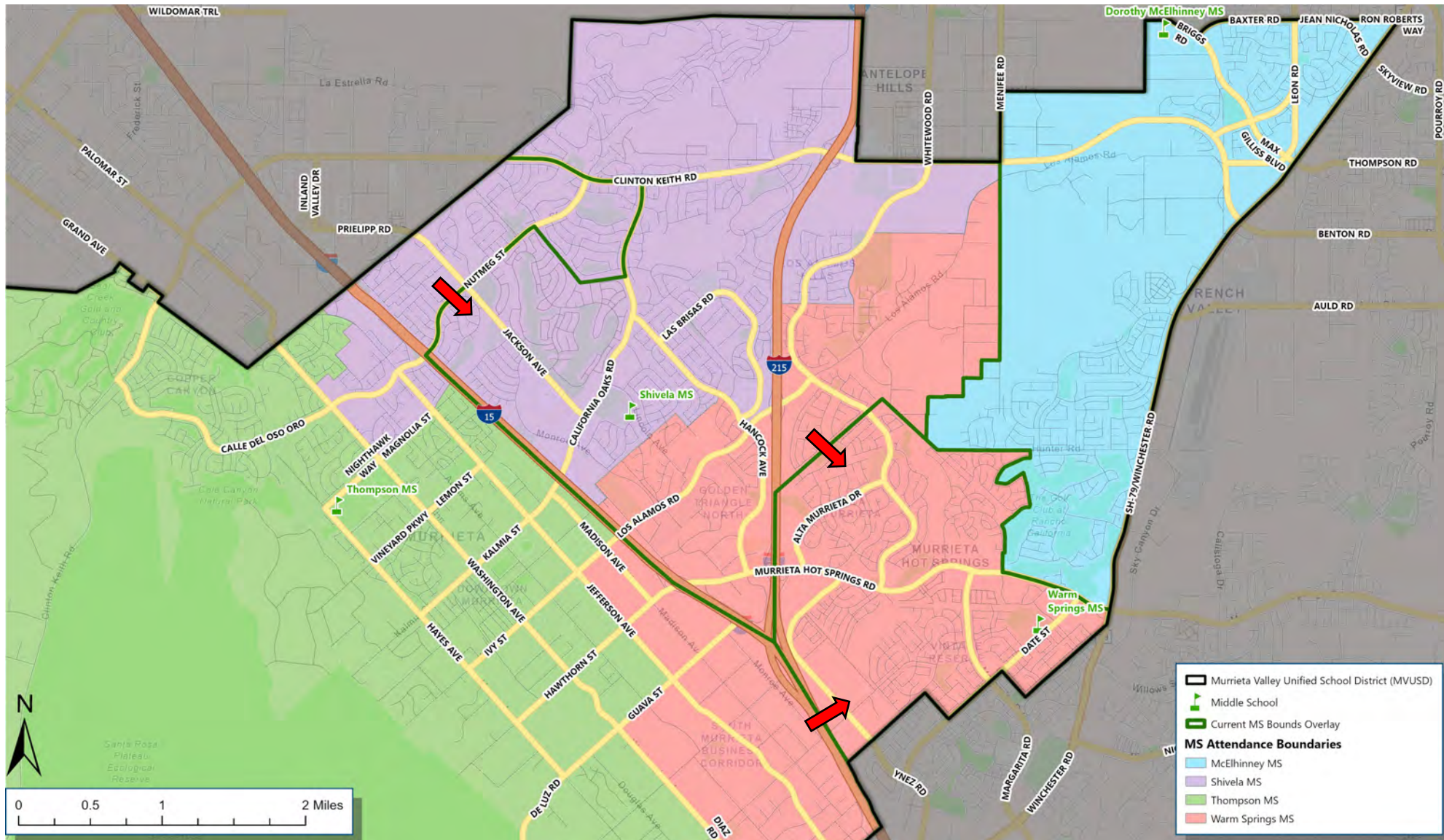
# Conceptual Option 2

# Conceptual Elementary School Attendance Boundaries



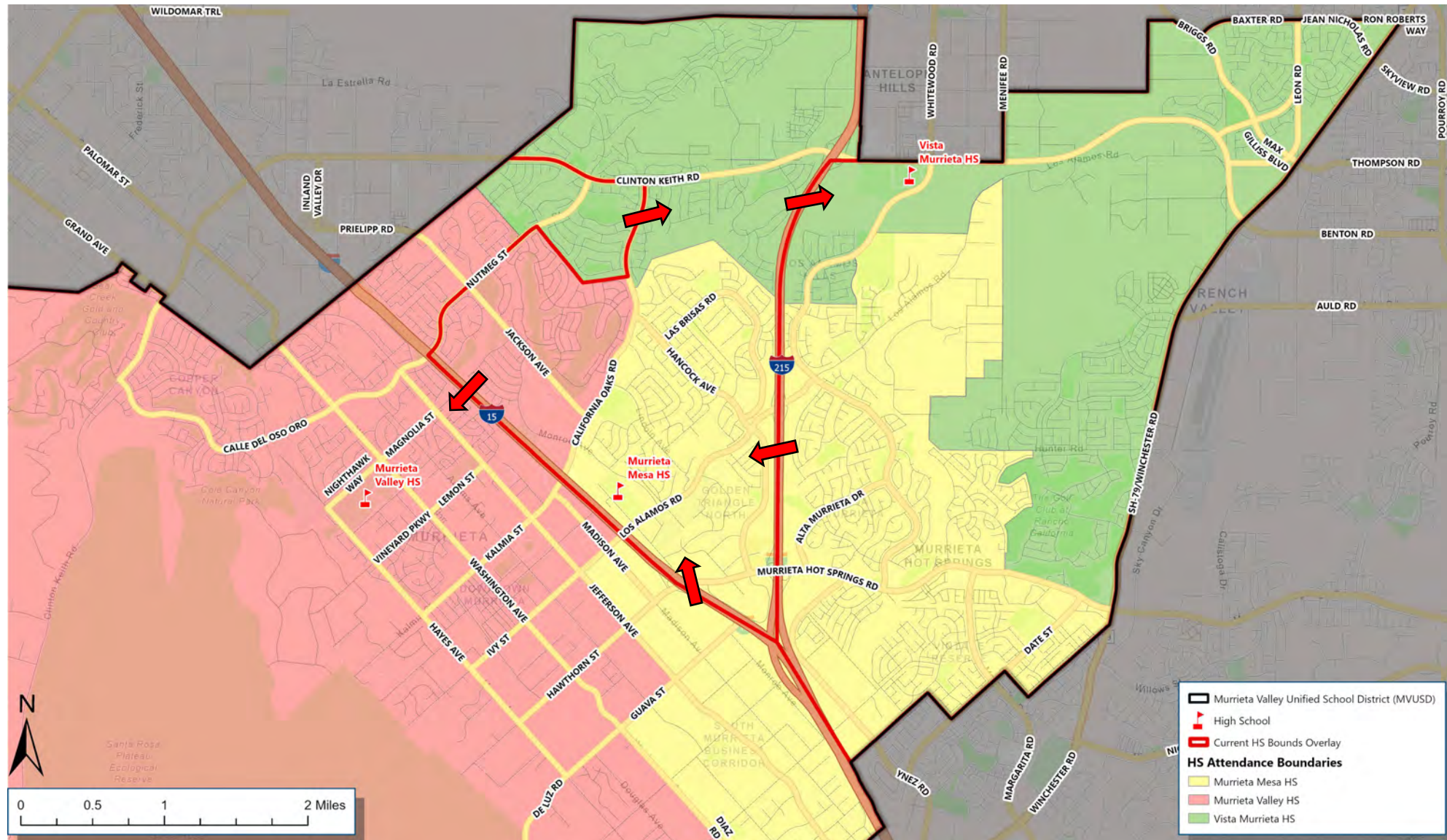


# Conceptual Middle School Attendance Boundaries





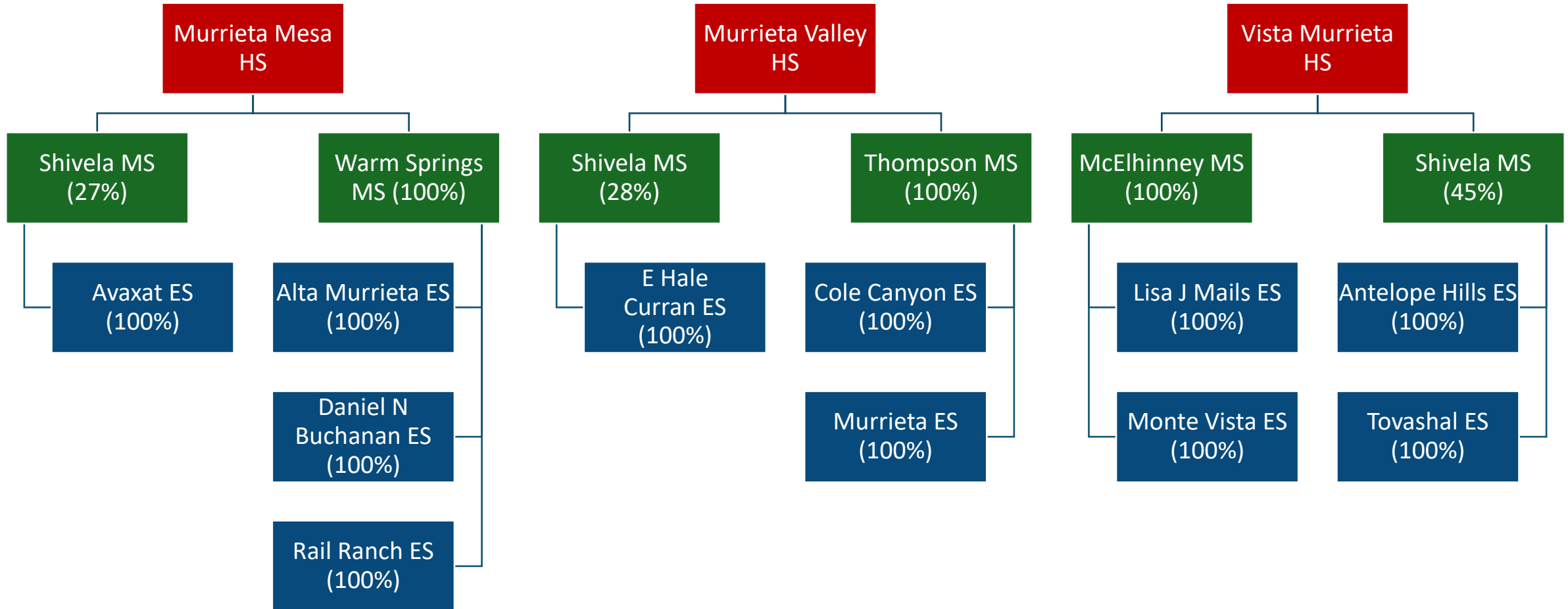
# Conceptual High School Attendance Boundaries



# Conceptual Projected Enrollment

School Boundary	Program Capacity	24/25 Enrollment	24/25 Utilization	25/26 Enrollment	25/26 Utilization	29/30 Enrollment	29/30 Utilization	34/35 Enrollment	34/35 Utilization
Alta Murrieta ES	1,245	849	68%	863	69%	1,012	81%	1,046	84%
Antelope Hills ES	1,022	837	82%	820	80%	808	79%	831	81%
Avaxat ES	970	618	64%	656	68%	640	66%	659	68%
Cole Canyon ES	1,158	1,038	90%	1,075	93%	1,048	91%	1,094	94%
Daniel N Buchanan ES	1,372	830	60%	875	64%	1,109	81%	1,151	84%
E Hale Curran ES	889	575	65%	753	85%	756	85%	778	88%
Lisa J Mails ES	1,067	1,006	94%	962	90%	941	88%	964	90%
Monte Vista ES	1,142	769	67%	795	70%	717	63%	735	64%
Murrieta ES	1,030	894	87%	804	78%	1,024	99%	1,226	119%
Rail Ranch ES	922	603	65%	554	60%	614	67%	638	69%
Tovashal ES	913	745	82%	773	85%	753	82%	775	85%
Learn@Home TK-8	N/A	40	N/A	39	N/A	41	N/A	44	N/A
Murrieta Canyon Academy	N/A	4	N/A	4	N/A	4	N/A	5	N/A
Dorothy McElhinney MS	1,824	1,451	80%	1,456	80%	1,359	75%	1,235	68%
Shivela MS	1,592	1,282	81%	1,341	84%	1,231	77%	1,174	74%
Thompson MS	1,794	1,564	87%	1,158	65%	1,214	68%	1,313	73%
Warm Springs MS	1,478	755	51%	1,073	73%	1,208	82%	1,136	77%
Learn@Home TK-8	N/A	69	N/A	74	N/A	76	N/A	73	N/A
Murrieta Canyon Academy	N/A	2	N/A	2	N/A	2	N/A	2	N/A
Murrieta Mesa HS	2,273	2,068	91%	2,416	106%	2,549	112%	2,278	100%
Murrieta Valley HS	2,919	2,107	72%	2,191	75%	2,242	77%	2,236	77%
Vista Murrieta HS	3,302	3,335	101%	2,947	89%	2,860	87%	2,493	76%
Murrieta Canyon Academy	N/A	193	N/A	195	N/A	199	N/A	182	N/A

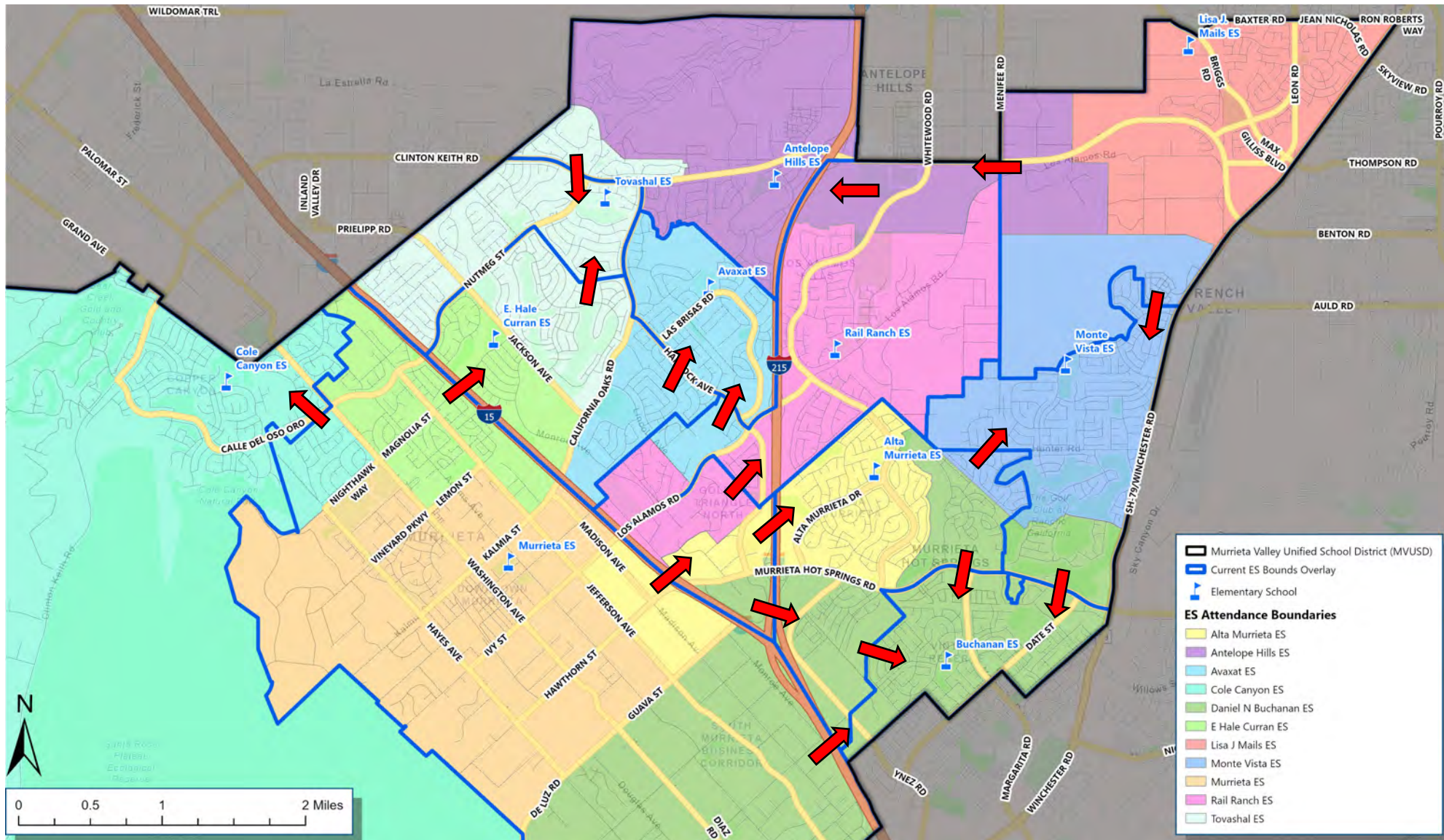
# Conceptual Feeder Patterns



# Committee Option 1

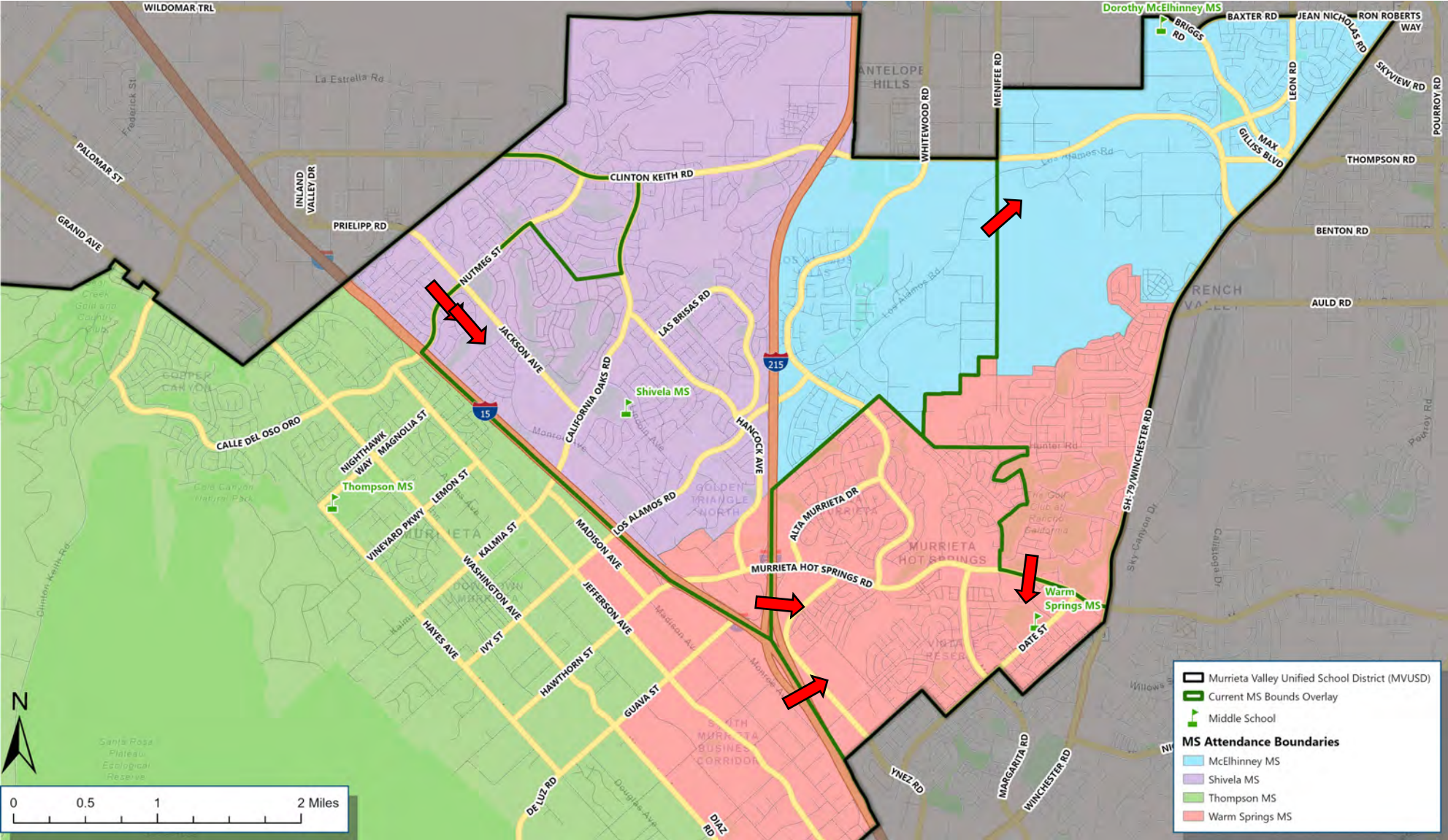


# Elementary School Attendance Boundaries



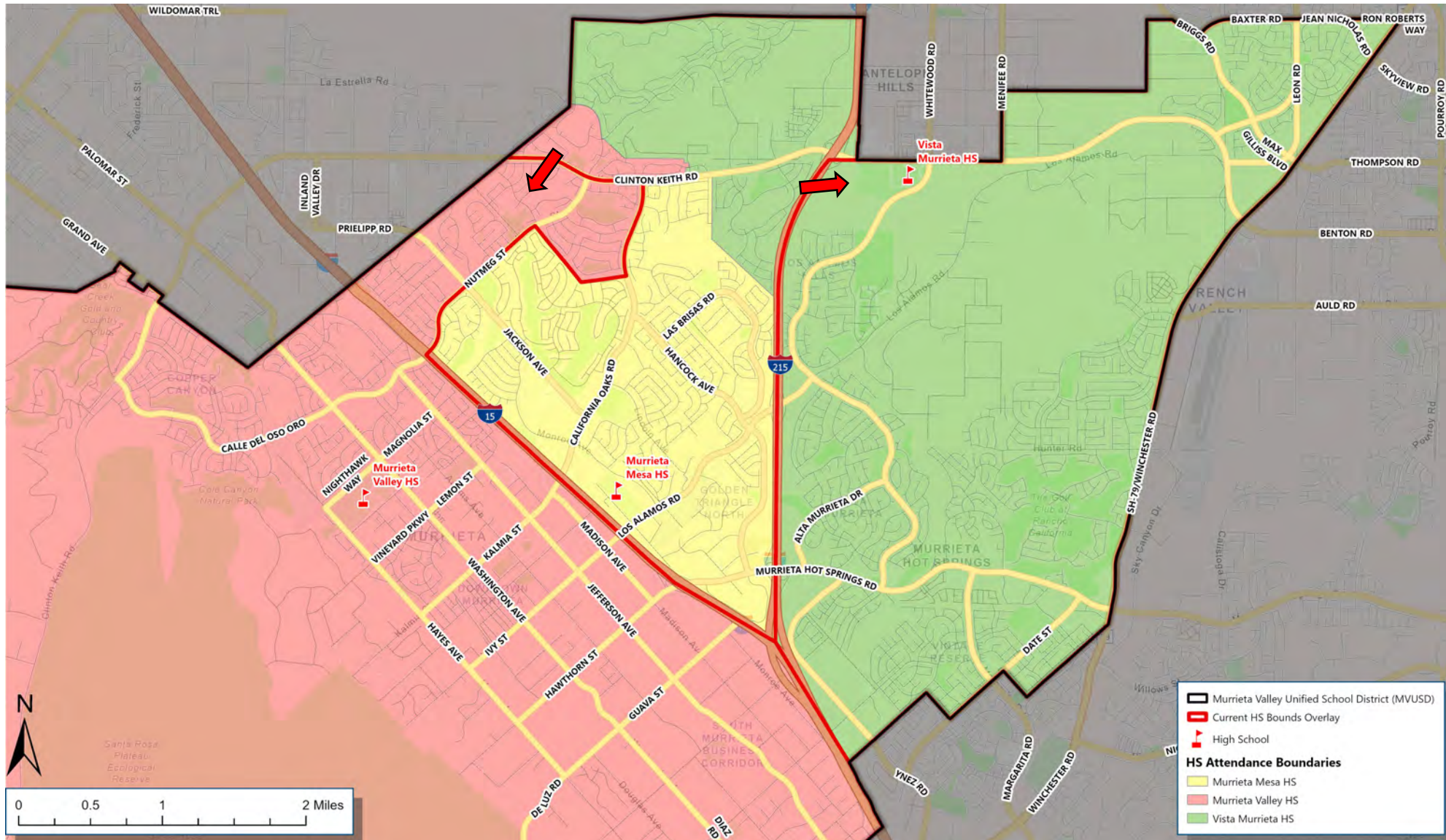


# Middle School Attendance Boundaries





# High School Attendance Boundaries

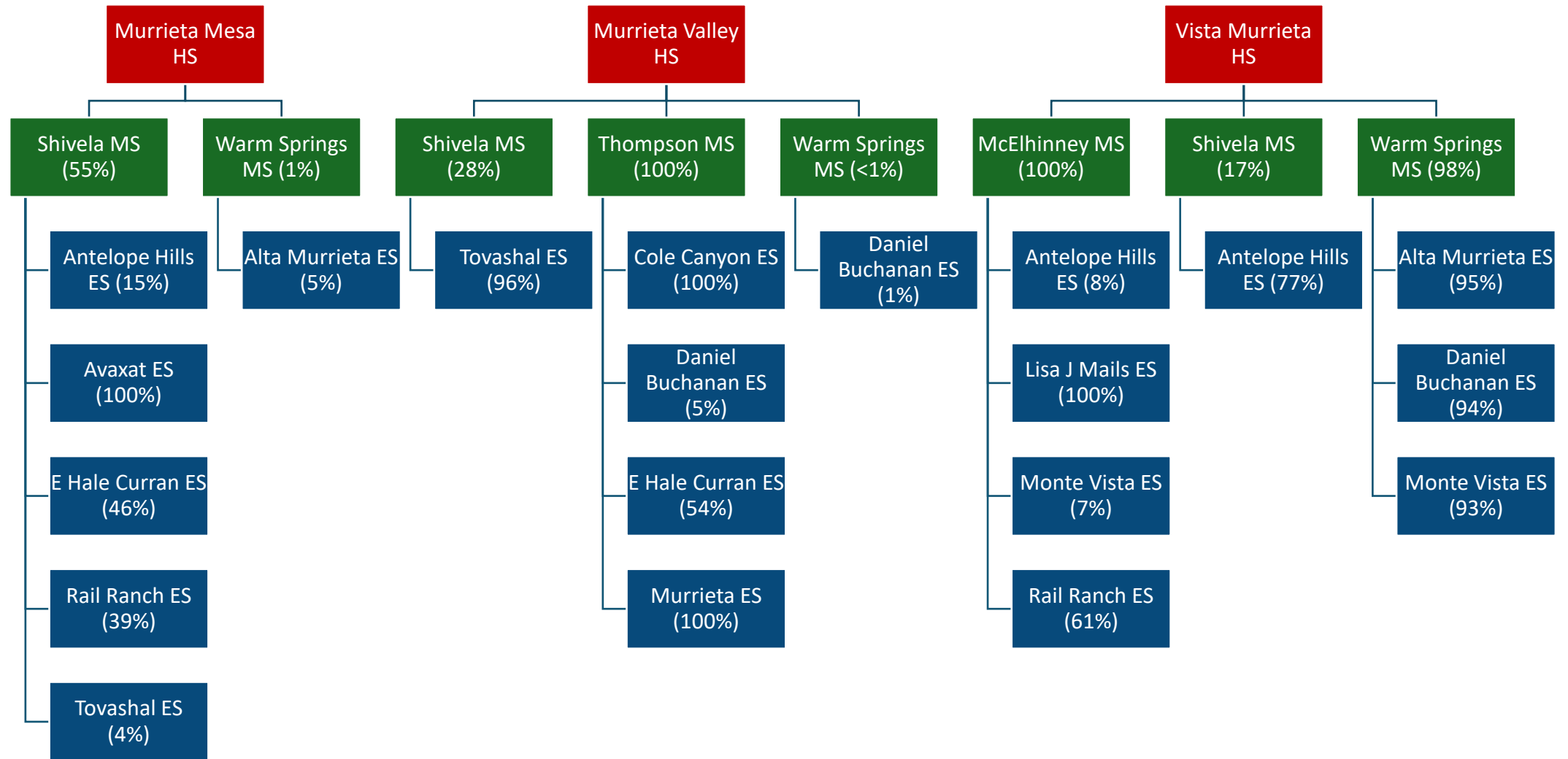


# Projected Enrollment

School Boundary	Program Capacity	24/25 Enrollment	24/25 Utilization	25/26 Enrollment	25/26 Utilization	29/30 Enrollment	29/30 Utilization	34/35 Enrollment	34/35 Utilization
Alta Murrieta ES	1,245	849	68%	700	56%	1,100	88%	1,151	92%
Antelope Hills ES	1,022	837	82%	849	83%	878	86%	904	88%
Avaxat ES	970	618	64%	698	72%	692	71%	712	73%
Cole Canyon ES	1,158	1,038	90%	1,048	90%	1,015	88%	1,060	92%
Daniel N Buchanan ES	1,372	830	60%	1,186	86%	1,146	84%	1,175	86%
E Hale Curran ES	889	575	65%	700	79%	760	85%	783	88%
Lisa J Mails ES	1,067	1,006	94%	956	90%	933	87%	955	89%
Monte Vista ES	1,142	769	67%	706	62%	646	57%	662	58%
Murrieta ES	1,030	894	87%	553	54%	704	68%	897	87%
Rail Ranch ES	922	603	65%	666	72%	695	75%	722	78%
Tovashal ES	913	745	82%	869	95%	854	93%	878	96%
Learn@Home TK-8	N/A	40	N/A	37	N/A	42	N/A	44	N/A
Murrieta Canyon Academy	N/A	4	N/A	3	N/A	4	N/A	4	N/A
Dorothy McElhinney MS	1,824	1,451	80%	1,304	71%	1,253	69%	1,177	65%
Shivela MS	1,592	1,282	81%	1,309	82%	1,204	76%	1,168	73%
Thompson MS	1,794	1,564	87%	1,232	69%	1,295	72%	1,385	77%
Warm Springs MS	1,478	755	51%	1,181	80%	1,259	85%	1,129	76%
Learn@Home TK-8	N/A	69	N/A	76	N/A	77	N/A	73	N/A
Murrieta Canyon Academy	N/A	2	N/A	2	N/A	2	N/A	2	N/A
Murrieta Mesa HS	2,273	2,068	91%	1,736	76%	1,894	83%	1,704	75%
Murrieta Valley HS	2,919	2,107	72%	2,200	75%	2,380	82%	2,395	82%
Vista Murrieta HS	3,302	3,335	101%	3,620	110%	3,378	102%	2,910	88%
Murrieta Canyon Academy	N/A	193	N/A	193	N/A	198	N/A	181	N/A

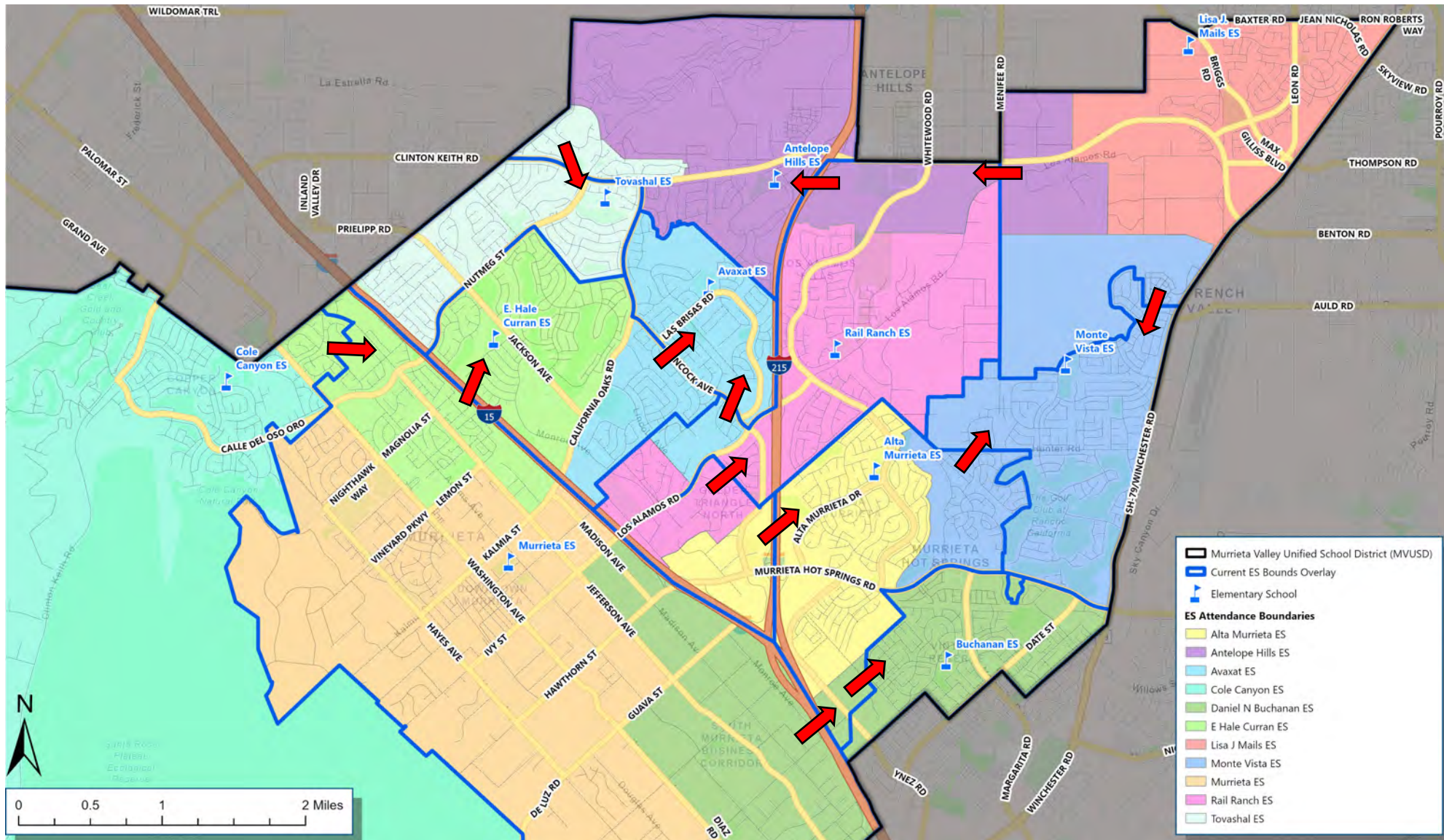


# Conceptual Feeder Patterns



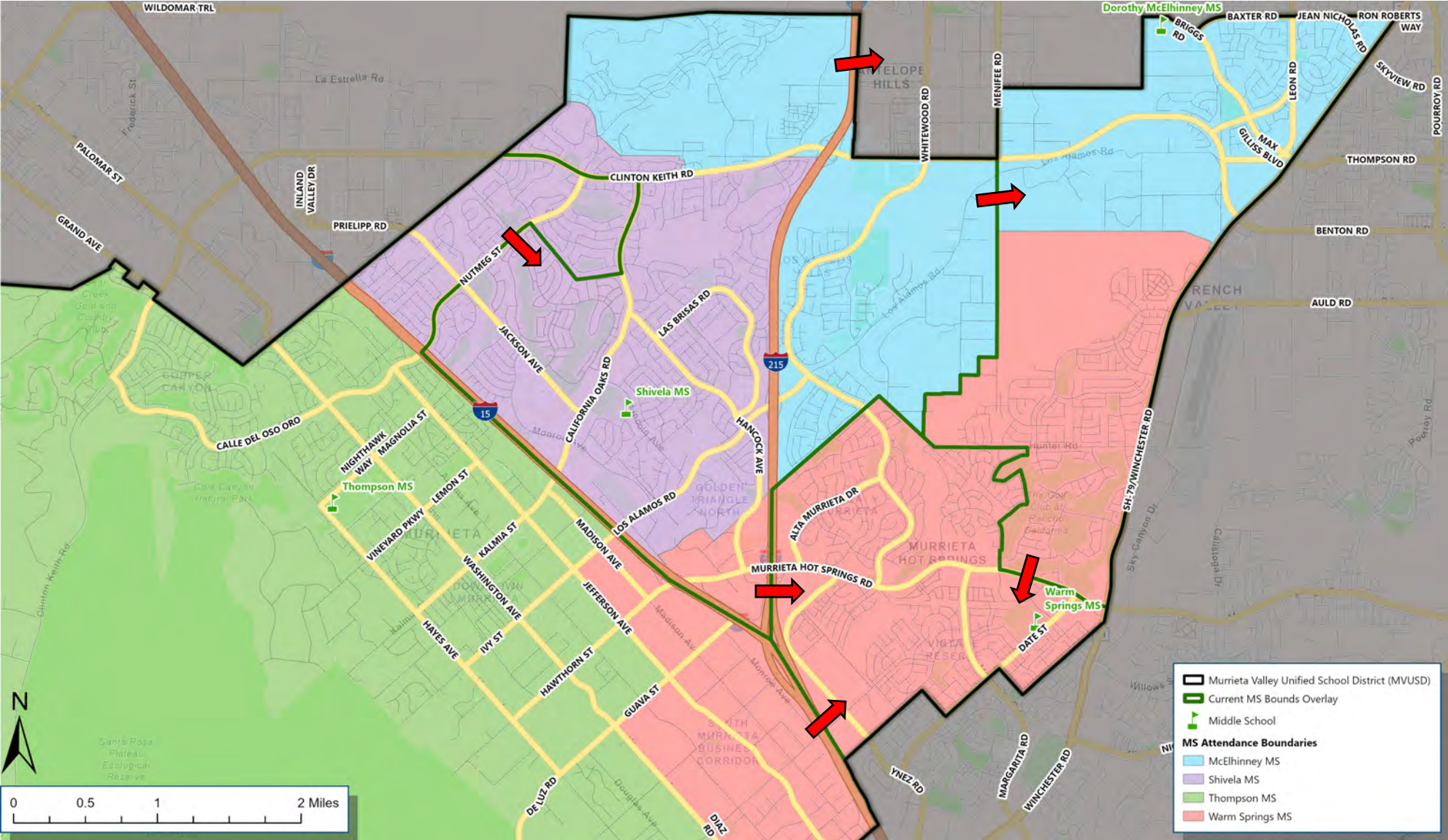
# Internal Option 1

# Elementary School Attendance Boundaries



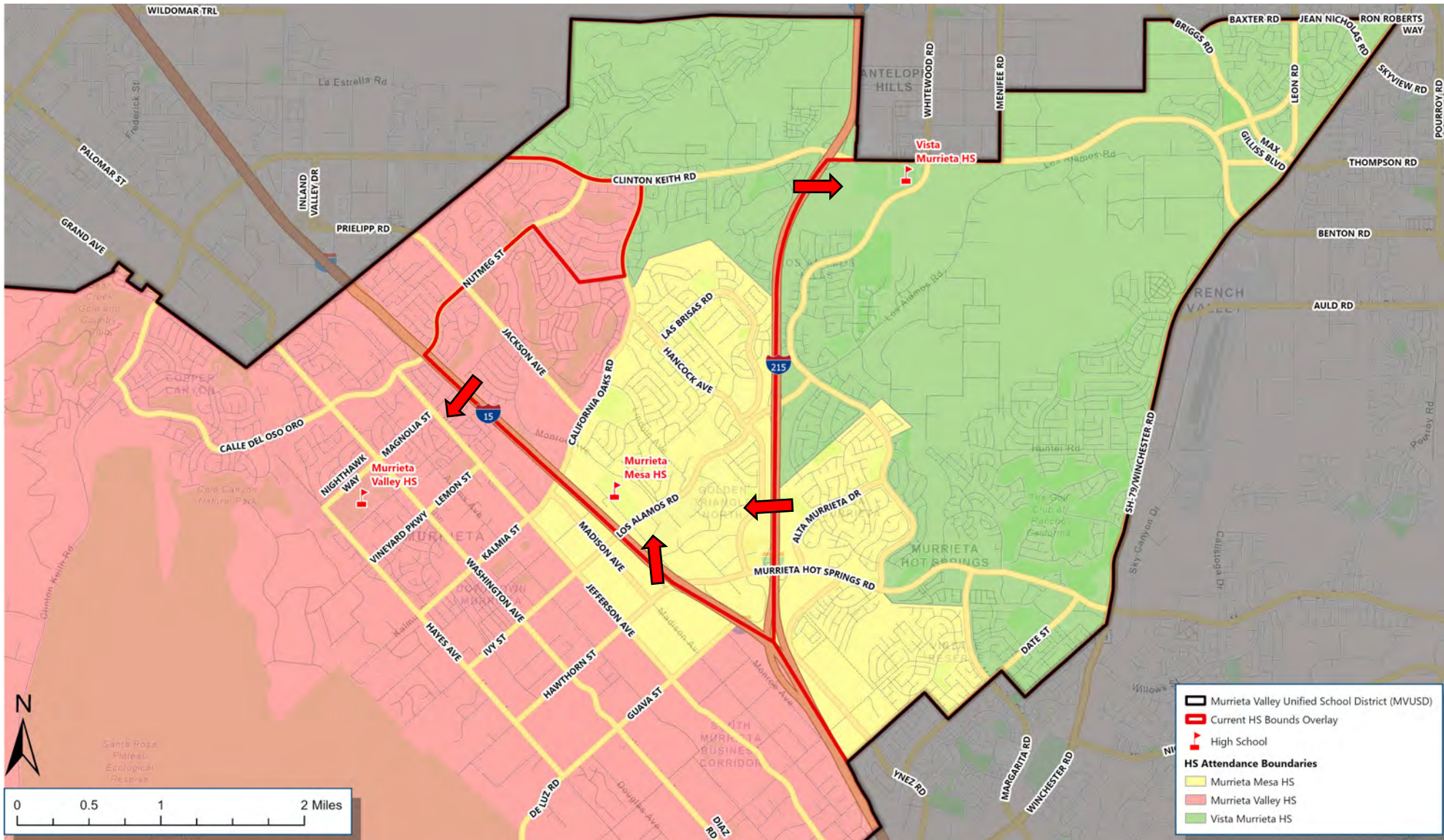


# Middle School Attendance Boundaries





# High School Attendance Boundaries

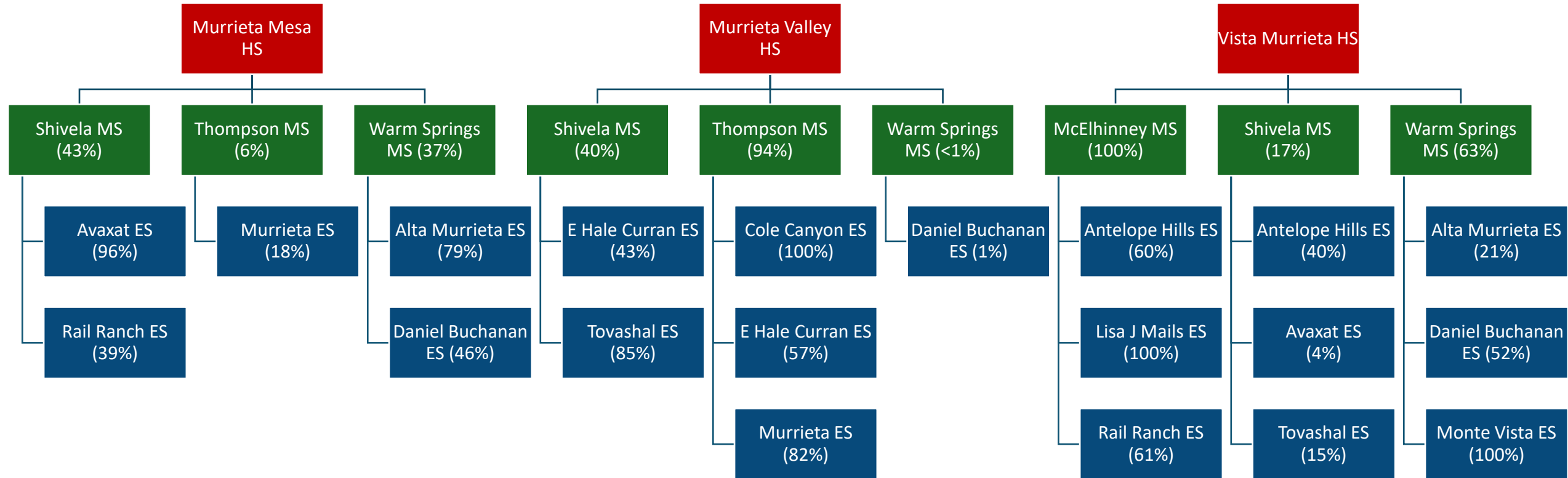


# Projected Enrollment

School Boundary	Program Capacity	24/25 Enrollment	24/25 Utilization	25/26 Enrollment	25/26 Utilization	29/30 Enrollment	29/30 Utilization	34/35 Enrollment	34/35 Utilization
Alta Murrieta ES	1,245	849	68%	862	69%	1,015	82%	1,049	84%
Antelope Hills ES	1,022	837	82%	851	83%	880	86%	906	89%
Avaxat ES	970	618	64%	704	73%	697	72%	717	74%
Cole Canyon ES	1,158	1,038	90%	912	79%	914	79%	956	83%
Daniel N Buchanan ES	1,372	830	60%	876	64%	1,110	81%	1,153	84%
E Hale Curran ES	889	575	65%	796	90%	847	95%	872	98%
Lisa J Mails ES	1,067	1,006	94%	962	90%	940	88%	962	90%
Monte Vista ES	1,142	769	67%	807	71%	725	63%	743	65%
Murrieta ES	1,030	894	87%	644	63%	774	75%	969	94%
Rail Ranch ES	922	603	65%	665	72%	695	75%	722	78%
Tovashal ES	913	745	82%	848	93%	824	90%	847	93%
Learn@Home TK-8	N/A	40	N/A	40	N/A	42	N/A	44	N/A
Murrieta Canyon Academy	N/A	4	N/A	3	N/A	4	N/A	4	N/A
Dorothy McElhinney MS	1,824	1,451	80%	1,395	76%	1,347	74%	1,251	69%
Shivela MS	1,592	1,282	81%	1,189	75%	1,079	68%	1,066	67%
Thompson MS	1,794	1,564	87%	1,225	68%	1,287	72%	1,379	77%
Warm Springs MS	1,478	755	51%	1,216	82%	1,297	88%	1,163	79%
Learn@Home TK-8	N/A	69	N/A	77	N/A	78	N/A	73	N/A
Murrieta Canyon Academy	N/A	2	N/A	2	N/A	2	N/A	2	N/A
Murrieta Mesa HS	2,273	2,068	91%	2,024	89%	2,184	96%	1,975	87%
Murrieta Valley HS	2,919	2,107	72%	2,296	79%	2,359	81%	2,314	79%
Vista Murrieta HS	3,302	3,335	101%	3,235	98%	3,108	94%	2,719	82%
Murrieta Canyon Academy	N/A	193	N/A	195	N/A	199	N/A	181	N/A

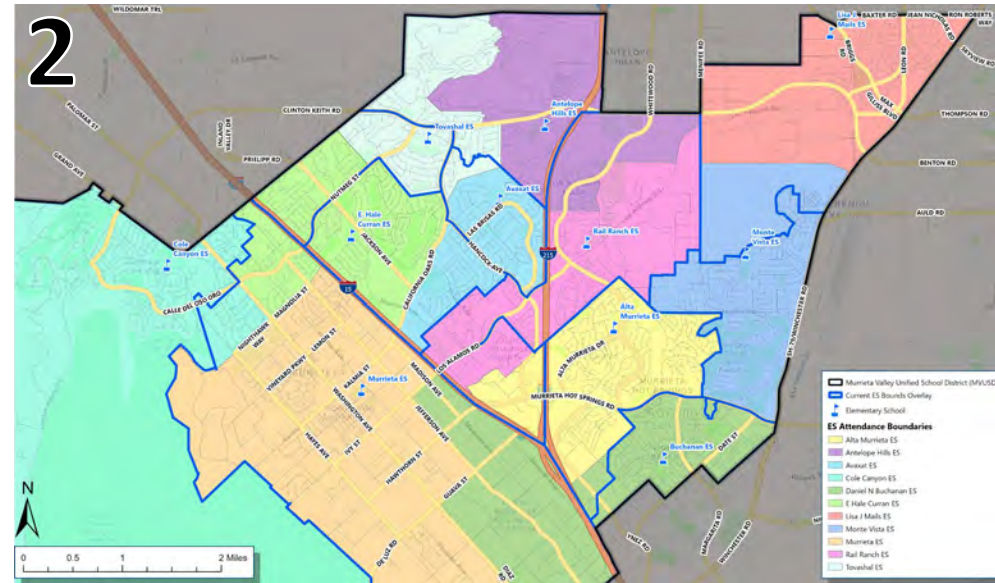
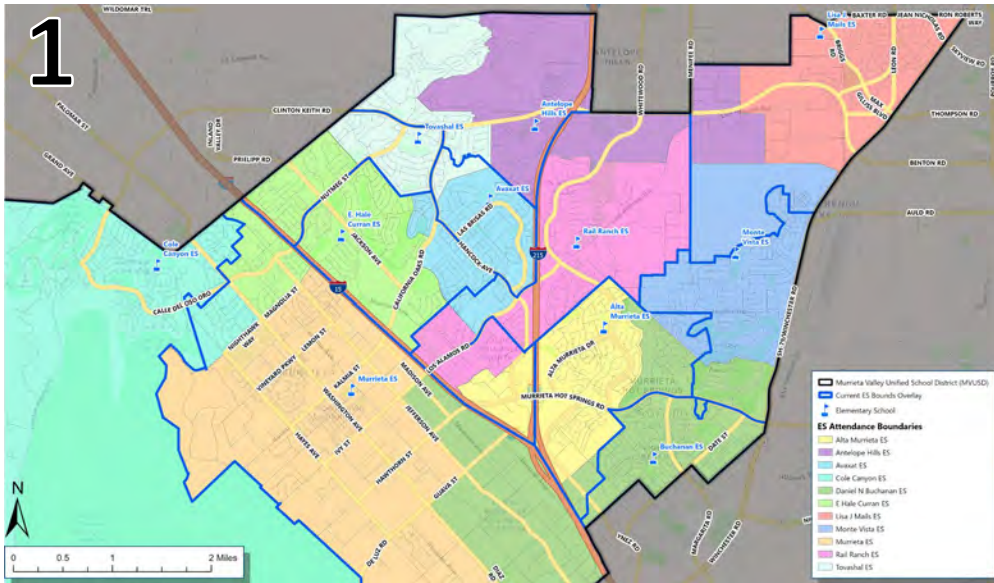


# Conceptual Feeder Patterns

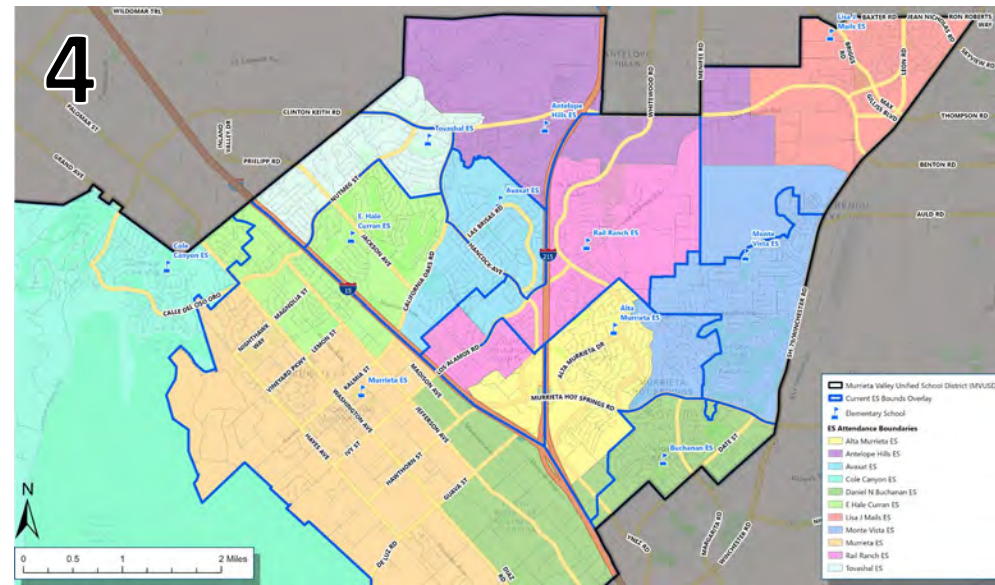
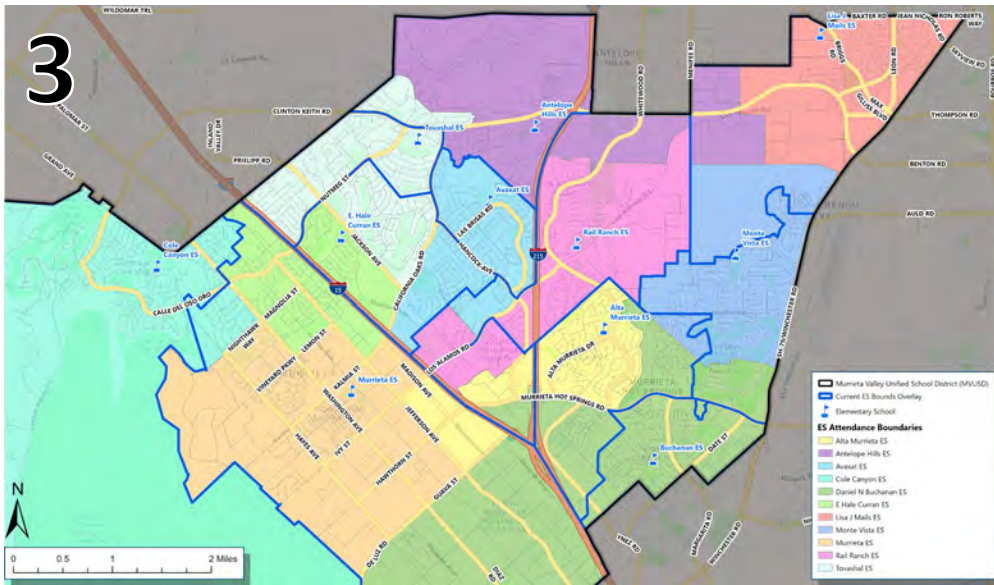


# Options Comparison Elementary Schools

# Elementary School Attendance Boundaries

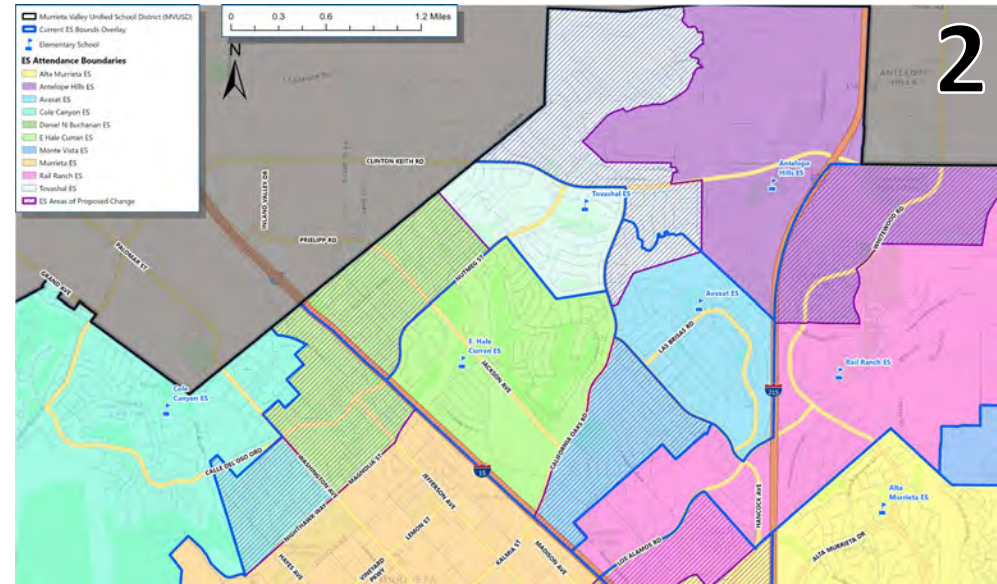
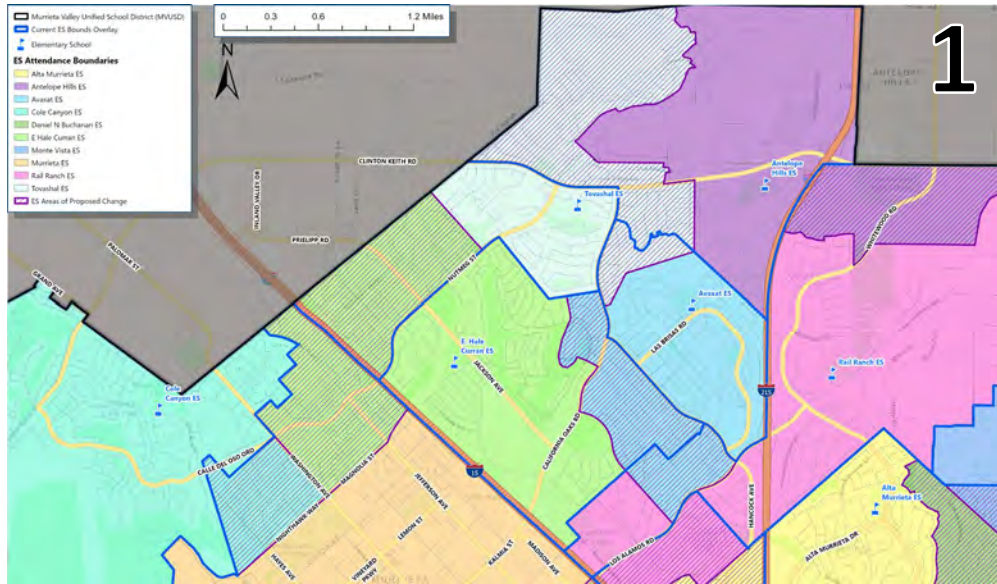


1. Conceptual Option 1
2. Conceptual Option 2
3. Committee Option 1
4. Internal Option 1

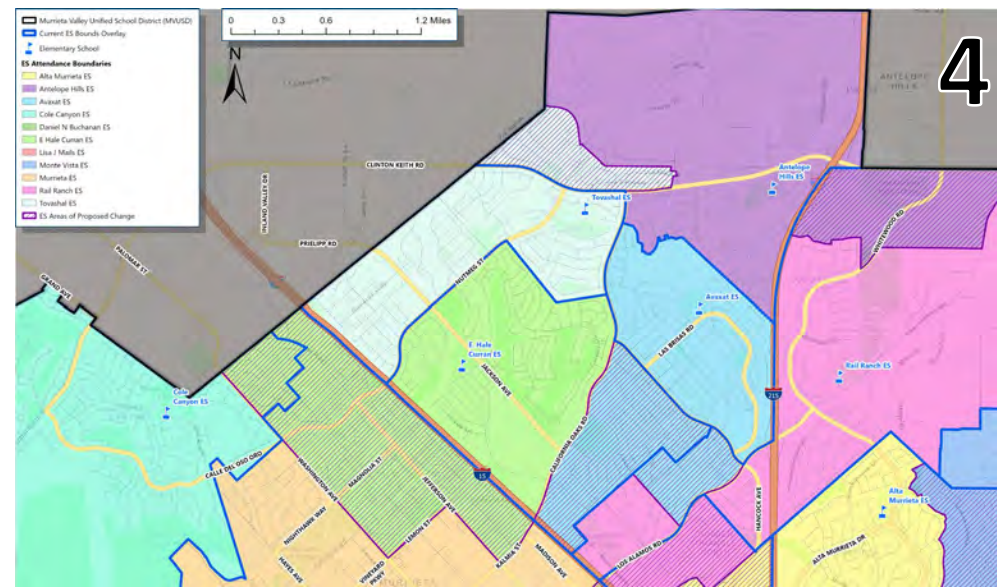
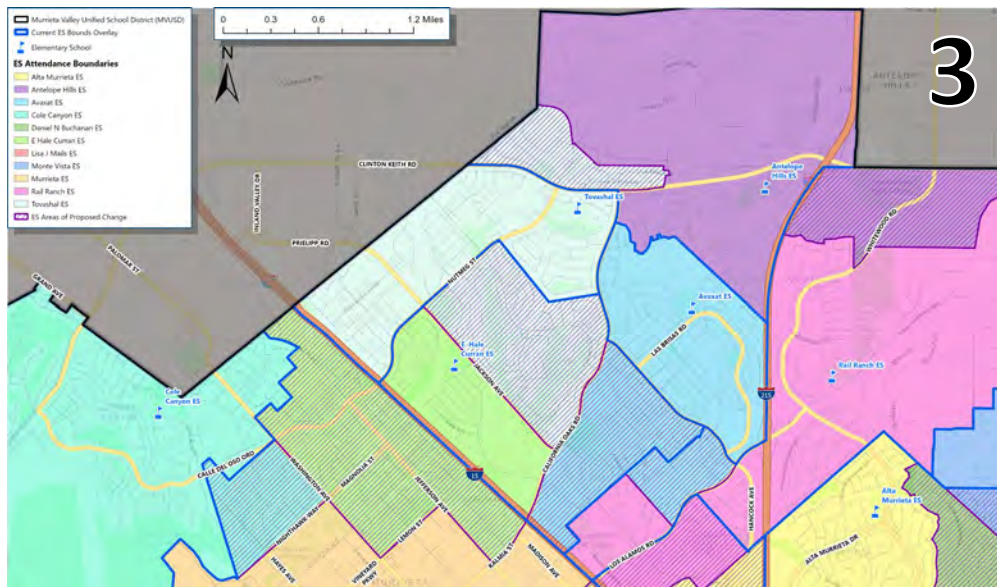




# Elementary School Attendance Boundaries

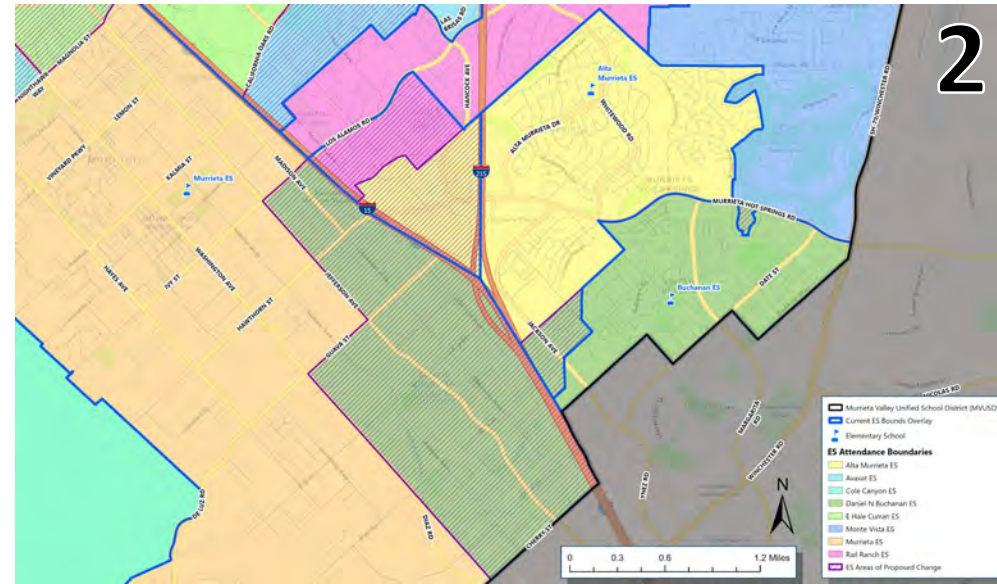
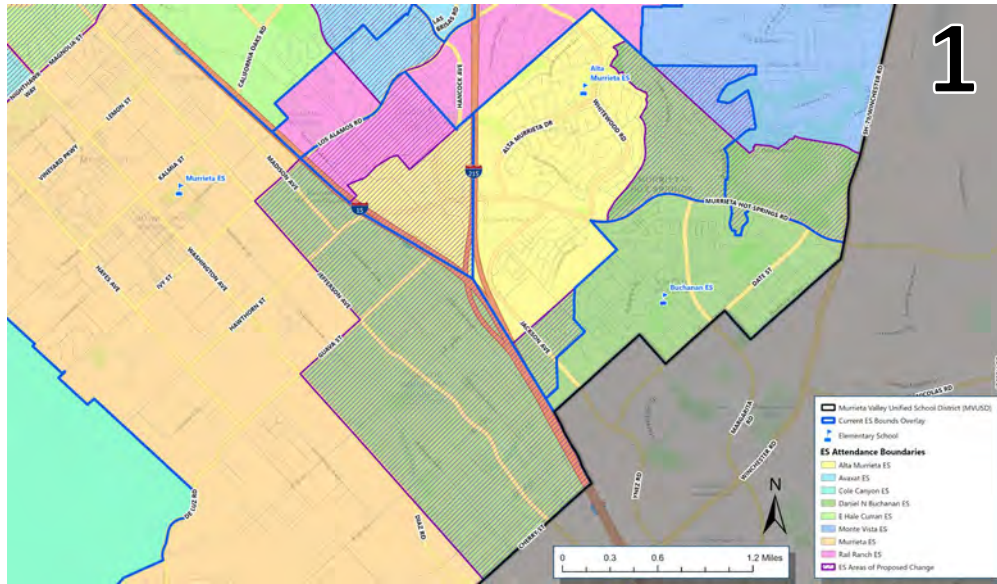


1. Conceptual Option 1
2. Conceptual Option 2
3. Committee Option 1
4. Internal Option 1

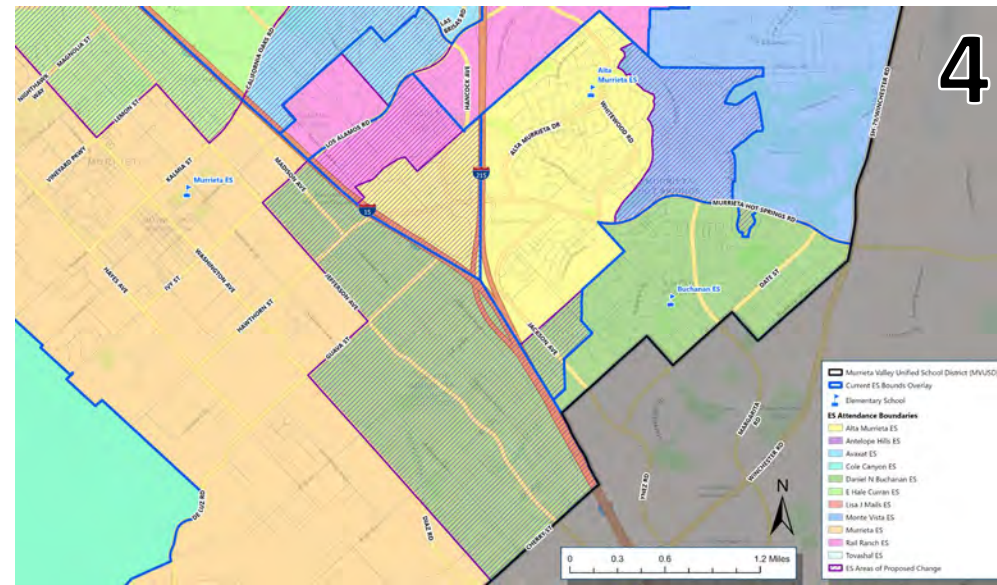
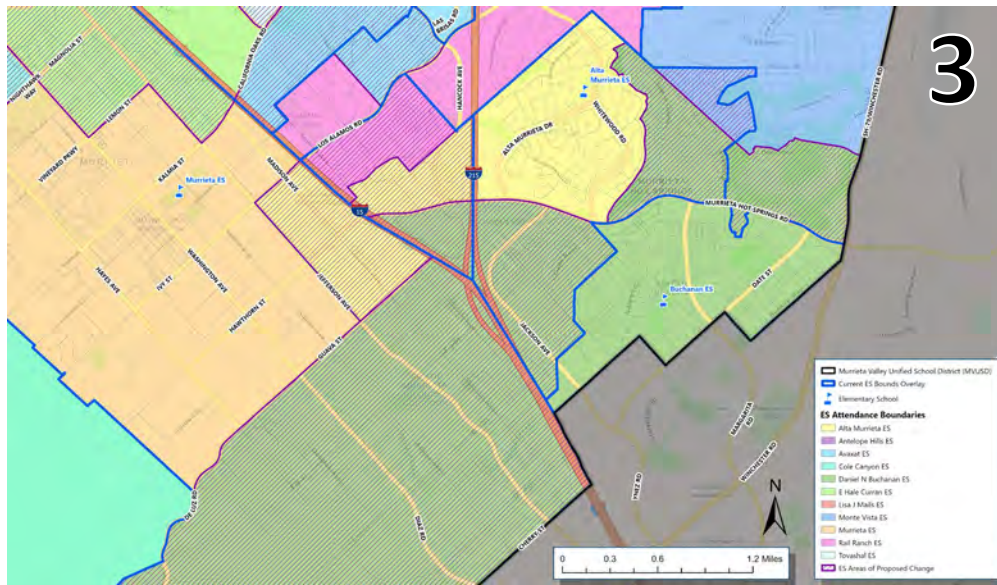




# Elementary School Attendance Boundaries

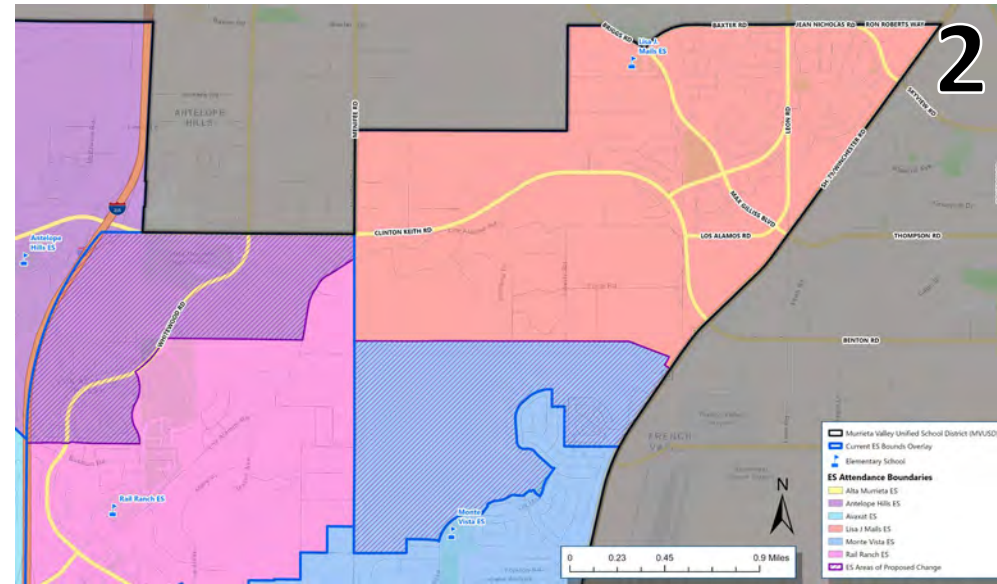
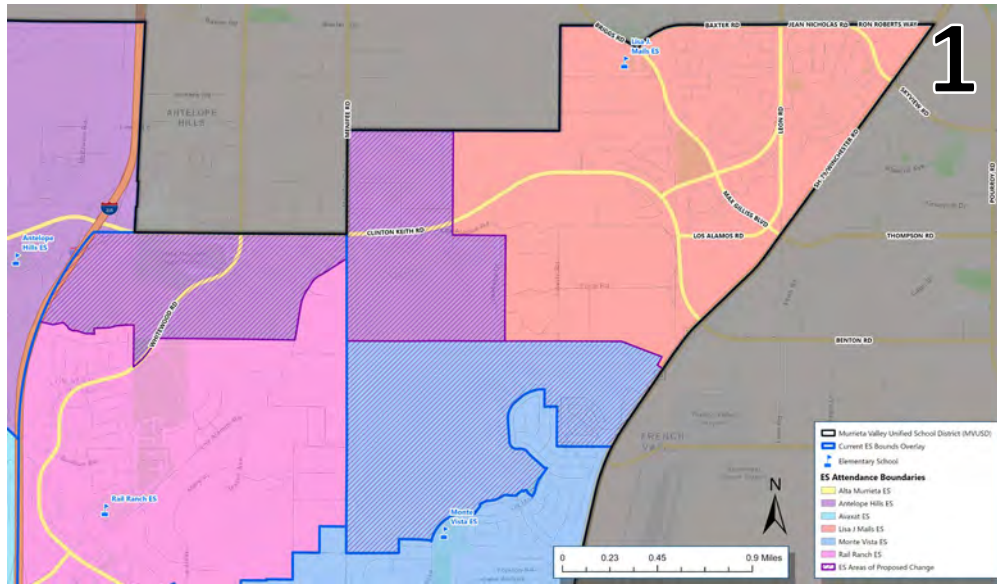


1. Conceptual Option 1
2. Conceptual Option 2
3. Committee Option 1
4. Internal Option 1

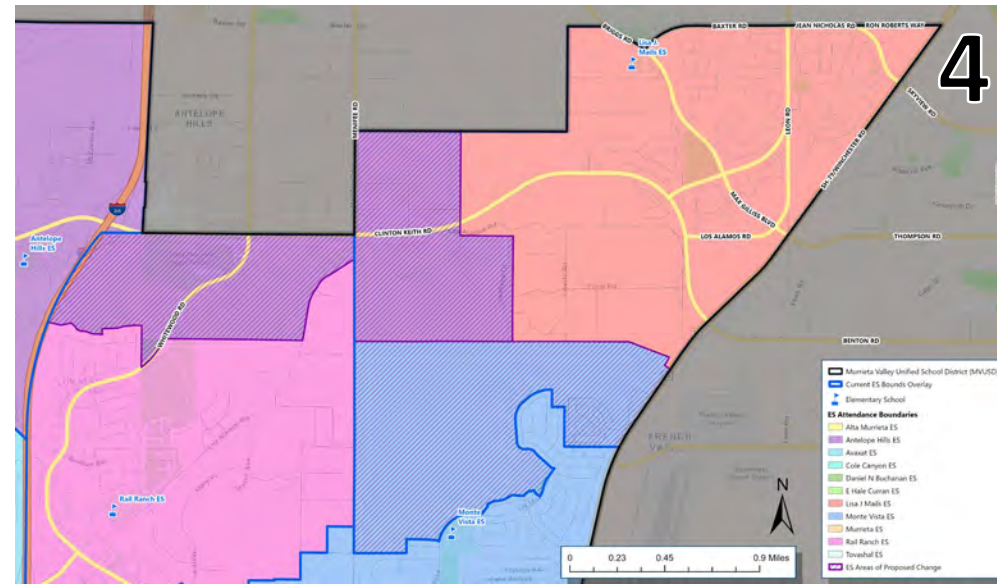
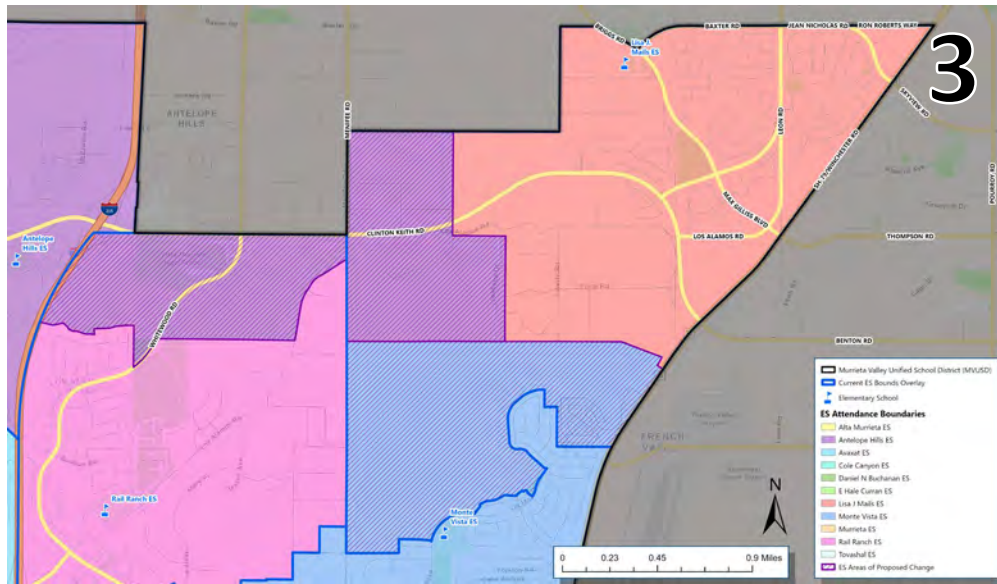




# Elementary School Attendance Boundaries



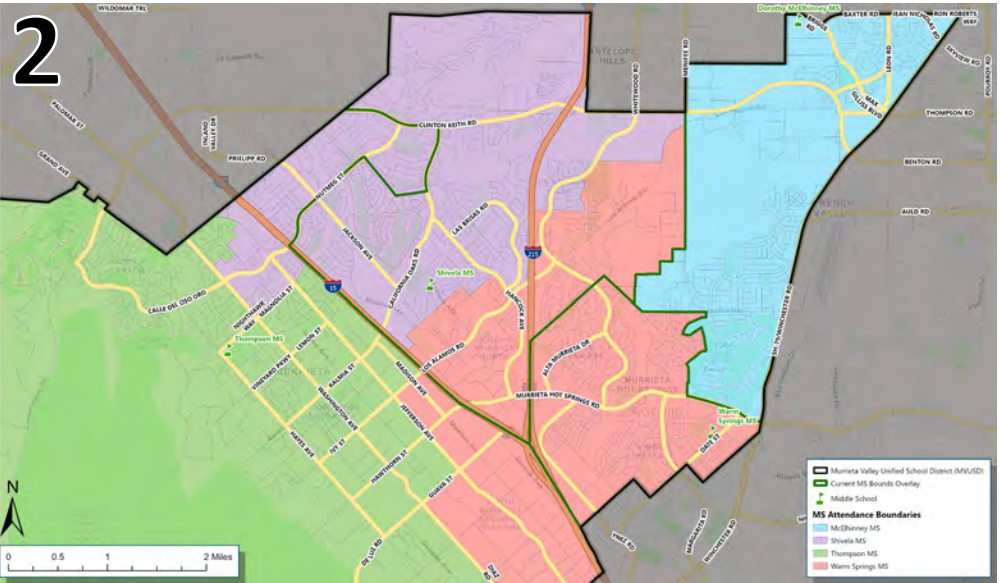
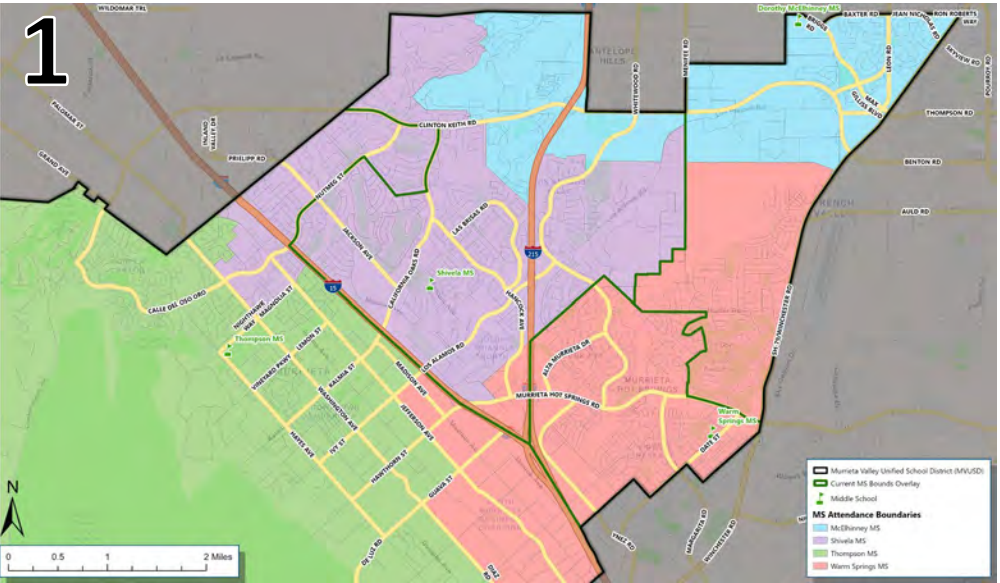
1. Conceptual Option 1
2. Conceptual Option 2
3. Committee Option 1
4. Internal Option 1



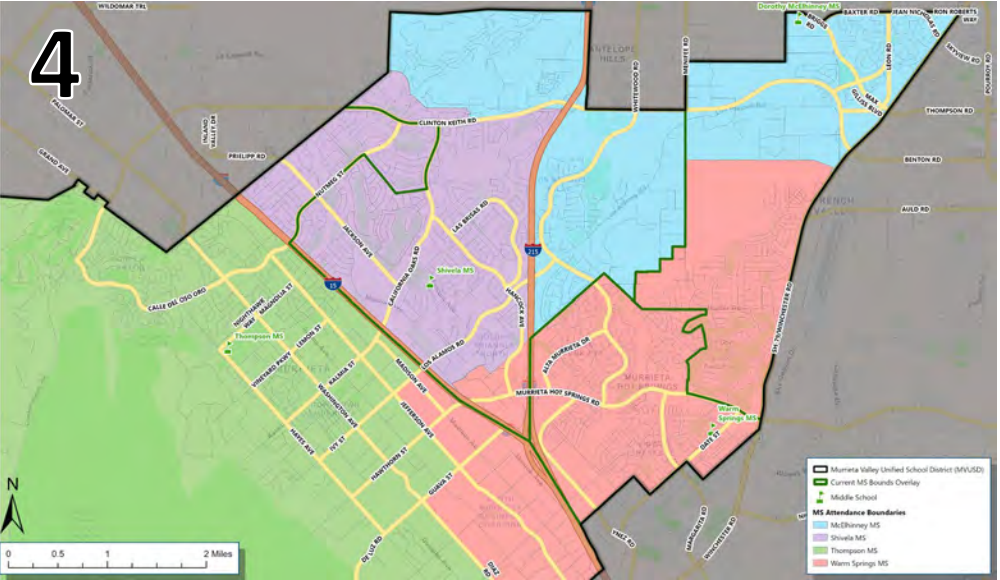
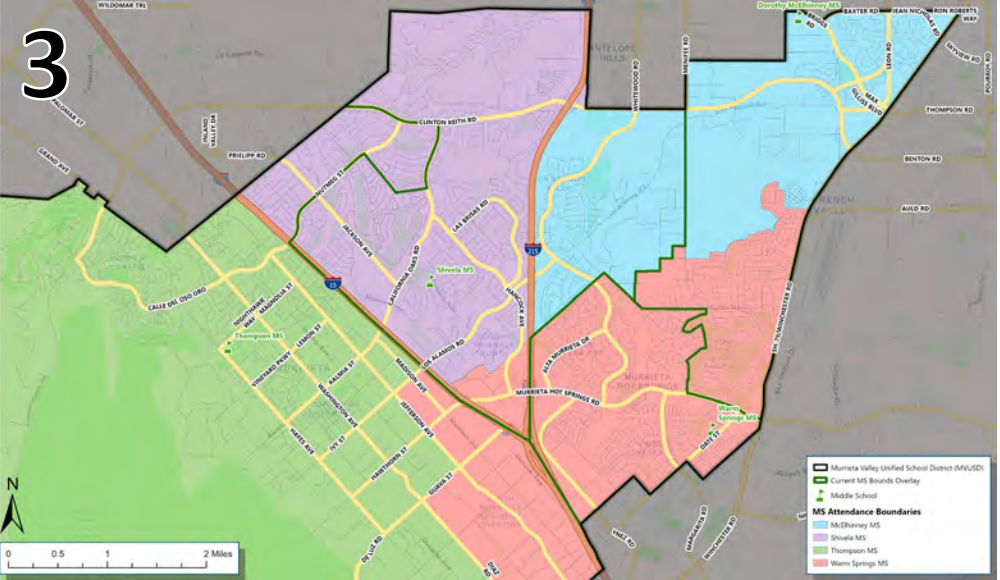


# Options Comparison Middle Schools

# Middle School Attendance Boundaries

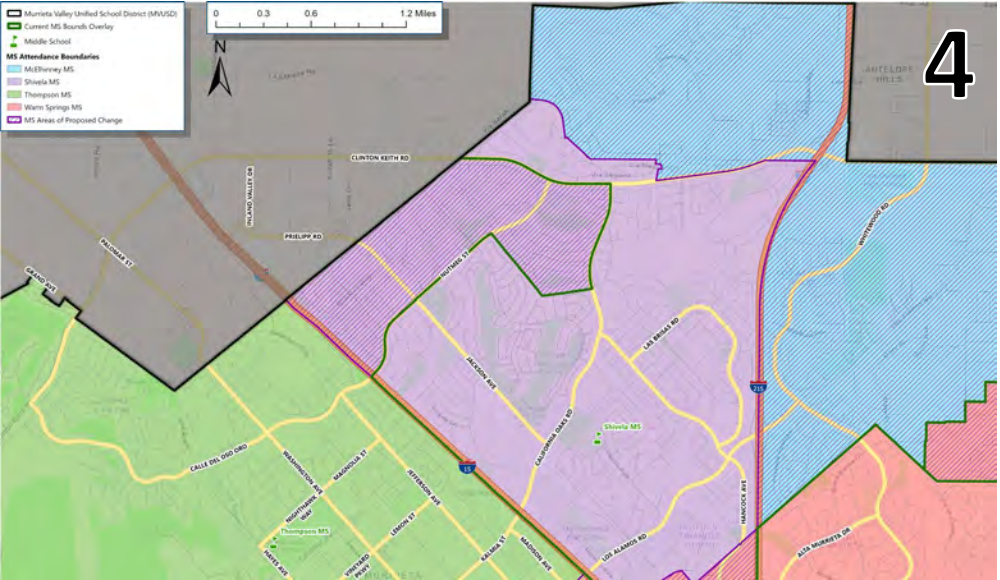
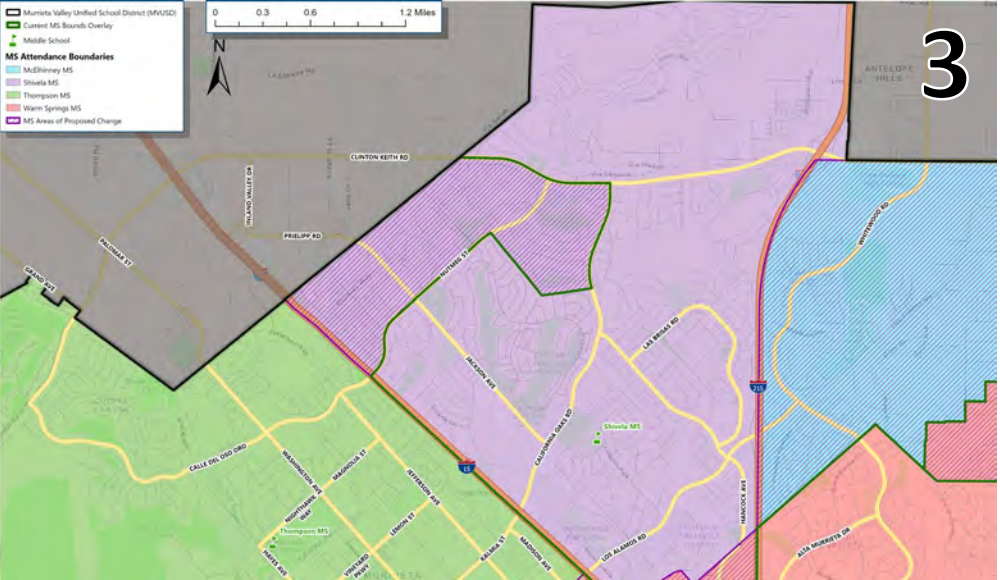
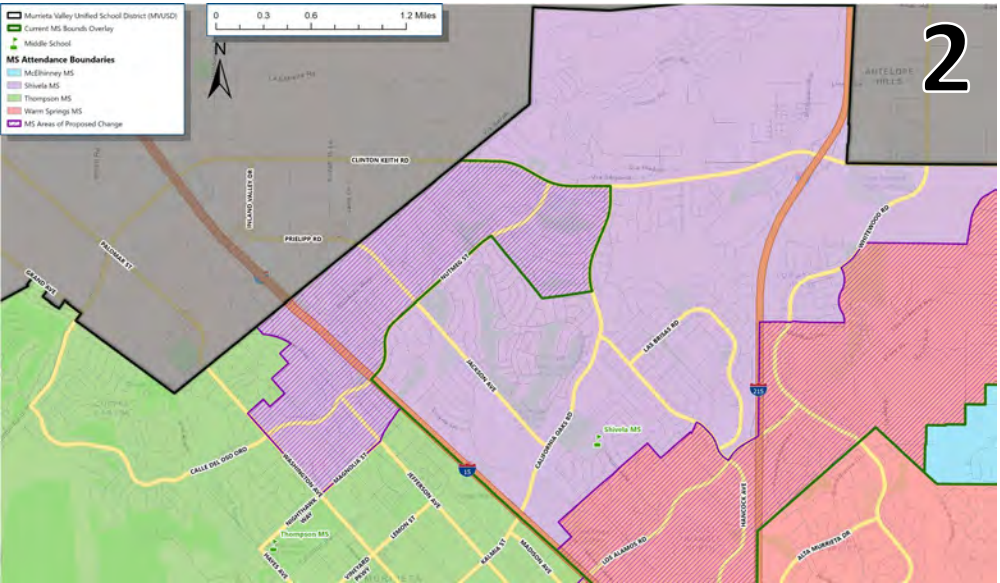
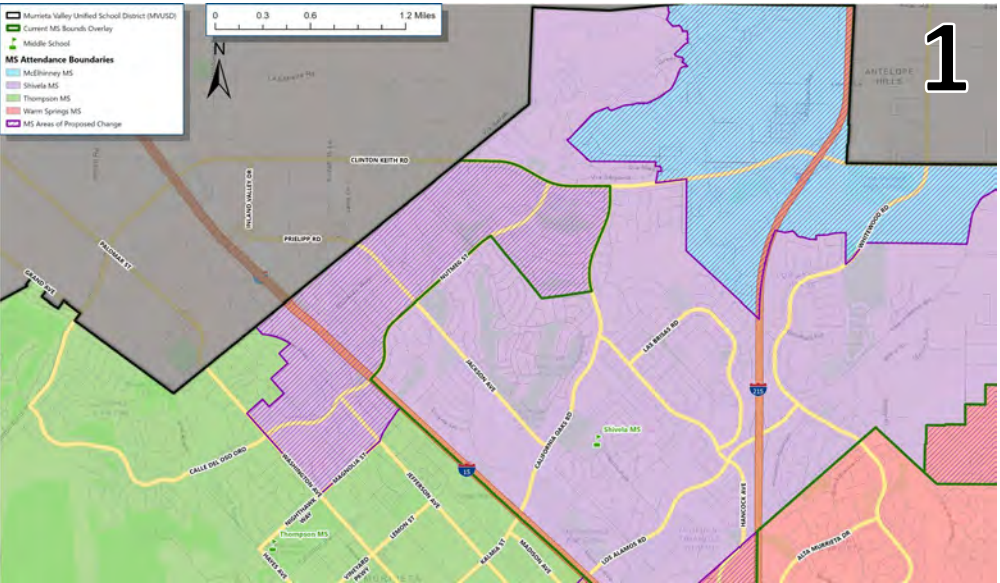


1. Conceptual Option 1
2. Conceptual Option 2
3. Committee Option 1
4. Internal Option 1





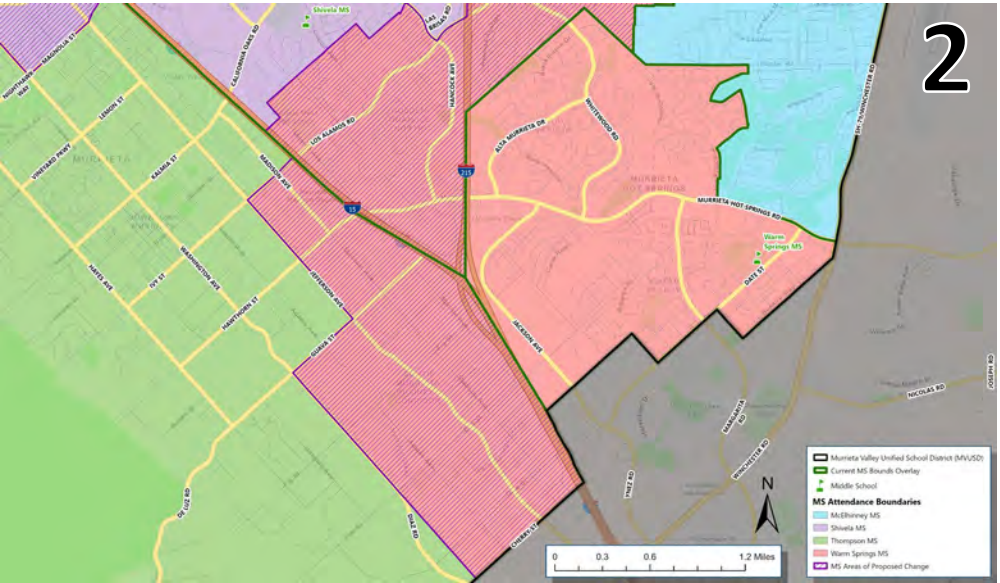
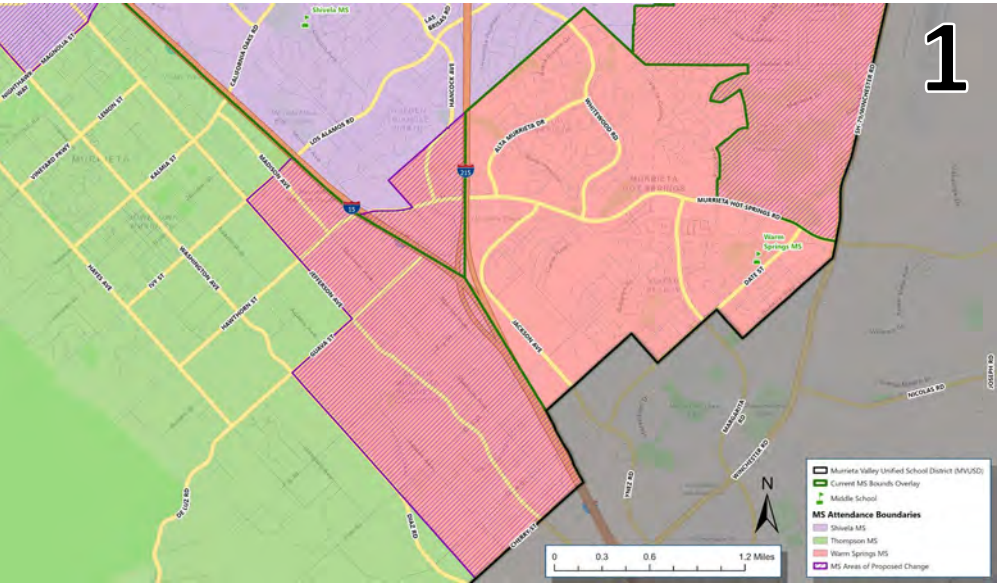
# Middle School Attendance Boundaries



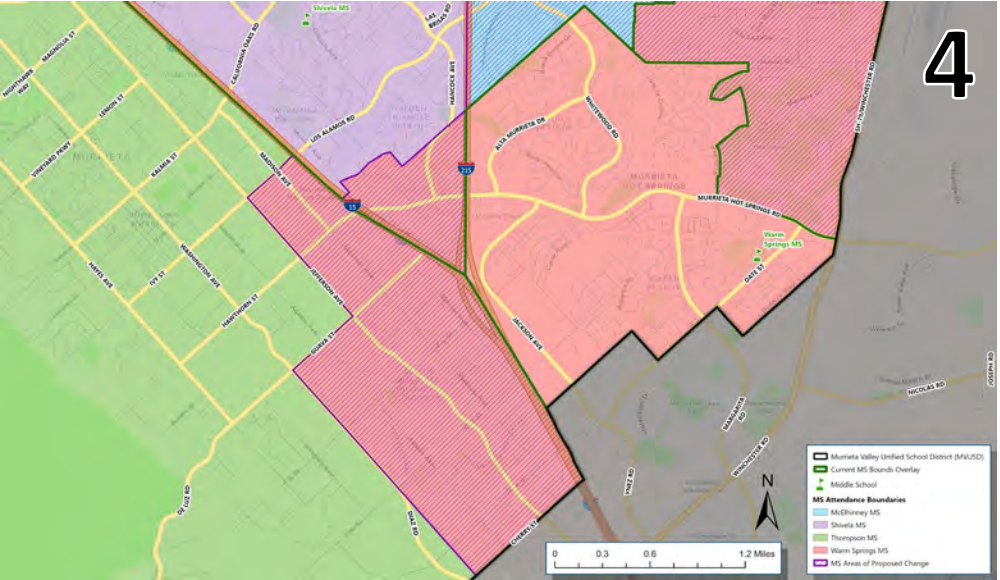
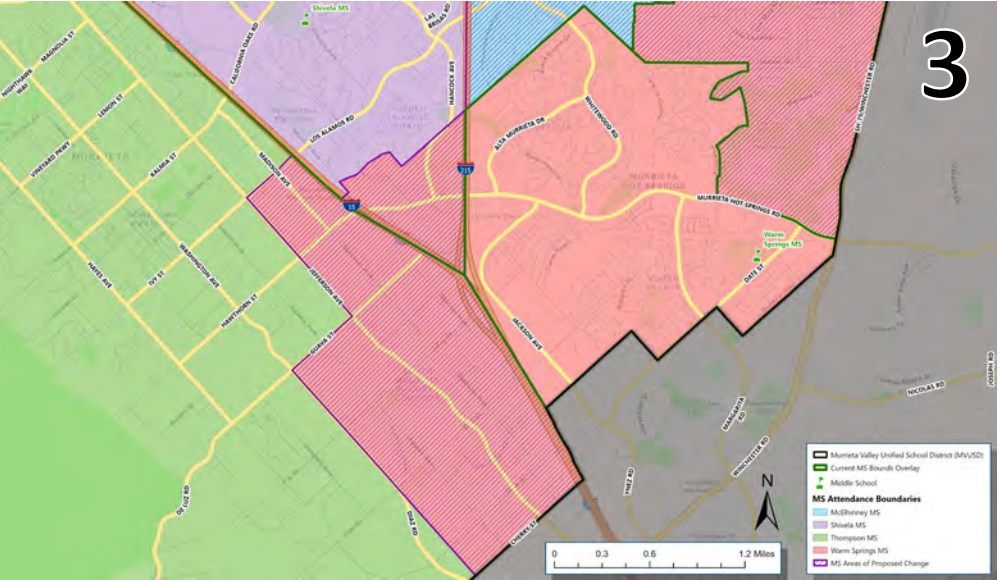
1. Conceptual Option 1
2. Conceptual Option 2
3. Committee Option 1
4. Internal Option 1



# Middle School Attendance Boundaries

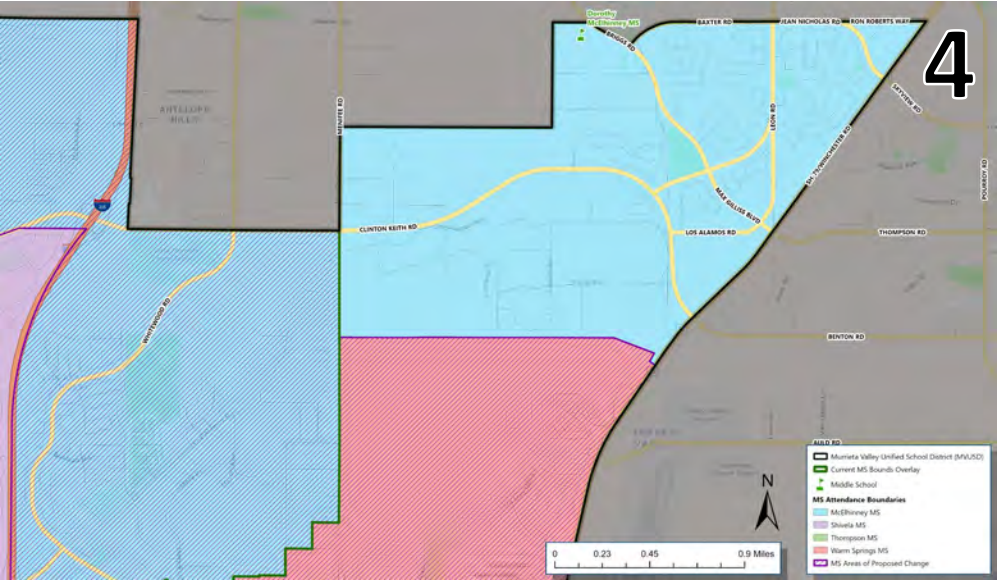
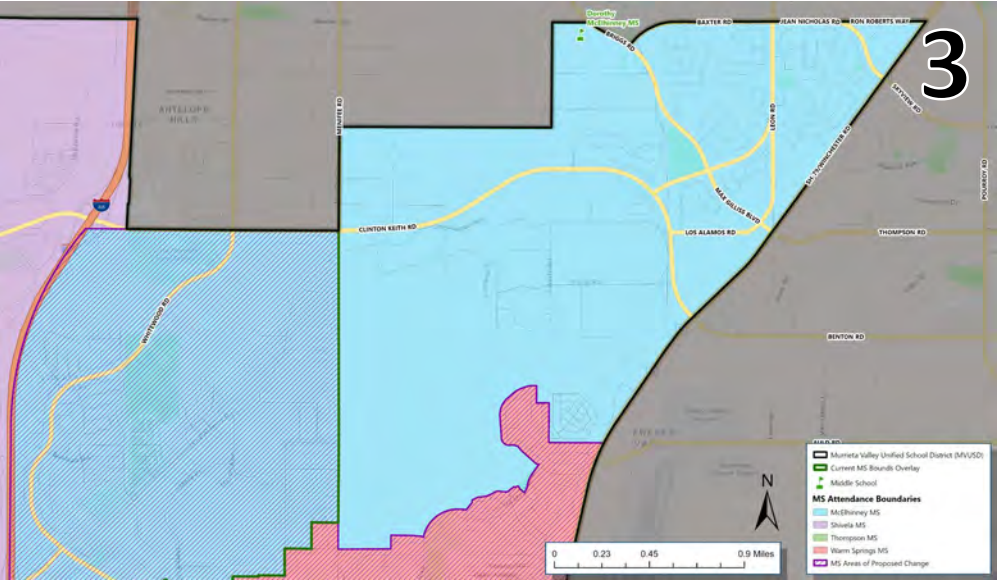
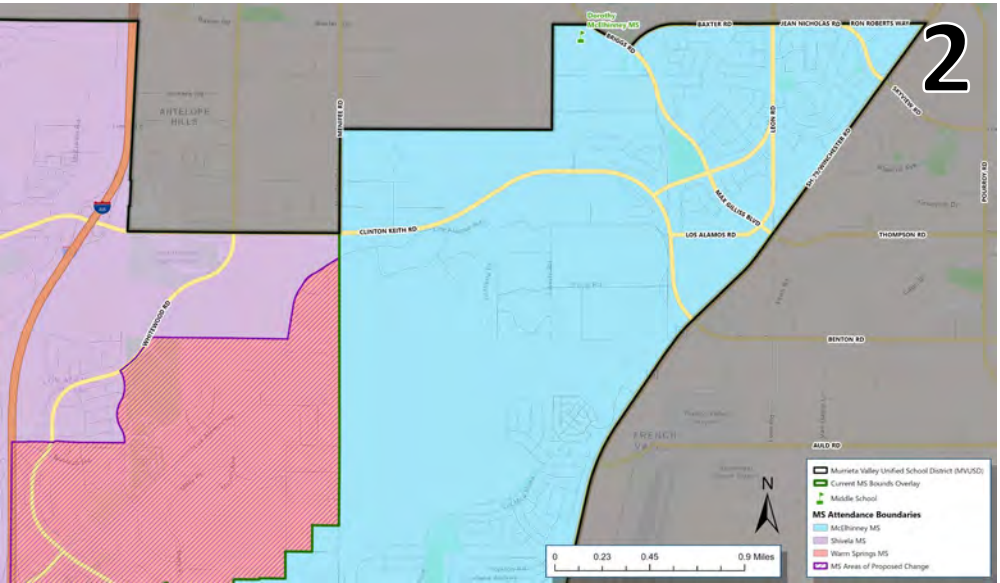
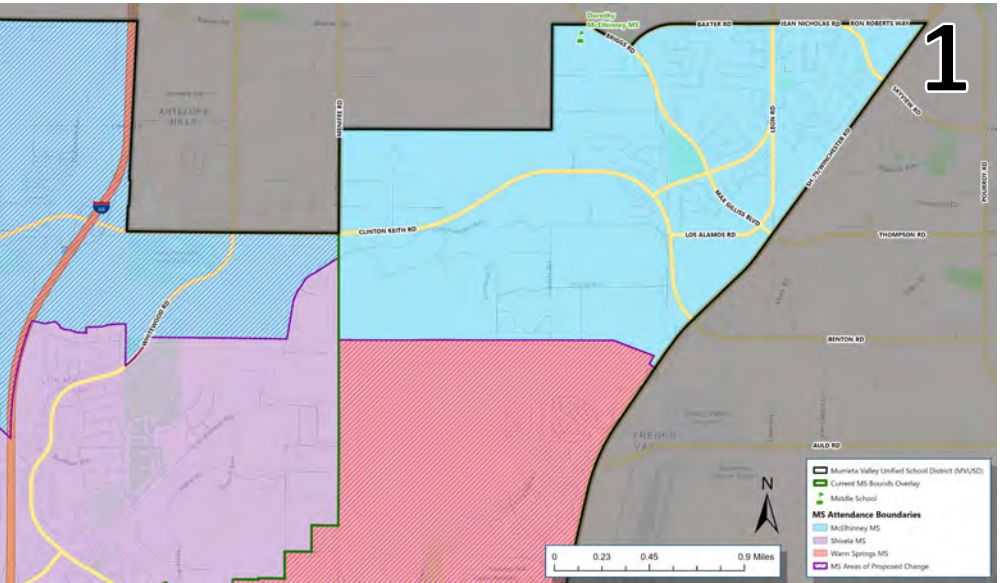


1. Conceptual Option 1
2. Conceptual Option 2
3. Committee Option 1
4. Internal Option 1





# Middle School Attendance Boundaries

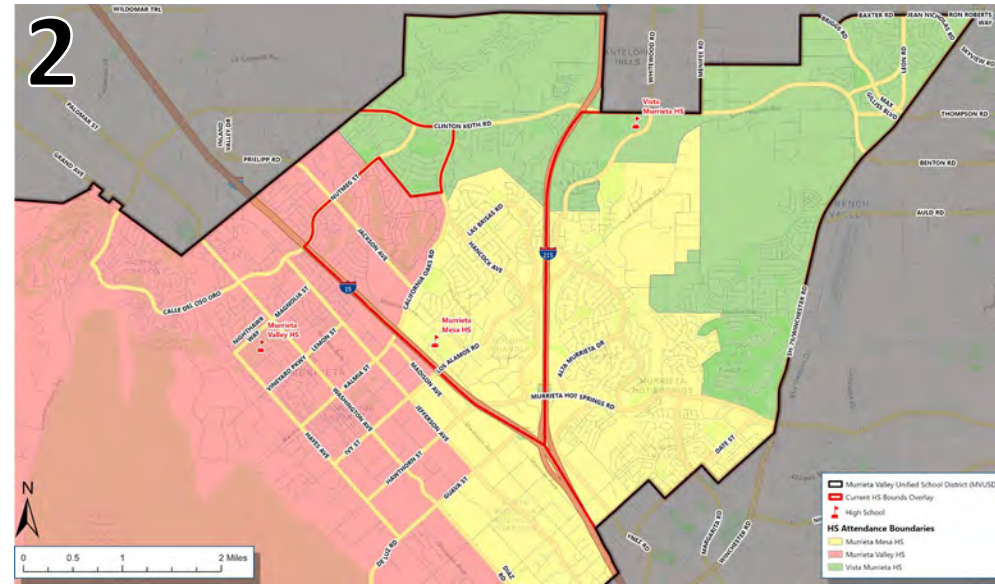
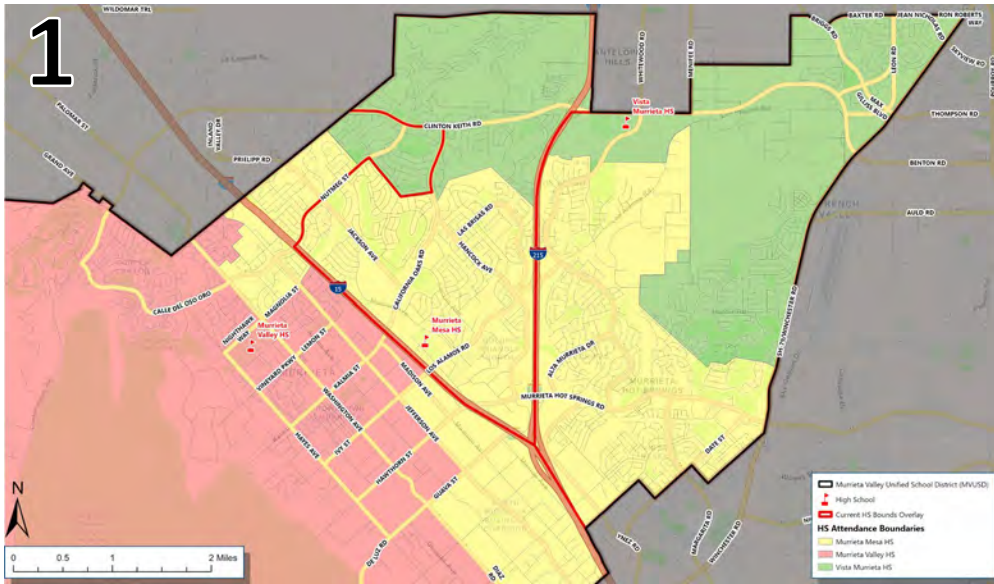


1. Conceptual Option 1
2. Conceptual Option 2
3. Committee Option 1
4. Internal Option 1

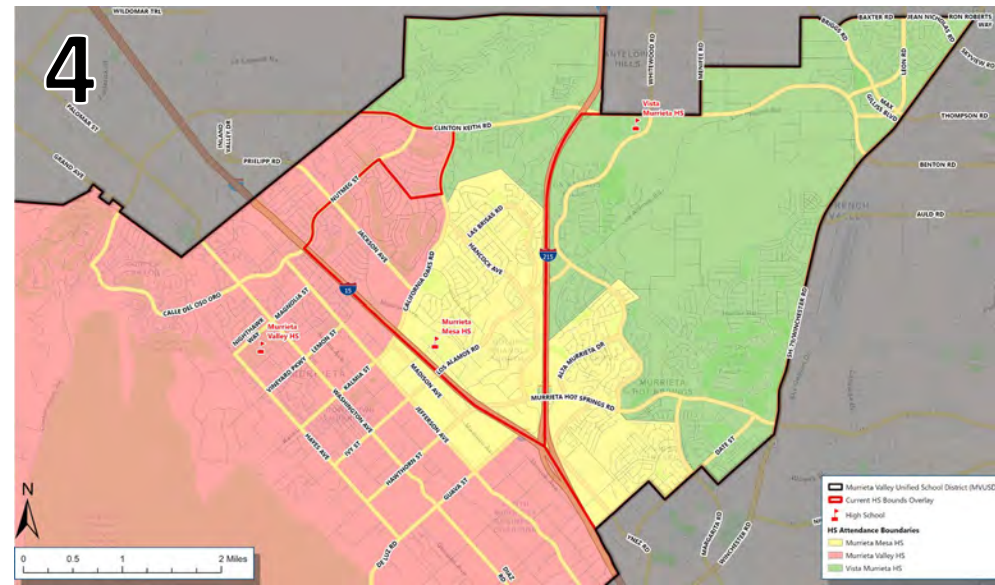
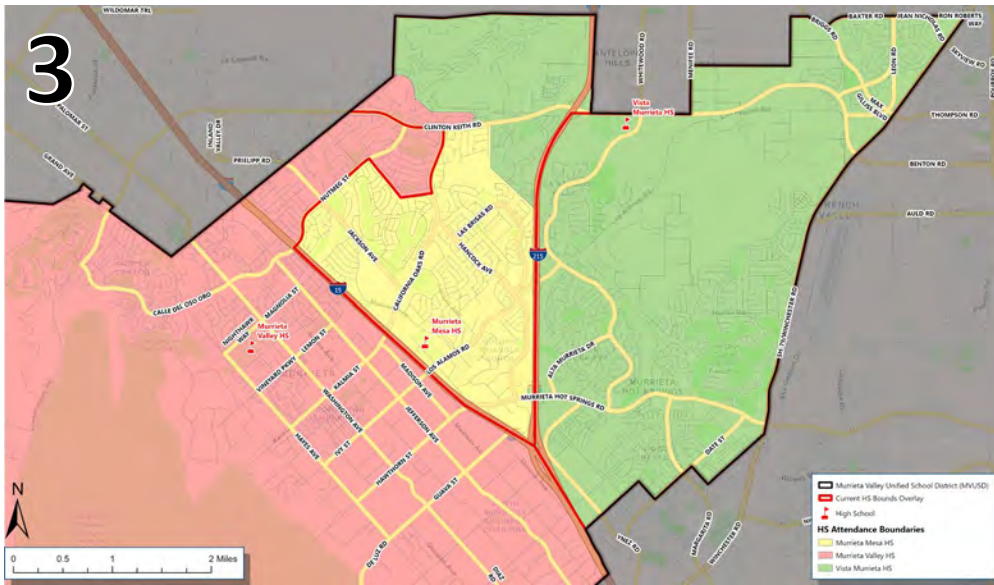
# Options Comparison High Schools



# High School Attendance Boundaries

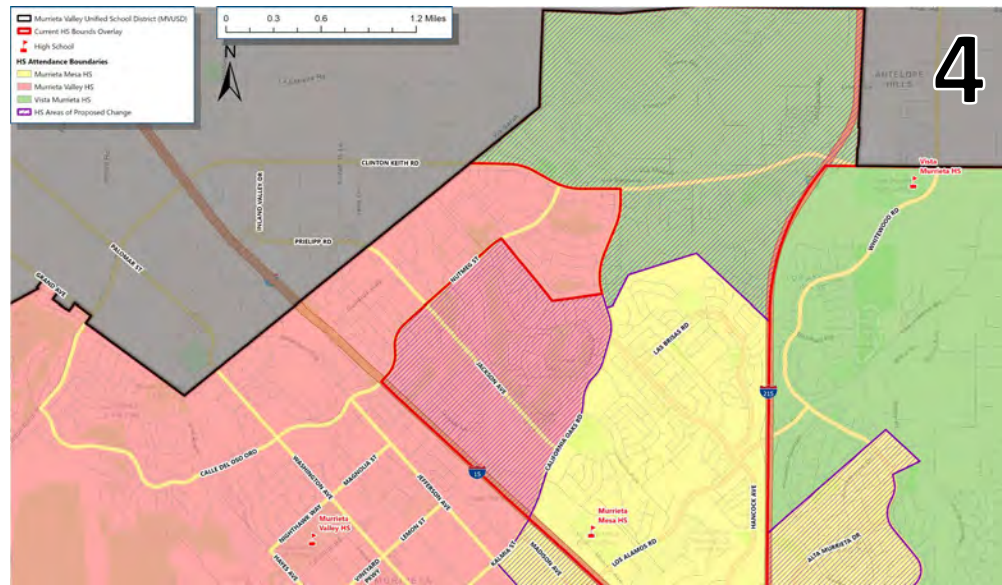
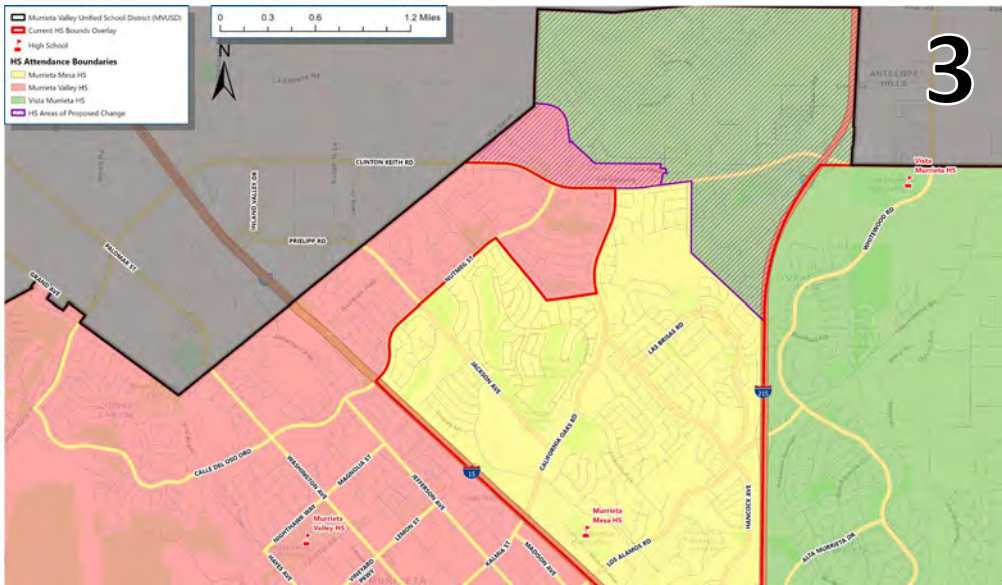
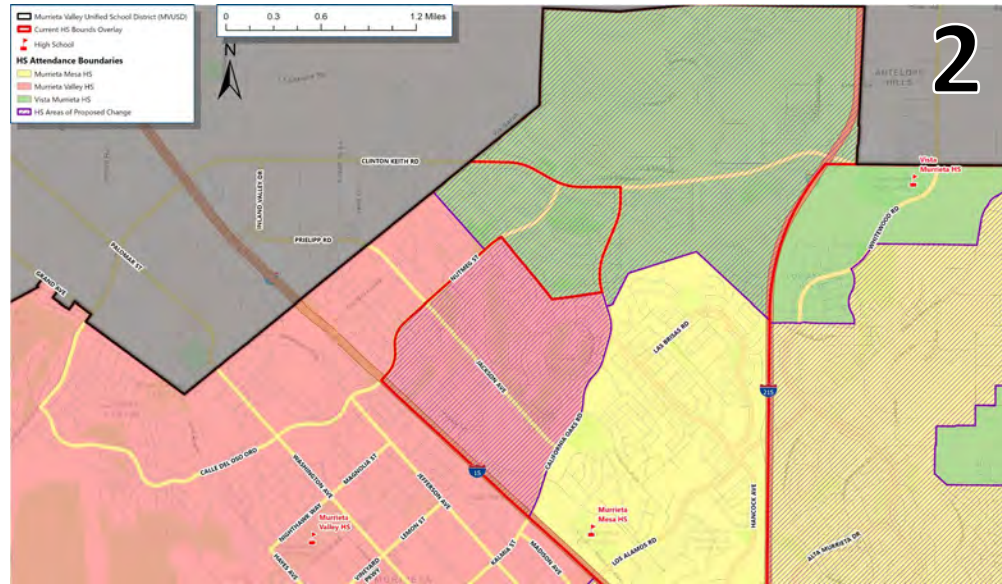
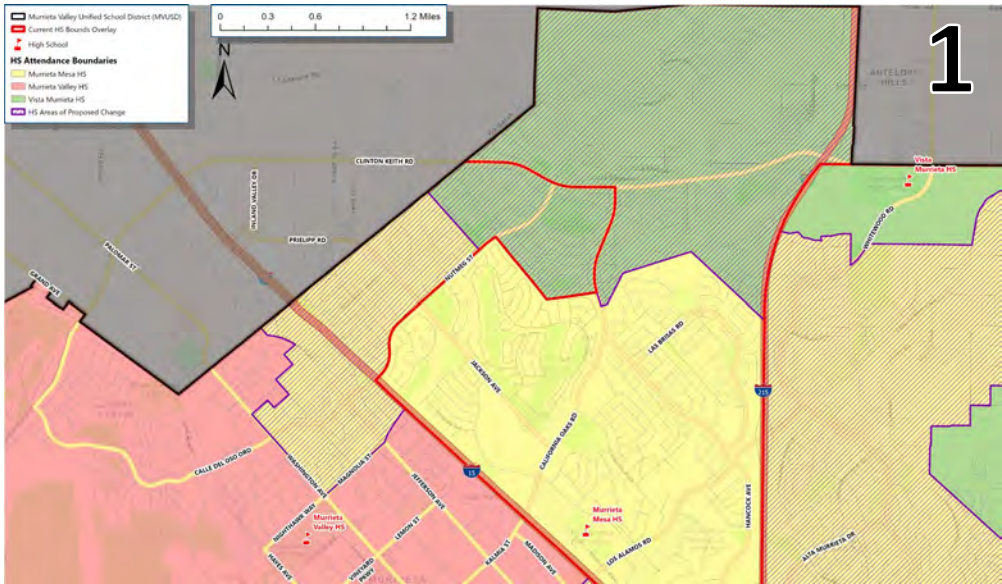


1. Conceptual Option 1
2. Conceptual Option 2
3. Committee Option 1
4. Internal Option 1





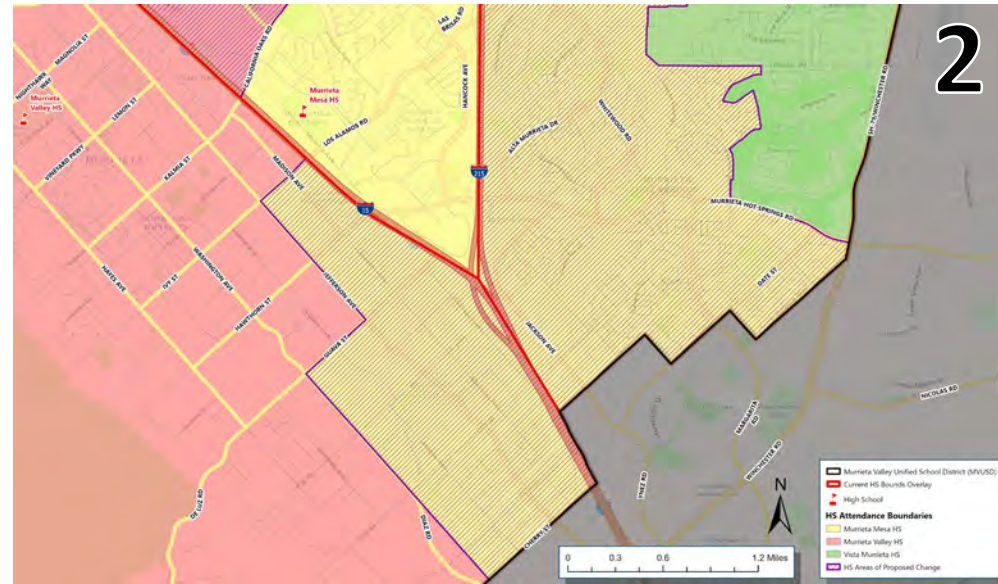
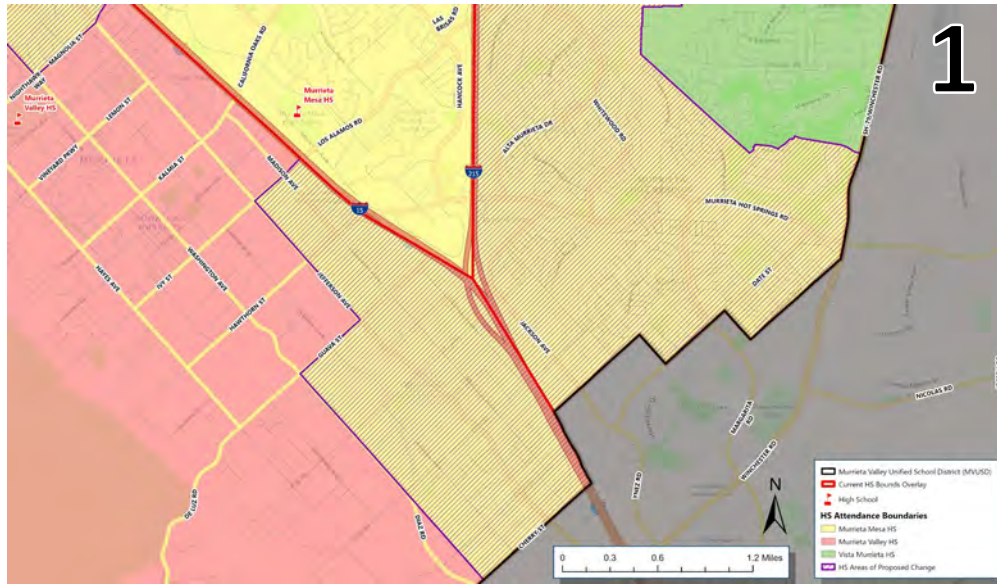
# High School Attendance Boundaries



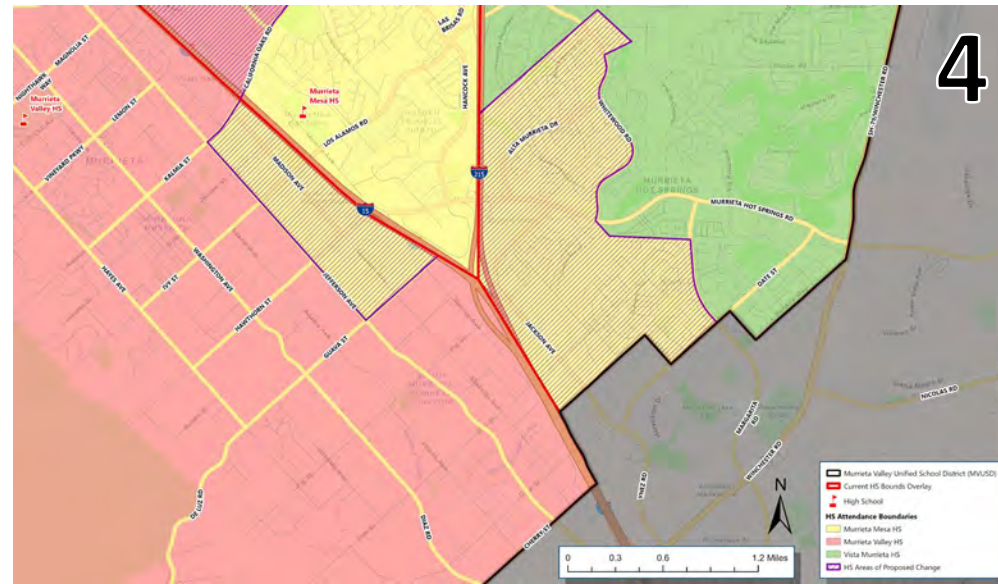
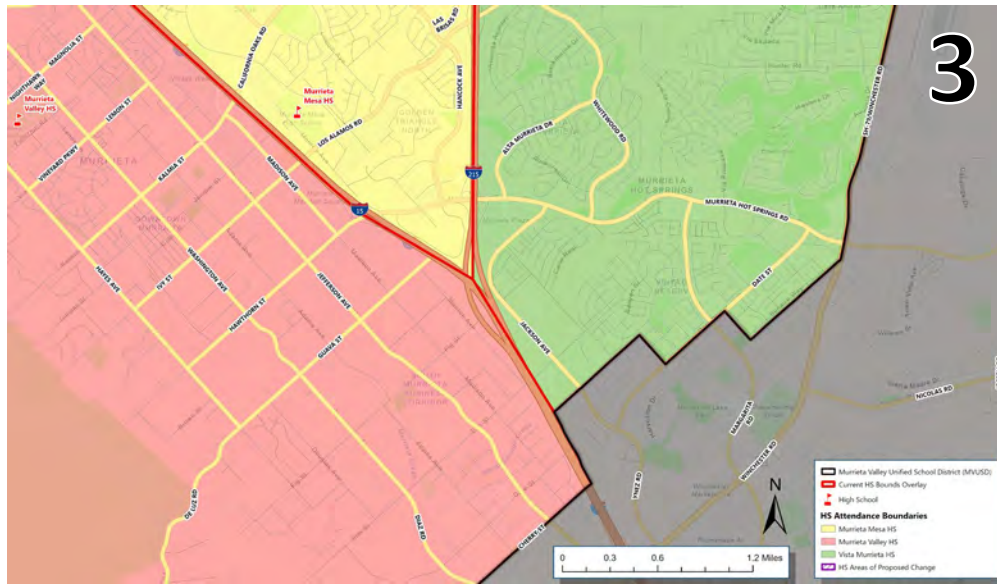
1. Conceptual Option 1
2. Conceptual Option 2
3. Committee Option 1
4. Internal Option 1



# High School Attendance Boundaries

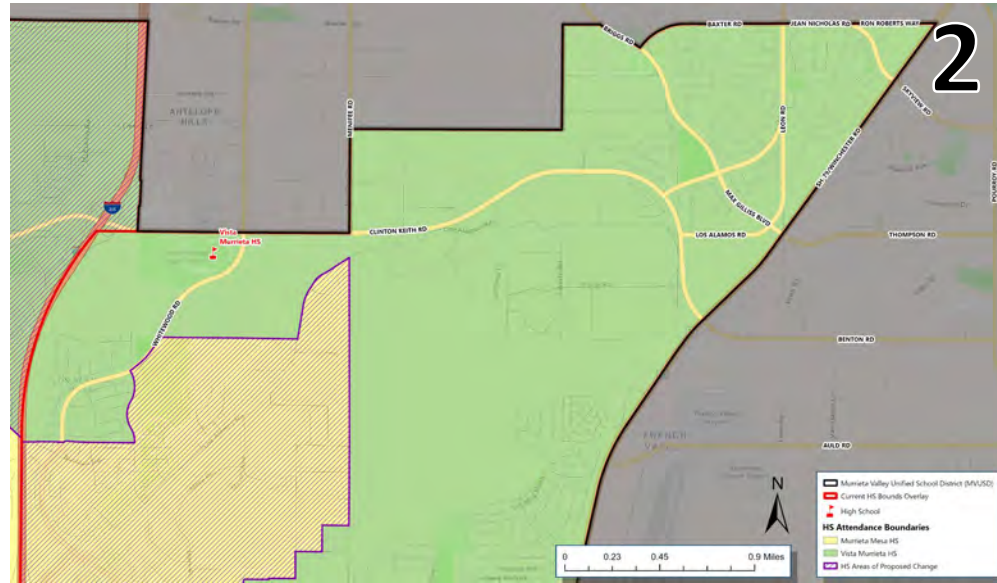
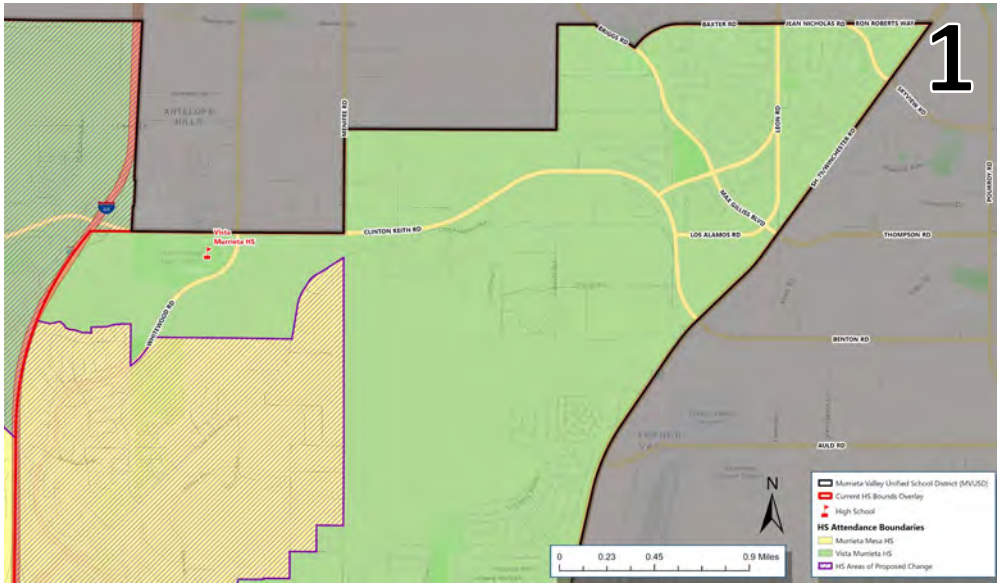


1. Conceptual Option 1
2. Conceptual Option 2
3. Committee Option 1
4. Internal Option 1





# High School Attendance Boundaries



1. Conceptual Option 1
2. Conceptual Option 2
3. Committee Option 1
4. Internal Option 1

