



Murrieta Valley Unified School District

Redistricting Advisory Committee #1

October 7, 2024

To Inspire Every Student to Think, to Learn, to Achieve, to Care

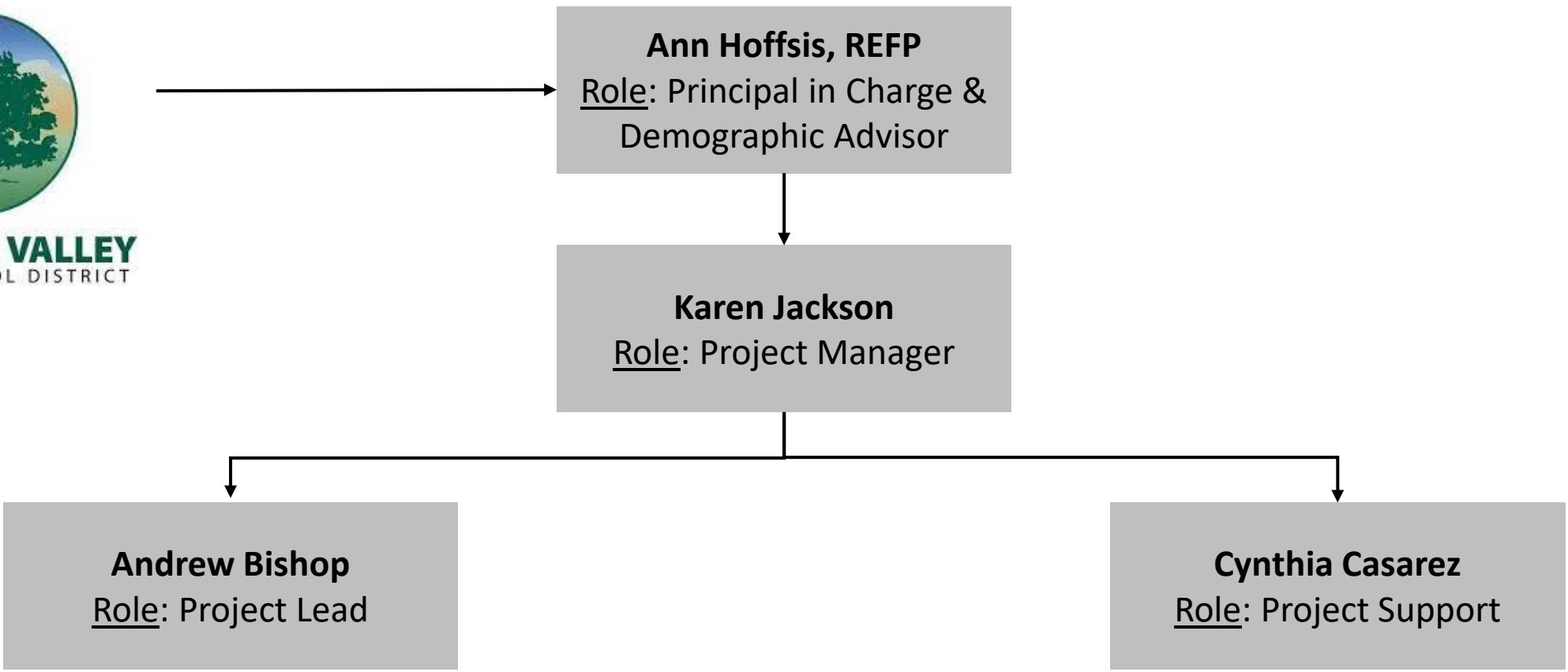


Agenda

- 1 Project Team & Committee Overview
- 2 Project Approach & Timelines
- 3 Background Data
- 4 Criteria Survey Results
- 5 Q & A

Project Team & Committee Overview

Woolpert Team



Redistricting Advisory Committee

Purpose

- Assist Woolpert (Consultant) in evaluating criteria and developing a set of boundary options to address new residential development and unbalanced schools(including updates).
- Boundaries should be developed to ensure equity and the continued diversity of school populations and prepare the District for future elementary enrollment growth.
- The committee shall present recommended boundary changes to the Board of Education by January 17, 2025.

Responsibilities

- **Respond to information and recommendations** providing local perspectives that honors our goals of balancing schools equitably during the creation of the new school boundaries and feeder patterns to address projected growth. Some examples of local perspectives are walkability, neighborhood integrity, traffic volume / patterns, etc.
- **Provide structured feedback on boundary options** proposed by Woolpert during the iterative development process concerning the potential impact of the boundaries to the local community
- **Provide feedback on community surveys** to be given to the community and participate in community engagement events
- **Present the recommendations agreed to by the committee to the Board of Education.** The presentation should include summarized information to inform the board of the impact of changes across the diverse populations of the school district

Redistricting Advisory Committee

Limitations

- Demographic data will be provided by the school district to Woolpert. It is outside the scope of the advisory committee to provide or reference externally sourced data as inputs to the boundary redistricting process.
- Boundaries are drawn using industry GIS software and based on the address and demographic data provided by the school district. It is outside the scope of this advisory committee to create and propose any maps outside the contracted services provided by Woolpert.

District Resources

- Darren Daniel, Deputy Superintendent – primary contact for both the consultant and the Redistricting Advisory Committee.

Project Approach & Timelines

Planning Process

Boundary Planning

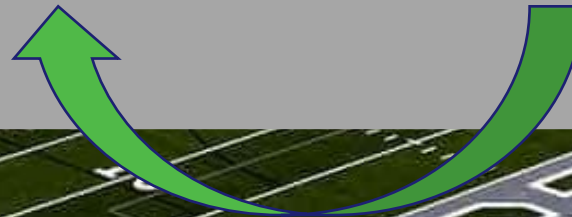
Background Data

**Advisory
Committee**

**Boundary Work-
Sessions**

**Community
Engagement**

Recommendation



Draft Project Timeline

Date	Format	Event	Description
Monday, October 7, 2024	In person	Committee #1	Organizational meeting, background data
Week of October 14, 2024	Virtual	Internal Scenarios	Work session; develop initial scenarios to are with Redistricting Committee
Monday, October 21, 2024	Virtual	Committee #2	Review scenarios, receive input and feedback
Week of November 11, 2024	Virtual	Internal scenarios	Work session: refine scenarios based on committee input
November 18, 2024	Virtual	Committee #3	Review refined scenarios, provide additional feedback, prepare for community dialogue
December 2-13, 2024	In person	Community Dialogue	Present refined scenarios to the public, 2-3 meetings, dates TBD
January 6-17, 2025	In Person	Committee #4	Review community feedback, make adjustments for recommendation, date TBD
Week of January 13, 2025	Virtual	Internal Recommendation Review	Work session: Finalize recommendation
January 20, 2025	Virtual	Internal Board Prep	Post complete draft report to Board Agenda
January 23, 2025	In person	Board Meeting	Board first reading and discussion
February 3, 2025	Virtual	Final Board Prep	Post final report to Board Agenda
February 13, 2025	In Person	Board Meeting	Final Report for Board Action

Background Data

Overview

Criteria Identified in Committee Charge

- Boundaries should be developed to ensure balanced and equitable schools to accommodate future enrollment growth
- Examples of local perspectives are walkability, neighborhood integrity, traffic volume / patterns, etc.

Additional items to consider

- Capacity utilization (%)
- School feeder patterns
- Transportation impacts

Definitions

Enrollment – The number of students attending/assigned to a school.

Live = students that reside within the boundary

Attend = students attending that facility, regardless of residence

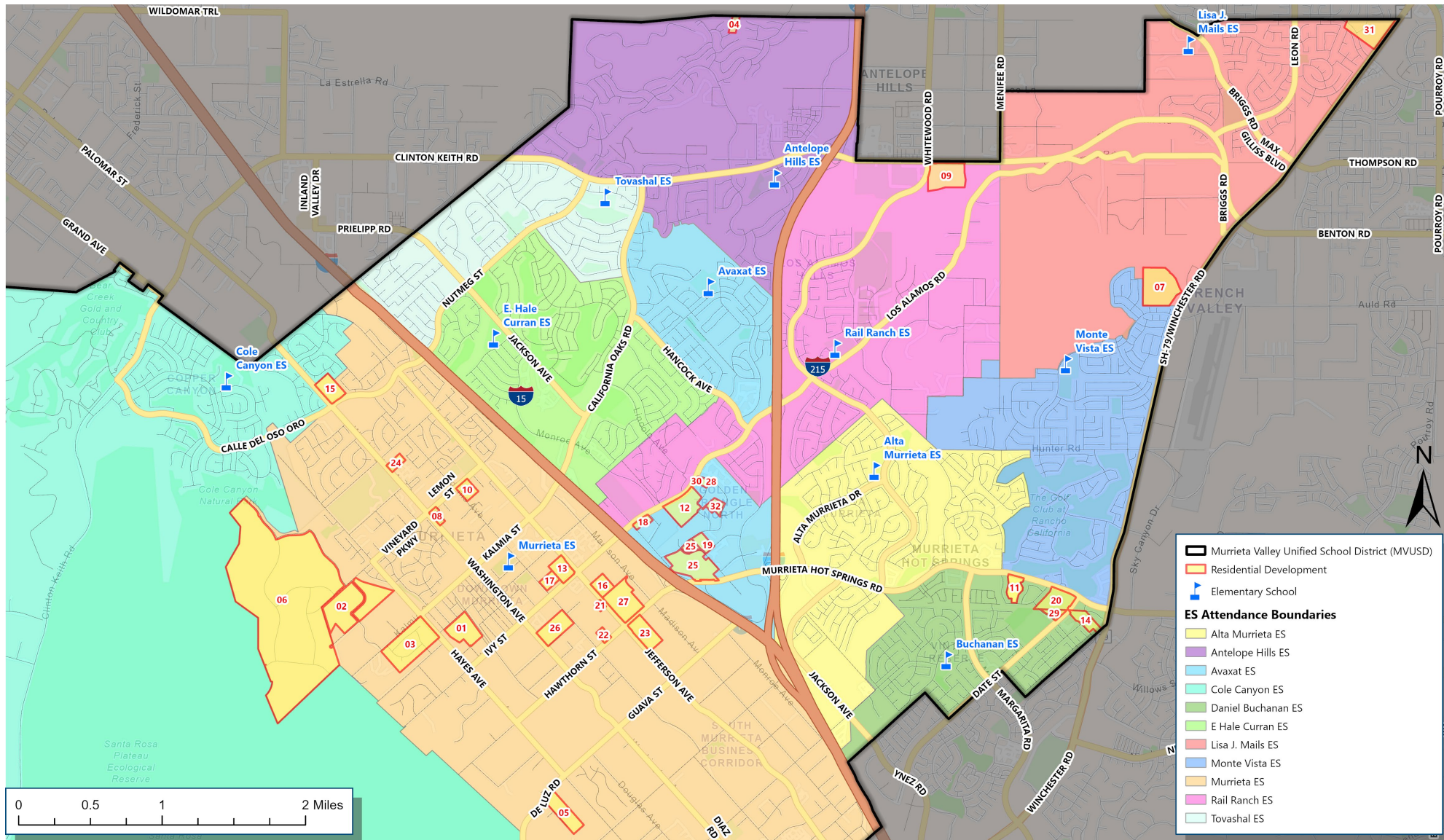
Capacity – The number of students a facility can serve, this is a fluid number that is impacted by programs within each building.

Utilization – Number of students divided by the capacity of the building.

Planning Unit – a subset of a boundary that is used to aggregate data to quickly illustrate the impacts of potential boundary changes.

Feeder Pattern – the proportion of students that feed from one school to another school at the next school level (i.e. elementary → middle → high).

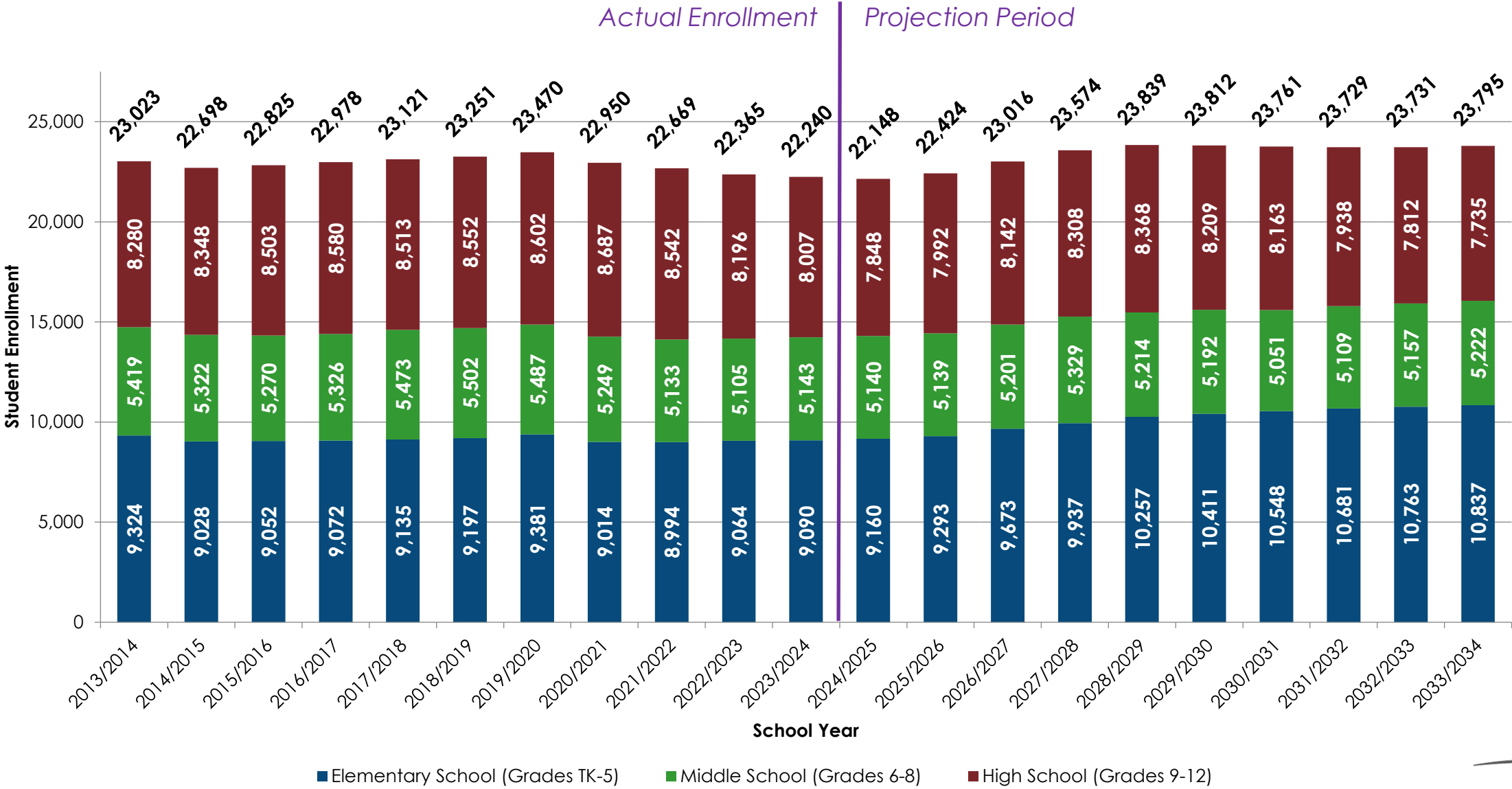
Future Residential Development



Future Residential Development

Map Number	Project	Unit Type	Remaining Units	ES Boundary	MS Boundary	HS Boundary
1	Murrieta B Street	SFD	62	Murrieta ES	Thompson MS	Murrieta Valley HS
2	Sauer Project	SFD	129	Murrieta ES	Thompson MS	Murrieta Valley HS
3	Kalmia Equestrian	SFD	35	Murrieta ES	Thompson MS	Murrieta Valley HS
4	Vinca Ct/Adele Holman Greer B Trust	SFD	4	Antelope Hills ES	Shivela MS	Murrieta Mesa HS
5	Xiong Wu Ho	SFD	7	Murrieta ES	Thompson MS	Murrieta Valley HS
6	The Vineyard Vista	SFD	877	Murrieta ES	Thompson MS	Murrieta Valley HS
7	Willow Springs	SFD	223	Lisa J Mails ES	Dorothy McElhinney MS	Vista Murrieta HS
8	Poppy Lane	MFA	25	Murrieta ES	Thompson MS	Murrieta Valley HS
9	Vintage Farms (Formerly Whitewood Condos)	MFA	483	Rail Ranch ES	Shivela MS	Vista Murrieta HS
10	Lemon & Adams	SFD	12	Murrieta ES	Thompson MS	Murrieta Valley HS
11	Alexian Murrieta Hot Springs (Formerly Bel Air Apartments)	MFA	196	Alta Murrieta ES	Warm Springs MS	Vista Murrieta HS
12	Los Alamos Community - Neighborhood 2	MFA	225	Avaxat ES	Shivela MS	Murrieta Mesa HS
13	The Ranch/Wolff Company	MFA	324	Murrieta ES	Thompson MS	Murrieta Valley HS
14	Del Haven Apartments	MFA	117	Daniel N Buchanan ES	Warm Springs MS	Vista Murrieta HS
15	Nutmeg Apartments	MFA	210	Murrieta ES	Thompson MS	Murrieta Valley HS
16	Jefferson Apartments	MFA	160	Murrieta ES	Thompson MS	Murrieta Valley HS
17	Oak View Ranch	MFA	119	Murrieta ES	Thompson MS	Murrieta Valley HS
18	Monomos Apartments	MFA	139	Avaxat ES	Shivela MS	Murrieta Mesa HS
19	Vista Heights (formerly Vista Murrieta Apartments)	MFA	214	Avaxat ES	Shivela MS	Murrieta Mesa HS
20	Rancon MHS 20 LLC	MFA	151	Daniel N Buchanan ES	Warm Springs MS	Vista Murrieta HS
21	Jefferson 68	MFA	68	Murrieta ES	Thompson MS	Murrieta Valley HS
22	Sandstone Valley Apartments	MFA	95	Murrieta ES	Thompson MS	Murrieta Valley HS
23	LMC Murrieta Multi-Family Apartments	MFA	389	Murrieta ES	Thompson MS	Murrieta Valley HS
24	Kensington Apartments	MFA	126	Murrieta ES	Thompson MS	Murrieta Valley HS
25	The Terraces	MFA	899	Avaxat ES	Shivela MS	Murrieta Mesa HS
26	Gieron Ranch	MFA	107	Murrieta ES	Thompson MS	Murrieta Valley HS
27	Jefferson Murrieta Hot Springs Apartments	MFA	851	Murrieta ES	Thompson MS	Murrieta Valley HS
28	Alliance Vista Murrieta at Los Alamos	MFA	120	Avaxat ES	Shivela MS	Murrieta Mesa HS
29	Calle Fortuna Townhomes	MFA	72	Daniel N Buchanan ES	Warm Springs MS	Vista Murrieta HS
30	Downtown Marketplace Apartments	MFA	39	Avaxat ES	Shivela MS	Murrieta Mesa HS
31	Sun Stone	MFA	154	Lisa J Mails ES	Dorothy McElhinney MS	Vista Murrieta HS
32	Viscar Terrace Apartments	MFA	172	Avaxat ES	Shivela MS	Murrieta Mesa HS
Total SFD			1,349			
Total MFA			5,455			

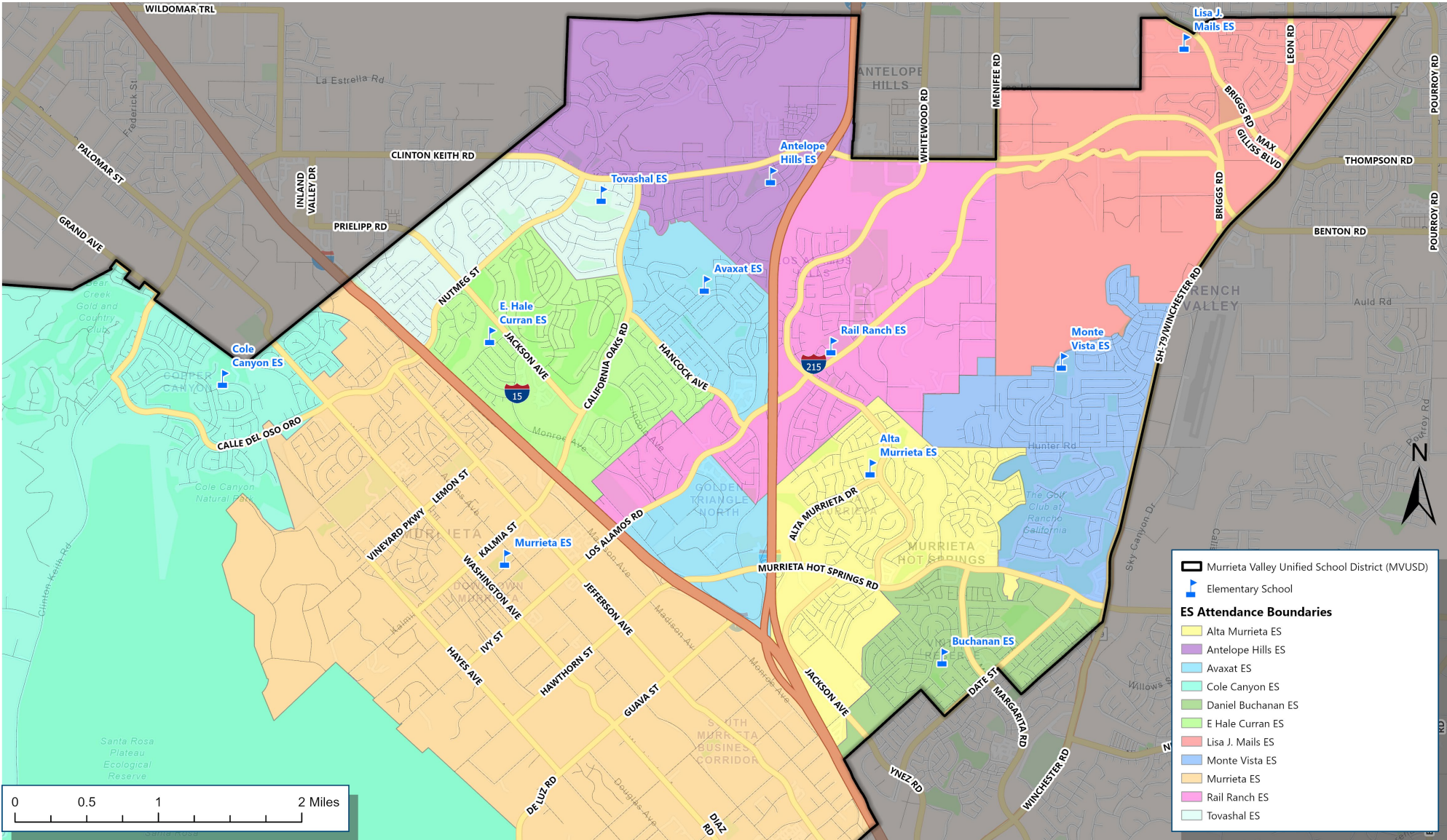
Enrollment Projections



Enrollment Projections by Grade

Grade Level	2023/24	2024/25	2025/26	2026/27	2027/28	2028/29	2029/30	2030/31	2031/32	2032/33	2033/34
Transitional Kindergarten	623	817	866	895	918	970	976	979	980	982	982
Kindergarten	1,215	1,201	1,243	1,350	1,400	1,421	1,489	1,493	1,500	1,503	1,507
1 st Grade	1,263	1,333	1,347	1,415	1,523	1,551	1,554	1,619	1,624	1,632	1,633
2 nd Grade	1,483	1,311	1,412	1,450	1,511	1,593	1,603	1,598	1,664	1,668	1,675
3 rd Grade	1,429	1,512	1,369	1,494	1,526	1,561	1,627	1,628	1,623	1,690	1,693
4 th Grade	1,512	1,439	1,550	1,431	1,549	1,554	1,571	1,629	1,630	1,626	1,692
5 th Grade	1,565	1,546	1,505	1,639	1,510	1,606	1,592	1,602	1,660	1,661	1,655
6 th Grade	1,666	1,649	1,662	1,647	1,772	1,614	1,692	1,670	1,680	1,740	1,740
7 th Grade	1,777	1,715	1,731	1,769	1,743	1,840	1,662	1,732	1,710	1,720	1,777
8 th Grade	1,700	1,776	1,746	1,785	1,813	1,760	1,837	1,649	1,719	1,697	1,705
9 th Grade	1,962	1,956	2,067	2,056	2,089	2,094	2,019	2,094	1,893	1,969	1,943
10 th Grade	2,017	1,946	1,969	2,101	2,082	2,089	2,076	1,994	2,068	1,870	1,944
11 th Grade	1,944	1,965	1,926	1,971	2,090	2,047	2,035	2,015	1,937	2,008	1,817
12 th Grade	2,084	1,982	2,030	2,014	2,048	2,139	2,079	2,060	2,040	1,964	2,031
Total	22,240	22,148	22,424	23,016	23,574	23,839	23,812	23,761	23,729	23,731	23,795
Annual Growth/(Decline)	N/A	(92)	276	592	558	264	(27)	(50)	(32)	3	63
Cumulative Growth/(Decline)	N/A	(92)	184	776	1,334	1,599	1,572	1,521	1,489	1,491	1,555

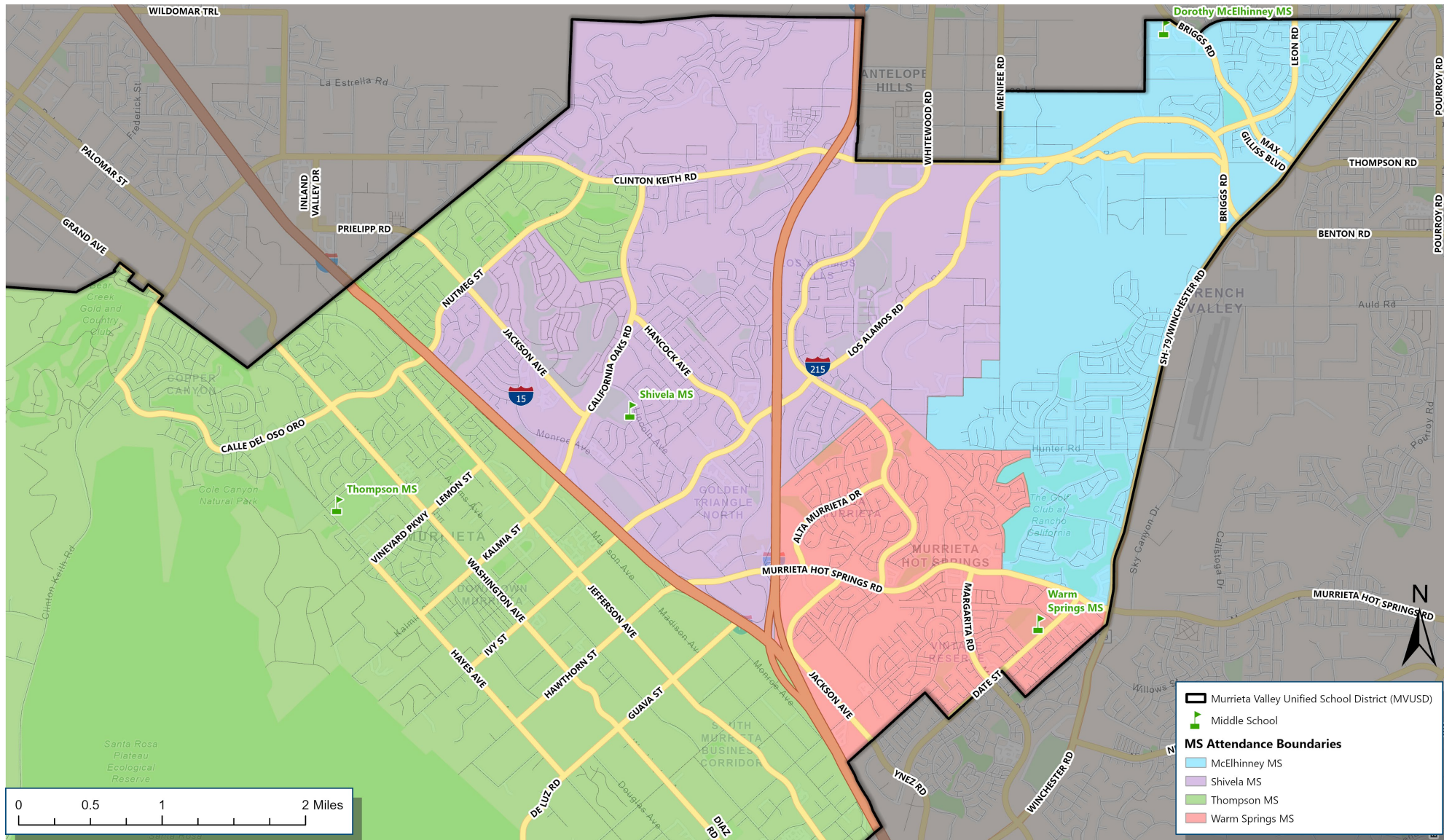
Elementary School Attendance Boundaries



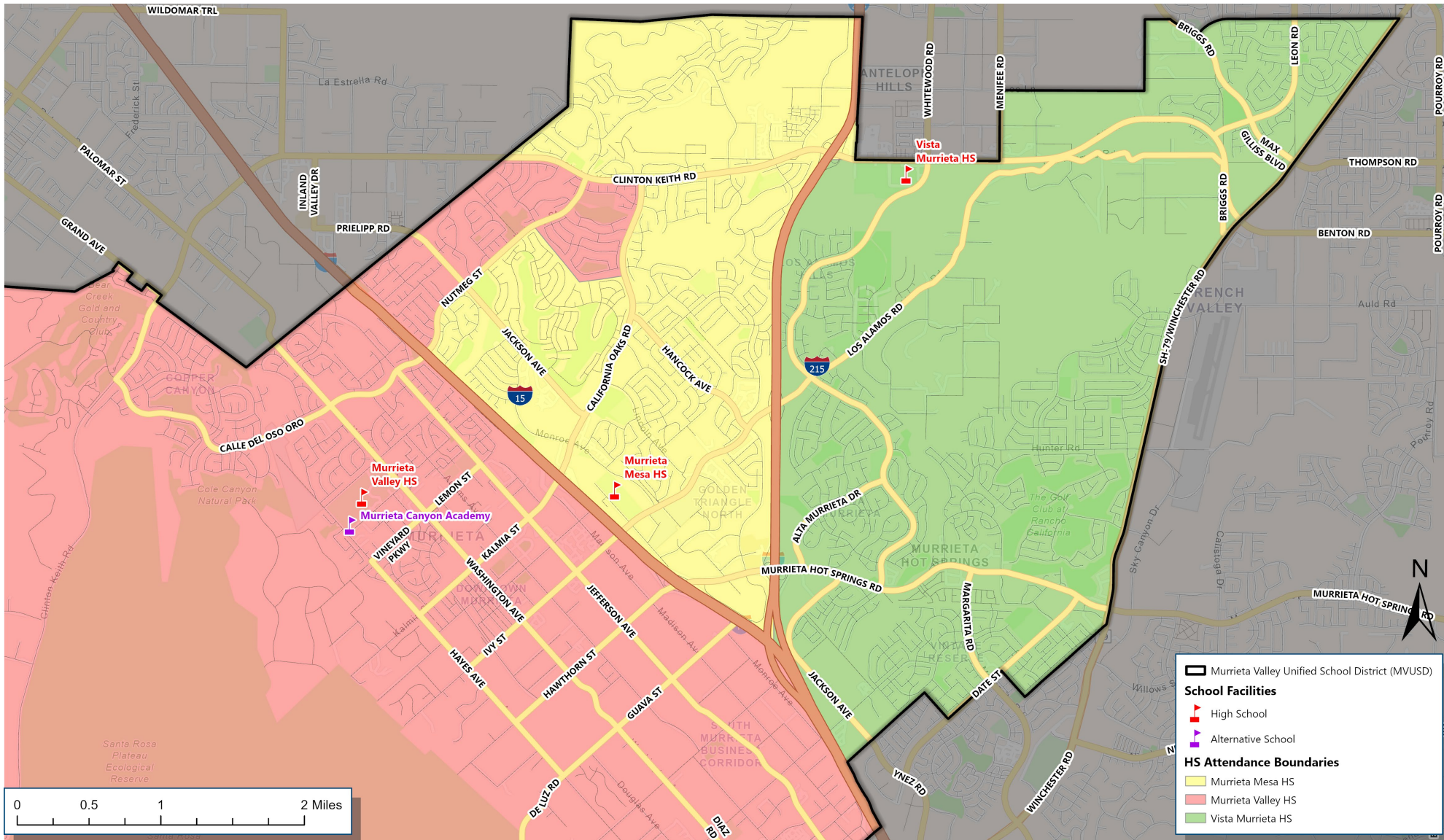
Projected Utilization by Elementary School

School	Facilities Capacity	2023/24 Enrollment	2023/24 Utilization	2023/24 Enrollment	2023/24 Utilization
Alta Murrieta ES	1,245	898	72%	960	77%
Antelope Hills ES	1,022	843	82%	961	94%
Avaxat ES	970	682	70%	1,010	104%
Cole Canyon ES	1,158	1,062	92%	1,203	104%
Daniel N. Buchanan ES	1,372	843	61%	908	66%
E. Hale Curran ES	889	593	67%	662	74%
Lisa J. Mails ES	1,067	975	91%	1,140	107%
Monte Vista ES	1,142	802	70%	751	66%
Murrieta ES	1,030	912	89%	1,732	168%
Rail Ranch ES	922	639	69%	603	65%
Tovashal ES	913	767	84%	821	90%
Learn@Home TK-8	N/A	43	N/A	50	N/A
Learn@Home Virtual	N/A	31	N/A	35	N/A
ES Total	11,730	9,090	77%	10,837	92%

Middle School Attendance Boundaries



High School Attendance Boundaries



Projected Utilization by Middle School & High School

School	Facilities Capacity	2023/24 Enrollment	2023/24 Utilization	2023/34 Enrollment	2023/34 Utilization
Dorothy McElhinney MS	1,824	1,443	79%	1,331	73%
Shivela MS	1,592	1,205	76%	1,186	75%
Thompson MS	1,794	1,595	89%	1,869	104%
Warm Springs MS	1,478	817	55%	751	51%
Learn@Home TK-8	N/A	83	N/A	85	N/A
MS Total	6,688	5,143	77%	5,222	78%
Murrieta Mesa HS	2,273	2,227	98%	2,088	92%
Murrieta Valley HS	2,919	2,178	75%	2,488	85%
Vista Murrieta HS	3,302	3,400	103%	2,965	90%
Murrieta Canyon Academy	N/A	202	N/A	195	N/A
HS Total	8,494	8,070	94%	7,736	91%

Live/Attend Analysis (2023/24)

		School of Attendance																							
Attendance Boundary		Alta Murrieta ES	Antelope Hills ES	Avaxat ES	Cole Canyon ES	Daniel N Buchanan ES	E. Hale Curran ES	Lisa J. Mails ES	Monte Vista ES	Murrieta ES	Rail Ranch ES	Tovashal ES	Learn@Home Virtual	Learn@Home TK-8	Dorothy McElhinney MS	Shivela MS	Thompson MS	Warm Springs MS	Murrieta Canyon Academy	Murrieta Mesa HS	Murrieta Valley HS	Vista Murrieta HS	Total Boundary Enrollment	% of Boundary Students Attending Boundary School	% of Boundary Students Not Attending Boundary School
Elementary School	Alta Murrieta ES	678	3	5	3	25	3	4	2	4	5	2	3	9									746	90.9%	9.1%
	Antelope Hills ES	2	614	6	2	2	4	11	3	6	1	45	2	2									700	87.7%	12.3%
	Avaxat ES	30	25	528	6	6	22	7	3	17	22	50	1	4									721	73.2%	26.8%
	Cole Canyon ES	1	3	6	859	1	4	1	2	4	1	6		3									891	96.4%	3.6%
	Daniel N Buchanan ES	16	5	7	4	702	4	14	8	5	6	2	4	7									784	89.5%	10.5%
	E Hale Curran ES	19	15	27	6	7	443	5		15	10	35	4	1									587	75.5%	24.5%
	Lisa J Mails ES	3	3	3		4		618			3		3	2									639	96.7%	3.3%
	Monte Vista ES	28	11	8		31	3	47	724	5	7	4	5	2									875	82.7%	17.3%
	Murrieta ES	9	20	13	87	6	13	7	2	780	6	13	4	4									964	80.9%	19.1%
	Rail Ranch ES	38	31	20	3	6	6	12	5	4	550	9	2	4									690	79.7%	20.3%
Tovashal ES	8	7	6	7	2	35	9	2	7	1	523	1										608	86.0%	14.0%	
IDT (TK-5)	66	106	53	85	51	56	240	51	65	27	78	2	5									885	N/A	N/A	
Middle School	McElhinney MS												10	850	9	5	28						902	94.2%	5.8%
	Shivela MS												29	194	1,042	92	49						1,406	74.1%	25.9%
	Thompson MS												20	19	46	1,365	10						1,460	93.5%	6.5%
	Warm Springs MS												10	47	20	16	680						773	88.0%	12.0%
IDT (6-8)												14	333	88	117	50						602	N/A	N/A	
High School	Murrieta Mesa HS																		51	1,382	120	218	1,771	78.0%	22.0%
	Murrieta Valley HS																		56	223	1,750	75	2,104	83.2%	16.8%
	Vista Murrieta HS																		76	257	60	2,453	2,846	86.2%	13.8%
	IDT (9-12)																		19	365	248	654	1,286	N/A	N/A
Total School Enrollment	898	843	682	1,062	843	593	975	802	912	639	767	31	126	1,443	1,205	1,595	817	202	2,227	2,178	3,400	22,240	85.0%	15.0%	
% of Enrollment from Attendance Boundary	75.5%	72.8%	77.4%	80.9%	83.3%	74.7%	63.4%	90.3%	85.5%	86.1%	68.2%	N/A	N/A	58.9%	86.5%	85.6%	83.2%	N/A	62.1%	80.3%	72.1%	74.4%			
% of Enrollment from Other Boundaries	17.1%	14.6%	14.8%	11.1%	10.7%	15.9%	12.0%	3.4%	7.3%	9.7%	21.6%	93.5%	84.9%	18.0%	6.2%	7.1%	10.6%	90.6%	21.6%	8.3%	8.6%	13.2%			
% of Enrollment from Other Districts (IDT)	7.3%	12.6%	7.8%	8.0%	6.0%	9.4%	24.6%	6.4%	7.1%	4.2%	10.2%	6.5%	15.1%	23.1%	7.3%	7.3%	6.1%	9.4%	16.4%	11.4%	19.2%	12.5%			

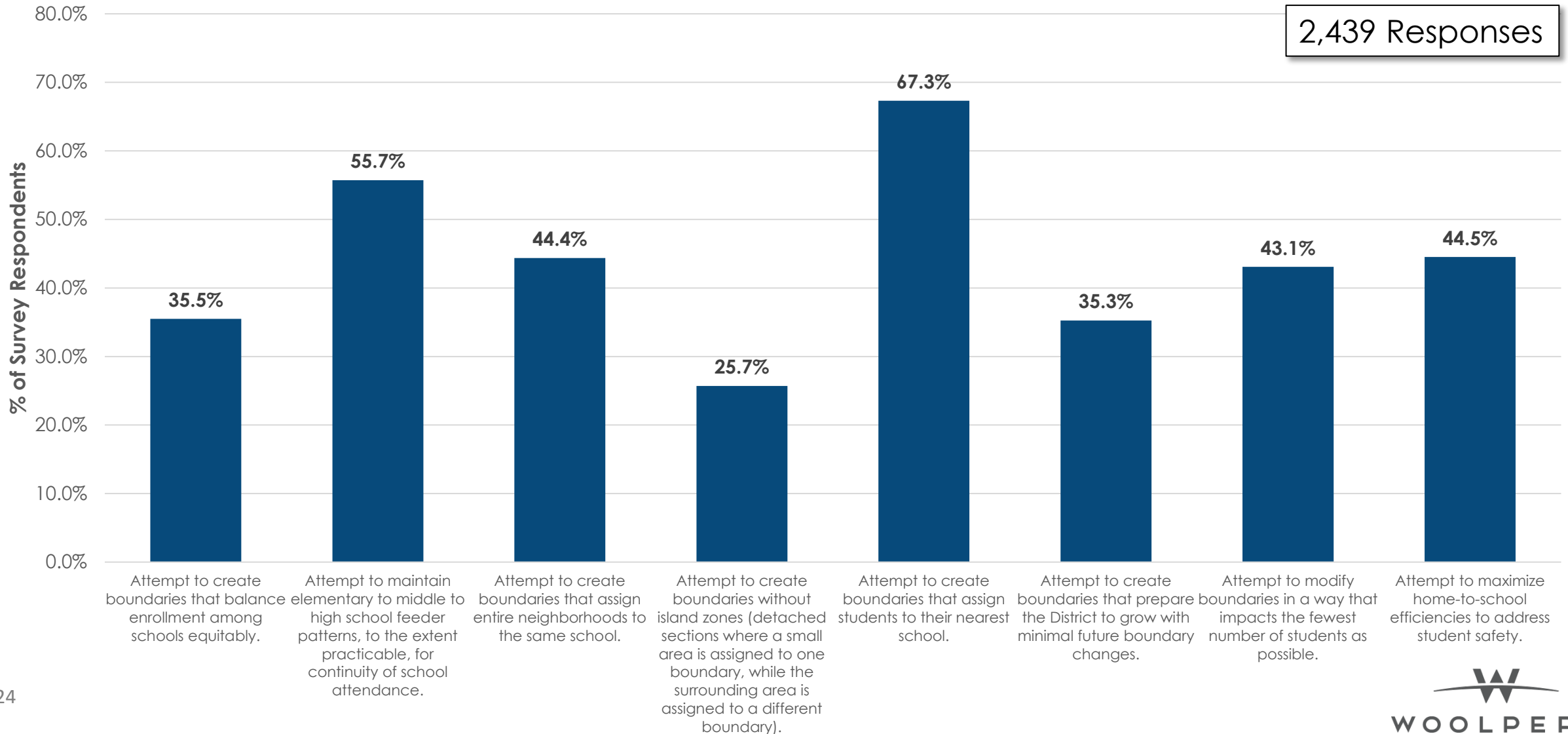
The live/attend analysis identifies where students reside and compares it to the school in which they attend. The columns illustrate the school of attendance, and the rows illustrate the attendance boundary. The chart can be read both vertically and horizontally.

Criteria Survey Results

Criteria Survey Results

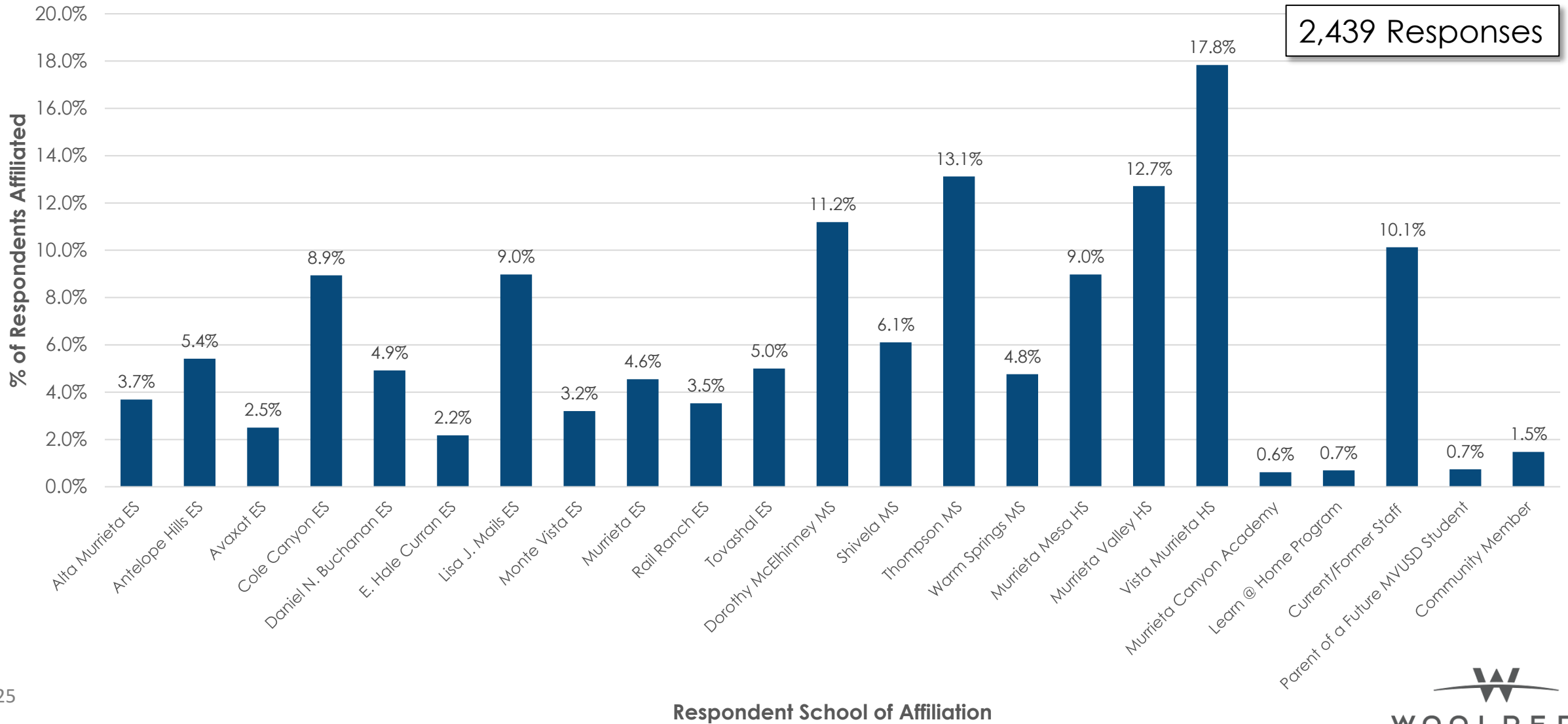
Survey Question 1 – Pick your top 4 criteria

2,439 Responses



Criteria Survey Results

School Affiliation



Survey Comments

Closest School – “Prioritize attendance areas that keep students close to home...”

- 9.6% of respondents gave comments related to closest school assignment

Grandfathering – “Consider a grandfather clause of some sort that leaves students where they are currently enrolled...”

- 9.4% of respondents gave comments related to grandfathering

Transportation – “Walkability and safety for students. If walking, not crossing busy intersections to get to school.”

- 8.7% of respondents gave comments related to transportation, walkability, and traffic congestion

Balance/Equity– “Ensure that boundaries provide equitable access to quality education for all students...”

- 4.8% of respondents gave comments related to equitability amongst schools (enrollment, resources, etc.)

Transfers – “perhaps Murrieta should decrease the number of students it allows from other Districts if it is experiencing overcrowding...”

- 4.3% of respondents gave comments related to student transfers

Survey Comments

Overcrowding– “Keeping student numbers within reason because this overcrowding is out of hand and dangerous.”

- 4.1% of respondents gave comments related to school overcrowding

Feeder Patterns – “Keeping students together from elementary to HS would be ideal.”

- 3.1% of respondents gave comments related to feeder patterns

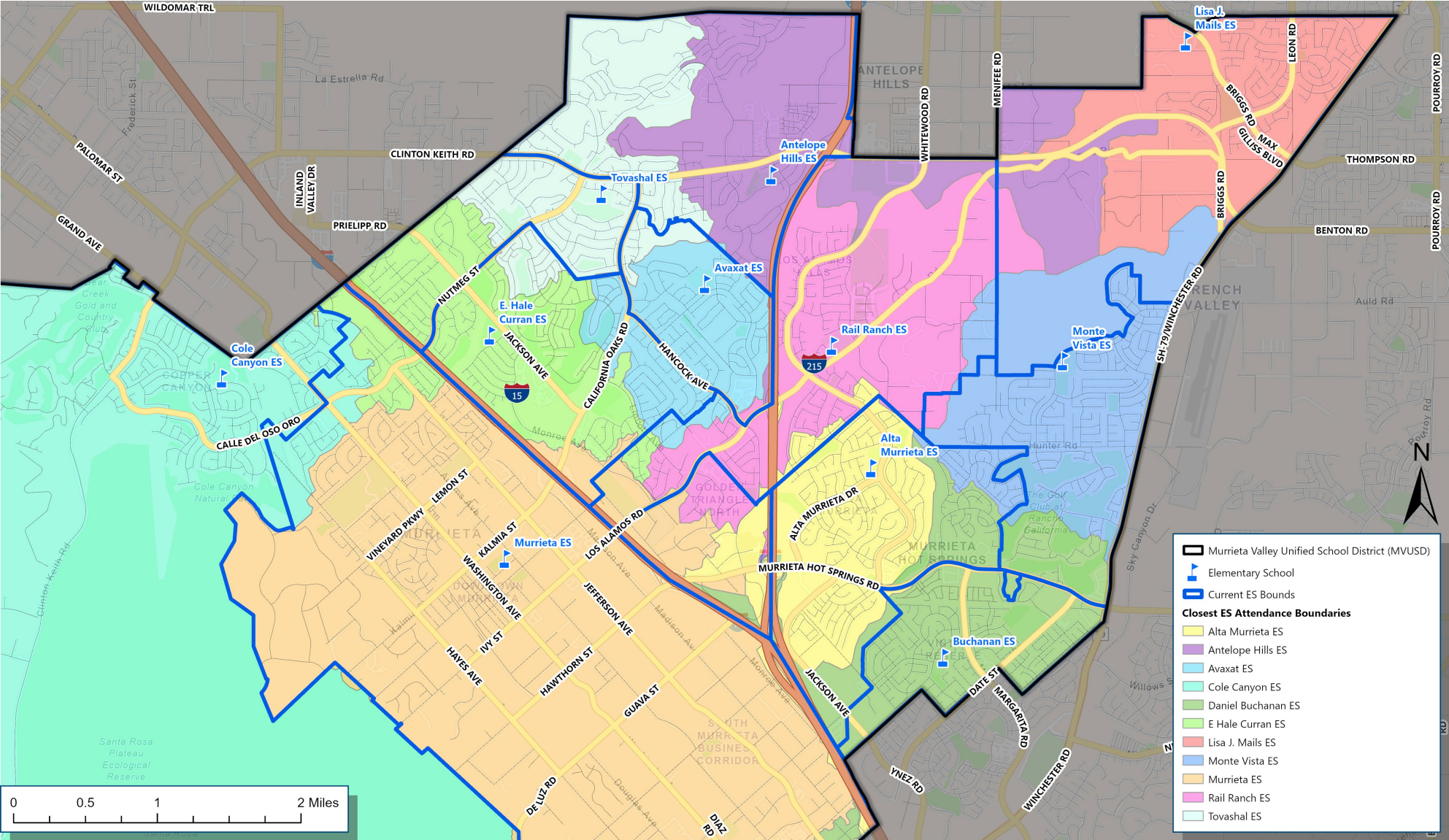
New Schools – “Please allow a new school to be built in order to accommodate all the students...”

- 3.1% of respondents gave comments related to building new school facilities

District Boundary – “Correlating the city we live in with the school district, we live in Murrieta therefore should go to Murrieta schools not Perris or Menifee school districts.”

- 2.8% of respondents gave comments related to the district boundary

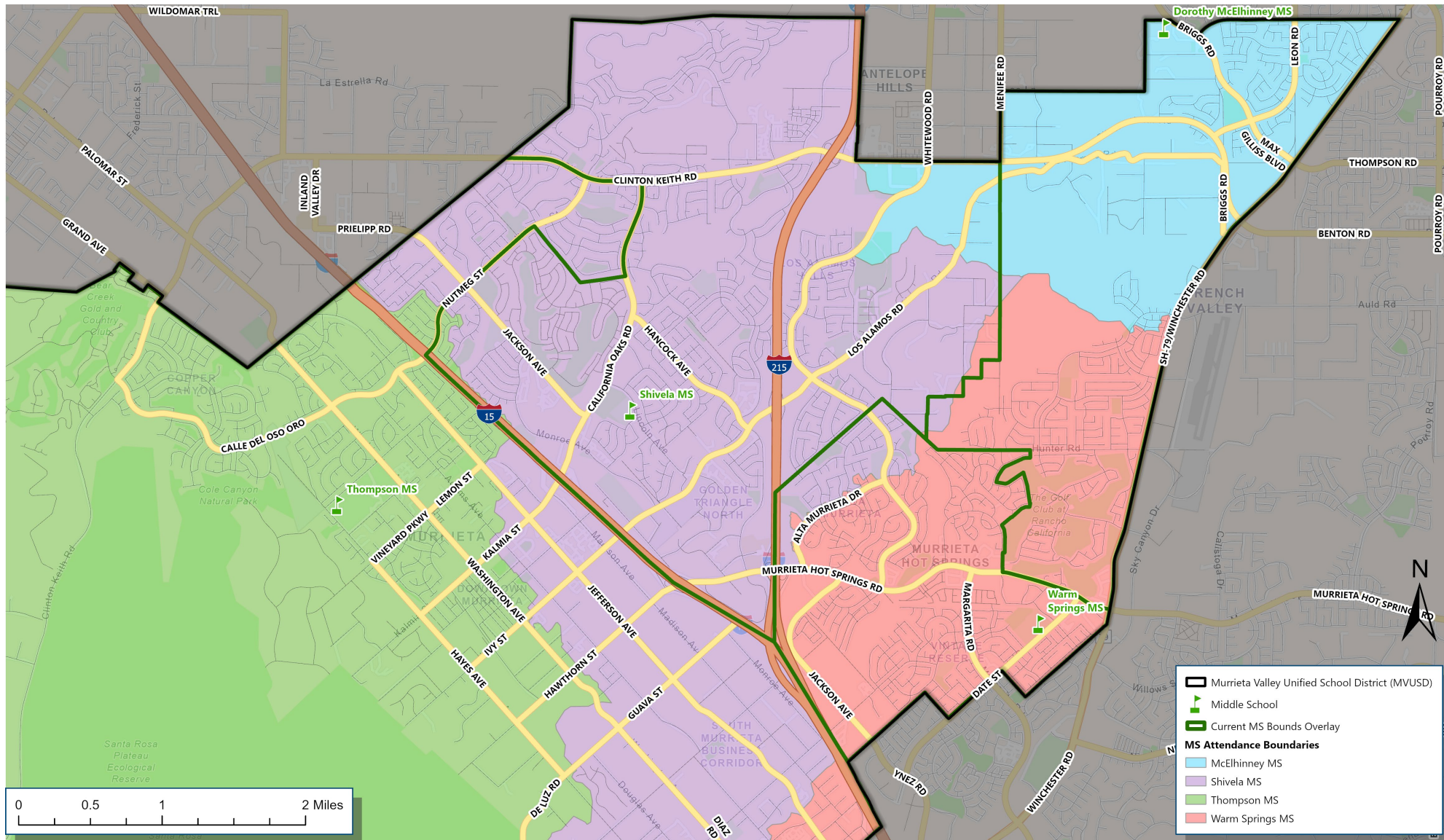
Closest Elementary School Example



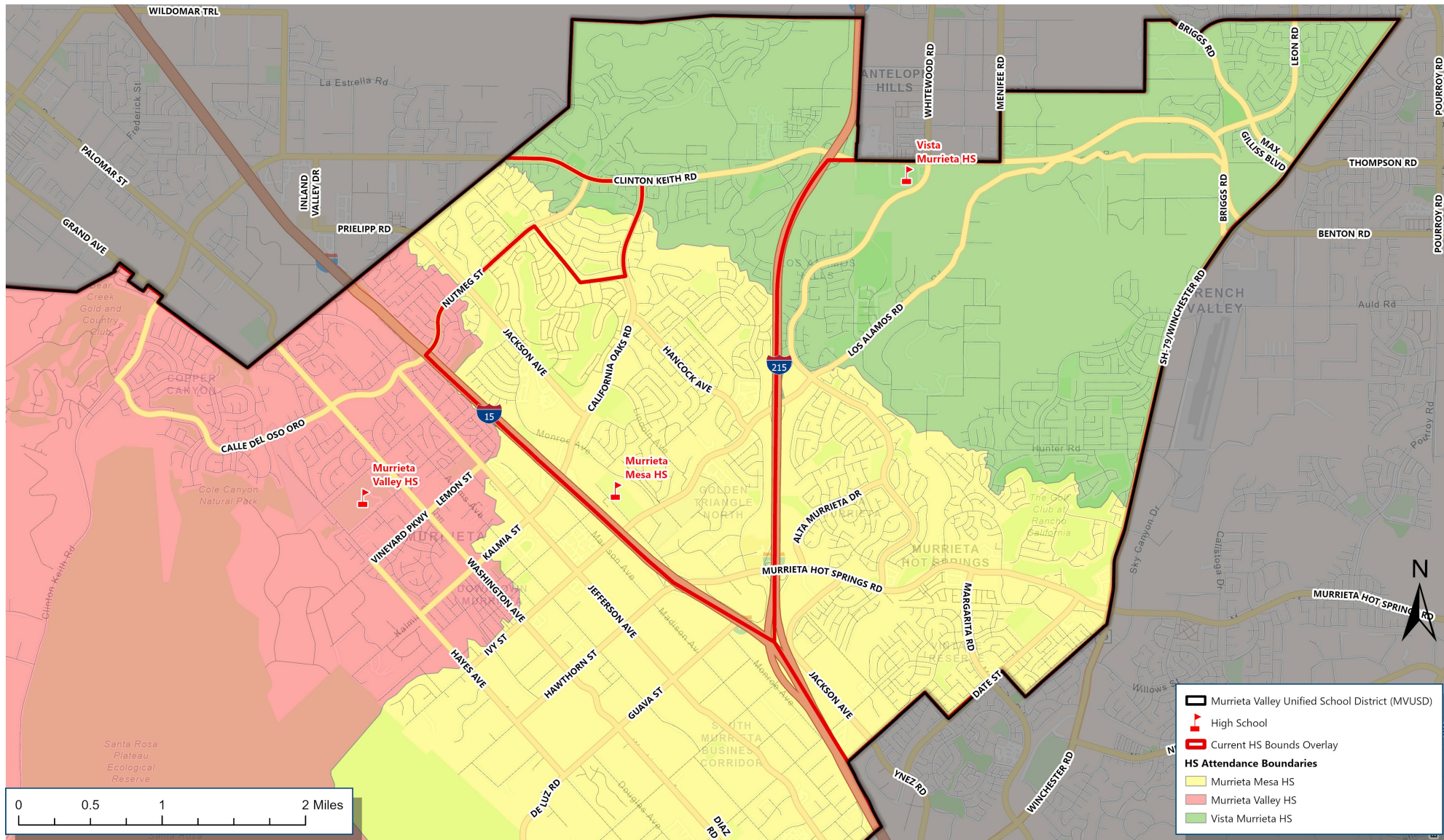
Closest Elementary School Example

School	Facilities Capacity	2023/24 Actual Enrollment	2023/24 Utilization	2023/24 Closest ES Students	2023/24 Out of District Enrollment	2023/24 Total Enrollment	2023/24 Closest ES Utilization
Alta Murrieta ES	1,245	898	72%	772	66	838	67%
Antelope Hills ES	1,022	843	82%	517	106	623	61%
Avaxat ES	970	682	70%	680	53	733	76%
Cole Canyon ES	1,158	1,062	92%	956	51	1,007	87%
Daniel N. Buchanan ES	1,372	843	61%	930	85	1,015	74%
E. Hale Curran ES	889	593	67%	797	56	853	96%
Lisa J. Mails ES	1,067	975	91%	630	242	872	82%
Monte Vista ES	1,142	802	70%	771	51	822	72%
Murrieta ES	1,030	912	89%	865	65	930	90%
Rail Ranch ES	922	639	69%	660	27	687	75%
Tovashal ES	913	767	84%	625	78	703	77%
Learn@Home TK-8	N/A	43	N/A	N/A	5	5	N/A
Learn@Home Virtual	N/A	31	N/A	N/A	2	2	N/A
Total	11,730	9,090	77%	8,203	887	9,090	77%

Closest Middle School Example



Closest High School Example



Closest Middle & High School Example

School	Facilities Capacity	2023/24 Actual Enrollment	2023/24 Utilization	2023/24 Closest ES Students	2023/24 Out of District Enrollment	2023/24 Total Enrollment	2023/24 Closest ES Utilization
Dorothy McElhinney MS	1,824	1,443	79%	437	334	771	42%
Shivela MS	1,592	1,205	76%	1,938	88	2,026	127%
Thompson MS	1,794	1,595	89%	989	117	1,106	62%
Warm Springs MS	1,478	817	55%	1,176	50	1,226	83%
Learn@Home TK-8	N/A	83	N/A	N/A	14	14	N/A
MS Total	6,688	5,143	77%	4,540	603	5,143	77%
Murrieta Mesa HS	2,273	2,227	98%	3,070	365	3,435	151%
Murrieta Valley HS	2,919	2,178	75%	1,571	248	1,819	62%
Vista Murrieta HS	3,302	3,400	103%	2,080	654	2,734	83%
Murrieta Canyon Academy	N/A	202	N/A	N/A	19	19	N/A
HS Total	8,494	8,007	94%	6,721	1,286	8,007	94%

Q & A