



**MIDDLETOWN CITY SCHOOLS**  
**K-6 REDISTRICTING: RECOMMENDATION**  
JANUARY 2025



► K - 6 REDISTRICTING

**Data Review  
& Analysis**

**Boundary  
Planning  
Criteria**

**Scenario  
Creation**

**Community  
Outreach**

**Scenario  
Revisions**

**Board  
Discussion &  
Action**

## ► K - 6 REDISTRICTING PROCESS

### Data Review & Analysis

- **Enrollment Projections**
  - Cohort Survival Method
  - Census & American Community Survey datasets
- **Housing Developments**
- **Capacity Analysis**
- **Project website:** to contain all process-related presentations, surveys, reports, and other materials

Boundary  
Planning  
Criteria

Creation

Community  
Outreach

Scenario  
Revisions

Board  
Discussion &  
Action

► K - 6 REDISTRICTING  
PROCESS



## Boundary Planning Criteria

- **Criteria to be used as planning parameters or guidelines when creating boundary scenarios**
- **Community feedback opportunity, results have been compiled into a report (available on project website)**

Demographic  
Studies  
Data Review  
Analysis

Scenario  
Creation

Community  
Feedback

Scenario  
Review

Board  
Discussion &  
Action

## ► K - 6 REDISTRICTING PROCESS

Demographic  
Studies  
Data Review &  
Analysis

Boundary  
Planning  
Criteria

**Scenario  
Creation**

- **Boundary scenarios were created using the stakeholder feedback regarding criteria as planning parameters**
- **Scenarios are intended to encourage feedback and generate conversation**
- **Scenarios will have different levels of effectiveness, longevity, and impact**

Board  
Discussion &

► K - 6 REDISTRICTING  
PROCESS

- **Boundary scenarios presented to community for feedback**
- **Ensure stakeholders understand process & reasoning behind boundary adjustments**
- **Community feedback will be compiled into a report**



The diagram illustrates a six-step process for K-6 redistricting, presented as a sequence of rounded rectangular boxes within a large, light-gray arrow pointing to the right. The steps are: 1. Studies Data Review & Analysis, 2. Boundary Criteria, 3. Scenario Creation, 4. Community Outreach (highlighted in a dark purple box), 5. Scenario Revisions, and 6. Board Discussion & Action.

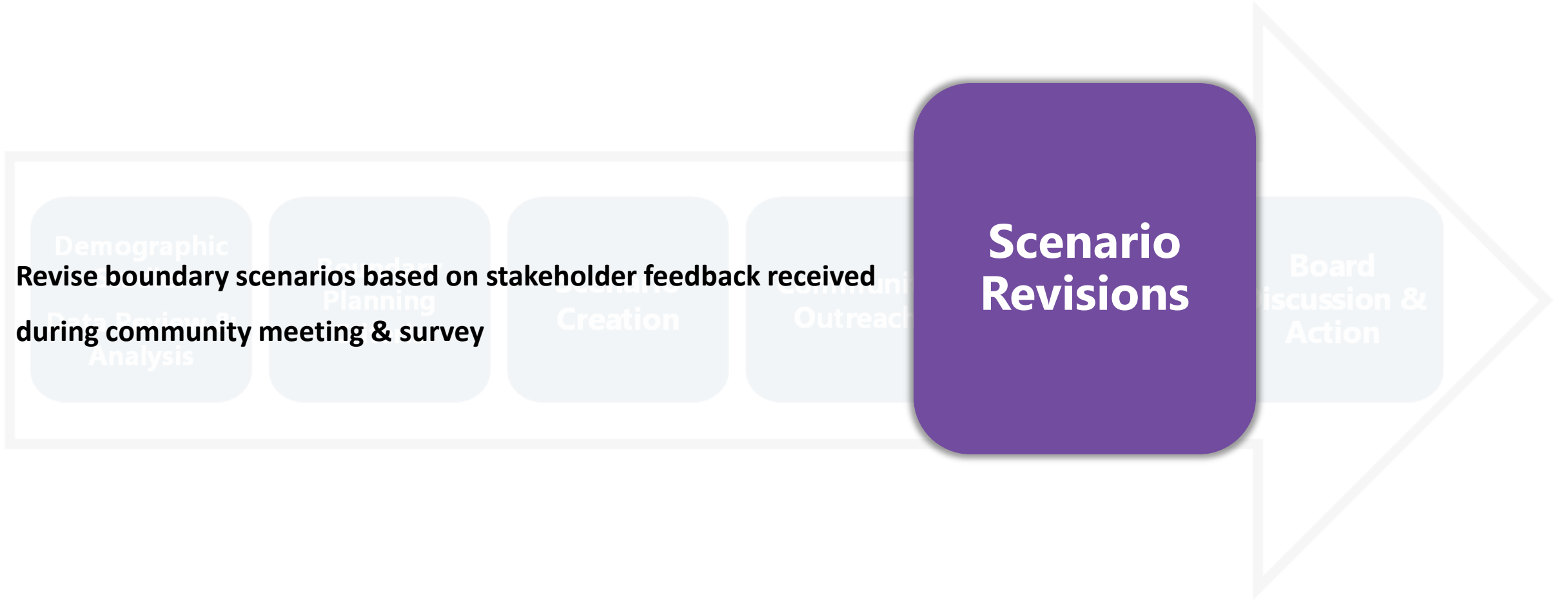
## Community Outreach

Scenario Revisions

Board Discussion & Action

▶ **K - 6 REDISTRICTING**  
**PROCESS**

- **Revise boundary scenarios based on stakeholder feedback received during community meeting & survey**



► K-6 REDISTRICTING  
PROCESS

- **Recommendation to align with boundary planning criteria (as much as possible) & support community feedback**

Demographic  
Analysis

Planning  
Criteria

Scenario  
Creation

Community  
Outreach

Scenario  
Revisions

**Board  
Discussion &  
Action**



► STAKEHOLDER ROLES

**MCS Community**

**Informs the recommendation**

**Guides the Process**

- Provides feedback regarding priorities and boundary options

**Administration Team**

**Makes the recommendation**

**Steers & Promotes the Process**

- Ensures options are meeting District goals

**Board of Education**

**Approves the recommendation**

**Oversees the Process**

- Provides high-level feedback about boundary concepts & options

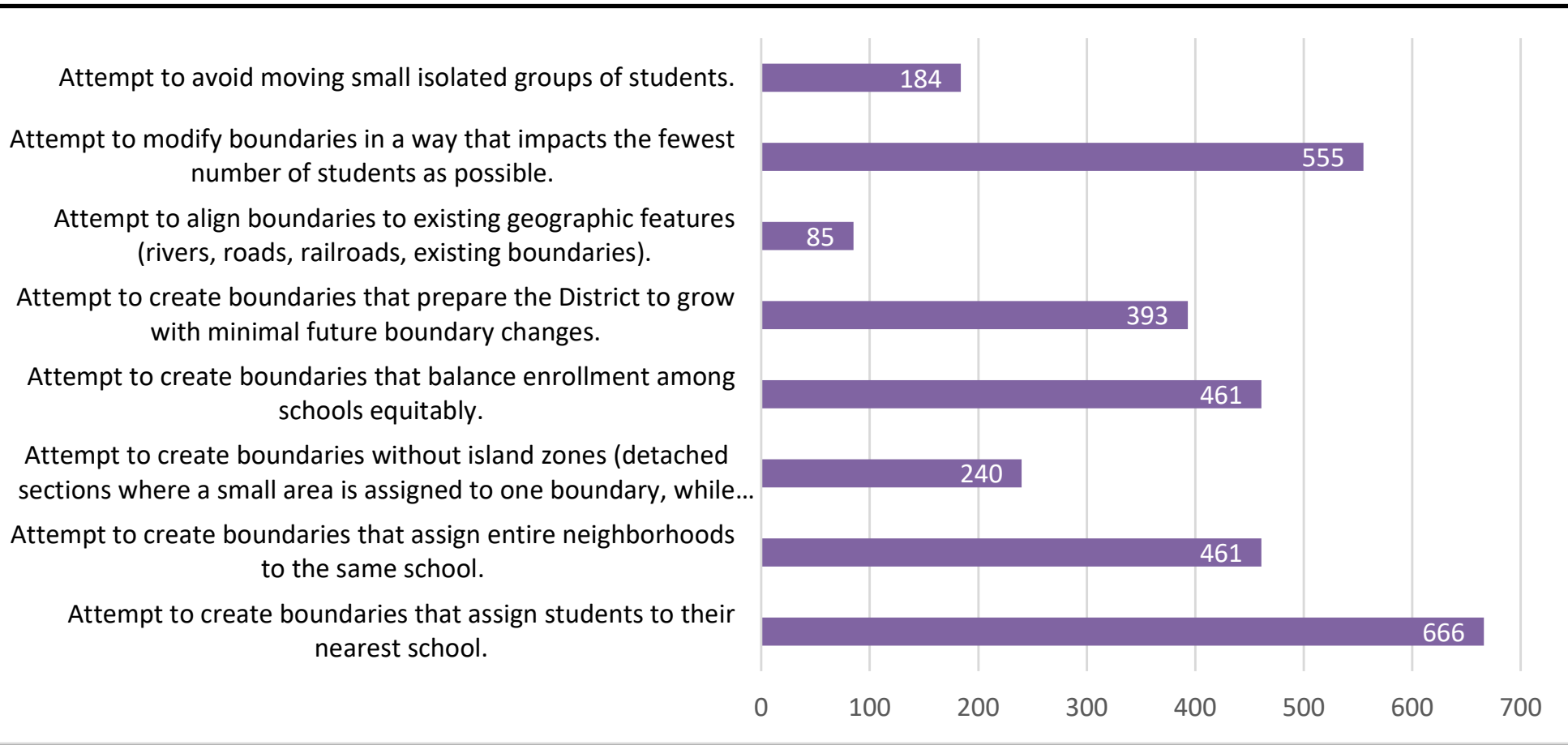
# K-6 REDISTRICTING CRITERIA SURVEY



# ► K - 6 REDISTRICTING GUIDELINES

## RESULTS

**Please select the top 3 factors that are most important to you when redrawing boundaries.**



### Top 4 Criteria:

Attempt to create boundaries that assign students to their nearest school.

Attempt to modify boundaries in a way that impacts the fewest number of students as possible.

Attempt to create boundaries that assign entire neighborhoods to the same school.

Attempt to create boundaries that balance enrollment among schools equitably.

# OPTIONS





## ▶ OPTION 1

### Option Overview

- Central Academy would move to the Highview building.
- ELC classrooms would move to the current Central Academy building.
- The Amanda Elementary boundary is reduced to allow more students to attend a school closer to home.

School	Program Capacity	Live-In Enroll.	Live-In Utilization	Remaining Seats	2029-30 Projected Utilization
Amanda ES	661	310	47%	351	45%
Central Academy at Highview	625	355	57%	270	55%
Creekview ES	583	474	81%	109	79%
Mayfield ES	625	518	83%	107	80%
Miller Ridge ES	583	438	75%	145	73%
Rosa Parks ES	897	716	80%	181	77%
Wildwood ES	625	480	77%	145	74%
<b>TOTAL</b>	<b>4,599</b>	<b>3,291</b>	<b>72%</b>	<b>1,308</b>	<b>69%</b>

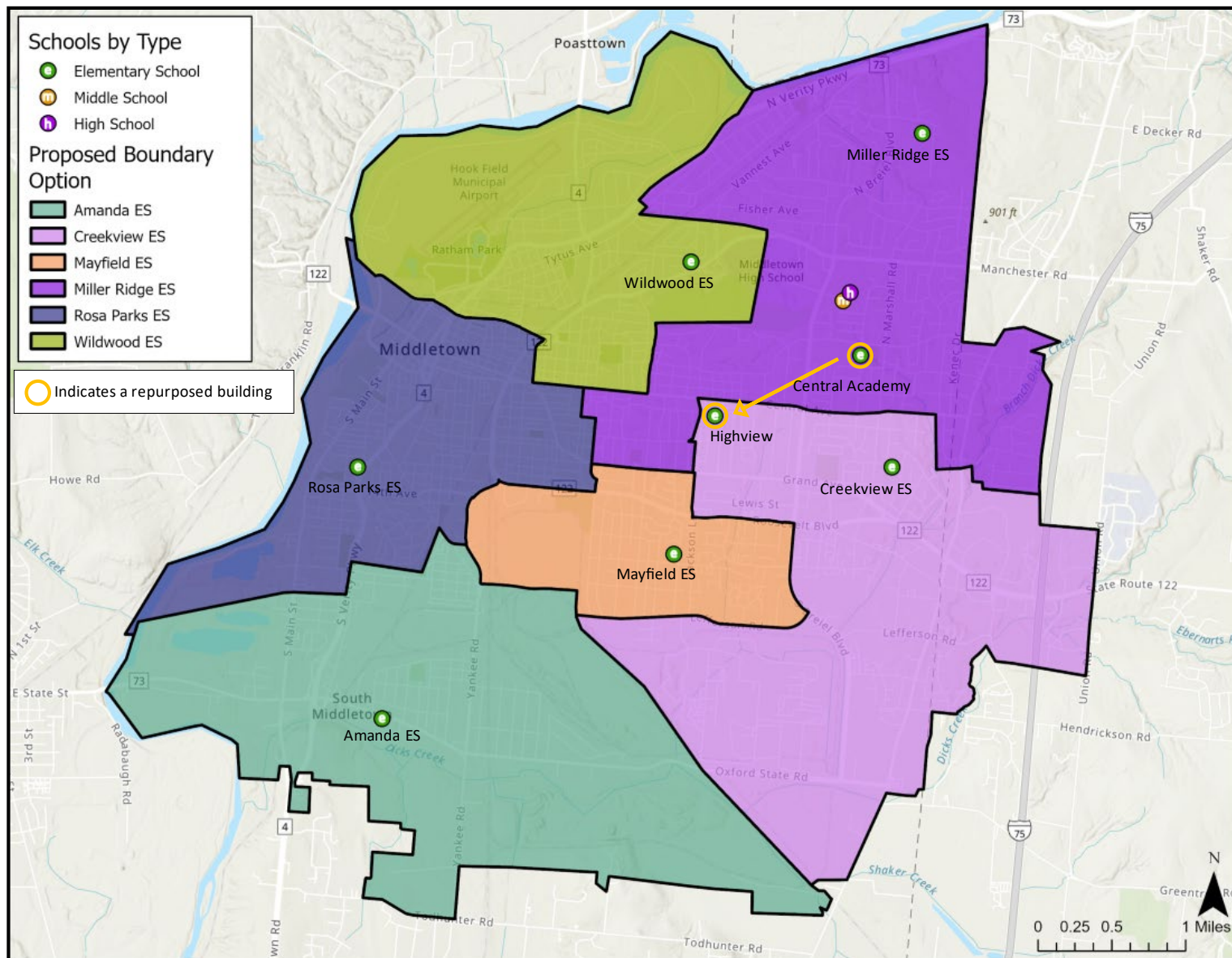
Note: All enrollments represent grades K-6.

Walkability	
1,077	33%

Students Moved (K-6 total)
296

Value does not include Central Academy program moving to Highview

Assigned to Closest School?		
1st Closest	2,388	73%
2nd Closest	644	20%
3rd Closest	126	4%
> 3rd Closest	121	4%



## ▶ OPTION 2

### Option Overview

- Central Academy would move to the Highview building.
- ELC classrooms would move to the current Central Academy building.
- The Amanda Elementary boundary is reduced to allow more students to attend a school closer to home.

School	Program Capacity	Live-In Enroll.	Live-In Utilization	Remaining Seats	2029-30 Projected Utilization
Amanda ES	661	324	49%	337	47%
Central Academy at Highview	625	355	57%	270	55%
Creekview ES	583	465	80%	118	77%
Mayfield ES	625	492	79%	133	76%
Miller Ridge ES	583	418	72%	165	70%
Rosa Parks ES	897	738	82%	159	80%
Wildwood ES	625	499	80%	126	77%
<b>TOTAL</b>	<b>4,599</b>	<b>3,291</b>	<b>72%</b>	<b>1,308</b>	<b>69%</b>

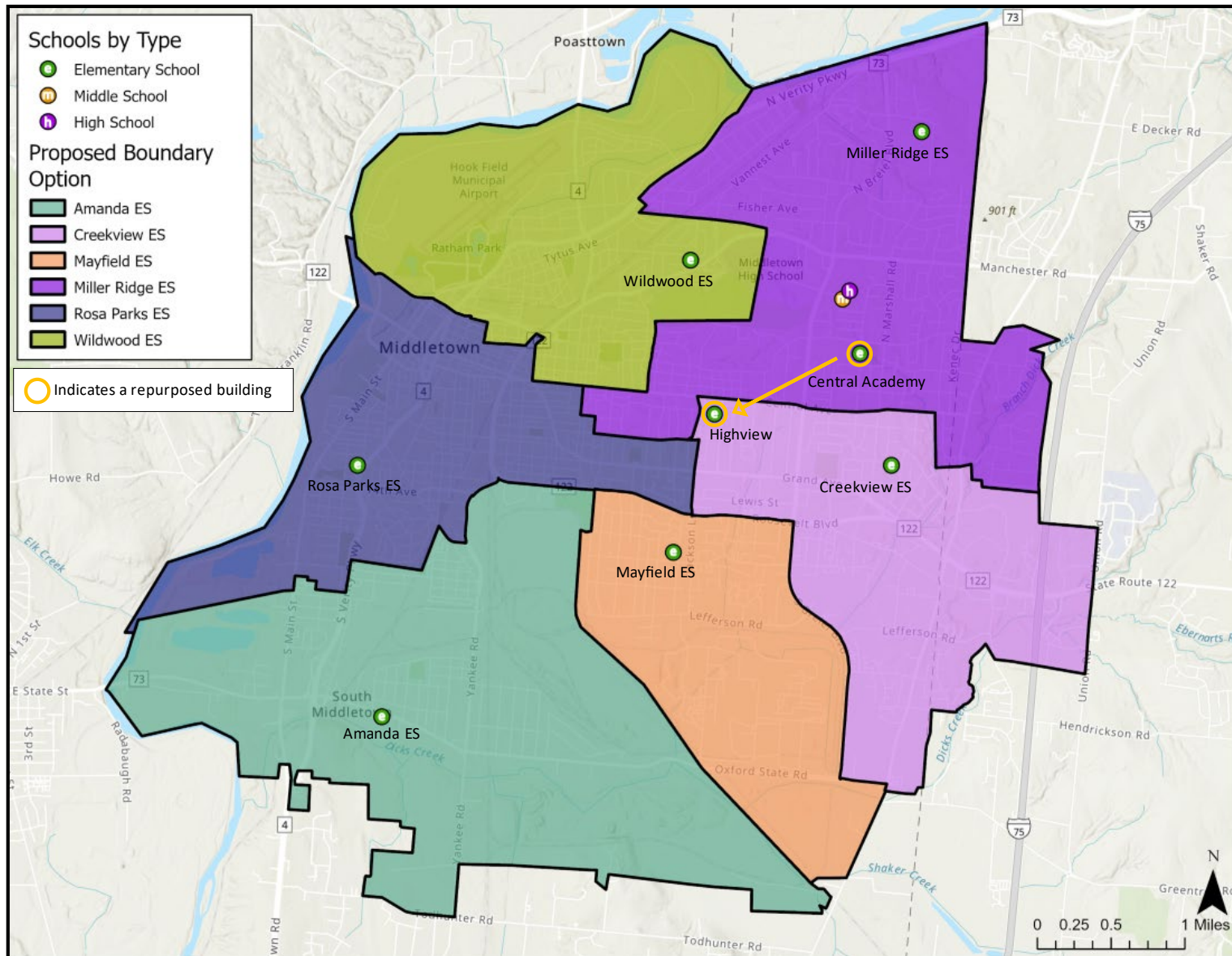
Note: All enrollments represent grades K-6.

Walkability	
1,084	33%

Students Moved (K-6 total)
360

Value does not include Central Academy program moving to Highview

Assigned to Closest School?		
1st Closest	2,352	71%
2nd Closest	648	20%
3rd Closest	133	4%
> 3rd Closest	146	4%



## ▶ OPTION 3

### Option Overview

- Central Academy would move to the Highview building.
- ELC classrooms would move to the current Central Academy building.
- The Amanda Elementary boundary is reduced to allow more students to attend a school closer to home.

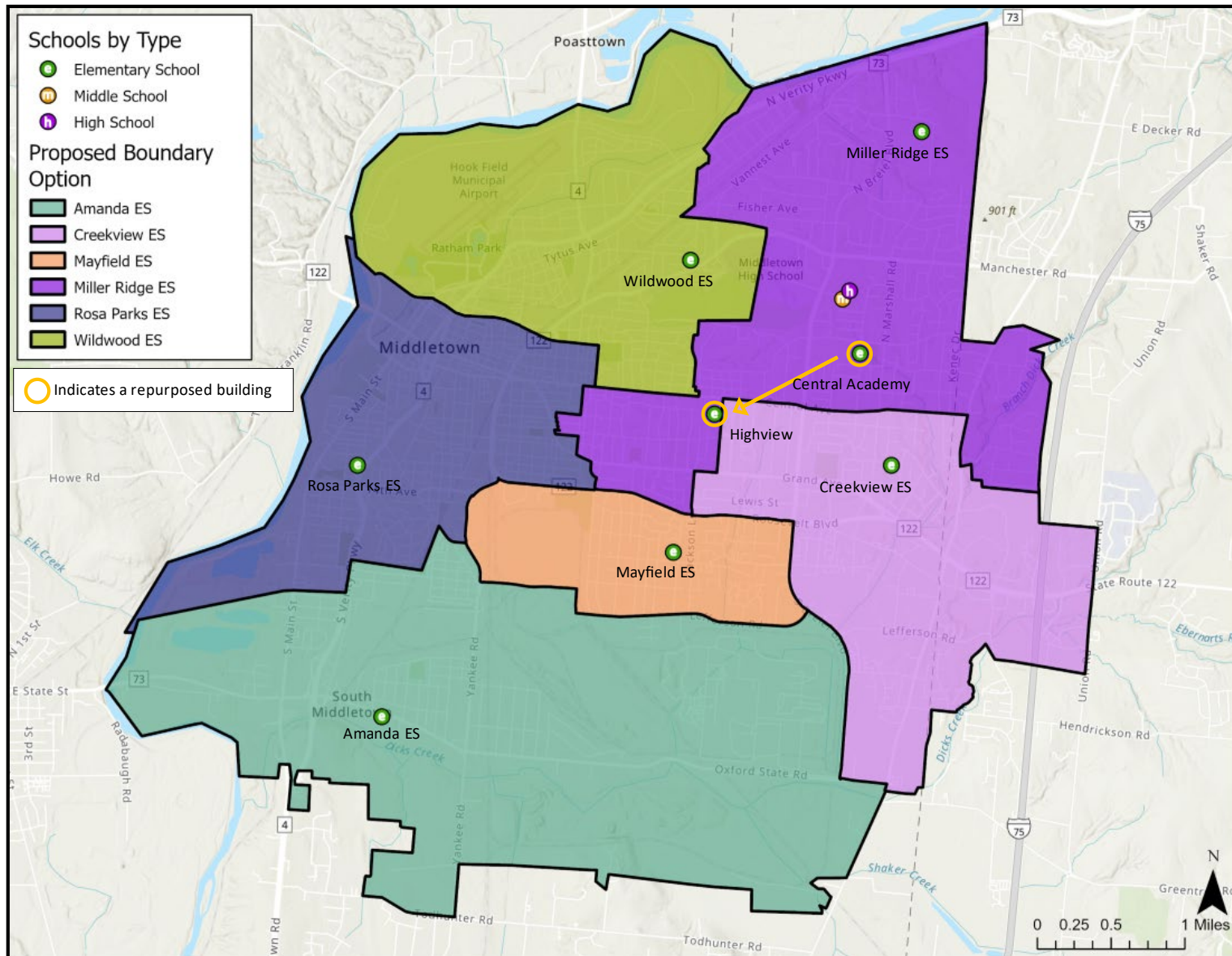
School	Program Capacity	Live-In Enroll.	Live-In Utilization	Remaining Seats	2029-30 Projected Utilization
Amanda ES	661	319	48%	342	47%
Central Academy at Highview	625	355	57%	270	55%
Creekview ES	583	483	83%	100	80%
Mayfield ES	625	483	77%	142	75%
Miller Ridge ES	583	429	74%	154	71%
Rosa Parks ES	897	746	83%	151	81%
Wildwood ES	625	476	76%	149	74%
<b>TOTAL</b>	<b>4,599</b>	<b>3,291</b>	<b>72%</b>	<b>1,308</b>	<b>69%</b>

Walkability	
1,110	34%

Students Moved (K-6 total)
522

Value does not include Central Academy program moving to Highview

Assigned to Closest School?		
1st Closest	2,371	72%
2nd Closest	584	18%
3rd Closest	120	4%
> 3rd Closest	204	6%





## ▶ OPTION 4

### Option Overview

- Central Academy would move to the Highview building.
- ELC classrooms would move to the current Central Academy building.
- The Rosa Parks Elementary boundary remains the same as it is today to reduce the number of students moved.

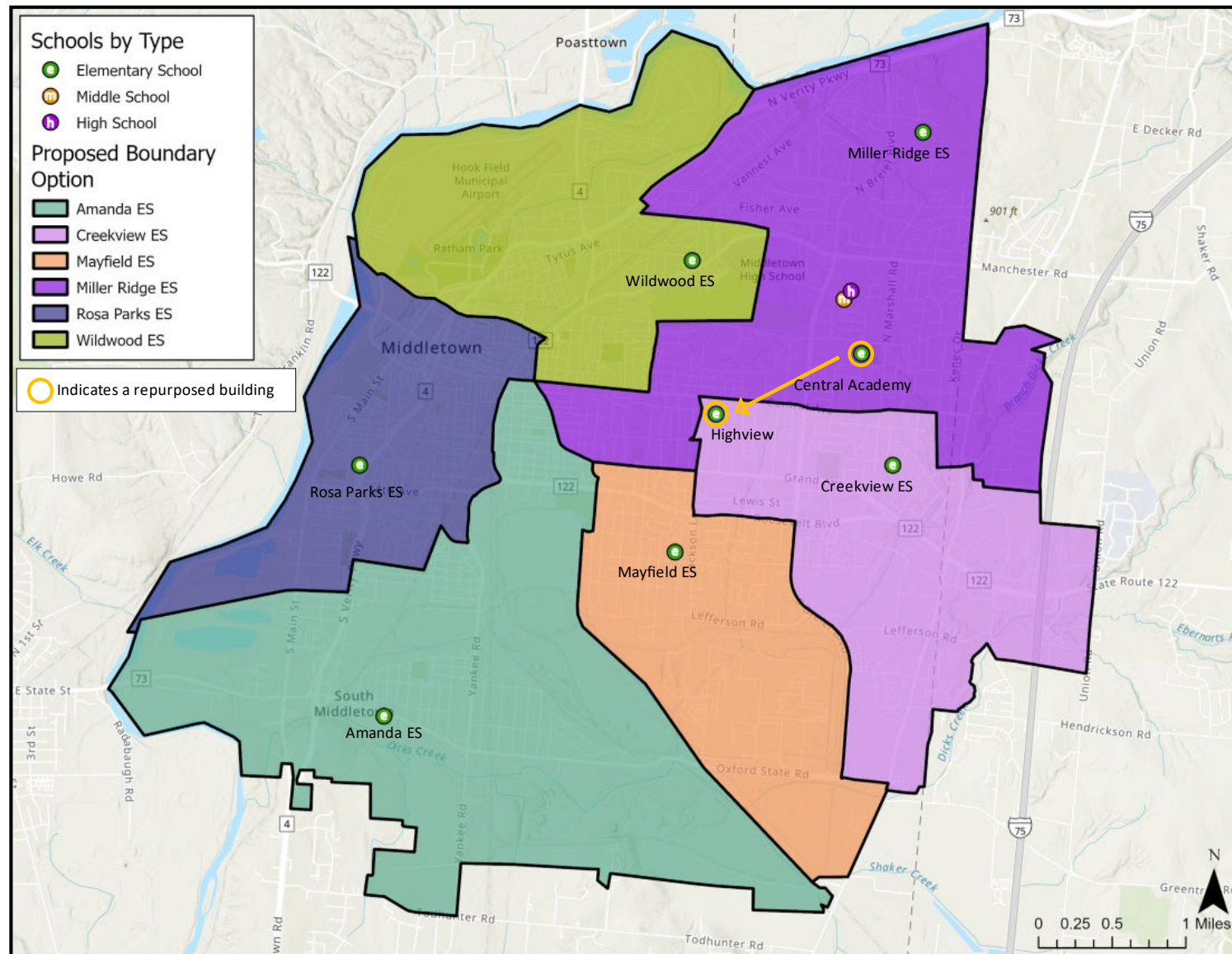
School	Program Capacity	Live-In Enroll.	Live-In Utilization	Remaining Seats	2029-30 Projected Utilization
Amanda ES	661	472	71%	189	69%
Central Academy at Highview	625	355	57%	270	55%
Creekview ES	583	465	80%	118	77%
Mayfield ES	625	527	84%	98	82%
Miller Ridge ES	583	496	85%	87	82%
Rosa Parks ES	897	496	55%	401	54%
Wildwood ES	625	480	77%	145	74%
<b>TOTAL</b>	<b>4,599</b>	<b>3,291</b>	<b>72%</b>	<b>1,308</b>	<b>69%</b>

Walkability	
1,087	33%

Students Moved (K-6 total)
101

Value does not include Central Academy program moving to Highview

Assigned to Closest School?		
1st Closest	2,344	71%
2nd Closest	514	16%
3rd Closest	49	1%
> 3rd Closest	372	11%





## ► SURVEY RESULTS

### SUMMARIES

#### Option 1

- Concerns about overcrowding and resource allocation at Rosa Parks ES
- Preference for equitable distribution of students and resources among schools
- Specific issues with boundaries impacting school choices and logistics
- Mixed opinions on the relocation of Central Academy and its impact on students

#### Option 3

- Concerns about overcrowding at Rosa Parks ES
- Worries about the impact on students, especially those with special needs and those currently receiving support services
- Concerns about underutilization at Amanda and Central Academy (@ Highview)
- Questions about the financial implications and long-term sustainability of the proposed changes

#### Option 2

- Many are opposed to changing schools and the disruption it may cause
- Concerns about overcrowding and resource allocation at Rosa Parks ES
- Mixed opinions on the relocation of Central Academy and its impact on students
- There is anxiety over the impact on students with special needs and the overall utilization of school buildings

#### Option 4

- Option 4 is favored for affecting the fewest number of students and staff, keeping communities and support teams intact
- Concerns include utilization rates of certain schools and the long-term impact on resources and space
- Many appreciate the stability it offers, minimizing disruption to students' education and social environments

# RECOMMENDATION





## ► RECOMMENDATION

### Recommendation

- Built with Option 4 as the starting point (most favored option)
- Central Academy will move to the Highview building
- ELC classrooms will move to the current Central Academy building; overflow from the ELC will attend Rosa Parks ES (along with their current PreK spaces)

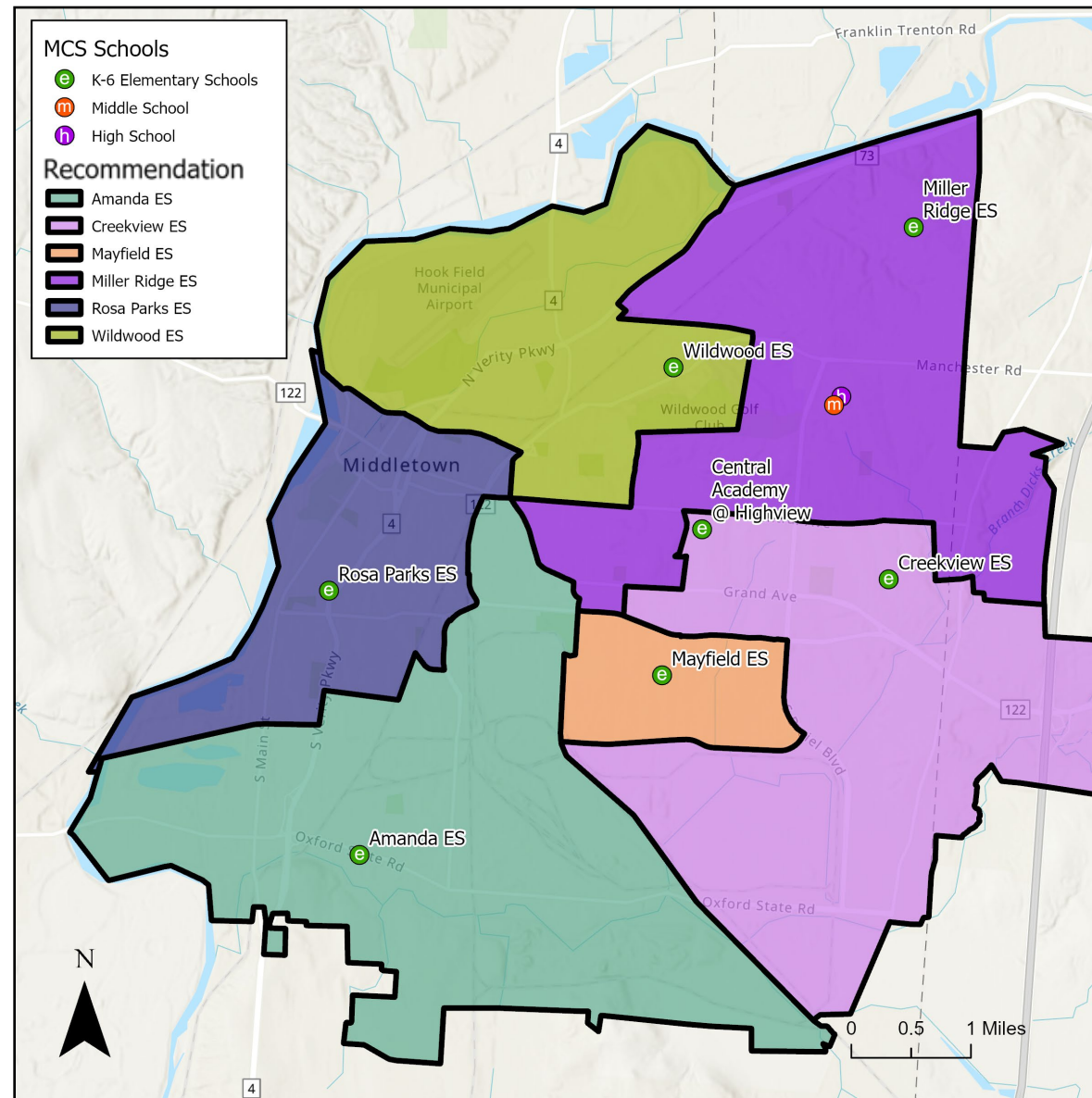
School	Program Capacity	Live-In Enroll.	Live-In Utilization	Remaining Seats	2029-30 Projected Utilization
Amanda ES	661	472	71%	189	69%
Creekview ES	583	499	86%	84	83%
Central Academy @ Highview	625	355	57%	270	55%
Mayfield ES	625	483	77%	142	75%
Miller Ridge ES	583	506	87%	77	84%
Rosa Parks ES	897	496	55%	401	54%
Wildwood ES	625	480	77%	145	74%
<b>TOTAL</b>	<b>4,599</b>	<b>3,291</b>	<b>72%</b>	<b>1,308</b>	<b>69%</b>

Note: All enrollments represent grades K-6.

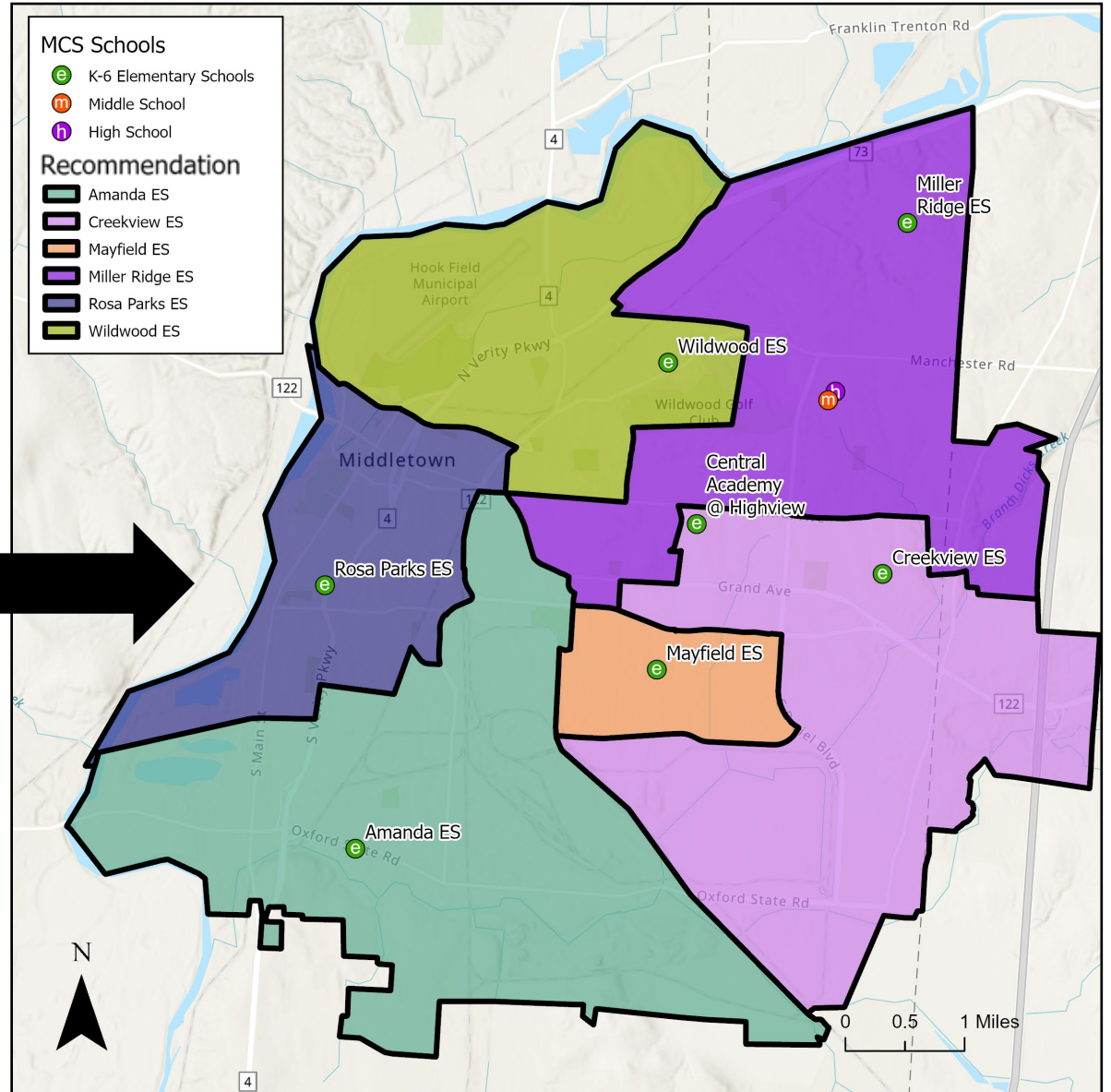
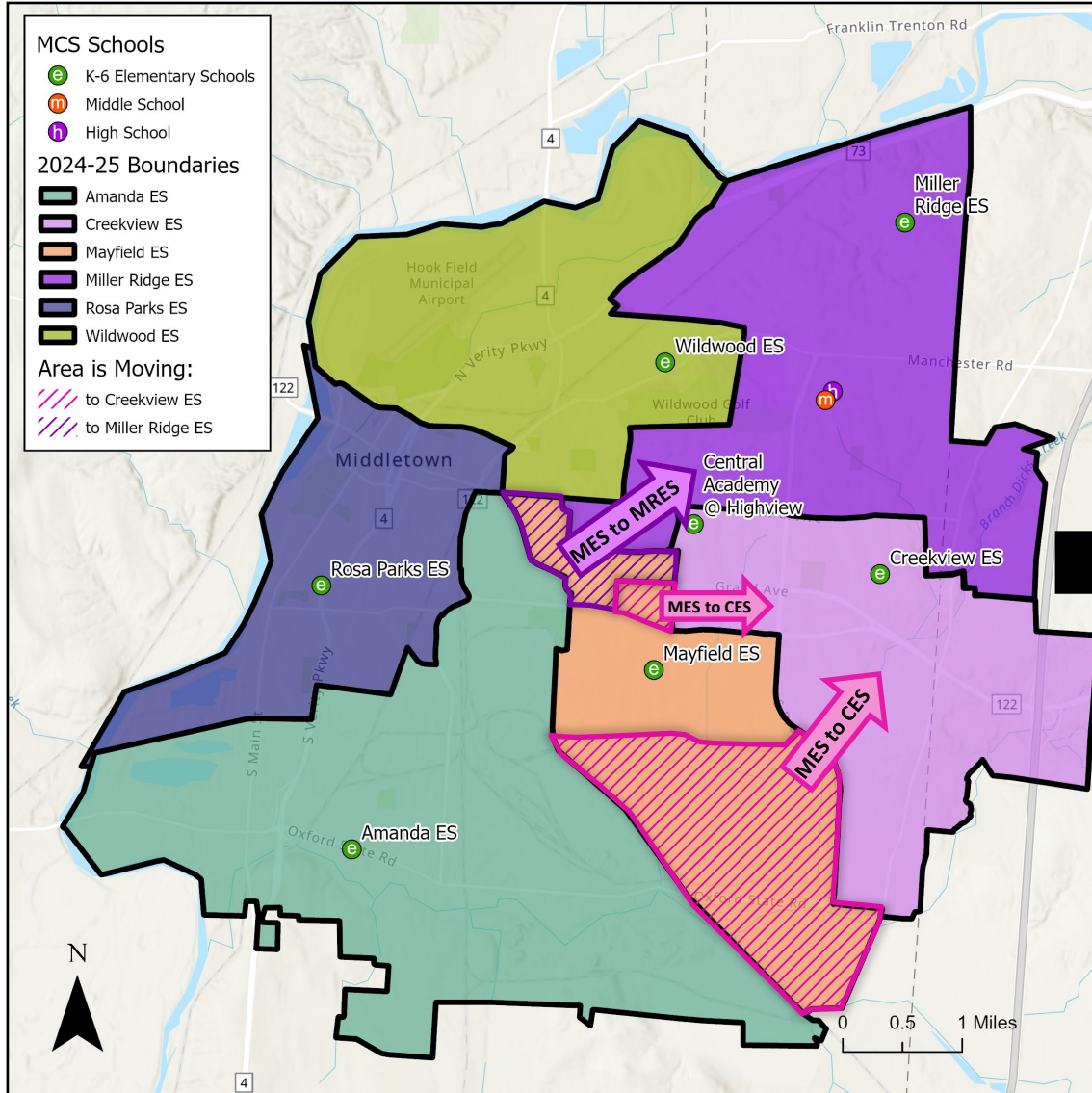
Walkability	
1,077	33%

Students Moved (K-6 total)
149

Assigned to Closest School?		
1st Closest	2,296	70%
2nd Closest	551	17%
3rd Closest	49	1%
> 3rd Closest	383	12%



# ► RECOMMENDATION





Thank you!



WOOLPERT

