



MIDDLETOWN CITY SCHOOLS
K-6 REDISTRICTING: OPTIONS & COMMUNITY FEEDBACK

DECEMBER 2024



► K - 6 REDISTRICTING

**Data Review
& Analysis**

**Boundary
Planning
Criteria**

**Scenario
Creation**

**Community
Outreach**

**Scenario
Revisions**

**Board
Discussion &
Action**

► K - 6 REDISTRICTING PROCESS

Data Review & Analysis

- **Enrollment Projections**
 - Cohort Survival Method
 - Census & American Community Survey datasets
- **Housing Developments**
- **Capacity Analysis**
- **Project website:** to contain all process-related presentations, surveys, reports, and other materials

Boundary
Planning
Criteria

Creation

Community
Outreach

Scenario
Revisions

Board
Discussion &
Action

► K - 6 REDISTRICTING
PROCESS



The diagram illustrates the K-6 Redistricting Process as a sequence of steps within a large arrow pointing right. The steps are: Demographic Studies Data Review Analysis, Boundary Planning Criteria, Scenario Creation, Community Feedback, Scenario Review, and Board Discussion & Action. The 'Boundary Planning Criteria' step is highlighted in a dark purple box, while the others are in light blue boxes.

Boundary Planning Criteria

- **Criteria to be used as planning parameters or guidelines when creating boundary scenarios**
- **Community feedback opportunity, results have been compiled into a report (available on project website)**

► K - 6 REDISTRICTING PROCESS

Demographic
Studies
Data Review &
Analysis

Boundary
Planning
Criteria

**Scenario
Creation**

- **Boundary scenarios were created using the stakeholder feedback regarding criteria as planning parameters**
- **Scenarios are intended to encourage feedback and generate conversation**
- **Scenarios will have different levels of effectiveness, longevity, and impact**

► K - 6 REDISTRICTING
PROCESS

- **Boundary scenarios presented to community for feedback**
- **Ensure stakeholders understand process & reasoning behind boundary adjustments**
- **Community feedback will be compiled into a report**



The diagram illustrates a six-step process for K-6 redistricting, shown as a sequence of rounded rectangular boxes within a large arrow pointing to the right. The steps are: 1. Studies Data Review & Analysis, 2. Boundary Criteria, 3. Scenario Creation, 4. Community Outreach (highlighted in a dark purple box), 5. Scenario Revisions, and 6. Board Discussion & Action.

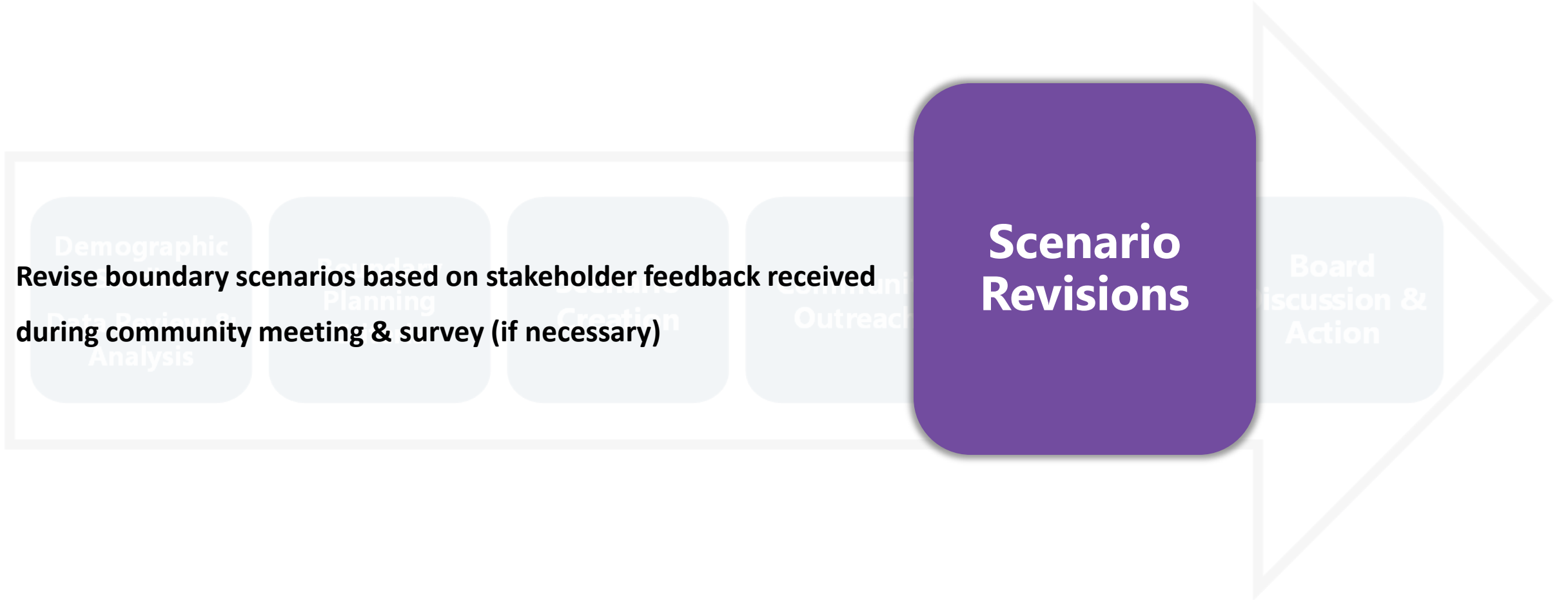
Community Outreach

Scenario Revisions

Board Discussion & Action

► **K - 6 REDISTRICTING**
PROCESS

- **Revise boundary scenarios based on stakeholder feedback received during community meeting & survey (if necessary)**



► K - 6 REDISTRICTING
PROCESS

- **Recommendation to align with boundary planning criteria (as much as possible) & support community feedback**

Demographic
Analysis

Planning
Criteria

Scenario
Creation

Community
Outreach

Scenario
Revisions

**Board
Discussion &
Action**

▶ K - 6 REDISTRICTING

TIMELINE

Month:		October 2024				November 2024				December 2024					January 2025				Implementation	
Week of (Monday):		7	14	21	28	4	11	18	25	2	9	16	23	30	6	13	20	27	(post-approval)	
Redistricting	Process Kickoff (internal team)									Thanksgiving Break										
	Collect & Review Data			Back-ground Report																
	Introduce Rezoning Process to Board & Community		Process & Background Data PPT																	
	Boundary Planning Criteria Survey				Criteria Results Report															
	Internal boundary worksession: Initial Options					Draft Options Packet														
	Internal worksession: Finalize Options for Community to Review						Options Packet													
	Community Meeting Preparation																			
	Facilitate Community Meeting & Online Survey																			
	Community Feedback Rollup & Reporting																	Results Report		
	Internal boundary worksession: 25-26 Boundary Recommendation																			
	Board Approval																	Rec. & Change Area PPT		
	Project Website																			
School Locator																				

Winter Break

Thanksgiving Break

Timeline is tentative and could change.

► STAKEHOLDER ROLES

MCS Community

Informs the recommendation

Guides the Process

- Provides feedback regarding priorities and boundary options

Administration Team

Makes the recommendation

Steers & Promotes the Process

- Ensures options are meeting District goals

Board of Education

Approves the recommendation

Oversees the Process

- Provides high-level feedback about boundary concepts & options



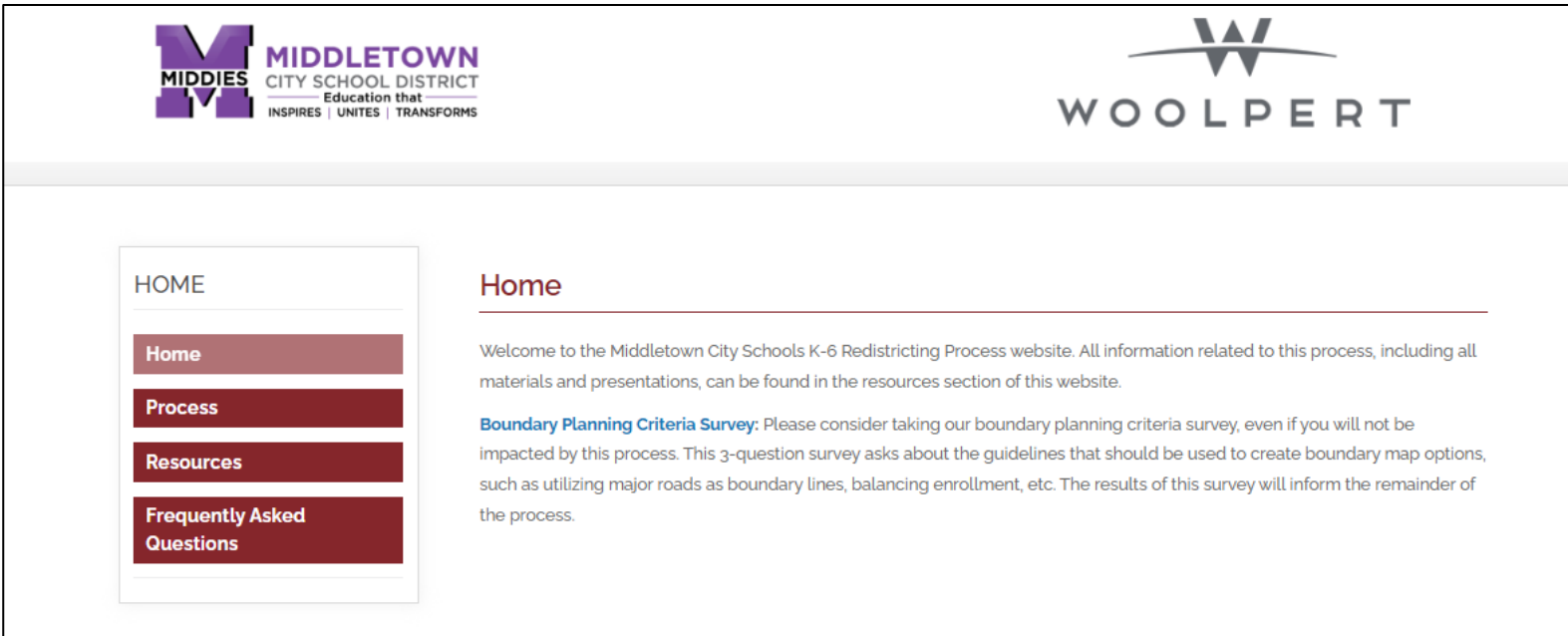
► PROJECT WEBSITE

The project website will hold all information related to the process.

Process: explanations of each step of this process

Resources: reports, surveys, presentations, maps & interactive maps, background datasets

Frequently Asked Questions: the FAQ page will house questions that we typically hear during redistricting processes, plus any questions that come in throughout the process.



K-6 REDISTRICTING CRITERIA SURVEY

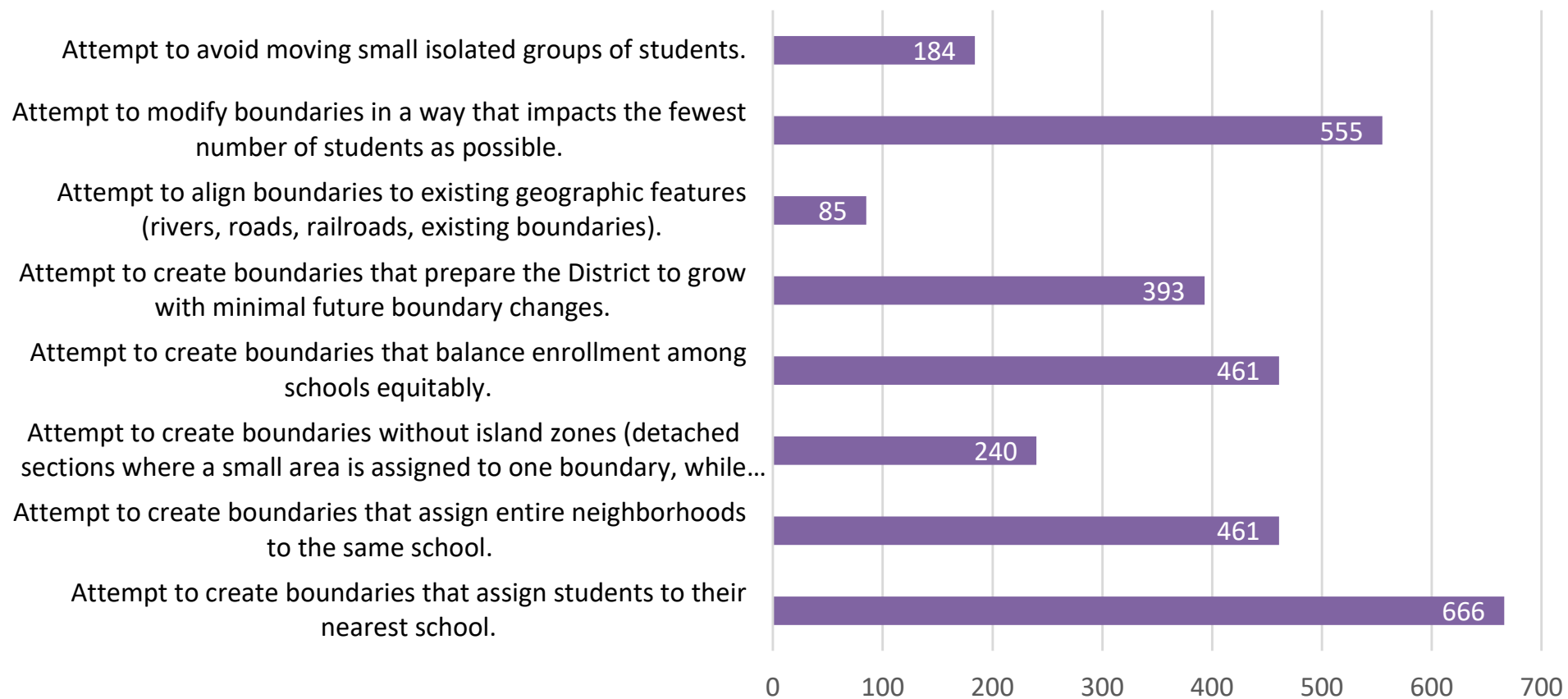


To the greatest extent possible:

- Attempt to create boundaries that assign students to their nearest school.
- Attempt to create boundaries that assign entire neighborhoods to the same school.
- Attempt to create boundaries that balance enrollment among schools equitably.
- Attempt to avoid moving small isolated groups of students.
- Attempt to modify boundaries in a way that impacts the fewest number of students as possible.
- Attempt to align boundaries to existing geographic features (rivers, roads, railroads, existing boundaries).
- Attempt to create boundaries that prepare the District to grow minimal future boundary changes.
- Attempt to create boundaries without island zones (detach sections where a small area is assigned to one boundary, while the surrounding area is assigned to a different boundary).

► K - 6 REDISTRICTING GUIDELINES EXAMPLES

Please select the top three (3) factors that are most important to you when redrawing boundaries.



Top 4 Criteria:

Attempt to create boundaries that assign students to their nearest school.

Attempt to modify boundaries in a way that impacts the fewest number of students as possible.

Attempt to create boundaries that assign entire neighborhoods to the same school.

Attempt to create boundaries that balance enrollment among schools equitably.



REDISTRICTING DATASETS



▶ BACKGROUND DATA

CAPACITY

Class Sizes	
KG Class	25
1st Grade Class	25
2nd Grade Class	25
3rd Grade Class	27
4th Grade Class	27
5th Grade Class	27
6th Grade Class	27
Special Education	12

School	Total Instructional Spaces (Full-Size Classrooms)	Academic Core Classrooms (KG-6th Grade Homerooms)	Special Education Classrooms (Self-Contained)	Invervention/ Resource Spaces	"Specials"/ Elective Spaces (Art, Music, Passport to Tomorrow)	Core Spaces (Cafeteria, Gym, Media Center)	Program Capacity
Central Academy	18	12	3	-	3	3	350
Amanda Elementary	31	23	5	8	3	3	661
Creekview Elementary	28	20	5	8	3	3	583
Highview Elementary (prev. 6th)	28	23	2	6	3	3	625
Mayfield Elementary	28	23	2	6	3	3	625
Miller Ridge Elementary	28	20	5	8	3	3	583
Rosa Parks Elementary	40	32	5	14	3	3	897
Wildwood Elementary	28	23	2	6	3	3	625
TOTAL	229	176	29	56	24	24	4,949



▶ BACKGROUND DATA

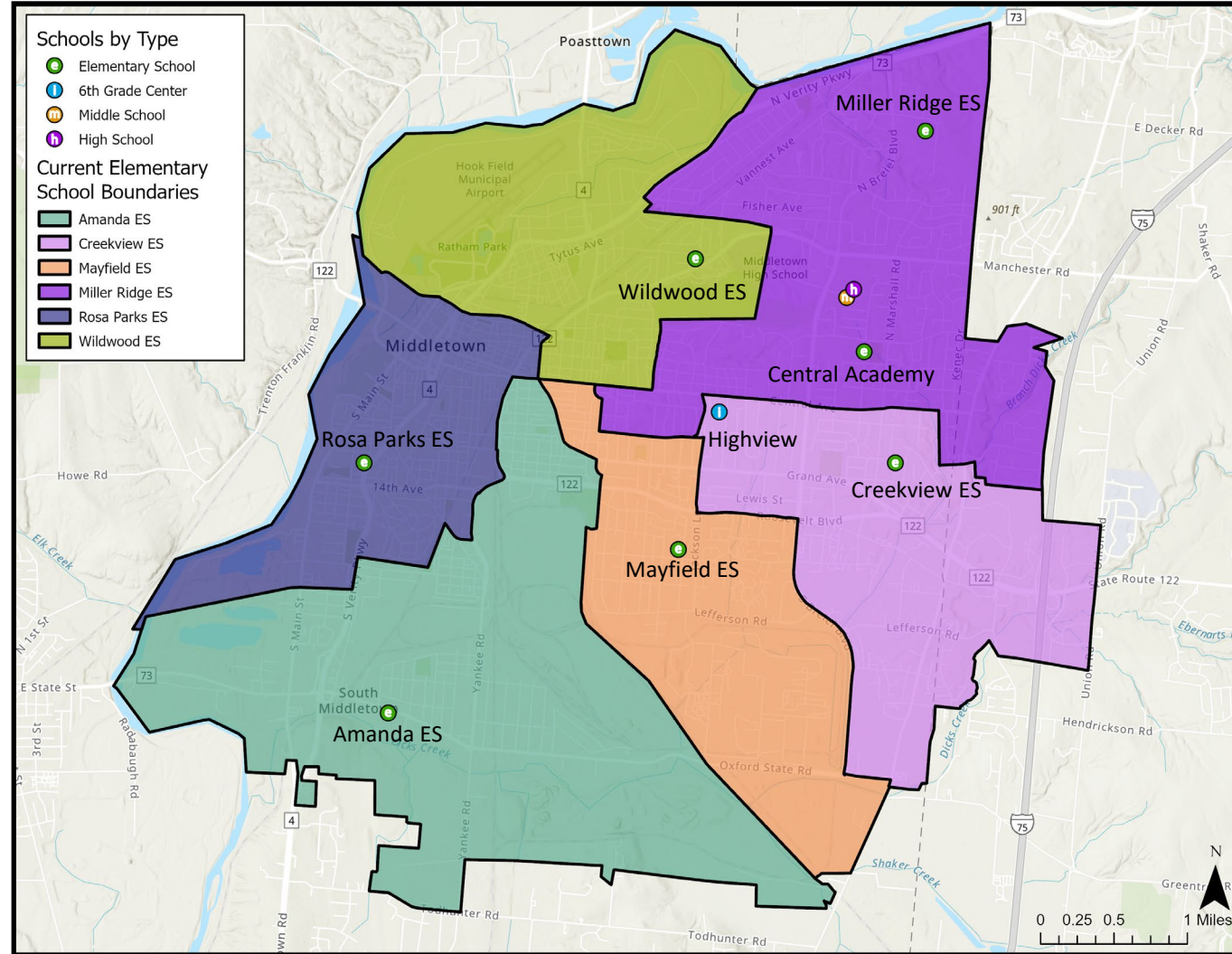
CURRENT BOUNDARIES

School	Program Capacity	Live-In Enroll.	Live-In Utilization	Remaining Seats	2029-30 Projected Utilization
Central Academy	350	355	101%	-5	98%
Amanda ES	661	472	71%	189	69%
Highview	625	0	0%	625	0%
Creekview ES	583	465	80%	118	77%
Mayfield ES	625	607	97%	18	94%
Miller Ridge ES	583	416	71%	167	69%
Rosa Parks ES	897	496	55%	401	54%
Wildwood ES	625	480	77%	145	74%
TOTAL*	4,599	2,936	64%	1,663	69%

Note: All enrollments represent grades K-6.

Walkability	
1,087	33%

Assigned to Closest School?		
1st Closest	2,436	74%
2nd Closest	523	16%
3rd Closest	49	1%
> 3rd Closest	271	8%



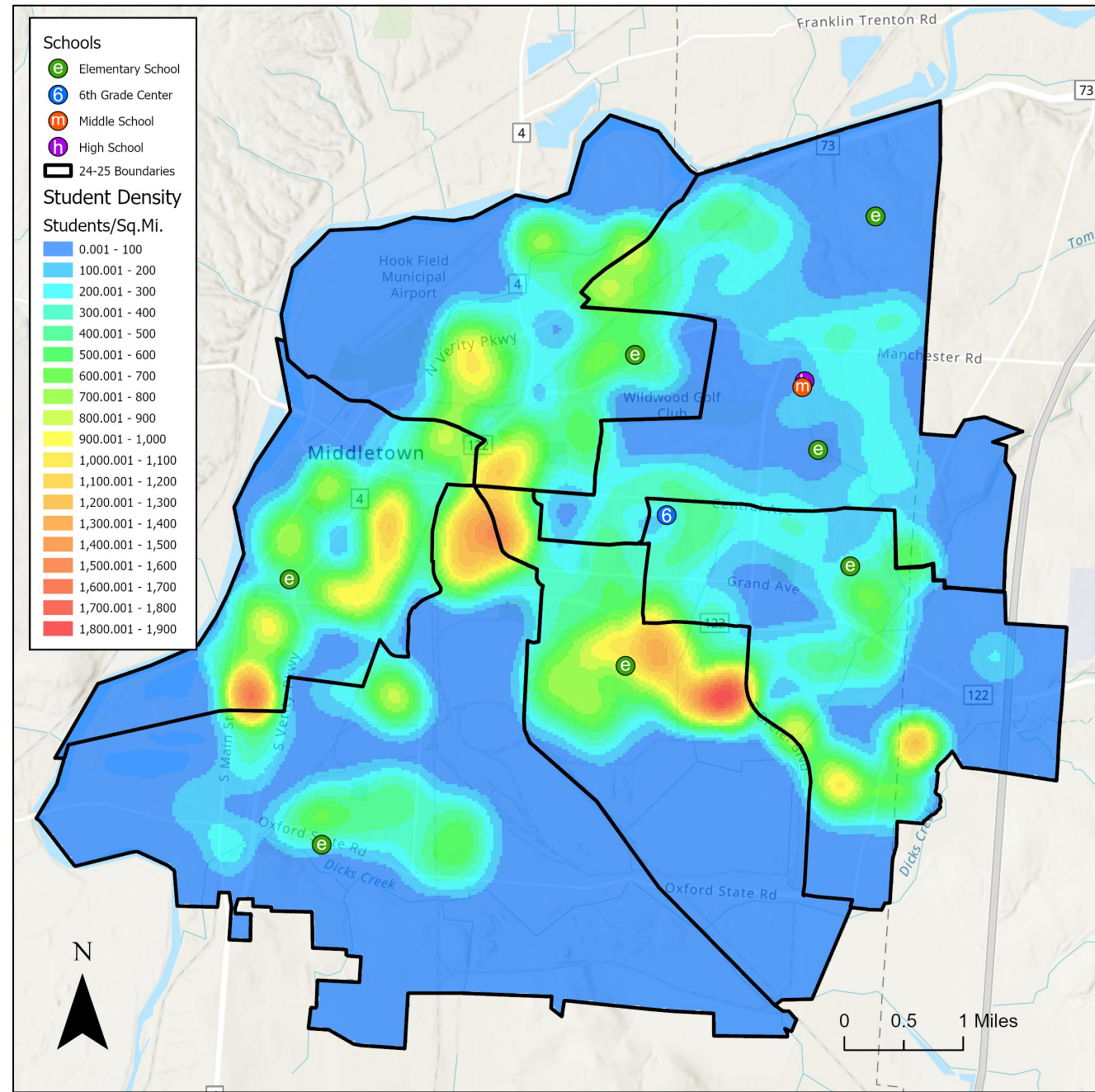
*Totals do not include Central Academy because it is not a neighborhood school



▶ BACKGROUND DATA

LIVE/ATTEND & DENSITY

2024-25 K-6 Live/Attend		School of Attendance								Transfer Out
		Amanda ES	Creekview ES	Mayfield ES	Miller Ridge ES	Rosa Parks ES	Wildwood ES	Central Academy	Highview 6th	
School of Residence	Amanda ES	369	6	3	4	16	2	38	-	69
	Creekview ES	4	347	4	9	13	19	50	-	99
	Mayfield ES	2	14	481	10	2	20	53	-	101
	Miller Ridge ES	1	5	5	337	1	8	39	-	59
	Rosa Parks ES	5	7	4	6	391	5	58	-	85
	Wildwood ES	2	8	3	12	6	380	49	-	80
	Highview 6th	-	-	-	-	-	-	58	425	58
	Out of District	5	4	3	6	3	8	10	6	-
	Live & Attend	369	347	481	337	391	380	-	Total K-6th:	
Transfer In	19	44	22	47	41	62	355	3,326		



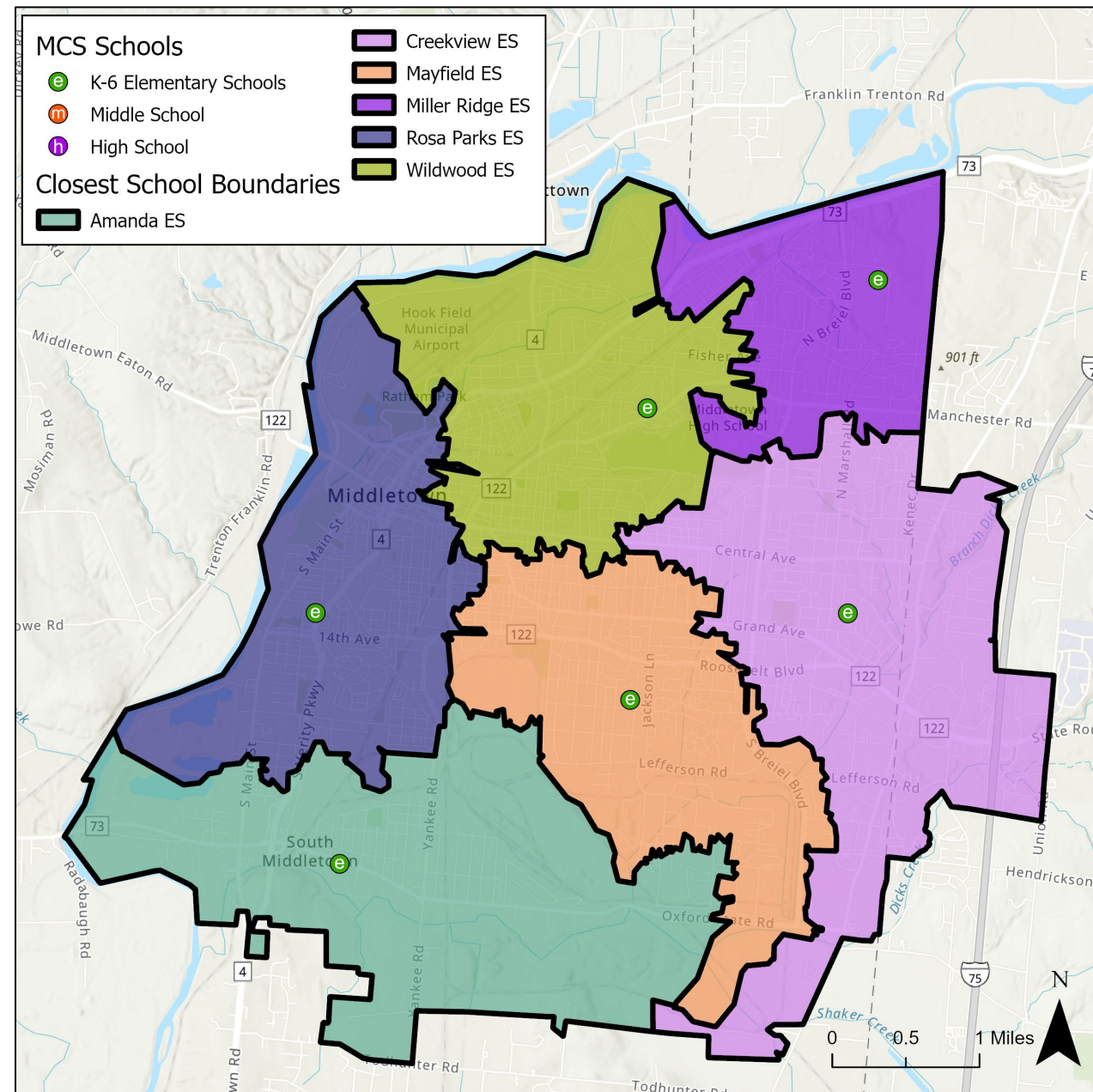


▶ **BACKGROUND DATA**
CLOSEST SCHOOL ANALYSIS

NOT AN OPTION!!

Metrics for Closest School Boundaries

School	Program Capacity	Live-In Enroll.*	Live-In Utilization	Remaining Seats	2029-30 Projected Utilization
Amanda ES	661	231	35%	430	34%
Creekview ES	583	552	95%	31	92%
Mayfield ES	625	939	150%	-314	146%
Miller Ridge ES	583	154	26%	429	26%
Rosa Parks ES	897	674	75%	223	73%
Wildwood ES	625	729	117%	-104	113%
TOTAL	3,974	3,279	83%	695	69%



*Enrollment values include students currently attending Central Academy; this dataset is not including the students that attend Central Academy from outside of District boundaries (12 students)

OPTIONS



▶ OPTION 1

Option Overview

- Central Academy would move to the Highview building.
- ELC classrooms would move to the current Central Academy building.
- The Amanda Elementary boundary is reduced to allow more students to attend a school closer to home.

School	Program Capacity	Live-In Enroll.	Live-In Utilization	Remaining Seats	2029-30 Projected Utilization
Amanda ES	661	310	47%	351	45%
Central Academy at Highview	625	355	57%	270	55%
Creekview ES	583	474	81%	109	79%
Mayfield ES	625	518	83%	107	80%
Miller Ridge ES	583	438	75%	145	73%
Rosa Parks ES	897	716	80%	181	77%
Wildwood ES	625	480	77%	145	74%
TOTAL	4,599	3,291	72%	1,308	69%

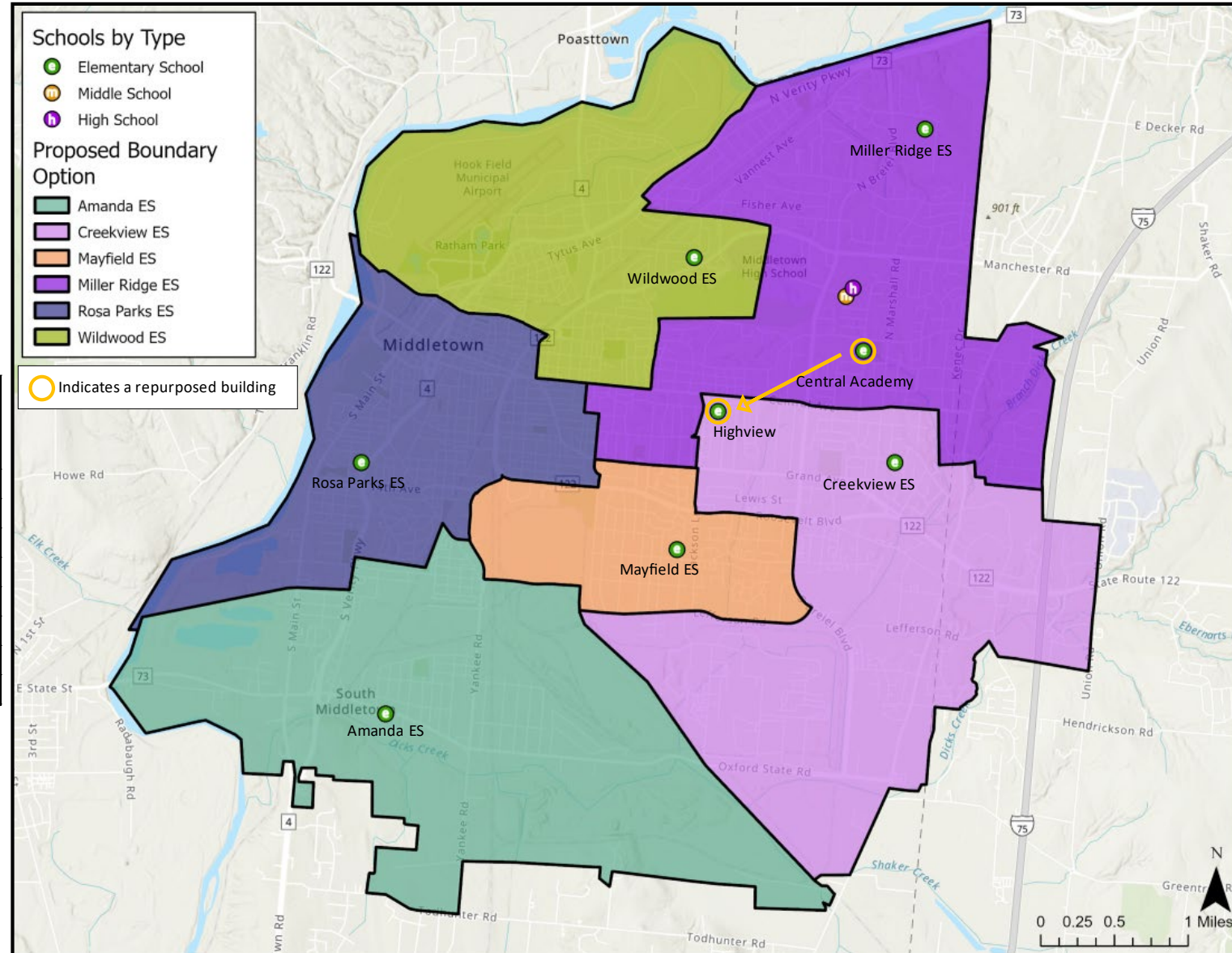
Note: All enrollments represent grades K-6.

Walkability	
1,077	33%

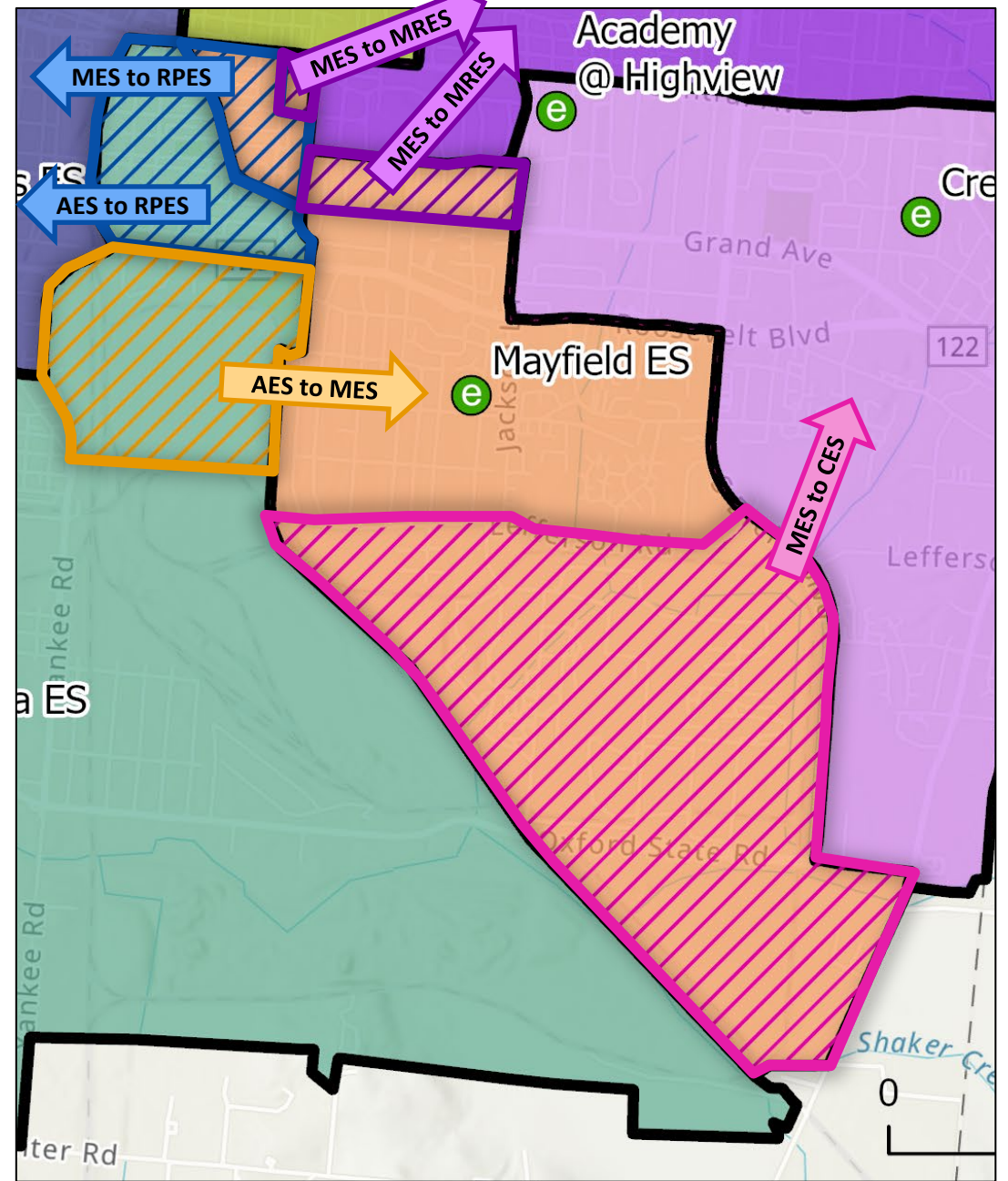
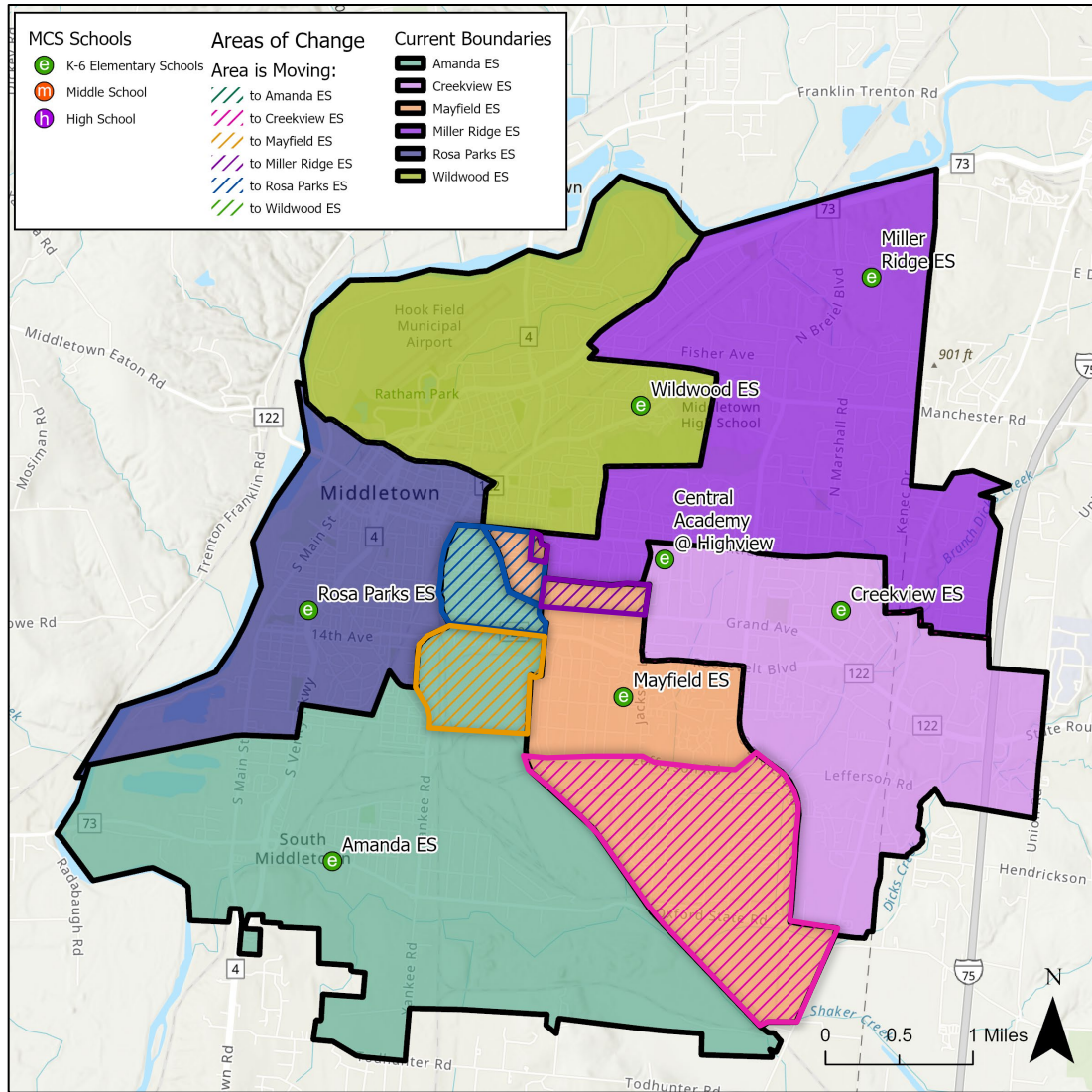
Students Moved (K-6 total)
296

Value does not include Central Academy program moving to Highview

Assigned to Closest School?		
1st Closest	2,388	73%
2nd Closest	644	20%
3rd Closest	126	4%
> 3rd Closest	121	4%



▶ OPTION 1



▶ OPTION 2

Option Overview

- Central Academy would move to the Highview building.
- ELC classrooms would move to the current Central Academy building.
- The Amanda Elementary boundary is reduced to allow more students to attend a school closer to home.

School	Program Capacity	Live-In Enroll.	Live-In Utilization	Remaining Seats	2029-30 Projected Utilization
Amanda ES	661	324	49%	337	47%
Central Academy at Highview	625	355	57%	270	55%
Creekview ES	583	465	80%	118	77%
Mayfield ES	625	492	79%	133	76%
Miller Ridge ES	583	418	72%	165	70%
Rosa Parks ES	897	738	82%	159	80%
Wildwood ES	625	499	80%	126	77%
TOTAL	4,599	3,291	72%	1,308	69%

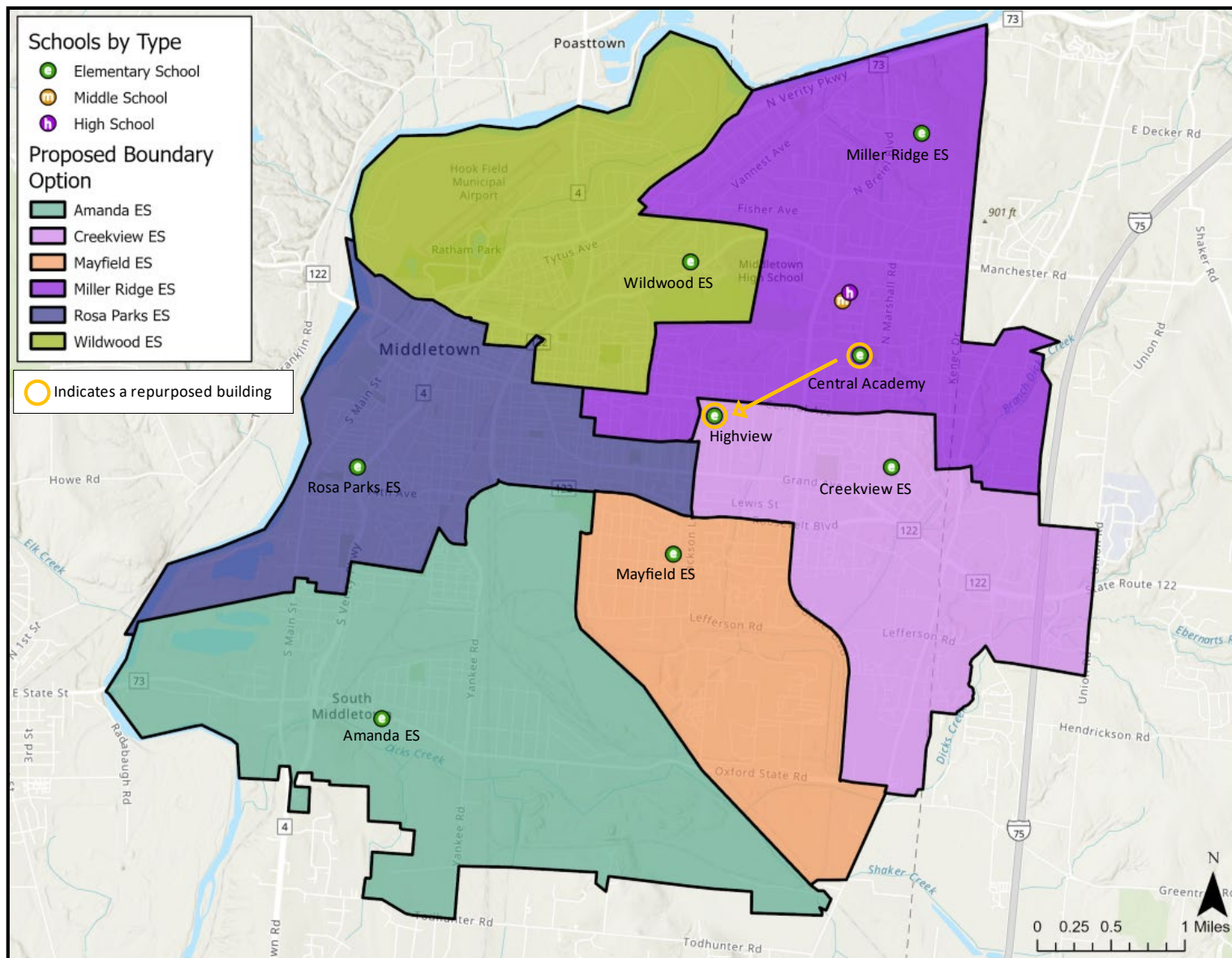
Note: All enrollments represent grades K-6.

Walkability	
1,084	33%

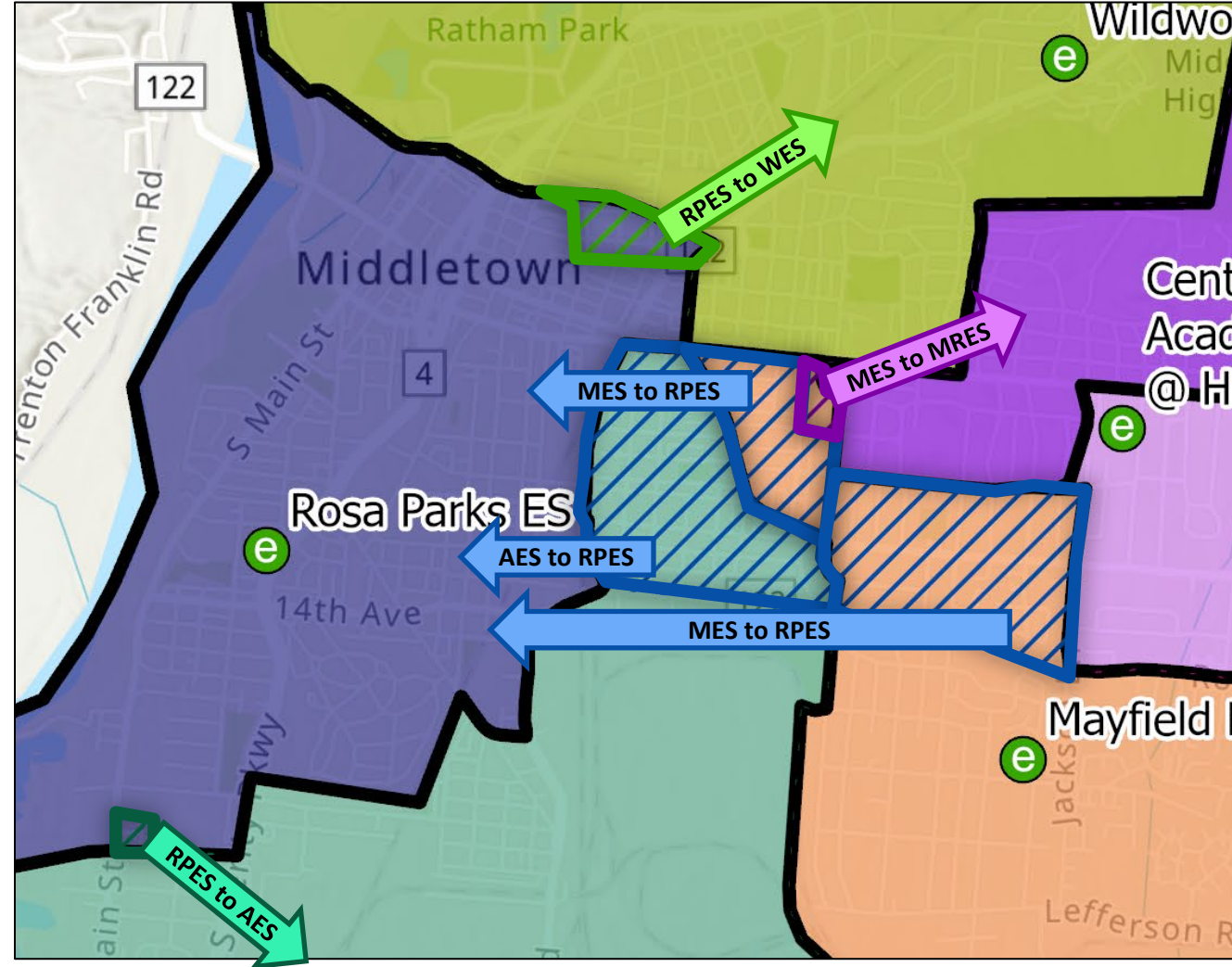
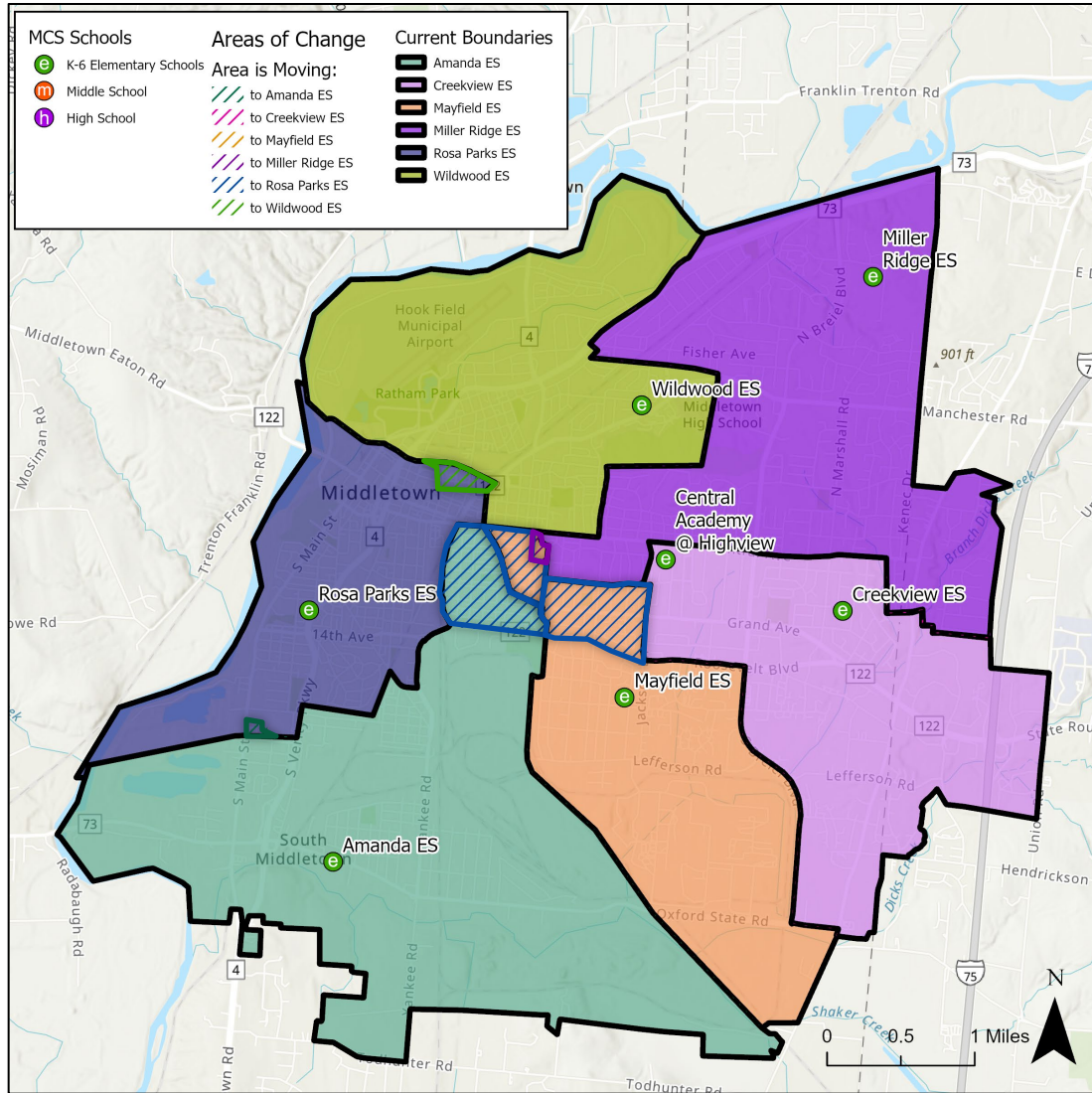
Students Moved (K-6 total)
360

Value does not include Central Academy program moving to Highview

Assigned to Closest School?		
1st Closest	2,352	71%
2nd Closest	648	20%
3rd Closest	133	4%
> 3rd Closest	146	4%



▶ OPTION 2



▶ OPTION 3

Option Overview

- Central Academy would move to the Highview building.
- ELC classrooms would move to the current Central Academy building.
- The Amanda Elementary boundary is reduced to allow more students to attend a school closer to home.

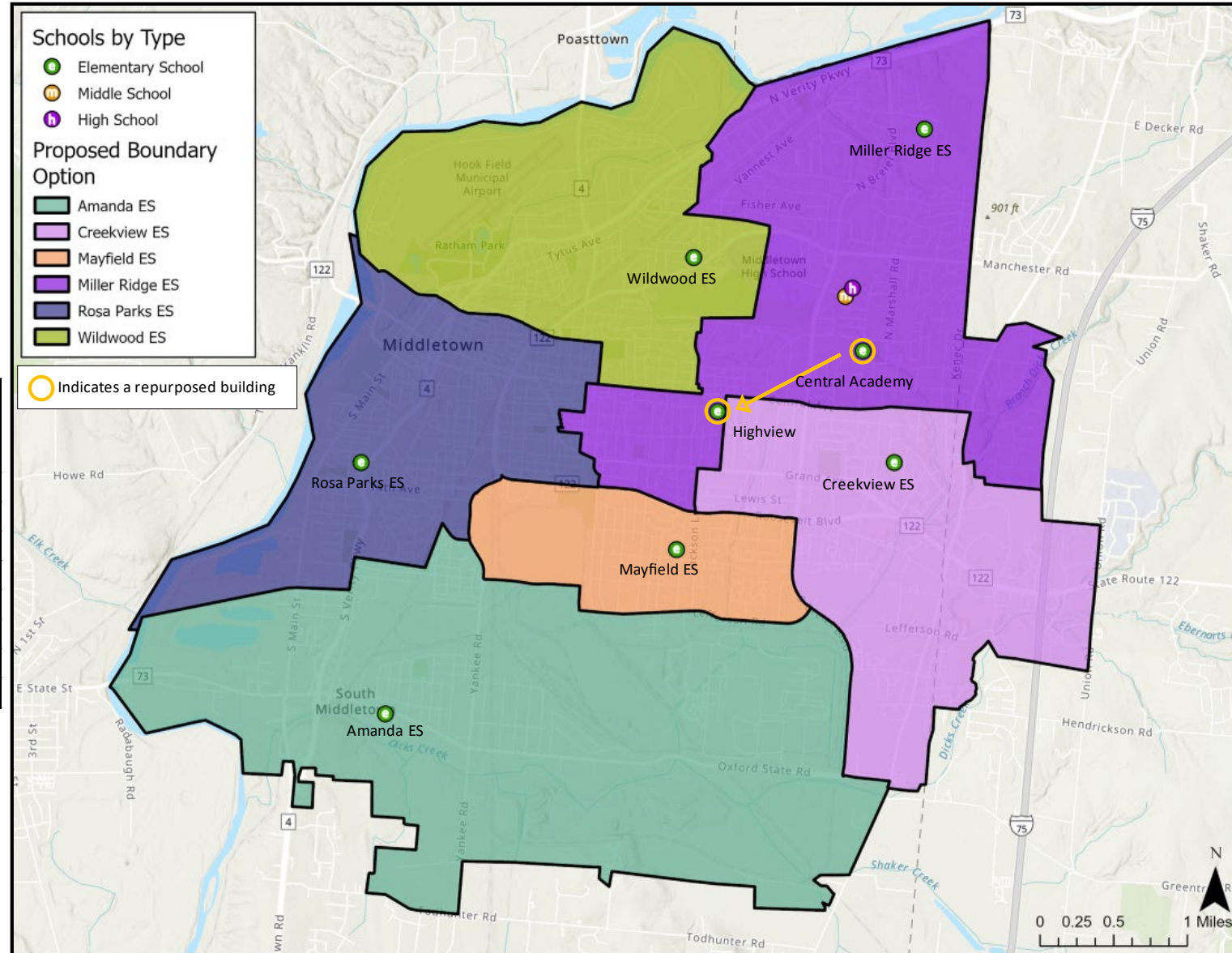
School	Program Capacity	Live-In Enroll.	Live-In Utilization	Remaining Seats	2029-30 Projected Utilization
Amanda ES	661	319	48%	342	47%
Central Academy at Highview	625	355	57%	270	55%
Creekview ES	583	483	83%	100	80%
Mayfield ES	625	483	77%	142	75%
Miller Ridge ES	583	429	74%	154	71%
Rosa Parks ES	897	746	83%	151	81%
Wildwood ES	625	476	76%	149	74%
TOTAL	4,599	3,291	72%	1,308	69%

Walkability	
1,110	34%

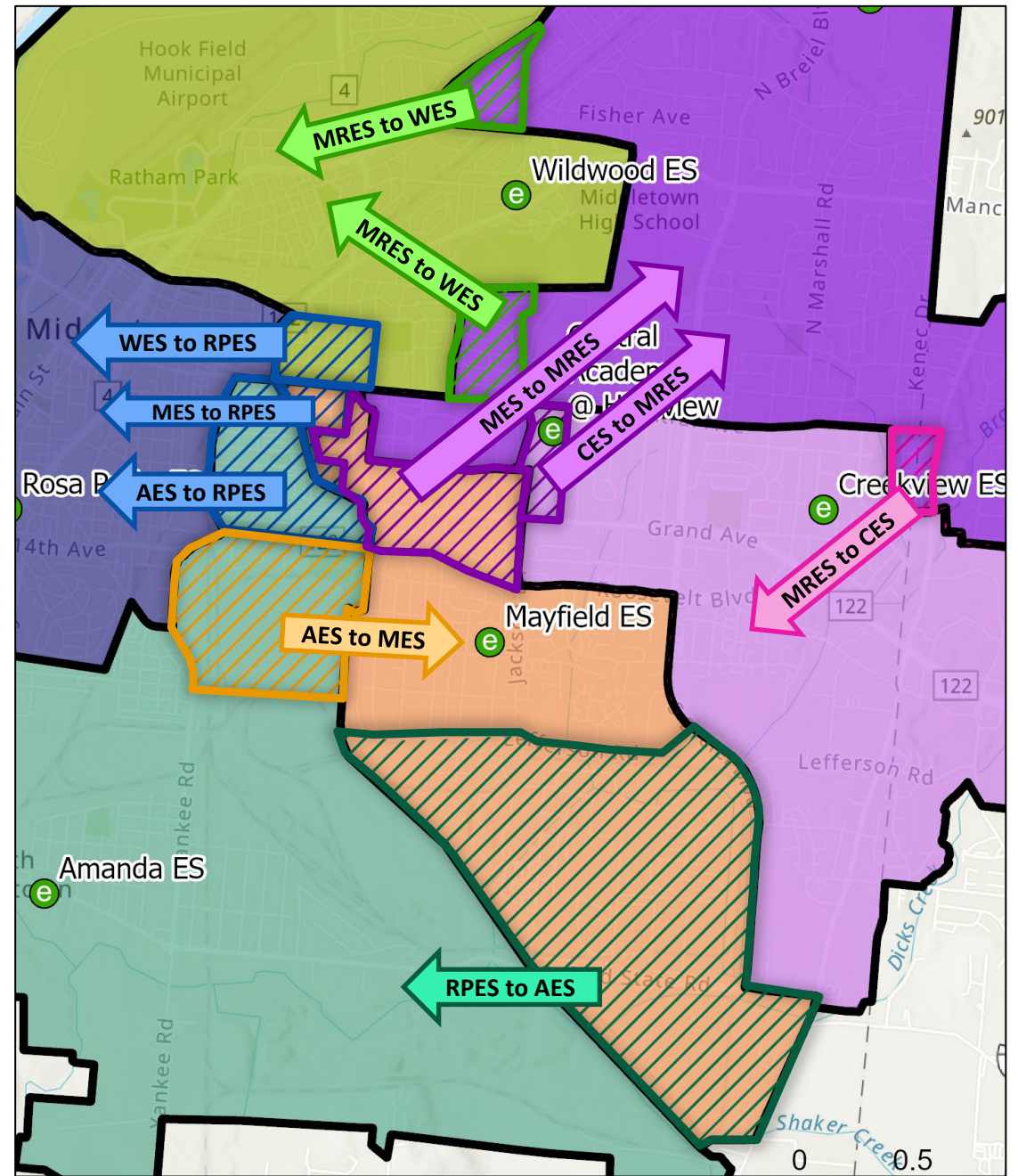
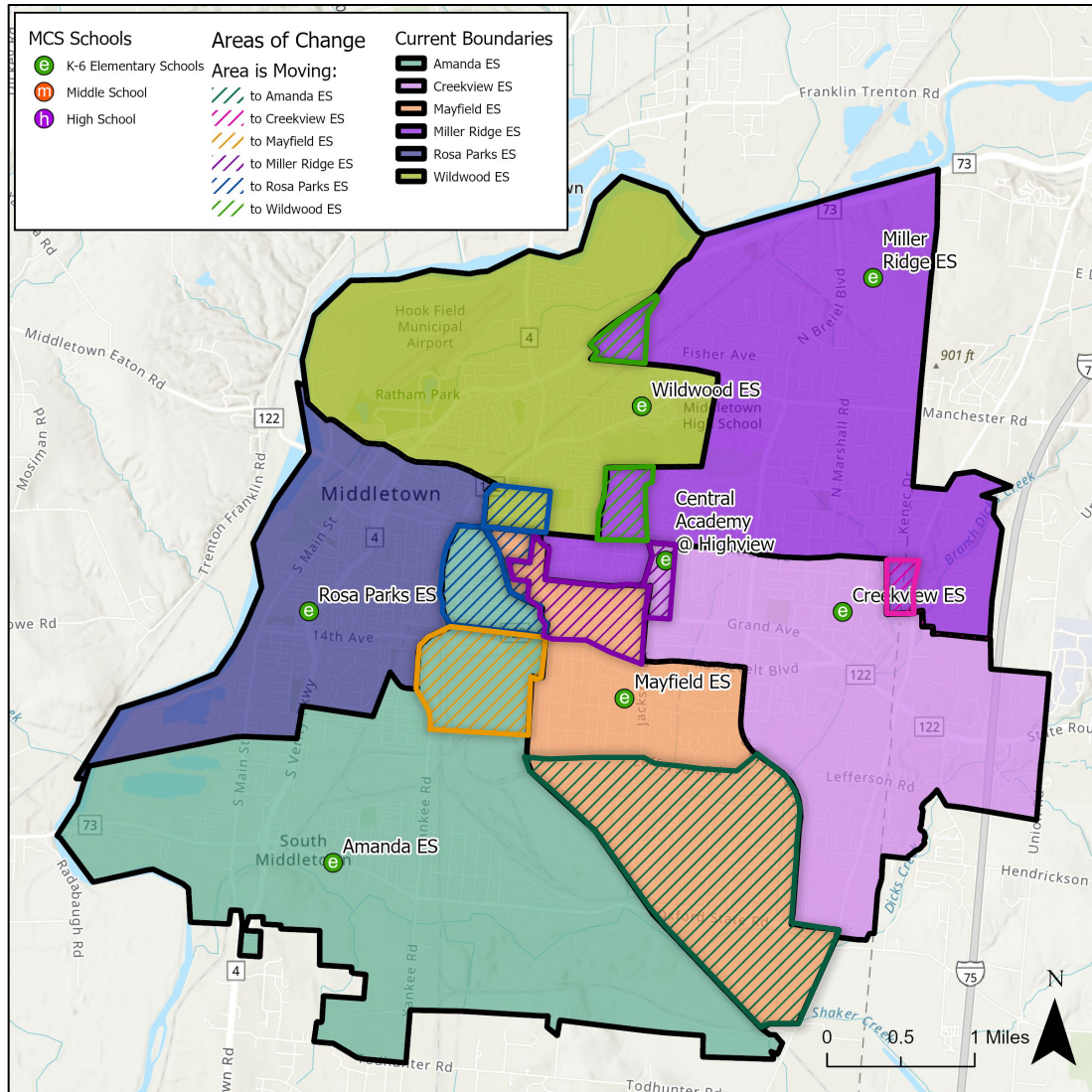
Students Moved (K-6 total)
522

Value does not include Central Academy program moving to Highview

Assigned to Closest School?		
1st Closest	2,371	72%
2nd Closest	584	18%
3rd Closest	120	4%
> 3rd Closest	204	6%



▶ OPTION 3

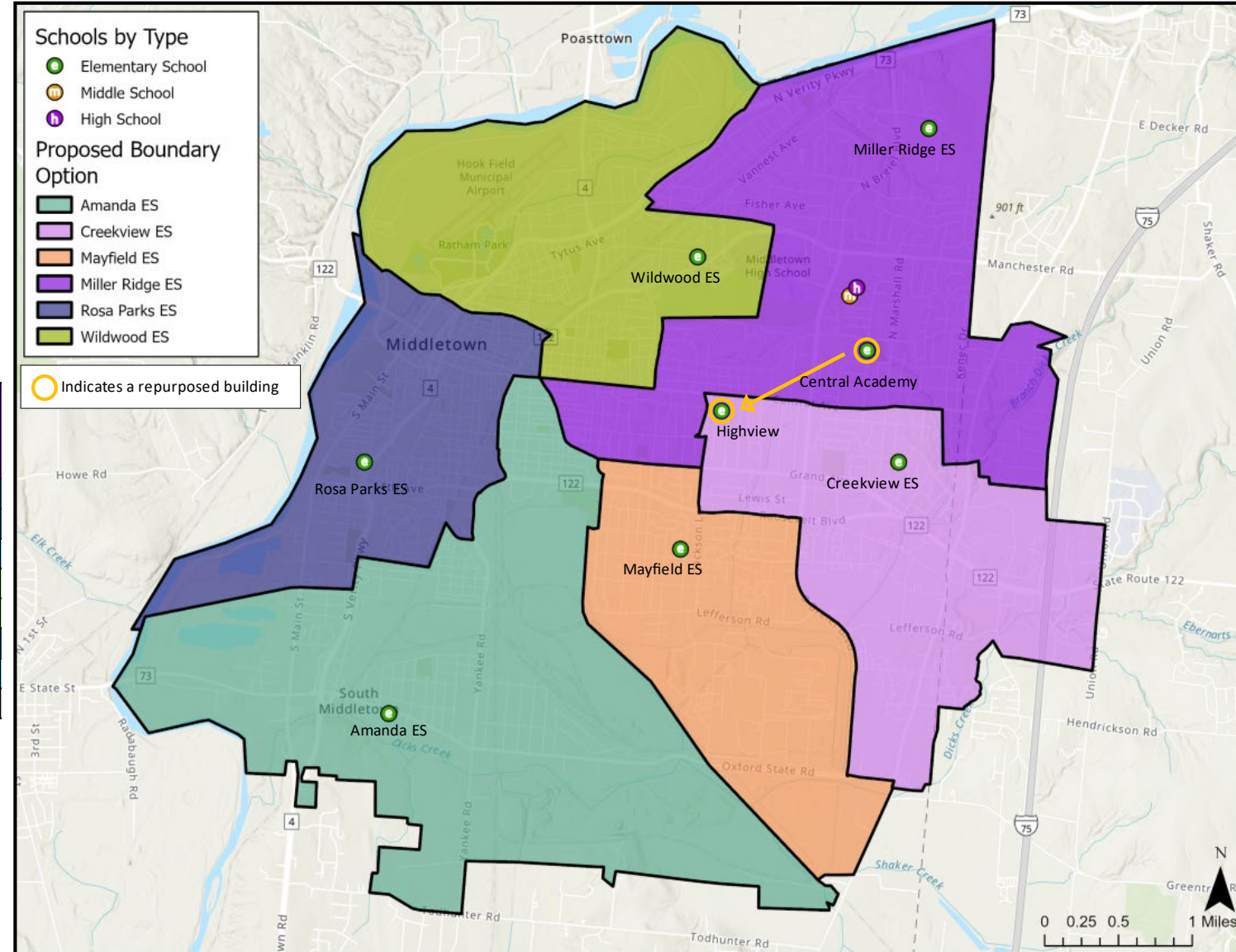




▶ OPTION 4

Option Overview

- Central Academy would move to the Highview building.
- ELC classrooms would move to the current Central Academy building.
- The Rosa Parks Elementary boundary remains the same as it is today to reduce the number of students moved.



School	Program Capacity	Live-In Enroll.	Live-In Utilization	Remaining Seats	2029-30 Projected Utilization
Amanda ES	661	472	71%	189	69%
Central Academy at Highview	625	355	57%	270	55%
Creekview ES	583	465	80%	118	77%
Mayfield ES	625	527	84%	98	82%
Miller Ridge ES	583	496	85%	87	82%
Rosa Parks ES	897	496	55%	401	54%
Wildwood ES	625	480	77%	145	74%
TOTAL	4,599	3,291	72%	1,308	69%

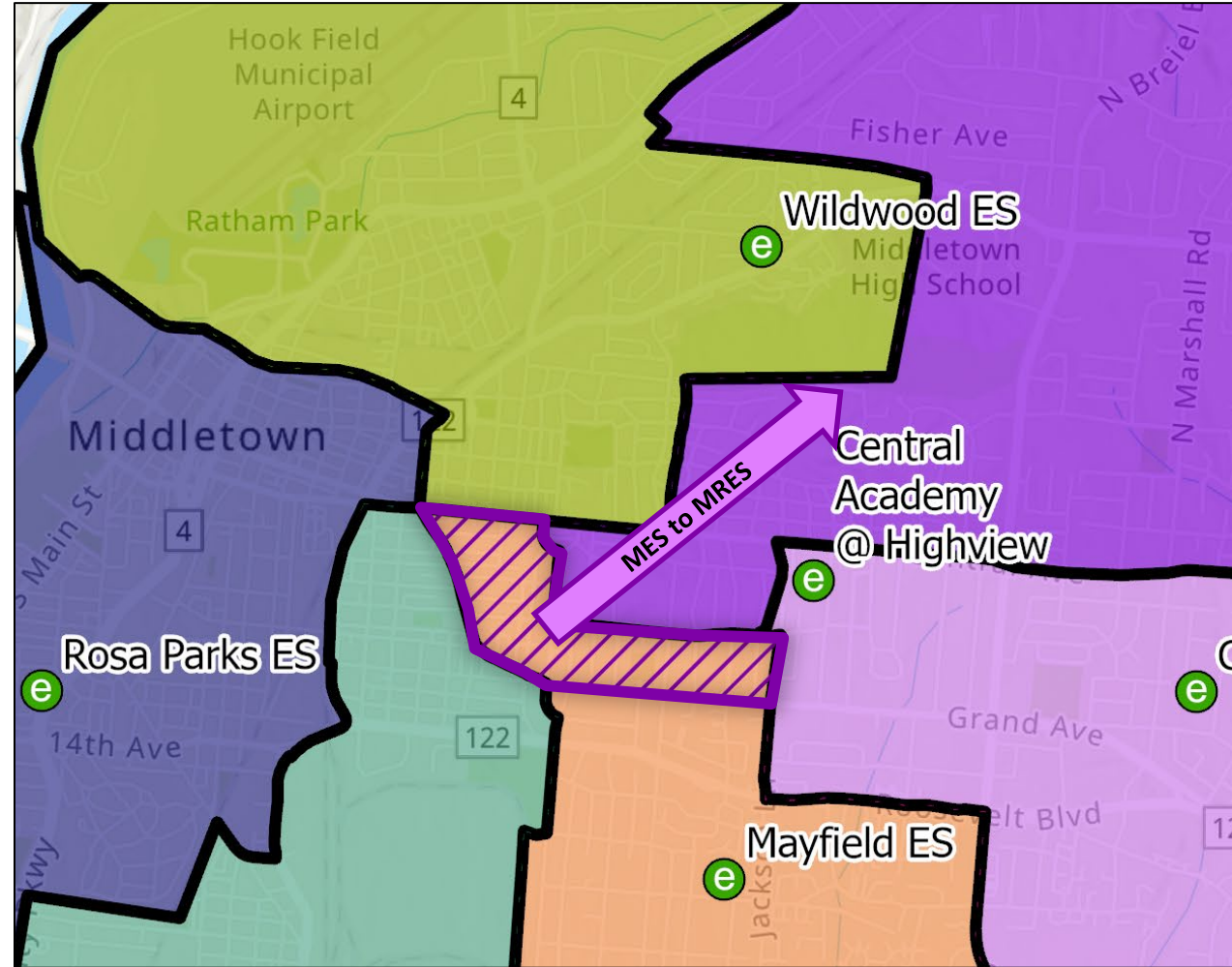
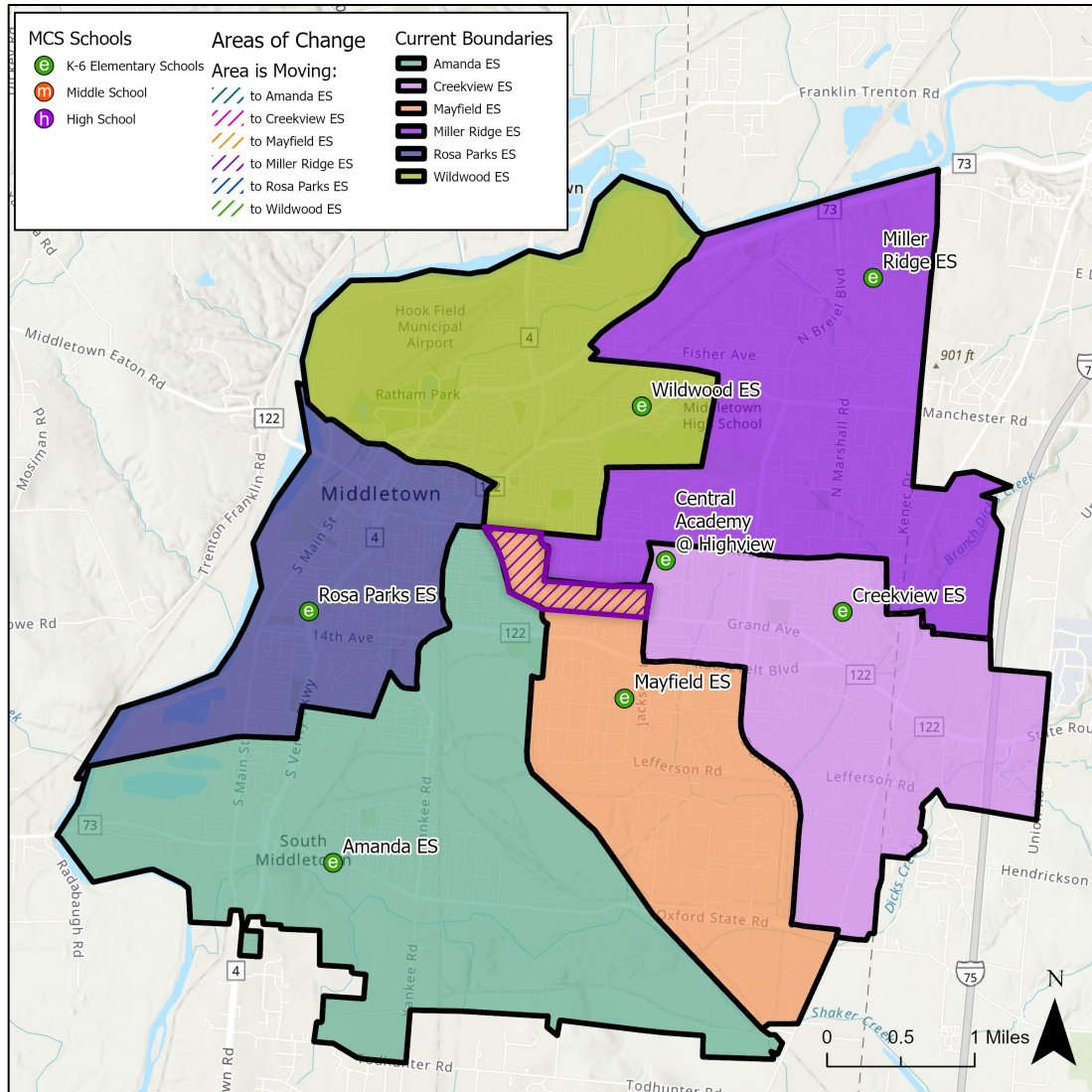
Walkability	
1,087	33%

Assigned to Closest School?		
1st Closest	2,344	71%
2nd Closest	514	16%
3rd Closest	49	1%
> 3rd Closest	372	11%

Students Moved (K-6 total)
101

Value does not include Central Academy program moving to Highview

► OPTION 4



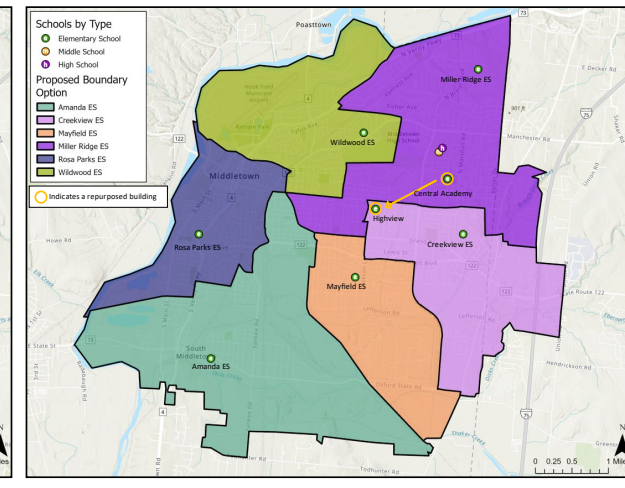
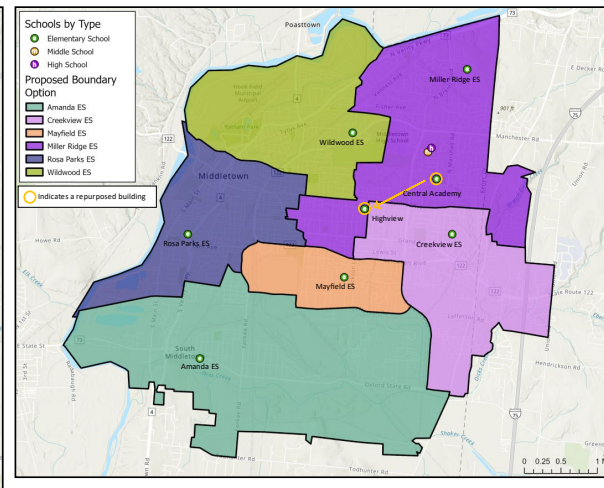
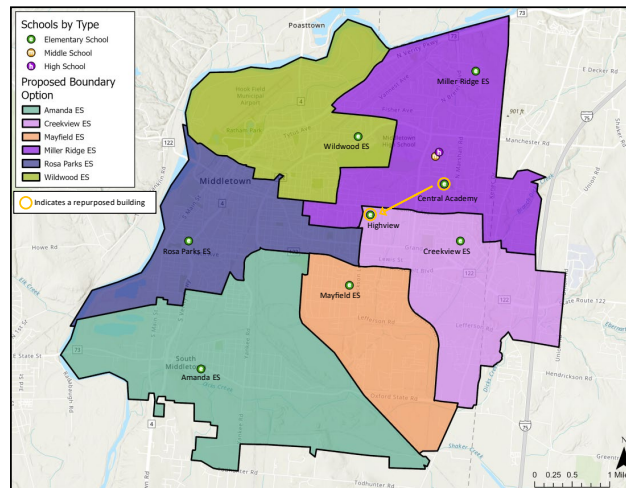
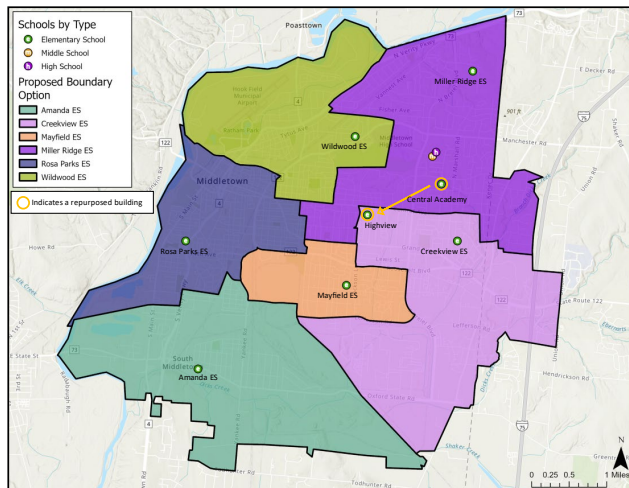
QR code will take you to survey



The online survey will be open through the end of December.

Please consider responding even if you are not impacted.

Feedback will be used to inform the boundary recommendation.





Thank you!



WOOLPERT