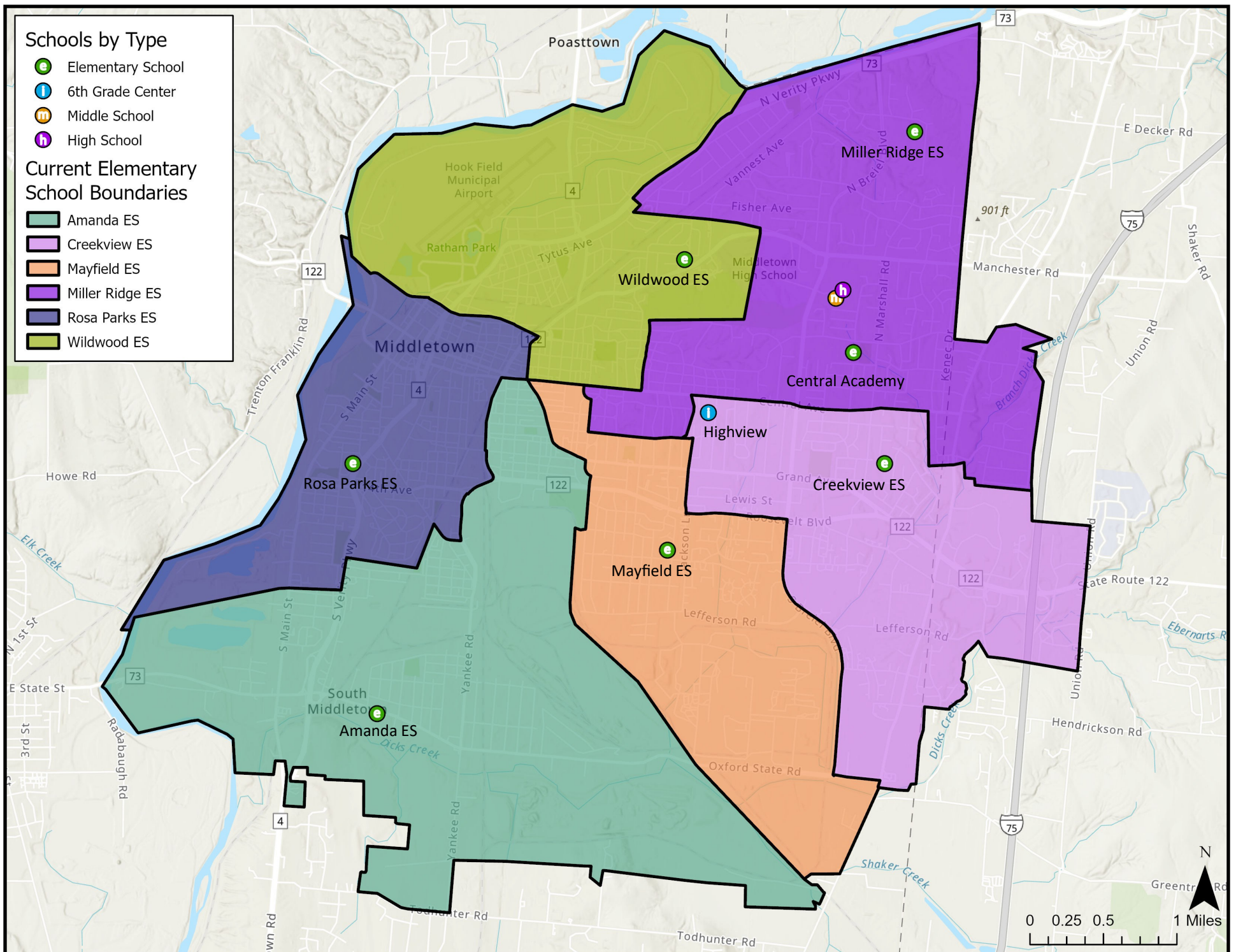


# Current Boundaries



School	Program Capacity	Live-In Enroll.	Live-In Utilization	Remaining Seats	2029-30 Projected Utilization
Central Academy	350	355	101%	-5	98%
Amanda ES	661	472	71%	189	69%
Highview	625	0	0%	625	0%
Creekview ES	583	465	80%	118	77%
Mayfield ES	625	607	97%	18	94%
Miller Ridge ES	583	416	71%	167	69%
Rosa Parks ES	897	496	55%	401	54%
Wildwood ES	625	480	77%	145	74%
<b>TOTAL</b>	<b>4,599</b>	<b>2,936</b>	<b>64%</b>	<b>1,663</b>	<b>69%</b>

Note: All enrollments represent grades K-6.

Walkability	
1,087	33%

Assigned to Closest School?		
1st Closest	2,436	74%
2nd Closest	523	16%
3rd Closest	49	1%
> 3rd Closest	271	8%

## Top 4 Criteria (from survey):

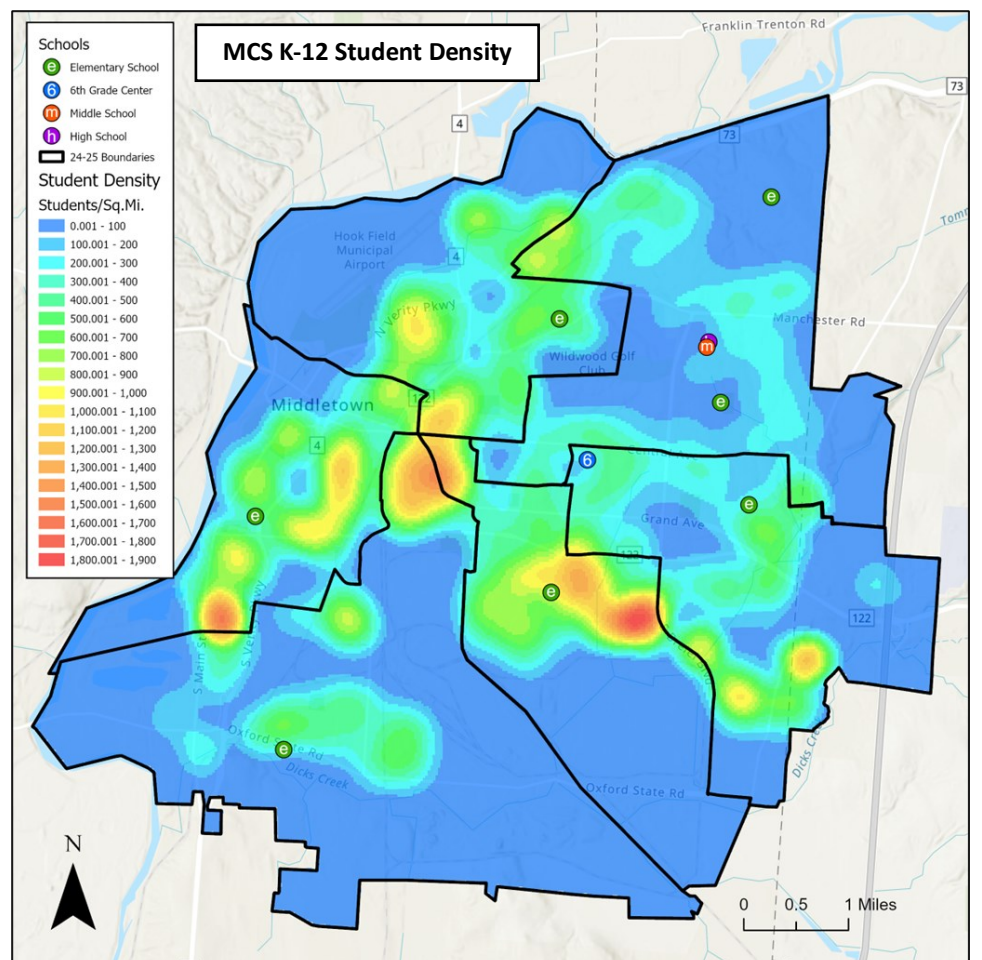
Attempt to create boundaries that assign students to their nearest school.

Attempt to create boundaries that assign entire neighborhoods to the same school.

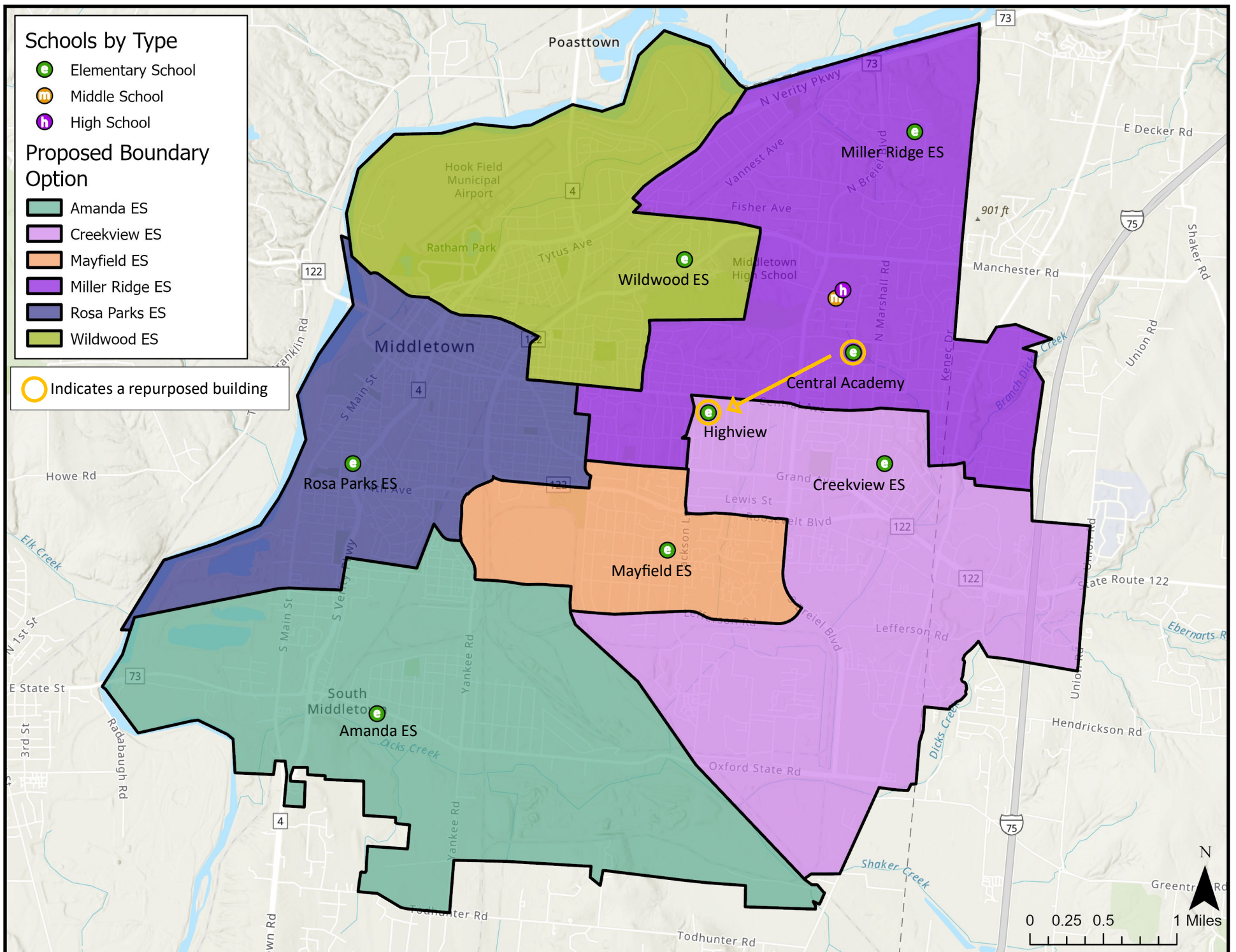
Attempt to modify boundaries in a way that impacts the fewest number of students as possible.

Attempt to create boundaries that balance enrollment among schools equitably.

This QR Code will take you to the community feedback survey



# Option 1



School	Program Capacity	Live-In Enroll.	Live-In Utilization	Remaining Seats	2029-30 Projected Utilization
Amanda ES	661	310	47%	351	45%
Central Academy at Highview	625	355	57%	270	55%
Creekview ES	583	474	81%	109	79%
Mayfield ES	625	518	83%	107	80%
Miller Ridge ES	583	438	75%	145	73%
Rosa Parks ES	897	716	80%	181	77%
Wildwood ES	625	480	77%	145	74%
<b>TOTAL</b>	<b>4,599</b>	<b>3,291</b>	<b>72%</b>	<b>1,308</b>	<b>69%</b>

Note: All enrollments represent grades K-6.

Walkability	
1,077	33%

Assigned to Closest School?		
1st Closest	2,388	73%
2nd Closest	644	20%
3rd Closest	126	4%
> 3rd Closest	121	4%

Students Moved (K-6 total)
296

Value does not include Central Academy program moving to Highview

## Option Overview

- Central Academy would move to the Highview building. All values assume that Central Academy (now at Highview) continues to enroll a similar number of students from each attendance boundary. The facility that Central Academy is currently within would be repurposed for ELC space.
- ELC classrooms would move to the current Central Academy building.
- The Amanda Elementary boundary is reduced to allow more students to attend a school closer to home.

### Benefits:

- 6th graders remain in an elementary setting
- 85% of students who attend Central Academy live closer to the Highview building than the current Central Academy building
- Bus rides would improve for some
- Cost savings will be realized by moving Central Academy to Highview and the ELC to Central Academy
- Middletown's center neighborhoods would be split among 5 schools rather than all 6 elementary schools

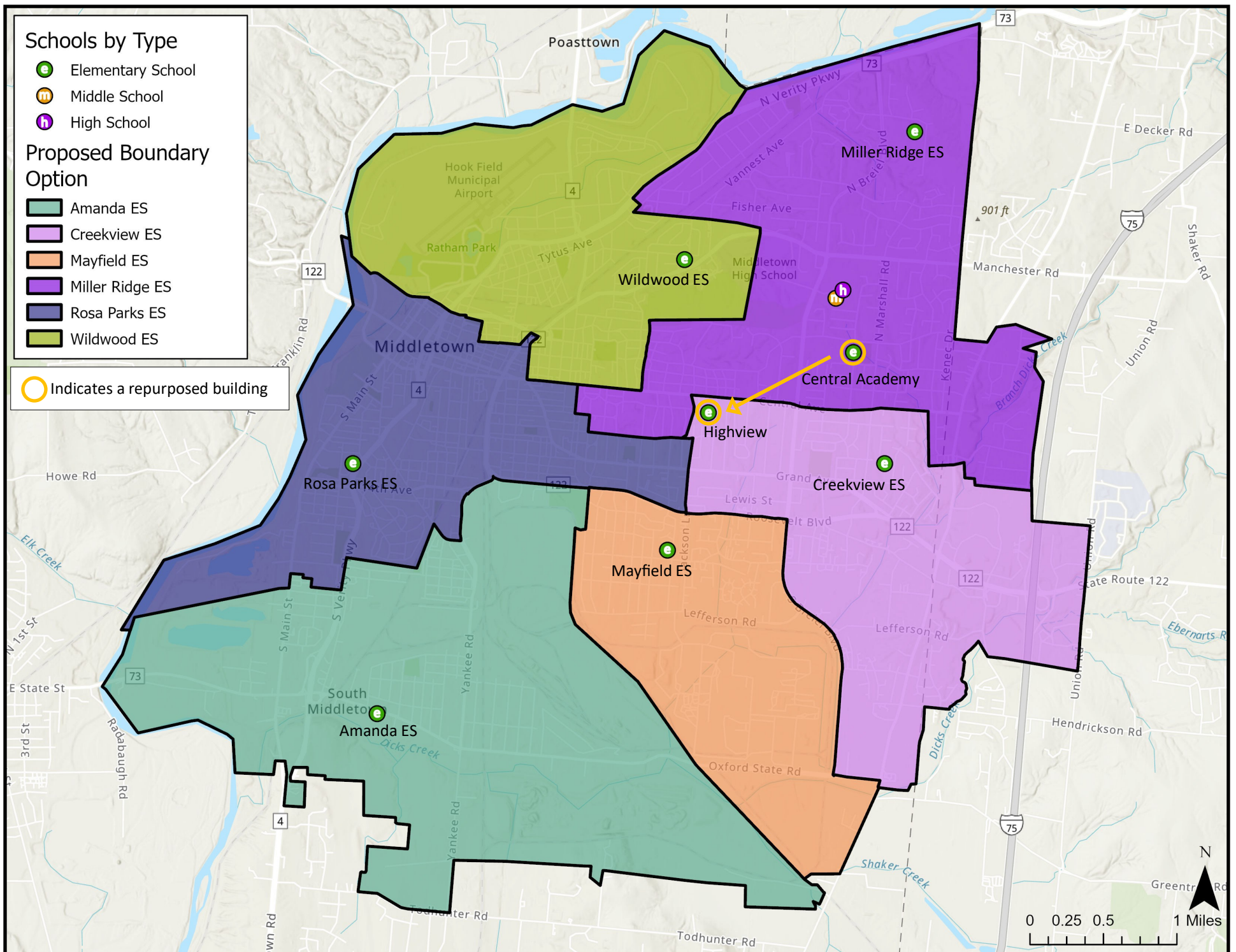
### Challenges:

- Fewer students would be able to walk to school than current (10 student difference)
- Fewer students would attend their first geographically closest school, but more students would attend their second or third closest school

		Proposed 25-26 Boundary							
		Central Academy	Amanda ES	Creekview ES	Highview ES	Mayfield ES	Miller Ridge ES	Rosa Parks ES	Wildwood ES
Current 24-25 Boundary	Central Academy	-	-	-	355	-	-	-	-
	Amanda ES	-	334	-	-	-	-	185	-
	Creekview ES	-	-	527	-	-	-	-	-
	Highview ES	-	-	-	-	-	-	-	-
	Mayfield ES	-	-	10	-	559	35	66	-
	Miller Ridge ES	-	-	-	-	-	463	-	-
	Rosa Parks ES	-	-	-	-	-	-	560	-
Wildwood ES	-	-	-	-	-	-	-	540	

Enrollments shown in gray indicate students that are remaining at their current school.

# Option 2



School	Program Capacity	Live-In Enroll.	Live-In Utilization	Remaining Seats	2029-30 Projected Utilization
Amanda ES	661	324	49%	337	47%
Central Academy at Highview	625	355	57%	270	55%
Creekview ES	583	465	80%	118	77%
Mayfield ES	625	492	79%	133	76%
Miller Ridge ES	583	418	72%	165	70%
Rosa Parks ES	897	738	82%	159	80%
Wildwood ES	625	499	80%	126	77%
<b>TOTAL</b>	<b>4,599</b>	<b>3,291</b>	<b>72%</b>	<b>1,308</b>	<b>69%</b>

Note: All enrollments represent grades K-6.

Walkability	
1,084	33%

Assigned to Closest School?		
1st Closest	2,352	71%
2nd Closest	648	20%
3rd Closest	133	4%
> 3rd Closest	146	4%

Students Moved (K-6 total)
360

Value does not include Central Academy program moving to Highview

## Option Overview

- Central Academy would move to the Highview building. All values assume that Central Academy (now at Highview) continues to enroll a similar number of students from each attendance boundary. The facility that Central Academy is currently within would be repurposed for ELC space.
- ELC classrooms would move to the current Central Academy building.
- The Amanda Elementary boundary is reduced to allow more students to attend a school closer to home.

### Benefits:

- 6th graders remain in an elementary setting
- 85% of students who attend Central Academy live closer to the Highview building than the current Central Academy building
- Bus rides would improve for some
- Cost savings will be realized by moving Central Academy to Highview and the ELC to Central Academy
- Middletown's center neighborhoods would be split among 5 schools rather than all 6 elementary schools

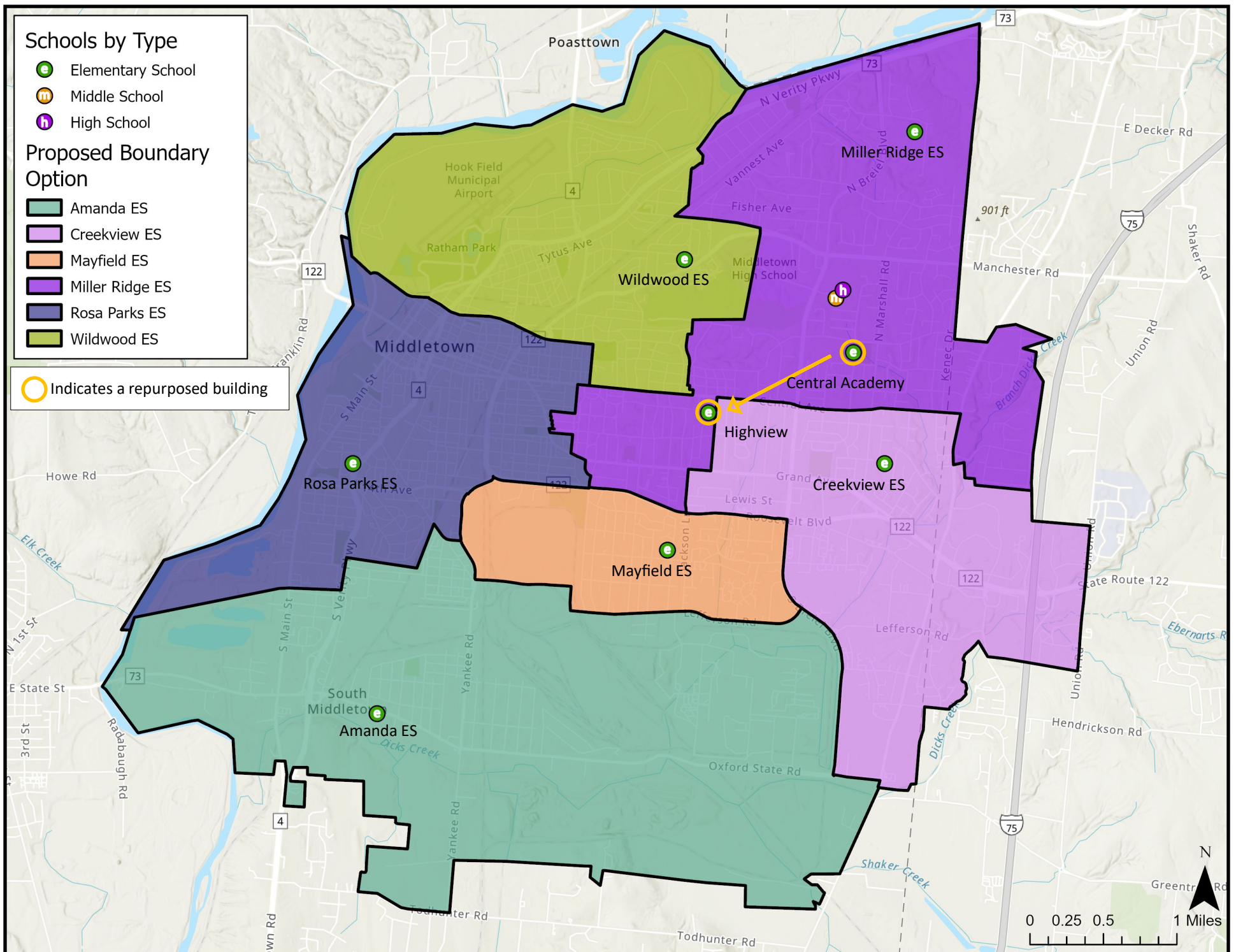
### Challenges:

- Fewer students would be able to walk to school than current (3 student difference)
- Fewer students would attend their first geographically closest school, but more students would attend their second or third closest school
- This option moves the second greatest number of students

		Proposed 25-26 Boundary							
		Central Academy	Amanda ES	Creekview ES	Highview ES	Mayfield ES	Miller Ridge ES	Rosa Parks ES	Wildwood ES
Current 24-25 Boundary	Central Academy	-	-	-	355	-	-	-	-
	Amanda ES	-	334	-	-	-	-	185	-
	Creekview ES	-	-	527	-	-	-	-	-
	Highview ES	-	-	-	-	-	-	-	-
	Mayfield ES	-	-	-	-	531	4	135	-
	Miller Ridge ES	-	-	-	-	-	463	-	-
	Rosa Parks ES	-	14	-	-	-	-	524	22
Wildwood ES	-	-	-	-	-	-	-	540	

Enrollments shown in gray indicate students that are remaining at their current school.

# Option 3



School	Program Capacity	Live-In Enroll.	Live-In Utilization	Remaining Seats	2029-30 Projected Utilization
Amanda ES	661	319	48%	342	47%
Central Academy at Highview	625	355	57%	270	55%
Creekview ES	583	483	83%	100	80%
Mayfield ES	625	483	77%	142	75%
Miller Ridge ES	583	429	74%	154	71%
Rosa Parks ES	897	746	83%	151	81%
Wildwood ES	625	476	76%	149	74%
<b>TOTAL</b>	<b>4,599</b>	<b>3,291</b>	<b>72%</b>	<b>1,308</b>	<b>69%</b>

Note: All enrollments represent grades K-6.

Walkability	
1,110	34%

Assigned to Closest School?		
1st Closest	2,371	72%
2nd Closest	584	18%
3rd Closest	120	4%
> 3rd Closest	204	6%

Students Moved (K-6 total)
522

Value does not include Central Academy program moving to Highview

## Overview

- Central Academy would move to the Highview building. All values assume that Central Academy (now at Highview) continues to enroll a similar number of students from each attendance boundary. The facility that Central Academy is currently within would be repurposed for ELC space.
- ELC classrooms would move to the current Central Academy building.
- The Amanda Elementary boundary is reduced to allow more students to attend a school closer to home.

## Benefits:

- 6th graders remain in an elementary setting
- 85% of students who attend Central Academy live closer to the Highview building than the current Central Academy building
- Bus rides would improve for some
- Cost savings will be realized by moving Central Academy to Highview and the ELC to Central Academy
- Middletown's center neighborhoods would be split among 5 schools rather than all 6 elementary schools
- Improves walkability

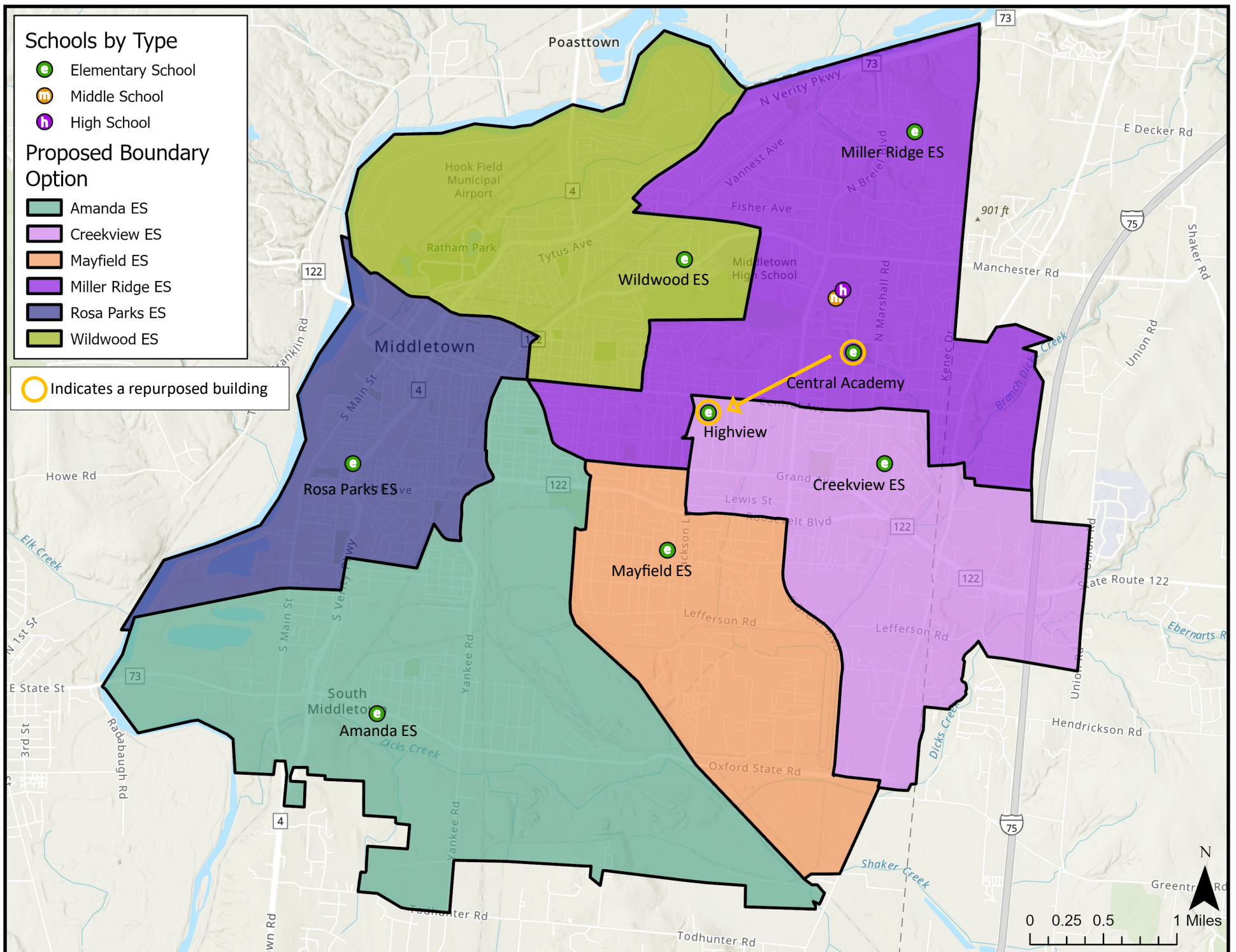
## Challenges:

- Fewer students would attend their first geographically closest school, but more students would attend their second or third closest school
- Moves the greatest number of students

		Proposed 25-26 Boundary							
		Central Academy	Amanda ES	Creekview ES	Highview ES	Mayfield ES	Miller Ridge ES	Rosa Parks ES	Wildwood ES
Current 24-25 Boundary	Central Academy	-	-	-	355	-	-	-	-
	Amanda ES	-	334	-	-	-	-	185	-
	Creekview ES	-	-	516	-	-	11	-	-
	Highview ES	-	-	-	-	-	-	-	-
	Mayfield ES	-	10	-	-	521	110	29	-
	Miller Ridge ES	-	-	33	-	-	363	-	67
	Rosa Parks ES	-	-	-	-	-	-	560	-
Wildwood ES	-	-	-	-	-	-	77	463	

Enrollments shown in gray indicate students that are remaining at their current school.

# Option 4



School	Program Capacity	Live-In Enroll.	Live-In Utilization	Remaining Seats	2029-30 Projected Utilization
Amanda ES	661	472	71%	189	69%
Central Academy at Highview	625	355	57%	270	55%
Creekview ES	583	465	80%	118	77%
Mayfield ES	625	527	84%	98	82%
Miller Ridge ES	583	496	85%	87	82%
Rosa Parks ES	897	496	55%	401	54%
Wildwood ES	625	480	77%	145	74%
<b>TOTAL</b>	<b>4,599</b>	<b>3,291</b>	<b>72%</b>	<b>1,308</b>	<b>69%</b>

Note: All enrollments represent grades K-6.

Walkability	
1,087	33%

Assigned to Closest School?		
1st Closest	2,344	71%
2nd Closest	514	16%
3rd Closest	49	1%
> 3rd Closest	372	11%

Students Moved (K-6 total)
101

Value does not include Central Academy program moving to Highview

## Overview

- Central Academy would move to the Highview building. All values assume that Central Academy (now at Highview) continues to enroll a similar number of students from each attendance boundary. The facility that Central Academy is currently within would be repurposed for ELC space.
- ELC classrooms would move to the current Central Academy building.
- The Rosa Parks Elementary boundary remains the same as it is today in order to reduce the number of students moved.

## Benefits:

- 6th graders remain in an elementary setting
- 85% of students who attend Central Academy live closer to the Highview building than the current Central Academy building
- Moves the fewest number of students
- Cost savings will be realized by moving Central Academy to Highview and the ELC to Central Academy
- No change in walkability

## Challenges:

- Assigns the fewest students to their 1st closest school
- Greatest number of students would attend their 4th, 5th, or 6th closest school (out of 6)
- Miller Ridge Elementary has the greatest potential for growth. This option may not offer much longevity should development continue
- Middletown's center neighborhoods would remain split among all 6 neighborhood elementary schools

		Proposed 25-26 Boundary							
		Central Academy	Amanda ES	Creekview ES	Highview ES	Mayfield ES	Miller Ridge ES	Rosa Parks ES	Wildwood ES
Current 24-25 Boundary	Central Academy	-	-	-	355	-	-	-	-
	Amanda ES	-	519	-	-	-	-	-	-
	Creekview ES	-	-	527	-	-	-	-	-
	Highview ES	-	-	-	-	-	-	-	-
	Mayfield ES	-	-	-	-	569	101	-	-
	Miller Ridge ES	-	-	-	-	-	463	-	-
	Rosa Parks ES	-	-	-	-	-	-	560	-
Wildwood ES	-	-	-	-	-	-	-	540	

Enrollments shown in gray indicate students that are remaining at their current school.