



**LICKING HEIGHTS**  
LOCAL SCHOOL DISTRICT

**LICKING HEIGHTS LOCAL SCHOOL DISTRICT  
DEMOGRAPHICS & BOUNDARY RECOMMENDATION**

FEBRUARY 20, 2024



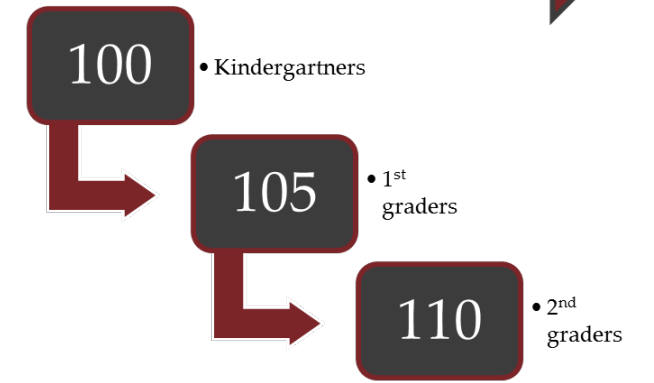




# DEMOGRAPHICS REPORTS



# ▶ ENROLLMENT PROJECTIONS

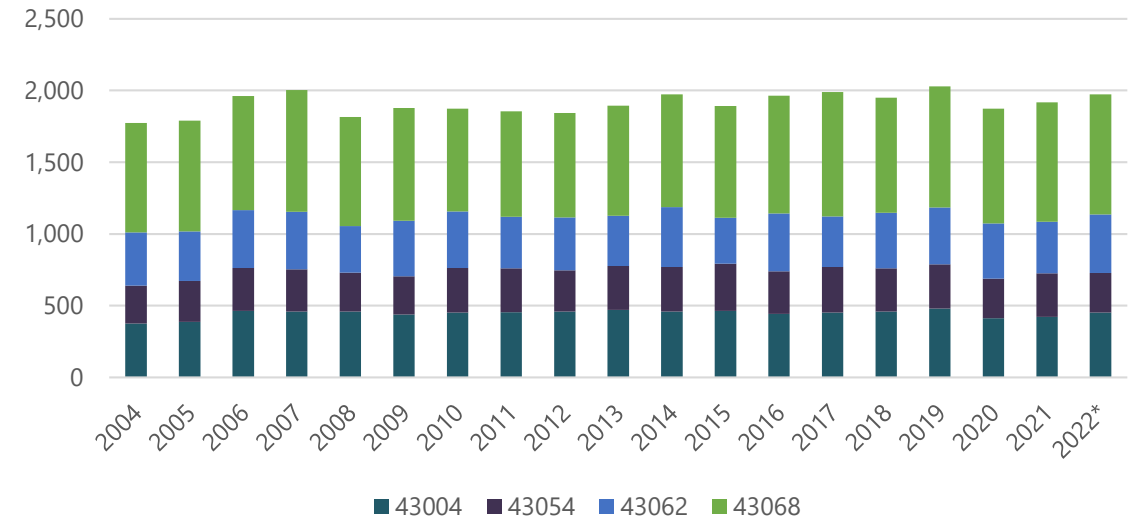


## Historical Enrollment - District-wide

Grade	2014-15	2015-16	2016-17	2017-18	2018-19	2019-20	2020-21	2021-22	2022-23	2023-24
PS	125	117	129	104	140	153	90	131	146	190
K	293	331	340	390	399	415	379	412	395	377
1	331	331	353	371	391	415	414	402	431	403
2	322	339	332	350	393	412	419	397	411	428
3	313	329	352	340	348	411	396	414	400	410
4	323	323	322	352	342	351	415	399	421	406
5	316	333	335	342	353	355	354	413	414	425
6	343	316	335	363	348	376	352	355	412	418
7	297	346	319	339	350	362	376	356	381	416
8	297	312	341	330	336	349	351	377	364	386
9	296	338	338	386	364	375	395	385	399	369
10	268	289	317	299	324	320	340	381	398	403
11	221	273	274	320	304	336	306	338	371	395
12	12	223	274	245	294	293	317	322	317	362
13	0	0	1	0	0	0	0	0	0	1
23	2	4	3	7	10	7	6	3	4	5
<b>K - 12 Total</b>	<b>3,632</b>	<b>4,083</b>	<b>4,232</b>	<b>4,427</b>	<b>4,546</b>	<b>4,770</b>	<b>4,814</b>	<b>4,951</b>	<b>5,114</b>	<b>5,198</b>
<b>Grand Total</b>	<b>3,759</b>	<b>4,204</b>	<b>4,365</b>	<b>4,538</b>	<b>4,696</b>	<b>4,930</b>	<b>4,910</b>	<b>5,085</b>	<b>5,264</b>	<b>5,394</b>

Source: Licking Heights Local School District

## LICKING HEIGHTS LOCAL SCHOOL DISTRICT ZIP CODES RESIDENT LIVE BIRTH COUNTS



## Historical Enrollment - District-wide

Grade	2014-15	2015-16	2016-17	2017-18	2018-19	2019-20	2020-21	2021-22	2022-23	2023-24
PS	125	117	129	104	140	153	90	131	146	190
K	293	331	340	390	399	415	379	412	395	377
1 - 4	1,289	1,322	1,359	1,413	1,474	1,589	1,644	1,612	1,663	1,647
5 - 6	659	649	670	705	701	731	706	768	826	843
7 - 8	594	658	660	669	686	711	727	733	745	802
9 - 12	797	1,123	1,203	1,250	1,286	1,324	1,358	1,426	1,485	1,529
other	2	4	4	7	10	7	6	3	4	6
<b>K - 12 Total</b>	<b>3,632</b>	<b>4,083</b>	<b>4,232</b>	<b>4,427</b>	<b>4,546</b>	<b>4,770</b>	<b>4,814</b>	<b>4,951</b>	<b>5,114</b>	<b>5,198</b>
<b>Grand Total</b>	<b>3,759</b>	<b>4,204</b>	<b>4,365</b>	<b>4,538</b>	<b>4,696</b>	<b>4,930</b>	<b>4,910</b>	<b>5,085</b>	<b>5,264</b>	<b>5,394</b>

Source: Licking Heights Local School District





# ► ENROLLMENT PROJECTIONS

**Projected Enrollment - Recommended - District-wide**

Grade	2024-25	2025-26	2026-27	2027-28	2028-29	2029-30	2030-31	2031-32	2032-33	2033-34
PS	190	190	190	190	190	190	190	190	190	190
K	406	374	383	395	400	401	403	404	405	407
1	390	420	388	397	409	414	415	417	418	420
2	405	392	422	389	399	410	416	417	419	420
3	427	404	391	421	389	398	410	415	417	418
4	416	434	410	398	428	395	404	416	422	423
5	412	423	441	417	404	434	401	411	423	428
6	428	415	426	443	419	406	437	404	413	425
7	427	437	424	434	453	428	415	446	412	422
8	422	433	443	430	441	459	434	421	453	418
9	403	441	452	463	449	460	480	454	440	473
10	373	408	446	457	468	454	466	485	459	445
11	401	371	405	443	455	465	451	463	482	456
12	384	390	361	394	431	442	452	439	450	469
13	1	1	1	1	1	1	1	1	1	1
23	5	5	5	5	5	5	5	5	5	5
<b>K - 12 Total</b>	<b>5,294</b>	<b>5,342</b>	<b>5,392</b>	<b>5,481</b>	<b>5,545</b>	<b>5,566</b>	<b>5,584</b>	<b>5,592</b>	<b>5,613</b>	<b>5,624</b>
<b>Grand Total</b>	<b>5,490</b>	<b>5,538</b>	<b>5,588</b>	<b>5,677</b>	<b>5,741</b>	<b>5,762</b>	<b>5,780</b>	<b>5,788</b>	<b>5,809</b>	<b>5,820</b>

Source: Cooperative Strategies

**Projected Enrollment - Recommended - District-wide**

Grade	2024-25	2025-26	2026-27	2027-28	2028-29	2029-30	2030-31	2031-32	2032-33	2033-34
PS	190	190	190	190	190	190	190	190	190	190
K	406	374	383	395	400	401	403	404	405	407
1 - 4	1,638	1,650	1,611	1,605	1,625	1,617	1,645	1,665	1,676	1,681
5 - 6	840	838	867	860	823	840	838	815	836	853
7 - 8	849	870	867	864	894	887	849	867	865	840
9 - 12	1,561	1,610	1,664	1,757	1,803	1,821	1,849	1,841	1,831	1,843
other	6	6	6	6	6	6	6	6	6	6
<b>K - 12 Total</b>	<b>4,888</b>	<b>4,968</b>	<b>5,009</b>	<b>5,086</b>	<b>5,145</b>	<b>5,165</b>	<b>5,181</b>	<b>5,188</b>	<b>5,208</b>	<b>5,217</b>
<b>Grand Total</b>	<b>5,490</b>	<b>5,538</b>	<b>5,588</b>	<b>5,677</b>	<b>5,741</b>	<b>5,762</b>	<b>5,780</b>	<b>5,788</b>	<b>5,809</b>	<b>5,820</b>

Source: Cooperative Strategies

**Projected Enrollment - High - District-wide**

Grade	2024-25	2025-26	2026-27	2027-28	2028-29	2029-30	2030-31	2031-32	2032-33	2033-34
PS	190	190	190	190	190	190	190	190	190	190
K	407	375	384	396	401	402	404	405	406	408
1	392	423	390	400	411	417	418	420	421	422
2	407	396	427	394	403	415	421	422	424	425
3	430	409	398	429	396	405	417	423	424	426
4	416	437	415	404	436	402	412	424	429	431
5	415	426	447	425	413	446	411	421	433	439
6	430	420	431	452	430	418	451	416	426	439
7	435	448	437	449	471	447	435	469	433	444
8	423	442	455	445	456	479	455	443	477	441
9	411	450	471	484	473	486	509	484	471	508
10	376	419	459	480	494	483	495	519	494	480
11	401	374	416	456	477	491	480	492	516	491
12	391	397	370	412	452	472	486	475	487	511
13	1	1	1	1	1	1	1	1	1	1
23	5	5	5	5	5	5	5	5	5	5
<b>K - 12 Total</b>	<b>5,334</b>	<b>5,416</b>	<b>5,500</b>	<b>5,626</b>	<b>5,713</b>	<b>5,763</b>	<b>5,794</b>	<b>5,813</b>	<b>5,841</b>	<b>5,865</b>
<b>Grand Total</b>	<b>5,530</b>	<b>5,612</b>	<b>5,696</b>	<b>5,822</b>	<b>5,909</b>	<b>5,959</b>	<b>5,990</b>	<b>6,009</b>	<b>6,037</b>	<b>6,061</b>

Source: Cooperative Strategies

**Projected Enrollment - High - District-wide**

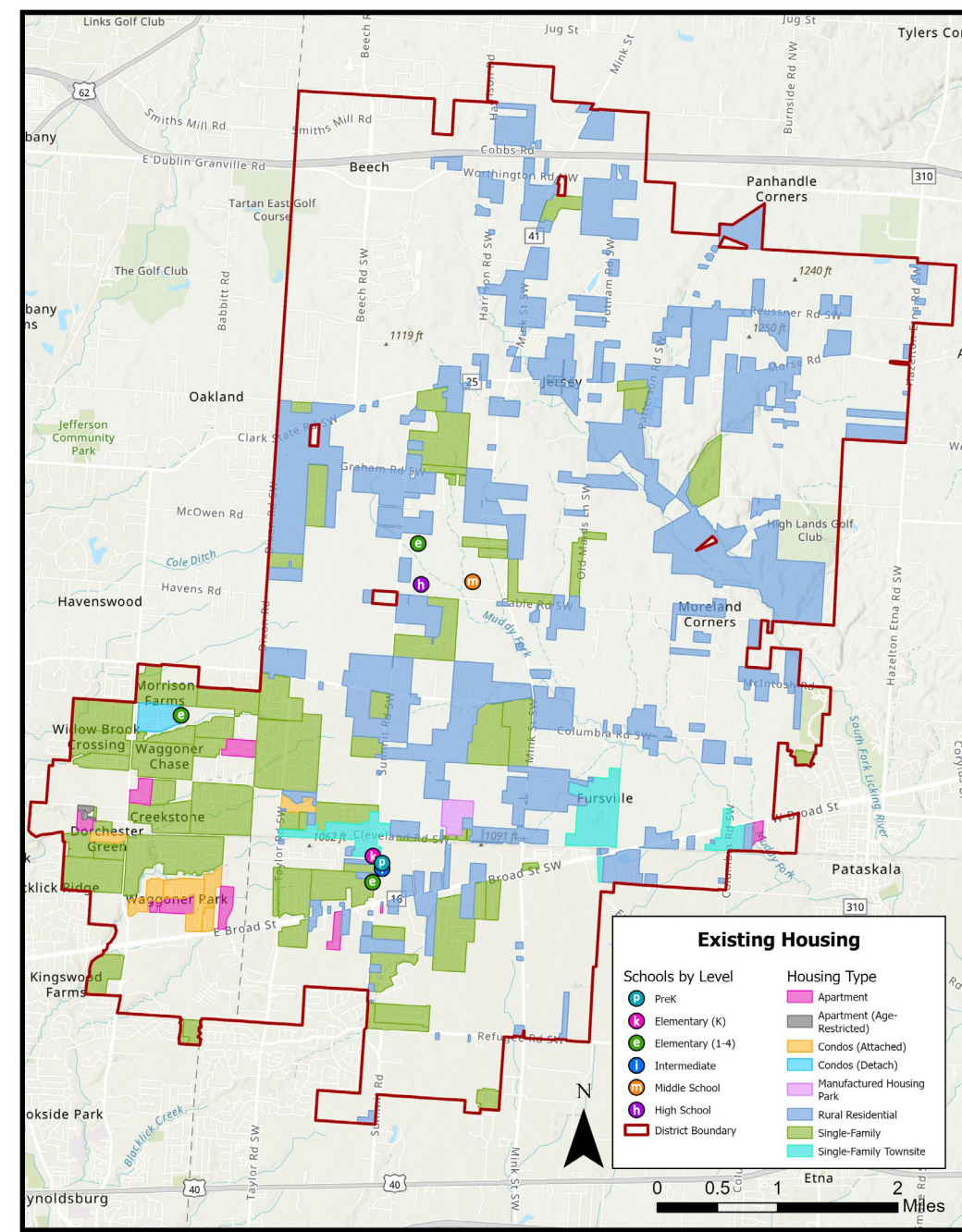
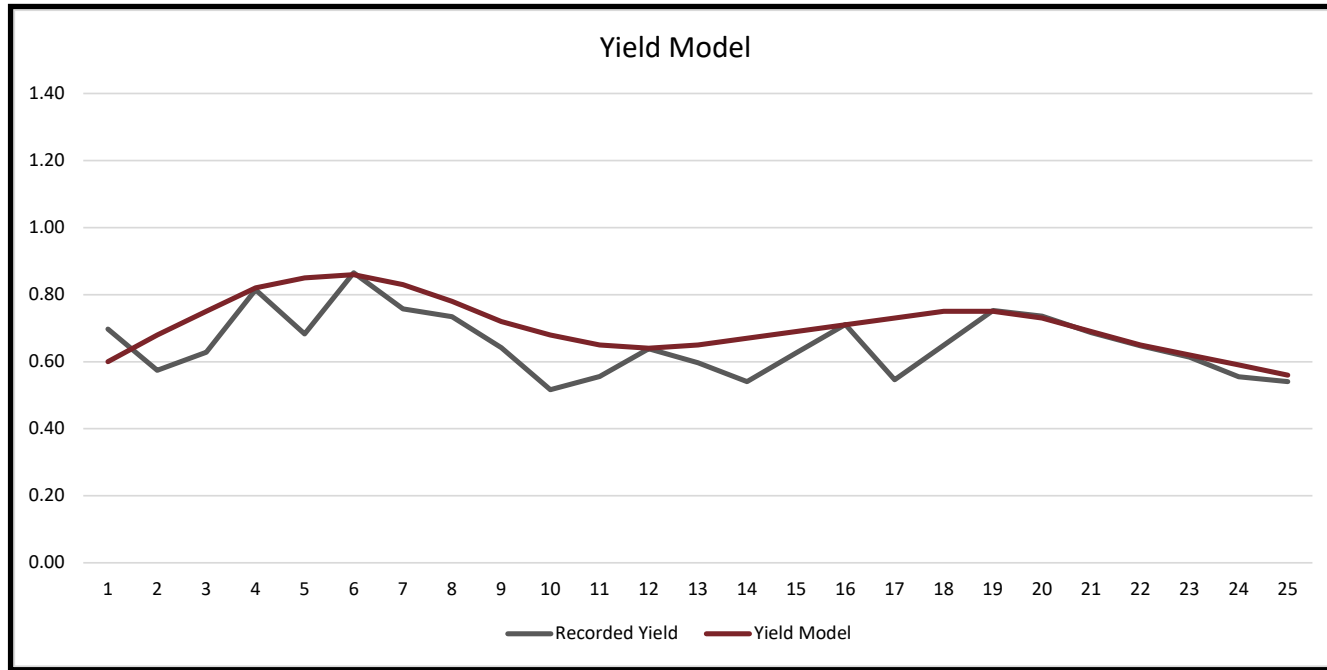
Grade	2024-25	2025-26	2026-27	2027-28	2028-29	2029-30	2030-31	2031-32	2032-33	2033-34
PS	190	190	190	190	190	190	190	190	190	190
K	407	375	384	396	401	402	404	405	406	408
1 - 4	1,645	1,665	1,630	1,627	1,646	1,639	1,668	1,689	1,698	1,704
5 - 6	845	846	878	877	843	864	862	837	859	878
7 - 8	858	890	892	894	927	926	890	912	910	885
9 - 12	1,579	1,640	1,716	1,832	1,896	1,932	1,970	1,970	1,968	1,990
other	6	6	6	6	6	6	6	6	6	6
<b>K - 12 Total</b>	<b>5,334</b>	<b>5,416</b>	<b>5,500</b>	<b>5,626</b>	<b>5,713</b>	<b>5,763</b>	<b>5,794</b>	<b>5,813</b>	<b>5,841</b>	<b>5,865</b>
<b>Grand Total</b>	<b>5,530</b>	<b>5,612</b>	<b>5,696</b>	<b>5,822</b>	<b>5,909</b>	<b>5,959</b>	<b>5,990</b>	<b>6,009</b>	<b>6,037</b>	<b>6,061</b>

Source: Cooperative Strategies



# HOUSING STUDY- EXISTING HOUSING

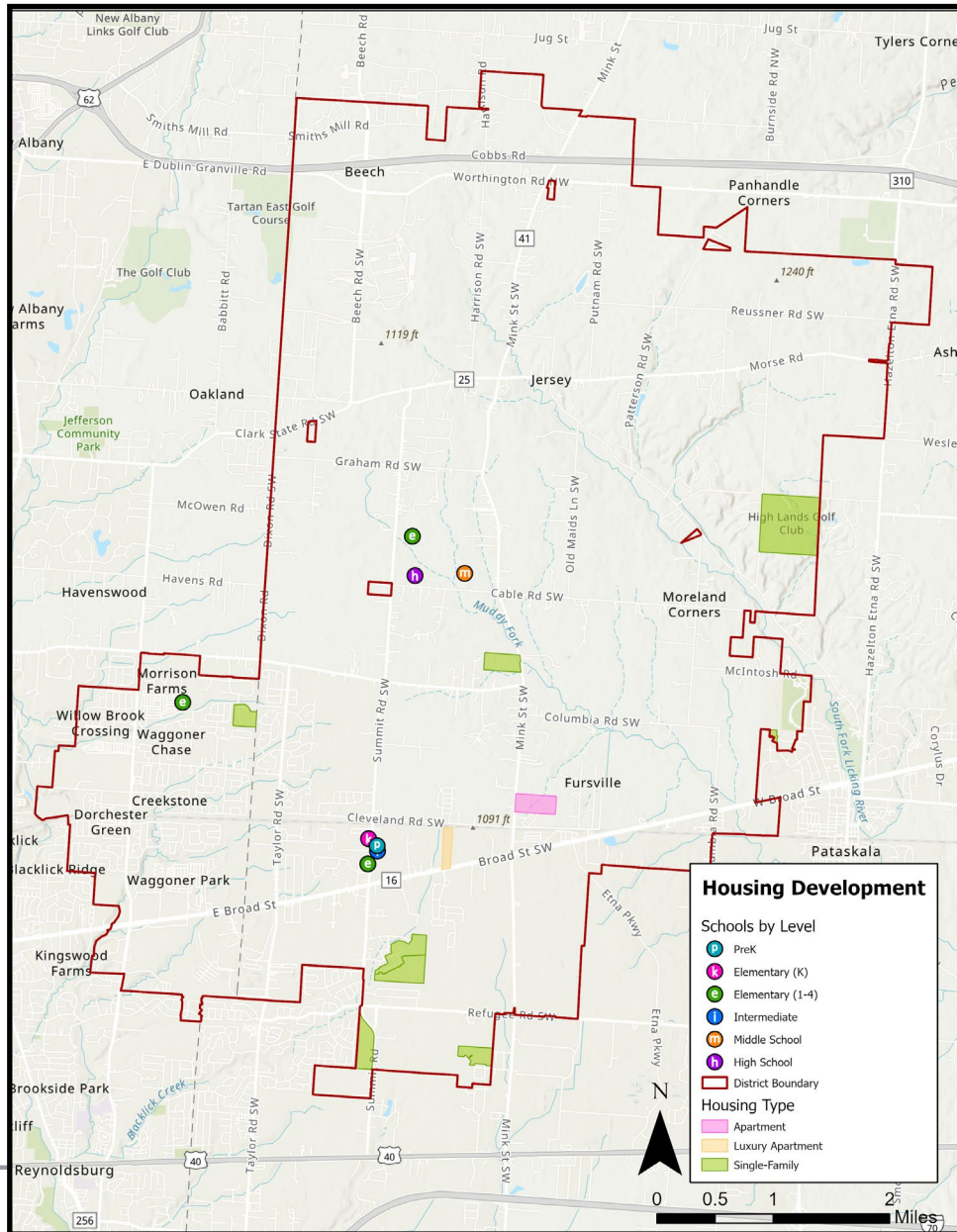
Housing Type	23-24 Units	23-24 Students	23-24 Yield
Apartment	1,342	401	0.30
Condominium	1,423	271	0.19
Mobile Home Park	106	47	0.44
Rural Residential (Single-Family)	902	227	0.25
Subdivided Single Family	6,486	3,880	0.60
Single-Family Townsite	269	102	0.38
<b>TOTAL</b>	<b>10,528</b>	<b>4,928</b>	<b>0.47</b>



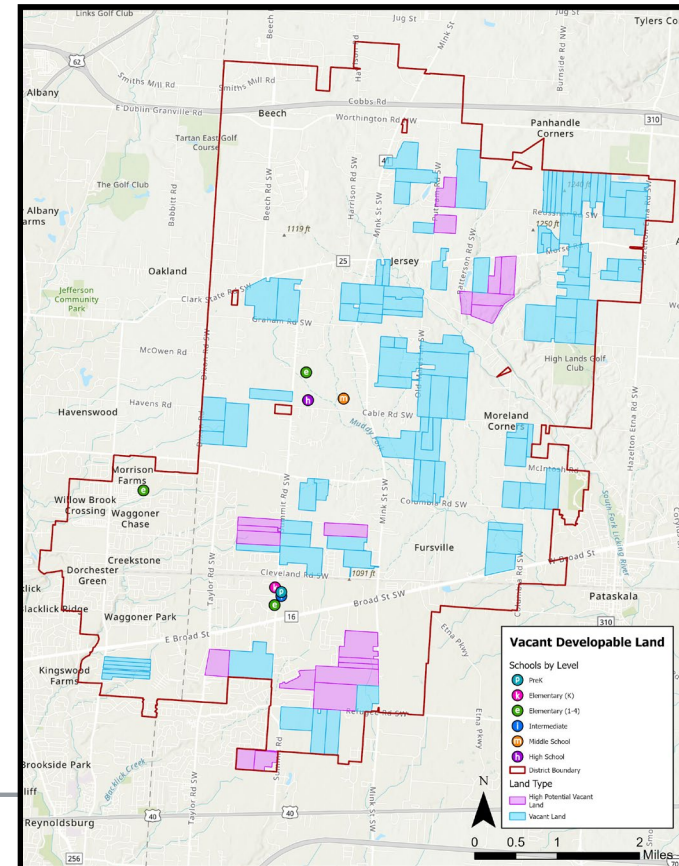




# HOUSING DEVELOPMENTS

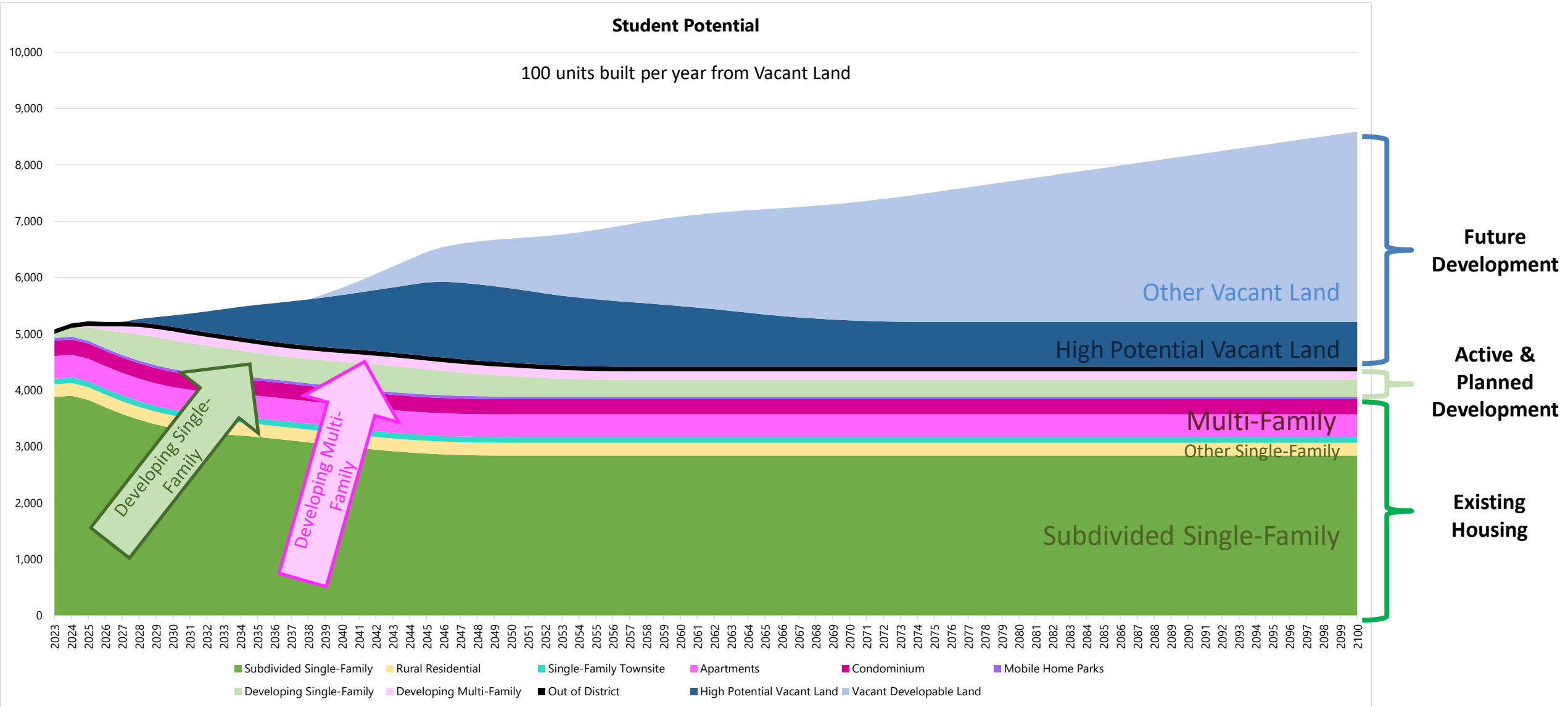


Development Information			Units at Build Out	Maximum Enrollment	Mature Enrollment
Name	Housing Type	Project Status			
Maplewood North	Single-Family	Under Construction	149	128	64
Morrison Farms East	Single-Family	Under Construction	58	50	25
Homestead of The Border Place Sec. 3	Single-Family	Under Construction	98	84	42
Heron Manor Sec. 4	Single-Family	Proposed	7	6	3
Royal Acres Sec. 2	Single-Family	Approved	40	34	17
Mink St Proposal	Single-Family	Proposed	52	45	22
The Meadows at Highlands	Single-Family	Proposed	24	21	10
Homestead of The Border Place Sec. 4	Single-Family	Under Review	89	77	38
Redwood Pataskala Mink St	Apartment	Proposed	231	69	69
13448 E Broad St. SW (Christoff)	Apartment	Proposed	288	86	86





# STUDENT POTENTIAL ANALYSIS





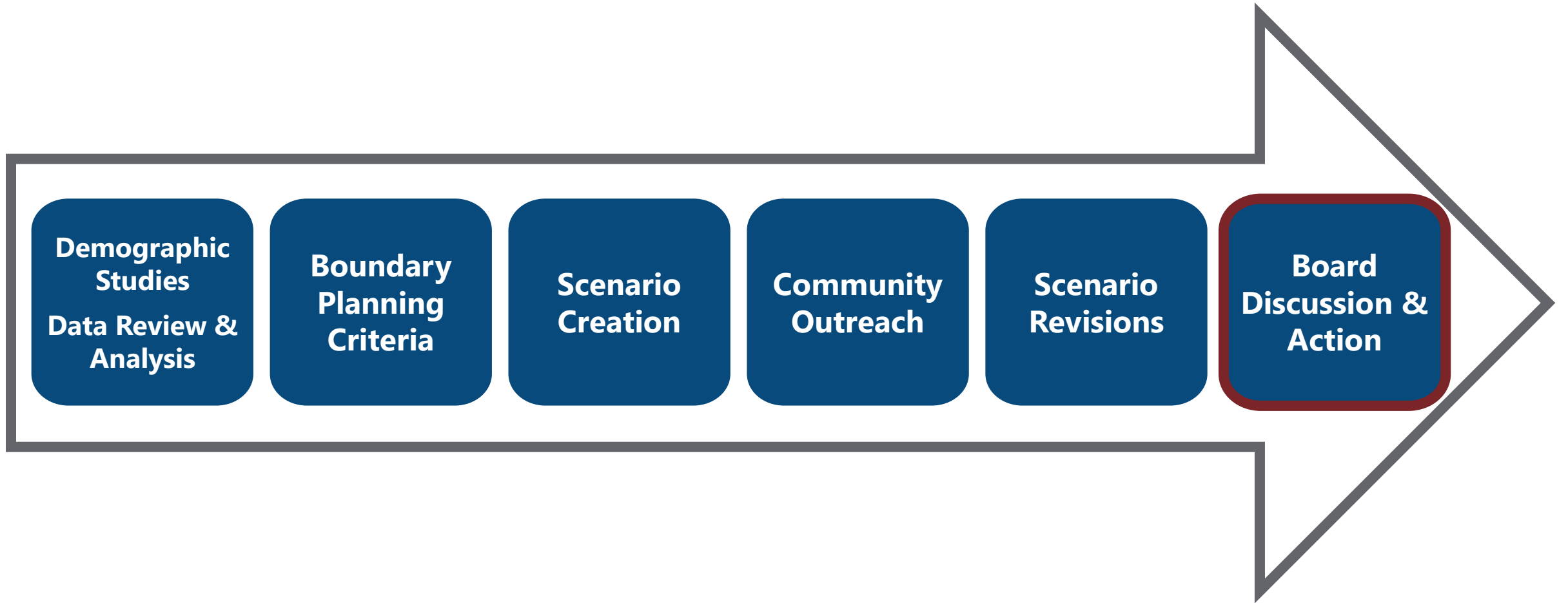


# REDISTRICTING PROCESS





## ▶ BOUNDARY CHANGES





# BOUNDARY OPTIONS



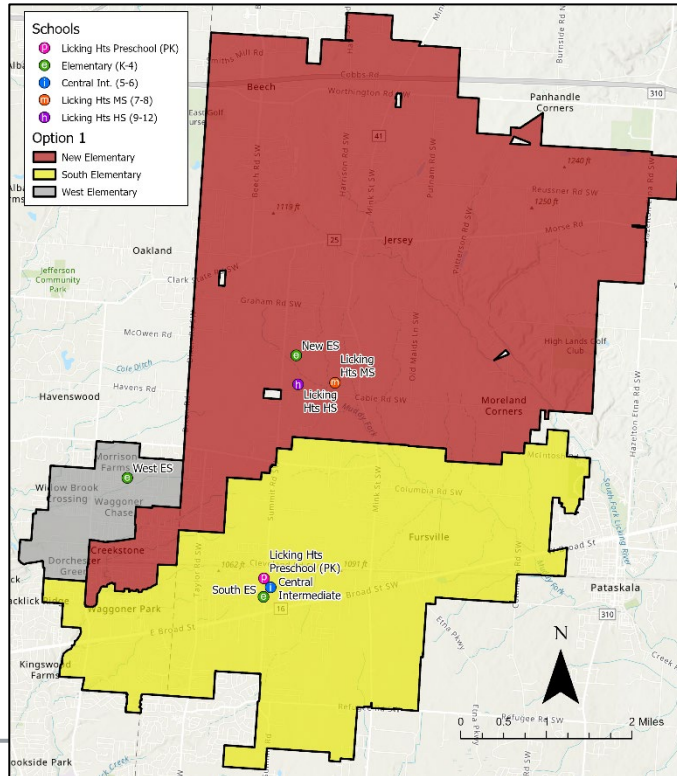


# ▶ BOUNDARY OPTIONS

OPTION 1				
School	Capacity	Live-In Enrollment	Utilization (using current students only)	Future Utilization (includes developments)
LH South (K-4)	800	586	73%	88%
LH West (K-4)	850	690	81%	83%
New K-4	900	675	75%	75%
<b>ES Subtotal</b>	<b>2,550</b>	<b>1,951</b>	<b>77%</b>	<b>82%</b>

723 Students Moved

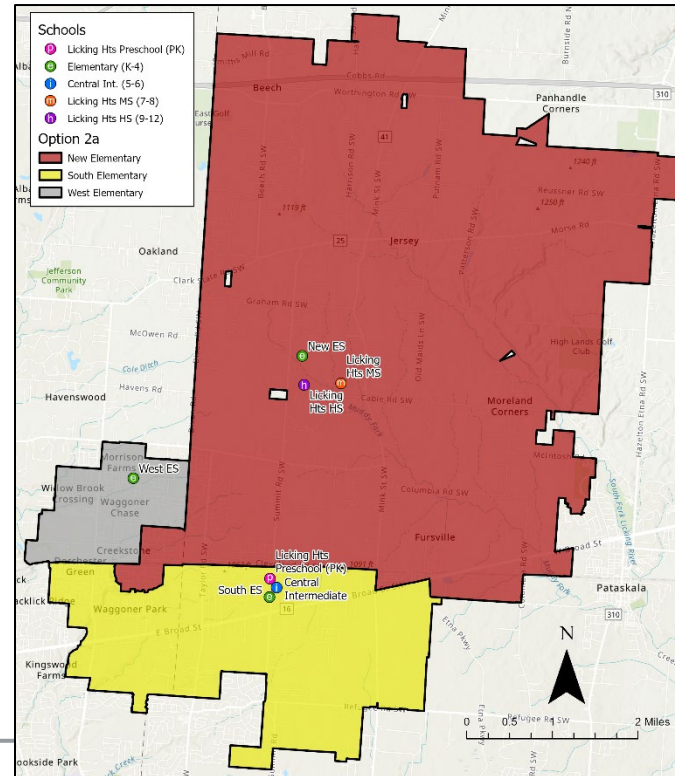
## Option 1



OPTION 2				
School	Capacity	Live-In Enrollment	Utilization (using current students only)	Future Utilization (includes developments)
LH South (K-4)	800	556	70%	84%
LH West (K-4)	850	712	84%	86%
New K-4	900	683	76%	76%
<b>ES Subtotal</b>	<b>2,550</b>	<b>1,951</b>	<b>77%</b>	<b>82%</b>

834 Students Moved

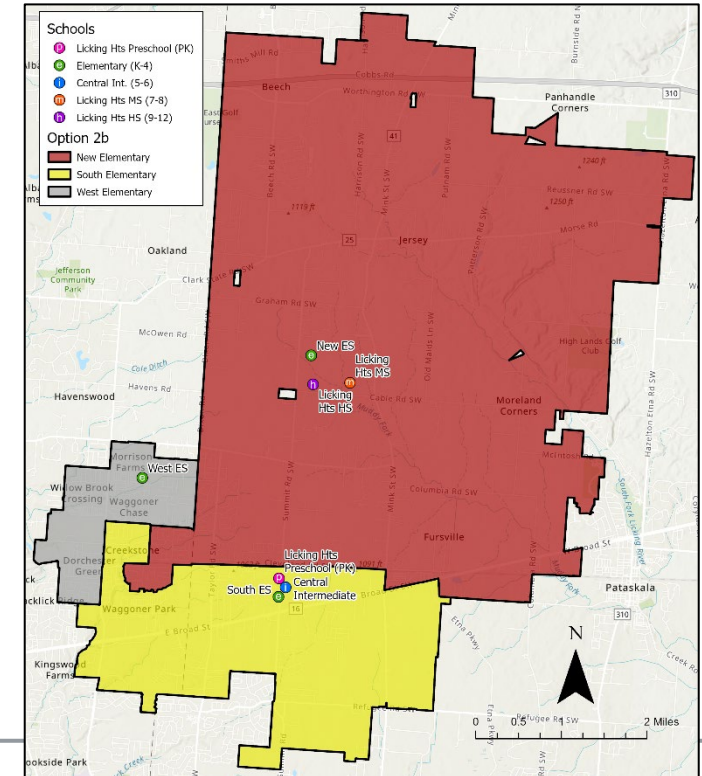
## Option 2



OPTION 3				
School	Capacity	Live-In Enrollment	Utilization (using current students only)	Future Utilization (includes developments)
LH South (K-4)	800	549	69%	83%
LH West (K-4)	850	719	85%	86%
New K-4	900	683	76%	76%
<b>ES Subtotal</b>	<b>2,550</b>	<b>1,951</b>	<b>77%</b>	<b>82%</b>

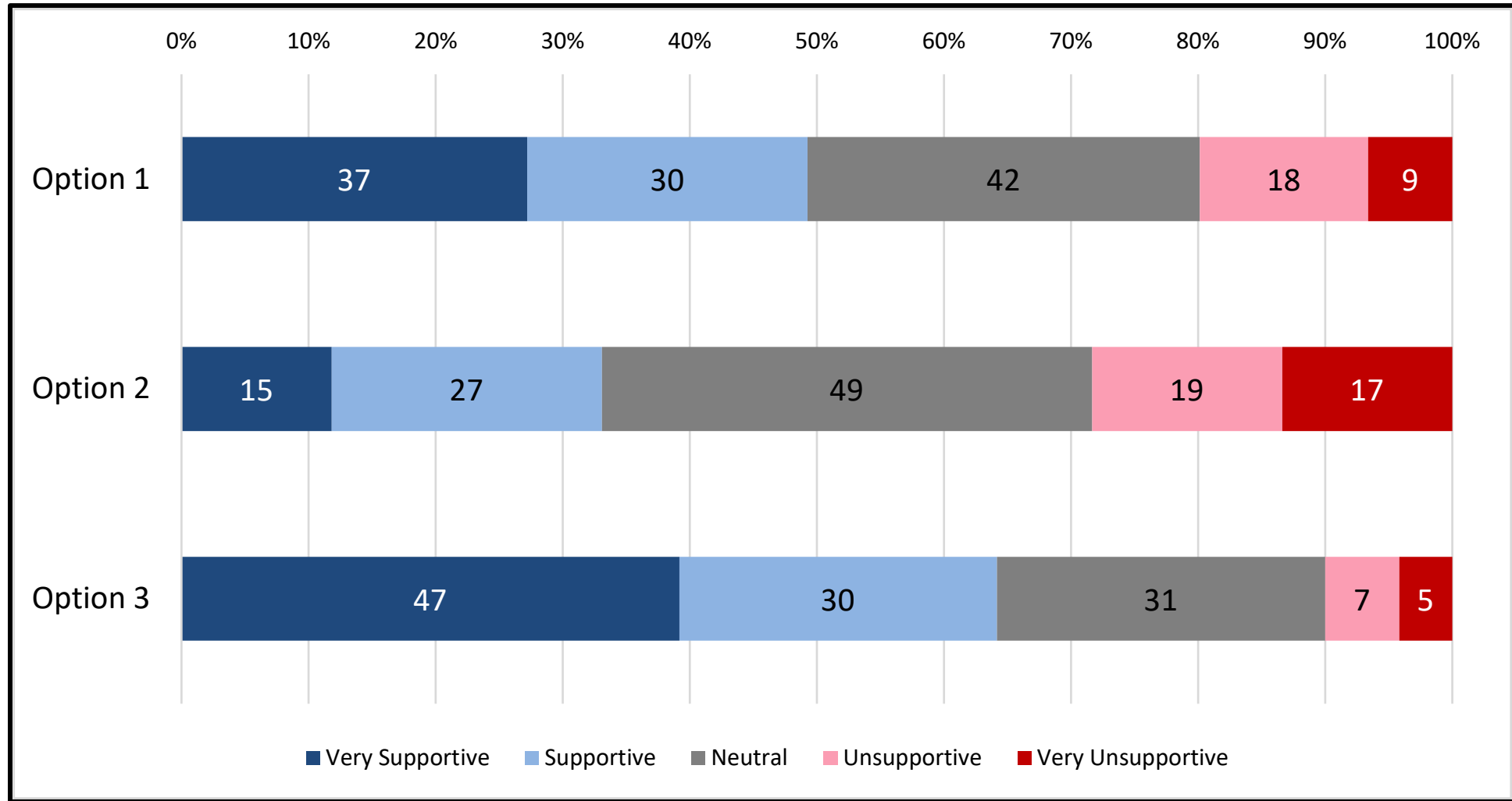
552 Students Moved

## Option 3





## ▶ BOUNDARY OPTIONS





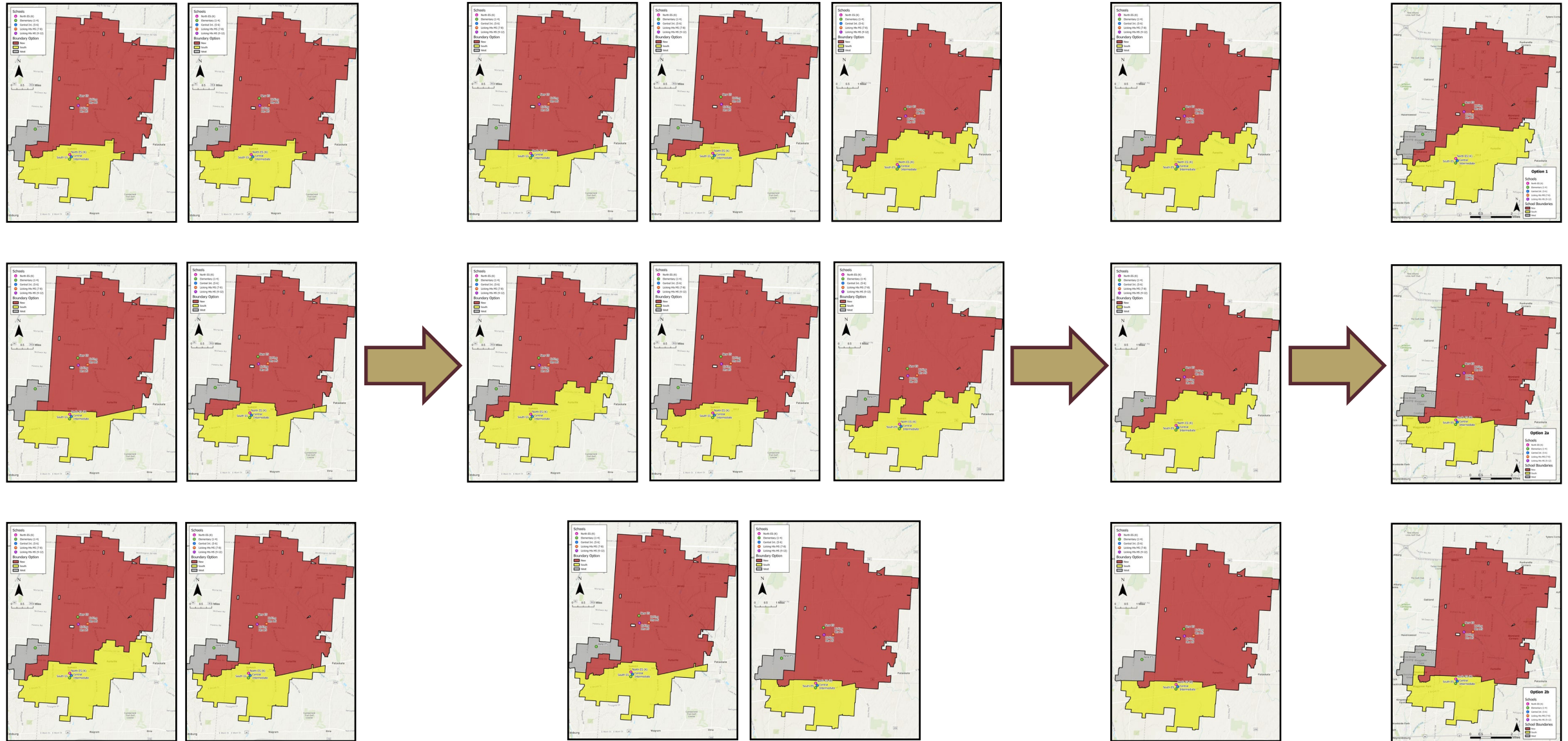


# RECOMMENDATION





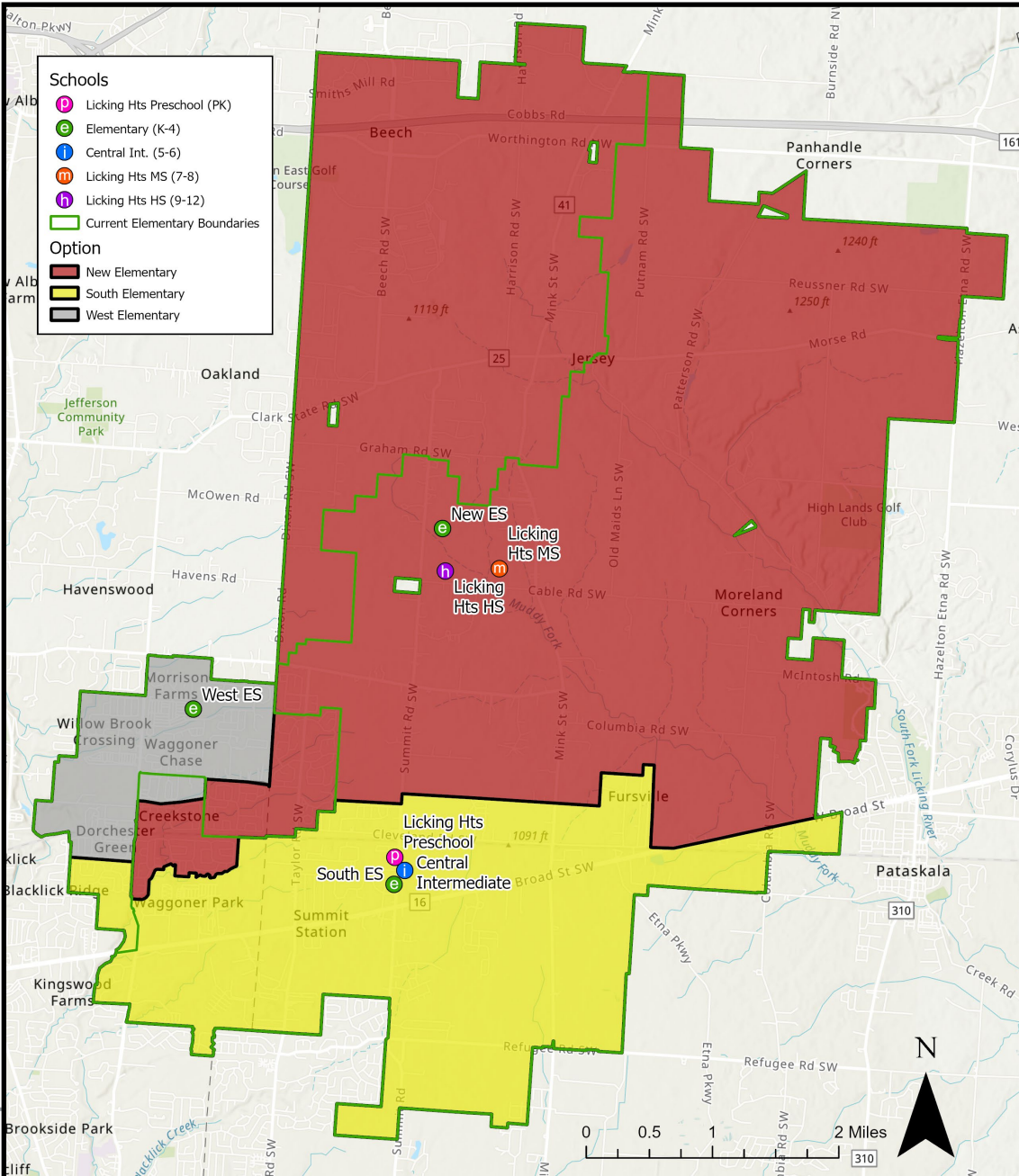
# ▶ ITERATIONS







# ▶ BOUNDARY RECOMMENDATION



OPTION				
School	Capacity	Live-In Enrollment	Utilization (using current students only)	Future Utilization (includes developments)
LH South (K-4)	800	530	66%	81%
LH West (K-4)	850	692	81%	83%
New K-4	900	729	81%	81%
<b>ES Subtotal</b>	<b>2,550</b>	<b>1,951</b>	<b>77%</b>	<b>82%</b>

K-3 Student Movement by Boundary	Option Boundaries		
	South	West	New
Current Boundaries	South	65	340
	West	91	248

Students Moved	
KG	187
1	185
2	188
3	184
<b>K-3 TOTAL</b>	<b>744</b>

## Overview:

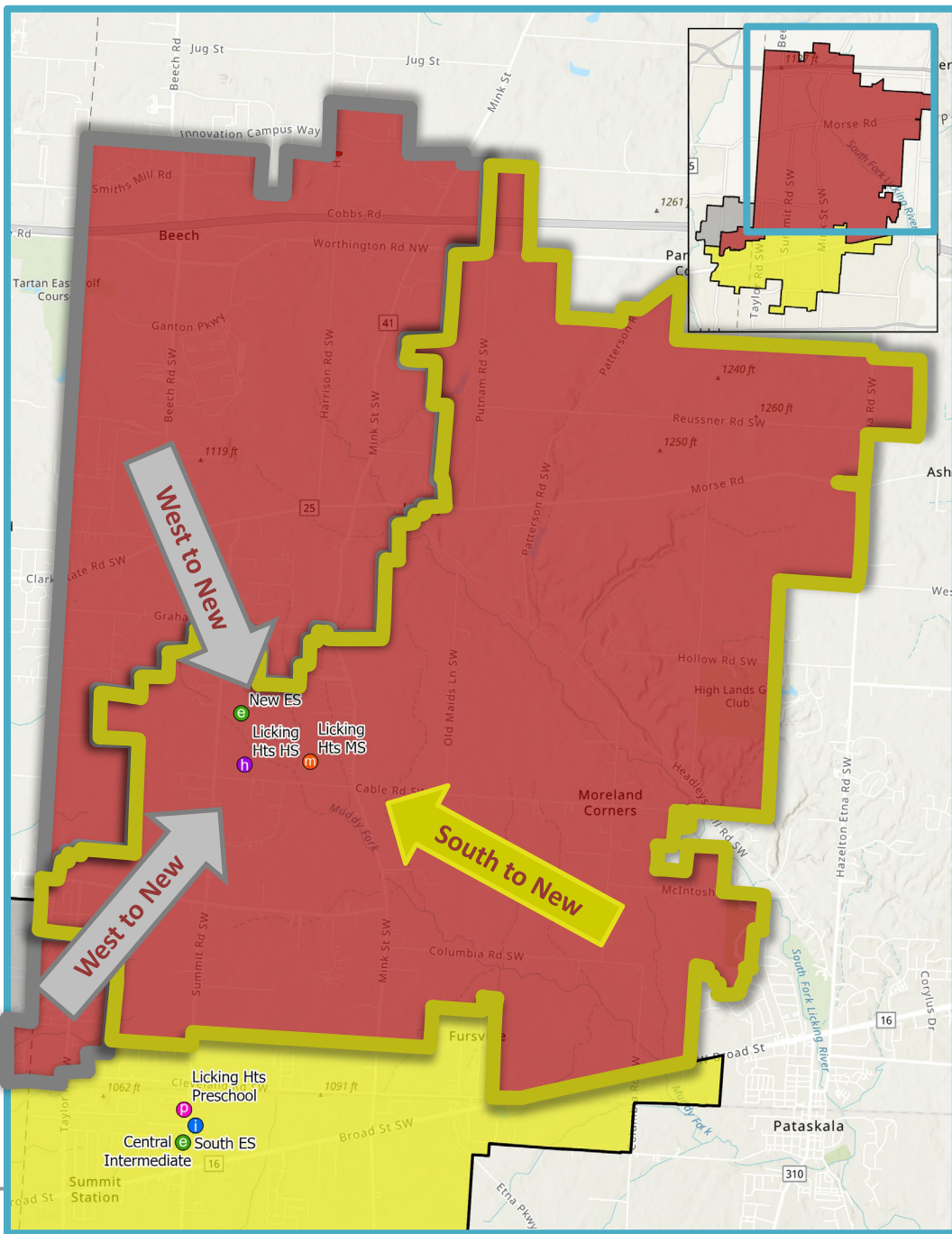
- Creates a boundary for the new elementary school, relieving high utilizations at South and West
- 62% of students attend closest school
- Moves 47% of elementary student population
- Keeps all neighborhoods together
- Balanced future utilizations



## ► BOUNDARY RECOMMENDATION

Top 4 Factors (Chosen >400x)	Recommendation	Option 1	Option 2	Option 3
Attempt to create boundaries that assign students to nearest school (629)	Assigns 62% of students to closest school	63%	58%	58%
Attempt to create boundaries that assign entire neighborhoods to the same school (445)	No neighborhood splits	No splits	1 neighborhood split	1 neighborhood split
Attempt to create boundaries that prepare the district to grow with minimal future boundary changes (410)	Future Utilizations: 81%-83%	Future Utilizations: 75%-88%	Future Utilizations: 76%-86%	Future Utilizations: 76%-86%
Attempt to create boundaries that balance enrollment among schools equitably (403)	<b>Current Utilization:</b> 66% - 81% <b>Future Utilization:</b> 81% - 83% <b>Low SES:</b> +- 4% of DW average <b>ELL %:</b> +- 2% of DW average	<b>Current Utilization:</b> 73% - 81% <b>Future Utilization:</b> 75% - 88% <b>Low SES:</b> +- 2% of DW average <b>ELL %:</b> +- 3% of DW average	<b>Current Utilization:</b> 70% - 84% <b>Future Utilization:</b> 76% - 86% <b>Low SES:</b> +- 5% of DW average <b>ELL %:</b> +- 4% of DW average	<b>Current Utilization:</b> 69% - 85% <b>Future Utilization:</b> 76% - 86% <b>Low SES:</b> +- 6% of DW average <b>ELL %:</b> +- 2% of DW average
Community Feedback	-	80.2% of respondents support or are neutral	71.6% of respondents support or are neutral	90.0% of respondents support or are neutral





## ▶ CHANGE AREAS

All addresses that front or are accessed directly from Cleveland Road SW/Adams Lane SW will remain at South Elementary (includes Fursville, Summit Ridge Estates, Summit Station, Glenbrooke, and Way Acres). All addresses north of this will attend the New Elementary.

### West ES to New ES

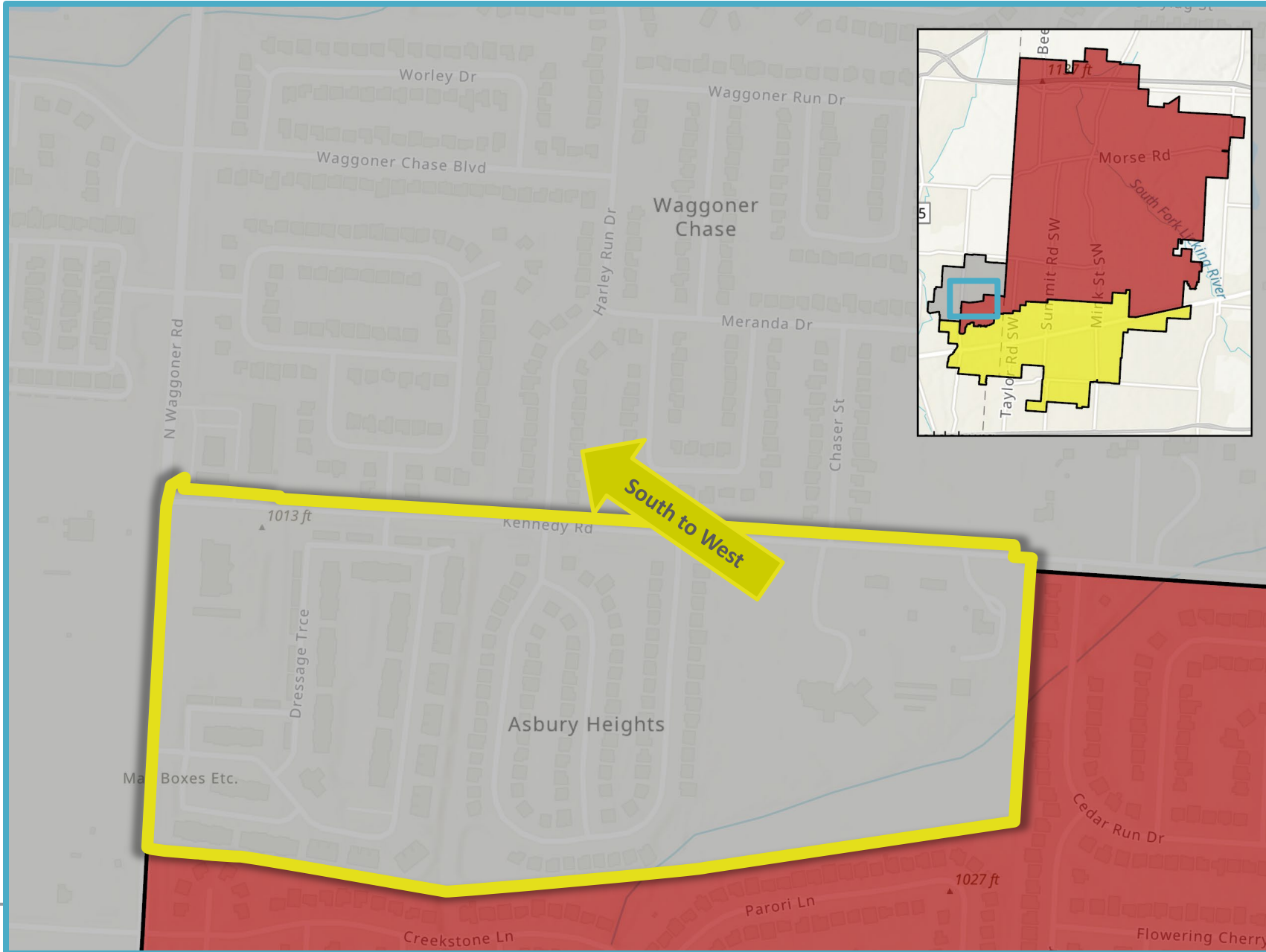
- Sims Gardens
- Bates Sims
- Morse View
- Gibney-Dysart Sub
- Walter Graham Sub
- Kylemore
- The Meadow Lands
- Cole Estates

### South ES to New ES

- Taylor Glen
- Bates Farms
- Erickson Farms
- Woodside Acres
- The Estates at Havens Corners
- Skyline Country Estates
- Meadow Acres
- Hinkle Estates
- Clearfield Estates
- Green Hollow Estates
- Meadowlark Acres
- Sycamore Lake Estates
- Settlement at Pataskala



## ▶ CHANGE AREAS



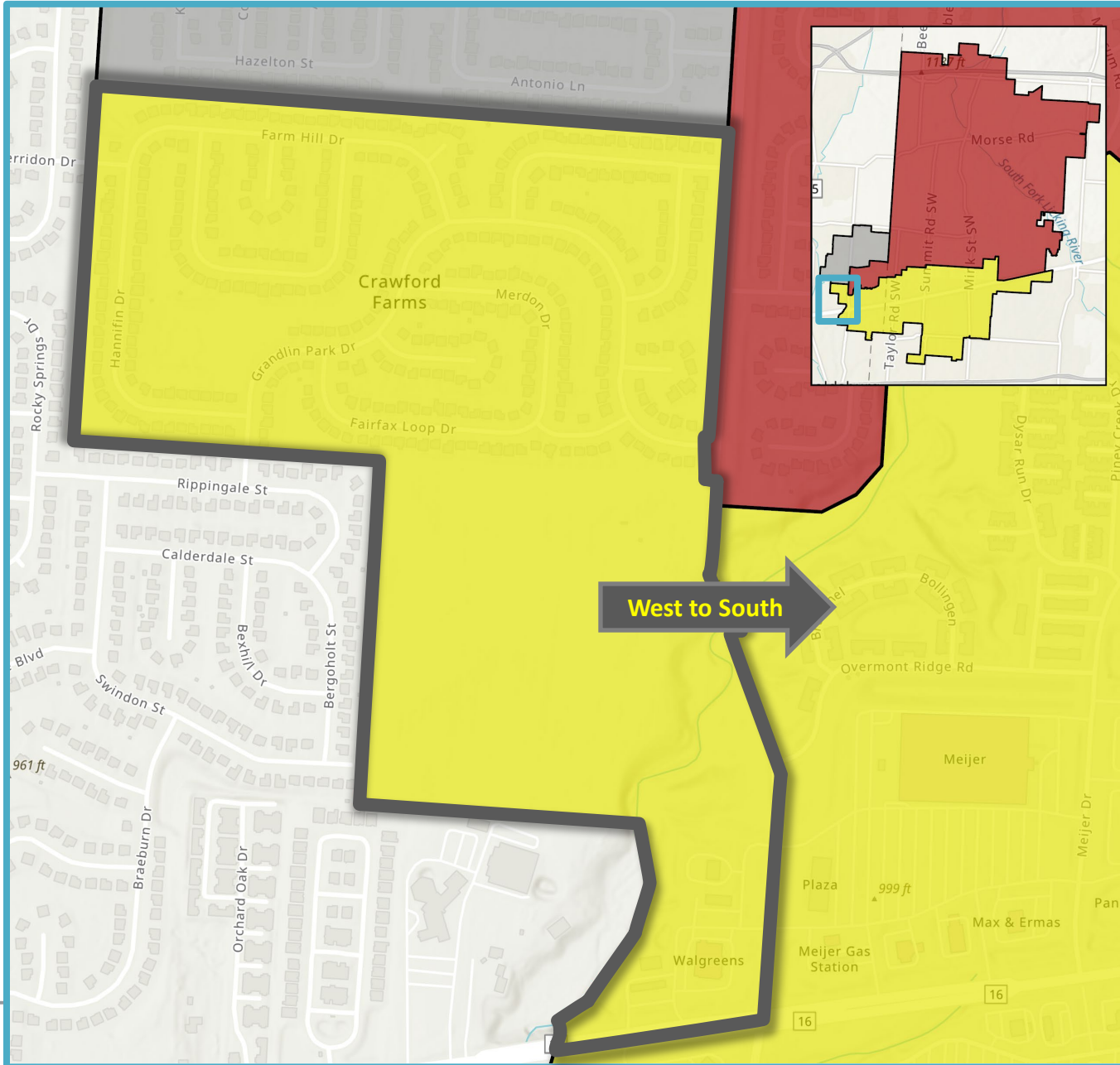
### South ES to West ES

- Jefferson Chase
- Asbury Heights





## ▶ CHANGE AREAS

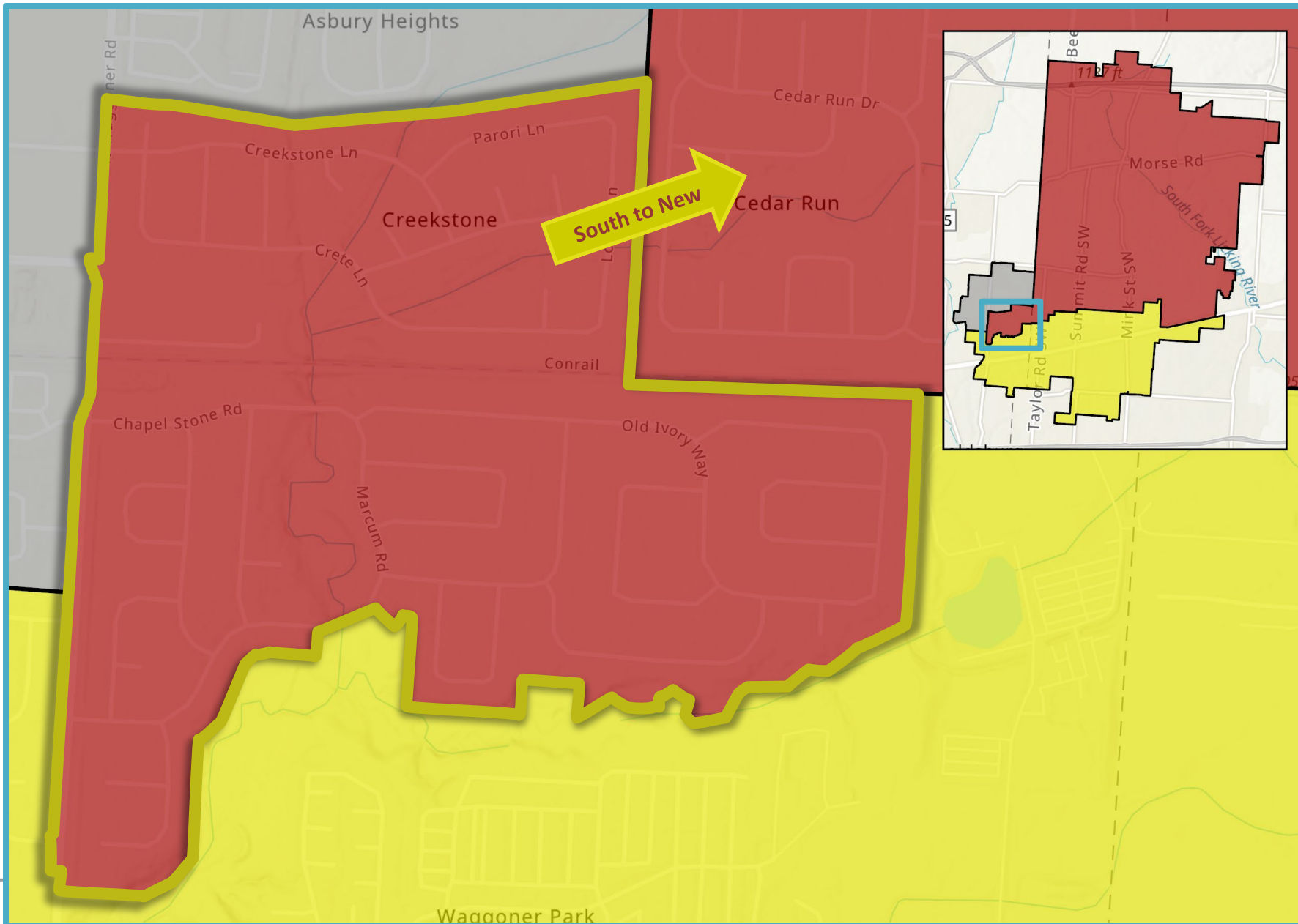


### West ES to South ES

- Crawford Farms



## ► CHANGE AREAS



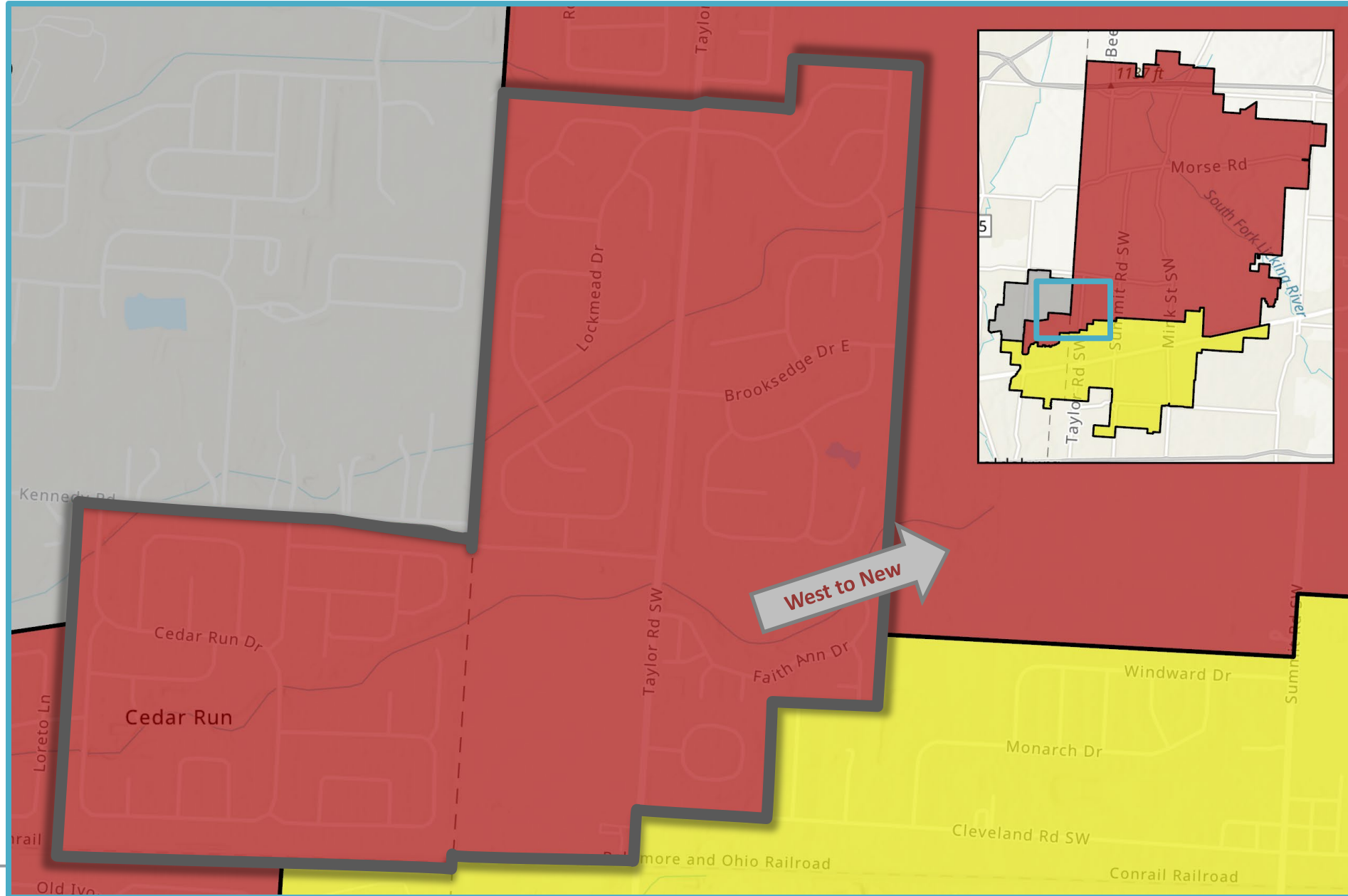
### South ES to New ES

- The Woods at Jefferson
- Creekstone





## ▶ CHANGE AREAS



### West ES to New ES

- Cedar Run
- Taylor Estates
- The Woods at Taylor Estates
- Brooksedge



**LICKING HEIGHTS**  
LOCAL SCHOOL DISTRICT

**Thank you!**



**W O O L P E R T**