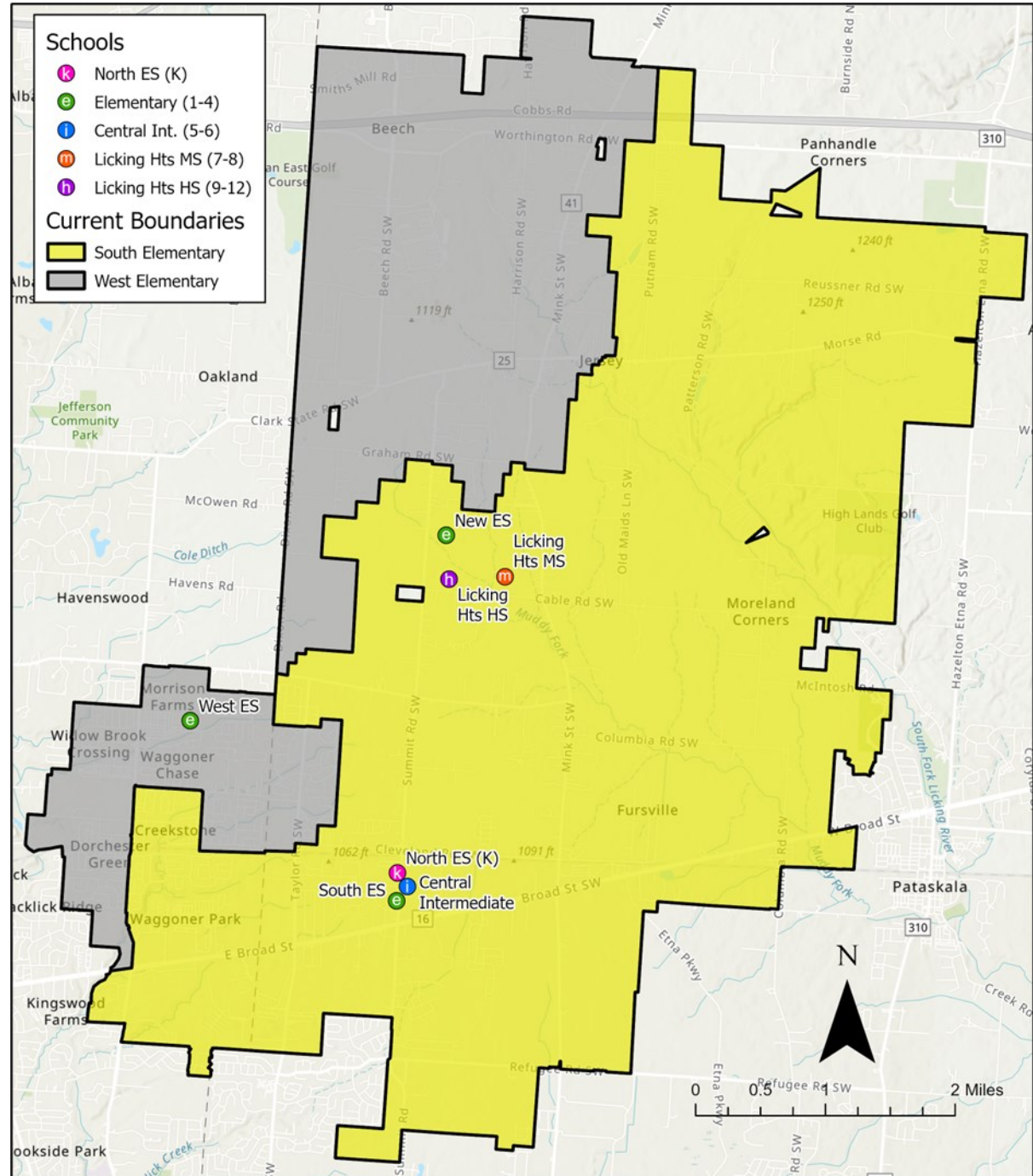


CURRENT			
School	Permanent Capacity	Live-In Enrollment	Utilization
LH North (KG)	480	364	76%
KG Subtotal	480	364	76%
LH South (1-4)	800	735	92%
LH West (1-4)	850	852	100%
ES Subtotal	1,650	1,587	96%
Central Int. (5-6)	764	830	109%
Int. Subtotal	764	830	109%
LH Middle (7-8)	900	785	87%
MS Subtotal	900	785	87%
LH High (9-12)	1,500	1,492	99%
HS Subtotal	1,500	1,492	99%

Scan this QR code to respond to the survey:



OPTION				
School	Capacity	Live-In Enrollment	Utilization (using current students only)	Future Utilization (includes developments)
LH South (K-4)	800	586	73%	88%
LH West (K-4)	850	690	81%	83%
New K-4	900	675	75%	75%
ES Subtotal	2,550	1,951	77%	82%

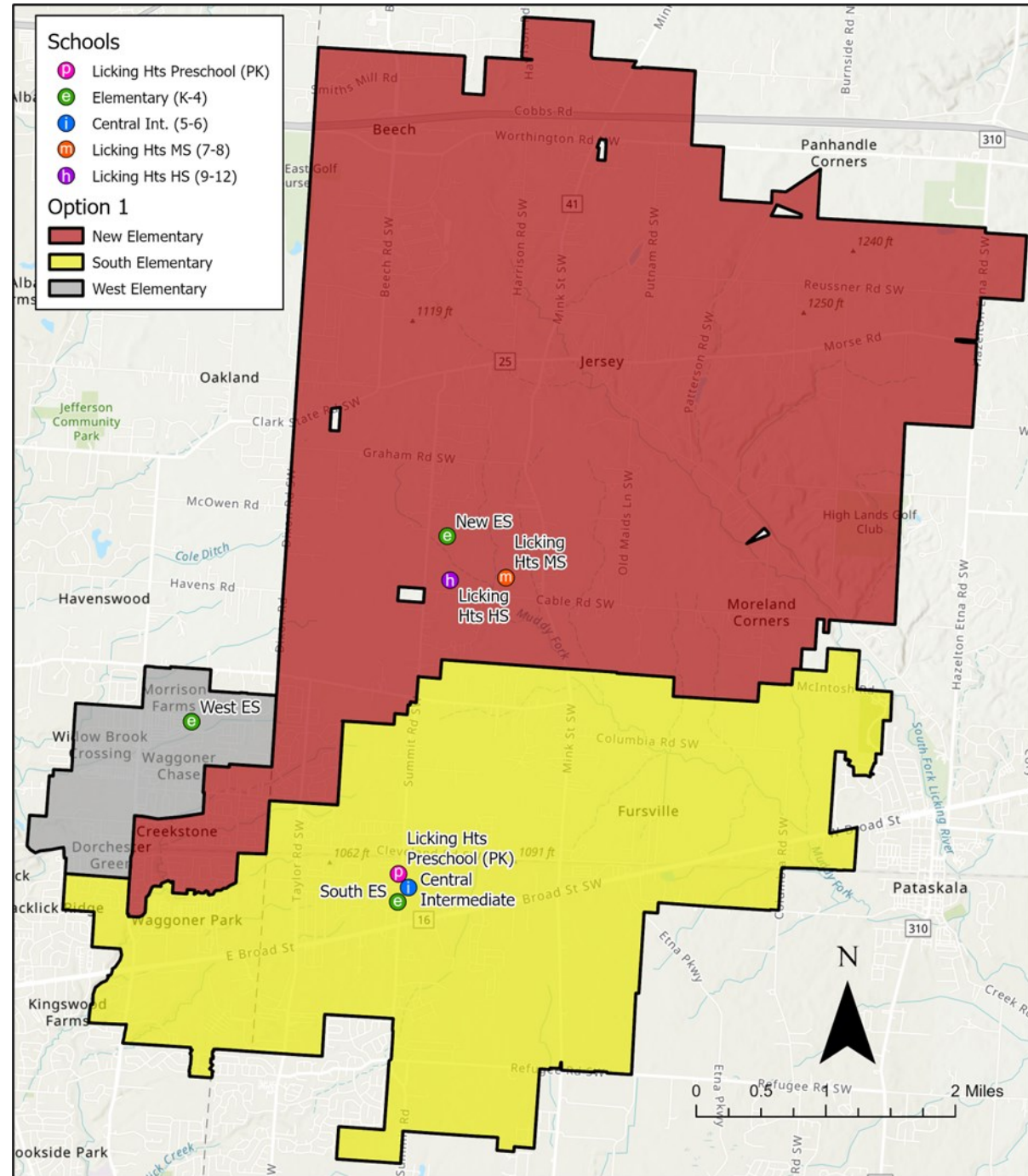
Students Moved	
KG	182
1	177
2	186
3	178
K-3 TOTAL	723

Benefits:

- The greatest number of students attend their geographically closest school (63%)
- Does not split neighborhoods

Challenges:

- The majority of the known current developments would go to South, causing a higher utilization than the other two schools in the future
- The New Elementary would be less utilized in the short term (to allow for future growth on the North side of the district)



OPTION				
School	Capacity	Live-In Enrollment	Utilization (using current students only)	Future Utilization (includes developments)
LH South (K-4)	800	556	70%	84%
LH West (K-4)	850	712	84%	86%
New K-4	900	683	76%	76%
ES Subtotal	2,550	1,951	77%	82%

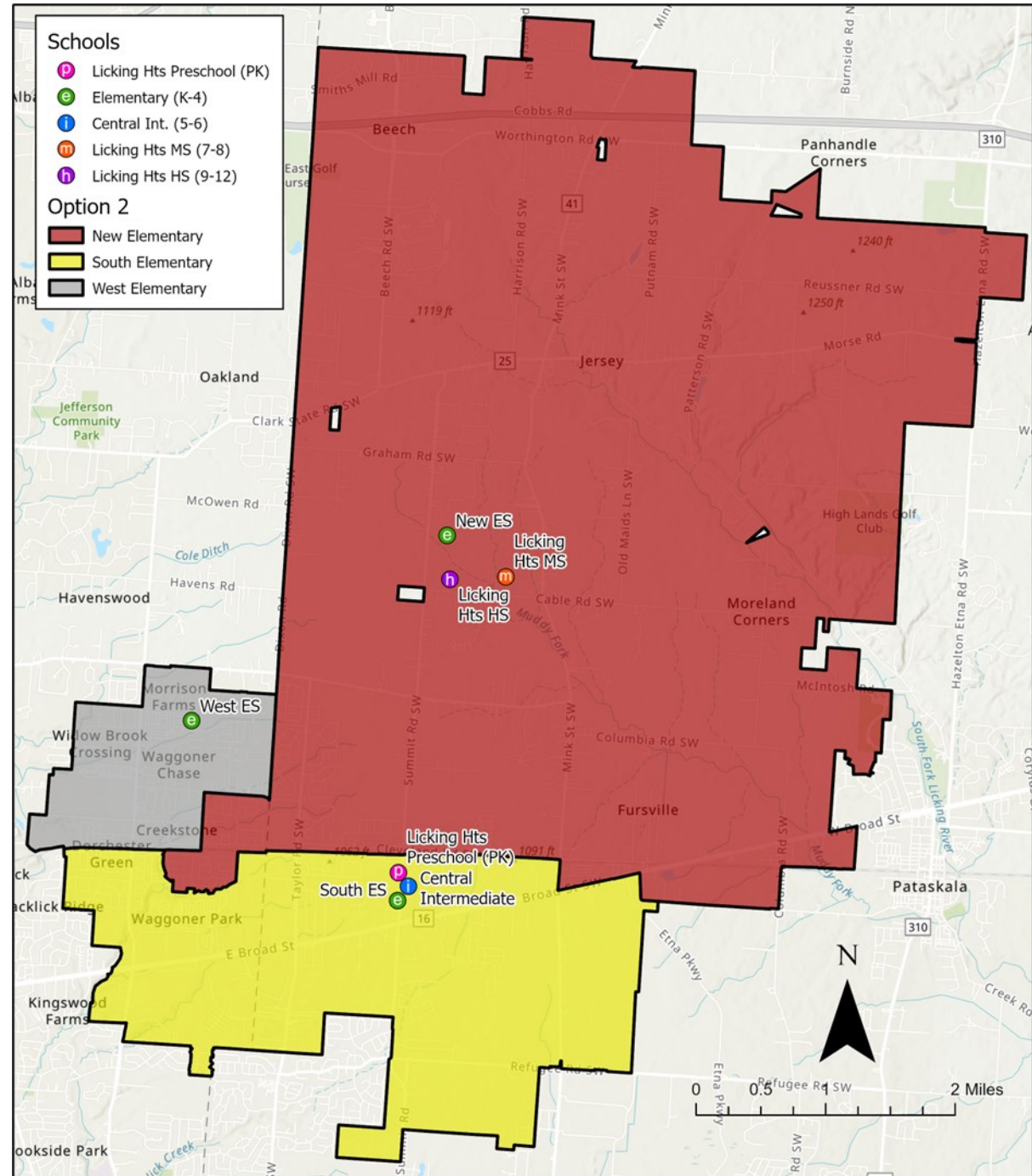
Students Moved	
KG	212
1	203
2	214
3	205
K-3 TOTAL	834

Benefits:

- Majority of boundary lines are along major roads/landmarks, making the boundaries easy to understand
- Allows additional room for growth at South Elementary to account for known current developments

Challenges:

- The New Elementary would be less utilized in the short term (to allow for future growth on the North side of the district)
- Moves the greatest number of students
- The Woods at Jefferson neighborhood remains split



OPTION				
School	Capacity	Live-In Enrollment	Utilization (using current students only)	Future Utilization (includes developments)
LH South (K-4)	800	549	69%	83%
LH West (K-4)	850	719	85%	86%
New K-4	900	683	76%	76%
ES Subtotal	2,550	1,951	77%	82%

Students Moved	
KG	146
1	135
2	139
3	132
K-3 TOTAL	552

- Benefits:**
- Allows additional room for growth at South Elementary to account for known current developments
 - Moves the fewest number of students; all students moved are moving into the new school

- Challenges:**
- The New Elementary would be less utilized in the short term (to allow for future growth on the North side of the district)
 - The Woods at Jefferson neighborhood remains split

