



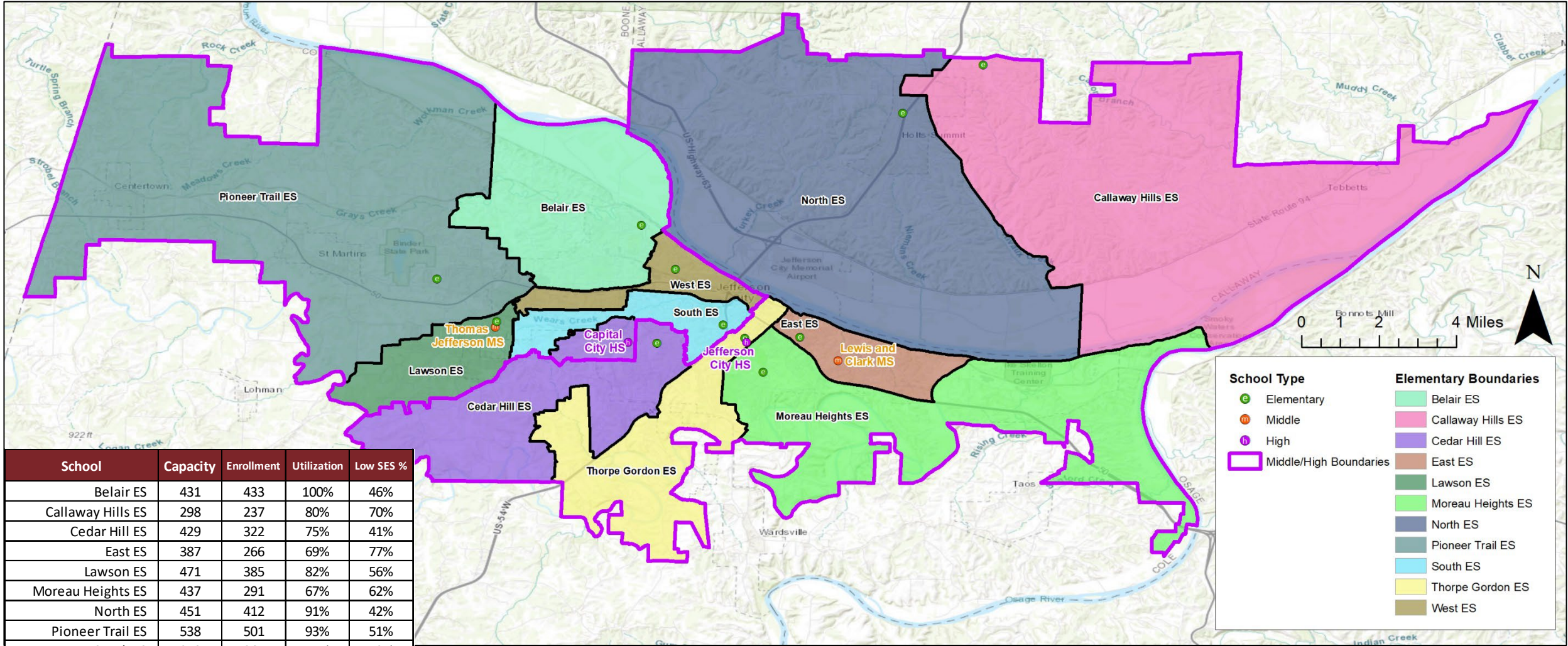
COOPERATIVE STRATEGIES

COMPLETE FINANCIAL & DEMOGRAPHIC PLANNING FOR EDUCATION

**JEFFERSON CITY SCHOOLS
BOUNDARY ADVISORY COMMITTEE
MEETING**

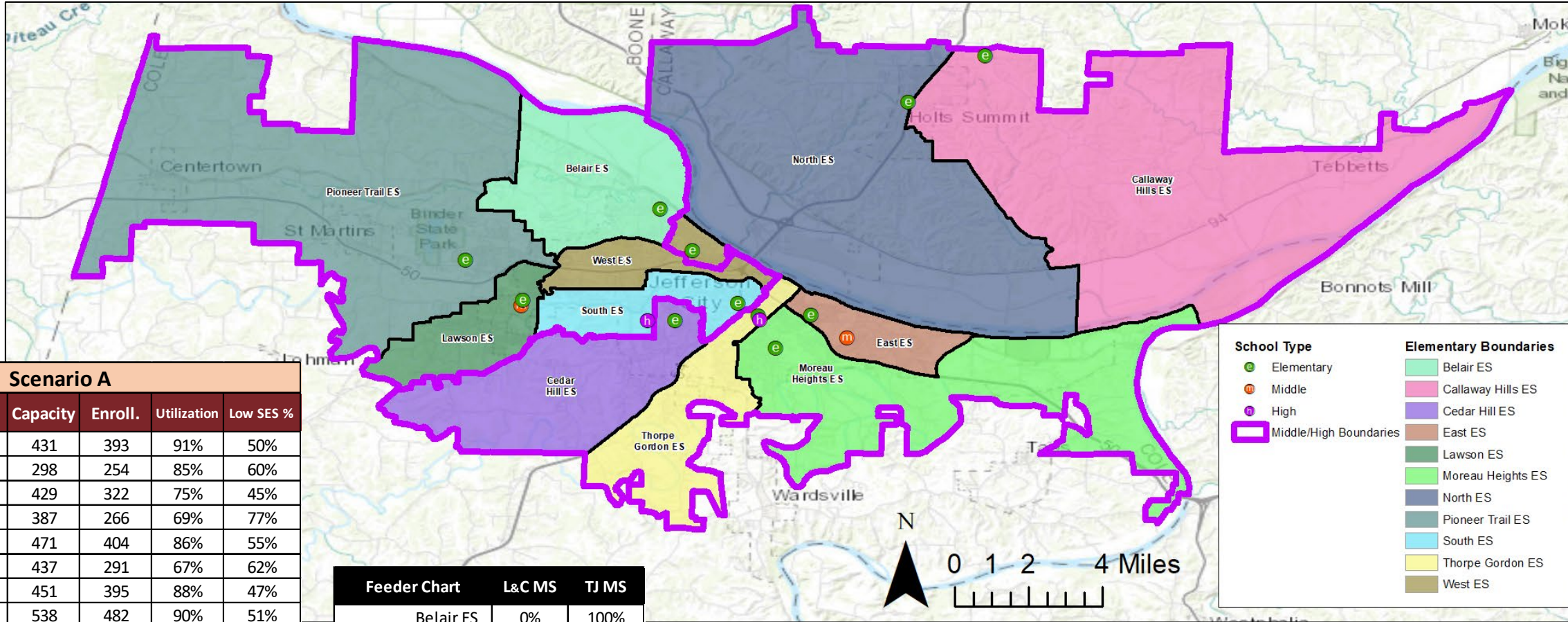
JANUARY 4, 2022

21-22 ATTENDANCE AREAS



School	Capacity	Enrollment	Utilization	Low SES %
Belair ES	431	433	100%	46%
Callaway Hills ES	298	237	80%	70%
Cedar Hill ES	429	322	75%	41%
East ES	387	266	69%	77%
Lawson ES	471	385	82%	56%
Moreau Heights ES	437	291	67%	62%
North ES	451	412	91%	42%
Pioneer Trail ES	538	501	93%	51%
South ES	340	261	77%	73%
Thorpe Gordon ES	340	300	88%	78%
West ES	409	296	72%	61%
ELEMENTARY SUBTOTAL	4,531	3,704	82%	58%
Thomas Jefferson MS	972	1,050	108%	52%
Lewis and Clark MS	972	867	89%	59%
MIDDLE SUBTOTAL	1,944	1,917	99%	56%
Capital City HS	1,600	1,456	91%	44%
Jefferson City HS	1,800	1,228	68%	46%
HIGH SUBTOTAL	3,400	2,684	79%	45%

► SCENARIO A



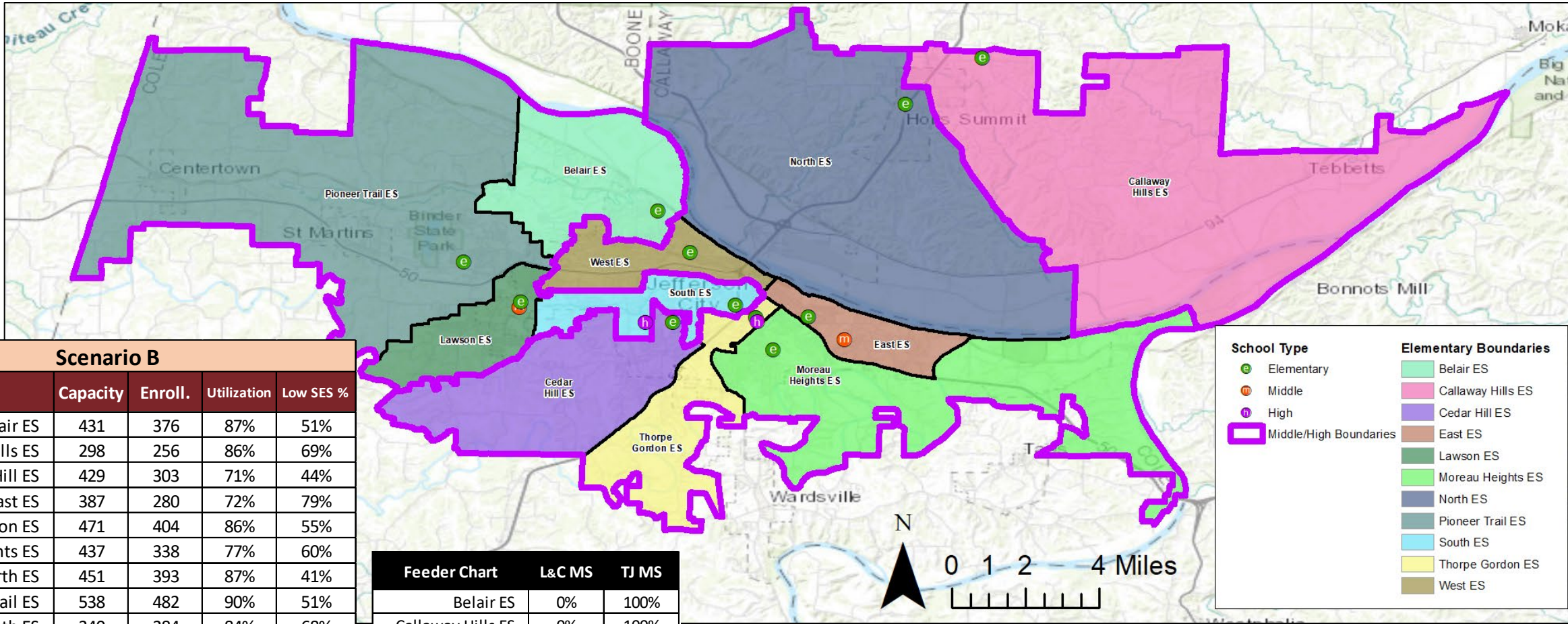
Scenario A

School	Capacity	Enroll.	Utilization	Low SES %
Belair ES	431	393	91%	50%
Callaway Hills ES	298	254	85%	60%
Cedar Hill ES	429	322	75%	45%
East ES	387	266	69%	77%
Lawson ES	471	404	86%	55%
Moreau Heights ES	437	291	67%	62%
North ES	451	395	88%	47%
Pioneer Trail ES	538	482	90%	51%
South ES	340	292	86%	69%
Thorpe Gordon ES	340	269	79%	79%
West ES	409	336	82%	55%
ELEMENTARY SUBTOTAL	4,531	3,704	82%	58%
Thomas Jefferson MS	972	944	97%	53%
Lewis and Clark MS	972	973	100%	58%
MIDDLE SUBTOTAL	1,944	1,917	99%	56%
Capital City HS	1,600	1,300	81%	43%
Jefferson City HS	1,800	1,384	77%	46%
HIGH SUBTOTAL	3,400	2,684	79%	45%

Feeder Chart	L&C MS	TJ MS
Belair ES	0%	100%
Callaway Hills ES	100%	0%
Cedar Hill ES	100%	0%
East ES	100%	0%
Lawson ES	0%	100%
Moreau Heights ES	100%	0%
North ES	100%	0%
Pioneer Trail ES	0%	100%
South ES	0%	100%
Thorpe Gordon ES	100%	0%
West ES	43%	57%

Students Moved	Total
Elementary	274
Middle	106
High	156

► SCENARIO B

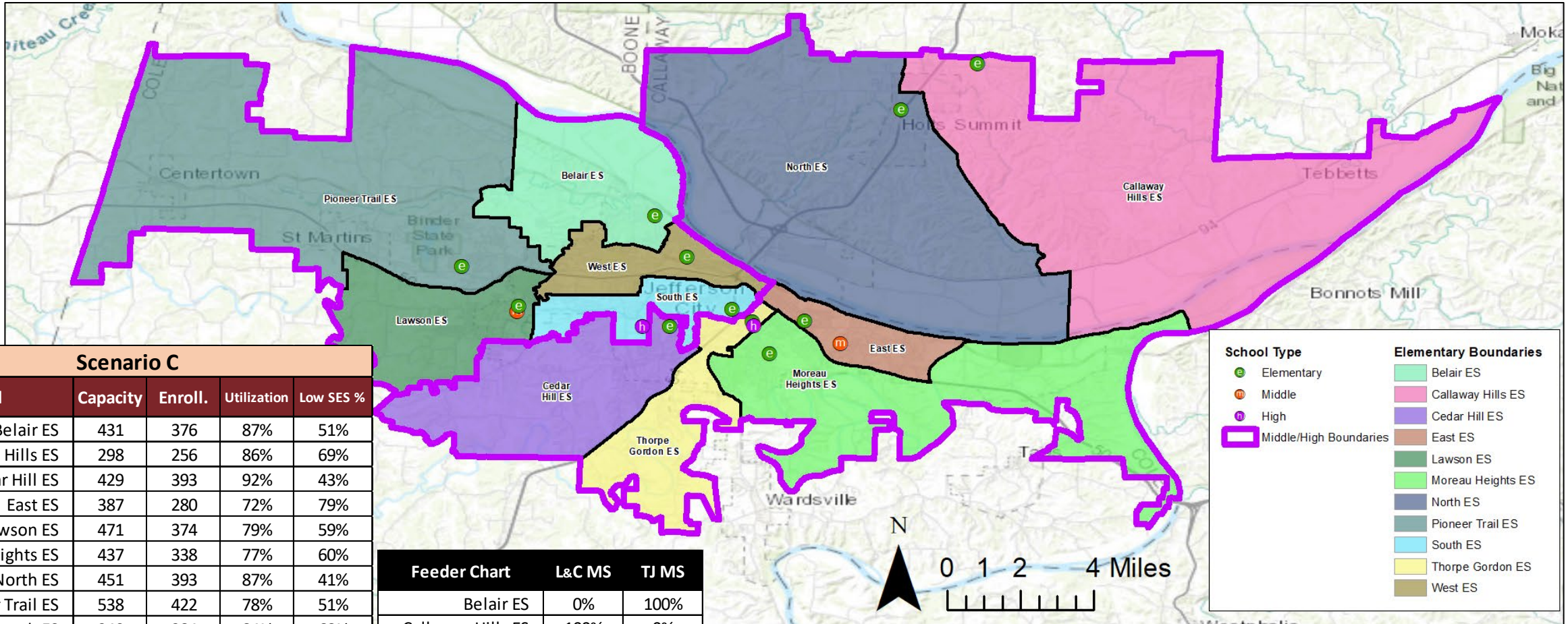


Scenario B				
School	Capacity	Enroll.	Utilization	Low SES %
Belair ES	431	376	87%	51%
Callaway Hills ES	298	256	86%	69%
Cedar Hill ES	429	303	71%	44%
East ES	387	280	72%	79%
Lawson ES	471	404	86%	55%
Moreau Heights ES	437	338	77%	60%
North ES	451	393	87%	41%
Pioneer Trail ES	538	482	90%	51%
South ES	340	284	84%	68%
Thorpe Gordon ES	340	235	69%	80%
West ES	409	353	86%	54%
ELEMENTARY SUBTOTAL	4,531	3,704	82%	58%
Thomas Jefferson MS	972	978	101%	55%
Lewis and Clark MS	972	939	97%	56%
MIDDLE SUBTOTAL	1,944	1,917	99%	56%
Capital City HS	1,600	1,309	82%	43%
Jefferson City HS	1,800	1,375	76%	46%
HIGH SUBTOTAL	3,400	2,684	79%	45%

Feeder Chart	L&C MS	TJ MS
Belair ES	0%	100%
Callaway Hills ES	0%	100%
Cedar Hill ES	100%	0%
East ES	100%	0%
Lawson ES	0%	100%
Moreau Heights ES	100%	0%
North ES	100%	0%
Pioneer Trail ES	0%	100%
South ES	0%	100%
Thorpe Gordon ES	100%	0%
West ES	100%	0%

Students Moved	Total
Elementary	264
Middle	354
High	479

► SCENARIO C



Scenario C

School	Capacity	Enroll.	Utilization	Low SES %
Belair ES	431	376	87%	51%
Callaway Hills ES	298	256	86%	69%
Cedar Hill ES	429	393	92%	43%
East ES	387	280	72%	79%
Lawson ES	471	374	79%	59%
Moreau Heights ES	437	338	77%	60%
North ES	451	393	87%	41%
Pioneer Trail ES	538	422	78%	51%
South ES	340	284	84%	68%
Thorpe Gordon ES	340	235	69%	80%
West ES	409	353	86%	54%
ELEMENTARY SUBTOTAL	4,531	3,704	82%	58%
Thomas Jefferson MS	972	995	102%	54%
Lewis and Clark MS	972	922	95%	58%
MIDDLE SUBTOTAL	1,944	1,917	99%	56%
Capital City HS	1,600	1,370	86%	44%
Jefferson City HS	1,800	1,314	73%	46%
HIGH SUBTOTAL	3,400	2,684	79%	45%

Feeder Chart

	L&C MS	TJ MS
Belair ES	0%	100%
Callaway Hills ES	100%	0%
Cedar Hill ES	100%	0%
East ES	100%	0%
Lawson ES	0%	100%
Moreau Heights ES	100%	0%
North ES	100%	0%
Pioneer Trail ES	0%	100%
South ES	0%	100%
Thorpe Gordon ES	100%	0%
West ES	0%	100%

Students Moved

	Total
Elementary	414
Middle	93
High	124

► COMMENT SENTIMENT

Overall	A	B	C
Positive	184	146	224
Neutral	33	39	32
Negative	203	236	180

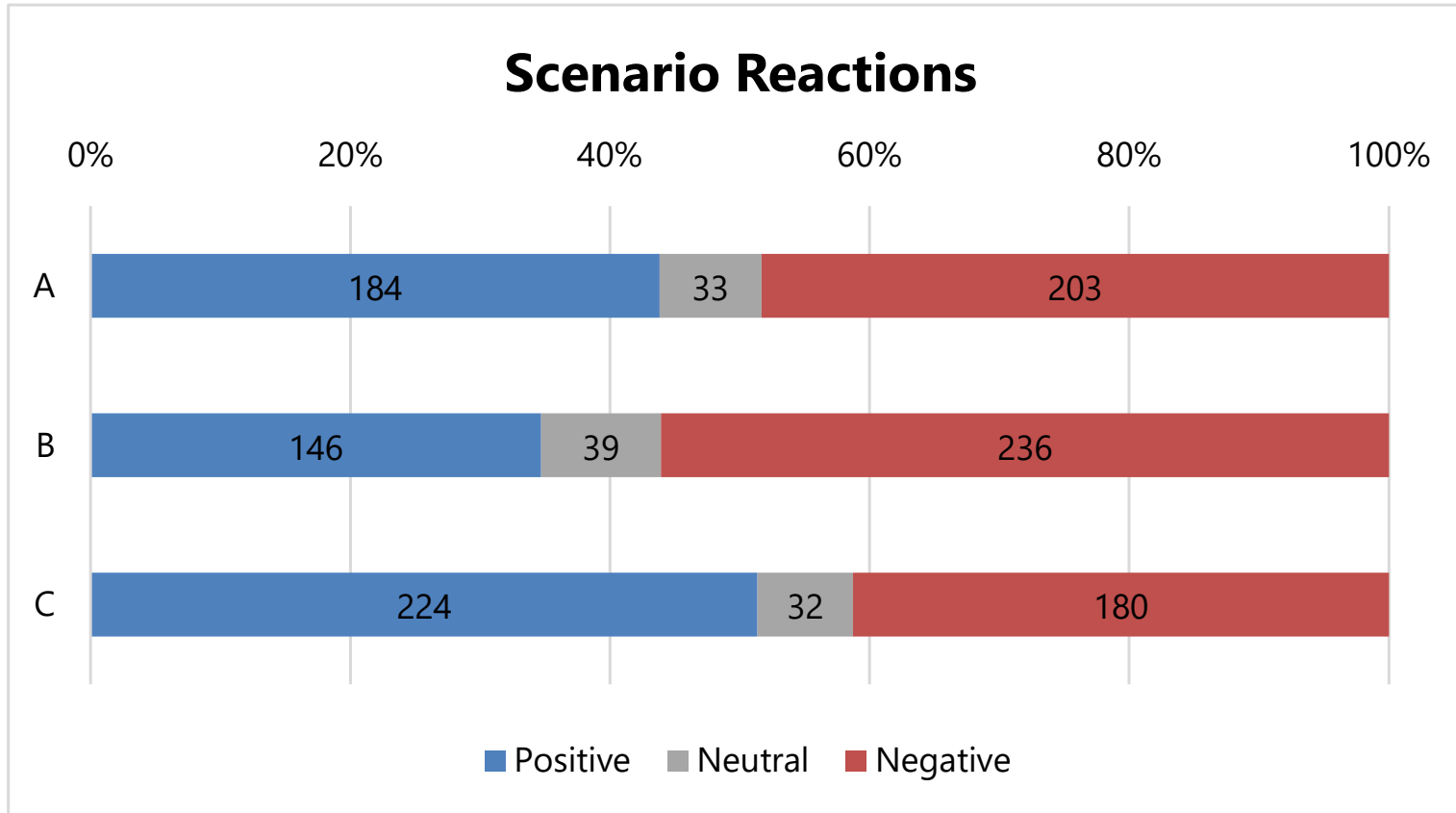
Staff	A	B	C
Positive	29	21	24
Neutral	3	3	4
Negative	25	37	28

ES Parents	A	B	C
Positive	118	96	116
Neutral	16	23	19
Negative	113	116	110

MS Parents	A	B	C
Positive	71	50	68
Neutral	13	15	14
Negative	52	81	60

HS Parents	A	B	C
Positive	50	29	68
Neutral	9	11	10
Negative	62	90	44

Students	A	B	C
Positive	2	4	10
Neutral	2	1	2
Negative	10	13	2



► COMMENT SENTIMENT

Belair Elementary	A	B	C
Positive	24	9	24
Neutral	4	4	5
Negative	19	34	16

Lawson Elementary	A	B	C
Positive	70	57	6
Neutral	4	6	1
Negative	8	19	77

South Elementary	A	B	C
Positive	4	3	4
Neutral	1	1	2
Negative	3	5	2

Callaway Hills Elementary	A	B	C
Positive	8	5	8
Neutral	4	2	5
Negative	8	12	5

Moreau Heights Elementary	A	B	C
Positive	7	1	5
Neutral	0	3	0
Negative	1	5	3

Thorpe Gordon Elementary	A	B	C
Positive	3	0	2
Neutral	1	0	0
Negative	0	4	2

Cedar Hill Elementary	A	B	C
Positive	5	7	5
Neutral	3	3	5
Negative	14	12	13

North Elementary	A	B	C
Positive	6	21	28
Neutral	2	1	2
Negative	35	17	7

West Elementary	A	B	C
Positive	9	6	72
Neutral	3	7	5
Negative	66	60	7

East Elementary	A	B	C
Positive	1	1	0
Neutral	1	0	1
Negative	1	3	1

Pioneer Trail Elementary	A	B	C
Positive	15	8	14
Neutral	4	6	3
Negative	10	14	14

Southwest Early Childhood Center	A	B	C
Positive	3	1	3
Neutral	0	0	1
Negative	2	4	1

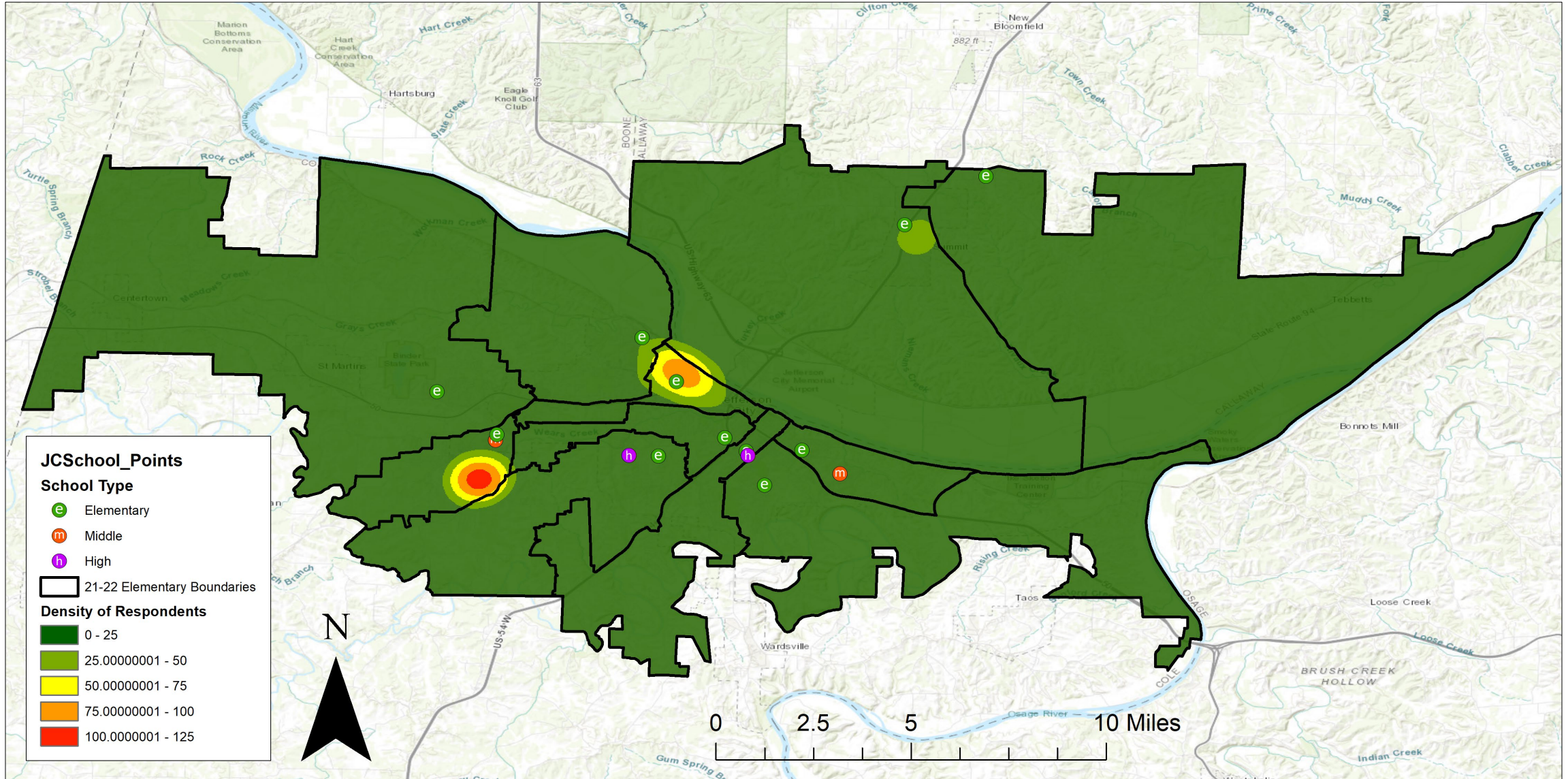
Thomas Jefferson Middle	A	B	C
Positive	84	60	90
Neutral	14	19	11
Negative	79	101	88

Lewis & Clark Middle	A	B	C
Positive	17	12	27
Neutral	4	5	5
Negative	23	32	11

Capital City High	A	B	C
Positive	69	50	87
Neutral	13	14	9
Negative	73	97	67

Jefferson City High	A	B	C
Positive	9	9	29
Neutral	4	1	5
Negative	32	43	13

► RESPONDENTS BY STREET



► RESPONSE SUMMARY

Overall Summary

- Many people are unhappy with any changes, regardless of who is impacted- would prefer to keep things the same
- Grandfathering is highly desirable
- Some mention of 5th and/or 6th grade buildings to alleviate over-utilizations
- Cedar Hill area families (especially those living close to Cedar Hill ES) would like to attend TJ & CCHS (proximity reasons)
- Class size concerns (student to teacher ratio, not necessarily utilization)
- Transfer policy may need to be addressed
- Proximity is highly valued

REMINDER!!!

- This is not about one school or neighborhood. This is about the District as a whole. Some areas just make sense to move based on geography and where growth is occurring. Sometimes what is best for the District is not what is best for an individual neighborhood.
- Guidelines are meant to be a framework, and we won't be able to follow them everywhere in every scenario.
- Being a 2 high school town is hard

- “I truly appreciate the volunteers who are part of this committee. I know it has been stressful for them as it has for us parents but they are putting in a lot of time and probably not getting recognized for that. I just want to say thank you to them.”

► RESPONSE SUMMARIES

Scenario A

- Feeder split at West is a concern/unpopular
- Changes to North & Callaway Hills are unpopular
 - Majority of negative comments were regarding West feeder split & change to Callaway County elementary schools
- The changes between North & Callaway Hills create further distances travelled for students
- Like that Callaway County stays together for MS/HS
- Many said that this scenario was the least disruptive
- Concern that some buildings may still be crowded
- Cedar Hill to South is unpopular move

Scenario B

- Proximity/transportation concerns
- Splitting North & Callaway Hills for MS & HS is not desirable for Callaway County portion of District
- Concerns over the number of students impacted
- Balanced utilizations & longevity of plan are good

Scenario C

- Positive feedback from West families, negative feedback from Covington Gardens families
 - Covington Gardens would prefer to stay at Lawson/TJ/CCHS for proximity reasons
 - Only adding students to West ES
- Like that Callaway County stays together for MS/HS
- Community members appreciate the lack of feeder splits
- West side schools can grow
- Many said that this scenario was the least disruptive

► MATRIX ACTIVITY

Board Guidelines									Additional Metrics			
Scenario:	Minimize disruption	Keep siblings together	Balanced Enrollment	Balanced SES	Transportation	Keep Neighborhoods together	Feeder Splits?	Follow natural boundaries	# of schools impacted	# of students impacted	Utilization Ranges	Socioeconomic Ranges
Scenario A									13	536	ES: 67% - 91% MS: 97% - 100% HS: 77% - 81%	ES: 45% - 79% MS: 53% - 58% HS: 43% - 46%
Scenario B									15 (all)	1,079	ES: 69% - 90% MS: 97% - 101% HS: 76% - 82%	ES: 41% - 80% MS: 55% - 56% HS: 43% - 46%
Scenario C									15 (all)	631	ES: 69% - 92% MS: 95% - 102% HS: 73% - 86%	ES: 41% - 80% MS: 54% - 58% HS: 44% - 46%