

## CPS Attendance Area Changes - Phases 2 & 3 Final Options

Columbia Public Schools | June 2024



# Attendance Area Planning Process

**Plan for  
Planning**

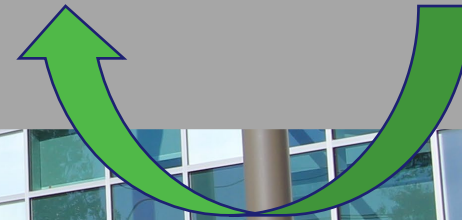
**Background  
Data**

**Committee**

**Boundary  
Work-Sessions**

**Community  
Engagement**

**Recommendation**



# Boundary Phases & Remaining Process Timeline

## Phases 1 & 2: 2025-26

Fill new Russell Boulevard Elementary addition  
(Board has approved Phase 1 changes for RBES)

Fill new Battle Elementary addition  
Balance middle & high school enrollments  
Balance elementary enrollments that will not be  
impacted by new Southwest Elementary

## Phase 3: 2026-27

Fill new Southwest Elementary School  
Balance enrollments at remaining schools impacted  
by Southwest Elementary

- **June 5:** Final Options Introduced to Long-Range Planning Committee
  - Feedback Survey Opens
- **June 10:** Final Options Overview with Board
  - **June 11:** Attendance Area Open Houses
  - **June 14:** Feedback Survey Closes
- **July 8:** Board vote on phases 2 & 3

# Board of Education Attendance Area Change Guidelines

- Attendance areas do change and will continue to change. This work is part of a regular review of district enrollment patterns.
- The attendance area should anticipate future growth of neighborhoods. A walkable and bikeable school is important, but may not always be possible.
- The attendance area seeks to reflect the composition of the Columbia Public Schools community.
- The board recognizes the power of a school to create a community. Accessibility for families is important (volunteering and attending school functions are easier when the school is near).
- Consider the time students spend on a bus and the distance traveled to and from school.
- Consider attendance areas boundary lines that follow natural/man-made boundaries.
- Consider a transfer policy that allows incoming 5<sup>th</sup>, 8<sup>th</sup>, and 12<sup>th</sup> graders to remain at their previous school and policies that allow siblings to remain.

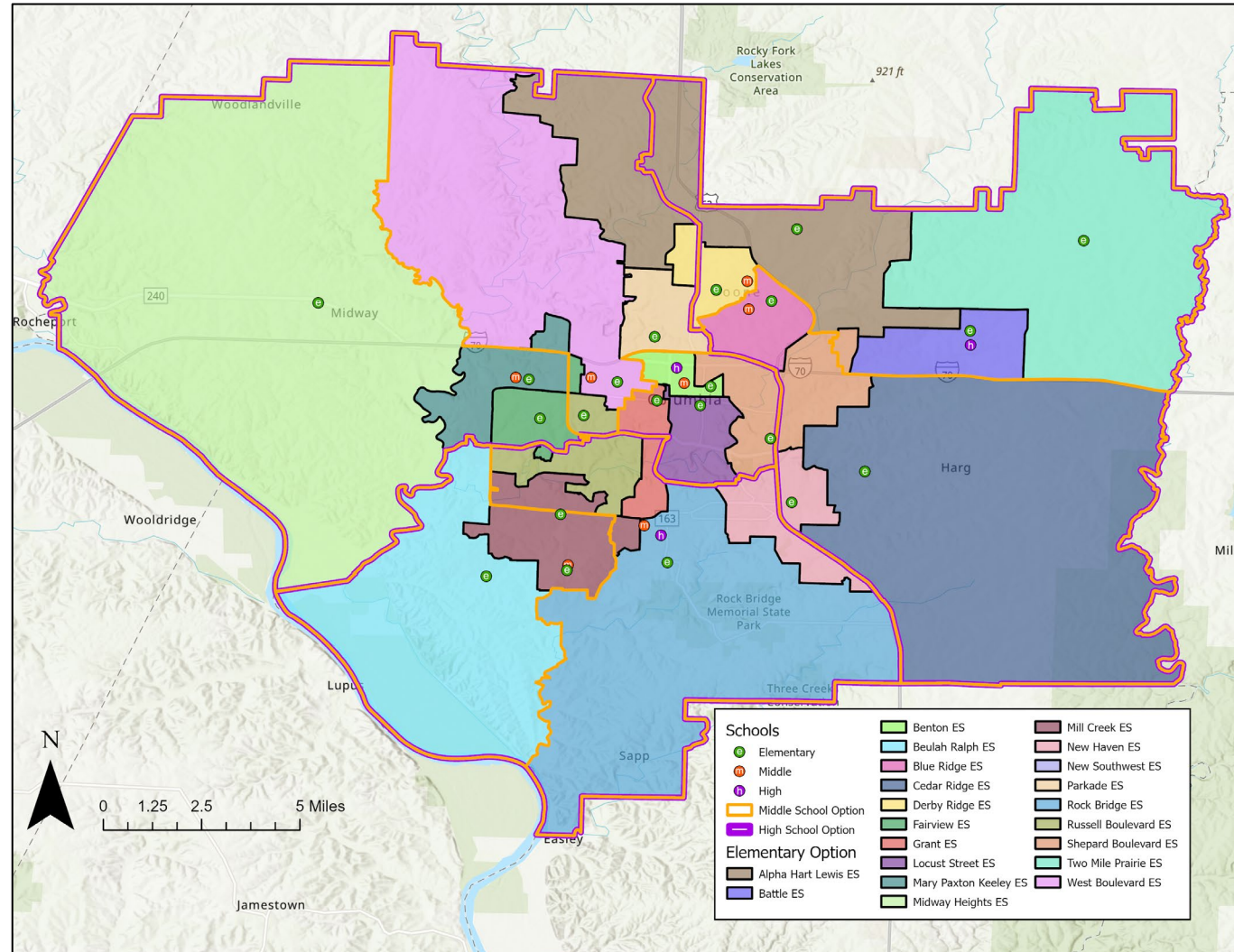




# BACKGROUND DATA

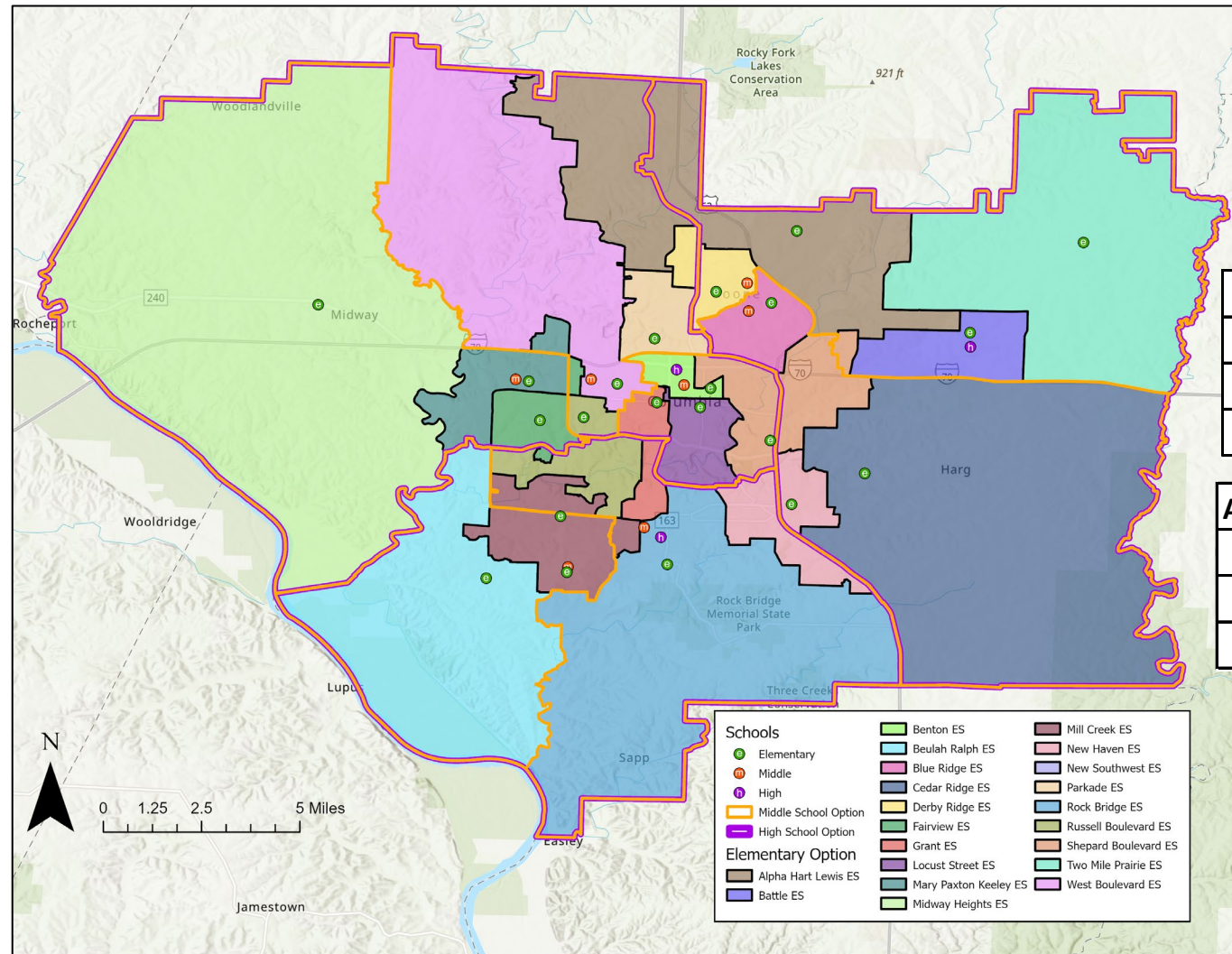


# Current State



Attendance Area	23-24 Capacity	K-12 Live-In Enrollment	Live-In Utilization	Diversity Index	Low SES %	EL %	IEP %	2028-29 Utilization	Attend Utilization
Alpha Hart Lewis ES	650	522	80%	2.31	52%	14%	12%	74%	73%
Battle ES	450	377	84%	2.59	67%	9%	15%	88%	81%
Benton ES	260	157	60%	2.76	73%	13%	17%	67%	87%
Beulah Ralph ES	650	669	103%	1.20	16%	6%	9%	88%	102%
Blue Ridge ES	500	493	99%	2.96	72%	20%	12%	110%	97%
Cedar Ridge ES	650	487	75%	1.83	41%	4%	8%	80%	71%
Derby Ridge ES	556	395	71%	2.62	58%	14%	17%	79%	65%
Fairview ES	550	471	86%	1.39	26%	7%	10%	89%	83%
Grant ES	375	335	89%	1.75	36%	10%	8%	95%	91%
Locust Street ES	340	134	39%	2.26	73%	28%	9%	41%	80%
Mary Paxton Keeley ES	723	630	87%	2.01	33%	14%	8%	84%	87%
Midway Heights ES	295	253	86%	1.50	27%	4%	9%	83%	81%
Mill Creek ES	673	588	87%	1.27	17%	7%	7%	85%	88%
New Haven ES	293	280	96%	2.20	59%	21%	14%	97%	90%
Parkade ES	478	431	90%	2.08	52%	15%	10%	87%	77%
Rock Bridge ES	650	566	87%	1.78	37%	12%	9%	84%	90%
Russell Boulevard ES	482	486	101%	1.14	17%	4%	4%	103%	97%
Shepard Boulevard ES	652	551	85%	2.46	61%	15%	12%	81%	82%
Two Mile Prairie ES	195	152	78%	1.86	32%	2%	9%	78%	75%
West Boulevard ES	438	330	75%	2.29	55%	10%	12%	78%	73%
<b>ELEMENTARY SUBTOTAL</b>	<b>10,510</b>	<b>8,307</b>	<b>79%</b>	<b>1.95</b>	<b>43%</b>	<b>11%</b>	<b>10%</b>	<b>79%</b>	<b>80%</b>
Gentry	706	784	111%	1.59	30%	5%	9%	116%	105%
Jefferson	659	334	51%	2.15	47%	9%	10%	55%	94%
John Warner	700	547	78%	1.09	13%	3%	7%	81%	79%
Lange	715	628	88%	2.54	59%	9%	16%	90%	76%
Oakland	675	547	81%	2.42	53%	10%	13%	95%	83%
Smithton	704	512	73%	1.49	25%	9%	10%	80%	76%
West	777	709	91%	2.07	53%	8%	16%	100%	68%
<b>MIDDLE SUBTOTAL</b>	<b>4,936</b>	<b>4,061</b>	<b>82%</b>	<b>1.90</b>	<b>41%</b>	<b>7%</b>	<b>12%</b>	<b>88%</b>	<b>84%</b>
Battle	1,800	1,554	86%	2.49	47%	9%	12%	87%	84%
Hickman	2,125	2,081	98%	1.83	34%	6%	12%	107%	95%
Rock Bridge	1,800	2,029	113%	1.40	18%	3%	7%	120%	115%
<b>HIGH SUBTOTAL</b>	<b>5,725</b>	<b>5,664</b>	<b>99%</b>	<b>1.86</b>	<b>33%</b>	<b>6%</b>	<b>11%</b>	<b>105%</b>	<b>102%</b>
<b>TOTAL</b>	<b>21,171</b>	<b>18,032</b>	<b>85%</b>	<b>1.91</b>	<b>41%</b>	<b>9%</b>	<b>10%</b>	<b>89%</b>	<b>87%</b>

# Current State



Walkability	
ES	29.0%
MS	17.5%
HS	21.7%

Attend Closest School	
ES	55%
MS	62%
HS	86%

Elementary to Middle Feeders	Gentry	Jefferson	John Warner	Lange	Oakland	Smithton	West
Alpha Hart Lewis ES				60%			40%
Battle ES				100%			
Benton ES		100%					
Beulah Ralph ES			100%				
Blue Ridge ES					100%		
Cedar Ridge ES					100%		
Derby Ridge ES				81%			19%
Fairview ES	1%					89%	10%
Grant ES	47%	53%					
Locust Street ES		100%					
Mary Paxton Keeley ES						73%	27%
Midway Heights ES						100%	
Mill Creek ES	36%		64%				
New Haven ES	82%				18%		
Parkade ES							100%
Rock Bridge ES	100%						
Russell Boulevard ES	66%						34%
Shepard Boulevard ES		34%		28%	39%		
Two Mile Prairie ES				100%			
West Boulevard ES							100%

Middle to High Feeders	Battle	Hickman	Rock Bridge
Gentry			100%
Jefferson (boundary only)		100%	
John Warner			100%
Lange	100%		
Oakland	100%		
Smithton		100%	
West		100%	

# Live/Attend

Columbia Public Schools 2023-24 Live/Attend Analysis K - 5 Students		Attend School																				Grand Total	Transfer-out	Transfer-out %				
		Alpha Hart Lewis Elementary School	Elliot Battle Elementary	Benton STEM Elementary School	Beulah Ralph Elementary	Blue Ridge Elementary School	Cedar Ridge Elementary School	Derby Ridge Elementary School	Fairview Elementary School	Grant Elementary School	Locust Street Expressive Arts Elementary School	Mary Paxton Keeley Elementary School	Midway Heights Elementary School	Mill Creek Elementary School	New Haven Elementary School	Parkade Elementary School	Rock Bridge Elementary School	Russell Boulevard Elementary School	Shepard Boulevard Elementary School	Two Mile Prairie Elementary School	West Boulevard Elementary School				Ridgeway Elementary School	Eugene Field Center		
Live Boundary	Alpha Hart Lewis ES Boundary	424	3	24	2	2	2	5	4	3	15	5		1	2	5	2	2	1	2	4	18	526	102	19%			
	Battle ES Boundary	4	324	10		3	5	4		1	5			4		2	1	1	3		3	15	385	61	16%			
	Benton ES Boundary		1	118	1		10		1	1	1								16	1	5		5	160	42	26%		
	Beulah Ralph ES Boundary		1	3	608	1	2		5	3	3	3		11			8	3	4			14	6	675	67	10%		
	Blue Ridge ES Boundary	4	2	3	2	448		5	1	1	9		1		2	6			1		1	1	10	497	49	10%		
	Cedar Ridge ES Boundary	1	7	5	2	412	3	1	2	12	3				4	3	5		5	1	2	8	13	489	77	16%		
	Derby Ridge ES Boundary	2	5	8	4	3					327	2	8				7						3	1	20	395	68	17%
	Fairview ES Boundary			1	9											2		6			2	4	14	473	51	11%		
	Grant ES Boundary		2	3											2	1	3	4	1					334	23	7%		
	Locust St. Expr. Arts ES Boundary		1	2		1	1										2						2	134	14	10%		
	Mary Paxton Keeley ES Boundary			1	2	3	1		3	2	8	582	2	3			1	7					5	13	633	51	8%	
	Midway Heights ES Boundary			1	1	1					3	8	229			1	4				2	3	2	254	25	10%		
	Mill Creek ES Boundary	2		2	14	1			2	1	5	2		537			1					3	8	10	588	51	9%	
	New Haven ES Boundary	1		1	4	3	2	3			1				244	1	6	4		2	1		6	279	35	13%		
	Parkade ES Boundary	1	2	10	1	3	7	3	1		10	6	1	6		335	3				3	4	38	434	99	23%		
	Rock Bridge ES Boundary	1	3	2	4	1	3				6	1		3	5	2	520	4	4			2	3	564	44	8%		
	Russell Boulevard ES Boundary			5	3	2		5	5	9	4	4		2		2	427	2		2	3	13	484	57	12%			
	Shepard Boulevard ES Boundary	3	5	13		8	4	6	2	4	21	4	2		3	1	3	2	458		1	1	9	550	92	17%		
	Two Mile Prairie ES Boundary		2	1		3		1	2								1						2	154	13	8%		
	West Boulevard ES Boundary		1	11	6	1	2	2	5		5	8	1		1	4	1	4	1		254		23	330	76	23%		
	Out of District	1	2		1		6	4	2	1	1	2			3	1	2	4	6	1			4	41	-	-		
	Unmatched		3	2			1	1				2						1						11	-	-		
	Grand Total	444	364	225	662	483	460	361	458	341	258	631	238	571	265	370	569	466	505	147	288	58	226					
	Live & Attend	424	324	118	608	448	412	327	422	311	120	582	229	537	244	335	520	427	458	141	254	-	-					
	Transfer-in	20	40	107	54	35	48	34	36	30	138	49	9	34	21	35	49	39	47	6	34	-	-					
	Transfer-in %	5%	11%	48%	8%	7%	10%	9%	8%	9%	53%	8%	4%	6%	8%	9%	9%	8%	9%	4%	12%	-	-					
			Total K - 5 Students:																				8,453					

Data Source: Columbia Public Schools Student Data

Columbia Public Schools 2023-24 Live/Attend Analysis 6 - 8 Students		Attend School							Grand Total	Transfer-out	Transfer-out %	
		Gentry Middle School	Jefferson Middle School	Lange Middle School	Oakland Middle School	Smithton Middle School	John Warner Middle School	West Middle School				Juvenile Justice Center
Live Boundary	Gentry MS Boundary	684	54	2	7	7	22	1		777	93	12%
	Jefferson MS Boundary	6	303	1	18	1	2	1		332	29	9%
	Lange MS Boundary	6	60	517	28	8	4	8		631	114	18%
	Oakland MS Boundary	8	52	8	473	5	1	5	1	553	80	14%
	Smithton MS Boundary	3	47	1		451	5	5		512	61	12%
	Warner MS Boundary	11	15	1	3	3	514			547	33	6%
	West MS Boundary	18	88	10	27	52	5	506		706	200	28%
	Out of District	3	1		1	5	1	1		12	-	-
	Unmatched	1	1	1	1		2			6	-	-
	Grand Total	740	621	541	558	532	556	527	1	Total 6 - 8 Students: 4,136		
Live & Attend	684	303	517	473	451	514	506	-				
Transfer-in	56	318	24	85	81	42	21	-				
Transfer-in %	8%	51%	4%	15%	15%	8%	4%	-				

Data Source: Columbia Public Schools Student Data

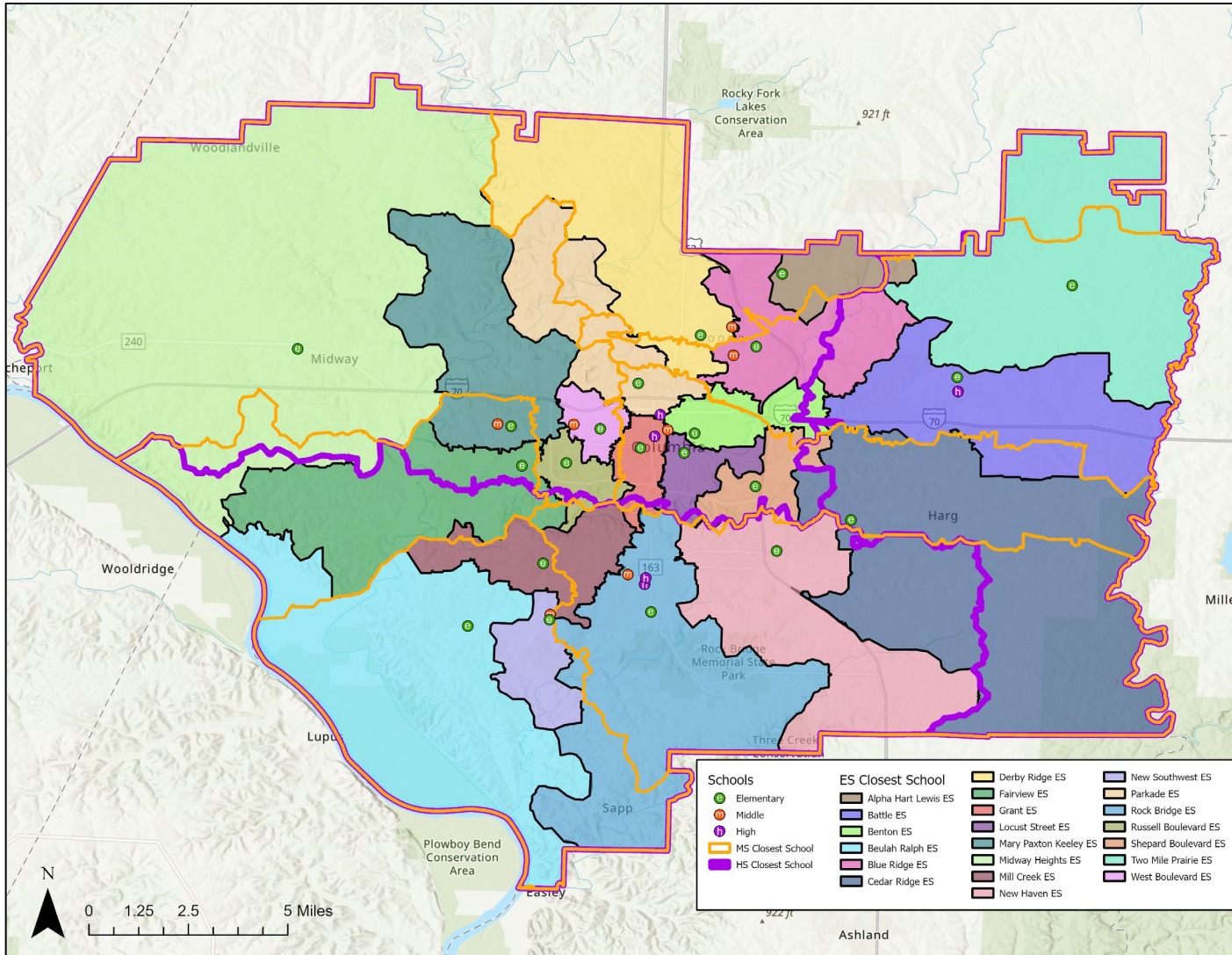
Columbia Public Schools 2023-24 Live/Attend Analysis 9 - 12 Students		Attend School					Grand Total	Transfer-out	Transfer-out %	
		Muriel Battle High School	Hickman High School	Rock Bridge High School	Columbia Area Career Center	Douglas High School				Juvenile Justice Center
Live Boundary	Battle HS Boundary	1,433	57	24		65		1,579	146	9%
	Hickman HS Boundary	48	1,906	52		87	1	2,094	188	9%
	Rock Bridge HS Boundary	14	32	1,957		25	2	2,030	73	4%
	Out of District	3	14	16		38	3	76	38	50%
	Unmatched	3	6	5	1	1	1	17	11	65%
	Grand Total	1,501	2,015	2,054	39	181	6	Total 9 - 12 Students: 5,841		
	Live & Attend	1,433	1,906	1,957	38	87	-			
Transfer-in	68	109	97	1	94	-				
Transfer-in %	5%	5%	5%	3%	52%	-				

Data Source: Columbia Public Schools Student Data



# Closest School

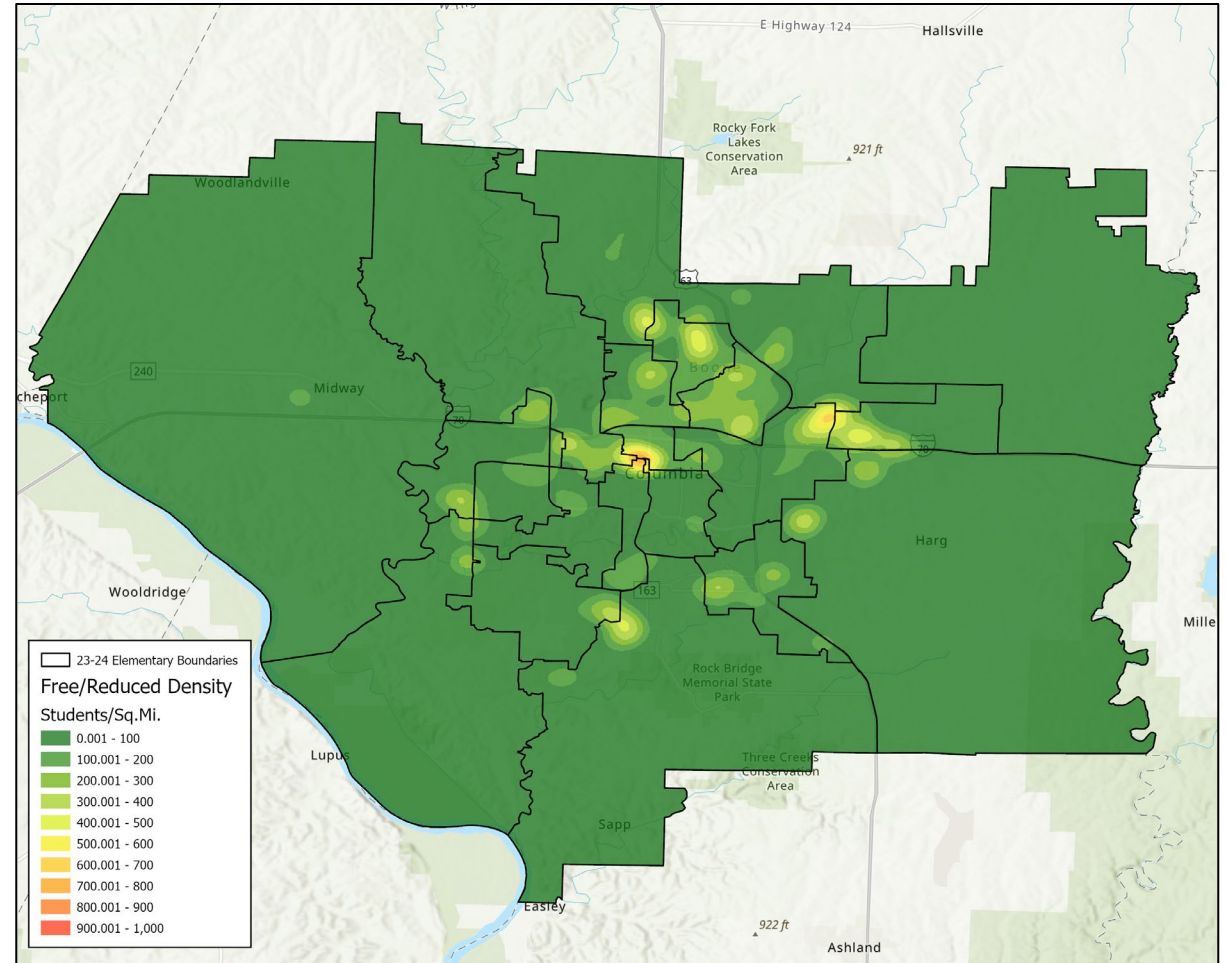
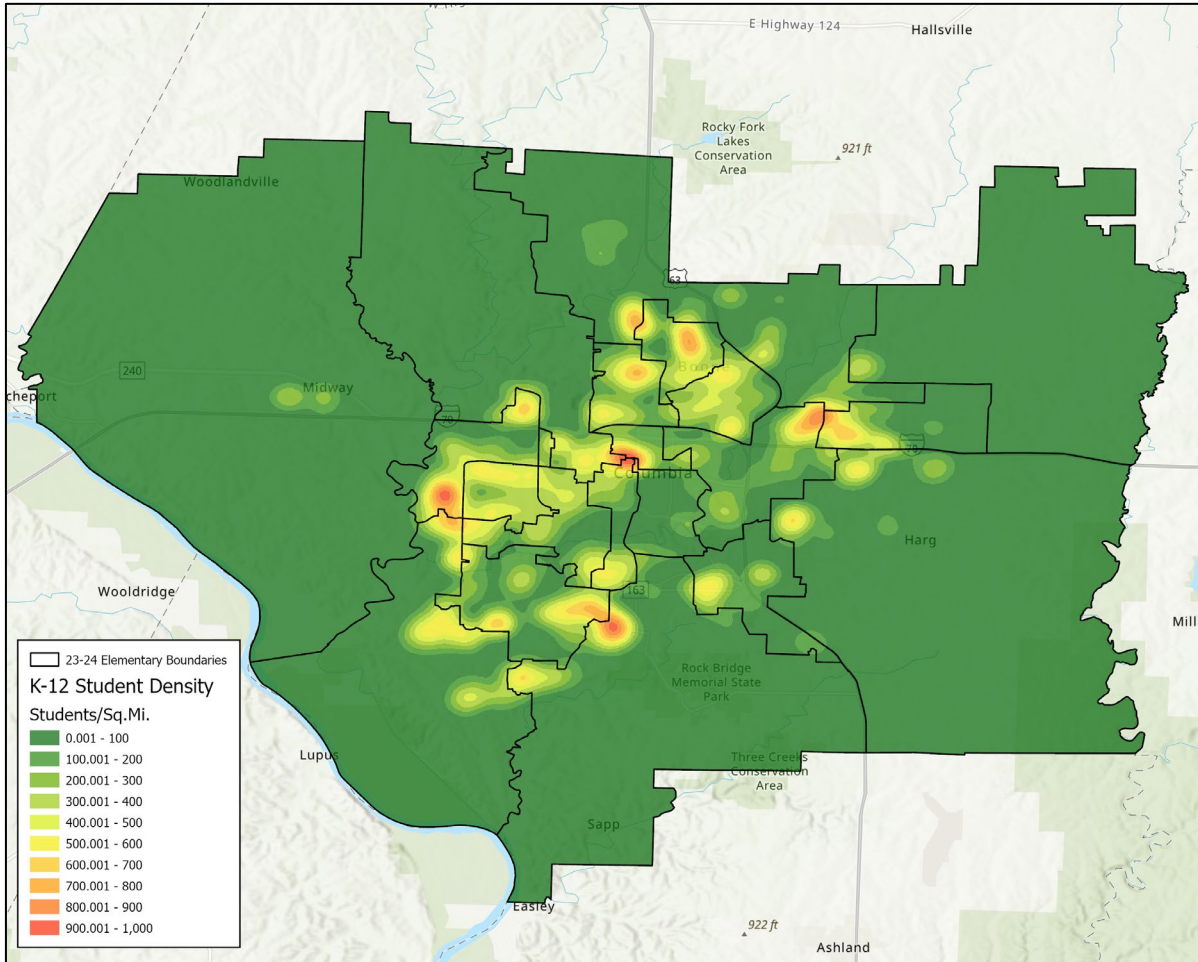
(not an option- imbalanced utilizations)



Attendance Area	2025-26 Capacity	Closest School Enroll.	Closest School Util.	Diversity Index	Low SES %	EL %	IEP %
Alpha Hart Lewis ES	650	60	9%	2.35	42%	20%	20%
Battle ES	650	474	73%	2.51	64%	9%	14%
Benton ES	260	348	134%	2.73	71%	19%	14%
Beulah Ralph ES	650	583	90%	1.00	5%	5%	7%
Blue Ridge ES	500	729	146%	2.73	63%	14%	12%
Cedar Ridge ES	650	451	69%	1.80	41%	5%	7%
Derby Ridge ES	556	793	143%	2.38	55%	12%	15%
Fairview ES	550	908	165%	1.43	20%	5%	9%
Grant ES	375	330	88%	2.42	58%	11%	12%
Street Expressive Arts ES	340	88	26%	2.17	65%	35%	6%
Mary Paxton Keeley	723	537	74%	2.08	37%	17%	9%
Midway Heights ES	295	223	76%	1.60	30%	4%	8%
Mill Creek ES	673	501	74%	1.27	21%	7%	7%
New Haven ES	293	362	124%	2.24	53%	17%	14%
Parkade ES	478	410	86%	2.20	57%	18%	10%
Rock Bridge ES	650	596	92%	1.95	44%	14%	8%
Russell Boulevard ES	650	252	39%	1.06	23%	4%	4%
Shepard Boulevard ES	652	162	25%	1.78	41%	14%	7%
Two Mile Prairie ES	195	46	24%	1.67	41%	0%	20%
West Boulevard ES	438	243	55%	2.28	58%	10%	13%
New Southwest ES	650	211	32%	1.00	17%	7%	8%
<b>ELEMENTARY SUBTOTAL</b>	<b>10,878</b>	<b>8,307</b>	<b>76%</b>	<b>1.95</b>	<b>43%</b>	<b>11%</b>	<b>10%</b>
Gentry	706	637	90%	1.77	35%	7%	9%
Jefferson	659	578	88%	2.17	52%	8%	12%
John Warner	700	566	81%	1.02	12%	3%	7%
Lange	715	420	59%	2.33	59%	9%	17%
Oakland	675	792	117%	2.54	57%	8%	15%
Smithton	704	549	78%	1.48	25%	8%	11%
West	777	519	67%	1.84	41%	9%	13%
<b>MIDDLE SUBTOTAL</b>	<b>4,936</b>	<b>4,061</b>	<b>82%</b>	<b>1.90</b>	<b>41%</b>	<b>7%</b>	<b>12%</b>
Battle	1,800	730	41%	2.31	37%	4%	10%
Hickman	2,125	2772	130%	2.08	37%	7%	10%
Rock Bridge	1,800	2162	120%	1.42	16%	3%	6%
<b>HIGH SUBTOTAL</b>	<b>5,725</b>	<b>5,664</b>	<b>99%</b>	<b>1.86</b>	<b>33%</b>	<b>6%</b>	<b>11%</b>
<b>TOTAL</b>	<b>21,539</b>	<b>18,032</b>	<b>84%</b>	<b>1.91</b>	<b>43%</b>	<b>9%</b>	<b>12%</b>

# Student Density

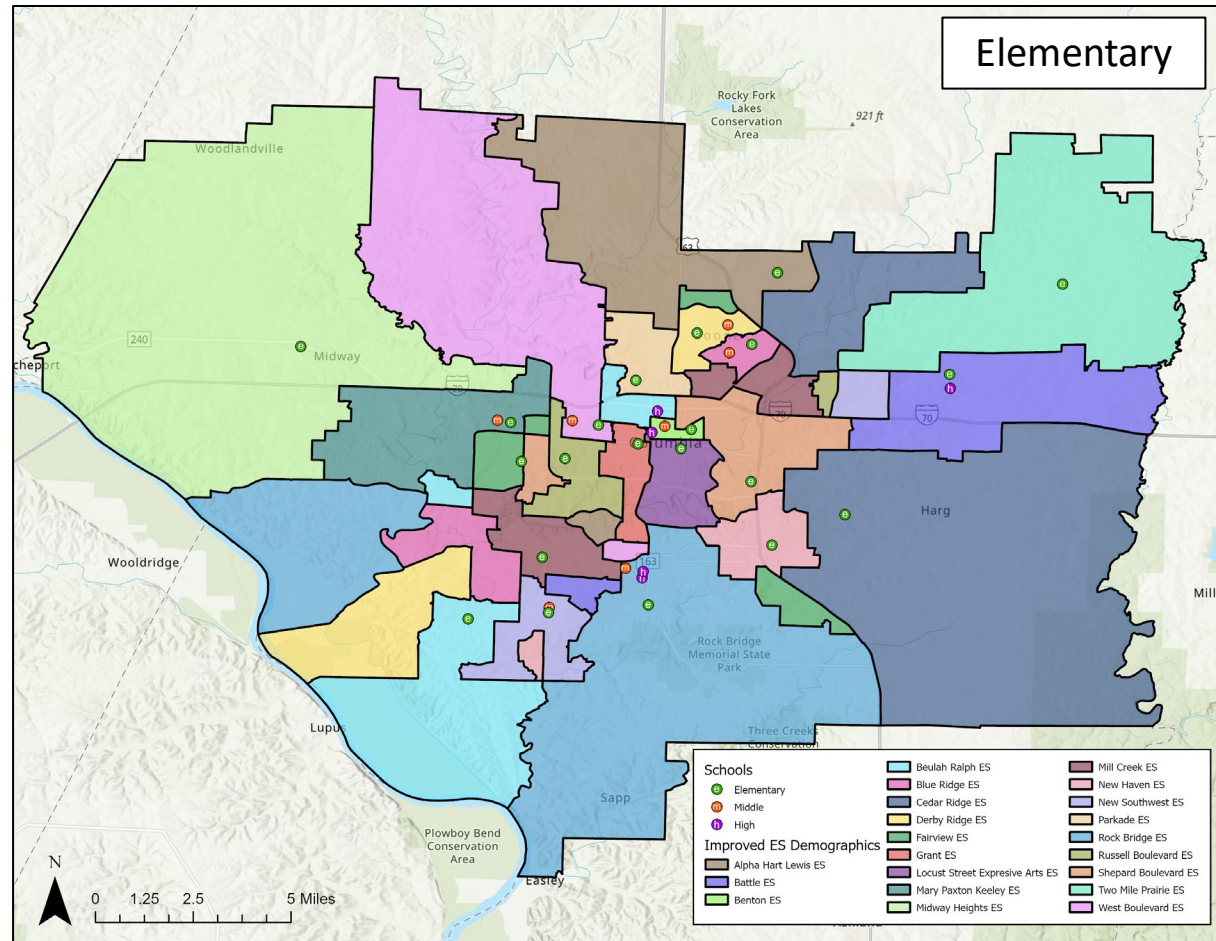
## ALL STUDENTS



## SOCIOECONOMICALLY DISADVANTAGED STUDENTS

# Balanced Demographics Attendance Areas

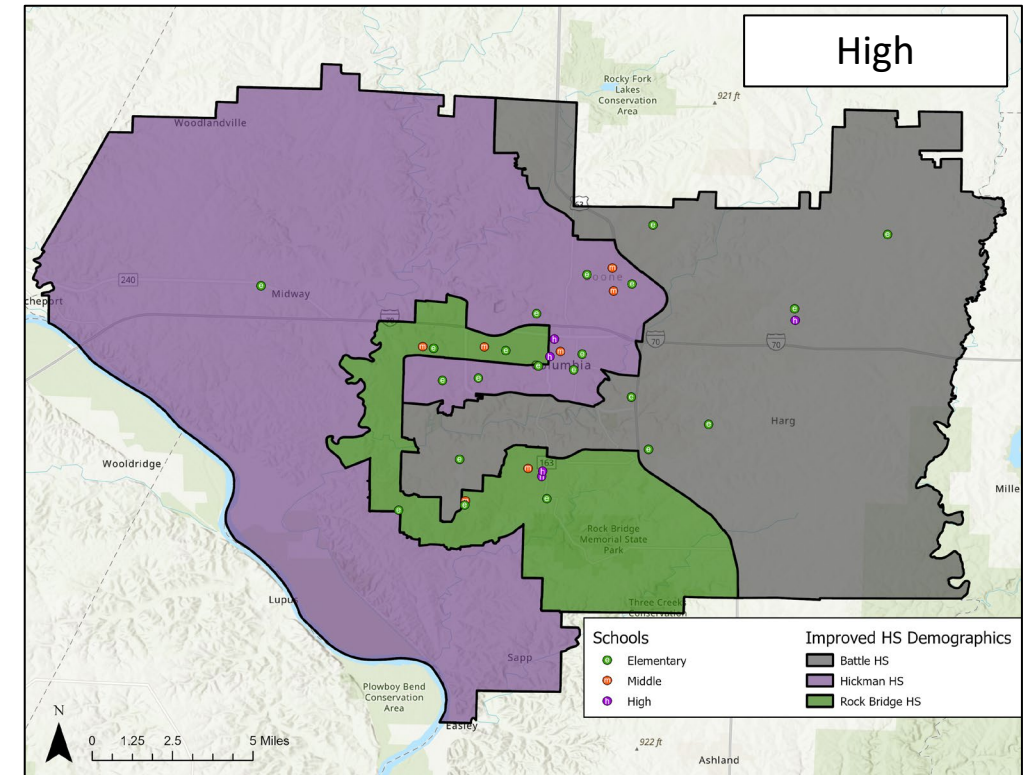
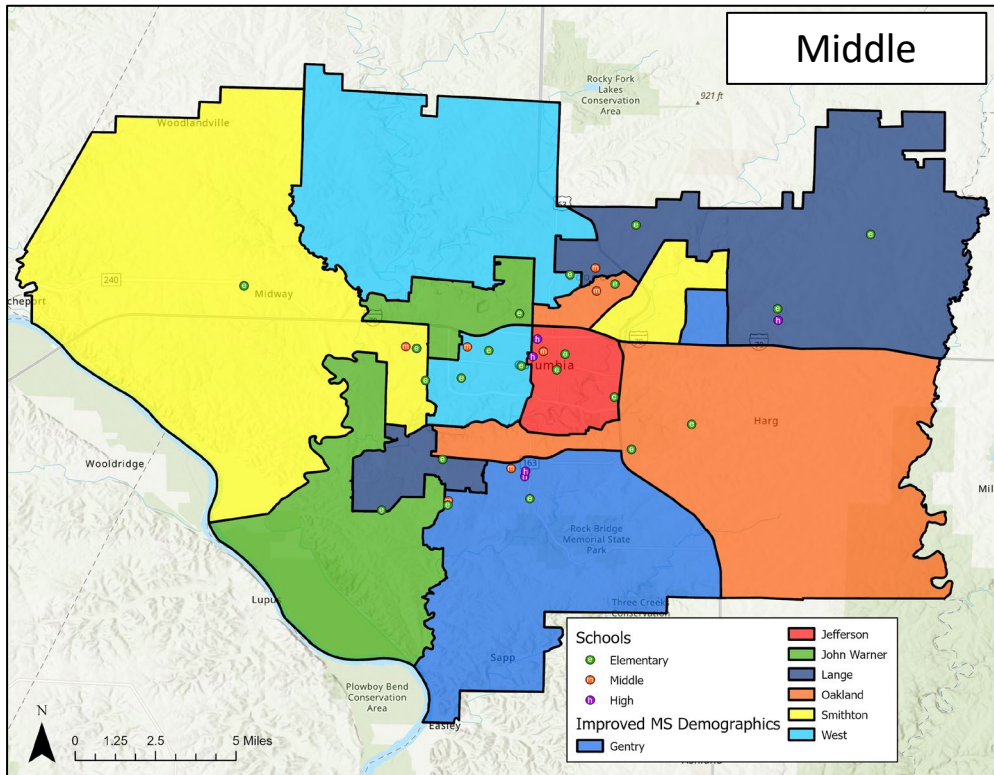
(not an option- infeasible for transportation)



Attendance Area	2025-26 Capacity	K-12 Live-In Enrollment	Live-In Utilization	Diversity Index	Low SES %	EL %	IEP %	2028-29 Utilization
Alpha Hart Lewis ES	650	478	74%	1.92	48%	10%	12%	71%
Battle ES	650	524	81%	1.91	47%	7%	8%	83%
Benton ES	260	77	30%	2.75	79%	16%	21%	33%
Beulah Ralph ES	650	527	81%	1.64	32%	9%	10%	75%
Blue Ridge ES	500	437	87%	1.96	37%	9%	10%	88%
Cedar Ridge ES	650	457	70%	2.11	39%	10%	10%	74%
Derby Ridge ES	556	452	81%	2.09	38%	9%	13%	83%
Fairview ES	550	431	78%	1.67	36%	12%	12%	80%
Grant ES	375	301	80%	2.00	42%	11%	8%	83%
Locust Street ES	340	134	39%	2.26	73%	28%	9%	41%
Mary Paxton Keeley ES	723	592	82%	1.98	32%	13%	8%	79%
Midway Heights ES	295	237	80%	1.74	35%	5%	9%	78%
Mill Creek ES	673	542	81%	2.18	41%	16%	11%	82%
New Haven ES	293	255	87%	1.86	41%	17%	9%	84%
Parkade ES	478	345	72%	2.10	50%	12%	10%	70%
Rock Bridge ES	650	502	77%	1.98	40%	12%	11%	76%
Russell Boulevard ES	650	506	78%	1.82	48%	8%	9%	80%
Shepard Boulevard ES	652	572	88%	2.05	48%	13%	9%	89%
Two Mile Prairie ES	195	157	81%	1.94	30%	3%	10%	81%
West Boulevard ES	438	301	69%	1.93	47%	10%	11%	73%
New Southwest ES	650	480	74%	1.84	47%	9%	13%	72%
<b>ELEMENTARY SUBTOTAL</b>	<b>10,878</b>	<b>8,307</b>	<b>76%</b>	<b>1.95</b>	<b>43%</b>	<b>11%</b>	<b>10%</b>	<b>76%</b>

# Balanced Demographics Attendance Areas

(not an option- infeasible for transportation)



Attendance Area	2025-26 Capacity	K-12 Live-In Enrollment	Live-In Utilization	Diversity Index	Low SES %	EL %	IEP %	2028-29 Utilization
Gentry	706	658	93%	1.86	40%	6%	11%	96%
Jefferson	659	205	31%	2.25	51%	11%	11%	35%
John Warner	700	663	95%	1.83	36%	7%	11%	100%
Lange	715	646	90%	1.78	32%	6%	12%	95%
Oakland	675	603	89%	2.05	45%	8%	11%	99%
Smithton	704	572	81%	1.95	37%	7%	12%	92%
West	777	714	92%	1.84	47%	7%	14%	98%
<b>MIDDLE SUBTOTAL</b>	<b>4,936</b>	<b>4,061</b>	<b>82%</b>	<b>1.90</b>	<b>41%</b>	<b>7%</b>	<b>12%</b>	<b>88%</b>

Attendance Area	2025-26 Capacity	K-12 Live-In Enrollment	Live-In Utilization	Diversity Index	Low SES %	EL %	IEP %	2028-29 Utilization
Battle	1,800	1,793	100%	1.91	32%	5%	10%	98%
Hickman	2,125	2,056	97%	1.88	35%	7%	11%	106%
Rock Bridge	1,800	1,815	101%	1.78	28%	6%	10%	111%
<b>HIGH SUBTOTAL</b>	<b>5,725</b>	<b>5,664</b>	<b>99%</b>	<b>1.86</b>	<b>33%</b>	<b>6%</b>	<b>11%</b>	<b>105%</b>
<b>TOTAL</b>	<b>21,539</b>	<b>18,032</b>	<b>84%</b>	<b>1.91</b>	<b>41%</b>	<b>9%</b>	<b>12%</b>	<b>89%</b>

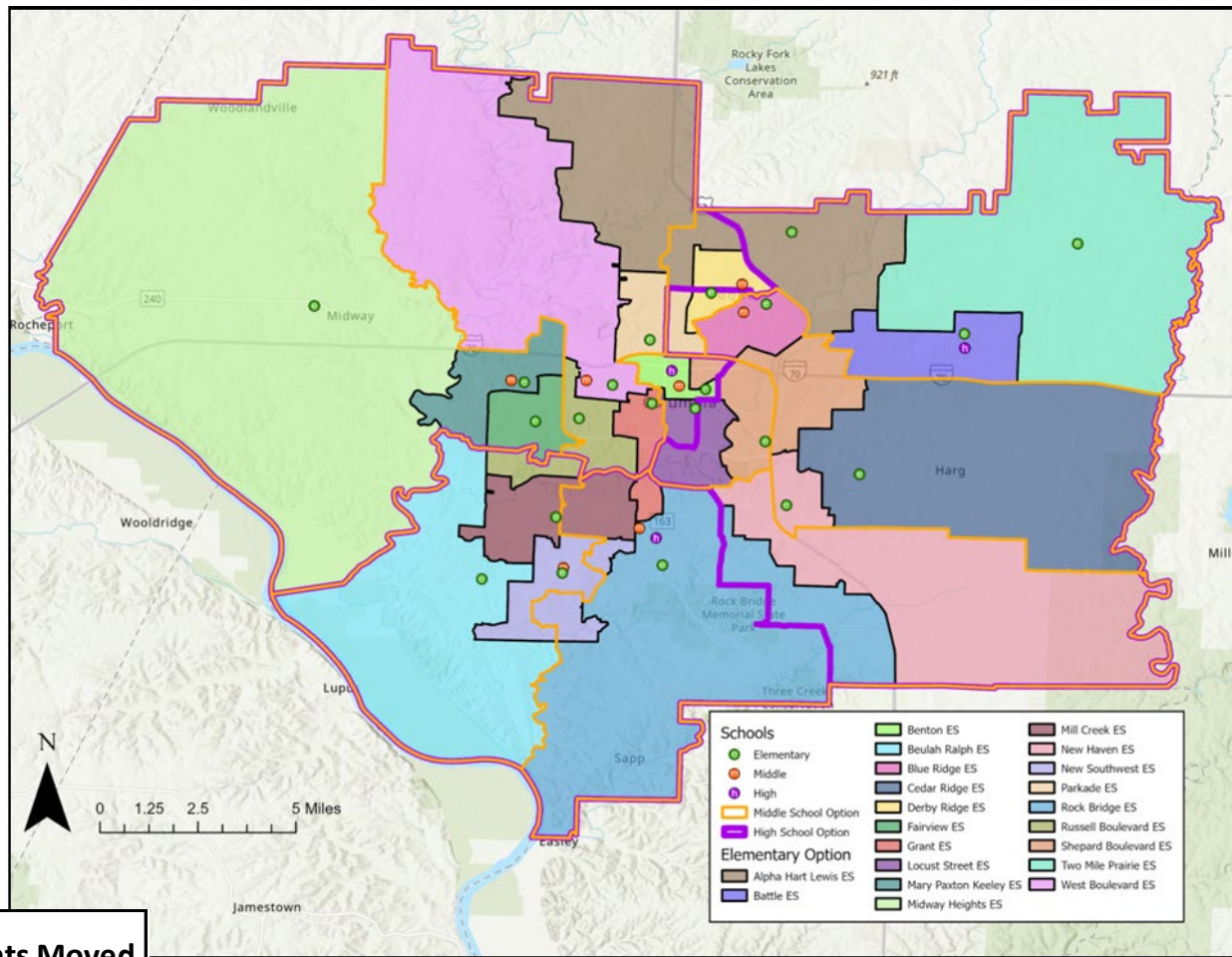


# INITIAL OPTIONS



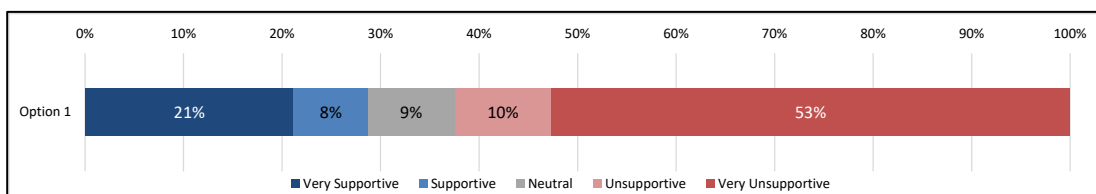
# Option 1

Attendance Area	2025-26 Capacity	K-12 Live-In Enrollment	Live-In Utilization	Diversity Index	Low SES %	EL %	IEP %	2028-29 Utilization
Alpha Hart Lewis ES	650	549	84%	2.29	55%	15%	14%	80%
Battle ES	650	498	77%	2.63	68%	9%	15%	79%
Benton ES	260	157	60%	2.76	73%	13%	17%	67%
Beulah Ralph ES	650	548	84%	1.26	17%	5%	9%	72%
Blue Ridge ES	500	360	72%	2.94	68%	19%	11%	80%
Cedar Ridge ES	650	473	73%	1.84	41%	4%	8%	78%
Derby Ridge ES	556	359	65%	2.76	58%	14%	17%	72%
Fairview ES	550	440	80%	1.28	23%	7%	9%	79%
Grant ES	375	292	78%	1.86	37%	11%	9%	82%
Locust Street ES	340	134	39%	2.26	73%	28%	9%	41%
Mary Paxton Keeley ES	723	579	80%	2.00	32%	13%	8%	77%
Midway Heights ES	295	253	86%	1.50	27%	4%	9%	83%
Mill Creek ES	673	528	78%	1.17	12%	7%	6%	79%
New Haven ES	293	241	82%	2.20	62%	22%	13%	82%
Parkade ES	478	431	90%	2.08	52%	15%	10%	87%
Rock Bridge ES	650	472	73%	2.05	42%	13%	10%	71%
Russell Boulevard ES	650	447	69%	1.39	27%	6%	7%	72%
Shepard Boulevard ES	652	562	86%	2.48	62%	18%	11%	85%
Two Mile Prairie ES	195	162	83%	1.86	32%	2%	9%	84%
West Boulevard ES	438	317	72%	2.35	56%	11%	12%	75%
New Southwest ES	650	505	78%	1.16	22%	8%	8%	73%
<b>ELEMENTARY SUBTOTAL</b>	<b>10,878</b>	<b>8,307</b>	<b>76%</b>	<b>1.95</b>	<b>43%</b>	<b>11%</b>	<b>10%</b>	<b>76%</b>
Gentry	706	671	95%	1.63	32%	5%	9%	99%
Jefferson	659	236	36%	2.35	55%	11%	12%	41%
John Warner	700	654	93%	1.14	14%	3%	7%	98%
Lange	715	691	97%	2.49	60%	9%	16%	96%
Oakland	675	559	83%	2.46	55%	10%	13%	96%
Smithton	704	583	83%	1.67	29%	9%	11%	92%
West	777	667	86%	1.88	47%	7%	14%	94%
<b>MIDDLE SUBTOTAL</b>	<b>4,936</b>	<b>4,061</b>	<b>82%</b>	<b>1.90</b>	<b>41%</b>	<b>7%</b>	<b>12%</b>	<b>88%</b>
Battle	1,800	1,739	97%	2.34	44%	10%	12%	104%
Hickman	2,125	2,116	100%	1.91	35%	6%	12%	104%
Rock Bridge	1,800	1,809	101%	1.34	16%	3%	7%	106%
<b>HIGH SUBTOTAL</b>	<b>5,725</b>	<b>5,664</b>	<b>99%</b>	<b>1.86</b>	<b>33%</b>	<b>6%</b>	<b>11%</b>	<b>105%</b>
<b>TOTAL</b>	<b>21,539</b>	<b>18,032</b>	<b>84%</b>	<b>1.91</b>	<b>41%</b>	<b>9%</b>	<b>12%</b>	<b>89%</b>



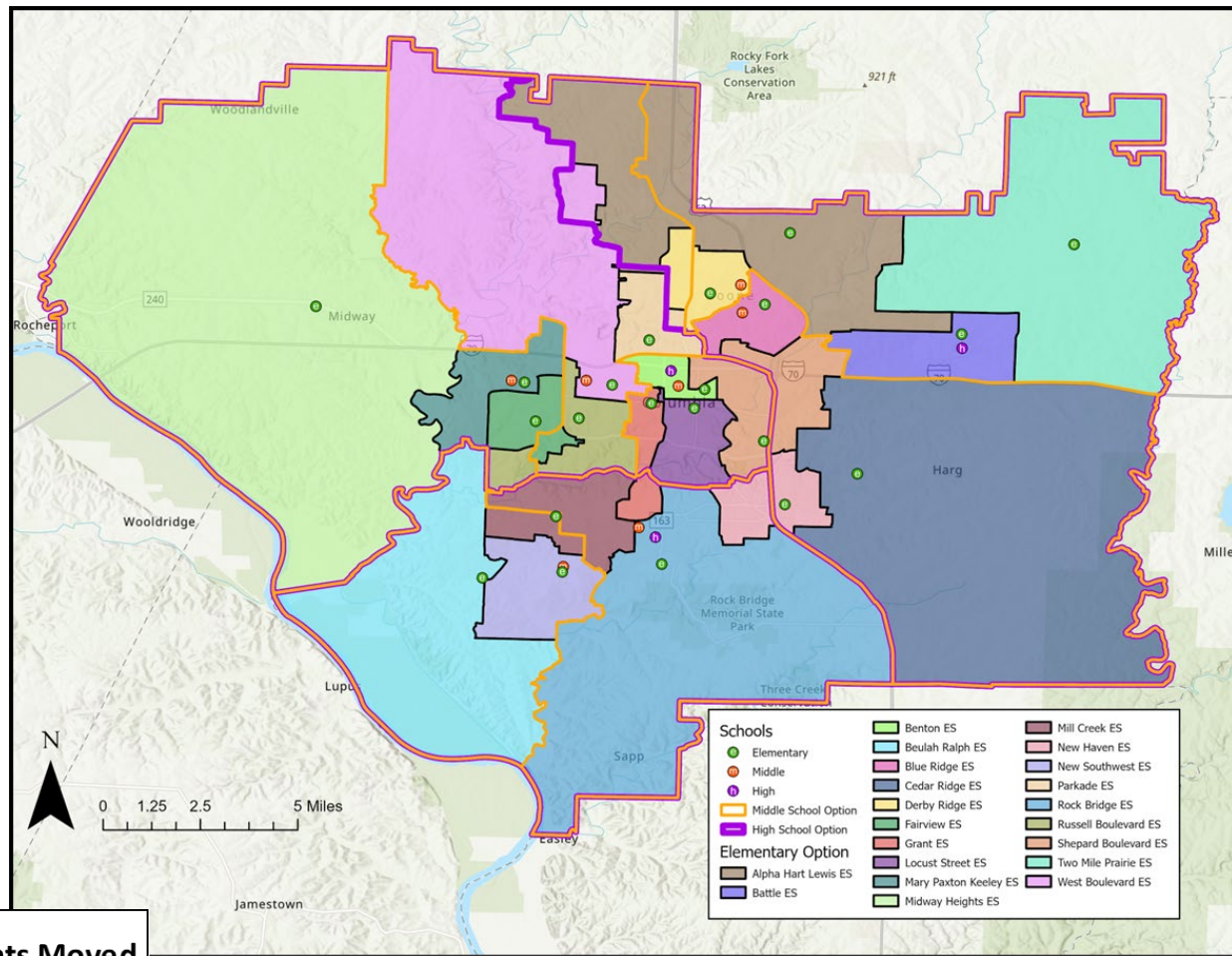
## Students Moved

ES	1,180	14%
MS	571	14%
HS	677	12%



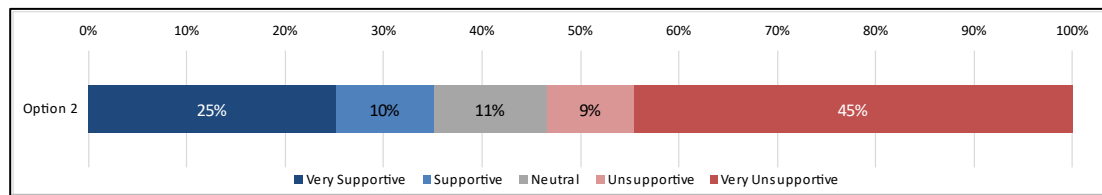
# Option 2

Attendance Area	2025-26 Capacity	K-12 Live-In Enrollment	Live-In Utilization	Diversity Index	Low SES %	EL %	IEP %	2028-29 Utilization
Alpha Hart Lewis ES	650	504	78%	2.32	52%	14%	13%	72%
Battle ES	650	475	73%	2.66	71%	9%	15%	75%
Benton ES	260	157	60%	2.76	73%	13%	17%	67%
Beulah Ralph ES	650	539	83%	1.25	17%	5%	9%	71%
Blue Ridge ES	500	388	78%	2.94	69%	19%	12%	87%
Cedar Ridge ES	650	523	80%	1.84	41%	5%	7%	85%
Derby Ridge ES	556	439	79%	2.55	56%	15%	17%	87%
Fairview ES	550	440	80%	1.28	23%	7%	9%	79%
Grant ES	375	304	81%	1.82	40%	11%	9%	87%
Locust Street ES	340	134	39%	2.26	73%	28%	9%	41%
Mary Paxton Keeley ES	723	602	83%	1.97	31%	13%	8%	81%
Midway Heights ES	295	253	86%	1.50	27%	4%	9%	83%
Mill Creek ES	673	522	78%	1.28	21%	7%	5%	77%
New Haven ES	293	216	74%	2.26	55%	20%	13%	73%
Parkade ES	478	387	81%	2.09	53%	13%	10%	78%
Rock Bridge ES	650	459	71%	2.04	46%	13%	11%	69%
Russell Boulevard ES	650	501	77%	1.39	24%	6%	7%	80%
Shepard Boulevard ES	652	529	81%	2.51	63%	18%	12%	81%
Two Mile Prairie ES	195	152	78%	1.86	32%	2%	9%	78%
West Boulevard ES	438	328	75%	2.34	56%	10%	12%	77%
New Southwest ES	650	455	70%	1.06	13%	10%	8%	65%
<b>ELEMENTARY SUBTOTAL</b>	<b>10,878</b>	<b>8,307</b>	<b>76%</b>	<b>1.95</b>	<b>43%</b>	<b>11%</b>	<b>10%</b>	<b>76%</b>
Gentry	706	620	88%	1.67	33%	5%	8%	93%
Jefferson	659	314	48%	2.22	50%	9%	11%	52%
John Warner	700	597	85%	1.10	15%	4%	9%	87%
Lange	715	600	84%	2.52	59%	9%	15%	85%
Oakland	675	575	85%	2.45	54%	10%	13%	99%
Smithton	704	630	89%	1.68	27%	8%	10%	100%
West	777	725	93%	1.85	49%	7%	15%	100%
<b>MIDDLE SUBTOTAL</b>	<b>4,936</b>	<b>4,061</b>	<b>82%</b>	<b>1.90</b>	<b>41%</b>	<b>7%</b>	<b>12%</b>	<b>88%</b>
Battle	1,800	1,801	100%	2.42	47%	9%	12%	102%
Hickman	2,125	2,034	96%	1.77	30%	5%	11%	104%
Rock Bridge	1,800	1,829	102%	1.40	20%	4%	7%	109%
<b>HIGH SUBTOTAL</b>	<b>5,725</b>	<b>5,664</b>	<b>99%</b>	<b>1.86</b>	<b>33%</b>	<b>6%</b>	<b>11%</b>	<b>105%</b>
<b>TOTAL</b>	<b>21,539</b>	<b>18,032</b>	<b>84%</b>	<b>1.91</b>	<b>41%</b>	<b>9%</b>	<b>12%</b>	<b>89%</b>



**Students Moved**

ES	1,109	13%
MS	438	11%
HS	447	8%

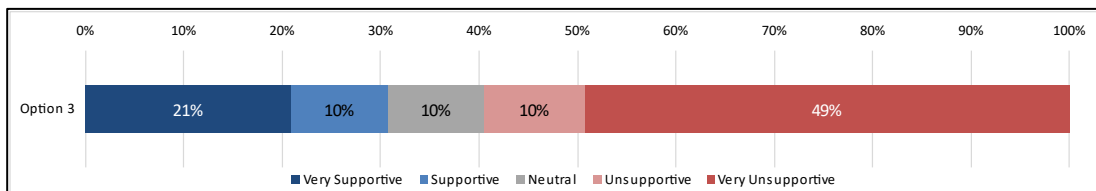
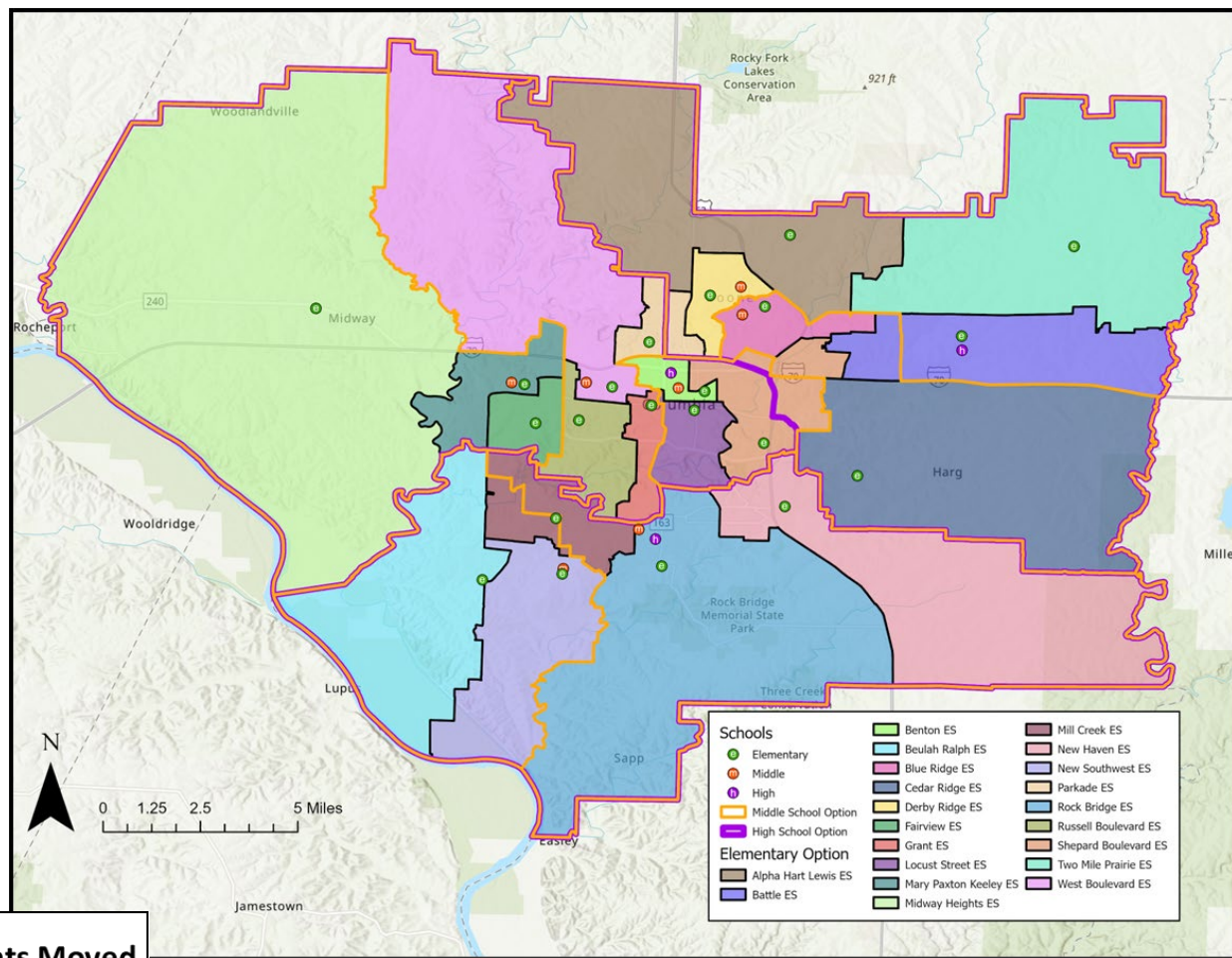


# Option 3

Attendance Area	2025-26 Capacity	K-12 Live-In Enrollment	Live-In Utilization	Diversity Index	Low SES %	EL %	IEP %	2028-29 Utilization
Alpha Hart Lewis ES	650	508	78%	2.24	57%	15%	15%	74%
Battle ES	650	507	78%	2.59	69%	8%	15%	80%
Benton ES	260	157	60%	2.76	73%	13%	17%	67%
Beulah Ralph ES	650	534	82%	1.26	17%	5%	9%	71%
Blue Ridge ES	500	333	67%	2.86	64%	14%	11%	73%
Cedar Ridge ES	650	509	78%	1.85	41%	5%	7%	83%
Derby Ridge ES	556	429	77%	2.80	59%	17%	16%	86%
Fairview ES	550	440	80%	1.28	23%	7%	9%	79%
Grant ES	375	304	81%	1.82	40%	11%	9%	87%
Locust Street ES	340	134	39%	2.26	73%	28%	9%	41%
Mary Paxton Keeley ES	723	602	83%	1.97	31%	13%	8%	81%
Midway Heights ES	295	253	86%	1.50	27%	4%	9%	83%
Mill Creek ES	673	524	78%	1.41	20%	7%	7%	77%
New Haven ES	293	214	73%	2.23	58%	20%	13%	72%
Parkade ES	478	382	80%	2.09	58%	15%	11%	77%
Rock Bridge ES	650	468	72%	2.06	45%	13%	10%	71%
Russell Boulevard ES	650	499	77%	1.26	25%	6%	6%	80%
Shepard Boulevard ES	652	526	81%	2.51	63%	18%	12%	81%
Two Mile Prairie ES	195	151	77%	2.08	29%	3%	9%	78%
West Boulevard ES	438	366	84%	2.30	49%	10%	11%	85%
New Southwest ES	650	467	72%	1.06	13%	10%	8%	67%
<b>ELEMENTARY SUBTOTAL</b>	<b>10,878</b>	<b>8,307</b>	<b>76%</b>	<b>1.95</b>	<b>43%</b>	<b>11%</b>	<b>10%</b>	<b>76%</b>
Gentry	706	576	82%	1.76	33%	7%	8%	89%
Jefferson	659	316	48%	2.41	58%	10%	13%	55%
John Warner	700	599	86%	1.13	15%	3%	9%	87%
Lange	715	643	90%	2.41	59%	9%	16%	93%
Oakland	675	623	92%	2.41	54%	7%	13%	99%
Smithton	704	601	85%	1.65	28%	9%	11%	95%
West	777	703	90%	1.73	40%	7%	13%	98%
<b>MIDDLE SUBTOTAL</b>	<b>4,936</b>	<b>4,061</b>	<b>82%</b>	<b>1.90</b>	<b>41%</b>	<b>7%</b>	<b>12%</b>	<b>88%</b>
Battle	1,800	1,788	99%	2.43	47%	9%	12%	101%
Hickman	2,125	2,083	98%	1.72	30%	5%	11%	105%
Rock Bridge	1,800	1,793	100%	1.45	19%	4%	7%	108%
<b>HIGH SUBTOTAL</b>	<b>5,725</b>	<b>5,664</b>	<b>99%</b>	<b>1.86</b>	<b>33%</b>	<b>6%</b>	<b>11%</b>	<b>105%</b>
<b>TOTAL</b>	<b>21,539</b>	<b>18,032</b>	<b>84%</b>	<b>1.91</b>	<b>41%</b>	<b>9%</b>	<b>12%</b>	<b>89%</b>

## Students Moved

ES	1,362	16%
MS	1,160	29%
HS	588	10%



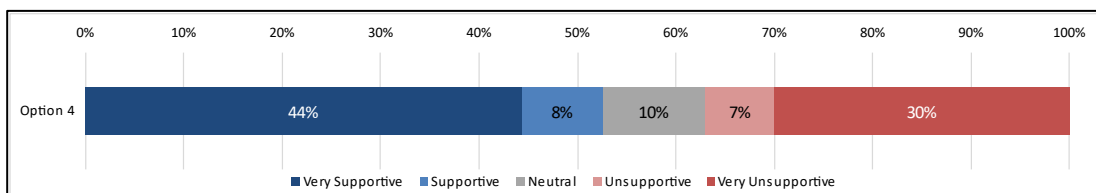
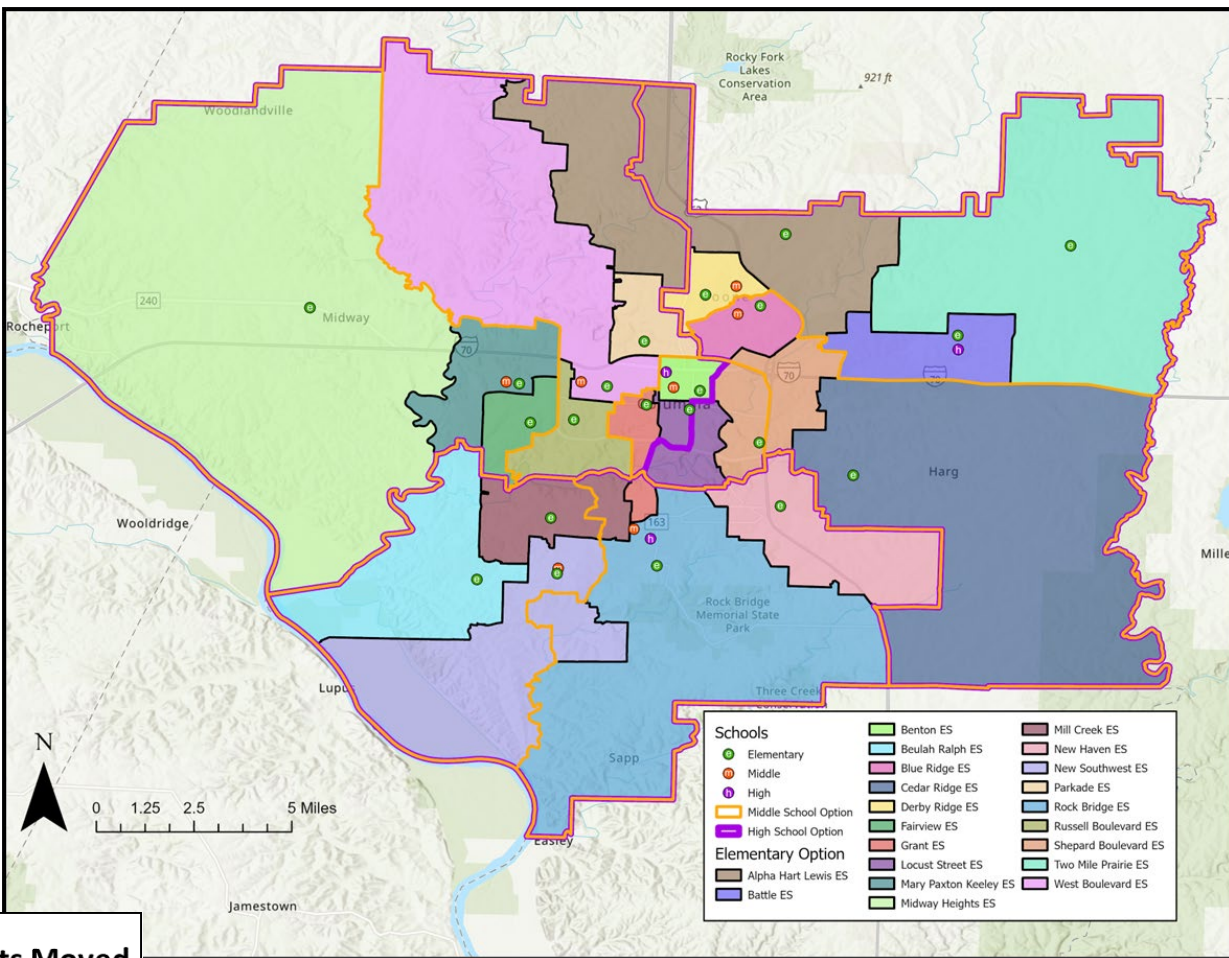


# Option 4

Attendance Area	2025-26 Capacity	K-12 Live-In Enrollment	Live-In Utilization	Diversity Index	Low SES %	EL %	IEP %	2028-29 Utilization
Alpha Hart Lewis ES	650	549	84%	2.29	55%	15%	14%	80%
Battle ES	650	498	77%	2.63	68%	9%	15%	79%
Benton ES	260	117	45%	2.50	76%	17%	17%	50%
Beulah Ralph ES	650	551	85%	1.25	16%	5%	9%	73%
Blue Ridge ES	500	360	72%	2.94	68%	19%	11%	80%
Cedar Ridge ES	650	516	79%	1.84	41%	5%	8%	84%
Derby Ridge ES	556	403	72%	2.68	57%	15%	16%	79%
Fairview ES	550	429	78%	1.41	23%	7%	9%	78%
Grant ES	375	292	78%	1.86	37%	11%	9%	82%
Locust Street ES	340	134	39%	2.26	73%	28%	9%	41%
Mary Paxton Keeley ES	723	629	87%	2.00	33%	13%	8%	84%
Midway Heights ES	295	253	86%	1.50	27%	4%	9%	83%
Mill Creek ES	673	497	74%	1.18	12%	7%	6%	75%
New Haven ES	293	234	80%	2.24	63%	23%	13%	80%
Parkade ES	478	387	81%	2.09	53%	13%	10%	78%
Rock Bridge ES	650	512	79%	2.07	47%	11%	11%	77%
Russell Boulevard ES	650	458	70%	1.26	26%	6%	7%	73%
Shepard Boulevard ES	652	504	77%	2.53	63%	18%	12%	77%
Two Mile Prairie ES	195	162	83%	1.86	32%	2%	9%	84%
West Boulevard ES	438	352	80%	2.43	56%	11%	12%	84%
New Southwest ES	650	470	72%	1.06	14%	10%	7%	68%
<b>ELEMENTARY SUBTOTAL</b>	<b>10,878</b>	<b>8,307</b>	<b>76%</b>	<b>1.95</b>	<b>43%</b>	<b>11%</b>	<b>10%</b>	<b>76%</b>
Gentry	706	638	90%	1.73	36%	7%	10%	96%
Jefferson	659	303	46%	2.06	44%	9%	10%	50%
John Warner	700	610	87%	1.10	13%	3%	7%	91%
Lange	715	634	89%	2.51	58%	9%	15%	91%
Oakland	675	543	80%	2.42	53%	8%	13%	92%
Smithton	704	616	88%	1.70	28%	9%	10%	98%
West	777	717	92%	1.89	51%	7%	16%	99%
<b>MIDDLE SUBTOTAL</b>	<b>4,936</b>	<b>4,061</b>	<b>82%</b>	<b>1.90</b>	<b>41%</b>	<b>7%</b>	<b>12%</b>	<b>88%</b>
Battle	1,800	1,694	94%	2.44	45%	9%	12%	99%
Hickman	2,125	2,085	98%	1.78	32%	5%	11%	103%
Rock Bridge	1,800	1,885	105%	1.43	20%	4%	7%	113%
<b>HIGH SUBTOTAL</b>	<b>5,725</b>	<b>5,664</b>	<b>99%</b>	<b>1.86</b>	<b>33%</b>	<b>6%</b>	<b>11%</b>	<b>105%</b>
<b>TOTAL</b>	<b>21,539</b>	<b>18,032</b>	<b>84%</b>	<b>1.91</b>	<b>41%</b>	<b>9%</b>	<b>12%</b>	<b>89%</b>

## Students Moved

ES	1,543	19%
MS	390	10%
HS	368	6%

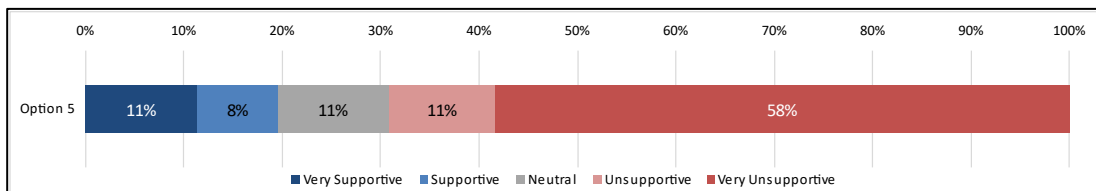
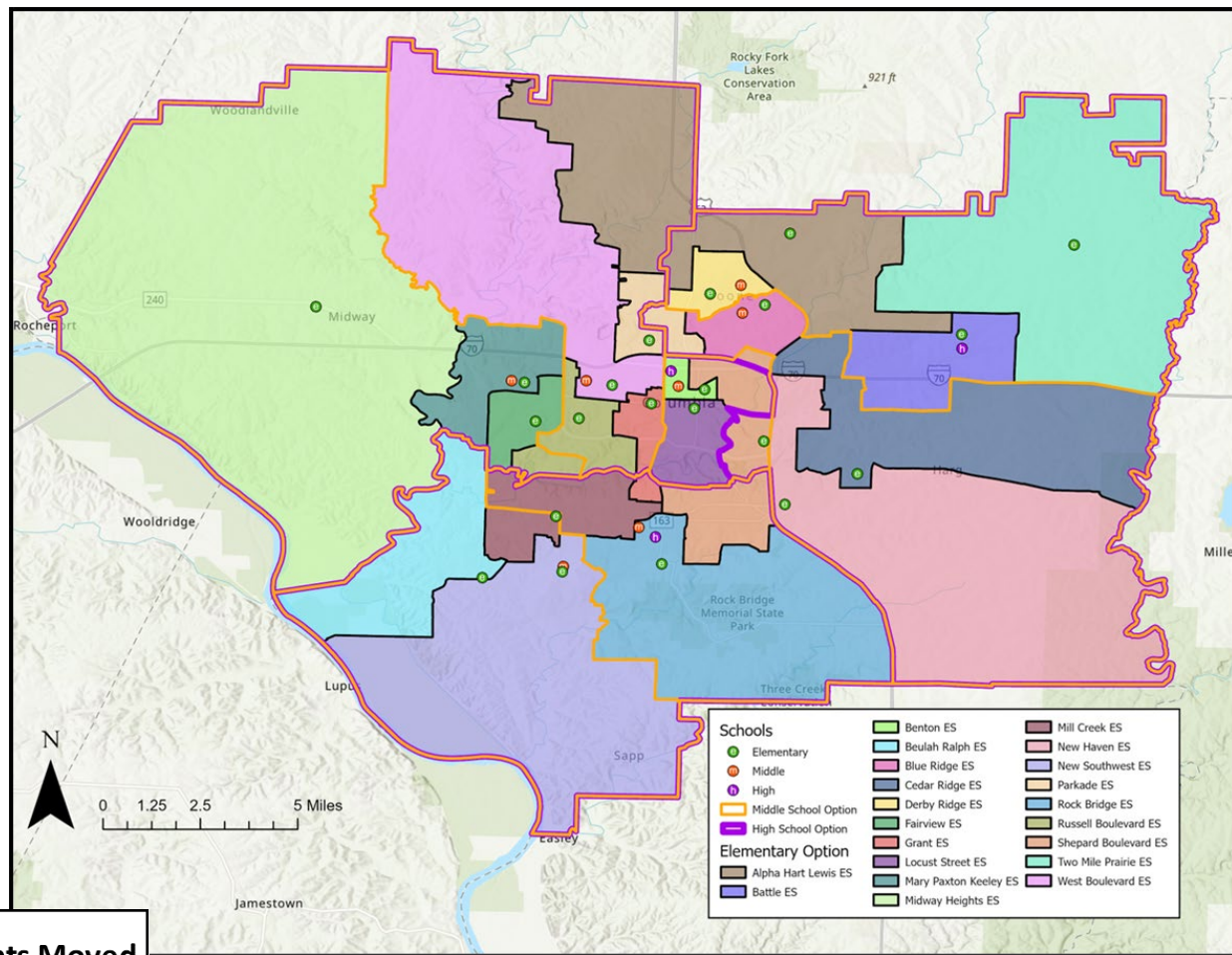


# Option 5

Attendance Area	2025-26 Capacity	K-12 Live-In Enrollment	Live-In Utilization	Diversity Index	Low SES %	EL %	IEP %	2028-29 Utilization
Alpha Hart Lewis ES	650	582	90%	2.28	53%	14%	13%	85%
Battle ES	650	511	79%	2.43	66%	8%	13%	83%
Benton ES	260	95	37%	2.61	77%	17%	19%	41%
Beulah Ralph ES	650	548	84%	1.26	16%	5%	9%	73%
Blue Ridge ES	500	374	75%	2.93	69%	19%	13%	83%
Cedar Ridge ES	650	575	88%	2.27	54%	9%	11%	88%
Derby Ridge ES	556	389	70%	2.68	56%	15%	15%	77%
Fairview ES	550	418	76%	1.40	23%	7%	9%	76%
Grant ES	375	267	71%	1.94	41%	12%	9%	74%
Locust Street ES	340	109	32%	2.09	67%	29%	7%	33%
Mary Paxton Keeley ES	723	606	84%	2.04	34%	13%	9%	81%
Midway Heights ES	295	253	86%	1.50	27%	4%	9%	83%
Mill Creek ES	673	558	83%	1.27	15%	7%	6%	85%
New Haven ES	293	208	71%	2.28	53%	22%	11%	61%
Parkade ES	478	387	81%	2.09	53%	13%	10%	78%
Rock Bridge ES	650	541	83%	1.92	45%	12%	10%	82%
Russell Boulevard ES	650	458	70%	1.26	26%	6%	7%	73%
Shepard Boulevard ES	652	486	75%	2.29	55%	14%	9%	82%
Two Mile Prairie ES	195	152	78%	1.86	32%	2%	9%	78%
West Boulevard ES	438	352	80%	2.43	56%	11%	12%	84%
New Southwest ES	650	438	67%	1.06	16%	9%	8%	62%
<b>ELEMENTARY SUBTOTAL</b>	<b>10,878</b>	<b>8,307</b>	<b>76%</b>	<b>1.95</b>	<b>43%</b>	<b>11%</b>	<b>10%</b>	<b>76%</b>
Gentry	706	609	86%	1.70	33%	5%	8%	92%
Jefferson	659	240	36%	2.36	54%	11%	14%	41%
John Wamer	700	639	91%	1.10	15%	3%	8%	93%
Lange	715	676	95%	2.41	56%	8%	16%	94%
Oakland	675	554	82%	2.48	56%	10%	13%	94%
Smithton	704	648	92%	1.66	28%	8%	11%	102%
West	777	695	89%	1.92	48%	8%	14%	100%
<b>MIDDLE SUBTOTAL</b>	<b>4,936</b>	<b>4,061</b>	<b>82%</b>	<b>1.90</b>	<b>41%</b>	<b>7%</b>	<b>12%</b>	<b>88%</b>
Battle	1,800	1,752	97%	2.43	47%	10%	12%	102%
Hickman	2,125	2,021	95%	1.78	31%	5%	11%	101%
Rock Bridge	1,800	1,891	105%	1.41	19%	4%	7%	113%
<b>HIGH SUBTOTAL</b>	<b>5,725</b>	<b>5,664</b>	<b>99%</b>	<b>1.86</b>	<b>33%</b>	<b>6%</b>	<b>11%</b>	<b>105%</b>
<b>TOTAL</b>	<b>21,539</b>	<b>18,032</b>	<b>84%</b>	<b>1.91</b>	<b>41%</b>	<b>9%</b>	<b>12%</b>	<b>89%</b>

## Students Moved

ES	2,275	27%
MS	910	22%
HS	422	7%

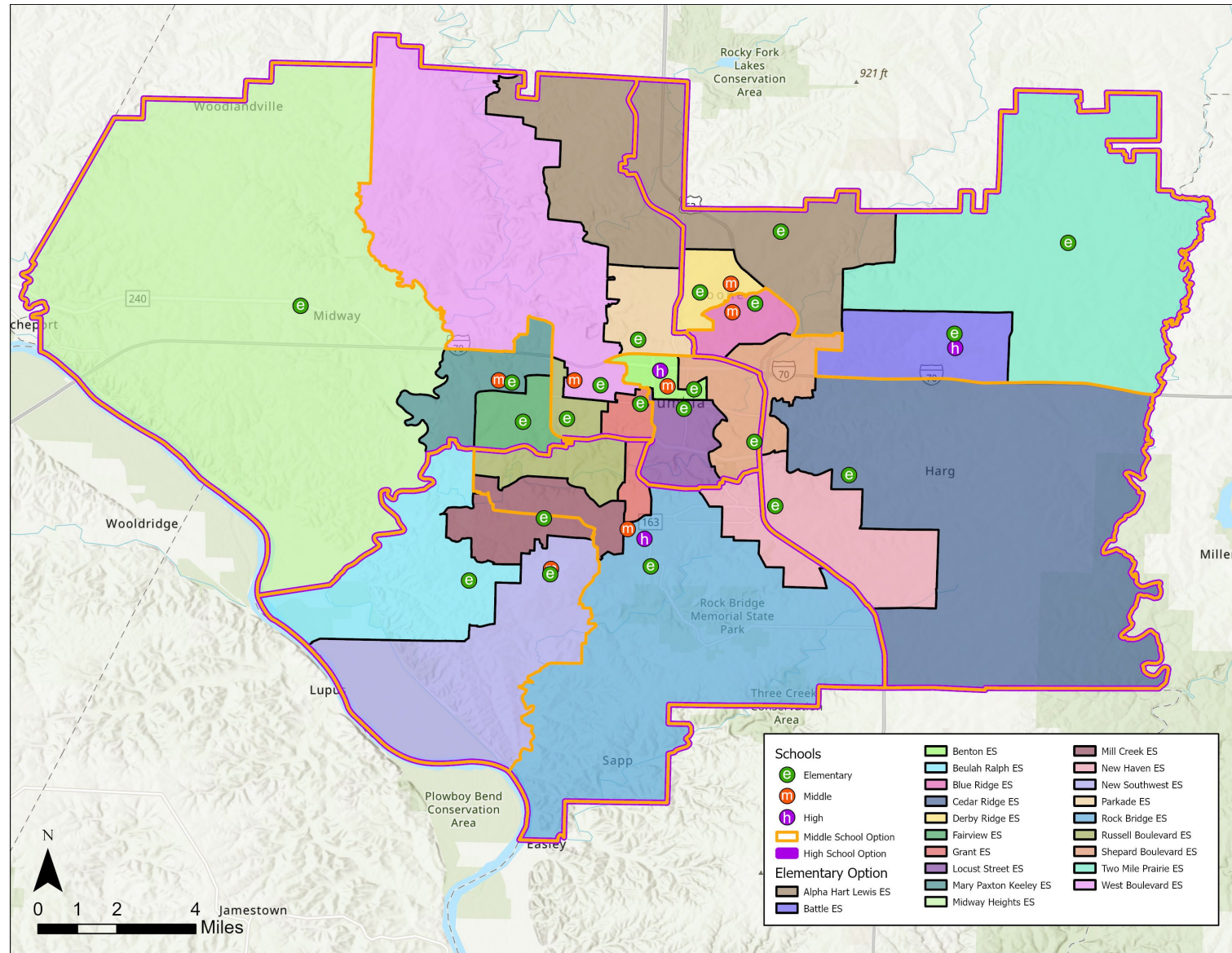


A group of five diverse children, three boys and two girls, are running joyfully across a grassy field. They are all wearing backpacks, suggesting they are on their way to school. The background shows a large, multi-story school building with many windows. The overall atmosphere is bright and energetic.

# FINAL OPTIONS

# Option A-1

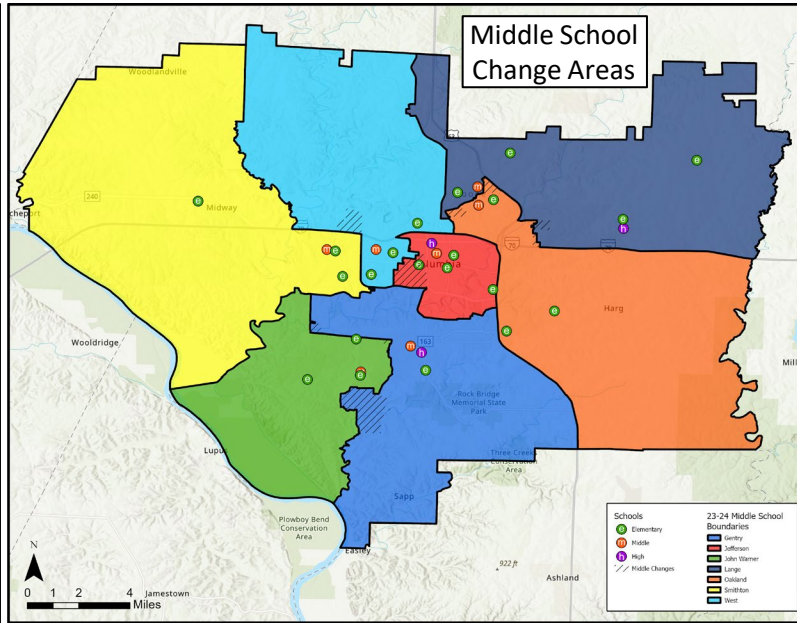
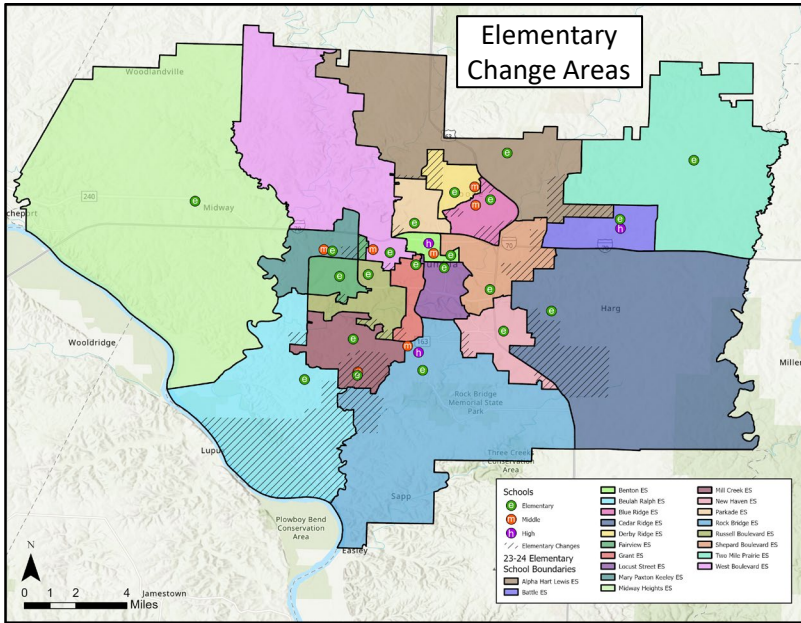
## End state map & metrics (phase 3)



Attendance Area	2025-26 Capacity	K-12 Live-In Enrollment	Live-In Utilization	Diversity Index	Low SES %	EL %	IEP %	2028-29 Utilization
Alpha Hart Lewis ES	650	528	81%	2.27	56%	15%	14%	77%
Battle ES	650	488	75%	2.60	66%	10%	14%	77%
Benton ES	260	158	61%	2.77	72%	13%	17%	68%
Beulah Ralph ES	650	522	80%	1.26	17%	5%	9%	68%
Blue Ridge ES	500	346	69%	2.94	69%	20%	11%	77%
Cedar Ridge ES	650	533	82%	1.79	44%	6%	8%	85%
Derby Ridge ES	556	373	67%	2.77	58%	13%	17%	74%
Fairview ES	550	438	80%	1.28	23%	7%	9%	79%
Grant ES	375	292	78%	1.86	37%	11%	9%	82%
Locust Street ES	340	134	39%	2.26	73%	28%	9%	41%
Mary Paxton Keeley ES	723	602	83%	1.97	31%	13%	8%	81%
Midway Heights ES	295	253	86%	1.50	27%	4%	9%	83%
Mill Creek ES	673	531	79%	1.30	21%	7%	8%	78%
New Haven ES	293	232	79%	2.36	55%	23%	11%	79%
Parkade ES	478	380	79%	2.09	49%	13%	10%	77%
Rock Bridge ES	650	470	72%	2.06	44%	10%	11%	71%
Russell Boulevard ES	650	527	81%	1.35	24%	6%	6%	86%
Shepard Boulevard ES	652	502	77%	2.57	65%	16%	13%	78%
Two Mile Prairie ES	195	173	89%	1.99	32%	3%	9%	89%
West Boulevard ES	438	367	84%	2.30	59%	13%	11%	86%
New Southwest ES	650	458	70%	1.06	15%	10%	7%	66%
<b>ELEMENTARY SUBTOTAL</b>	<b>10,878</b>	<b>8,307</b>	<b>76%</b>	<b>1.95</b>	<b>43%</b>	<b>11%</b>	<b>10%</b>	<b>76%</b>
Gentry	706	662	94%	1.68	32%	5%	8%	99%
Jefferson	659	237	36%	2.35	55%	11%	12%	41%
John Warner	700	669	96%	1.10	15%	3%	8%	98%
Lange	715	607	85%	2.52	58%	9%	16%	87%
Oakland	675	568	84%	2.45	54%	10%	13%	97%
Smithton	704	595	85%	1.66	28%	9%	10%	95%
West	777	723	93%	1.94	50%	7%	15%	99%
<b>MIDDLE SUBTOTAL</b>	<b>4,936</b>	<b>4,061</b>	<b>82%</b>	<b>1.90</b>	<b>41%</b>	<b>7%</b>	<b>12%</b>	<b>88%</b>
Battle	1,800	1,554	86%	2.49	47%	9%	12%	87%
Hickman	2,125	2,081	98%	1.83	34%	6%	12%	107%
Rock Bridge	1,800	2,029	113%	1.40	18%	3%	7%	120%
<b>HIGH SUBTOTAL</b>	<b>5,725</b>	<b>5,664</b>	<b>99%</b>	<b>1.86</b>	<b>33%</b>	<b>6%</b>	<b>11%</b>	<b>105%</b>
<b>TOTAL</b>	<b>21,539</b>	<b>18,032</b>	<b>84%</b>	<b>1.91</b>	<b>41%</b>	<b>9%</b>	<b>12%</b>	<b>89%</b>

# Option A-1

No changes to high school attendance areas.



Elementary to Middle Feeders	Gentry	Jefferson	John Warner	Lange	Oakland	Smithton	West
Alpha Hart Lewis ES				47%			53%
Battle ES				100%			
Benton ES		100%					
Beulah Ralph ES			100%				
Blue Ridge ES					100%		
Cedar Ridge ES					100%		
Derby Ridge ES				100%			
Fairview ES						100%	
Grant ES	38%						62%
Locust Street ES		100%					
Mary Paxton Keeley ES						100%	
Midway Heights ES						100%	
Mill Creek ES	53%		47%				
New Haven ES	61%				39%		
Parkade ES							100%
Rock Bridge ES	100%						
Russell Boulevard ES	54%						46%
Shepard Boulevard ES		37%			63%		
Two Mile Prairie ES				100%			
West Boulevard ES							100%
New Southwest ES			100%				

Students Moved		
ES	1,230	15%
MS	375	9%
HS	0	0%

Attend Closest School		
ES	4,420	53%
MS	2,543	63%
HS	4,883	86%

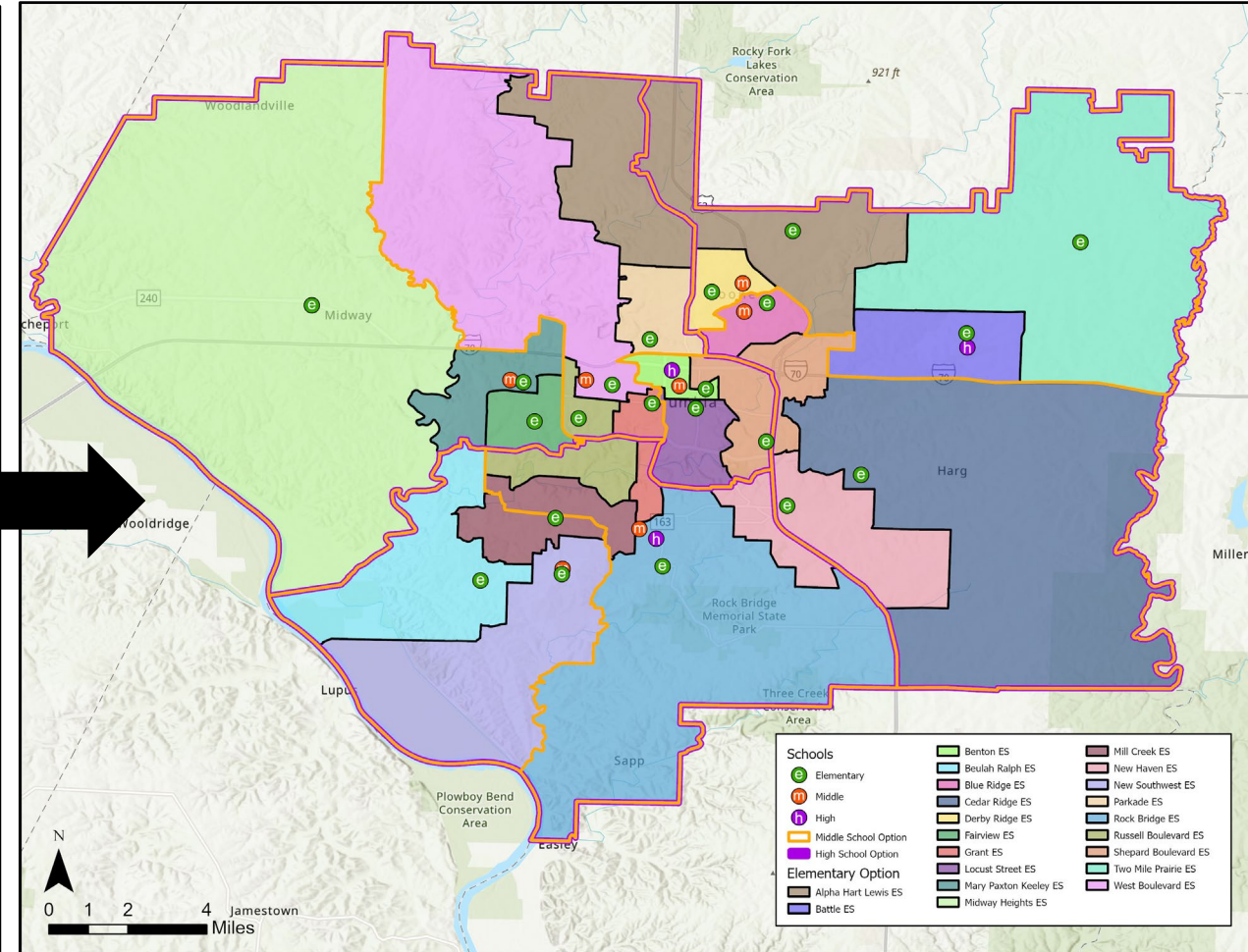
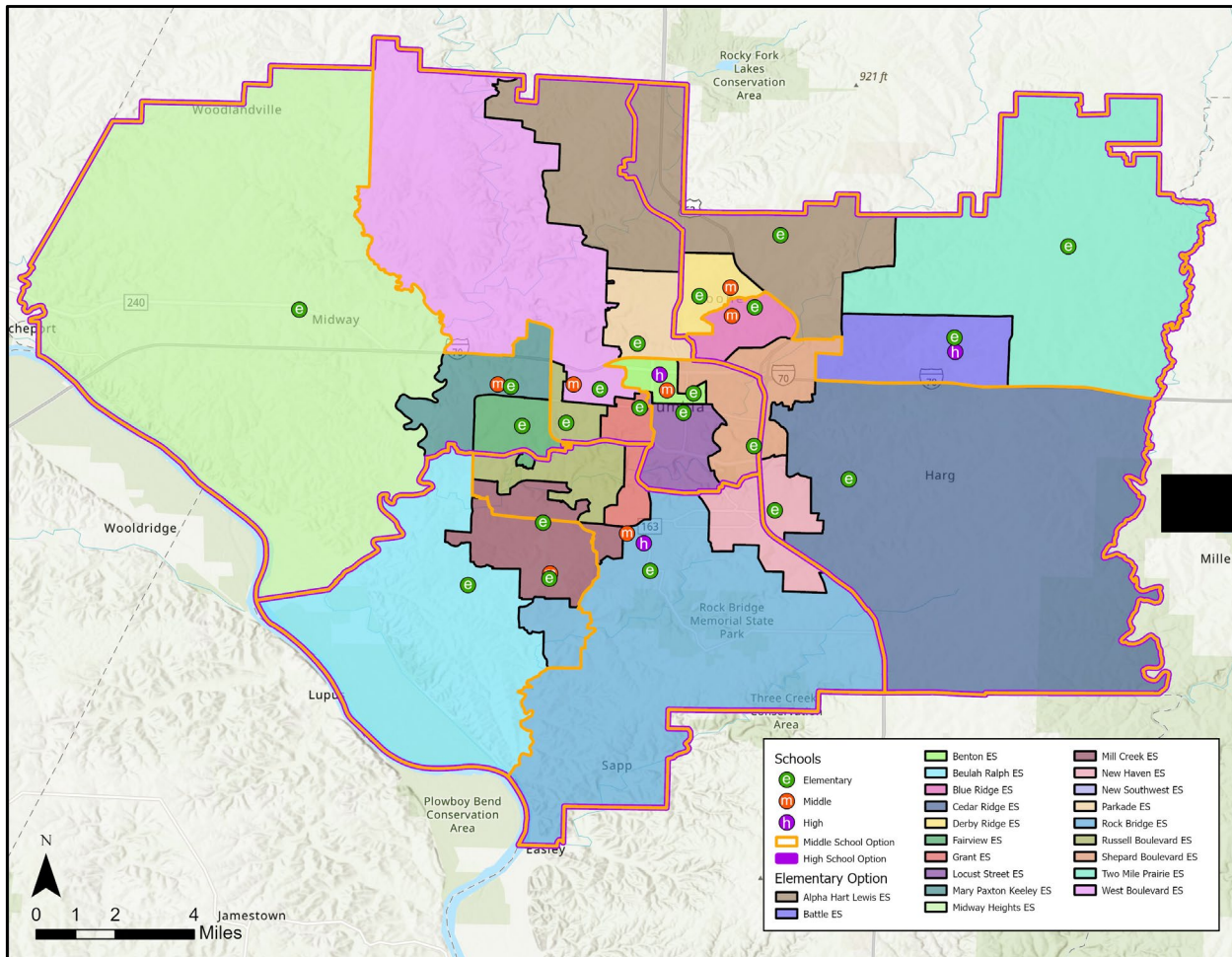
Middle to High Feeders	Battle	Hickman	Rock Bridge
Gentry			100%
Jefferson (boundary only)		100%	
John Warner			100%
Lange	100%		
Oakland	100%		
Smithton		100%	
West		100%	



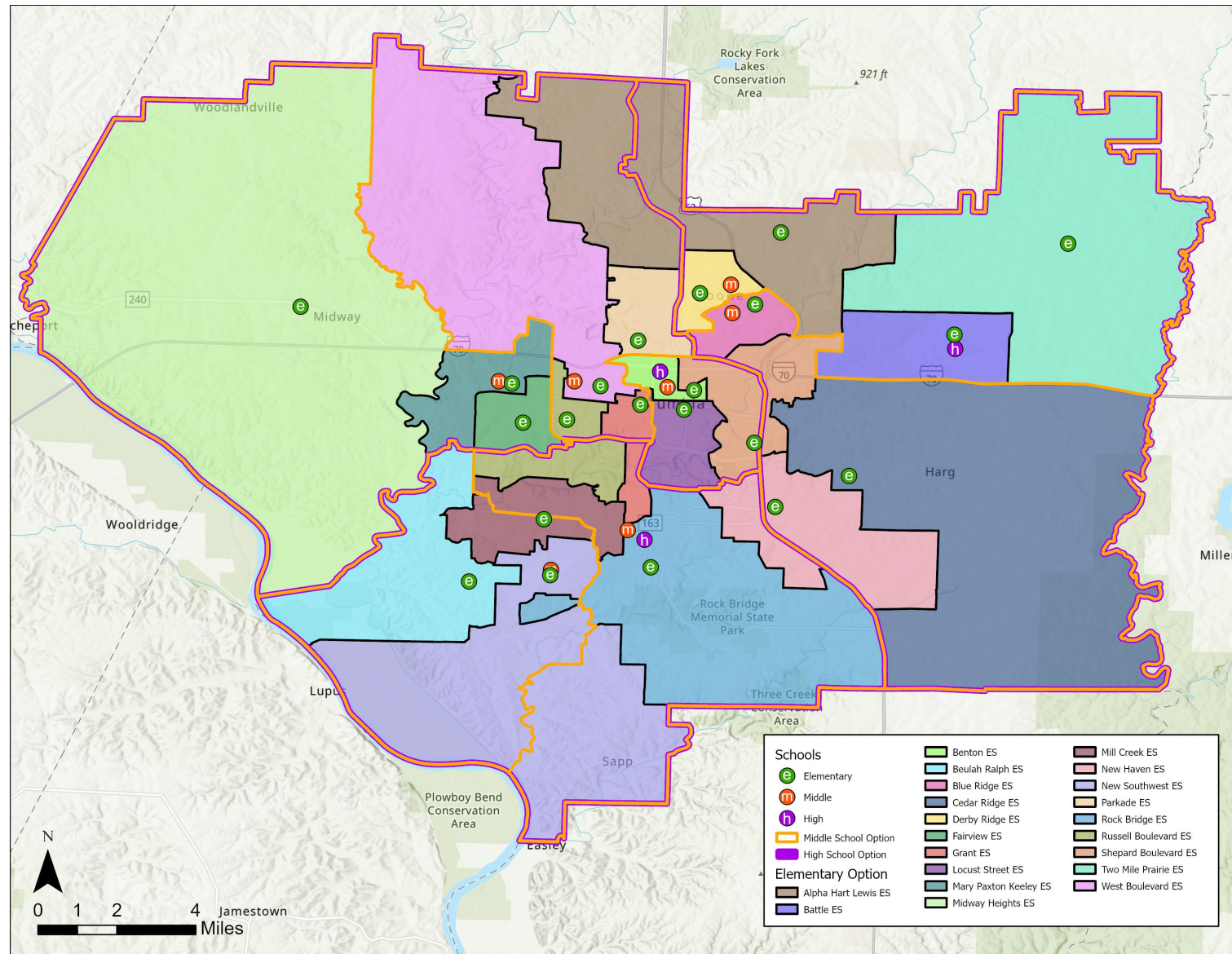
# Option A-1

## Phase 2 Attendance Areas (2025-26)

## Phase 3 Attendance Areas (2026-27)



# Option A-2

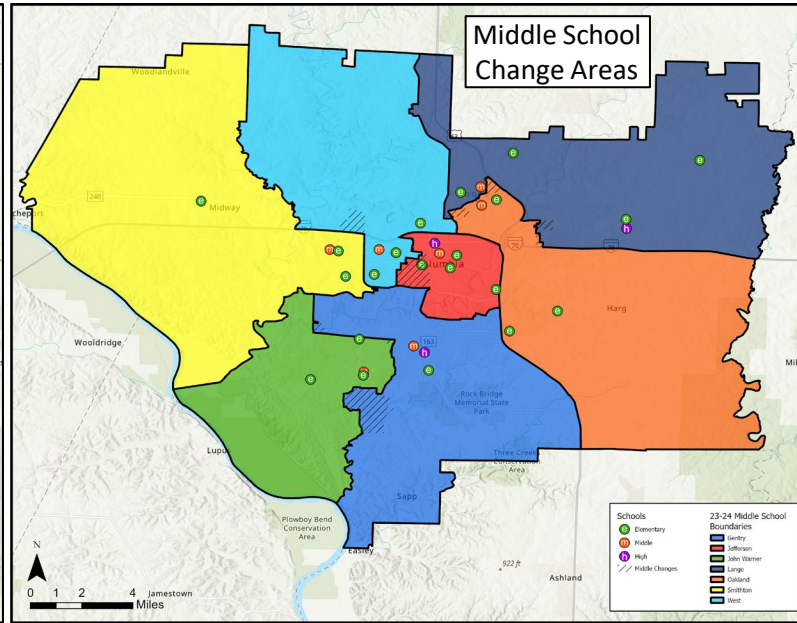
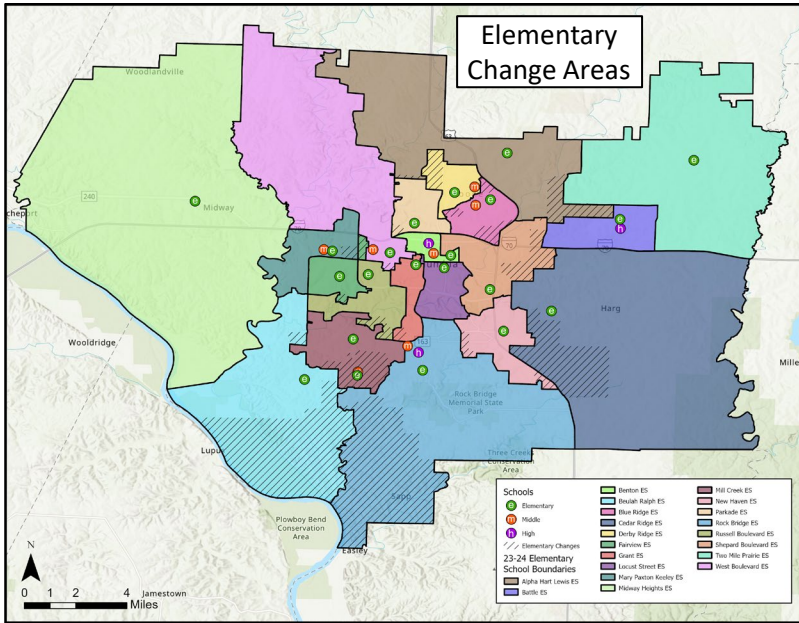


## End state map & metrics (phase 3)

Attendance Area	2025-26 Capacity	K-12 Live-In Enrollment	Live-In Utilization	Diversity Index	Low SES %	EL %	IEP %	2028-29 Utilization
Alpha Hart Lewis ES	650	528	81%	2.27	56%	15%	14%	77%
Battle ES	650	488	75%	2.60	66%	10%	14%	77%
Benton ES	260	158	61%	2.77	72%	13%	17%	68%
Beulah Ralph ES	650	522	80%	1.26	17%	5%	9%	68%
Blue Ridge ES	500	346	69%	2.94	69%	20%	11%	77%
Cedar Ridge ES	650	533	82%	1.79	44%	6%	8%	85%
Derby Ridge ES	556	373	67%	2.77	58%	13%	17%	74%
Fairview ES	550	438	80%	1.28	23%	7%	9%	79%
Grant ES	375	292	78%	1.86	37%	11%	9%	82%
Locust Street ES	340	134	39%	2.26	73%	28%	9%	41%
Mary Paxton Keeley ES	723	602	83%	1.97	31%	13%	8%	81%
Midway Heights ES	295	253	86%	1.50	27%	4%	9%	83%
Mill Creek ES	673	487	72%	1.32	24%	8%	8%	72%
New Haven ES	293	232	79%	2.36	55%	23%	11%	79%
Parkade ES	478	380	79%	2.09	49%	13%	10%	77%
Rock Bridge ES	650	529	81%	1.94	42%	10%	11%	80%
Russell Boulevard ES	650	506	78%	1.36	24%	6%	7%	83%
Shepard Boulevard ES	652	502	77%	2.57	65%	16%	13%	78%
Two Mile Prairie ES	195	173	89%	1.99	32%	3%	9%	89%
West Boulevard ES	438	367	84%	2.30	59%	13%	11%	86%
New Southwest ES	650	464	71%	1.06	12%	9%	6%	67%
<b>ELEMENTARY SUBTOTAL</b>	<b>10,878</b>	<b>8,307</b>	<b>76%</b>	<b>1.95</b>	<b>43%</b>	<b>11%</b>	<b>10%</b>	<b>76%</b>
Gentry	706	662	94%	1.68	32%	5%	8%	99%
Jefferson	659	237	36%	2.35	55%	11%	12%	41%
John Warner	700	669	96%	1.10	15%	3%	8%	98%
Lange	715	607	85%	2.52	58%	9%	16%	87%
Oakland	675	568	84%	2.45	54%	10%	13%	97%
Smithton	704	595	85%	1.66	28%	9%	10%	95%
West	777	723	93%	1.94	50%	7%	15%	99%
<b>MIDDLE SUBTOTAL</b>	<b>4,936</b>	<b>4,061</b>	<b>82%</b>	<b>1.90</b>	<b>41%</b>	<b>7%</b>	<b>12%</b>	<b>88%</b>
Battle	1,800	1,554	86%	2.49	47%	9%	12%	87%
Hickman	2,125	2,081	98%	1.83	34%	6%	12%	107%
Rock Bridge	1,800	2,029	113%	1.40	18%	3%	7%	120%
<b>HIGH SUBTOTAL</b>	<b>5,725</b>	<b>5,664</b>	<b>99%</b>	<b>1.86</b>	<b>33%</b>	<b>6%</b>	<b>11%</b>	<b>105%</b>
<b>TOTAL</b>	<b>21,539</b>	<b>18,032</b>	<b>84%</b>	<b>1.91</b>	<b>41%</b>	<b>9%</b>	<b>12%</b>	<b>89%</b>

# Option A-2

No changes to high school attendance areas.



Elementary to Middle Feeders	Gentry	Jefferson	John Warner	Lange	Oakland	Smithton	West
Alpha Hart Lewis ES				47%			53%
Battle ES				100%			
Benton ES		100%					
Beulah Ralph ES			100%				
Blue Ridge ES					100%		
Cedar Ridge ES					100%		
Derby Ridge ES				100%			
Fairview ES						100%	
Grant ES	38%						62%
Locust Street ES		100%					
Mary Paxton Keeley ES						100%	
Midway Heights ES						100%	
Mill Creek ES	62%		38%				
New Haven ES	61%				39%		
Parkade ES							100%
Rock Bridge ES	81%		19%				
Russell Boulevard ES	52%						48%
Shepard Boulevard ES		37%			63%		
Two Mile Prairie ES				100%			
West Boulevard ES							100%
New Southwest ES	8%		92%				

Middle to High Feeders	Battle	Hickman	Rock Bridge
Gentry			100%
Jefferson (boundary only)		100%	
John Warner			100%
Lange	100%		
Oakland	100%		
Smithton		100%	
West		100%	

Students Moved			
ES	1,257	15%	
MS	375	9%	
HS	0	0%	

Attend Closest School		
ES	4,318	52%
MS	2,543	63%
HS	4,883	86%

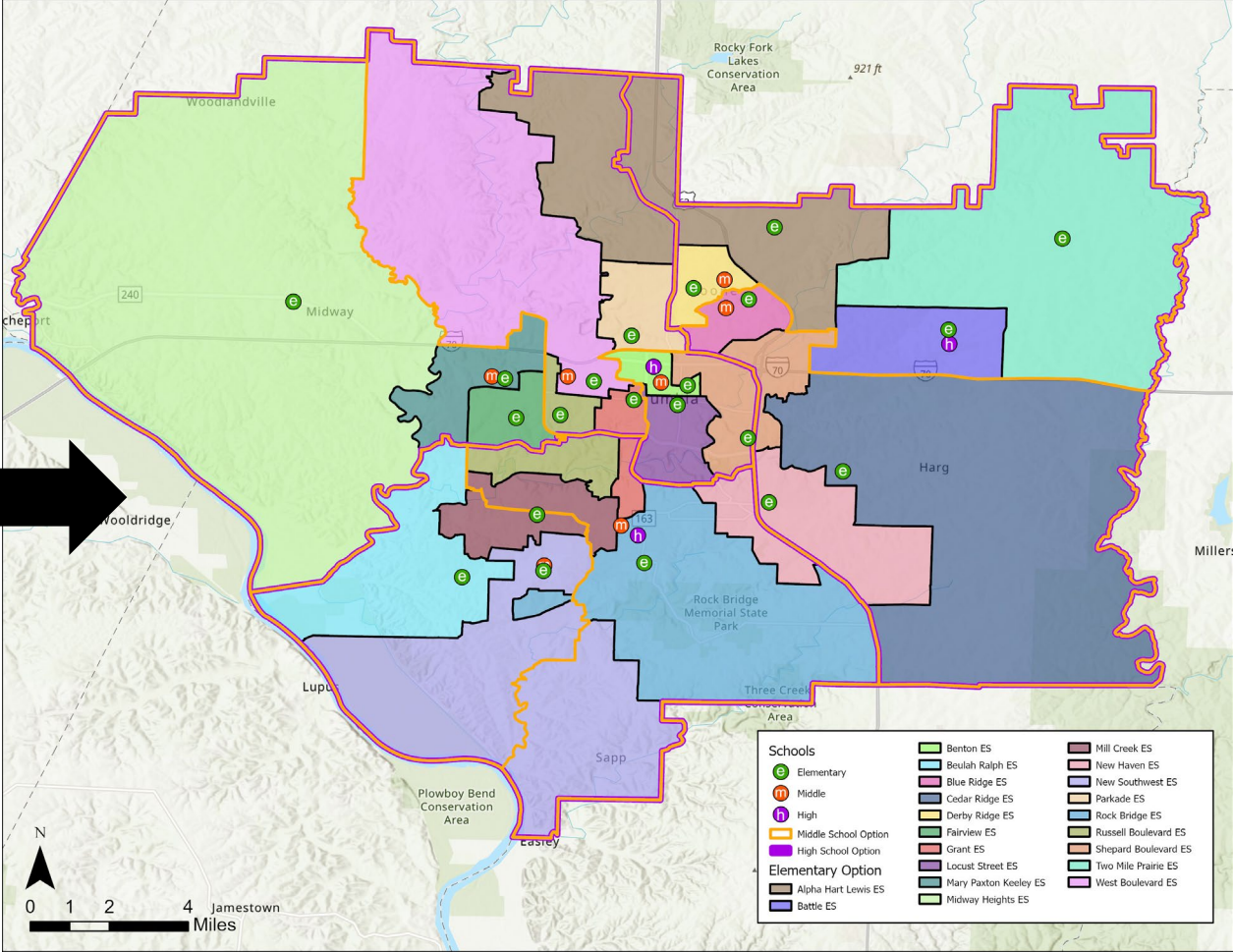
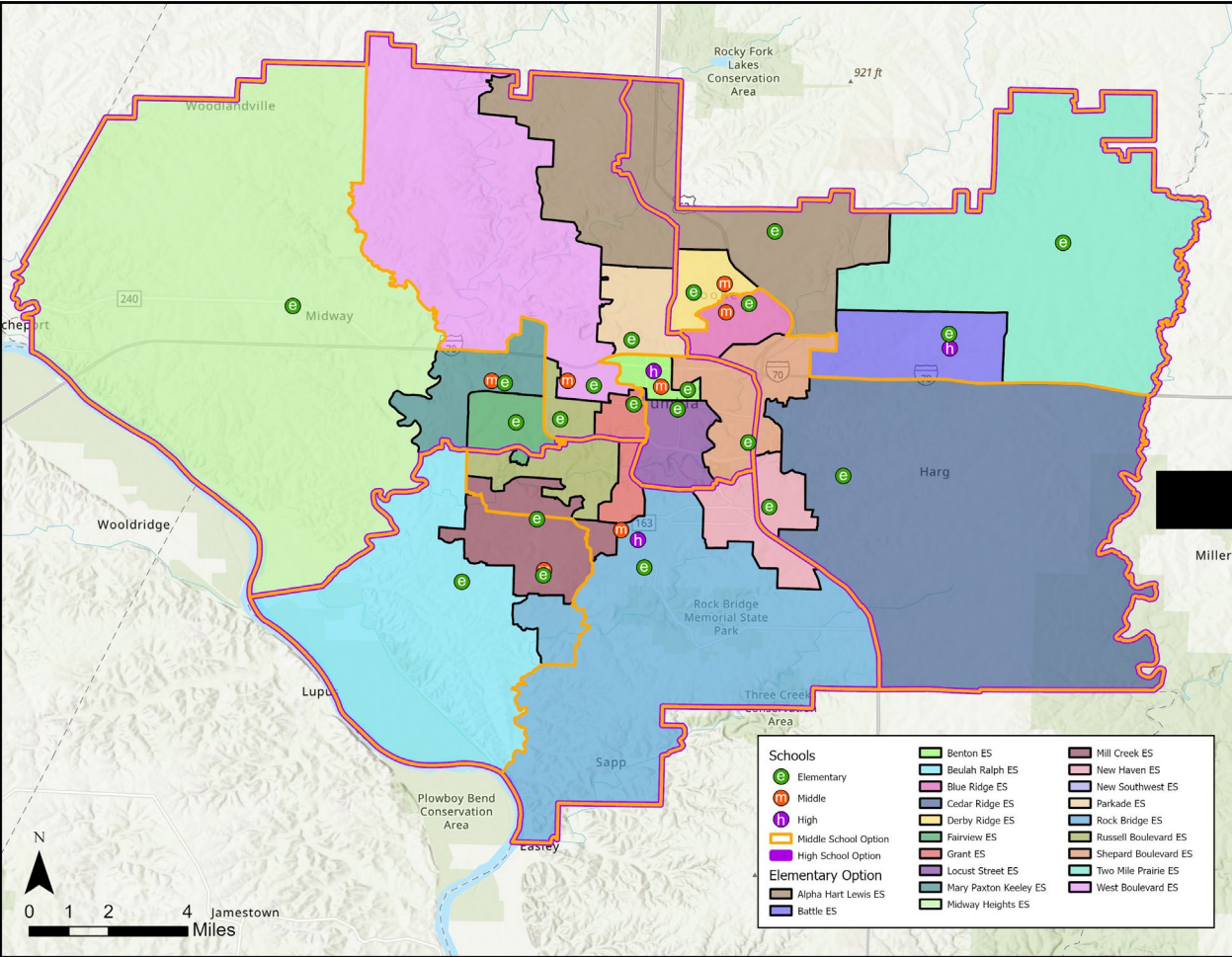




# Option A-2

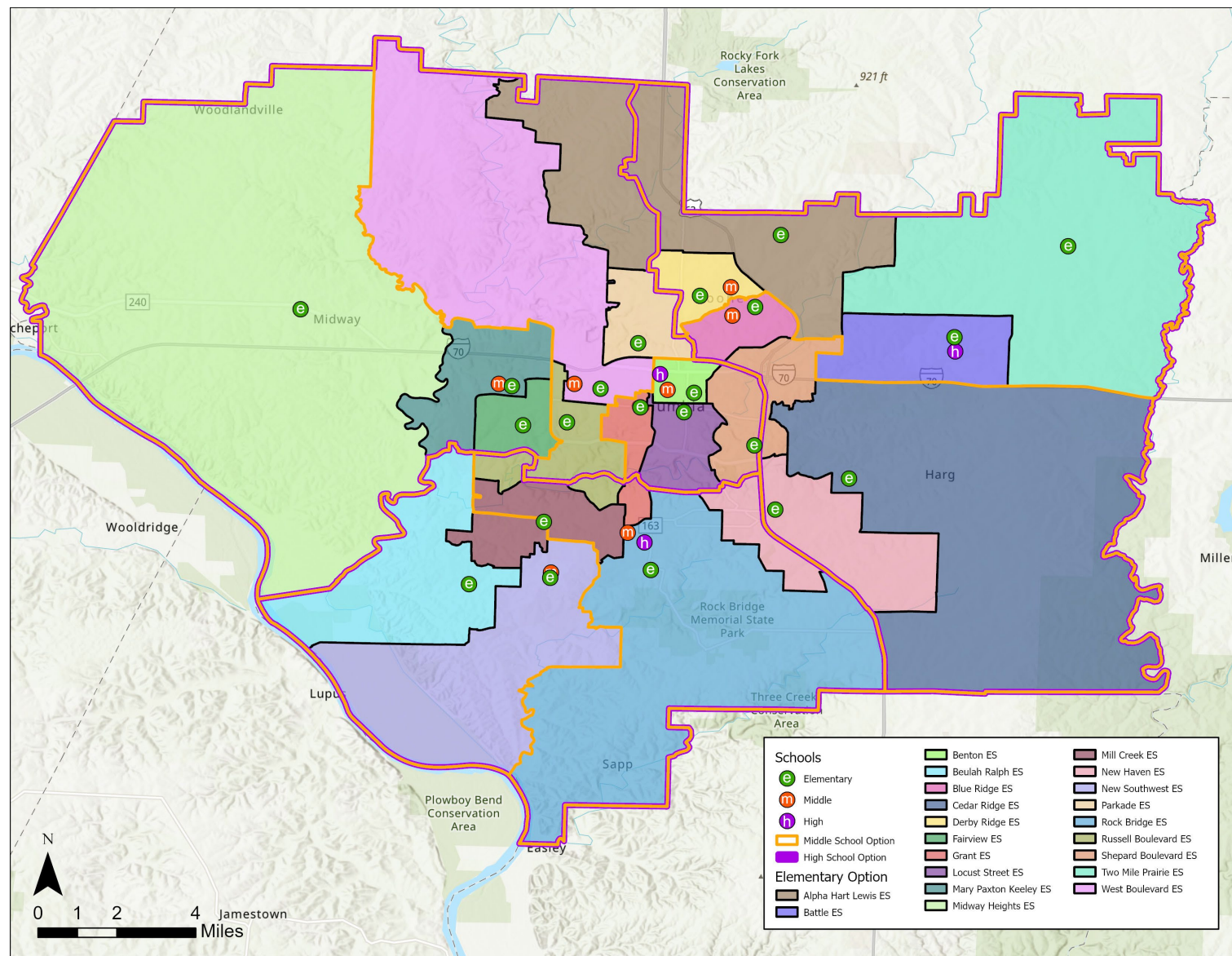
## Phase 2 Attendance Areas (2025-26)

## Phase 3 Attendance Areas (2026-27)



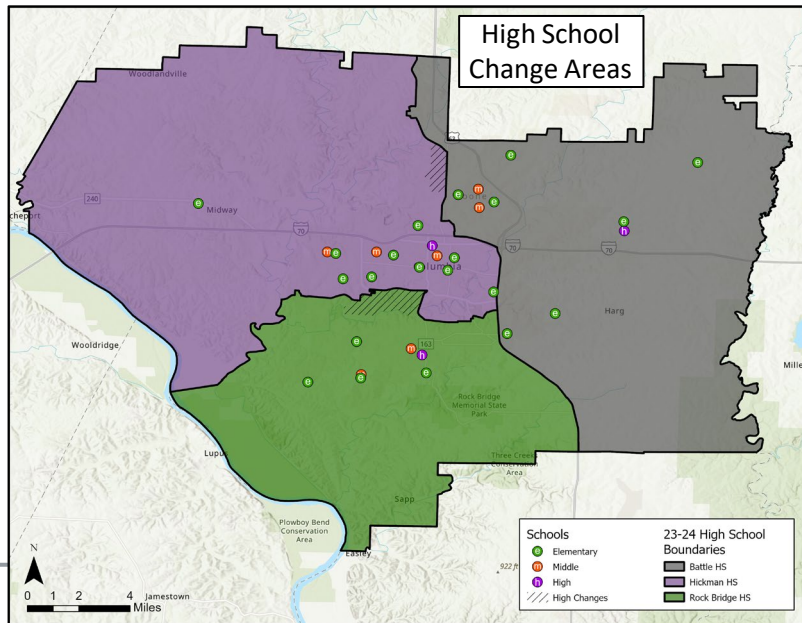
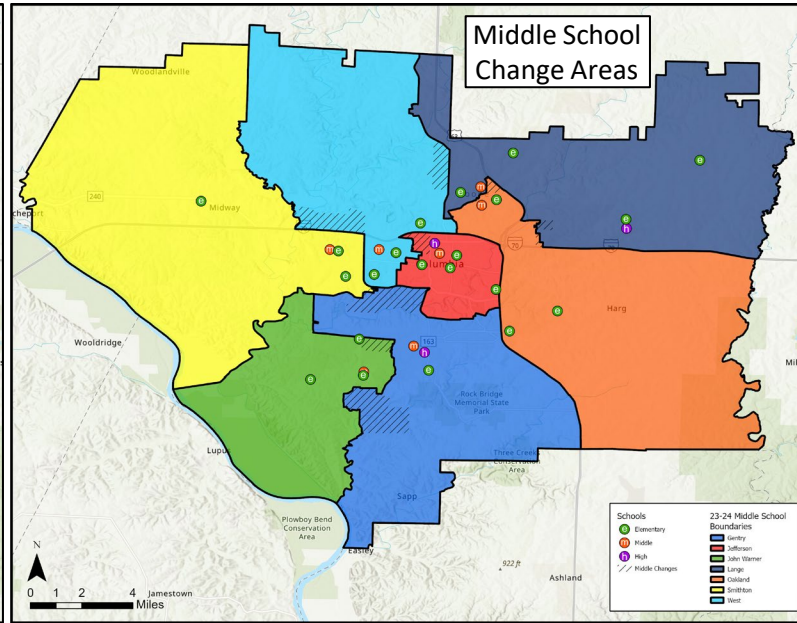
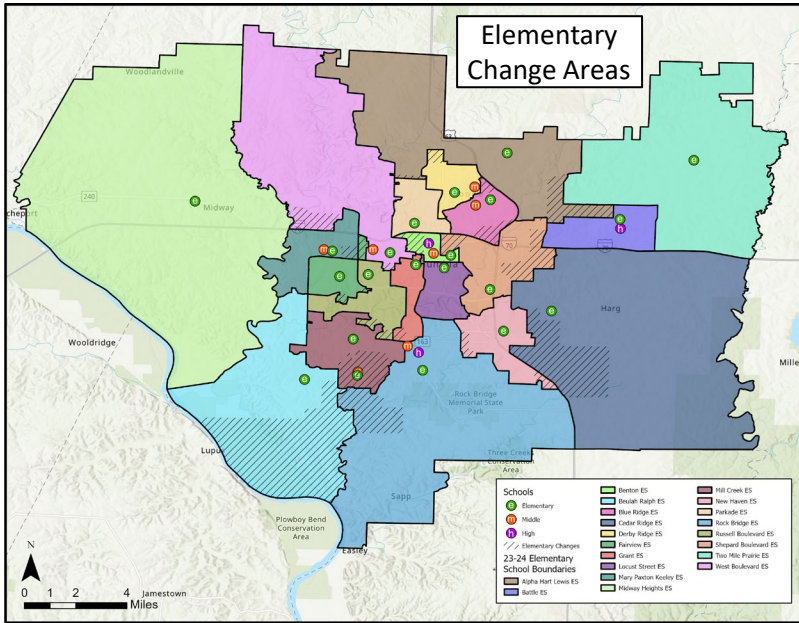
# Option B-1

## End state map & metrics (phase 3)



Attendance Area	2025-26 Capacity	K-12 Live-In Enrollment	Live-In Utilization	Diversity Index	Low SES %	EL %	IEP %	2028-29 Utilization
Alpha Hart Lewis ES	650	461	71%	2.30	55%	15%	13%	65%
Battle ES	650	488	75%	2.60	66%	10%	14%	77%
Benton ES	260	117	45%	2.50	76%	17%	17%	50%
Beulah Ralph ES	650	522	80%	1.26	17%	5%	9%	68%
Blue Ridge ES	500	360	72%	2.94	68%	19%	11%	80%
Cedar Ridge ES	650	533	82%	1.79	44%	6%	8%	85%
Derby Ridge ES	556	426	77%	2.64	58%	14%	17%	86%
Fairview ES	550	437	79%	1.28	23%	7%	9%	78%
Grant ES	375	292	78%	1.86	37%	11%	9%	82%
Locust Street ES	340	134	39%	2.26	73%	28%	9%	41%
Mary Paxton Keeley ES	723	629	87%	2.00	33%	13%	8%	84%
Midway Heights ES	295	253	86%	1.50	27%	4%	9%	83%
Mill Creek ES	673	531	79%	1.30	21%	7%	8%	78%
New Haven ES	293	232	79%	2.36	55%	23%	11%	79%
Parkade ES	478	431	90%	2.08	52%	15%	10%	87%
Rock Bridge ES	650	460	71%	2.08	45%	10%	11%	70%
Russell Boulevard ES	650	528	81%	1.35	24%	6%	6%	86%
Shepard Boulevard ES	652	480	74%	2.60	65%	16%	13%	75%
Two Mile Prairie ES	195	173	89%	1.99	32%	3%	9%	89%
West Boulevard ES	438	352	80%	2.43	56%	11%	12%	84%
New Southwest ES	650	468	72%	1.06	15%	10%	7%	67%
<b>ELEMENTARY SUBTOTAL</b>	<b>10,878</b>	<b>8,307</b>	<b>76%</b>	<b>1.95</b>	<b>43%</b>	<b>11%</b>	<b>10%</b>	<b>76%</b>
Gentry	706	615	87%	1.73	33%	4%	9%	92%
Jefferson	659	303	46%	2.06	44%	9%	10%	50%
John Warner	700	658	94%	1.09	15%	3%	8%	96%
Lange	715	652	91%	2.48	59%	9%	16%	90%
Oakland	675	576	85%	2.45	55%	10%	13%	99%
Smithton	704	603	86%	1.67	29%	9%	10%	96%
West	777	654	84%	1.94	50%	8%	16%	94%
<b>MIDDLE SUBTOTAL</b>	<b>4,936</b>	<b>4,061</b>	<b>82%</b>	<b>1.90</b>	<b>41%</b>	<b>7%</b>	<b>12%</b>	<b>88%</b>
Battle	1,800	1,602	89%	2.48	47%	9%	12%	91%
Hickman	2,125	2,115	100%	1.80	32%	6%	12%	108%
Rock Bridge	1,800	1,947	108%	1.42	19%	3%	7%	116%
<b>HIGH SUBTOTAL</b>	<b>5,725</b>	<b>5,664</b>	<b>99%</b>	<b>1.86</b>	<b>33%</b>	<b>6%</b>	<b>11%</b>	<b>105%</b>
<b>TOTAL</b>	<b>21,539</b>	<b>18,032</b>	<b>84%</b>	<b>1.91</b>	<b>41%</b>	<b>9%</b>	<b>12%</b>	<b>89%</b>

# Option B-1



**Students Moved**

ES	1,219	15%
MS	437	11%
HS	130	2%

**Attend Closest School**

ES	4,549	55%
MS	2,617	64%
HS	4,797	85%

Elementary to Middle Feeders	Gentry	Jefferson	John Warner	Lange	Oakland	Smithton	West
Alpha Hart Lewis ES				54%			46%
Battle ES				100%			
Benton ES		100%					
Beulah Ralph ES			100%				
Blue Ridge ES					100%		
Cedar Ridge ES					100%		
Derby Ridge ES				100%			
Fairview ES						100%	
Grant ES	38%	62%					
Locust Street ES		100%					
Mary Paxton Keeley ES						100%	
Midway Heights ES						100%	
Mill Creek ES	62%		38%				
New Haven ES	61%				39%		
Parkade ES							100%
Rock Bridge ES	100%						
Russell Boulevard ES	32%						68%
Shepard Boulevard ES		34%			66%		
Two Mile Prairie ES				100%			
West Boulevard ES							100%
New Southwest ES			100%				

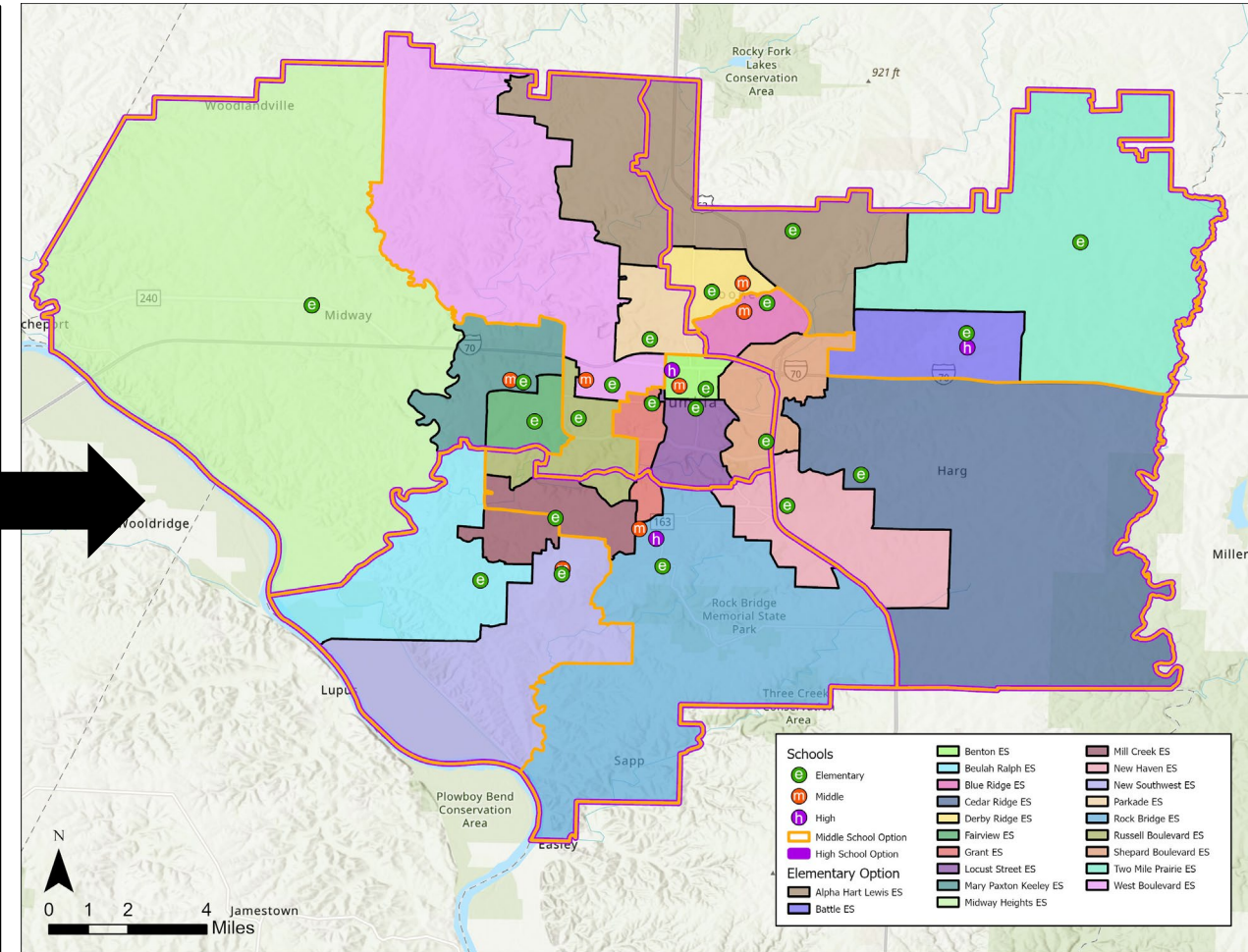
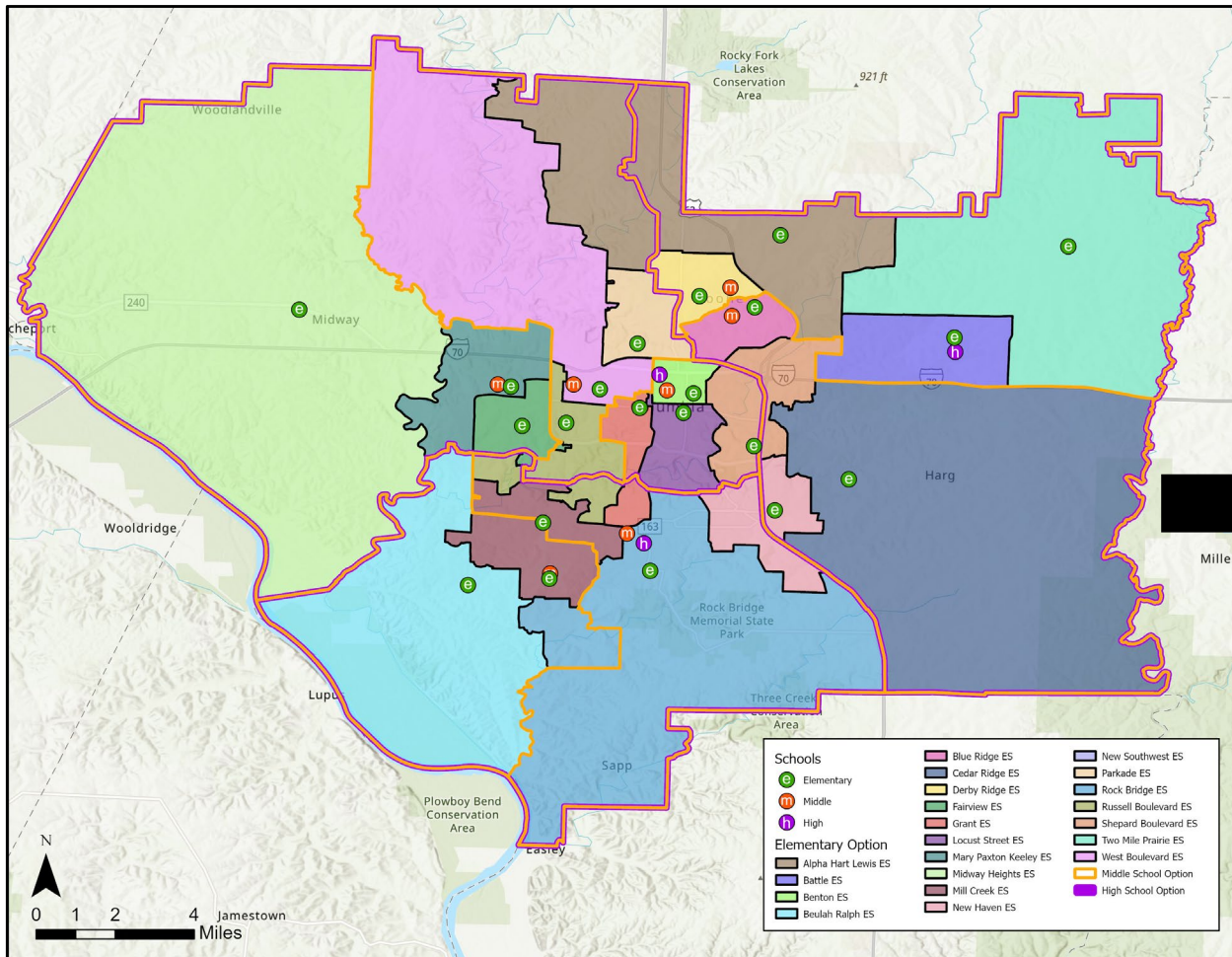
Middle to High Feeders	Battle	Hickman	Rock Bridge
Gentry			100%
Jefferson (boundary only)		100%	
John Warner			100%
Lange	100%		
Oakland	100%		
Smithton		100%	
West		100%	



# Option B-1

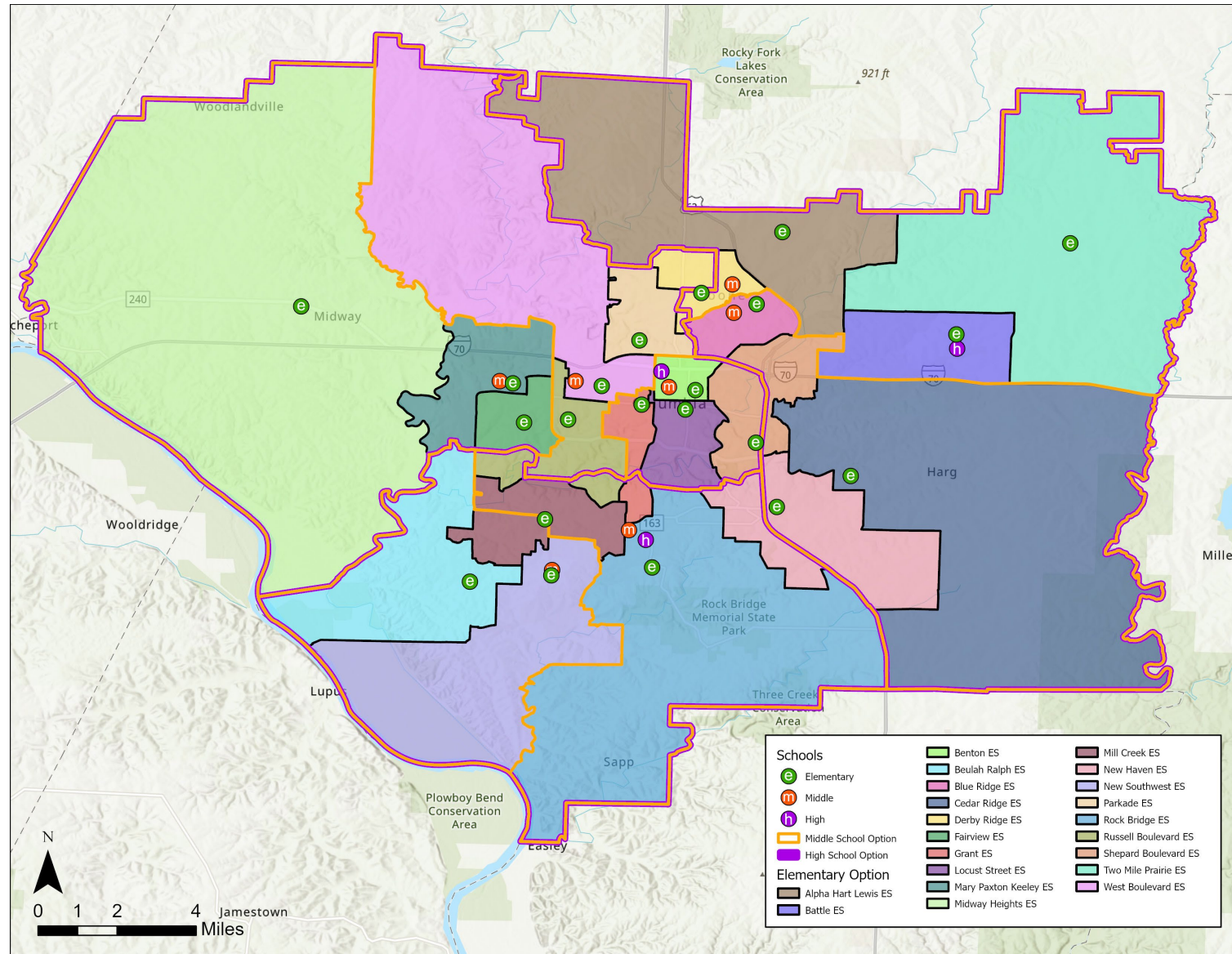
## Phase 2 Attendance Areas (2025-26)

## Phase 3 Attendance Areas (2026-27)



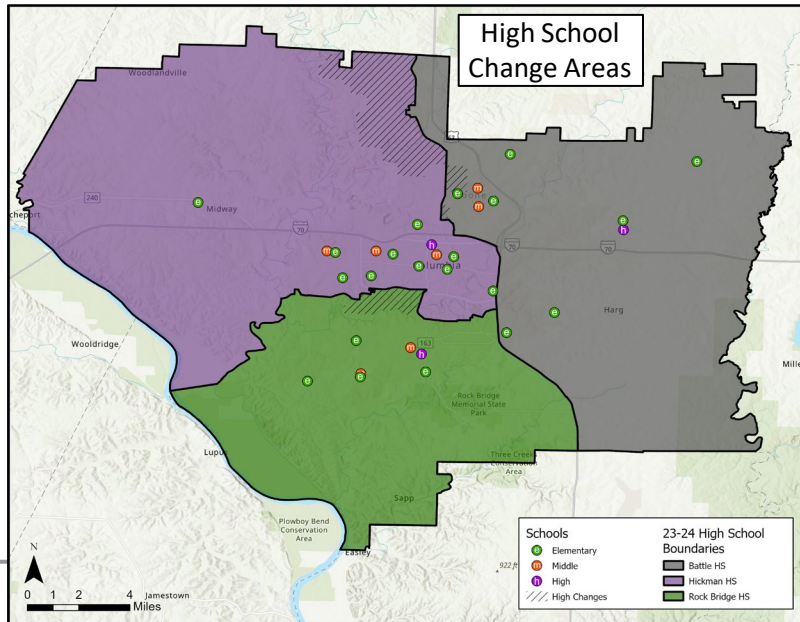
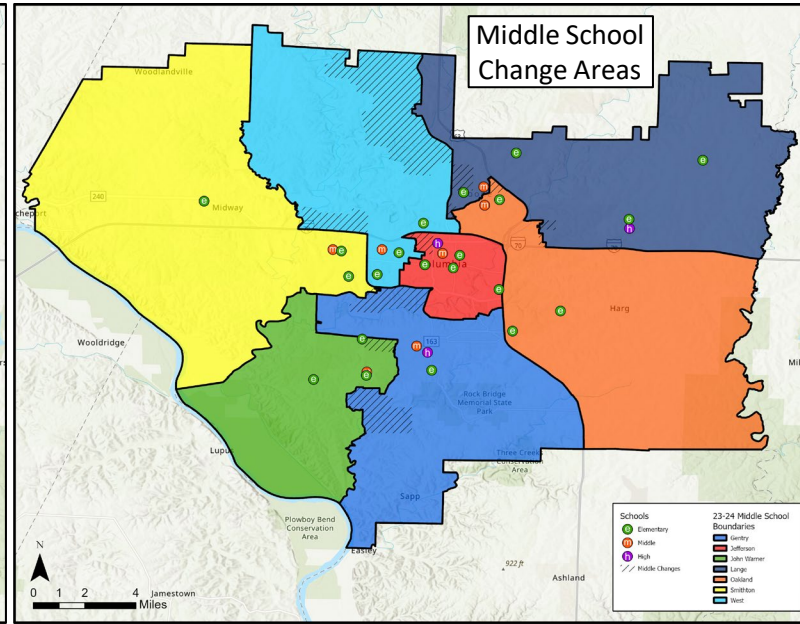
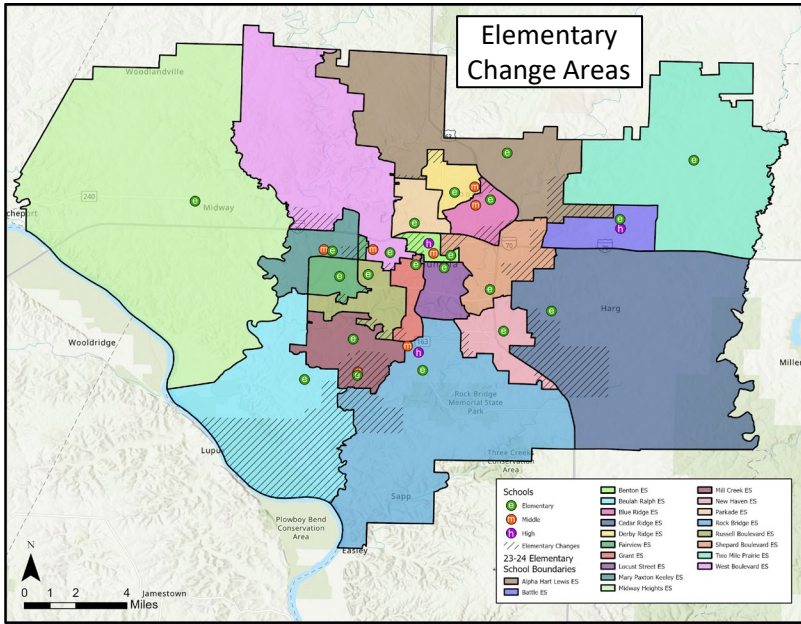
# Option B-2

## End state map & metrics (phase 3)



Attendance Area	2025-26 Capacity	K-12 Live-In Enrollment	Live-In Utilization	Diversity Index	Low SES %	EL %	IEP %	2028-29 Utilization
Alpha Hart Lewis ES	650	461	71%	2.30	55%	15%	13%	65%
Battle ES	650	488	75%	2.60	66%	10%	14%	77%
Benton ES	260	117	45%	2.50	76%	17%	17%	50%
Beulah Ralph ES	650	522	80%	1.26	17%	5%	9%	68%
Blue Ridge ES	500	360	72%	2.94	68%	19%	11%	80%
Cedar Ridge ES	650	533	82%	1.79	44%	6%	8%	85%
Derby Ridge ES	556	426	77%	2.64	58%	14%	17%	86%
Fairview ES	550	437	79%	1.28	23%	7%	9%	78%
Grant ES	375	292	78%	1.86	37%	11%	9%	82%
Locust Street ES	340	134	39%	2.26	73%	28%	9%	41%
Mary Paxton Keeley ES	723	629	87%	2.00	33%	13%	8%	84%
Midway Heights ES	295	253	86%	1.50	27%	4%	9%	83%
Mill Creek ES	673	531	79%	1.30	21%	7%	8%	78%
New Haven ES	293	232	79%	2.36	55%	23%	11%	79%
Parkade ES	478	431	90%	2.08	52%	15%	10%	87%
Rock Bridge ES	650	460	71%	2.08	45%	10%	11%	70%
Russell Boulevard ES	650	528	81%	1.35	24%	6%	6%	86%
Shepard Boulevard ES	652	480	74%	2.60	65%	16%	13%	75%
Two Mile Prairie ES	195	173	89%	1.99	32%	3%	9%	89%
West Boulevard ES	438	352	80%	2.43	56%	11%	12%	84%
New Southwest ES	650	468	72%	1.06	15%	10%	7%	67%
<b>ELEMENTARY SUBTOTAL</b>	<b>10,878</b>	<b>8,307</b>	<b>76%</b>	<b>1.95</b>	<b>43%</b>	<b>11%</b>	<b>10%</b>	<b>76%</b>
Gentry	706	615	87%	1.73	33%	4%	9%	92%
Jefferson	659	303	46%	2.06	44%	9%	10%	50%
John Warner	700	658	94%	1.09	15%	3%	8%	96%
Lange	715	599	84%	2.69	56%	8%	16%	85%
Oakland	675	576	85%	2.45	55%	10%	13%	99%
Smithton	704	603	86%	1.67	29%	9%	10%	96%
West	777	707	91%	1.79	54%	9%	16%	99%
<b>MIDDLE SUBTOTAL</b>	<b>4,936</b>	<b>4,061</b>	<b>82%</b>	<b>1.90</b>	<b>41%</b>	<b>7%</b>	<b>12%</b>	<b>88%</b>
Battle	1,800	1,567	87%	2.40	45%	9%	12%	88%
Hickman	2,125	2,150	101%	1.86	34%	6%	12%	110%
Rock Bridge	1,800	1,947	108%	1.42	19%	3%	7%	116%
<b>HIGH SUBTOTAL</b>	<b>5,725</b>	<b>5,664</b>	<b>99%</b>	<b>1.86</b>	<b>33%</b>	<b>6%</b>	<b>11%</b>	<b>105%</b>
<b>TOTAL</b>	<b>21,539</b>	<b>18,032</b>	<b>84%</b>	<b>1.91</b>	<b>41%</b>	<b>9%</b>	<b>12%</b>	<b>89%</b>

# Option B-2



**Students Moved**

ES	1,219	15%
MS	572	14%
HS	371	7%

Elementary to Middle Feeders	Gentry	Jefferson	John Warner	Lange	Oakland	Smithton	West
Alpha Hart Lewis ES				100%			
Battle ES				100%			
Benton ES		100%					
Beulah Ralph ES			100%				
Blue Ridge ES					100%		
Cedar Ridge ES					100%		
Derby Ridge ES				33%			67%
Fairview ES						100%	
Grant ES	38%	62%					
Locust Street ES		100%					
Mary Paxton Keeley ES						100%	
Midway Heights ES						100%	
Mill Creek ES	62%		38%				
New Haven ES	61%				39%		
Parkade ES							100%
Rock Bridge ES	100%						
Russell Boulevard ES	32%						68%
Shepard Boulevard ES		34%			66%		
Two Mile Prairie ES				100%			
West Boulevard ES							100%
New Southwest ES			100%				

**Attend Closest School**

ES	4,549	55%
MS	2,568	63%
HS	4,832	85%

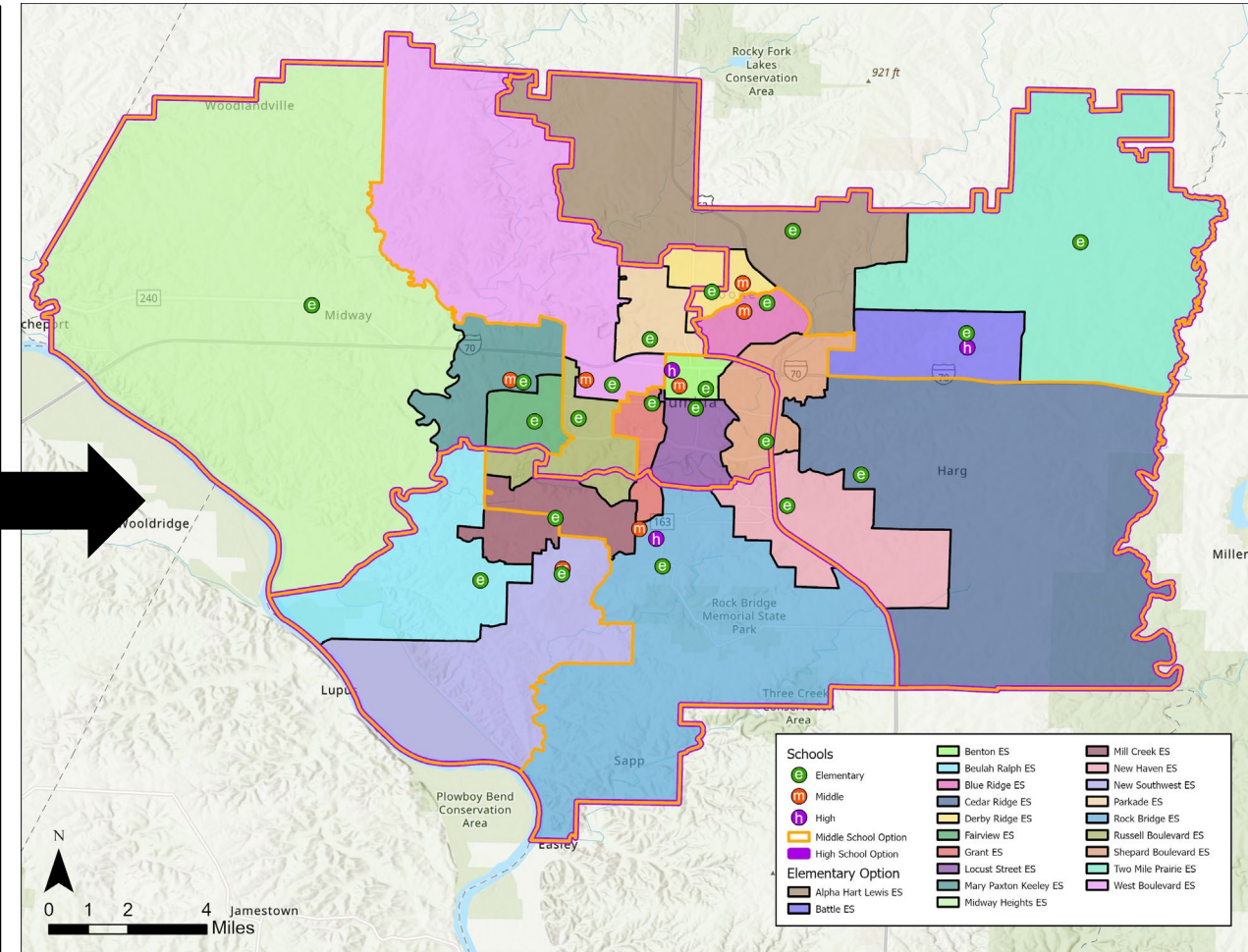
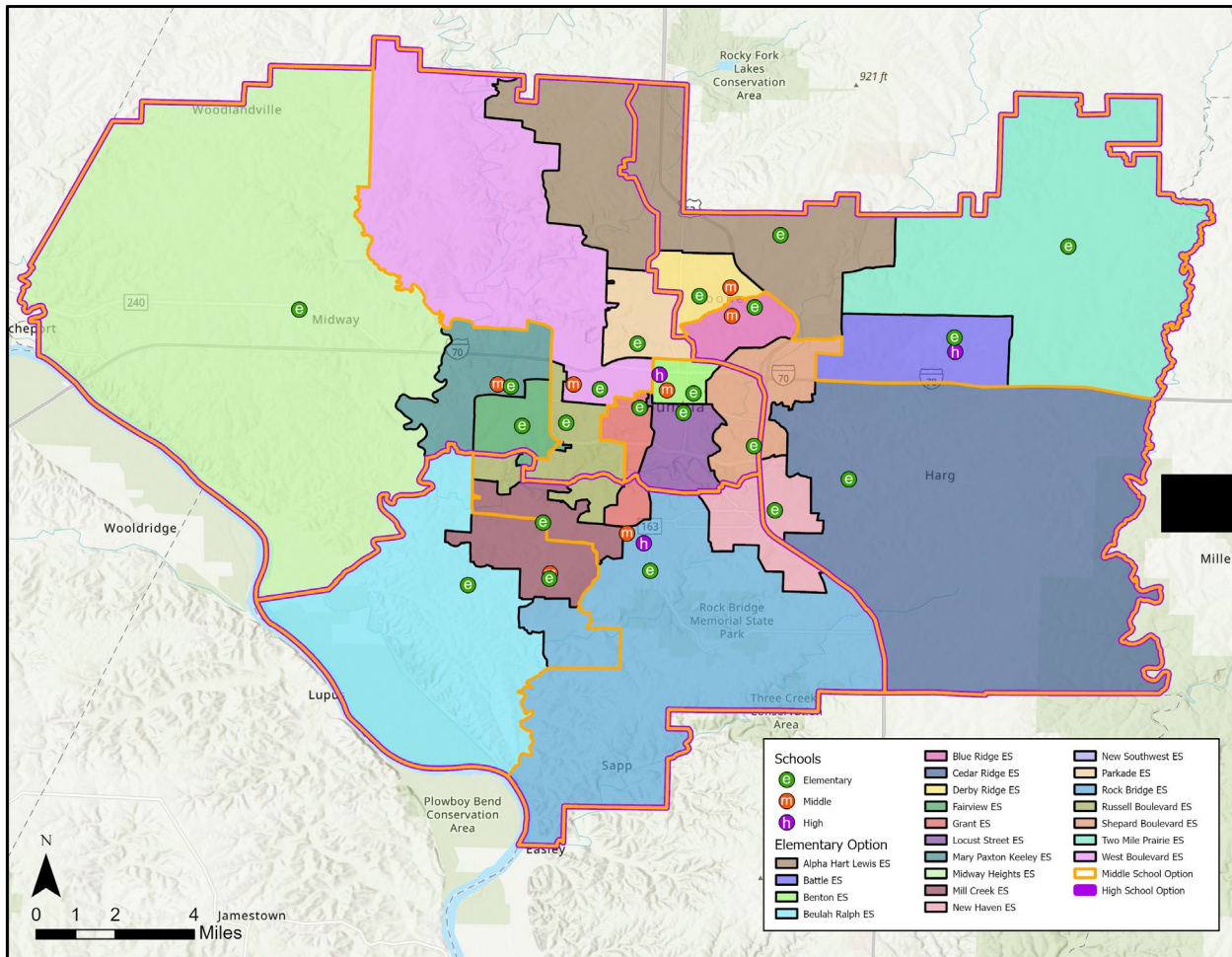
**Middle to High Feeders**

	Battle	Hickman	Rock Bridge
Gentry			100%
Jefferson (boundary only)		100%	
John Warner			100%
Lange	100%		
Oakland	100%		
Smithton		100%	
West		100%	

# Option B-2

## Phase 2 Attendance Areas (2025-26)

## Phase 3 Attendance Areas (2026-27)



# Next Steps: Providing Feedback

**OPEN HOUSES: June 11<sup>th</sup>**

**Aslin Administration Center | Board Room**

1818 W. Worley St.

11am-1pm, 5pm-7pm

**Online Survey will be open from June 5<sup>th</sup> to  
June 14<sup>th</sup> at 5:30pm**

Please consider providing your feedback, even if  
you are not impacted.

Changes to options may still be made based  
on community feedback.

QR code will take you to  
the survey

Includes Attendance  
Area Locator Tool





**Thank You!**

