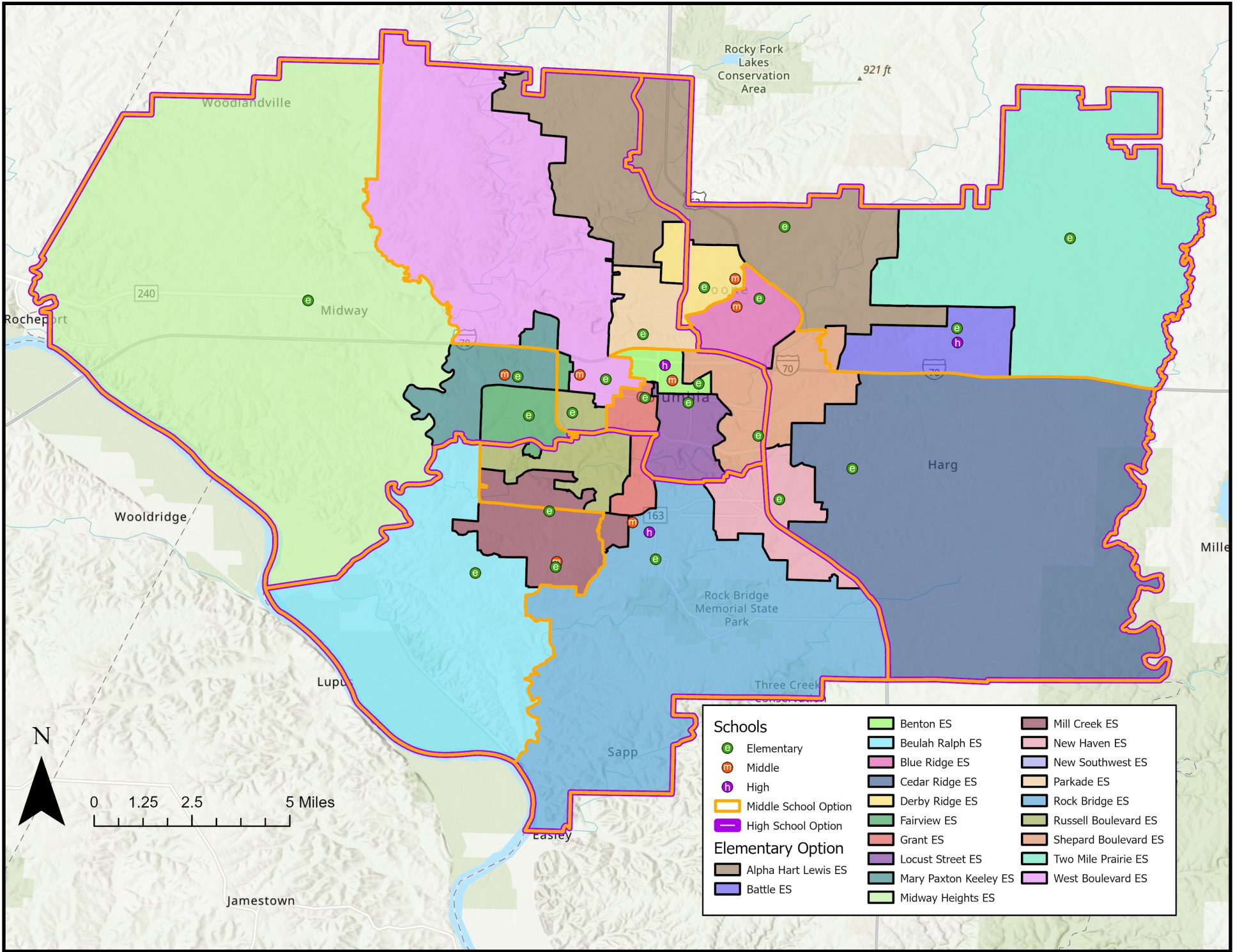


Current: 2023-24 Attendance Areas



Attendance Area	2023-24 Capacity	K-12 Live-In Enrollment	Live-In Utilization	Diversity Index	Low SES %	EL %	IEP %	2028-29 Utilization
Alpha Hart Lewis ES	650	522	80%	2.31	52%	14%	12%	74%
Battle ES	450	377	84%	2.59	67%	9%	15%	88%
Benton ES	260	157	60%	2.76	73%	13%	17%	67%
Beulah Ralph ES	650	669	103%	1.20	16%	6%	9%	88%
Blue Ridge ES	500	493	99%	2.96	72%	20%	12%	110%
Cedar Ridge ES	650	487	75%	1.83	41%	4%	8%	80%
Derby Ridge ES	556	395	71%	2.62	58%	14%	17%	79%
Fairview ES	550	471	86%	1.39	26%	7%	10%	89%
Grant ES	375	335	89%	1.75	36%	10%	8%	95%
Locust Street ES	340	134	39%	2.26	73%	28%	9%	41%
Mary Paxton Keeley ES	723	630	87%	2.01	33%	14%	8%	84%
Midway Heights ES	295	253	86%	1.50	27%	4%	9%	83%
Mill Creek ES	673	588	87%	1.27	17%	7%	7%	85%
New Haven ES	293	280	96%	2.20	59%	21%	14%	97%
Parkade ES	478	431	90%	2.08	52%	15%	10%	87%
Rock Bridge ES	650	566	87%	1.78	37%	12%	9%	84%
Russell Boulevard ES	482	486	101%	1.14	17%	4%	4%	103%
Shepard Boulevard ES	652	551	85%	2.46	61%	15%	12%	81%
Two Mile Prairie ES	195	152	78%	1.86	32%	2%	9%	78%
West Boulevard ES	438	330	75%	2.29	55%	10%	12%	78%
ELEMENTARY SUBTOTAL	10,510	8,307	79%	1.95	43%	11%	10%	79%
Gentry	706	784	111%	1.59	30%	5%	9%	116%
Jefferson	659	334	51%	2.15	47%	9%	10%	55%
John Warner	700	547	78%	1.09	13%	3%	7%	81%
Lange	715	628	88%	2.54	59%	9%	16%	90%
Oakland	675	547	81%	2.42	53%	10%	13%	95%
Smithton	704	512	73%	1.49	25%	9%	10%	80%
West	777	709	91%	2.07	53%	8%	16%	100%
MIDDLE SUBTOTAL	4,936	4,061	82%	1.90	41%	7%	12%	88%
Battle	1,800	1,554	86%	2.49	47%	9%	12%	87%
Hickman	2,125	2,081	98%	1.83	34%	6%	12%	107%
Rock Bridge	1,800	2,029	113%	1.40	18%	3%	7%	120%
HIGH SUBTOTAL	5,725	5,664	99%	1.86	33%	6%	11%	105%
TOTAL	21,171	18,032	85%	1.91	41%	9%	12%	89%

Elementary to Middle Feeders	Gentry	Jefferson	John Warner	Lange	Oakland	Smithton	West
Alpha Hart Lewis ES				60%			40%
Battle ES				100%			
Benton ES		100%					
Beulah Ralph ES			100%				
Blue Ridge ES					100%		
Cedar Ridge ES					100%		
Derby Ridge ES				81%			19%
Fairview ES	1%					89%	10%
Grant ES	47%	53%					
Locust Street ES		100%					
Mary Paxton Keeley ES						73%	27%
Midway Heights ES						100%	
Mill Creek ES	36%		64%				
New Haven ES	82%				18%		
Parkade ES							100%
Rock Bridge ES	100%						
Russell Boulevard ES	66%						34%
Shepard Boulevard ES		34%		28%	39%		
Two Mile Prairie ES				100%			
West Boulevard ES							100%

% of students who move on to middle school together

Middle to High Feeders	Battle	Hickman	Rock Bridge
Gentry			100%
Jefferson (boundary only)		100%	
John Warner			100%
Lange	100%		
Oakland	100%		
Smithton		100%	
West		100%	

% of students who move on to high school together

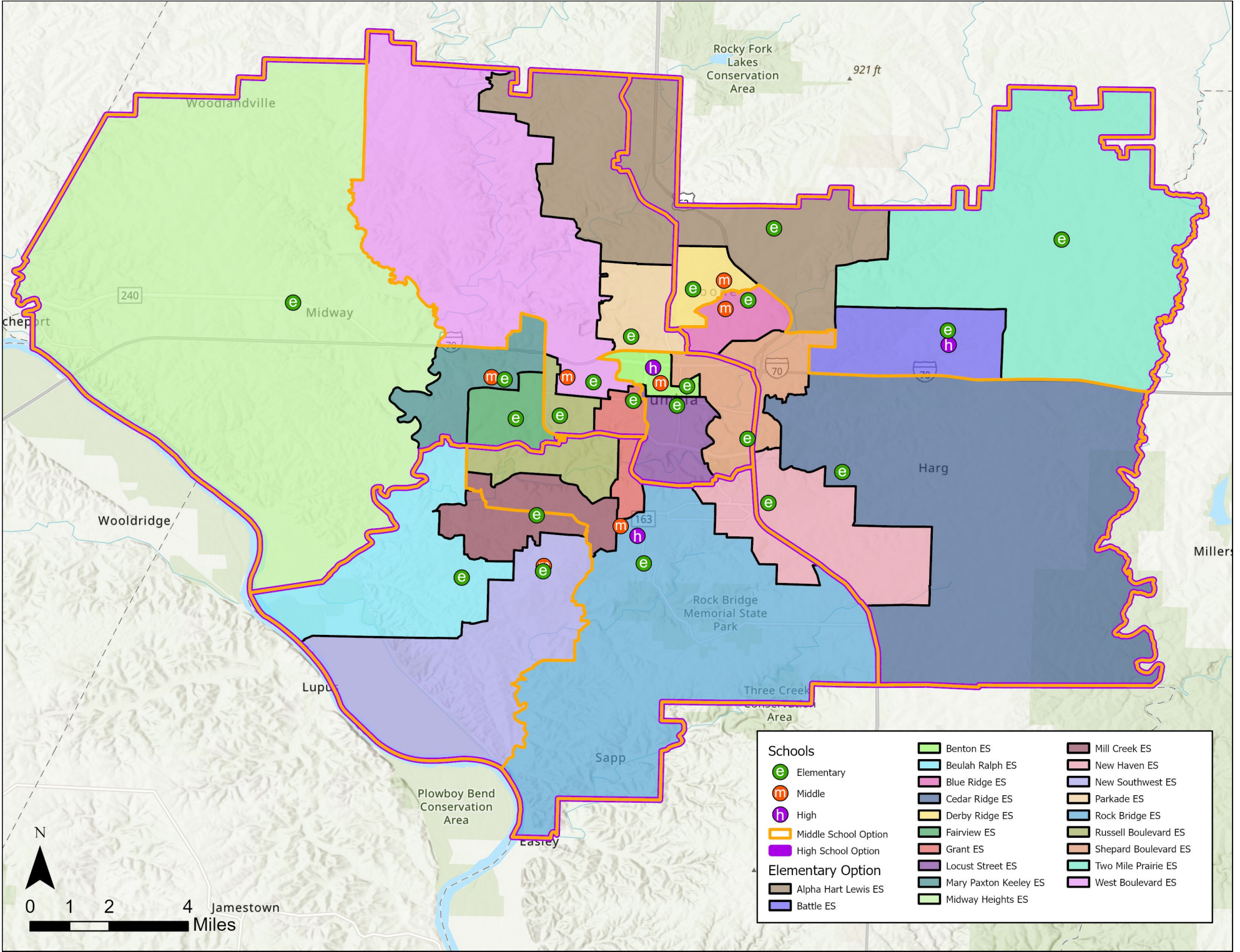
Attend Closest School	
ES	55%
MS	62%
HS	86%

% of students who attend their geographically closest school



QR code will take you to the survey, which includes the attendance area locator application.

Option A-1



Attendance Area	2025-26 Capacity	K-12 Live-In Enrollment	Live-In Utilization	Diversity Index	Low SES %	EL %	IEP %	2028-29 Utilization
Alpha Hart Lewis ES	650	528	81%	2.27	56%	15%	14%	77%
Battle ES	650	488	75%	2.60	66%	10%	14%	77%
Benton ES	260	158	61%	2.77	72%	13%	17%	68%
Beulah Ralph ES	650	522	80%	1.26	17%	5%	9%	68%
Blue Ridge ES	500	346	69%	2.94	69%	20%	11%	77%
Cedar Ridge ES	650	533	82%	1.79	44%	6%	8%	85%
Derby Ridge ES	556	373	67%	2.77	58%	13%	17%	74%
Fairview ES	550	438	80%	1.28	23%	7%	9%	79%
Grant ES	375	292	78%	1.86	37%	11%	9%	82%
Locust Street ES	340	134	39%	2.26	73%	28%	9%	41%
Mary Paxton Keeley ES	723	602	83%	1.97	31%	13%	8%	81%
Midway Heights ES	295	253	86%	1.50	27%	4%	9%	83%
Mill Creek ES	673	531	79%	1.30	21%	7%	8%	78%
New Haven ES	293	232	79%	2.36	55%	23%	11%	79%
Parkade ES	478	380	79%	2.09	49%	13%	10%	77%
Rock Bridge ES	650	470	72%	2.06	44%	10%	11%	71%
Russell Boulevard ES	650	527	81%	1.35	24%	6%	6%	86%
Shepard Boulevard ES	652	502	77%	2.57	65%	16%	13%	78%
Two Mile Prairie ES	195	173	89%	1.99	32%	3%	9%	89%
West Boulevard ES	438	367	84%	2.30	59%	13%	11%	86%
New Southwest ES	650	458	70%	1.06	15%	10%	7%	66%
ELEMENTARY SUBTOTAL	10,878	8,307	76%	1.95	43%	11%	10%	76%
Gentry	706	662	94%	1.68	32%	5%	8%	99%
Jefferson	659	237	36%	2.35	55%	11%	12%	41%
John Warner	700	669	96%	1.10	15%	3%	8%	98%
Lange	715	607	85%	2.52	58%	9%	16%	87%
Oakland	675	568	84%	2.45	54%	10%	13%	97%
Smithton	704	595	85%	1.66	28%	9%	10%	95%
West	777	723	93%	1.94	50%	7%	15%	99%
MIDDLE SUBTOTAL	4,936	4,061	82%	1.90	41%	7%	12%	88%
Battle	1,800	1,554	86%	2.49	47%	9%	12%	87%
Hickman	2,125	2,081	98%	1.83	34%	6%	12%	107%
Rock Bridge	1,800	2,029	113%	1.40	18%	3%	7%	120%
HIGH SUBTOTAL	5,725	5,664	99%	1.86	33%	6%	11%	105%
TOTAL	21,539	18,032	84%	1.91	41%	9%	12%	89%

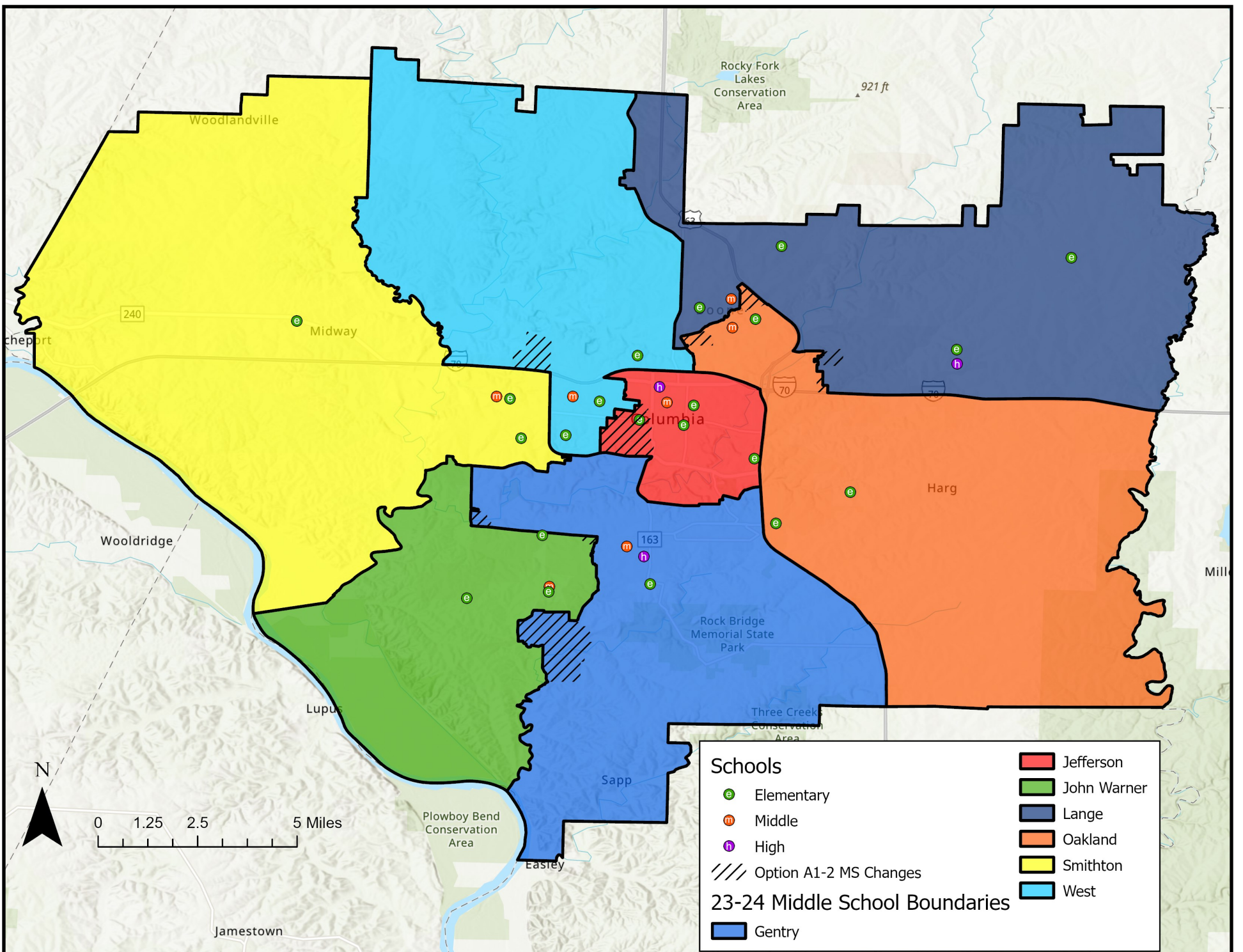
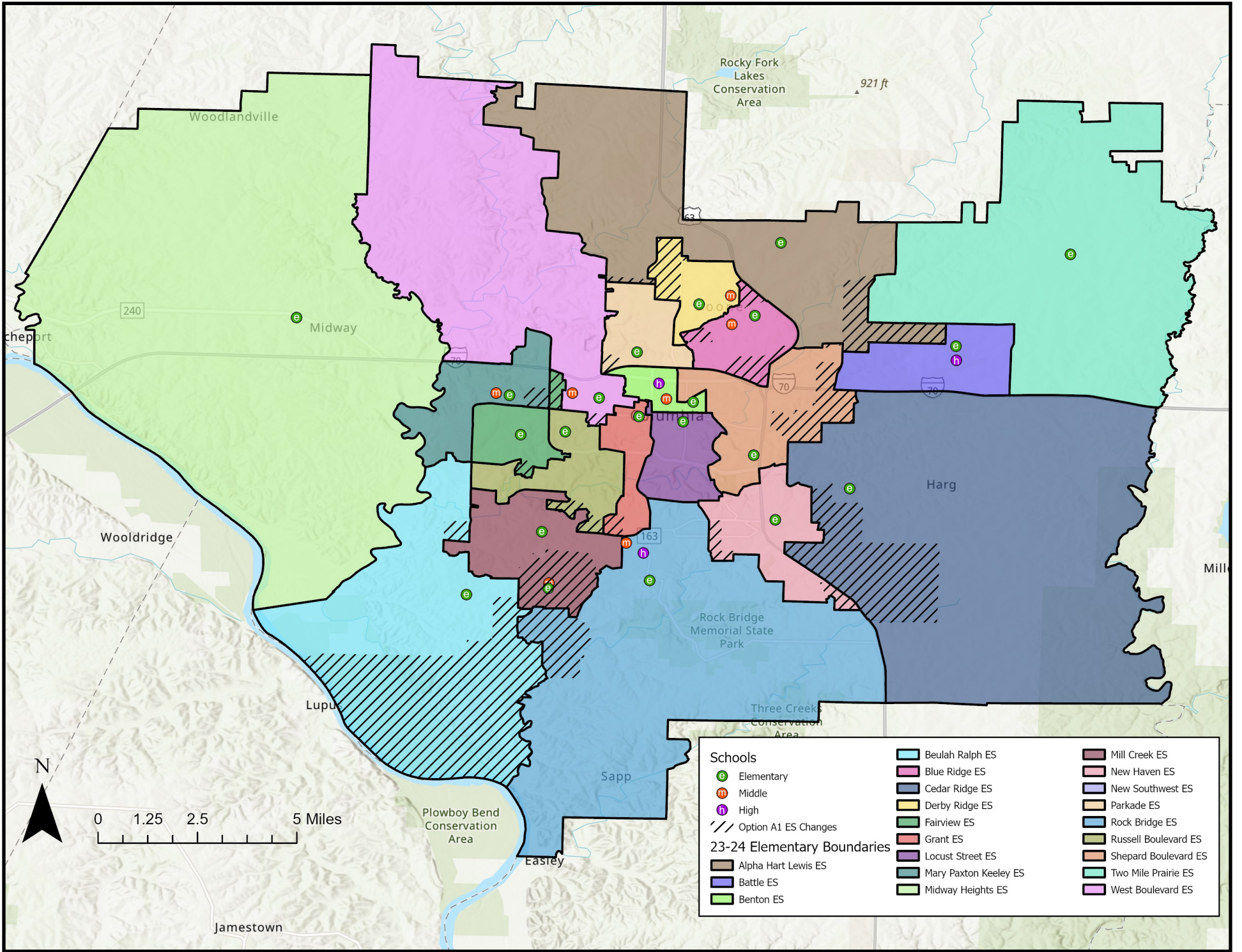
Elementary to Middle Feeders	Gentry	Jefferson	John Warner	Lange	Oakland	Smithton	West
Alpha Hart Lewis ES				47%			53%
Battle ES				100%			
Benton ES		100%					
Beulah Ralph ES			100%				
Blue Ridge ES					100%		
Cedar Ridge ES					100%		
Derby Ridge ES				100%			
Fairview ES						100%	
Grant ES	38%						62%
Locust Street ES		100%					
Mary Paxton Keeley ES						100%	
Midway Heights ES						100%	
Mill Creek ES	53%		47%				
New Haven ES	61%				39%		
Parkade ES							100%
Rock Bridge ES	100%						
Russell Boulevard ES	54%						46%
Shepard Boulevard ES		37%			63%		
Two Mile Prairie ES				100%			
West Boulevard ES							100%
New Southwest ES			100%				

Middle to High Feeders	Battle	Hickman	Rock Bridge	Students Moved		
				ES	MS	HS
Gentry			100%			
Jefferson (boundary only)		100%				
John Warner			100%			
Lange	100%					
Oakland	100%					
Smithton		100%				
West		100%				

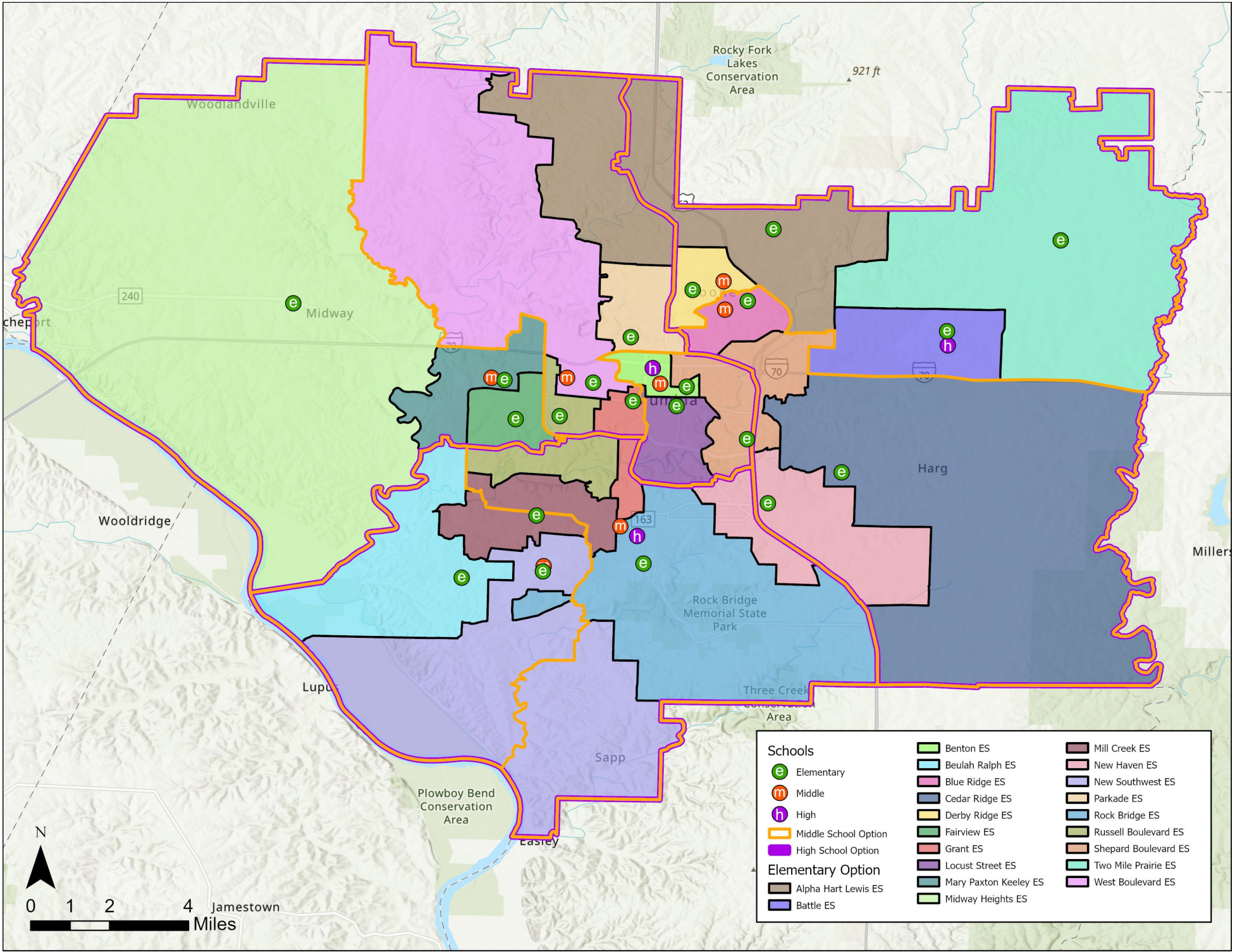
Attend Closest School		
ES	4,420	53%
MS	2,543	63%
HS	4,883	86%

Map & metrics represent end state for each option (incorporates phase 2 and phase 3 changes). Please refer to the attendance area locator or presentation to review the changes associated with each phase. Note: All secondary changes will occur in Phase 2 (2025-26).

Option A-1: Areas of Change



Option A-2



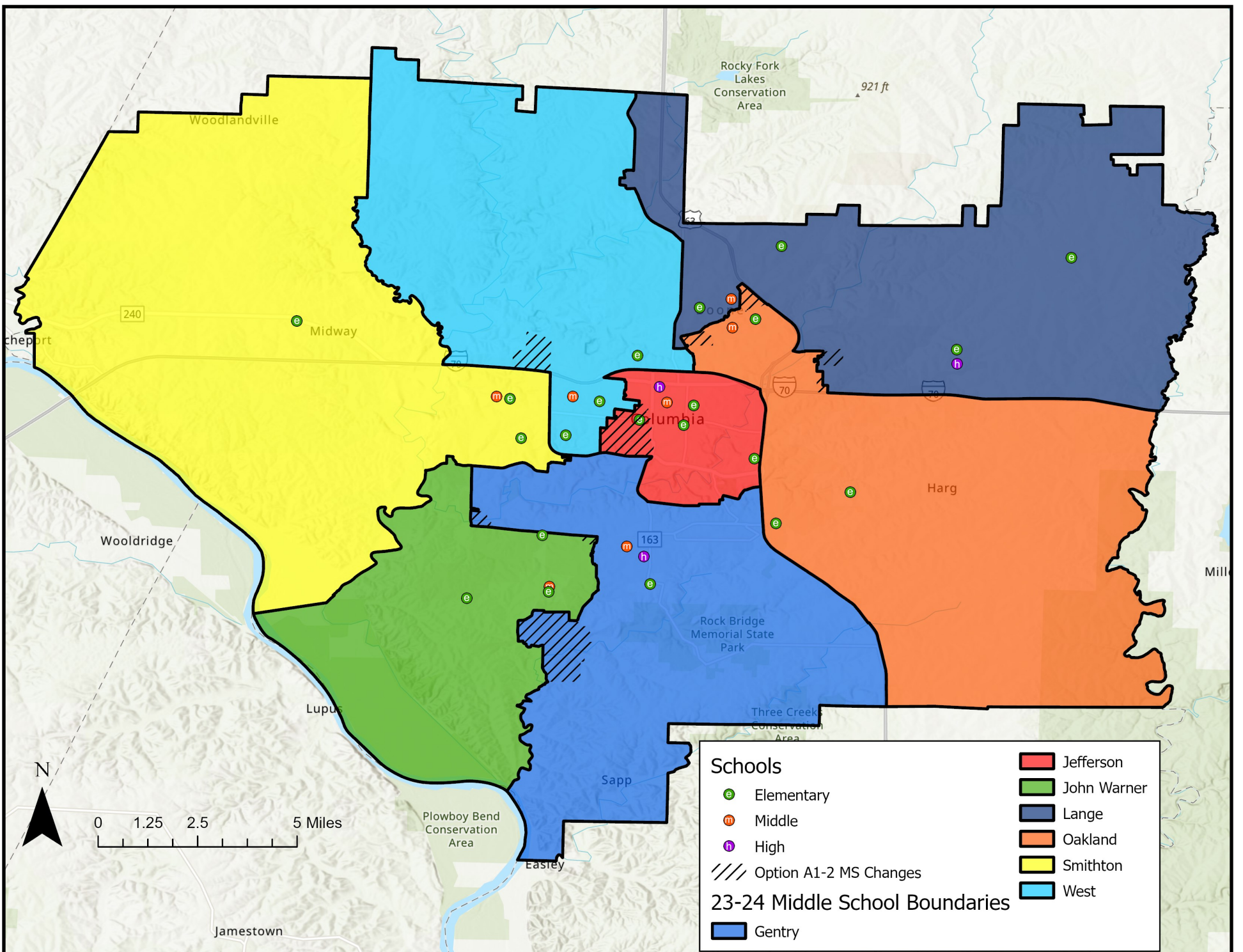
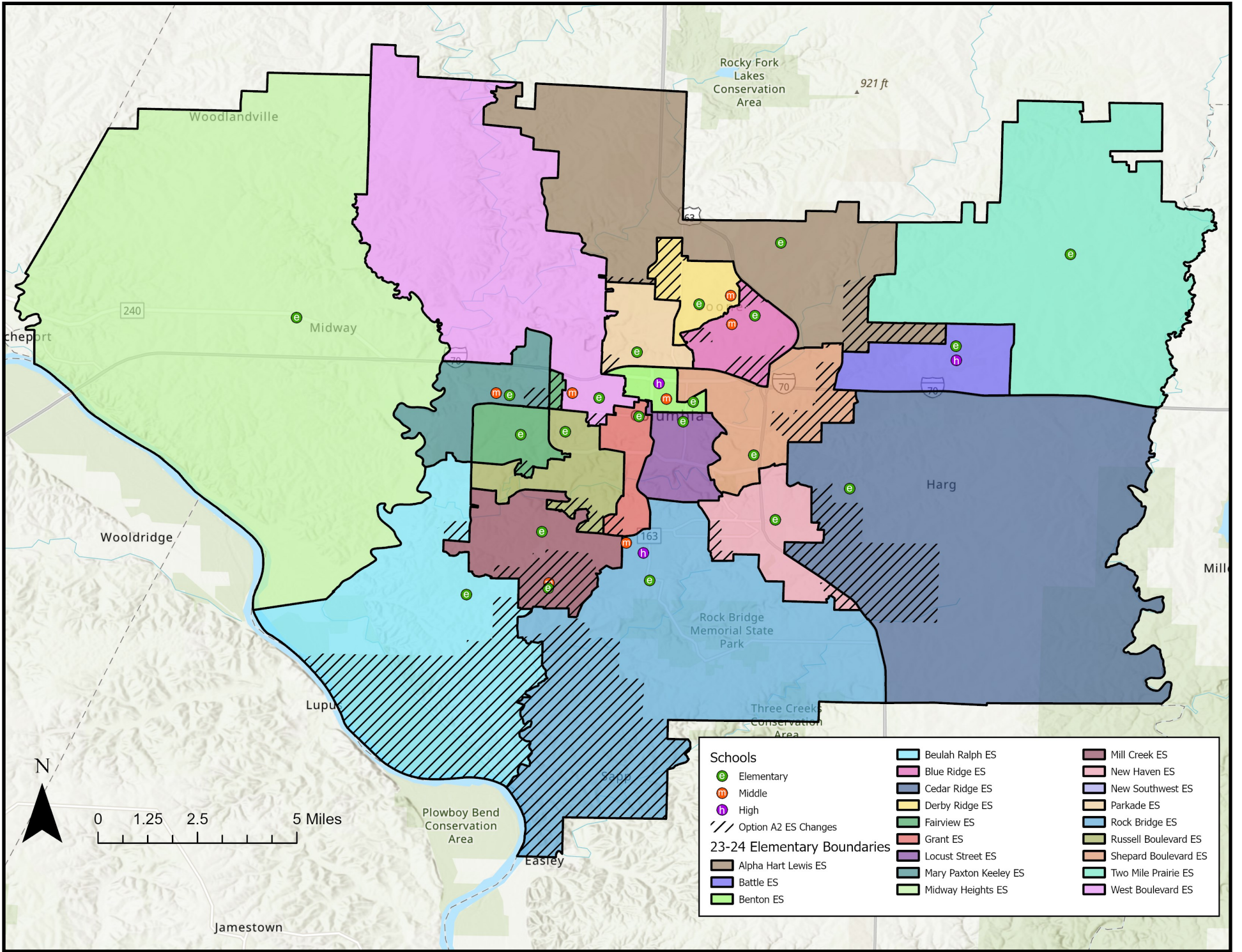
Attendance Area	2025-26 Capacity	K-12 Live-In Enrollment	Live-In Utilization	Diversity Index	Low SES %	EL %	IEP %	2028-29 Utilization
Alpha Hart Lewis ES	650	528	81%	2.27	56%	15%	14%	77%
Battle ES	650	488	75%	2.60	66%	10%	14%	77%
Benton ES	260	158	61%	2.77	72%	13%	17%	68%
Beulah Ralph ES	650	522	80%	1.26	17%	5%	9%	68%
Blue Ridge ES	500	346	69%	2.94	69%	20%	11%	77%
Cedar Ridge ES	650	533	82%	1.79	44%	6%	8%	85%
Derby Ridge ES	556	373	67%	2.77	58%	13%	17%	74%
Fairview ES	550	438	80%	1.28	23%	7%	9%	79%
Grant ES	375	292	78%	1.86	37%	11%	9%	82%
Locust Street ES	340	134	39%	2.26	73%	28%	9%	41%
Mary Paxton Keeley ES	723	602	83%	1.97	31%	13%	8%	81%
Midway Heights ES	295	253	86%	1.50	27%	4%	9%	83%
Mill Creek ES	673	487	72%	1.32	24%	8%	8%	72%
New Haven ES	293	232	79%	2.36	55%	23%	11%	79%
Parkade ES	478	380	79%	2.09	49%	13%	10%	77%
Rock Bridge ES	650	529	81%	1.94	42%	10%	11%	80%
Russell Boulevard ES	650	506	78%	1.36	24%	6%	7%	83%
Shepard Boulevard ES	652	502	77%	2.57	65%	16%	13%	78%
Two Mile Prairie ES	195	173	89%	1.99	32%	3%	9%	89%
West Boulevard ES	438	367	84%	2.30	59%	13%	11%	86%
New Southwest ES	650	464	71%	1.06	12%	9%	6%	67%
ELEMENTARY SUBTOTAL	10,878	8,307	76%	1.95	43%	11%	10%	76%
Gentry	706	662	94%	1.68	32%	5%	8%	99%
Jefferson	659	237	36%	2.35	55%	11%	12%	41%
John Warner	700	669	96%	1.10	15%	3%	8%	98%
Lange	715	607	85%	2.52	58%	9%	16%	87%
Oakland	675	568	84%	2.45	54%	10%	13%	97%
Smithton	704	595	85%	1.66	28%	9%	10%	95%
West	777	723	93%	1.94	50%	7%	15%	99%
MIDDLE SUBTOTAL	4,936	4,061	82%	1.90	41%	7%	12%	88%
Battle	1,800	1,554	86%	2.49	47%	9%	12%	87%
Hickman	2,125	2,081	98%	1.83	34%	6%	12%	107%
Rock Bridge	1,800	2,029	113%	1.40	18%	3%	7%	120%
HIGH SUBTOTAL	5,725	5,664	99%	1.86	33%	6%	11%	105%
TOTAL	21,539	18,032	84%	1.91	41%	9%	12%	89%

Elementary to Middle Feeders	Gentry	Jefferson	John Warner	Lange	Oakland	Smithton	West
Alpha Hart Lewis ES				47%			53%
Battle ES				100%			
Benton ES		100%					
Beulah Ralph ES			100%				
Blue Ridge ES					100%		
Cedar Ridge ES					100%		
Derby Ridge ES				100%			
Fairview ES						100%	
Grant ES	38%						62%
Locust Street ES		100%					
Mary Paxton Keeley ES						100%	
Midway Heights ES						100%	
Mill Creek ES	62%		38%				
New Haven ES	61%				39%		
Parkade ES							100%
Rock Bridge ES	81%		19%				
Russell Boulevard ES	52%						48%
Shepard Boulevard ES		37%			63%		
Two Mile Prairie ES				100%			
West Boulevard ES							100%
New Southwest ES	8%		92%				

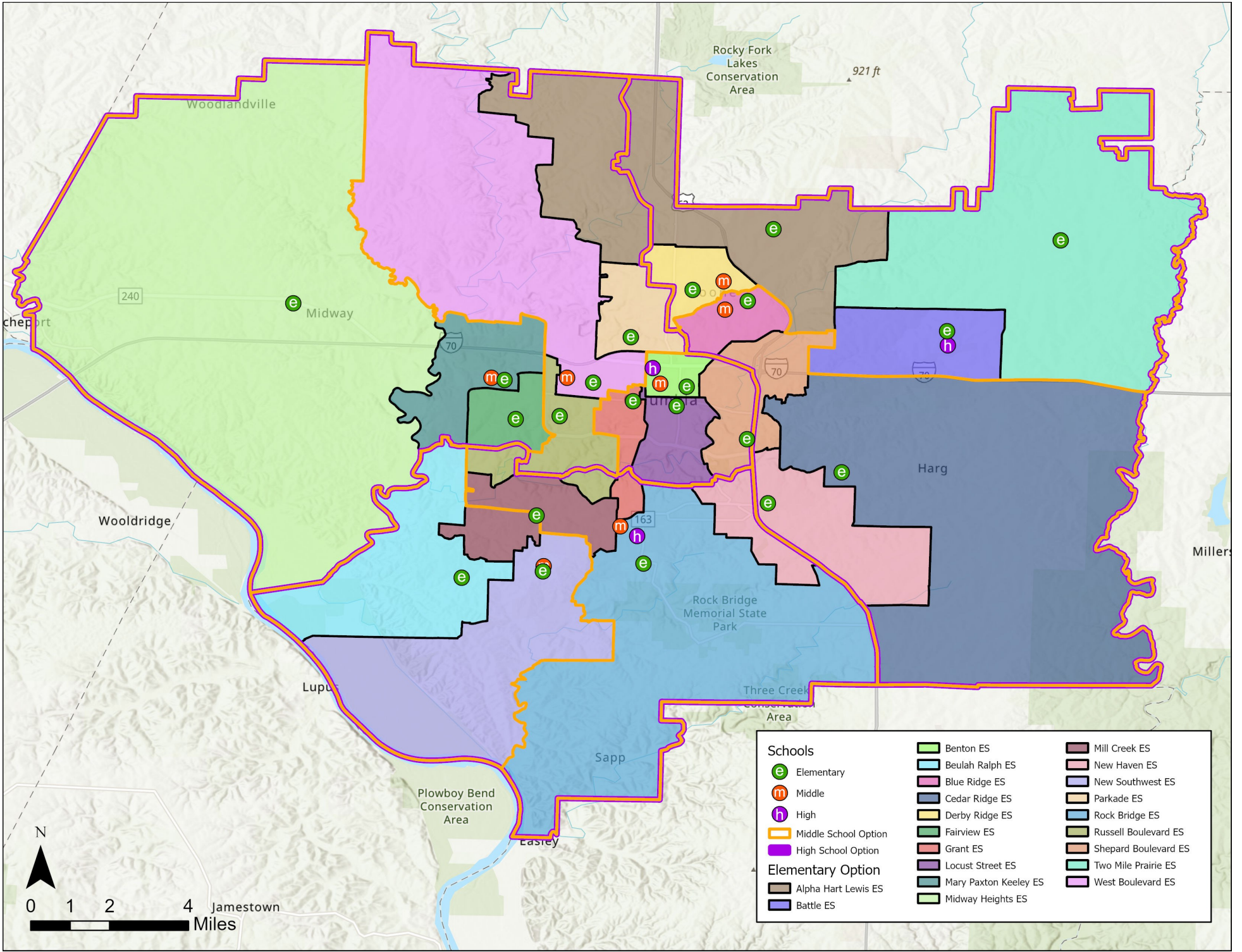
Middle to High Feeders	Battle	Hickman	Rock Bridge	Students Moved		
				ES	MS	HS
Gentry			100%	1,257	375	0
Jefferson (boundary only)		100%		0	0	0
John Warner			100%			
Lange	100%					
Oakland	100%					
Smithton		100%				
West		100%				

Map & metrics represent end state for each option (incorporates phase 2 and phase 3 changes). Please refer to the attendance area locator or presentation to review the changes associated with each phase. Note: All secondary changes will occur in Phase 2 (2025-26).

Option A-2: Areas of Change



Option B-1



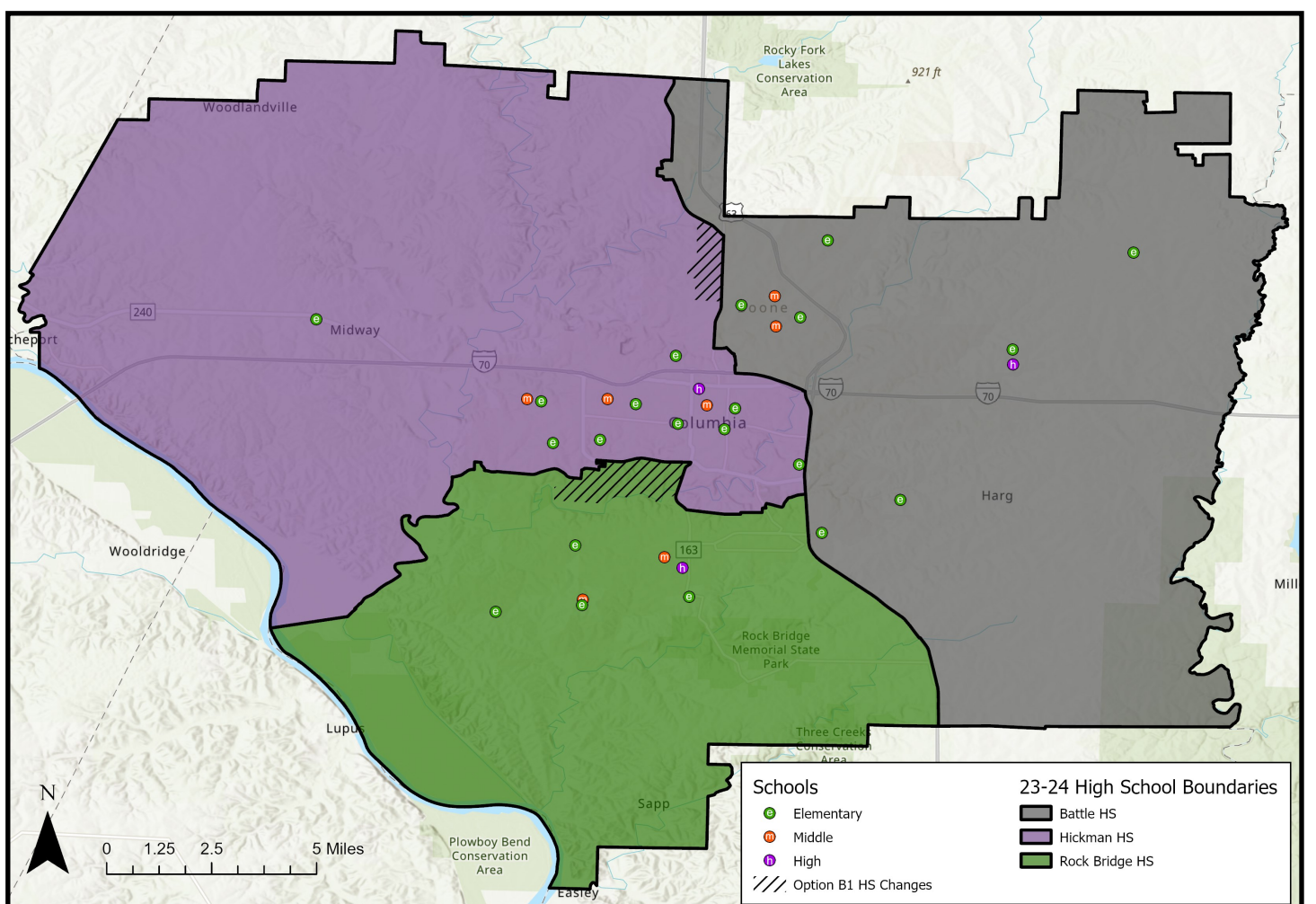
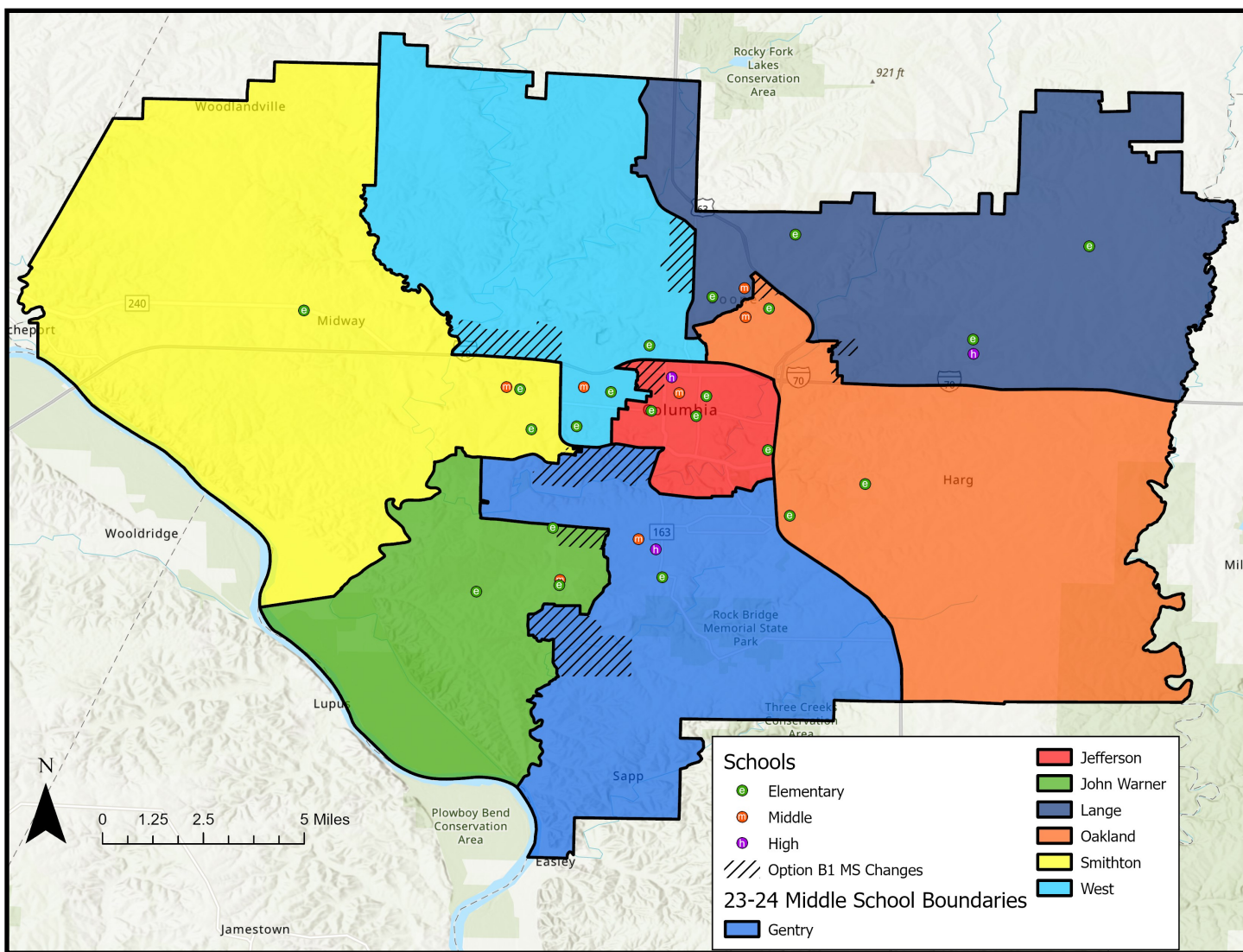
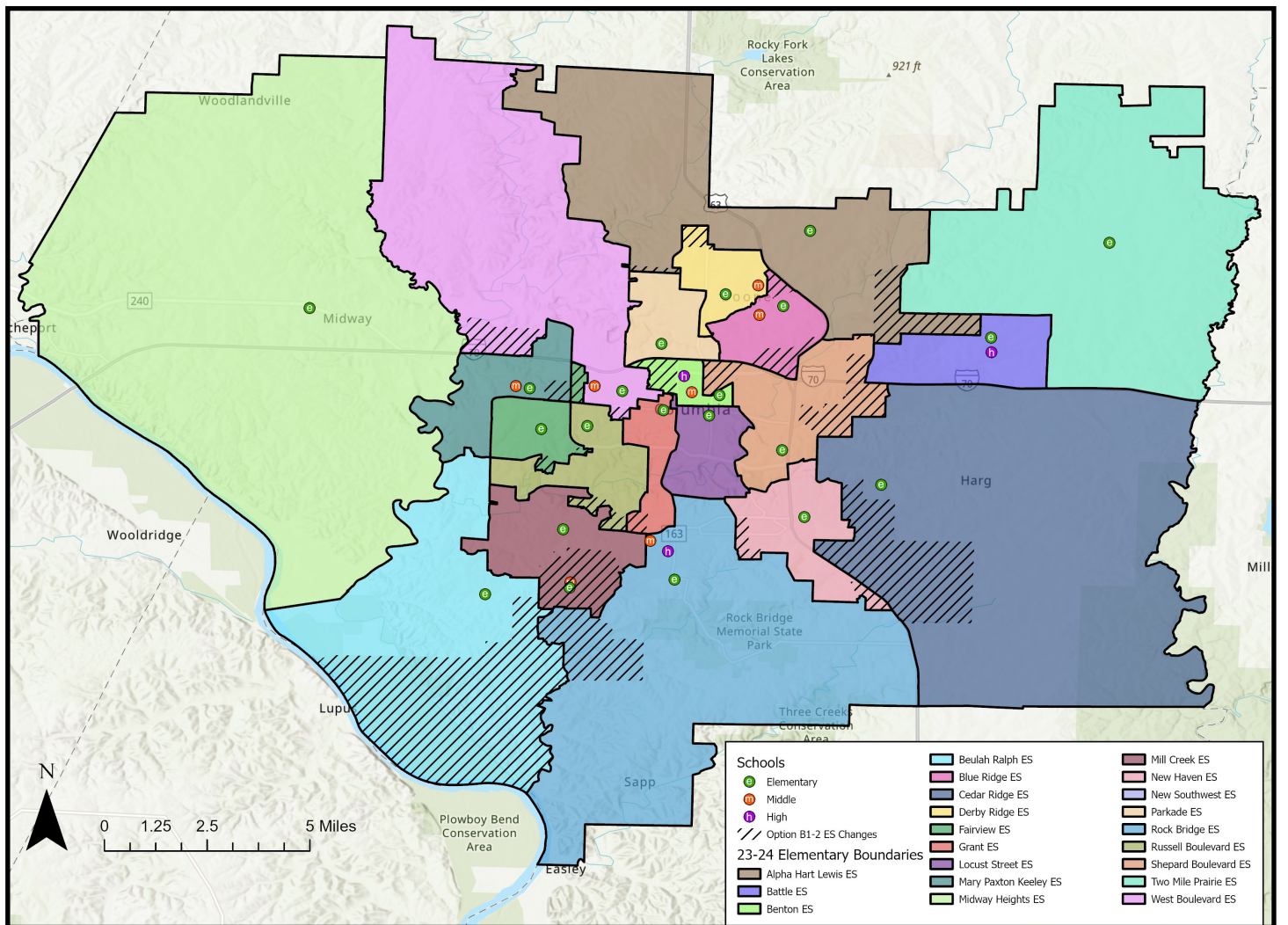
Attendance Area	2025-26 Capacity	K-12 Live-In Enrollment	Live-In Utilization	Diversity Index	Low SES %	EL %	IEP %	2028-29 Utilization
Alpha Hart Lewis ES	650	461	71%	2.30	55%	15%	13%	65%
Battle ES	650	488	75%	2.60	66%	10%	14%	77%
Benton ES	260	117	45%	2.50	76%	17%	17%	50%
Beulah Ralph ES	650	522	80%	1.26	17%	5%	9%	68%
Blue Ridge ES	500	360	72%	2.94	68%	19%	11%	80%
Cedar Ridge ES	650	533	82%	1.79	44%	6%	8%	85%
Derby Ridge ES	556	426	77%	2.64	58%	14%	17%	86%
Fairview ES	550	437	79%	1.28	23%	7%	9%	78%
Grant ES	375	292	78%	1.86	37%	11%	9%	82%
Locust Street ES	340	134	39%	2.26	73%	28%	9%	41%
Mary Paxton Keeley ES	723	629	87%	2.00	33%	13%	8%	84%
Midway Heights ES	295	253	86%	1.50	27%	4%	9%	83%
Mill Creek ES	673	531	79%	1.30	21%	7%	8%	78%
New Haven ES	293	232	79%	2.36	55%	23%	11%	79%
Parkade ES	478	431	90%	2.08	52%	15%	10%	87%
Rock Bridge ES	650	460	71%	2.08	45%	10%	11%	70%
Russell Boulevard ES	650	528	81%	1.35	24%	6%	6%	86%
Shepard Boulevard ES	652	480	74%	2.60	65%	16%	13%	75%
Two Mile Prairie ES	195	173	89%	1.99	32%	3%	9%	89%
West Boulevard ES	438	352	80%	2.43	56%	11%	12%	84%
New Southwest ES	650	468	72%	1.06	15%	10%	7%	67%
ELEMENTARY SUBTOTAL	10,878	8,307	76%	1.95	43%	11%	10%	76%
Gentry	706	615	87%	1.73	33%	4%	9%	92%
Jefferson	659	303	46%	2.06	44%	9%	10%	50%
John Warner	700	658	94%	1.09	15%	3%	8%	96%
Lange	715	652	91%	2.48	59%	9%	16%	90%
Oakland	675	576	85%	2.45	55%	10%	13%	99%
Smithton	704	603	86%	1.67	29%	9%	10%	96%
West	777	654	84%	1.94	50%	8%	16%	94%
MIDDLE SUBTOTAL	4,936	4,061	82%	1.90	41%	7%	12%	88%
Battle	1,800	1,602	89%	2.48	47%	9%	12%	91%
Hickman	2,125	2,115	100%	1.80	32%	6%	12%	108%
Rock Bridge	1,800	1,947	108%	1.42	19%	3%	7%	116%
HIGH SUBTOTAL	5,725	5,664	99%	1.86	33%	6%	11%	105%
TOTAL	21,539	18,032	84%	1.91	41%	9%	12%	89%

Elementary to Middle Feeders	Gentry	Jefferson	John Warner	Lange	Oakland	Smithton	West
Alpha Hart Lewis ES				54%			46%
Battle ES				100%			
Benton ES		100%					
Beulah Ralph ES			100%				
Blue Ridge ES					100%		
Cedar Ridge ES					100%		
Derby Ridge ES				100%			
Fairview ES						100%	
Grant ES	38%	62%					
Locust Street ES		100%					
Mary Paxton Keeley ES						100%	
Midway Heights ES						100%	
Mill Creek ES	62%		38%				
New Haven ES	61%				39%		
Parkade ES							100%
Rock Bridge ES	100%						
Russell Boulevard ES	32%						68%
Shepard Boulevard ES		34%			66%		
Two Mile Prairie ES				100%			
West Boulevard ES							100%
New Southwest ES			100%				

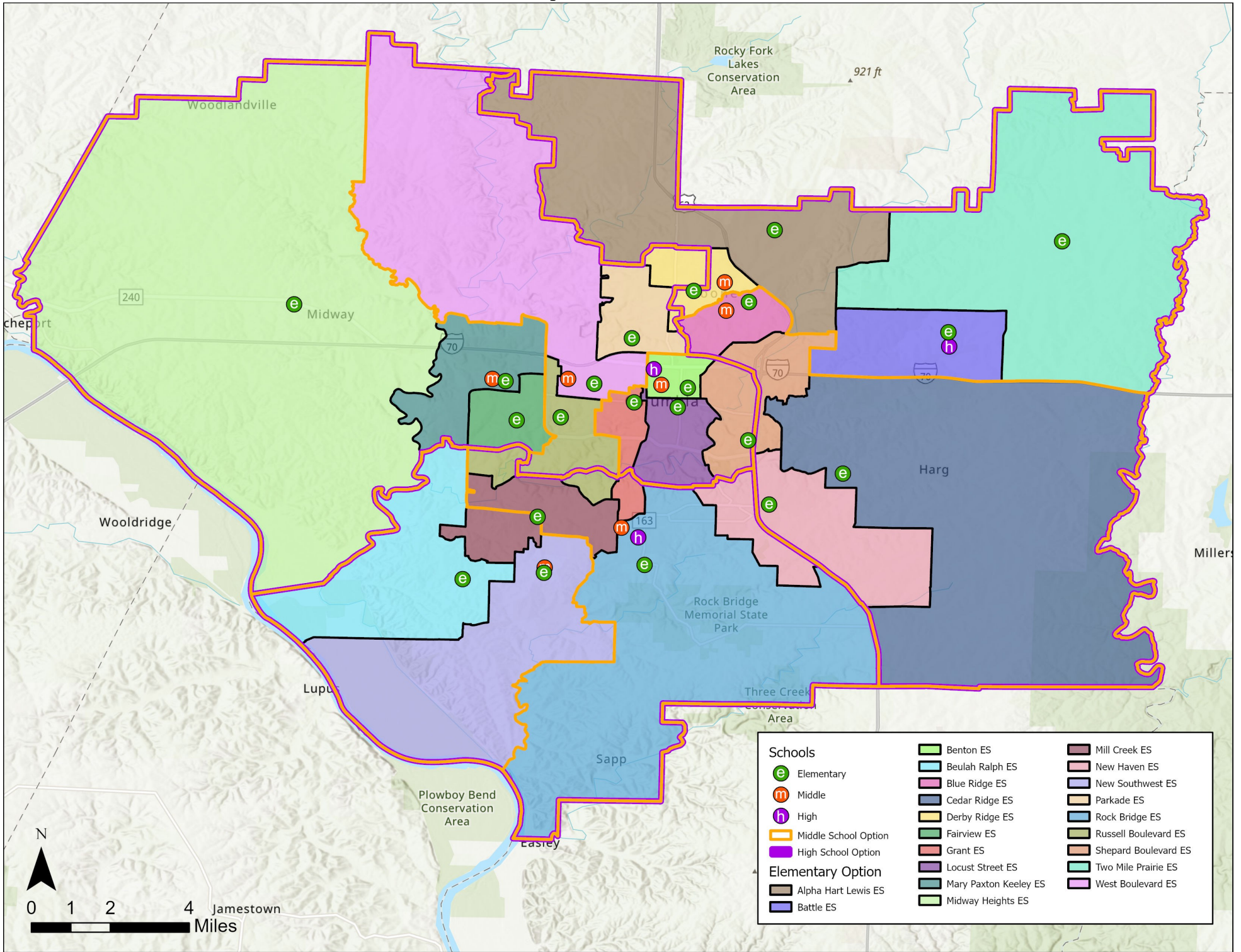
Middle to High Feeders	Battle	Hickman	Rock Bridge	Students Moved
Gentry			100%	ES 1,219 15%
Jefferson (boundary only)		100%		MS 437 11%
John Warner			100%	HS 130 2%
Lange	100%			Attend Closest School
Oakland	100%			ES 4,549 55%
Smithton		100%		MS 2,617 64%
West		100%		HS 4,797 85%

Map & metrics represent end state for each option (incorporates phase 2 and phase 3 changes). Please refer to the attendance area locator or presentation to review the changes associated with each phase. Note: All secondary changes will occur in Phase 2 (2025-26).

Option B-1: Areas of Change



Option B-2



Attendance Area	2025-26 Capacity	K-12 Live-In Enrollment	Live-In Utilization	Diversity Index	Low SES %	EL %	IEP %	2028-29 Utilization
Alpha Hart Lewis ES	650	461	71%	2.30	55%	15%	13%	65%
Battle ES	650	488	75%	2.60	66%	10%	14%	77%
Benton ES	260	117	45%	2.50	76%	17%	17%	50%
Beulah Ralph ES	650	522	80%	1.26	17%	5%	9%	68%
Blue Ridge ES	500	360	72%	2.94	68%	19%	11%	80%
Cedar Ridge ES	650	533	82%	1.79	44%	6%	8%	85%
Derby Ridge ES	556	426	77%	2.64	58%	14%	17%	86%
Fairview ES	550	437	79%	1.28	23%	7%	9%	78%
Grant ES	375	292	78%	1.86	37%	11%	9%	82%
Locust Street ES	340	134	39%	2.26	73%	28%	9%	41%
Mary Paxton Keeley ES	723	629	87%	2.00	33%	13%	8%	84%
Midway Heights ES	295	253	86%	1.50	27%	4%	9%	83%
Mill Creek ES	673	531	79%	1.30	21%	7%	8%	78%
New Haven ES	293	232	79%	2.36	55%	23%	11%	79%
Parkade ES	478	431	90%	2.08	52%	15%	10%	87%
Rock Bridge ES	650	460	71%	2.08	45%	10%	11%	70%
Russell Boulevard ES	650	528	81%	1.35	24%	6%	6%	86%
Shepard Boulevard ES	652	480	74%	2.60	65%	16%	13%	75%
Two Mile Prairie ES	195	173	89%	1.99	32%	3%	9%	89%
West Boulevard ES	438	352	80%	2.43	56%	11%	12%	84%
New Southwest ES	650	468	72%	1.06	15%	10%	7%	67%
ELEMENTARY SUBTOTAL	10,878	8,307	76%	1.95	43%	11%	10%	76%
Gentry	706	615	87%	1.73	33%	4%	9%	92%
Jefferson	659	303	46%	2.06	44%	9%	10%	50%
John Warner	700	658	94%	1.09	15%	3%	8%	96%
Lange	715	599	84%	2.69	56%	8%	16%	85%
Oakland	675	576	85%	2.45	55%	10%	13%	99%
Smithton	704	603	86%	1.67	29%	9%	10%	96%
West	777	707	91%	1.79	54%	9%	16%	99%
MIDDLE SUBTOTAL	4,936	4,061	82%	1.90	41%	7%	12%	88%
Battle	1,800	1,567	87%	2.40	46%	9%	12%	88%
Hickman	2,125	2,150	101%	1.86	34%	6%	12%	110%
Rock Bridge	1,800	1,947	108%	1.42	19%	3%	7%	116%
HIGH SUBTOTAL	5,725	5,664	99%	1.86	33%	6%	11%	105%
TOTAL	21,539	18,032	84%	1.91	41%	9%	12%	89%

Elementary to Middle Feeders	Gentry	Jefferson	John Warner	Lange	Oakland	Smithton	West
Alpha Hart Lewis ES				100%			
Battle ES				100%			
Benton ES		100%					
Beulah Ralph ES			100%				
Blue Ridge ES					100%		
Cedar Ridge ES					100%		
Derby Ridge ES				33%			67%
Fairview ES						100%	
Grant ES	38%	62%					
Locust Street ES		100%					
Mary Paxton Keeley ES						100%	
Midway Heights ES						100%	
Mill Creek ES	62%		38%				
New Haven ES	61%				39%		
Parkade ES							100%
Rock Bridge ES	100%						
Russell Boulevard ES	32%						68%
Shepard Boulevard ES		34%			66%		
Two Mile Prairie ES				100%			
West Boulevard ES							100%
New Southwest ES			100%				

Middle to High Feeders	Battle	Hickman	Rock Bridge	Students Moved		
				ES	MS	HS
Gentry			100%			
Jefferson (boundary only)		100%				
John Warner			100%			
Lange	100%					
Oakland	100%					
Smithton		100%				
West		100%				
				Attend Closest School		
				ES	4,549	55%
				MS	2,568	63%
				HS	4,832	85%

Map & metrics represent end state for each option (incorporates phase 2 and phase 3 changes). Please refer to the attendance area locator or presentation to review the changes associated with each phase. Note: All secondary changes will occur in Phase 2 (2025-26).

Option B-2: Areas of Change

