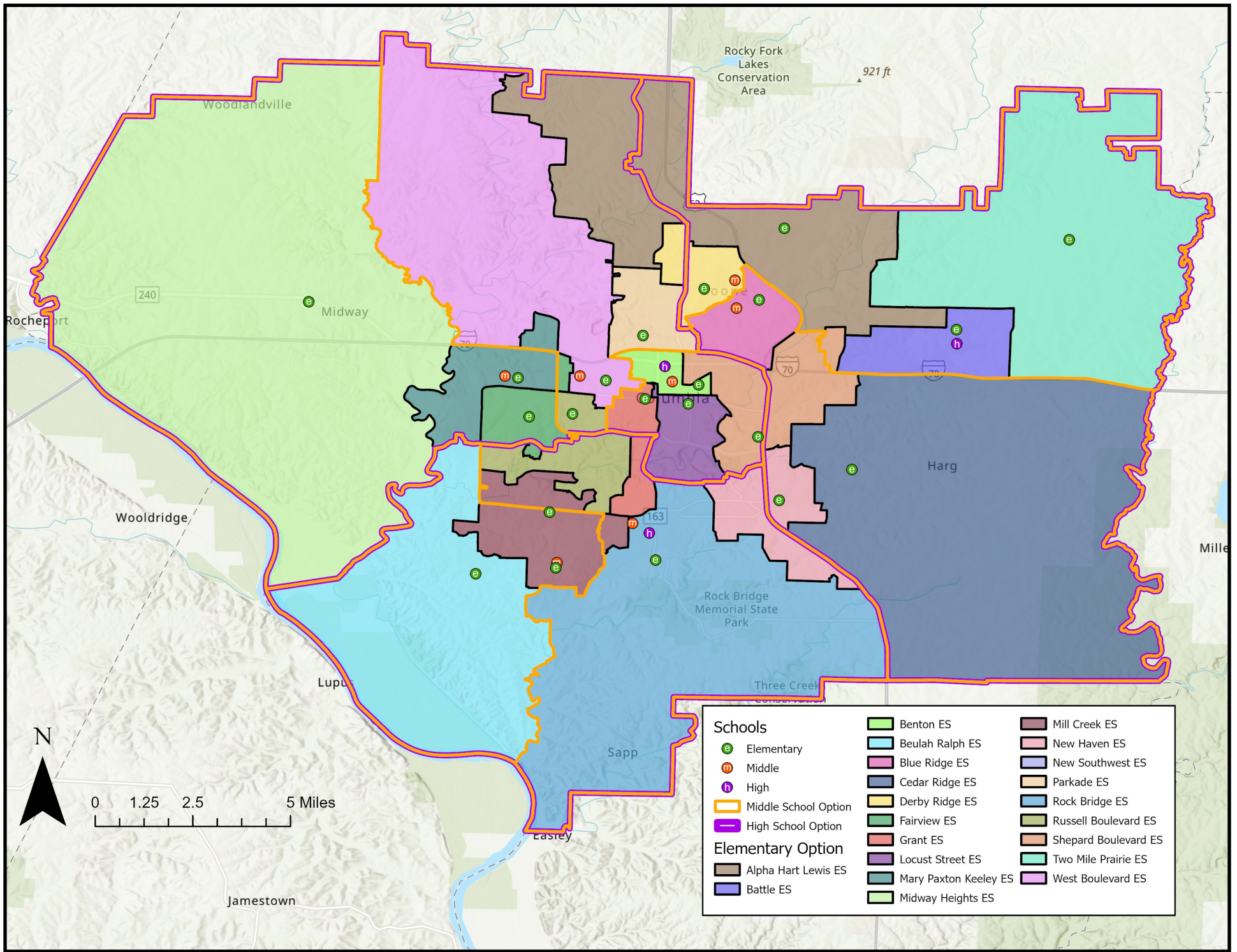


Current: 2023-24 Attendance Areas



Attendance Area	2023-24 Capacity	K-12 Live-In Enrollment	Live-In Utilization	Diversity Index	Low SES %	EL %	IEP %	2028-29 Utilization
Alpha Hart Lewis ES	650	522	80%	2.31	52%	14%	12%	74%
Battle ES	450	377	84%	2.59	67%	9%	15%	88%
Benton ES	260	157	60%	2.76	73%	13%	17%	67%
Beulah Ralph ES	650	669	103%	1.20	16%	6%	9%	88%
Blue Ridge ES	500	493	99%	2.96	72%	20%	12%	110%
Cedar Ridge ES	650	487	75%	1.83	41%	4%	8%	80%
Derby Ridge ES	556	395	71%	2.62	58%	14%	17%	79%
Fairview ES	550	471	86%	1.39	26%	7%	10%	89%
Grant ES	375	335	89%	1.75	36%	10%	8%	95%
Locust Street ES	340	134	39%	2.26	73%	28%	9%	41%
Mary Paxton Keeley ES	723	630	87%	2.01	33%	14%	8%	84%
Midway Heights ES	295	253	86%	1.50	27%	4%	9%	83%
Mill Creek ES	673	588	87%	1.27	17%	7%	7%	85%
New Haven ES	293	280	96%	2.20	59%	21%	14%	97%
Parkade ES	478	431	90%	2.08	52%	15%	10%	87%
Rock Bridge ES	650	566	87%	1.78	37%	12%	9%	84%
Russell Boulevard ES	482	486	101%	1.14	17%	4%	4%	103%
Shepard Boulevard ES	652	551	85%	2.46	61%	15%	12%	81%
Two Mile Prairie ES	195	152	78%	1.86	32%	2%	9%	78%
West Boulevard ES	438	330	75%	2.29	55%	10%	12%	78%
ELEMENTARY SUBTOTAL	10,510	8,307	79%	1.95	43%	11%	10%	79%
Gentry	706	784	111%	1.59	30%	5%	9%	116%
Jefferson	659	334	51%	2.15	47%	9%	10%	55%
John Warner	700	547	78%	1.09	13%	3%	7%	81%
Lange	715	628	88%	2.54	59%	9%	16%	90%
Oakland	675	547	81%	2.42	53%	10%	13%	95%
Smithton	704	512	73%	1.49	25%	9%	10%	80%
West	777	709	91%	2.07	53%	8%	16%	100%
MIDDLE SUBTOTAL	4,936	4,061	82%	1.90	41%	7%	12%	88%
Battle	1,800	1,554	86%	2.49	47%	9%	12%	87%
Hickman	2,125	2,081	98%	1.83	34%	6%	12%	107%
Rock Bridge	1,800	2,029	113%	1.40	18%	3%	7%	120%
HIGH SUBTOTAL	5,725	5,664	99%	1.86	33%	6%	11%	105%
TOTAL	21,171	18,032	85%	1.91	41%	9%	12%	89%

Elementary to Middle Feeders	Gentry	Jefferson	John Warner	Lange	Oakland	Smithton	West
Alpha Hart Lewis ES				60%			40%
Battle ES				100%			
Benton ES		100%					
Beulah Ralph ES			100%				
Blue Ridge ES					100%		
Cedar Ridge ES					100%		
Derby Ridge ES				81%			19%
Fairview ES	1%					89%	10%
Grant ES	47%	53%					
Locust Street ES		100%					
Mary Paxton Keeley ES						73%	27%
Midway Heights ES						100%	
Mill Creek ES	36%		64%				
New Haven ES	82%				18%		
Parkade ES							100%
Rock Bridge ES	100%						
Russell Boulevard ES	66%						34%
Shepard Boulevard ES		34%		28%	39%		
Two Mile Prairie ES				100%			
West Boulevard ES							100%

% of students who move on to middle school together

Middle to High Feeders	Battle	Hickman	Rock Bridge
Gentry			100%
Jefferson (boundary only)		100%	
John Warner			100%
Lange	100%		
Oakland	100%		
Smithton		100%	
West		100%	

% of students who move on to high school together

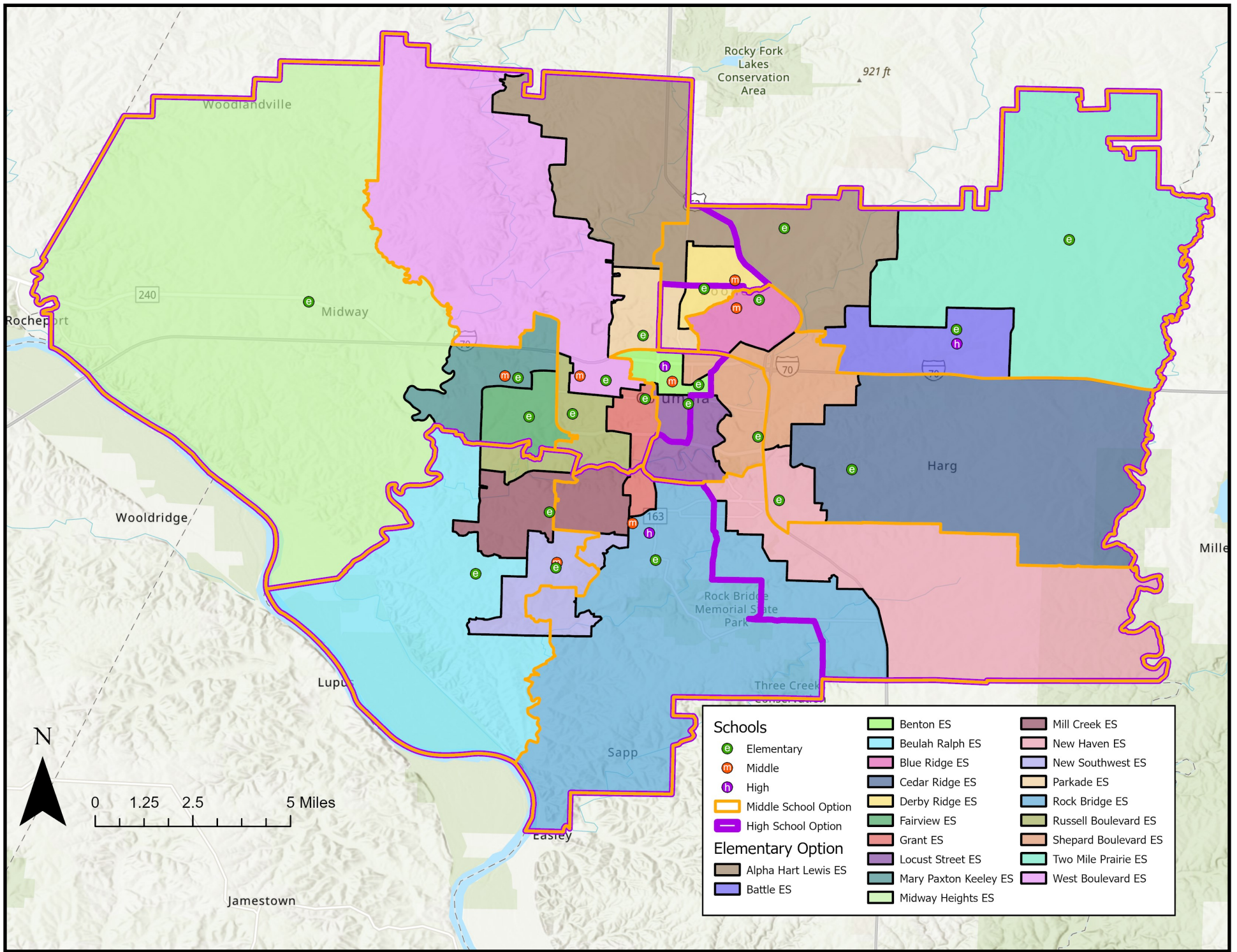
Attend Closest School	
ES	55%
MS	62%
HS	86%

Walkability	
ES	29.0%
MS	17.5%
HS	21.7%

% of students who attend their geographically closest school

% of students that live within the walk zone of their assigned school

Option 1



Attendance Area	2025-26 Capacity	K-12 Live-In Enrollment	Live-In Utilization	Diversity Index	Low SES %	EL %	IEP %	2028-29 Utilization
Alpha Hart Lewis ES	650	549	84%	2.29	55%	15%	14%	80%
Battle ES	650	498	77%	2.63	68%	9%	15%	79%
Benton ES	260	157	60%	2.76	73%	13%	17%	67%
Beulah Ralph ES	650	548	84%	1.26	17%	5%	9%	72%
Blue Ridge ES	500	360	72%	2.94	68%	19%	11%	80%
Cedar Ridge ES	650	473	73%	1.84	41%	4%	8%	78%
Derby Ridge ES	556	359	65%	2.76	58%	14%	17%	72%
Fairview ES	550	440	80%	1.28	23%	7%	9%	79%
Grant ES	375	292	78%	1.86	37%	11%	9%	82%
Locust Street ES	340	134	39%	2.26	73%	28%	9%	41%
Mary Paxton Keeley ES	723	579	80%	2.00	32%	13%	8%	77%
Midway Heights ES	295	253	86%	1.50	27%	4%	9%	83%
Mill Creek ES	673	528	78%	1.17	12%	7%	6%	79%
New Haven ES	293	241	82%	2.20	62%	22%	13%	82%
Parkade ES	478	431	90%	2.08	52%	15%	10%	87%
Rock Bridge ES	650	472	73%	2.05	42%	13%	10%	71%
Russell Boulevard ES	650	447	69%	1.39	27%	6%	7%	72%
Shepard Boulevard ES	652	562	86%	2.48	62%	18%	11%	85%
Two Mile Prairie ES	195	162	83%	1.86	32%	2%	9%	84%
West Boulevard ES	438	317	72%	2.35	56%	11%	12%	75%
New Southwest ES	650	505	78%	1.16	22%	8%	8%	73%
ELEMENTARY SUBTOTAL	10,878	8,307	76%	1.95	43%	11%	10%	76%
Gentry	706	671	95%	1.63	32%	5%	9%	99%
Jefferson	659	236	36%	2.35	55%	11%	12%	41%
John Warner	700	654	93%	1.14	14%	3%	7%	98%
Lange	715	691	97%	2.49	60%	9%	16%	96%
Oakland	675	559	83%	2.46	55%	10%	13%	96%
Smithton	704	583	83%	1.67	29%	9%	11%	92%
West	777	667	86%	1.88	47%	7%	14%	94%
MIDDLE SUBTOTAL	4,936	4,061	82%	1.90	41%	7%	12%	88%
Battle	1,800	1,739	97%	2.34	44%	10%	12%	104%
Hickman	2,125	2,116	100%	1.91	35%	6%	12%	104%
Rock Bridge	1,800	1,809	101%	1.34	16%	3%	7%	106%
HIGH SUBTOTAL	5,725	5,664	99%	1.86	33%	6%	11%	105%
TOTAL	21,539	18,032	84%	1.91	41%	9%	12%	89%

Elementary to Middle Feeders	Gentry	Jefferson	John Warner	Lange	Oakland	Smithton	West
Alpha Hart Lewis ES				55%			45%
Battle ES				100%			
Benton ES		100%					
Beulah Ralph ES			100%				
Blue Ridge ES					100%		
Cedar Ridge ES					100%		
Derby Ridge ES				100%			
Fairview ES						100%	
Grant ES	39%						61%
Locust Street ES		100%					
Mary Paxton Keeley ES						100%	
Midway Heights ES						100%	
Mill Creek ES	42%		58%				
New Haven ES	79%				21%		
Parkade ES				23%			77%
Rock Bridge ES	100%						
Russell Boulevard ES			38%				62%
Shepard Boulevard ES		34%			66%		
Two Mile Prairie ES				100%			
West Boulevard ES							100%
New Southwest ES	55%		45%				

Middle to High Feeders	Battle	Hickman	Rock Bridge
Gentry	21%		79%
Jefferson (boundary only)	53%	47%	
John Warner			100%
Lange	75%	25%	
Oakland	100%		
Smithton		100%	
West		100%	

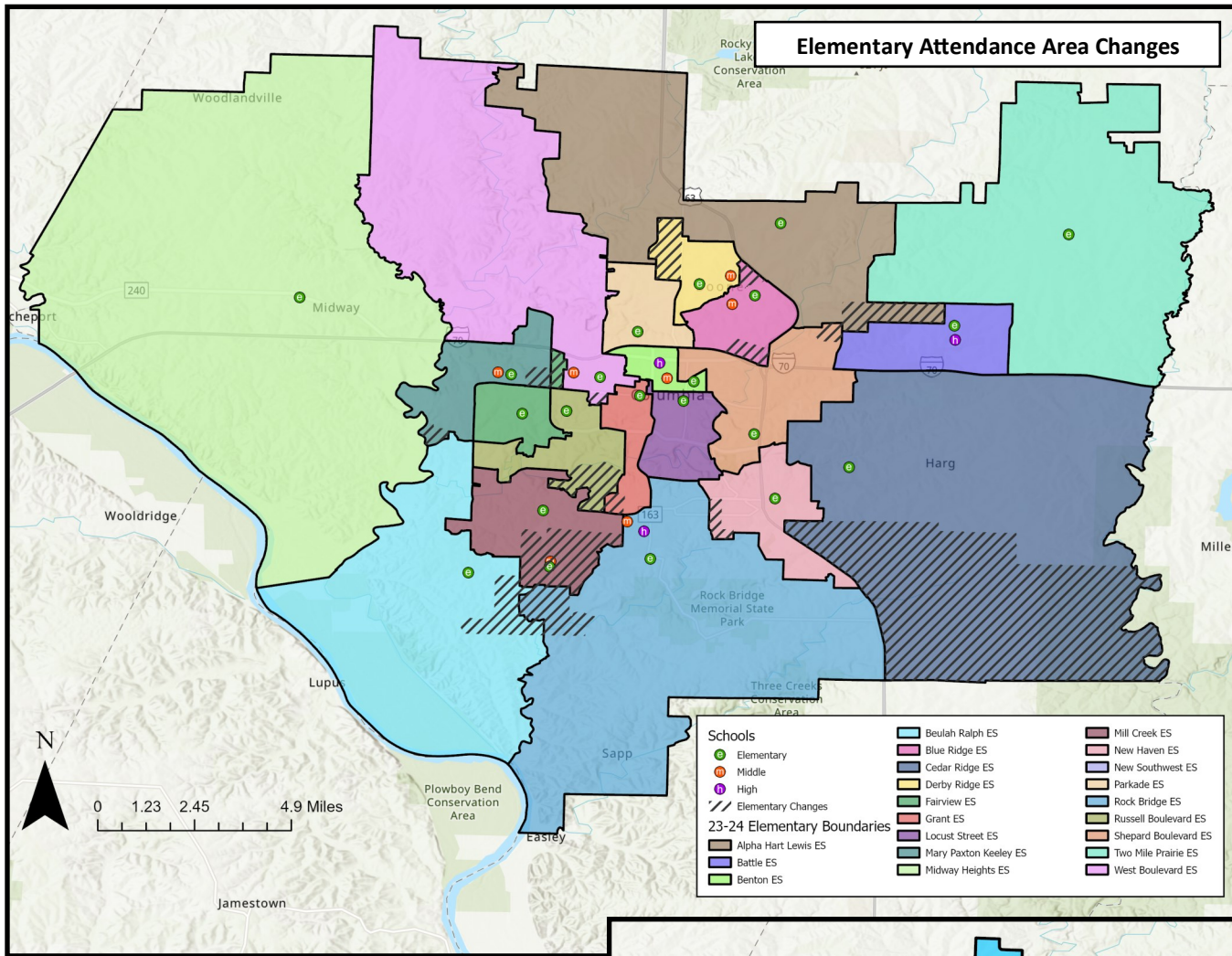
Students Moved		
ES	1,180	14%
MS	571	14%
HS	677	12%

Attend Closest School	
ES	55%
MS	63%
HS	84%

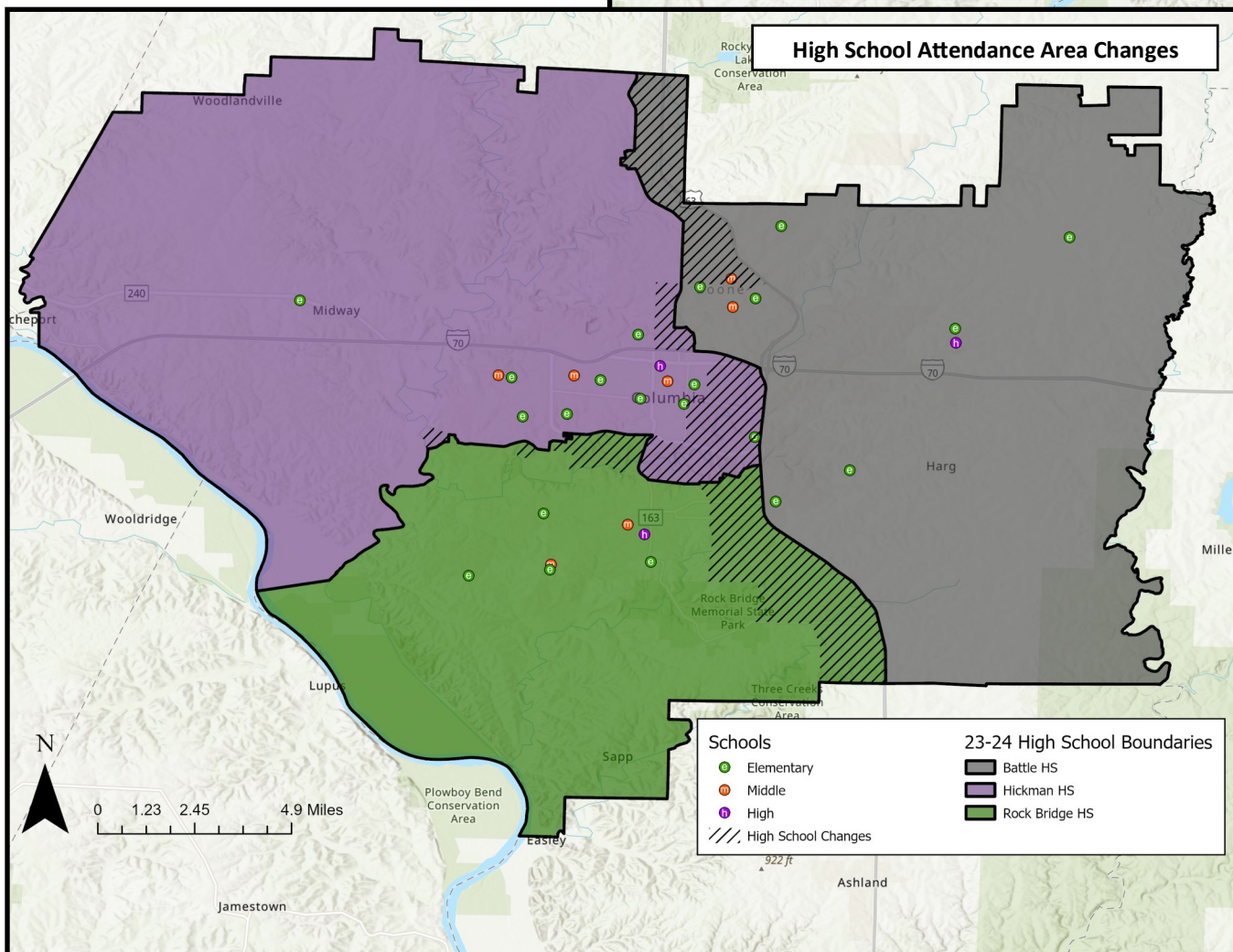
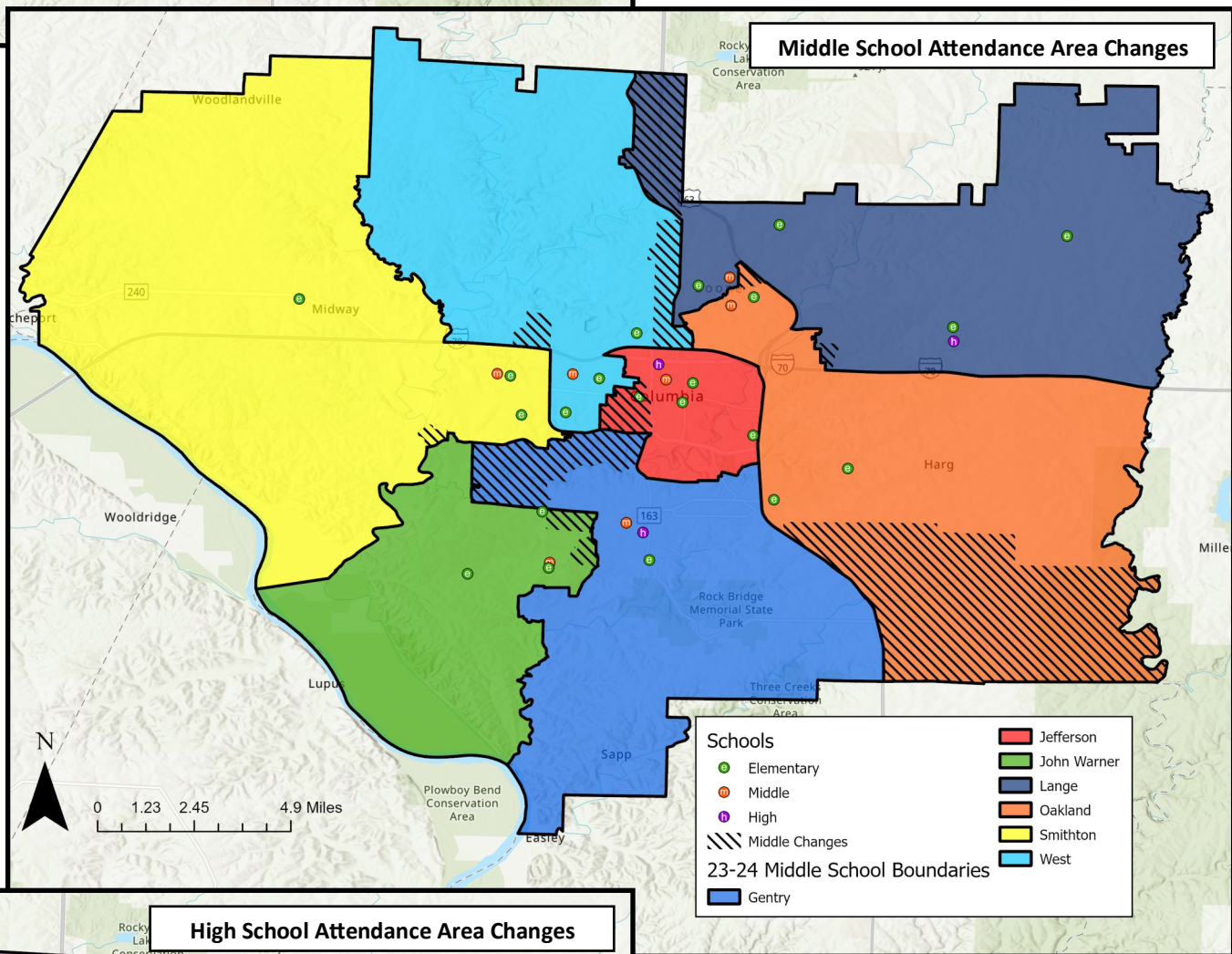
Walkability	
ES	34.5%
MS	17.2%
HS	20.6%

Map & metrics represent end state for each option (incorporates phase 2 and phase 3 changes). Please refer to the attendance area locator or presentation to review the changes associated with each phase. Note: All secondary changes will occur in Phase 2 (2025-26).

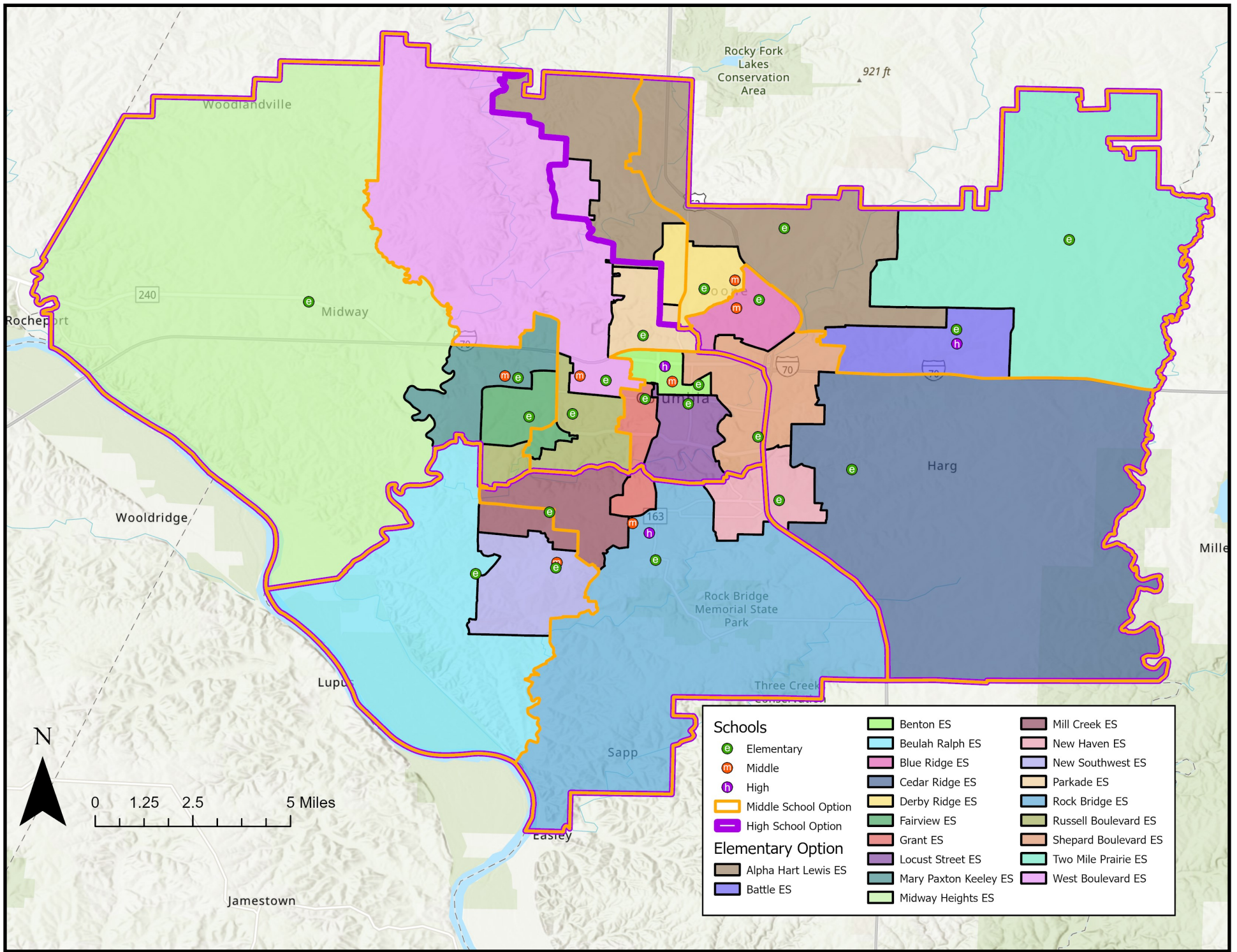
Option 1: Areas of Change



The hashed areas on each map indicate the geographic areas that would be changing in this option, overlaid onto the current (2023-24) attendance areas for each level.



Option 2



Attendance Area	2025-26 Capacity	K-12 Live-In Enrollment	Live-In Utilization	Diversity Index	Low SES %	EL %	IEP %	2028-29 Utilization
Alpha Hart Lewis ES	650	504	78%	2.32	52%	14%	13%	72%
Battle ES	650	475	73%	2.66	71%	9%	15%	75%
Benton ES	260	157	60%	2.76	73%	13%	17%	67%
Beulah Ralph ES	650	539	83%	1.25	17%	5%	9%	71%
Blue Ridge ES	500	388	78%	2.94	69%	19%	12%	87%
Cedar Ridge ES	650	523	80%	1.84	41%	5%	7%	85%
Derby Ridge ES	556	439	79%	2.55	56%	15%	17%	87%
Fairview ES	550	440	80%	1.28	23%	7%	9%	79%
Grant ES	375	304	81%	1.82	40%	11%	9%	87%
Locust Street ES	340	134	39%	2.26	73%	28%	9%	41%
Mary Paxton Keeley ES	723	602	83%	1.97	31%	13%	8%	81%
Midway Heights ES	295	253	86%	1.50	27%	4%	9%	83%
Mill Creek ES	673	522	78%	1.28	21%	7%	5%	77%
New Haven ES	293	216	74%	2.26	55%	20%	13%	73%
Parkade ES	478	387	81%	2.09	53%	13%	10%	78%
Rock Bridge ES	650	459	71%	2.04	46%	13%	11%	69%
Russell Boulevard ES	650	501	77%	1.39	24%	6%	7%	80%
Shepard Boulevard ES	652	529	81%	2.51	63%	18%	12%	81%
Two Mile Prairie ES	195	152	78%	1.86	32%	2%	9%	78%
West Boulevard ES	438	328	75%	2.34	56%	10%	12%	77%
New Southwest ES	650	455	70%	1.06	13%	10%	8%	65%
ELEMENTARY SUBTOTAL	10,878	8,307	76%	1.95	43%	11%	10%	76%
Gentry	706	620	88%	1.67	33%	5%	8%	93%
Jefferson	659	314	48%	2.22	50%	9%	11%	52%
John Warner	700	597	85%	1.10	15%	4%	9%	87%
Lange	715	600	84%	2.52	59%	9%	15%	85%
Oakland	675	575	85%	2.45	54%	10%	13%	99%
Smithton	704	630	89%	1.68	27%	8%	10%	100%
West	777	725	93%	1.85	49%	7%	15%	100%
MIDDLE SUBTOTAL	4,936	4,061	82%	1.90	41%	7%	12%	88%
Battle	1,800	1,801	100%	2.42	47%	9%	12%	102%
Hickman	2,125	2,034	96%	1.77	30%	5%	11%	104%
Rock Bridge	1,800	1,829	102%	1.40	20%	4%	7%	109%
HIGH SUBTOTAL	5,725	5,664	99%	1.86	33%	6%	11%	105%
TOTAL	21,539	18,032	84%	1.91	41%	9%	12%	89%

Elementary to Middle Feeders	Gentry	Jefferson	John Warner	Lange	Oakland	Smithton	West
Alpha Hart Lewis ES				60%			40%
Battle ES				100%			
Benton ES		100%					
Beulah Ralph ES			100%				
Blue Ridge ES					100%		
Cedar Ridge ES					100%		
Derby Ridge ES				71%			29%
Fairview ES						86%	14%
Grant ES	53%	47%					
Locust Street ES		100%					
Mary Paxton Keeley ES						100%	
Midway Heights ES						100%	
Mill Creek ES	78%		22%				
New Haven ES	77%				23%		
Parkade ES							100%
Rock Bridge ES	100%						
Russell Boulevard ES						25%	75%
Shepard Boulevard ES		36%			64%		
Two Mile Prairie ES				100%			
West Boulevard ES							100%
New Southwest ES			100%				

Middle to High Feeders	Battle	Hickman	Rock Bridge
Gentry			100%
Jefferson (boundary only)		100%	
John Warner			100%
Lange	100%		
Oakland	100%		
Smithton		100%	
West	23%	77%	

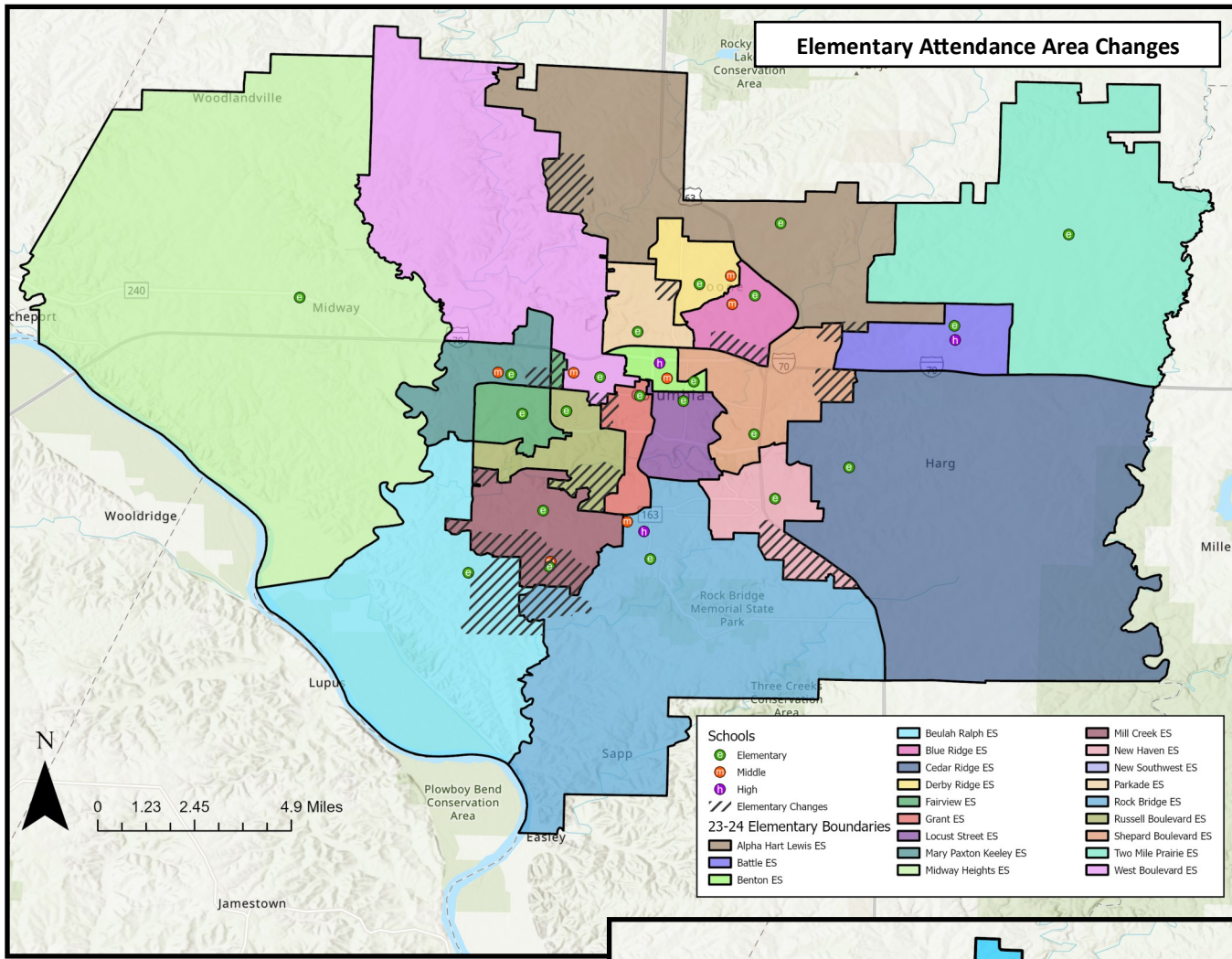
Students Moved		
ES	1,109	13%
MS	438	11%
HS	447	8%

Attend Closest School	
ES	57%
MS	66%
HS	79%

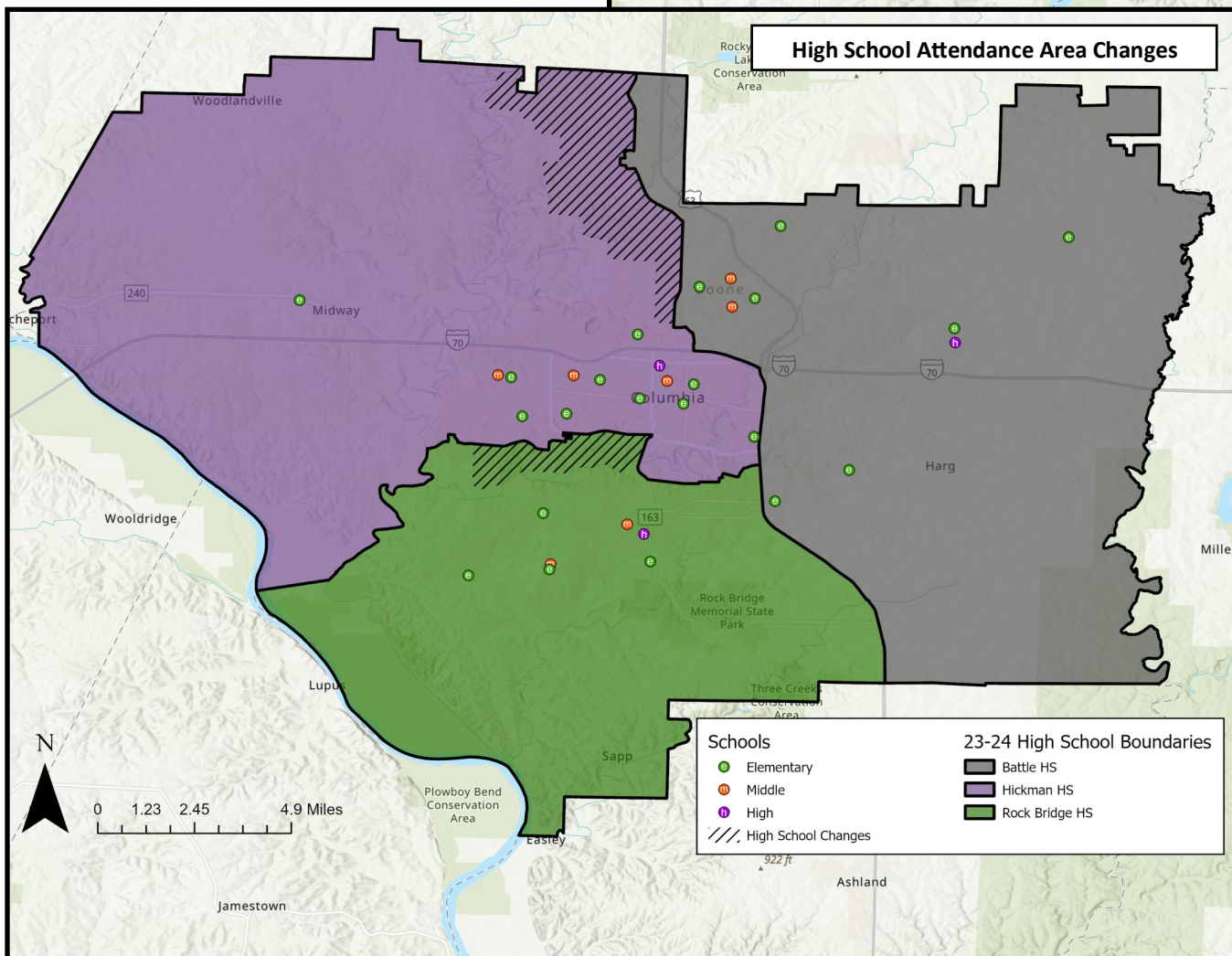
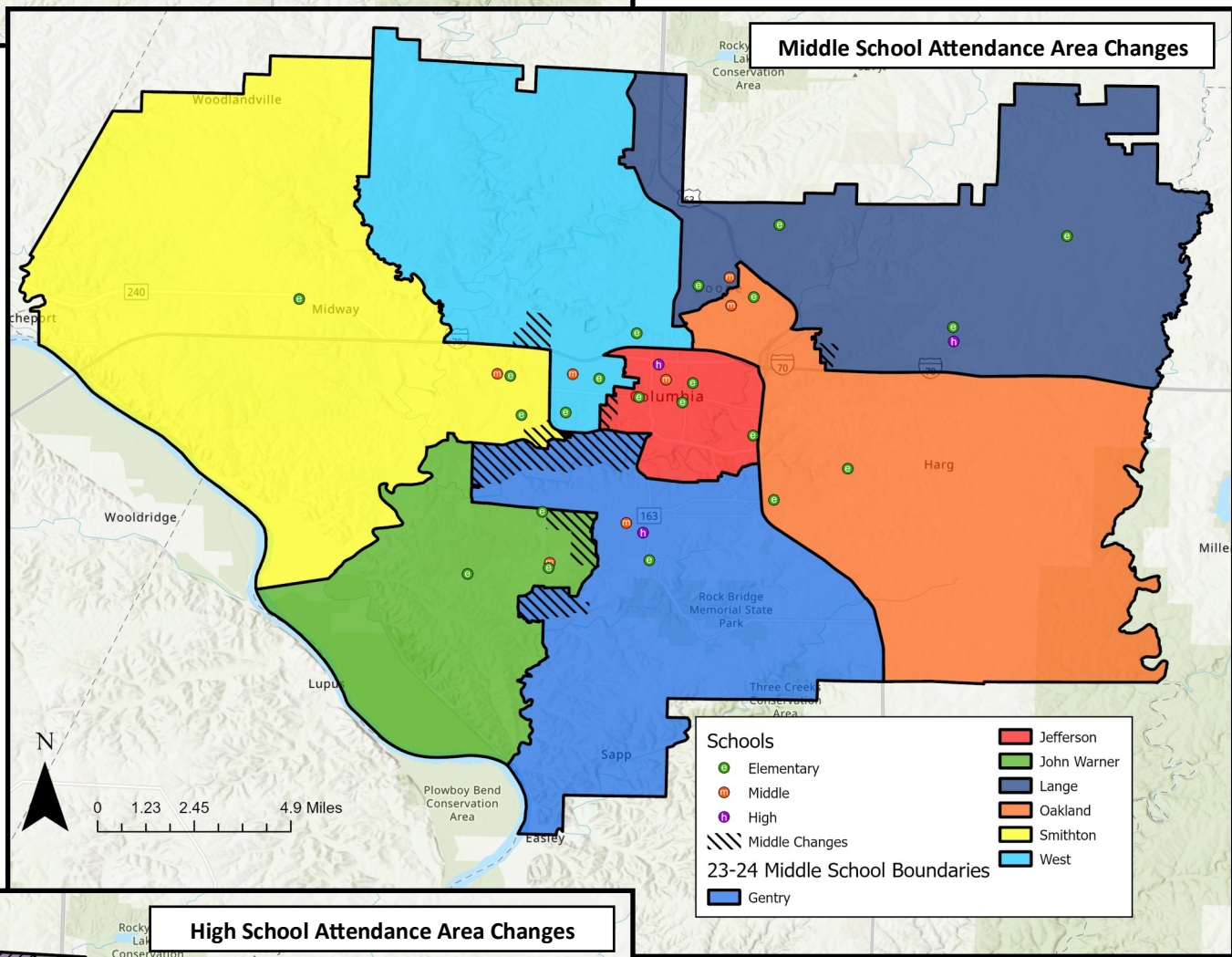
Walkability	
ES	34.3%
MS	18.0%
HS	21.7%

Map & metrics represent end state for each option (incorporates phase 2 and phase 3 changes). Please refer to the attendance area locator or presentation to review the changes associated with each phase. Note: All secondary changes will occur in Phase 2 (2025-26).

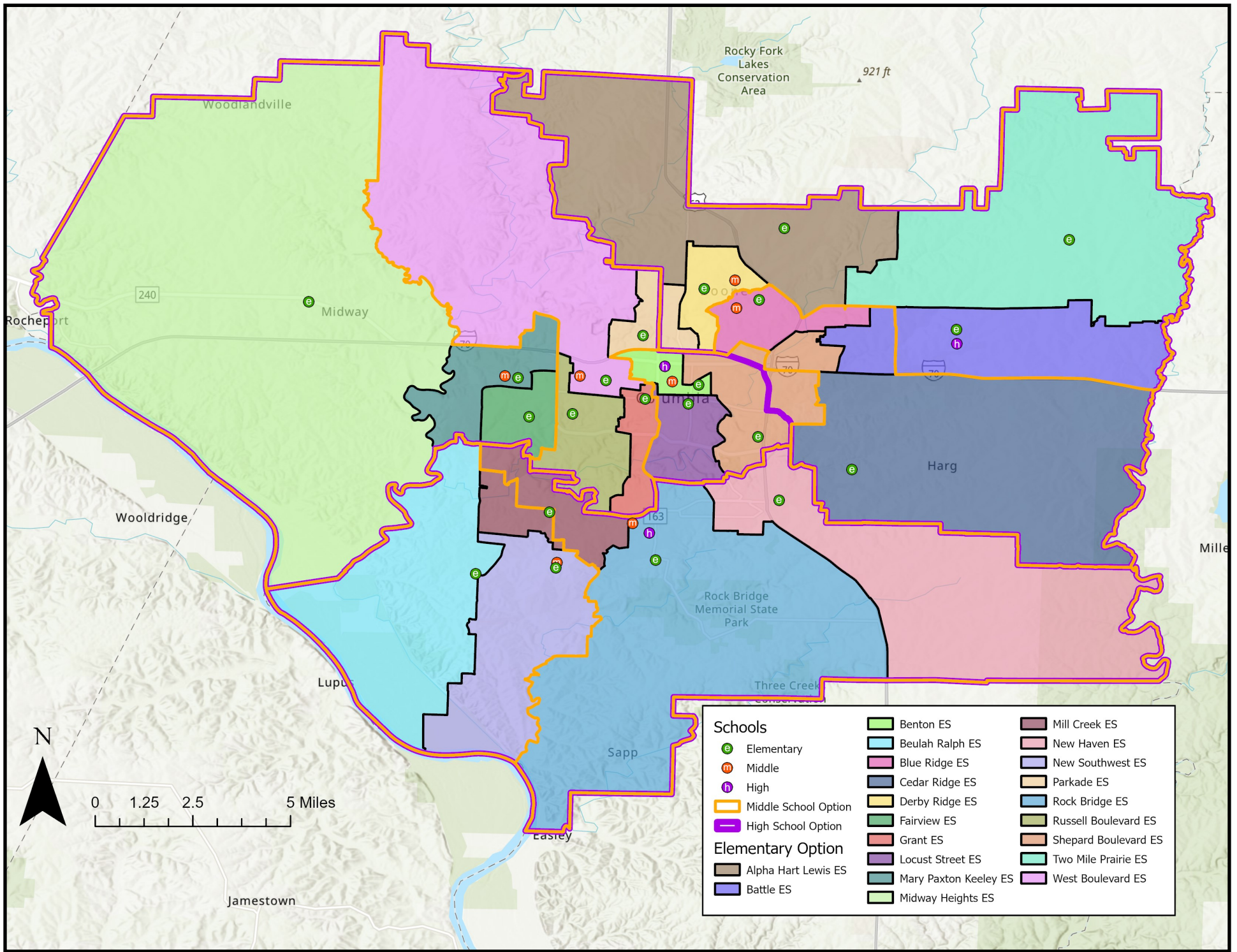
Option 2: Areas of Change



The hashed areas on each map indicate the geographic areas that would be changing in this option, overlaid onto the current (2023-24) attendance areas for each level.



Option 3



Attendance Area	2025-26 Capacity	K-12 Live-In Enrollment	Live-In Utilization	Diversity Index	Low SES %	EL %	IEP %	2028-29 Utilization
Alpha Hart Lewis ES	650	508	78%	2.24	57%	15%	15%	74%
Battle ES	650	507	78%	2.59	69%	8%	15%	80%
Benton ES	260	157	60%	2.76	73%	13%	17%	67%
Beulah Ralph ES	650	534	82%	1.26	17%	5%	9%	71%
Blue Ridge ES	500	333	67%	2.86	64%	14%	11%	73%
Cedar Ridge ES	650	509	78%	1.85	41%	5%	7%	83%
Derby Ridge ES	556	429	77%	2.80	59%	17%	16%	86%
Fairview ES	550	440	80%	1.28	23%	7%	9%	79%
Grant ES	375	304	81%	1.82	40%	11%	9%	87%
Locust Street ES	340	134	39%	2.26	73%	28%	9%	41%
Mary Paxton Keeley ES	723	602	83%	1.97	31%	13%	8%	81%
Midway Heights ES	295	253	86%	1.50	27%	4%	9%	83%
Mill Creek ES	673	524	78%	1.41	20%	7%	7%	77%
New Haven ES	293	214	73%	2.23	58%	20%	13%	72%
Parkade ES	478	382	80%	2.09	58%	15%	11%	77%
Rock Bridge ES	650	468	72%	2.06	45%	13%	10%	71%
Russell Boulevard ES	650	499	77%	1.26	25%	6%	6%	80%
Shepard Boulevard ES	652	526	81%	2.51	63%	18%	12%	81%
Two Mile Prairie ES	195	151	77%	2.08	29%	3%	9%	78%
West Boulevard ES	438	366	84%	2.30	49%	10%	11%	85%
New Southwest ES	650	467	72%	1.06	13%	10%	8%	67%
ELEMENTARY SUBTOTAL	10,878	8,307	76%	1.95	43%	11%	10%	76%
Gentry	706	576	82%	1.76	33%	7%	8%	89%
Jefferson	659	316	48%	2.41	58%	10%	13%	55%
John Warner	700	599	86%	1.13	15%	3%	9%	87%
Lange	715	643	90%	2.41	59%	9%	16%	93%
Oakland	675	623	92%	2.41	54%	7%	13%	99%
Smithton	704	601	85%	1.65	28%	9%	11%	95%
West	777	703	90%	1.73	40%	7%	13%	98%
MIDDLE SUBTOTAL	4,936	4,061	82%	1.90	41%	7%	12%	88%
Battle	1,800	1,788	99%	2.43	47%	9%	12%	101%
Hickman	2,125	2,083	98%	1.72	30%	5%	11%	105%
Rock Bridge	1,800	1,793	100%	1.45	19%	4%	7%	108%
HIGH SUBTOTAL	5,725	5,664	99%	1.86	33%	6%	11%	105%
TOTAL	21,539	18,032	84%	1.91	41%	9%	12%	89%

Elementary to Middle Feeders	Gentry	Jefferson	John Warner	Lange	Oakland	Smithton	West
Alpha Hart Lewis ES				100%			
Battle ES				29%	71%		
Benton ES		100%					
Beulah Ralph ES			100%				
Blue Ridge ES					100%		
Cedar Ridge ES					100%		
Derby Ridge ES				100%			
Fairview ES						100%	
Grant ES							100%
Locust Street ES		100%					
Mary Paxton Keeley ES						100%	
Midway Heights ES						100%	
Mill Creek ES	77%		23%				
New Haven ES	100%						
Parkade ES				25%			75%
Rock Bridge ES	100%						
Russell Boulevard ES							100%
Shepard Boulevard ES		72%			28%		
Two Mile Prairie ES				100%			
West Boulevard ES							100%
New Southwest ES			100%				

Middle to High Feeders	Battle	Hickman	Rock Bridge
Gentry			100%
Jefferson (boundary only)	27%	73%	
John Warner			100%
Lange	100%		
Oakland	100%		
Smithton		100%	
West		100%	

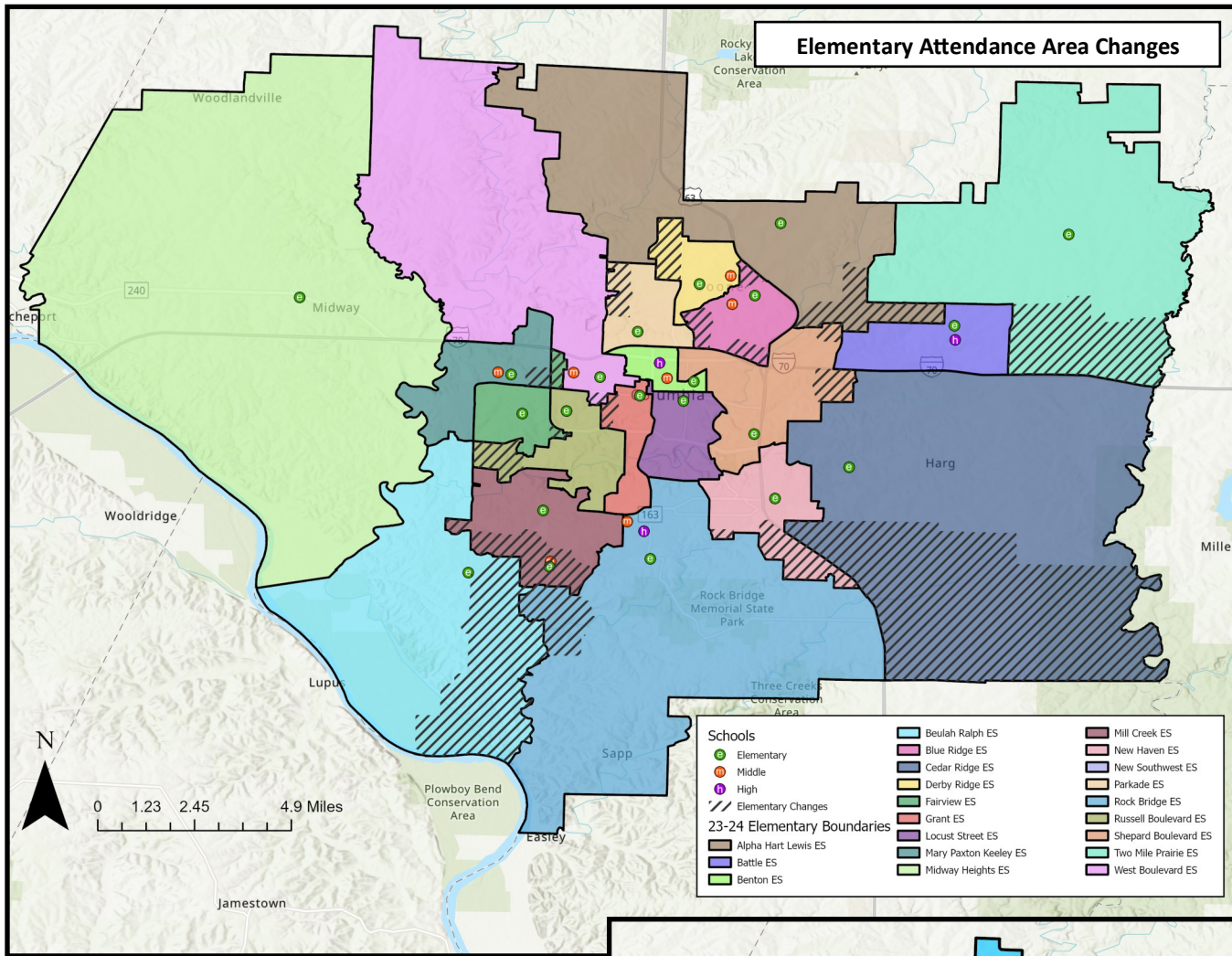
Students Moved		
ES	1,362	16%
MS	1,160	29%
HS	588	10%

Attend Closest School	
ES	54%
MS	68%
HS	78%

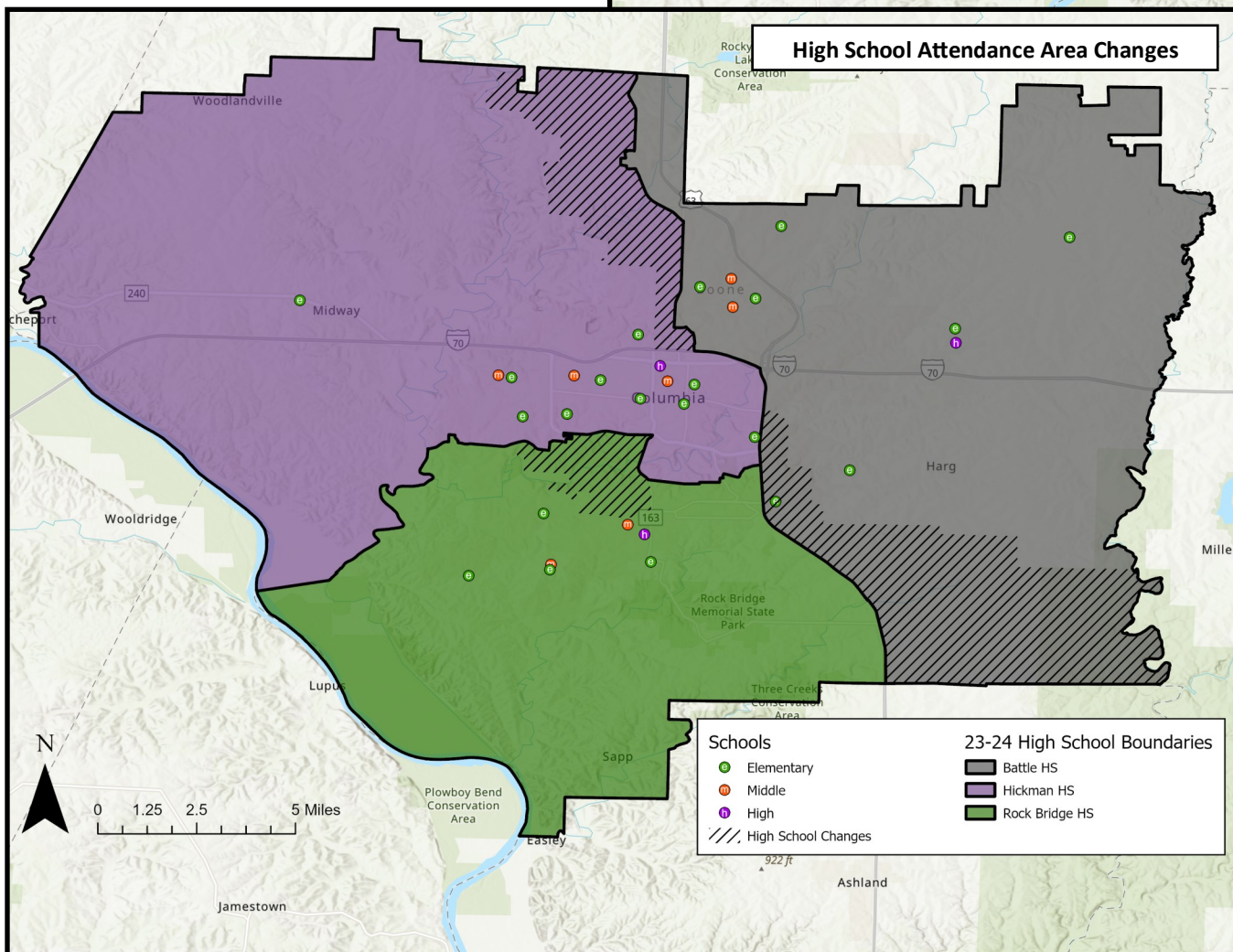
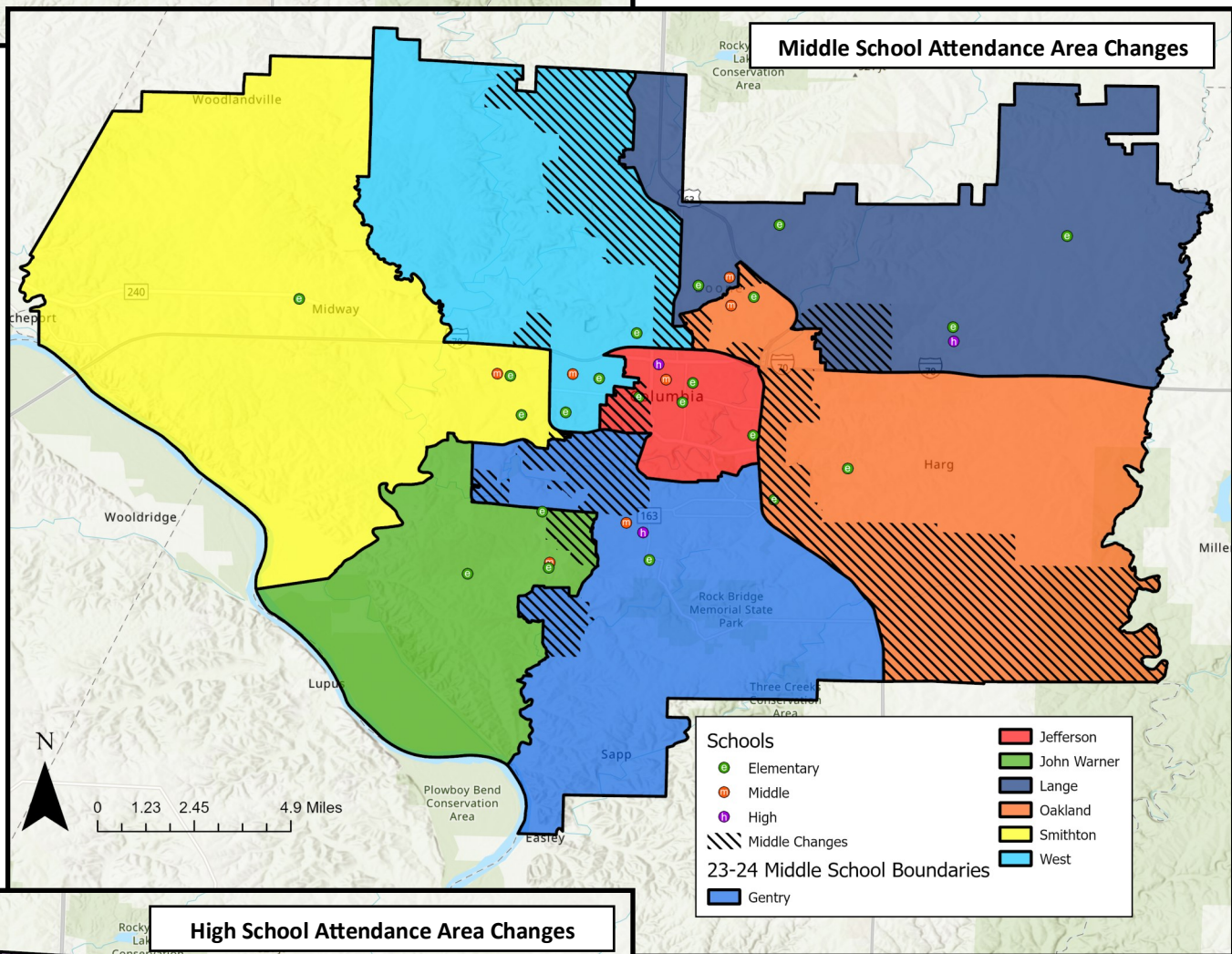
Walkability	
ES	33.8%
MS	16.0%
HS	19.1%

Map & metrics represent end state for each option (incorporates phase 2 and phase 3 changes). Please refer to the attendance area locator or presentation to review the changes associated with each phase. Note: All secondary changes will occur in Phase 2 (2025-26).

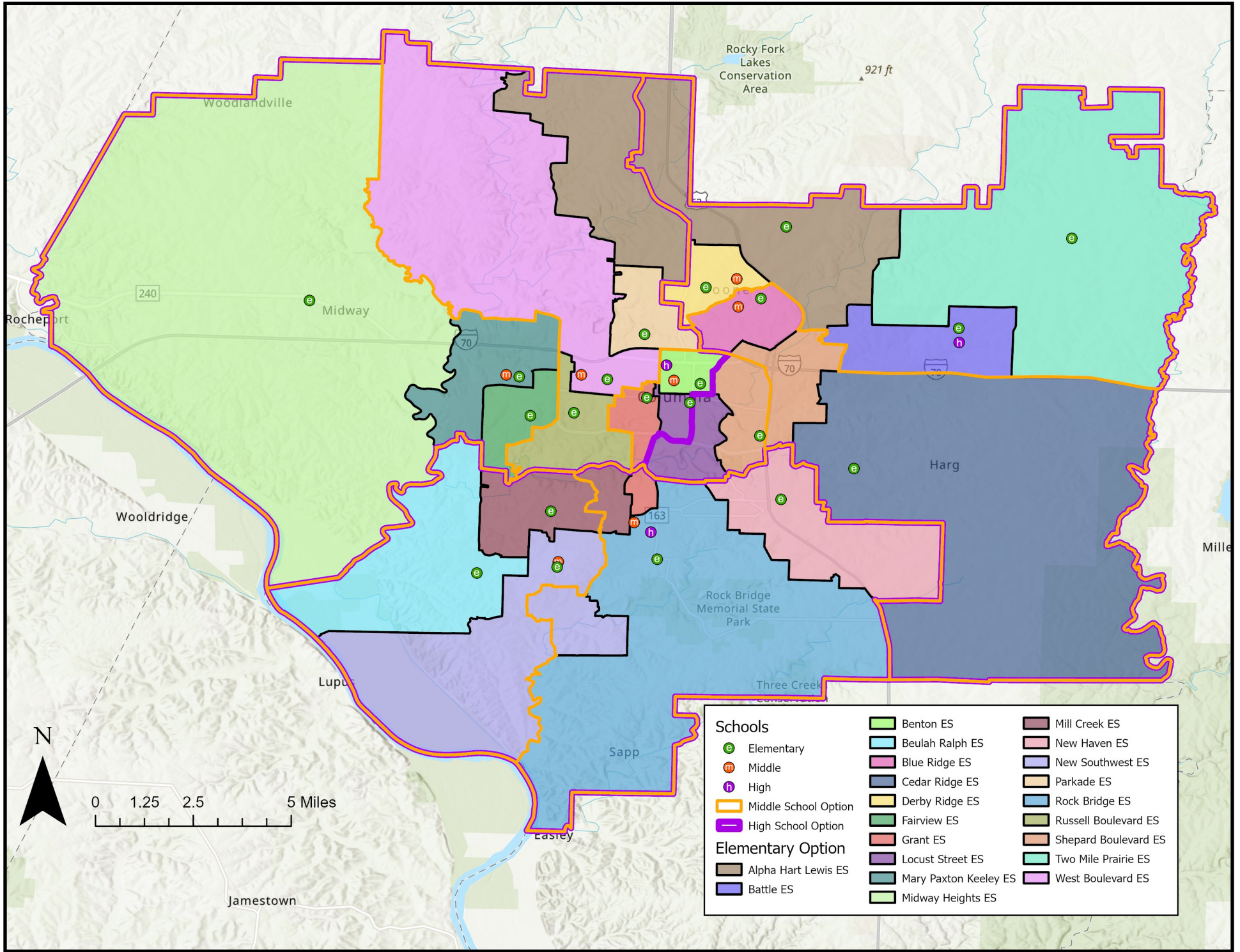
Option 3: Areas of Change



The hashed areas on each map indicate the geographic areas that would be changing in this option, overlaid onto the current (2023-24) attendance areas for each level.



Option 4



Attendance Area	2025-26 Capacity	K-12 Live-In Enrollment	Live-In Utilization	Diversity Index	Low SES %	EL %	IEP %	2028-29 Utilization
Alpha Hart Lewis ES	650	549	84%	2.29	55%	15%	14%	80%
Battle ES	650	498	77%	2.63	68%	9%	15%	79%
Benton ES	260	117	45%	2.50	76%	17%	17%	50%
Beulah Ralph ES	650	551	85%	1.25	16%	5%	9%	73%
Blue Ridge ES	500	360	72%	2.94	68%	19%	11%	80%
Cedar Ridge ES	650	516	79%	1.84	41%	5%	8%	84%
Derby Ridge ES	556	403	72%	2.68	57%	15%	16%	79%
Fairview ES	550	429	78%	1.41	23%	7%	9%	78%
Grant ES	375	292	78%	1.86	37%	11%	9%	82%
Locust Street ES	340	134	39%	2.26	73%	28%	9%	41%
Mary Paxton Keeley ES	723	629	87%	2.00	33%	13%	8%	84%
Midway Heights ES	295	253	86%	1.50	27%	4%	9%	83%
Mill Creek ES	673	497	74%	1.18	12%	7%	6%	75%
New Haven ES	293	234	80%	2.24	63%	23%	13%	80%
Parkade ES	478	387	81%	2.09	53%	13%	10%	78%
Rock Bridge ES	650	512	79%	2.07	47%	11%	11%	77%
Russell Boulevard ES	650	458	70%	1.26	26%	6%	7%	73%
Shepard Boulevard ES	652	504	77%	2.53	63%	18%	12%	77%
Two Mile Prairie ES	195	162	83%	1.86	32%	2%	9%	84%
West Boulevard ES	438	352	80%	2.43	56%	11%	12%	84%
New Southwest ES	650	470	72%	1.06	14%	10%	7%	68%
ELEMENTARY SUBTOTAL	10,878	8,307	76%	1.95	43%	11%	10%	76%
Gentry	706	638	90%	1.73	36%	7%	10%	96%
Jefferson	659	303	46%	2.06	44%	9%	10%	50%
John Warner	700	610	87%	1.10	13%	3%	7%	91%
Lange	715	634	89%	2.51	58%	9%	15%	91%
Oakland	675	543	80%	2.42	53%	8%	13%	92%
Smithton	704	616	88%	1.70	28%	9%	10%	98%
West	777	717	92%	1.89	51%	7%	16%	99%
MIDDLE SUBTOTAL	4,936	4,061	82%	1.90	41%	7%	12%	88%
Battle	1,800	1,694	94%	2.44	45%	9%	12%	99%
Hickman	2,125	2,085	98%	1.78	32%	5%	11%	103%
Rock Bridge	1,800	1,885	105%	1.43	20%	4%	7%	113%
HIGH SUBTOTAL	5,725	5,664	99%	1.86	33%	6%	11%	105%
TOTAL	21,539	18,032	84%	1.91	41%	9%	12%	89%

Elementary to Middle Feeders	Gentry	Jefferson	John Warner	Lange	Oakland	Smithton	West
Alpha Hart Lewis ES				48%			52%
Battle ES				100%			
Benton ES		100%					
Beulah Ralph ES			100%				
Blue Ridge ES					100%		
Cedar Ridge ES					100%		
Derby Ridge ES				100%			
Fairview ES						100%	
Grant ES	39%	61%					
Locust Street ES		100%					
Mary Paxton Keeley ES						100%	
Midway Heights ES						100%	
Mill Creek ES	36%		64%				
New Haven ES	100%						
Parkade ES							100%
Rock Bridge ES	100%						
Russell Boulevard ES							100%
Shepard Boulevard ES		33%			67%		
Two Mile Prairie ES				100%			
West Boulevard ES							100%
New Southwest ES	42%		58%				

Middle to High Feeders	Battle	Hickman	Rock Bridge
Gentry			100%
Jefferson (boundary only)	44%	56%	
John Warner			100%
Lange	100%		
Oakland	100%		
Smithton		100%	
West		100%	

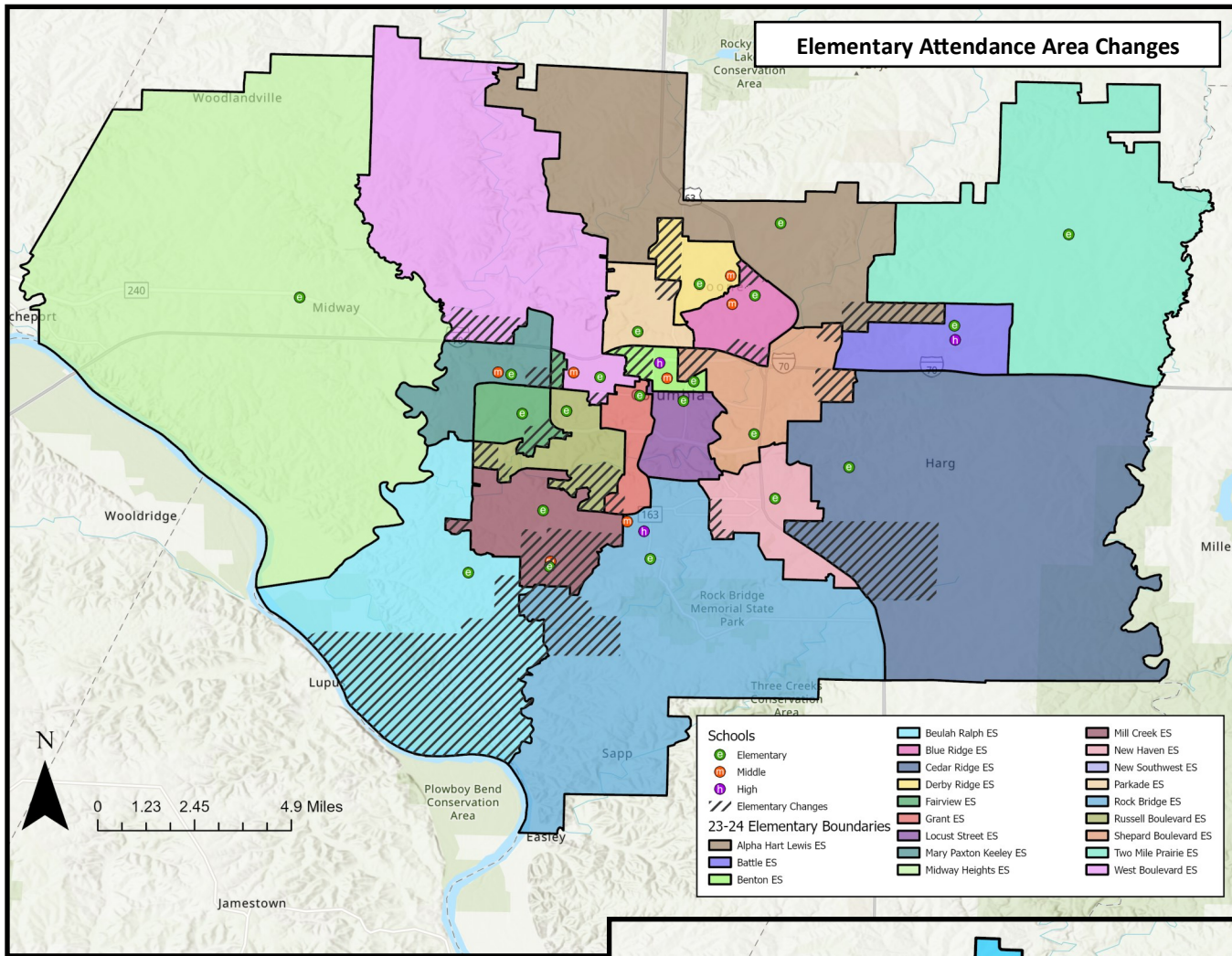
Students Moved		
ES	1,543	19%
MS	390	10%
HS	368	6%

Attend Closest School	
ES	57%
MS	62%
HS	82%

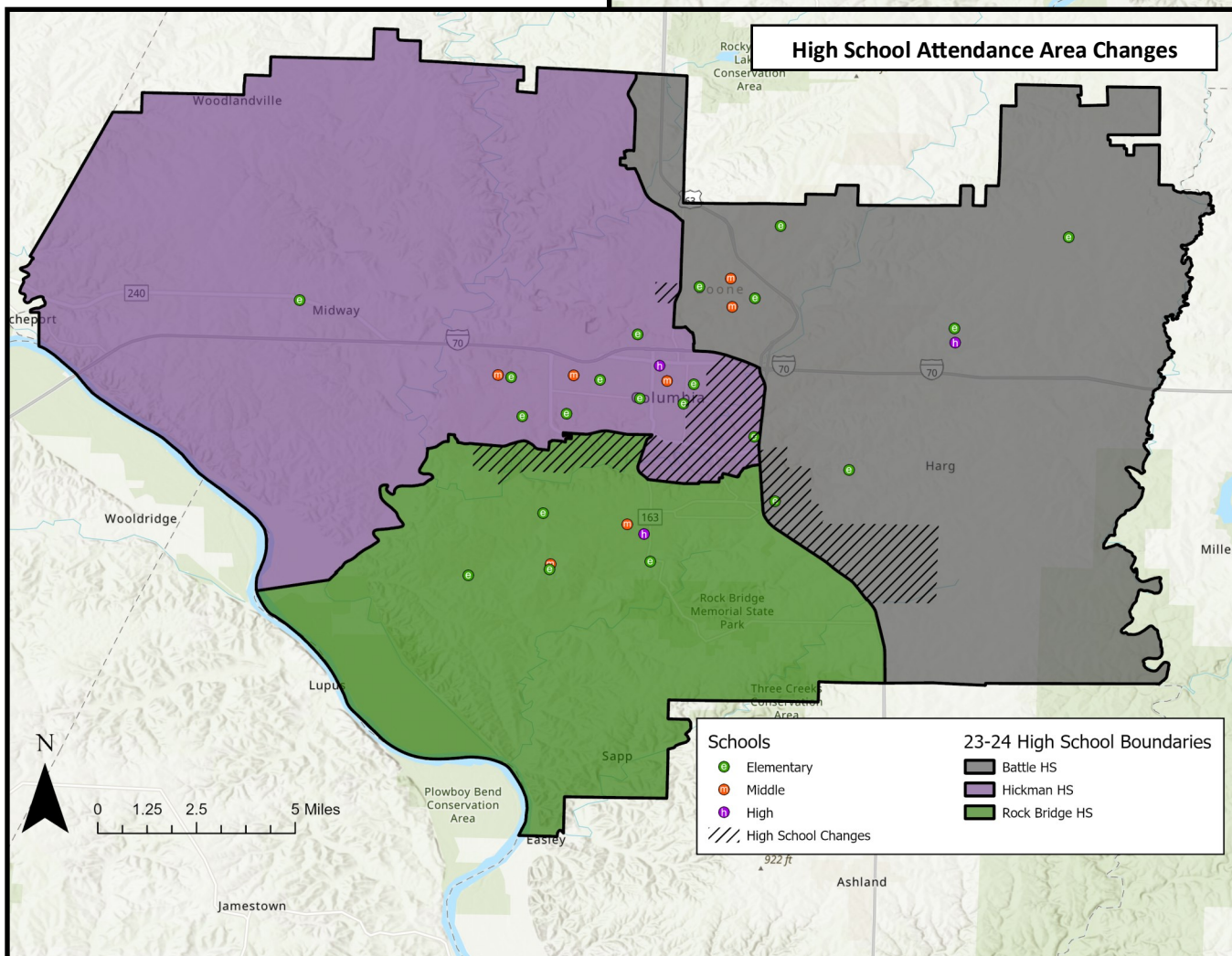
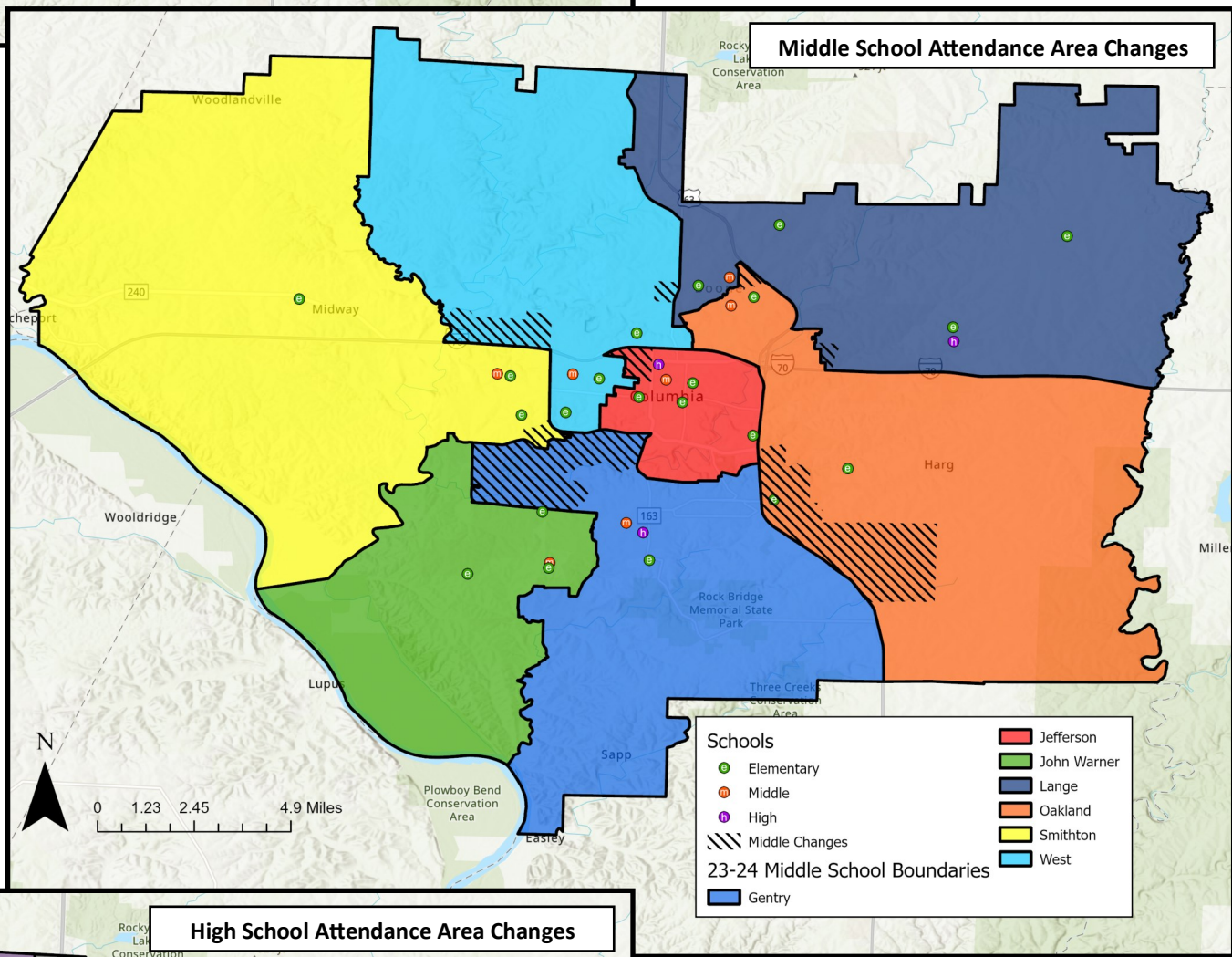
Walkability	
ES	34.6%
MS	16.9%
HS	21.2%

Map & metrics represent end state for each option (incorporates phase 2 and phase 3 changes). Please refer to the attendance area locator or presentation to review the changes associated with each phase. Note: All secondary changes will occur in Phase 2 (2025-26).

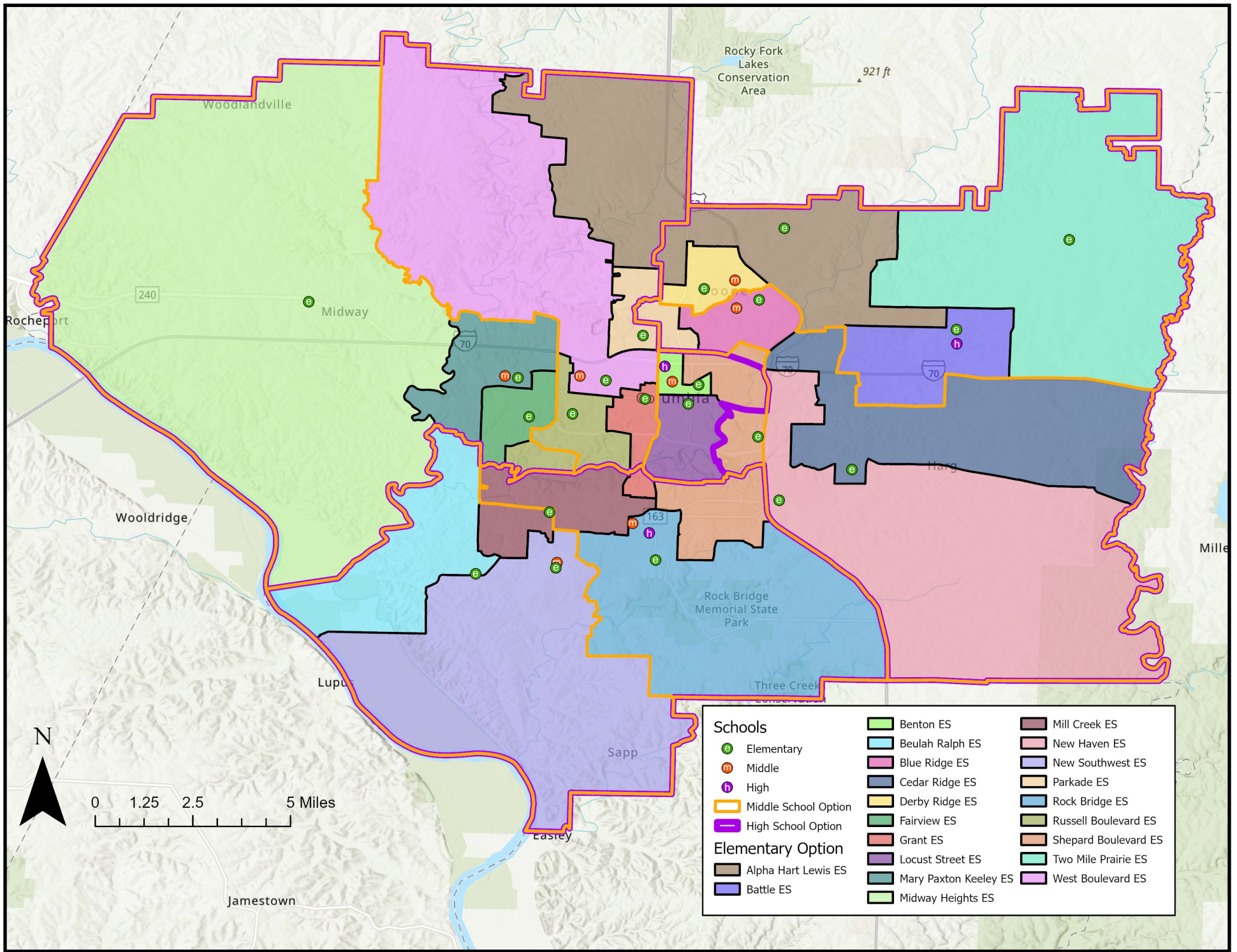
Option 4: Areas of Change



The hashed areas on each map indicate the geographic areas that would be changing in this option, overlaid onto the current (2023-24) attendance areas for each level.



Option 5



Attendance Area	2025-26 Capacity	K-12 Live-In Enrollment	Live-In Utilization	Diversity Index	Low SES %	EL %	IEP %	2028-29 Utilization
Alpha Hart Lewis ES	650	582	90%	2.28	53%	14%	13%	85%
Battle ES	650	511	79%	2.43	66%	8%	13%	83%
Benton ES	260	95	37%	2.61	77%	17%	19%	41%
Beulah Ralph ES	650	548	84%	1.26	16%	5%	9%	73%
Blue Ridge ES	500	374	75%	2.93	69%	19%	13%	83%
Cedar Ridge ES	650	575	88%	2.27	54%	9%	11%	88%
Derby Ridge ES	556	389	70%	2.68	56%	15%	15%	77%
Fairview ES	550	418	76%	1.40	23%	7%	9%	76%
Grant ES	375	267	71%	1.94	41%	12%	9%	74%
Locust Street ES	340	109	32%	2.09	67%	29%	7%	33%
Mary Paxton Keeley ES	723	606	84%	2.04	34%	13%	9%	81%
Midway Heights ES	295	253	86%	1.50	27%	4%	9%	83%
Mill Creek ES	673	558	83%	1.27	15%	7%	6%	85%
New Haven ES	293	208	71%	2.28	53%	22%	11%	61%
Parkade ES	478	387	81%	2.09	53%	13%	10%	78%
Rock Bridge ES	650	541	83%	1.92	45%	12%	10%	82%
Russell Boulevard ES	650	458	70%	1.26	26%	6%	7%	73%
Shepard Boulevard ES	652	486	75%	2.29	55%	14%	9%	82%
Two Mile Prairie ES	195	152	78%	1.86	32%	2%	9%	78%
West Boulevard ES	438	352	80%	2.43	56%	11%	12%	84%
New Southwest ES	650	438	67%	1.06	16%	9%	8%	62%
ELEMENTARY SUBTOTAL	10,878	8,307	76%	1.95	43%	11%	10%	76%
Gentry	706	609	86%	1.70	33%	5%	8%	92%
Jefferson	659	240	36%	2.36	54%	11%	14%	41%
John Warner	700	639	91%	1.10	15%	3%	8%	93%
Lange	715	676	95%	2.41	56%	8%	16%	94%
Oakland	675	554	82%	2.48	56%	10%	13%	94%
Smithton	704	648	92%	1.66	28%	8%	11%	102%
West	777	695	89%	1.92	48%	8%	14%	100%
MIDDLE SUBTOTAL	4,936	4,061	82%	1.90	41%	7%	12%	88%
Battle	1,800	1,752	97%	2.43	47%	10%	12%	102%
Hickman	2,125	2,021	95%	1.78	31%	5%	11%	101%
Rock Bridge	1,800	1,891	105%	1.41	19%	4%	7%	113%
HIGH SUBTOTAL	5,725	5,664	99%	1.86	33%	6%	11%	105%
TOTAL	21,539	18,032	84%	1.91	41%	9%	12%	89%

Elementary to Middle Feeders	Gentry	Jefferson	John Warner	Lange	Oakland	Smithton	West
Alpha Hart Lewis ES				58%			42%
Battle ES				100%			
Benton ES		100%					
Beulah Ralph ES			100%				
Blue Ridge ES					100%		
Cedar Ridge ES					100%		
Derby Ridge ES				100%			
Fairview ES						100%	
Grant ES	24%						76%
Locust Street ES		100%					
Mary Paxton Keeley ES						100%	
Midway Heights ES						100%	
Mill Creek ES	69%		31%				
New Haven ES					100%		
Parkade ES					27%		73%
Rock Bridge ES	100%						
Russell Boulevard ES						25%	75%
Shepard Boulevard ES	43%	57%					
Two Mile Prairie ES				100%			
West Boulevard ES							100%
New Southwest ES			100%				

Middle to High Feeders	Battle	Hickman	Rock Bridge
Gentry			100%
Jefferson (boundary only)	42%	58%	
John Warner			100%
Lange	100%		
Oakland	100%		
Smithton		100%	
West		100%	

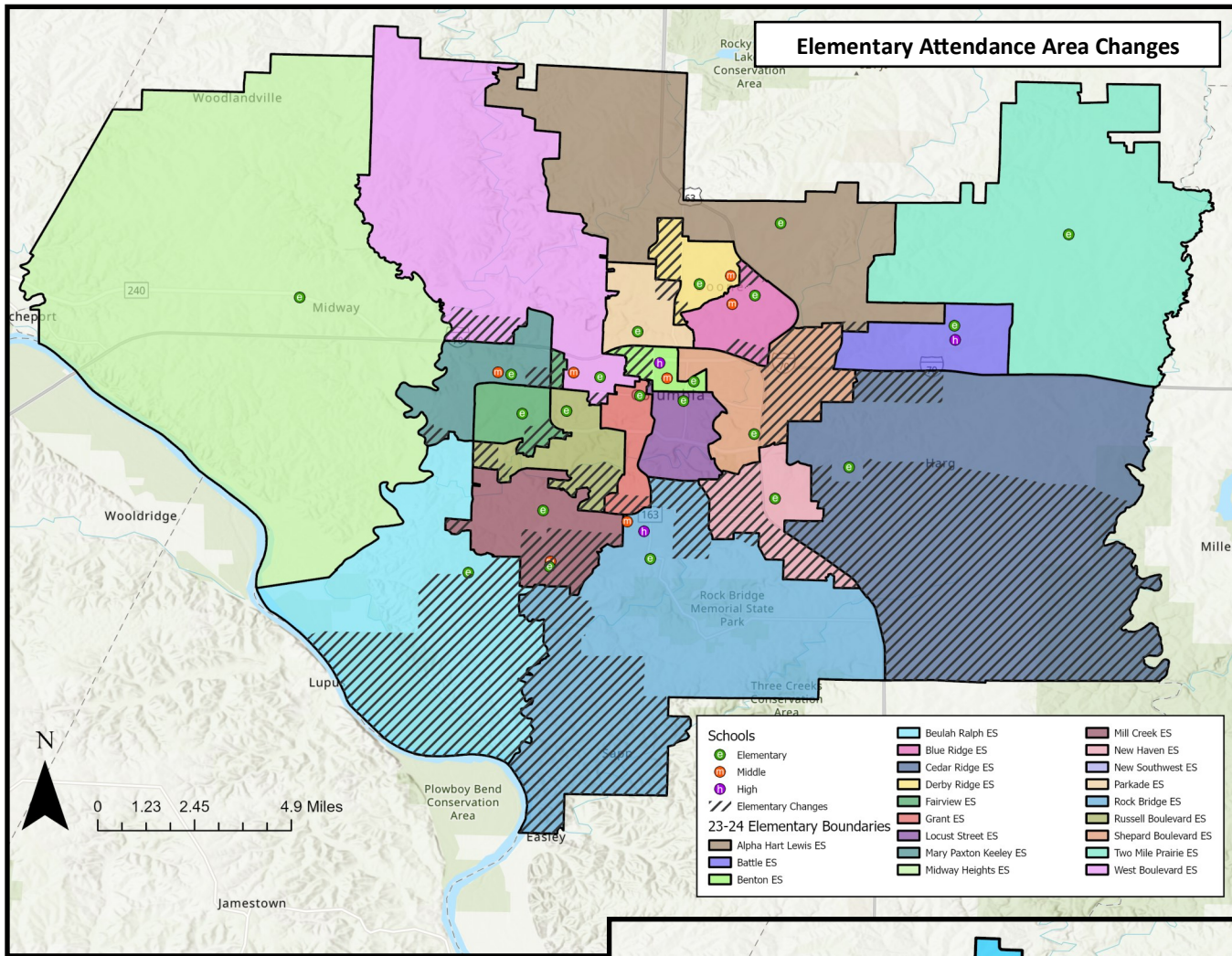
Students Moved		
ES	2,275	27%
MS	910	22%
HS	422	7%

Attend Closest School	
ES	52%
MS	65%
HS	81%

Walkability	
ES	33.9%
MS	16.4%
HS	20.9%

Map & metrics represent end state for each option (incorporates phase 2 and phase 3 changes). Please refer to the attendance area locator or presentation to review the changes associated with each phase. Note: All secondary changes will occur in Phase 2 (2025-26).

Option 5: Areas of Change



The hashed areas on each map indicate the geographic areas that would be changing in this option, overlaid onto the current (2023-24) attendance areas for each level.

