

Charlottesville City Schools | Rezoning Recommendation

January-February, 2025



Agenda

- 1 Process Overview
- 2 Rezoning Options & Survey Results
- 3 Recommendation
- 4 Next Steps



Why Rezoning?

To rebalance school utilizations among our 6 elementary schools into the future.

Why now?

- Populations have shifted over time, leaving some elementary schools well-utilized and others underutilized
 - It is inequitable and operationally inefficient to have some schools sitting below 60% utilized while others are utilized at nearly 80%
- Residential developments have the potential to produce a significant number of students
 - The majority of the developments are located within the southern portion of the Division, with Summit Elementary expected to be hit with the most housing growth over the next 3-10 years
 - Summit Elementary **cannot** support additional capacity on-site; if we do nothing, we are projecting Summit Elementary to be 141% utilized by the 2030-31 school year
 - CCS has the existing elementary capacity to take in the students produced by developments if students are spread more evenly among schools

Rezoning will allow CCS to better balance enrollments among schools over time while also getting ahead of the impact that the housing developments are expected to have.



Rezoning Process

Plan for Planning

Staff Work Group for Rezoning

Background Data

Rezoning Committee

Superintendent's Advisory Committee for Rezoning

Boundary Work-Sessions

Staff Work Group for Rezoning

Community Engagement

Recommendation & Implementation



Rezoning Process

Plan for Planning

Staff Work Group for Rezoning

- Confirm process and timeline
- Discuss other comparable processes
- Define expectations
- Discuss goals for this process

Back Data

Rezoning Committee

Superintendent's Committee for Rezoning

Boundary Work-Sessions

Staff Work Group for Rezoning

Community Engagement

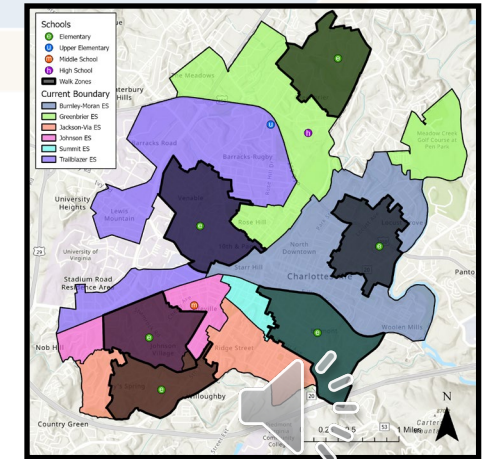
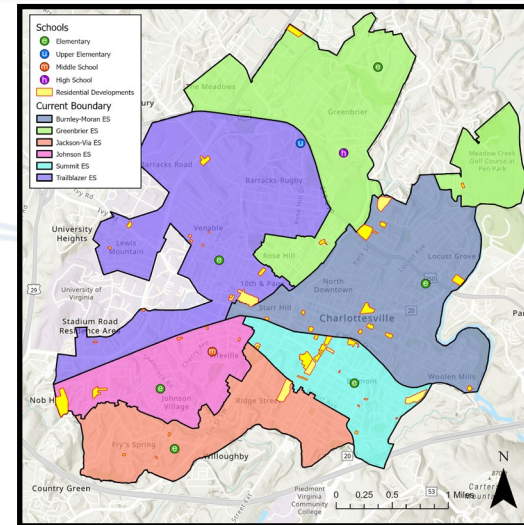
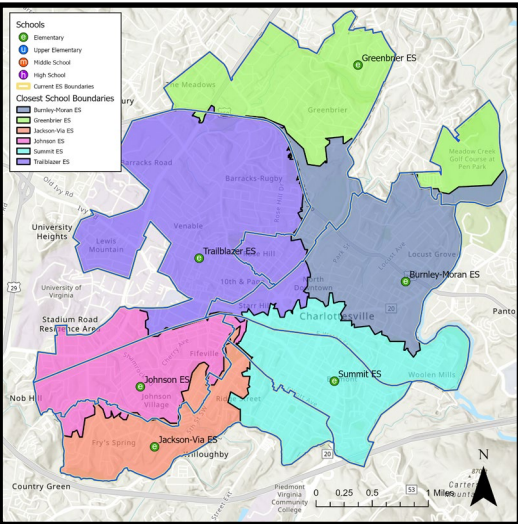


Rezoning Process

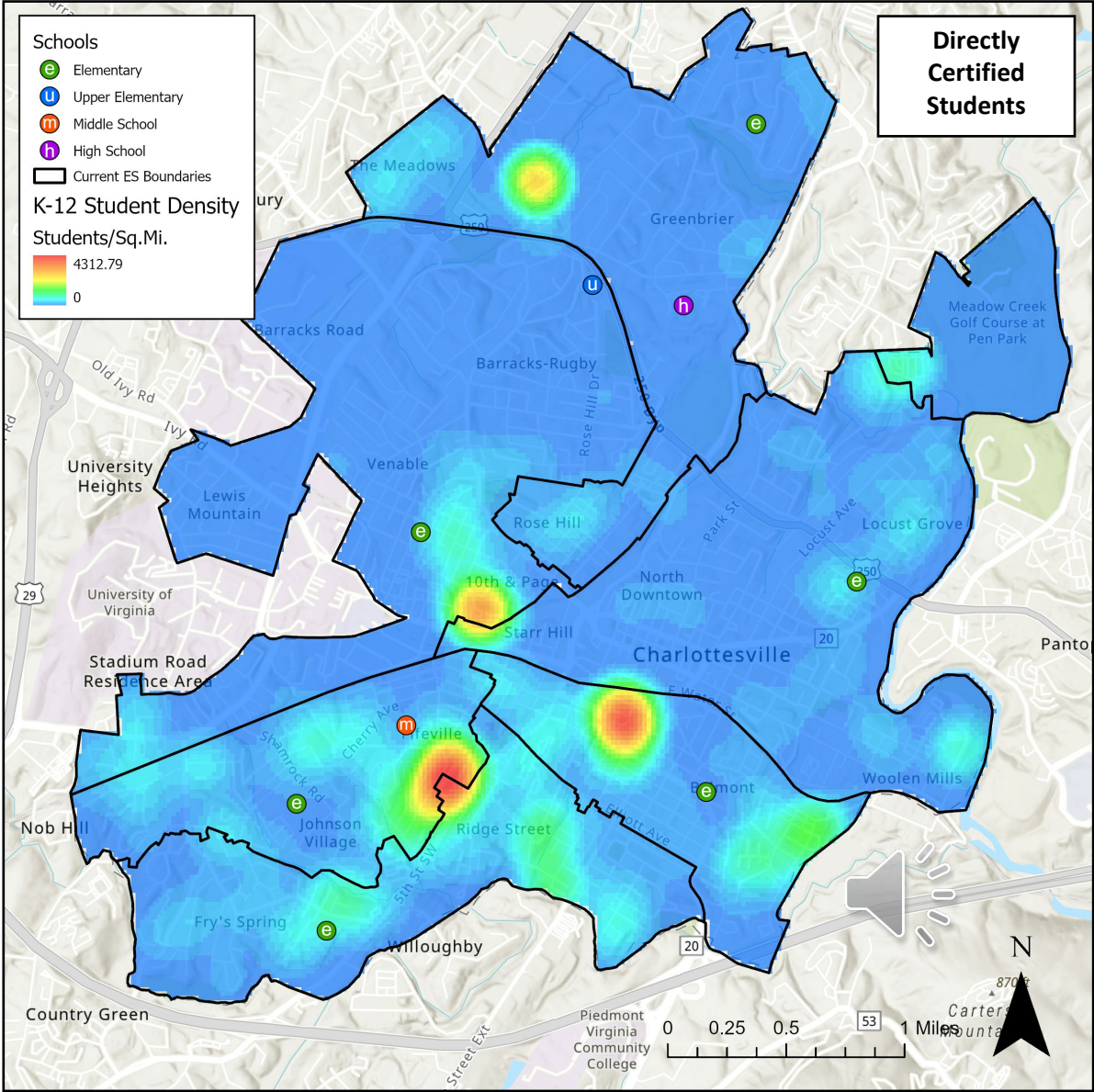
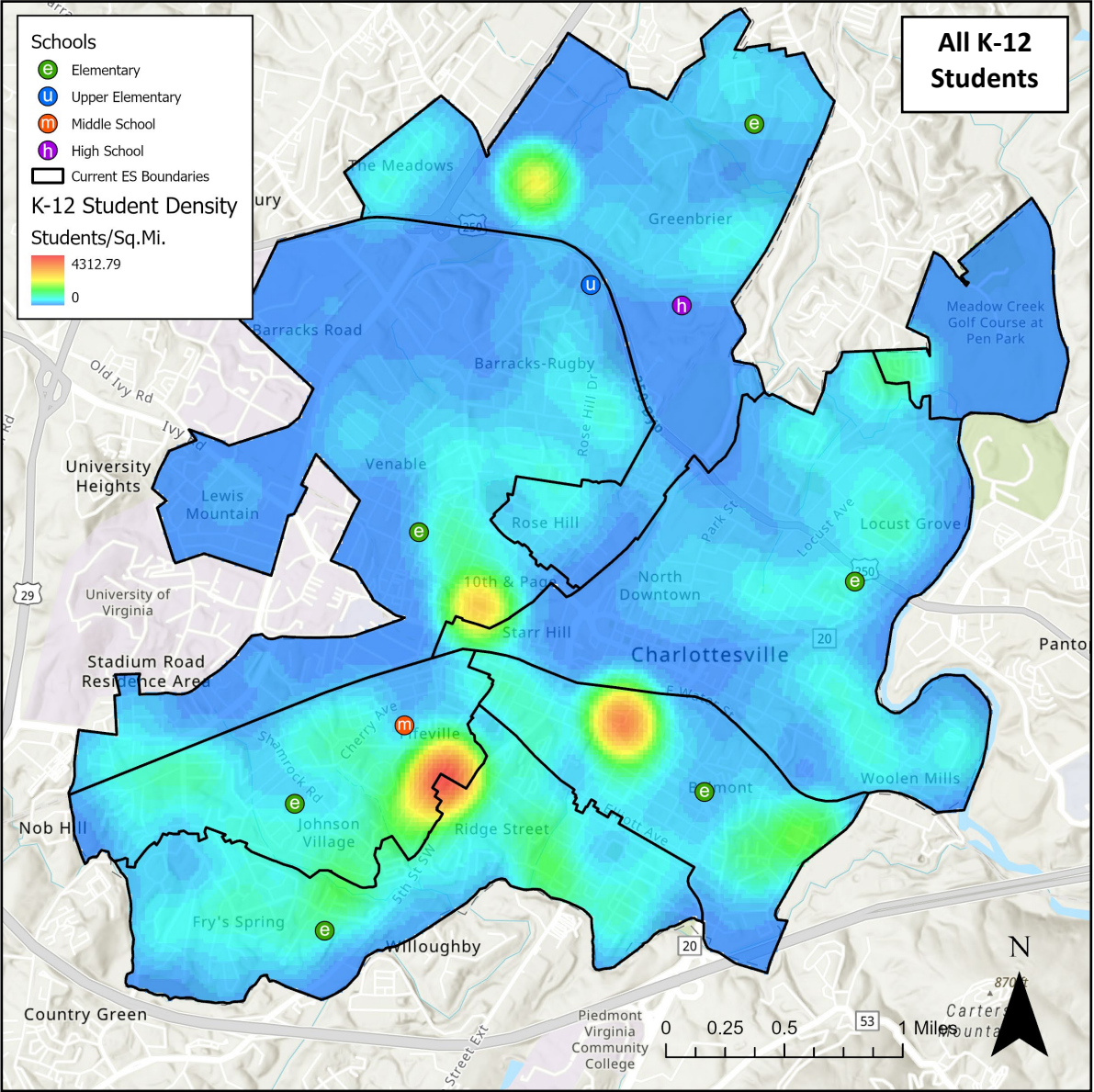
Background Data

- Current state of the schools
- Closest school analysis
- Live/attend analysis
- Density maps
- Walk zones
- Residential development maps and forecasts
- Enrollment projections
- Census datasets

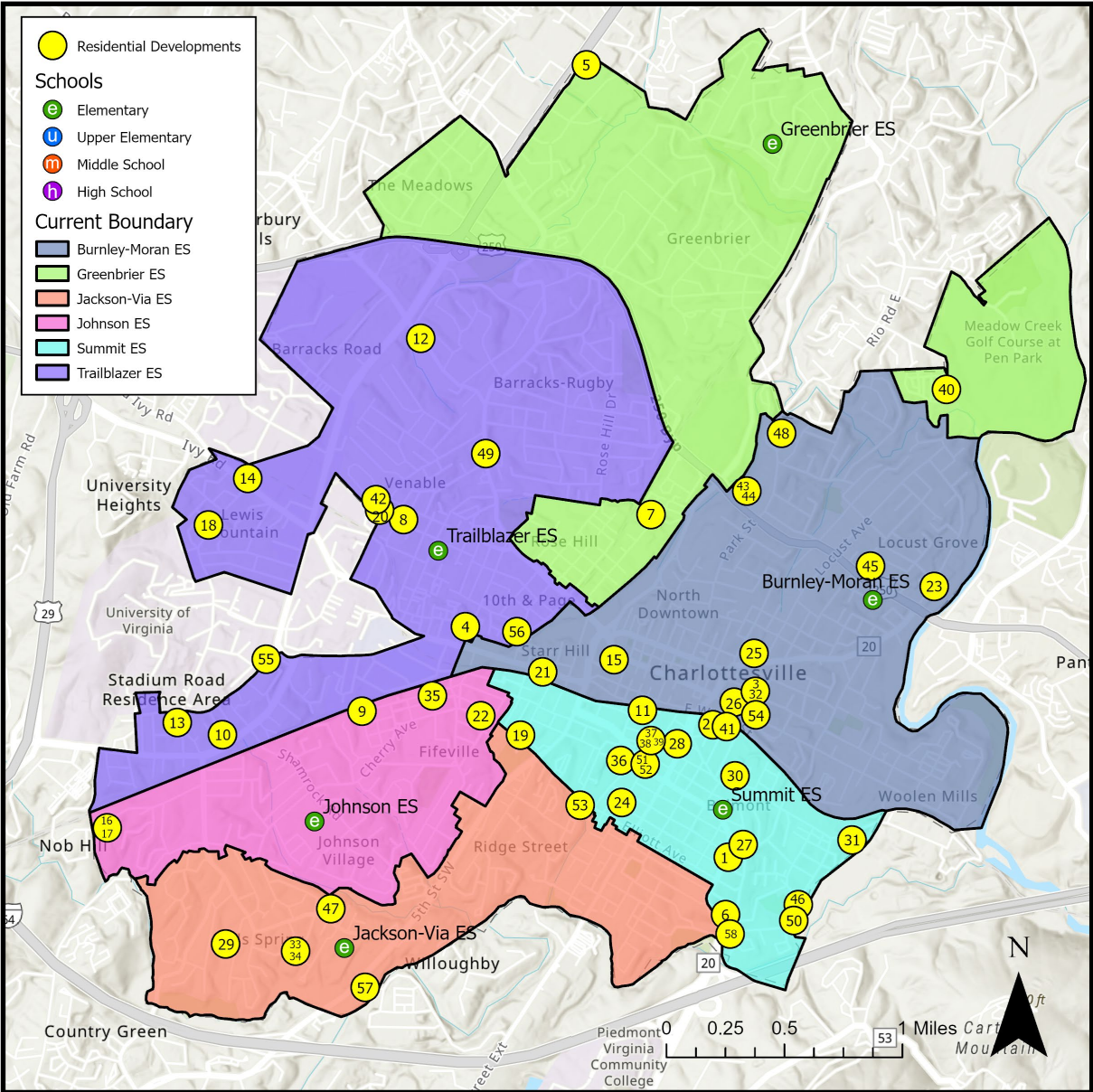
| Charlottesville City Schools | | School of Attendance | | | | | | | | Transfer Out | Transfer Out % |
|------------------------------|------------------|---------------------------------|------------------------------|-------------------------------|---------------------------|--------------------------|-------------------------------|--------------------------------|------------------------|----------------------------------|----------------|
| | | Burnley-Moran Elementary School | Greenbrier Elementary School | Jackson-Via Elementary School | Johnson Elementary School | Summit Elementary School | Trailblazer Elementary School | Walker Upper Elementary School | Lugo-McGinness Academy | | |
| Boundary of Residence | Burnley-Moran ES | 276 | 0 | 5 | 5 | 0 | 3 | 32 | 3 | 16 | 5% |
| | Greenbrier ES | 3 | 209 | 5 | 0 | 0 | 5 | 43 | 3 | 16 | 6% |
| | Jackson-Via ES | 6 | 5 | 335 | 7 | 8 | 1 | 53 | 6 | 33 | 8% |
| | Johnson ES | 1 | 9 | 7 | 293 | 1 | 4 | 47 | 8 | 30 | 8% |
| | Summit ES | 4 | 1 | 9 | 2 | 270 | 3 | 60 | 8 | 27 | 8% |
| | Trailblazer ES | 6 | 1 | 8 | 4 | 3 | 295 | 31 | 7 | 29 | 8% |
| | Out of Division | 12 | 43 | 3 | 19 | 4 | 9 | 19 | 0 | - | - |
| Live & Attend | | 276 | 209 | 335 | 293 | 270 | 295 | 266 | - | Total K-5 Students: 2,204 | |
| Transfer In | | 32 | 59 | 37 | 37 | 16 | 25 | 19 | 35 | | |
| Transfer In % | | 10% | 22% | 10% | 11% | 6% | 8% | 7% | 100% | | |



Student Density



Housing Developments



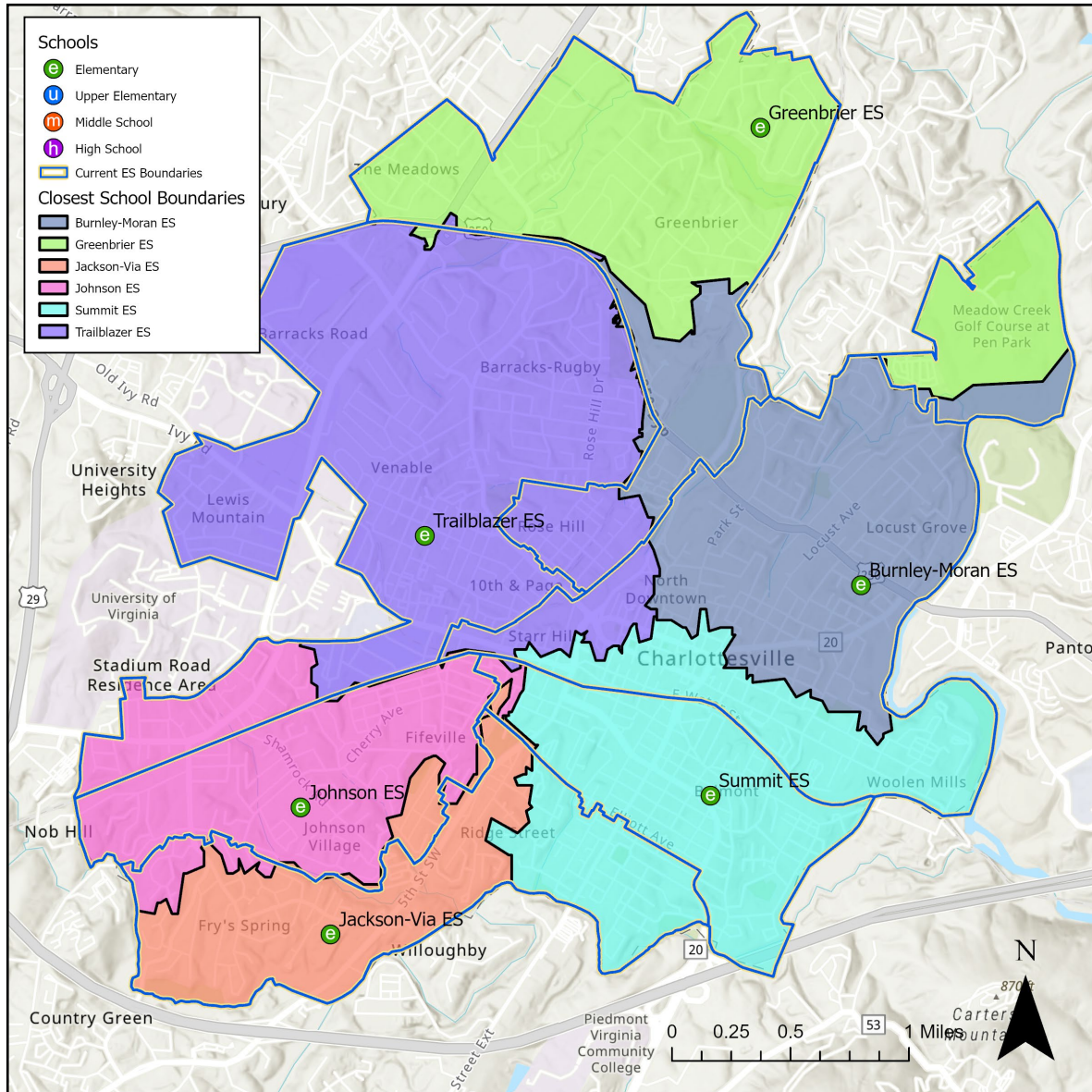
| Housing Type | University Zone | | |
|------------------------|-----------------|-------------------------|------|
| | University Zone | Outside University Zone | CRHA |
| Apartments | 0.01 | 0.25 | 0.60 |
| Single-Family Attached | 0.12 | 0.30 | 0.82 |
| Single-Family | 0.12 | 0.22 | 0.56 |

| School | 2025 Capacity | Live-In Enrollment | Utilization | Low SES % | EL % | SPED % | + Development Utilization |
|------------------|---------------|--------------------|-------------|------------|------------|-----------|---------------------------|
| Burnley-Moran ES | 512 | 290 | 57% | 34% | 13% | 3% | 68% |
| Greenbrier ES | 464 | 237 | 51% | 49% | 27% | 3% | 62% |
| Jackson-Via ES | 470 | 371 | 79% | 58% | 22% | 4% | 86% |
| Johnson ES | 426 | 328 | 77% | 59% | 27% | 4% | 78% |
| Summit ES | 388 | 301 | 78% | 76% | 24% | 5% | 141% |
| Trailblazer ES | 512 | 316 | 62% | 45% | 14% | 5% | 78% |
| TOTAL | 2,772 | 1,843 | 66% | 55% | 22% | 4% | 84% |

Summit Elementary does not have the ability to expand capacity with classroom additions or “learning cottages” due to lot size constraints.



Closest School Analysis

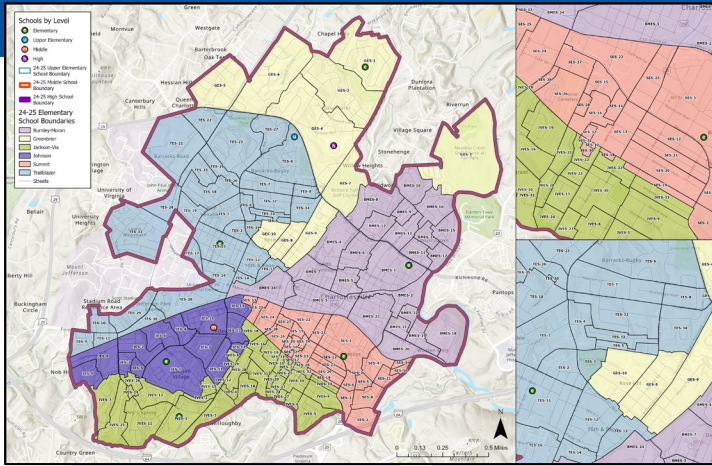


| School | 2025 Capacity | Live-In Enrollment | Utilization |
|------------------|---------------|--------------------|-------------|
| Burnley-Moran ES | 512 | 219 | 43% |
| Greenbrier ES | 464 | 213 | 46% |
| Jackson-Via ES | 470 | 278 | 59% |
| Johnson ES | 426 | 357 | 84% |
| Summit ES | 388 | 472 | 122% |
| Trailblazer ES | 512 | 304 | 59% |
| TOTAL | 2,772 | 1,843 | 66% |

THIS IS NOT A VIABLE OPTION FOR CCS



Rezoning Process



- Makeup: School & community stakeholders, geographically diverse, agree to consider the Division as a whole and remain objective

Rezoning Committee

Superintendent's Advisory Committee for Rezoning

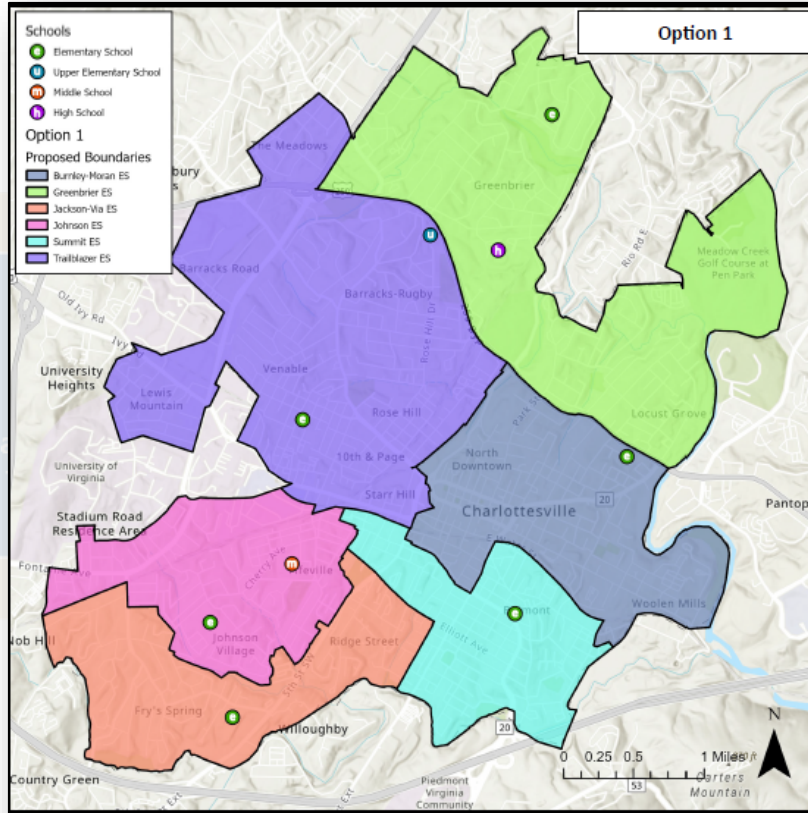
- Committee assists in option creation
- Utilizes key considerations to guide options creation

| Current ES | Planning Unit ID | Option ES | School | 2025 Capacity | Live-In Enrollment | Out of District Enrollment | Utilization | Low SES % | EL % | SPED % | Development Utilization |
|------------------|------------------|------------------|------------------|-------------------|--------------------|----------------------------|-------------|-----------|------|--------|-------------------------|
| Burnley-Moran ES | BMES-1 | Burnley-Moran ES | Burnley-Moran ES | 367 | 331 | 12 | 90% | 37% | 12% | 3% | 111% |
| Burnley-Moran ES | BMES-2 | Burnley-Moran ES | Greenbrier ES | 415 | 237 | 43 | 57% | 49% | 27% | 3% | 69% |
| Burnley-Moran ES | BMES-3 | Burnley-Moran ES | Jackson-Via ES | 406 | 396 | 3 | 97% | 58% | 24% | 4% | 107% |
| Burnley-Moran ES | BMES-4 | Burnley-Moran ES | Burnley-Moran ES | 362 | 358 | 19 | 99% | 60% | 24% | 5% | 101% |
| Burnley-Moran ES | BMES-5 | Burnley-Moran ES | Summit ES | 330 | 260 | 4 | 79% | 76% | 27% | 5% | 148% |
| Burnley-Moran ES | BMES-6 | Burnley-Moran ES | Trailblazer ES | 354 | 281 | 9 | 79% | 43% | 15% | 4% | 102% |
| Burnley-Moran ES | BMES-7 | Burnley-Moran ES | TOTAL | 2,234 | 1,643 | 90 | 83% | 55% | 22% | 4% | 104% |
| | | | | Students Moved | | | | | | | |
| | | | | 101 | | 5% | | | | | |
| | | | | Walkable Students | | | | | | | |
| | | | | 776 | | 42% | | | | | |
| Current ES | Planning Unit ID | Option ES | School | 2025 Capacity | Live-In Enrollment | Out of District Enrollment | Utilization | Low SES % | EL % | SPED % | Development Utilization |
| Burnley-Moran ES | BMES-17 | Burnley-Moran ES | Burnley-Moran ES | 367 | 290 | 12 | 79% | 34% | 13% | 3% | 100% |
| Burnley-Moran ES | BMES-18 | Burnley-Moran ES | Greenbrier ES | 415 | 237 | 43 | 57% | 49% | 27% | 3% | 69% |
| Burnley-Moran ES | BMES-19 | Burnley-Moran ES | Jackson-Via ES | 406 | 371 | 3 | 91% | 58% | 22% | 4% | 101% |
| Burnley-Moran ES | BMES-20 | Burnley-Moran ES | Burnley-Moran ES | 362 | 358 | 19 | 91% | 59% | 24% | 4% | 91% |
| Burnley-Moran ES | BMES-21 | Burnley-Moran ES | Summit ES | 330 | 301 | 4 | 91% | 76% | 24% | 5% | 160% |
| Burnley-Moran ES | BMES-22 | Burnley-Moran ES | Trailblazer ES | 354 | 316 | 9 | 89% | 46% | 14% | 5% | 112% |
| Burnley-Moran ES | BMES-23 | Burnley-Moran ES | TOTAL | 2,234 | 1,643 | 90 | 83% | 55% | 22% | 4% | 104% |

- Key Considerations (in no particular order):**
- Maximize Walkability
 - Maximize Bus Efficiency
 - Keep Neighborhoods Together
 - Maintain or Improve Diversity/Demographic Balance
 - Longevity (at least 5 years)



Rezoning Process



| Option | | | | | | | | |
|--------------------------|---------------|-----------------------|----------------------------|-------------|------------|------------|-----------|---------------------------|
| School | 2025 Capacity | Live-In Enrollment | Out of Division Enrollment | Utilization | Low SES % | EL % | SPED % | + Development Utilization |
| Burnley-Moran ES | 512 | 309 | 12 | 60% | 61% | 26% | 4% | 89% |
| Greenbrier ES | 464 | 304 | 43 | 66% | 42% | 19% | 4% | 86% |
| Jackson-Via ES | 470 | 297 | 3 | 63% | 52% | 17% | 5% | 72% |
| Johnson ES | 426 | 366 | 19 | 86% | 65% | 28% | 5% | 86% |
| Summit ES | 388 | 230 | 4 | 59% | 61% | 18% | 4% | 89% |
| Trailblazer ES | 512 | 337 | 9 | 66% | 46% | 18% | 4% | 82% |
| TOTAL | 2,772 | 1,843 | 90 | 66% | 55% | 22% | 4% | 84% |
| Walkable Students | | Students Moved | | | | | | |
| 617 | 33% | 514 | 28% | | | | | |

Boundary Work-Sessions
Staff Work Group for Rezoning

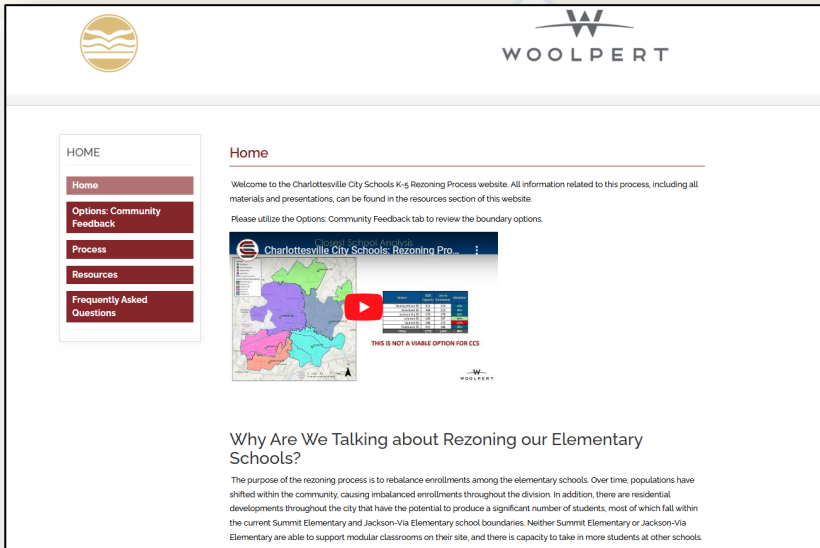
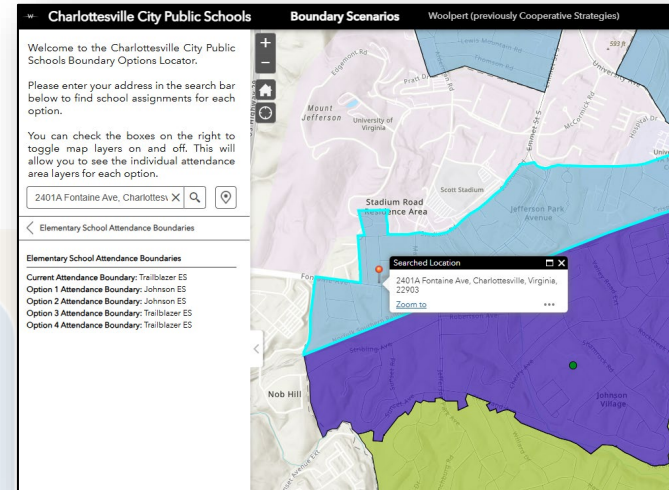
- CCS Staff team reviews options created by committee; makes adjustments & new options if necessary
- Determines which options move forward
- Ensures options follow criteria and accomplish goals



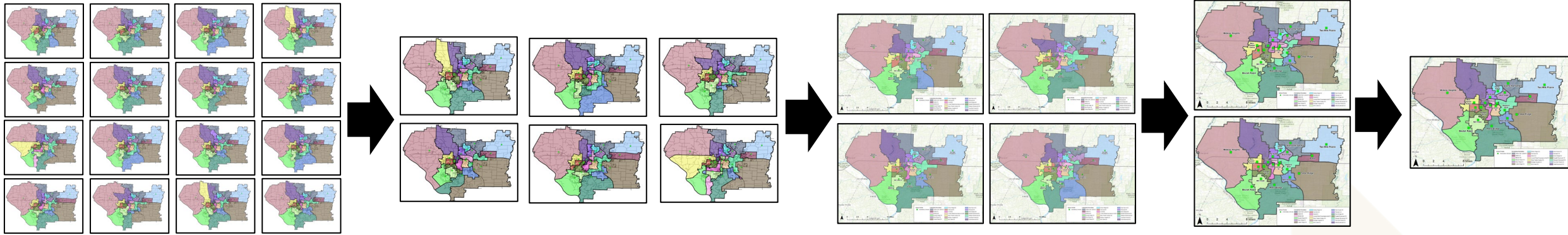
Rezoning Process

- Present boundary options to community for feedback
- Ensure community understands process, reasoning behind boundary adjustments
- In-person & online feedback opportunities
- Feedback was compiled into a report

Community Engagement: Initial Options



Rezoning Process



- **Revise boundary options based on stakeholder feedback**

Rezoning Committee
Superintendent's Advisory Committee for Rezoning

Boundary Work-Sessions
Staff Work Group for Rezoning

Community Engagement

Recommendation & Implementation



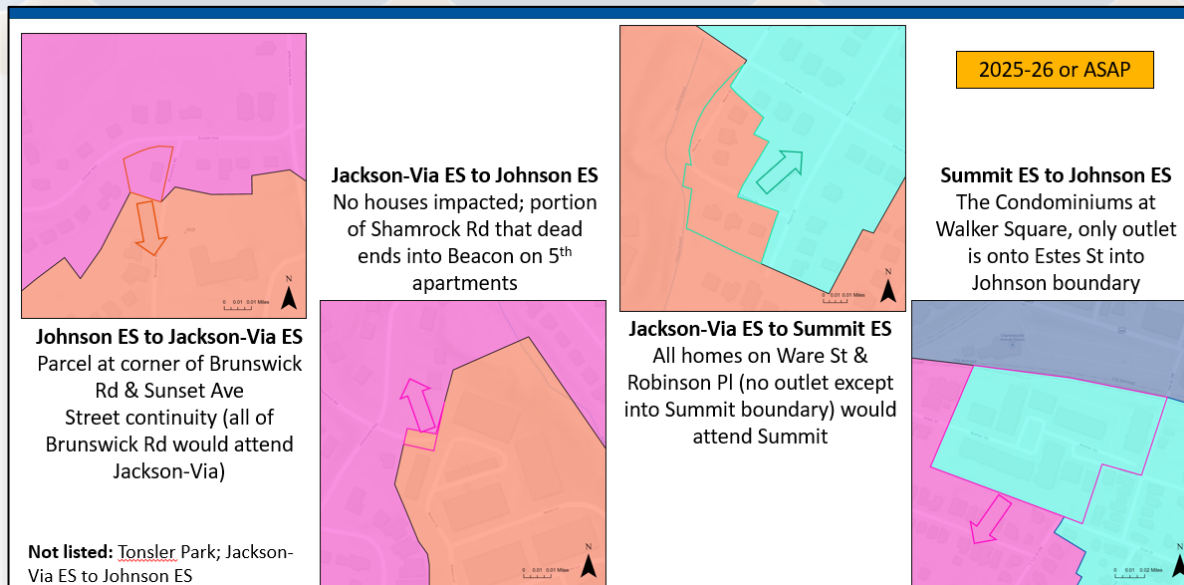
Rezoning Process

- Review rezoning recommendation
- Provide opportunity for community members to provide feedback on each area of change
- Testimony will be collected
- Results will be posted to project website

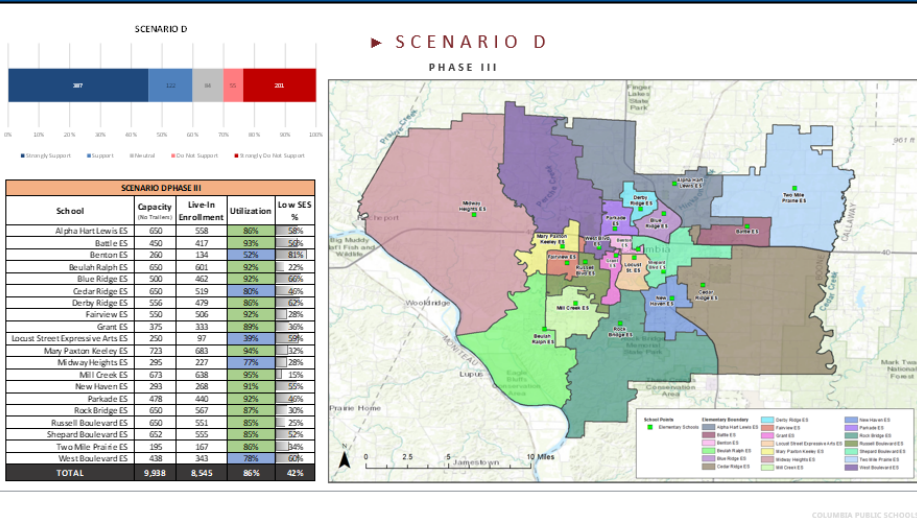
Community Engagement:

Q&A Meeting, plus Public Hearing

Recommendation & Implementation



Rezoning Process



- Board will "hear" this recommendation on February 6; they will "discuss" this plan on March 6; they will vote on this plan on March 27.
- Recommendation to align with CCS rezoning criteria & support community feedback
- Project website & school locator application will be available throughout implementation

Recommendation & Implementation

| Scenario: | Board Guidelines: Based on 22-23 School Year (not long term) | | | | | | | | Additional Metrics | | | |
|------------|--|------------------------------------|---------------------|----------------------|---|-----------------------------------|----------------|---------------------------|-----------------------|------------------------|--|---|
| | Minimize disruption (short term) | Keep siblings together | Balanced Enrollment | Average Balanced SES | Transportation | Keep Neighborhoods together | Feeder Splits? | Follow natural boundaries | # of schools impacted | # of students impacted | Utilization Ranges | Socioeconomic Ranges |
| Scenario A | 2 | Based on grandfathering provisions | 1 | 2 | All scenarios are feasible for transportation | Neighborhood lines are subjective | 2 | 2 | 13 | 536 | ES: 67% - 91% MS: 97% - 100% HS: 77% - 81% | ES: 45% - 79% MS: 53% - 58% HS: 43% - 46% |
| Scenario B | 4 | | 1 | 1 | | | 1 | 2 | 15 (all) | 1,079 | ES: 69% - 90% MS: 97% - 101% HS: 76% - 82% | ES: 41% - 80% MS: 55% - 56% HS: 43% - 46% |
| Scenario C | 3 | | 3 | 2 | | | 1 | 2 | 15 (all) | 631 | ES: 69% - 92% MS: 95% - 102% HS: 73% - 86% | ES: 41% - 80% MS: 54% - 58% HS: 44% - 46% |



Key Considerations for Rezoning

As much as possible:

- Maximize Walkability
- Maximize Bus Efficiency
- Keep Neighborhoods together
- Maintain or Improve Diversity/Demographic Balance
- Longevity (at least 5 years)

Reminder:

Some of these considerations will contradict one another.

The committee was expected to consider the Division as a whole, not just individuals or neighborhoods.

CCS does not control:

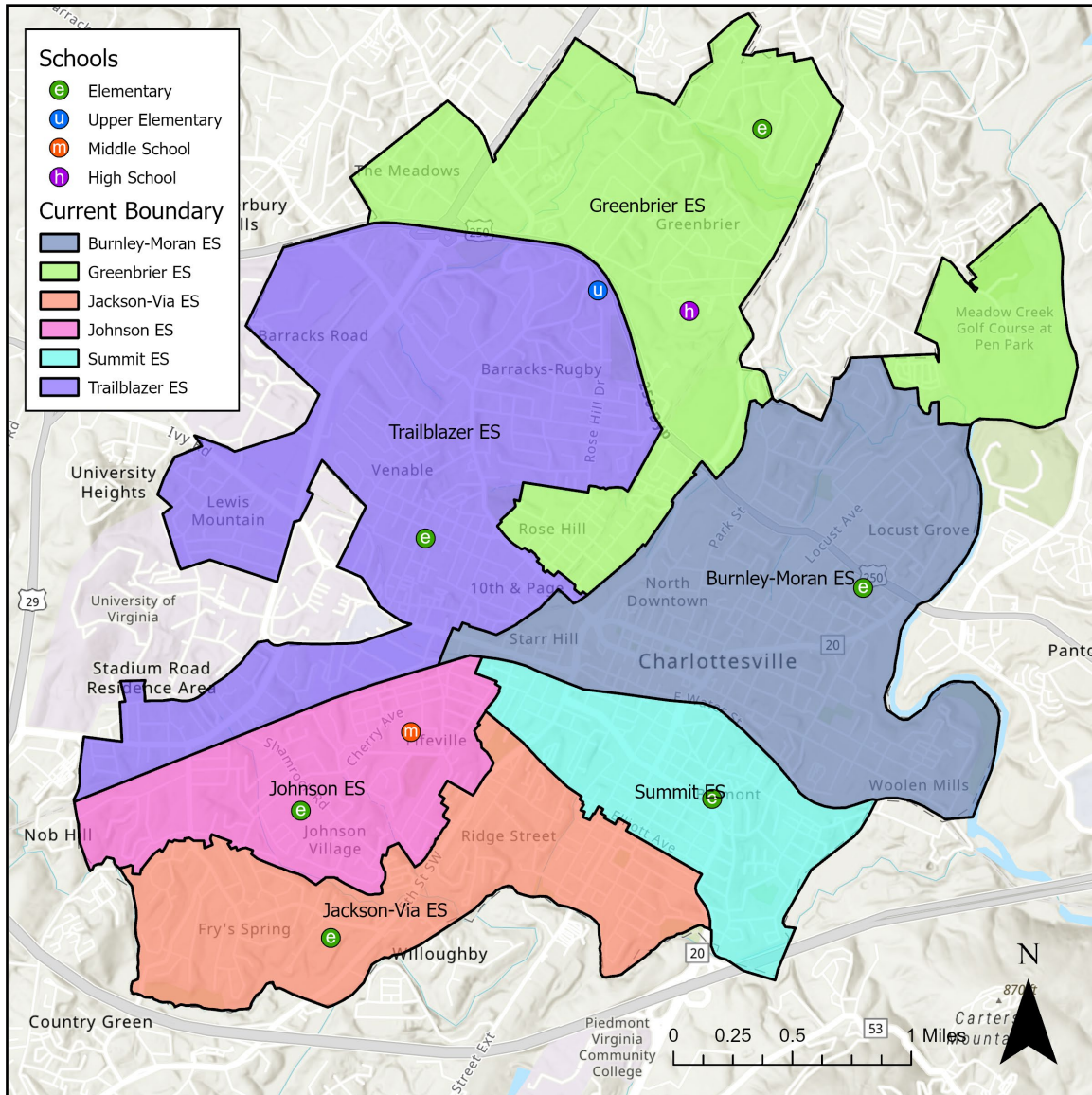
- Where students and families reside (student densities)
- The locations or lot sizes of existing housing
- The locations or timelines of housing developments (affordable or not)
- The ability (or inability) to place modular classrooms at some school sites
- The ability (or inability) to add classroom additions to some school sites
- The capacities or locations of existing schools (decisions made 50+ years ago)



Rezoning Options & Survey Results



Current Boundaries



| School | 2025 Capacity | Live-In Enrollment | Out of Division Enrollment | Utilization | Low SES % | EL % | SPED % | + Development Utilization |
|------------------|---------------|--------------------|----------------------------|-------------|------------|------------|-----------|---------------------------|
| Burnley-Moran ES | 512 | 290 | 12 | 57% | 34% | 13% | 3% | 68% |
| Greenbrier ES | 464 | 237 | 43 | 51% | 49% | 27% | 3% | 62% |
| Jackson-Via ES | 470 | 371 | 3 | 79% | 58% | 22% | 4% | 86% |
| Johnson ES | 426 | 328 | 19 | 77% | 59% | 27% | 4% | 78% |
| Summit ES | 388 | 301 | 4 | 78% | 76% | 24% | 5% | 141% |
| Trailblazer ES | 512 | 316 | 9 | 62% | 45% | 14% | 5% | 78% |
| TOTAL | 2,772 | 1,843 | 90 | 66% | 55% | 22% | 4% | 84% |

| Walkable Students | |
|-------------------|-----|
| 776 | 42% |

Upcoming Changes:

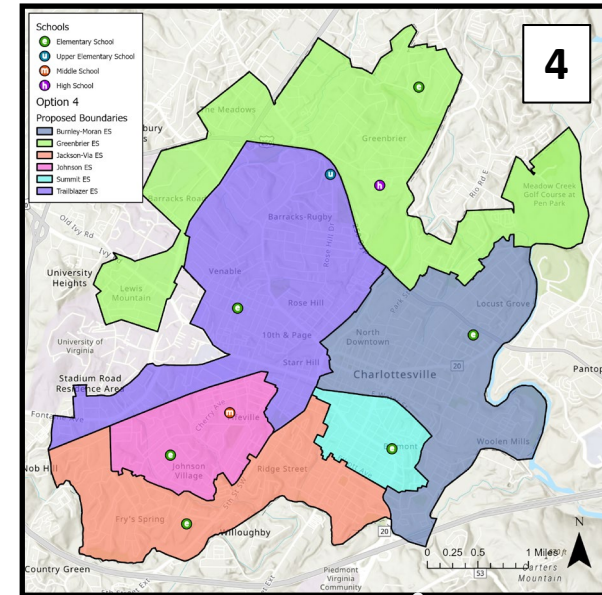
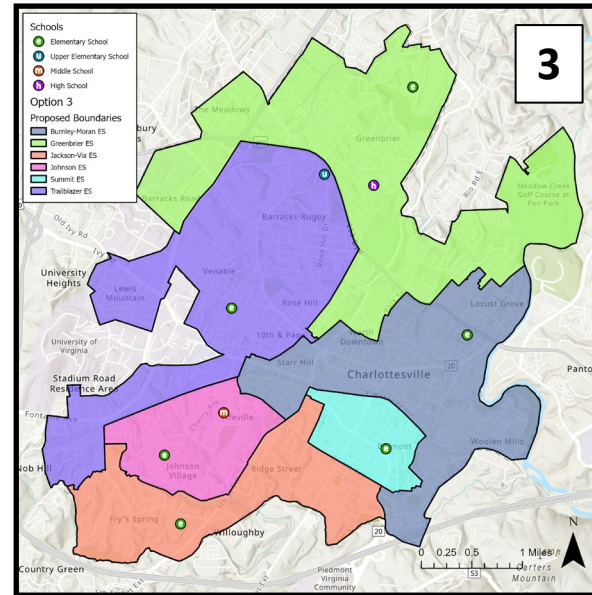
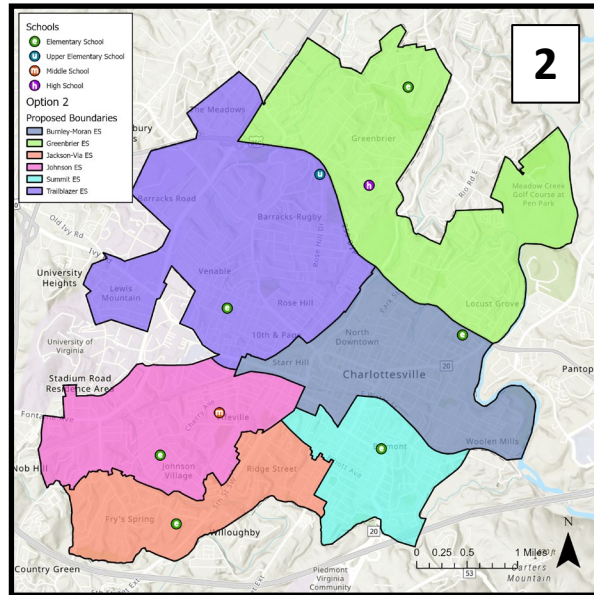
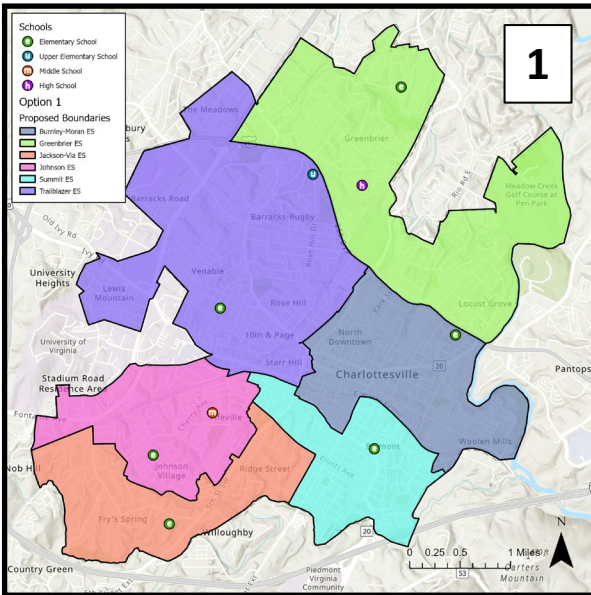
- 2026-27: PreK will move out of elementary schools, 5th grade students will remain at their assigned elementary school
- Walker Upper Elementary will become a PreK center
- Buford Middle School will become a 6-8 middle school, and be renamed Charlottesville Middle School



Original Draft Options

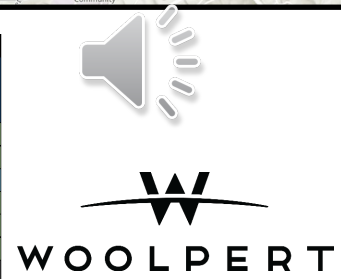
| Option 2 | | | | | | | | |
|------------------|---------------|--------------------|----------------------------|-------------|------------|------------|-----------|---------------------------|
| School | 2025 Capacity | Live-In Enrollment | Out of District Enrollment | Utilization | Low SES % | EL % | SPED % | + Development Utilization |
| Burnley-Moran ES | 512 | 287 | 12 | 56% | 60% | 23% | 3% | 75% |
| Greenbrier ES | 464 | 304 | 43 | 66% | 42% | 19% | 4% | 86% |
| Jackson-Via ES | 470 | 374 | 3 | 80% | 62% | 25% | 4% | 87% |
| Johnson ES | 426 | 352 | 19 | 83% | 55% | 22% | 5% | 89% |
| Summit ES | 388 | 193 | 4 | 50% | 64% | 21% | 5% | 87% |
| Trailblazer ES | 512 | 333 | 9 | 65% | 46% | 18% | 4% | 81% |
| TOTAL | 2,772 | 1,843 | 90 | 66% | 55% | 22% | 4% | 84% |

| Option 4 | | | | | | | | |
|------------------|---------------|--------------------|----------------------------|-------------|------------|------------|-----------|---------------------------|
| School | 2025 Capacity | Live-In Enrollment | Out of District Enrollment | Utilization | Low SES % | EL % | SPED % | + Development Utilization |
| Burnley-Moran ES | 512 | 307 | 12 | 60% | 44% | 19% | 4% | 82% |
| Greenbrier ES | 464 | 278 | 43 | 60% | 45% | 24% | 3% | 79% |
| Jackson-Via ES | 470 | 365 | 3 | 78% | 54% | 19% | 4% | 86% |
| Johnson ES | 426 | 348 | 19 | 82% | 65% | 30% | 5% | 82% |
| Summit ES | 388 | 193 | 4 | 50% | 78% | 24% | 5% | 85% |
| Trailblazer ES | 512 | 352 | 9 | 69% | 47% | 13% | 5% | 88% |
| TOTAL | 2,772 | 1,843 | 90 | 66% | 55% | 22% | 4% | 84% |



| Option 1 | | | | | | | | |
|------------------|---------------|--------------------|----------------------------|-------------|------------|------------|-----------|---------------------------|
| School | 2025 Capacity | Live-In Enrollment | Out of District Enrollment | Utilization | Low SES % | EL % | SPED % | + Development Utilization |
| Burnley-Moran ES | 512 | 309 | 12 | 60% | 61% | 26% | 4% | 89% |
| Greenbrier ES | 464 | 304 | 43 | 66% | 42% | 19% | 4% | 86% |
| Jackson-Via ES | 470 | 297 | 3 | 63% | 52% | 17% | 5% | 72% |
| Johnson ES | 426 | 366 | 19 | 86% | 65% | 28% | 5% | 86% |
| Summit ES | 388 | 230 | 4 | 59% | 61% | 18% | 4% | 89% |
| Trailblazer ES | 512 | 337 | 9 | 66% | 46% | 18% | 4% | 82% |
| TOTAL | 2,772 | 1,843 | 90 | 66% | 55% | 22% | 4% | 84% |

| Option 3 | | | | | | | | |
|------------------|---------------|--------------------|----------------------------|-------------|------------|------------|-----------|---------------------------|
| School | 2025 Capacity | Live-In Enrollment | Out of District Enrollment | Utilization | Low SES % | EL % | SPED % | + Development Utilization |
| Burnley-Moran ES | 512 | 325 | 12 | 63% | 46% | 20% | 3% | 90% |
| Greenbrier ES | 464 | 308 | 43 | 66% | 44% | 22% | 4% | 84% |
| Jackson-Via ES | 470 | 329 | 3 | 70% | 53% | 16% | 4% | 77% |
| Johnson ES | 426 | 344 | 19 | 81% | 66% | 31% | 4% | 81% |
| Summit ES | 388 | 189 | 4 | 49% | 80% | 25% | 5% | 84% |
| Trailblazer ES | 512 | 348 | 9 | 68% | 47% | 16% | 5% | 85% |
| TOTAL | 2,772 | 1,843 | 90 | 66% | 55% | 22% | 4% | 84% |



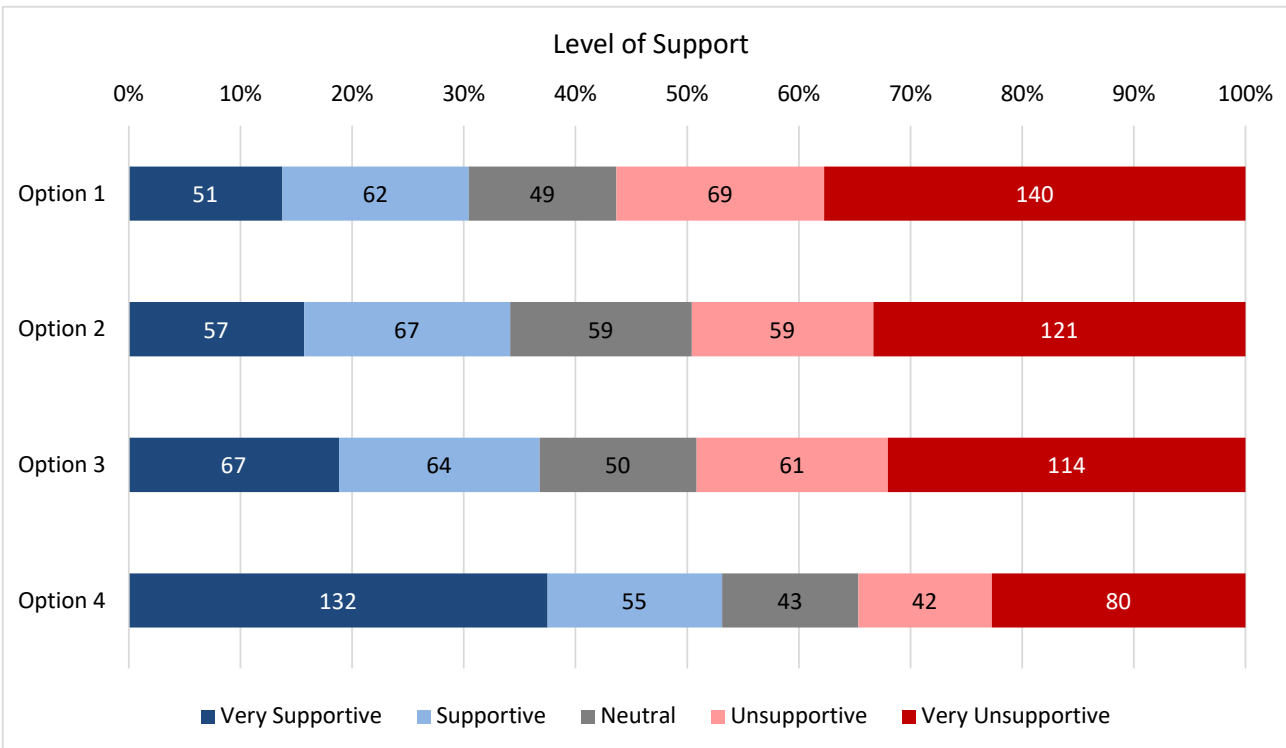
Survey Response Overview

| School Affiliation | |
|---------------------------------|-----|
| Charlottesville High School | 82 |
| Buford Middle School | 60 |
| Walker Upper Elementary School | 77 |
| Burnley-Moran Elementary School | 161 |
| Greenbrier Elementary School | 42 |
| Jackson-Via Elementary School | 60 |
| Johnson Elementary School | 60 |
| Summit Elementary School | 67 |
| Trailblazer Elementary School | 31 |
| All | 8 |
| None | 29 |

| Parent/Guardian/Student Status | |
|--|-----|
| I am the parent/guardian of a current elementary school student | 297 |
| I am the parent/guardian of a current upper elementary school student | 52 |
| I am the parent/guardian of a current middle school student | 39 |
| I am the parent/guardian of a current high school student | 43 |
| I am the parent/guardian of a private/parochial school student | 18 |
| I am the grandparent of a current and/or future Charlottesville City Schools student | 16 |
| I am the parent/guardian of a future Charlottesville City Schools student | 85 |
| I am a community member | 88 |
| I am a current student | 5 |
| I am a Charlottesville City Schools staff member | 59 |



Survey Response Overview



Option 1:

- Concerns about the number of students moving and reduced walkability
- Concerns about specific neighborhoods moving, related to walkability & proximity
- Concerned with imbalanced diversity metrics among schools

Option 2:

- Support for better balancing diversity among schools
- Concerns about specific neighborhoods moving, related to walkability & proximity

Option 3:

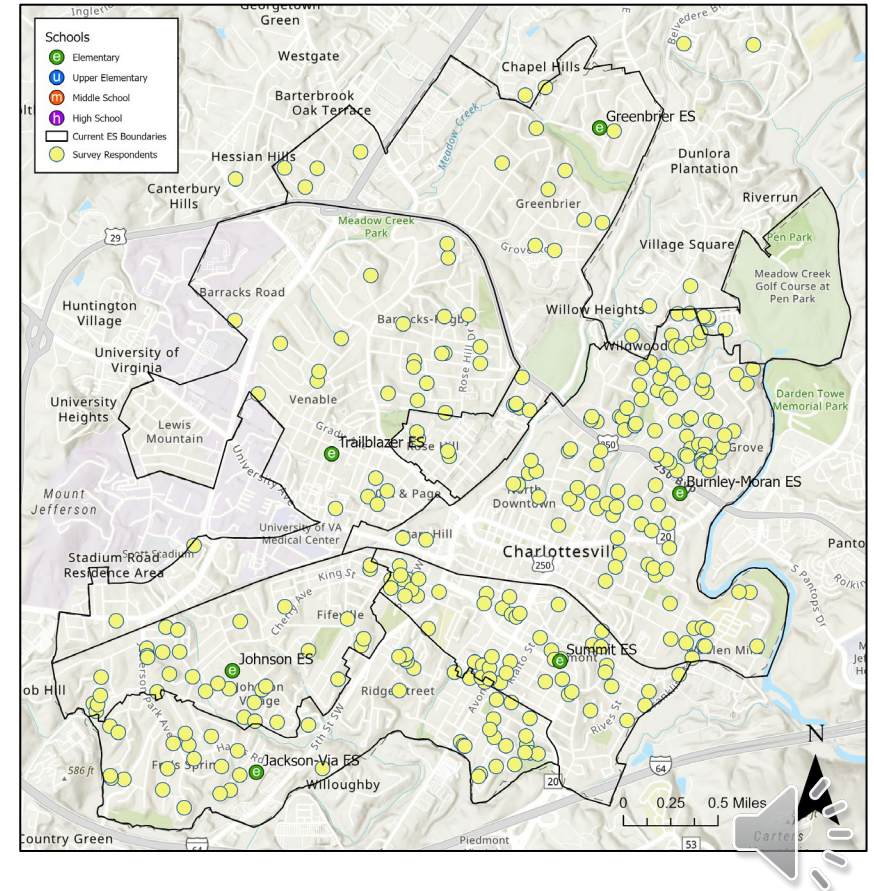
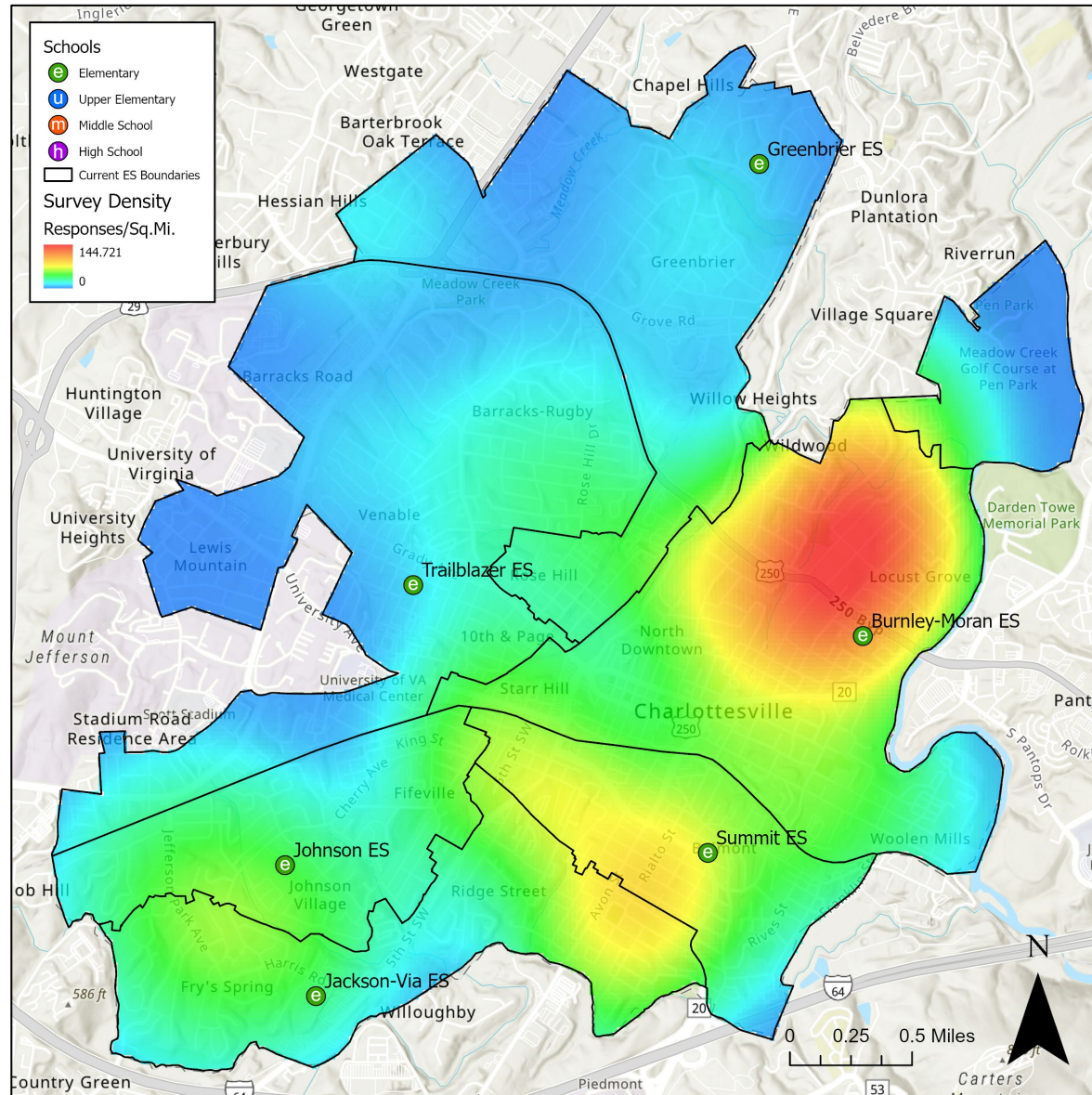
- Support for walkability
- Concerned with imbalanced diversity metrics among schools
- Support for fewer students moved

Option 4:

- Support for fewest students moved
- Support for walkability
- Concerns about higher SES and EL rates at Summit



Survey Response Density



Engagements & Additional Information

Engagement Opportunities

October 28: Greenbrier Elementary

October 29: Jackson-Via Elementary

October 30: Summit Elementary

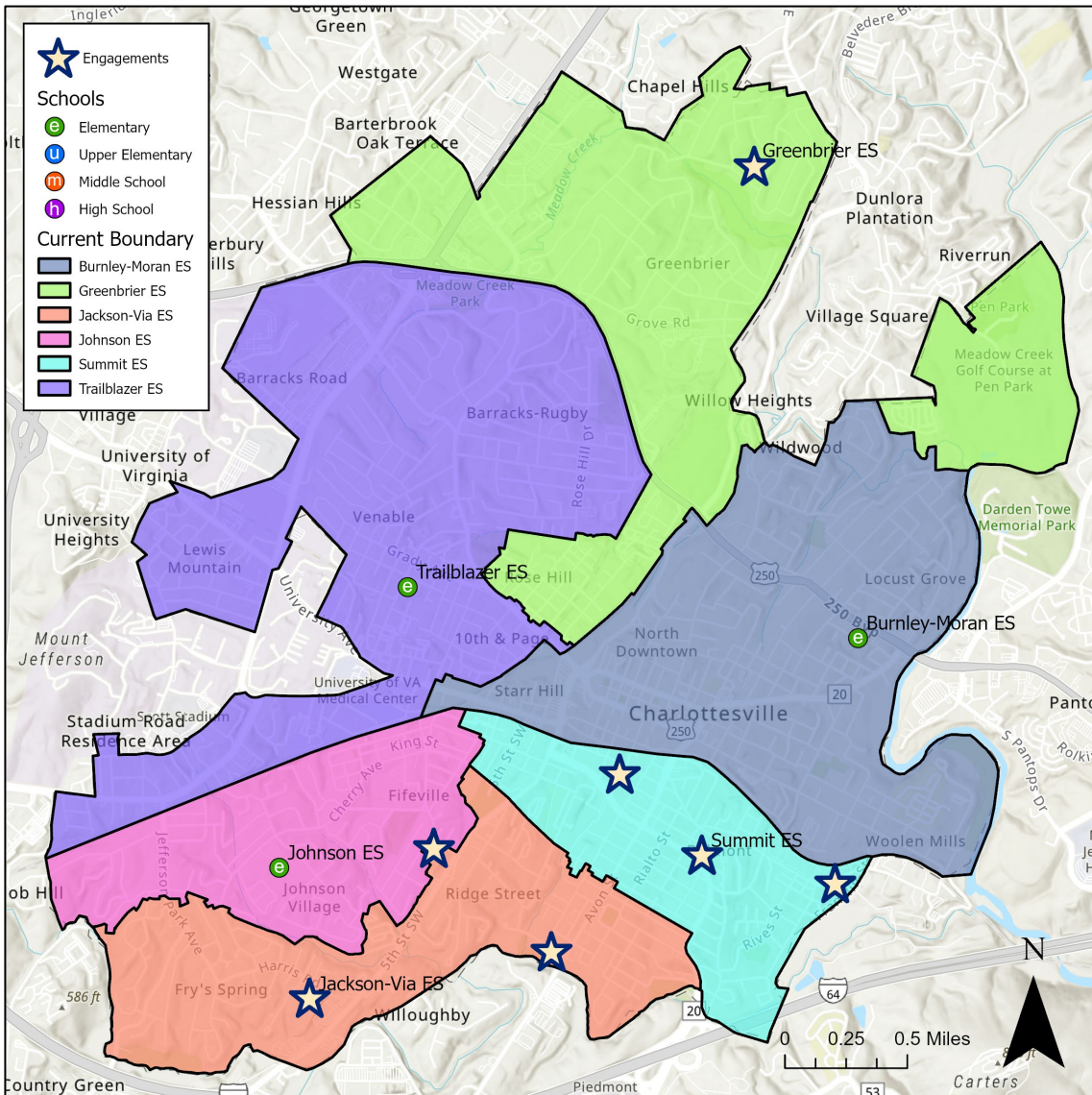
November 18: Kindlewood

December 3: Carlton Avenue Mobile Home Park

December 12: Greenstone Community Center

Board Meeting: 12/6

- Board members were presented with the survey results to-date, along with some of the questions that were frequently being asked
- Board discussed the options & results, indicated a **strong** preference to balance demographics among schools



Priority Exemptions (cohort phasing) Recommendations

- ❖ **Incoming 4th and 5th grade** students that apply to remain at their existing school will be prioritized
- ❖ **Early start students** (incoming KG) that apply to attend their future school will be prioritized

Any family choosing to participate in cohort phasing **must** provide their own transportation to and from school every day.

Pupil Transit will offer transportation if future school bus driver staffing allows, but this is not guaranteed.

Siblings of students receiving priority exemptions are also welcome to apply for a transfer *while the older, exempted sibling is still attending that school.*

Siblings will be accepted based on space availability.



Recommendation



Key Considerations for Rezoning

As much as possible:

- Maximize Walkability
- Maximize Bus Efficiency
- Keep Neighborhoods together
- Maintain or Improve Diversity/Demographic Balance
- Longevity (at least 5 years)

Reminder:

Some of these considerations will contradict one another.

The committee was expected to consider the Division as a whole, not just individuals or neighborhoods.

CCS does not control:

- Where students and families reside (student densities)
- The locations or lot sizes of existing housing
- The locations or timelines of housing developments (affordable or not)
- The ability (or inability) to place modular classrooms at some school sites
- The ability (or inability) to add classroom additions to some school sites
- The capacities or locations of existing schools (decisions made 50+ years ago)



Recommendation Planning: Committee

Superintendent's Advisory Committee met twice in January (2025) to review feedback and to discuss recommendations.

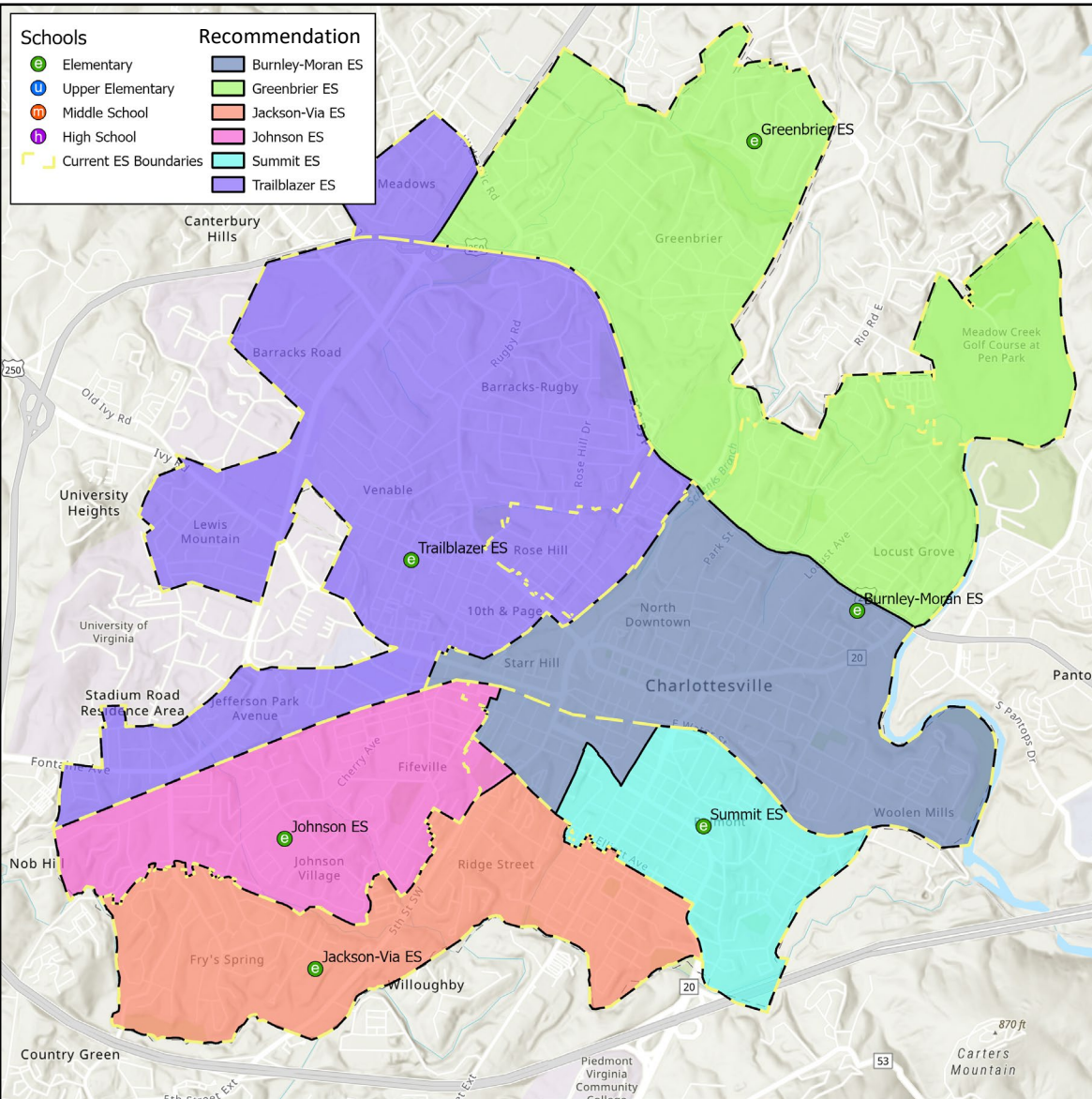
Reminder: This is a group of parent and community member volunteers. This group was expected to remain objective and consider the needs of all CCS students; not just individual students or neighborhoods. Some committee members are impacted in this recommendation.

Their job was to advise the Superintendent on a recommendation, not make a recommendation to the Board.

The Staff Work Group for Rezoning determined the final recommendation based on the work and feedback from the committee.



Recommendation



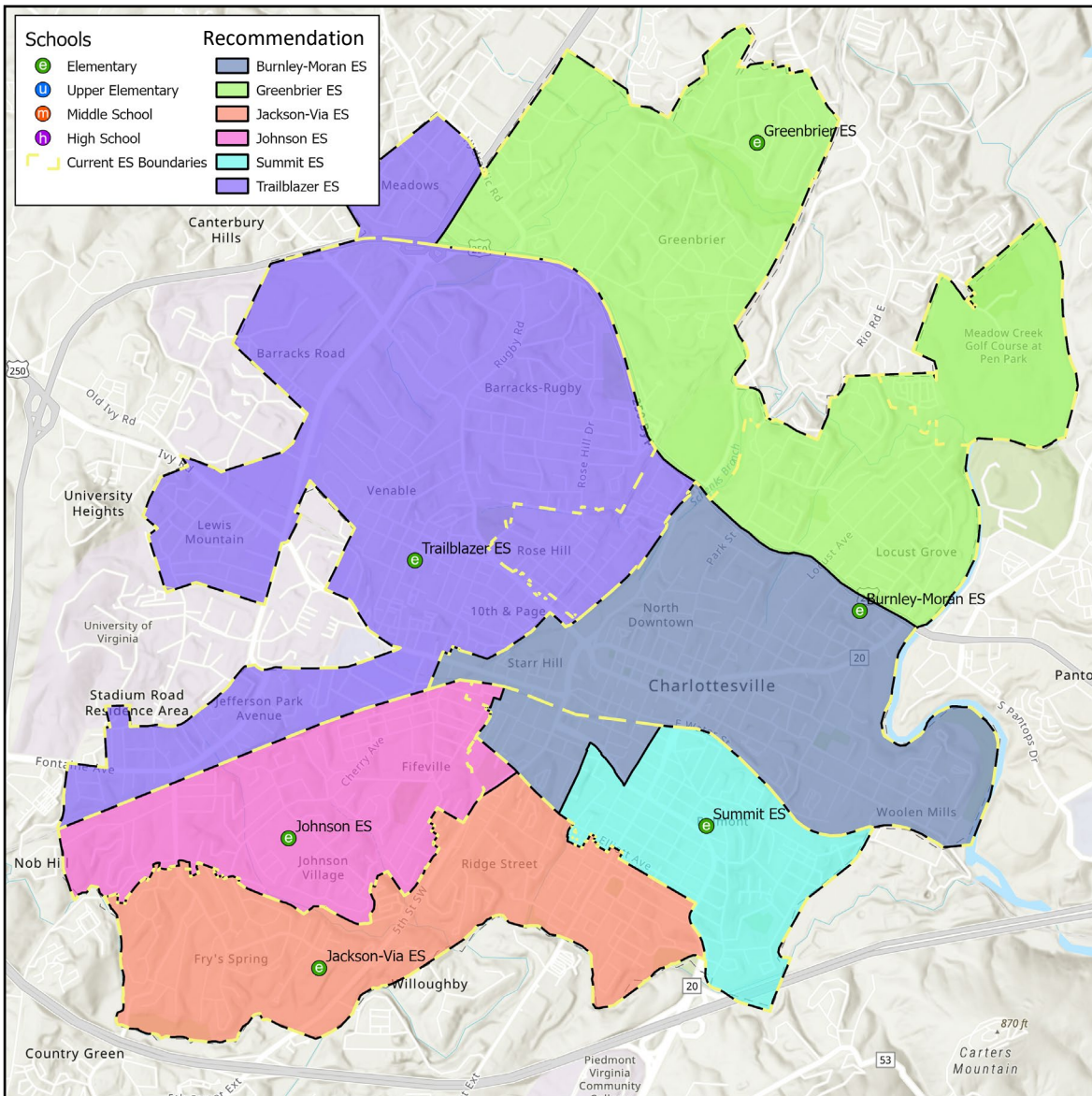
| School | 2025 Capacity | Live-In Enrollment | Out of District Enrollment | Utilization | Low SES % | EL % | SPED % | + Development Utilization |
|------------------|---------------|--------------------|----------------------------|-------------|------------|------------|-----------|---------------------------|
| Burnley-Moran ES | 512 | 321 | 12 | 63% | 59% | 21% | 3% | 85% |
| Greenbrier ES | 464 | 304 | 43 | 66% | 42% | 19% | 4% | 86% |
| Jackson-Via ES | 470 | 371 | 3 | 79% | 58% | 22% | 4% | 86% |
| Johnson ES | 426 | 328 | 19 | 77% | 59% | 27% | 4% | 78% |
| Summit ES | 388 | 151 | 4 | 39% | 65% | 21% | 5% | 76% |
| Trailblazer ES | 512 | 368 | 9 | 72% | 48% | 17% | 5% | 88% |
| TOTAL | 2,772 | 1,843 | 90 | 66% | 55% | 22% | 4% | 84% |

| Students Moved | |
|----------------|-----|
| 321 | 17% |

| Walkable Students | |
|-------------------|-----|
| 667 | 36% |

| K-5 Student Movement by School | | Recommendation | | | | | | TOTAL |
|--------------------------------|------------------|------------------|---------------|----------------|------------|-----------|----------------|------------|
| | | Burnley-Moran ES | Greenbrier ES | Jackson-Via ES | Johnson ES | Summit ES | Trailblazer ES | |
| Current Boundary | Burnley-Moran ES | 0 | 119 | 0 | 0 | 0 | 0 | 119 |
| | Greenbrier ES | 0 | 0 | 0 | 0 | 0 | 52 | 52 |
| | Jackson-Via ES | 0 | 0 | 0 | 0 | 0 | 0 | 0 |
| | Johnson ES | 0 | 0 | 0 | 0 | 0 | 0 | 0 |
| | Summit ES | 150 | 0 | 0 | 0 | 0 | 0 | 150 |
| | Trailblazer ES | 0 | 0 | 0 | 0 | 0 | 0 | 0 |
| TOTAL | | 150 | 119 | 0 | 0 | 0 | 52 | 321 |

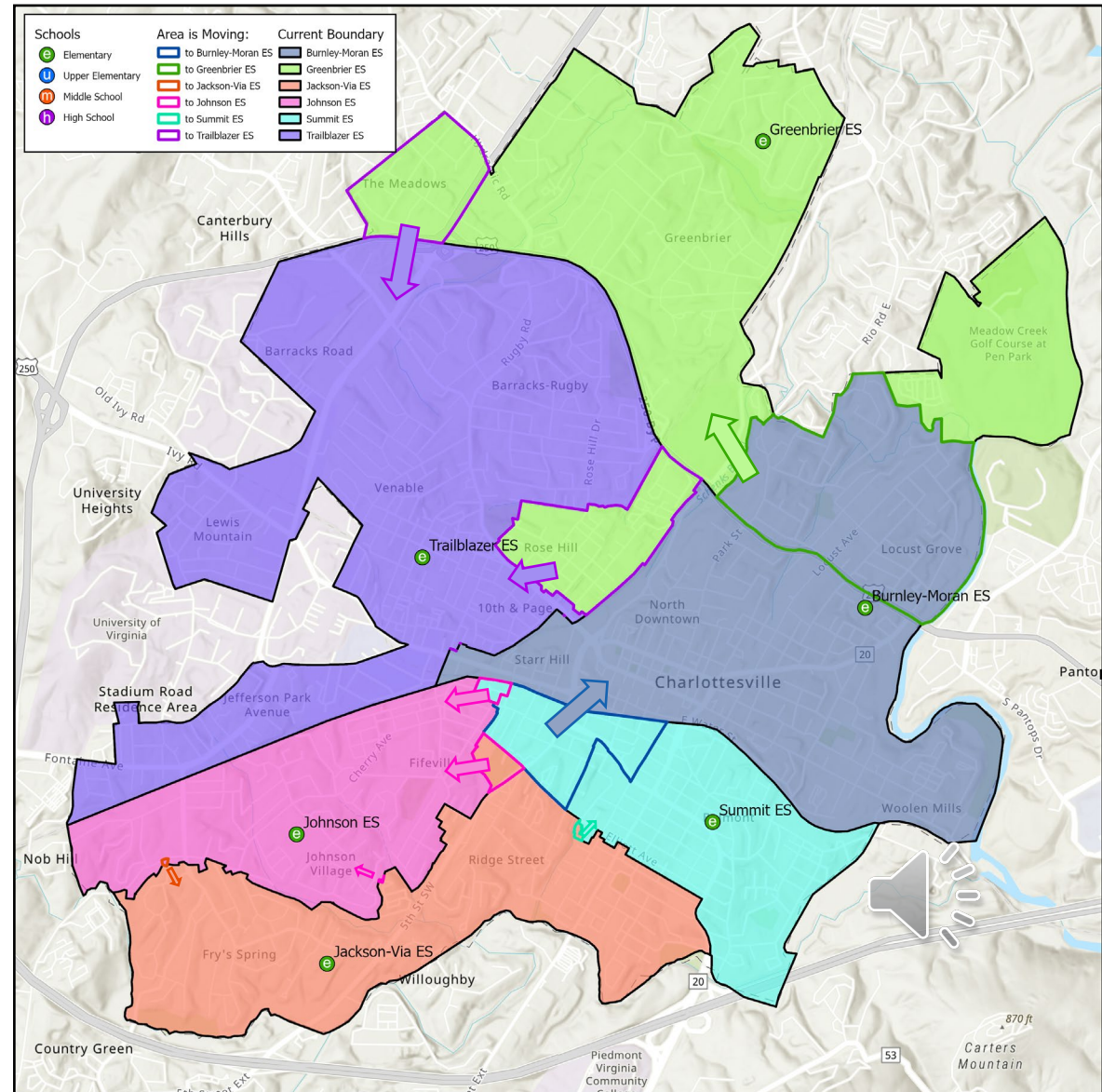
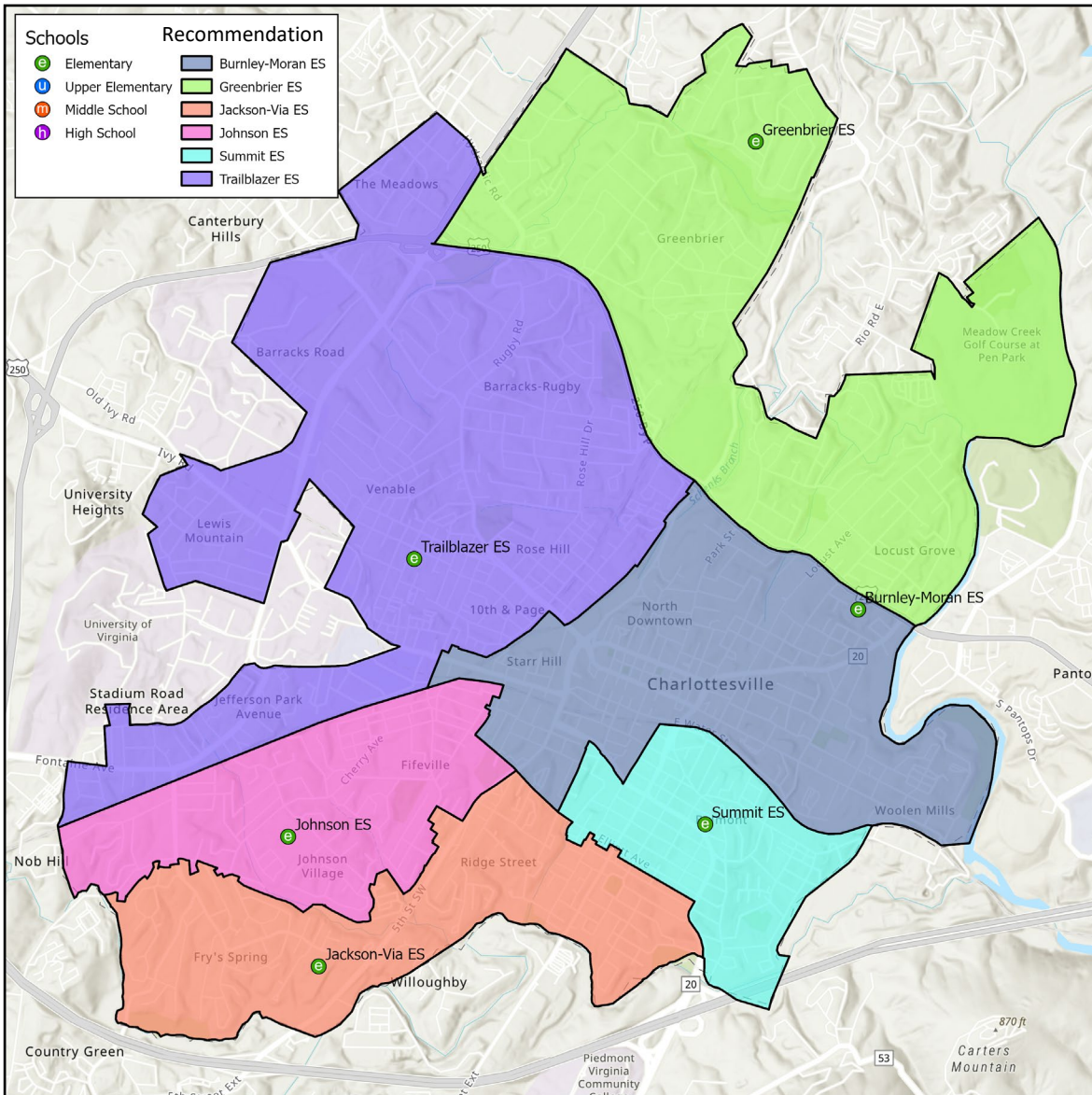
Recommendation



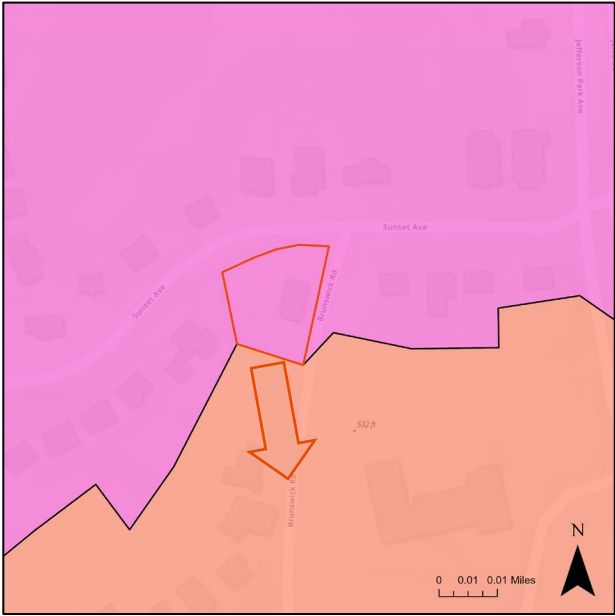
Reasoning:

- Addresses both capacity (future overutilization) and socioeconomic segregation concerns at Summit Elementary
- Leaves additional space at Johnson Elementary and Summit Elementary, the two schools with the highest low-socioeconomic and EL percentages (resource rooms, intervention space, etc.)
- Balances future utilizations of schools
- Leaves much of the Division unchanged (83%)
- The majority of changes will not occur until 2029-30, allowing all students in 1st grade or higher that have already started at a school to remain there until they move on to middle school
- Accommodates community feedback where possible
- Better utilizes Greenbrier, Burnley-Moran, and Trailblazer Elementary Schools (all currently underutilized)
- Accomplishes Board's Key Considerations for Rezoning

Recommendation



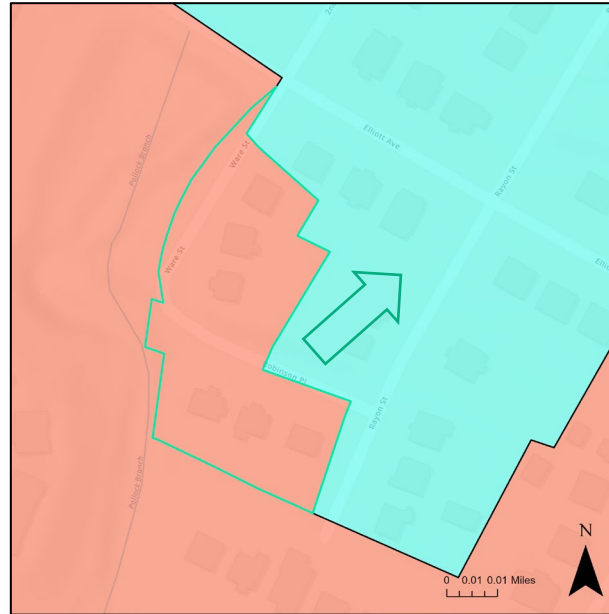
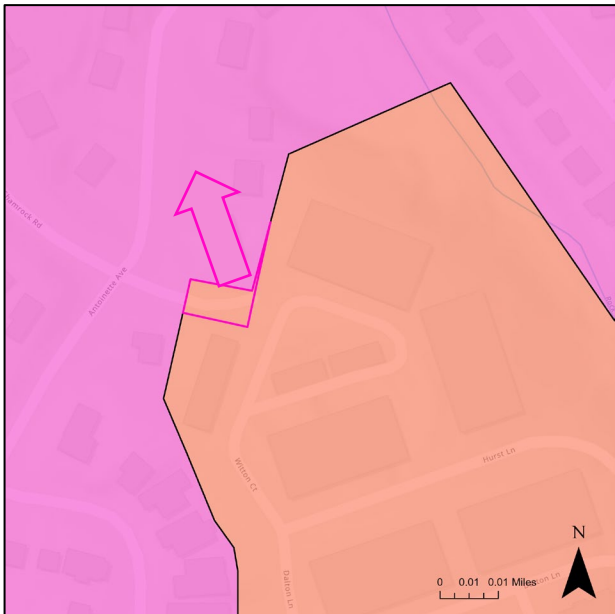
Recommendation: No students Impacted



Johnson ES to Jackson-Via ES
Parcel at corner of Brunswick Rd & Sunset Ave
Street continuity (all of Brunswick Rd would attend Jackson-Via)

Not listed: Tonsler Park; Jackson-Via ES to Johnson ES

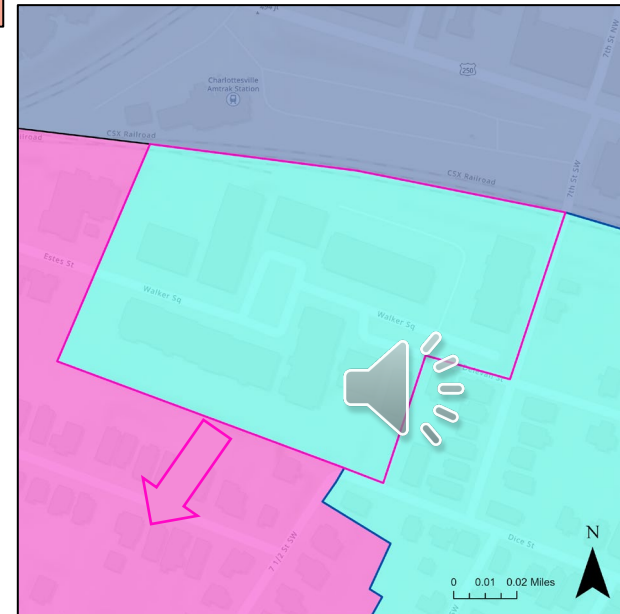
Jackson-Via ES to Johnson ES
No houses impacted; portion of Shamrock Rd that dead ends into Beacon on 5th apartments



Jackson-Via ES to Summit ES
All homes on Ware St & Robinson Pl (no outlet except into Summit boundary) would attend Summit

Phasing Recommendation:
2025-26 or ASAP

Summit ES to Johnson ES
The Condominiums at Walker Square, only outlet is onto Estes St into Johnson boundary



Recommendation

Kindlewood & Streets West of Kindlewood (currently zoned to Summit)

- Moves from Summit ES to Burnley-Moran ES
- Better balances socioeconomics among schools
- Allows room for growth at Summit (expected to be the hardest hit by developments)

2027-28

2029-30

Kindlewood

Area between Cherry Ave/Elliott St & RR tracks
Includes Oak St, Dice St, Burnett St,
6 1/2 St, 6th St, 5th St, Ridge St

Phasing Recommendation:
Streets West of Kindlewood: 2027-28

Allows space for some developments
+ Kindlewood PH 2 & 3

Phasing Recommendation:
Kindlewood: 2029-30

Ph4 is projected to be completed in Oct. 2030, some units may come online before this

Recommendation

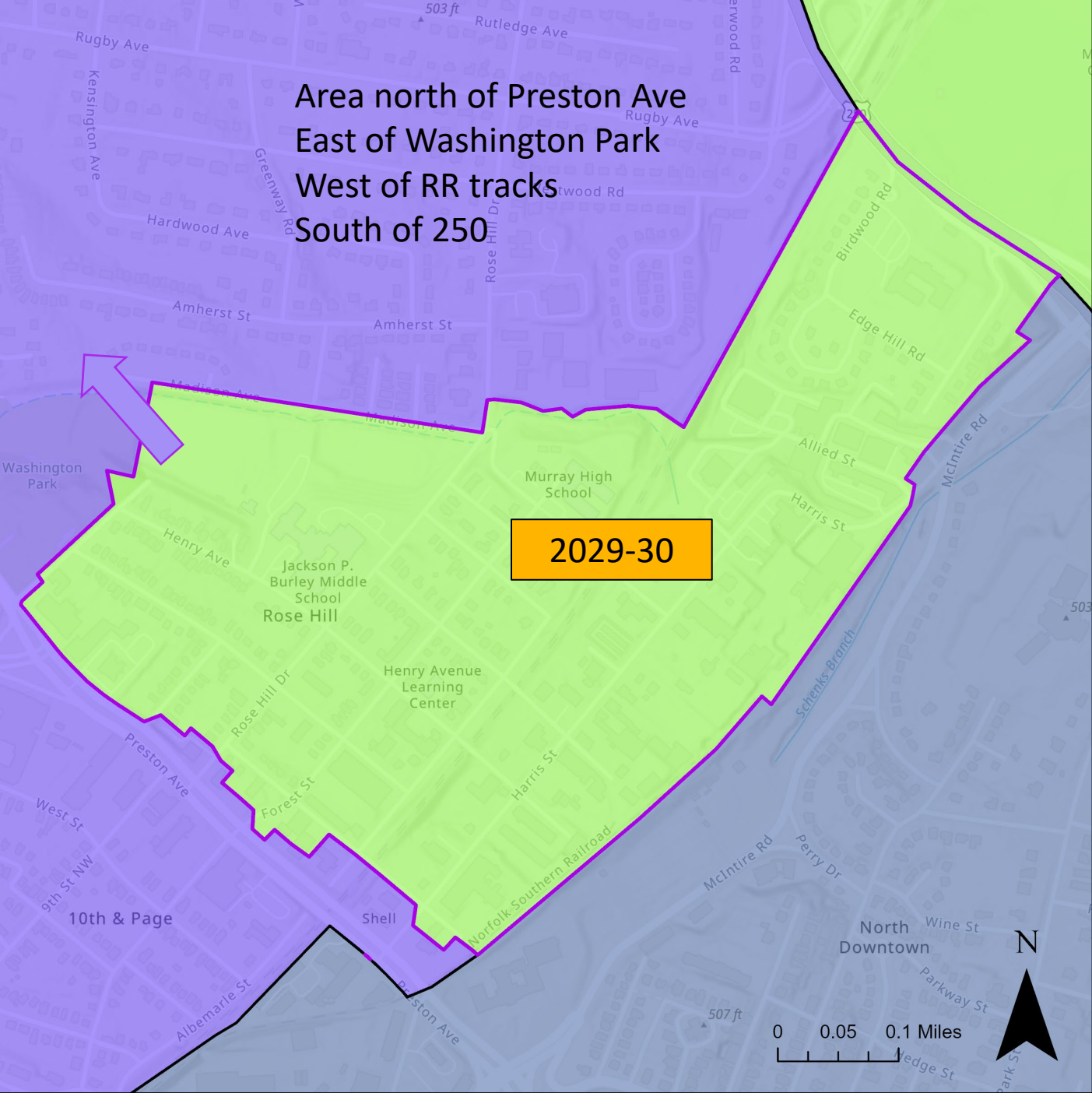
All Homes South of 250 currently zoned to Greenbrier (Rose Hill and Birdwood areas)

Moves from Greenbrier ES to Trailblazer ES

Moves these students to a school closer to home

250 as a boundary line is efficient for transportation

**Phasing Recommendation:
2029-30**



Recommendation

All Homes North of 250 currently zoned to Burnley-Moran

(Locust Grove and Park Street area)

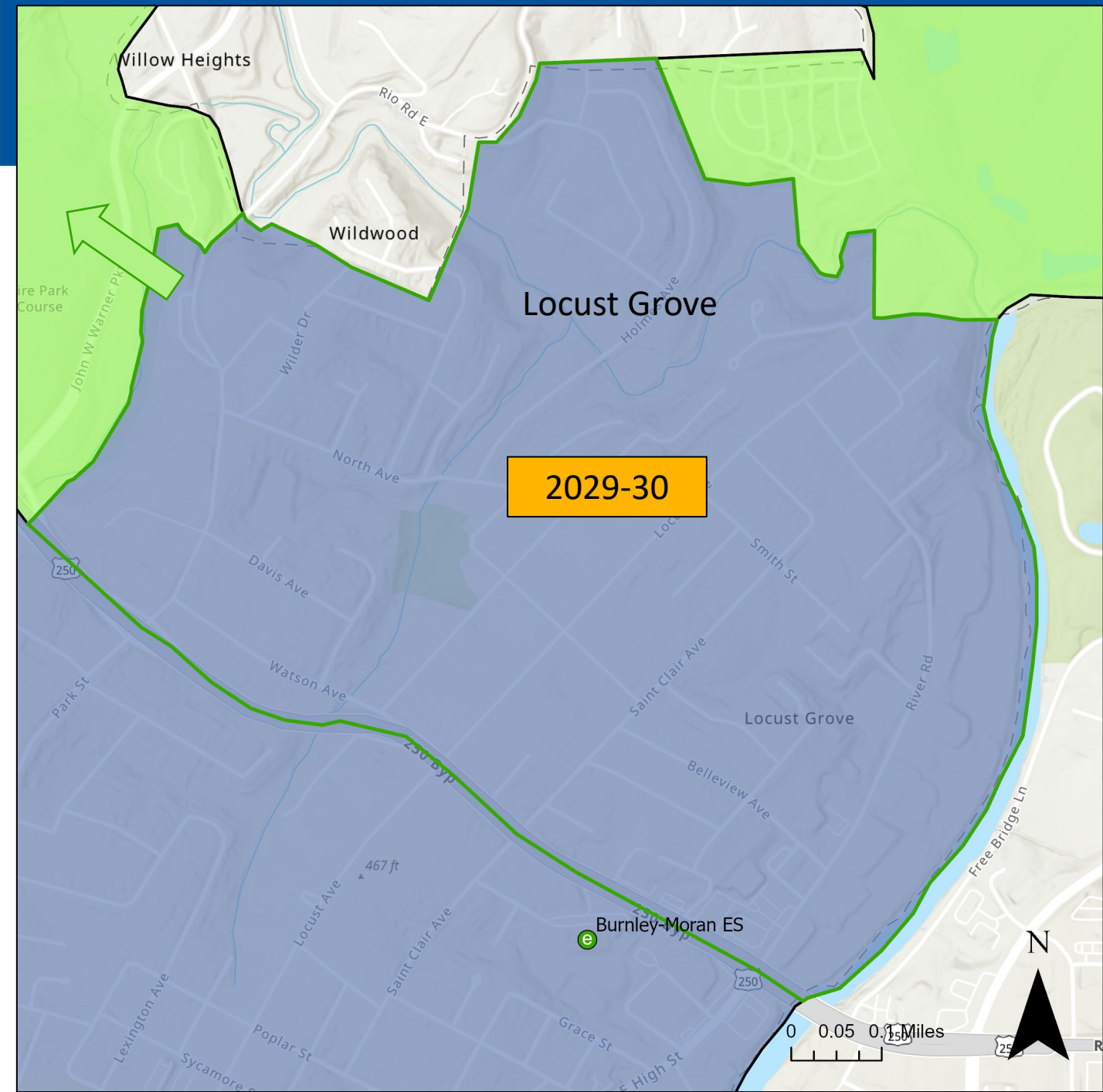
Moves from Burnley-Moran ES to Greenbrier ES

Burnley-Moran cannot take on students from Summit and continue to support its current enrollment

250 as a boundary line is efficient for transportation

2029-30

Phasing Recommendation:
2029-30



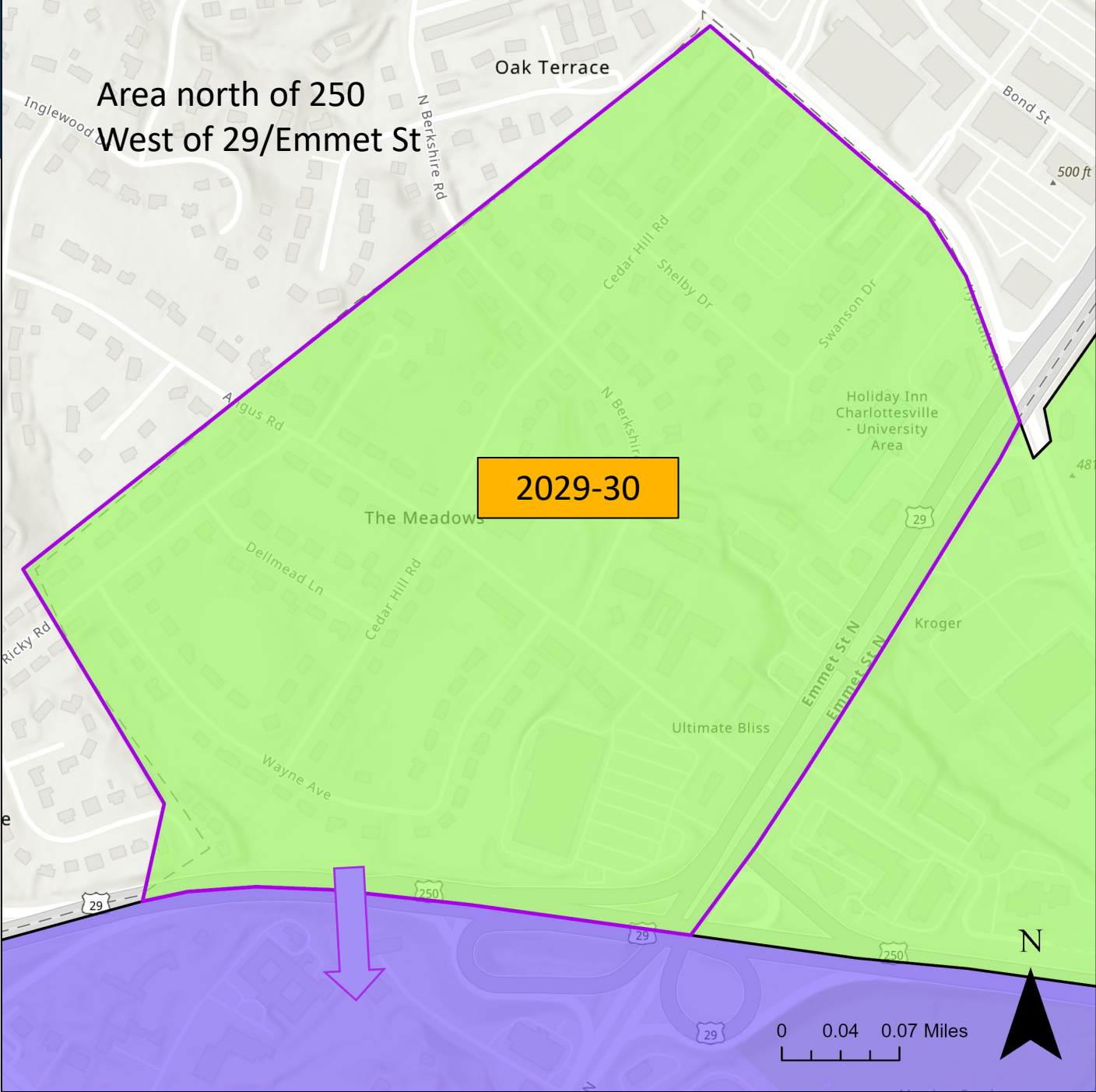
Recommendation

The Meadows Neighborhood

Moves from Greenbrier ES to Trailblazer ES

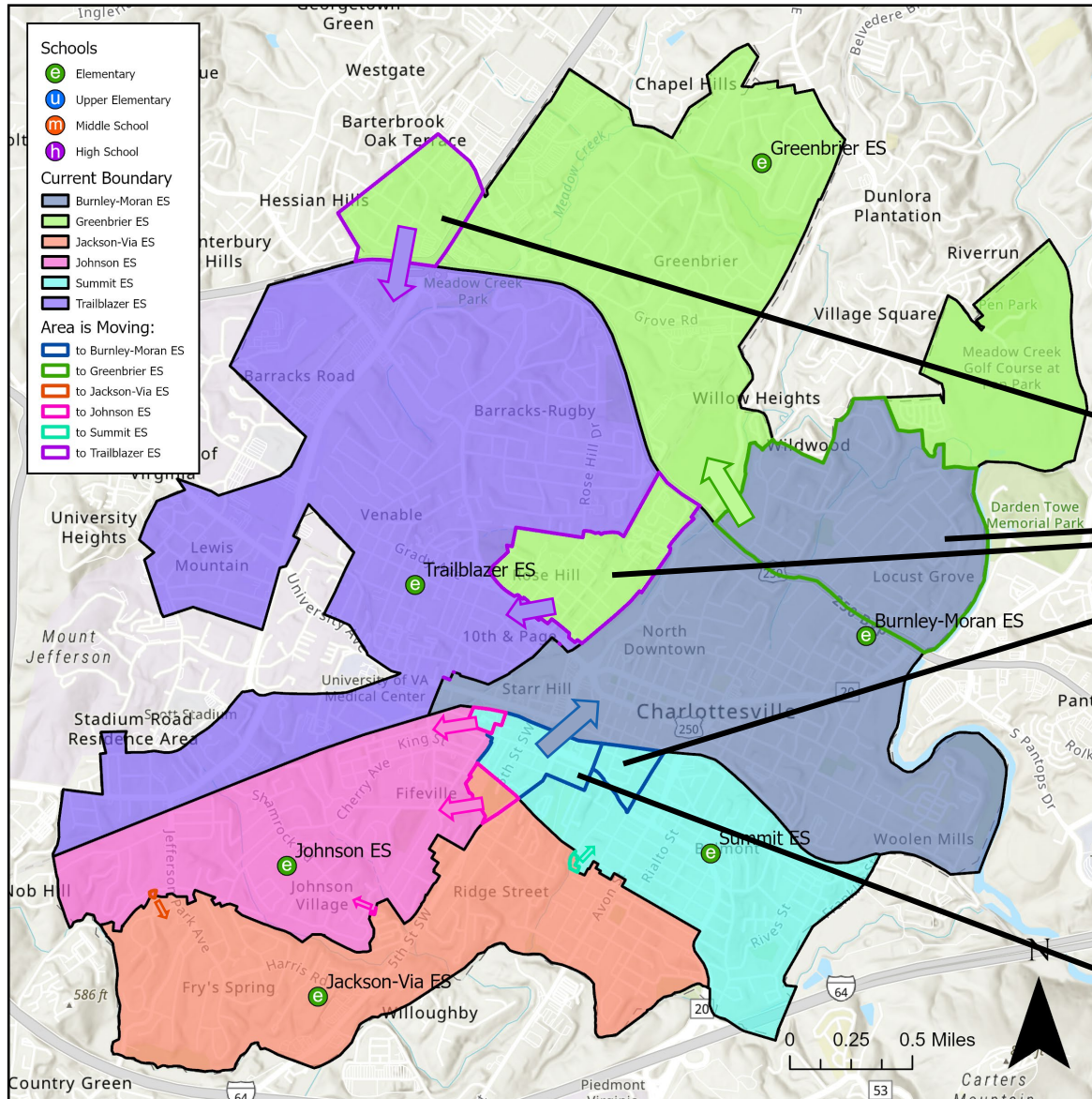
Area is stuck between two major roads; no possibility of walking

Phasing Recommendation:
2029-30



Recommendation

School Locator Tool:



2029-30

1st graders and above will finish at their current schools

Note: priority exemption recommendation would likely allow 24-25 KG to finish at the school in which they start.

2027-28

Next Steps



How to Learn More and Give Feedback

- **Rezoning Community Q&A:** *Tuesday, February 4, 5-6pm, Summit Elementary.* Community members are invited to ask specific questions to make sure they fully understand the proposal. Questions can be broad or very specific about timelines or impact to your family.
- **Rezoning Community Feedback Meeting:** *Tuesday, February 11, 5-7pm, CHS.* Community members are invited to provide in-person comments on the recommendation – or submit comments in writing via a survey.
 - **Note:** This feedback will be provided to the Board as they make their decision.



School Board Timeline

- **Thursday, February 6, 5pm:** The Board meeting will feature an overview of the recommendation to help inform the public.
- **Thursday, March 6, 5pm:** Rezoning will be a discussion item for the Board meeting.
- **Thursday, March 27, 5pm:** Rezoning will likely be scheduled for a vote at this Board meeting.



Thank you!



WOOLPERT
ARCHITECTURE | ENGINEERING | GEOSPATIAL