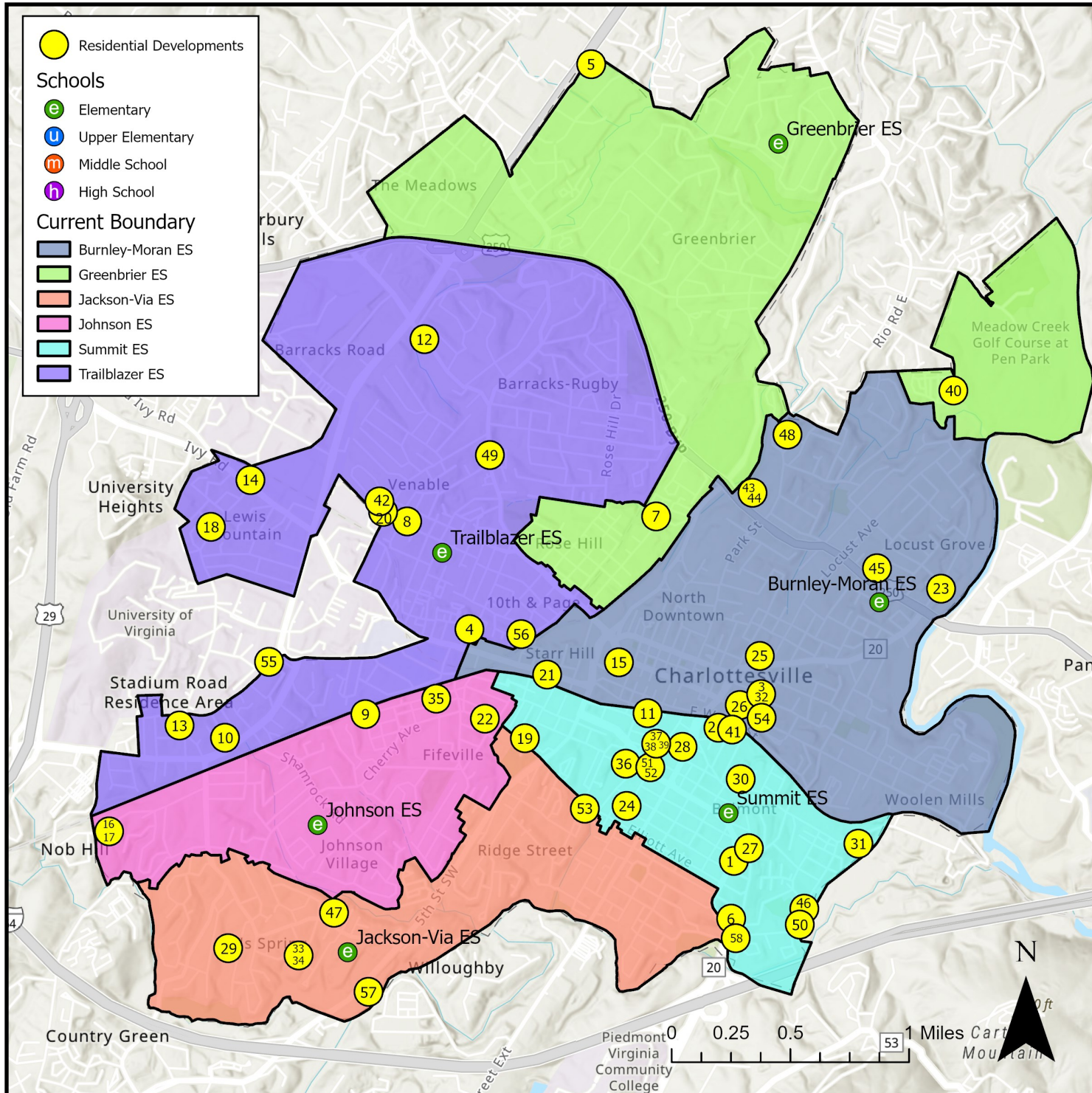


Residential Developments within Charlottesville City Schools



Map ID	Project Entity	Development Name	Housing Type	Units	Approx. Timeline/Status	Likelihood (provided by City)
1	City	0 Monticello Ave	Multi-Family	344	In Review	Maybe (50%)
2	City	100 Avon	Multi-Family	79	Final Approval	Unlikely (25%)
3	City	1011 East Jefferson	Multi-Family	124	Comments Sent	Maybe (50%)
4	POAH	10th & Wertland (Page)	Multi-Family	100	Unknown	Probably (75%)
5	City	1185 Seminole Trail	Multi-Family	250	Comments Sent	Probably (75%)
6	City	1201 Druid Ave	Multi-Family	9	Under Construction	Yes (100%)
7	City	1223 Harris	Multi-Family	120	Preliminary Approval	Unlikely (25%)
8	City	1609 Gordon	Multi-Family	9	In Review	Maybe (50%)
9	City	1613 Grove St.	Multi-Family	28	Comments Sent	Unlikely (25%)
10	City	2005 JPA	Multi-Family	119	Final Approval	Yes (100%)
11	City	201 Garrett	Multi-Family	80	Preliminary Approval	Unlikely (25%)
12	City	2030 Barracks	Multi-Family	24	In Review	Maybe (50%)
13	City	209 Maury	Multi-Family	34	Comments Sent	Maybe (50%)
14	City	2117 Ivy	Multi-Family	231	In Review	Yes (100%)
15	City	218 West Market St	Multi-Family	90	Preliminary Approval	Unlikely (25%)
16	City	240 Stribling	Multi-Family	96	Comments Sent	Probably (75%)
17	City	240 Stribling	SFA	73	Comments Sent	Probably (75%)
18	City	303 Alderman	SFA	6	Comments Sent	Maybe (50%)
19	Piedmont	501 Cherry Ave.	Apartments	71	Complete Spring/summer 2027	Yes (100%)
20	City	513 Rugby	Multi-Family	12	Comments Sent	Maybe (50%)
21	City	612 West Main St	Multi-Family	46	Comments Sent	Unlikely (25%)
22	City	808 Cherry	Multi-Family	6	Final Approval	Unlikely (25%)
23	City	900 River Road	Multi-Family	77	Comments Sent	Probably (75%)
24	City	915 6th Street SE	Multi-Family	21	Comments Sent	Yes (100%)
25	City	915 E High St	Multi-Family	192	Preliminary Approval	Maybe (50%)
26	City	925 East Market	Multi-Family	57	Final Approval	Unlikely (25%)
27	City	930 Monticello Rd	Multi-Family	11	Under Construction	Yes (100%)
28	CRHA	Avon/Lew Garage	Apartments	Unknown	Unknown	Yes (100%)
29	City	Azalea Springs	Single-Family	45	Comments Sent	Yes (100%)
30	City	Belmont Condominiums	Multi-Family	130	Comments Sent	Probably (75%)
31	Piedmont	Carlton Trailer Park	Home ownership/apts	175	Complete 2030 at the earliest	Yes (100%)
32	City	East Jefferson Medical Building	Multi-Family	14	Comments Sent	Yes (100%)
33	City	Flint Hill PUD	Multi-Family	16	Under Construction	Yes (100%)
34	City	Flint Hill PUD	SFA	37	Under Construction	Yes (100%)
35	City	Grove Street PUD	Multi-Family	6	Under Construction	Yes (100%)
36	City	IX Art Park Multifamily	Multi-Family	280	In Review	Maybe (50%)
37	Piedmont	Kindlewood Phase 2	Apartments/Townhomes	30	Complete October 2026	Yes (100%)
38	Piedmont	Kindlewood Phase 3	Apartments/Townhomes	32	Complete October 2028	Yes (100%)
39	Piedmont	Kindlewood Phase 4	Apartments/Townhomes	75-150	Complete October 2030	Yes (100%)
40	City	Lochlyn Hill Phase 4	Single-Family	6	Under Construction	Yes (100%)

Map ID	Project Entity	Development Name	Housing Type	Units	Approx. Timeline/Status	Likelihood (provided by City)
41	City	Lyman Street Residences	Single-Family	3	Comments Sent	Unlikely (25%)
42	City	Lyndhall Apartments	Multi-Family	16	In Review	Maybe (50%)
43	Piedmont	MACAA Site off Park St.	Apartments	66	Complete Summer 2027 (earliest)	Yes (100%)
44	Piedmont	MACAA Site off Park St.	Townhomes	28	Complete Summer 2027 (earliest)	Yes (100%)
45	City	Mount View PUD	Multi-Family	59	Preliminary Approval	Maybe (50%)
46	City	Nassau Street	SFA	16	Under Construction	Yes (100%)
47	City	Naylor Street Subdivision	Single-Family	7	Under Construction	Yes (100%)
48	Piedmont	Park St. Christian Church	Apartments	50	Complete Late 2027, early 2028; Winter 27-28	Yes (100%)
49	City	Preston Commons	SFA	10	Preliminary Approval	Yes (100%)
50	City	Rootstock Farms	Multi-Family	28	Comments Sent	Maybe (50%)
51	CRHA	Sixth Street Other Phases (not yet approved)	Apartments	40-45	Complete 2028-2029	Yes (100%)
52	CRHA	Sixth Street Phase 1	Apartments	41	Complete December 2026	Yes (100%)
53	CRHA	South First Street Phase 2	Apartments	96	Complete 2026	Yes (100%)
54	City	The Vue from East Market	SFA	10	Comments Sent	Maybe (50%)
55	City	VERVE	Multi-Family	468	Final Approval	Yes (100%)
56	CRHA	Westhaven	Apartments	126	Complete 2029	Yes (100%)
57	City	Willoughby	Multi-Family	84	Comments Sent	Maybe (50%)
58	City	New Belmont Apartments	Apartments	260	Unknown	Unknown