

# Charlottesville City Schools

K-5 Rezoning Process

Background Data Packet

2024-25 School Year



**CHARLOTTESVILLE**  
CITY SCHOOLS

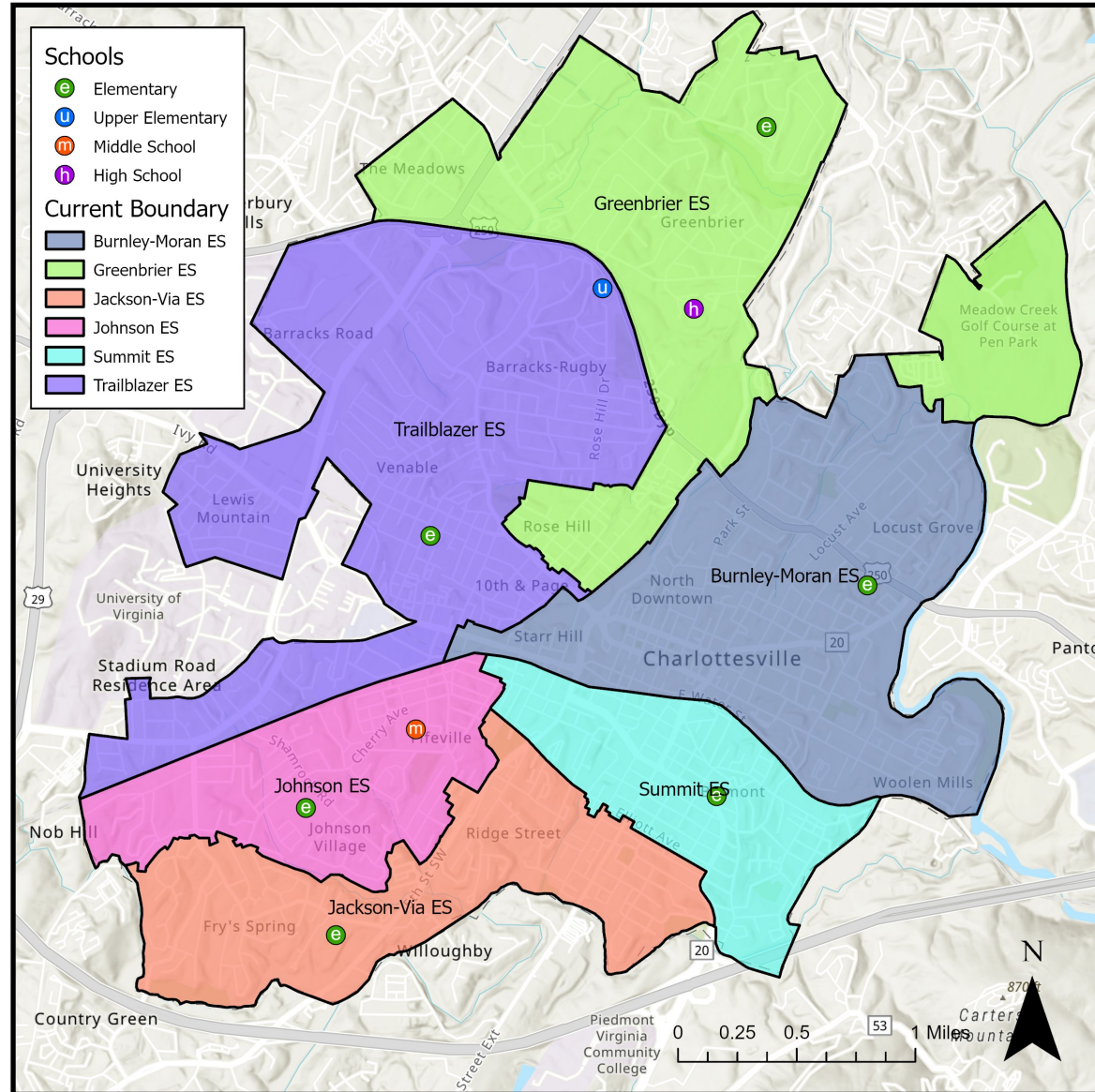




The Charlottesville City Schools is beginning a rezoning process to better balance enrollments among schools and to adapt to the new K-5 grade configuration at the elementary schools (the current grade configuration is PK-4 at the elementary level). The information in this packet is meant to provide information about the current state of the schools and provide datasets related to the rezoning process. The boundaries determined in this process will be implemented in the fall of 2026.

### Rezoning Terms:

- **2025 Capacity:** The number of K-5 students that each school can effectively educate. This is a fluid number that changes year after year based on the programs that exist within each school (special education, intervention, etc.).
- **Live-In Enrollment:** The number of K-5 students that reside within the current or option boundary.
- **Out of Division Enrollment:** The number of K-5 students that reside outside of the greater CCS boundary that attend each school. We anticipate a similar number of out of division students will continue to attend CCS schools moving forward.
- **Utilization:** The enrollment (live-in enrollment + out of division enrollment) divided by the capacity.
- **Low SES %:** This details the socioeconomic breakdown of each school, based on students who are directly certified. Direct certification is similar to the free/reduced lunch program and is an indication of students coming from lower economic backgrounds.
- **EL %:** This shows the percentage of each student population that receive English as a second language services.
- **SPED %:** This shows the percentage of students that receive special education services for more than 50% of the school day.
- **+Development Utilization:** This shows the estimated enrollments for each school including the various residential developments that fall within each boundary. The student potential estimates for each development are calculated using student yields or student generation rates, which are applied to unit counts for each of the residential developments to determine the student potential from each development.

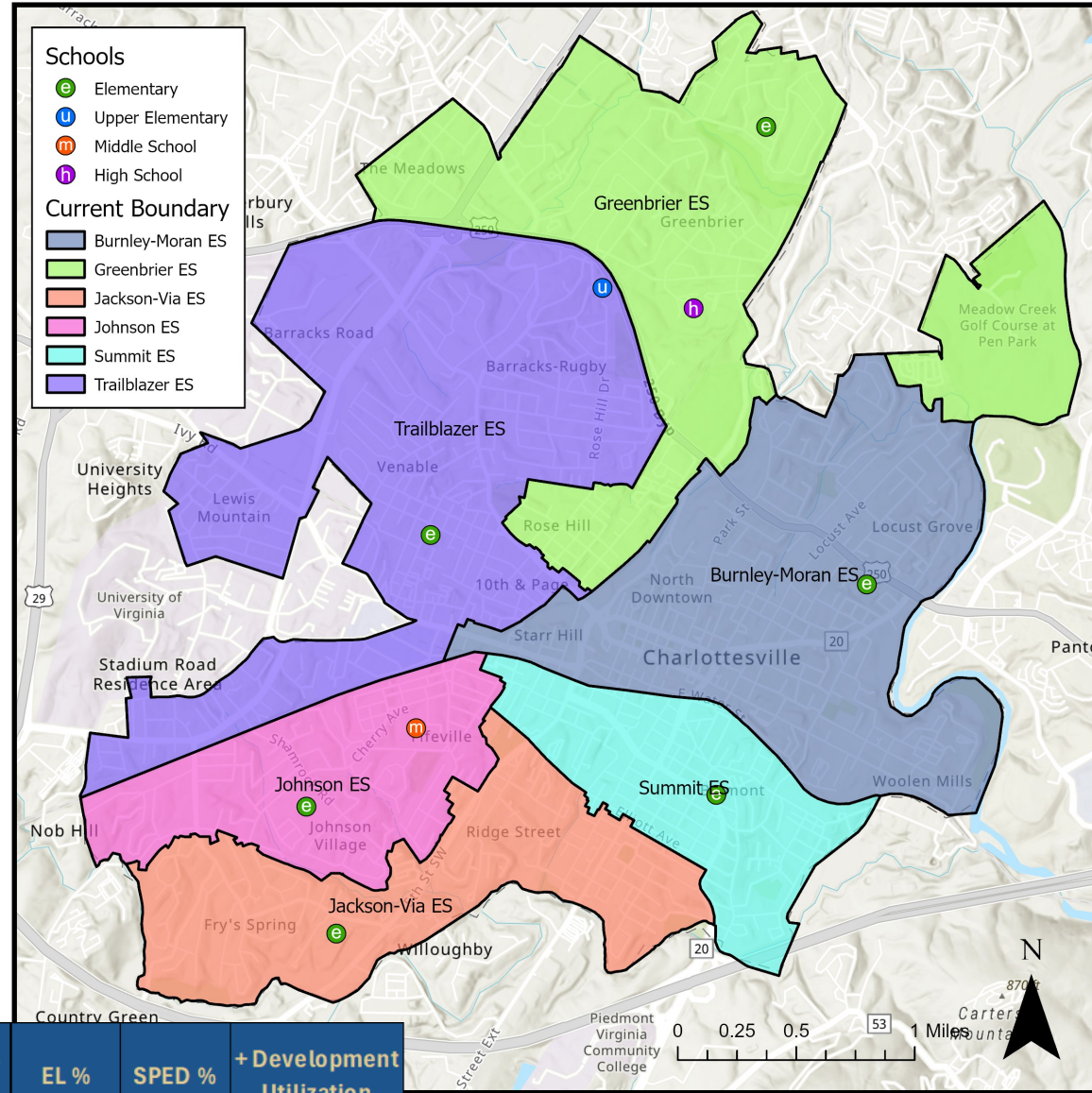




The table below details enrollment metrics for each school within the Division for the current (2024-25) boundaries.

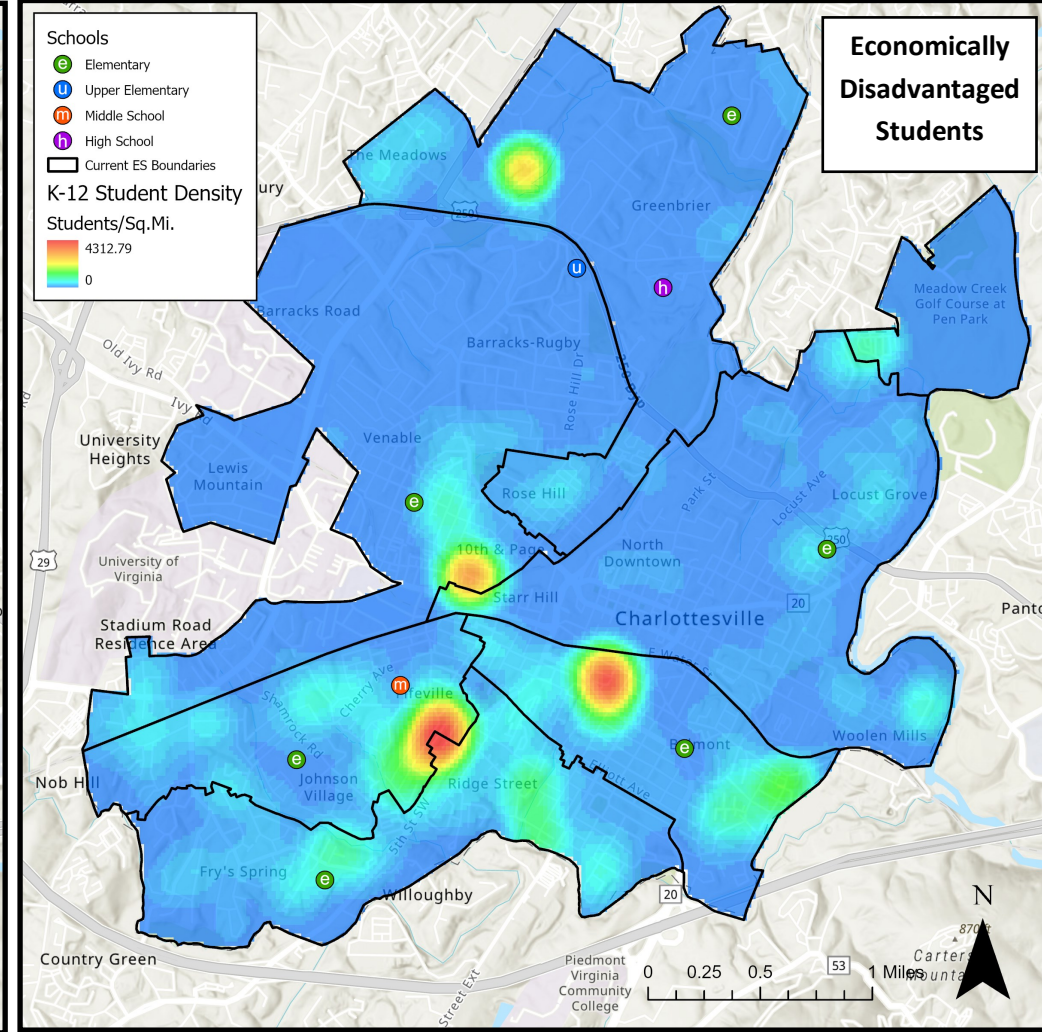
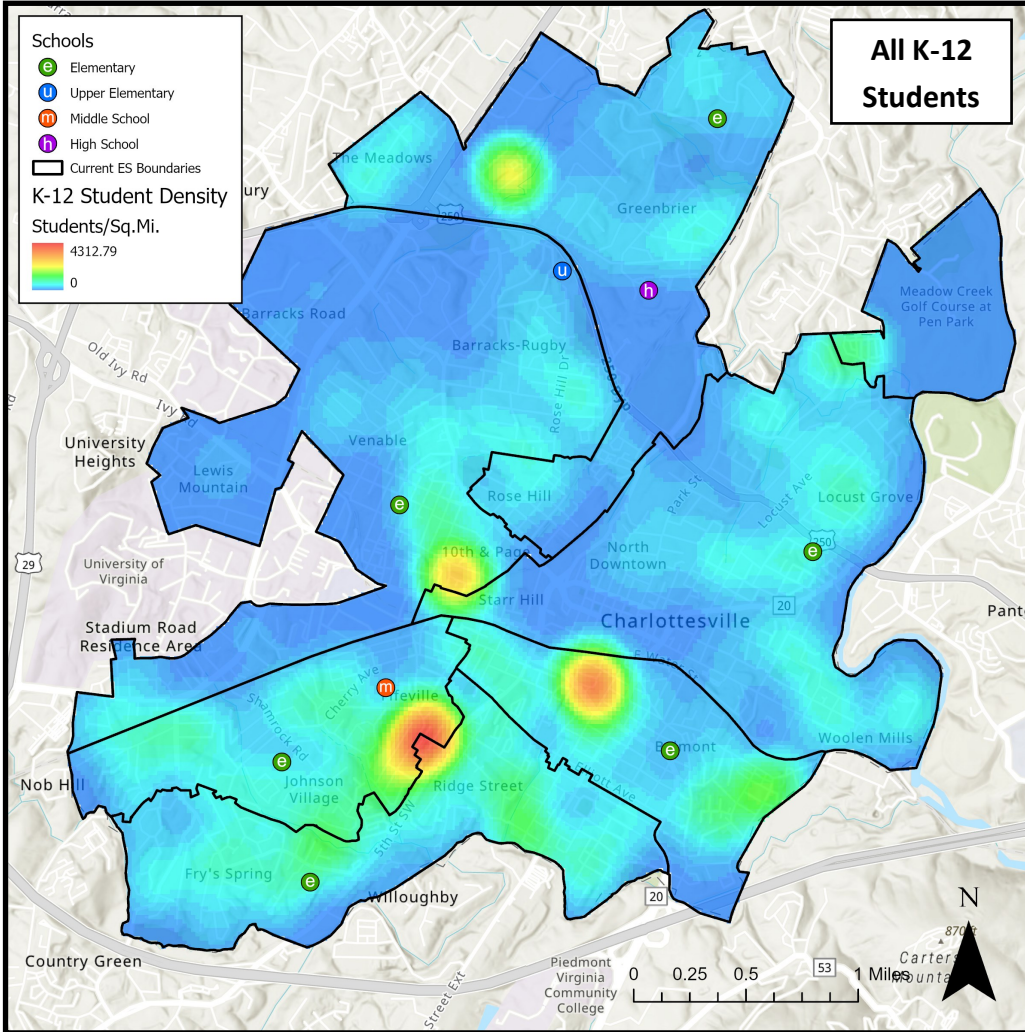
### Future Facility Changes:

- Walker Upper Elementary, which currently houses grades 5 and 6 for the entire Division, will become a Pre-K center.
- All 5th grade students will remain at their neighborhood elementary school, and 6th grade students will move to Buford Middle School (BMS will be renamed Charlottesville Middle School starting in the 2025-26 school year).

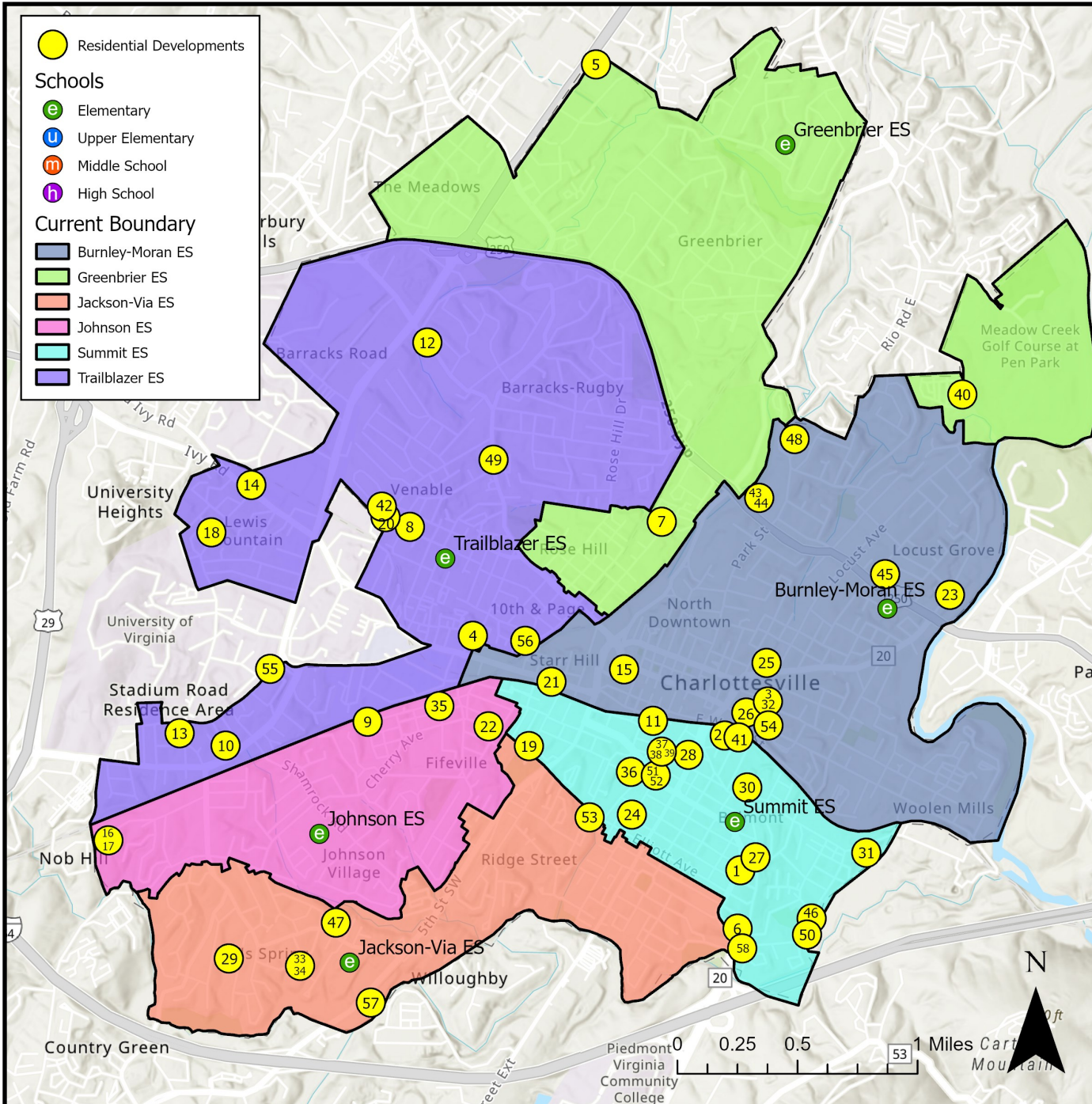


School	2025 Capacity	Live-In Enrollment	Out of Division Enrollment	Utilization	Low SES %	EL %	SPED %	+ Development Utilization
Burnley-Moran ES	512	290	12	57%	34%	13%	3%	68%
Greenbrier ES	464	237	43	51%	49%	27%	3%	62%
Jackson-Via ES	470	371	3	79%	58%	22%	4%	86%
Johnson ES	426	328	19	77%	59%	27%	4%	78%
Summit ES	388	301	4	78%	76%	24%	5%	141%
Trailblazer ES	512	316	9	62%	45%	14%	5%	78%
<b>TOTAL</b>	<b>2,772</b>	<b>1,843</b>	<b>90</b>	<b>66%</b>	<b>55%</b>	<b>22%</b>	<b>4%</b>	<b>84%</b>





The map on the left details the density of all CCS students residing within the Division. Areas in red have a higher student density, or more students per square mile, while any dark blue shows areas of lower student density, or fewer students per square mile. The map on the right details the student density of students who are economically disadvantaged. Both maps are on the same scale, meaning that each color represents the same student density in both maps.



The map on the left details the known housing developments that are planned, proposed, approved, or already under construction within the Division.

These developments, along with enrollment projections, will be used within this process to inform the longevity of any boundary options or scenarios created.

The table below shows the 2023 student yields, or students per housing unit, separated by housing type and geographic area. These yields are used to forecast the number of students that housing developments are likely to produce.

The “+Development Utilization” column in the metrics table on page includes the forecasted utilization when we factor in existing enrollment with the developments. It is important to note that the development information is likely high because it assumes no fluctuation in existing enrollments.

2023 Student Yields by Housing Type			
Housing Type	University Zone	Outside University Zone	CRHA
	Apartments	0.01	0.25
Single-Family Attached	0.12	0.30	0.82
Single-Family	0.12	0.22	0.56





Charlottesville City Schools  2024-25 K-5 Live/Attend		School of Attendance								Transfer Out	Transfer Out %
		Burnley-Moran Elementary School	Greenbrier Elementary School	Jackson-Via Elementary School	Johnson Elementary School	Summit Elementary School	Trailblazer Elementary School	Walker Upper Elementary School	Lugo-McGinness Academy		
Boundary of Residence	Burnley-Moran ES	276	0	5	5	0	3	32	3	16	5%
	Greenbrier ES	3	209	5	0	0	5	43	3	16	6%
	Jackson-Via ES	6	5	335	7	8	1	53	6	33	8%
	Johnson ES	1	9	7	293	1	4	47	8	30	8%
	Summit ES	4	1	9	2	270	3	60	8	27	8%
	Trailblazer ES	6	1	8	4	3	295	31	7	29	8%
	Out of Division	12	43	3	19	4	9	19	0	-	-
Live & Attend		276	209	335	293	270	295	266	-	Total K-5 Students: 2,204	
Transfer In		32	59	37	37	16	25	19	35		
Transfer In %		10%	22%	10%	11%	6%	8%	7%	100%		

The live/attend analysis identifies where students reside and compares it to the school in which they attend. The columns illustrate the school of attendance, and the rows illustrate the attendance boundary. The chart can be read both vertically and horizontally.

**Example:** Burnley-Moran ES

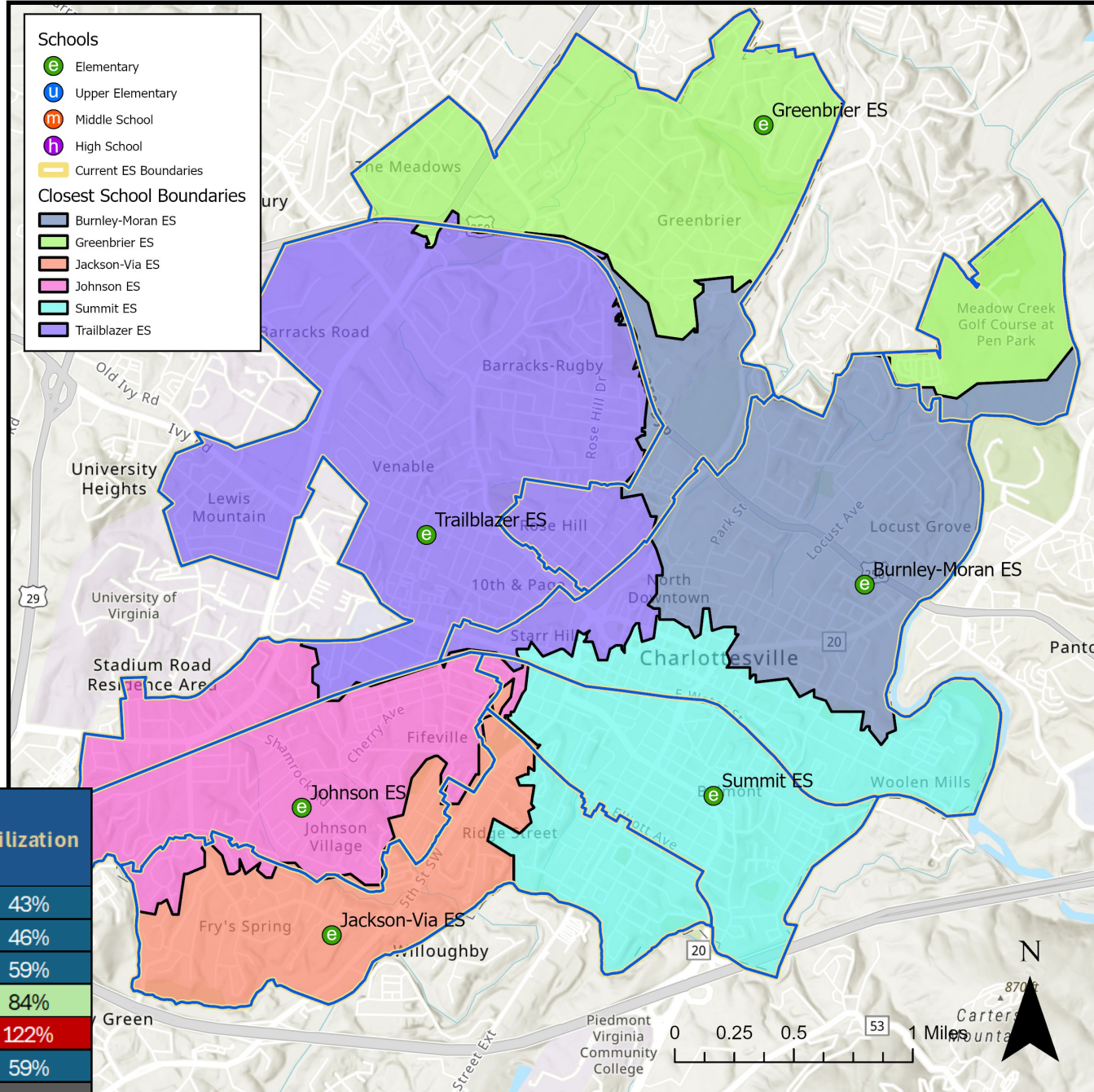
There are 276 students that both live in the boundary for and attend Burnley-Moran Elementary. Of all the K-5 students that live within the BMES boundary, 5 students attend Jackson-Via ES, 5 students attend Johnson ES, 3 students attend Trailblazer ES, and 3 students attend the Lugo-McGinness Academy. There are 32 5th grade students that reside within the BMES boundary that currently attend Walker Upper Elementary School. 15% of the students that live within the Burnley-Moran ES boundary transfer out to a different school (this value DOES NOT include the 5th grade students currently attending Walker Upper ES). 10% of the current Burnley-Moran Elementary student population transfers in from either out of the division or from a different elementary boundary.





### This is not an option.

The map on the right shows what the boundaries would look like if every student attended their geographically closest elementary school based on the existing road network. The metrics in the table below detail the utilization metrics for the closest school boundaries. If CCS were to adopt this boundary plan, Summit Elementary would be utilized at 122%, while Burnley-Moran ES would be utilized at 43%. This information will be used to assist with the boundary creation process, but it is important to note that not every student will be able to attend their geographically closest school.



School	2025 Capacity	Live-In Enrollment	Utilization
Burnley-Moran ES	512	219	43%
Greenbrier ES	464	213	46%
Jackson-Via ES	470	278	59%
Johnson ES	426	357	84%
Summit ES	388	472	122%
Trailblazer ES	512	304	59%
<b>TOTAL</b>	<b>2,772</b>	<b>1,843</b>	<b>66%</b>

