

Charlottesville City Schools | Superintendent's Advisory Committee for Rezoning Meeting #1

October 16, 2024

Agenda

- 1 Introductions
- 2 Process Overview
- 3 Committee Roles & Responsibilities
- 4 Review Background Data
- 5 Boundary Options Review & Creation

Process Overview

Boundary Planning Process

Plan for Planning

Staff Work Group for Rezoning

Background Data

Rezoning Committee

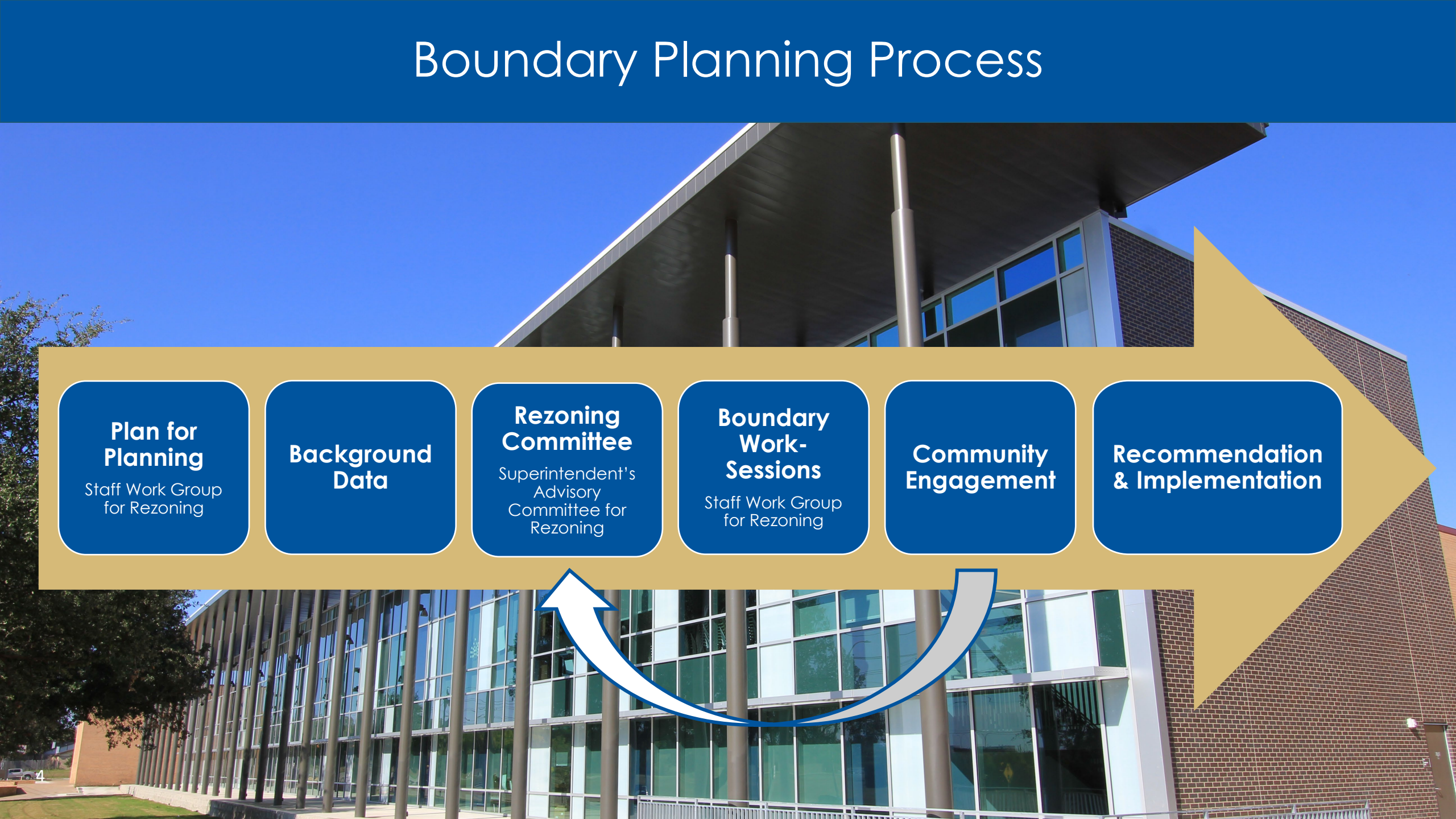
Superintendent's Advisory Committee for Rezoning

Boundary Work-Sessions

Staff Work Group for Rezoning

Community Engagement

Recommendation & Implementation



Boundary Planning Process

Plan for Planning

Staff Work Group for Rezoning

- Confirm process and timeline
- Discuss other comparable processes
- Define expectations
- Discuss any additional goals for this process

Back Data

Rezoning Committee

Superintendent's Committee for Rezoning

Boundary Work-Sessions

Staff Work Group for Rezoning

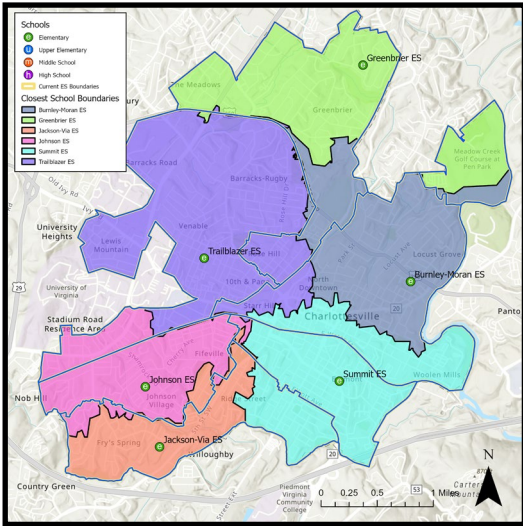
Community Engagement

Recommendation & Implementation

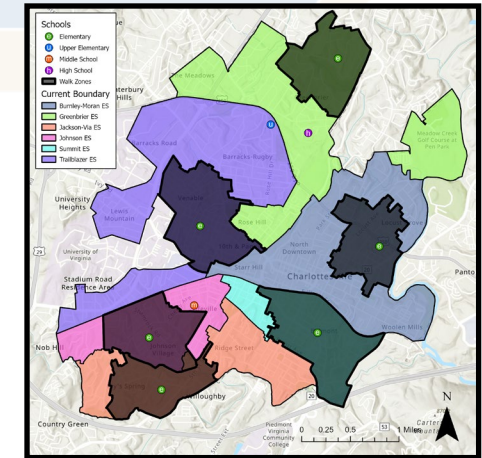
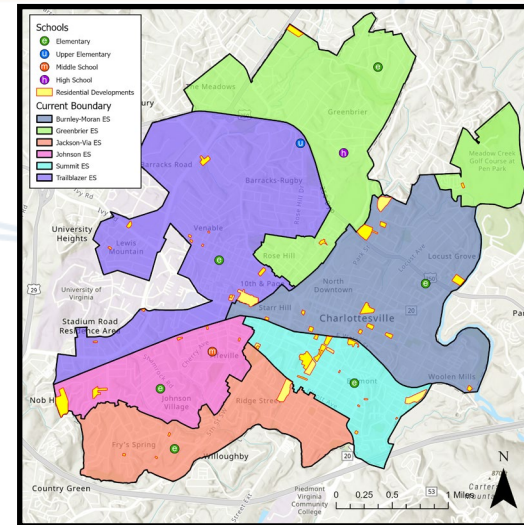
Boundary Planning Process

Background Data

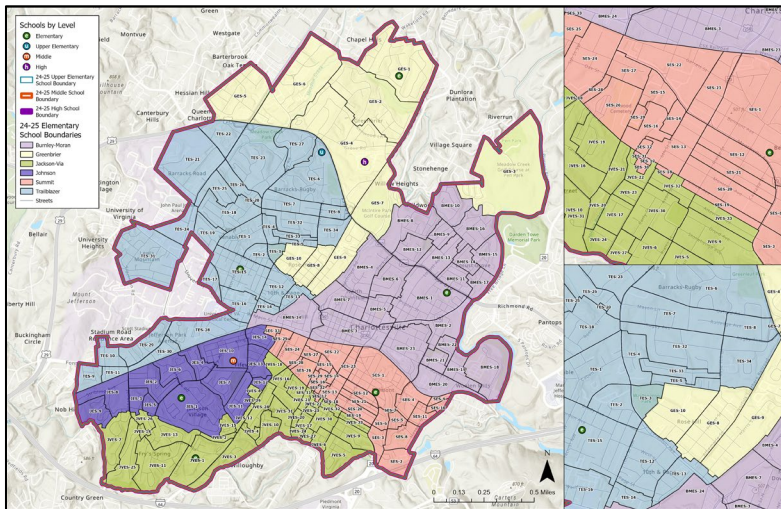
- Current state of the schools
- Closest school analysis
- Live/attend analysis
- Density maps
- Walk zones
- Residential development maps and forecasts
- Enrollment projections
- Census datasets



Charlottesville City Schools		School of Attendance								Transfer Out	Transfer Out %
		Burnley-Moran Elementary School	Greenbrier Elementary School	Jackson-Via Elementary School	Johnson Elementary School	Summit Elementary School	Trailblazer Elementary School	Walker Upper Elementary School	Lugo-McGinness Academy		
Boundary of Residence	Burnley-Moran ES	276	0	5	5	0	3	32	3	16	5%
	Greenbrier ES	3	209	5	0	0	5	43	3	16	6%
	Jackson-Via ES	6	5	335	7	8	1	53	6	33	8%
	Johnson ES	1	9	7	293	1	4	47	8	30	8%
	Summit ES	4	1	9	2	270	3	60	8	27	8%
	Trailblazer ES	6	1	8	4	3	295	31	7	29	8%
	Out of Division	12	43	3	19	4	9	19	0	-	-
Live & Attend	276	209	335	293	270	295	266	-	Total K-5 Students: 2,204		
Transfer In	32	59	37	37	16	25	19	35			
Transfer In %	10%	22%	10%	11%	6%	8%	7%	100%			



Boundary Planning Process



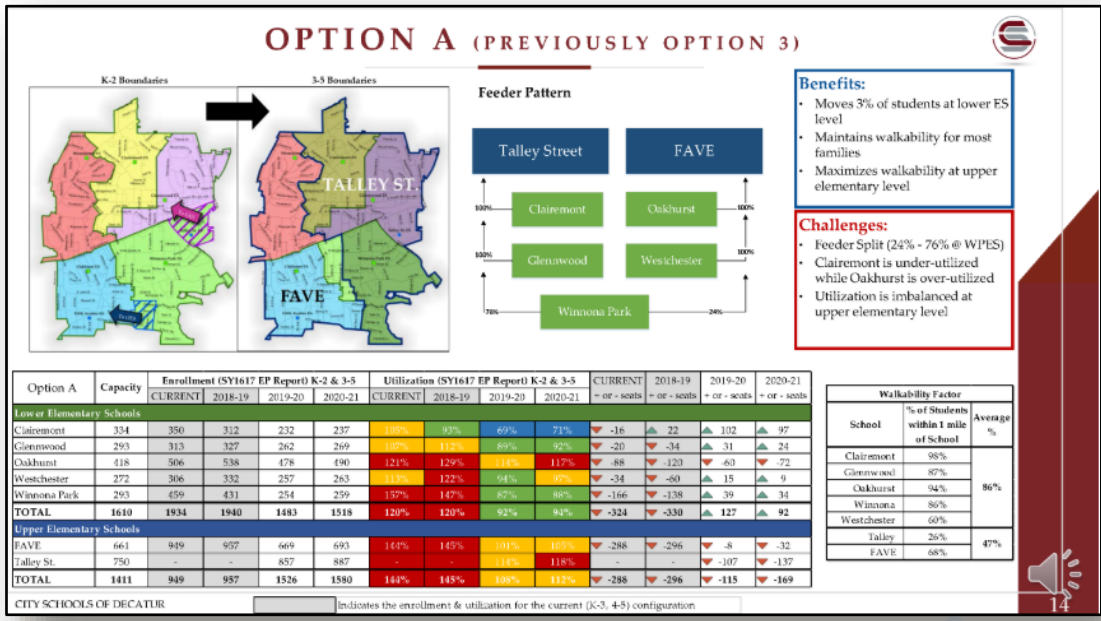
Rezoning Committee
 Superintendent's Advisory Committee for Rezoning

- Makeup: School & community stakeholders, geographically diverse, agree to consider the District as a whole and remain objective

- Committee assists in option creation
- Utilizes Board of Education's boundary planning criteria to guide options creation

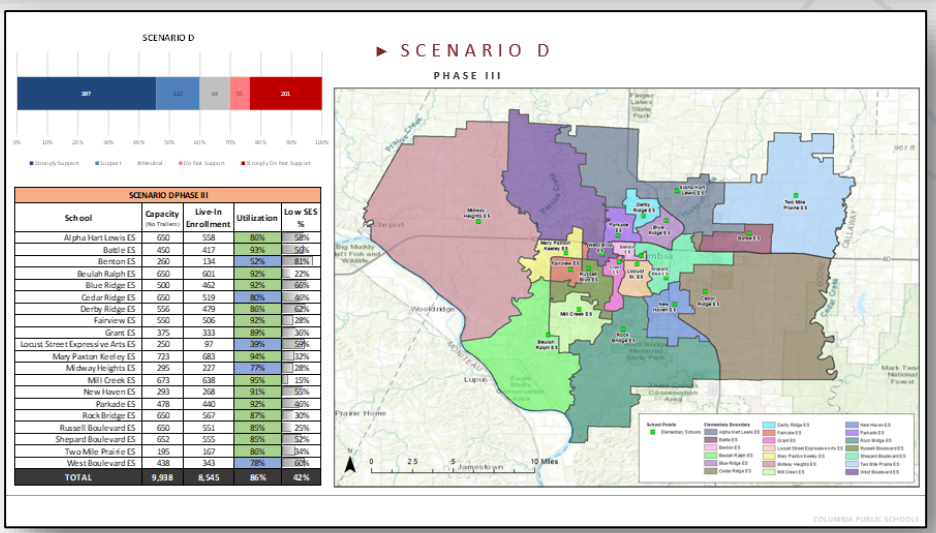
Current ES	Planning Unit ID	Option ES	School	2025 Capacity	Live-In Enrollment	Out of District Enrollment	Utilization	Low SES %	EL %	SPED %	+ Development Utilization
Burnley-Moran ES	BMES-1	Burnley-Moran ES	Burnley-Moran ES	367	331	12	90%	37%	12%	3%	111%
Burnley-Moran ES	BMES-2	Burnley-Moran ES	Greenbrier ES	415	237	43	57%	49%	27%	3%	69%
Burnley-Moran ES	BMES-3	Burnley-Moran ES	Jackson-Via ES	406	396	3	97%	58%	24%	4%	107%
Burnley-Moran ES	BMES-4	Burnley-Moran ES	Johnson ES	362	338	19	93%	60%	24%	5%	94%
Burnley-Moran ES	BMES-5	Burnley-Moran ES	Summit ES	330	260	4	79%	79%	27%	5%	148%
Burnley-Moran ES	BMES-6	Burnley-Moran ES	Traillblazer ES	354	281	9	79%	43%	15%	4%	102%
TOTAL				2,234	1,843	90	83%	55%	22%	4%	104%
				Students Moved							
						101		5%			
				Walkable Students							
						776		42%			
Current Enrollments											
School	2025 Capacity	Live-In Enrollment	Out of District Enrollment	Utilization	Low SES %	EL %	SPED %	+ Development Utilization			
Burnley-Moran ES	367	290	12	79%	34%	13%	3%	100%			
Greenbrier ES	415	237	43	57%	49%	27%	3%	69%			
Jackson-Via ES	406	371	3	91%	58%	22%	4%	101%			
Johnson ES	362	328	19	91%	60%	27%	4%	91%			
Summit ES	330	301	4	91%	76%	24%	5%	160%			
Traillblazer ES	354	316	9	89%	45%	14%	5%	112%			
TOTAL				2,234	1,843	90	83%	55%	22%	4%	104%

Boundary Planning Process



Boundary Work-Sessions
Staff Work Group for Rezoning

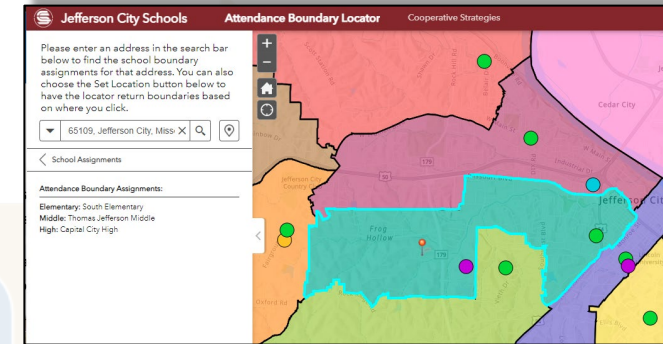
- CCS Staff team reviews options created by committee; makes adjustments & new options if necessary
- Determines which options move forward
- Ensures options follow criteria and accomplish goals



Boundary Planning Process

- Present boundary options to community for buy-in and feedback
- Ensure community understands process, reasoning behind boundary adjustments
- In-person & online feedback opportunities
- Feedback is compiled into a report

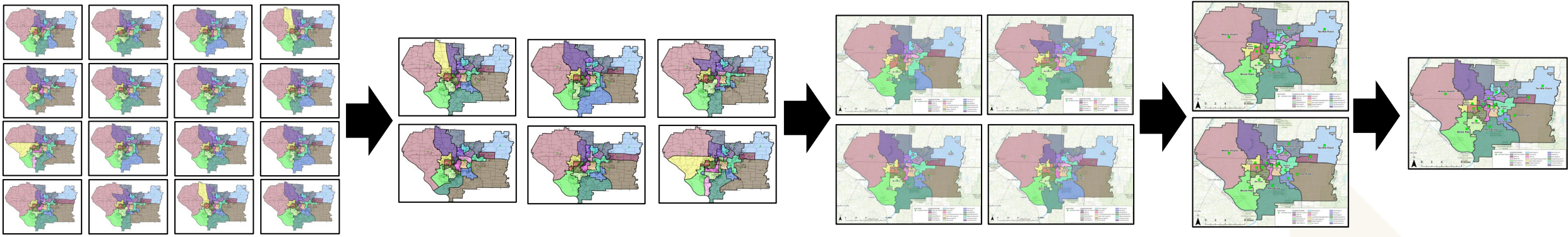
Community Engagement:
Initial Options



Recommendation & Implementation



Boundary Planning Process



- Revise boundary options based on stakeholder feedback

Planning for Rezoning

Background Data

Rezoning Committee
Superintendent's Advisory Committee for Rezoning

Boundary Work-Sessions
Staff Work Group for Rezoning

Community Engagement

Recommendation & Implementation



Boundary Planning Process

- Review rezoning recommendation
- Provide opportunity for community members to provide feedback on each area of change
- Testimony will be collected
- Responses to questions will be developed and posted to project website

Planning
Staff Work Group
for Rezoning

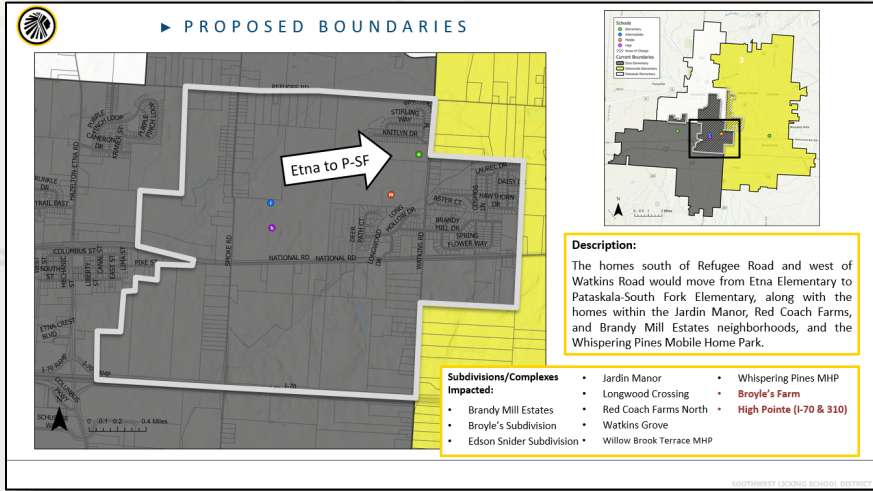
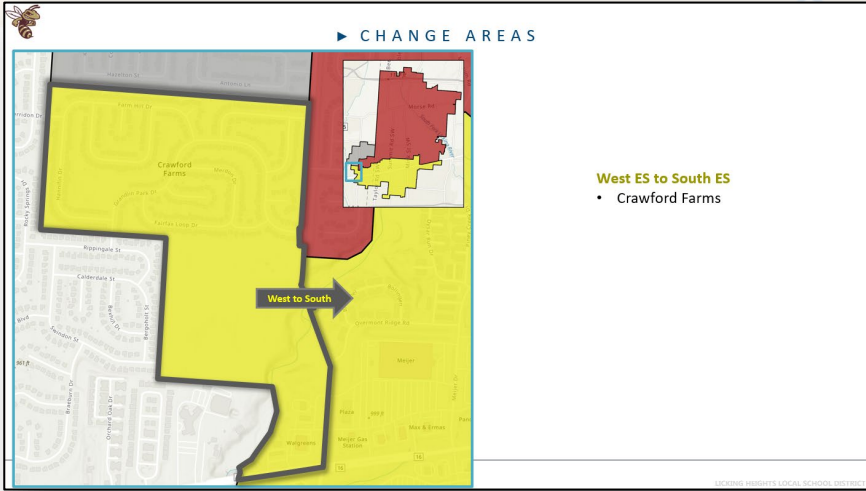
Background
Data

Rezoning
Committee
Superintendent's
Advisory Committee
for Rezoning

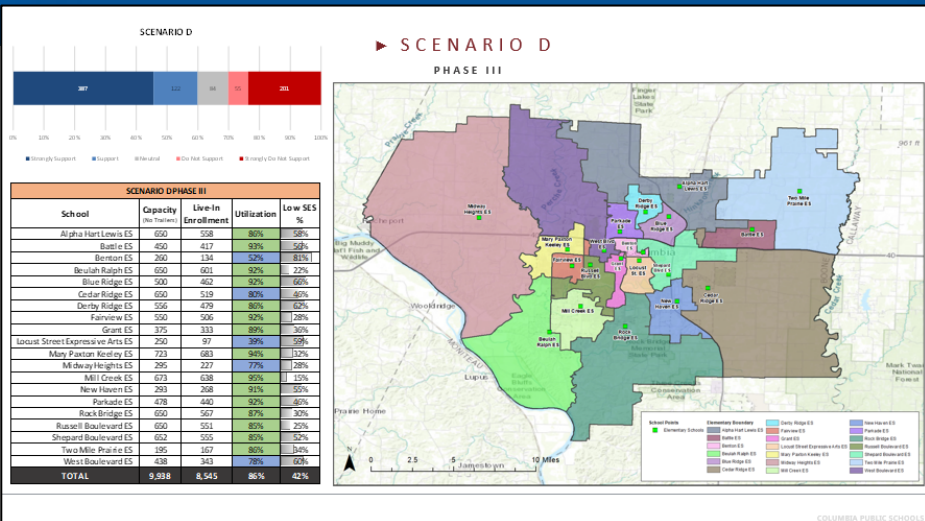
Boundary
Work-
Staff Work Group
for Rezoning

**Community
Engagement:
Public
Hearing**

Recommendation
& Implementation



Boundary Planning Process



- Recommendation to align with CCS rezoning criteria & support community feedback
- Project website & school locator application will be available throughout implementation

Recommendation & Implementation

Scenario:	Board Guidelines: Based on 22-23 School Year (not long term)								Additional Metrics			
	Minimize disruption (short term)	Keep siblings together	Balanced Enrollment	Average Balanced SES	Transportation	Keep Neighborhoods together	Feeder Splits?	Follow natural boundaries	# of schools impacted	# of students impacted	Utilization Ranges	Socioeconomic Ranges
Scenario A	2	Based on grandfathering provisions	1	2	All scenarios are feasible for transportation	Neighborhood lines are subjective	2	2	13	536	ES: 67% - 91% MS: 97% - 100% HS: 77% - 81%	ES: 45% - 79% MS: 53% - 58% HS: 43% - 46%
Scenario B	4		1	1			1	2	15 (all)	1,079	ES: 69% - 90% MS: 97% - 101% HS: 76% - 82%	ES: 41% - 80% MS: 55% - 56% HS: 43% - 46%
Scenario C	3		3	2			1	2	15 (all)	631	ES: 69% - 92% MS: 95% - 102% HS: 73% - 86%	ES: 41% - 80% MS: 54% - 58% HS: 44% - 46%

Committee Roles & Responsibilities

Committee Role

Role of the Committee

- Keep an objective view and consider the needs of all students
- Assist with the development of attendance area options and recommendations
- Inform the community about the process
- Attend all meetings

Stakeholder Involvement

CCS Community

Inform the recommendation

Guides the Process

- Provides feedback regarding priorities and boundary options

Superintendent's Advisory Committee for Rezoning

Make the recommendation

Steers the Process

- Advises consultant and staff work group on community priorities

Staff Work Group for Rezoning

Sign off on the recommendation

Promotes the Process

- Ensures options are meeting all Division goals

Board of Education

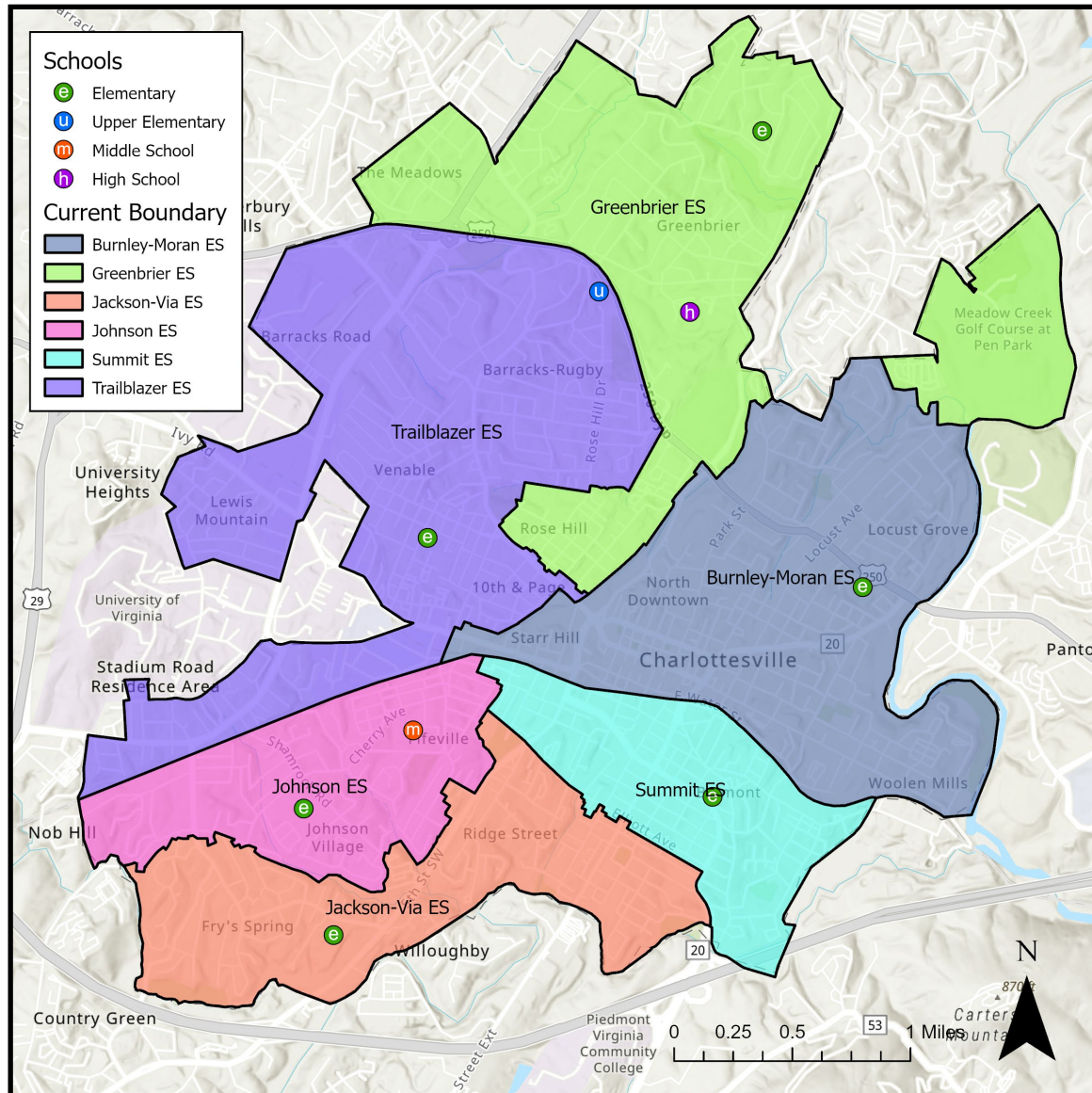
Approve the recommendation

Oversees the Process

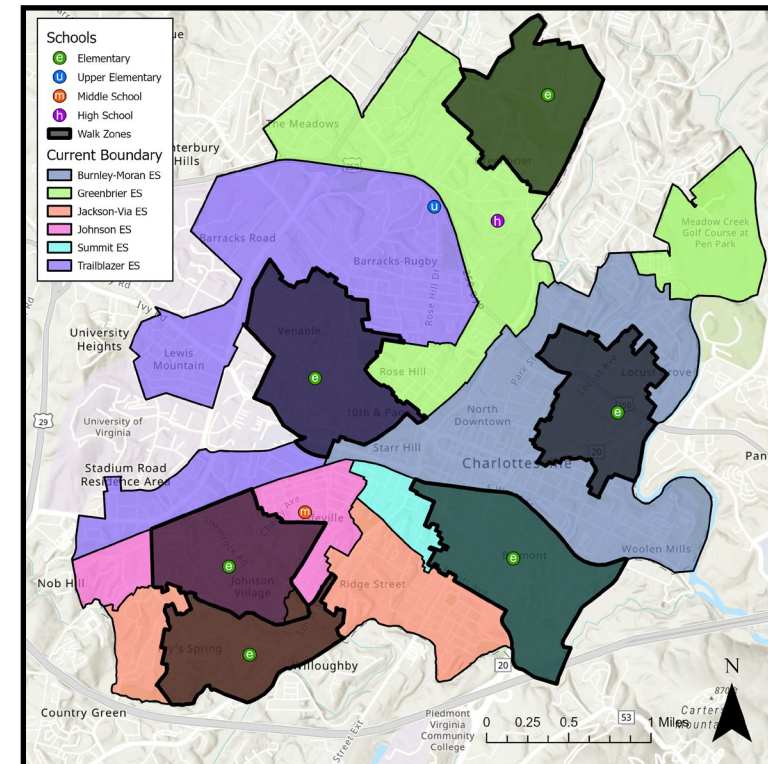
- Provides high-level feedback about boundary concepts & options

Background Data

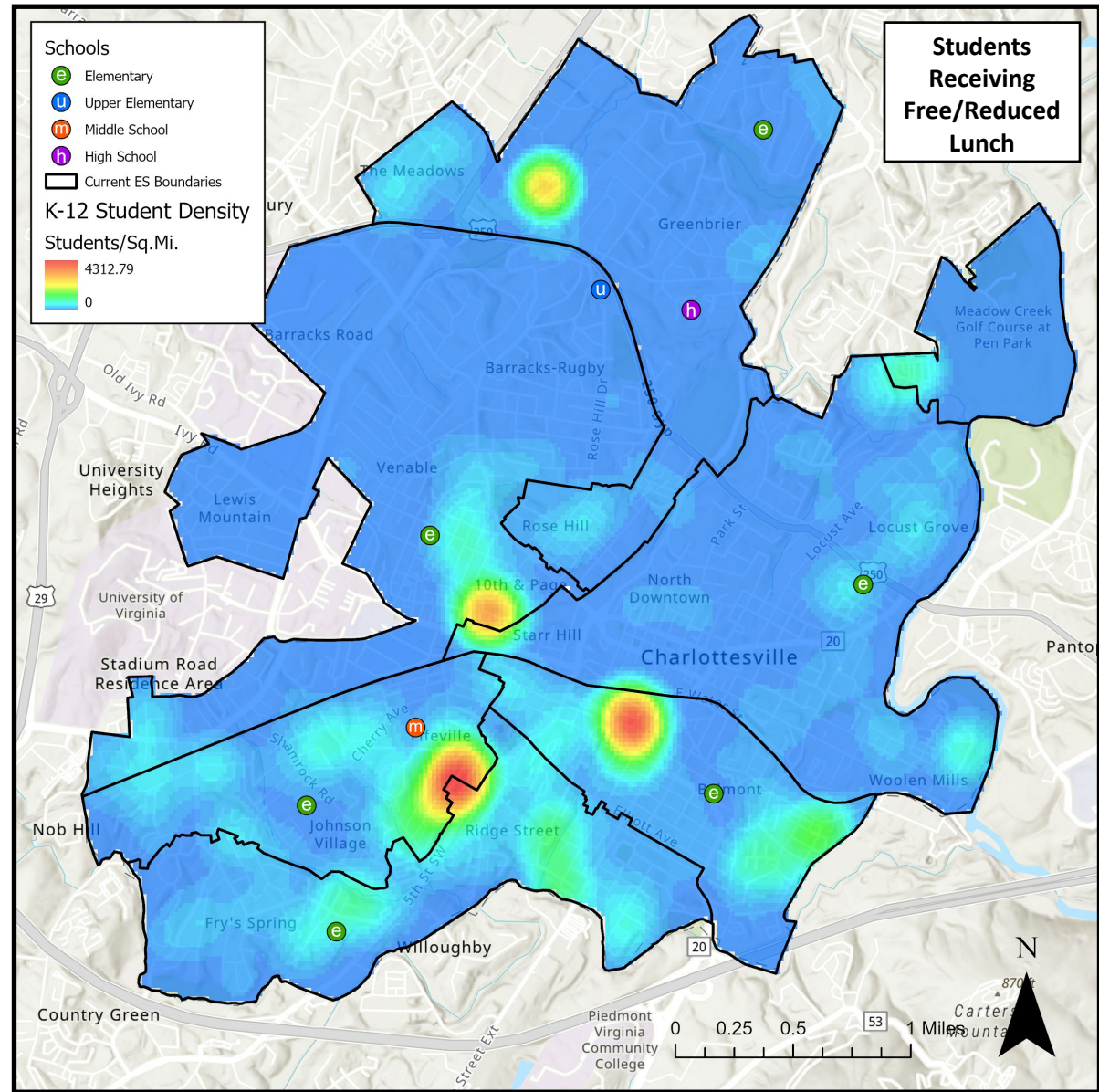
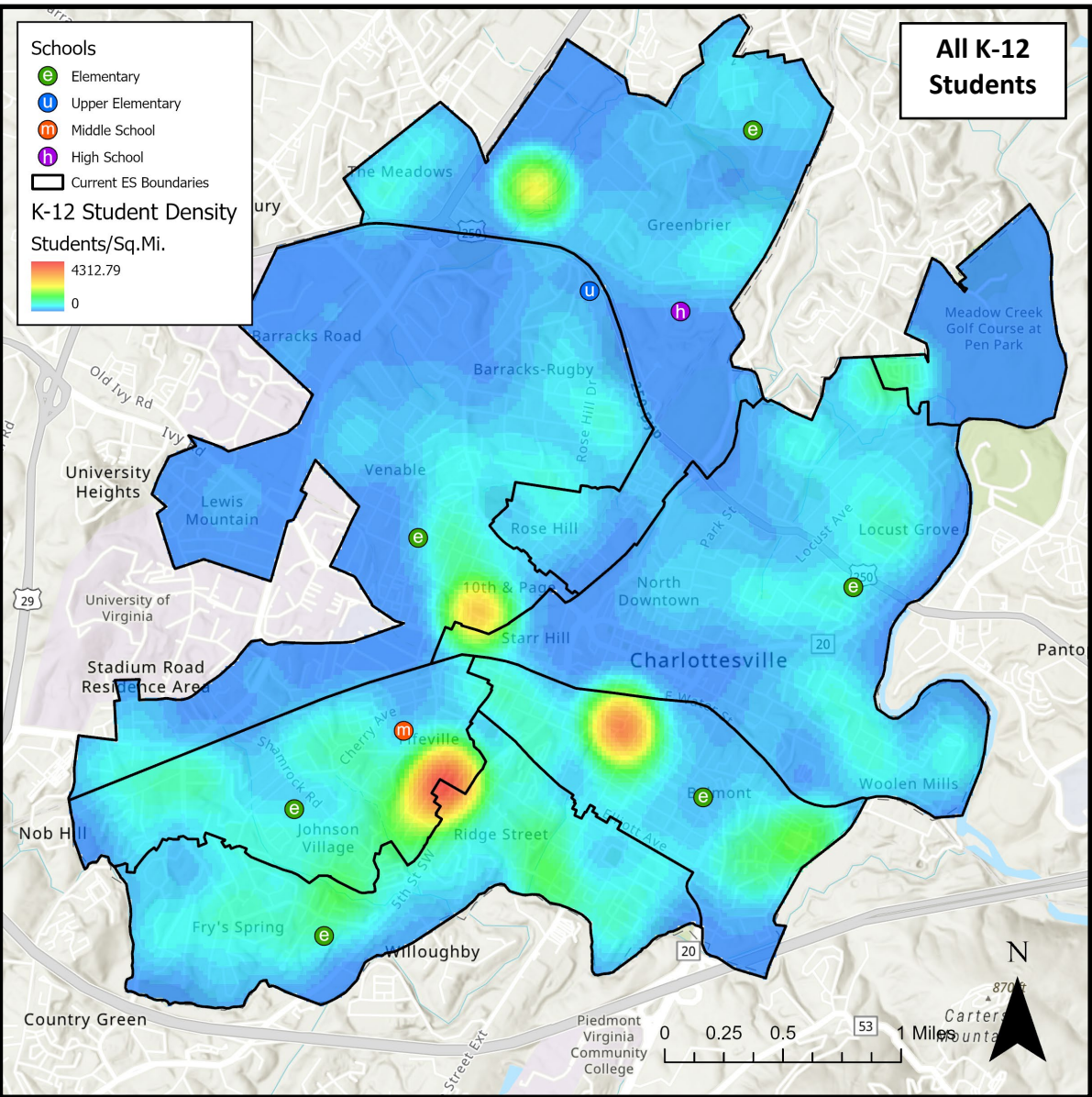
Current Boundaries & Walk Zones



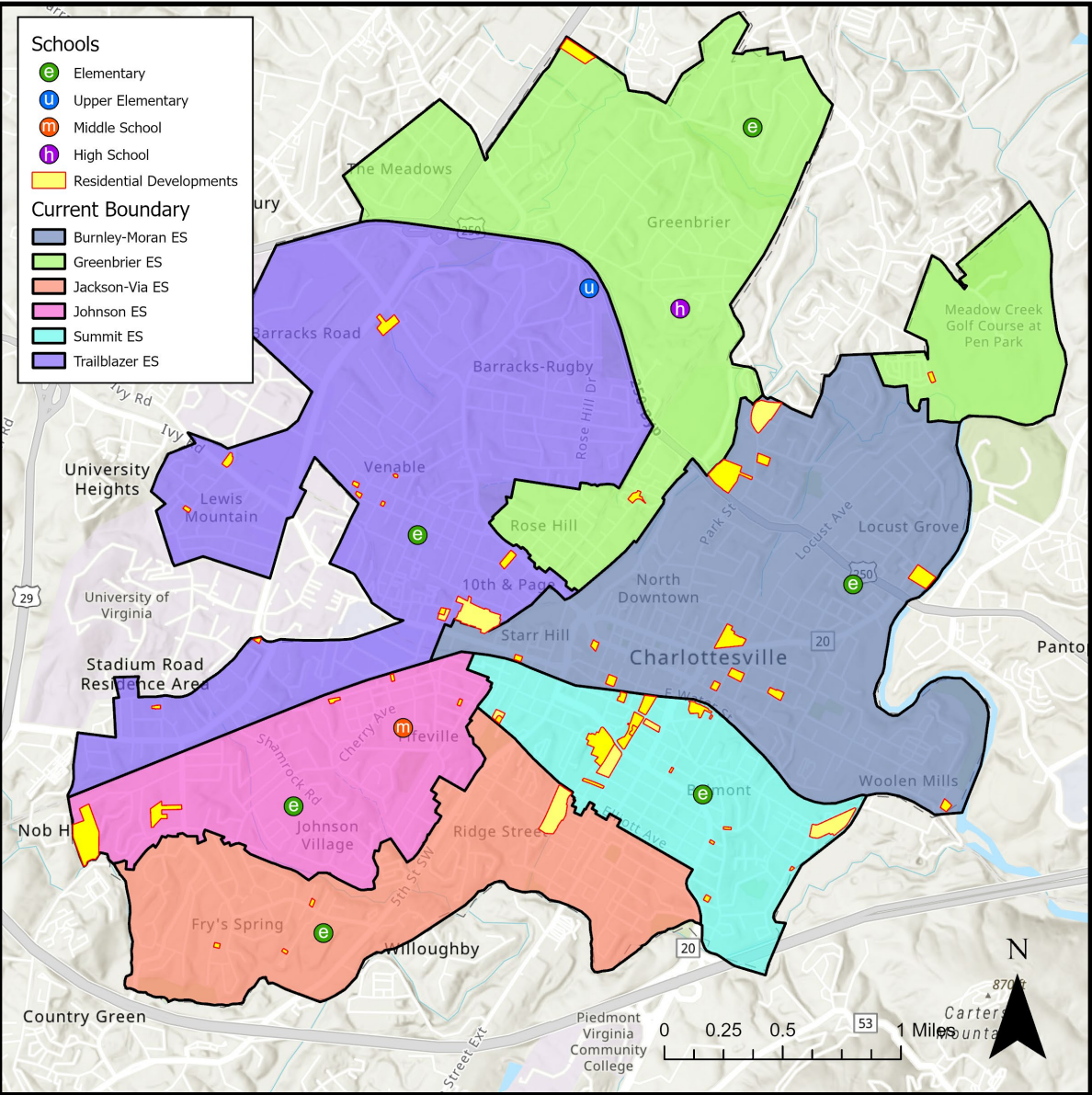
School	2025 Capacity	Live-In Enrollment	Out of District Enrollment	Utilization	Low SES %	EL %	SPED %	+ Development Utilization
Burnley-Moran ES	512	290	12	57%	34%	13%	3%	68%
Greenbrier ES	464	237	43	51%	49%	27%	3%	62%
Jackson-Via ES	470	371	3	79%	58%	22%	4%	86%
Johnson ES	426	328	19	77%	59%	27%	4%	78%
Summit ES	388	301	4	78%	76%	24%	5%	141%
Trailblazer ES	512	316	9	62%	45%	14%	5%	78%
TOTAL	2,772	1,843	90	66%	55%	22%	4%	84%



Student Density



Housing Developments



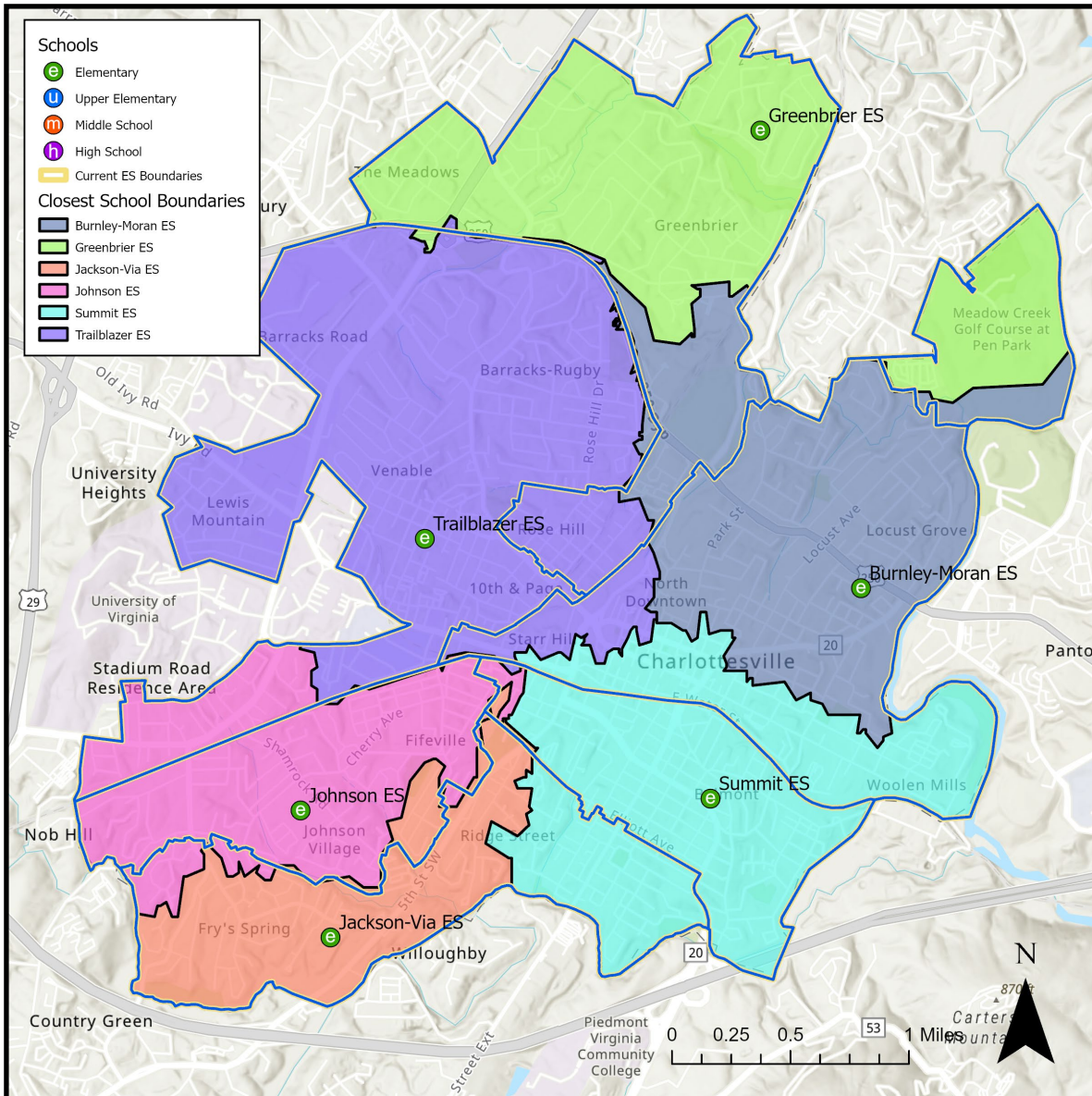
Housing Type	University Zone	Outside University Zone	CRHA
	Apartments	0.01	0.25
Single-Family Attached	0.12	0.30	0.82
Single-Family	0.12	0.22	0.56

School	2025 Capacity	Live-In Enrollment	Utilization	Low SES %	EL %	SPED %	+ Development Utilization
Burnley-Moran ES	512	290	57%	34%	13%	3%	68%
Greenbrier ES	464	237	51%	49%	27%	3%	62%
Jackson-Via ES	470	371	79%	58%	22%	4%	86%
Johnson ES	426	328	77%	59%	27%	4%	78%
Summit ES	388	301	78%	76%	24%	5%	141%
Trailblazer ES	512	316	62%	45%	14%	5%	78%
TOTAL	2,772	1,843	66%	55%	22%	4%	84%

Live/Attend Analysis

Charlottesville City Schools 2024-25 K-5 Live/Attend		School of Attendance								Transfer Out	Transfer Out %
		Burnley-Moran Elementary School	Greenbrier Elementary School	Jackson-Via Elementary School	Johnson Elementary School	Summit Elementary School	Trailblazer Elementary School	Walker Upper Elementary School	Lugo-McGinness Academy		
Boundary of Residence	Burnley-Moran ES	276	0	5	5	0	3	32	3	16	5%
	Greenbrier ES	3	209	5	0	0	5	43	3	16	6%
	Jackson-Via ES	6	5	335	7	8	1	53	6	33	8%
	Johnson ES	1	9	7	293	1	4	47	8	30	8%
	Summit ES	4	1	9	2	270	3	60	8	27	8%
	Trailblazer ES	6	1	8	4	3	295	31	7	29	8%
	Out of Division	12	43	3	19	4	9	19	0	-	-
Live & Attend		276	209	335	293	270	295	266	-	Total K-5 Students: 2,204	
Transfer In		32	59	37	37	16	25	19	35		
Transfer In %		10%	22%	10%	11%	6%	8%	7%	100%		

Closest School Analysis



School	2025 Capacity	Live-In Enrollment	Utilization
Burnley-Moran ES	512	219	43%
Greenbrier ES	464	213	46%
Jackson-Via ES	470	278	59%
Johnson ES	426	357	84%
Summit ES	388	472	122%
Trailblazer ES	512	304	59%
TOTAL	2,772	1,843	66%

THIS IS NOT A VIABLE OPTION FOR CCS

Options Review & Creation