



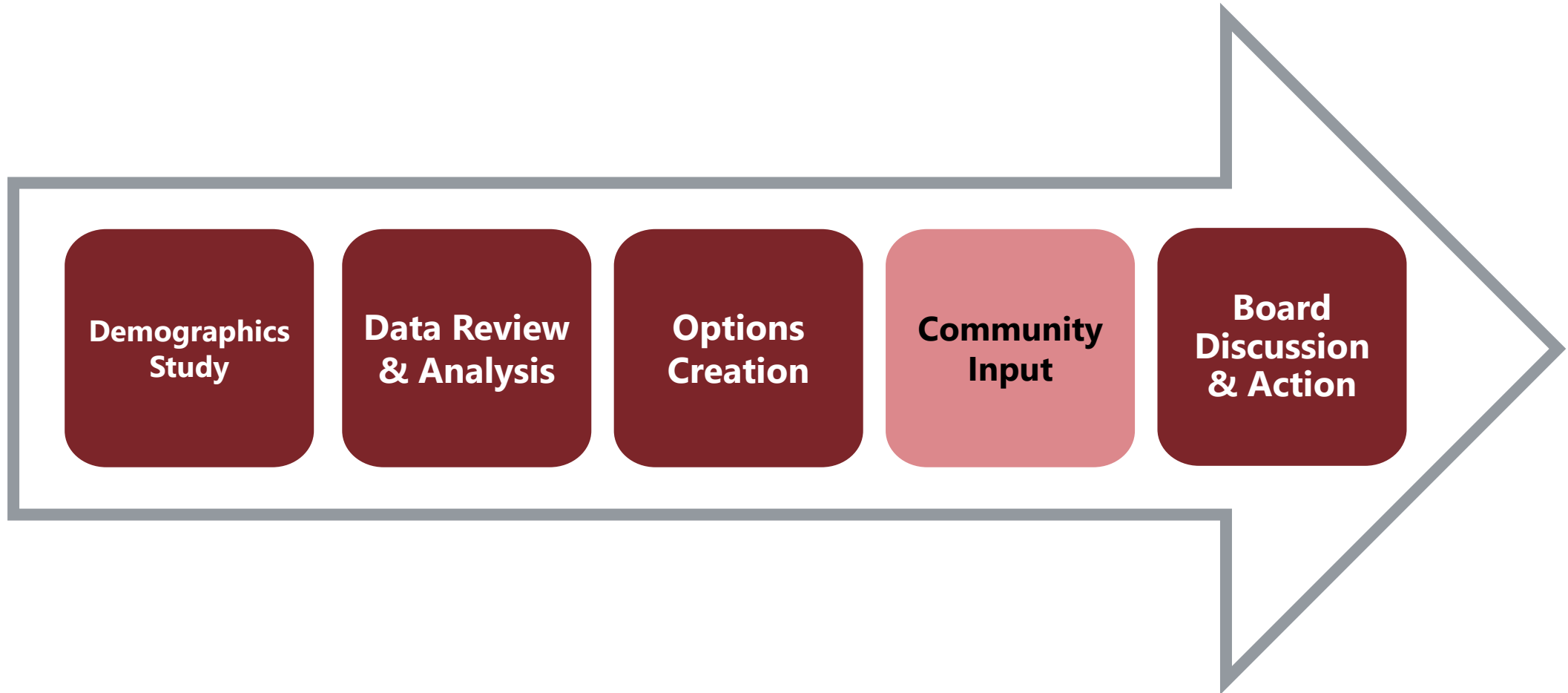
COOPERATIVE STRATEGIES

COMPLETE FINANCIAL & DEMOGRAPHIC PLANNING FOR EDUCATION

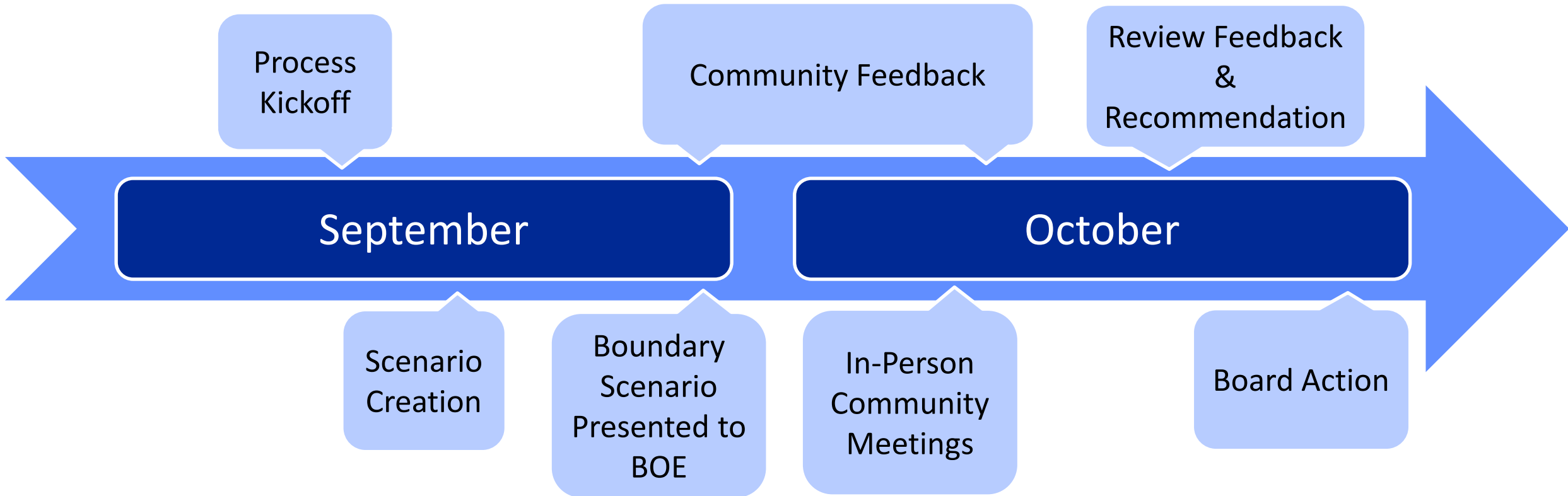
OXNARD UNION HIGH SCHOOL DISTRICT
PRELIMINARY BOUNDARY SCENARIO UPDATE

October 12, 2022

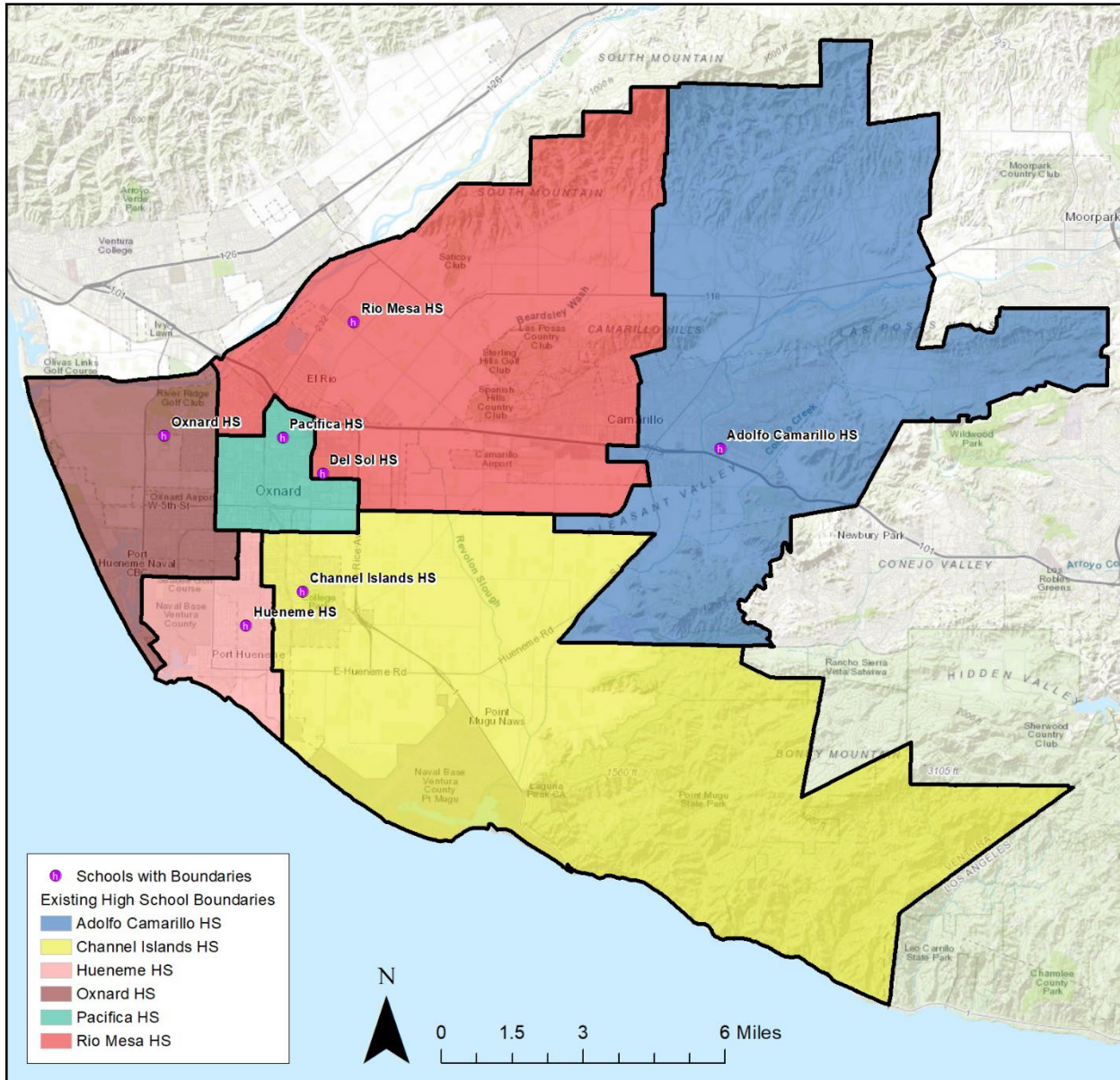
▶ BOUNDARY PLANNING
PROCESS



▶ BOUNDARY PLANNING
TIMELINE



► EXISTING BOUNDARIES



Existing Boundaries				
Boundary High Schools	Capacity	Live-In Enroll.	Utilization	Free/Red. Lunch %
Adolfo Camarillo HS	2,200	1,587	72%	24%
Channel Islands HS	2,200	2,709	123%	80%
Del Sol HS	2,200	0	0%	N/A
Hueneme HS	2,200	2,799	127%	80%
Oxnard HS	2,400	2,378	99%	68%
Pacifica HS	2,200	3,348	152%	80%
Rio Mesa HS	2,200	2,731	124%	60%
TOTAL	15,600	15,552	100%	69%

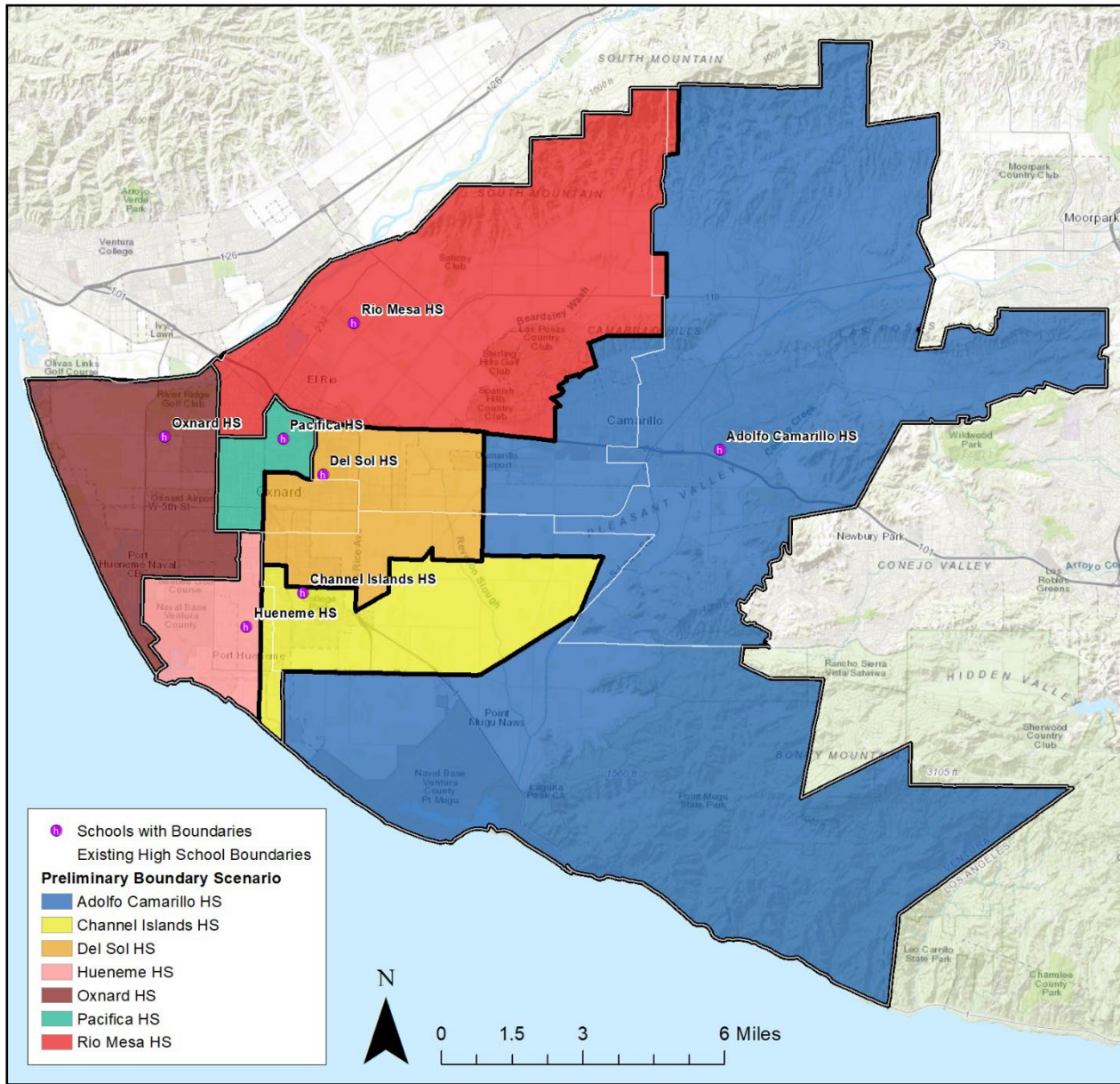
Existing Boundaries	Projected Utilizations				
	SY23-24	SY25-26	SY27-28	SY29-30	SY31-32
Adolfo Camarillo HS	63%	62%	59%	55%	51%
Channel Islands HS	117%	111%	106%	99%	92%
Del Sol HS	0%	0%	0%	0%	0%
Hueneme HS	123%	116%	110%	103%	96%
Oxnard HS	96%	92%	88%	82%	76%
Pacifica HS	150%	143%	136%	127%	118%
Rio Mesa HS	115%	110%	105%	98%	91%
TOTAL	95%	92%	86%	81%	75%

Projected utilizations represent the utilizations at each school, should no boundary changes be made.

A photograph of a classroom. A female teacher in a white shirt stands at the front near a chalkboard. Several students in the foreground have their hands raised. The scene is overlaid with a semi-transparent white box containing the text 'PRELIMINARY BOUNDARY SCENARIO'.

PRELIMINARY BOUNDARY SCENARIO

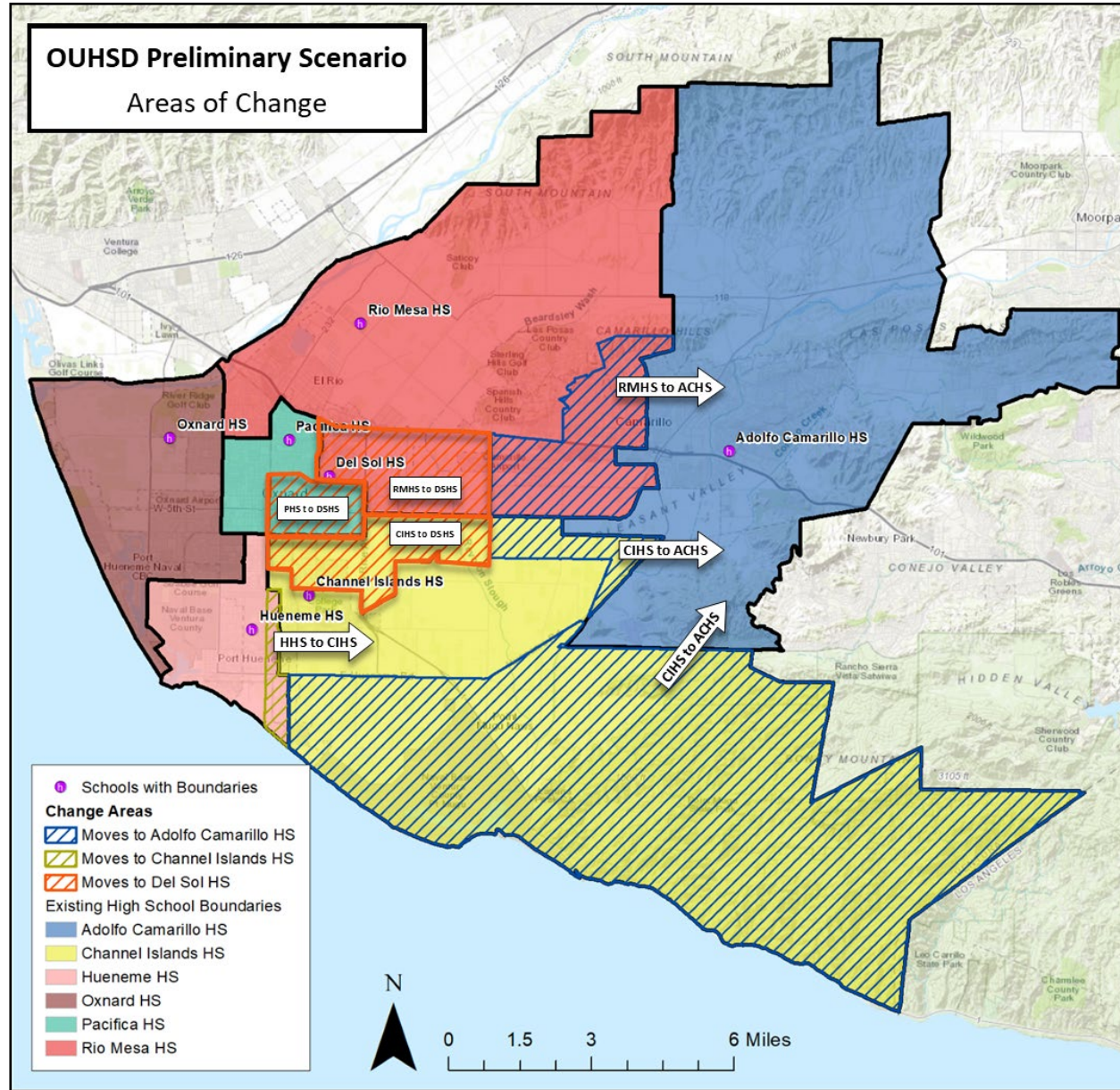
► PRELIMINARY BOUNDARY SCENARIO



Preliminary Scenario				
Boundary High Schools	Capacity	Live-In Enroll.	Utilization	Free/Red. Lunch %
Adolfo Camarillo HS	2,200	2,101	96%	27%
Channel Islands HS	2,200	2,247	102%	79%
Del Sol HS	2,200	2,387	109%	83%
Hueneme HS	2,200	2,382	108%	80%
Oxnard HS	2,400	2,378	99%	68%
Pacifica HS	2,200	2,091	95%	75%
Rio Mesa HS	2,200	1,966	89%	67%
TOTAL	15,600	15,552	100%	69%

Preliminary Scenario	Projected Utilizations				
	SY23-24	SY25-26	SY27-28	SY29-30	SY31-32
Adolfo Camarillo HS	82%	80%	76%	71%	66%
Channel Islands HS	97%	93%	88%	83%	77%
Del Sol HS	106%	100%	95%	89%	83%
Hueneme HS	105%	99%	94%	88%	82%
Oxnard HS	96%	92%	88%	82%	76%
Pacifica HS	94%	90%	85%	80%	74%
Rio Mesa HS	85%	81%	77%	72%	67%
TOTAL	95%	92%	86%	81%	75%

► PRELIMINARY BOUNDARY SCENARIO



A photograph of a classroom scene. A female teacher in a white shirt stands at the front, facing a chalkboard. Several students in the foreground have their hands raised, indicating an interactive lesson. The text "FEEDBACK RECEIVED" is overlaid in the center of the image.

FEEDBACK RECEIVED

► FEEDBACK SUMMARY

Community Open Houses Feedback Summary:

- Residents suggested that the ACHS boundaries should include more of Camarillo (i.e. Spanish Hills, Las Posas, Sterling Hills)
- Some suggestions included:
 - Include zip codes 93010 and 93012
 - Follow feeder district boundaries
 - Follow city of Camarillo boundaries
- Appreciate the lack of impact to current students
- A resident in the Channel Islands boundary wanted to ensure their future high school student would be able to earn college credits at their school.

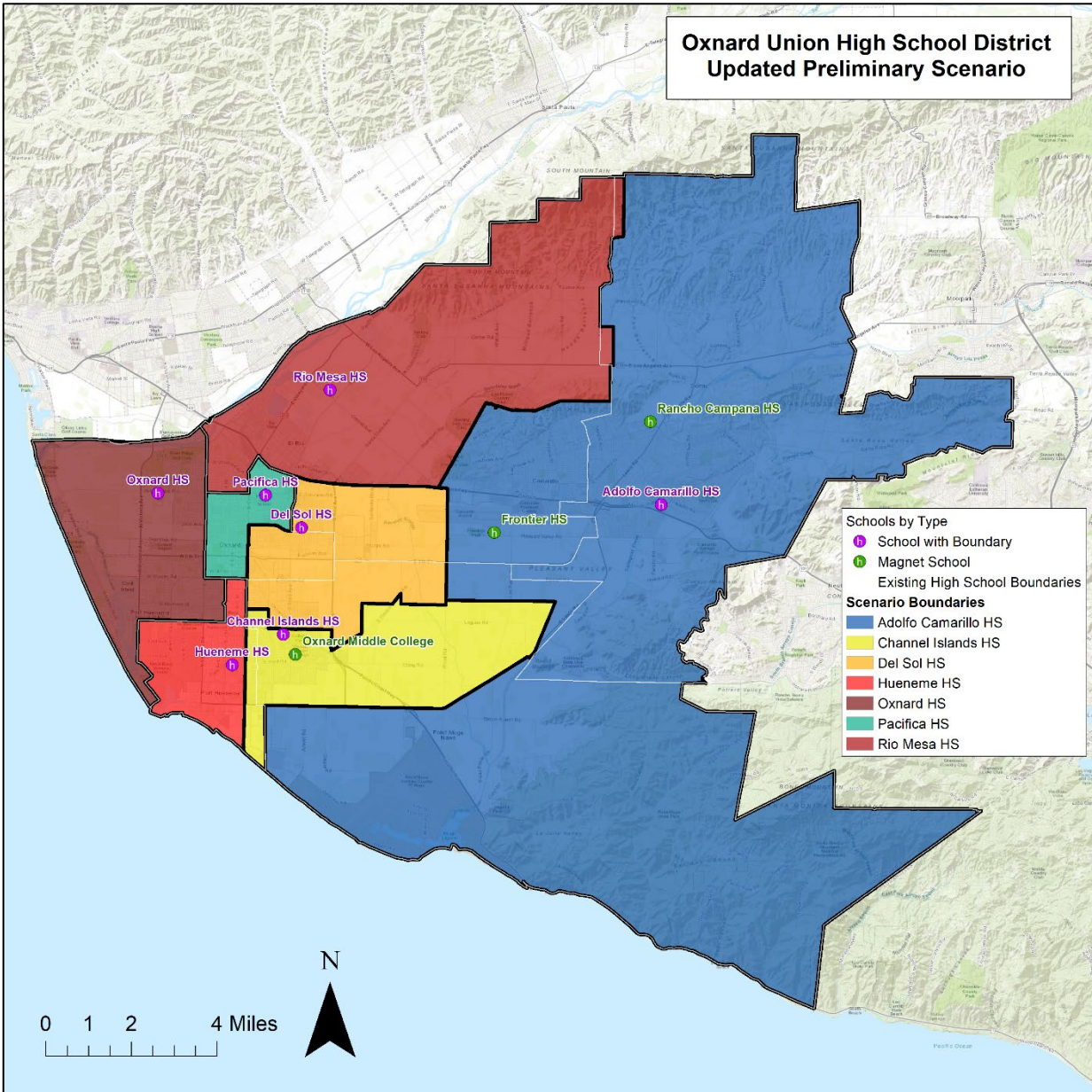
Community Survey Feedback Summary:

- Appreciate the ACHS changes that include more of Camarillo into the ACHS boundary
 - Would like more of Camarillo included, many mentioned feeder districts as a boundary line
 - Concerns with influx of students at ACHS & associated traffic
- Proximity is a concern
 - Dislike reassignment of areas in close proximity to CIHS to DSHS, and from HHS to CIHS

A photograph of a classroom. A female teacher in a white shirt stands at the front near a chalkboard. Several students in the foreground have their hands raised. The text 'UPDATES TO SCENARIO' is overlaid in the center.

UPDATES TO SCENARIO

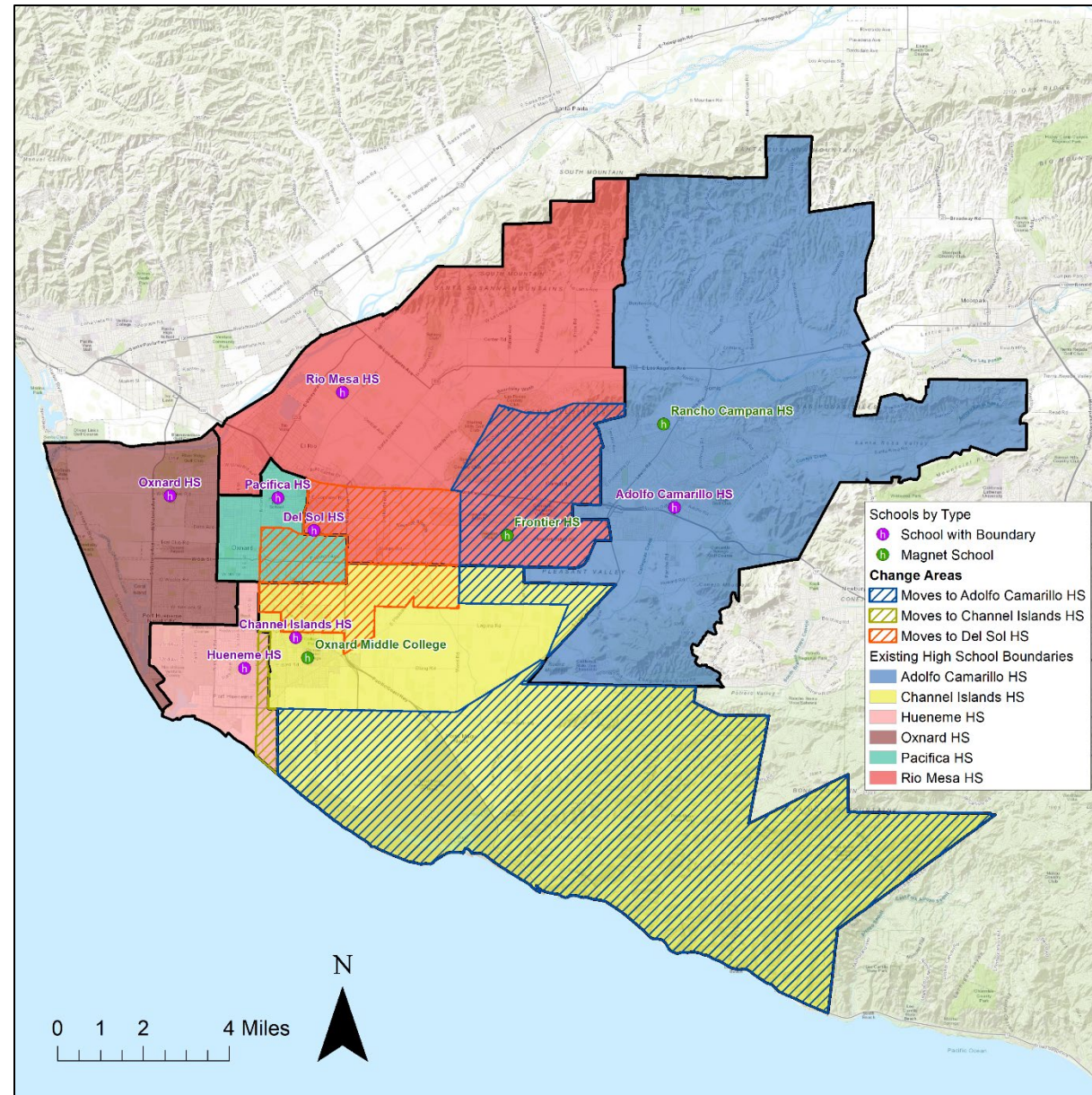
▶ UPDATED BOUNDARY SCENARIO



OPTION				
Boundary High Schools	Capacity	Live-In Enroll.	Utilization	Free/Red. Lunch %
Adolfo Camarillo HS	2,200	2,223	101%	27%
Channel Islands HS	2,200	2,247	102%	79%
Del Sol HS	2,200	2,387	109%	83%
Hueneme HS	2,200	2,382	108%	80%
Oxnard HS	2,400	2,378	99%	68%
Pacifica HS	2,200	2,091	95%	75%
Rio Mesa HS	2,200	1,844	84%	69%
TOTAL	15,600	15,552	100%	69%

OPTION	Projected Utilizations				
	SY23-24	SY25-26	SY27-28	SY29-30	SY31-32
Adolfo Camarillo HS	86%	84%	80%	75%	69%
Channel Islands HS	97%	93%	88%	83%	77%
Del Sol HS	106%	100%	95%	89%	83%
Hueneme HS	105%	99%	94%	88%	82%
Oxnard HS	96%	92%	88%	82%	76%
Pacifica HS	94%	90%	85%	80%	74%
Rio Mesa HS	80%	77%	73%	68%	63%
TOTAL	95%	92%	86%	81%	75%

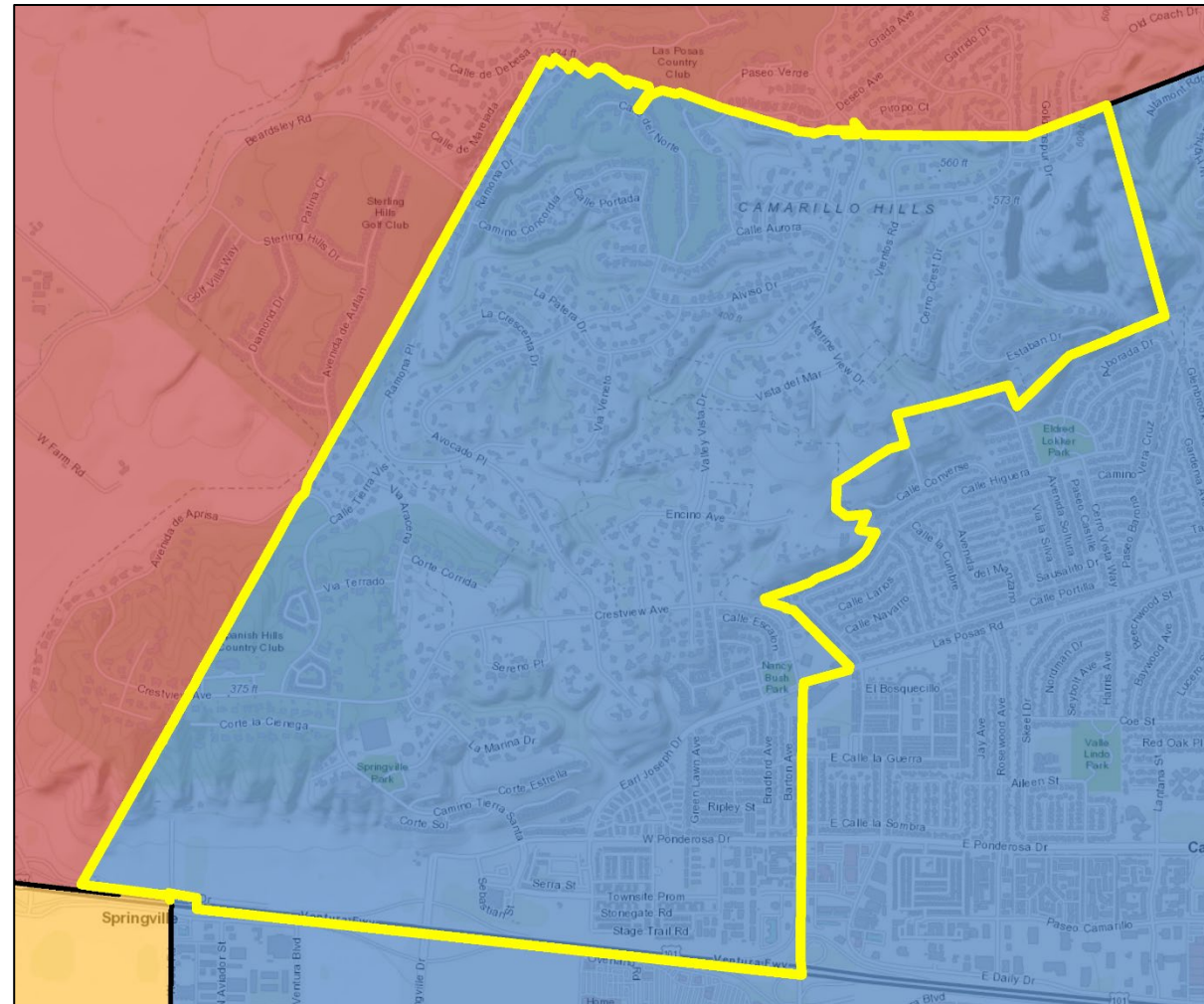
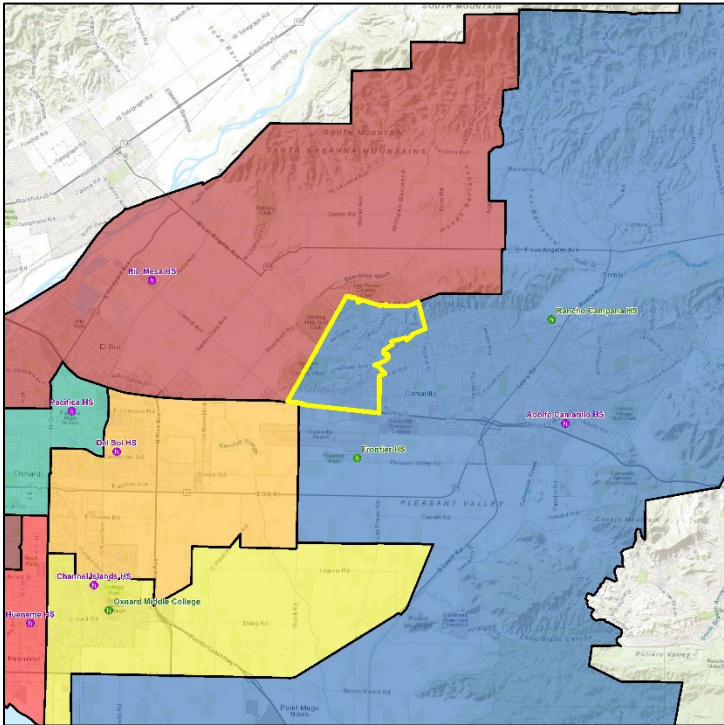
▶ UPDATED BOUNDARY SCENARIO



▶ UPDATED BOUNDARY SCENARIO

Western Camarillo: **Changed**

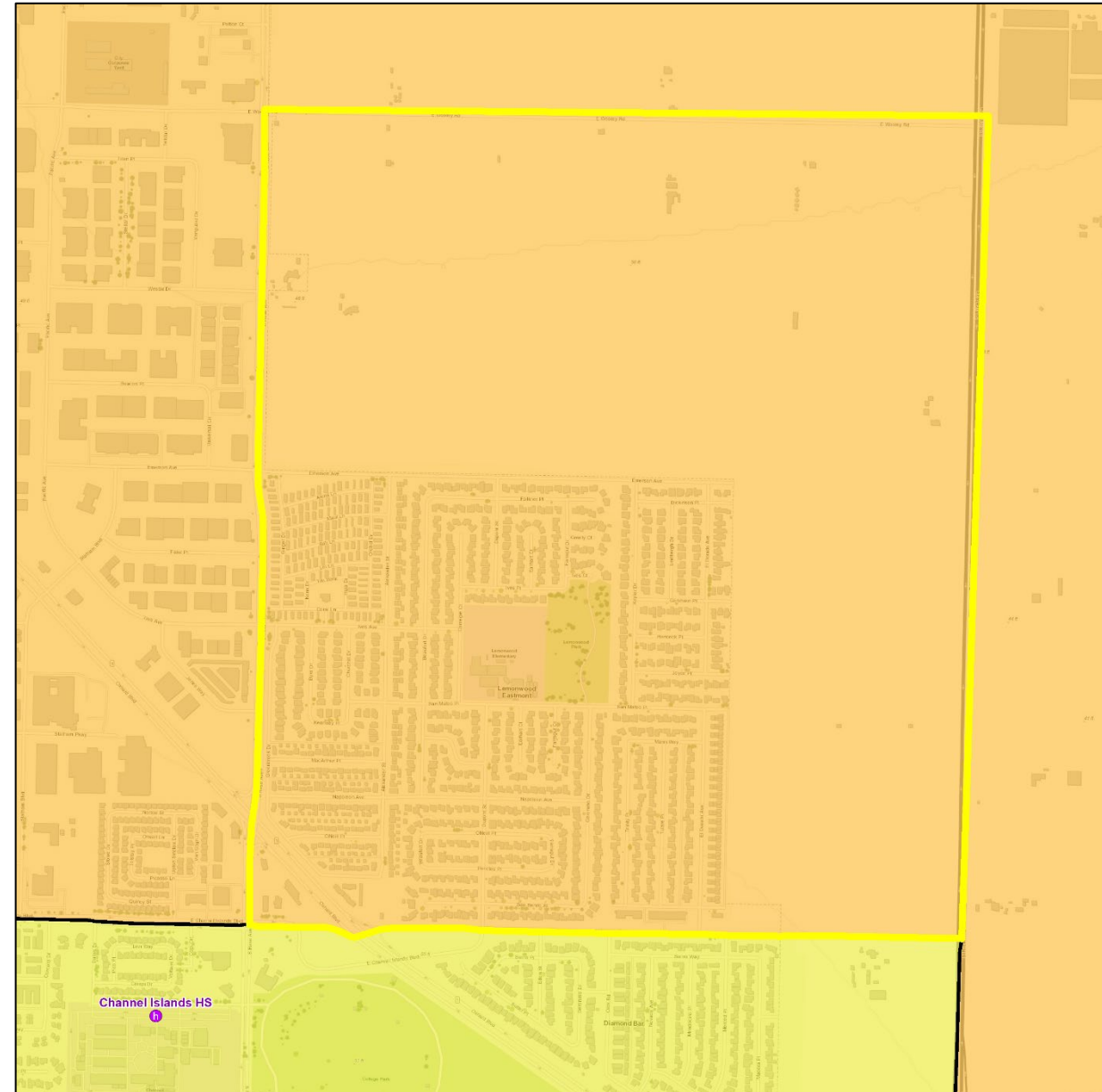
- Feeder pattern: new line follows feeder districts
 - Pleasant Valley feeds 100% to ACHS
 - Mesa Union feeds 100% to RMHS
- Many students in this area already attend Camarillo HS
- Leaves additional room for growth at Rio Mesa HS
- Includes southern sections of Las Posas, Sterling Hills, Spanish Hills



► UPDATED BOUNDARY SCENARIO

Lemonwood: **Unchanged from preliminary scenario**

- CIHS needs utilization relief (currently 123%)
- CIHS would remain overcrowded or in order to provide utilization relief it would require changes to several other boundaries
- Boundary scenario allows for better feeder from Oxnard Elementary District





COOPERATIVE STRATEGIES

COMPLETE FINANCIAL & DEMOGRAPHIC PLANNING FOR EDUCATION

THANK YOU
WE APPRECIATE YOUR TIME