



FACILITY MASTER PLAN:

COMMUNITY DIALOGUE #1





AGENDA



1. Process & Timeline
2. Purpose of Today's Meeting – high level feedback on big picture concepts that will help define an envelope to develop options within
3. Background Information
4. Overview of Concepts
5. Individual Questionnaire (15-20 minutes) – QR Codes on the tables – paper available upon request.
6. Small Group Questionnaire (45-60 minutes)
7. Reporting out: Paper Flipchart Gallery Walk



PROCESS OVERVIEW





TIMELINE



Overall Project Timeline:

Task / Activity	2021												2022								
	April	May	June	July	August	September	October	November	December	January	February	March	April	May	June	July	August	September	October	November	
Kickoff Meeting	█																				
Assessment Validation																					
Background Data Collection	█	█	█	█	█	█															
Futures Conference						█															
Steering Committee							█	█	█	█	█										
Educational Framework																					
Options Development									█												
Community Feedback on Options										█											
Recommendation Development											█										
Board Meetings										█		█									
Controlling Board																					
November Ballot Deadline																					

Community Meeting Schedule:

- ✓ **Educational Futures Conference:** September 22, 6:00 pm – 8:00 pm @ NHS Cafeteria
- **Community Dialogue #1/ Educational Framework:** November 10 , 6:00 pm – 8:00 pm @ NHS Cafeteria
- **Community Dialogue #2/ Facility Options:** January 12 , 6:00 pm – 8:00 pm @ NHS Cafeteria
- **Board Discussion and Action:** Dates TBD, March 2022



PROJECT WEBSITE



<https://coopstratprojects.com/nordoniahillscitysd/>

- Agendas
- Presentations
- Questionnaires
- Background Information
- Schedule

The screenshot shows the website layout. At the top left is the Nordia Hills School District logo. At the top right is the Cooperative Strategies logo with the tagline 'ASSESS • PLAN • FUND • BUILD'. Below the logos is a navigation menu with 'HOME' at the top, followed by three red buttons labeled 'Home', 'Process', and 'Resources'. The main content area has a 'Home' heading and a welcome message: 'Welcome to the Nordonia Hills City School District's Master Plan Website. This space will serve as the resource for all information related to the process. This site will be updated regularly throughout the process. Please, check back often for new information.' Below this is a section titled 'Facility Master Plan Overview' with a large image of diverse children smiling.

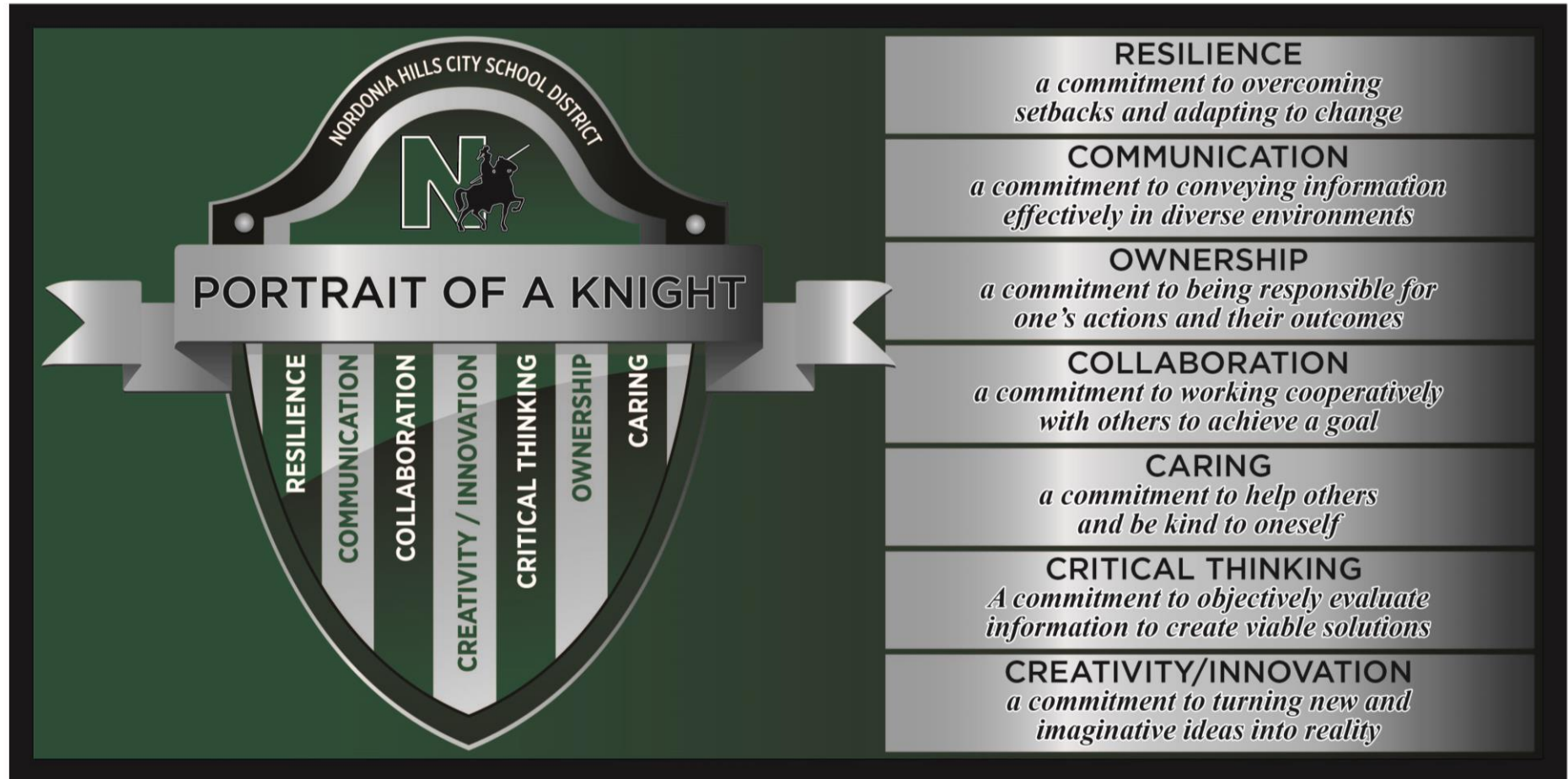




PORTRAIT OF A KNIGHT



- Developed through a community process
- Adopted over a year ago
- Board approved



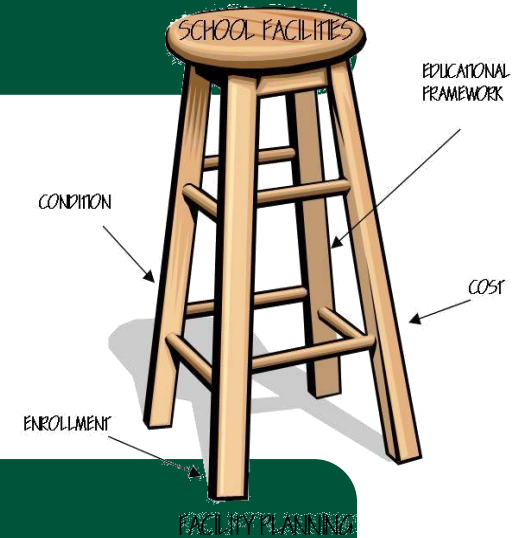


FACILITIES MASTER PLAN



Facility Master Plan aligns facilities to the Portrait of a Knight

- Educational Framework
- Condition & Adequacy Assessments
- Enrollment vs. Capacity
- Cost to correct deficiencies & provide equitable facilities



Validating Needs – OFCC Assessment Data

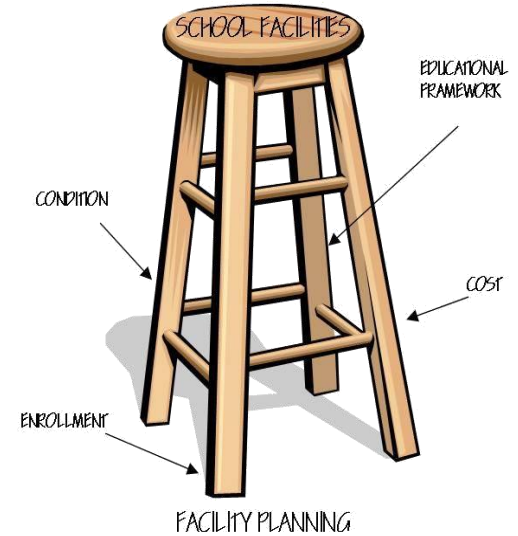


WHAT DOES A FACILITY MASTER PLAN DO?



Examples of Facility Master Plan Actions:

- Construct new facilities or add on to existing facilities
- Renovate / Modernize existing facilities
- Repurpose or consolidate facilities
- Program or grade configuration change





FUTURES CONFERENCE SUMMARY



- Wednesday, September 22, 2021
- Approximately 75 attendees
- Online Questionnaire for a week following in person meeting – with approximately 20 respondents
- 4 Questions:
 1. *What qualities should the students of 2050 have?*
 2. *What are the careers of 2050?*
 3. *What does the school of 2050 look like?*
 4. *How do the facilities support or hinder “Portrait of a Knight”?*



FUTURES CONFERENCE SUMMARY



1) Tech Savvy Problem Solvers
Quick Thinkers
Resilient
Logical
Career Ready

Social Skills
Flexible
Independent
Motivated

2) Space Health Care Environment Infrastructure

Trades
Technology
Finance
Entrepreneurship

3) Open Space Screens Environmentally friendly Hand free Collaborate areas

Safe Built Proof

4) No collaborative areas - communication
No bright colors - creativity

NEW = Bright Modern Open spaces

Gold

1. - FLEXIBLE W/ TECHNOLOGY
- HARD WORKING
- BEING PREPARED/LIFE SKILLS

2. - ARTIFICIAL INTELLIGENCE
- TRADES (BUILDING/MECHANICAL)
- HEALTH CARE
- GREEN ENERGY/ENVIRONMENTAL

3. - COLLABORATIVE SPACES
- LEARNING SPACE
- ENERGY EFFICIENCY/INDEPENDENCE
- FRESH AIR
- WELL LIT/NATURAL LIGHT

4. - THE SCHOOL ENVIRONMENT FOSTERS THE OUTCOME OF THE STUDENT
- MAKE THE STUDENTS EXCITED ABOUT COMING TO SCHOOL
- BEAL PROUD OF WHERE YOU CAME FROM

1. Qualities of Student in 2050

- innovative
- self-starters
- motivated
- global
- confident
- inclusive
- empowered
- kind
- flexible

2. Careers of 2050

- IT
- Robotics
- Renewable energy/eco
- Medical/health
- trades

3. Schools of 2050

- remote or hybrid option
- teaching life skills
- choose career path earlier on
- work/life balance
- teach skills that can be used in work

4. Facilities' support "Portrait of a Knight"

4. Buildings

- De-centralization creates opportunities for leadership + resilience, but may negatively impact standardization and student collaboration/communication
- Space is designed very traditionally. Opening up spaces build positively impact collaboration + creativity
- lack of comfortable temps can negatively impact the learning environment
- kids need to carry less materials

1. RESPONSIBLE
RESPECTFUL
MOTIVATED
ADAPTABILITY
CONNECTIVITY
IN-PERSON COMMUNICATION
COMMUNITY MINDED

2. TECHNOLOGY
ROBOTICS A.I.
MEDICAL FIELD
EDUCATORS
FIRST RESPONDERS
PUBLIC SERVANTS

3. OPEN SPACES
STATE OF THE ART TECHNOLOGY
VERSATILITY OF SPACE WE HAVE
"LESS INDUSTRIAL"

4. PRIDE & OWNERSHIP IN THE SCHOOL
BEING A KNIGHT IS COOL!
IT'S TIME TO PLAN FOR THE FUTURE
NORWICH BAND IS THE BEST!

① Qualities Character

- Resilient (work ethic)
- Learns thru experience
- Integrity

② Careers

- Tech (crypto, programming)
- Trades (make equitable)

③ Schools like

- Hands on/trades
- Open + Closed Spaces (different learning space)
- Physical Wellness
- How to Adult (finance)

④ Facilities support or hinder

- \$ in facilities
- Campus/comb learning
- K-12 same bldg
- Older kids teach/mentor to younger

OPEN = LOUD

2050

1. Resilient, adaptable, critical thinking, independent, able to collaborate, empathetic + compassionate, hard-working, self-control, big picture vision

2. Careers: Technology, medical fields - homeworking as a team, no physical workplace service industries, change in careers a few times, more researching careers

3. Adaptable, inviting, flexible areas, wheels, energy efficient, outdoor areas room to grow - but to go w/enrollment technology-adaptive, community gathering place

4. Safety - conditions - physical age hinders learning - lack of innovation want our students proud of their school

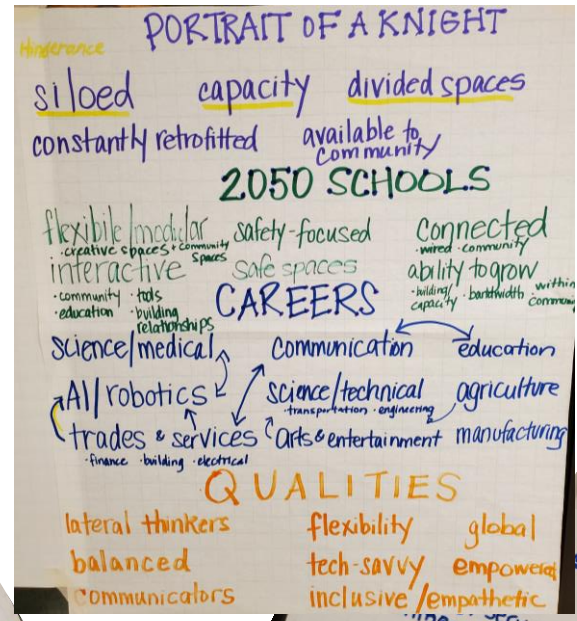




FUTURES CONFERENCE SUMMARY



1. Empathy Curiosity
Teamwork / Collaboration
Ambitious
2. Medical, Ecology, Communication
Engineering, Education, Trades
Technology
3. Schools support various
learning styles/modes.
Blended learning,
Social/Emotion



- Qualities**
- Independence
 - Critical Thinking
 - Social Interaction
 - Self-Discipline
 - Respect
 - Adaptability
 - Adversity - Overcoming
 - Open-Minded
 - Integrity
- Careers**
- IT
 - Blue Collar Trades
 - Welding
 - Construction
 - Coding
 - Software Engineering
 - Cryptocurrency
 - Mechanic
 - Healthcare industry
 - Manufacturing
- 2050 School**
- Modular
 - Efficient
 - Hybrid
 - Security
 - Care
 - IT
- Portrait**
- More Space Needed
 - Less student-teacher ratio
 - Security
 - Spaces/Places for Social Interaction

① Collaboration, Global Impact, Multi-faceted, Multitasking, Service

② Tech, Mental health, medical, Social Interaction, government, Economics

③ Multiple interactions, open spaces, adaptable, shared goals

④ Provides opportunities to learn, interdisciplinary, because of the big cost

School of 2050

Diverse & Interchangeable
Natural Light / Air Flow
Safety
Community
Accessibility

Qualities of 2050 Students:

- Mobility
- Independence
- Decision Makers
- Understanding
- Leaders
- Accountability
- Calculated risk-takers

CAREERS OF 2050

- Technology / To meet
- Health / All kinds of services
- Creative / Artistic / Business
- Professional / Career
- Entrepreneur

How do the facilities support these?
 - More open spaces
 - More natural light
 - More community spaces
 - More flexible spaces
 - More security

- ① Adoptable, creative, multi-taskers, critical thinkers, tech savvy, resilient, global-minded
- ② Tech, AI, Trades, medical, engineers, humanitarians
- ③ Environmentally-minded, less structure, solar, natural open spaces, solar, natural light, less industrial, more accommodative
- ④ Facilities - conditions, safety, not enough parking, lacks flexibility, wasted space, closed off, no A/C

3. Less Formal, Career-centered, Flexible Schedules
 4. Hinder: Conditions of bldg hinder critical thinking - distracting
Some do not have common areas - hinder creativity
- Support:** Conditions fosters resiliency



FUTURES CONFERENCE RESULTS

*What
qualities
should the
students of
2050 have?*





FUTURES CONFERENCE RESULTS

*What does the
school of 2050
look like?*





FUTURES CONFERENCE RESULTS

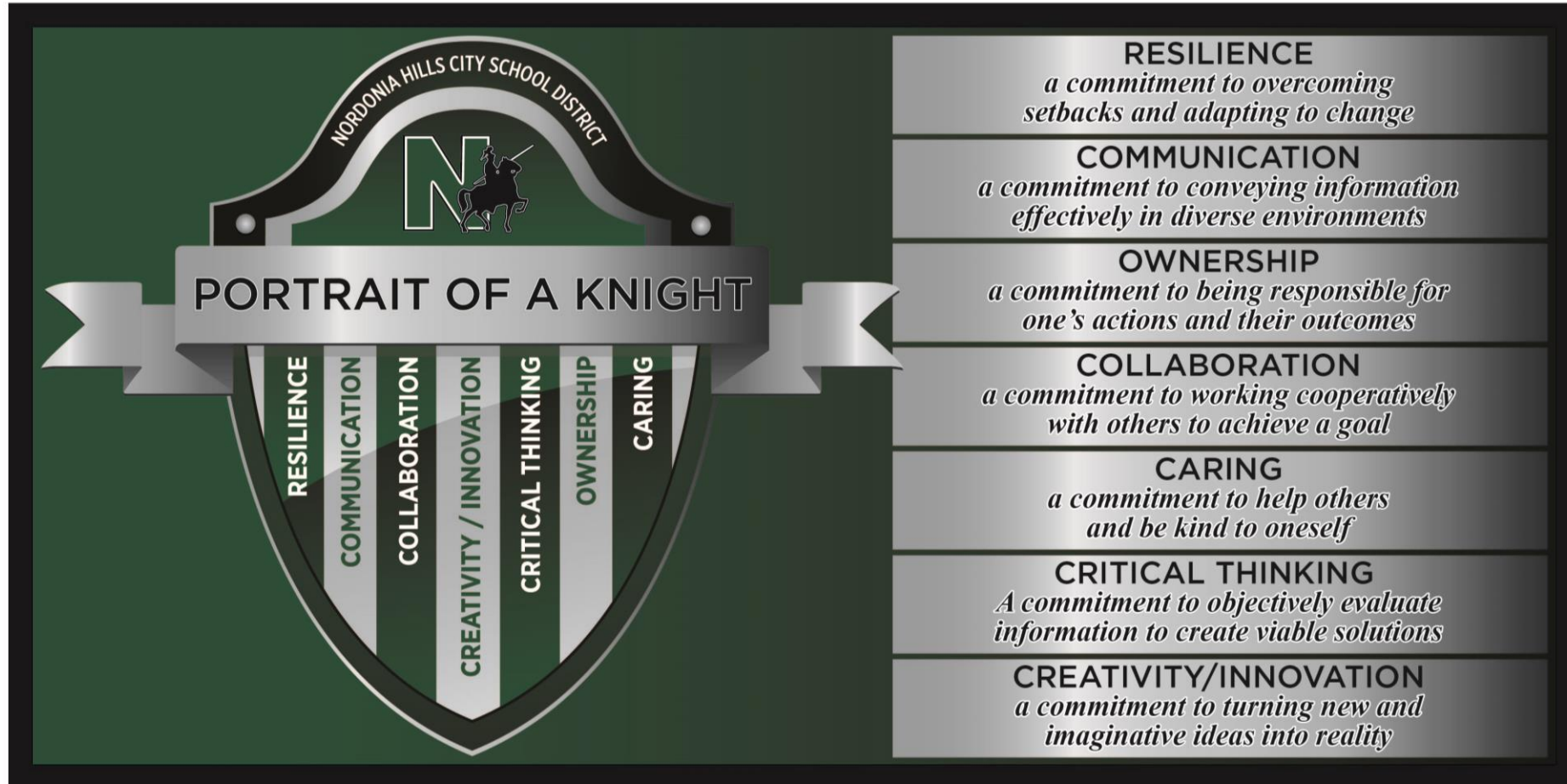
*How do the
facilities support
or hinder*

*“Portrait of a
Knight”?*





BACKGROUND DATA





HISTORICAL ENROLLMENT



Nordonia Hills Historical Enrollments by School Year												
Grade	2010-11	2011-12	2012-13	2013-14	2014-15	2015-16	2016-17	2017-18	2018-19	2019-20	2020-21	2021-22
PK	54	63	48	35	50	-	-	-	-	-	-	-
K	225	257	257	264	252	227	232	230	246	232	212	177
1	270	235	263	255	279	265	228	246	241	254	246	220
2	274	265	238	251	255	289	261	238	256	232	262	227
3	298	275	271	241	262	264	307	271	248	258	241	258
4	286	297	277	284	246	263	263	310	280	245	263	234
PK-4 Subtotal	1,407	1,392	1,354	1,330	1,344	1,308	1,291	1,295	1,271	1,221	1,224	1,116
5	260	285	291	272	288	255	264	255	315	292	256	255
6	302	260	287	294	276	287	261	282	263	318	304	249
5-6 Grades Subtotal	562	545	578	566	564	542	525	537	578	610	560	504
7	340	316	271	284	299	280	291	271	286	273	326	307
8	322	352	317	267	280	309	283	291	271	281	273	328
7-8 Grades Subtotal	662	668	588	551	579	589	574	562	557	554	599	635
9	373	367	376	325	300	305	322	297	319	286	302	297
10	355	360	352	364	325	290	309	319	290	320	293	307
11	369	338	337	329	342	312	286	305	326	288	332	288
12	339	371	331	339	332	346	318	293	304	321	286	331
9-12 Grades Subtotal	1,436	1,436	1,396	1,357	1,299	1,253	1,235	1,214	1,239	1,215	1,213	1,223
PK-12 Total	4,067	4,041	3,916	3,804	3,786	3,692	3,625	3,608	3,645	3,600	3,596	3,478

Source: Ohio Department of Education





PROJECTED ENROLLMENT



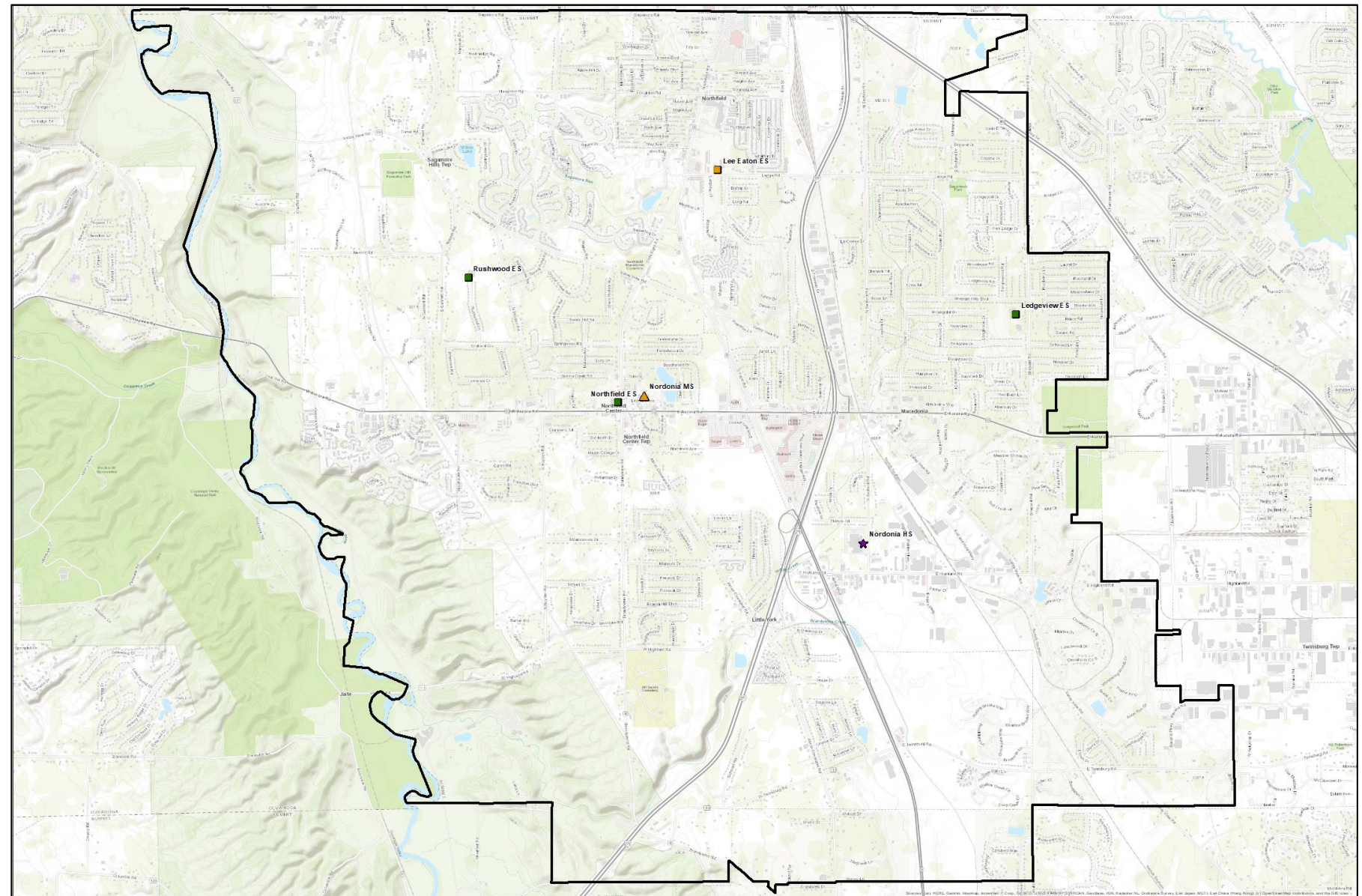
Nordonia Hills Projected Enrollments by School Year								
Grade	2022-23	2023-24	2024-25	2025-26	2026-27	2027-28	2028-29	2029-30
PK special needs	40	37	38	38	38	38	38	38
K	239	219	224	224	224	224	224	224
1	236	251	229	234	234	234	234	234
2	219	239	254	232	238	238	238	238
3	208	227	247	263	240	246	246	246
4	260	209	228	249	264	242	247	247
PK-4 Subtotal	1,202	1,182	1,220	1,240	1,238	1,222	1,227	1,227
5	277	263	212	231	252	267	245	250
6	254	285	270	217	237	259	275	251
5-6 Grades Subtotal	531	548	482	448	489	526	520	501
7	280	259	291	276	222	242	264	281
8	269	280	259	291	276	222	242	264
7-8 Grades Subtotal	549	539	550	567	498	464	506	545
9	332	287	299	277	311	295	237	259
10	349	332	288	299	277	311	295	237
11	217	258	246	213	221	205	230	218
12	226	218	260	248	214	223	206	232
9-12 Grades Subtotal	1,124	1,095	1,093	1,037	1,023	1,034	968	946
Career Tech Off-Site	113	121	129	118	111	109	111	115
PK-12 Total	3,519	3,485	3,474	3,410	3,359	3,355	3,332	3,334

Source: FutureThink



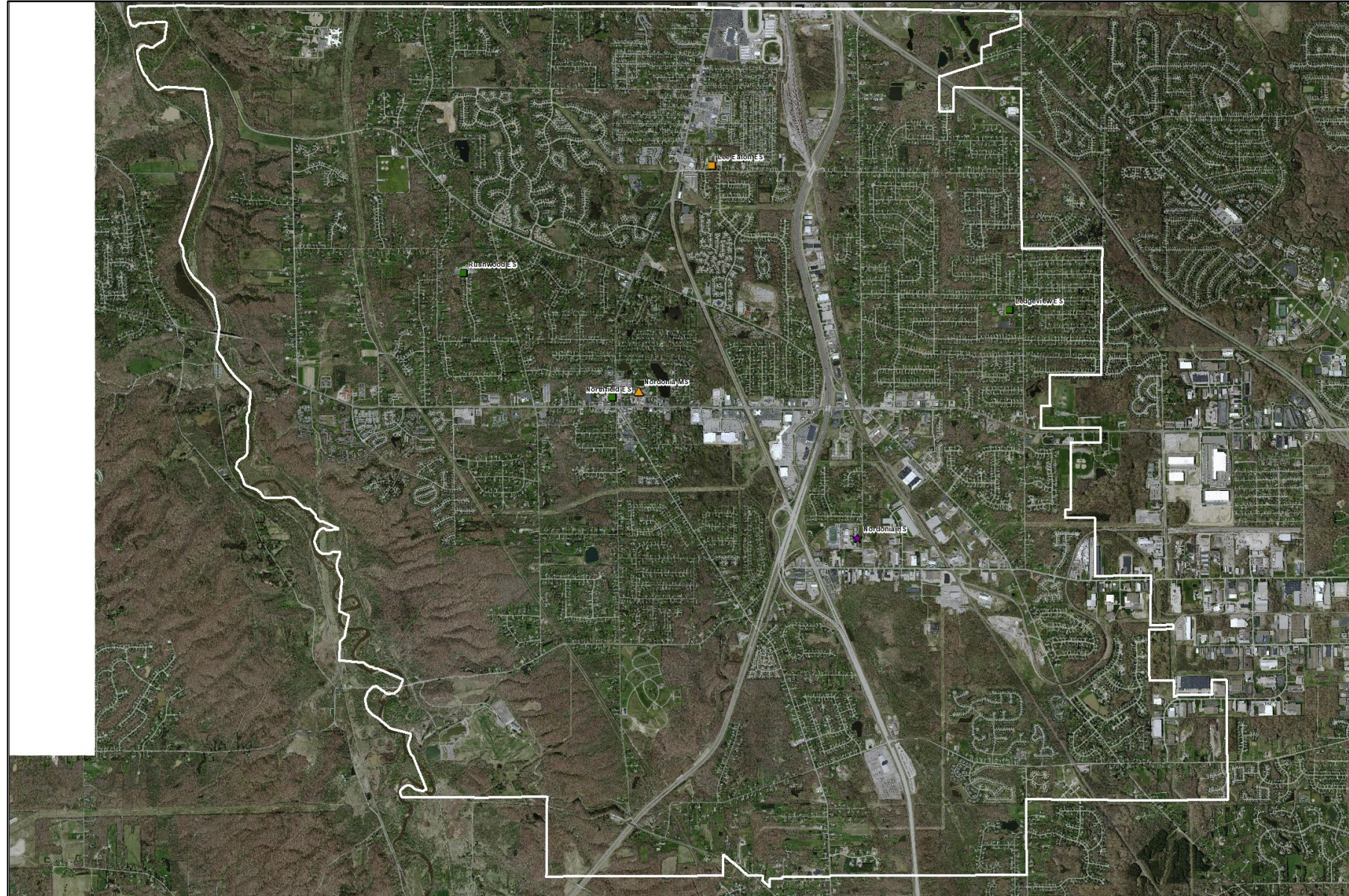


DISTRICT MAP





DISTRICT MAP





ALL SITES



Ledgeview ES



Lee Eaton ES



Nordonia HS / Transportation



Rushwood ES



Nordonia MS



Northfield ES





NORDONIA HIGH SCHOOL



High School Site: 41.2 acres
Softball Site: 5.6 acres
Transportation Site: 3.9 acres

Grades: 9-12





NORDONIA HIGH SCHOOL





NORDONIA MIDDLE SCHOOL

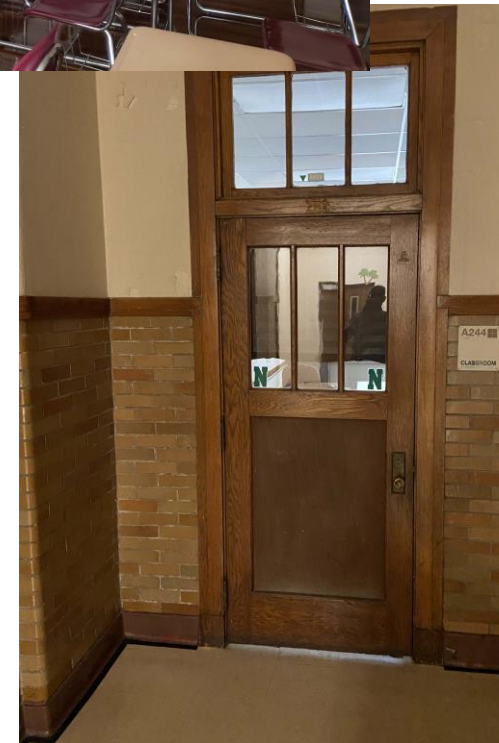


Site: 11 acres
Grades: 7-8





NORDONIA MIDDLE SCHOOL

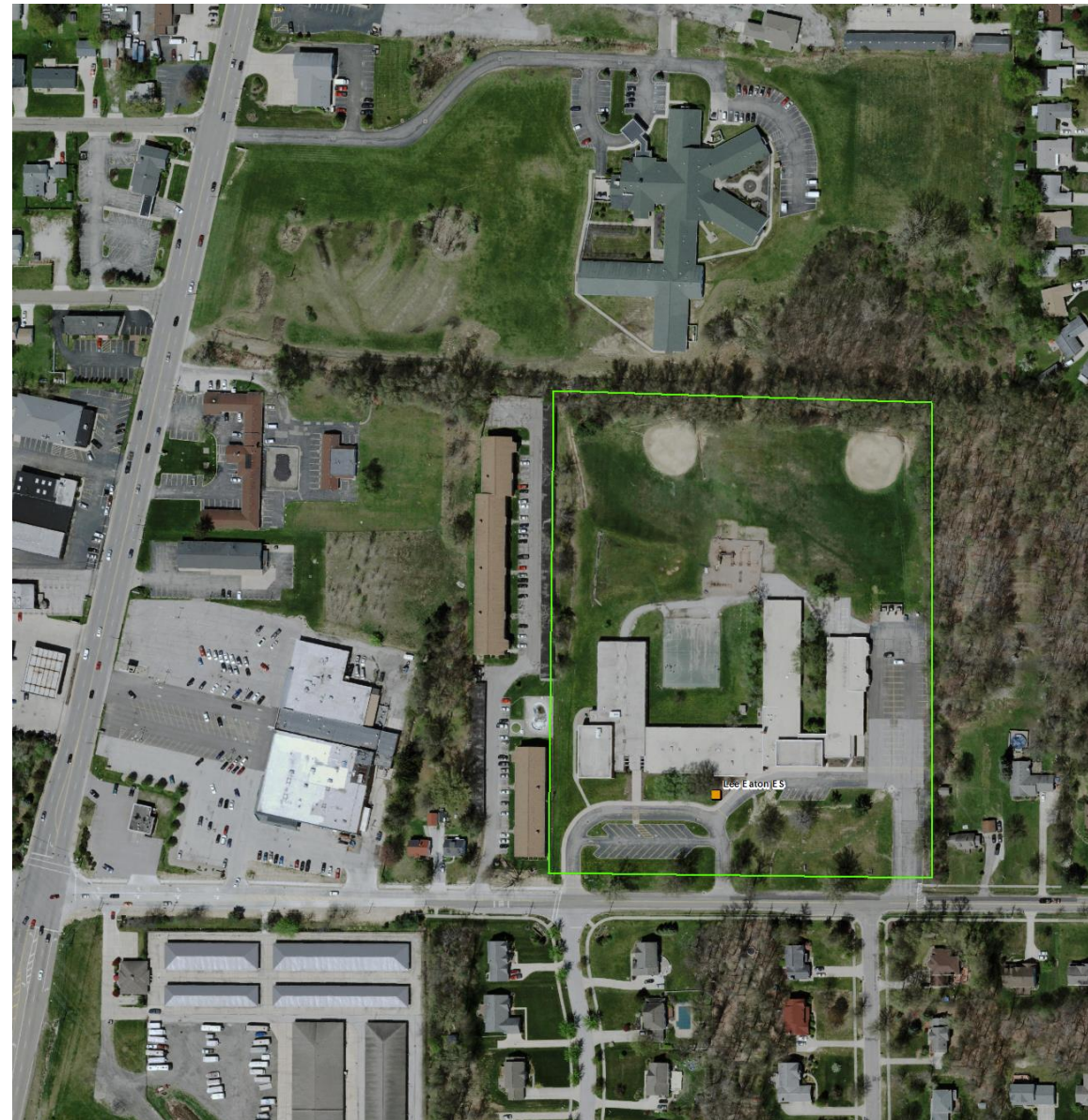




LEE EATON ELEMENTARY SCHOOL

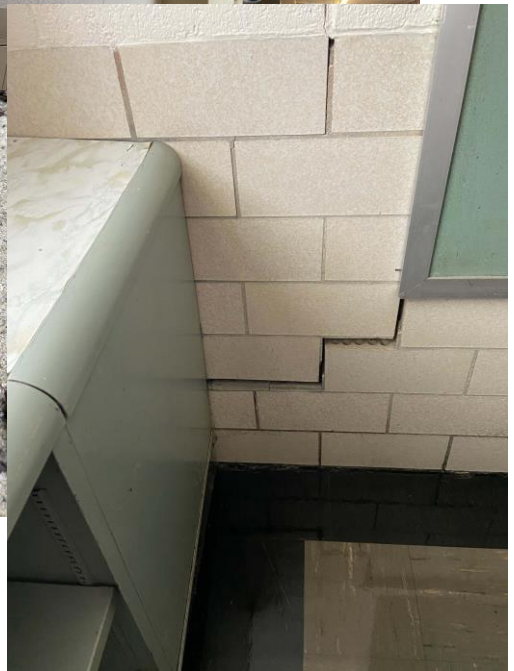


Site: 11.5 acres
Grades: 5-6





LEE EATON ELEMENTARY SCHOOL





NORTHFIELD ELEMENTARY SCHOOL

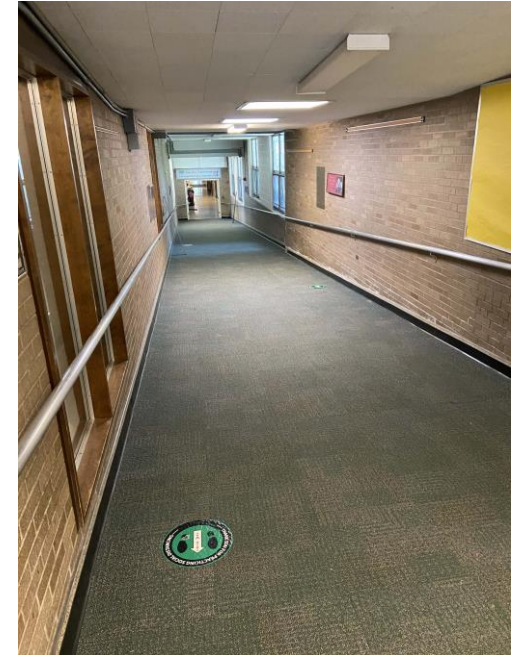


Site: 6.74 acres
Grades: K-4





NORTHFIELD ELEMENTARY SCHOOL





RUSHWOOD ELEMENTARY SCHOOL

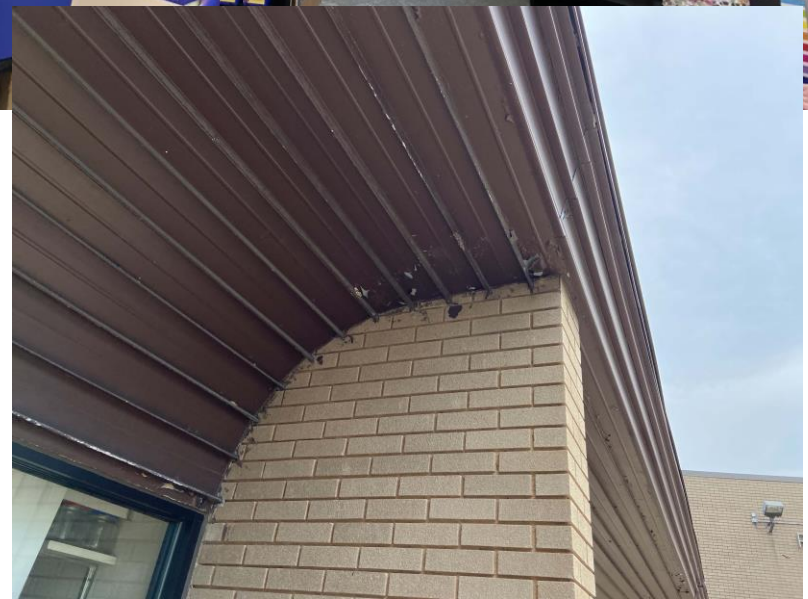


Site: 21.9 acres
Grades: K-4





RUSHWOOD ELEMENTARY SCHOOL





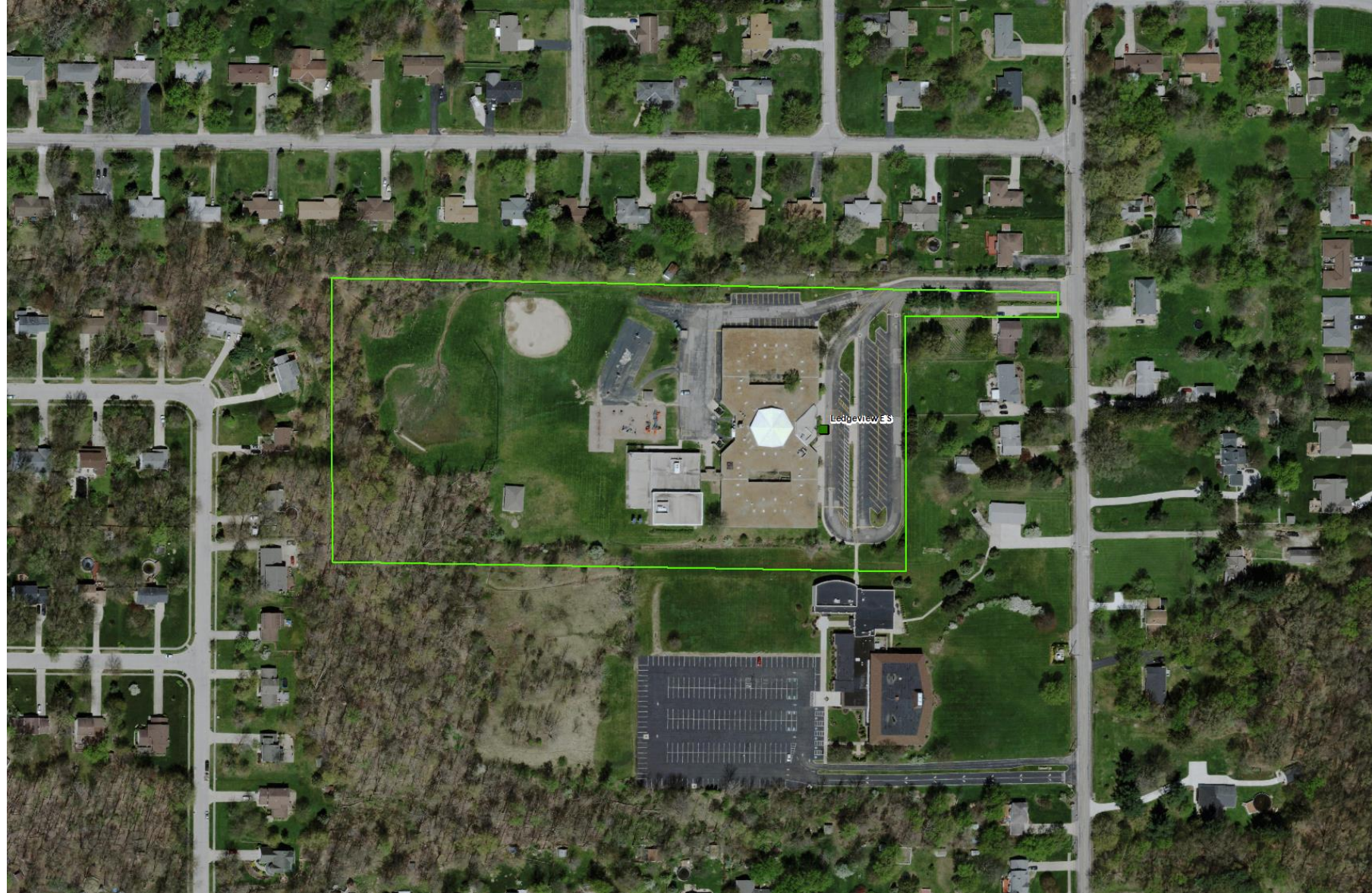
LEDGEVIEW ELEMENTARY SCHOOL



Ledgeview ES

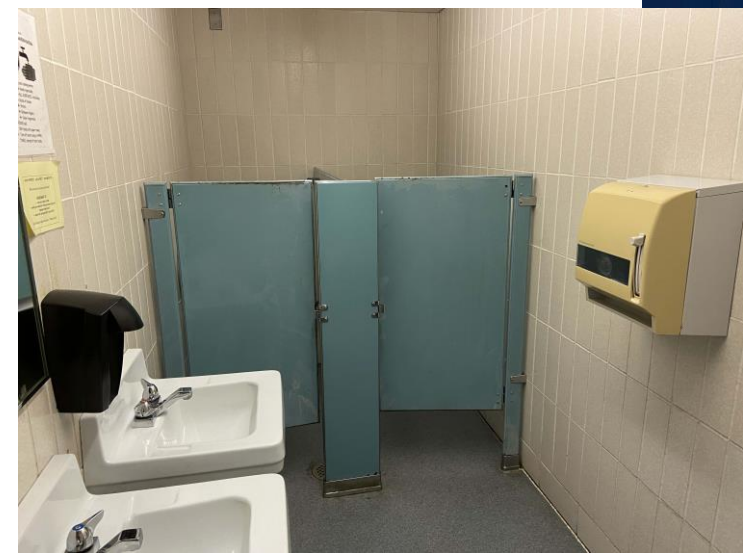
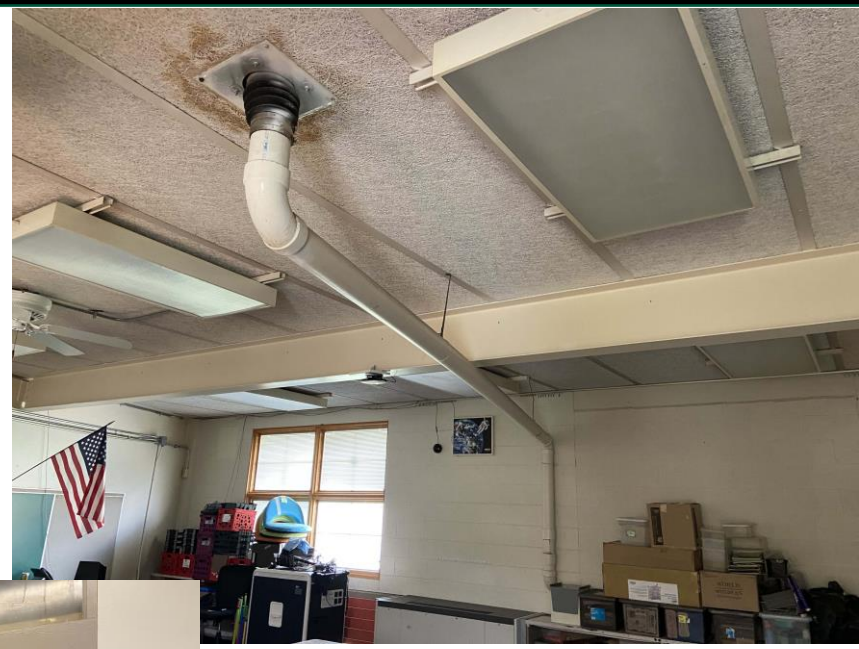
Site: 11.6 acres

Grades: K-4





LEDGEVIEW ELEMENTARY SCHOOL





PURPOSE OF TONIGHT'S MEETING



- High level discussion around educational facilities and program concepts
- Your feedback on these concepts will define the educational framework parameters that the committee will use to develop options
- Individual Survey
- Small Group Discussion
- Gallery Walk



TERMS & DEFINITIONS



Capacity: The number of students a school building can hold.

Class size: The number of students within a classroom, completely independent of school size.

Enrollment: The number of students attending a particular school or district.

Historical Enrollment: The number of students attending a particular school or district in the past. For example, if we say the historical enrollment of Washington Elementary School in 2010-2011 was 543 students, we are indicating that the number of students attending that school in that year in the past was 543 students.

OFCC (Ohio Facilities Construction Commission): State Agency that partners with school districts to fund capital improvements.

Program Requirements: What the facility needs to effectively deliver the curriculum.

Programs: The curriculum that is taught / delivered.

Projected Enrollment: Student attendance forecast.





TERMS & DEFINITIONS



Renovation: Modification of the interior of a facility. Minor renovation includes upgrades to furniture, fixtures, and equipment (FF&E) and potentially a single system (electrical, plumbing, etc.). Moderate renovation includes upgrades to FF&E and more than one system. Major renovation includes gutting the interior of the facility, upgrades to FF&E and most if not all systems.

Small School: School with a relatively low student enrollment (number of students in a facility), completely independent of class size.

Shared Public Community Space: Spaces within a facility or on a site that are used by the community before, during, and/or after the school day such as gymnasiums, tracks, and library/media centers. Typically there is a joint use agreement with partnering agencies.

School Site: The acreage on which a school facility and its surrounding exterior features sit such as parking lots, sidewalks, playgrounds, fields, play courts, etc.

STEM / STEAM: Thematic curriculums – Science, Technology, Engineering, Math / Science, Technology, Engineering, Arts, Math.

Student Services: support services that students receive above standard curriculum (e.g. counselors, psychologists, etc.)

Utilization: Enrollment divided by capacity.



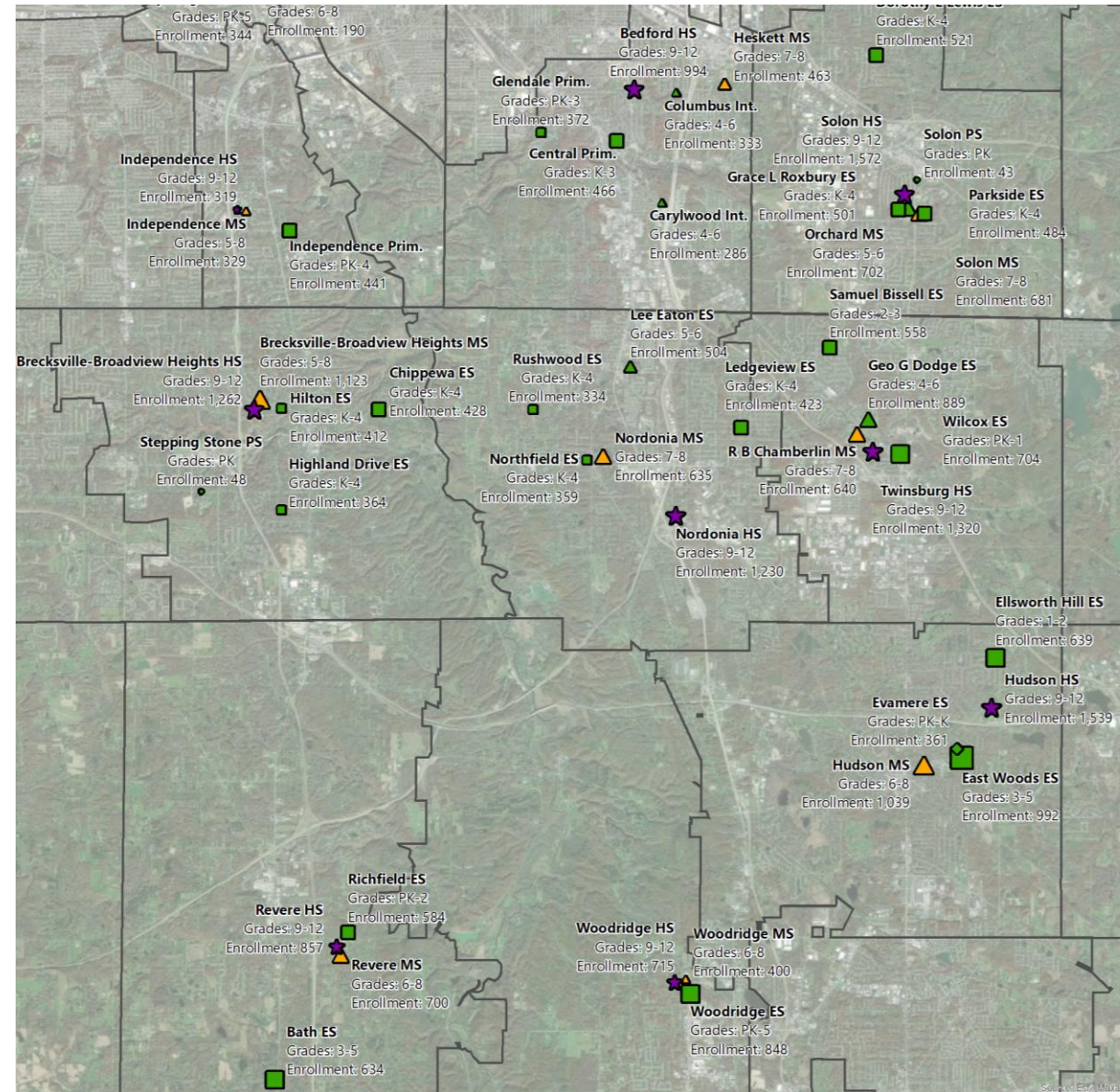


MAP OF NEIGHBORING SCHOOL DISTRICTS



District	Schools	Grades Served	Enrollment	Students / Grade
Bedford City Schools: PK-3, 4-6, 7-8, 9-12 2,914 Students	Central Primary School	K-3	466	117
	Glendale Primary School	PK-3	372	88
	Carylwood Intermediate School	4-6	286	95
	Columbus Intermediate School	4-6	333	111
	Heskett Middle School	7-8	463	232
	Bedford High School	9-12	994	249
Brecksville-Broadview Heights City Schools: PK, K-4, 5-8, 9-12 3,637 Students	Stepping Stone Preschool	PK	48	48
	Chippewa Elementary School	K-4	428	86
	Highland Drive Elementary School	K-4	364	73
	Hilton Elementary School	K-4	412	82
	Brecksville-Broadview Heights Middle School	5-8	1,123	281
	Brecksville-Broadview Heights High School	9-12	1,262	316
Hudson City Schools: PK-K, 1-2, 3-5, 6-8, 9-12 4,570 Students	Evamere Elementary School	PK-K	361	289
	Ellsworth Hill Elementary School	1-2	639	320
	East Woods Elementary School	3-5	992	331
	Hudson Middle School	6-8	1,039	346
	Hudson High School	9-12	1,539	385
	Independence Local Schools: PK-4, 5-8, 9-12 1,089 Students	Independence Primary School	PK-4	441
Independence Middle School		5-8	329	82
Independence High School		9-12	319	80
Nordonia Hills City Schools K-4, 5-6, 7-8, 9-12 3,485 Students		Ledgeview Elementary School	K-4	423
	Northfield Elementary School	K-4	359	72
	Rushwood Elementary School	K-4	334	67
	Lee Eaton Elementary School	5-6	504	252
	Nordonia Middle School	7-8	635	318
	Nordonia High School	9-12	1,230	308
Revere Local Schools PK-2, 3-5, 6-8, 9-12 2,775 Students	Richfield Elementary School	PK-2	584	180
	Bath Elementary School	3-5	634	211
	Revere Middle School	6-8	700	233
	Revere High School	9-12	857	214
Solon City Schools PK, K-4, 5-6, 7-8, 9-12 4,504 Students	Solon Preschool	PK	43	43
	Dorothy E Lewis Elementary School	K-4	521	104
	Grace L Roxbury Elementary School	K-4	501	100
	Parkside Elementary School	K-4	484	97
	Orchard Middle School	5-6	702	351
	Solon Middle School	7-8	681	341
Twinsburg City Schools PK-1, 2-3, 4-6, 7-8, 9-12 4,111 Students	Solon High School	9-12	1,572	393
	Wilcox Elementary School	PK-1	704	313
	Samuel Bissell Elementary School	2-3	558	279
	Geo G Dodge Elementary School	4-6	889	296
	R B Chamberlin Middle School	7-8	640	320
Woodridge Local Schools PK-5, 6-8, 9-12 1,963 Students	Twinsburg High School	9-12	1,320	330
	Woodridge Elementary School	PK-5	848	136
	Woodridge Middle School	6-8	400	133
	Woodridge High School	9-12	715	179

Source (2020): <https://education.ohio.gov/Topics/Data/Frequently-Requested-Data/Enrollment-Data>



Source: Ed. Maps, Inc.



SCHOOL SIZE OBSERVATIONS



- There are 24 elementary schools in Nordonia Hills and neighboring districts. Their enrollments range from 286 students to 992 students
- The average enrollment of these 24 elementary schools is 527
- All the Nordonia Hills elementary schools have a lower enrollment than the average of 527
- The average enrollment of the Nordonia Hills elementary schools is 405
- Rushwood & Northfield elementary schools are the 3rd and 4th smallest out of the 24 elementary schools
- Twinsburg has higher enrollment than Nordonia Hills and each grade level is only in one facility. Twinsburg has one boundary for the entire district (Single grade level buildings)



SCHOOL SIZE CONSIDERATIONS



- There is no “best practice” as it relates to school size
- School size is completely independent of class size
- *Program Offerings:* As school size increases so does the ability to offer cost effective additional educational opportunities
- *Traffic & walkability:* As facility size increases the site elements such as parking, sidewalks, fields, etc. also need to increase. The potential for students to be bussed increases with a larger school. (School outside of neighborhood)
- *Community:* Small neighborhood schools tend to have a greater sense of belonging for most families and students. Large schools provide more diversity for students and families with which to find a connection.



GRADE CONFIGURATION CONSIDERATIONS



- Surrounding school districts to which Nordonia Hills was compared are relatively the same size geographically
- There is no “best practice” grade configuration
- Transitions: some grade configurations have more transitions than others but not all transitions have the same impact
- Vertical curriculum alignment: access to services at more than one grade level
- Sibling pick up & drop off: smaller grade spans have a greater possibility of siblings being in different buildings



INDIVIUAL SURVEY



Questions #1 to #5 are Demographics:
Age, Affiliation with District, School Affiliation, Community of Residence, etc.



[https://www.surveymonkey.com/r/Nordonia Hills Ed Framework](https://www.surveymonkey.com/r/Nordonia_Hills_Ed_Framework)



SURVEY



6. What is your perception of the overall physical condition of the District facilities and site elements (fields, parking, etc.)? (Please only provide responses on those facilities you have been in within the last 5 years)

	Good	Needs minor improvement(s)	Needs major renovations or replaced	Don't know / No opinion / Haven't been in this facility within the last 5 years
Ledgeview Elementary	<input type="radio"/>	<input type="radio"/>	<input type="radio"/>	<input type="radio"/>
Northfield Elementary (excluding BOE offices)	<input type="radio"/>	<input type="radio"/>	<input type="radio"/>	<input type="radio"/>
Rushwood Elementary	<input type="radio"/>	<input type="radio"/>	<input type="radio"/>	<input type="radio"/>
Lee Eaton Elementary	<input type="radio"/>	<input type="radio"/>	<input type="radio"/>	<input type="radio"/>
Nordonia Middle School	<input type="radio"/>	<input type="radio"/>	<input type="radio"/>	<input type="radio"/>
Nordonia High School	<input type="radio"/>	<input type="radio"/>	<input type="radio"/>	<input type="radio"/>
Board of Education Office @ Northfield Elementary	<input type="radio"/>	<input type="radio"/>	<input type="radio"/>	<input type="radio"/>

If you answered "needs minor improvement or major renovations" what do you believe can be done to improve or renovate those facilities?



SURVEY



7. If it is determined that a facility has reached the end of its useful life (poor condition and/or not suitable to meet current/future educational needs), which of the following factors should be considered in deciding whether or not the facility should be renovated or demolished and replaced?

- Historical, Architectural or Cultural Significance
- Physical condition of school
- Safety & security of school
- Overall cost of the project
- The school building does not have the right spaces for the current programs being taught
- Other (please specify)



SURVEY



8. Which, if any, of the facilities are architecturally, historically, or culturally significant to the point that they should be preserved regardless of cost?

- None
- Ledgeview ES
- Northfield ES
- Rushwood ES
- Lee Eaton ES
- Nordonia MS
- Nordonia HS

If any facilities were selected, please explain your selection(s).

9. Do you think it is more cost effective to:

- Renovate buildings that have reached the end of their useful life
- Replace buildings that have reached the end of their useful life
- It depends (please specify)



SURVEY



10. Small schools (less than 350 students) are costly to operate and potentially provide fewer programs while large schools (500 or more students) are less costly to operate and provide more educational opportunities due to economies of scale. (Size of school is completely independent from class size) Please indicate your preference using the slider below.

Small Schools (less than 350 students)

Large Schools (500 or more students)

Note: Slider will be centered on the electronic version of the survey



SURVEY



11. What do you feel is the ideal grade configuration for the District?

- K-4, 5-6, 7-8, 9-12 (Current)
- K-2, 3-5, 6-8, 9-12
- K-3, 4-8, 9-12
- K-4, 5-8, 9-12
- K-5, 6-8, 9-12
- Other (please specify)

12. Based on your selected grade configuration above, how you think schools should be configured in the District? How many facilities for each grade configuration? (For Example: Three K-4, One 5-6, One 7-8, One 9-12)



SURVEY



15. Please indicate the extent to which the following factors may have influenced your decision to live in the School District.

	Important consideration	No Opinion	Not a consideration
Academic Opportunities	<input type="radio"/>	<input type="radio"/>	<input type="radio"/>
Alumni / family history	<input type="radio"/>	<input type="radio"/>	<input type="radio"/>
Before/After school care programs	<input type="radio"/>	<input type="radio"/>	<input type="radio"/>
Distance of schools from work/residence	<input type="radio"/>	<input type="radio"/>	<input type="radio"/>
Extra-curricular Activities	<input type="radio"/>	<input type="radio"/>	<input type="radio"/>
Overall Reputation	<input type="radio"/>	<input type="radio"/>	<input type="radio"/>
Physical condition of the schools	<input type="radio"/>	<input type="radio"/>	<input type="radio"/>
Quality of Academic Programs (Special Education, STEM, test scores, fine arts, advanced placement, dual credit, etc.)	<input type="radio"/>	<input type="radio"/>	<input type="radio"/>
College Scholarships	<input type="radio"/>	<input type="radio"/>	<input type="radio"/>
Skilled Trades	<input type="radio"/>	<input type="radio"/>	<input type="radio"/>
Employment Percentage Rate	<input type="radio"/>	<input type="radio"/>	<input type="radio"/>
Quality of Sports/Athletic Programs/Activities/Facilities	<input type="radio"/>	<input type="radio"/>	<input type="radio"/>
Safety	<input type="radio"/>	<input type="radio"/>	<input type="radio"/>
Diversity	<input type="radio"/>	<input type="radio"/>	<input type="radio"/>

Other (please specify)



SURVEY



16. What is your level of interest in having spaces available for shared public community use?

	Interested	No Opinion / Don't Know	Not Interested
Additional Gymnasium Space / Indoor Walking Track	<input type="radio"/>	<input type="radio"/>	<input type="radio"/>
Auditorium / Theater for Performances & Presentations	<input type="radio"/>	<input type="radio"/>	<input type="radio"/>
Library / Media Center	<input type="radio"/>	<input type="radio"/>	<input type="radio"/>
Senior Center	<input type="radio"/>	<input type="radio"/>	<input type="radio"/>
Playground / Splash Pad	<input type="radio"/>	<input type="radio"/>	<input type="radio"/>

Other (please specify)



SURVEY



17. The District currently operates three (3) tiers of bus routes resulting in multiple start times at the elementary level (Ledgeview, Northfield, and Rushwood start at 9:00am while Lee Eaton starts at 7:25).

Tier 1: High School 7:20am to 2:11pm *and* Lee Eaton 7:25am to 2:10pm

Tier 2: Middle School *and* St. Barnabas School 8:00am to 2:50pm

Tier 3: Ledgeview ES, Northfield ES, and Rushwood ES 9:00am to 3:30pm

Please provide your level of agreement with the following concepts.

	Agree	Neutral	Disagree
No changes are needed, start times are fine as they are.	<input type="radio"/>	<input type="radio"/>	<input type="radio"/>
Explore facility options (such as different different grade configurations), that can reduce the number of start times.	<input type="radio"/>	<input type="radio"/>	<input type="radio"/>
Contract more buses (increasing operational costs) to expand the transportation capacity which can reduce the number of start times.	<input type="radio"/>	<input type="radio"/>	<input type="radio"/>



SURVEY



18. As the steering committee is formulating facility options, is there anything else you would like us to consider?



GROUP SURVEY



[https://www.surveymonkey.com/r/GROUP Nordonia Hills CD1](https://www.surveymonkey.com/r/GROUP_Nordonia_Hills_CD1)



PROJECT WEBSITE



<https://coopstratprojects.com/nordoniahillscitysd/>



THANK YOU!

Next Meeting:

Community Dialogue #2:
Wednesday January 12
High School Cafeteria
6:00 pm

