



---

# **FACILITY MASTER PLAN:**

---

## **COMMUNITY DIALOGUE #1**





# AGENDA



1. Process & Timeline
2. Purpose of Today's Meeting – high level feedback on big picture concepts that will help define an envelope to develop options within
3. Background Information
4. Overview of Concepts
5. Individual Questionnaire (15-20 minutes) – QR Codes on the tables – paper available upon request.
6. Small Group Questionnaire (45-60 minutes)
7. Reporting out: Paper Flipchart Gallery Walk



# PROCESS OVERVIEW



## Project Start-Up

### Plan for Planning

- Schedule
- Components
- Deliverables

### Futures Conference

### Steering Committee

- Guides Process
- Review Documents

### Steering Committee Meeting



## Data Collection & Analysis

### Background Data

- Facility Condition
- Historical/Projected Enrollment
- Capacity
- Programs
- Financial Analysis

### Geographic Information Systems (GIS)

- Student Locations
- Attendance Boundaries
- Housing & Demographics
- Geographic Base Layers

### Steering Committee Meeting



## Establish Educational Framework

### Community Dialogue #1-Framework

- Background Presentation
- Questionnaire
- Small Group Work
- Report Out

### On-Line Questionnaire

### Results Report

- Tabulates & Summarizes Community Criteria Preference

### Steering Committee Meeting



## Develop Options

### Work Session

- District Input
- Apply Educational Framework

### Options Packet

- Facility Actions
- Impacts
- Costs

### Steering Committee Meeting



## Community Engagement

### Community Dialogue #2-Options

- Options Presentation
- Questionnaire
- Small Group Work
- Report Out

### Online Questionnaire

### Results Report

- Tabulates & Summarizes Community Criteria Preference

### Steering Committee Meeting



## Determine Recommendations

### Final Report & Recommendations

- Executive Summary
- Supporting Documentation

### Board Presentation

### Steering Committee Meeting





# TIMELINE



## Overall Project Timeline:

Task / Activity	2021												2022							
	April	May	June	July	August	September	October	November	December	January	February	March	April	May	June	July	August	September	October	November
Kickoff Meeting																				
Assessment Validation																				
Background Data Collection																				
Futures Conference																				
Steering Committee																				
Educational Framework																				
Options Development																				
Community Feedback on Options																				
Recommendation Development																				
Board Meetings																				
Controlling Board																				
November Ballot Deadline																				

## Community Meeting Schedule:

- ✓ **Educational Futures Conference:** September 22, 6:00 pm – 8:00 pm @ NHS Cafeteria
- **Community Dialogue #1/ Educational Framework:** November 10 , 6:00 pm – 8:00 pm @ NHS Cafeteria
- **Community Dialogue #2/ Facility Options:** January 12 , 6:00 pm – 8:00 pm @ NHS Cafeteria
- **Board Discussion and Action:** Dates TBD, March 2022





# PROJECT WEBSITE



<https://coopstratprojects.com/nordoniahillscitysd/>

- Agendas
- Presentations
- Questionnaires
- Background Information
- Schedule

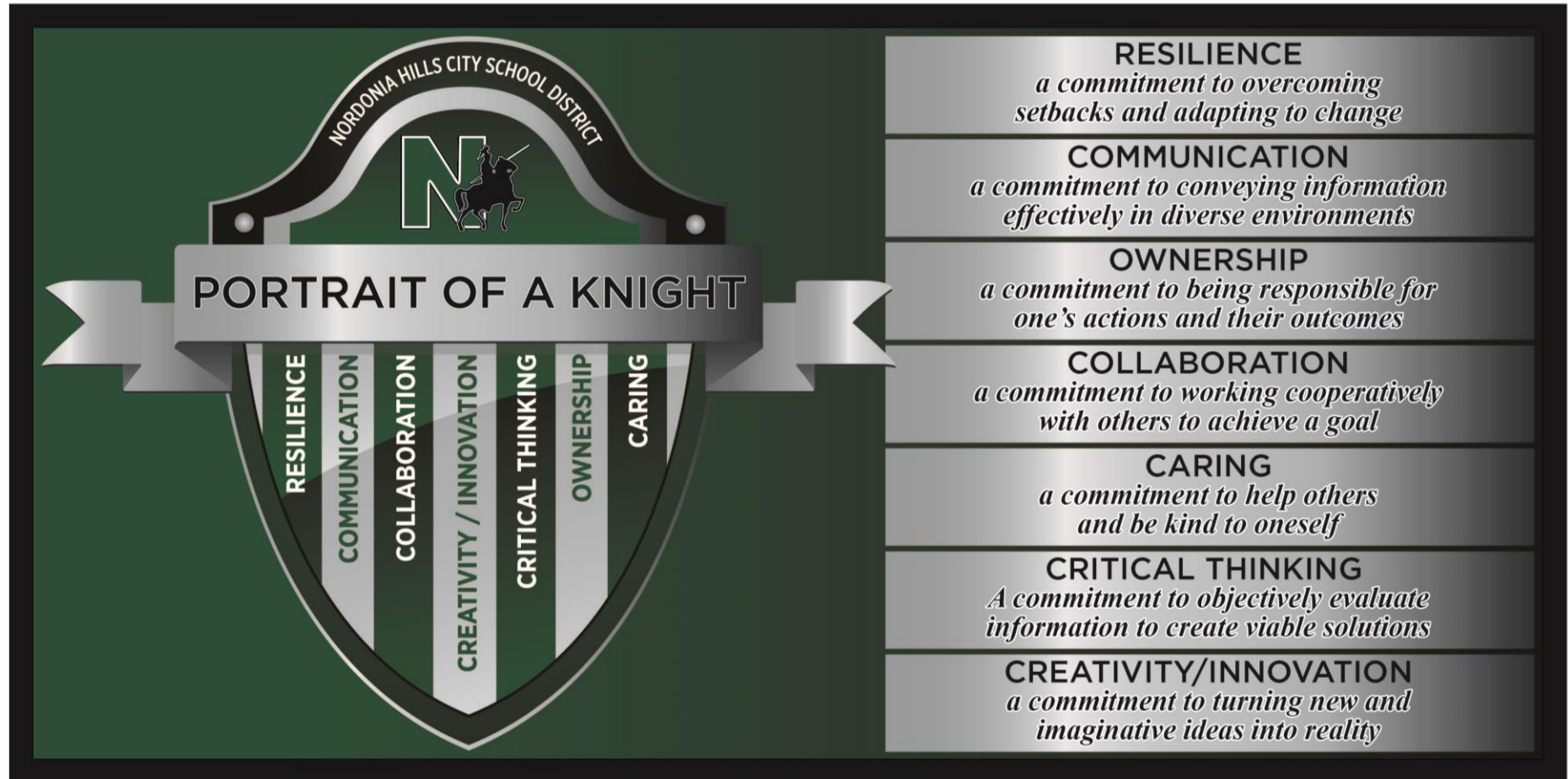
The screenshot displays the website's layout. At the top, the Nordia Hills City School District logo is on the left, and the Cooperative Strategies logo, with the tagline 'ASSESS • PLAN • FUND • BUILD', is on the right. Below the logos, a navigation menu on the left lists 'HOME', 'Process', and 'Resources'. The main content area, titled 'Home', contains a welcome message: 'Welcome to the Nordia Hills City School District's Master Plan Website. This space will serve as the resource for all information related to the process. This site will be updated regularly throughout the process. Please, check back often for new information.' Below this, a section titled 'Facility Master Plan Overview' is accompanied by a banner image of diverse, smiling children.



# PORTRAIT OF A KNIGHT



- Developed through a community process
- Adopted over a year ago
- Board approved



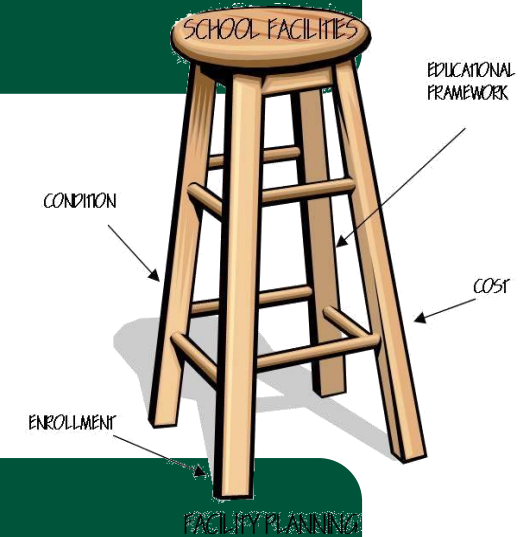


# FACILITIES MASTER PLAN



## Facility Master Plan aligns facilities to the Portrait of a Knight

- Educational Framework
- Condition & Adequacy Assessments
- Enrollment vs. Capacity
- Cost to correct deficiencies & provide equitable facilities



## Validating Needs – OFCC Assessment Data

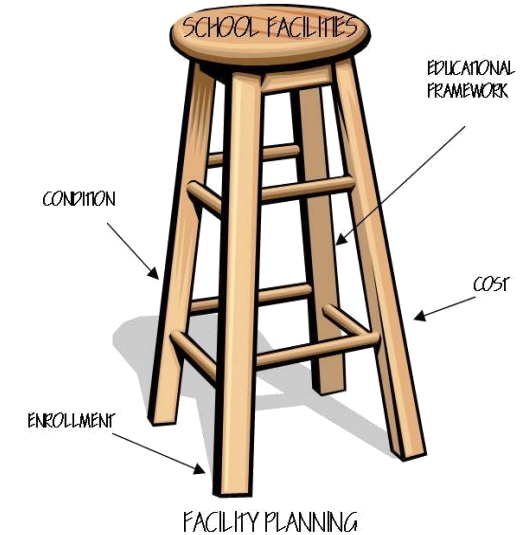


# WHAT DOES A FACILITY MASTER PLAN DO?



## Examples of Facility Master Plan Actions:

- Construct new facilities or add on to existing facilities
- Renovate / Modernize existing facilities
- Repurpose or consolidate facilities
- Program or grade configuration change







# FUTURES CONFERENCE SUMMARY



- Wednesday, September 22, 2021
- Approximately 75 attendees
- Online Questionnaire for a week following in person meeting – with approximately 20 respondents
- 4 Questions:
  1. *What qualities should the students of 2050 have?*
  2. *What are the careers of 2050?*
  3. *What does the school of 2050 look like?*
  4. *How do the facilities support or hinder "Portrait of a Knight"?*



# FUTURES CONFERENCE SUMMARY



- 1) Tech Savvy Solvers  
Problem Thinkers  
Quick Resilient  
Logical  
Career Ready
  - 2) Space Health Care  
Environment  
Infrastructure
  - 3) Open Space  
Screens  
Environmentally friendly  
Hand free  
Collaborate areas
  - 4) No collaborative areas - communication  
No bright colors - creativity
- Social Skills  
Flexible  
Independent  
Motivated
- Trades  
Technology  
Finance  
Entrepreneurship
- Safe  
Bullet Proof
- NEW = Bright  
Modern  
Open spaces
- 3 Gold

- 1. - FLEXIBLE W/ TECHNOLOGY  
- HARD WORKING  
- BEING PREPARED/LIFE SKILLS
- 2. - ARTIFICIAL INTELLIGENCE  
- TRADES (BUILDING/MECHANICAL)  
- HEALTH CARE  
- GREEN ENERGY/ENVIRONMENTAL
- 3. - COLLABORATIVE SPACES  
- LEARNING SPACE  
- ENERGY EFFICIENCY/INDEPENDENCE  
- FRESH AIR  
- WELL LIT/NATURAL LIGHT
- 4. - THE SCHOOL ENVIRONMENT FOSTERS THE OUTCOME OF THE STUDENT  
- MAKE THE STUDENTS EXCITED ABOUT COMING TO SCHOOL  
- BEING PROUD OF WHERE YOU CAME FROM

- 1. Qualities of Student in 2050  
• innovative  
• self-starters  
• motivated  
• global  
• confident
  - 2. Careers of 2050  
• IT  
• Robotics  
• Renewable energy/eco  
• Medical/health  
• trades
  - 3. Schools of 2050  
• remote or hybrid option  
• teaching life skills  
• choose career path earlier on
  - 4. Facilities' Support  
• Buildings  
• De-centralization creates opportunities for leadership + resilience, but may negatively impact standardization and student collaboration/communication  
• Space is designed very traditionally. Opening up spaces could positively impact collaboration + creativity  
• lack of comfortable temps can negatively impact the learning environment  
• kids need to carry less materials
- work/life balance  
• teach skills that can be used in work  
"Portrait of a Knight"

- 1. RESPONSIBLE  
RESPECTFUL  
MOTIVATED  
ADAPTABILITY  
CONNECTIVITY  
IN-PERSON COMMUNICATION  
COMMUNITY MINDED
- 2. TECHNOLOGY  
ROBOTICS A.I.  
MEDICAL FIELD  
EDUCATORS  
FIRST RESPONDERS  
PUBLIC SERVANTS
- 3. OPEN SPACES  
STATE OF THE ART TECHNOLOGY  
VERSATILITY OF SPACE WE HAVE  
"LESS INDUSTRIAL"
- 4. PRIDE & OWNERSHIP  
IN THE SCHOOL  
BEING A KNIGHT IS COOL!  
IT'S TIME TO PLAN FOR THE FUTURE  
NORWICH BAND IS THE BEST!

- 1 Qualities  
Character  
- Resilient (work ethic)  
- Learns thru experience  
- Integrity
  - 2 Careers  
- Tech (crypto, programming)  
- Trades (make equitable)
  - 3 Schools like  
- Hands on/trades  
- Open + Closed Spaces (different learning space)  
- Physical Wellness  
- How to Adult (finance)
  - 4 Facilities  
support or hinder  
- \$ in facilities  
- Campus/condo learning  
- K-12 same bldg  
- Older kids teach/motivate to younger
- Green, programming  
OPEN = LOUD

- 2050
- 1. Resilient, adaptable, critical thinking, independent, able to collaborate, empathetic + compassionate, hard-working, self-control, big picture vision
  - 2. Careers: Technology, medical fields + healthcare  
Working as a team, no physical workplace  
Service industries, change in careers a few times, more researching careers
  - 3. Adaptable, inviting, flexible areas, wheels, energy efficient, outdoor areas  
room to grow - but to go w/enrollment  
technology-adaptive, community gathering place
  - 4. Safety - conditions - physical age  
Hinders learning - lack of innovation  
Want our students proud of their school





# FUTURES CONFERENCE SUMMARY



1. Collaboration, Global Empathy, Multifaceted, Flexible

2. Tech, mental health, medical, social interaction, government, economic

3. Multiple interactions, open spaces, adaptable, shared goals

4. Multiple testing, spaces for innovation, arts, athletics

5. Outdoor & indoor classrooms, changing classes

6. Outdoor & indoor classrooms, changing classes

7. Outdoor & indoor classrooms, changing classes

8. Outdoor & indoor classrooms, changing classes

9. Outdoor & indoor classrooms, changing classes

10. Outdoor & indoor classrooms, changing classes

1. Empathy Curiosity  
Teamwork / Collaboration  
Ambitious

2. Medical, Ecology, Communication  
Engineering, Education, Trades  
Technology

3. Schools support various  
learning styles/modes  
Blended learning,  
Social/Emotion

Adaptable, creative, multi-taskers,  
critical thinkers, tech savvy.  
resilient, global-minded

Tech, AI, Trades, medical,  
legal, education, farmers,  
engineers, humanitarians

Environmentally-minded,  
less structure-more options,  
open spaces, solar, natural  
light, less industrial, more  
accommodating

Facilities-conditions, safety,  
not enough parking, lacks  
flexibility, wasted space, closed  
off, no A/C

Portrait of a Knight

siloes capacity divided spaces

constantly retrofitted available to community

2050 SCHOOLS

flexible/modular interactive safety-focused connected

community tools building relationships safe spaces wired community

ability to grow building capacity bandwidth within

CAREERS

Science/medical Communication education

AI/robotics science/technical agriculture

trades & services arts & entertainment manufacturing

finance building electrical

QUALITIES

lateral thinkers flexibility global

balanced tech-savvy empowered

communicators inclusive/empathetic

Qualities

- Independence
- Critical Thinking
- Social Interaction
- Self-Discipline
- Respect
- Adaptability
- Adversity-Overcoming
- Open-Minded
- Integrity

Careers

- IT
- Blue Collar Trades
- Welding
- Construction
- Cooling
- Software Engineering
- Cryptocurrency
- Mechanics
- Healthcare Industry
- Manufacturing

2050 School

- Modular
- Flexible
- Efficient
- Hybrid
- Security
- Game
- IT

Portrait

- More Space Needed
- Less student-teacher ratio
- Security
- Spaces/Places for Social Interaction

3. Less Formal, Career-centered, Flexible Schedules

4. Hinder: Conditions of bldg hinder critical thinking - distracting  
Some do not have common areas - hinder creativity

Support: Conditions fosters resiliency



*What  
qualities  
should the  
students of  
2050 have?*







# FUTURES CONFERENCE RESULTS

*What are the  
careers of  
2050?*





# FUTURES CONFERENCE RESULTS

*What does the  
school of 2050  
look like?*





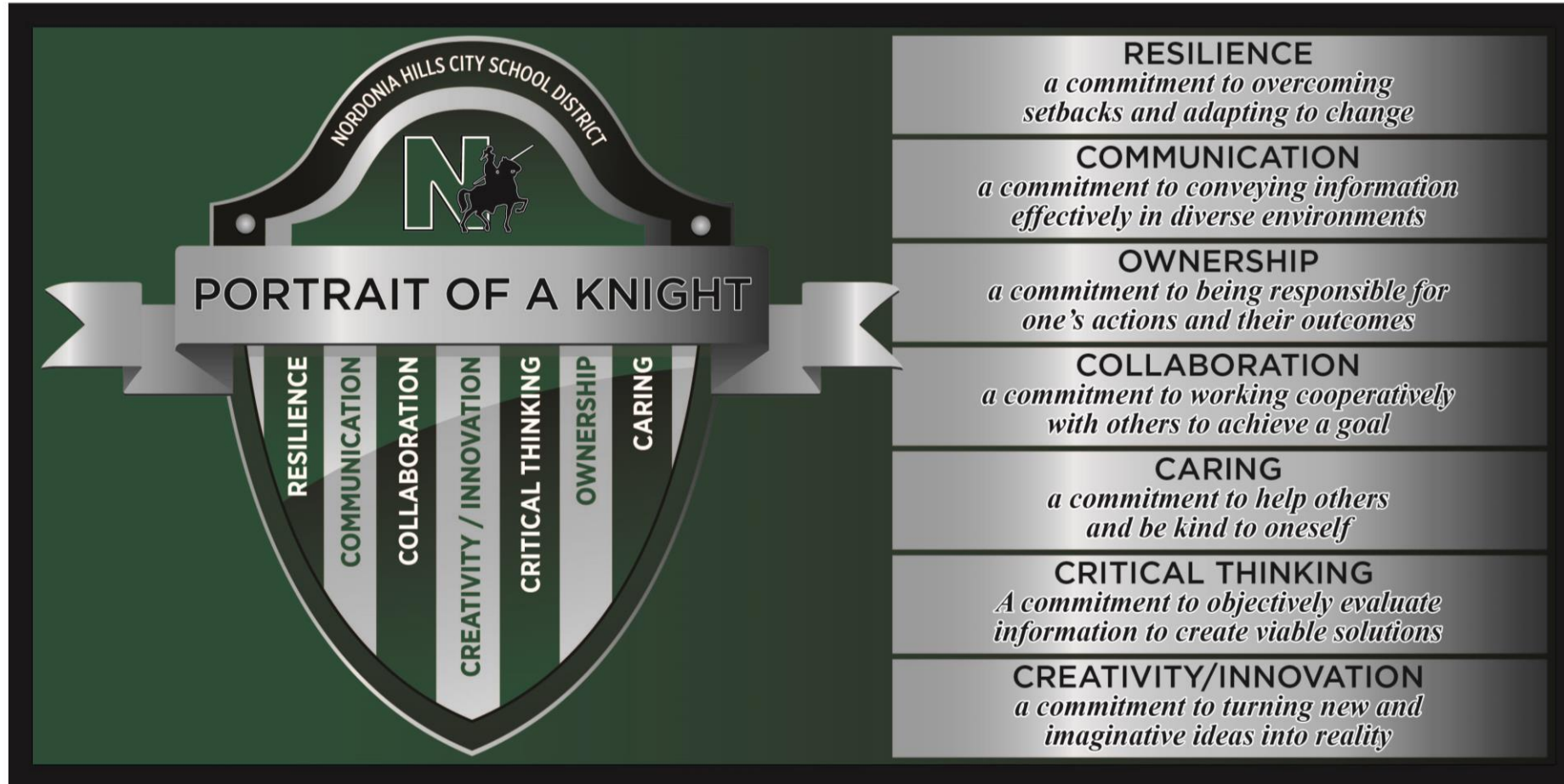
*How do the facilities support or hinder*

[illegible]





# BACKGROUND DATA







# HISTORICAL ENROLLMENT



Nordonia Hills Historical Enrollments by School Year												
Grade	2010-11	2011-12	2012-13	2013-14	2014-15	2015-16	2016-17	2017-18	2018-19	2019-20	2020-21	2021-22
PK	54	63	48	35	50	-	-	-	-	-	-	-
K	225	257	257	264	252	227	232	230	246	232	212	177
1	270	235	263	255	279	265	228	246	241	254	246	220
2	274	265	238	251	255	289	261	238	256	232	262	227
3	298	275	271	241	262	264	307	271	248	258	241	258
4	286	297	277	284	246	263	263	310	280	245	263	234
<b>PK-4 Subtotal</b>	<b>1,407</b>	<b>1,392</b>	<b>1,354</b>	<b>1,330</b>	<b>1,344</b>	<b>1,308</b>	<b>1,291</b>	<b>1,295</b>	<b>1,271</b>	<b>1,221</b>	<b>1,224</b>	<b>1,116</b>
5	260	285	291	272	288	255	264	255	315	292	256	255
6	302	260	287	294	276	287	261	282	263	318	304	249
<b>5-6 Grades Subtotal</b>	<b>562</b>	<b>545</b>	<b>578</b>	<b>566</b>	<b>564</b>	<b>542</b>	<b>525</b>	<b>537</b>	<b>578</b>	<b>610</b>	<b>560</b>	<b>504</b>
7	340	316	271	284	299	280	291	271	286	273	326	307
8	322	352	317	267	280	309	283	291	271	281	273	328
<b>7-8 Grades Subtotal</b>	<b>662</b>	<b>668</b>	<b>588</b>	<b>551</b>	<b>579</b>	<b>589</b>	<b>574</b>	<b>562</b>	<b>557</b>	<b>554</b>	<b>599</b>	<b>635</b>
9	373	367	376	325	300	305	322	297	319	286	302	297
10	355	360	352	364	325	290	309	319	290	320	293	307
11	369	338	337	329	342	312	286	305	326	288	332	288
12	339	371	331	339	332	346	318	293	304	321	286	331
<b>9-12 Grades Subtotal</b>	<b>1,436</b>	<b>1,436</b>	<b>1,396</b>	<b>1,357</b>	<b>1,299</b>	<b>1,253</b>	<b>1,235</b>	<b>1,214</b>	<b>1,239</b>	<b>1,215</b>	<b>1,213</b>	<b>1,223</b>
<b>PK-12 Total</b>	<b>4,067</b>	<b>4,041</b>	<b>3,916</b>	<b>3,804</b>	<b>3,786</b>	<b>3,692</b>	<b>3,625</b>	<b>3,608</b>	<b>3,645</b>	<b>3,600</b>	<b>3,596</b>	<b>3,478</b>

Source: Ohio Department of Education



# PROJECTED ENROLLMENT

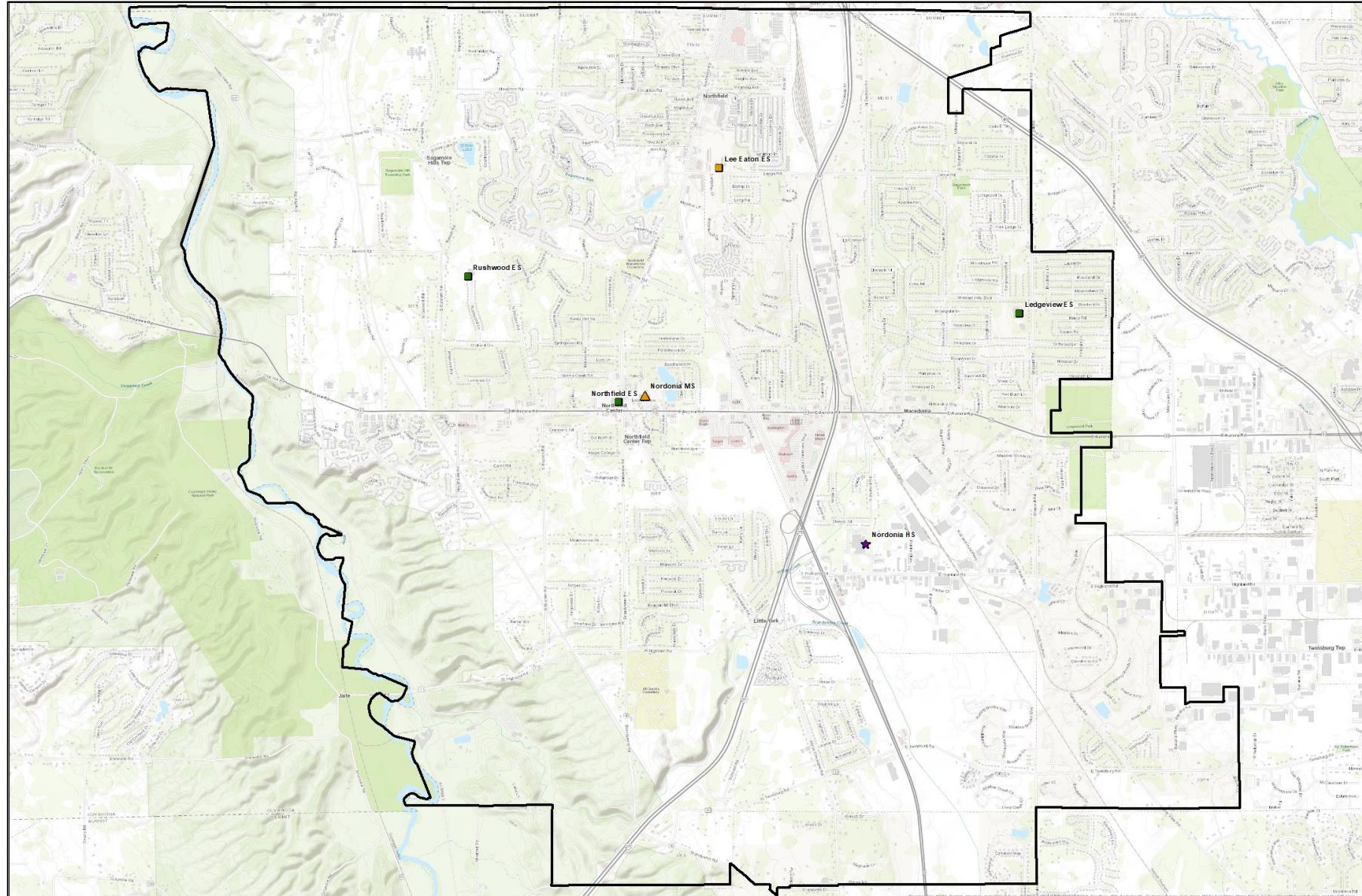


Nordonia Hills Projected Enrollments by School Year								
Grade	2022-23	2023-24	2024-25	2025-26	2026-27	2027-28	2028-29	2029-30
PK special needs	40	37	38	38	38	38	38	38
K	239	219	224	224	224	224	224	224
1	236	251	229	234	234	234	234	234
2	219	239	254	232	238	238	238	238
3	208	227	247	263	240	246	246	246
4	260	209	228	249	264	242	247	247
<b>PK-4 Subtotal</b>	<b>1,202</b>	<b>1,182</b>	<b>1,220</b>	<b>1,240</b>	<b>1,238</b>	<b>1,222</b>	<b>1,227</b>	<b>1,227</b>
5	277	263	212	231	252	267	245	250
6	254	285	270	217	237	259	275	251
<b>5-6 Grades Subtotal</b>	<b>531</b>	<b>548</b>	<b>482</b>	<b>448</b>	<b>489</b>	<b>526</b>	<b>520</b>	<b>501</b>
7	280	259	291	276	222	242	264	281
8	269	280	259	291	276	222	242	264
<b>7-8 Grades Subtotal</b>	<b>549</b>	<b>539</b>	<b>550</b>	<b>567</b>	<b>498</b>	<b>464</b>	<b>506</b>	<b>545</b>
9	332	287	299	277	311	295	237	259
10	349	332	288	299	277	311	295	237
11	217	258	246	213	221	205	230	218
12	226	218	260	248	214	223	206	232
<b>9-12 Grades Subtotal</b>	<b>1,124</b>	<b>1,095</b>	<b>1,093</b>	<b>1,037</b>	<b>1,023</b>	<b>1,034</b>	<b>968</b>	<b>946</b>
Career Tech Off-Site	113	121	129	118	111	109	111	115
<b>PK-12 Total</b>	<b>3,519</b>	<b>3,485</b>	<b>3,474</b>	<b>3,410</b>	<b>3,359</b>	<b>3,355</b>	<b>3,332</b>	<b>3,334</b>

Source: FutureThink



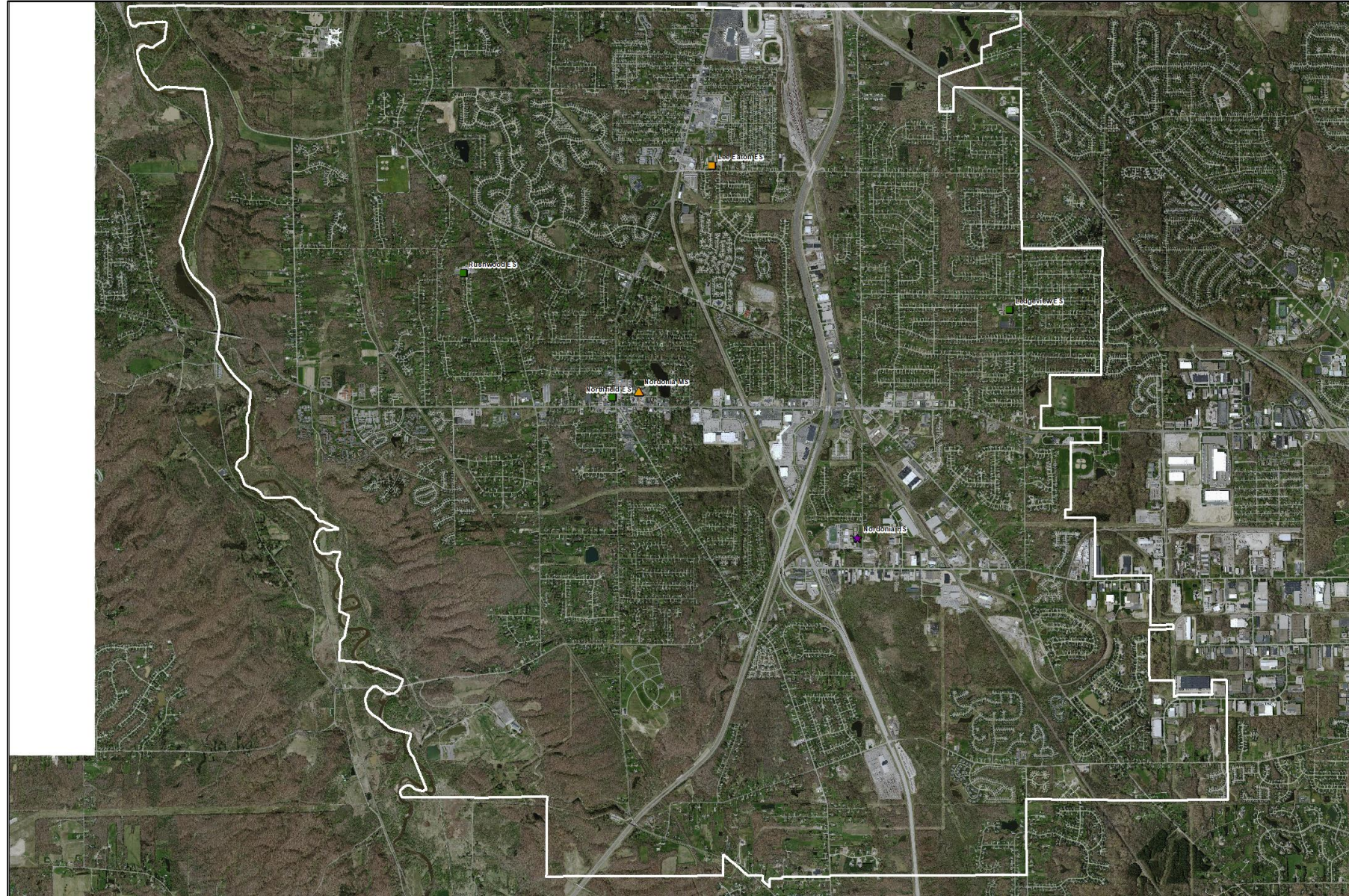
# DISTRICT MAP







# DISTRICT MAP







# ALL SITES



**Ledgeview ES**



**Lee Eaton ES**



**Rushwood ES**



**Nordonia HS / Transportation**



**Northfield ES**



**Nordonia MS**





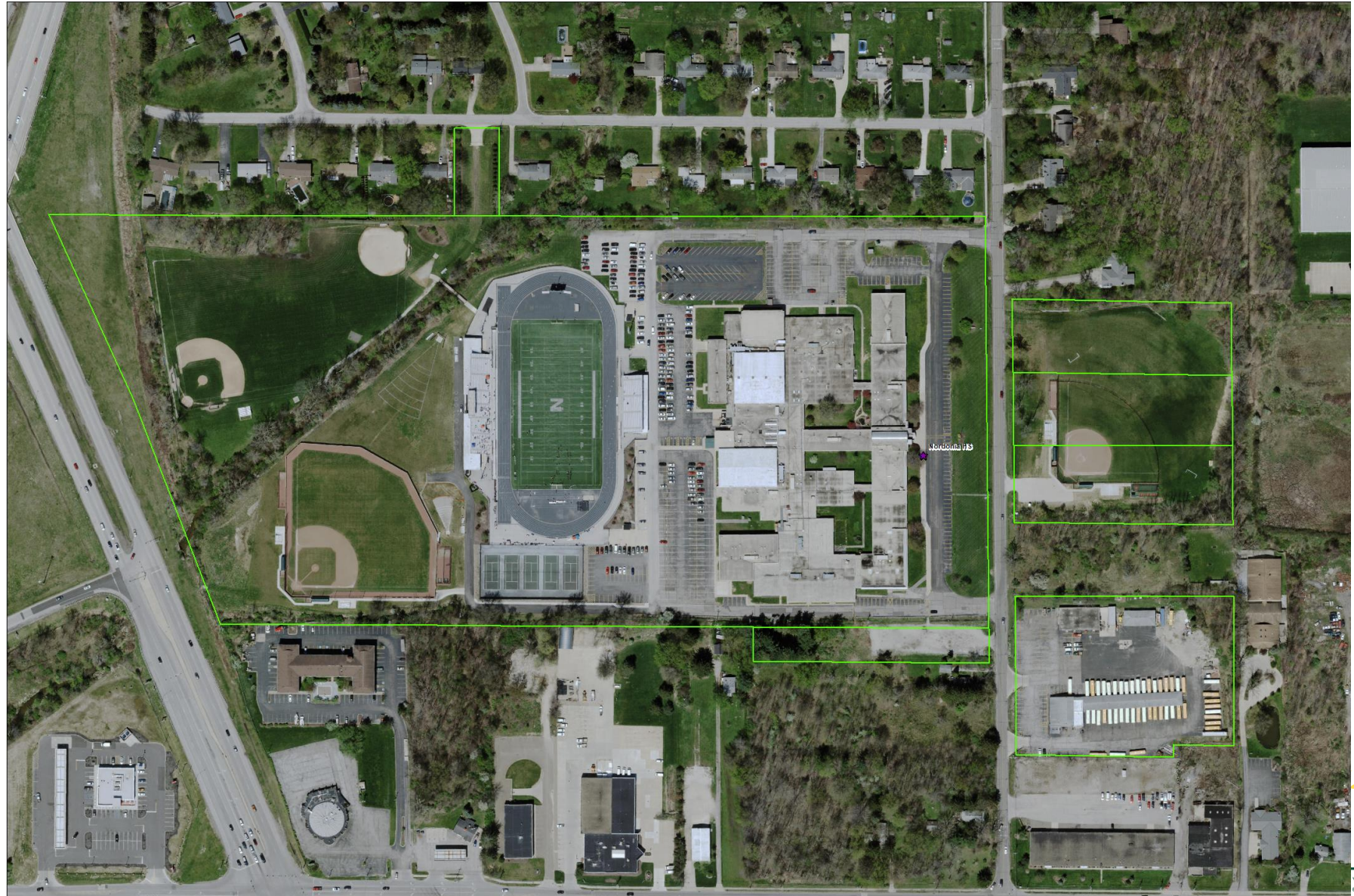


# NORDONIA HIGH SCHOOL



**High School Site: 41.2 acres**  
**Softball Site: 5.6 acres**  
**Transportation Site: 3.9 acres**

**Grades: 9-12**







# NORDONIA HIGH SCHOOL







# NORDONIA MIDDLE SCHOOL



**Site: 11 acres**  
**Grades: 7-8**







# NORDONIA MIDDLE SCHOOL





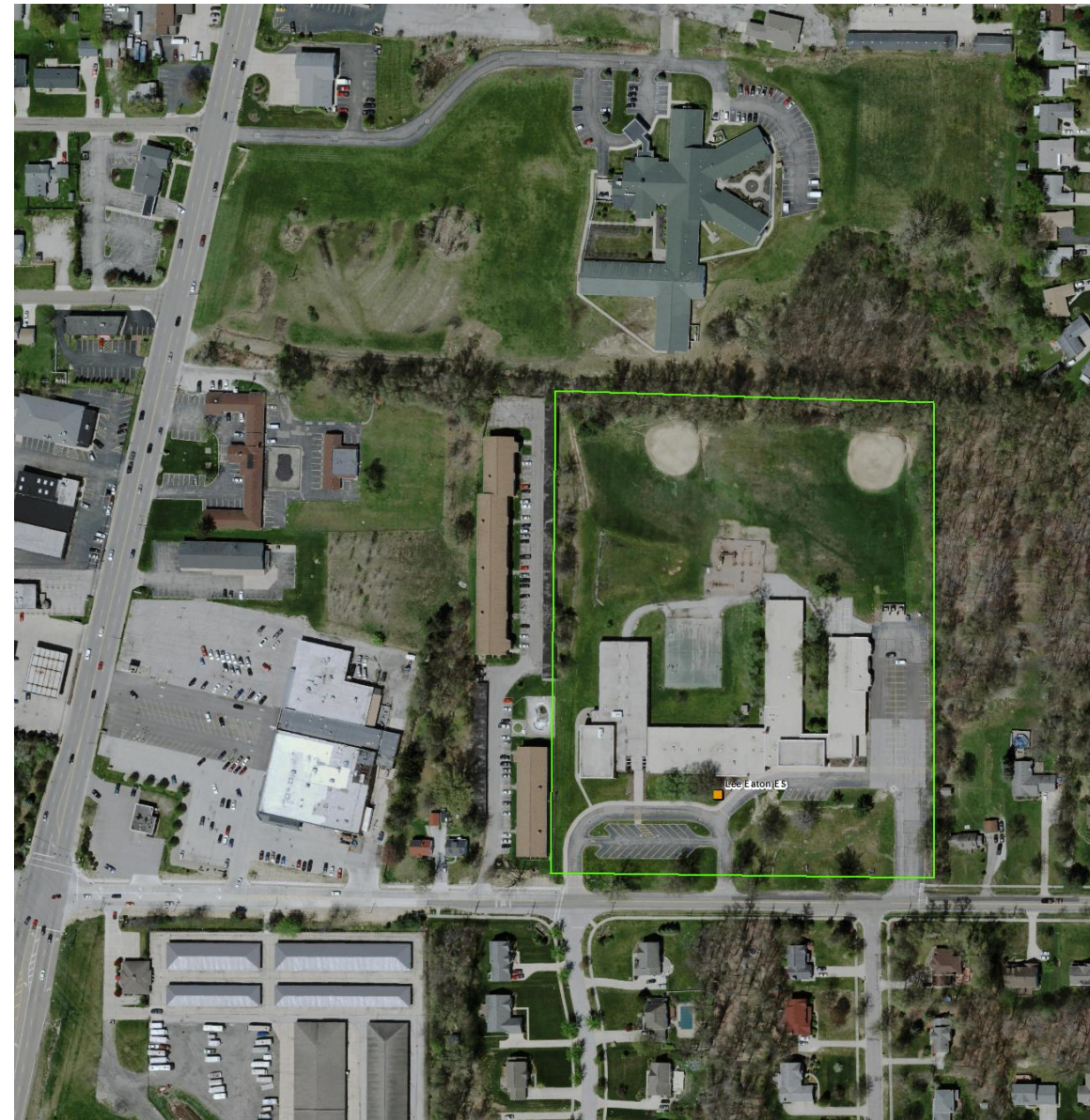


# LEE EATON ELEMENTARY SCHOOL



**Site:** 11.5 acres

**Grades:** 5-6







# LEE EATON ELEMENTARY SCHOOL







# NORTHFIELD ELEMENTARY SCHOOL



**Site:** 6.74 acres

**Grades:** K-4







# NORTHFIELD ELEMENTARY SCHOOL







# RUSHWOOD ELEMENTARY SCHOOL



**Site:** 21.9 acres  
**Grades:** K-4







# RUSHWOOD ELEMENTARY SCHOOL







# LEDGEVIEW ELEMENTARY SCHOOL



## Ledgeview ES

**Site:** 11.6 acres

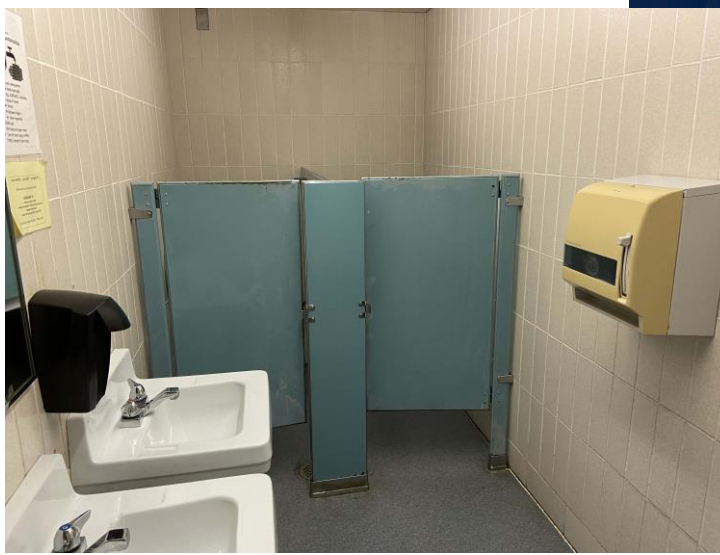
**Grades:** K-4







# LEDGEVIEW ELEMENTARY SCHOOL







# PURPOSE OF TONIGHT'S MEETING



- High level discussion around educational facilities and program concepts
- Your feedback on these concepts will define the educational framework parameters that the committee will use to develop options
- Individual Survey
- Small Group Discussion
- Gallery Walk





# TERMS & DEFINITIONS



**Capacity:** The number of students a school building can hold.

**Class size:** The number of students within a classroom, completely independent of school size.

**Enrollment:** The number of students attending a particular school or district.

**Historical Enrollment:** The number of students attending a particular school or district in the past. For example, if we say the historical enrollment of Washington Elementary School in 2010-2011 was 543 students, we are indicating that the number of students attending that school in that year in the past was 543 students.

**OFCC (Ohio Facilities Construction Commission):** State Agency that partners with school districts to fund capital improvements.

**Program Requirements:** What the facility needs to effectively deliver the curriculum.

**Programs:** The curriculum that is taught / delivered.

**Projected Enrollment:** Student attendance forecast.





# TERMS & DEFINITIONS



**Renovation:** Modification of the interior of a facility. Minor renovation includes upgrades to furniture, fixtures, and equipment (FF&E) and potentially a single system (electrical, plumbing, etc.). Moderate renovation includes upgrades to FF&E and more than one system. Major renovation includes gutting the interior of the facility, upgrades to FF&E and most if not all systems.

**Small School:** School with a relatively low student enrollment (number of students in a facility), completely independent of class size.

**Shared Public Community Space:** Spaces within a facility or on a site that are used by the community before, during, and/or after the school day such as gymnasiums, tracks, and library/media centers. Typically there is a joint use agreement with partnering agencies.

**School Site:** The acreage on which a school facility and its surrounding exterior features sit such as parking lots, sidewalks, playgrounds, fields, play courts, etc.

**STEM / STEAM:** Thematic curriculums – Science, Technology, Engineering, Math / Science, Technology, Engineering, Arts, Math.

**Student Services:** support services that students receive above standard curriculum (e.g. counselors, psychologists, etc.)

**Utilization:** Enrollment divided by capacity.





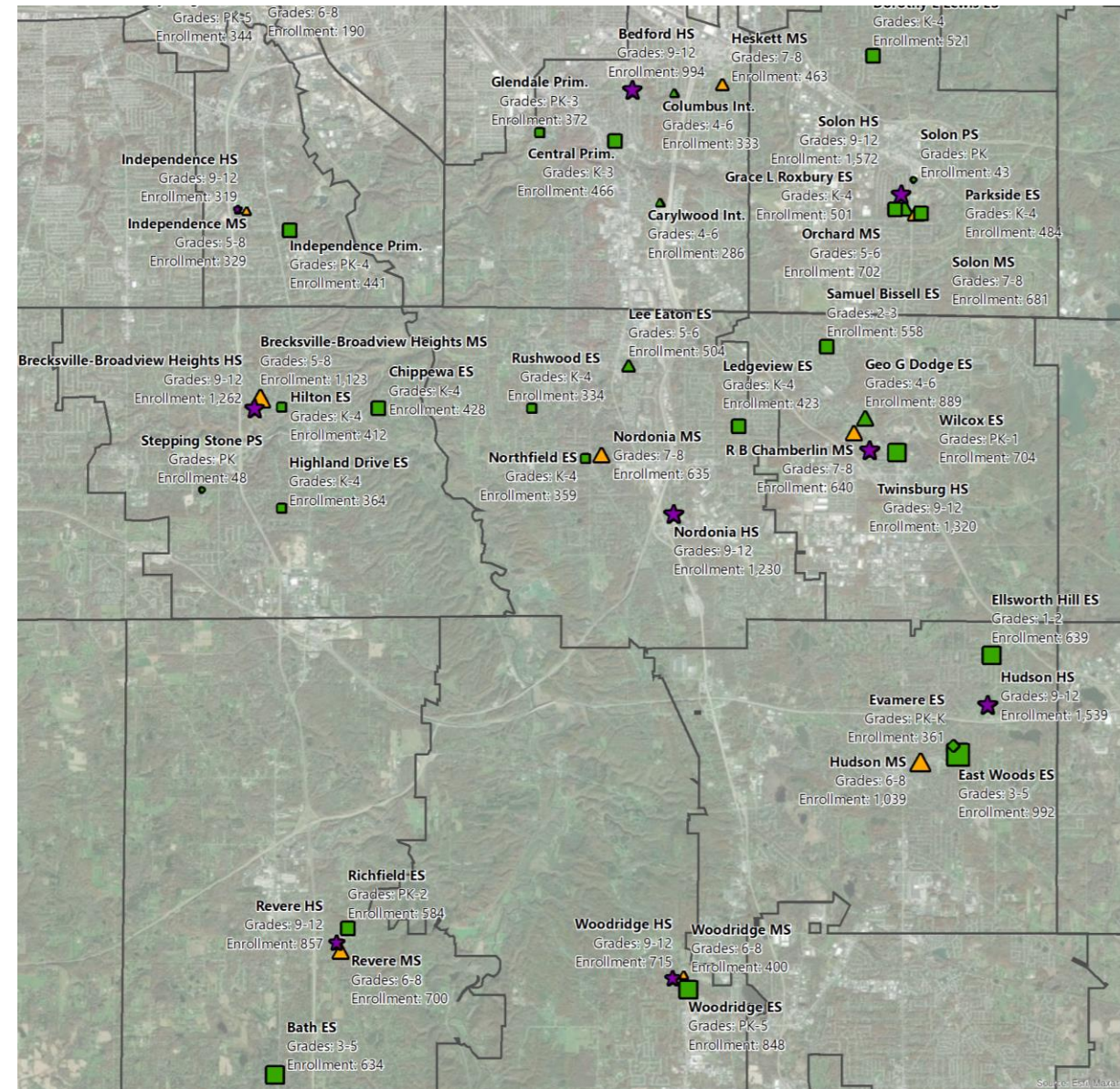


# MAP OF NEIGHBORING SCHOOL DISTRICTS



District	Schools	Grades Served	Enrollment	Students / Grade
<b>Bedford City Schools:</b> PK-3, 4-6, 7-8, 9-12 2,914 Students	Central Primary School	K-3	466	117
	Glendale Primary School	PK-3	372	88
	Carylwood Intermediate School	4-6	286	95
	Columbus Intermediate School	4-6	333	111
	Heskett Middle School	7-8	463	232
	Bedford High School	9-12	994	249
<b>Brecksville-Broadview Heights City Schools:</b> PK, K-4, 5-8, 9-12 3,637 Students	Stepping Stone Preschool	PK	48	48
	Chippewa Elementary School	K-4	428	86
	Highland Drive Elementary School	K-4	364	73
	Hilton Elementary School	K-4	412	82
	Brecksville-Broadview Heights Middle School	5-8	1,123	281
	Brecksville-Broadview Heights High School	9-12	1,262	316
<b>Hudson City Schools:</b> PK-K, 1-2, 3-5, 6-8, 9-12 4,570 Students	Evamere Elementary School	PK-K	361	289
	Ellsworth Hill Elementary School	1-2	639	320
	East Woods Elementary School	3-5	992	331
	Hudson Middle School	6-8	1,039	346
	Hudson High School	9-12	1,539	385
<b>Independence Local Schools:</b> PK-4, 5-8, 9-12 1,089 Students	Independence Primary School	PK-4	441	84
	Independence Middle School	5-8	329	82
	Independence High School	9-12	319	80
<b>Nordonia Hills City Schools</b> K-4, 5-6, 7-8, 9-12 3,485 Students	Ledgeview Elementary School	K-4	423	85
	Northfield Elementary School	K-4	359	72
	Rushwood Elementary School	K-4	334	67
	Lee Eaton Elementary School	5-6	504	252
	Nordonia Middle School	7-8	635	318
<b>Revere Local Schools</b> PK-2, 3-5, 6-8, 9-12 2,775 Students	Nordonia High School	9-12	1,230	308
	Richfield Elementary School	PK-2	584	180
	Bath Elementary School	3-5	634	211
	Revere Middle School	6-8	700	233
	Revere High School	9-12	857	214
<b>Solon City Schools</b> PK, K-4, 5-6, 7-8, 9-12 4,504 Students	Solon Preschool	PK	43	43
	Dorothy E Lewis Elementary School	K-4	521	104
	Grace L Roxbury Elementary School	K-4	501	100
	Parkside Elementary School	K-4	484	97
	Orchard Middle School	5-6	702	351
	Solon Middle School	7-8	681	341
<b>Twinsburg City Schools</b> PK-1, 2-3, 4-6, 7-8, 9-12 4,111 Students	Solon High School	9-12	1,572	393
	Wilcox Elementary School	PK-1	704	313
	Samuel Bissell Elementary School	2-3	558	279
	Geo G Dodge Elementary School	4-6	889	296
	R B Chamberlin Middle School	7-8	640	320
<b>Woodridge Local Schools</b> PK-5, 6-8, 9-12 1,963 Students	Twinsburg High School	9-12	1,320	330
	Woodridge Elementary School	PK-5	848	136
	Woodridge Middle School	6-8	400	133
	Woodridge High School	9-12	715	179

Source (2020): <https://education.ohio.gov/Topics/Data/Frequently-Requested-Data/Enrollment-Data>







# SCHOOL SIZE OBSERVATIONS



- There are 24 elementary schools in Nordonia Hills and neighboring districts. Their enrollments range from 286 students to 992 students
- The average enrollment of these 24 elementary schools is 527
- All the Nordonia Hills elementary schools have a lower enrollment than the average of 527
- The average enrollment of the Nordonia Hills elementary schools is 405
- Rushwood & Northfield elementary schools are the 3<sup>rd</sup> and 4<sup>th</sup> smallest out of the 24 elementary schools
- Twinsburg has higher enrollment than Nordonia Hills and each grade level is only in one facility. Twinsburg has one boundary for the entire district (Single grade level buildings)







# SCHOOL SIZE CONSIDERATIONS



- There is no “best practice” as it relates to school size
- School size is completely independent of class size
- *Program Offerings:* As school size increases so does the ability to offer cost effective additional educational opportunities
- *Traffic & walkability:* As facility size increases the site elements such as parking, sidewalks, fields, etc. also need to increase. The potential for students to be bussed increases with a larger school. (School outside of neighborhood)
- *Community:* Small neighborhood schools tend to have a greater sense of belonging for most families and students. Large schools provide more diversity for students and families with which to find a connection.



# GRADE CONFIGURATION CONSIDERATIONS



- Surrounding school districts to which Nordonia Hills was compared are relatively the same size geographically
- There is no “best practice” grade configuration
- Transitions: some grade configurations have more transitions than others but not all transitions have the same impact
- Vertical curriculum alignment: access to services at more than one grade level
- Sibling pick up & drop off: smaller grade spans have a greater possibility of siblings being in different buildings





# INDIVIUAL SURVEY



Questions #1 to #5 are Demographics:

Age, Affiliation with District, School Affiliation, Community of Residence, etc.



[https://www.surveymonkey.com/r/Nordonia Hills Ed Framework](https://www.surveymonkey.com/r/Nordonia_Hills_Ed_Framework)



# SURVEY



6. What is your perception of the overall physical condition of the District facilities and site elements (fields, parking, etc.)? (Please only provide responses on those facilities you have been in within the last 5 years)

	Good	Needs minor improvement(s)	Needs major renovations or replaced	Don't know / No opinion / Haven't been in this facility within the last 5 years
Ledgeview Elementary	<input type="radio"/>	<input type="radio"/>	<input type="radio"/>	<input type="radio"/>
Northfield Elementary (excluding BOE offices)	<input type="radio"/>	<input type="radio"/>	<input type="radio"/>	<input type="radio"/>
Rushwood Elementary	<input type="radio"/>	<input type="radio"/>	<input type="radio"/>	<input type="radio"/>
Lee Eaton Elementary	<input type="radio"/>	<input type="radio"/>	<input type="radio"/>	<input type="radio"/>
Nordonia Middle School	<input type="radio"/>	<input type="radio"/>	<input type="radio"/>	<input type="radio"/>
Nordonia High School	<input type="radio"/>	<input type="radio"/>	<input type="radio"/>	<input type="radio"/>
Board of Education Office @ Northfield Elementary	<input type="radio"/>	<input type="radio"/>	<input type="radio"/>	<input type="radio"/>

If you answered "needs minor improvement or major renovations" what do you believe can be done to improve or renovate those facilities?





# SURVEY



7. If it is determined that a facility has reached the end of its useful life (poor condition and/or not suitable to meet current/future educational needs), which of the following factors should be considered in deciding whether or not the facility should be renovated or demolished and replaced?

- ☐ Historical, Architectural or Cultural Significance
- ☐ Physical condition of school
- ☐ Safety & security of school
- ☐ Overall cost of the project
- ☐ The school building does not have the right spaces for the current programs being taught
- ☐ Other (please specify)



# SURVEY



8. Which, if any, of the facilities are architecturally, historically, or culturally significant to the point that they should be preserved regardless of cost?

- ☐ None
- ☐ Ledgeview ES
- ☐ Northfield ES
- ☐ Rushwood ES
- ☐ Lee Eaton ES
- ☐ Nordonia MS
- ☐ Nordonia HS

If any facilities were selected, please explain your selection(s).

9. Do you think it is more cost effective to:

- ☐ Renovate buildings that have reached the end of their useful life
- ☐ Replace buildings that have reached the end of their useful life
- ☐ It depends (please specify)





# SURVEY



10. Small schools (less than 350 students) are costly to operate and potentially provide fewer programs while large schools (500 or more students) are less costly to operate and provide more educational opportunities due to economies of scale. (Size of school is completely independent from class size) Please indicate your preference using the slider below.

Small Schools (less than 350  
students)

Large Schools (500 or more  
students)

***Note: Slider will be centered on the electronic version of the survey***



# SURVEY



11. What do you feel is the ideal grade configuration for the District?

- ☐ K-4, 5-6, 7-8, 9-12 (Current)
- ☐ K-2, 3-5, 6-8, 9-12
- ☐ K-3, 4-8, 9-12
- ☐ K-4, 5-8, 9-12
- ☐ K-5, 6-8, 9-12
- ☐ Other (please specify)

12. Based on your selected grade configuration above, how you think schools should be configured in the District? How many facilities for each grade configuration? (For Example: Three K-4, One 5-6, One 7-8, One 9-12)





# SURVEY



13. Do you believe updated/newer school facilities impact the economic development of the region?

- ☐ Yes ☐ No ☐ Don't Know/No Opinion

14. Did the School District's reputation impact your residential decision?

- ☐ Yes ☐ No



# SURVEY



15. Please indicate the extent to which the following factors may have influenced your decision to live in the School District.

	Important consideration	No Opinion	Not a consideration
Academic Opportunities	<input type="radio"/>	<input type="radio"/>	<input type="radio"/>
Alumni / family history	<input type="radio"/>	<input type="radio"/>	<input type="radio"/>
Before/After school care programs	<input type="radio"/>	<input type="radio"/>	<input type="radio"/>
Distance of schools from work/residence	<input type="radio"/>	<input type="radio"/>	<input type="radio"/>
Extra-curricular Activities	<input type="radio"/>	<input type="radio"/>	<input type="radio"/>
Overall Reputation	<input type="radio"/>	<input type="radio"/>	<input type="radio"/>
Physical condition of the schools	<input type="radio"/>	<input type="radio"/>	<input type="radio"/>
Quality of Academic Programs (Special Education, STEM, test scores, fine arts, advanced placement, dual credit, etc.)	<input type="radio"/>	<input type="radio"/>	<input type="radio"/>
College Scholarships	<input type="radio"/>	<input type="radio"/>	<input type="radio"/>
Skilled Trades	<input type="radio"/>	<input type="radio"/>	<input type="radio"/>
Employment Percentage Rate	<input type="radio"/>	<input type="radio"/>	<input type="radio"/>
Quality of Sports/Athletic Programs/Activities/Facilities	<input type="radio"/>	<input type="radio"/>	<input type="radio"/>
Safety	<input type="radio"/>	<input type="radio"/>	<input type="radio"/>
Diversity	<input type="radio"/>	<input type="radio"/>	<input type="radio"/>

Other (please specify)





# SURVEY



16. What is your level of interest in having spaces available for shared public community use?

	Interested	No Opinion / Don't Know	Not Interested
Additional Gymnasium Space / Indoor Walking Track	<input type="radio"/>	<input type="radio"/>	<input type="radio"/>
Auditorium / Theater for Performances & Presentations	<input type="radio"/>	<input type="radio"/>	<input type="radio"/>
Library / Media Center	<input type="radio"/>	<input type="radio"/>	<input type="radio"/>
Senior Center	<input type="radio"/>	<input type="radio"/>	<input type="radio"/>
Playground / Splash Pad	<input type="radio"/>	<input type="radio"/>	<input type="radio"/>

Other (please specify)



# SURVEY



17. The District currently operates three (3) tiers of bus routes resulting in multiple start times at the elementary level (Ledgeview, Northfield, and Rushwood start at 9:00am while Lee Eaton starts at 7:25).

Tier 1: High School 7:20am to 2:11pm *and* Lee Eaton 7:25am to 2:10pm

Tier 2: Middle School *and* St. Barnabas School 8:00am to 2:50pm

Tier 3: Ledgeview ES, Northfield ES, and Rushwood ES 9:00am to 3:30pm

Please provide your level of agreement with the following concepts.

	Agree	Neutral	Disagree
No changes are needed, start times are fine as they are.	<input type="radio"/>	<input type="radio"/>	<input type="radio"/>
Explore facility options (such as different different grade configurations), that can reduce the number of start times.	<input type="radio"/>	<input type="radio"/>	<input type="radio"/>
Contract more buses (increasing operational costs) to expand the transportation capacity which can reduce the number of start times.	<input type="radio"/>	<input type="radio"/>	<input type="radio"/>





# SURVEY



18. As the steering committee is formulating facility options, is there anything else you would like us to consider?



# PROJECT WEBSITE



<https://coopstratprojects.com/nordoniahillscitysd/>





***THANK YOU!***

***Next Meeting:***

Community Dialogue #2:  
Wednesday January 12  
High School Cafeteria  
6:00 pm

