



FACILITY MASTER PLAN:

STEERING COMMITTEE #1





AGENDA



- I. Welcome & Introductions
- II. Process & Timeline
- III. Role of Committee
- IV. Futures Conference Summary & Results
- V. Background Information
- VI. Project Website: <https://coopstratprojects.com/nordoniahillscitysd/>
- VII. Condition Assessments - Sol Harris Day
- VIII. Educational Framework Community Dialogue
- IX. Questions & Answers
- X. Wrap Up, Next Steps, Adjourn
- XI. Next Meeting – October 20, 2021 at Northfield Elementary School to discuss Educational Framework Questions



PROCESS OVERVIEW





TIMELINE



Task / Activity	2021												2022							
	April	May	June	July	August	September	October	November	December	January	February	March	April	May	June	July	August	September	October	November
Kickoff Meeting																				
Assessment Validation																				
Background Data Collection																				
Futures Conference																				
Steering Committee																				
Educational Framework																				
Options Development																				
Community Feedback on Options																				
Recommendation Development																				
Board Meetings																				
Controlling Board																				
November Ballot Deadline																				

Community Meeting Schedule:

- **Educational Futures Conference:** September 22, 6:00 pm – 8:00 pm @ NHS Cafeteria
- **Community Dialogue #1/ Educational Framework:** November 10 , 6:00 pm – 8:00 pm @ NHS Cafeteria
- **Community Dialogue #2/ Facility Options:** January 12 , 6:00 pm – 8:00 pm @ NHS Cafeteria
- **Board Discussion and Action:** Dates TBD, March 2022



STEERING COMMITTEE SCHEDULE



- Steering Committee #1: October 6 Nordonia Middle School Media Center
- Steering Committee #2: October 20 Northfield Elementary Cafeteria
- **Community Dialogue #1/ Educational Framework: November 10 Lee Eaton Elementary Cafeteria**
- Steering Committee #3: December 1 Ledgeview Elementary Cafeteria
- Steering Committee #4: December 15 Rushwood Elementary Cafeteria
- **Community Dialogue #2/ Facility Options: January 12 Nordonia High School Cafeteria**
- Steering Committee #5: February 2 Northfield Elementary Cafeteria
- Final Board Presentation: March 2022

All meetings will be held on Wednesdays from 6:00 pm – 8:00 pm



PROJECT WEBSITE



<https://coopstratprojects.com/nordoniahillscitysd/>

- Agendas
- Presentations
- Questionnaires
- Background Information
- Schedule

The screenshot shows the homepage of the Nordia Hills City School District's Master Plan Website. At the top, there is a header with the school district logo on the left and the Cooperative Strategies logo on the right. Below the header, a navigation menu is visible on the left side, containing links for 'HOME', 'Home', 'Process', and 'Resources'. The main content area on the right features a welcome message: 'Welcome to the Nordia Hills City School District's Master Plan Website. This space will serve as the resource for all information related to the process. This site will be updated regularly throughout the process. Please, check back often for new information.' Below this message is a section titled 'Facility Master Plan Overview' which includes a large photograph of a diverse group of smiling children.



STEERING | ADVISORY COMMITTEE



Role of the Committee

- Keep an objective view and consider the needs of ALL STUDENTS.
- Develop facility options and recommendations in coordination with consultants and District Staff
- Inform the community about the process
- Attend 5-6 two-hour meetings

Typical Committee Membership

- Parents of current students
- Parents of former students
- Senior citizens
- City / Municipal representatives
- Past facility committee members
- Civic organization representatives
- District staff as a resource

Role of the Community

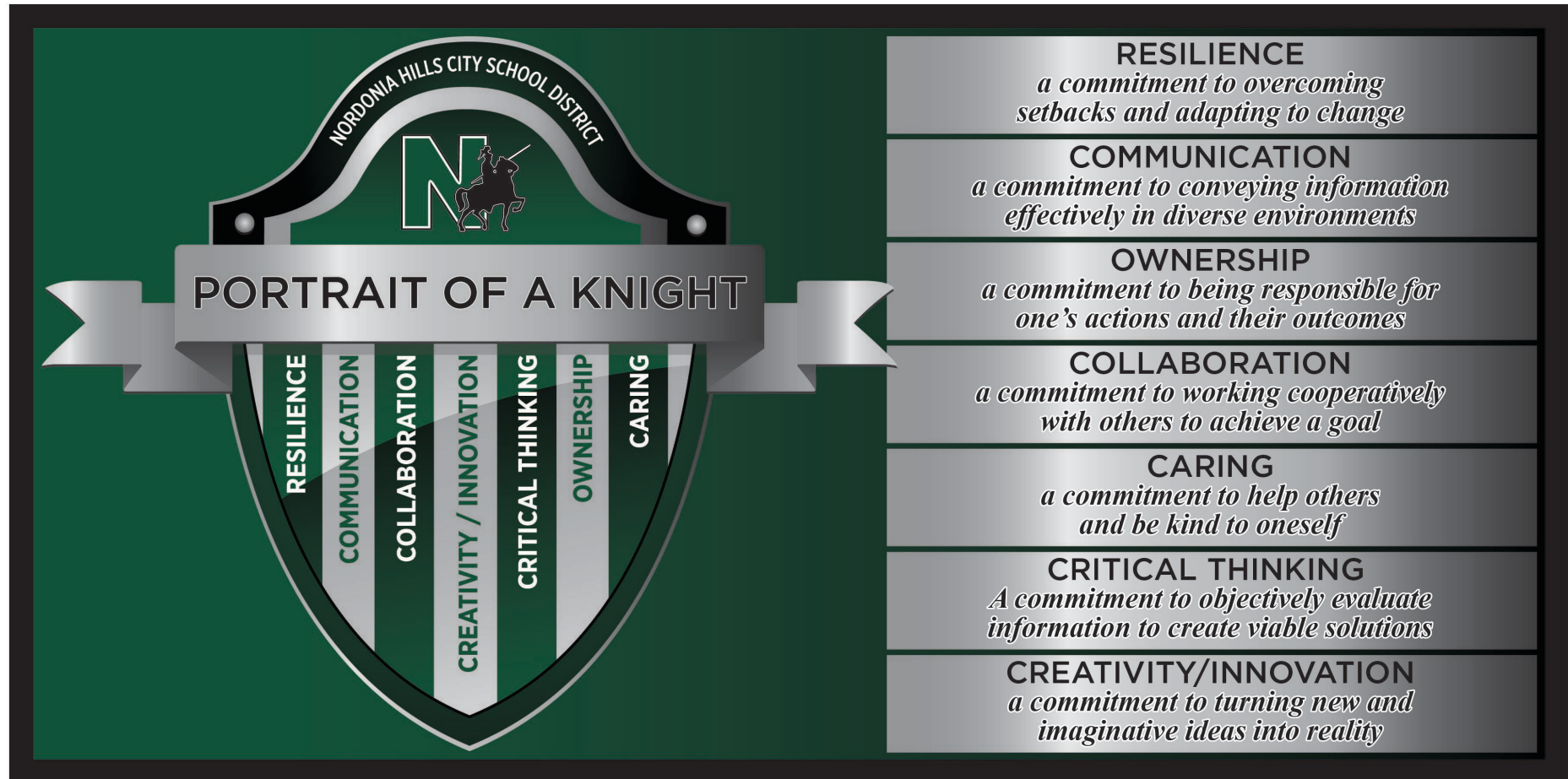
- Provide feedback on concepts and options presented by the District and committee



PORTRAIT OF A KNIGHT



- Developed through a community process
- Adopted over a year ago
- Board approved



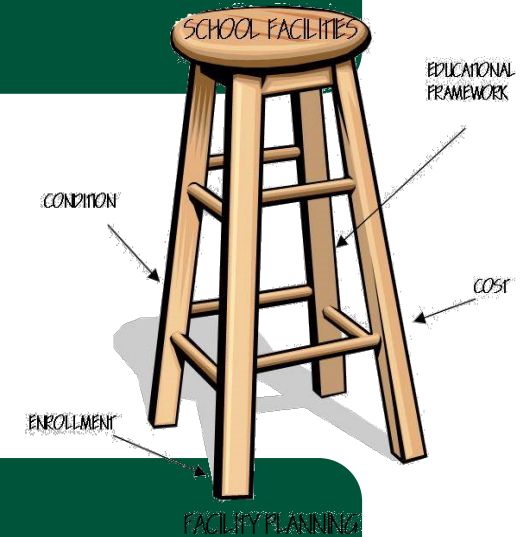


FACILITIES MASTER PLAN



Facility Master Plan aligns facilities to the Portrait of a Knight

- Educational Framework
- Condition & Adequacy Assessments
- Enrollment vs. Capacity
- Cost to correct deficiencies & provide equitable facilities



Validating Needs – OFCC Assessment Data

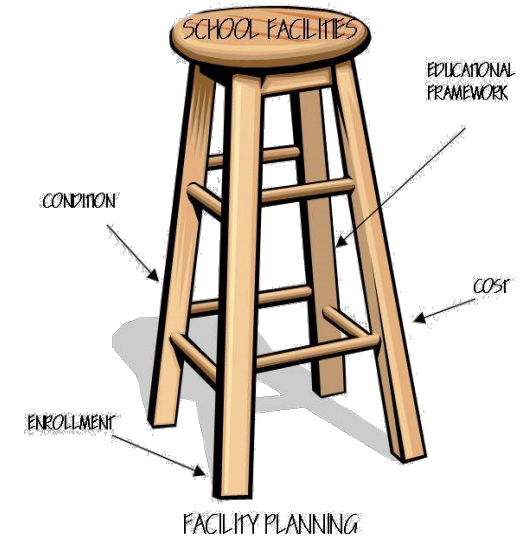


WHAT DOES A FACILITY MASTER PLAN DO?



Examples of Facility Master Plan Actions:

- Construct new facilities or add on to existing facilities
- Renovate / Modernize existing facilities
- Repurpose or consolidate facilities
- Program or grade configuration change





FUTURES CONFERENCE SUMMARY



- Wednesday, September 22, 2021
- Approximately 75 attendees, 19 online questionnaires
- Online Questionnaire for a week following in person meeting
- 4 Questions:
 1. *What qualities should the students of 2050 have?*
 2. *What are the careers of 2050?*
 3. *What does the school of 2050 look like?*
 4. *How do the facilities support or hinder "Portrait of a Knight"?*



FUTURES CONFERENCE SUMMARY



- 1) Tech Savvy
Problem Solvers
Quick Thinkers
Resilient
Logical
Career Ready
 - 2) Space
Health Care
Environment
Infrastructure
 - 3) Open Space
Screens
Environmentally friendly
Hand free
Collaborative areas
 - 4) No collaborative areas - communication
No bright colors - creativity
- Social Skills
Flexible
Independent
Motivated
- Trades
Technology
Finance
Entrepreneurship
- Safe
Bulky Proof
- NEW = Bright
Modern
Open spaces
- Gold

- 1. - FLEXIBLE W/ TECHNOLOGY
- HARD WORKING
- BEING PREPARED/LIFE SKILLS
- 2. - ARTIFICIAL INTELLIGENCE
- TRADES (BUILDING/MECHANICAL)
- HEALTH CARE
- GREEN ENERGY/ENVIRONMENTAL
- 3. - COLLABORATIVE SPACES
- LEARNING SPACE
- ENERGY EFFICIENCY/INDEPENDENCE
- FRESH AIR
- WELL LIT/NATURAL LIGHT
- 4. - THE SCHOOL ENVIRONMENT FOSTERS THE OUTCOME OF THE STUDENT
- MAKE THE STUDENTS EXCITED ABOUT COMING TO SCHOOL
- BEING PROUD OF WHERE YOU CAME FROM

- 1. Qualities of Student in 2050
• innovative
• self-starters
• motivated
• global
• confident
 - 2. Careers of 2050
• IT
• Robotics
• Renewable energy/eco
• medical/health
• trades
 - 3. Schools of 2050
• remote or hybrid option
• teaching life skills
• choose career path earlier on
 - 4. Facilities' support "Portrait of a Knight"
• Buildings
• De-centralization creates opportunities
• Space is designed very traditionally. Opening up spaces could positively impact collaboration = creativity
• Lack of comfortable temps can negatively impact the learning environment
• Kids need to carry less materials
- work/life balance
• teach skills that can be used on work

- 1. RESPONSIBLE
RESPECTFUL
MOTIVATED
ADAPTABILITY
CONNECTIVITY
IN-PERSON COMMUNICATION
COMMUNITY MINDED
- 2. TECHNOLOGY
ROBOTICS A.I.
MEDICAL FIELD
EDUCATORS
FIRST RESPONDERS
PUBLIC SERVANTS
- 3. OPEN SPACES
STATE OF THE ART TECHNOLOGY
VERSATILITY OF SPACE WE HAVE
"LESS INDUSTRIAL"
- 4. PRIDE & OWNERSHIP
IN THE SCHOOL
BEING A KNIGHT IS COOL!
IT'S TIME TO PLAN FOR THE FUTURE
NORWICH BAND IS THE BEST!

- 1 Qualities
Character
- Resilient (work ethic)
- Learns thru experience
- Integrity
 - 2 Careers
- Tech (crypto, programming)
- Trades (make equitable)
 - 3 Schools like
- Hands on/trades
- Open + Closed Spaces (different learning space)
- Physical Wellness
- How to Adult (finance)
 - 4 Facilities
support or hinder
- \$ in facilities
- Campus/comm
learning
- K-12 same bldg
- Older kids teach/model to younger
- OPEN = 10
LOUD

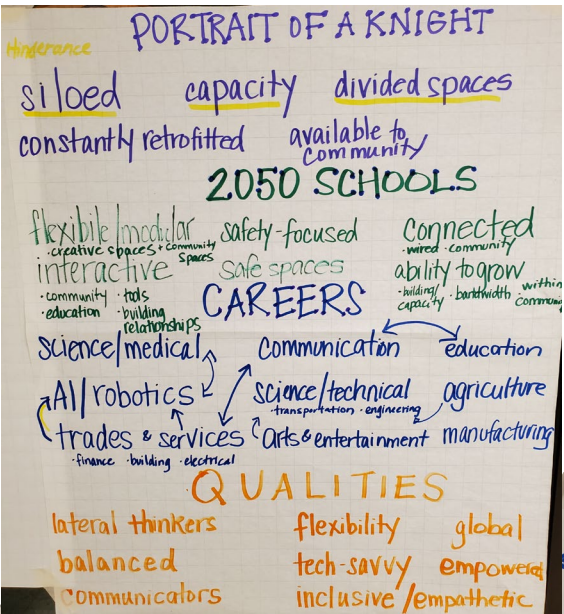
- 2050
- 1. Resilient, adaptable, critical thinking, independent, able to collaborate, empathetic + compassionate, hard-working, self-control, big picture vision
- 2. Careers: Technology, medical fields + healthcare
Working as a team, no physical workplace
service industries, change in careers a few times, more researching careers
- 3. Adaptable, inviting, flexible areas, wheels, energy efficient, outdoor areas
room to grow - but to go w/enrollment
technology - adaptive, community gathering place
- 4. Safety - conditions - physical age
hinders learning - lack of innovation
want our students proud of their school



FUTURES CONFERENCE SUMMARY



1. Empathy Curiosity
Teamwork / Collaboration
Ambitious
2. Medical, Ecology, Communication
Engineering, Education, Trades
Technology
3. Schools support various
learning styles / modes.
Blended learning,
Social / Emotion



- Qualities**
- Independence
 - Critical Thinking
 - Social Interaction
 - Self-Discipline
 - Respect
 - Adaptability
 - Adversity-Overcoming
 - Open-Minded
 - Integrity
- Careers**
- IT
 - Blue Collar Trades
 - Welding
 - Construction
 - Coding
 - Software Engineering
 - Cryptocurrency
 - Mechanic
 - Health care industry
 - Manufacturing
- 2050 School**
- Modular
 - Flexible
 - Efficient
 - Hybrid
 - Security
 - "Game IT"
- Portrait**
- More Space Needed
 - Less Student-teacher ratio
 - Security
 - Spaces/Places for Social Interaction

① Collaboration, Global Impact, Multitasking, Multitasking, Flexible

② Tech, mental health, medicine, Social Interaction, Governance, Economics

③ Multiple interactions open spaces adaptable, student guide

④ Mistake testing, space for innovation, Arts, Athletics

Outdoor & Indoor classrooms, changing spaces

Outside of the classroom, interaction is here

Provides opportunities to learn, because of the way that

School of 2050

Diverse & Interchangeable

Natural Light / Air Flow

Community

Adaptability

Security

campus space

flexible in more

limited calculation

open prep temp

How do the facilities support

the future of the school?

the future of the school?

the future of the school?

CAREERS OF 2050

Technology to meet

Health, Human Services

Computer Science, Business

Professional careers

Traditional jobs

- ① Adaptable, creative, multi-taskers,
critical thinkers, tech savvy.
- ② Tech, AI, Trades, medical,
resilient, global-minded
engineers, humanitarians
- ③ Environmentally-minded,
less structure-more options,
open spaces, solar, natural
light, less industrial, more
accommodating
- ④ Facilities-conditions, safety,
not enough parking, lacks
flexibility, wasted space, closed
off, no A/C

3. Less Formal, Career-centered, Flexible Schedules
 4. Hinder: Conditions of bldg hinder critical thinking - distracting
Some do not have common areas - hinder creativity
- Support: Conditions fosters resiliency



FUTURES CONFERENCE RESULTS

*What
qualities
should the
students of
2050 have?*





FUTURES CONFERENCE RESULTS

*What are the
careers of
2050?*





FUTURES CONFERENCE RESULTS

*What does the
school of 2050
look like?*





FUTURES CONFERENCE RESULTS

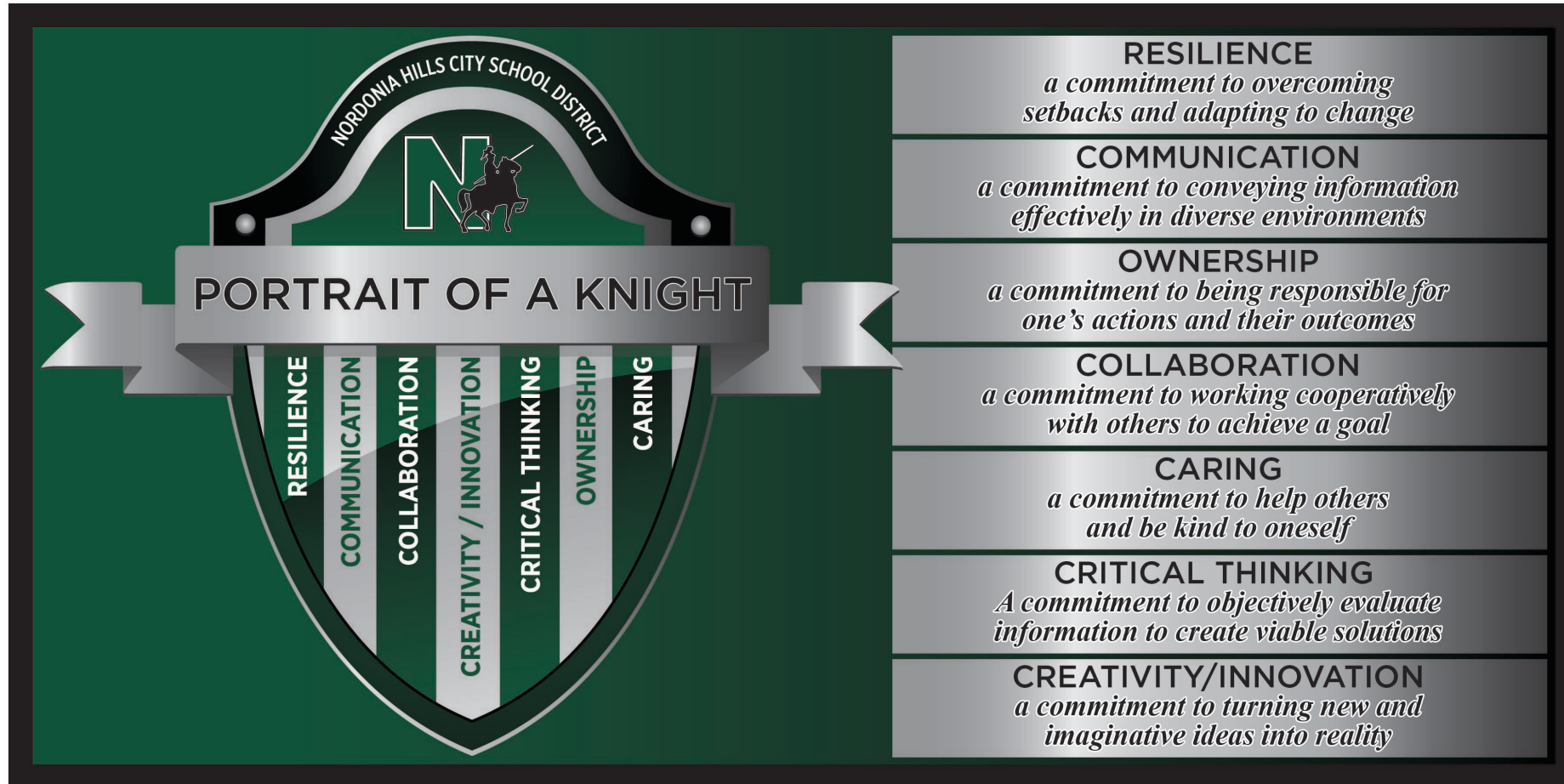
*How do the
facilities support
or hinder*

*“Portrait of a
Knight”?*





BACKGROUND DATA





HISTORICAL ENROLLMENT



Nordonia Hills Historical Enrollments by School Year												
Grade	2010-11	2011-12	2012-13	2013-14	2014-15	2015-16	2016-17	2017-18	2018-19	2019-20	2020-21	2021-22
PK	54	63	48	35	50	-	-	-	-	-	-	-
K	225	257	257	264	252	227	232	230	246	232	212	177
1	270	235	263	255	279	265	228	246	241	254	246	220
2	274	265	238	251	255	289	261	238	256	232	262	227
3	298	275	271	241	262	264	307	271	248	258	241	258
4	286	297	277	284	246	263	263	310	280	245	263	234
PK-4 Subtotal	1,407	1,392	1,354	1,330	1,344	1,308	1,291	1,295	1,271	1,221	1,224	1,116
5	260	285	291	272	288	255	264	255	315	292	256	255
6	302	260	287	294	276	287	261	282	263	318	304	249
5-6 Grades Subtotal	562	545	578	566	564	542	525	537	578	610	560	504
7	340	316	271	284	299	280	291	271	286	273	326	307
8	322	352	317	267	280	309	283	291	271	281	273	328
7-8 Grades Subtotal	662	668	588	551	579	589	574	562	557	554	599	635
9	373	367	376	325	300	305	322	297	319	286	302	297
10	355	360	352	364	325	290	309	319	290	320	293	307
11	369	338	337	329	342	312	286	305	326	288	332	288
12	339	371	331	339	332	346	318	293	304	321	286	331
9-12 Grades Subtotal	1,436	1,436	1,396	1,357	1,299	1,253	1,235	1,214	1,239	1,215	1,213	1,223
PK-12 Total	4,067	4,041	3,916	3,804	3,786	3,692	3,625	3,608	3,645	3,600	3,596	3,478

Source: Ohio Department of Education



PROJECTED ENROLLMENT

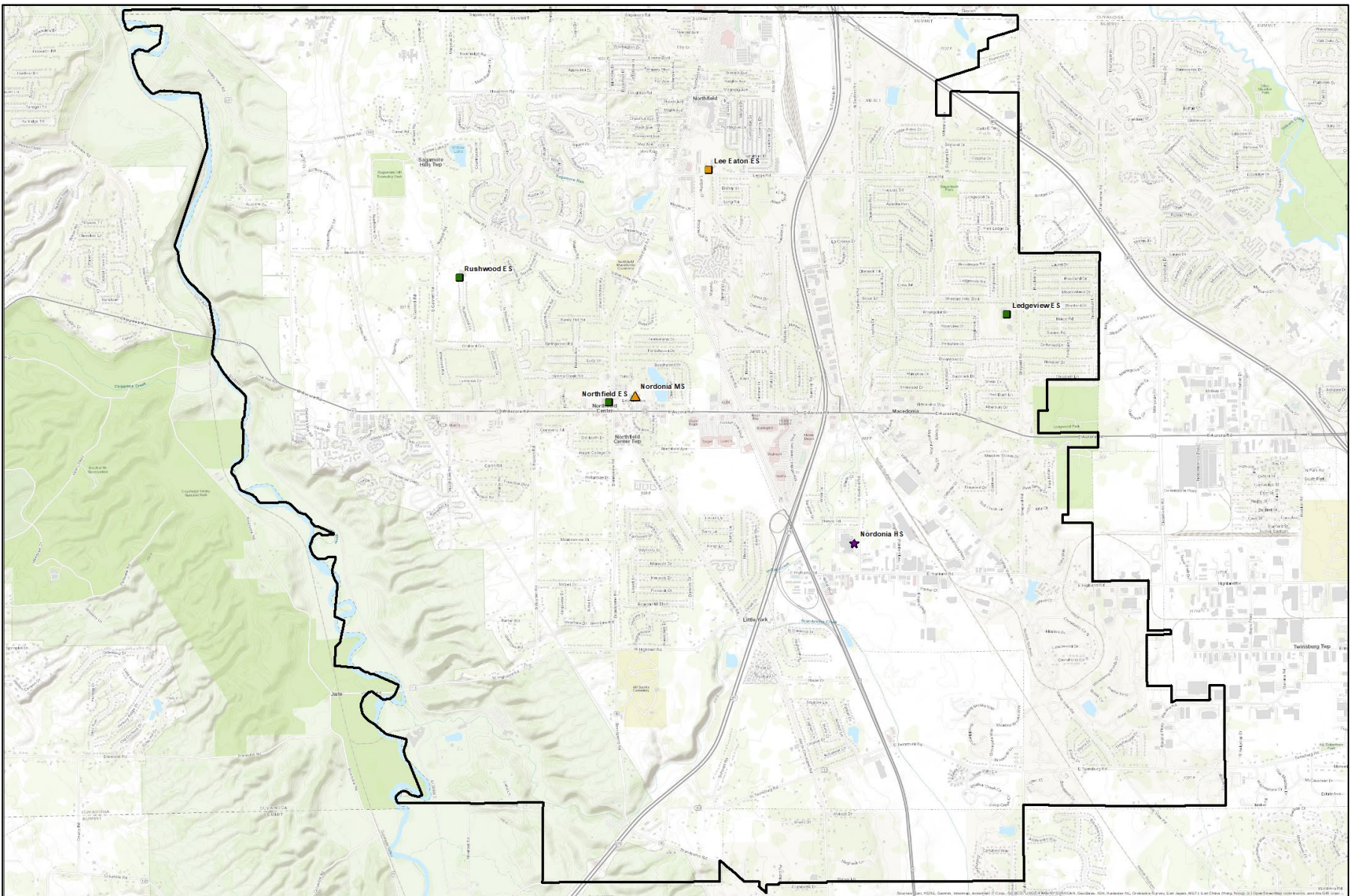


Nordonia Hills Projected Enrollments by School Year											
Grade	2019-20	2020-21	2021-22	2022-23	2023-24	2024-25	2025-26	2026-27	2027-28	2028-29	2029-30
PK special needs	28	35	38	40	37	38	38	38	38	38	38
K	189	207	226	239	219	224	224	224	224	224	224
1	246	198	216	236	251	229	234	234	234	234	234
2	263	250	201	219	239	254	232	238	238	238	238
3	242	272	258	208	227	247	263	240	246	246	246
4	263	244	274	260	209	228	249	264	242	247	247
PK-4 Subtotal	1,231	1,206	1,213	1,202	1,182	1,220	1,240	1,238	1,222	1,227	1,227
5	256	266	247	277	263	212	231	252	267	245	250
6	304	264	274	254	285	270	217	237	259	275	251
5-6 Grades Subtotal	560	530	521	531	548	482	448	489	526	520	501
7	326	311	269	280	259	291	276	222	242	264	281
8	273	326	311	269	280	259	291	276	222	242	264
7-8 Grades Subtotal	599	637	580	549	539	550	567	498	464	506	545
9	303	292	349	332	287	299	277	311	295	237	259
10	293	304	292	349	332	288	299	277	311	295	237
11	216	217	225	217	258	246	213	221	205	230	218
12	210	218	219	226	218	260	248	214	223	206	232
9-12 Grades Subtotal	1,022	1,031	1,085	1,124	1,095	1,093	1,037	1,023	1,034	968	946
Career Tech Off-Site	128	111	113	113	121	129	118	111	109	111	115
PK-12 Total	3,540	3,515	3,512	3,519	3,485	3,474	3,410	3,359	3,355	3,332	3,334

Source: FutureThink

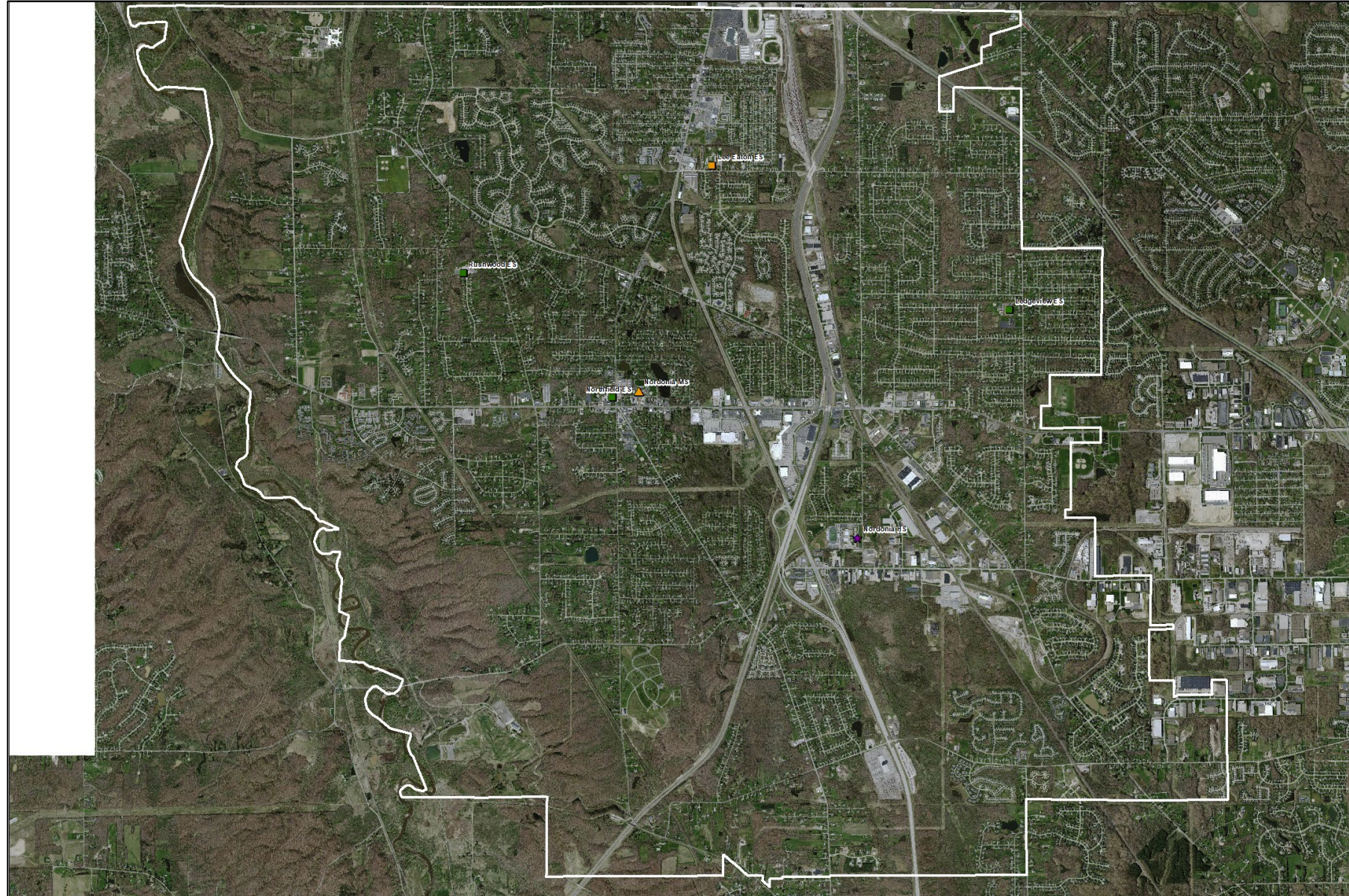


DISTRICT MAP





DISTRICT MAP





ALL SITES



Ledgeview ES



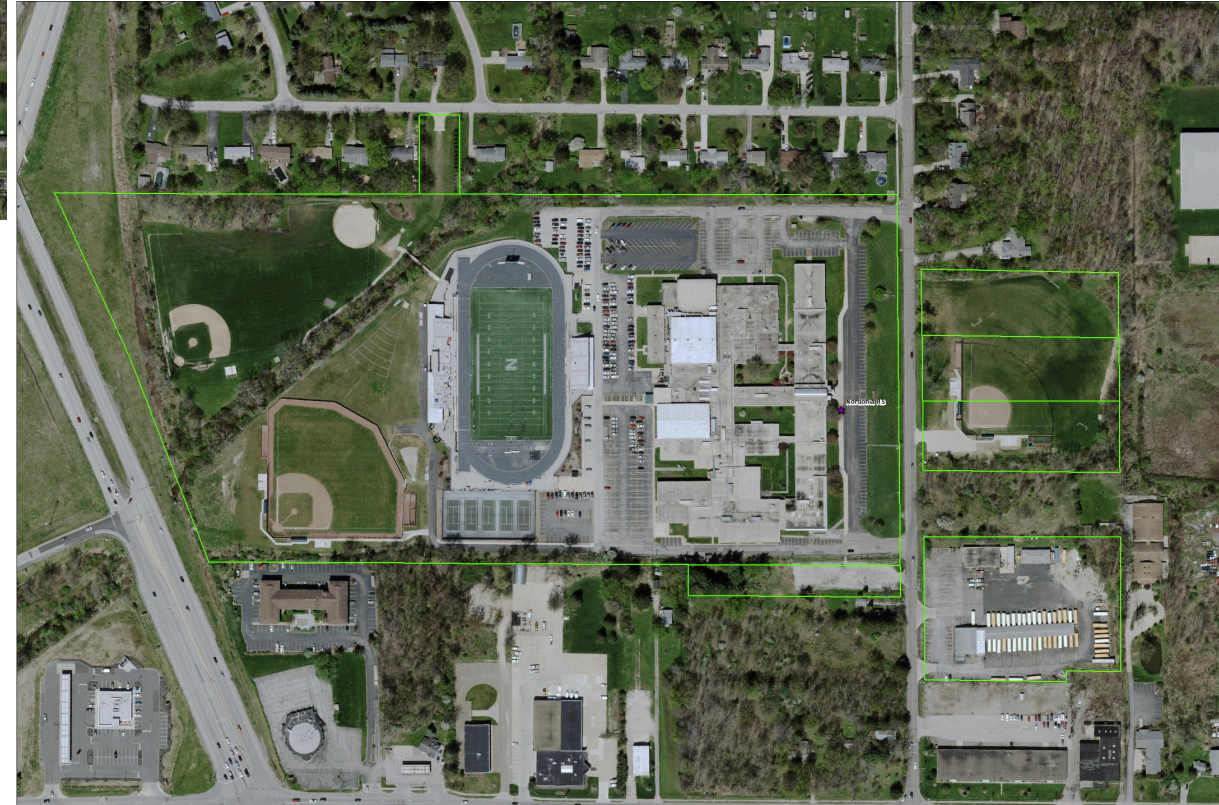
Lee Eaton ES



Rushwood ES



Nordonia HS / Transportation



Northfield ES



Nordonia MS





FACILITY CONDITION



- All current school buildings exceed the Two-Thirds Rule (66% Facility Condition Index) EXCEPT for Nordonia Middle School which is currently right at the 66% FCI rating.
- What does the Two-Thirds Rule mean? Per OFCC....when the cost to renovate a school building exceeds 2/3rd's the cost of constructing a new school building, the OFCC recommends the School District to replace that building. School Districts can request waivers for school buildings that exceed this 2/3rd' rule. Keep in mind also that the OFCC also looks at the educational adequacy of a building if it is to be renovated I must meet the latest Ohio School Design Manual standards and LEED Silver Certification Standards.
- The State of Ohio would co-fund replacing all of the Nordonia City School District buildings.



OFCC ASSESSMENT



- OFCC assesses the following in a School Building: **A thru W**
- **A:** Heating Systems, **B:** Roofing, **C:** Ventilation / Air Conditioning, **D:** Electrical Systems, **E:** Plumbing and Fixtures, **F:** Windows, **G:** Structure (Foundation), **H:** Structure (Walls and Chimneys), **I:** Structure (Floors and Roof), **J:** General Finishes, **K:** Interior Lighting, **L:** Security Systems, **M:** Emergency / Egress Lighting, **N:** Fire Alarm, **O:** Handicapped Access (ADA), **P:** Site Condition, **Q:** Sewage System, **R:** Water Supply, **S:** Exterior Doors, **T:** Hazardous Materials, **U:** Life Safety, **V:** Loose Furnishings and **W:** Technology



NORDONIA HIGH SCHOOL



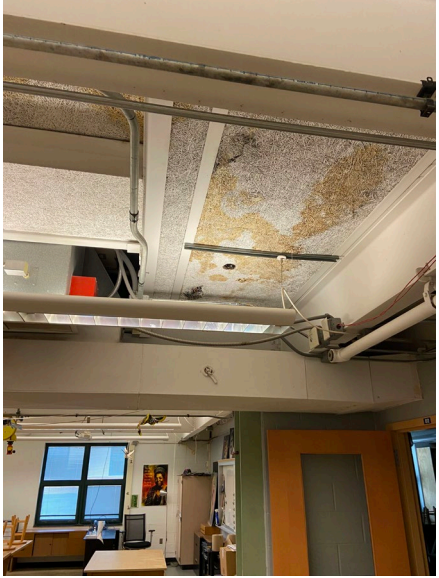
High School Site: 41.2 acres
Softball Site: 5.6 acres
Transportation Site: 3.9 acres

Grades: 9-12





NORDONIA HIGH SCHOOL





NORDONIA MIDDLE SCHOOL

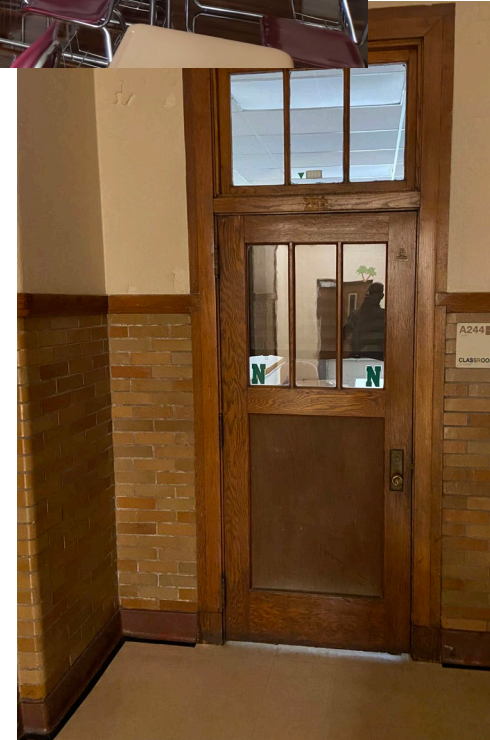


Site: 11 acres
Grades: 7-8





NORDONIA MIDDLE SCHOOL

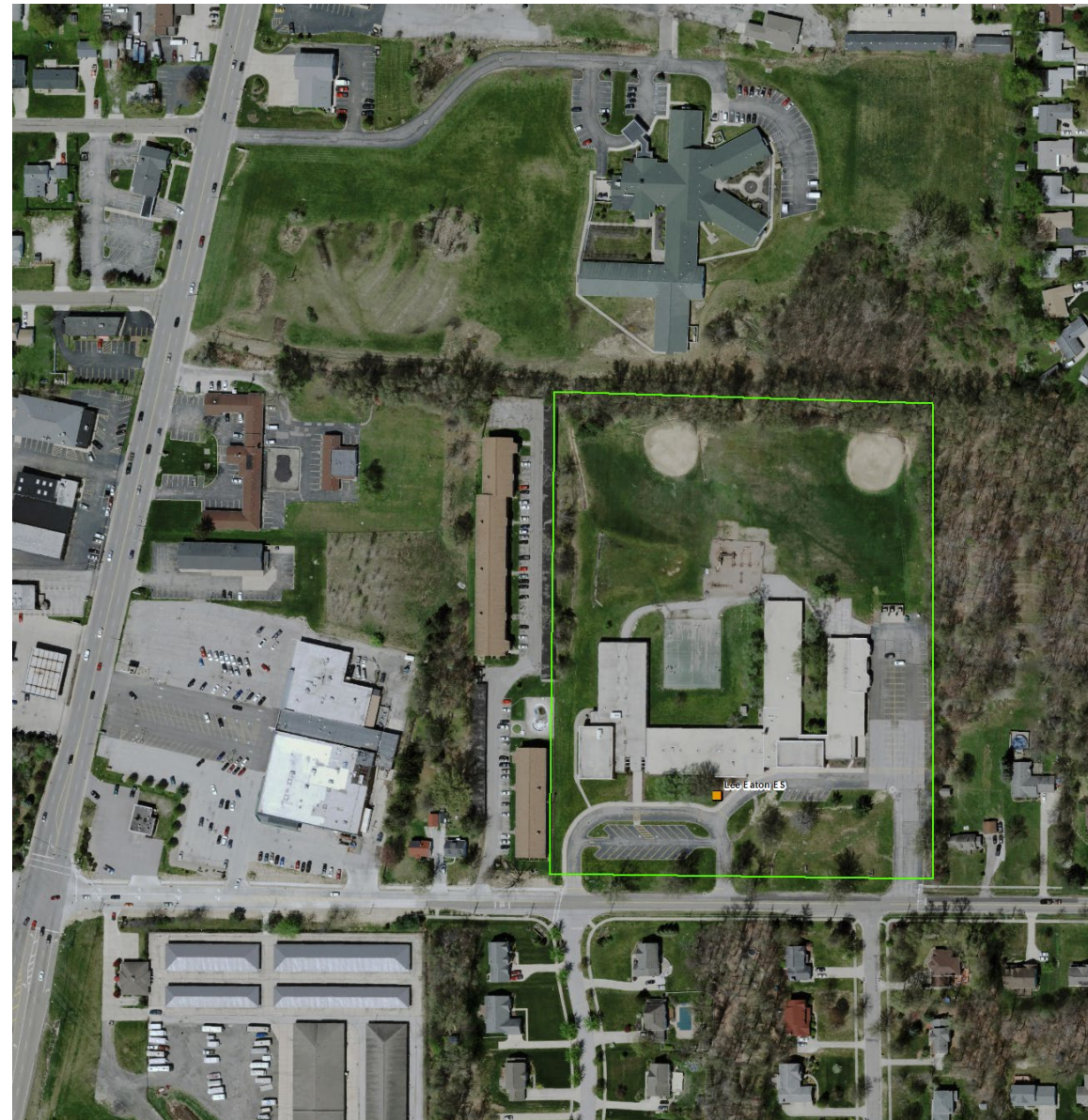




LEE EATON ELEMENTARY SCHOOL

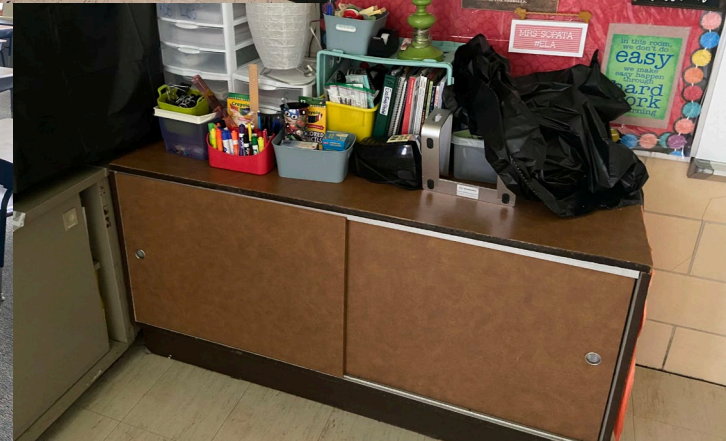


Site: 11.5 acres
Grades: 5-6





LEE EATON ELEMENTARY SCHOOL





NORTHFIELD ELEMENTARY SCHOOL

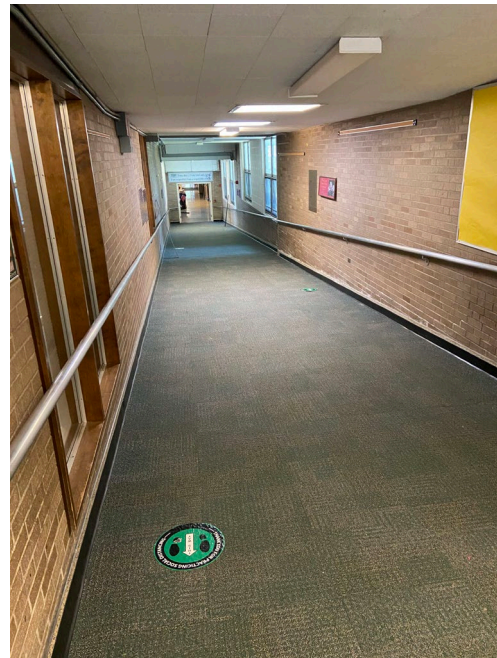
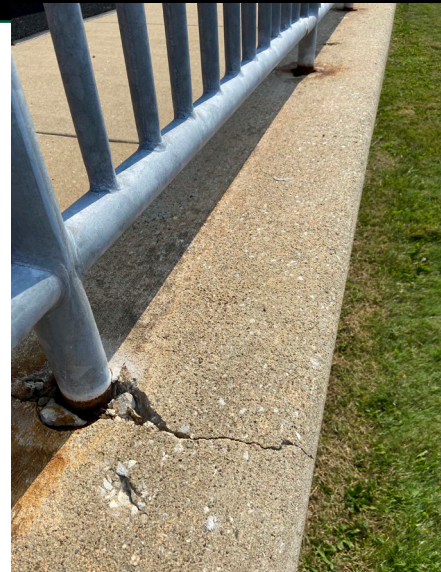


Site: 6.74 acres
Grades: K-4





NORTHFIELD ELEMENTARY SCHOOL





RUSHWOOD ELEMENTARY SCHOOL

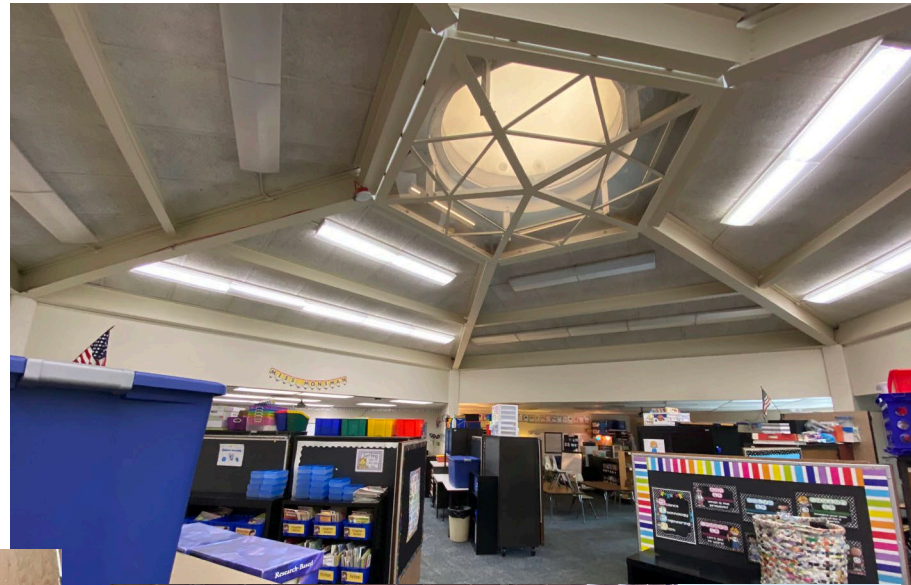


Site: 21.9 acres
Grades: K-4





RUSHWOOD ELEMENTARY SCHOOL





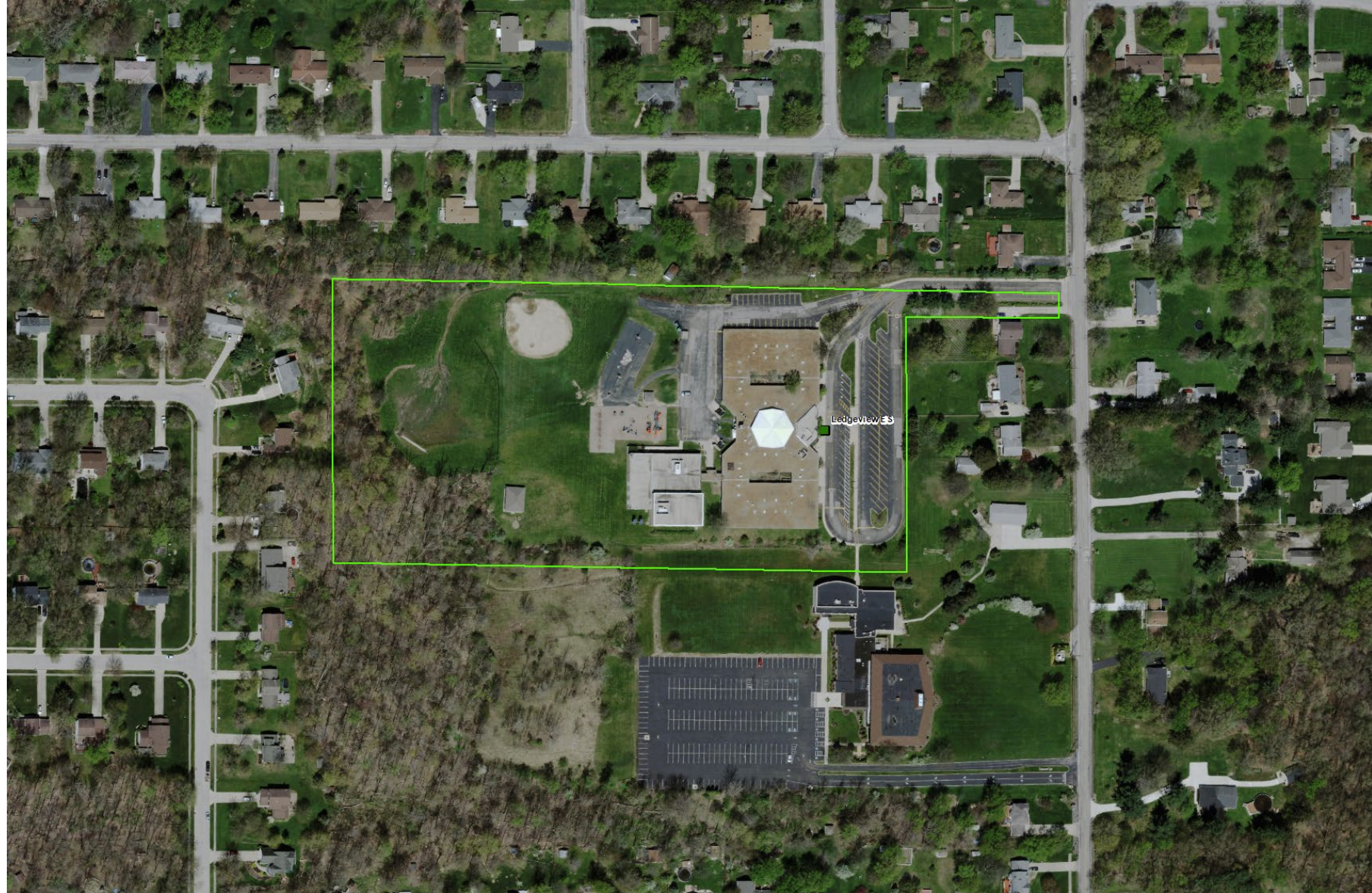
LEDGEVIEW ELEMENTARY SCHOOL



Ledgeview ES

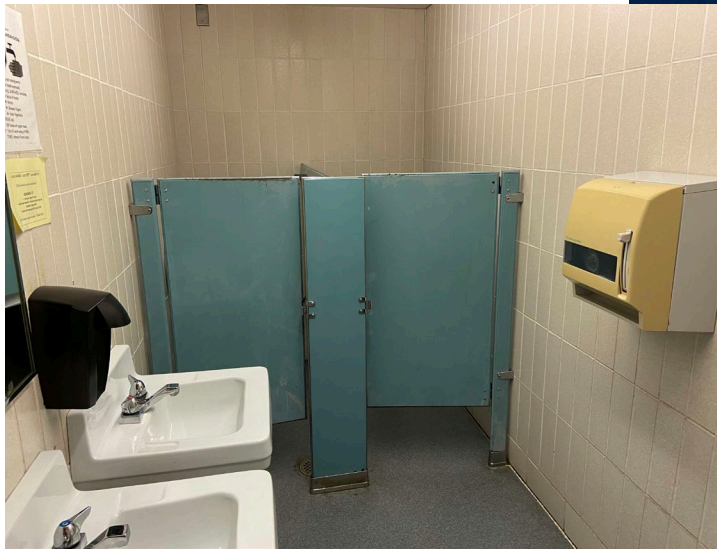
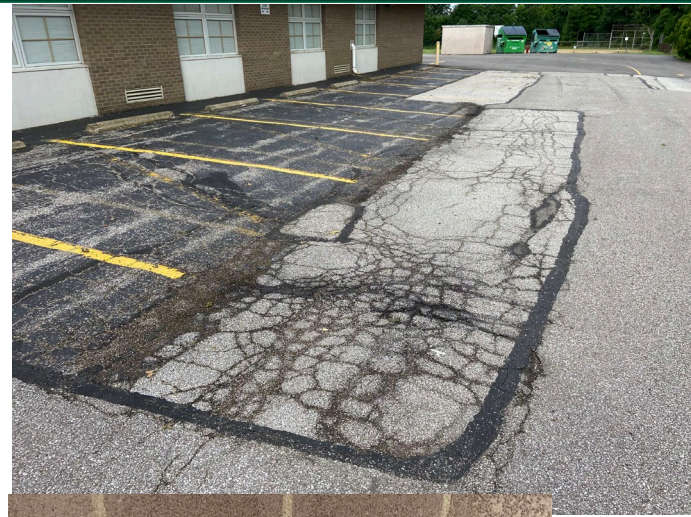
Site: 11.6 acres

Grades: K-4





LEDGEVIEW ELEMENTARY SCHOOL





EDUCATIONAL FRAMEWORK QUESTION TYPES



- Questions are opinion based
- Collect feedback around perception
 - Physical condition of facilities
- Funding
- General Questions
- Facilities Questions
- Grade Configurations
- Educational Programs
- Student Services



EDUCATIONAL FRAMEWORK SAMPLE QUESTIONNAIRE



General Questions

Q8 When choosing a school for your child, which is most important? Please choose your top four (4).

☐

Start Time

☐

Location

☐

Physical condition of the school

☐

Program Focus (e.g., STEM(Science, Technology, Engineering, Math), fine arts, language immersion, etc.)

☐

Academics

☐

Administrator and Staff

☐

Sports/Athletic Programs/Activities/Facilities

☐

Safety

☐

Not applicable/No opinion

Q9 What are the top three (3) challenges facing the academic programs for Triway Local School District?
Please select 3 at most.

☐

Facilities

☐

Curriculum

☐

Staffing

☐

Lack of programming

☐

Lack of gifted programming

☐

Other

Please specify other



EDUCATIONAL FRAMEWORK SAMPLE QUESTIONNAIRE



Q10 What are the top three (3) challenges facing the fine arts programs (visual & performing arts) for Triway Local School District?

Please select 3 at most.

- | | |
|---|---|
| <input type="checkbox"/> Condition of facilities | <input type="checkbox"/> Cost of programs |
| <input type="checkbox"/> Equipment needs | <input type="checkbox"/> Transportation |
| <input type="checkbox"/> Space / time for all programs | <input type="checkbox"/> Lack of facilities or spaces within facilities |
| <input type="checkbox"/> Number / equity of program offerings | <input type="checkbox"/> Other |

Please specify other

Q11 When determining whether a school should be renovated, replaced, built new, re-purposed, or retired: which 3 of the following factors should be considered the highest priority? (Please select only 3)

- | | |
|--|---|
| <input type="checkbox"/> Historical, architectural, or cultural significance of the school | <input type="checkbox"/> Facility is overcrowded or underutilized |
| <input type="checkbox"/> Physical condition of the school | <input type="checkbox"/> Overall cost of the project |
| <input type="checkbox"/> Safety and security of the school | <input type="checkbox"/> The school building does not have the right spaces for the current program(s) being taught |
| <input type="checkbox"/> Ability to accommodate enrollment on current site | <input type="checkbox"/> Other |
| <input type="checkbox"/> Enrollment growth or decline | |

Please specify other

Q12 Would you be interested in the District permitting public access to the facilities or developing partnerships with the services or agencies listed below? If so, please select those you are interested in having the District pursue.

- | | |
|--|--|
| <input type="checkbox"/> Family resource centers | <input type="checkbox"/> Youth and independent sport leagues |
| <input type="checkbox"/> Health services | <input type="checkbox"/> Day care / child care |
| <input type="checkbox"/> Parks & Rec programs | <input type="checkbox"/> GED Preparation & Testing |
| <input type="checkbox"/> Adult education programs | <input type="checkbox"/> Public Library |
| <input type="checkbox"/> Senior Services | <input type="checkbox"/> Public / City / County Services (police, fire, hospital , etc.) |
| <input type="checkbox"/> Wellness center | <input type="checkbox"/> College/University/Career Tech Classes |
| <input type="checkbox"/> After school programs (YMCA for example) | <input type="checkbox"/> Veterans Organizations |
| <input type="checkbox"/> Community service groups (For example: churches, Rotary, community centers) | <input type="checkbox"/> Other |

Please specify other



EDUCATIONAL FRAMEWORK SAMPLE QUESTIONNAIRE



Facility Questions

Q13 What kind of facilities do you expect your communities (School Districts) to operate?

Q14 Do you believe updated/newer facilities strengthen our community and make it a better place to live?

- ☐ Yes
☐ No
☐ Don't Know / No Opinion

Q15 How well do you believe our facilities currently align with the education needs to be delivered in the future?

- Not Well Somewhat Well Don't Know/No Opinion Well Very Well
- ☐ ☐ ☐ ☐ ☐

Q16 What is your perception of the overall condition and educational suitability of the District's facilities?
(1 = poor condition, 4 = great condition)

	1	2	3	4	Don't Know / No Opinion
Triway High School	<input type="checkbox"/>	<input type="checkbox"/>	<input type="checkbox"/>	<input type="checkbox"/>	<input type="checkbox"/>
Triway Junior High School	<input type="checkbox"/>	<input type="checkbox"/>	<input type="checkbox"/>	<input type="checkbox"/>	<input type="checkbox"/>
Franklin Twp. Elementary	<input type="checkbox"/>	<input type="checkbox"/>	<input type="checkbox"/>	<input type="checkbox"/>	<input type="checkbox"/>
Shreve Elementary	<input type="checkbox"/>	<input type="checkbox"/>	<input type="checkbox"/>	<input type="checkbox"/>	<input type="checkbox"/>
Wooster Twp. Elementary	<input type="checkbox"/>	<input type="checkbox"/>	<input type="checkbox"/>	<input type="checkbox"/>	<input type="checkbox"/>

Q17 If it is determined that a building has reached the end of its useful life, which is the best action for building disposition?
(Please select only one.)

- ☐ Demolish the building, but keep the land for future use or sale (Land-Bank)
☐ Find the most cost beneficial use or sale of the property regardless of what the site becomes
☐ Maintain the unoccupied building for potential future use. (Keeping in mind that it has expended its useful life)
☐ Sell any surplus properties.
☐ The District should exhaust all opportunities to find a new non-instructional use within the District



EDUCATIONAL FRAMEWORK SAMPLE QUESTIONNAIRE



Q18 Please rate the following actions based on level of importance.
(1 = not important, 4 = very important)

	1	2	3	4	Don't Know / No Opinion
Addressing facility condition issues (permanent improvement)	<input type="checkbox"/>	<input type="checkbox"/>	<input type="checkbox"/>	<input type="checkbox"/>	<input type="checkbox"/>
Bring all facilities to ADA (handicap accessible) compliance	<input type="checkbox"/>	<input type="checkbox"/>	<input type="checkbox"/>	<input type="checkbox"/>	<input type="checkbox"/>
Enhancing technology infrastructure	<input type="checkbox"/>	<input type="checkbox"/>	<input type="checkbox"/>	<input type="checkbox"/>	<input type="checkbox"/>
Enhancing safety and security	<input type="checkbox"/>	<input type="checkbox"/>	<input type="checkbox"/>	<input type="checkbox"/>	<input type="checkbox"/>
Increasing operating revenue for educational services	<input type="checkbox"/>	<input type="checkbox"/>	<input type="checkbox"/>	<input type="checkbox"/>	<input type="checkbox"/>
Other	<input type="checkbox"/>	<input type="checkbox"/>	<input type="checkbox"/>	<input type="checkbox"/>	<input type="checkbox"/>
Please specify other	<input type="text"/>				

Grade Configuration

Q19 How many total school sites do you believe the district should operate? (Note: One site may have more than one building).

- ☐ One site (all district students would be served at one location)
- ☐ Two sites (ex. K-5, 6-12 OR K-6, 7-12)
- ☐ Three sites (ex. K-5, 6-8, 9-12 OR K-6, 7-8, 9-12)
- ☐ Four sites (current)

Q20 As a concept, which of the following grade configurations would you like the District to consider?
Check all that apply.

- | | |
|--|---|
| <input type="checkbox"/> Pre-k-5, 6-12 | <input type="checkbox"/> Pre-k-6 (3), 7-8, 9-12 |
| <input type="checkbox"/> Pre-k-6, 7-12 | <input type="checkbox"/> Pre-k-4, 5-8, 9-12 |
| <input type="checkbox"/> Pre-k-12 | <input type="checkbox"/> Other |
| <input type="checkbox"/> Pre-k-2, 3-5, 6-8, 9-12 | |

Please specify other



EDUCATIONAL FRAMEWORK SAMPLE QUESTIONNAIRE



Q21 Please rate the importance of the following factors for your choices above.

	Not Important	No Opinion	Important
Age difference between students	<input type="checkbox"/>	<input type="checkbox"/>	<input type="checkbox"/>
Program focus (e.g., STEM (Science, Technology, Engineering, Math), fine arts, language immersion, etc.)	<input type="checkbox"/>	<input type="checkbox"/>	<input type="checkbox"/>
Limiting the number of times a student changes schools	<input type="checkbox"/>	<input type="checkbox"/>	<input type="checkbox"/>
Travel time to and from school	<input type="checkbox"/>	<input type="checkbox"/>	<input type="checkbox"/>

Q22 Please share any other factors that influenced your choices in questions 19, 20, & 21.

Educational Program Questions

Q23 Weighing the balance between fiscal responsibility and low student - teacher ratios, what do you feel the ideal class size is for students in Triway Local School District?
(Please select one for each grade range.)

	<20	20-25	26-30	>30
Pre-K	<input type="checkbox"/>	<input type="checkbox"/>	<input type="checkbox"/>	<input type="checkbox"/>
Elementary K-2	<input type="checkbox"/>	<input type="checkbox"/>	<input type="checkbox"/>	<input type="checkbox"/>
Elementary 3-6	<input type="checkbox"/>	<input type="checkbox"/>	<input type="checkbox"/>	<input type="checkbox"/>
Junior High 7-8	<input type="checkbox"/>	<input type="checkbox"/>	<input type="checkbox"/>	<input type="checkbox"/>
High School 9-12	<input type="checkbox"/>	<input type="checkbox"/>	<input type="checkbox"/>	<input type="checkbox"/>

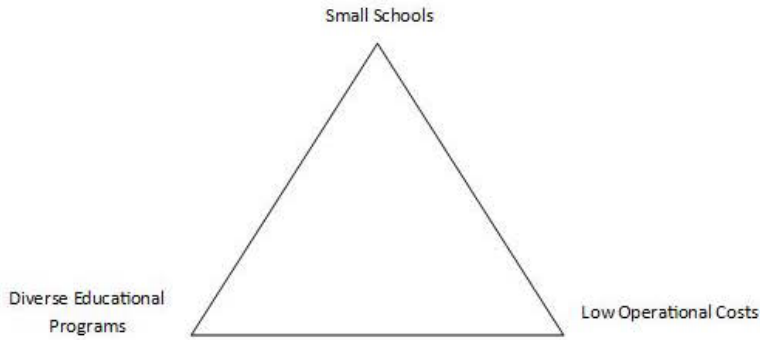


EDUCATIONAL FRAMEWORK SAMPLE QUESTIONNAIRE



Small Schools + Diverse Educational Programs = Small Schools with Diverse Programs that are expensive to operate.
Diverse Educational Programs + Low Operational Costs = Diverse Educational Program in a larger school to keep costs down.
Small Schools + Low Operational Costs = Small Schools with limited programs to keep costs down.

**Assume class size will remain constant throughout all scenarios.



Q24 Please answer the following question regarding school size.
Keep in mind that the enrollment may fluctuate based on desired class size, but student to teacher ratios would remain the same.
Chose your two (2) preferences from the image above.

- ☐ Diverse Educational Programs
- ☐ Low Operational Costs
- ☐ Small Schools

Q25 In your opinion, where should Pre-k spaces be located in the District?

- ☐ Offered at all schools that currently have Kindergarten
- ☐ Offered at one District Pre-k Center
- ☐ Other

Please specify other



EDUCATIONAL FRAMEWORK SAMPLE QUESTIONNAIRE



Student Services

Q26 The District offers a wide range of services/programs for students. In your opinion, where should these services be located in the District?

	Programs offered at each school	A single centralized center	One center in each location	A combination of locations & schools
Gifted	<input type="checkbox"/>	<input type="checkbox"/>	<input type="checkbox"/>	<input type="checkbox"/>
Special Education	<input type="checkbox"/>	<input type="checkbox"/>	<input type="checkbox"/>	<input type="checkbox"/>
STEM (Science, Technology, Engineering, Math)	<input type="checkbox"/>	<input type="checkbox"/>	<input type="checkbox"/>	<input type="checkbox"/>
Other	<input type="checkbox"/>	<input type="checkbox"/>	<input type="checkbox"/>	<input type="checkbox"/>
Please specify other		<input type="text"/>		

Q27 Should career and technical education (CTE) be integrated into Triway's curriculum or continue to be offered at Wayne County Schools Career Center?

- ☐ More included in curriculum
- ☐ Offered at Wayne County Schools Career Center
- ☐ Both

Q28 Please select the top 6 current Career and Technical Education programs that you believe will provide students with the most opportunities after graduation.

- | | |
|--|--|
| <input type="checkbox"/> Agriculture, Food and Natural Resources | <input type="checkbox"/> Health Science |
| <input type="checkbox"/> Architecture and Construction | <input type="checkbox"/> Hospitality and Tourism |
| <input type="checkbox"/> Arts, Audio/Video Technology, and Communications | <input type="checkbox"/> Human Services |
| <input type="checkbox"/> Automotive Mechanics | <input type="checkbox"/> Information Technology / Computer Science |
| <input type="checkbox"/> Business, Entrepreneurship, Management and Administration | <input type="checkbox"/> Law, Public Safety, Corrections and Security |
| <input type="checkbox"/> Education and Training | <input type="checkbox"/> Manufacturing |
| <input type="checkbox"/> Finance | <input type="checkbox"/> Marketing |
| <input type="checkbox"/> Government and Public Administration | <input type="checkbox"/> Science, Technology, Engineering, and Mathematics |
| | <input type="checkbox"/> Transportation, Distribution, and Logistics |



EDUCATIONAL FRAMEWORK SAMPLE QUESTIONNAIRE



Locally Funded Initiatives

Q29 There are spaces within a school that the State of Ohio does not co-fund. These projects are typically funded by local taxes.

As a local tax payer, assuming no philanthropic donations, how important do you believe the following spaces are in schools?

(1 = not important, 4 = very important)

	1	2	3	4	Don't Know / No Opinion
Auditoriums (Middle School)	<input type="checkbox"/>	<input type="checkbox"/>	<input type="checkbox"/>	<input type="checkbox"/>	<input type="checkbox"/>
Auditoriums (High School)	<input type="checkbox"/>	<input type="checkbox"/>	<input type="checkbox"/>	<input type="checkbox"/>	<input type="checkbox"/>
Outdoor athletic facilities (stadiums, tracks, football fields, soccer fields, etc.)	<input type="checkbox"/>	<input type="checkbox"/>	<input type="checkbox"/>	<input type="checkbox"/>	<input type="checkbox"/>
Larger gymnasiums (High School)	<input type="checkbox"/>	<input type="checkbox"/>	<input type="checkbox"/>	<input type="checkbox"/>	<input type="checkbox"/>
Adult Education	<input type="checkbox"/>	<input type="checkbox"/>	<input type="checkbox"/>	<input type="checkbox"/>	<input type="checkbox"/>
Outdoor Education Center/Camp	<input type="checkbox"/>	<input type="checkbox"/>	<input type="checkbox"/>	<input type="checkbox"/>	<input type="checkbox"/>

Q30 The following are things that the State does not fund. How important is it to include these in the facilities master plan?

(1 = not important, 4 = very important)

	1	2	3	4	Don't Know / No Opinion
Non-school facilities (bus garage, food service production center, etc.)	<input type="checkbox"/>	<input type="checkbox"/>	<input type="checkbox"/>	<input type="checkbox"/>	<input type="checkbox"/>
Land for schools to be built on	<input type="checkbox"/>	<input type="checkbox"/>	<input type="checkbox"/>	<input type="checkbox"/>	<input type="checkbox"/>
Centralized student health clinic	<input type="checkbox"/>	<input type="checkbox"/>	<input type="checkbox"/>	<input type="checkbox"/>	<input type="checkbox"/>



EDUCATIONAL FRAMEWORK SAMPLE QUESTIONNAIRE



Q31

How likely would it be that you would support a tax increase for the following:

	No	Maybe	Yes	Don't Know / No Opinion
Addressing facility condition issues (permanent improvement)	<input type="checkbox"/>	<input type="checkbox"/>	<input type="checkbox"/>	<input type="checkbox"/>
Enhancing technology infrastructure (e.g. computer networking, WiFi, etc.)	<input type="checkbox"/>	<input type="checkbox"/>	<input type="checkbox"/>	<input type="checkbox"/>
Enhancing overall access to technology to support learning (e.g. computers, tablets, etc.)	<input type="checkbox"/>	<input type="checkbox"/>	<input type="checkbox"/>	<input type="checkbox"/>
Enhancing safety and security (e.g. cameras, proximity cards, etc.)	<input type="checkbox"/>	<input type="checkbox"/>	<input type="checkbox"/>	<input type="checkbox"/>
Increasing current operating revenue to support current educational services	<input type="checkbox"/>	<input type="checkbox"/>	<input type="checkbox"/>	<input type="checkbox"/>
Other	<input type="checkbox"/>	<input type="checkbox"/>	<input type="checkbox"/>	<input type="checkbox"/>

Please specify other:

Q32

Is there anything else you would like for us to consider?



PROJECT WEBSITE



<https://coopstratprojects.com/nordoniahillscitysd/>



THANK YOU!

Steering Committee #2:
October 20
Northfield Elementary Cafeteria
6:00 pm

