



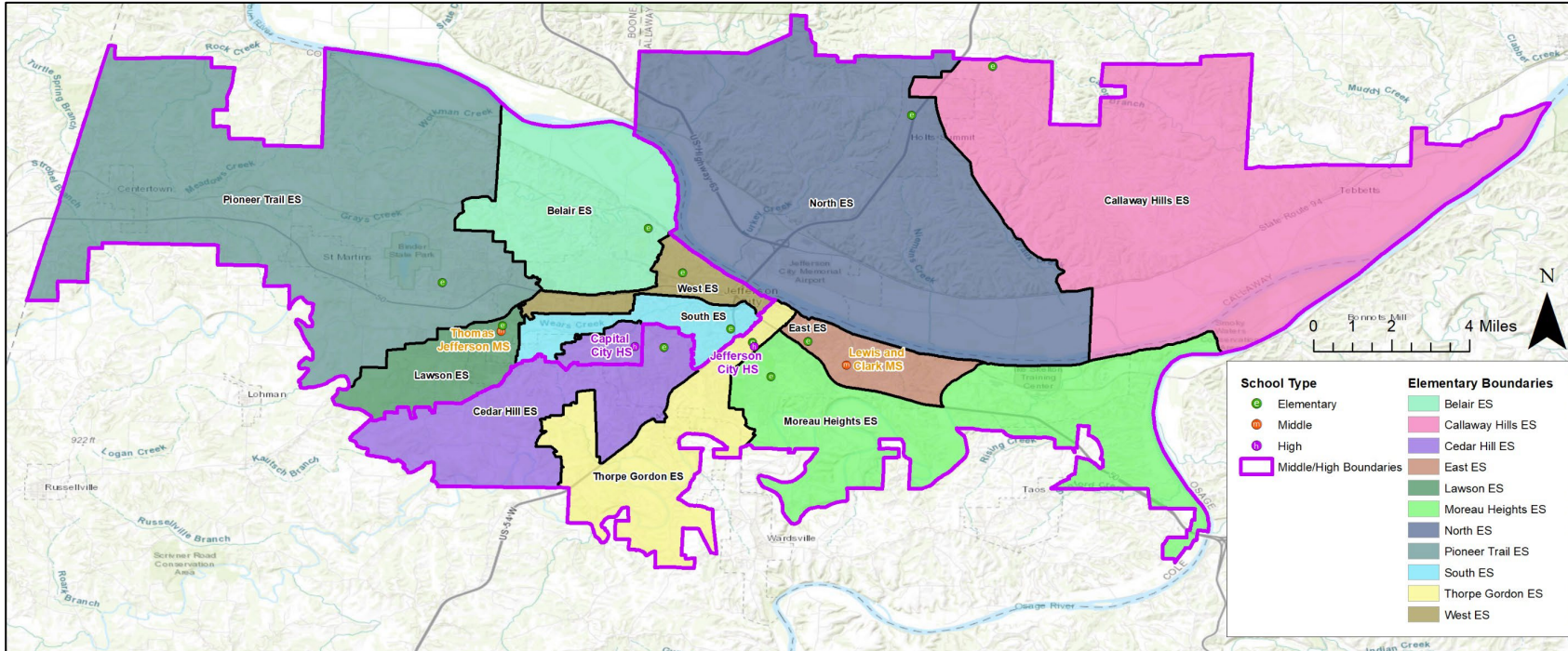
COOPERATIVE STRATEGIES

COMPLETE FINANCIAL & DEMOGRAPHIC PLANNING FOR EDUCATION

**JEFFERSON CITY SCHOOLS
BOARD UPDATE**

JANUARY 24, 2022

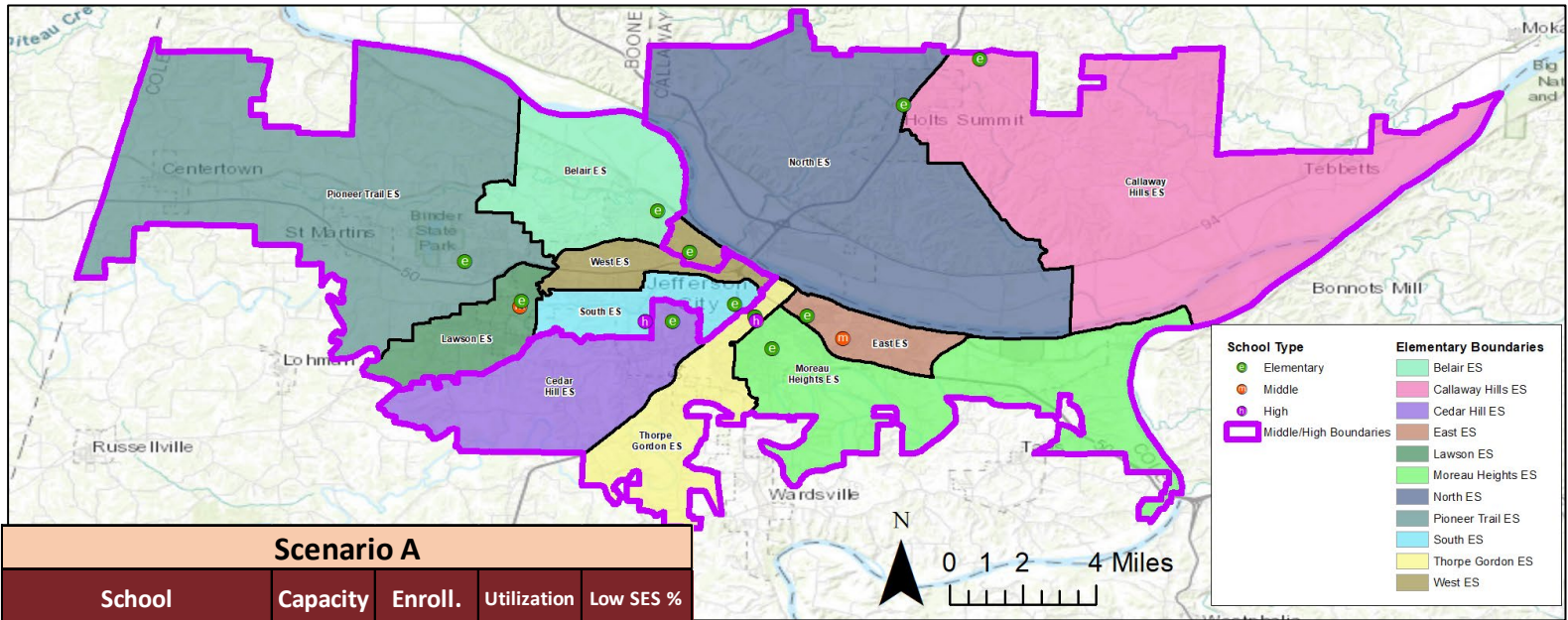
21-22 ATTENDANCE AREAS



School	Capacity	Enrollment	Utilization	Low SES %
Belair ES	431	433	100%	46%
Callaway Hills ES	298	237	80%	70%
Cedar Hill ES	429	322	75%	41%
East ES	387	266	69%	77%
Lawson ES	471	385	82%	56%
Moreau Heights ES	437	291	67%	62%
North ES	451	412	91%	42%
Pioneer Trail ES	538	501	93%	51%
South ES	340	261	77%	73%
Thorpe Gordon ES	340	300	88%	78%
West ES	409	296	72%	61%
ELEMENTARY SUBTOTAL	4,531	3,704	82%	58%
Thomas Jefferson MS	972	1,050	108%	52%
Lewis and Clark MS	972	867	89%	59%
MIDDLE SUBTOTAL	1,944	1,917	99%	56%
Capital City HS	1,600	1,456	91%	44%
Jefferson City HS	1,800	1,228	68%	46%
HIGH SUBTOTAL	3,400	2,684	79%	45%

Feeder Chart	L&C MS	TJ MS
Belair ES	0%	100%
Callaway Hills ES	100%	0%
Cedar Hill ES	90%	10%
East ES	100%	0%
Lawson ES	0%	100%
Moreau Heights ES	100%	0%
North ES	100%	0%
Pioneer Trail ES	0%	100%
South ES	0%	100%
Thorpe Gordon ES	100%	0%
West ES	0%	100%

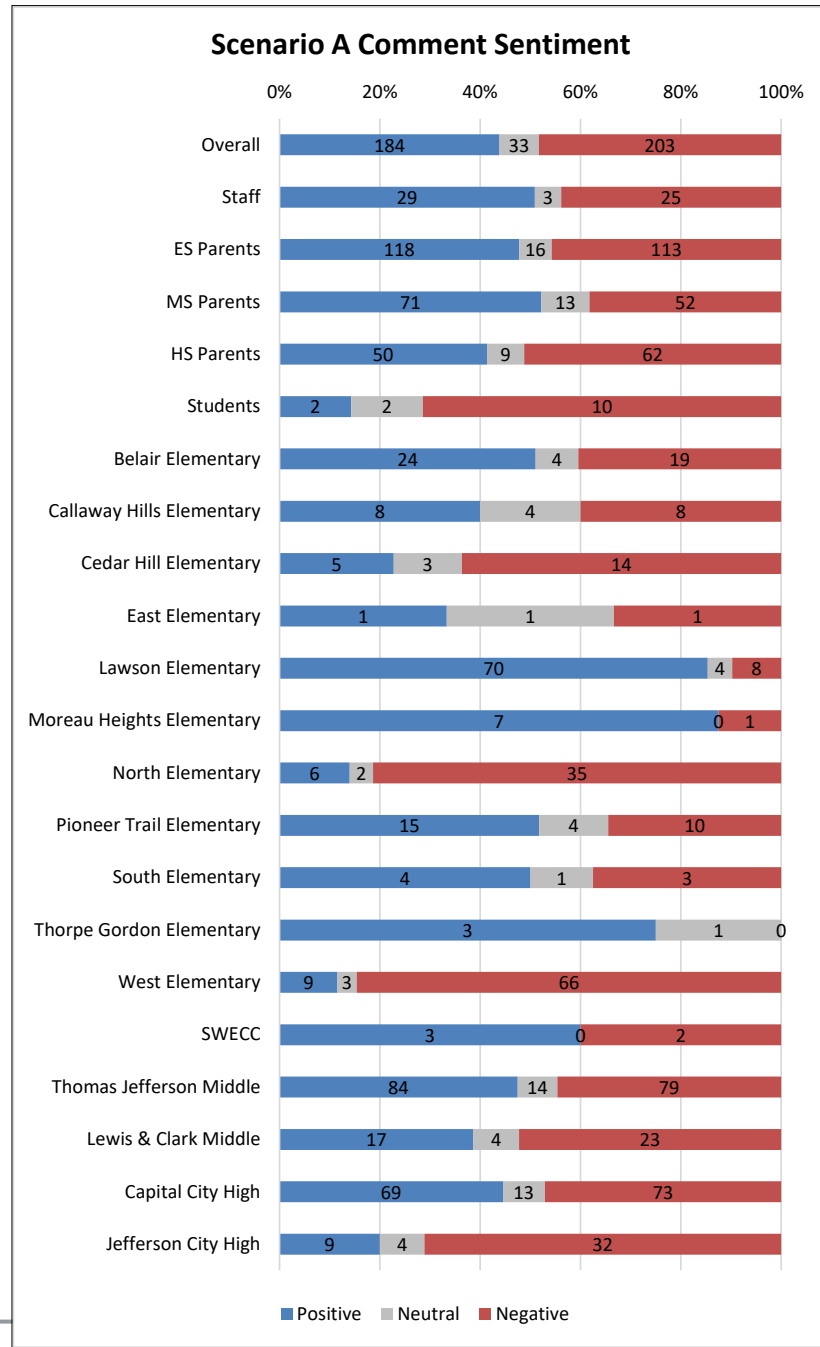
SCENARIO A



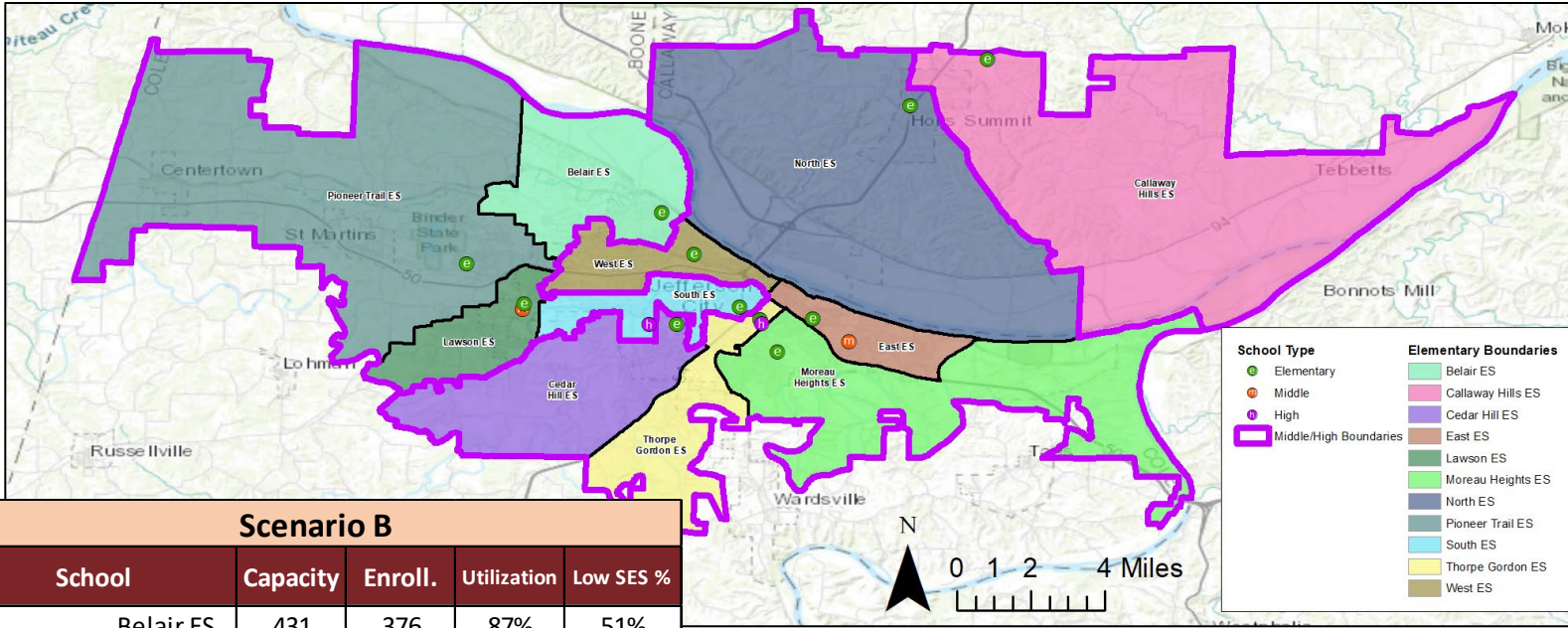
Scenario A				
School	Capacity	Enroll.	Utilization	Low SES %
Belair ES	431	393	91%	50%
Callaway Hills ES	298	254	85%	60%
Cedar Hill ES	429	322	75%	45%
East ES	387	266	69%	77%
Lawson ES	471	404	86%	55%
Moreau Heights ES	437	291	67%	62%
North ES	451	395	88%	47%
Pioneer Trail ES	538	482	90%	51%
South ES	340	292	86%	69%
Thorpe Gordon ES	340	269	79%	79%
West ES	409	336	82%	55%
ELEMENTARY SUBTOTAL	4,531	3,704	82%	58%
Thomas Jefferson MS	972	944	97%	53%
Lewis and Clark MS	972	973	100%	58%
MIDDLE SUBTOTAL	1,944	1,917	99%	56%
Capital City HS	1,600	1,300	81%	43%
Jefferson City HS	1,800	1,384	77%	46%
HIGH SUBTOTAL	3,400	2,684	79%	45%

Feeder Chart	L&C MS	TJ MS
Belair ES	0%	100%
Callaway Hills ES	100%	0%
Cedar Hill ES	100%	0%
East ES	100%	0%
Lawson ES	0%	100%
Moreau Heights ES	100%	0%
North ES	100%	0%
Pioneer Trail ES	0%	100%
South ES	0%	100%
Thorpe Gordon ES	100%	0%
West ES	43%	57%

Students Moved	Total
Elementary	274
Middle	106
High	156



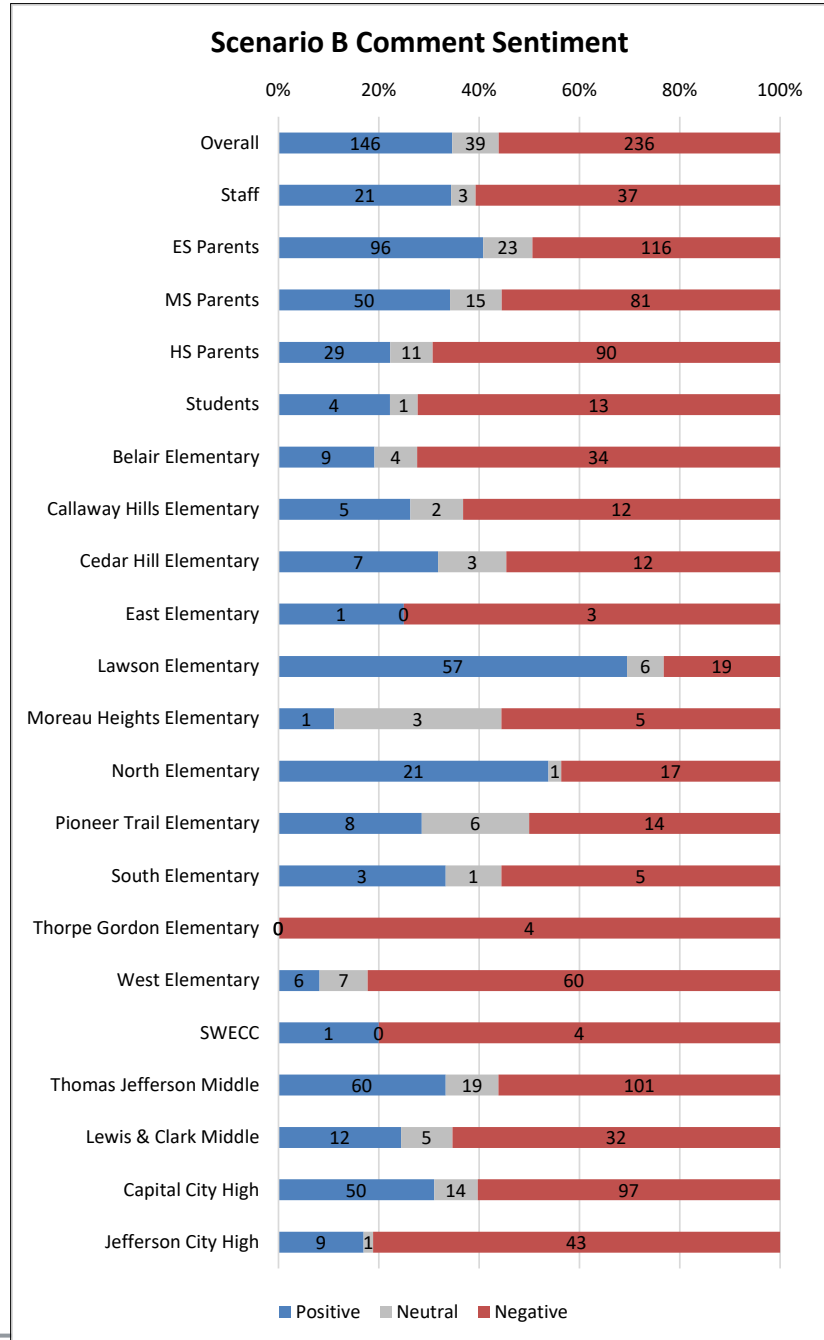
SCENARIO B



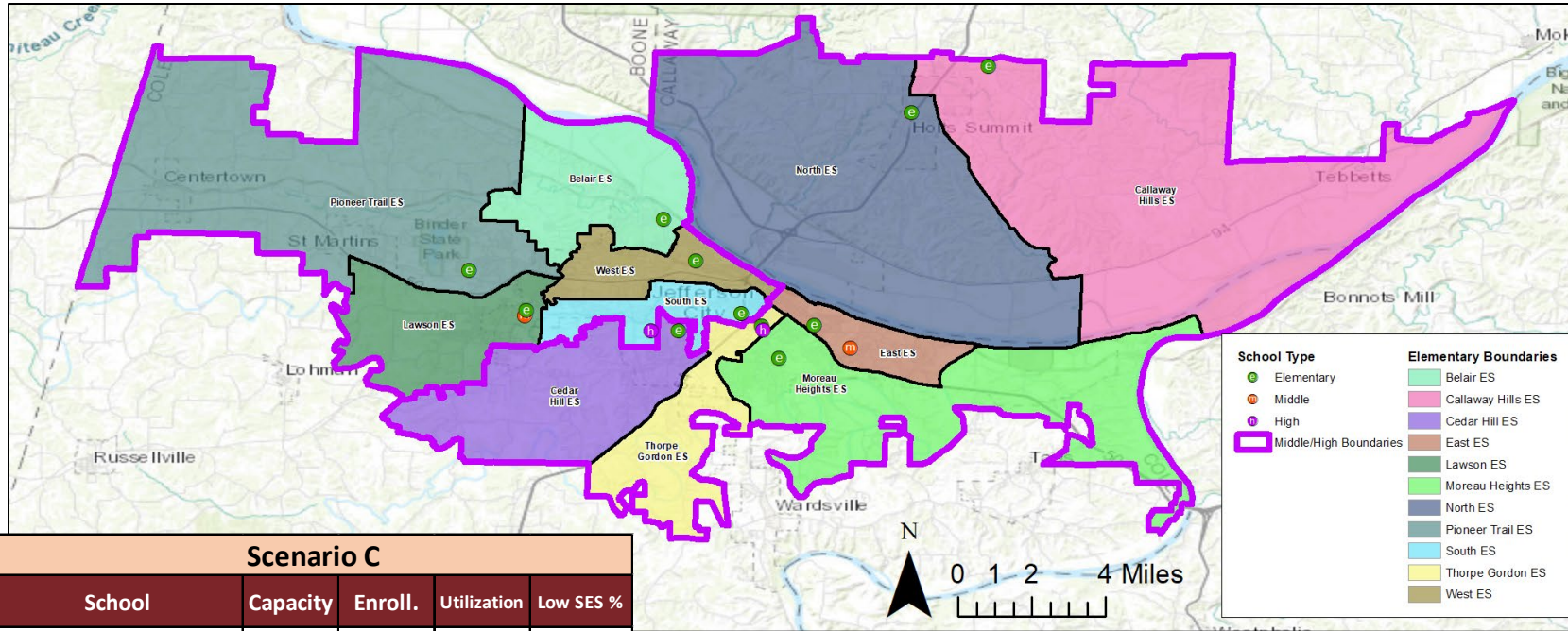
Scenario B				
School	Capacity	Enroll.	Utilization	Low SES %
Belair ES	431	376	87%	51%
Callaway Hills ES	298	256	86%	69%
Cedar Hill ES	429	303	71%	44%
East ES	387	280	72%	79%
Lawson ES	471	404	86%	55%
Moreau Heights ES	437	338	77%	60%
North ES	451	393	87%	41%
Pioneer Trail ES	538	482	90%	51%
South ES	340	284	84%	68%
Thorpe Gordon ES	340	235	69%	80%
West ES	409	353	86%	54%
ELEMENTARY SUBTOTAL	4,531	3,704	82%	58%
Thomas Jefferson MS	972	978	101%	55%
Lewis and Clark MS	972	939	97%	56%
MIDDLE SUBTOTAL	1,944	1,917	99%	56%
Capital City HS	1,600	1,309	82%	43%
Jefferson City HS	1,800	1,375	76%	46%
HIGH SUBTOTAL	3,400	2,684	79%	45%

Feeder Chart	L&C MS	TJ MS
Belair ES	0%	100%
Callaway Hills ES	0%	100%
Cedar Hill ES	100%	0%
East ES	100%	0%
Lawson ES	0%	100%
Moreau Heights ES	100%	0%
North ES	100%	0%
Pioneer Trail ES	0%	100%
South ES	0%	100%
Thorpe Gordon ES	100%	0%
West ES	100%	0%

Students Moved	Total
Elementary	264
Middle	354
High	479



SCENARIO C



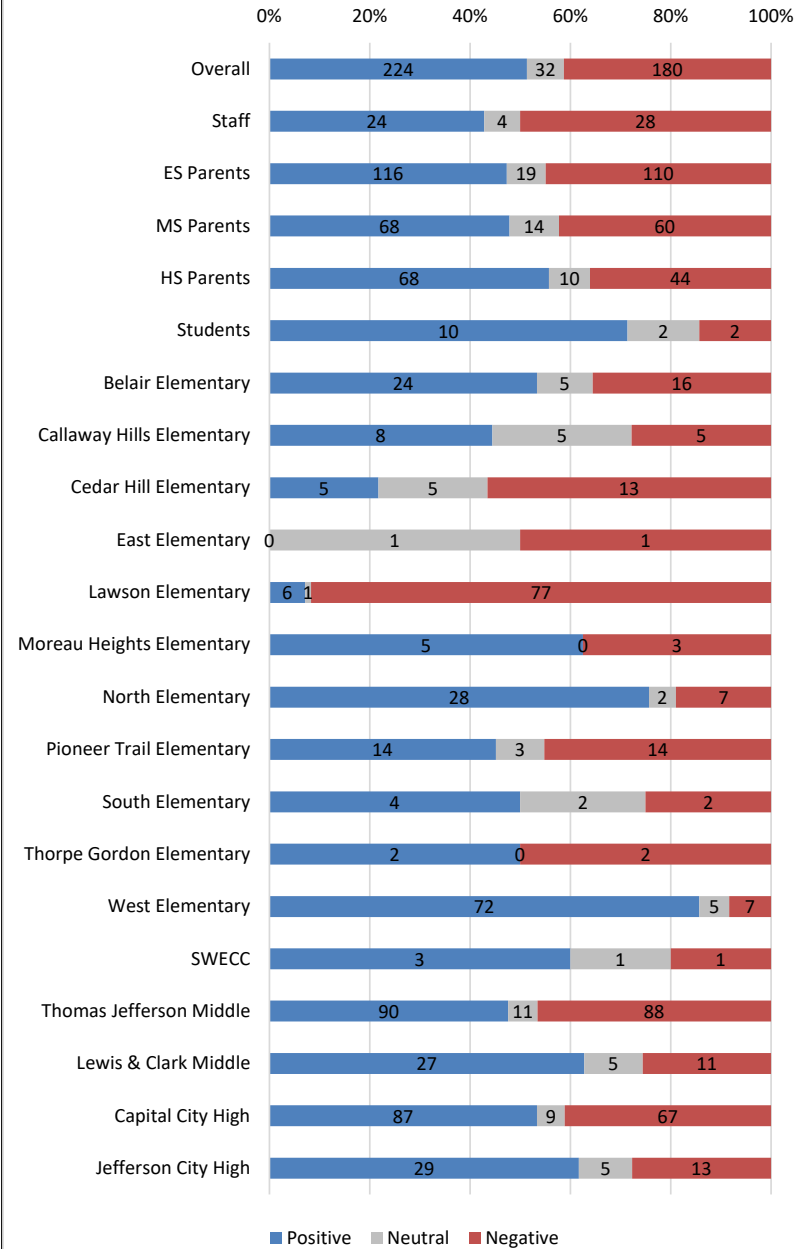
Scenario C

School	Capacity	Enroll.	Utilization	Low SES %
Belair ES	431	376	87%	51%
Callaway Hills ES	298	256	86%	69%
Cedar Hill ES	429	393	92%	43%
East ES	387	280	72%	79%
Lawson ES	471	374	79%	59%
Moreau Heights ES	437	338	77%	60%
North ES	451	393	87%	41%
Pioneer Trail ES	538	422	78%	51%
South ES	340	284	84%	68%
Thorpe Gordon ES	340	235	69%	80%
West ES	409	353	86%	54%
ELEMENTARY SUBTOTAL	4,531	3,704	82%	58%
Thomas Jefferson MS	972	995	102%	54%
Lewis and Clark MS	972	922	95%	58%
MIDDLE SUBTOTAL	1,944	1,917	99%	56%
Capital City HS	1,600	1,370	86%	44%
Jefferson City HS	1,800	1,314	73%	46%
HIGH SUBTOTAL	3,400	2,684	79%	45%

Feeder Chart	L&C MS	TJ MS
Belair ES	0%	100%
Callaway Hills ES	100%	0%
Cedar Hill ES	100%	0%
East ES	100%	0%
Lawson ES	0%	100%
Moreau Heights ES	100%	0%
North ES	100%	0%
Pioneer Trail ES	0%	100%
South ES	0%	100%
Thorpe Gordon ES	100%	0%
West ES	0%	100%

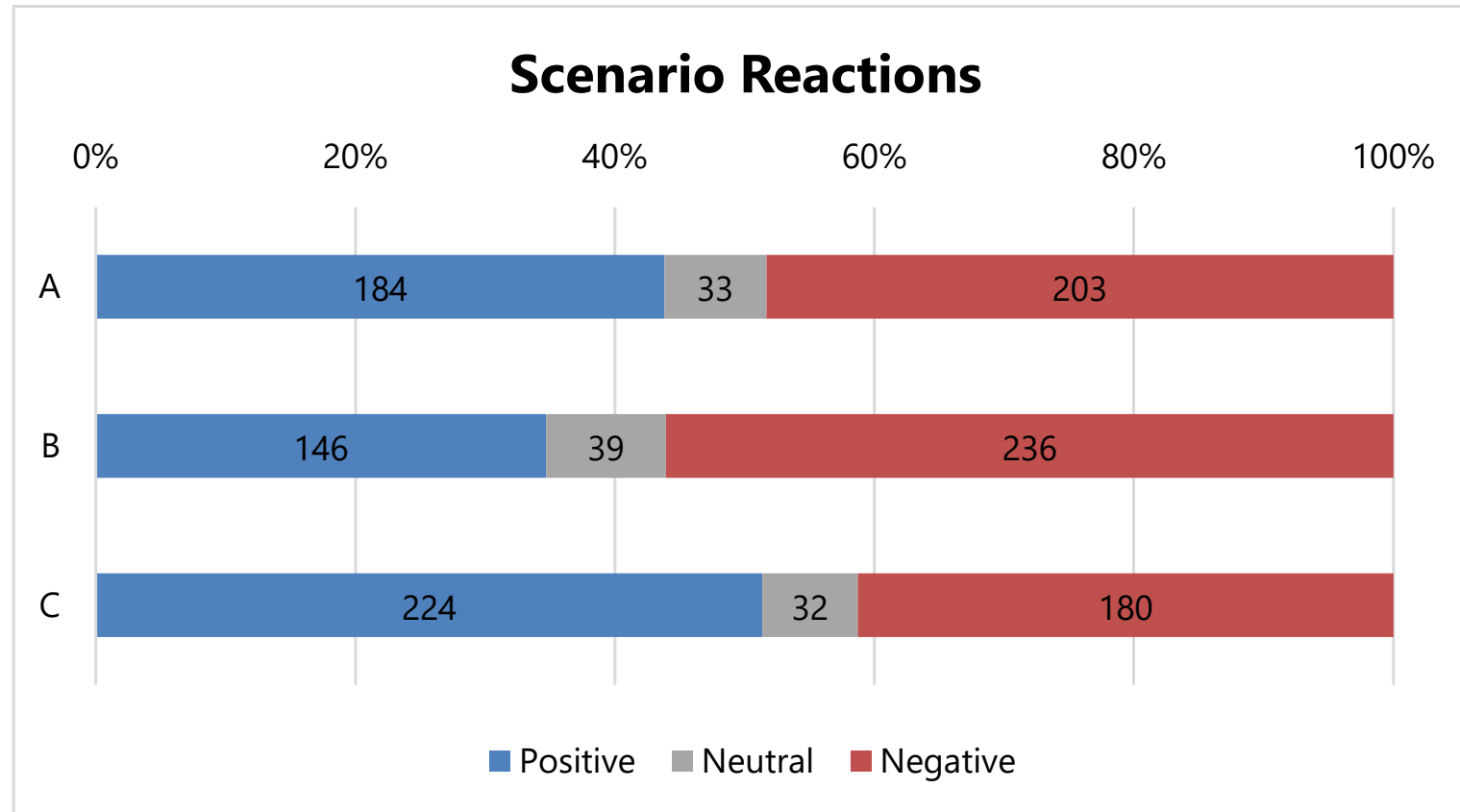
Students Moved	Total
Elementary	414
Middle	93
High	124

Scenario C Comment Sentiment



► COMMENT SENTIMENT

Overall	A	B	C
Positive	184	146	224
Neutral	33	39	32
Negative	203	236	180



► COMMENT SENTIMENT

Belair Elementary	A	B	C
Positive	24	9	24
Neutral	4	4	5
Negative	19	34	16

Lawson Elementary	A	B	C
Positive	70	57	6
Neutral	4	6	1
Negative	8	19	77

South Elementary	A	B	C
Positive	4	3	4
Neutral	1	1	2
Negative	3	5	2

Callaway Hills Elementary	A	B	C
Positive	8	5	8
Neutral	4	2	5
Negative	8	12	5

Moreau Heights Elementary	A	B	C
Positive	7	1	5
Neutral	0	3	0
Negative	1	5	3

Thorpe Gordon Elementary	A	B	C
Positive	3	0	2
Neutral	1	0	0
Negative	0	4	2

Cedar Hill Elementary	A	B	C
Positive	5	7	5
Neutral	3	3	5
Negative	14	12	13

North Elementary	A	B	C
Positive	6	21	28
Neutral	2	1	2
Negative	35	17	7

West Elementary	A	B	C
Positive	9	6	72
Neutral	3	7	5
Negative	66	60	7

East Elementary	A	B	C
Positive	1	1	0
Neutral	1	0	1
Negative	1	3	1

Pioneer Trail Elementary	A	B	C
Positive	15	8	14
Neutral	4	6	3
Negative	10	14	14

Southwest Early Childhood Center	A	B	C
Positive	3	1	3
Neutral	0	0	1
Negative	2	4	1

Thomas Jefferson Middle	A	B	C
Positive	84	60	90
Neutral	14	19	11
Negative	79	101	88

Lewis & Clark Middle	A	B	C
Positive	17	12	27
Neutral	4	5	5
Negative	23	32	11

Capital City High	A	B	C
Positive	69	50	87
Neutral	13	14	9
Negative	73	97	67

Jefferson City High	A	B	C
Positive	9	9	29
Neutral	4	1	5
Negative	32	43	13

► RESPONSE SUMMARY

Overall Summary

- Some people are unhappy with any changes, regardless of who is impacted- would prefer to keep things the same
- Grandfathering is highly desirable
- Some mention of 5th and/or 6th grade buildings to alleviate over-utilizations
- Cedar Hill area families (especially those living close to Cedar Hill ES) would like to attend TJ & CCHS (proximity reasons)
- Class size concerns (student to teacher ratio, not necessarily utilization)
- Transfer policy may need to be addressed
- Proximity is highly valued

Scenario A

- Feeder split at West is a concern/unpopular
- Changes to North & Callaway Hills are unpopular
 - Majority of negative comments were regarding West feeder split & change to Callaway County elementary schools
- The changes between North & Callaway Hills create further distances travelled for students
- Like that Callaway County stays together for MS/HS
- Many said that this scenario was the least disruptive
- Concern that some buildings may still be crowded
- Cedar Hill to South is unpopular move

Scenario B

- Proximity/transportation concerns
- Splitting North & Callaway Hills for MS & HS is not desirable for Callaway County portion of District
- Concerns over the number of students impacted
- Balanced utilizations & longevity of plan are good

Scenario C

- Positive feedback from West families, negative feedback from Covington Gardens families
 - Covington Gardens would prefer to stay at Lawson/TJ/CCHS for proximity reasons
 - Only adding students to West ES
- Like that Callaway County stays together for MS/HS
- Community members appreciate the lack of feeder splits
- West side schools can grow
- Many said that this scenario was the least disruptive

► BOUNDARY ADVISORY COMMITTEE
BOARD GUIDELINE MATRIX

Board Guidelines: Based on 22-23 School Year (not long term)									Additional Metrics			
Scenario:	Minimize disruption (short term)	Keep siblings together	Balanced Enrollment	Average Balanced SES	Transportation	Keep Neighborhoods together	Feeder Splits?	Follow natural boundaries	# of schools impacted	# of students impacted	Utilization Ranges	Socioeconomic Ranges
Scenario A	2	Based on grandfathering provisions	1	2	All scenarios are feasible for transportation	Neighborhood lines are subjective	2	2	13	536	ES: 67% - 91% MS: 97% - 100% HS: 77% - 81%	ES: 45% - 79% MS: 53% - 58% HS: 43% - 46%
Scenario B	4		1	1			1	2	15 (all)	1,079	ES: 69% - 90% MS: 97% - 101% HS: 76% - 82%	ES: 41% - 80% MS: 55% - 56% HS: 43% - 46%
Scenario C	3		3	2			1	2	15 (all)	631	ES: 69% - 92% MS: 95% - 102% HS: 73% - 86%	ES: 41% - 80% MS: 54% - 58% HS: 44% - 46%

Options:
1
2
3
4
5

Aligns with Criteria

|

|

|

Does not Align with Criteria