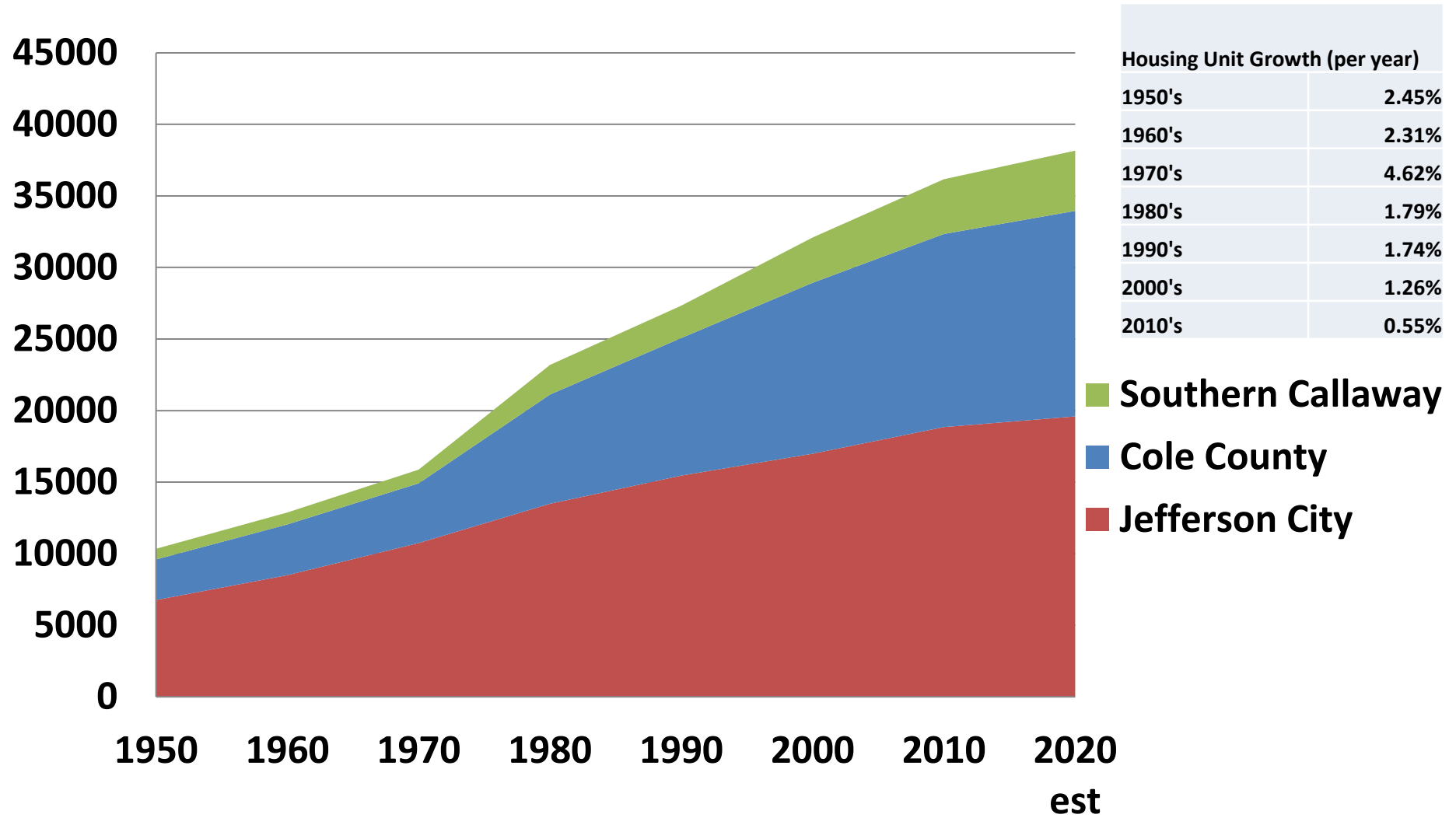


# Jefferson City Area Housing Unit Growth

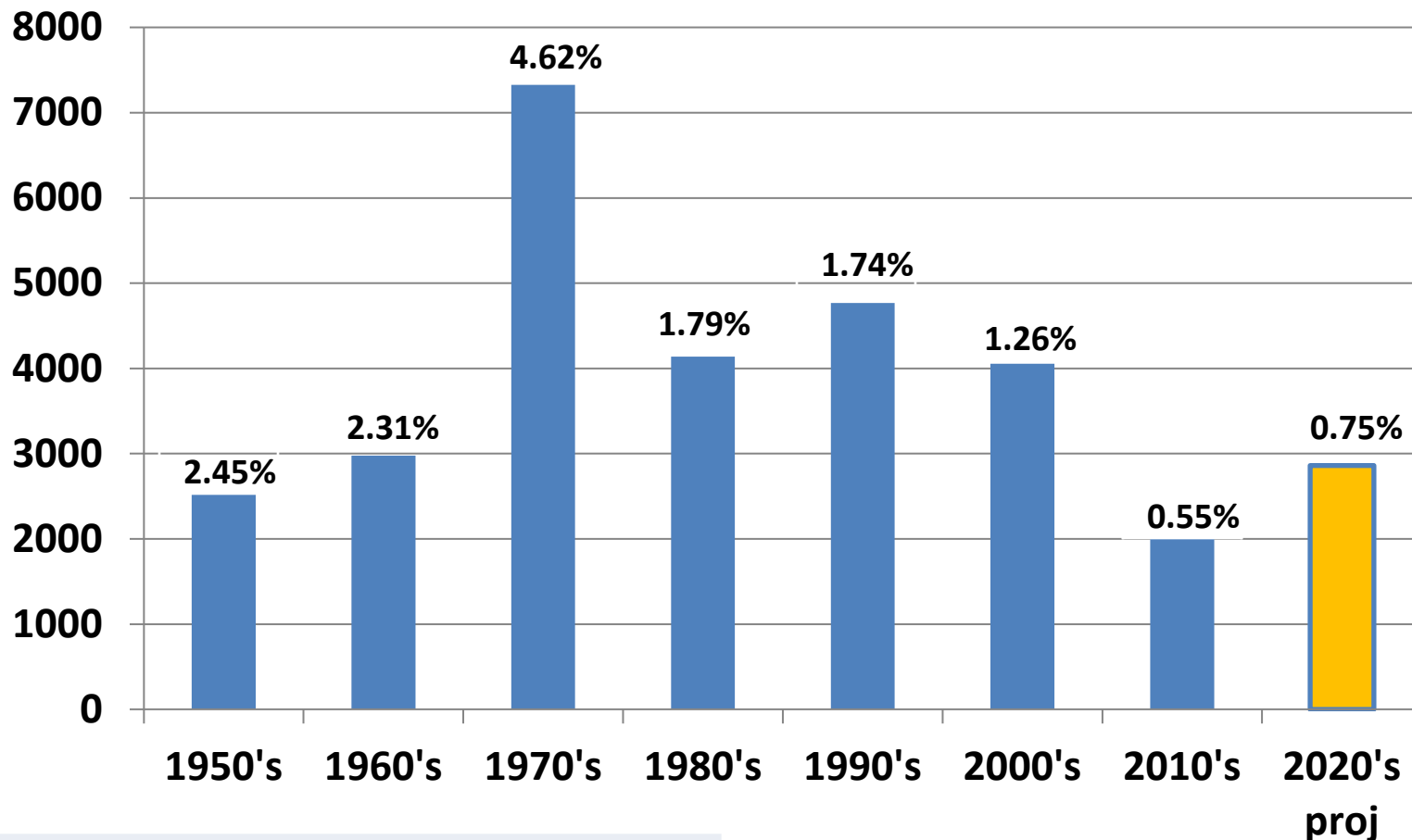
(Jefferson City, Cole County, and Southern Callaway County)

Source: US Census data (except 2020 estimate)



# Projected 10-yr Housing Growth

(Number of Units Per Decade/Avg Growth Rate Per Year)



## Extrapolated Location of 2020's Growth

Jefferson City	1052
Cole County	1270
Southern Callaway	541

# Highest Areas of Residential Development Potential



# Pending Residential Developments

(staff estimate of residential units/lots to be built on a roughly 5 year timeline)

