



BACKGROUND DATA

ATTENDANCE AREA CHANGES

► BACKGROUND DATA

UNDERSTANDING

Enrollment – The number of students attending a school.

Live = students that reside within the boundary

Attend = students attending that facility, regardless of residence

Capacity – The number of students a facility can serve, this is a fluid number that is impacted by programs within each building.

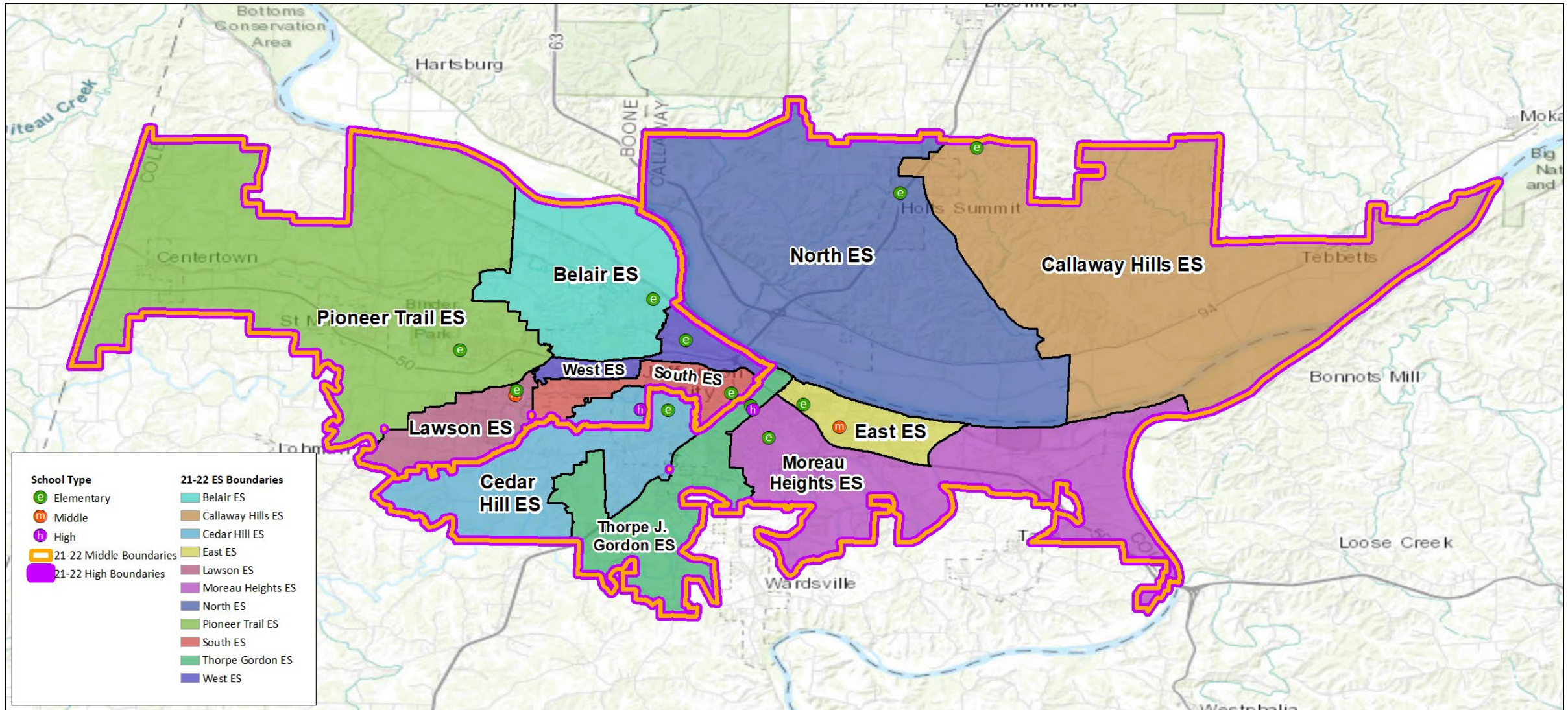
Utilization – Number of students divided by the capacity of the building

Low SES % – The percentage of students coming from lower socio-economic backgrounds, measured using student-level free/reduced lunch data

Planning Unit – an arbitrary subset of a boundary that is used to aggregate data to quickly illustrate the impacts of potential boundary changes.

► BACKGROUND DATA

21-22 ATTENDANCE AREAS

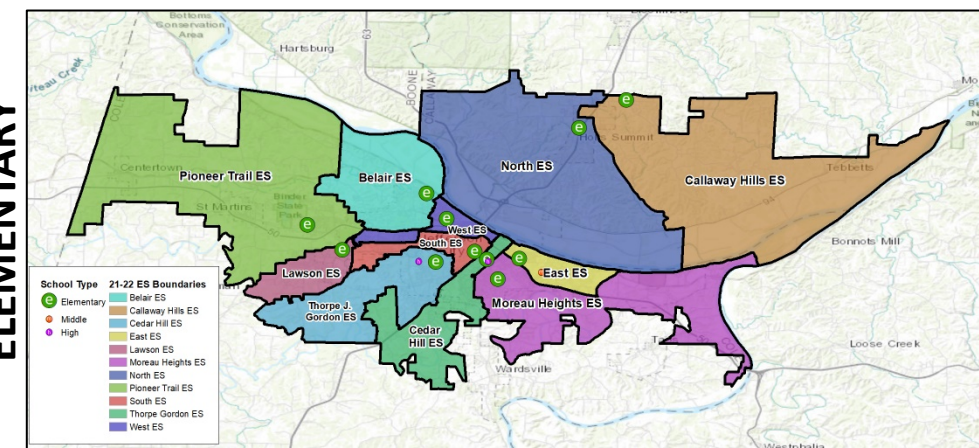


► BACKGROUND DATA

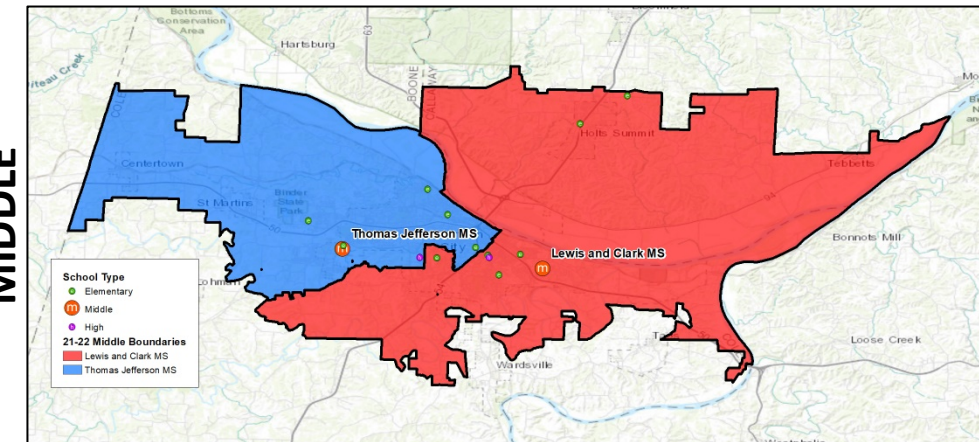
21-22 ATTENDANCE AREAS

School	Capacity	Live Enrollment	Live Utilization	Live Low SES %
Belair Elementary School	431	433	100%	46%
Callaway Hills Elementary School	298	238	80%	99%
Cedar Hill Elementary School	429	322	75%	41%
East Elementary School	387	266	69%	99%
Clarence Lawson Elementary School	471	385	82%	56%
Moreau Heights Elementary School	437	291	67%	62%
North Elementary School	451	413	92%	42%
Pioneer Trail Elementary School	538	501	93%	51%
South Elementary School	340	261	77%	95%
Thorpe Gordon Elementary School	340	300	88%	96%
West Elementary School	409	296	72%	61%
ELEMENTARY SUBTOTAL	4,531	3,706	82%	64%
Lewis & Clark Middle School	972	868	89%	59%
Thomas Jefferson Middle School	972	1,050	108%	52%
MIDDLE SUBTOTAL	1,944	1,918	99%	56%
Capital City High School	1,864	1,456	78%	44%
Jefferson City High School	1,878	1,228	65%	46%
HIGH SUBTOTAL	3,742	2,684	72%	45%

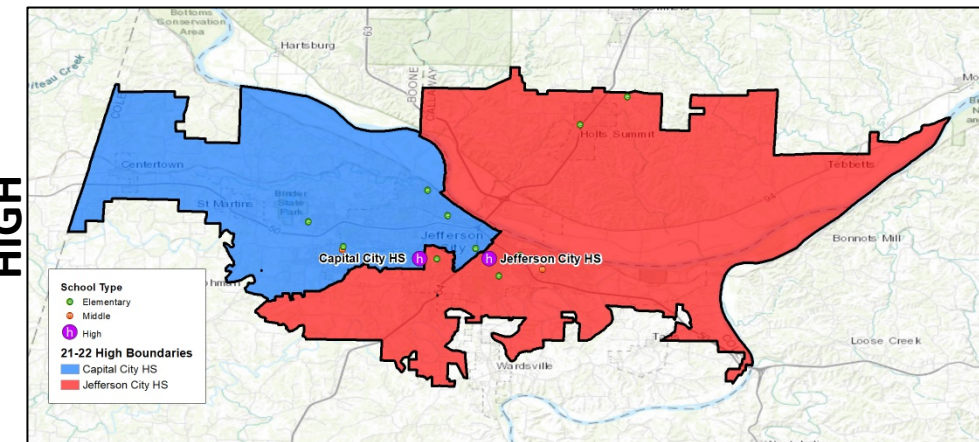
ELEMENTARY



MIDDLE

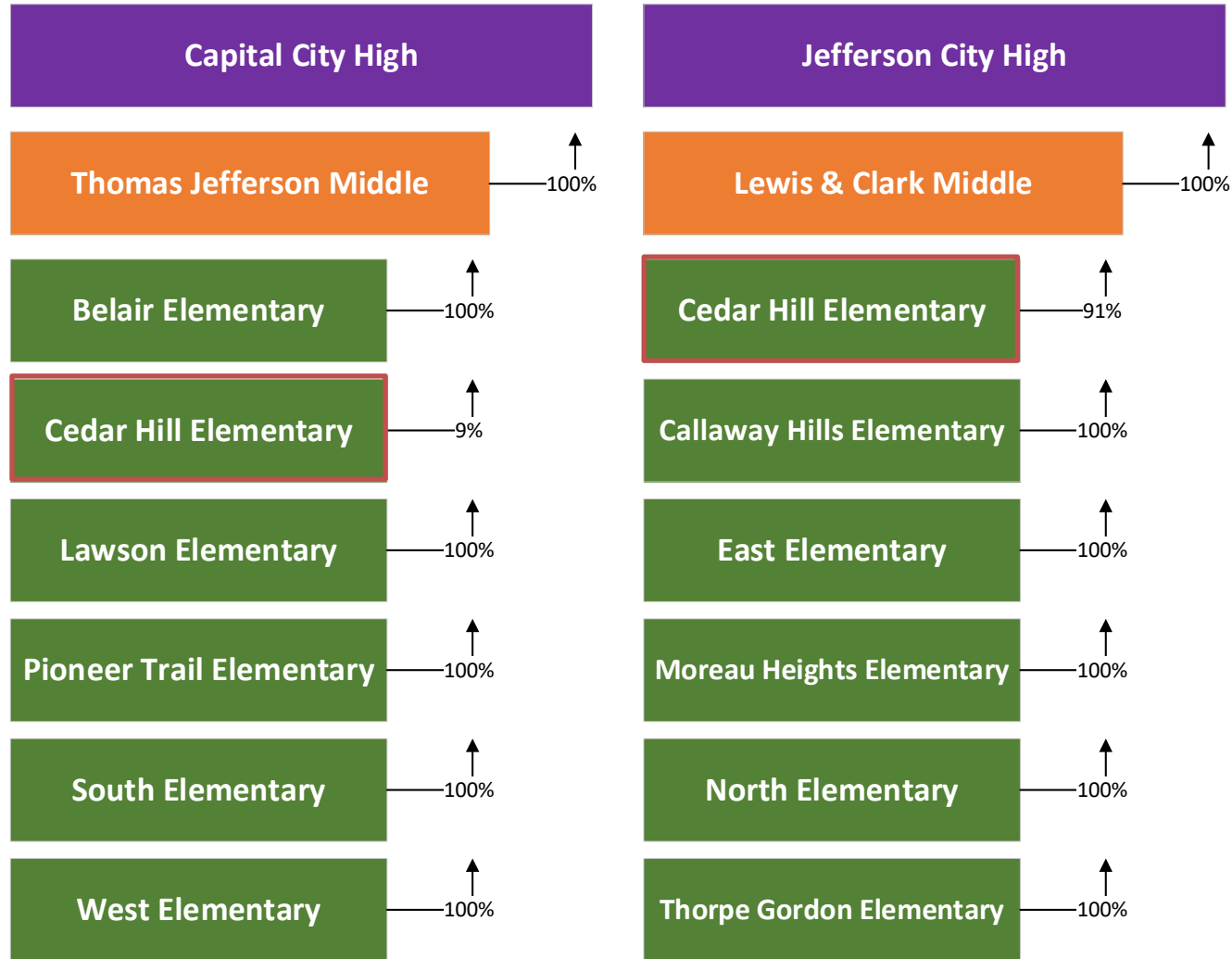


HIGH

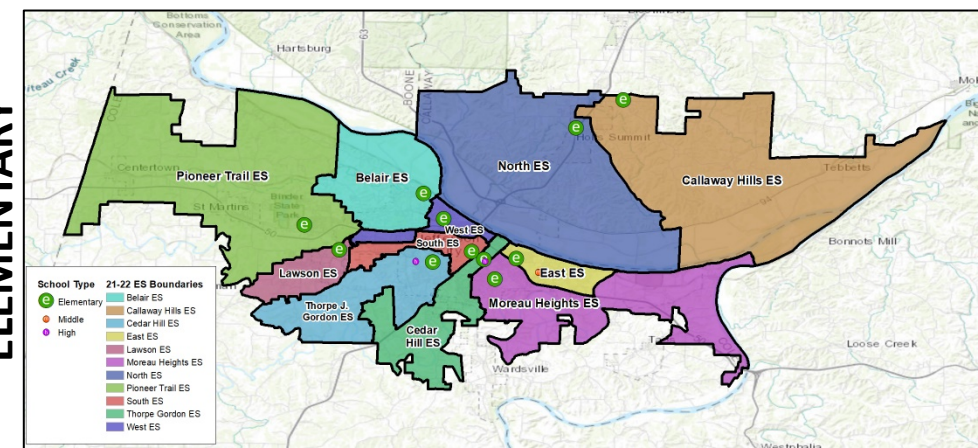


► BACKGROUND DATA

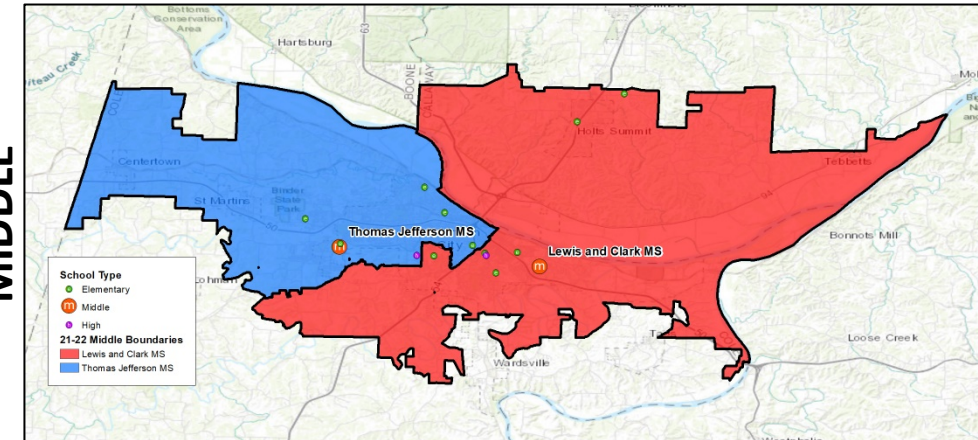
FEEDERS



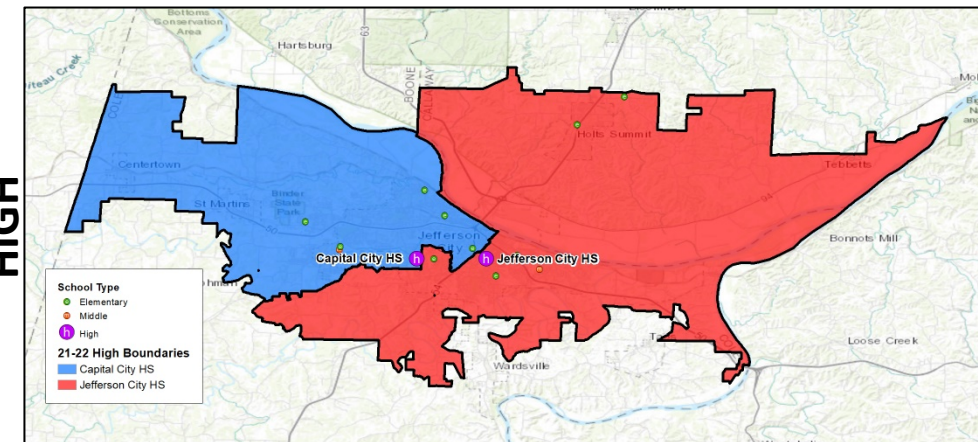
ELEMENTARY



MIDDLE



HIGH



► BACKGROUND DATA

LIVE/ATTEND ANALYSIS

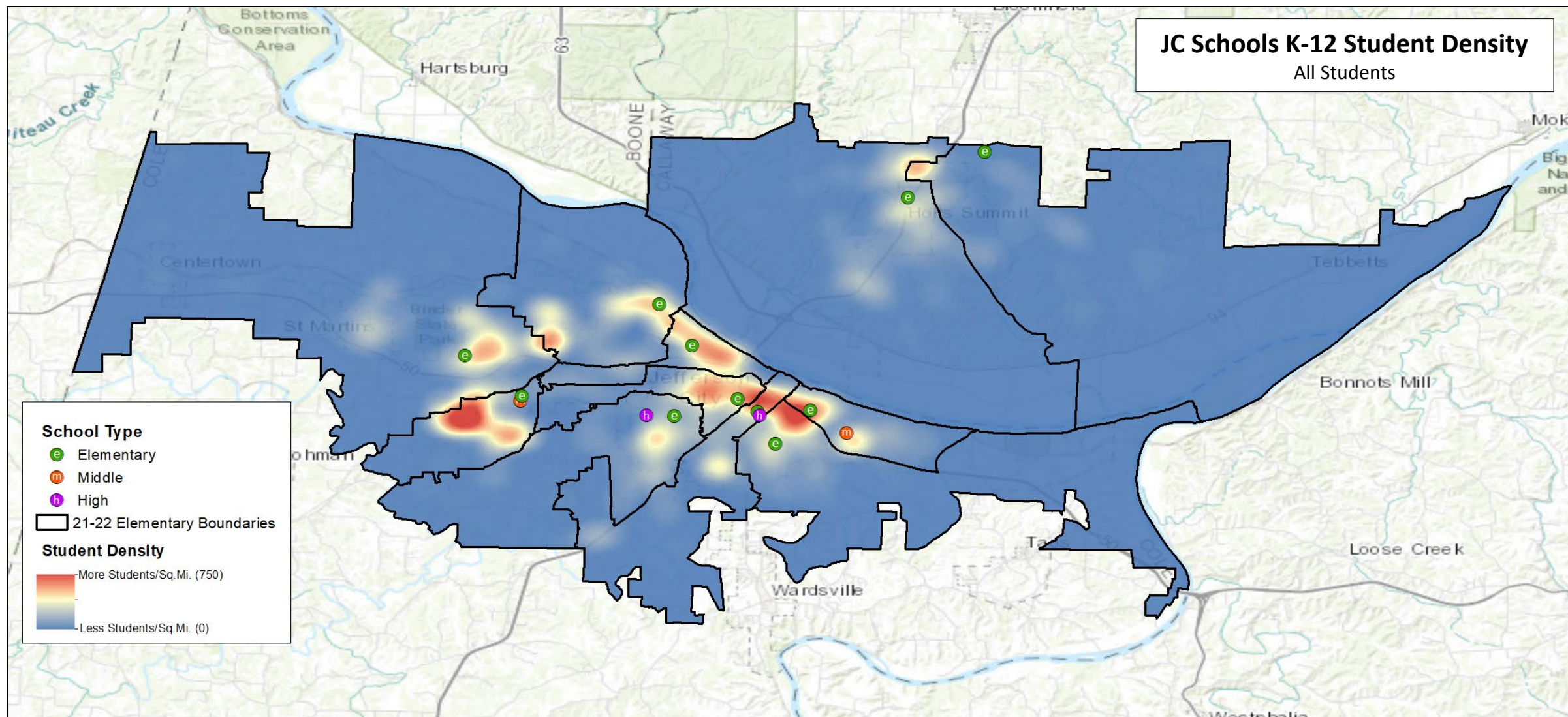
2021-22 Live/Attend Analysis Elementary School (K-5)		Attend												Transfer Out	% Transfer Out
		Belair Elementary School	Callaway Hills Elementary School	Cedar Hill Elementary School	East Elementary School	Clarence Lawson Elementary School	Moreau Heights Elementary School	North Elementary School	Pioneer Trail Elementary School	South Elementary School	Thorpe Gordon Elementary School	West Elementary School	TOTAL		
Live	Belair ES	421	-	-	1	1	3	1	3	2	-	1	433	12	3%
	Callaway Hills ES	-	227	-	2	4	1	-	-	1	3	-	238	11	5%
	Cedar Hill ES	2	-	315	-	2	-	-	-	2	-	1	322	7	2%
	East ES	-	-	-	257	5	3	-	-	-	1	-	266	9	3%
	Lawson ES	-	-	3	-	376	2	-	3	-	-	1	385	9	2%
	Moreau Heights ES	-	1	1	1	1	286	-	1	-	-	-	291	5	2%
	North ES	-	5	-	-	4	1	403	-	-	-	-	413	10	2%
	Pioneer Trail ES	7	-	3	-	7	3	1	474	3	-	3	501	27	5%
	South ES	-	-	1	1	3	2	-	-	250	3	1	261	11	4%
	Thorpe Gordon ES	3	-	4	-	6	2	-	1	5	279	-	300	21	7%
	West ES	1	-	-	14	3	4	-	2	1	-	271	296	25	8%
	Out of District/Unmatched	1	9	1	2	1	1	2	2	1	2	3	25	-	-
	TOTAL	435	242	328	278	413	308	407	486	265	288	281	3,731 K-5 Students		
Live & Attend	421	227	315	257	376	286	403	474	250	279	271				
Transfer In	14	15	13	21	37	22	4	12	15	9	10				
% Transfer In	3%	6%	4%	8%	9%	7%	1%	2%	6%	3%	4%				

2021-22 Live/Attend Analysis Middle School (6-8)		Attend			Transfer Out	% Transfer Out
		Lewis & Clark Middle School	Thomas Jefferson Middle School	TOTAL		
Live	Lewis and Clark MS	856	12	868	12	1%
	Thomas Jefferson MS	18	1,032	1,050	18	2%
	Out of District/Unmatched	8	3	11	-	-
	TOTAL	882	1,047	1,929 6-8 Students		
Live & Attend		856	1,032			
Transfer In		26	15			
% Transfer In		3%	1%			

2021-22 Live/Attend Analysis High School (9-12)		Attend			Transfer Out	% Transfer Out
		Capital City High School	Jefferson City High School	TOTAL		
Live	Capital City HS	1,383	73	1,456	73	5%
	Jefferson City HS	54	1,174	1,228	54	4%
	Out of District/Unmatched	5	21	26	-	-
	TOTAL	1,442	1,268	2,710 9-12 Students		
Live & Attend		1,383	1,174			
Transfer In		59	94			
% Transfer In		4%	7%			

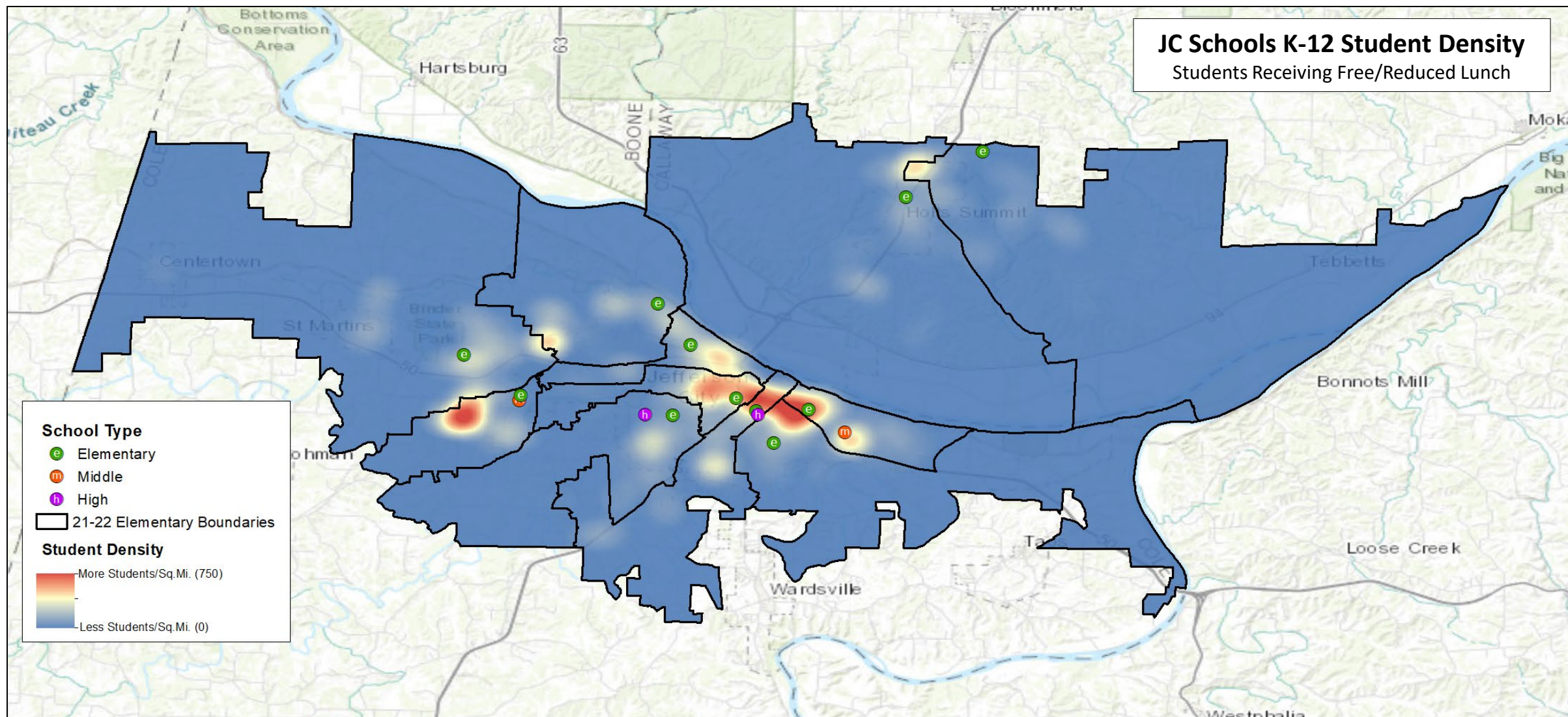
► BACKGROUND DATA

DENSITY MAPS



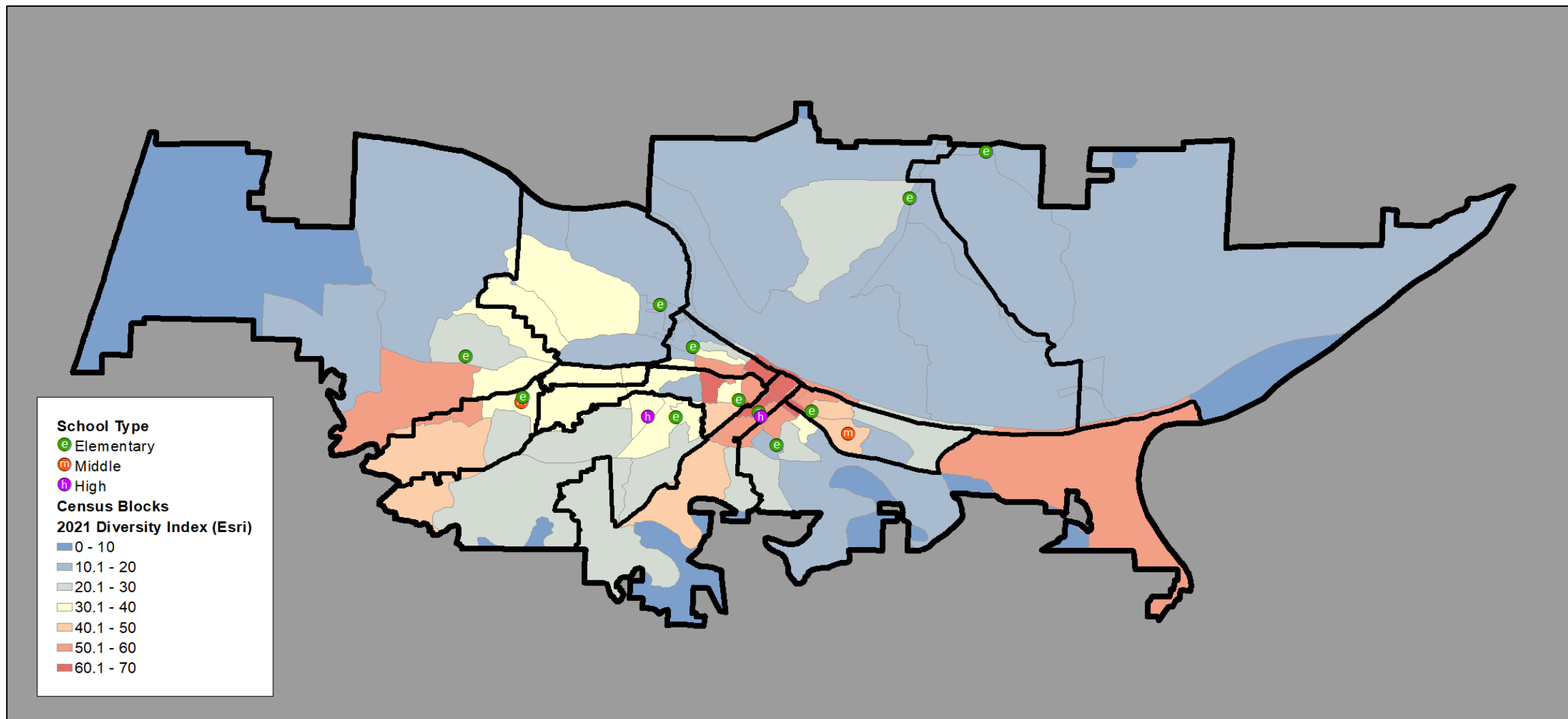
► BACKGROUND DATA

DENSITY MAPS



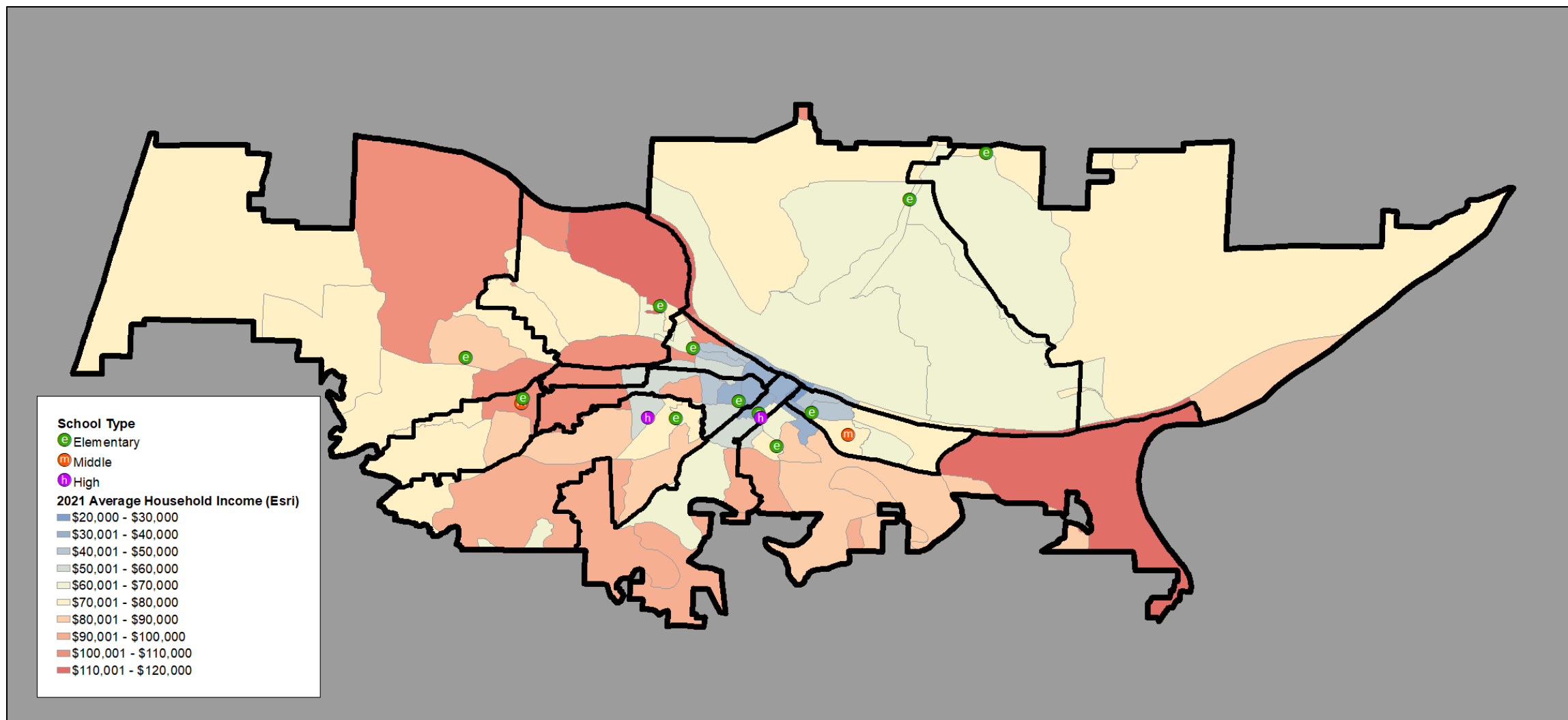
► BACKGROUND DATA

2020 CENSUS DEMOGRAPHICS



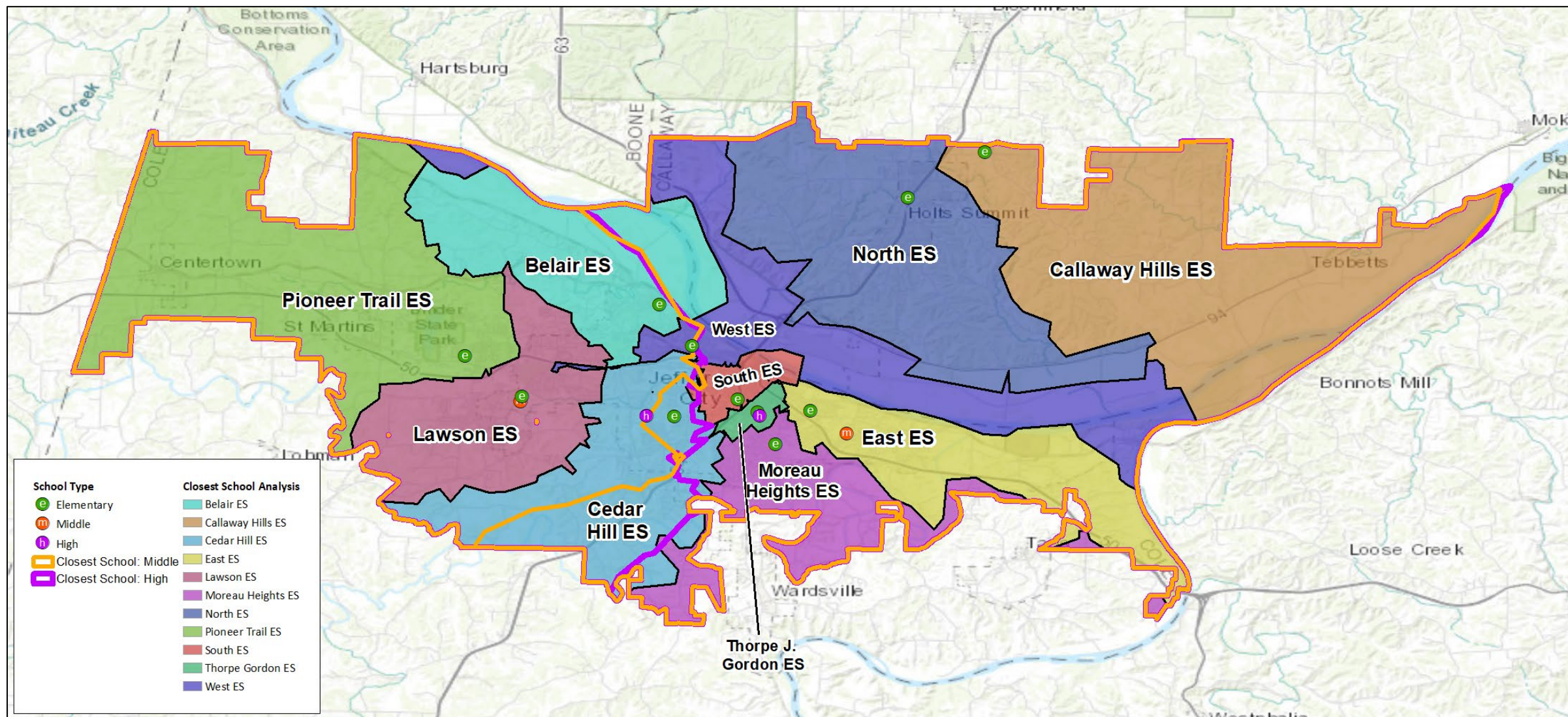
► BACKGROUND DATA

2020 CENSUS DEMOGRAPHICS



► BACKGROUND DATA

CLOSEST SCHOOL ANALYSIS

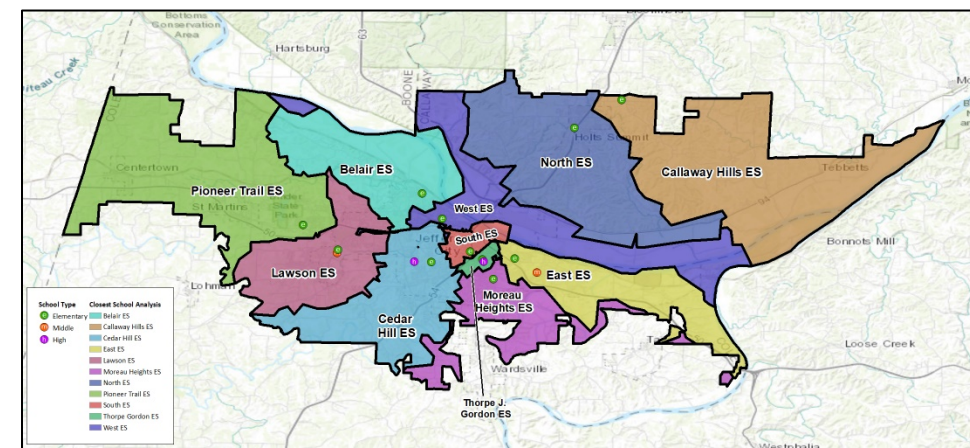


► BACKGROUND DATA

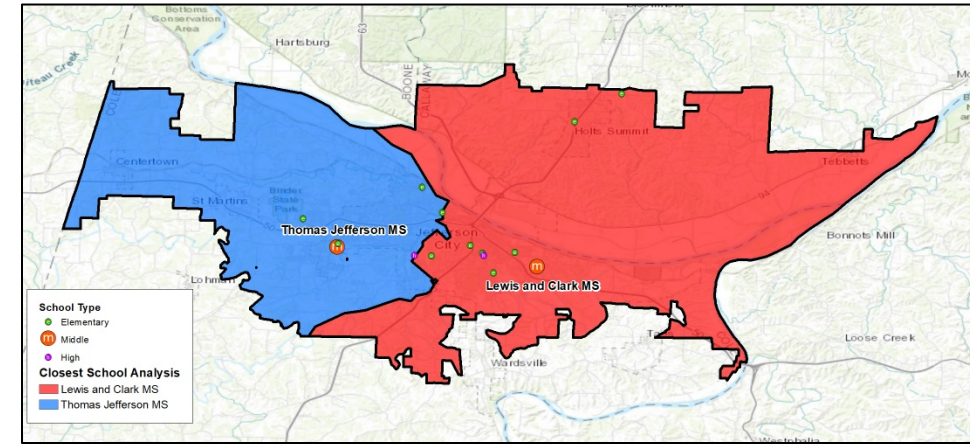
CLOSEST SCHOOL ANALYSIS

School	Capacity	Closest School Enrollment	Closest School Utilization	Closest School Low SES %
Belair Elementary School	431	262	61%	40%
Callaway Hills Elementary School	298	114	38%	99%
Cedar Hill Elementary School	429	462	108%	60%
East Elementary School	387	389	101%	92%
Clarence Lawson Elementary School	471	712	151%	54%
Moreau Heights Elementary School	437	217	50%	58%
North Elementary School	451	533	118%	55%
Pioneer Trail Elementary School	538	409	76%	51%
South Elementary School	340	258	76%	93%
Thorpe Gordon Elementary School	340	153	45%	98%
West Elementary School	409	197	48%	54%
ELEMENTARY SUBTOTAL	4,531	3,706	82%	64%
Lewis & Clark Middle School	972	1,038	107%	62%
Thomas Jefferson Middle School	972	880	91%	47%
MIDDLE SUBTOTAL	1,944	1,918	99%	56%
Capital City High School	1,864	1,396	75%	39%
Jefferson City High School	1,878	1,288	69%	51%
HIGH SUBTOTAL	3,742	2,684	72%	45%

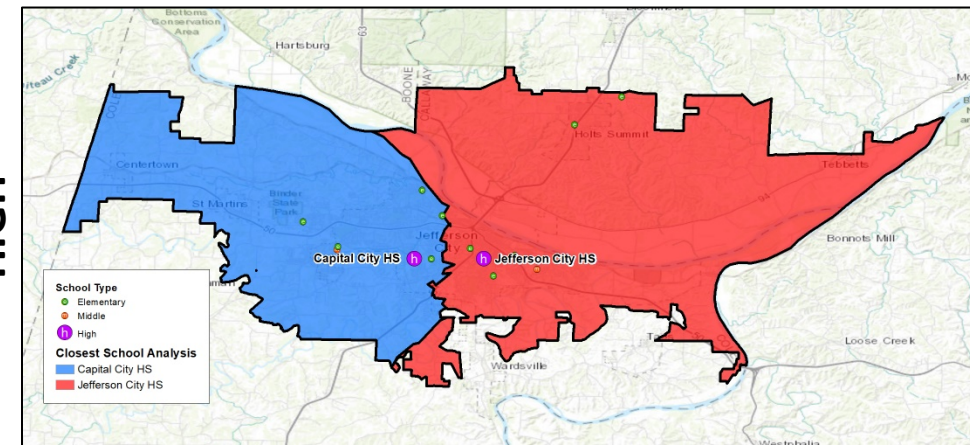
ELEMENTARY



MIDDLE

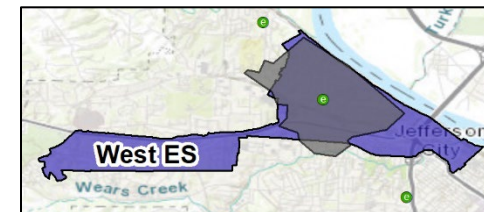
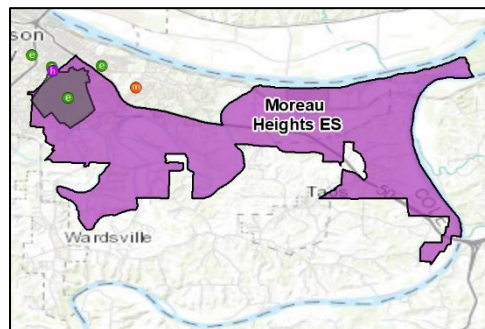
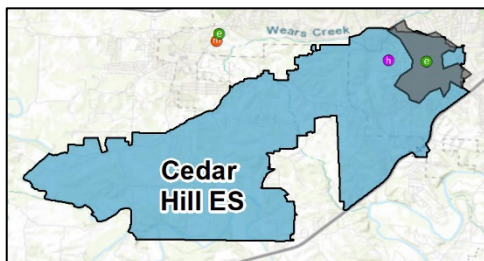
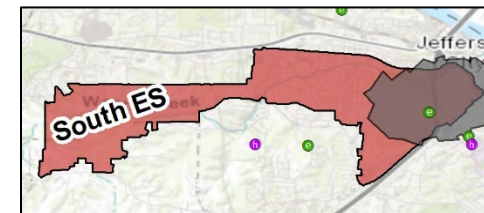
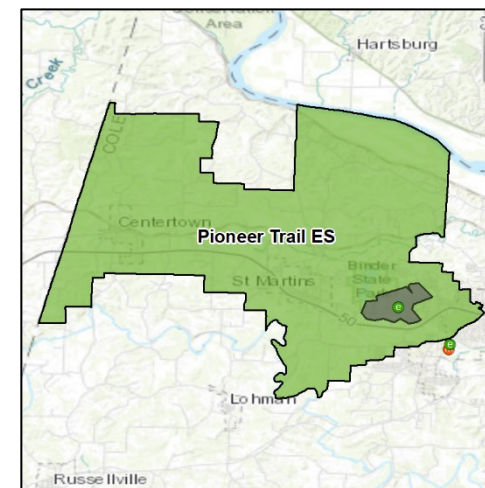
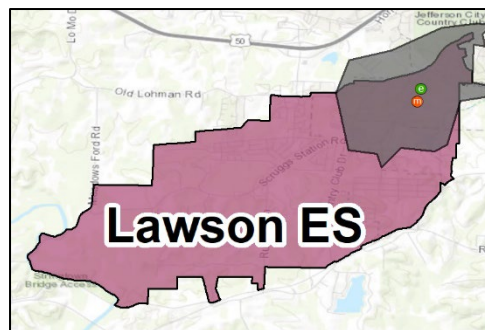
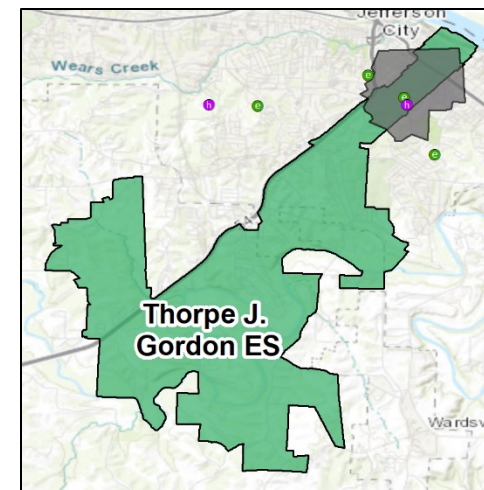
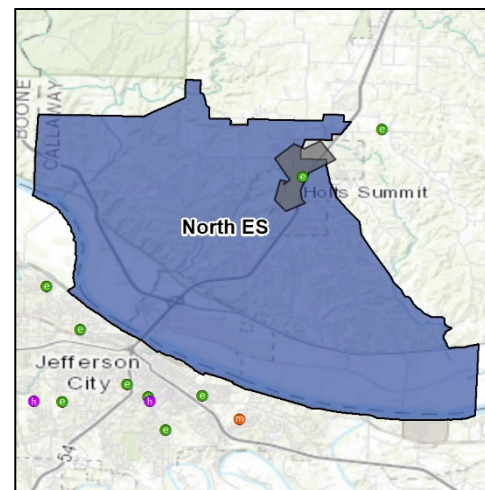
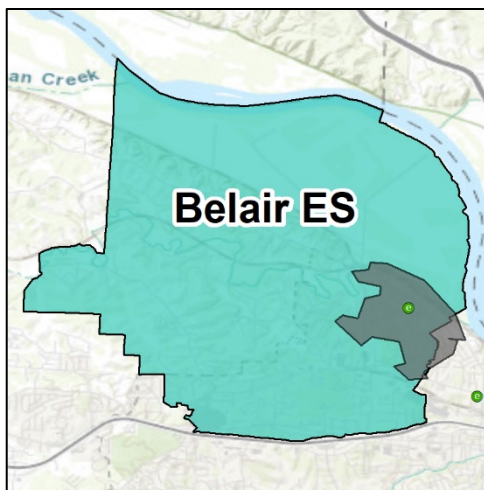


HIGH



► BACKGROUND DATA

1 MILE WALK ZONES



► BACKGROUND DATA

1 MILE WALK ZONES

