



COOPERATIVE STRATEGIES

COMPLETE FINANCIAL & DEMOGRAPHIC PLANNING FOR EDUCATION

**IDAHO FALLS DISTRICT 91
BOUNDARY COMMITTEE MEETING #2**

February 28, 2023

► GUIDELINES

To the greatest extent possible:

- Keep neighborhoods together in support of the idea of neighborhood schools
- Keep boundaries contiguous to avoid islands
- Consider growth and future development
- Consider school demographics
- Consider bussing efficiencies and safe routes to school

Considerations:

- There is no prioritization of guidelines.
- Some may be in direct contradiction of others.
- The intent is to provide a measurable way to compare options to each other.

Why are boundaries necessary?

- Prevent and eliminate overcrowding
- Keep distances traveled by students reasonable
- Allow campuses to house students safely and provide adequate services to all students

► BOUNDARY COMMITTEE

Temple View ES & AH Bush ES

Balance future growth among buildings

Edgemont Gardens ES & Sunnyside ES

Provide utilization relief to Sunnyside ES, balance future growth, remain mindful of future south side elementary

Committee's Charge:

- Remain objective throughout the process, and consider the needs of all students within the District
- Review background data
- Draw initial boundary scenarios
 - Consider boundary change guidelines
- Review community feedback, use this to assist in crafting a recommendation

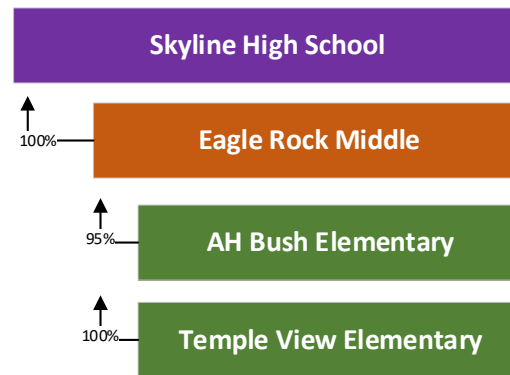
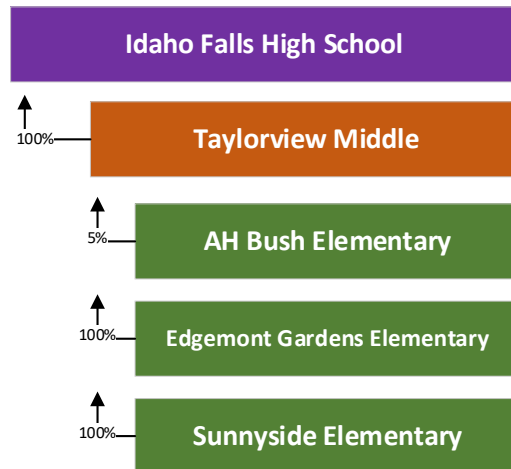
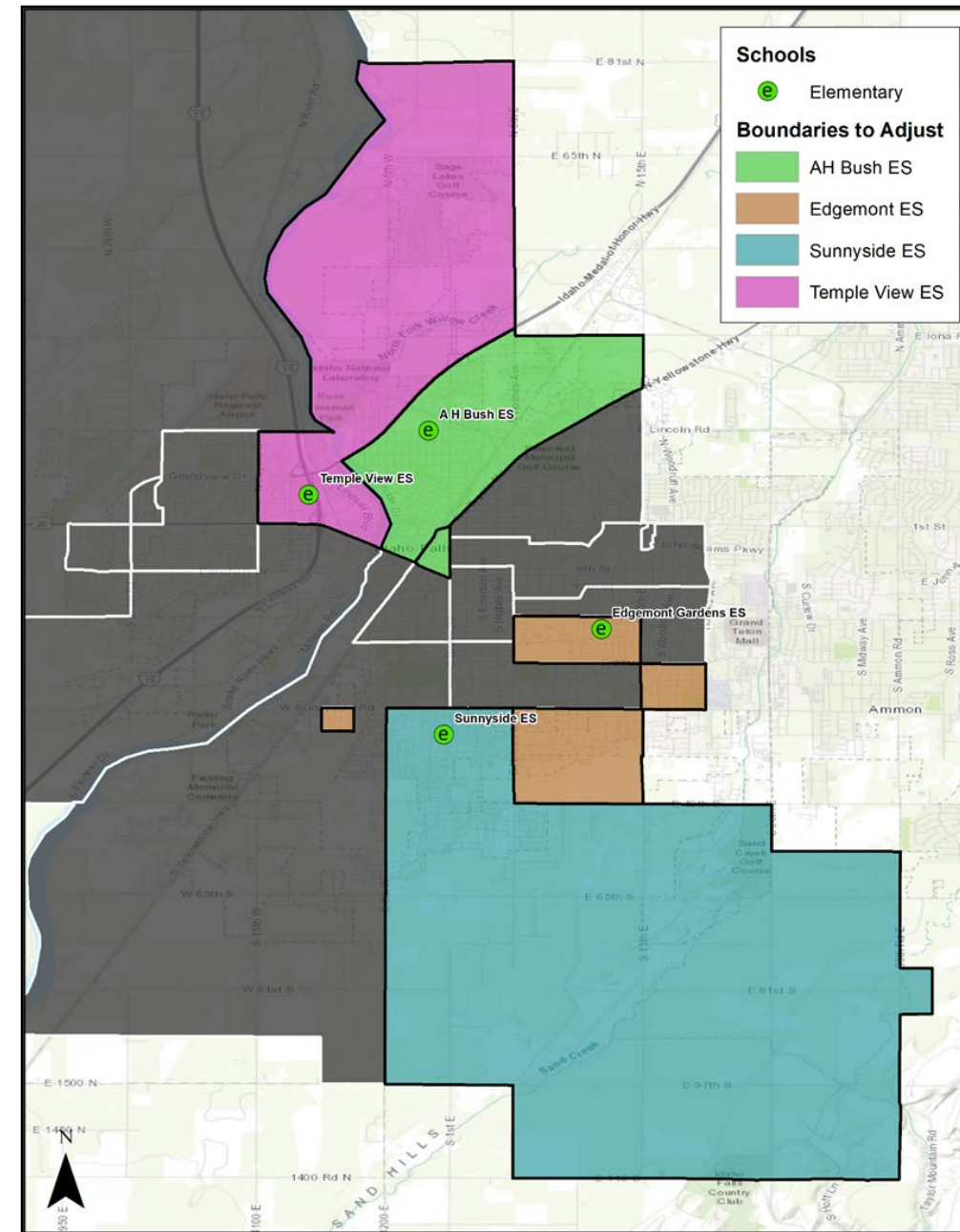


**SCENARIOS:
BUSH & TEMPLE VIEW**

▶ BACKGROUND DATA

CURRENT STATE

School	Live-In Enrollment	Program Capacity	Program Utilization	5-Year Projected (27-28)	5-Year Utilization
A.H. Bush Elementary	303	507	60%	316	62%
Temple View Elementary	350	410	85%	343	84%



► SCENARIO 1

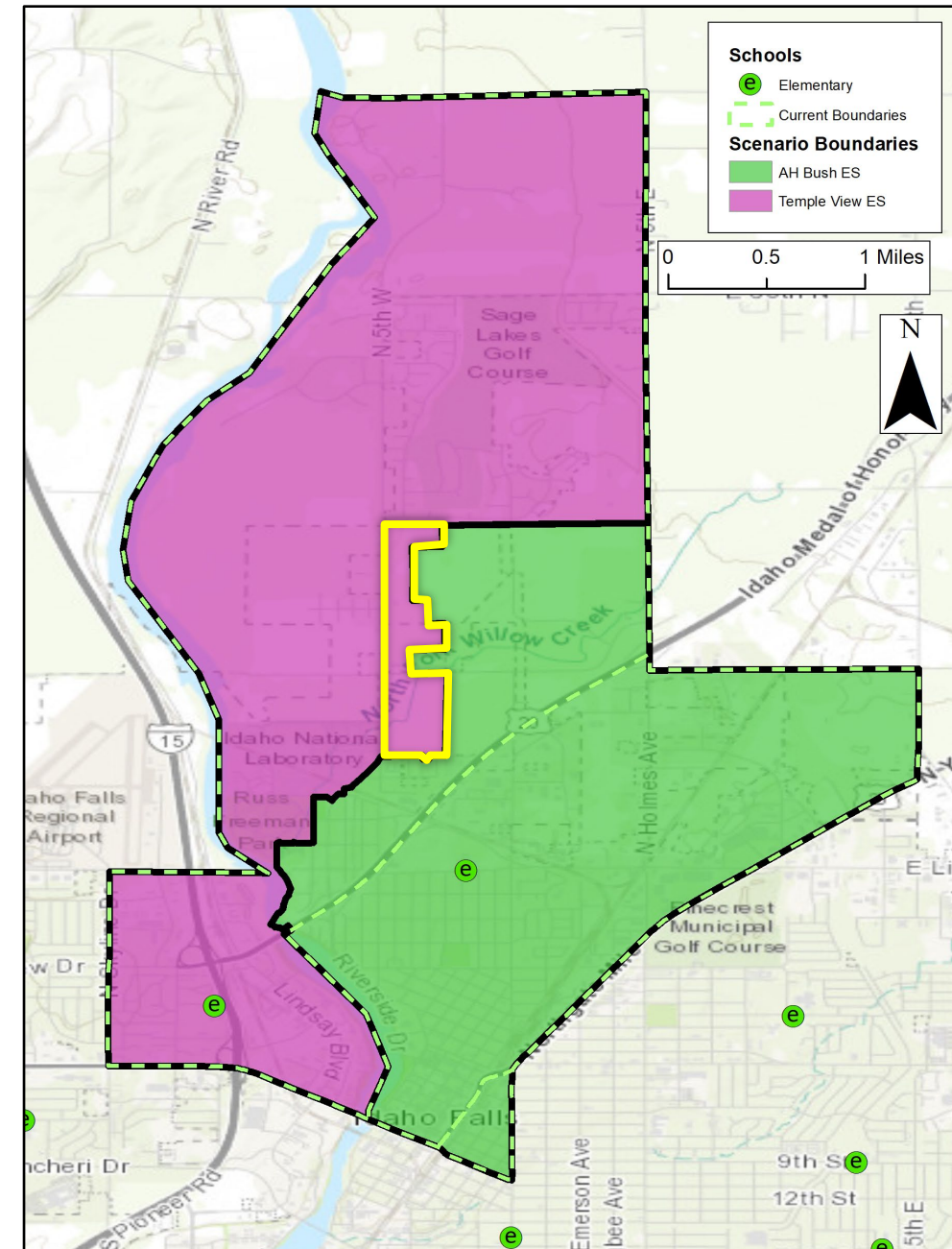
CURRENT							
School	Capacity	Live In Enrollment	Utilization	Grade Adv +1	Grade Adv +2	Grade Adv +3	Grade Adv +4
AH Bush ES	507	303	60%	61%	61%	62%	63%
Temple View ES	410	350	85%	89%	93%	96%	100%

Scenario 1							
School	Capacity	Live In Enrollment	Utilization	Grade Adv +1	Grade Adv +2	Grade Adv +3	Grade Adv +4
AH Bush ES	507	366	72%	74%	73%	75%	76%
Temple View ES	410	287	70%	74%	78%	80%	84%

Scenario will be presented to community.

One change from original: all students living along N 5th W will attend TVES for transportation purposes, impacts <5 students (shown in map in yellow)

Scenario 1: Students Moved	
KG	9
1	8
2	14
3	7
4	7
5	10
6	11
K-5 Total	55
K-6 Total	66



► SCENARIO 2

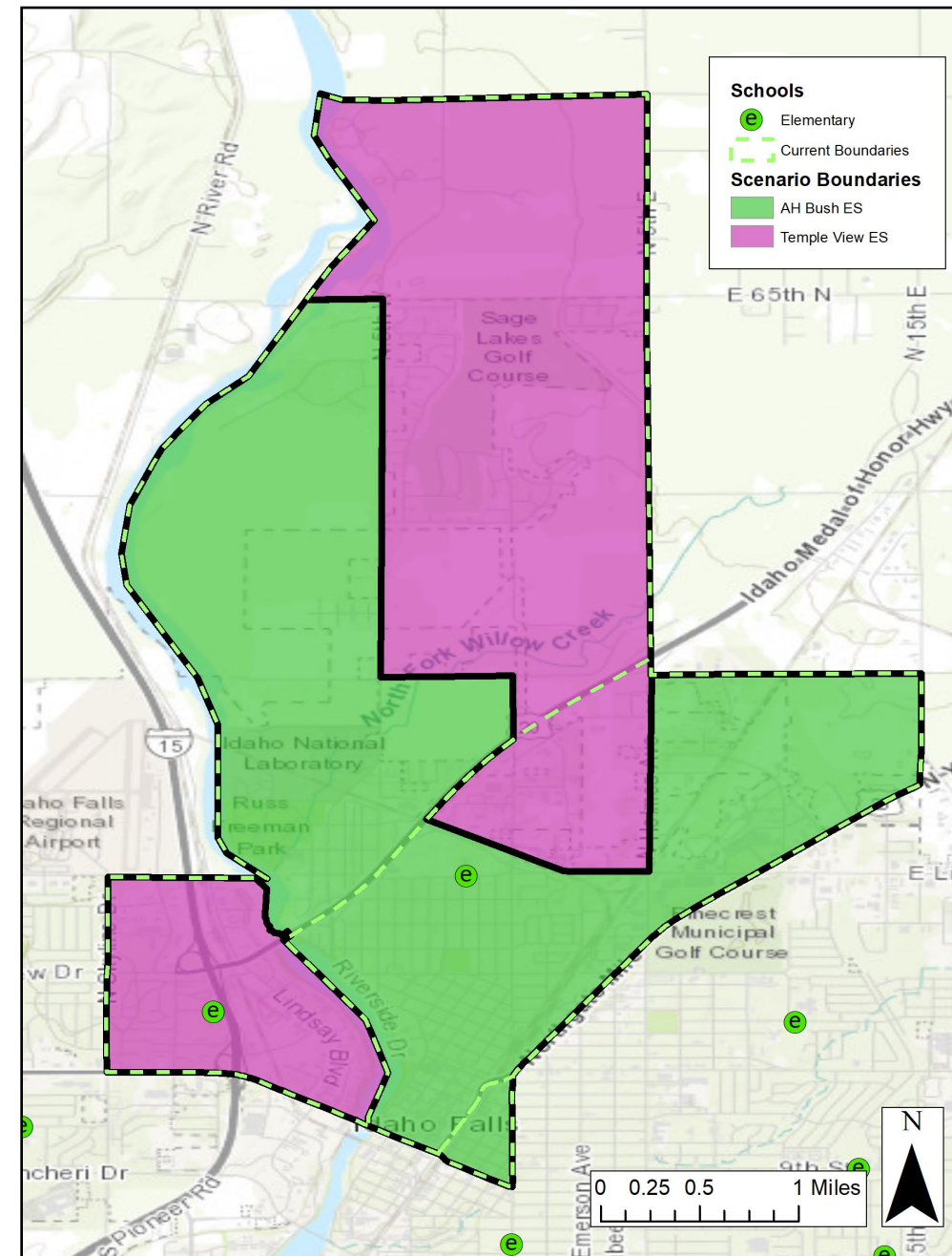
CURRENT							
School	Capacity	Live In Enrollment	Utilization	Grade Adv +1	Grade Adv +2	Grade Adv +3	Grade Adv +4
AH Bush ES	507	303	60%	61%	61%	62%	63%
Temple View ES	410	350	85%	89%	93%	96%	100%

Scenario 2							
School	Capacity	Live In Enrollment	Utilization	Grade Adv +1	Grade Adv +2	Grade Adv +3	Grade Adv +4
AH Bush ES	507	385	76%	78%	77%	79%	81%
Temple View ES	410	268	65%	69%	73%	75%	78%

Scenario will not be presented to community.

- Goes against guideline to avoid detached zones
- Moves students from Bush to TV = more students changing boundaries
- Does not make sense from transportation standpoint

Scenario 2: Students Moved	
KG	13
1	9
2	17
3	9
4	10
5	12
6	13
K-5 Total	70
K-6 Total	83



► SCENARIO 3

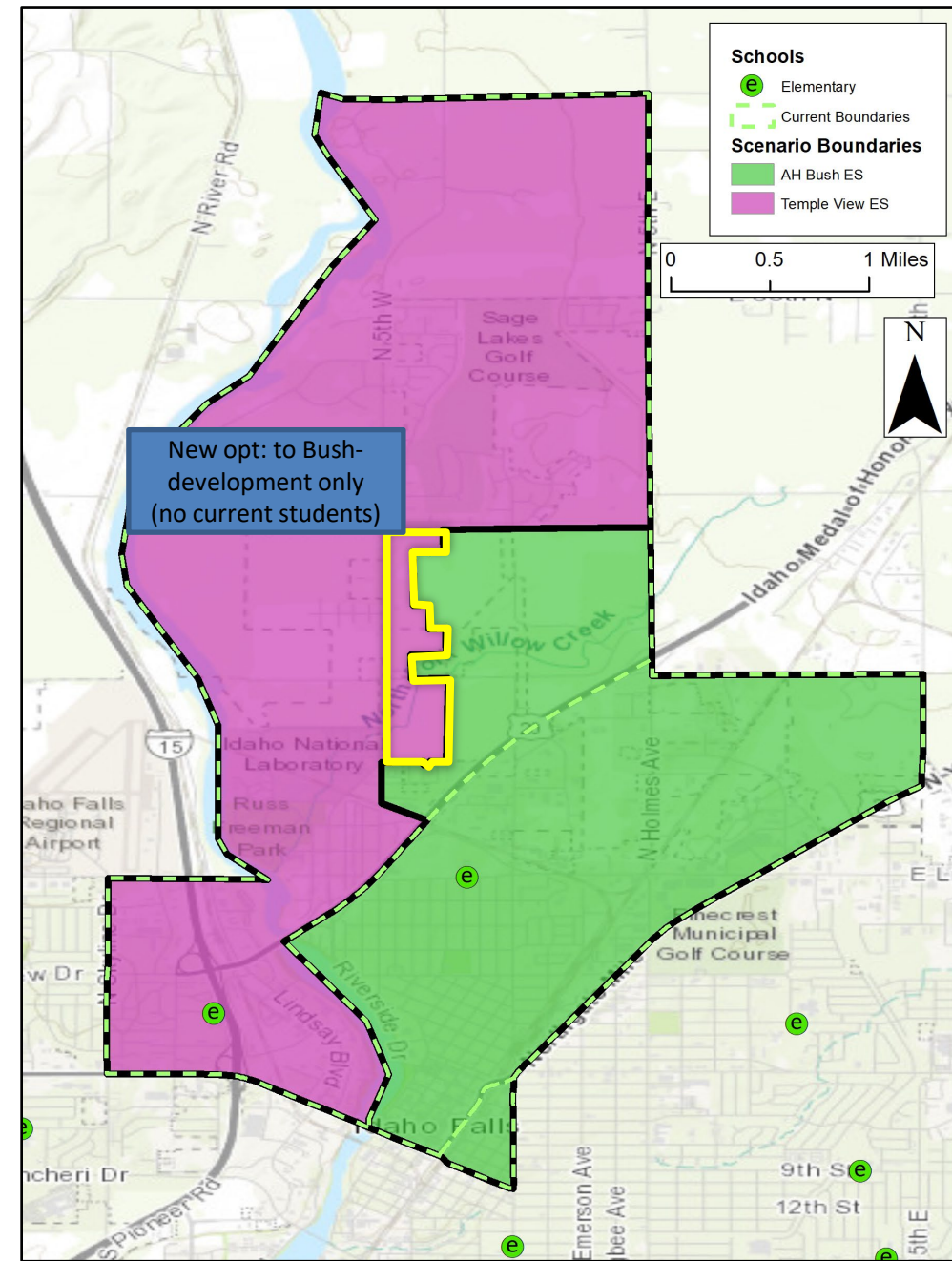
CURRENT							
School	Capacity	Live In Enrollment	Utilization	Grade Adv +1	Grade Adv +2	Grade Adv +3	Grade Adv +4
AH Bush ES	507	303	60%	61%	61%	62%	63%
Temple View ES	410	350	85%	89%	93%	96%	100%

Scenario 3							
School	Capacity	Live In Enrollment	Utilization	Grade Adv +1	Grade Adv +2	Grade Adv +3	Grade Adv +4
AH Bush ES	507	341	67%	70%	70%	72%	73%
Temple View ES	410	312	76%	78%	82%	84%	88%

Scenario will be presented to community.

One change from original: all students living along N 5th W will attend TVES for transportation purposes, impacts <5 students (shown in map in yellow)

Scenario 3: Students Moved	
KG	7
1	5
2	11
3	6
4	4
5	5
6	3
K-5 Total	38
K-6 Total	41



► SCENARIO 4

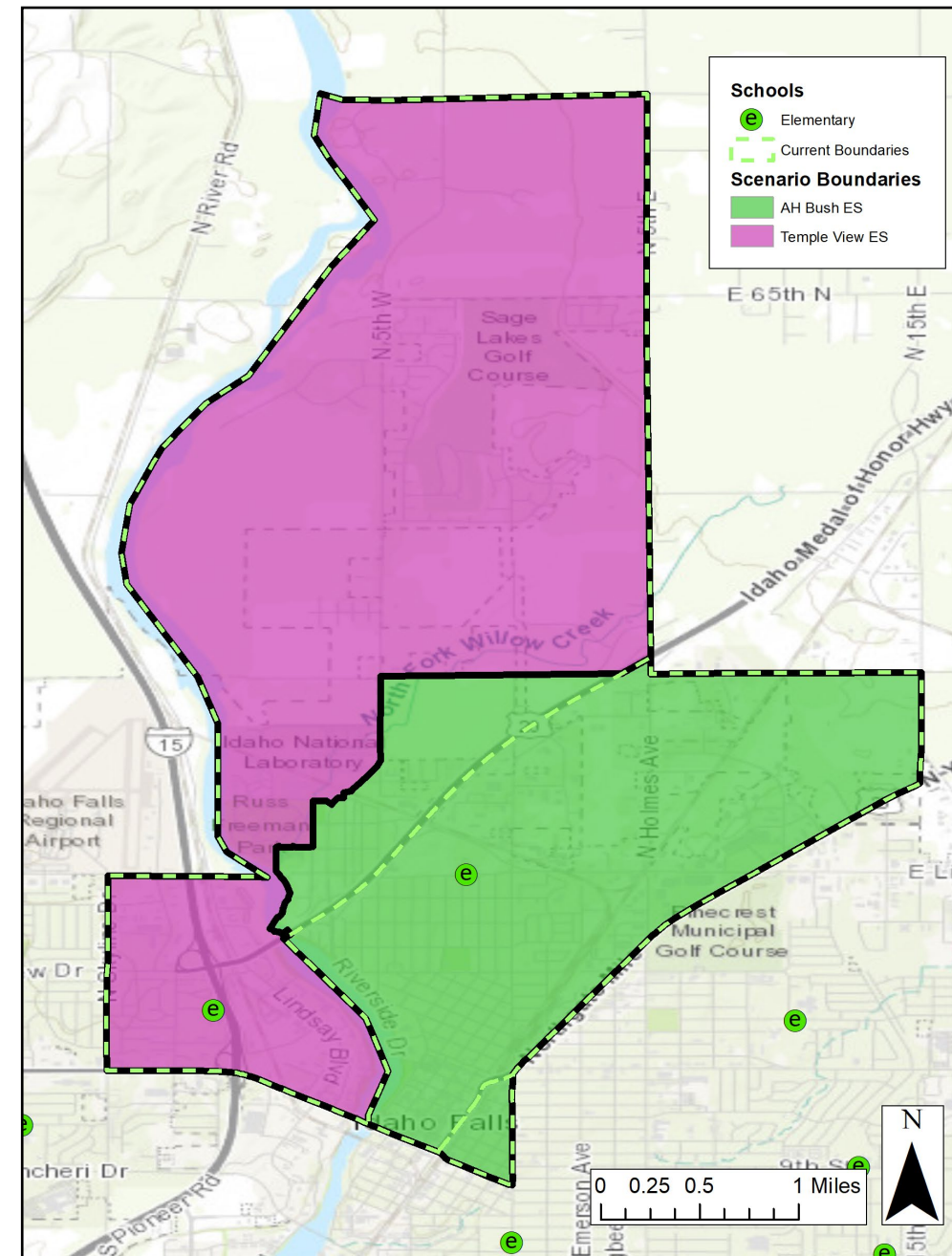
CURRENT							
School	Capacity	Live In Enrollment	Utilization	Grade Adv +1	Grade Adv +2	Grade Adv +3	Grade Adv +4
AH Bush ES	507	303	60%	61%	61%	62%	63%
Temple View ES	410	350	85%	89%	93%	96%	100%

Scenario 4							
School	Capacity	Live In Enrollment	Utilization	Grade Adv +1	Grade Adv +2	Grade Adv +3	Grade Adv +4
AH Bush ES	507	366	72%	73%	73%	75%	76%
Temple View ES	410	287	70%	75%	78%	81%	84%

Scenario will not be presented to community.

- Too many developments remain at Temple View, this does not offer enough longevity

Scenario 4: Students Moved	
KG	9
1	7
2	14
3	6
4	6
5	10
6	11
K-5 Total	52
K-6 Total	63



► SCENARIO 5

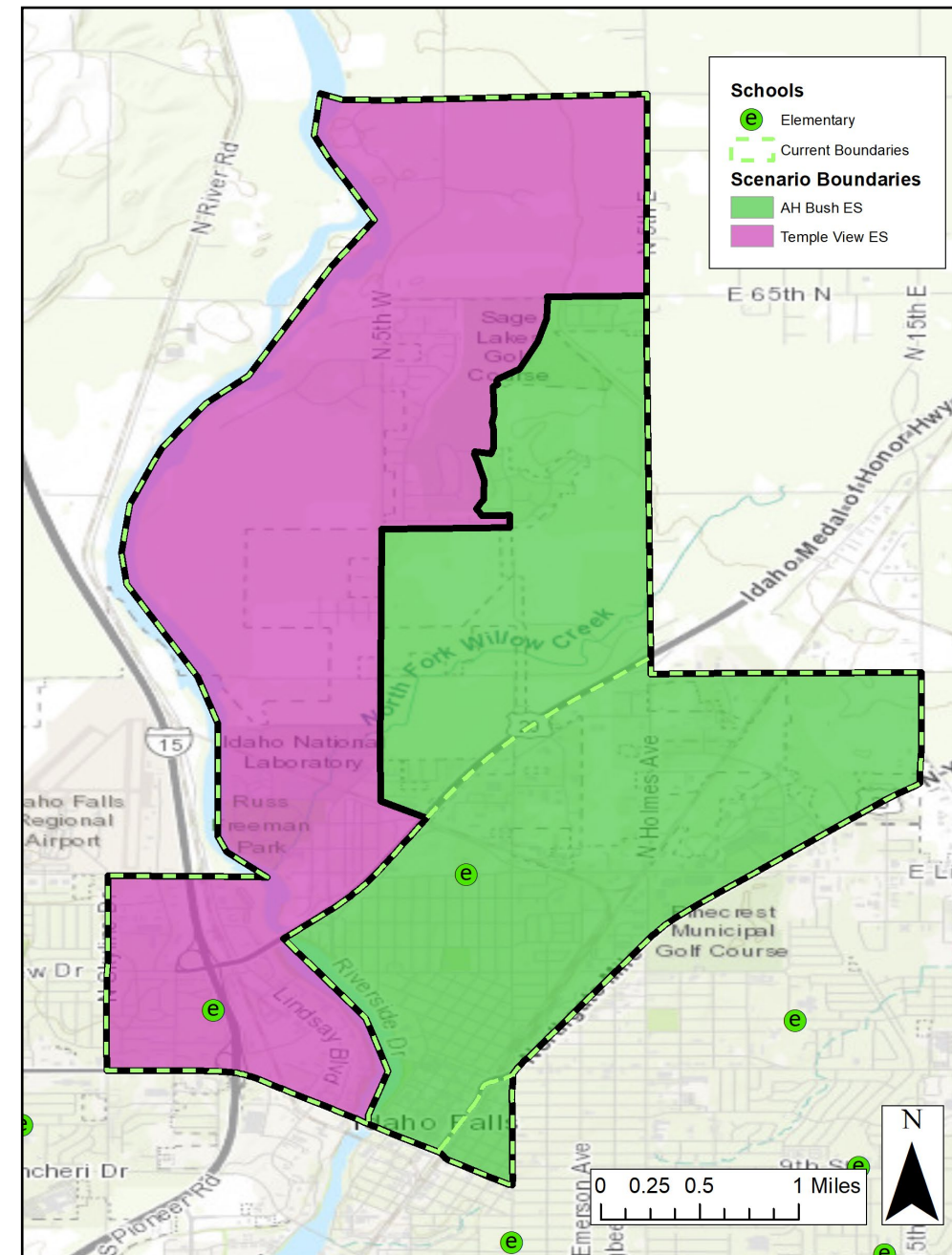
CURRENT							
School	Capacity	Live In Enrollment	Utilization	Grade Adv +1	Grade Adv +2	Grade Adv +3	Grade Adv +4
AH Bush ES	507	303	60%	61%	61%	62%	63%
Temple View ES	410	350	85%	89%	93%	96%	100%

Scenario 5							
School	Capacity	Live In Enrollment	Utilization	Grade Adv +1	Grade Adv +2	Grade Adv +3	Grade Adv +4
AH Bush ES	507	407	80%	84%	86%	88%	90%
Temple View ES	410	246	60%	62%	63%	65%	67%

Scenario will not be presented to community.

- Two busses would have to service the same neighborhood
- Goes against guideline to keep neighborhoods together
- Bush would likely need to be addressed in the near future as housing developments finish construction

Scenario 5: Students Moved	
KG	21
1	15
2	18
3	12
4	17
5	9
6	12
K-5 Total	92
K-6 Total	104





**SCENARIOS:
BENEFITS & CHALLENGES**

► SCENARIO 1

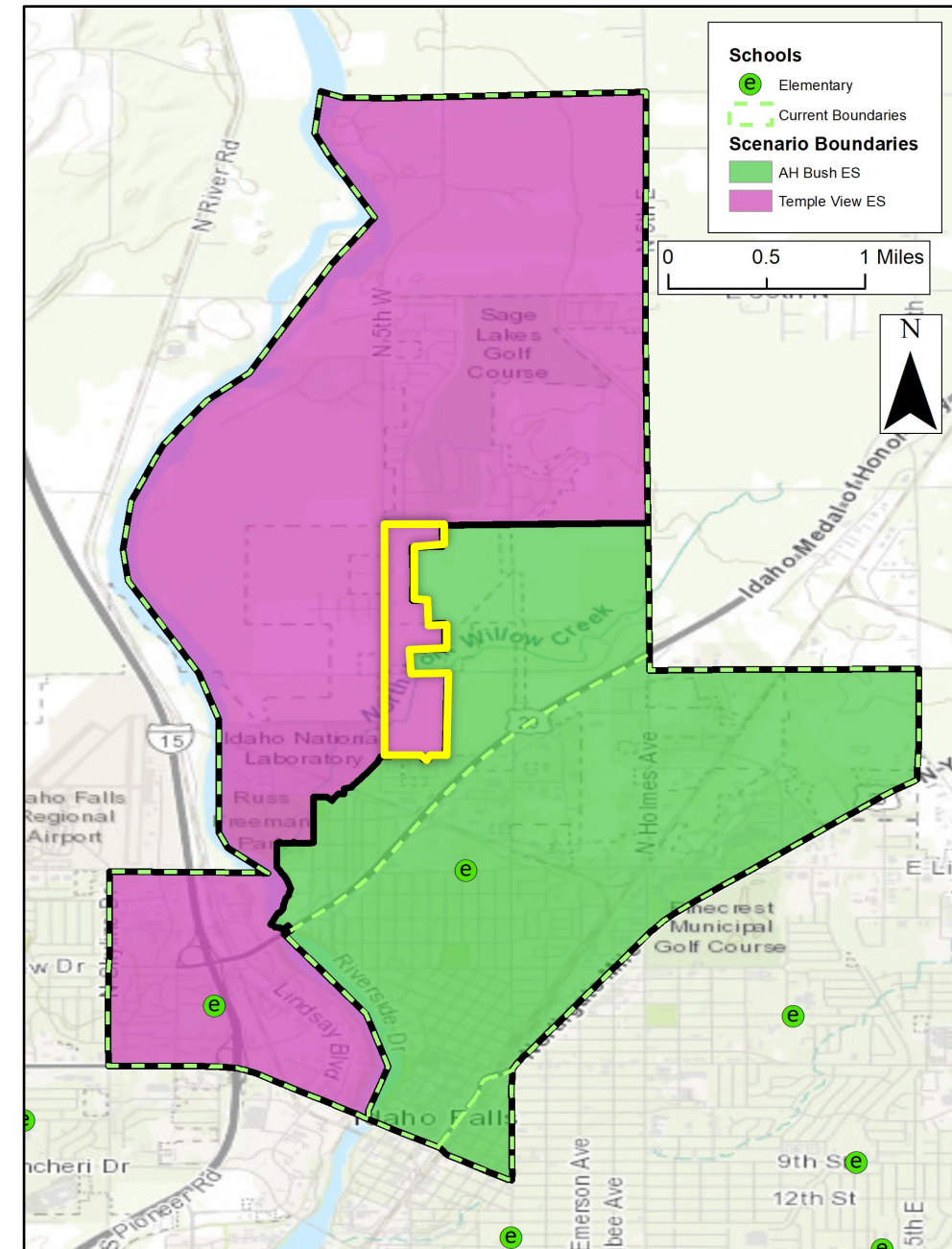
CURRENT							
School	Capacity	Live In Enrollment	Utilization	Grade Adv +1	Grade Adv +2	Grade Adv +3	Grade Adv +4
AH Bush ES	507	303	60%	61%	61%	62%	63%
Temple View ES	410	350	85%	89%	93%	96%	100%

Scenario 1							
School	Capacity	Live In Enrollment	Utilization	Grade Adv +1	Grade Adv +2	Grade Adv +3	Grade Adv +4
AH Bush ES	507	366	72%	74%	73%	75%	76%
Temple View ES	410	287	70%	74%	78%	80%	84%

Scenario will be presented to community.

One change from original: all students living along N 5th W will attend TVES for transportation purposes, impacts <5 students (shown in map in yellow)

Scenario 1: Students Moved	
KG	9
1	8
2	14
3	7
4	7
5	10
6	11
K-5 Total	55
K-6 Total	66



► SCENARIO 3

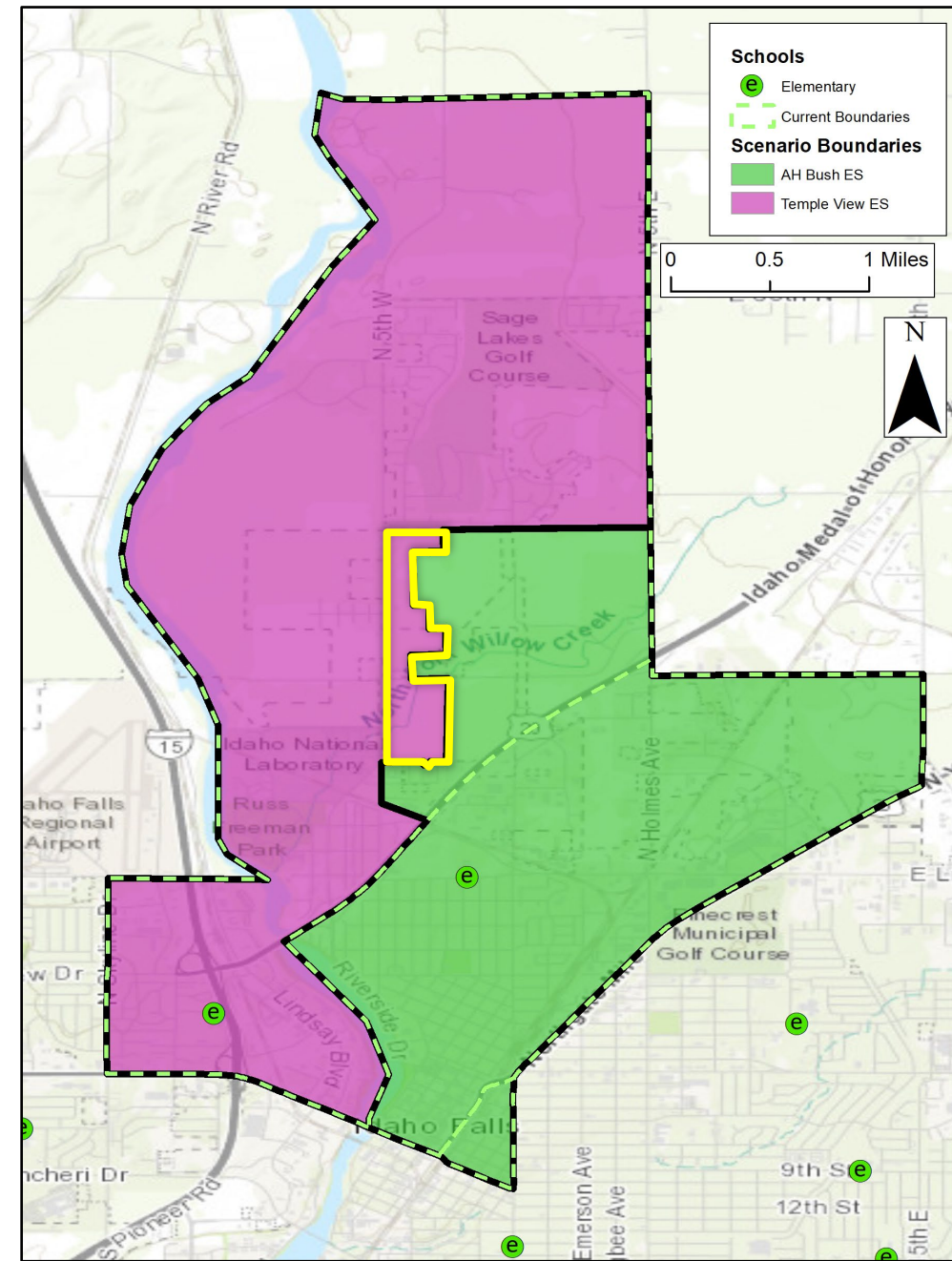
CURRENT							
School	Capacity	Live In Enrollment	Utilization	Grade Adv +1	Grade Adv +2	Grade Adv +3	Grade Adv +4
AH Bush ES	507	303	60%	61%	61%	62%	63%
Temple View ES	410	350	85%	89%	93%	96%	100%

Scenario 3							
School	Capacity	Live In Enrollment	Utilization	Grade Adv +1	Grade Adv +2	Grade Adv +3	Grade Adv +4
AH Bush ES	507	341	67%	70%	70%	72%	73%
Temple View ES	410	312	76%	78%	82%	84%	88%

Scenario will be presented to community.

One change from original: all students living along N 5th W will attend TVES for transportation purposes, impacts <5 students (shown in map in yellow)

Scenario 3: Students Moved	
KG	7
1	5
2	11
3	6
4	4
5	5
6	3
K-5 Total	38
K-6 Total	41



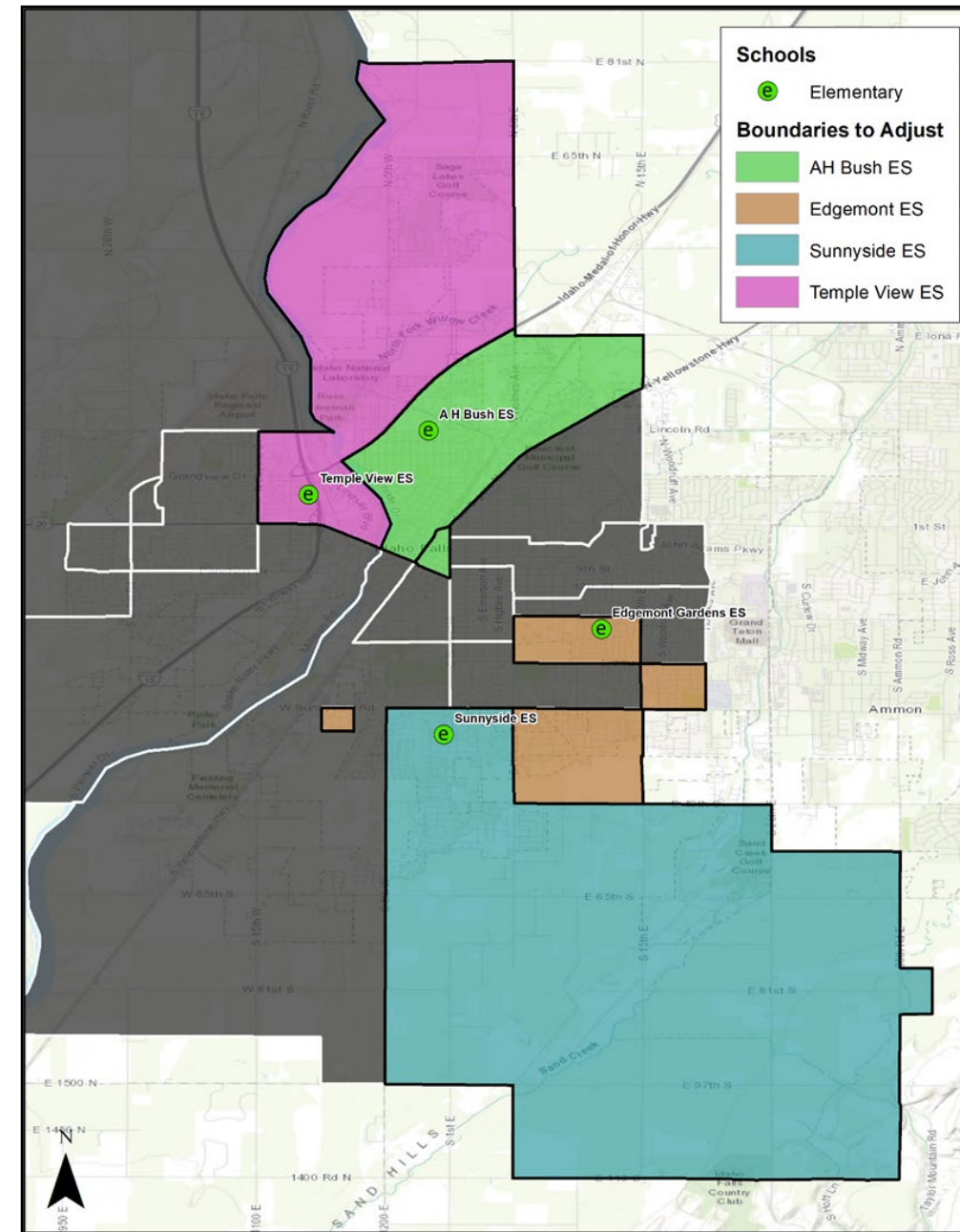
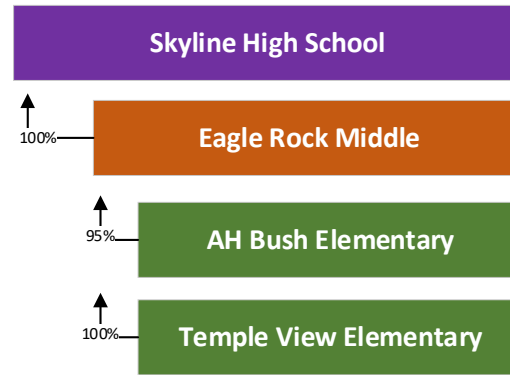
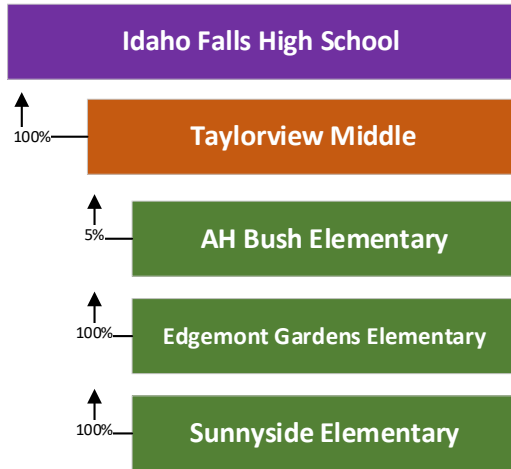


**SCENARIOS:
EDGEMONT GARDENS & SUNNYSIDE**

▶ BACKGROUND DATA

CURRENT STATE

School	Live-In Enrollment	Program Capacity	Program Utilization	5-Year Projected (27-28)	5-Year Utilization
Edgemont Gardens Elementary	420	531	79%	526	99%
Sunnyside Elementary	682	459	149%	688	150%



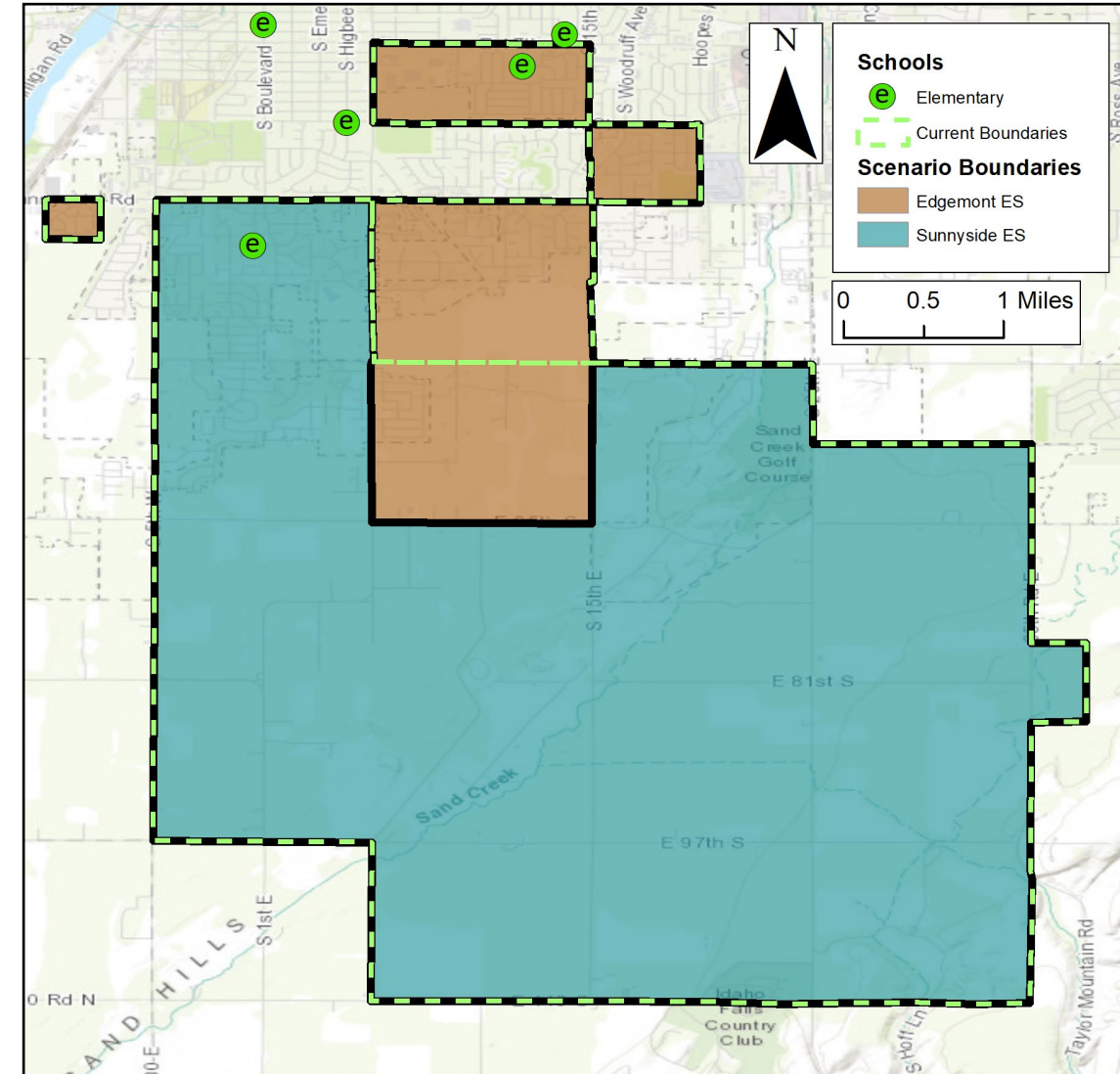
► SCENARIO 1

CURRENT							
School	Capacity	Live In Enrollment	Utilization	Grade Adv +1	Grade Adv +2	Grade Adv +3	Grade Adv +4
Edgemont ES	531	420	79%	79%	76%	77%	75%
Sunnyside ES	459	682	149%	146%	138%	133%	129%

Scenario 1							
School	Capacity	Live In Enrollment	Utilization	Grade Adv +1	Grade Adv +2	Grade Adv +3	Grade Adv +4
Edgemont ES	531	515	97%	97%	95%	96%	94%
Sunnyside ES	459	587	128%	125%	116%	111%	107%

Scenario will be presented to community.

Scenario 1: Students Moved	
KG	14
1	17
2	12
3	15
4	12
5	12
6	13
K-5 Total	82
K-6 Total	95



► SCENARIO 2

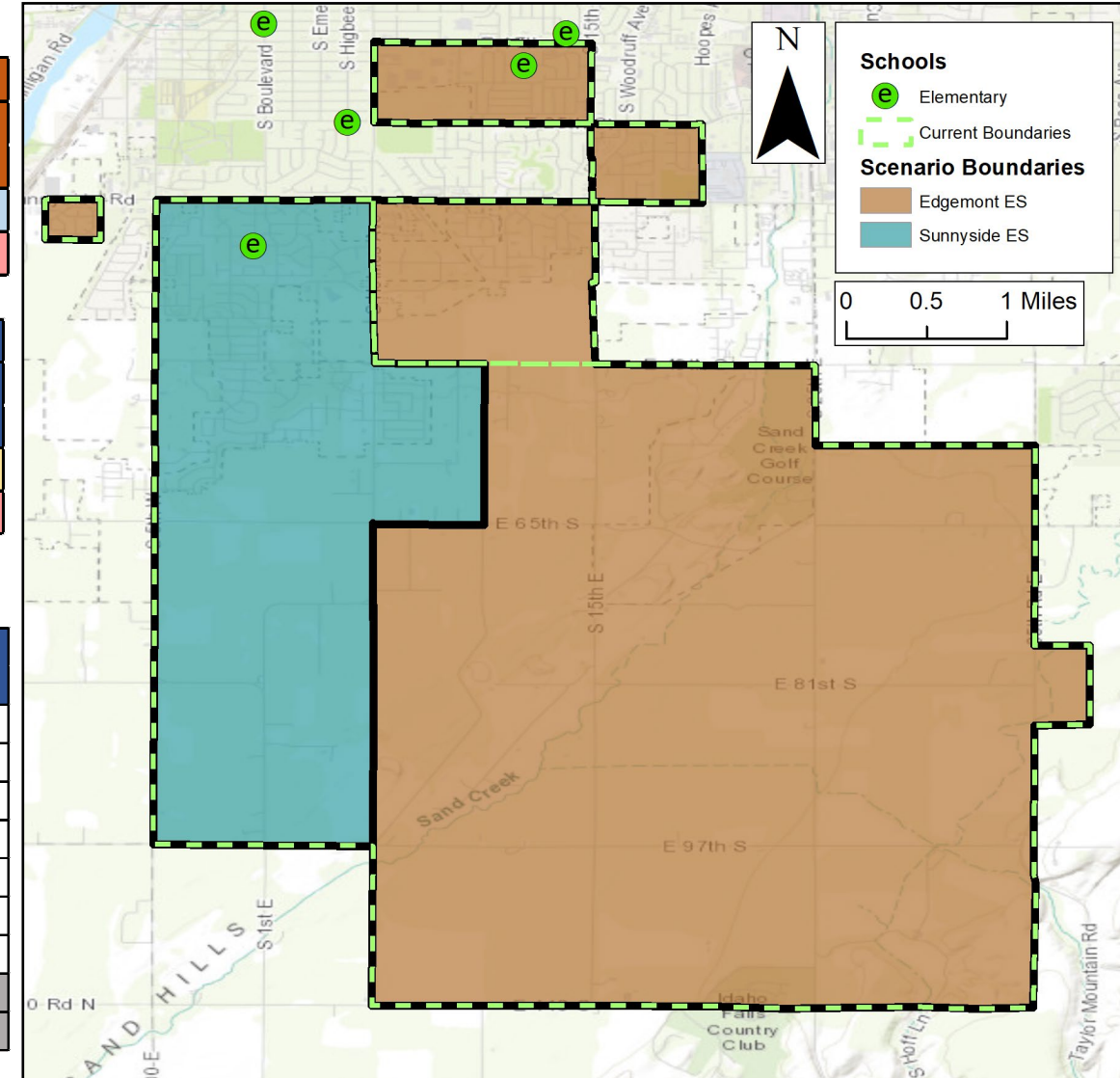
CURRENT							
School	Capacity	Live In Enrollment	Utilization	Grade Adv +1	Grade Adv +2	Grade Adv +3	Grade Adv +4
Edgemont ES	531	420	79%	79%	76%	77%	75%
Sunnyside ES	459	682	149%	146%	138%	133%	129%

Scenario 2							
School	Capacity	Live In Enrollment	Utilization	Grade Adv +1	Grade Adv +2	Grade Adv +3	Grade Adv +4
Edgemont ES	531	540	102%	102%	99%	99%	98%
Sunnyside ES	459	562	122%	120%	111%	107%	102%

Modified Scenario 2-A & 2-B will be presented to community.

NEW: transportation has determined that if the far south area of the District were to attend Edgemont, school start/end times would need to be adjusted **DISTRICT-WIDE.**

Scenario 2: Students Moved	
KG	18
1	14
2	18
3	15
4	20
5	17
6	18
K-5 Total	102
K-6 Total	120



► SCENARIO 3

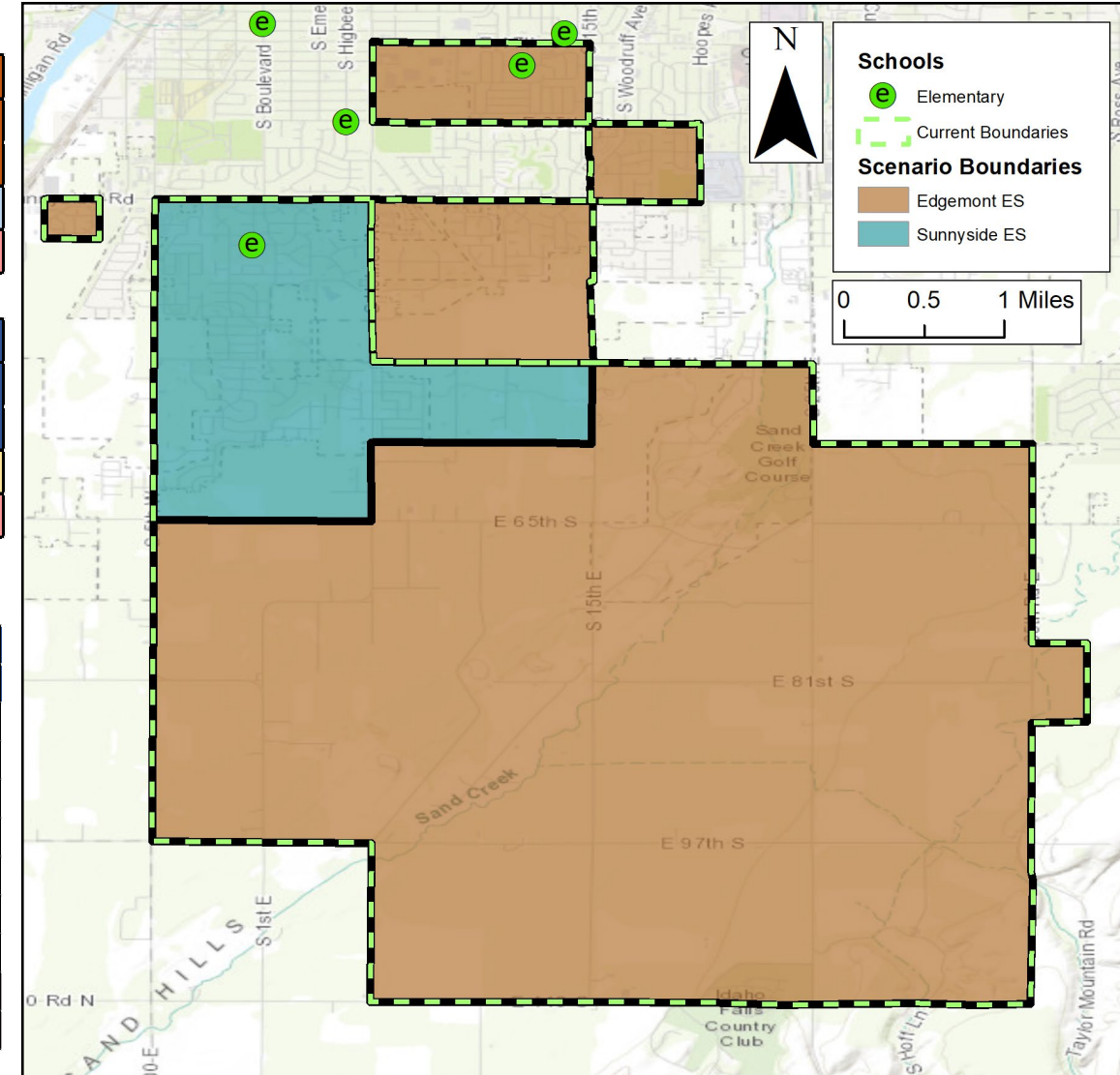
CURRENT							
School	Capacity	Live In Enrollment	Utilization	Grade Adv +1	Grade Adv +2	Grade Adv +3	Grade Adv +4
Edgemont ES	531	420	79%	79%	76%	77%	75%
Sunnyside ES	459	682	149%	146%	138%	133%	129%

Scenario 3							
School	Capacity	Live In Enrollment	Utilization	Grade Adv +1	Grade Adv +2	Grade Adv +3	Grade Adv +4
Edgemont ES	531	537	101%	101%	98%	98%	97%
Sunnyside ES	459	565	123%	120%	113%	108%	103%

Scenario will not be presented to community.

- Adjusting start/stop times would cause disruption throughout the District

Scenario 3: Students Moved	
KG	17
1	12
2	18
3	14
4	20
5	20
6	16
K-5 Total	101
K-6 Total	117



► SCENARIO 4

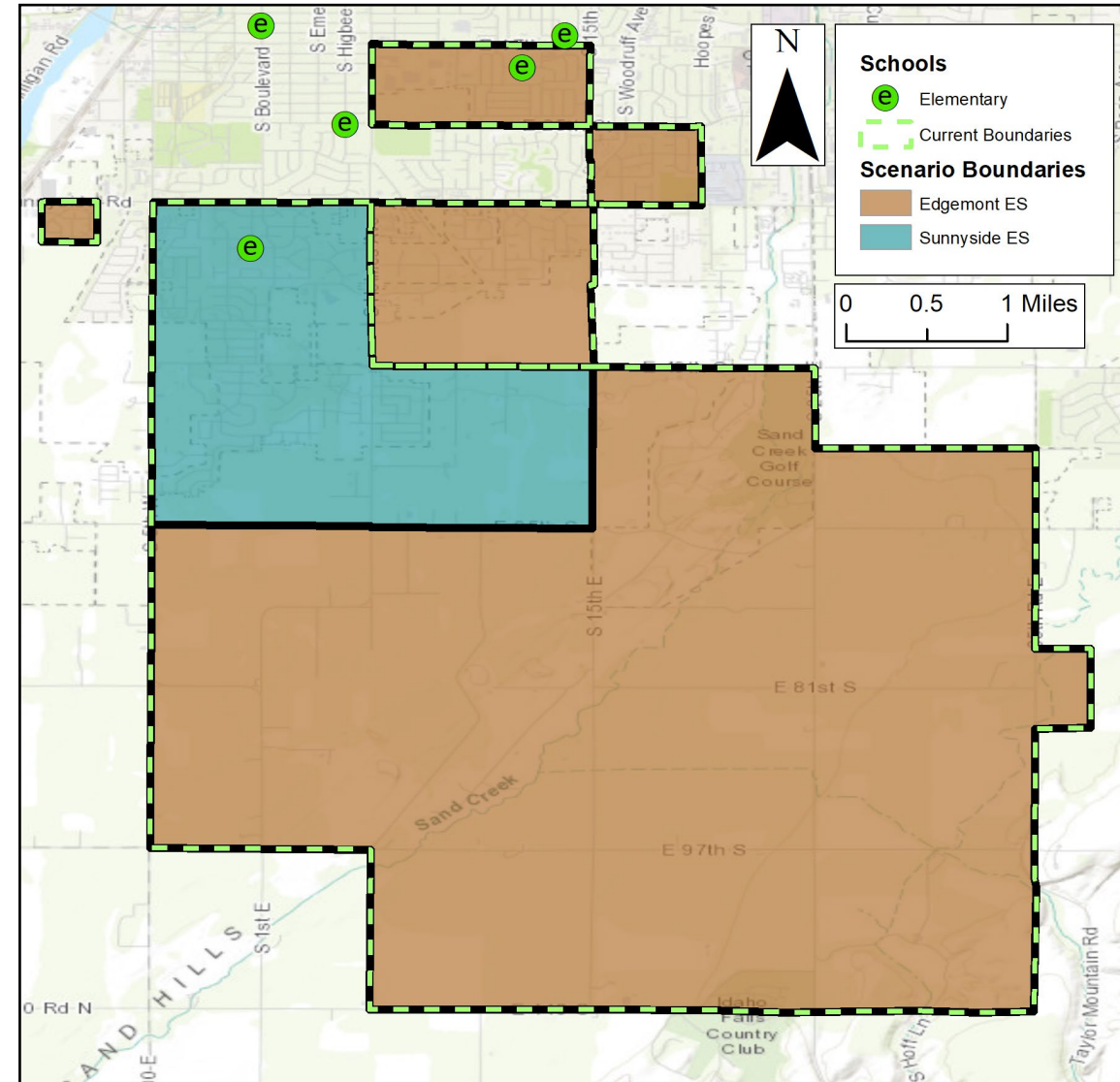
CURRENT							
School	Capacity	Live In Enrollment	Utilization	Grade Adv +1	Grade Adv +2	Grade Adv +3	Grade Adv +4
Edgemont ES	531	420	79%	79%	76%	77%	75%
Sunnyside ES	459	682	149%	146%	138%	133%	129%

Scenario 4							
School	Capacity	Live In Enrollment	Utilization	Grade Adv +1	Grade Adv +2	Grade Adv +3	Grade Adv +4
Edgemont ES	531	530	100%	100%	97%	97%	95%
Sunnyside ES	459	572	125%	122%	114%	110%	105%

Scenario will not be presented to community.

- Adjusting start/stop times would cause great disruption throughout the District

Scenario 4: Students Moved	
KG	16
1	12
2	17
3	12
4	19
5	18
6	16
K-5 Total	94
K-6 Total	110



► MODIFIED SCENARIO 1-A

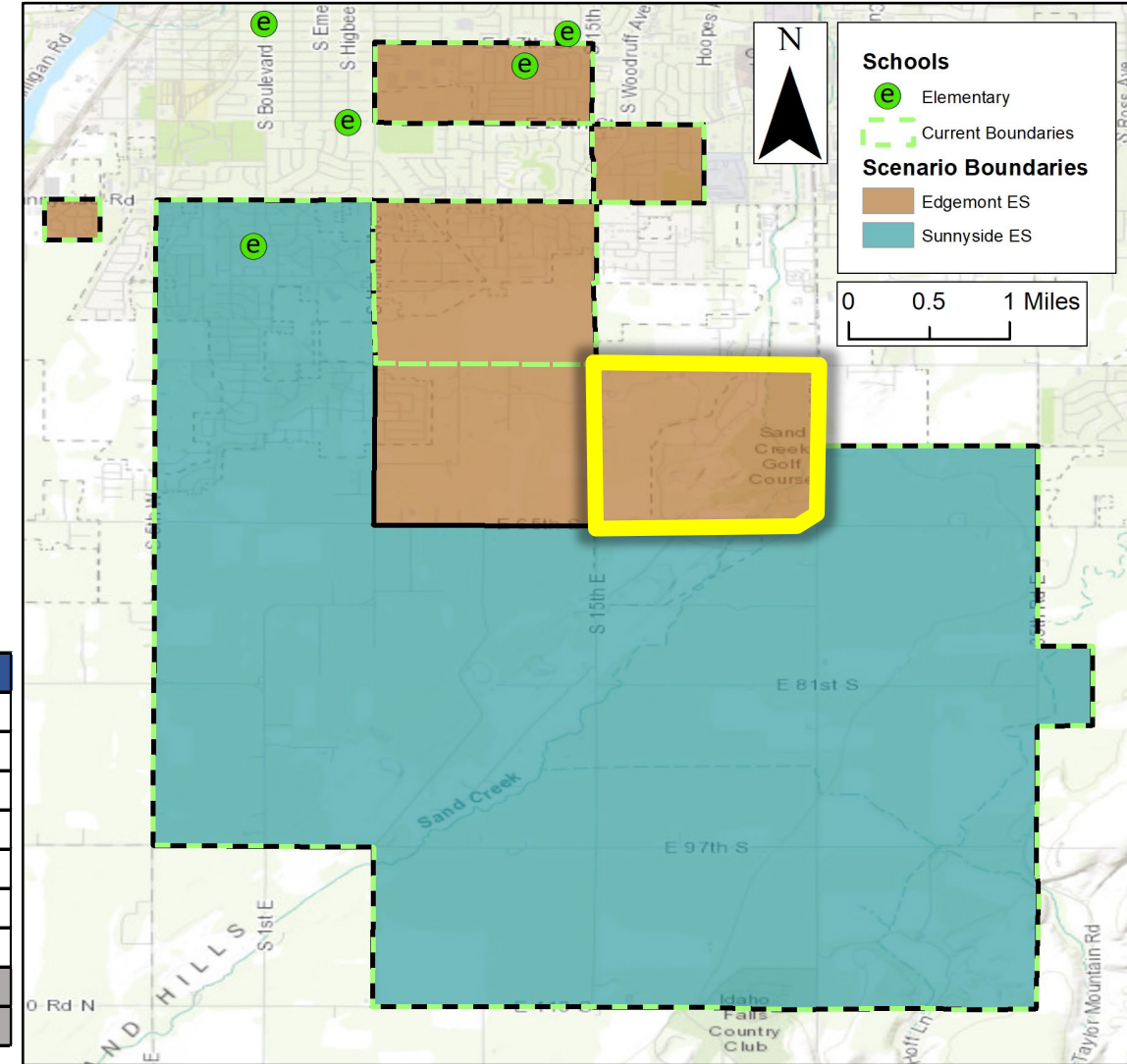
CURRENT							
School	Capacity	Live In Enrollment	Utilization	Grade Adv +1	Grade Adv +2	Grade Adv +3	Grade Adv +4
Edgemont ES	531	420	79%	79%	76%	77%	75%
Sunnyside ES	459	682	149%	146%	138%	133%	129%

Scenario 1-A							
School	Capacity	Live In Enrollment	Utilization	Grade Adv +1	Grade Adv +2	Grade Adv +3	Grade Adv +4
Edgemont ES	531	552	104%	105%	102%	104%	102%
Sunnyside ES	459	550	120%	116%	108%	102%	97%

Students Moved	
KG	21
1	20
2	19
3	18
4	17
5	21
6	16
K-5 Total	116
K-6 Total	132

Scenario will be presented to community.

Changes from original: S-2 to attend Edgemont



► MODIFIED SCENARIO 2-A

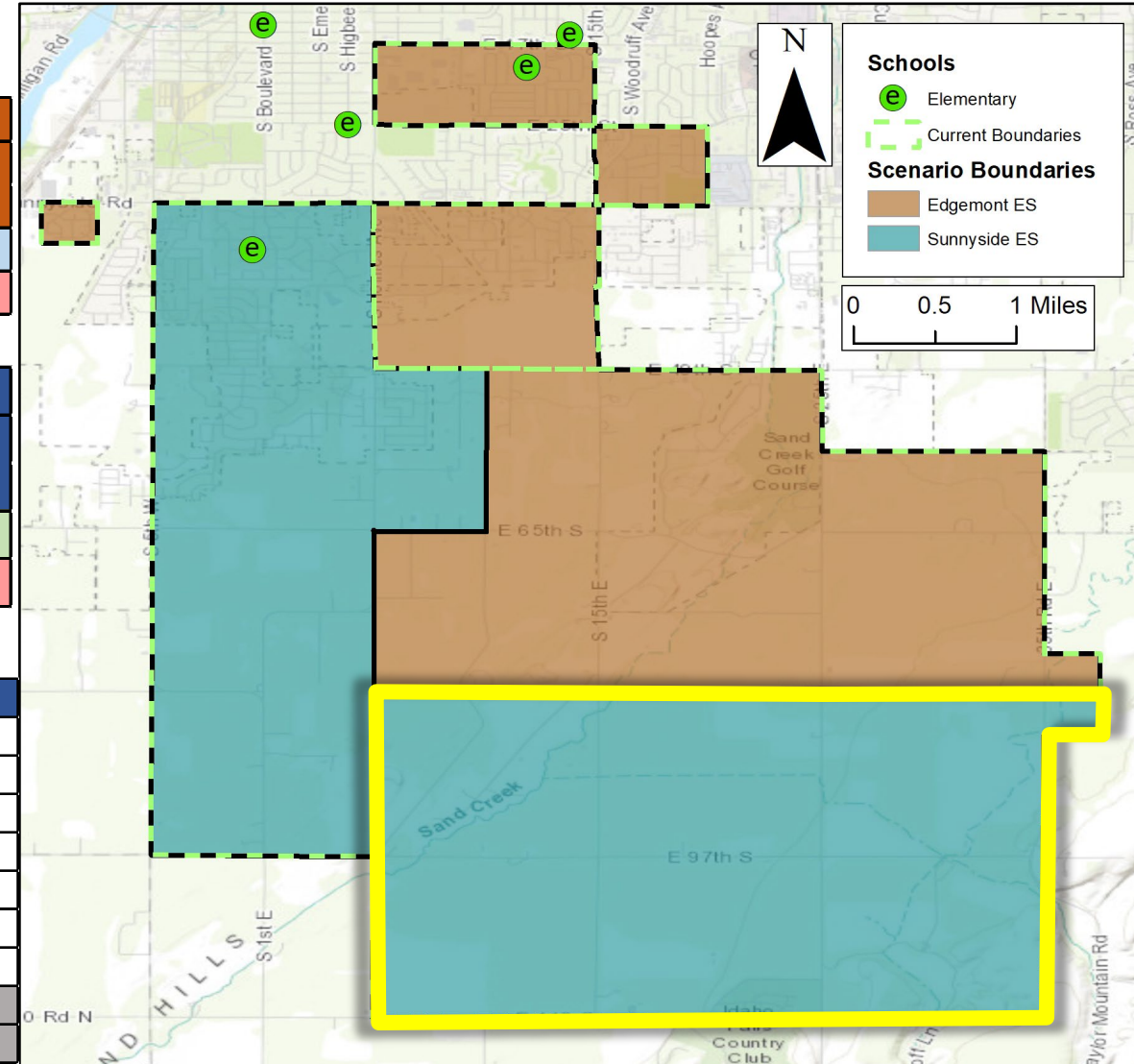
CURRENT							
School	Capacity	Live In Enrollment	Utilization	Grade Adv +1	Grade Adv +2	Grade Adv +3	Grade Adv +4
Edgemont ES	531	420	79%	79%	76%	77%	75%
Sunnyside ES	459	682	149%	146%	138%	133%	129%

Scenario 2-A							
School	Capacity	Live In Enrollment	Utilization	Grade Adv +1	Grade Adv +2	Grade Adv +3	Grade Adv +4
Edgemont ES	531	500	94%	95%	92%	92%	91%
Sunnyside ES	459	602	131%	128%	120%	115%	110%

Scenario will be presented to community.

Changes from original: S-18, S-1, S-17 to attend Sunnyside

Students Moved	
KG	13
1	10
2	10
3	9
4	14
5	14
6	10
K-5 Total	70
K-6 Total	80



► MODIFIED SCENARIO 2-B

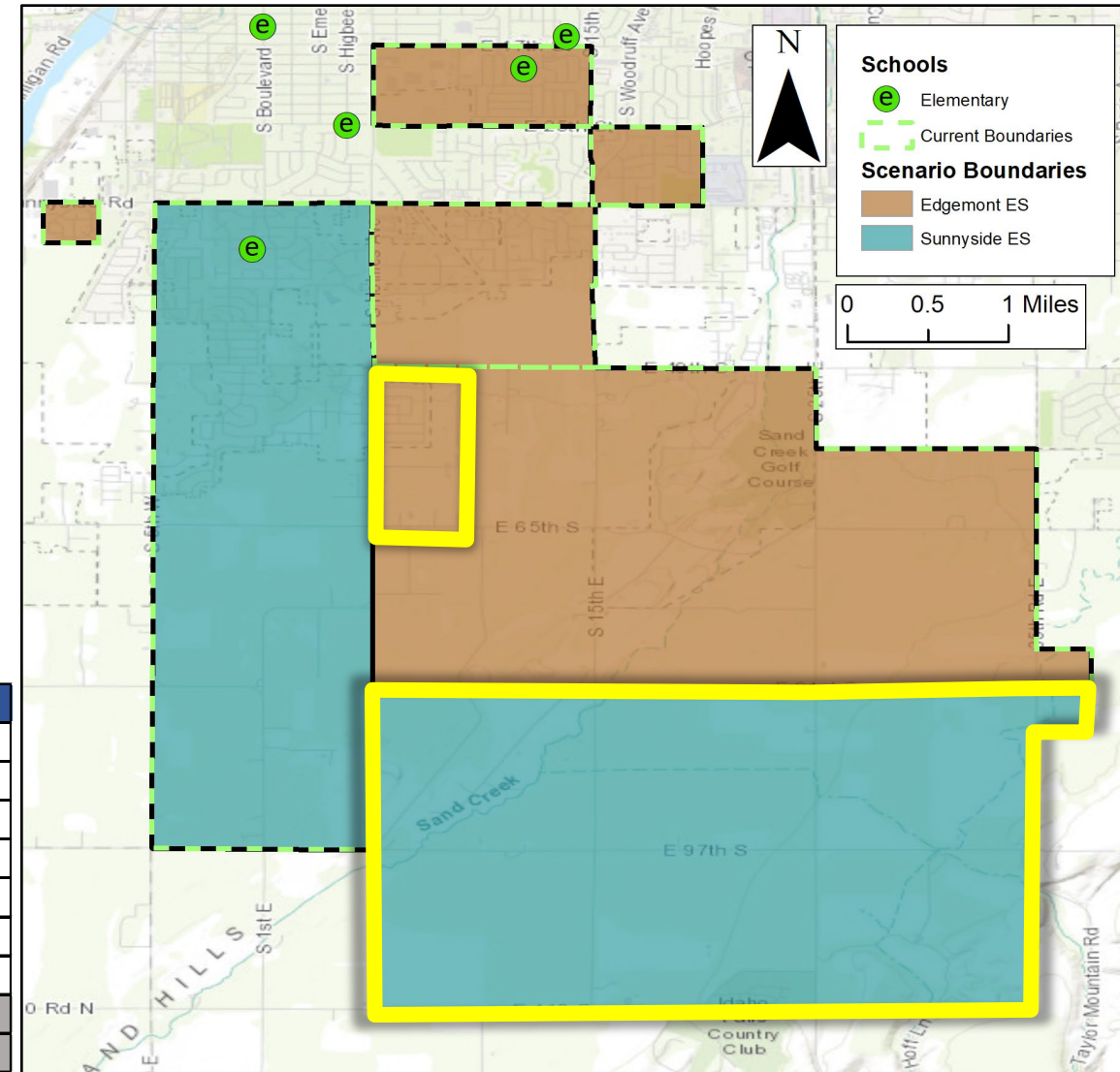
CURRENT							
School	Capacity	Live In Enrollment	Utilization	Grade Adv +1	Grade Adv +2	Grade Adv +3	Grade Adv +4
Edgemont ES	531	420	79%	79%	76%	77%	75%
Sunnyside ES	459	682	149%	146%	138%	133%	129%

Scenario 2-B							
School	Capacity	Live In Enrollment	Utilization	Grade Adv +1	Grade Adv +2	Grade Adv +3	Grade Adv +4
Edgemont ES	531	579	109%	109%	107%	108%	106%
Sunnyside ES	459	523	114%	111%	103%	97%	93%

Students Moved	
KG	24
1	24
2	21
3	21
4	23
5	25
6	21
K-5 Total	138
K-6 Total	159

Scenario will be presented to community.

Changes from original: S-18, S-1, S-17 to attend Sunnyside
S-11, S12 to attend Edgemont





**SCENARIOS:
BENEFITS & CHALLENGES**

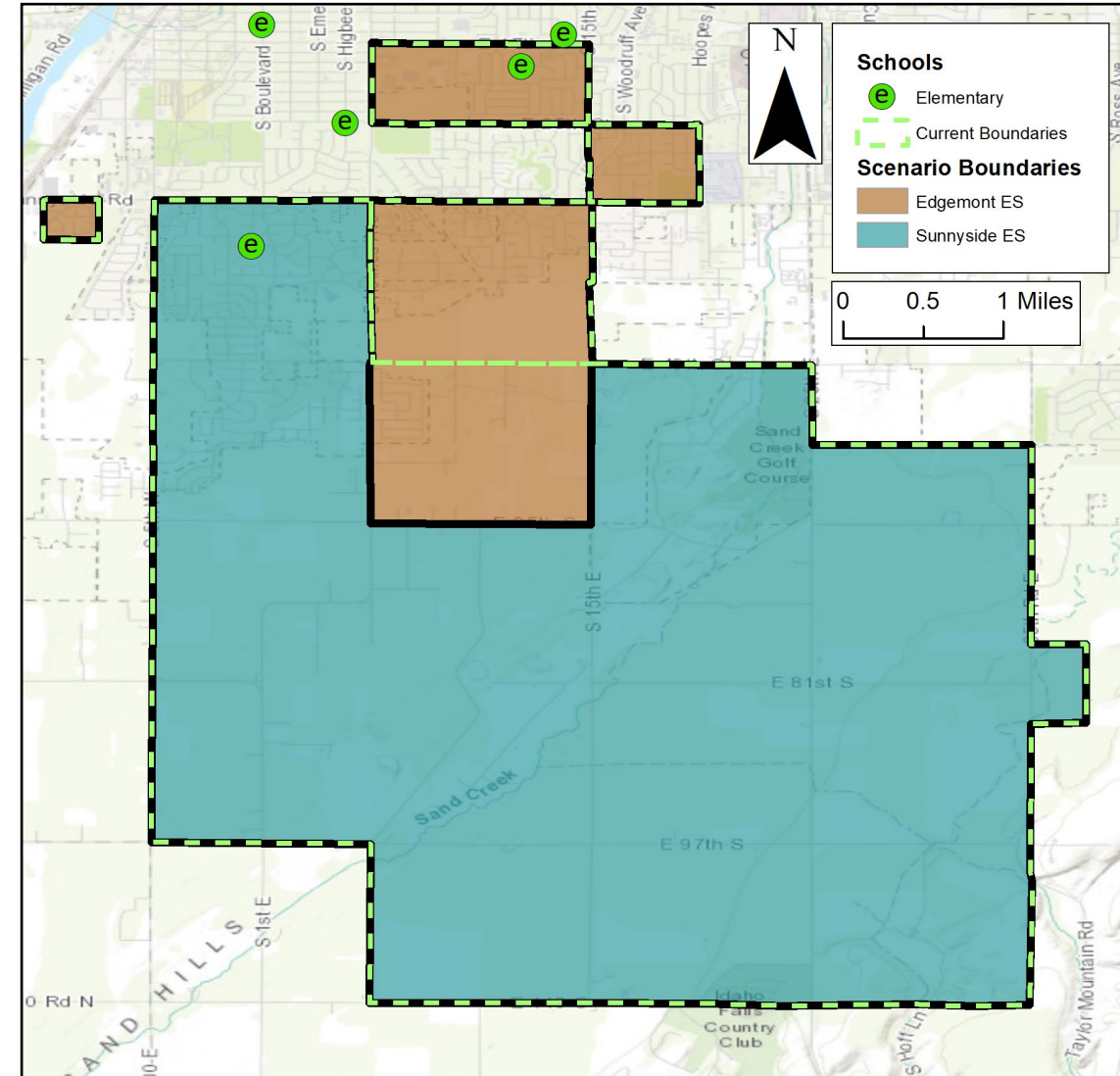
► SCENARIO 1

CURRENT							
School	Capacity	Live In Enrollment	Utilization	Grade Adv +1	Grade Adv +2	Grade Adv +3	Grade Adv +4
Edgemont ES	531	420	79%	79%	76%	77%	75%
Sunnyside ES	459	682	149%	146%	138%	133%	129%

Scenario 1							
School	Capacity	Live In Enrollment	Utilization	Grade Adv +1	Grade Adv +2	Grade Adv +3	Grade Adv +4
Edgemont ES	531	515	97%	97%	95%	96%	94%
Sunnyside ES	459	587	128%	125%	116%	111%	107%

Scenario will be presented to community.

Scenario 1: Students Moved	
KG	14
1	17
2	12
3	15
4	12
5	12
6	13
K-5 Total	82
K-6 Total	95



► MODIFIED SCENARIO 1-A

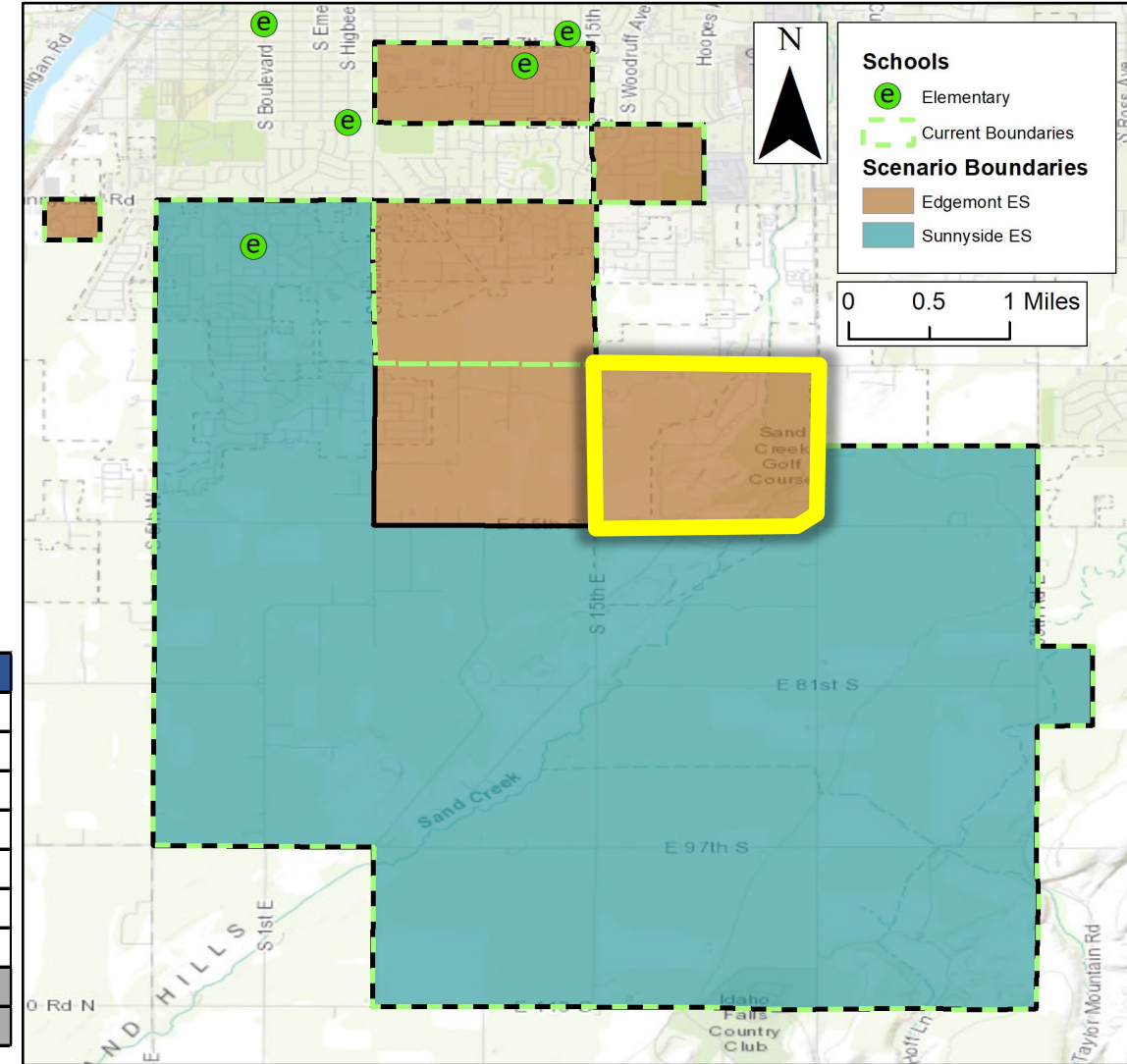
CURRENT							
School	Capacity	Live In Enrollment	Utilization	Grade Adv +1	Grade Adv +2	Grade Adv +3	Grade Adv +4
Edgemont ES	531	420	79%	79%	76%	77%	75%
Sunnyside ES	459	682	149%	146%	138%	133%	129%

Scenario 1-A							
School	Capacity	Live In Enrollment	Utilization	Grade Adv +1	Grade Adv +2	Grade Adv +3	Grade Adv +4
Edgemont ES	531	552	104%	105%	102%	104%	102%
Sunnyside ES	459	550	120%	116%	108%	102%	97%

Students Moved	
KG	21
1	20
2	19
3	18
4	17
5	21
6	16
K-5 Total	116
K-6 Total	132

Scenario will be presented to community.

Changes from original: S-2 to attend Edgemont



► MODIFIED SCENARIO 2-A

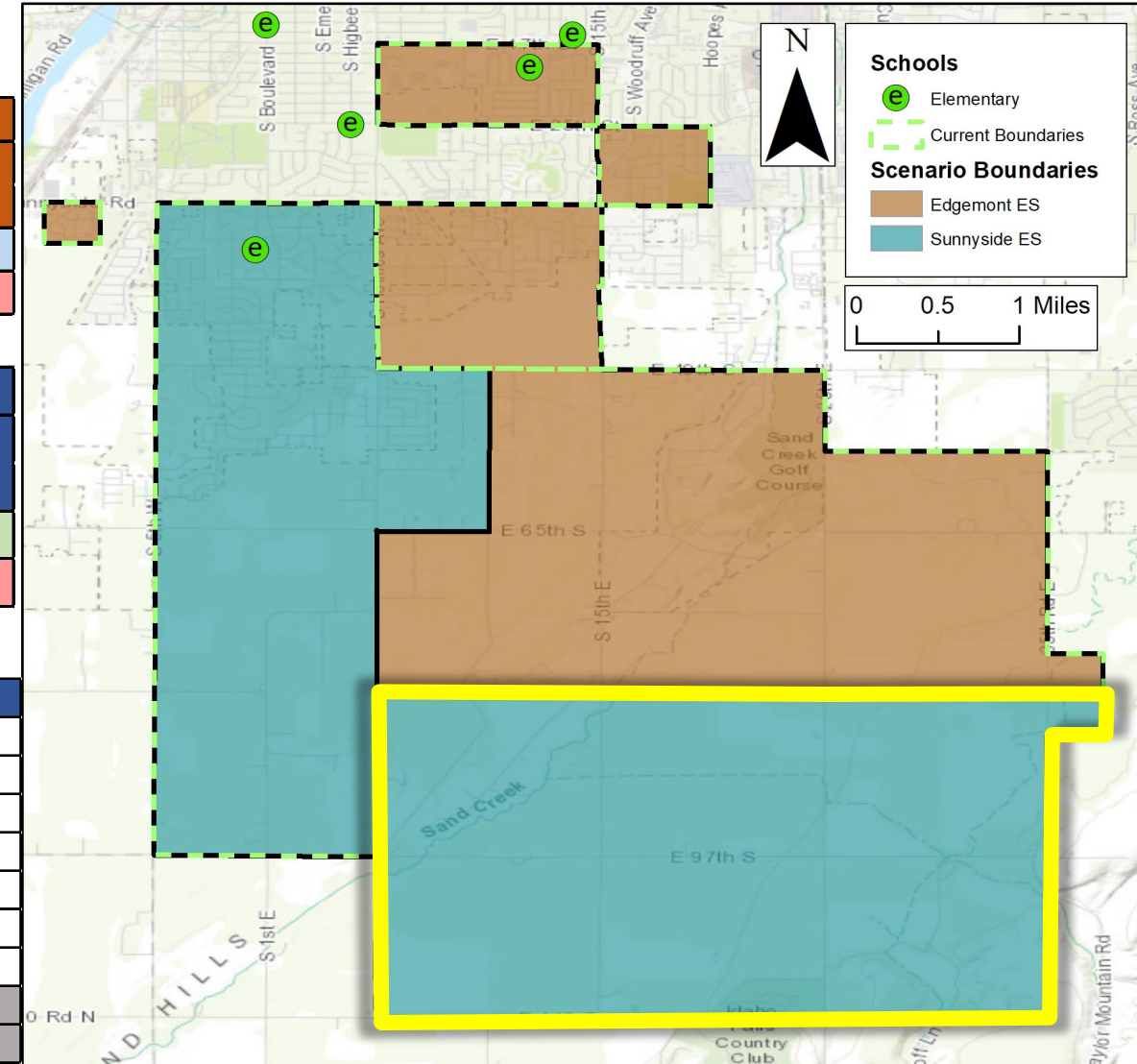
CURRENT							
School	Capacity	Live In Enrollment	Utilization	Grade Adv +1	Grade Adv +2	Grade Adv +3	Grade Adv +4
Edgemont ES	531	420	79%	79%	76%	77%	75%
Sunnyside ES	459	682	149%	146%	138%	133%	129%

Scenario 2-A							
School	Capacity	Live In Enrollment	Utilization	Grade Adv +1	Grade Adv +2	Grade Adv +3	Grade Adv +4
Edgemont ES	531	500	94%	95%	92%	92%	91%
Sunnyside ES	459	602	131%	128%	120%	115%	110%

Scenario will be presented to community.

Changes from original: S-18, S-1, S-17 to attend Sunnyside

Students Moved	
KG	13
1	10
2	10
3	9
4	14
5	14
6	10
K-5 Total	70
K-6 Total	80



► MODIFIED SCENARIO 2-B

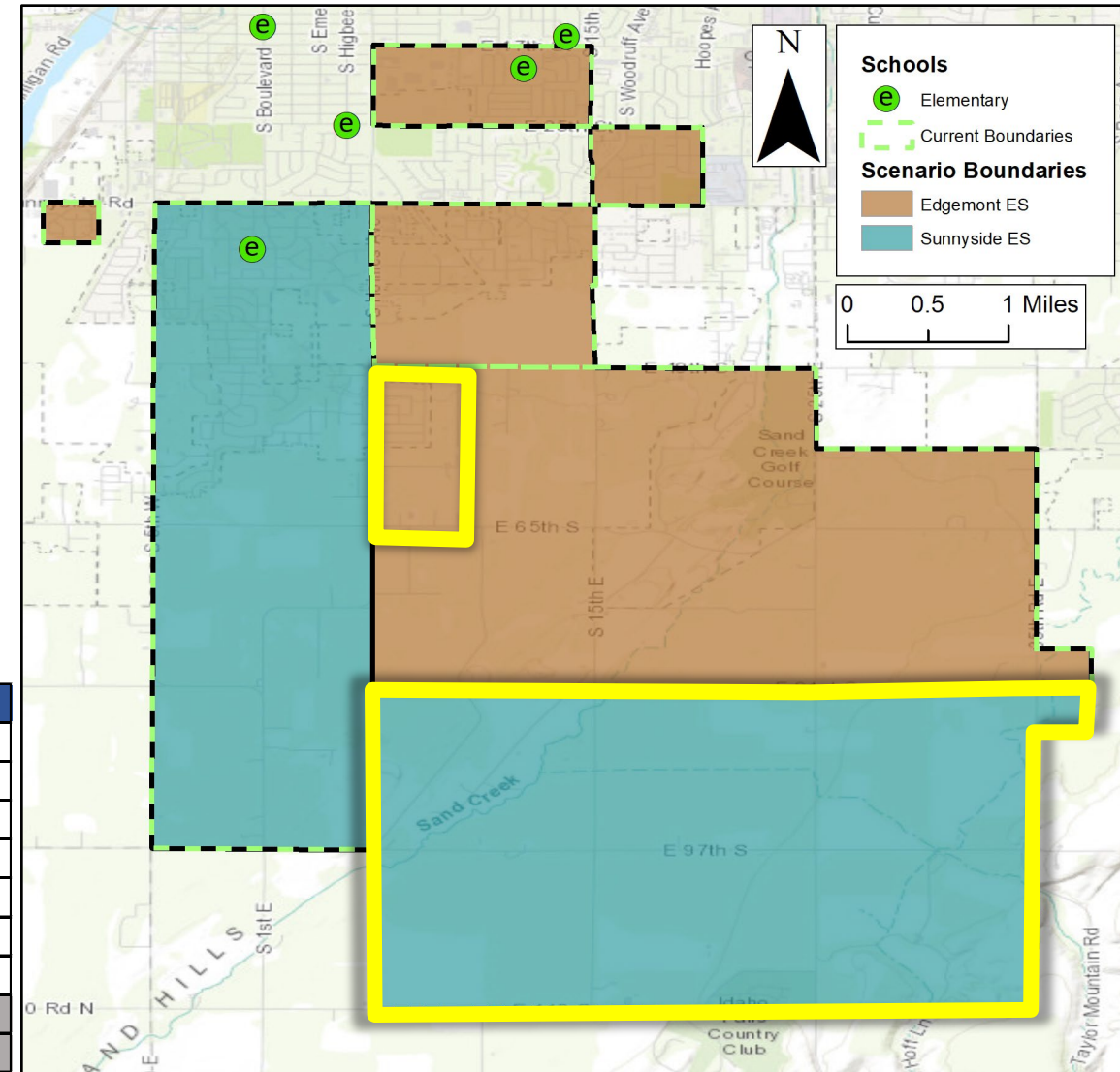
CURRENT							
School	Capacity	Live In Enrollment	Utilization	Grade Adv +1	Grade Adv +2	Grade Adv +3	Grade Adv +4
Edgemont ES	531	420	79%	79%	76%	77%	75%
Sunnyside ES	459	682	149%	146%	138%	133%	129%

Scenario 2-B							
School	Capacity	Live In Enrollment	Utilization	Grade Adv +1	Grade Adv +2	Grade Adv +3	Grade Adv +4
Edgemont ES	531	579	109%	109%	107%	108%	106%
Sunnyside ES	459	523	114%	111%	103%	97%	93%

Students Moved	
KG	24
1	24
2	21
3	21
4	23
5	25
6	21
K-5 Total	138
K-6 Total	159

Scenario will be presented to community.

Changes from original: S-18, S-1, S-17 to attend Sunnyside
S-11, S12 to attend Edgemont





COOPERATIVE STRATEGIES

COMPLETE FINANCIAL & DEMOGRAPHIC PLANNING FOR EDUCATION

THANK YOU
WE APPRECIATE YOUR TIME