



COOPERATIVE STRATEGIES

COMPLETE FINANCIAL & DEMOGRAPHIC PLANNING FOR EDUCATION

GOOCHALND COUNTY PUBLIC SCHOOLS

BOUNDARY ADJUSTMENT OPTIONS
COMMUNITY SURVEY RESULTS

APRIL, 2022



Table of Contents

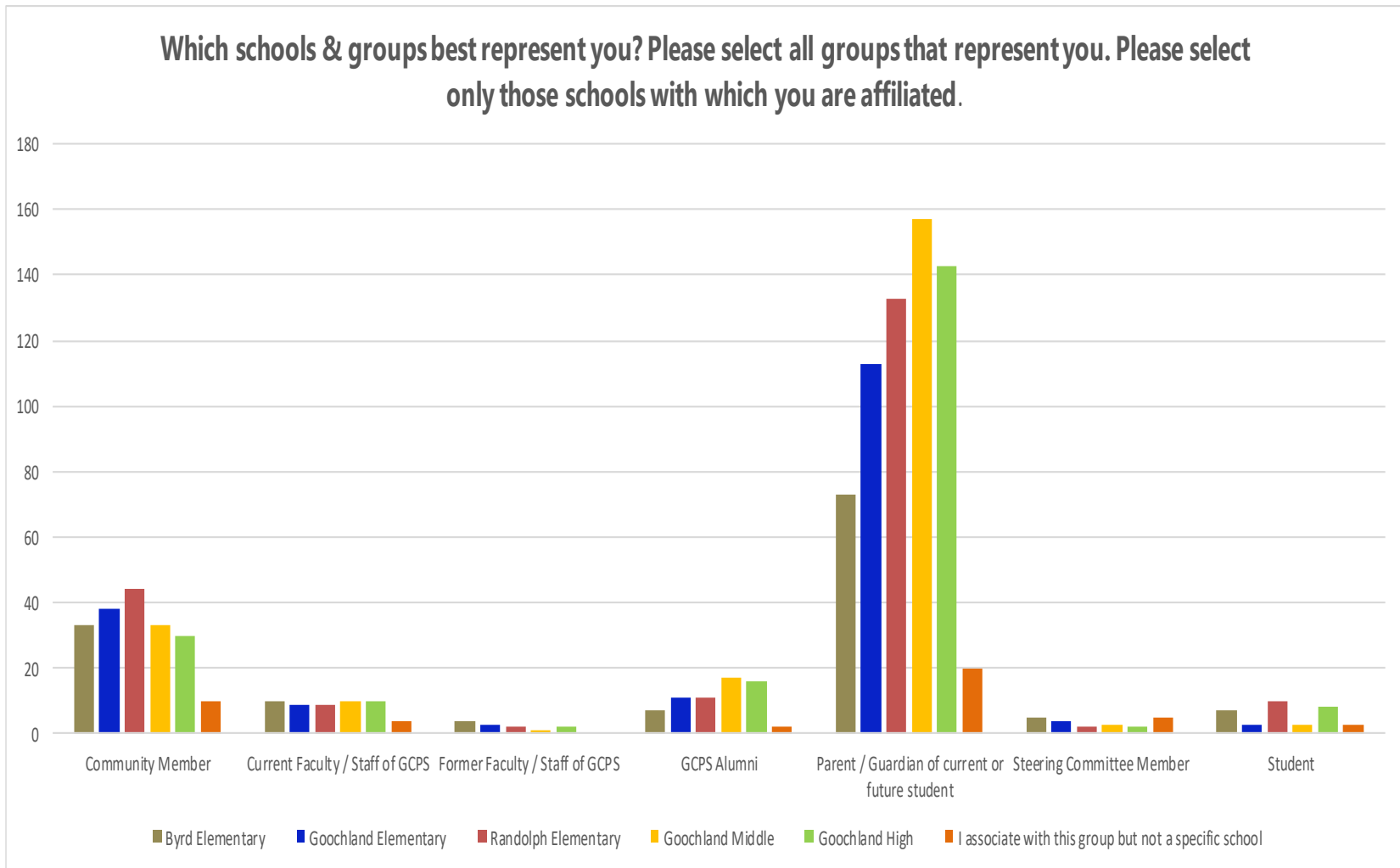
On March 9, 2022, two boundary adjustment options for the Goochland County Public Schools were made available for community review and feedback via an online survey. Along with this, an in-person meeting was held on March 16th at Goochland High School to provide additional data and allow community members an opportunity to ask questions. This report details the feedback received from the survey.

Table of Contents

Demographics	3
Option 1	4
Option 2.....	10
Additional Feedback	15



Demographics



Other (Please Specify):

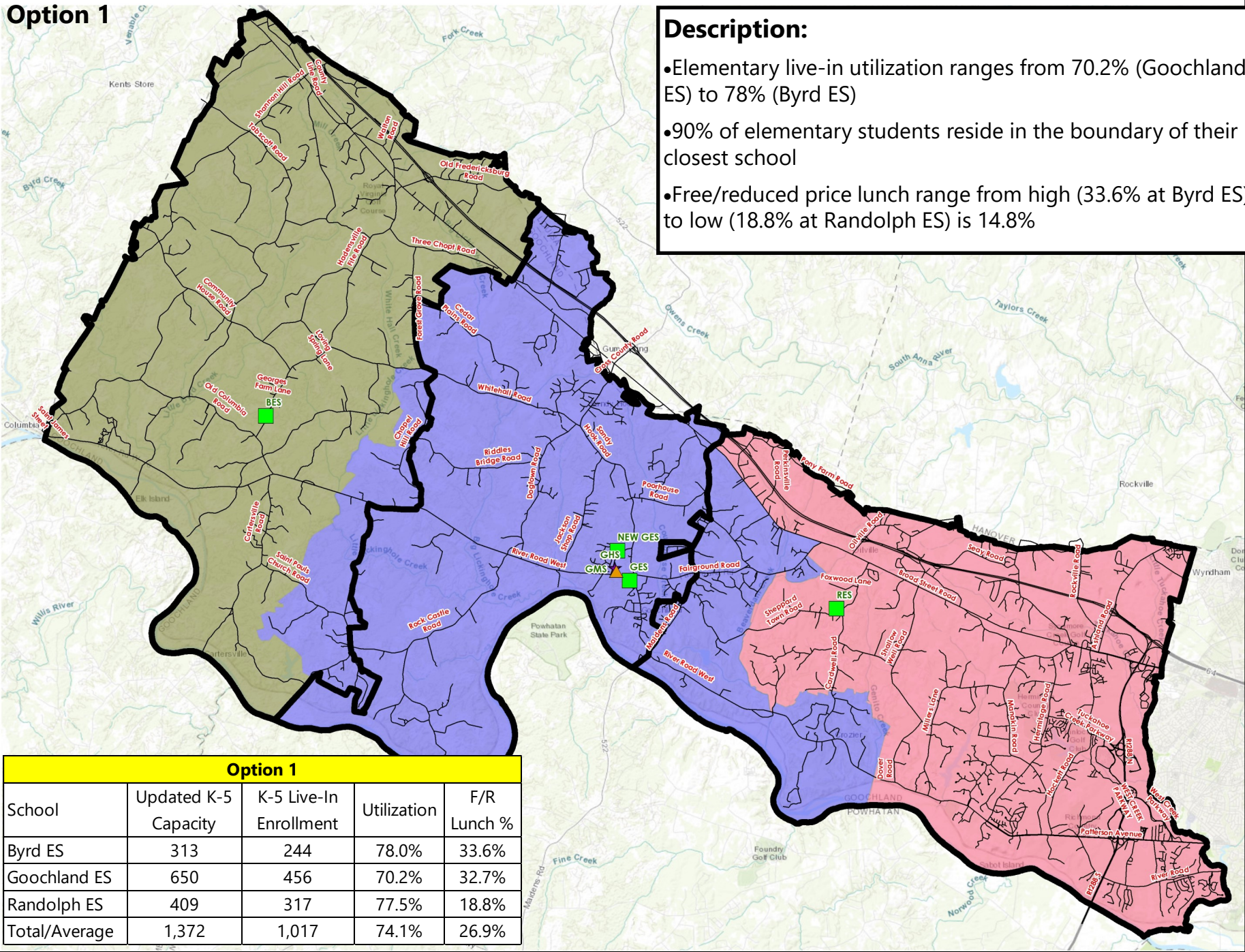
- Both of my sons attended RES and GMS prior to GHS
- ECSE pre-k school
- Live in Byrd attendance zone



Option 1

Description:

- Elementary live-in utilization ranges from 70.2% (Goochland ES) to 78% (Byrd ES)
- 90% of elementary students reside in the boundary of their closest school
- Free/reduced price lunch range from high (33.6% at Byrd ES) to low (18.8% at Randolph ES) is 14.8%

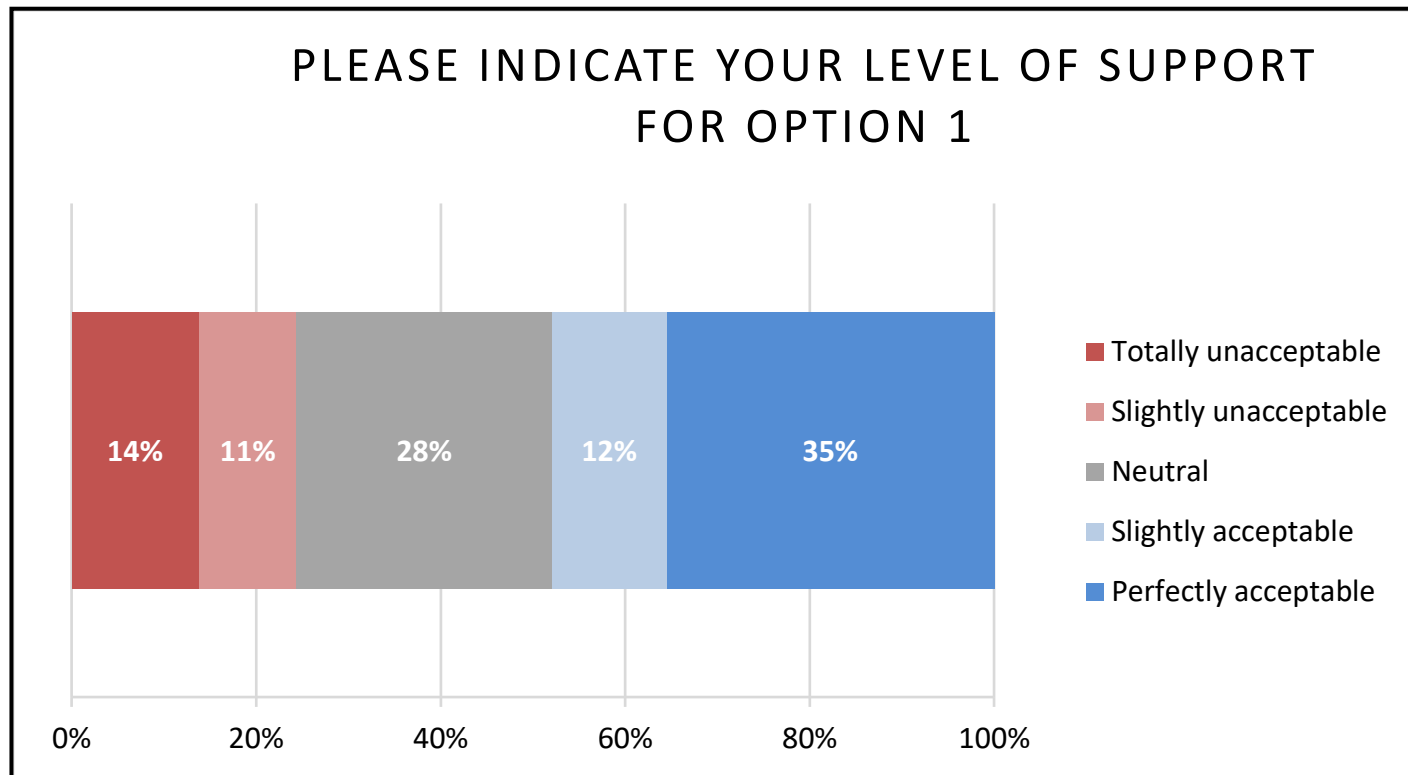


Option 1				
School	Updated K-5 Capacity	K-5 Live-In Enrollment	Utilization	F/R Lunch %
Byrd ES	313	244	78.0%	33.6%
Goochland ES	650	456	70.2%	32.7%
Randolph ES	409	317	77.5%	18.8%
Total/Average	1,372	1,017	74.1%	26.9%



Option 1 - How acceptable is the Option 1 boundary adjustment proposal?

The table below details the level of support for Option 1, based on 217 responses.

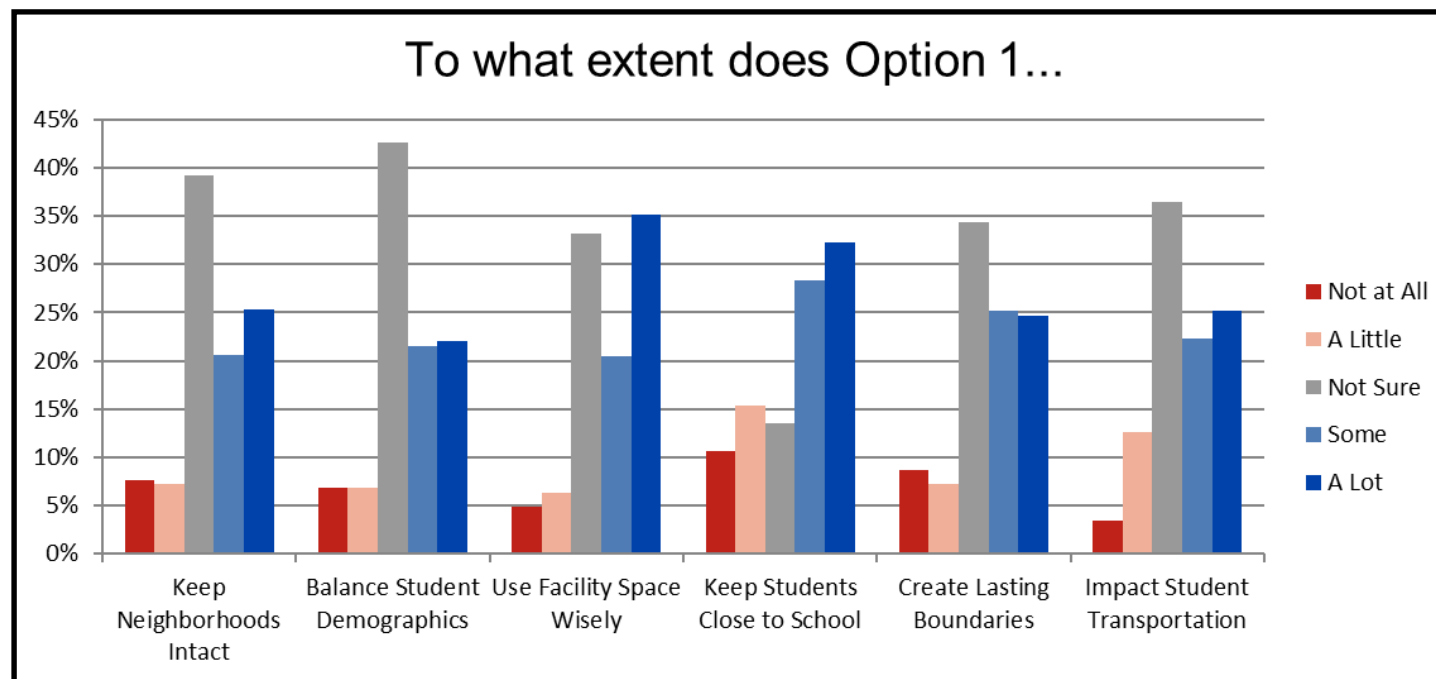




Option 1 - To what extent does Option 1...

- Keep Neighborhoods Intact
- Balance Student Demographics
- Use Facility Space Wisely
- Keep Students Close to School
- Create Lasting Boundaries
- Impact Student Transportation

The results reflected on the table below are based on 211 responses.





Option 1 - Please share your thoughts about the Option 1 boundary adjustment proposal.

Details on schools, roads, and neighborhoods are appreciated.

- 2 of our kids will be in 5th grade at Randolph when this starts. We would like them to finish there with district providing transportation
 - ALL SCHOOLS ARE CROWDING - ONLY GES WILL IMPROVE THE OTHERS WONT CAUSE IT TOO MANY KIDS
 - Anyone on River Road east of Beaverdam Creek should stay at Randolph
- All cardwell Rd should stay at Randolph
- As the county voted to only build a new GES, as long as this boundary adjustment does not affect us on the River Road corridor, I'm all for it.
 - Cardwell Road should be a border. To go East of that doesn't make sense.
 - GES would have larger classrooms and it may take students longer getting to and from school.
 - Having the GES/RES boundary extent to Dover, and include Caldwell Rd. does not make sense to me. The students that reside in those areas would be going to a school (GES) that is further away from their home than their current school (RES). This would add transportation time for these individuals, probably on both ends of the day. The added transportation time could present a problem with buses returning for GMS/GHS pickup, assuming the staggered school start times are remaining as is.
 - How many more teachers/staff will be hired at GES since enrollment will go from 297 to 450+?!
- Of the 2 options, it is preferable because it still leaves the current BES and RES at higher utilization rates which should be alleviated by the 15 year plan to build 3 new schools. Plus RES shows a
- downtrend in enrollment in the future. BES shows up but removing students and sending them to GES should help with that.
- I am hopeful that there could be an option to grandfather in students choosing to attend their original school that fall within the redistricting boundaries.
 - I cannot know about student demographics beyond F/R price meals. Race/ethnicity is an important factor to consider and those data are not shared presently. Please share this also!
 - I don't like this one because it stretches too far into the Randolph District where the other kids go to Randolph I think it's better to cut it straight across and not drop down the side stretching into another District make the line clear and concise across the board not down the Border so that kids living near neighborhoods in the Crozer area excuse me Randolph area are not being separated from kids that live on the same street but go to different schools. This creates separation of neighbors.
 - I feel like sending my child to a different school would be upsetting to not see their current friends. Second, I feel like they wouldn't have as much time to work with students since y'all are already short staffed. Think about the children they are already behind from the pandemic. I think it should be a choice for the parent what's in the child's best interest for their child since your policy is no child left behind.
 - I feel, we are 5 minutes from randolph and I an IEP child and is very comfortable with teachers at randolph and her future IEP teachers. We feel this would not be a good change for my daughters at all. Plus, she right many doctor appointments and going to Goochland elementary is out of the way plus it would take more class time cause we would need to take her out sooner so could make doctors appointments... please leave the same...



Option 1

- I have kids who previously went to GES and I loved the teacher to student ratio not sure if this will effect that or not. That would be my only concern but it doesn't really pertain to us anymore.
- I live on Broad Street and feel like the transportation would double based on the boundary adjustment.
- I question why one side of Rt. 6 down to Lee Rd would attend GES, while the other side would attend RES. This seems arbitrary and will likely recreate redundancy in bus routes in this area of the county.
- If adding more students to BES will the school add more classrooms? Will the school hire more teachers to assist with the influx of students? What will be the total student per class?
- It doesn't quite affect us as it will those that the boundary adjustments directly impact. Of course, current friends and acquaintances will move and disappear until Middle School.
- It is unacceptable to move families who are less than 5 minutes to their school to a commute of more than 15-20 minutes!!
- It would be less crowded. This would help with the car rider , I hope . Less children in classroom.
- Keep in mind all new subdivisions that will be going in and completing within GES and RES boundaries which could create overcrowding at one location being RES and not GES.
- Length of bus ride should be considered. We live at the western end of current line and our kids have an hour long bus ride. That's a lot especially for kindergarten children
- Need more roads and wider roads. Too many people now.
- No plan is ideal, but clearly something needs to happen. I think more could be done to allow in affected areas to slowly transition out with instead of allowing only 5th graders to remain.
- Not sure it makes sense to have the boundary at an angle for RES. You have folks at the bottom of Caldwell headed to GES.
- Obviously this is not ideal for families who are impacted. It does seem like the people on Sheppard Town Road or on Cardwell who will now go to GES are rather inconvenienced but RES is also over crowded. I think at this point Goochland could probably offer a slower transition for families with established ties at their current school if transportation was provided.
- Option 1 appears to encroach into the west end more than option two. It has an odd layout and looks like it would move more children out of their current school than option 2 would.
- Option 1 separates neighbors and prohibits children from attending the school that is closest to them!
- Our driveway goes through the boundary line.
- RES is closer to our home than GES. Boundaries should be made keeping in mind that parents goes to school frequently and your one time decision impact us everyday!
- RES is the most overcrowded/over-utilized of the elementary schools, a trend that likely will continue given population growth trends, so the plan that does the most to reduce overcrowding/ utilization at RES makes the most sense.
- Roads are not able to handle the current capacity and with the new builds Fairgrounds exit and Fairgrounds Road are not able to handle the traffic. Which then impacts working parents and students on school busses.
- The areas on Cardwell Rd, even near Rt. 6 are geographically closer to RES. Seems odd to give them a longer ride to move to GES.
- The Bridgewater neighborhood and the roads west (Perkinsville & Pony Farm Rd) and north of 250/I-64 should attend the new GES. I do like the idea of moving lines farther east to help with the future Randolph Elementary, unless lines will be re-drawn when our county is ready to build it.
- The cutoff on Rt. 6 does not make sense. You have Lee Rd going to



Option 1

GES, but the Beaverdam Creek/Strawberry Run going to RES. You will have to send a bus all the way around to pick up the kids on Beaverdam Creek to go to RES. A better solution would be to divide between Covington and Beaverdam Creek for bus purposes.

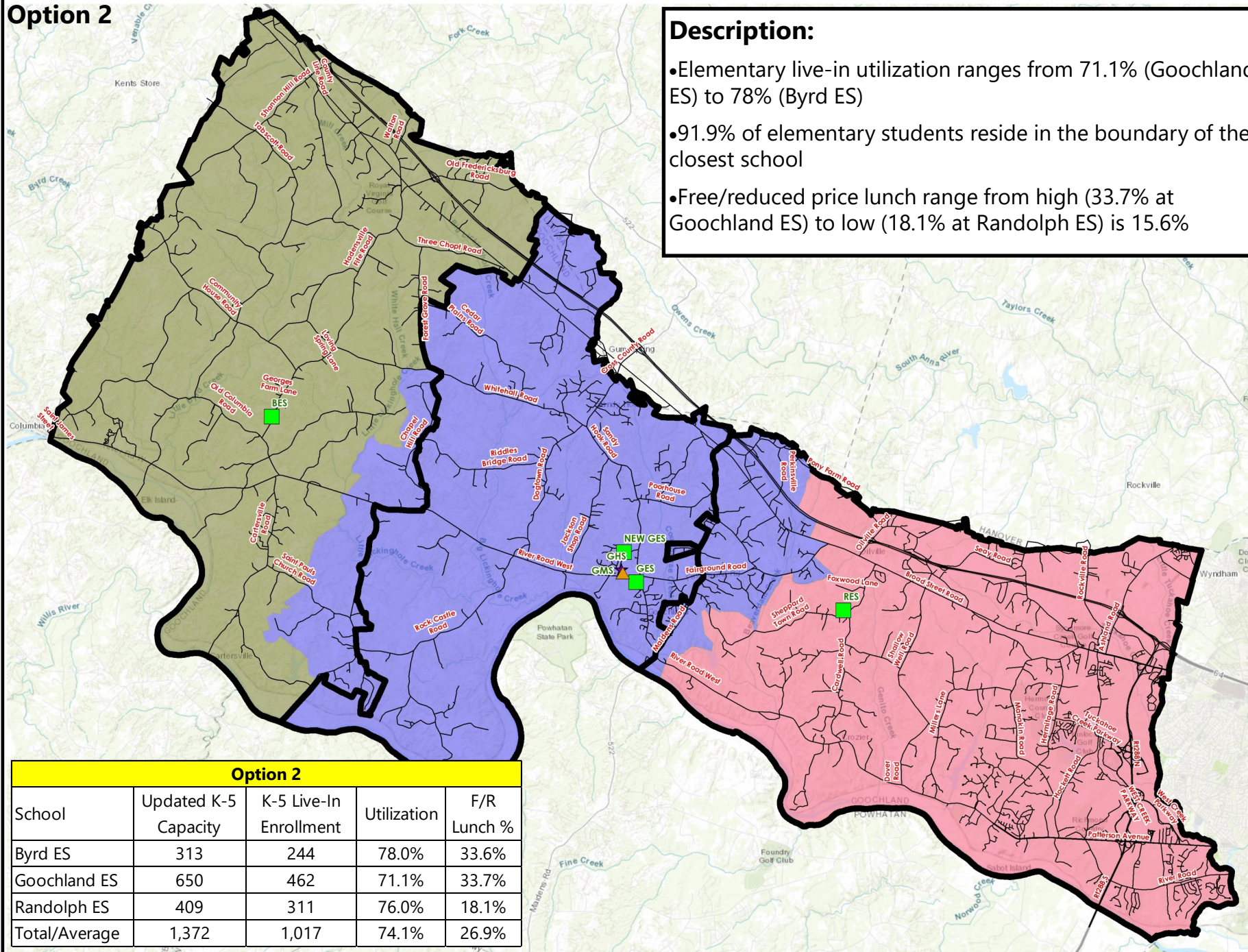
- The shift to make distances to school shorter makes perfect sense. However, the longer travel for residents on River Rd West near Dover Rd seems counterproductive as it is closer to Randolph ES than
- We don't like it - moves kids too far during transportation and to another school. They should go to the school that is closest to them.
- We live in the James River Landing neighborhood off of Marlin road in the SW portion of the county. Our children currently go to GES and we want them to continue to go to the new GES. Options 1 and 2 seem to do that so we're happy with either, provided our children continue to go to GES.
- We live on Briesmaster Way, and our current commute to Randolph is under 10 minutes. Moving this to Goochland elementary creates a lot of logistical difficulties.
- We live on cardwell close to Res yet would be moved to GES which is not only ridiculous considering we are two miles away from RES but separates our child from neighboring kids. We bought our house considering elementary school quality and proximity. Other children living down broad street further away from RES and closer to GES are staying at RES with this option. Does not seem right.
- We live on Fairground Road less than 1/4 mile south of Broad Street. We are much closer to Randolph than Goochland Elementary. Our granddaughter will be a 5th grader for the 2024-2025 school year, so I believe she will have the option to finish at Randolph. That is what we desire and believe is fair.
- We live very close to Randolph (The Preserve Dr). There is only one child in this neighborhood and one future student. There are no other families with small children. We have arranged our work schedules around the bus and it is extremely frustrating that you would move us. Our child would also lose all his friends at an impressionable age. Next time you ask for bonds the answer will be NO. As many politicians found out in the last few years you and the planners will to that people want to be left alone.
- We live within 3 miles from Randolph on Old Mill Road (off Cardwell). We specifically bought our home to be close to Randolph Elementary. Moving our son (currently in 2nd grade) all the way to Goochland Elementary when we live a few minutes from Randolph would be a terrible move and put an unnecessary burden on us and people like us.
- We prefer option 1 because our kids have developed a comfort to the school with friends and teachers. Also, this keeps us at a school that's only 5 min from our house so it just makes sense..
- With this option Crozier is headed to GES, even though they are much closer to RES.
- Without reliable current home construction information in the western part of the county, I hesitate to say whether the boundary would be lasting.
- Without the ability to enlarge the video, many details are difficult to see. The pointer is almost invisible. (HP laptop)



Option 2

Description:

- Elementary live-in utilization ranges from 71.1% (Goochland ES) to 78% (Byrd ES)
- 91.9% of elementary students reside in the boundary of their closest school
- Free/reduced price lunch range from high (33.7% at Goochland ES) to low (18.1% at Randolph ES) is 15.6%

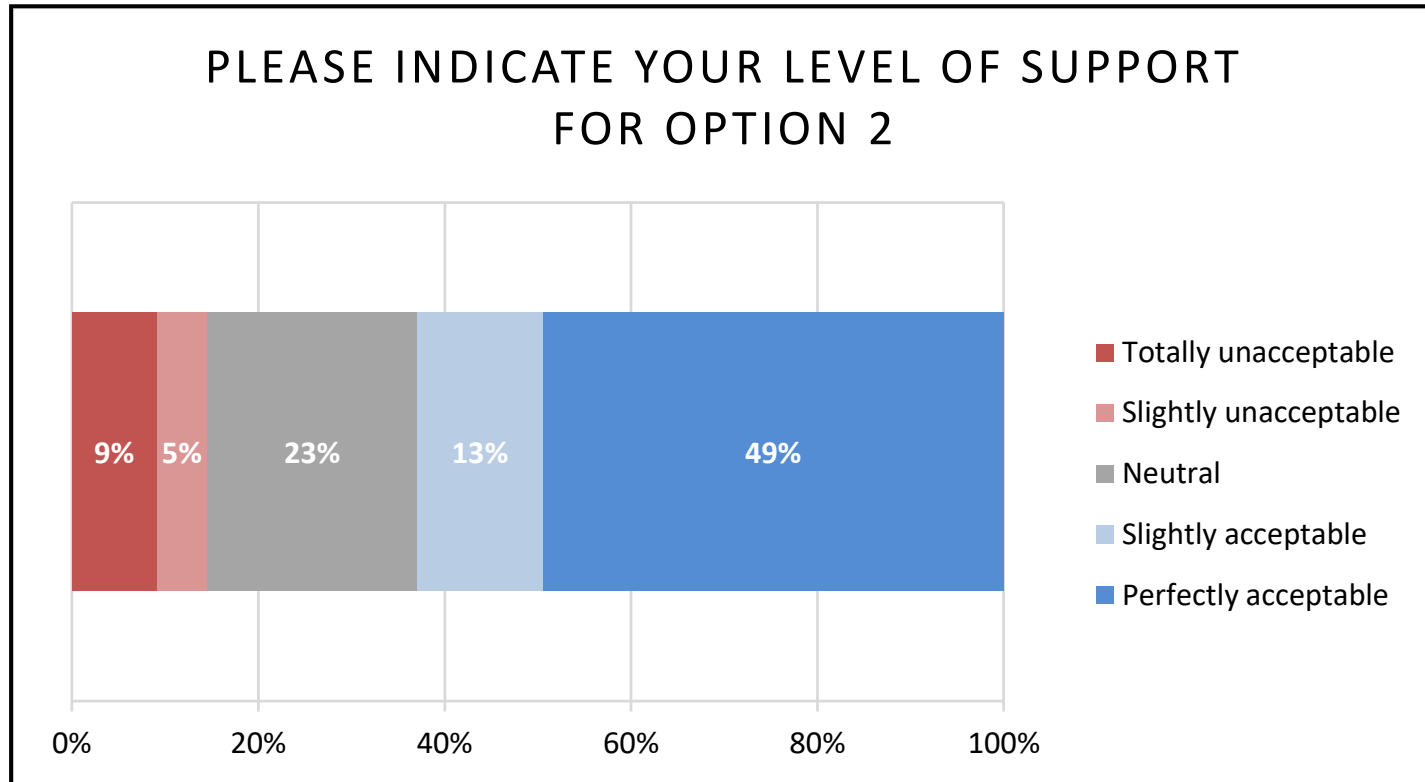


Option 2				
School	Updated K-5 Capacity	K-5 Live-In Enrollment	Utilization	F/R Lunch %
Byrd ES	313	244	78.0%	33.6%
Goochland ES	650	462	71.1%	33.7%
Randolph ES	409	311	76.0%	18.1%
Total/Average	1,372	1,017	74.1%	26.9%



Option 2 - How acceptable is the Option 2 boundary adjustment proposal?

The table below details the level of support for Option 2, based on 186 responses.

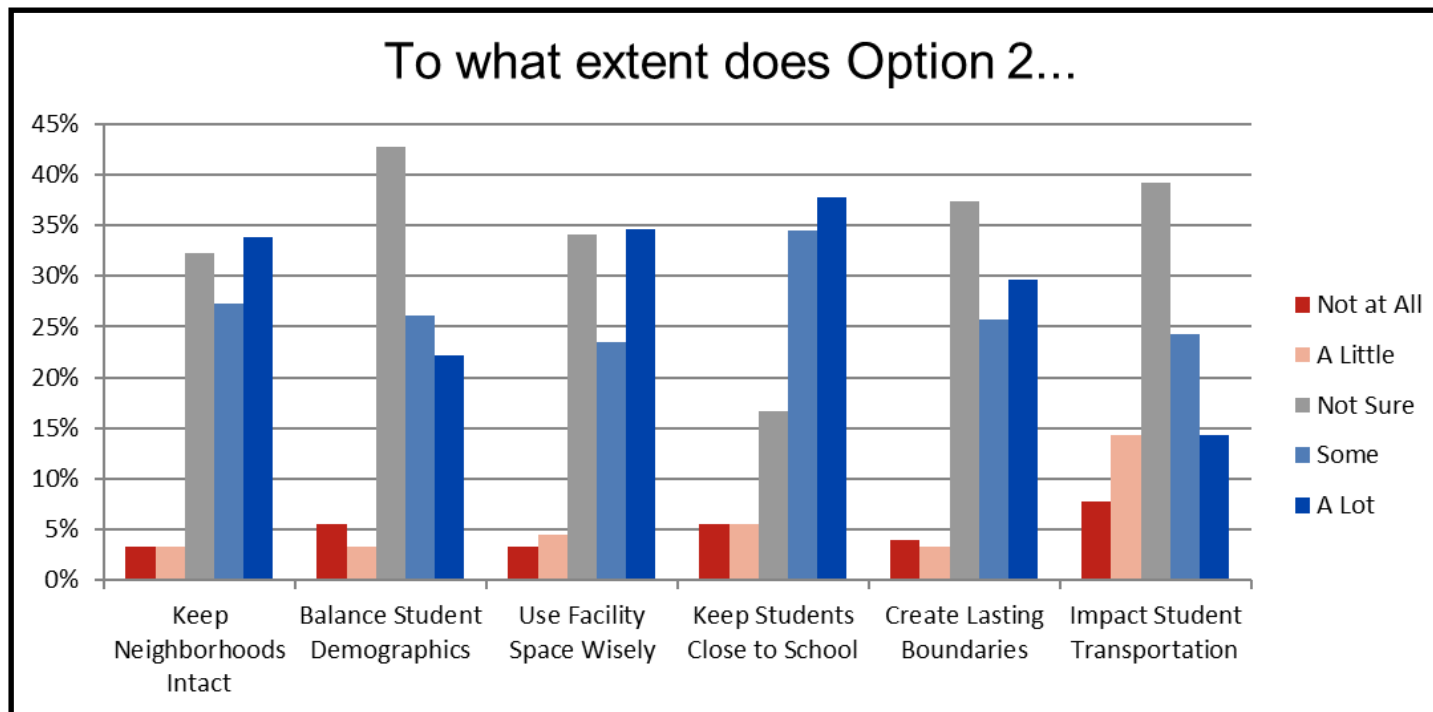




Option 2 - To what extent does Option 2...

- **Keep Neighborhoods Intact**
- **Balance Student Demographics**
- **Use Facility Space Wisely**
- **Keep Students Close to School**
- **Create Lasting Boundaries**
- **Impact Student Transportation**

The results reflected on the table below are based on 181 responses.





Option 2 - Please share your thoughts about the Option 2 boundary adjustment proposal. Details on schools, roads, and neighborhoods are appreciated.

- As the boundaries are now, my child got to school late and gets picked up an hour before school. We are only 5miles from school.
- As the county voted to build only a new GES, as long as the boundary adjustment does not impact the River Road corridor, I'm happy with it.
- Both options look appropriate for the future. 2 of our kids will be in 5th grade at Randolph when this starts. We would like them to finish there with district providing transportation. Other families may feel the same way, please consider letting families make the choice to finish last year at their original elementary school or move to new school.
- Boundaries in option 2 appear less drastic change than option 1
- How much additional traffic would that place on Fairground Road? With current absence of traffic control in place - the mornings could be especially dangerous.
- I cannot know about student demographics beyond F/R price meals. Race/ethnicity is an important factor to consider and those data are not shared presently. Please share this also! Additionally, last row of table should say Total or Average.
- I live in Preserve at Deerfield neighborhood. Again res is closer to our home than ges. This neighborhood don't have very many students going to res (most home owners are retired or have college going students). You can confirm this by looking at last few years of elementary students in our neighborhood. This year is same. Changing their school to GES doesn't make sense.
- Like option 1 it isn't perfect. It does seem to not have people driving through a different school region to get to school so that's nicer. I still think a more gradual transition or grace for kids over 3rd grade would be helpful in easing the boundary change.
- Makes more sense!
- Makes way more sense than option 1. Please use option 2
- My son is I. Third grade at Randolph and it would be terrible to move him for his last year of elementary school.
- Option 2 makes much more sense as it pulls kids who are slightly across boundary lines on either side to the central option.
- Option 2 makes so much sense with proximity to the schools.
- Out of the two options, this is better, fewer families that adore RES will be affected as well as keep distance from the school better.
- RES is the most overcrowded/over-utilized of the elementary schools, a trend that likely will continue given population growth trends, so the plan that does the most to reduce overcrowding/ utilization at RES makes the most sense.
- Same answer as option 1 - our roads are not ready for this increase of home suburbs being built. Causing school transportation to run earlier or later.
- Same as the response just given. There is one student in this neighborhood and only one other future student. Leave us alone!
- These lines seem less arbitrary and leave plenty of room for growth in all schools. To be fair, option 1 also left room for growth in the schools' attendance.
- This looks like it makes a lot more sense than Option 1.
- This makes clearer boundaries on the river side of the county not splitting river road west across two districts until the madeins road crossing. Keeps Shepard town road intact for Randolph as well.
- This makes more sense since the distances to school are more equal than Option 1. This is a preferable option compared to Option 1 because of distances.
- This makes much more sense for kids living on cardwell and the river road corridor to go to their closest school and impact families



Option 2

- living in eastern Goochland working in east of Goochland to be impacted the least
- This one makes more sense. Drawing the Line across the board not down the Border I like this option better.
- This option does not makes sense for our family and where we live in Goochland co.
- This option seems better to me in regards to each students proximity to school. Those students residing off of Perkinsville or Pony Farm are pretty similarly distanced from RES and GES. I would think that transportation times would not be impacted drastically. However, this does leave a greater imbalance when looking at the percentage of students receiving free/reduced lunch. My opinion is that the proximity to school and subsequent transportation time holds greater significance than the slight disproportion in those receiving free/reduced lunch.
- This option seems more balanced geographically now, but it may not take enough students away from Randolph. Could we add more students from Route 6 east of Maidens Rd. to west of Beaverdam Creek Rd & south of Rt. 6 to the Correctional Center.
- This option seems to keep our particular neighborhood/area more intact. We are right in the boundary between RES/GES, and the first option leaves our neighborhood in separate elementary schools from those across the street. Logistically for neighborhoods and transportation, this option makes more sense, but not yet knowing whether there would be a change in class size or logistics within the new GES building because it will be larger with more students makes it difficult to ascertain whether this option is best for our child/family overall.
- This proposal is better in reducing the impact of transportation for the smaller children that are more southeastern of the county. Better option choice!
- This seems like the better option.
- We feel not a good option, again we have a IEP student and we are comfortable and we know who are the future IEP teachers are and this impact our daughters. Plus right many doctors appointments so it would mean leaving class time earlier to make appointments on time. We are closer to randolph which we attend now, and it would a terrible change for us to move to GES... thank you. Please don't move us from randolph.... the Scruggs...
- We live in the James River Landing neighborhood off of Marlin road in the SW portion of the county. Our children currently go to GES and we want them to continue to go to the new GES. Options 1 and 2 seem to do that so we're happy with either, provided our children continue to go to GES.
- We live north of 64 off of pony farm road, our son will be in third grade in 24-25 school year and I would rather he not have to change schools. For my own selfish reasons I would prefer option 1
- While I current live in GES district, when my children were young they attended RES and we lived in the area that is switching to GES (Oakland Drive off Fairground Road) (in both option 1 and 2) we lived much closer to GES. The bus route to RES was super long. This looks like a better plan for that area. The long. Bud ride was tough on my kindergartner and I ended up driving him. Closer to school is better
- Would this help the buses from picking up so early and letting off students?



Please provide any additional feedback you would like the Boundary Adjustment Steering Committee to consider as we work toward a boundary recommendation.

- Again... you are taking my student out of Randolph away from his teachers and friends at an impressionable age. There is only one child in our neighborhood and one future student. The rest of the neighborhood has older kids or retirees. Our lives are arranged around the current system. I hope you all get removed from your positions and elected posts. We left a lawless city where the same crap was happening. I find it ironic that you all are concerned with the same demographic apologist crap that the communists in the city were. When will you understand that people just want to be left alone? Next time you ask for bonds for infrastructure the answer will be no! I work my tail off and I don't have time to come to the meetings like all the other woke mobsters who don't work. Consider thismydissent.-AngryPreserveDriveResident PS: It's right down the road from Randolph
- As I mentioned in prior comments, please let 5th graders stay at original elementary school with district providing transportation. This is very important before transition to middle school. Too many transitions interfere with student success and engagement.
- As long as the River Road corridor continues to go to Randolph, until the county opens a new school on the east end, I have no qualms with whatever map comes out.
- As mentioned in the option comments, transportation time is a significant issue. Not only with the re-zoned elementary areas transportation time be affected, but GMS/GHS transportation time could also be affected. I know that the staggered times are a challenge for many households with both elementary and middle/high students. Re-zoning should not make transportation even more challenging.
- Will there be options for older elementary students to finish their time in elementary school at the school they're currently zoned to? If a student has been at BES or RES since Kindergarten, will they be required to re-zone to GES for 5th grade? An option for them to stay would be good!
- Consider building a new middle school and new high school in eastern goochland to help with the volume of new homes built in the past 2+ years
- I read that exceptions will be available for students currently enrolled that may have to move. I think as long as that is the case, parents will be more open to the change.
- I think you need to consider more time for transition to the boundary changes.
- I would expect higher population growth in the eastern county, all going to RES. Maybe capacity % at RES should be less than GES and BES.
- I'm unable to attend the community meeting. My main concern is that RES becomes richer & whiter no matter which option you choose.
- It might be a factor to consider if the new students is assigned by the new boundary but the family living in those subjected to change locations can choose between the current and the new boundary.
- Keep existing boundaries as they are. Many (including us) purchased homes based on those boundaries.
- None
- Option 2 is best
- Option 2 looks like it makes a lot more sense. Hope you will adopt that.



Please provide any additional feedback you would like the Boundary Adjustment Steering Committee to consider as we work toward a boundary recommendation.

- Option one works best for my family for work and picking up and dropping off children as my and many other families have work schedules that revolve around this.
 - Option two seems to more clearly align with roads and neighborhoods.
 - Please consider or communicate about any Class size and logistics within the new GES building due to having a larger student population. Those students with disabilities will be affected by having a larger population and building size if they move from RES to GES due to the boundary change.
 - Please ensure - and be transparent - about changes to other demographic elements - race/ethnicity and multilanguage learners at the very least.
 - Please let kids living on Cardwell stay at RES.
- the county, which may allow/require more students to attend the new GES.
- There is one child in the Preserve at Deerfield. Relocating him will be more of a detriment to his education than the benefit to the population size at each school.
 - Trying to understand this all however, my child is a current student at Byrd....from the presentation of Option 1 and 2 it doesn't seem like he will be effected.
 - We live in the James River Landing neighborhood off of Marlin road in the SW portion of the county. Our children currently go to GES and we want them to continue to go to the new GES. Options 1 and 2 seem to do that so we're happy with either, provided our children continue to go to GES.

We cannot attend the meeting due to work.

- Removing kids from a 5-10 min commute to 15-20 min is not wise and it's not acceptable in a county that already requires substantial commute times.
- RES is the most overcrowded/over-utilized of the elementary schools, a trend that likely will continue given population growth trends, so the plan that does the most to reduce overcrowding/ utilization at RES makes the most sense.
- Thank you for your excellent communication. I like the consideration of the Fairground Road communities that are closer to Goochland Elementary School than Randolph are moving over to Goochland. This is a time saver for many families.
- The boundary committee needs to think about the future of a new BES and RES. I don't see too much changing for a new BES, other than a location. A new RES would probably move farther east in