



ENROLLMENT PROJECTIONS REPORT

GOOCHLAND COUNTY PUBLIC SCHOOLS

JANUARY 31, 2022



COOPERATIVE
STRATEGIES
ASSESS • PLAN • FUND • BUILD

TABLE OF CONTENTS

SECTION	PAGE
ACKNOWLEDGEMENTS	2
EXECUTIVE SUMMARY	3
COMPARISON	5
ENROLLMENT PROJECTION METHODOLOGY	6
U.S. CENSUS	8
GENERAL DEMOGRAPHICS	20
ESTIMATED SCHOOL-AGED POPULATION CHANGE	21
HOUSING DATA	23
RESIDENT LIVE BIRTH DATA	29
SURVIVAL RATIOS	31
HISTORICAL ENROLLMENT	32
PROJECTED ENROLLMENT	34
ENROLLMENT BY SCHOOL OF ATTENDANCE	43
CONCLUSION	52
APPENDIX	53

ACKNOWLEDGMENTS

On behalf of Cooperative Strategies, we would like to extend our appreciation to the Goochland County Public Schools for the opportunity to assist them in developing this Enrollment Projections Report which includes projections by school of attendance. As a planning team, we hope that this document will serve the Goochland County Public Schools for years to come.

COOPERATIVE STRATEGIES

Ann Hoffsis, REFP, Chief Operating Officer
Matt Sachs, Senior Associate Director
Galina Lyogky, Senior Associate

4675 Lakehurst Court, Suite 200
Dublin, OH 43016

P. 614.798.8828

www.coopstrategies.com

EXECUTIVE SUMMARY

The enrollment projections by school of attendance for the Goochland County Public Schools included in this report were developed using the cohort survival methodology and Cooperative Strategies' custom enrollment projection software, S.T.E.P. [Student Trends & Enrollment Projections]. This custom software was developed in collaboration with The Ohio State University and is based on industry best practices as well as the national experience Cooperative Strategies has with schools, school Divisions, and state agencies.

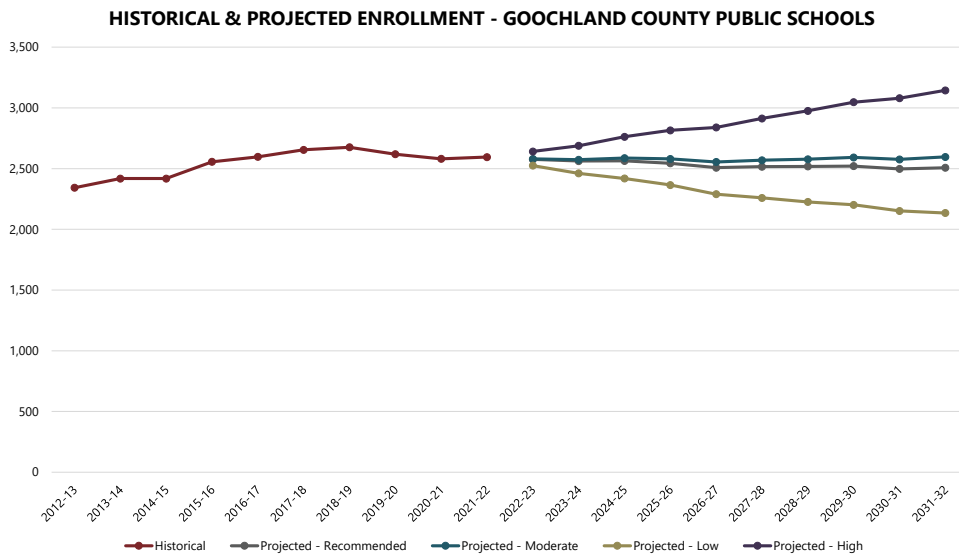


The Goochland County Public Schools is a school Division serving 2,595 PK—12 students in Byrd Elementary, Goochland Elementary, Randolph Elementary, Goochland Middle, and Goochland High in the 2021-22 school year.

The projections presented in this report are meant to serve as a planning tool for the future, and represent the most likely direction of the Division. Enrollment projections were developed using the cohort survival methodology and by analyzing the following data outlined in this report:

- Historical enrollment by school, by grade, by year (2012-13 through 2021-22)
- Resident live birth data through 2020, by ZIP codes
- Census data
- Building permits

Enrollment in the Goochland County Public Schools has increased by 252 students from the 2012-13 to the 2021-22 school year. Since the 2018-19 school year, enrollment has decreased by 81 students. Based on the cohort survival methodology, enrollment is projected to decrease over the next ten years.



As with any projection, the Division should pay close attention to the variables associated with determining enrollment projections discussed in this document. Any one or more of these factors can increase or decrease enrollment within the Goochland County Public Schools. It is recommended that the data contained in this report be reviewed on an annual basis to determine how more recent trends and any new housing development will impact the enrollment.

When projecting future enrollments, it is vital to track the number of live births, the amount of new housing activity, and the change in household composition. In addition, any of the following factors could cause a significant change in projected student enrollment:

- Boundary adjustments
- New school openings
- School closures
- Changes / additions in program offerings
- Preschool programs
- Changes in grade configuration
- Interest rates / unemployment shifts
- Intra- and inter-District transfers
- Magnet / charter / private school openings or closures
- Zoning changes
- Annexations
- Unplanned new housing activity
- Planned, but not built, housing
- School voucher programs
- Pandemics

Obviously, certain factors can be gauged and planned for far better than others. For instance, it may be relatively straightforward to gather housing data from local builders regarding the total number of lots in a planned subdivision and calculate the potential student yield. However, planning for changes in the unemployment rate, and how these may either boost or reduce public school enrollment, proves more difficult. In any case, it is essential to gather a wide variety of information in preparation for producing enrollment projections.

When looking ahead at a school Division's enrollment over the next two, five, or ten years, it is helpful to approach the process from a global perspective. For example: How many new homes have been constructed each year? How many births have occurred each year in relation to the resident population? Is housing experiencing a turnover—if so, what is the composition of families moving in/out? Are more or less students attending private school or being home-schooled? What has the unemployment rate trend been over the past ten years? What new educational policies are in place that could affect student enrollment figures?

The cohort survival methodology is a standard methodology used throughout the educational planning industry to project enrollment. The enrollment projections developed for the Goochland County Public Schools were developed using the cohort survival method.

COMPARISON

Enrollment projections were previously provided to the Goochland County Public Schools in July of 2020. The following tables illustrate the comparison of actual versus projected enrollment for the 2021-22 school year. Overall, the Division-wide recommended projected enrollment had an accuracy rate of 98.52% for grades K-12 and 98.84% for grades PK-12. The high enrollment projections were more accurate with an accuracy rate of 99.12 % for grades K-12 and 98.88% for grades PK-12. Amongst the PK-12 population, the most significant difference occurred at 12th grade with a difference of 21 students, or 9.63% (recommended); or a difference of 19 students, or 8.72% (high).

Based on the comparison of the recommended K-12 actual versus projected enrollment for the 2021-22 school year, the school with the most significant difference was Randolph Elementary with a difference of 17 students, or 3.86% more than projected.

Based on the comparison of the recommended PK-12 actual versus projected enrollment for the 2021-22 school year, Goochland Elementary was the school with the greatest difference between actual and projected enrollment with 18 students, or 4.99% fewer than projected.

DIVISION-WIDE COMPARISON BY GRADE

	2021-22 Actual	2021-22 EP (Rec)	Difference (Rec)	(Rec) % Difference (Absolute)	2021-22 EP (High)	Difference (High)	(High) % Difference (Absolute)
PK	94	101	-7	7.45%	101	-7	7.45%
K	149	150	-1	0.67%	158	-9	6.04%
1	153	146	7	4.58%	152	1	0.65%
2	172	166	6	3.49%	165	7	4.07%
3	173	179	-6	3.47%	186	-13	7.51%
4	203	194	9	4.43%	201	2	0.99%
5	178	179	-1	0.56%	184	-6	3.37%
6	187	198	-11	5.88%	203	-16	8.56%
7	189	188	1	0.53%	192	-3	1.59%
8	233	226	7	3.00%	229	4	1.72%
9	221	215	6	2.71%	220	1	0.45%
10	218	223	-5	2.29%	229	-11	5.05%
11	207	203	4	1.93%	205	2	0.97%
12	218	197	21	9.63%	199	19	8.72%
K-12 Total	2,501	2,464	37	1.48%	2,523	-22	0.88%
PK-12 Total	2,595	2,565	30	1.16%	2,624	-29	1.12%

COMPARISON BY SCHOOL (K-12)

	2021-22 Actual	2021-22 EP (Rec)	Difference (Rec)	(Rec) % Difference (Absolute)	2021-22 EP (High)	Difference (High)	(High) % Difference (Absolute)
Byrd Elementary	266	260	6	2.26%	255	11	4.14%
Goochland Elementary	322	331	-9	2.80%	352	-30	9.32%
Goochland High	864	838	26	3.01%	853	11	1.27%
Goochland Middle	609	612	-3	0.49%	624	-15	2.46%
Randolph Elementary	440	423	17	3.86%	439	1	0.23%
PK-12 Total	2,501	2,464	37	1.48%	2,523	-22	0.88%

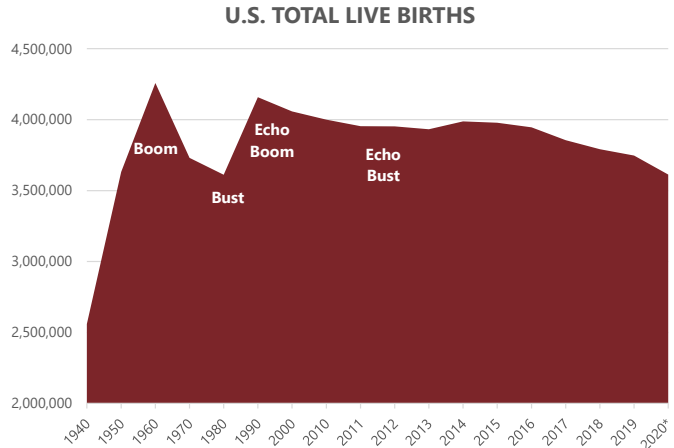
COMPARISON BY SCHOOL (PK-12)

	2021-22 Actual	2021-22 EP (Rec)	Difference (Rec)	(Rec) % Difference (Absolute)	2021-22 EP (High)	Difference (High)	(High) % Difference (Absolute)
Byrd Elementary	300	295	5	1.67%	290	10	3.33%
Goochland Elementary	361	379	-18	4.99%	400	-39	10.80%
Goochland High	864	838	26	3.01%	853	11	1.27%
Goochland Middle	609	612	-3	0.49%	624	-15	2.46%
Randolph Elementary	461	441	20	4.34%	457	4	0.87%
PK-12 Total	2,595	2,565	30	1.16%	2,624	-29	1.12%

ENROLLMENT PROJECTION METHODOLOGY

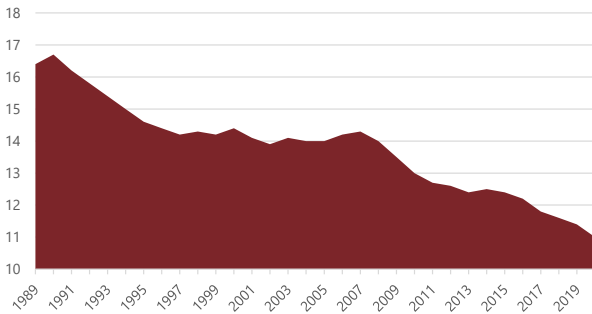
Introduction

Tracing the landscape of the country’s public school enrollment back over the past fifty years reveals demographic, economic, and social changes. The United States as a whole continues to undergo major shifts in public student enrollment, due in large part to past events including the baby boom, the availability and use of birth control, and the development of suburbs. The baby boom of the late 1940s and 50s was followed by the baby bust of the 1960s and 70s. This gave rise to the echo baby boom of the 1980s.



Source: CDC, National Vital Statistics Report; *CDC, National Vital Statistics System

U.S. POPULATION - LIVE BIRTH RATE PER 1,000 POPULATION



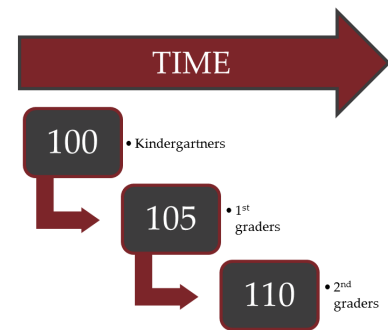
Source: CDC, National Vital Statistics Report; CDC, National Vital Statistics System

Nationwide, districts have experienced the effects of the echo baby bust of the 1990s. From the 1950s to the 1970s, a dramatic downsizing of the family unit occurred. A direct result was the declining school enrollment of the 1970s and 1980s. As of the 2010 Census, the size of a family was at an all-time low of 3.14 persons. The live birth rate increased for the first time in several years in 1998 and increased again in 2000 and 2006. However, the birth rate resumed a descending pattern in 2008 and reached an all-time low of 11.0 (per 1,000) in 2020.

Cohort Survival Method

The cohort survival methodology (sometimes referred to as the grade progression ratio method) is a widely used enrollment projection model that is used by many school districts and state and federal agencies to project K-12 enrollment.

A cohort is a group of persons [in this case, students]. The cohort survival enrollment projection methodology uses historic live birth data and historic student enrollment to “age” a known population or cohort throughout the school grades. For instance, a cohort begins when a group of kindergarteners enrolls in grade K and moves to first grade the following year, second grade the next year, and so on.



A “survival ratio” is developed to track how this group of students increased or decreased in number as they moved through the grade levels. By developing survival ratios for each grade transition [i.e. 2nd to 3rd grade] over a ten year period of time, patterns emerge. A projection ratio for each grade transition is developed based on analysis of the survival ratios. The projection ratios are used as a multiplier in determining future enrollment.

For example, if student enrollment has consistently increased from the 8th to the 9th grade over the past ten years, the survival ratio would be greater than 100% and could be multiplied by the current 8th grade enrollment to develop a projection for next year’s 9th grade. This methodology can be carried through to develop ten years of projection figures. Because there is not a grade cohort to follow for students coming into kindergarten, resident live birth counts are used to develop a birth-to-kindergarten survival ratio. Babies born five years previous to the kindergarten class are compared in number, and a ratio can be developed to project future kindergarten enrollments.

The cohort survival method is useful in areas where population is stable [relatively flat, growing steadily, or declining steadily], and where there have been no significant fluctuations in enrollment, births, and housing patterns from year to year. The cohort survival methodology inherently considers the net effects of factors such as migration, housing, dropouts, transfers to and from charter schools, open enrollment, and deaths. This methodology does not assume changes in policies, program offerings, or future changes in housing and migration patterns.

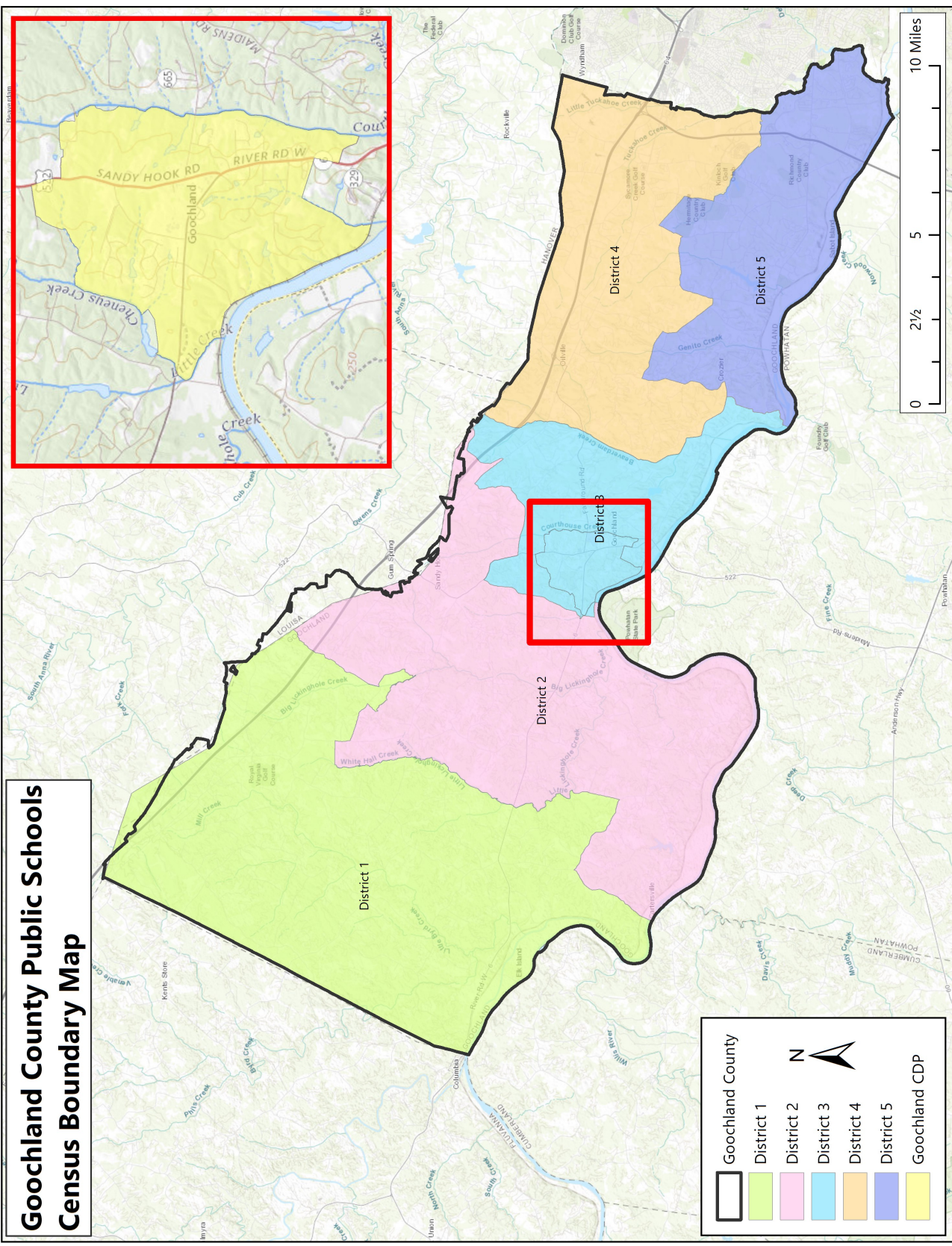
U.S. CENSUS

This section presents data from the United States Census Bureau and estimates from the American Community Survey (ACS) to demonstrate the demographic characteristics and historic trends of the population within the Division boundary. While the Census is conducted every 10 years, the American Community Survey collects social, housing, educational, occupational, financial, and other demographic data from over 3.5 million households throughout the nation monthly and is compiled yearly, as mandated by the U.S. Constitution. This data helps public officials, federal/state/local agencies, school districts, etc. assess historic trends and plan for the future.

The Goochland County Public Schools is located in Goochland County, Virginia. It serves Districts 1—5 and Goochland CDP*. The data on the following pages is aggregated and color-coordinated by the boundaries show in the map on the following page.

The release of the 2020 Census data and 2020 ACS estimates was postponed and was not readily accessible to the public at the time this report was developed. As such, the latest data available is shown in the tables on the following pages.

*Census Designated Place

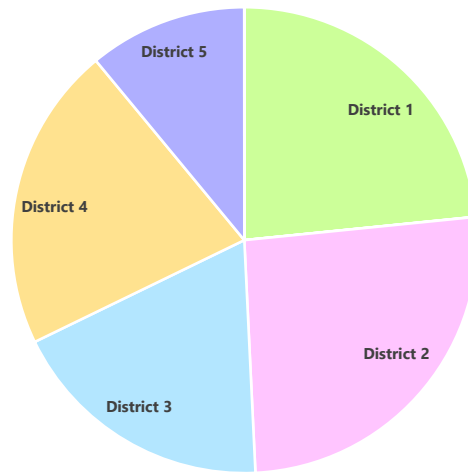


Students by Municipality

The table and graphs below show how many Goochland County Public Schools students live in each municipality, by year, according to student data.* The percentages for each municipality are based on the total students in the Goochland County Public Schools. The total at the bottom of the table indicates the total number of students in the Division, not the sum of the students living in the municipalities.

Historical Enrollment by Census Municipality	2021-22
Goochland County Public Schools Boundary	2,592 99%
Goochland County	2,592 99%
District 1	596 23%
District 2	658 25%
District 3	473 18%
District 4	540 21%
District 5	280 11%
Goochland CDP	149 6%
Total Students*	2,626

Source: Goochland County Public Schools Student Data
 *This total reflects the amount of District students, not a total of the values in the table.



**Student data and official enrollment are taken at different points in the year, so student data counts do not necessarily match official enrollment counts.*

Population

According to the 2019 ACS estimates, since the 2010 Census, the total population and median age increased in the Division boundary.

Based on the 2019 estimates, since the 2010 Census, the number of children under the age of 5 has decreased by 17%, the number of children ages 5 - 19 has decreased by 2%, and the number of adults ages 65 and over has increased by 53% in the Division boundary.

The 2000 and 2010 population counts and 2019 population estimates are shown in the table below.

Population		Under 5 years	5 to 19 years	20 to 64 years	65 years and over	Total Population	Median Age
Goochland County Public Schools Boundary	2000**	-	-	-	-	-	-
	2010	1,012	3,776	13,692	3,237	21,717	45.2
	2019*	841	3,699	13,383	4,942	22,865	48.3
	Trend						
Goochland County	2000	864	2,973	10,959	2,067	16,863	-
	2010	1,012	3,776	13,692	3,237	21,717	45.2
	2019*	841	3,699	13,383	4,942	22,865	48.3
	Trend						
District 1	2000	154	656	2,034	401	3,245	-
	2010	195	797	2,556	540	4,088	43.4
	2019*	196	840	2,318	750	4,104	43.7
	Trend						
District 2	2000	265	755	2,270	535	3,825	-
	2010	258	851	2,719	630	4,458	42.7
	2019*	126	544	2,058	708	3,436	52.8
	Trend						
District 3	2000	123	369	2,751	288	3,531	-
	2010	152	563	3,059	389	4,163	41.5
	2019*	154	671	2,933	597	4,355	43.8
	Trend						
District 4	2000	150	563	1,781	395	2,889	-
	2010	228	682	2,658	699	4,267	47.9
	2019*	346	947	3,561	1,331	6,185	45.8
	Trend						
District 5	2000	172	630	2,123	448	3,373	-
	2010	179	883	2,700	979	4,741	50.9
	2019*	19	697	2,513	1,556	4,785	57.5
	Trend						
Goochland CDP	2000**	-	-	-	-	-	-
	2010	54	220	494	93	861	39.4
	2019*	74	223	530	71	898	43.3
	Trend						

Source: U.S. Census

*Source: American Community Survey 5-Year Estimates (2019)

**data not available

Race / Ethnicity & Language

The table below shows race and ethnic distribution throughout the Goochland County Public Schools boundary and the municipalities that are served by the Division.

Race & Ethnicity		White alone	Black or African American alone	American Indian and Alaska Native alone	Asian alone	Native Hawaiian and Other Pacific Islander alone	Some other race alone	Two or more races	Total Population	Hispanic Population
Goochland County Public Schools Boundary	2000**	-	-	-	-	-	-	-	-	-
	2010	77.5%	19.2%	0.2%	1.0%	0.0%	0.8%	1.2%	21,717	2.1%
	2020^	78.1%	13.2%	0.3%	2.0%	0.0%	1.5%	4.9%	24,727	3.5%
Goochland County	2000	73.0%	25.8%	0.3%	0.6%	0.0%	0.0%	0.4%	16,863	0.9%
	2010	77.5%	19.2%	0.2%	1.0%	0.0%	0.8%	1.2%	21,717	2.1%
	2020^	78.1%	13.2%	0.3%	2.0%	0.0%	1.5%	4.9%	24,727	3.5%
District 1	2000	74.8%	23.9%	0.0%	0.9%	0.0%	0.0%	0.4%	3,245	0.9%
	2010	75.4%	21.5%	0.5%	0.6%	0.0%	0.6%	1.4%	4,088	1.8%
	2020^	74.4%	17.2%	0.4%	0.6%	0.0%	1.3%	6.1%	4,681	2.7%
District 2	2000	57.9%	40.8%	0.6%	0.0%	0.0%	0.0%	0.6%	3,825	0.9%
	2010	70.1%	27.3%	0.2%	0.7%	0.0%	0.7%	1.1%	4,458	2.2%
	2020^	69.6%	23.4%	0.3%	0.9%	0.0%	0.7%	4.9%	4,395	2.9%
District 3	2000	68.6%	30.1%	0.6%	0.3%	0.0%	0.0%	0.5%	3,531	0.4%
	2010	68.2%	29.1%	0.2%	1.0%	0.0%	0.3%	1.1%	4,163	1.4%
	2020^	81.1%	12.5%	0.3%	0.8%	0.0%	1.8%	3.6%	4,229	3.1%
District 4	2000	81.7%	17.8%	0.0%	0.5%	0.0%	0.0%	0.0%	2,889	1.6%
	2010	82.8%	12.5%	0.2%	1.0%	0.1%	1.7%	1.7%	4,267	3.8%
	2020^	80.6%	9.2%	0.3%	2.5%	0.0%	2.3%	5.2%	5,826	4.8%
District 5	2000	85.3%	13.1%	0.0%	1.4%	0.0%	0.0%	0.2%	3,373	0.5%
	2010	89.4%	7.2%	0.2%	1.8%	0.0%	0.6%	0.8%	4,741	1.4%
	2020^	82.8%	6.6%	0.2%	4.5%	0.0%	1.5%	4.4%	5,596	3.5%
Goochland CDP	2000**	-	-	-	-	-	-	-	-	-
	2010	84.6%	9.6%	0.6%	2.4%	0.0%	0.3%	2.4%	861	2.6%
	2020^	83.5%	5.9%	0.8%	2.1%	0.1%	2.2%	5.3%	899	3.2%

Source: U.S. Census

^Source: U.S. Census, 2020 Redistricting Data

**data not available

According to 2019 ACS estimates, most of the population in the Division boundary speaks only English. The table below shows the languages spoken at home.

Languages Spoken at Home (2019 Estimates)	Goochland County Public Schools Boundary	Goochland County	District 1	District 2	District 3	District 4	District 5	Goochland CDP
Population 5 years and over	22,024	22,024	3,908	3,310	4,201	5,839	4,766	824
Speak only English	95.0%	95.0%	97.6%	99.1%	98.7%	92.6%	89.5%	95.8%
Speak a language other than English	5.0%	5.0%	2.4%	1%	1.3%	7.4%	10.5%	4.2%
Spanish	453	453	33	0	26	292	102	22
Other Indo-European languages	350	350	17	20	29	44	240	13
Asian and Pacific Island languages	253	253	28	11	0	97	117	0
Other languages	55	55	14	0	0	0	41	0

Source: American Community Survey 5-Year Estimates (2019)

Housing & Families

According to the 2019 ACS estimates, approximately 93% of the homes in the Goochland County Public Schools boundary are single-unit structures while 4% of the homes are 2-or-more-unit structures. Nearly 25% of the Division boundary's households have at least one school-aged (or younger) child in them.

Housing & Families (2019 Estimates)	Goochland County Public Schools Boundary	Goochland County	District 1	District 2	District 3	District 4	District 5	Goochland CDP
Total Households	8,506	8,506	1,450	1,457	1,202	2,367	2,030	290
1-unit structures	92.6%	92.6%	92.9%	90.6%	95.8%	89.4%	95.7%	88.6%
2-or-more-unit structures	3.5%	3.5%	0.0%	0.0%	0.0%	9.5%	3.5%	0.0%
Mobile homes and all other types	3.9%	3.9%	7.1%	9.4%	4.2%	1.1%	0.8%	11.4%
Owner occupied:	84.9%	84.9%	82.8%	87.4%	83.8%	80.4%	90.4%	77.6%
Renter occupied:	15.1%	15.1%	17.2%	12.6%	16.2%	19.6%	9.6%	22.4%
Households with one or more people under 18 years	25.3%	25.3%	33.0%	22.9%	33.7%	25.2%	16.8%	46.6%
Average Family Size	3.05	3.05	3.41	2.85	3.33	3.16	2.65	3.39
Average Household Size	2.55	2.55	2.82	2.32	2.79	2.61	2.32	3.10

Source: American Community Survey 5-Year Estimates (2019)

According to the 2019 ACS estimates, the average family size and average household size are estimated to have increased in the Division boundary since the 2010 Census.

The number of occupied and vacant housing units in the Division boundary has increased in tandem with the number of total housing units.

Family/Household Size		Average Family Size	Average Household Size
Goochland County Public Schools Boundary	2000**	-	-
	2010	2.88	2.54
	2019*	3.05	2.55
	Trend		
Goochland County	2000	2.88	2.51
	2010	2.88	2.54
	2019*	3.05	2.55
	Trend		
District 1	2000	2.93	2.52
	2010	2.90	2.52
	2019*	3.41	2.82
	Trend		
District 2	2000	3.05	2.60
	2010	3.02	2.61
	2019*	2.85	2.32
	Trend		
District 3	2000	2.83	2.45
	2010	2.96	2.58
	2019*	3.33	2.79
	Trend		
District 4	2000	2.83	2.49
	2010	2.83	2.49
	2019*	3.16	2.61
	Trend		
District 5	2000	2.75	2.49
	2010	2.76	2.51
	2019*	2.65	2.32
	Trend		
Goochland CDP	2000	-	-
	2010	3.22	2.68
	2019*	3.39	3.10
	Trend		

Source: U.S. Census

*Source: American Community Survey 5-Year Estimates (2019)

**data not available

Housing Occupancy		Total housing units	Occupied housing units	Vacant housing units
Goochland County Public Schools Boundary	2000**	-	-	-
	2010	8,618	7,998	620
	2019*	9,290	8,506	784
	Trend			
Goochland County	2000	6,555	6,158	397
	2010	8,618	7,998	620
	2019*	9,290	8,506	784
	Trend			
District 1	2000	1,425	1,282	143
	2010	1,783	1,618	165
	2019*	1,637	1,450	187
	Trend			
District 2	2000	1,512	1,414	98
	2010	1,844	1,685	159
	2019*	1,688	1,457	231
	Trend			
District 3	2000	1,022	996	26
	2010	1,180	1,119	61
	2019*	1,232	1,202	30
	Trend			
District 4	2000	1,198	1,157	41
	2010	1,836	1,711	125
	2019*	2,607	2,367	240
	Trend			
District 5	2000	1,398	1,309	89
	2010	1,975	1,865	110
	2019*	2,126	2,030	96
	Trend			
Goochland CDP	2000	-	-	-
	2010	338	321	17
	2019*	308	290	18
	Trend			

Source: U.S. Census

*Source: American Community Survey 5-Year Estimates (2019)

**data not available

Industry & Occupation

The table below illustrates the types of industry and occupation in the Goochland County Public Schools boundary and the areas it serves. 2019 estimates are calculated for the civilian employed population 16 years and over.

Industry & Occupation for the Civilian Employed Population 16 Years and Over, (2019 Estimates)	Goochland County Public Schools Boundary	Goochland County	District 1	District 2	District 3	District 4	District 5	Goochland CDP
Total population	22,865	22,865	4,104	3,436	4,355	6,185	4,785	898
Civilian employed population, 16 years and over	11,064	11,064	2,178	1,917	1,678	3,093	2,198	388
Industry								
Agriculture, forestry, fishing and hunting, and mining	2.0%	2.0%	2.5%	3.3%	0.4%	3.1%	0.0%	0.0%
Construction	9.2%	9.2%	19.1%	10.7%	6.0%	7.0%	3.6%	12.9%
Manufacturing	6.0%	6.0%	5.6%	3.1%	8.9%	5.0%	7.9%	21.1%
Wholesale trade	2.9%	2.9%	0.9%	3.7%	1.0%	5.2%	2.3%	0.0%
Retail trade	11.8%	11.8%	14.9%	12.4%	11.4%	11.3%	9.2%	1.0%
Transportation and warehousing, and utilities	4.1%	4.1%	5.1%	3.7%	7.9%	2.0%	3.5%	12.1%
Information	2.0%	2.0%	1.9%	1.6%	4.0%	2.4%	0.5%	8.8%
Finance and insurance, and real estate and rental and leasing	10.1%	10.1%	4.4%	7.5%	13.1%	8.7%	17.8%	26.8%
Professional, scientific, and management, and administrative and waste management services	13.1%	13.1%	8.5%	10.9%	8.8%	14.9%	20.4%	0.0%
Educational services, and health care and social assistance	22.7%	22.7%	23.3%	25.6%	19.9%	20.9%	24.2%	13.9%
Arts, entertainment, and recreation, and accommodation and food services	6.1%	6.1%	4.8%	6.6%	4.1%	8.3%	5.4%	0.0%
Other services, except public administration	4.4%	4.4%	6.4%	3.5%	4.1%	3.6%	4.3%	3.4%
Public administration	5.7%	5.7%	2.6%	7.3%	10.5%	7.6%	0.9%	0.0%
Occupation								
Management, business, science, and arts occupations	45.4%	45.4%	34.8%	35.2%	43.7%	45.8%	65.7%	69.1%
Service occupations	12.9%	12.9%	6.3%	15.5%	18.8%	14.9%	9.8%	5.2%
Sales and office occupations	23.3%	23.3%	23.1%	29.4%	20.8%	23.0%	20.4%	10.6%
Natural resources, construction, and maintenance occupations	9.8%	9.8%	18.8%	10.2%	5.7%	11.6%	1.0%	0.0%
Production, transportation, and material moving occupations	8.7%	8.7%	17.0%	9.7%	11.1%	4.7%	3.2%	15.2%

Source: American Community Survey 5-Year Estimates (2019)

Financial Status

According to the U.S. Census Bureau, earnings come from a job (salary/wages) while income also includes payments such as "Social Security, pensions, child support, public assistance, annuities, money derived from rental properties, interest and dividends." The table below shows income, earnings, and poverty status in the ACS 2019 estimates.

Financial Status (2019 Estimates)	Goochland County Public Schools Boundary	Goochland County	District 1	District 2	District 3	District 4	District 5	Goochland CDP
Earnings								
Population 16 years and over with earnings	12,532	12,532	2,246	1,993	2,250	3,466	2,577	436
Full-time, year-round workers with earnings	7,934	7,934	1,564	1,487	1,364	2,291	1,228	371
\$1 to \$9,999 or less	1.4%	1.4%	0.0%	1.0%	4.3%	1.8%	0.0%	0.0%
\$10,000 to \$14,999	1.7%	1.7%	2.6%	0.0%	6.0%	0.4%	0.0%	1.1%
\$15,000 to \$24,999	10.3%	10.3%	17.8%	12.9%	5.8%	4.2%	14.1%	11.9%
\$25,000 to \$34,999	9.9%	9.9%	15.6%	7.7%	11.7%	10.3%	2.4%	5.1%
\$35,000 to \$49,999	17.8%	17.8%	20.4%	23.4%	15.5%	19.2%	7.9%	0.0%
\$50,000 to \$64,999	16.2%	16.2%	18.3%	19.4%	12.5%	18.2%	9.9%	8.6%
\$65,000 to \$74,999	7.2%	7.2%	8.6%	4.0%	10.0%	5.7%	9.1%	8.6%
\$75,000 to \$99,999	12.8%	12.8%	11.8%	16.8%	8.4%	16.6%	6.8%	18.9%
\$100,000 or more	22.7%	22.7%	4.9%	14.7%	25.8%	23.6%	49.7%	45.8%
Median Earnings	\$42,609	\$42,609	\$34,595	\$48,204	\$38,137	\$46,108	\$48,750	\$80,236
Household Income								
Total Households	8,506	8,506	1,450	1,457	1,202	2,367	2,030	290
Less than \$10,000	4.0%	4.0%	4.8%	3.0%	0.7%	3.3%	6.7%	1.7%
\$10,000 to \$14,999	4.3%	4.3%	8.4%	8.4%	1.5%	2.9%	1.9%	1.4%
\$15,000 to \$24,999	5.3%	5.3%	7.6%	4.3%	8.7%	4.1%	4.0%	0.0%
\$25,000 to \$34,999	4.7%	4.7%	4.7%	5.4%	1.7%	5.9%	4.5%	1.4%
\$35,000 to \$49,999	7.4%	7.4%	9.2%	9.0%	12.1%	4.9%	5.2%	7.2%
\$50,000 to \$74,999	14.5%	14.5%	21.0%	8.0%	21.7%	18.5%	5.8%	28.6%
\$75,000 to \$99,999	12.4%	12.4%	16.9%	14.1%	13.1%	12.1%	7.9%	10.0%
\$100,000 to \$149,999	21.8%	21.8%	20.6%	26.8%	18.9%	24.7%	17.6%	15.9%
\$150,000 to \$199,999	8.6%	8.6%	4.8%	9.2%	10.6%	8.3%	9.9%	14.8%
\$200,000 or more	16.9%	16.9%	2.0%	11.9%	11.1%	15.4%	35.5%	19.0%
Median income (dollars)	\$93,994	\$93,994	\$69,449	\$96,131	\$85,288	\$93,894	\$131,310	-
Poverty Status								
% below poverty level	5.2%	5.2%	3.8%	5.6%	4.2%	3.5%	9.2%	1.0%
Under 18 years	5.0%	5.0%	3.7%	0.0%	8.8%	1.5%	14.9%	0.0%
18 to 64 years	4.9%	4.9%	3.1%	5.9%	3.4%	4.6%	7.3%	0.7%
65 years and over	6.3%	6.3%	6.4%	9.7%	1.4%	2.0%	10.3%	7.0%
Unemployment Rate								
Population 20 to 64 years	3.5%	3.5%	3.9%	0.6%	6.0%	1.9%	5.9%	0.0%

Source: American Community Survey 5-Year Estimates (2019)

Computer / Internet Access

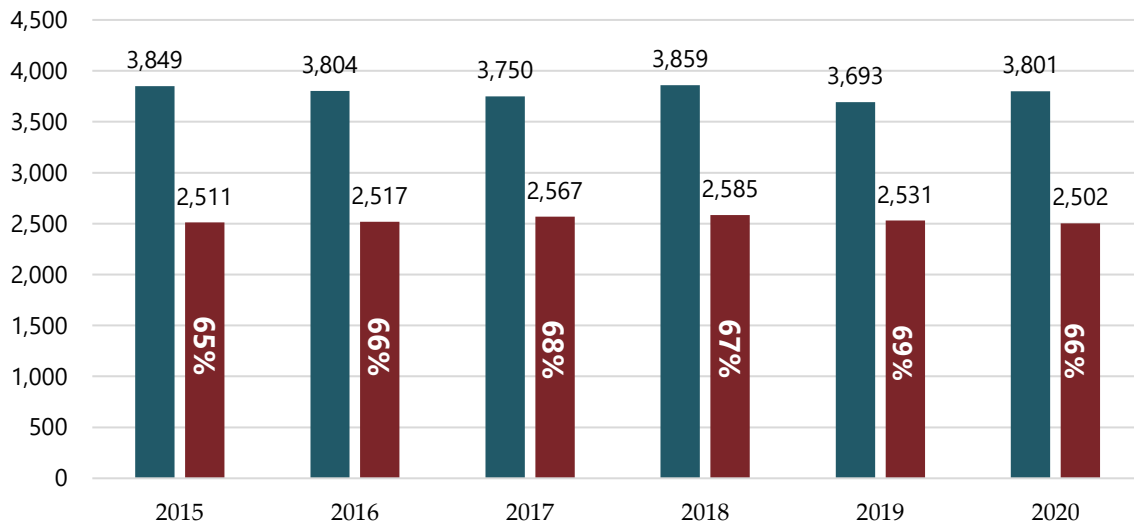
The table below shows the presence of a computer and/or internet subscription in households in the geographies served by the Division, according to the 2019 ACS estimates. Percentages shown are based on total households.

% of Total Households with Internet/Computers (2019 Estimates)	Goochland County Public Schools Boundary	Goochland County	District 1	District 2	District 3	District 4	District 5	Goochland CDP
Has a Computer	90.8%	90.8%	83.0%	80.7%	92.4%	96.6%	95.8%	96.9%
Has an Internet subscription	83.4%	83.4%	75.0%	73.0%	84.2%	84.5%	95.0%	94.1%
Has no Internet Subscription	7.4%	7.4%	7.9%	7.8%	8.2%	12.1%	0.8%	2.8%
Has no Computer	9.2%	9.2%	17.0%	19.3%	7.6%	3.4%	4.2%	3.1%

Source: American Community Survey 5-Year Estimates (2019)

The graph below illustrates the Goochland County school age (5-19 year old) population, based on population estimated prepared by the University of Virginia Weldon Cooper Center for Public Service, compared to the Goochland County Public Schools K-12 enrollment for 2015 through 2020. Based on this information, from 2015 through 2020, between 65% and 69% of the school age population has been enrolled in Goochland County Public Schools.

PERCENTAGE OF GOOCHLAND CO. YOUTH IN PUBLIC SCHOOL



Source: Goochland County Public Schools; UVA Weldon Cooper Center for Public Service

GENERAL DEMOGRAPHICS

The following information represents block group estimates created from market research and U.S. Census data obtained from the Environmental Systems Research Institute [ESRI]. ESRI provides a yearly update to their demographic data in increments of five years. To make updates to their demographic data set, they use American Community Survey [ACS] data that takes a series of monthly sample surveys but only from areas with populations of 65,000 or more. One year of ACS data is a period estimate as a twelve-month average, rather than a single point in time.

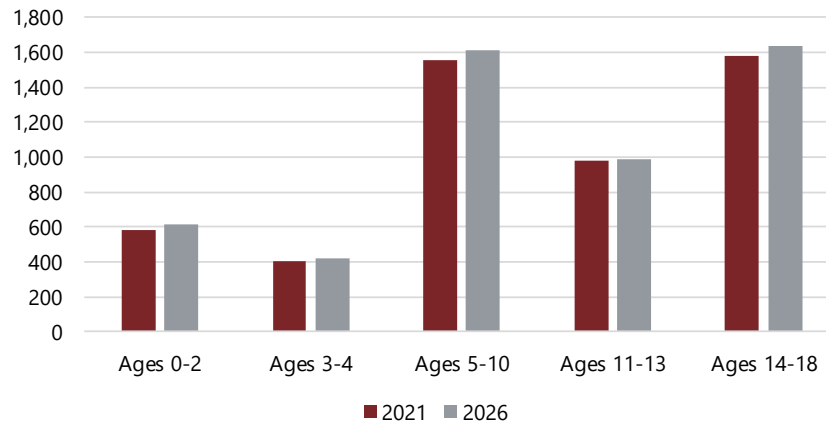
According to the ESRI estimates, the total population of Goochland County is estimated to increase over the next five years. As illustrated in the table below, the number of children, ages 5-18, is estimated to increase by 118 children, or approximately 3 percent.

GOOCHLAND COUNTY POPULATION ESTIMATES

Age	2021	2026	Change	% Change
Ages 0-2	581	611	30	5%
Ages 3-4	403	423	20	5%
Ages 5-10	1,557	1,608	51	3%
Ages 11-13	978	985	7	1%
Ages 14-18	1,577	1,637	60	4%
Ages 5-18	4,112	4,230	118	3%
Total Population	25,874	27,908	2,034	8%

Source: ESRI BIS

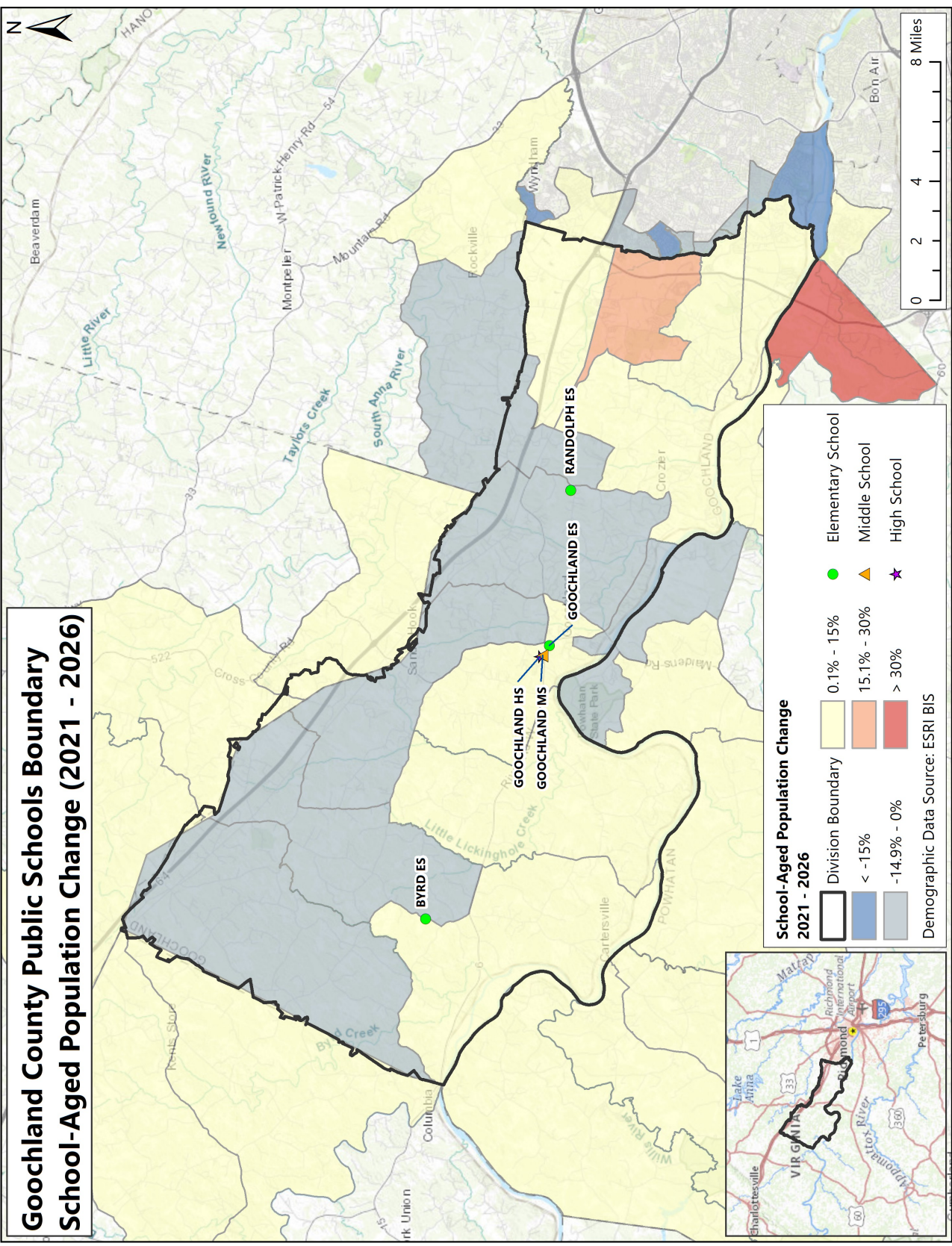
GOOCHLAND COUNTY POPULATION ESTIMATES



GOOCHLAND COUNTY PUBLIC SCHOOLS BOUNDARY ESTIMATED SCHOOL-AGED POPULATION CHANGE 2021-2026

The map on the following page shows school-aged population change in the U.S. Census block groups within / around the Goochland County Public Schools boundary. Population changes are based on 2021 and 2026 estimates.

A block group is defined by the U.S. Census Bureau as, "a statistical Division of a census tract, generally defined to contain between 600 and 3,000 people and 240 and 1,200 housing units, and the smallest geographic unit for which the Census Bureau tabulates sample data."

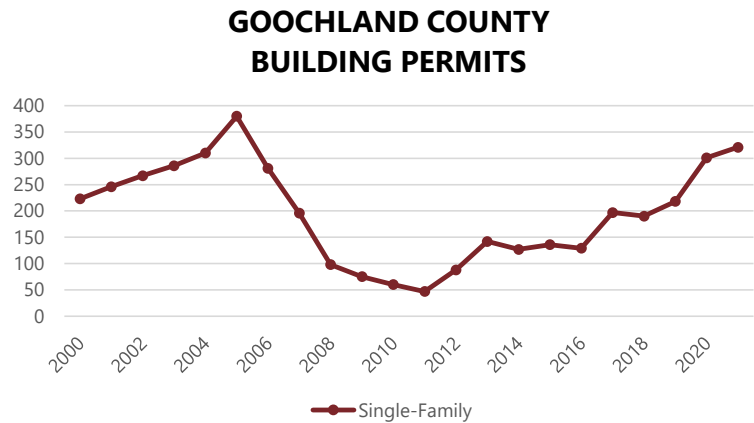


HOUSING DATA

Housing development and building permits are tracked to determine their effect on student enrollment. The table and graph below illustrate the number of single-family building permits issued in Goochland County since 2000.

BUILDING PERMITS GOOCHLAND COUNTY

Year	Single-Family
2000	223
2001	246
2002	267
2003	286
2004	310
2005	380
2006	281
2007	196
2008	98
2009	75
2010	60
2011	47
2012	88
2013	142
2014	127
2015	136
2016	129
2017	197
2018	190
2019	218
2020	301
2021*	321



Source: SOCDs Building Permits Database

*preliminary through November 2021

Subdivision Analysis

Cooperative Strategies performed a Subdivision Analysis for the Goochland County Public Schools to determine the potential growth of planned housing developments and the impact that growth has on the District’s student population.

To determine the student yields by subdivision, students enrolled in the 2021-22 school year were first placed geographically on a map based on their home address (geocoded). The subdivision/complex in which they reside was then determined, and a student yield ratio was found by dividing the number of students within the subdivision/complex by the number of housing units within the subdivision/complex. In order to determine the number of students that a new development may generate, an average of the student yields by housing type was calculated for each elementary boundary, and applied to the number of units expected to develop within each elementary boundary.

The methodology used in this analysis varies greatly from the methodology used in the enrollment projections. It is also important to note that the student potential values shown in the Subdivision Analysis will inherently include students that are moving *within* the Division; not all students produced by these developments will necessarily be new to the Division, or even a specific attendance boundary.

The table below details the average single-family and multi-family yields, of known subdivisions, by elementary attendance boundary.

Attendance Boundary	Average Single-Family Yields				Average Multi-Family Yields			
	K-5 Yield	6-8 Yield	9-12 Yield	K-12 Yield	K-5 Yield	6-8 Yield	9-12 Yield	K-12 Yield
Byrd Elementary Zone	0.17	0.09	0.12	0.38	-	-	-	-
Goochland Elementary Zone	0.17	0.10	0.19	0.47	-	-	-	-
Randolph Elementary Zone	0.09	0.05	0.08	0.22	0.02	0.01	0.00	0.01
Division Total	0.17	0.09	0.12	0.38	0.02	0.01	0.00	0.01

The table below shows the number of housing units, in known subdivisions, by housing type and elementary attendance boundary.

Attendance Boundary	Units by Housing Type and Boundary		
	Single-Family	Multi-Family	Total
Byrd Elementary Zone	567	-	567
Goochland Elementary Zone	859	-	859
Randolph Elementary Zone	2,586	712	3,298
Division Total	4,012	712	4,724

The following tables show single-family student yields, by the average assessed value of subdivisions, by elementary attendance boundary.

Yields by Average Subdivision Market Value in Byrd Attendance Zone					
Market Value	Units	K-12 Yield	K-5 Yield	6-8 Yield	9-12 Yield
< 200K	116	0.46	0.24	0.09	0.13
200K - 300K	180	0.37	0.17	0.10	0.09
300K - 400K	164	0.32	0.10	0.09	0.13
400K - 500K	100	0.37	0.17	0.05	0.15
>500K	7	1.00	0.43	0.43	0.14
Byrd Total	567	0.38	0.17	0.09	0.12

Yields by Average Subdivision Market Value in Goochland Attendance Zone					
Market Value	Units	K-12 Yield	K-5 Yield	6-8 Yield	9-12 Yield
< 200K	58	0.34	0.16	0.09	0.10
200K - 300K	148	0.36	0.11	0.09	0.16
300K - 400K	339	0.45	0.19	0.07	0.18
400K - 500K	277	0.58	0.19	0.15	0.23
500K - 600K	34	0.32	0.03	0.12	0.18
>600K	3	1.33	0.00	0.33	1.00
Goochland Total	859	0.47	0.17	0.10	0.19

Yields by Average Subdivision Market Value in Randolph Attendance Zone					
Market Value	Units	K-12 Yield	K-5 Yield	6-8 Yield	9-12 Yield
< 200K	0				
200K - 300K	324	0.27	0.10	0.08	0.09
300K - 400K	360	0.30	0.15	0.06	0.09
400K - 500K	420	0.28	0.10	0.07	0.11
500K - 600K	288	0.39	0.17	0.09	0.14
600K - 700K	112	0.13	0.06	0.03	0.04
700K - 800K	246	0.17	0.07	0.05	0.06
800K - 900K	342	0.12	0.04	0.03	0.04
900K - 1M	290	0.06	0.02	0.02	0.02
>1M	204	0.08	0.02	0.02	0.04
Randolph Total	2586	0.22	0.09	0.05	0.08

The table below details the student potential for new lots, by grade level, for all Goochland County Schools. Potentials were calculated by multiplying potential new lots by housing type and attendance boundary, with student yield averages for each attendance boundary.

Student potentials by grade level for vacant lots within current subdivisions are also provided. These potentials were also calculated by multiplying the number of vacant lots within an attendance boundary by student yield averages for that boundary.

Attendance Boundary	New Lots and Student Potential by Attendance Boundary				Vacant Lots in Current Subdivisions and Student Potential by Attendance Boundary				Student Potential Total
	Single-Family	Multi-Family	Total	Student Potential	Single-Family	Multi-Family	Total	Student Potential	
Byrd ES	8	-	8	1	110	-	110	18	20
Goochland ES	372	-	372	75	71	-	71	14.34	89
Randolph ES	537	569	1,106	54	144	-	144	12.64	67
ES Subtotal	917	569	1,486	131	325	0	325	45	176
Goochland MS	917	569	1,486	76	325	-	325	26	102
Goochland HS	917	569	1,486	131	325	-	325	41	171
Division Total	917	569	1,486	337	325	0	325	112	449

The information in the tables below (continued on the following page) illustrates current approved subdivisions in the Division. There are 1,498 single-family, 569 multi-family, and 1,993 age-restricted potential lots approved by Zoning for Goochland County. In the Byrd Elementary boundary there are 15 single-family lots; in the Goochland Elementary boundary there are 499 single-family lots; and in the Randolph Elementary boundary there are 984 single-family lots, 569 multi-family lots, and 1,993 age-restricted lots.

SINGLE-FAMILY SUBDIVISIONS

Subdivision Name	Estimated Construction Start	# of Potential Lots Approved by Zoning	Recorded Lots	Recorded Lots with Permits	Future Lots Not Yet Recorded	Vacant Recorded Lots	School Boundary
Blufton		29	29	0	0	0	Randolph Elementary
Boone Homes	1-3 years	10	0	0	10	0	Randolph Elementary
Breeze Hill	0-3 years	131	81	61	50	20	Randolph Elementary
Bridgewater	0-2 years	40	30	26	10	4	Randolph Elementary
Carver Oaks	0-1 years	9	9	7	0	2	Randolph Elementary
Creekmore Place	0-2 years	18	18	9	0	9	Randolph Elementary
Hunt Club Hill	5+ years	34	0	0	34	0	Randolph Elementary
Kinloch Sections 8	0-2 years	74	74	67	0	7	Randolph Elementary
Kinloch Sections 9	0-3 years	31	31	4	0	27	Randolph Elementary
Kinloch Sections 10	0-2 years	33	33	26	0	7	Randolph Elementary
Lanes End	0-1 years	29	29	23	0	6	Randolph Elementary
Park View	0-1 years	5	5	3	0	2	Randolph Elementary
Readers Branch	0-2 years	303	256	161	47	142	Randolph Elementary
Reva Ridge	0-3 years	6	6	4	0	2	Randolph Elementary
Sabot Creek	0-2 years	22	22	19	0	3	Randolph Elementary
Songbird	1-3 years	65	0	0	65	0	Randolph Elementary
Tuckahoe Bridge	0-4 years	98	49	7	49	42	Randolph Elementary
Tuckahoe Creek	0-4 years	47	47	21	0	26	Randolph Elementary
Randolph Elementary Subtotal:		984	719	438	265	299	
Boundary Run	0-1 years	26	26	21	0	5	Goochland Elementary
Clifton Creek	0-1 years	3	3	2	0	1	Goochland Elementary
Kruger/Harris Rezoning	5+ years	66	0	0	66	0	Goochland Elementary
Preston Park	0-3 years	49	49	21	0	28	Goochland Elementary
Reed Marsh	0-5 years	64	64	8	0	56	Goochland Elementary
Rockets Ridge	0-3 years	46	15	12	31	3	Goochland Elementary
Rose Retreat	5+ years	45	0	0	45	0	Goochland Elementary
Rural Hill	1-8 years	170	0	0	170	0	Goochland Elementary
Swann's Inn	0-3 years	30	30	20	0	10	Goochland Elementary
Goochland Elementary Subtotal:		499	187	84	312	103	
Whitehall Creek	0-3 years	15	15	7	0	8	Byrd Elementary
Byrd Elementary Subtotal:		15	15	7	0	8	
Grand Total		1,498	921	529	577	410	

Source: Goochland County Public Schools

MULTI-FAMILY SUBDIVISIONS

Subdivision Name	Estimated Construction Start	# of Potential Lots Approved by Zoning	Recorded Lots	Recorded Lots with Permits	Future Lots Not Yet Recorded	Vacant Recorded Lots	School Boundary
Manakin Towne	2-3 years	234	0	0	234	0	Randolph Elementary
Oak Hill MF	1-3 years	335	335				Randolph Elementary
Randolph Elementary Subtotal		569	335	0	234	0	
Grand Total		569	335	0	234	0	

Source: Goochland County Public Schools

AGE-RESTRICTED SUBDIVISIONS

Subdivision Name	Estimated Construction Start	# of Potential Lots Approved by Zoning	Recorded Lots	Recorded Lots with Permits	Future Lots Not Yet Recorded	Vacant Recorded Lots	School Boundary
Avery Point	0-8 years	1,250					Randolph Elementary
Mosaic	0-5 years	520	180	120	340	60	Randolph Elementary
Parkside Village Section 4	0-1 years	62	62	61	0	1	Randolph Elementary
Parkside Village Section 5	1-2 years	31	0	0	31	0	Randolph Elementary
Tuckahoe Pines	complete	130	130	130	0	0	Randolph Elementary
Randolph Elementary Subtotal:		1,993	372	311	371	61	
Grand Total		1,993	372	311	371	61	

Source: Goochland County Public Schools

RESIDENT LIVE BIRTH DATA

Utilization of resident live birth data is recommended when projecting future kindergarten enrollments. This data provides a helpful overall trend. Large bubbles in birth counts, either up or down, can also be planned for or anticipated by the Division.

In addition, the live birth counts are used in determining a birth-to-kindergarten and birth-to-first grade survival ratio. This ratio identifies the percentage of children born in a representative area who attend kindergarten and first grade in the Division five and six years later. The survival ratios for birth-to-kindergarten, birth-to-first grade, as well as grades 1-12 can be found on page 31 of this report.

Data is arranged by the residence of the mother. For example, if a mother lives in Goochland County but delivers her baby in Caroline County, the birth is counted in Goochland County. Live birth counts are different from live birth rates. The live birth count is simply the actual number of live births. A birth rate is the number of births per 1,000 women in a specified population group.

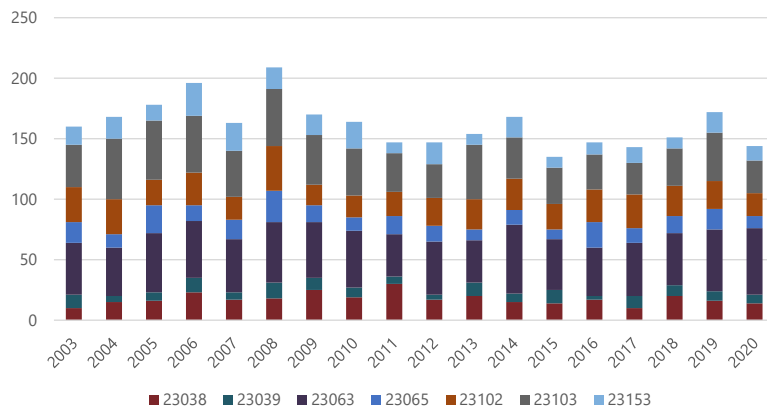
The following graph and table include the resident live birth counts for ZIP codes 23038, 23039, 23059, 23063, 23065, 23084, 23093, 23102, 23103, 23117, 23129, 23146, 23153, 23160, 23233, and 23238. Upon analysis of student data and the map on the following page, only live birth counts for ZIP codes 23038, 23039, 23063, 23065, 23102, 23103, and 23153 were used in the development of the enrollment projections.

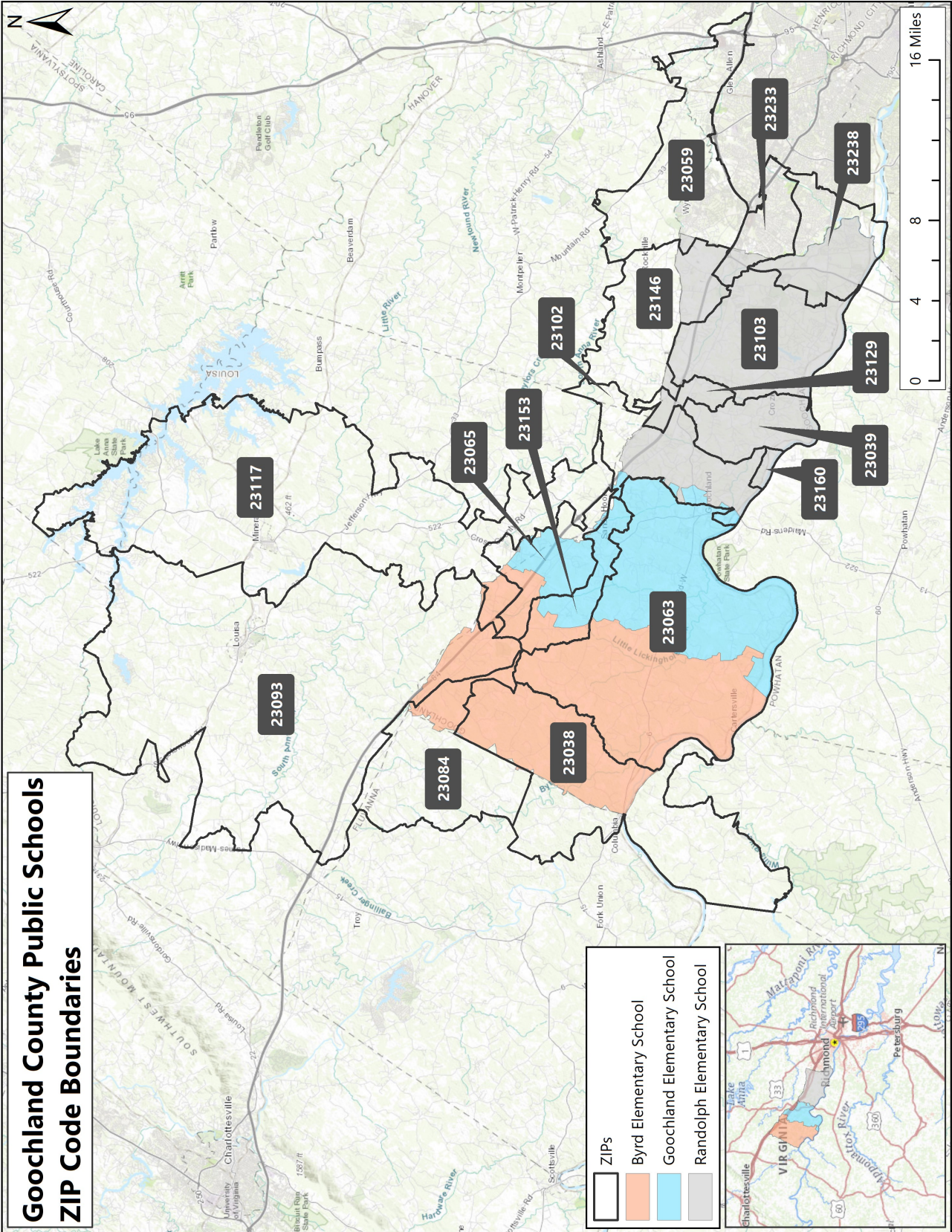
**GOOCHLAND COUNTY PUBLIC SCHOOLS ZIP CODES
RESIDENT LIVE BIRTH COUNTS**

Year	23038	23039	23059	23063	23065	23084	23093	23102	23103	23117	23129	23146	23153	23160	23233	23238
2003	10	11	375	43	17	14	98	29	35	58	3	31	15	0	384	215
2004	15	5	447	40	11	15	113	29	50	92	1	23	18	0	351	251
2005	16	7	434	49	23	14	141	21	49	67	2	36	13	0	369	249
2006	23	12	419	47	13	23	135	27	47	76	4	27	27	0	324	280
2007	17	6	400	44	16	20	148	19	38	105	5	22	23	0	306	246
2008	18	13	394	50	26	16	144	37	47	69	0	20	18	0	310	232
2009	25	10	402	46	14	14	152	17	41	108	5	26	17	0	340	241
2010	19	8	373	47	11	17	143	18	39	83	4	25	22	0	323	207
2011	30	6	338	35	15	19	129	20	32	89	2	23	9	0	329	240
2012	17	4	319	44	13	19	158	23	28	93	2	23	18	0	332	248
2013	20	11	358	35	9	13	138	25	45	74	2	22	9	0	317	208
2014	15	7	355	57	12	22	124	26	34	89	0	19	17	0	325	251
2015	14	11	331	42	8	15	153	21	30	78	1	32	9	0	343	274
2016	17	3	339	40	21	13	143	27	29	92	4	18	10	1	327	241
2017	10	10	322	44	12	21	158	28	26	95	0	26	13	0	337	252
2018	20	9	331	43	14	18	134	25	31	86	0	30	9	0	343	244
2019	16	8	314	51	17	14	137	23	40	97	1	24	17	0	342	256
2020	14	7	360	55	10	20	144	19	27	94	5	19	12	0	333	252

Source: Virginia Department of Health

**GOOCHLAND COUNTY PUBLIC SCHOOLS ZIP CODES
RESIDENT LIVE BIRTH COUNTS**





SURVIVAL RATIOS

The chart below demonstrates the ten-year changes in enrollment as students move through the system. Percentages greater than 100 indicate that there are more students than there were in the previous grade the previous year. In other words, there was an increase in student population where new students were added to the system. Percentages less than 100 indicate that there was decline or students left the system. If the exact number of students in 1st grade during the 2014-15 school year were present in 2nd grade for the 2015-16 school year, the survival ratio would be 100 percent.

Birth-to-Kindergarten and Birth-to-First Grade: This ratio indicates the number of children born in the area who attend kindergarten and first grade in the Division five and six years later. What is important to note is the trend in survival ratios, not necessarily the actual number.

Grades 8 to 9: The higher than usual percentage may be a result of school Division promotion policies. Often in school Divisions, students are promoted from 8th to 9th grade and after one year in 9th grade do not have sufficient credits to be classified as a 10th grader and are counted again as 9th graders the following year. There may also be students who are attending private or charter schools or are home schooled through grade 8 and then attend public schools for high school education.

The following table illustrates the historical survival ratios in the Goochland County Public Schools over the past ten years by grade level.

Survival Ratios - District-wide

from	to	Birth to K	K to 1	Birth to 1	1 to 2	2 to 3	3 to 4	4 to 5	5 to 6	6 to 7	7 to 8	8 to 9	9 to 10	10 to 11	11 to 12
2012-13	2013-14	89.95%	103.77%	101.23%	111.18%	106.67%	107.55%	105.65%	105.49%	98.07%	100.00%	107.65%	88.55%	94.57%	110.30%
2013-14	2014-15	82.94%	103.72%	93.30%	103.64%	102.37%	102.84%	98.83%	104.28%	104.17%	99.51%	106.11%	92.89%	99.00%	107.47%
2014-15	2015-16	112.20%	113.48%	94.12%	104.10%	108.19%	108.09%	108.29%	105.92%	100.00%	100.50%	115.35%	98.43%	93.88%	108.54%
2015-16	2016-17	102.04%	101.63%	114.02%	101.88%	107.88%	103.24%	101.07%	103.57%	101.68%	106.15%	107.96%	97.42%	98.40%	107.07%
2016-17	2017-18	128.57%	105.33%	107.48%	98.40%	106.13%	95.89%	104.71%	108.99%	101.97%	106.04%	101.93%	100.92%	95.59%	108.11%
2017-18	2018-19	112.34%	101.59%	130.61%	106.96%	99.46%	101.73%	98.57%	101.50%	104.85%	102.42%	111.40%	100.95%	92.69%	102.76%
2018-19	2019-20	97.02%	98.84%	111.04%	96.35%	104.14%	102.73%	100.00%	106.76%	99.51%	100.46%	104.25%	96.74%	93.90%	100.00%
2019-20	2020-21	105.19%	104.29%	101.19%	94.74%	104.32%	101.14%	100.00%	102.84%	106.33%	97.52%	103.69%	95.93%	99.52%	106.00%
2020-21	2021-22	101.36%	107.75%	113.33%	101.18%	106.79%	105.18%	100.00%	99.47%	104.42%	99.15%	112.18%	96.89%	97.64%	105.31%
mean simple all years		103.51%	104.49%	107.37%	102.05%	105.11%	103.16%	101.90%	104.31%	102.33%	101.31%	107.84%	96.52%	96.13%	106.17%
std. dev. simple all years		13.42%	4.21%	11.64%	5.18%	2.84%	3.66%	3.44%	2.87%	2.79%	3.01%	4.42%	3.88%	2.54%	3.15%
mean simple 5 years		108.90%	103.56%	112.73%	99.53%	104.17%	101.33%	100.66%	103.91%	103.42%	101.12%	106.69%	98.29%	95.87%	104.44%
std. dev. simple 5 years		12.35%	3.44%	11.00%	4.80%	2.87%	3.41%	2.35%	3.89%	2.69%	3.29%	4.74%	2.45%	2.76%	3.13%
mean simple 3 years		101.19%	103.63%	108.52%	97.42%	105.09%	103.02%	100.00%	103.02%	103.42%	99.05%	106.70%	96.52%	97.02%	103.77%
std. dev. simple 3 years		4.08%	4.49%	6.45%	3.35%	1.48%	2.04%	0.00%	3.65%	3.52%	1.47%	4.75%	0.52%	2.86%	3.28%
mean simple 2 years		103.27%	106.02%	107.26%	97.96%	105.56%	103.16%	100.00%	101.15%	105.38%	98.34%	107.93%	96.41%	98.58%	105.66%
std. dev. simple 2 years		2.70%	2.44%	8.59%	4.55%	1.74%	2.86%	0.00%	2.38%	1.35%	1.15%	6.01%	0.68%	1.33%	0.49%
mean weighted all years		104.46%	104.53%	110.39%	99.77%	105.01%	102.86%	100.59%	102.87%	103.57%	100.25%	107.94%	97.22%	96.71%	104.92%
std. dev. weighted all years		9.30%	3.74%	9.68%	4.37%	2.50%	2.88%	2.23%	3.26%	2.58%	2.75%	4.47%	2.28%	2.52%	2.71%
mean weighted 5 years		103.17%	105.37%	110.78%	99.21%	105.40%	103.41%	100.05%	101.58%	104.27%	99.27%	108.73%	96.97%	97.33%	104.78%
std. dev. weighted 5 years		6.08%	3.41%	7.89%	3.81%	2.11%	2.44%	0.94%	3.07%	2.24%	1.86%	4.61%	1.42%	2.24%	2.19%
mean weighted 3 years		101.86%	106.79%	111.11%	99.86%	106.25%	104.38%	100.00%	100.35%	104.56%	98.92%	110.38%	96.71%	97.82%	105.23%
std. dev. weighted 3 years		2.14%	2.54%	5.63%	3.11%	1.26%	1.92%	0.00%	2.23%	1.53%	0.85%	4.22%	0.45%	1.31%	1.33%
mean weighted 2 years		101.54%	107.58%	112.76%	100.87%	106.67%	104.99%	100.00%	99.63%	104.51%	99.07%	111.78%	96.84%	97.73%	105.35%
std. dev. weighted 2 years		1.15%	1.04%	3.66%	1.94%	0.74%	1.22%	0.00%	1.02%	0.58%	0.49%	2.56%	0.29%	0.57%	0.21%

GOOCHLAND COUNTY PUBLIC SCHOOLS HISTORICAL ENROLLMENT

As indicated in the table below, over the past ten years, student enrollment in the Goochland County Public Schools has increased by 252 students. Since the 2018-19 school year, enrollment has decreased by 81 students.

Historical Enrollment - District-wide

Grade	2012-13	2013-14	2014-15	2015-16	2016-17	2017-18	2018-19	2019-20	2020-21	2021-22
PK	21	19	18	45	80	88	91	88	79	94
K	159	188	141	184	150	189	173	163	142	149
1	152	165	195	160	187	158	192	171	170	153
2	165	169	171	203	163	184	169	185	162	172
3	159	176	173	185	219	173	183	176	193	173
4	177	171	181	187	191	210	176	188	178	203
5	182	187	169	196	189	200	207	176	188	178
6	207	192	195	179	203	206	203	221	181	187
7	180	203	200	195	182	207	216	202	235	189
8	196	180	202	201	207	193	212	217	197	233
9	227	211	191	233	217	211	215	221	225	221
10	184	201	196	188	227	219	213	208	212	218
11	165	174	199	184	185	217	203	200	207	207
12	169	182	187	216	197	200	223	203	212	218
K - 12 Total	2,322	2,399	2,400	2,511	2,517	2,567	2,585	2,531	2,502	2,501
Grand Total	2,343	2,418	2,418	2,556	2,597	2,655	2,676	2,619	2,581	2,595

Source: Goochland County Public Schools

Historical Enrollment - District-wide

Grade	2012-13	2013-14	2014-15	2015-16	2016-17	2017-18	2018-19	2019-20	2020-21	2021-22
PK	21	19	18	45	80	88	91	88	79	94
K - 5	994	1,056	1,030	1,115	1,099	1,114	1,100	1,059	1,033	1,028
6 - 8	583	575	597	575	592	606	631	640	613	609
9 - 12	745	768	773	821	826	847	854	832	856	864
K - 12 Total	2,322	2,399	2,400	2,511	2,517	2,567	2,585	2,531	2,502	2,501
Grand Total	2,343	2,418	2,418	2,556	2,597	2,655	2,676	2,619	2,581	2,595

Source: Goochland County Public Schools

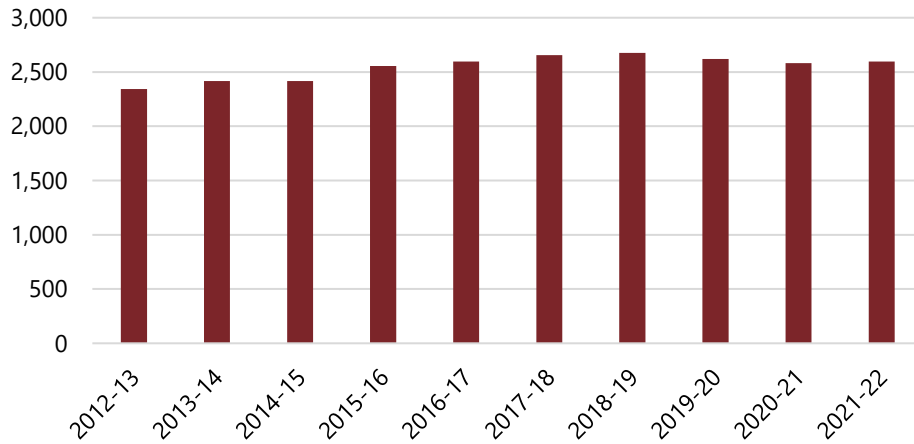
The varying shades of color in the table represent statistically significant cohort sizes. The darker blue represents smaller cohorts, while the darker red represents larger cohorts, comparatively.

Historical Enrollment - by School

School	2012-13	2013-14	2014-15	2015-16	2016-17	2017-18	2018-19	2019-20	2020-21	2021-22	Trend
Byrd Elementary	282	298	285	323	333	362	344	312	290	300	
Goochland Elementary	339	339	331	347	366	353	360	356	349	361	
Goochland High	745	768	773	821	826	847	854	832	856	864	
Goochland Middle	583	575	597	575	592	606	631	640	613	609	
Randolph Elementary	394	438	432	490	480	487	487	479	473	461	
Total	2,343	2,418	2,418	2,556	2,597	2,655	2,676	2,619	2,581	2,595	

Source: Goochland County Public Schools

**HISTORICAL ENROLLMENT -
DISTRICT-WIDE**



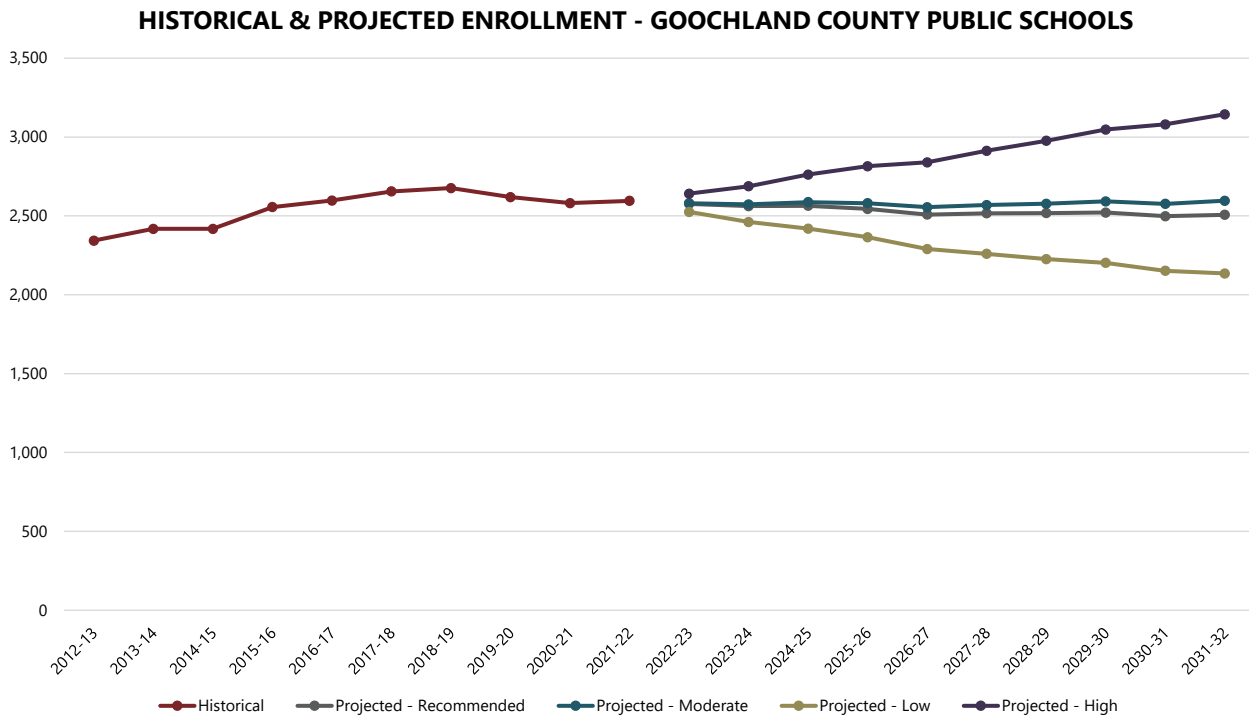
PROJECTED ENROLLMENT

Cooperative Strategies developed low, moderate, high, and recommended enrollment projections for the Goochland County Public Schools. The moderate enrollment projections are based on a selected average or weighted average of survival ratios (in this case, a 5-year simple average, by school). The low and high enrollment projections are developed using statistical distributional theory, providing the Division with a more conservative (low) and more liberal (high) enrollment projection. The recommended enrollment projection is based on a detailed analysis of historical enrollment and resulting survival ratios over the past 10 years, by school. Significant shifts in survival ratio patterns are realized and accounted for in determining projection ratios independently for each grade level. The recommended illustrates the most likely direction of the Division based on more recent trends.

The range of enrollment projections from low (conservative) to high (liberal) are offered due to the limitations of the cohort survival method in factoring changes to policies, program offerings, and future changes in housing and migration patterns. For example, the low enrollment projection might be used if housing declines significantly more than anticipated; the high enrollment projection might be used if housing growth increases at a more rapid rate than seen in recent years.

It should be noted that the actual live birth counts are available through 2020 and project kindergarten enrollment through 2025-26. To project kindergarten through 2031-32, a simple average of the last 3 years of live birth counts was used.

Projected PK enrollment does not follow the cohort survival method but is based on the current 2021-22 enrollment of 94 PK students.



GOOCHLAND COUNTY PUBLIC SCHOOLS PROJECTED ENROLLMENT—RECOMMENDED

Based on the recommended projected enrollment, student enrollment in the Goochland County Public Schools is projected to decrease from 2,595 in the 2021-22 school year to 2,507 students in the 2031-32 school year.

Projected Enrollment - Recommended - District-wide

Grade	2022-23	2023-24	2024-25	2025-26	2026-27	2027-28	2028-29	2029-30	2030-31	2031-32
PK	94	94	94	94	94	94	94	94	94	94
K	155	161	184	160	168	168	168	168	168	168
1	154	162	168	190	166	174	174	174	174	174
2	152	153	159	166	188	164	172	172	172	172
3	179	157	159	165	171	196	171	180	180	180
4	177	183	161	162	169	175	201	173	183	183
5	205	178	184	162	164	171	177	202	175	185
6	183	211	183	189	167	168	176	181	207	180
7	195	191	220	191	197	174	175	183	189	216
8	189	195	191	220	192	198	175	175	184	190
9	249	202	209	204	235	204	211	186	187	196
10	214	241	196	202	198	228	198	205	181	182
11	213	210	236	192	198	194	223	194	200	177
12	217	224	220	247	201	208	203	234	204	210
K - 12 Total	2,482	2,468	2,470	2,450	2,414	2,422	2,424	2,427	2,404	2,413
Grand Total	2,576	2,562	2,564	2,544	2,508	2,516	2,518	2,521	2,498	2,507

Source: Cooperative Strategies

Projected Enrollment - Recommended - District-wide

Grade	2022-23	2023-24	2024-25	2025-26	2026-27	2027-28	2028-29	2029-30	2030-31	2031-32
PK	94	94	94	94	94	94	94	94	94	94
K - 5	1,022	994	1,015	1,005	1,026	1,048	1,063	1,069	1,052	1,062
6 - 8	567	597	594	600	556	540	526	539	580	586
9 - 12	893	877	861	845	832	834	835	819	772	765
K - 12 Total	2,482	2,468	2,470	2,450	2,414	2,422	2,424	2,427	2,404	2,413
Grand Total	2,576	2,562	2,564	2,544	2,508	2,516	2,518	2,521	2,498	2,507

Source: Cooperative Strategies

Projected Enrollment - Recommended - Difference by Grade Configuration (January 2022 Report - July 2020 Report)

Grade	2022-23	2023-24	2024-25	2025-26	2026-27	2027-28	2028-29	2029-30
PK	-7	-7	-7	-7	-7	-7	-7	-7
K - 5	25	25	64	67	78	100	113	122
6 - 8	-11	0	2	13	11	17	15	16
9 - 12	30	34	34	29	33	27	45	56
K - 12 Total	44	59	100	109	122	144	173	194
Grand Total	37	52	93	102	115	137	166	187

The table illustrating the difference by grade configuration shows the differences in the projections presented in this report compared to the previous enrollment projections provided to the Division in July of 2020.

The varying shades of color in the table represent statistically significant cohort sizes. The darker blue represents smaller cohorts, while the darker red represents larger cohorts, comparatively.

Projected Enrollment - Recommended - by School

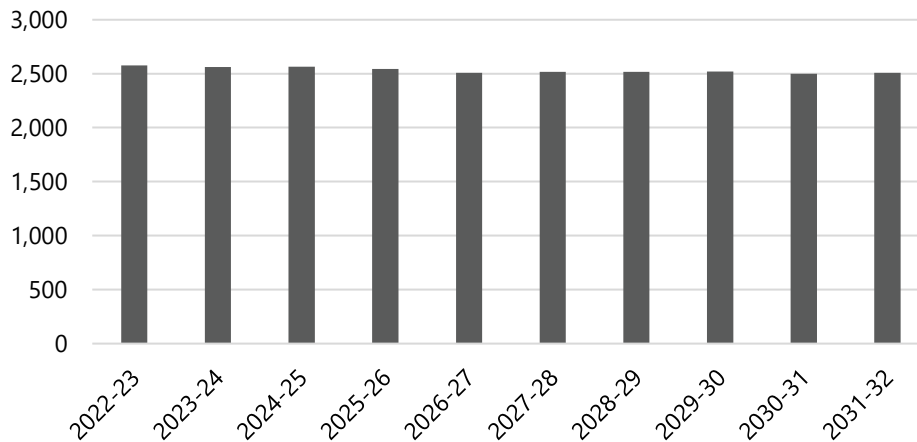
School	2022-23	2023-24	2024-25	2025-26	2026-27	2027-28	2028-29	2029-30	2030-31	2031-32	Trend
Byrd Elementary	292	284	296	299	313	320	330	332	331	329	
Goochland Elementary	354	339	347	355	365	374	379	387	380	380	
Goochland High	893	877	861	845	832	834	835	819	772	765	
Goochland Middle	567	597	594	600	556	540	526	539	580	586	
Randolph Elementary	470	465	466	445	442	448	448	444	435	447	
Total	2,576	2,562	2,564	2,544	2,508	2,516	2,518	2,521	2,498	2,507	

Source: Cooperative Strategies

Projected Enrollment - Recommended - Difference by School (January 2022 Report - July 2020 Report)

School	2022-23	2023-24	2024-25	2025-26	2026-27	2027-28	2028-29	2029-30
Byrd Elementary	11	13	18	31	45	53	61	64
Goochland Elementary	-26	-37	-18	-13	-12	-1	3	13
Goochland High	30	34	34	29	33	27	45	56
Goochland Middle	-11	0	2	13	11	17	15	16
Randolph Elementary	33	42	57	42	38	41	42	38
Total	37	52	93	102	115	137	166	187

**PROJECTED ENROLLMENT - RECOMMENDED -
DISTRICT-WIDE**



The table illustrating the difference by grade configuration shows the differences in the projections presented in this report compared to the previous enrollment projections provided to the Division in July of 2020.

GOOCHLAND COUNTY PUBLIC SCHOOLS PROJECTED ENROLLMENT—MODERATE

Based on the moderate projected enrollment, student enrollment in the Goochland County Public Schools is projected to increase from 2,595 in the 2021-22 school year to 2,596 students in the 2031-32 school year.

Projected Enrollment - Moderate - District-wide

Grade	2022-23	2023-24	2024-25	2025-26	2026-27	2027-28	2028-29	2029-30	2030-31	2031-32
PK	94	94	94	94	94	94	94	94	94	94
K	160	166	190	165	173	173	173	173	173	173
1	154	167	173	197	172	181	181	181	181	181
2	153	155	167	173	197	172	180	180	180	180
3	180	159	161	174	180	206	180	189	189	189
4	175	183	163	163	178	182	208	181	190	190
5	204	176	183	164	164	179	183	209	183	193
6	185	212	183	190	170	171	185	191	218	190
7	193	191	220	190	197	175	177	192	197	226
8	191	196	193	222	192	199	177	179	194	199
9	249	204	209	206	237	205	212	189	190	207
10	217	244	200	205	203	233	201	208	186	187
11	209	208	234	192	197	194	223	193	200	178
12	216	218	217	245	201	205	203	233	201	209
K - 12 Total	2,486	2,479	2,493	2,486	2,461	2,475	2,483	2,498	2,482	2,502
Grand Total	2,580	2,573	2,587	2,580	2,555	2,569	2,577	2,592	2,576	2,596

Source: Cooperative Strategies

Projected Enrollment - Moderate - District-wide

Grade	2022-23	2023-24	2024-25	2025-26	2026-27	2027-28	2028-29	2029-30	2030-31	2031-32
PK	94	94	94	94	94	94	94	94	94	94
K - 5	1,026	1,006	1,037	1,036	1,064	1,093	1,105	1,113	1,096	1,106
6 - 8	569	599	596	602	559	545	539	562	609	615
9 - 12	891	874	860	848	838	837	839	823	777	781
K - 12 Total	2,486	2,479	2,493	2,486	2,461	2,475	2,483	2,498	2,482	2,502
Grand Total	2,580	2,573	2,587	2,580	2,555	2,569	2,577	2,592	2,576	2,596

Source: Cooperative Strategies

Projected Enrollment - Moderate - Difference by Grade Configuration (January 2022 Report - July 2020 Report)

Grade	2022-23	2023-24	2024-25	2025-26	2026-27	2027-28	2028-29	2029-30
PK	-7	-7	-7	-7	-7	-7	-7	-7
K - 5	55	78	140	156	172	203	214	224
6 - 8	-10	-2	-2	16	27	48	57	70
9 - 12	31	35	37	35	37	26	51	74
K - 12 Total	76	111	175	207	236	277	322	368
Grand Total	69	104	168	200	229	270	315	361

The table illustrating the difference by grade configuration shows the differences in the projections presented in this report compared to the previous enrollment projections provided to the Division in July of 2020.

The varying shades of color in the table represent statistically significant cohort sizes. The darker blue represents smaller cohorts, while the darker red represents larger cohorts, comparatively.

Projected Enrollment - Moderate - by School

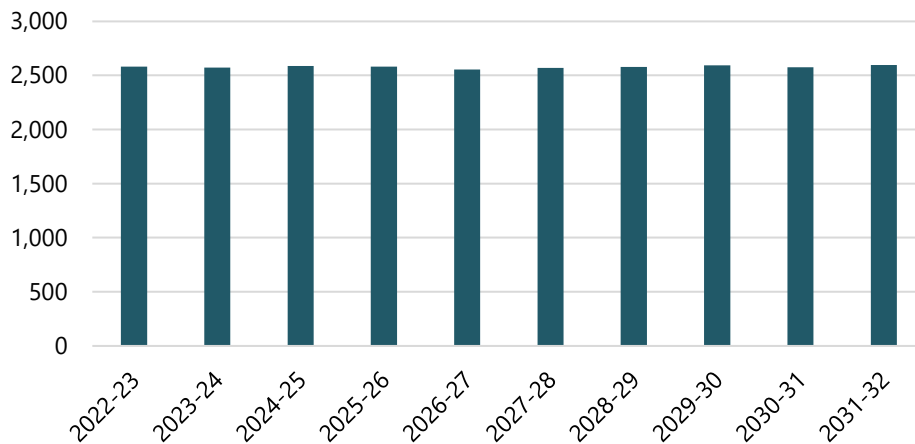
School	2022-23	2023-24	2024-25	2025-26	2026-27	2027-28	2028-29	2029-30	2030-31	2031-32	Trend
Byrd Elementary	291	284	296	299	313	319	328	331	331	329	
Goochland Elementary	359	348	360	373	386	400	406	414	407	406	
Goochland High	891	874	860	848	838	837	839	823	777	781	
Goochland Middle	569	599	596	602	559	545	539	562	609	615	
Randolph Elementary	470	468	475	458	459	468	465	462	452	465	
Total	2,580	2,573	2,587	2,580	2,555	2,569	2,577	2,592	2,576	2,596	

Source: Cooperative Strategies

Projected Enrollment - Moderate - Difference by School (January 2022 Report - July 2020 Report)

School	2022-23	2023-24	2024-25	2025-26	2026-27	2027-28	2028-29	2029-30
Byrd Elementary	36	47	57	68	82	88	96	100
Goochland Elementary	-19	-20	11	26	30	48	54	62
Goochland High	31	35	37	35	37	26	51	74
Goochland Middle	-10	-2	-2	16	27	48	57	70
Randolph Elementary	31	44	65	55	53	60	57	55
Total	69	104	168	200	229	270	315	361

PROJECTED ENROLLMENT - MODERATE - DISTRICT-WIDE



The table illustrating the difference by grade configuration shows the differences in the projections presented in this report compared to the previous enrollment projections provided to the Division in July of 2020.

GOOCHLAND COUNTY PUBLIC SCHOOLS PROJECTED ENROLLMENT—LOW

Based on the low projected enrollment, student enrollment in the Goochland County Public Schools is projected to decrease from 2,595 in the 2021-22 school year to 2,135 students in the 2031-32 school year.

Projected Enrollment - Low- District-wide

Grade	2022-23	2023-24	2024-25	2025-26	2026-27	2027-28	2028-29	2029-30	2030-31	2031-32
PK	94	94	94	94	94	94	94	94	94	94
K	145	150	171	150	157	157	157	157	157	157
1	150	147	152	172	150	158	158	158	158	158
2	148	145	142	146	168	144	153	153	153	153
3	176	151	148	146	150	171	147	157	157	157
4	172	174	150	146	144	148	170	146	155	155
5	201	169	171	149	144	142	146	167	145	153
6	182	205	173	176	152	148	146	150	171	148
7	191	186	210	177	179	155	151	149	153	175
8	188	190	185	209	176	179	154	151	148	152
9	244	197	199	194	218	184	187	161	157	155
10	215	237	191	194	188	212	179	182	157	153
11	206	203	224	181	183	178	201	170	172	148
12	213	213	209	231	187	189	183	207	175	177
K - 12 Total	2,431	2,367	2,325	2,271	2,196	2,165	2,132	2,108	2,058	2,041
Grand Total	2,525	2,461	2,419	2,365	2,290	2,259	2,226	2,202	2,152	2,135

Source: Cooperative Strategies

Projected Enrollment - Low- District-wide

Grade	2022-23	2023-24	2024-25	2025-26	2026-27	2027-28	2028-29	2029-30	2030-31	2031-32
PK	94	94	94	94	94	94	94	94	94	94
K - 5	992	936	934	909	913	920	931	938	925	933
6 - 8	561	581	568	562	507	482	451	450	472	475
9 - 12	878	850	823	800	776	763	750	720	661	633
K - 12 Total	2,431	2,367	2,325	2,271	2,196	2,165	2,132	2,108	2,058	2,041
Grand Total	2,525	2,461	2,419	2,365	2,290	2,259	2,226	2,202	2,152	2,135

Source: Cooperative Strategies

Projected Enrollment - Low - Difference by Grade Configuration (January 2022 Report - July 2020 Report)

Grade	2022-23	2023-24	2024-25	2025-26	2026-27	2027-28	2028-29	2029-30
PK	-7	-7	-7	-7	-7	-7	-7	-7
K - 5	92	95	141	145	142	148	159	167
6 - 8	-1	5	4	19	34	60	55	46
9 - 12	42	45	38	34	30	18	40	67
K - 12 Total	133	145	183	198	206	226	254	280
Grand Total	126	138	176	191	199	219	247	273

The table illustrating the difference by grade configuration shows the differences in the projections presented in this report compared to the previous enrollment projections provided to the Division in July of 2020.

The varying shades of color in the table represent statistically significant cohort sizes. The darker blue represents smaller cohorts, while the darker red represents larger cohorts, comparatively.

Projected Enrollment - Low - by School

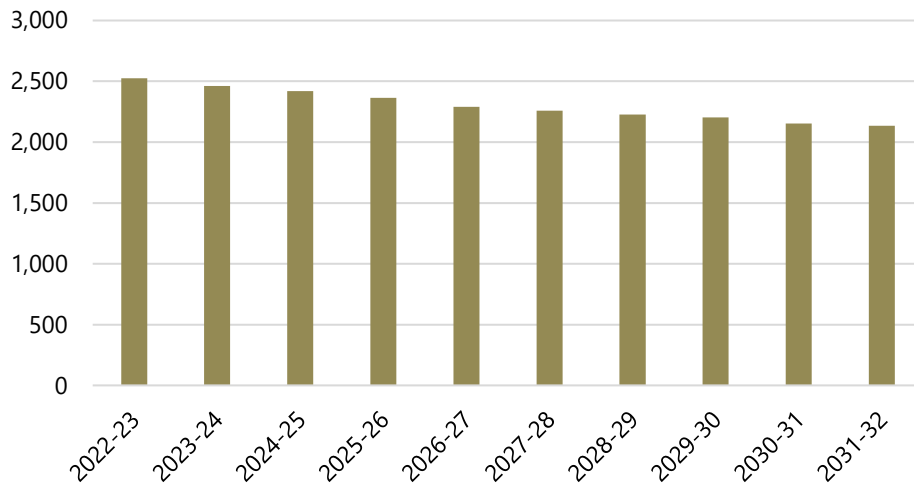
School	2022-23	2023-24	2024-25	2025-26	2026-27	2027-28	2028-29	2029-30	2030-31	2031-32	Trend
Byrd Elementary	278	260	259	256	262	262	268	270	270	269	
Goochland Elementary	347	323	325	326	330	334	339	347	341	340	
Goochland High	878	850	823	800	776	763	750	720	661	633	
Goochland Middle	561	581	568	562	507	482	451	450	472	475	
Randolph Elementary	461	447	444	421	415	418	418	415	408	418	
Total	2,525	2,461	2,419	2,365	2,290	2,259	2,226	2,202	2,152	2,135	

Source: Cooperative Strategies

Projected Enrollment - Low - Difference by School (January 2022 Report - July 2020 Report)

School	2022-23	2023-24	2024-25	2025-26	2026-27	2027-28	2028-29	2029-30
Byrd Elementary	41	43	43	49	55	56	60	63
Goochland Elementary	4	0	31	44	42	47	52	60
Goochland High	42	45	38	34	30	18	40	67
Goochland Middle	-1	5	4	19	34	60	55	46
Randolph Elementary	40	45	60	45	38	38	40	37
Total	126	138	176	191	199	219	247	273

PROJECTED ENROLLMENT - LOW- DISTRICT-WIDE



The table illustrating the difference by grade configuration shows the differences in the projections presented in this report compared to the previous enrollment projections provided to the Division in July of 2020.

GOOCHLAND COUNTY PUBLIC SCHOOLS PROJECTED ENROLLMENT—HIGH

Based on the high projected enrollment, student enrollment in the Goochland County Public Schools is projected to increase from 2,595 in the 2021-22 school year to 3,144 students in the 2031-32 school year.

Projected Enrollment - High - District-wide

Grade	2022-23	2023-24	2024-25	2025-26	2026-27	2027-28	2028-29	2029-30	2030-31	2031-32
PK	94	94	94	94	94	94	94	94	94	94
K	176	182	208	182	191	191	191	191	191	191
1	159	188	195	223	194	205	205	205	205	205
2	158	164	195	201	230	201	211	211	211	211
3	184	169	176	208	215	246	215	226	226	226
4	179	190	175	182	215	222	253	222	233	233
5	208	183	194	180	186	220	228	261	228	239
6	188	220	194	206	189	197	233	240	276	241
7	196	197	230	203	215	198	206	244	252	288
8	194	201	202	236	208	221	203	211	250	258
9	254	211	218	220	257	227	240	221	230	272
10	220	252	210	217	218	256	225	239	220	228
11	212	213	245	204	211	212	248	219	232	213
12	219	224	226	259	216	223	224	263	232	245
K - 12 Total	2,547	2,594	2,668	2,721	2,745	2,819	2,882	2,953	2,986	3,050
Grand Total	2,641	2,688	2,762	2,815	2,839	2,913	2,976	3,047	3,080	3,144

Source: Cooperative Strategies

Projected Enrollment - High - District-wide

Grade	2022-23	2023-24	2024-25	2025-26	2026-27	2027-28	2028-29	2029-30	2030-31	2031-32
PK	94	94	94	94	94	94	94	94	94	94
K - 5	1,064	1,076	1,143	1,176	1,231	1,285	1,303	1,316	1,294	1,305
6 - 8	578	618	626	645	612	616	642	695	778	787
9 - 12	905	900	899	900	902	918	937	942	914	958
K - 12 Total	2,547	2,594	2,668	2,721	2,745	2,819	2,882	2,953	2,986	3,050
Grand Total	2,641	2,688	2,762	2,815	2,839	2,913	2,976	3,047	3,080	3,144

Source: Cooperative Strategies

Projected Enrollment - High - Difference by Grade Configuration (January 2022 Report - July 2020 Report)

Grade	2022-23	2023-24	2024-25	2025-26	2026-27	2027-28	2028-29	2029-30
PK	-7	-7	-7	-7	-7	-7	-7	-7
K - 5	24	56	137	171	213	266	286	299
6 - 8	-20	-10	-9	12	14	35	62	103
9 - 12	20	28	33	37	42	35	63	84
K - 12 Total	24	74	161	220	269	336	411	486
Grand Total	17	67	154	213	262	329	404	479

The table illustrating the difference by grade configuration shows the differences in the projections presented in this report compared to the previous enrollment projections provided to the Division in July of 2020.

The varying shades of color in the table represent statistically significant cohort sizes. The darker blue represents smaller cohorts, while the darker red represents larger cohorts, comparatively.

Projected Enrollment - High - by School

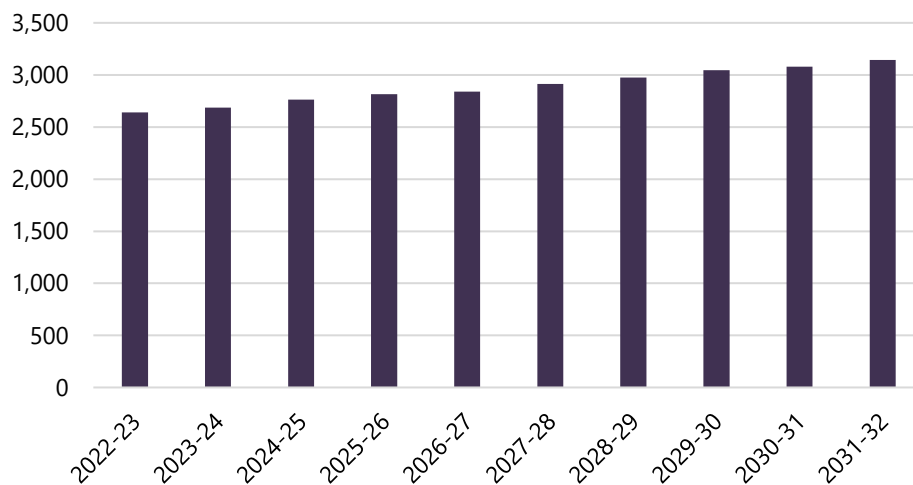
School	2022-23	2023-24	2024-25	2025-26	2026-27	2027-28	2028-29	2029-30	2030-31	2031-32	Trend
Byrd Elementary	303	309	332	349	374	387	399	403	403	400	
Goochland Elementary	372	371	398	422	446	472	479	491	481	480	
Goochland High	905	900	899	900	902	918	937	942	914	958	
Goochland Middle	578	618	626	645	612	616	642	695	778	787	
Randolph Elementary	483	490	507	499	505	520	519	516	504	519	
Total	2,641	2,688	2,762	2,815	2,839	2,913	2,976	3,047	3,080	3,144	

Source: Cooperative Strategies

Projected Enrollment - High - Difference by School (January 2022 Report - July 2020 Report)

School	2022-23	2023-24	2024-25	2025-26	2026-27	2027-28	2028-29	2029-30
Byrd Elementary	30	49	67	91	115	129	140	145
Goochland Elementary	-39	-43	-9	8	20	49	56	68
Goochland High	20	28	33	37	42	35	63	84
Goochland Middle	-20	-10	-9	12	14	35	62	103
Randolph Elementary	26	43	72	65	71	81	83	79
Total	17	67	154	213	262	329	404	479

PROJECTED ENROLLMENT - HIGH - DISTRICT-WIDE



The table illustrating the difference by grade configuration shows the differences in the projections presented in this report compared to the previous enrollment projections provided to the Division in July of 2020.

ENROLLMENT BY SCHOOL

The following pages illustrate historical and projected enrollment by school of attendance.

BYRD ELEMENTARY..... 44
GOOCHLAND ELEMENTARY 46
GOOCHLAND HIGH..... 48
GOOCHLAND MIDDLE 49
RANDOLPH ELEMENTARY 50

BYRD ELEMENTARY

Students attending Byrd Elementary feed into Goochland Middle.

Historical Enrollment - Byrd Elementary

Grade	2012-13	2013-14	2014-15	2015-16	2016-17	2017-18	2018-19	2019-20	2020-21	2021-22
PK	0	0	0	17	16	33	35	28	27	34
K	52	51	46	53	50	64	41	53	30	45
1	47	54	51	48	53	47	61	33	49	35
2	41	51	52	53	46	51	52	50	33	44
3	46	47	46	55	58	48	51	50	54	40
4	43	46	45	51	59	55	49	50	50	52
5	53	49	45	46	51	64	55	48	47	50
Grand Total	282	298	285	323	333	362	344	312	290	300

Source: Goochland County Public Schools

Projected Enrollment - Recommended - Byrd Elementary

Grade	2022-23	2023-24	2024-25	2025-26	2026-27	2027-28	2028-29	2029-30	2030-31	2031-32
PK	34	34	34	34	34	34	34	34	34	34
K	42	49	52	53	51	51	51	51	51	51
1	43	40	47	49	51	49	49	49	49	49
2	34	41	38	45	47	49	47	47	47	47
3	47	35	44	40	47	50	52	50	50	50
4	40	46	35	43	40	47	50	51	49	49
5	52	39	46	35	43	40	47	50	51	49
Grand Total	292	284	296	299	313	320	330	332	331	329

Source: Cooperative Strategies

Projected Enrollment - Moderate - Byrd Elementary

Grade	2022-23	2023-24	2024-25	2025-26	2026-27	2027-28	2028-29	2029-30	2030-31	2031-32
PK	34	34	34	34	34	34	34	34	34	34
K	42	49	52	53	51	51	51	51	51	51
1	43	40	47	49	51	49	49	49	49	49
2	34	41	38	45	47	49	47	47	47	47
3	47	35	44	40	47	50	52	50	50	50
4	39	46	35	43	40	46	49	51	49	49
5	52	39	46	35	43	40	46	49	51	49
Grand Total	291	284	296	299	313	319	328	331	331	329

Source: Cooperative Strategies

The varying shades of color in the table represent statistically significant cohort sizes. The darker blue represents smaller cohorts, while the darker red represents larger cohorts, comparatively.

Projected Enrollment - Low - Byrd Elementary

Grade	2022-23	2023-24	2024-25	2025-26	2026-27	2027-28	2028-29	2029-30	2030-31	2031-32
PK	34	34	34	34	34	34	34	34	34	34
K	37	43	46	48	46	46	46	46	46	46
1	40	33	39	41	43	41	41	41	41	41
2	32	37	30	35	38	39	37	37	37	37
3	45	32	37	31	36	38	39	38	38	38
4	39	43	31	36	30	35	37	38	37	37
5	51	38	42	31	35	29	34	36	37	36
Grand Total	278	260	259	256	262	262	268	270	270	269

Source: Cooperative Strategies

Projected Enrollment - High - Byrd Elementary

Grade	2022-23	2023-24	2024-25	2025-26	2026-27	2027-28	2028-29	2029-30	2030-31	2031-32
PK	34	34	34	34	34	34	34	34	34	34
K	46	54	57	59	57	57	57	57	57	57
1	46	47	55	58	60	58	58	58	58	58
2	35	46	47	55	58	60	58	58	58	58
3	49	39	51	52	61	65	66	64	64	64
4	40	48	39	51	52	60	64	66	64	64
5	53	41	49	40	52	53	62	66	68	65
Grand Total	303	309	332	349	374	387	399	403	403	400

Source: Cooperative Strategies

The varying shades of color in the table represent statistically significant cohort sizes. The darker blue represents smaller cohorts, while the darker red represents larger cohorts, comparatively.

GOOCHLAND ELEMENTARY

Students attending Goochland Elementary feed into Goochland Middle.

Historical Enrollment - Goochland Elementary

Grade	2012-13	2013-14	2014-15	2015-16	2016-17	2017-18	2018-19	2019-20	2020-21	2021-22
PK	21	19	18	28	46	37	40	41	32	39
K	49	53	36	46	41	52	56	44	42	43
1	53	45	55	39	54	46	54	62	49	47
2	51	55	50	58	39	54	49	59	54	49
3	46	51	60	54	70	42	55	55	61	56
4	59	55	56	61	53	67	39	55	55	67
5	60	61	56	61	63	55	67	40	56	60
Grand Total	339	339	331	347	366	353	360	356	349	361

Source: Goochland County Public Schools

Projected Enrollment - Recommended - Goochland Elementary

Grade	2022-23	2023-24	2024-25	2025-26	2026-27	2027-28	2028-29	2029-30	2030-31	2031-32
PK	39	39	39	39	39	39	39	39	39	39
K	46	44	57	51	51	51	51	51	51	51
1	47	51	49	63	57	56	56	56	56	56
2	47	48	51	49	63	57	56	56	56	56
3	51	49	50	53	51	66	59	59	59	59
4	56	51	49	50	53	51	66	59	59	59
5	68	57	52	50	51	54	52	67	60	60
Grand Total	354	339	347	355	365	374	379	387	380	380

Source: Cooperative Strategies

Projected Enrollment - Moderate - Goochland Elementary

Grade	2022-23	2023-24	2024-25	2025-26	2026-27	2027-28	2028-29	2029-30	2030-31	2031-32
PK	39	39	39	39	39	39	39	39	39	39
K	49	47	61	55	54	54	54	54	54	54
1	47	54	52	67	61	60	60	60	60	60
2	47	48	55	52	67	61	60	60	60	60
3	52	50	50	58	55	71	65	64	64	64
4	56	52	50	50	58	55	71	64	63	63
5	69	58	53	52	52	60	57	73	67	66
Grand Total	359	348	360	373	386	400	406	414	407	406

Source: Cooperative Strategies

The varying shades of color in the table represent statistically significant cohort sizes. The darker blue represents smaller cohorts, while the darker red represents larger cohorts, comparatively.

Projected Enrollment - Low - Goochland Elementary

Grade	2022-23	2023-24	2024-25	2025-26	2026-27	2027-28	2028-29	2029-30	2030-31	2031-32
PK	39	39	39	39	39	39	39	39	39	39
K	43	41	53	48	47	47	47	47	47	47
1	47	47	45	57	52	51	51	51	51	51
2	45	45	45	43	56	50	50	50	50	50
3	51	47	47	47	45	58	52	52	52	52
4	54	49	46	45	45	43	56	51	50	50
5	68	55	50	47	46	46	44	57	52	51
Grand Total	347	323	325	326	330	334	339	347	341	340

Source: Cooperative Strategies

Projected Enrollment - High - Goochland Elementary

Grade	2022-23	2023-24	2024-25	2025-26	2026-27	2027-28	2028-29	2029-30	2030-31	2031-32
PK	39	39	39	39	39	39	39	39	39	39
K	56	53	69	62	61	61	61	61	61	61
1	48	62	60	77	69	69	69	69	69	69
2	49	50	65	62	80	73	72	72	72	72
3	53	53	54	70	67	86	78	77	77	77
4	57	54	54	55	72	69	88	80	79	79
5	70	60	57	57	58	75	72	93	84	83
Grand Total	372	371	398	422	446	472	479	491	481	480

Source: Cooperative Strategies

The varying shades of color in the table represent statistically significant cohort sizes. The darker blue represents smaller cohorts, while the darker red represents larger cohorts, comparatively.

GOOCHLAND HIGH

Students attending Goochland High feed from Goochland Middle.

Historical Enrollment - Goochland High

Grade	2012-13	2013-14	2014-15	2015-16	2016-17	2017-18	2018-19	2019-20	2020-21	2021-22
9	227	211	191	233	217	211	215	221	225	221
10	184	201	196	188	227	219	213	208	212	218
11	165	174	199	184	185	217	203	200	207	207
12	169	182	187	216	197	200	223	203	212	218
Grand Total	745	768	773	821	826	847	854	832	856	864

Source: Goochland County Public Schools

Projected Enrollment - Recommended - Goochland High

Grade	2022-23	2023-24	2024-25	2025-26	2026-27	2027-28	2028-29	2029-30	2030-31	2031-32
9	249	202	209	204	235	204	211	186	187	196
10	214	241	196	202	198	228	198	205	181	182
11	213	210	236	192	198	194	223	194	200	177
12	217	224	220	247	201	208	203	234	204	210
Grand Total	893	877	861	845	832	834	835	819	772	765

Source: Cooperative Strategies

Projected Enrollment - Moderate - Goochland High

Grade	2022-23	2023-24	2024-25	2025-26	2026-27	2027-28	2028-29	2029-30	2030-31	2031-32
9	249	204	209	206	237	205	212	189	190	207
10	217	244	200	205	203	233	201	208	186	187
11	209	208	234	192	197	194	223	193	200	178
12	216	218	217	245	201	205	203	233	201	209
Grand Total	891	874	860	848	838	837	839	823	777	781

Source: Cooperative Strategies

Projected Enrollment - Low - Goochland High

Grade	2022-23	2023-24	2024-25	2025-26	2026-27	2027-28	2028-29	2029-30	2030-31	2031-32
9	244	197	199	194	218	184	187	161	157	155
10	215	237	191	194	188	212	179	182	157	153
11	206	203	224	181	183	178	201	170	172	148
12	213	213	209	231	187	189	183	207	175	177
Grand Total	878	850	823	800	776	763	750	720	661	633

Source: Cooperative Strategies

Projected Enrollment - High - Goochland High

Grade	2022-23	2023-24	2024-25	2025-26	2026-27	2027-28	2028-29	2029-30	2030-31	2031-32
9	254	211	218	220	257	227	240	221	230	272
10	220	252	210	217	218	256	225	239	220	228
11	212	213	245	204	211	212	248	219	232	213
12	219	224	226	259	216	223	224	263	232	245
Grand Total	905	900	899	900	902	918	937	942	914	958

Source: Cooperative Strategies

The varying shades of color in the table represent statistically significant cohort sizes. The darker blue represents smaller cohorts, while the darker red represents larger cohorts, comparatively.

GOOCHLAND MIDDLE

Students attending Goochland Middle feed from Byrd Elementary, Randolph Elementary, and Goochland Elementary and feed into Goochland High.

Historical Enrollment - Goochland Middle

Grade	2012-13	2013-14	2014-15	2015-16	2016-17	2017-18	2018-19	2019-20	2020-21	2021-22
6	207	192	195	179	203	206	203	221	181	187
7	180	203	200	195	182	207	216	202	235	189
8	196	180	202	201	207	193	212	217	197	233
Grand Total	583	575	597	575	592	606	631	640	613	609

Source: Goochland County Public Schools

Projected Enrollment - Recommended - Goochland Middle

Grade	2022-23	2023-24	2024-25	2025-26	2026-27	2027-28	2028-29	2029-30	2030-31	2031-32
6	183	211	183	189	167	168	176	181	207	180
7	195	191	220	191	197	174	175	183	189	216
8	189	195	191	220	192	198	175	175	184	190
Grand Total	567	597	594	600	556	540	526	539	580	586

Source: Cooperative Strategies

Projected Enrollment - Moderate - Goochland Middle

Grade	2022-23	2023-24	2024-25	2025-26	2026-27	2027-28	2028-29	2029-30	2030-31	2031-32
6	185	212	183	190	170	171	185	191	218	190
7	193	191	220	190	197	175	177	192	197	226
8	191	196	193	222	192	199	177	179	194	199
Grand Total	569	599	596	602	559	545	539	562	609	615

Source: Cooperative Strategies

Projected Enrollment - Low - Goochland Middle

Grade	2022-23	2023-24	2024-25	2025-26	2026-27	2027-28	2028-29	2029-30	2030-31	2031-32
6	182	205	173	176	152	148	146	150	171	148
7	191	186	210	177	179	155	151	149	153	175
8	188	190	185	209	176	179	154	151	148	152
Grand Total	561	581	568	562	507	482	451	450	472	475

Source: Cooperative Strategies

Projected Enrollment - High - Goochland Middle

Grade	2022-23	2023-24	2024-25	2025-26	2026-27	2027-28	2028-29	2029-30	2030-31	2031-32
6	188	220	194	206	189	197	233	240	276	241
7	196	197	230	203	215	198	206	244	252	288
8	194	201	202	236	208	221	203	211	250	258
Grand Total	578	618	626	645	612	616	642	695	778	787

Source: Cooperative Strategies

The varying shades of color in the table represent statistically significant cohort sizes. The darker blue represents smaller cohorts, while the darker red represents larger cohorts, comparatively.

RANDOLPH ELEMENTARY

Students attending Goochland Elementary feed into Goochland Middle.

Historical Enrollment - Randolph Elementary

Grade	2012-13	2013-14	2014-15	2015-16	2016-17	2017-18	2018-19	2019-20	2020-21	2021-22
PK	0	0	0	0	18	18	16	19	20	21
K	58	84	59	85	59	73	76	66	70	61
1	52	66	89	73	80	65	77	76	72	71
2	73	63	69	92	78	79	68	76	75	79
3	67	78	67	76	91	83	77	71	78	77
4	75	70	80	75	79	88	88	83	73	84
5	69	77	68	89	75	81	85	88	85	68
Grand Total	394	438	432	490	480	487	487	479	473	461

Source: Goochland County Public Schools

Projected Enrollment - Recommended - Randolph Elementary

Grade	2022-23	2023-24	2024-25	2025-26	2026-27	2027-28	2028-29	2029-30	2030-31	2031-32
PK	21	21	21	21	21	21	21	21	21	21
K	67	68	75	56	66	66	66	66	66	66
1	64	71	72	78	58	69	69	69	69	69
2	71	64	70	72	78	58	69	69	69	69
3	81	73	65	72	73	80	60	71	71	71
4	81	86	77	69	76	77	85	63	75	75
5	85	82	86	77	70	77	78	85	64	76
Grand Total	470	465	466	445	442	448	448	444	435	447

Source: Cooperative Strategies

Projected Enrollment - Moderate - Randolph Elementary

Grade	2022-23	2023-24	2024-25	2025-26	2026-27	2027-28	2028-29	2029-30	2030-31	2031-32
PK	21	21	21	21	21	21	21	21	21	21
K	69	70	77	57	68	68	68	68	68	68
1	64	73	74	81	60	72	72	72	72	72
2	72	66	74	76	83	62	73	73	73	73
3	81	74	67	76	78	85	63	75	75	75
4	80	85	78	70	80	81	88	66	78	78
5	83	79	84	77	69	79	80	87	65	78
Grand Total	470	468	475	458	459	468	465	462	452	465

Source: Cooperative Strategies

The varying shades of color in the table represent statistically significant cohort sizes. The darker blue represents smaller cohorts, while the darker red represents larger cohorts, comparatively.

Projected Enrollment - Low - Randolph Elementary

Grade	2022-23	2023-24	2024-25	2025-26	2026-27	2027-28	2028-29	2029-30	2030-31	2031-32
PK	21	21	21	21	21	21	21	21	21	21
K	65	66	72	54	64	64	64	64	64	64
1	63	67	68	74	55	66	66	66	66	66
2	71	63	67	68	74	55	66	66	66	66
3	80	72	64	68	69	75	56	67	67	67
4	79	82	73	65	69	70	77	57	68	68
5	82	76	79	71	63	67	68	74	56	66
Grand Total	461	447	444	421	415	418	418	415	408	418

Source: Cooperative Strategies

Projected Enrollment - High - Randolph Elementary

Grade	2022-23	2023-24	2024-25	2025-26	2026-27	2027-28	2028-29	2029-30	2030-31	2031-32
PK	21	21	21	21	21	21	21	21	21	21
K	74	75	82	61	73	73	73	73	73	73
1	65	79	80	88	65	78	78	78	78	78
2	74	68	83	84	92	68	81	81	81	81
3	82	77	71	86	87	95	71	85	85	85
4	82	88	82	76	91	93	101	76	90	90
5	85	82	88	83	76	92	94	102	76	91
Grand Total	483	490	507	499	505	520	519	516	504	519

Source: Cooperative Strategies

The varying shades of color in the table represent statistically significant cohort sizes. The darker blue represents smaller cohorts, while the darker red represents larger cohorts, comparatively.

CONCLUSION

As with any projection, the Division should pay close attention to live birth counts, enrollment in elementary schools, open enrollment, non-public enrollment, in / out migration patterns, and any housing growth. It is recommended that this document be reviewed on an annual basis to determine how more recent growth and enrollment trends will impact the enrollment projections.

Cooperative Strategies is pleased to have had the opportunity to provide the Division with this demographic study. We hope this document will provide the necessary information to make informed decisions about the future of the Goochland County Public Schools.

APPENDIX

The table below illustrates a live/attend analysis for the Goochland County Public Schools. This table cross-references 2021-22 K—12 student enrollment* and the attendance zone in which students reside. The numbers in bold denote students who live in the boundary of and attend their zoned school. Transfer-in denotes the number of students who transfer into a school from outside of the attendance zone. Transfer-out denotes the number of students that leave their zoned school to attend another school. Out of Division / Unmatched indicates students who reside outside of the Division or were unable to be geocoded (matched to a point on a map).

Goochland County Public Schools 2021-22 Live/Attend Analysis K - 12 Students		Attend School							Grand Total	Transfer-out	Transfer-out %
		Byrd Elementary	Goochland Elementary	Randolph Elementary	Goochland Middle	Goochland High	Enrollment School				
Live Boundary	Byrd Elementary Boundary	252	25	2			4	283	31	11%	
	Goochland Elementary Boundary	6	281	8			2	297	16	5%	
	Randolph Elementary Boundary	4	8	423			2	437	14	3%	
	Goochland Middle Boundary				606		2	608	2	0%	
	Goochland High Boundary					860	9	869	9	1%	
	Out of Division / Unmatched	4	9	5	4	8		30	-	-	
	Grand Total	266	323	438	610	868	19	Total Students: 2,524			
	Live & Attend	252	281	423	606	860	-				
	Transfer-in	14	42	15	4	8	-				
	Transfer-in %	5%	13%	3%	1%	1%	-				

Source: Goochland County Public Schools

*Student data and official enrollment are taken at different points in the year, so student data counts do not necessarily match official enrollment counts.

The map below shows student density in the Goochland County Public Schools. The darker blue areas indicate lower student density while the darker red areas indicate higher student density.

Goochland County Public Schools Student Density (2021-22)

